

Data Path : Z:\voasrv\HPCHEM1\MSVOA_U\Data\VU040221\
 Data File : VU042917.D
 Acq On : 02 Apr 2021 23:39
 Operator : SY/MD
 Sample : M1927-01
 Misc : 5.0mL/MSVOA_U/WATER
 ALS Vial : 23 Sample Multiplier: 1

Instrument :
 MSVOA_U
 ClientSampled :
 TW-6

Quant Time: Apr 03 00:19:33 2021
 Quant Method : Z:\voasrv\HPCHEM1\MSVOA_U\Method\82U032421W.M
 Quant Title : SW846 8260
 QLast Update : Thu Mar 25 05:42:00 2021
 Response via : Initial Calibration

Compound	R.T.	QIon	Response	Conc	Units	Dev(Min)

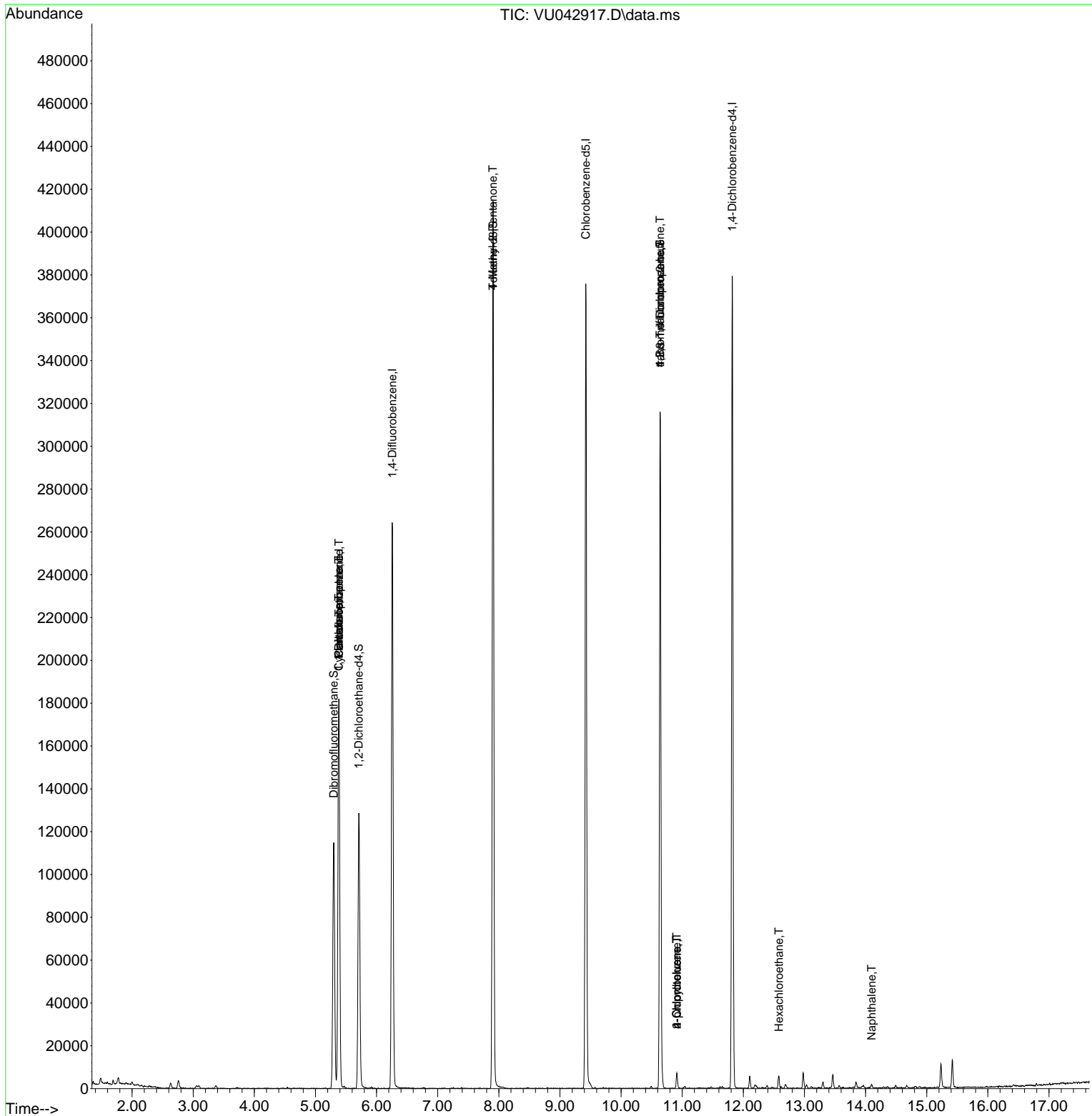
Internal Standards						
1) Pentafluorobenzene	5.385	168	126107	50.00	ug/l	0.00
34) 1,4-Difluorobenzene	6.256	114	202650	50.00	ug/l	0.00
63) Chlorobenzene-d5	9.423	117	192517	50.00	ug/l	0.00
72) 1,4-Dichlorobenzene-d4	11.819	152	95651	50.00	ug/l	0.00
System Monitoring Compounds						
33) 1,2-Dichloroethane-d4	5.710	65	100468	49.98	ug/l	0.00
Spiked Amount	50.000		Recovery	=	99.96%	
35) Dibromofluoromethane	5.298	113	69701	46.09	ug/l	0.00
Spiked Amount	50.000		Recovery	=	92.18%	
50) Toluene-d8	7.906	98	254155	47.77	ug/l	0.00
Spiked Amount	50.000		Recovery	=	95.54%	
62) 4-Bromofluorobenzene	10.639	95	94429	45.67	ug/l	0.00
Spiked Amount	50.000		Recovery	=	91.34%	
Target Compounds						
						Qvalue
6) Chloroethane	1.912	64	70	Below Cal	#	43
16) Acetone	2.629	43	2980	Below Cal		96
31) Cyclohexane	5.378	56	3227	1.29	ug/l #	4
36) 1,1-Dichloropropene	5.378	75	10120	5.05	ug/l #	51
38) Carbon Tetrachloride	5.385	117	12538	5.48	ug/l #	16
51) 4-Methyl-2-Pentanone	7.902	43	1215	0.37	ug/l #	1
76) 1,2,3-Trichloropropane	10.639	75	54106	22.24	ug/l #	37
78) n-propylbenzene	10.912	91	6219	0.87	ug/l	97
79) 2-Chlorotoluene	10.912	91	6219	1.45	ug/l #	41
81) trans-1,4-Dichloro-2-b...	10.639	75	54106	65.90	ug/l #	6
82) 4-Chlorotoluene	10.912	91	6219	1.21	ug/l #	46
90) Hexachloroethane	12.581	117	415	0.40	ug/l #	6
95) Naphthalene	14.098	128	2007	2.87	ug/l #	86

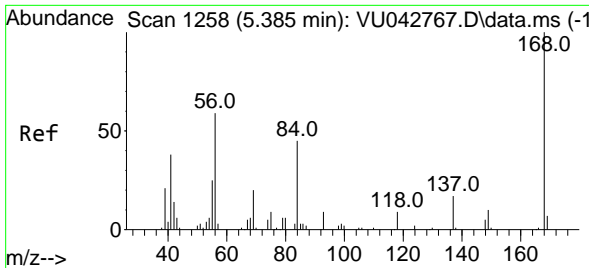
(#) = qualifier out of range (m) = manual integration (+) = signals summed

Data Path : Z:\voasrv\HPCHEM1\MSVOA_U\Data\VU040221\
 Data File : VU042917.D
 Acq On : 02 Apr 2021 23:39
 Operator : SY/MD
 Sample : M1927-01
 Misc : 5.0mL/MSVOA_U/WATER
 ALS Vial : 23 Sample Multiplier: 1

Instrument :
 MSVOA_U
 ClientSampleID :
 TW-6

Quant Time: Apr 03 00:19:33 2021
 Quant Method : Z:\voasrv\HPCHEM1\MSVOA_U\Method\82U032421W.M
 Quant Title : SW846 8260
 QLast Update : Thu Mar 25 05:42:00 2021
 Response via : Initial Calibration

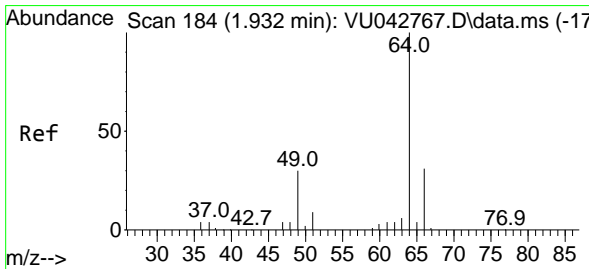
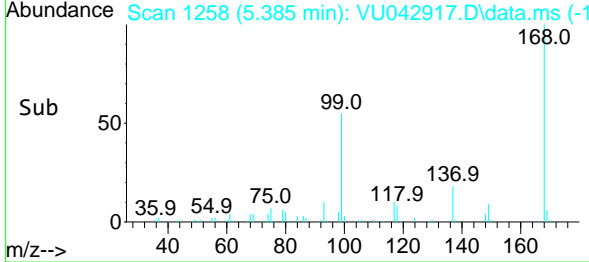
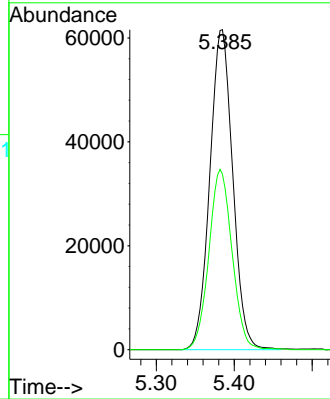
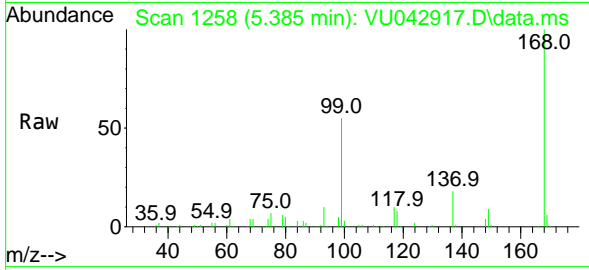




#1
 Pentafluorobenzene
 Concen: 50.00 ug/l
 RT: 5.385 min Scan# 1258
 Delta R.T. -0.000 min
 Lab File: VU042917.D
 Acq: 02 Apr 2021 23:39

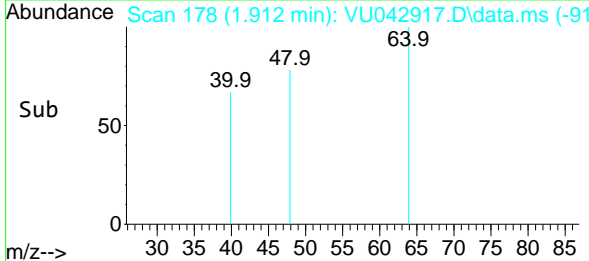
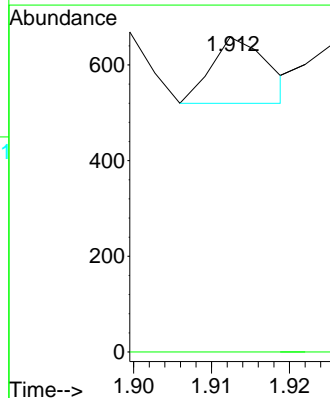
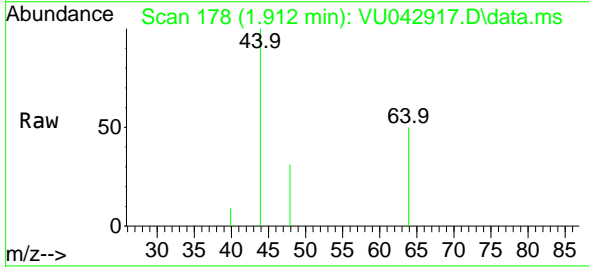
Instrument :
 MSVOA_U
 ClientSampled :
 TW-6

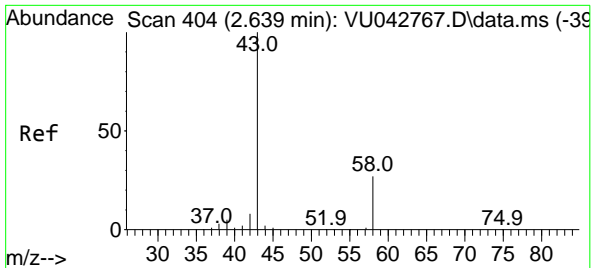
Tgt Ion:168 Resp: 126107
 Ion Ratio Lower Upper
 168 100
 99 54.9 46.4 69.6



#6
 Chloroethane
 Concen: Below Cal
 RT: 1.912 min Scan# 178
 Delta R.T. -0.020 min
 Lab File: VU042917.D
 Acq: 02 Apr 2021 23:39

Tgt Ion: 64 Resp: 70
 Ion Ratio Lower Upper
 64 100
 66 0.0 25.0 37.6#

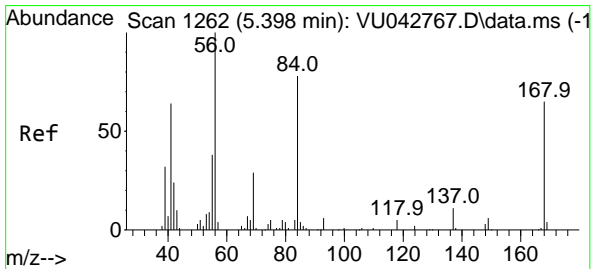
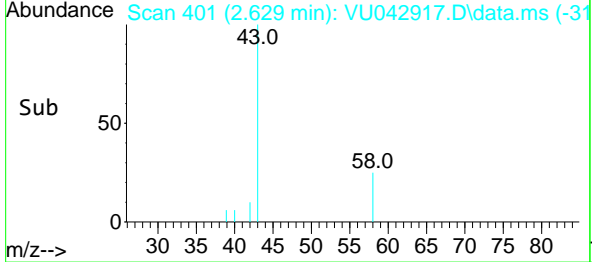
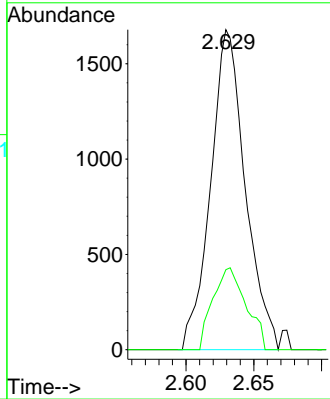
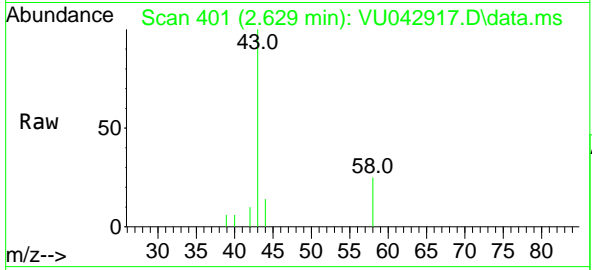




#16
 Acetone
 Concen: Below Cal
 RT: 2.629 min Scan# 401
 Delta R.T. -0.010 min
 Lab File: VU042917.D
 Acq: 02 Apr 2021 23:39

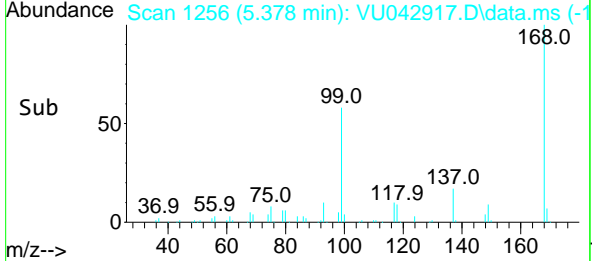
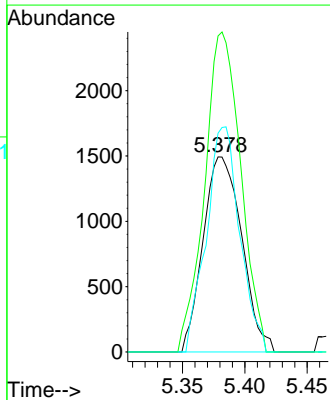
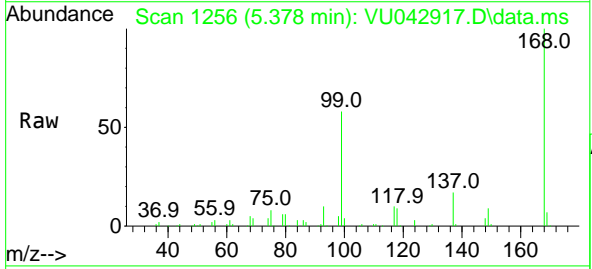
Instrument :
 MSVOA_U
 ClientSampled :
 TW-6

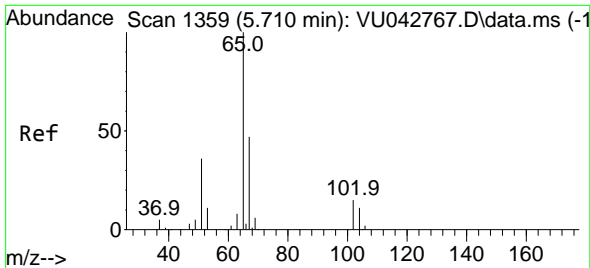
Tgt Ion	Resp	Lower	Upper
43	100		
58	25.0	21.6	32.4



#31
 Cyclohexane
 Concen: 1.29 ug/l
 RT: 5.378 min Scan# 1256
 Delta R.T. -0.019 min
 Lab File: VU042917.D
 Acq: 02 Apr 2021 23:39

Tgt Ion	Resp	Lower	Upper
56	100		
69	162.0	23.3	34.9#
84	112.1	62.2	93.4#

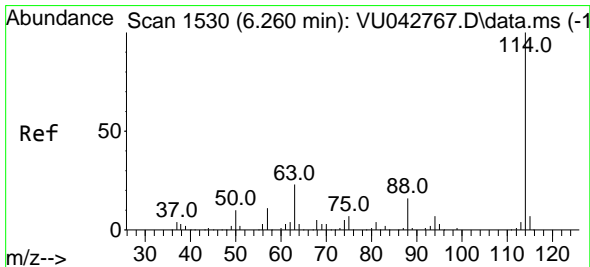
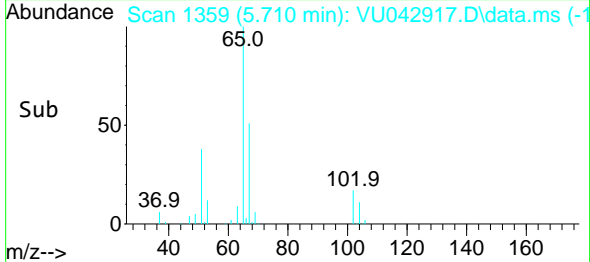
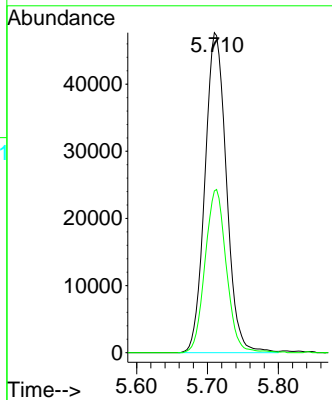
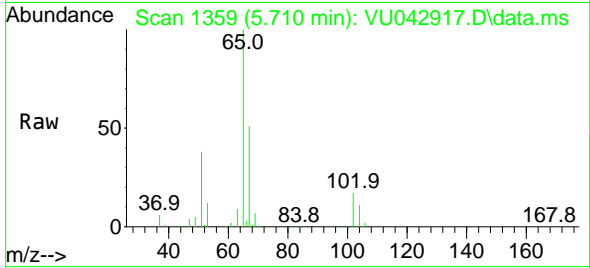




#33
 1,2-Dichloroethane-d4
 Concen: 49.98 ug/l
 RT: 5.710 min Scan# 1359
 Delta R.T. -0.000 min
 Lab File: VU042917.D
 Acq: 02 Apr 2021 23:39

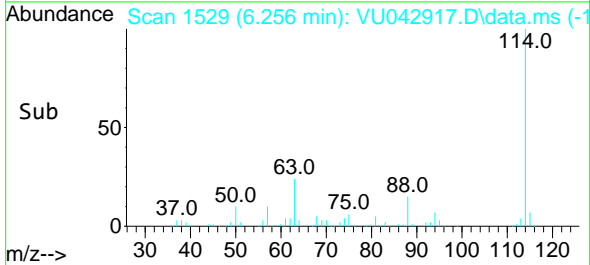
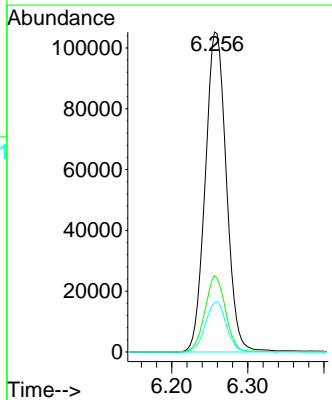
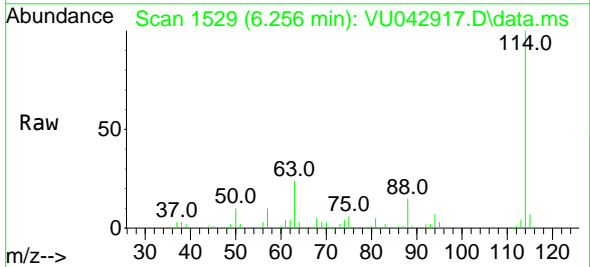
Instrument : MSVOA_U
 ClientSampled : TW-6

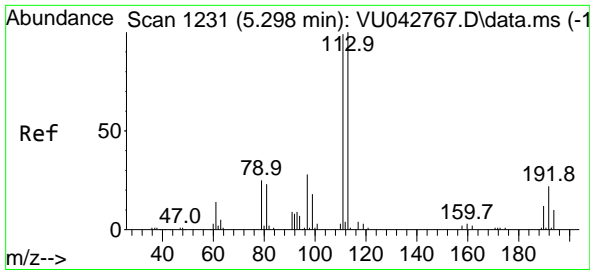
Tgt Ion: 65 Resp: 100468
 Ion Ratio Lower Upper
 65 100
 67 50.2 0.0 98.8



#34
 1,4-Difluorobenzene
 Concen: 50.00 ug/l
 RT: 6.256 min Scan# 1529
 Delta R.T. -0.004 min
 Lab File: VU042917.D
 Acq: 02 Apr 2021 23:39

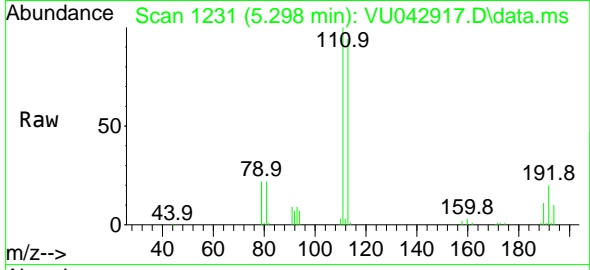
Tgt Ion:114 Resp: 202650
 Ion Ratio Lower Upper
 114 100
 63 23.8 0.0 46.8
 88 15.4 0.0 32.2



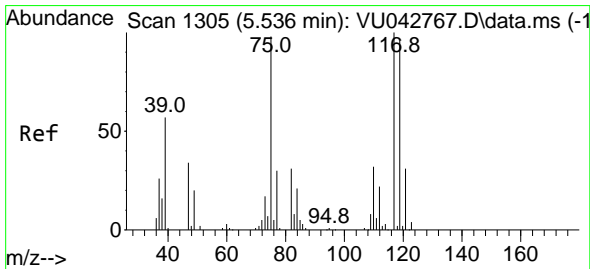
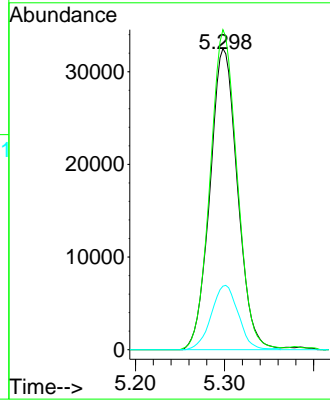
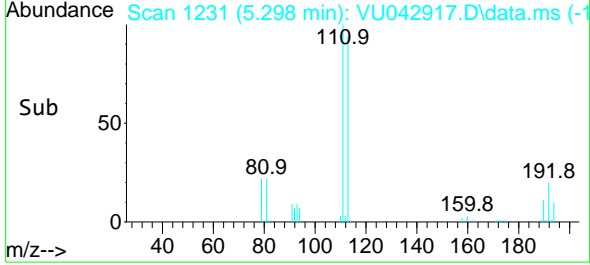


#35
 Dibromofluoromethane
 Concen: 46.09 ug/l
 RT: 5.298 min Scan# 1231
 Delta R.T. -0.000 min
 Lab File: VU042917.D
 Acq: 02 Apr 2021 23:39

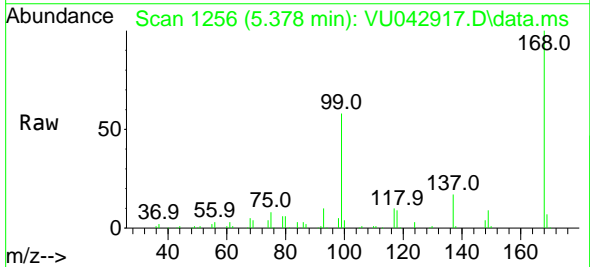
Instrument :
 MSVOA_U
 ClientSampled :
 TW-6



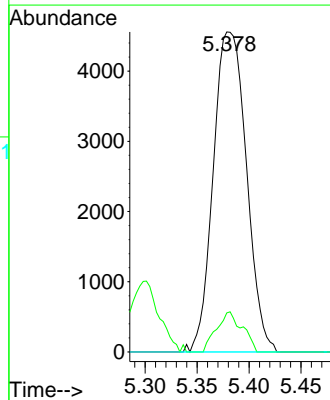
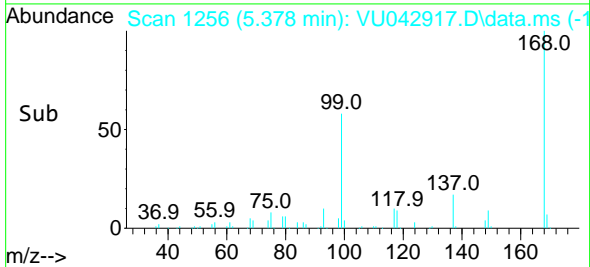
Tgt Ion:113 Resp: 69701
 Ion Ratio Lower Upper
 113 100
 111 104.7 82.1 123.1
 192 20.9 17.6 26.4

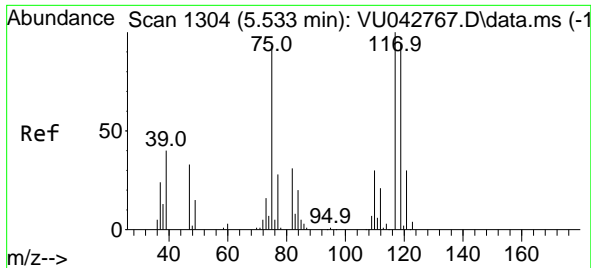


#36
 1,1-Dichloropropene
 Concen: 5.05 ug/l
 RT: 5.378 min Scan# 1256
 Delta R.T. -0.158 min
 Lab File: VU042917.D
 Acq: 02 Apr 2021 23:39



Tgt Ion: 75 Resp: 10120
 Ion Ratio Lower Upper
 75 100
 110 9.7 16.6 49.7#
 77 0.0 24.7 37.1#

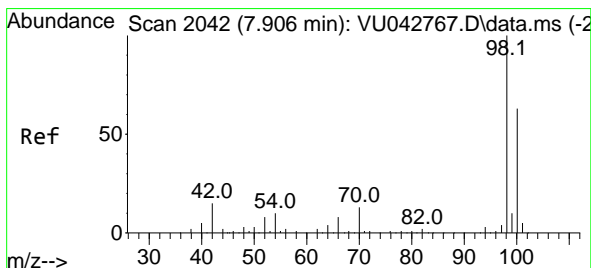
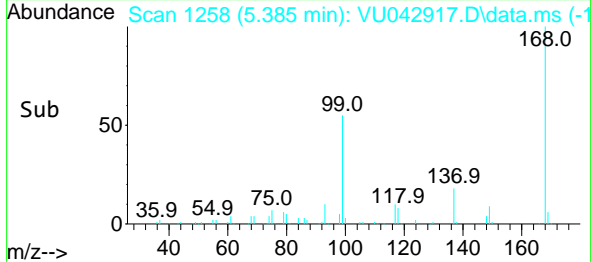
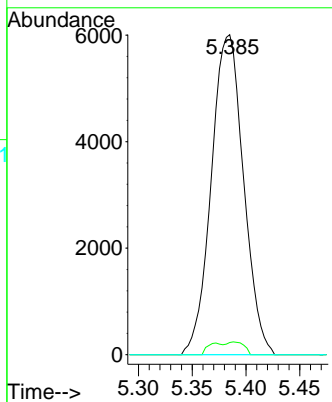
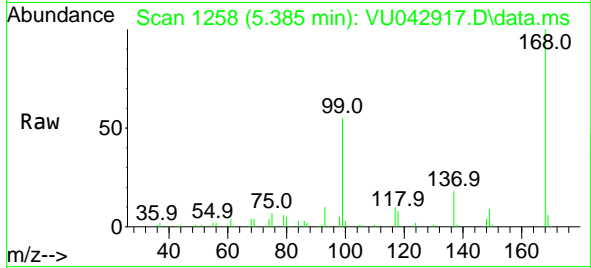




#38
 Carbon Tetrachloride
 Concen: 5.48 ug/l
 RT: 5.385 min Scan# 1258
 Delta R.T. -0.148 min
 Lab File: VU042917.D
 Acq: 02 Apr 2021 23:39

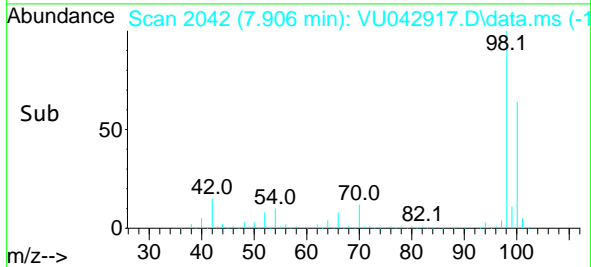
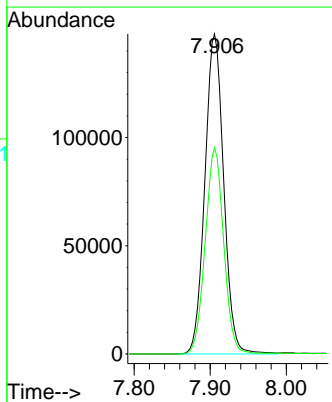
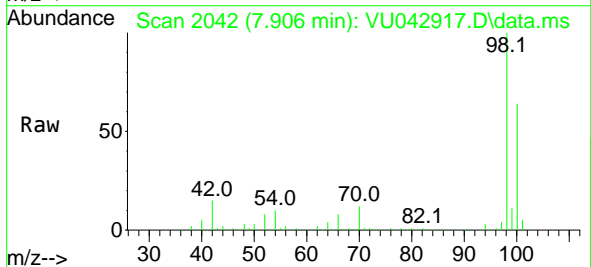
Instrument :
 MSVOA_U
 ClientSampled :
 TW-6

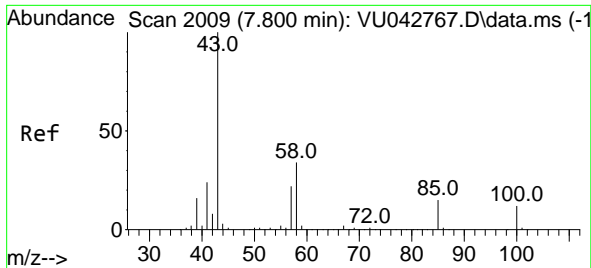
Tgt Ion:117 Resp: 12538
 Ion Ratio Lower Upper
 117 100
 119 3.8 75.2 112.8#
 121 0.0 24.2 36.4#



#50
 Toluene-d8
 Concen: 47.77 ug/l
 RT: 7.906 min Scan# 2042
 Delta R.T. -0.000 min
 Lab File: VU042917.D
 Acq: 02 Apr 2021 23:39

Tgt Ion: 98 Resp: 254155
 Ion Ratio Lower Upper
 98 100
 100 63.1 50.4 75.6

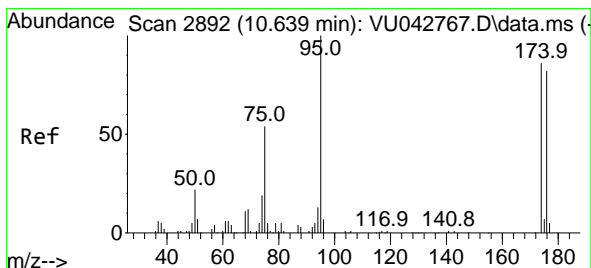
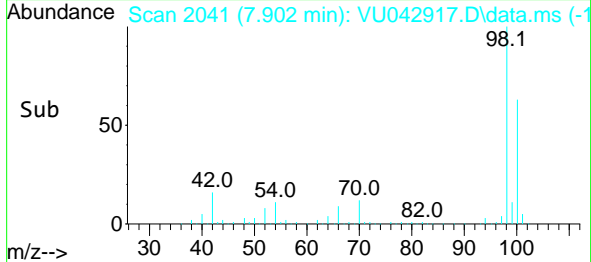
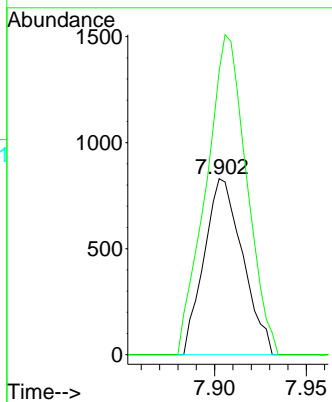
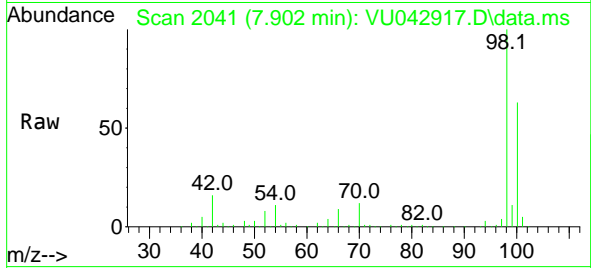




#51
 4-Methyl-2-Pentanone
 Concen: 0.37 ug/l
 RT: 7.902 min Scan# 2041
 Delta R.T. 0.103 min
 Lab File: VU042917.D
 Acq: 02 Apr 2021 23:39

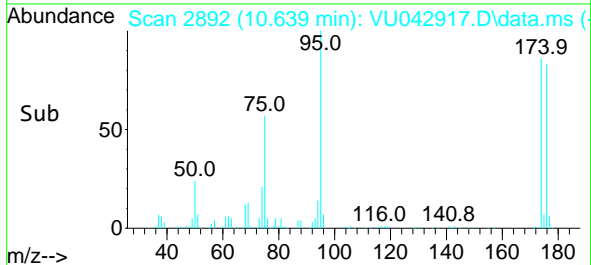
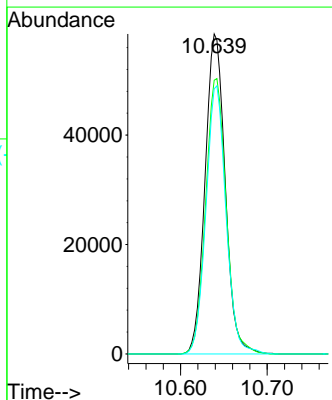
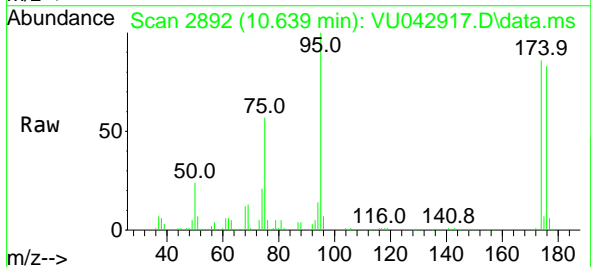
Instrument :
 MSVOA_U
 ClientSampled :
 TW-6

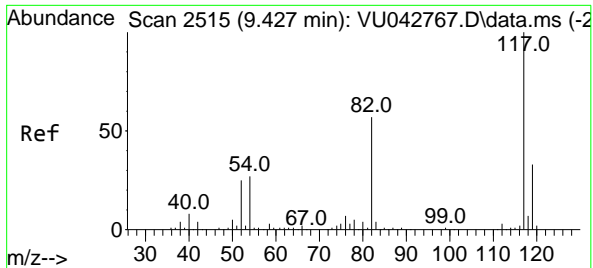
Tgt Ion: 43 Resp: 1215
 Ion Ratio Lower Upper
 43 100
 58 190.8 27.4 41.2#



#62
 4-Bromofluorobenzene
 Concen: 45.67 ug/l
 RT: 10.639 min Scan# 2892
 Delta R.T. -0.000 min
 Lab File: VU042917.D
 Acq: 02 Apr 2021 23:39

Tgt Ion: 95 Resp: 94429
 Ion Ratio Lower Upper
 95 100
 174 88.0 0.0 175.2
 176 83.4 0.0 167.4

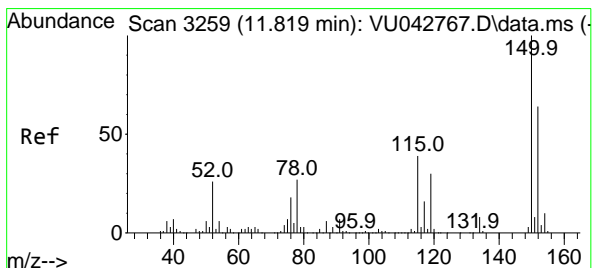
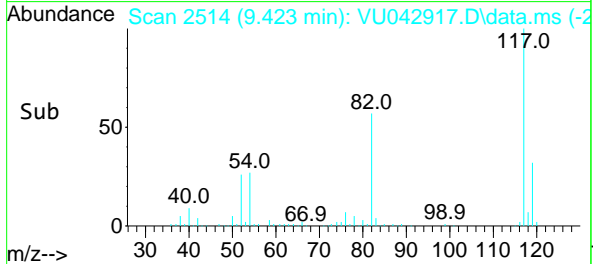
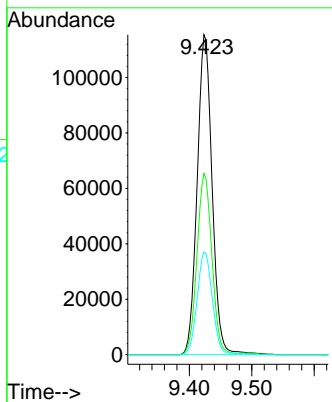
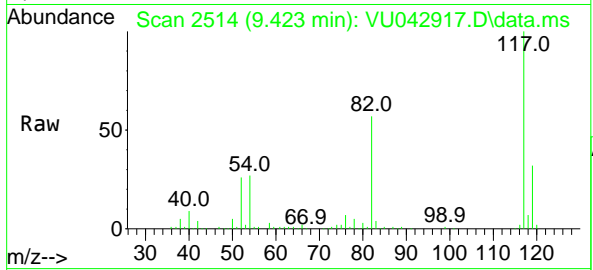




#63
 Chlorobenzene-d5
 Concen: 50.00 ug/l
 RT: 9.423 min Scan# 2514
 Delta R.T. -0.003 min
 Lab File: VU042917.D
 Acq: 02 Apr 2021 23:39

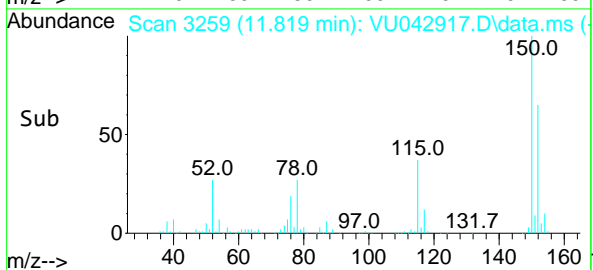
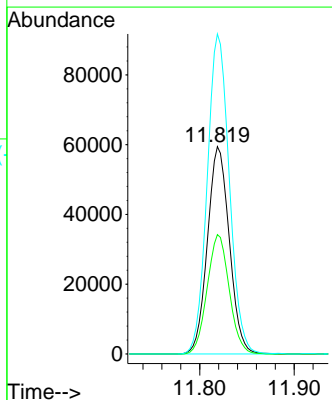
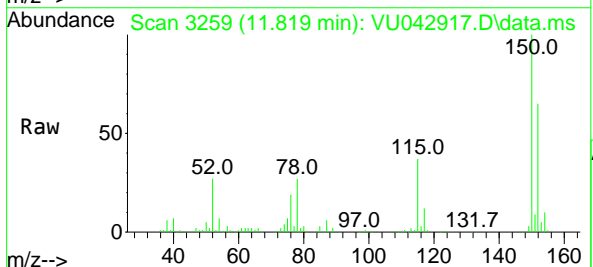
Instrument :
 MSVOA_U
ClientSampled :
 TW-6

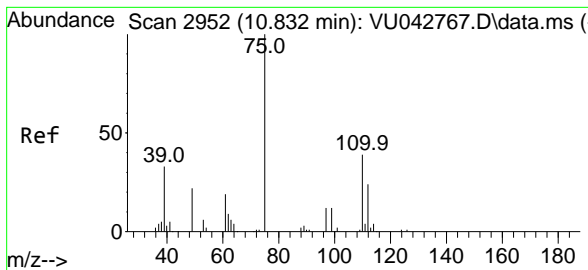
Tgt Ion	Resp	Lower	Upper
117	192517		
117	100		
82	56.6	45.5	68.3
119	32.1	26.2	39.4



#72
 1,4-Dichlorobenzene-d4
 Concen: 50.00 ug/l
 RT: 11.819 min Scan# 3259
 Delta R.T. -0.000 min
 Lab File: VU042917.D
 Acq: 02 Apr 2021 23:39

Tgt Ion	Resp	Lower	Upper
152	95651		
152	100		
115	57.8	41.0	123.0
150	155.5	0.0	341.0

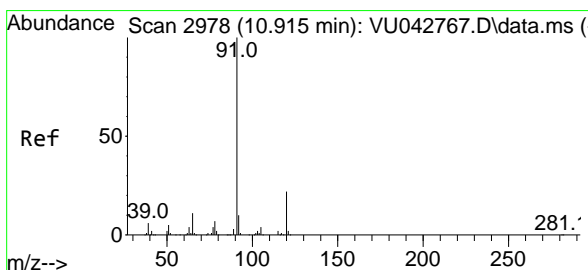
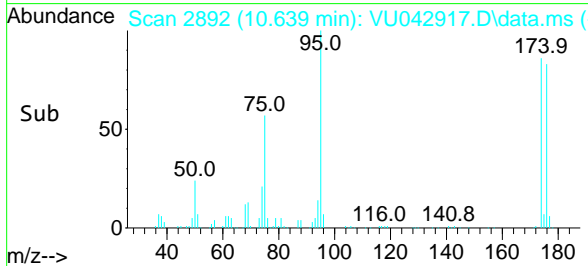
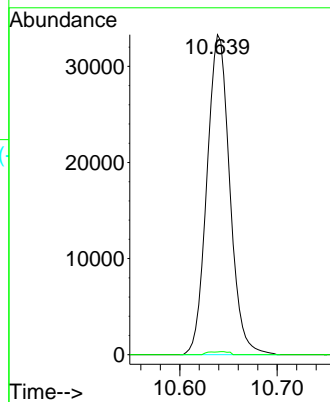
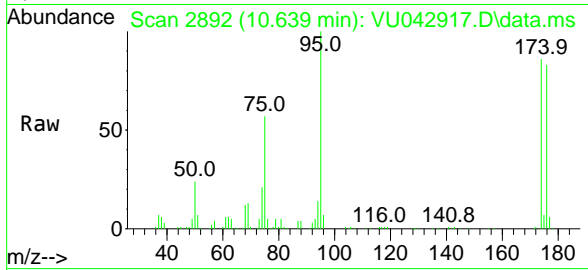




#76
 1,2,3-Trichloropropane
 Concen: 22.24 ug/l
 RT: 10.639 min Scan# 2892
 Delta R.T. -0.193 min
 Lab File: VU042917.D
 Acq: 02 Apr 2021 23:39

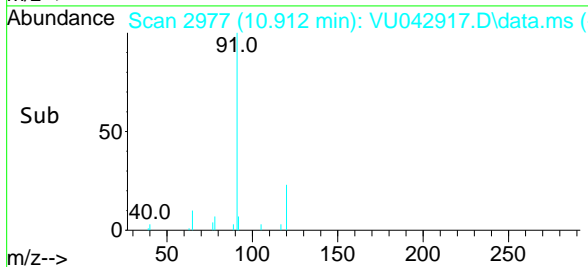
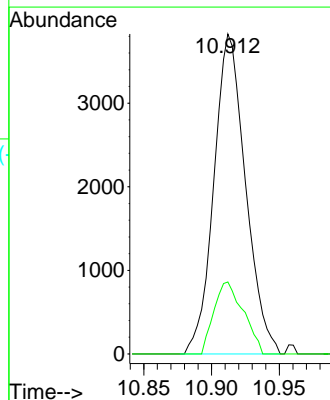
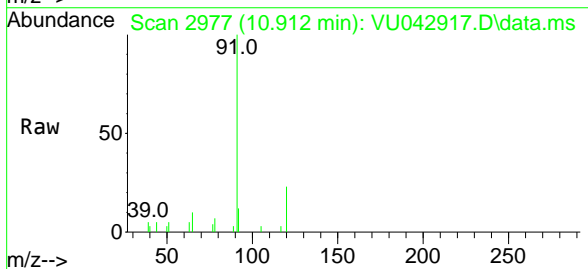
Instrument :
 MSVOA_U
 ClientSampled :
 TW-6

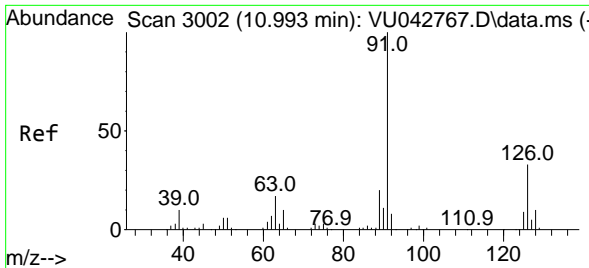
Tgt Ion: 75 Resp: 54106
 Ion Ratio Lower Upper
 75 100
 77 0.9 19.6 58.8#



#78
 n-propylbenzene
 Concen: 0.87 ug/l
 RT: 10.912 min Scan# 2977
 Delta R.T. -0.003 min
 Lab File: VU042917.D
 Acq: 02 Apr 2021 23:39

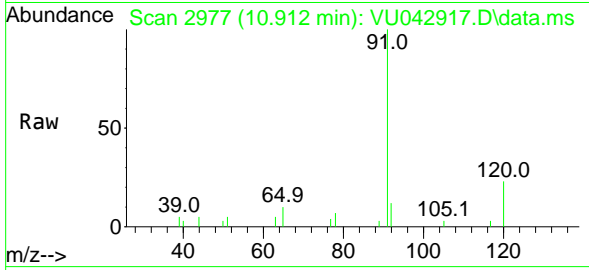
Tgt Ion: 91 Resp: 6219
 Ion Ratio Lower Upper
 91 100
 120 20.9 11.1 33.1



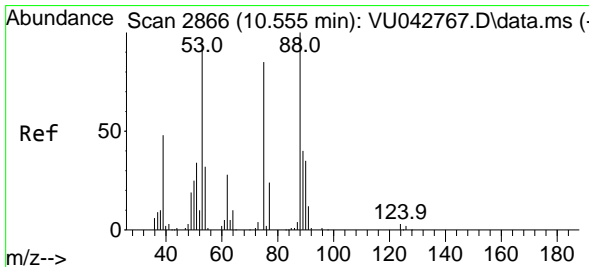
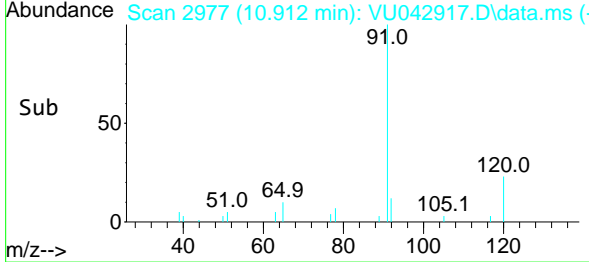
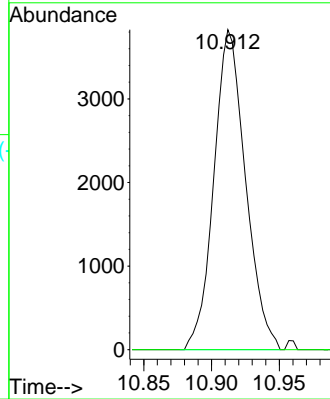


#79
 2-Chlorotoluene
 Concen: 1.45 ug/l
 RT: 10.912 min Scan# 2977
 Delta R.T. -0.081 min
 Lab File: VU042917.D
 Acq: 02 Apr 2021 23:39

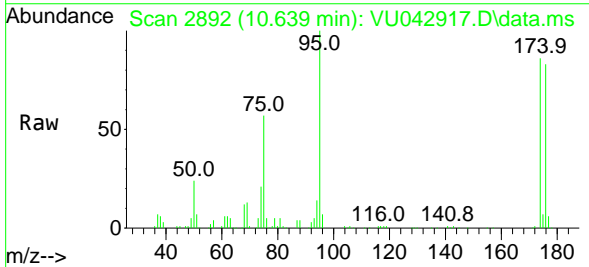
Instrument :
 MSVOA_U
 ClientSampled :
 TW-6



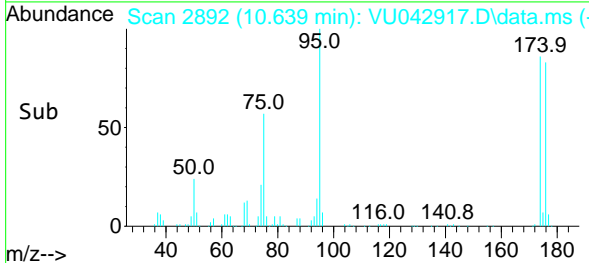
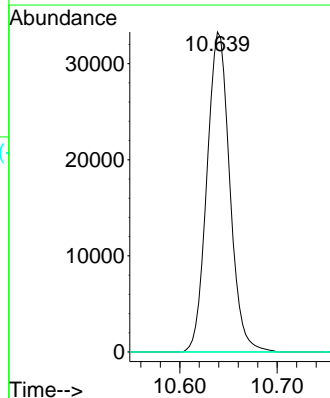
Tgt Ion: 91 Resp: 6219
 Ion Ratio Lower Upper
 91 100
 126 0.0 16.7 50.1#

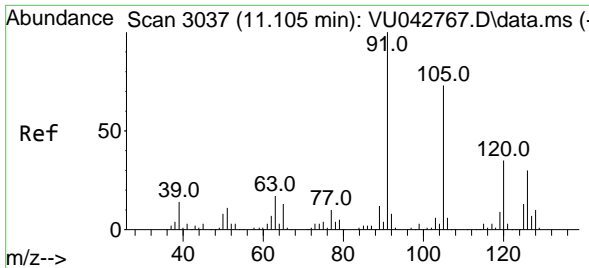


#81
 trans-1,4-Dichloro-2-butene
 Concen: 65.90 ug/l
 RT: 10.639 min Scan# 2892
 Delta R.T. 0.083 min
 Lab File: VU042917.D
 Acq: 02 Apr 2021 23:39



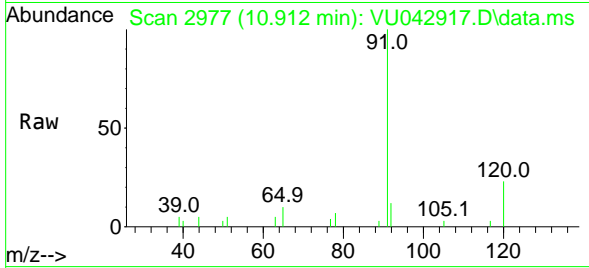
Tgt Ion: 75 Resp: 54106
 Ion Ratio Lower Upper
 75 100
 53 0.0 88.3 132.5#
 89 0.0 35.7 53.5#



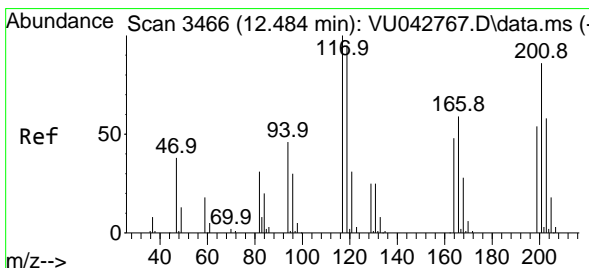
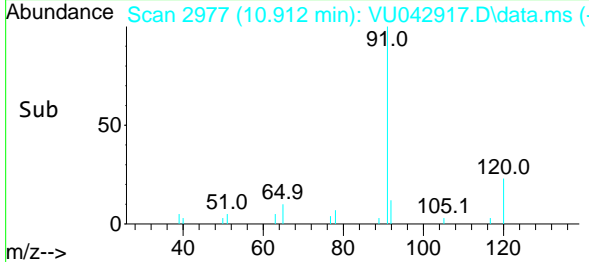
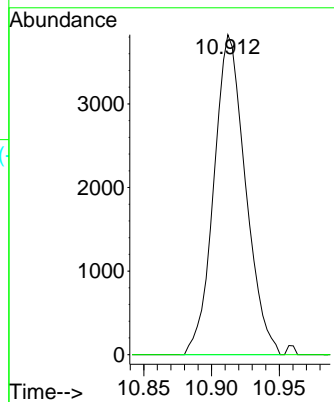


#82
 4-Chlorotoluene
 Concen: 1.21 ug/l
 RT: 10.912 min Scan# 2977
 Delta R.T. -0.193 min
 Lab File: VU042917.D
 Acq: 02 Apr 2021 23:39

Instrument :
 MSVOA_U
 ClientSampled :
 TW-6

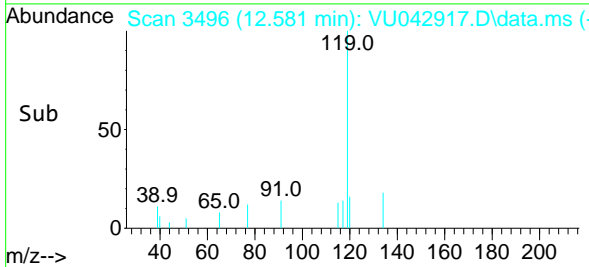
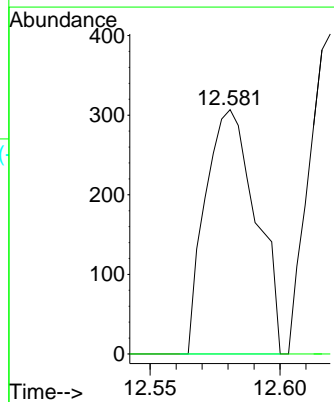
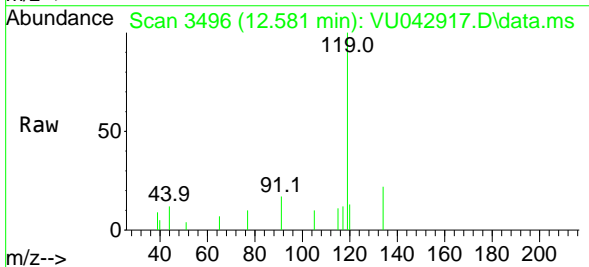


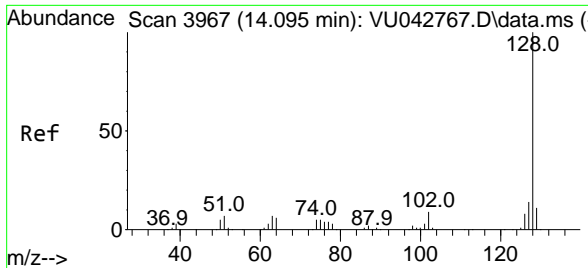
Tgt Ion: 91 Resp: 6219
 Ion Ratio Lower Upper
 91 100
 126 0.0 14.5 43.5#



#90
 Hexachloroethane
 Concen: 0.40 ug/l
 RT: 12.581 min Scan# 3496
 Delta R.T. 0.096 min
 Lab File: VU042917.D
 Acq: 02 Apr 2021 23:39

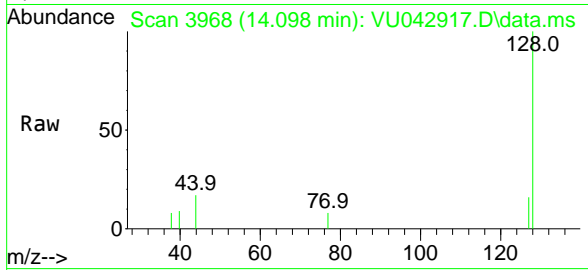
Tgt Ion: 117 Resp: 415
 Ion Ratio Lower Upper
 117 100
 201 0.0 43.5 130.7#





#95
 Naphthalene
 Concen: 2.87 ug/l
 RT: 14.098 min Scan# 3968
 Delta R.T. 0.003 min
 Lab File: VU042917.D
 Acq: 02 Apr 2021 23:39

Instrument :
 MSVOA_U
 ClientSampled :
 TW-6



Tgt Ion:128 Resp: 2007

Ion	Ratio	Lower	Upper
128	100		
127	9.6	10.9	16.3#
129	3.8	8.7	13.1#

