

Data Path : Z:\VOASRV\HPCHEM1\MSVOA U\DATA\VU040320\
 Data File : VU037577.D
 Acq On : 03 Apr 2020 19:25
 Operator : JC/MD
 Sample : L2158-06 50X
 Misc : 5.0mL/MSVOA U/WATER
 ALS Vial : 1 Sample Multiplier: 1

Instrument :
 MSVOA_U
 ClientSampleId :
 C0F03

Quant Time: Apr 04 06:40:32 2020
 Quant Method : Z:\VOASRV\HPCHEM1\MSVOA_U\METHOD\SOMULM040320WMA.M
 Quant Title : VOC Analysis
 QLast Update : Sat Apr 04 05:18:00 2020
 Response via : Initial Calibration

Internal Standards	R.T.	QIon	Response	Conc	Units	Dev(Min)
1) 1,4-Difluorobenzene	6.28	114	171939	50.00	ug/L	0.00
28) Chlorobenzene-d5	9.44	117	162527	50.00	ug/L	0.00
60) 1,4-Dichlorobenzene-d4	11.83	152	75096	50.00	ug/L	0.00

System Monitoring Compounds

4) Vinyl Chloride-d3	1.61	65	61546	44.07	ug/L	0.00
Spiked Amount	50.000	Range	60 - 135	Recovery	=	88.14%
7) Chloroethane-d5	1.93	69	49660	44.26	ug/L	0.00
Spiked Amount	50.000	Range	70 - 130	Recovery	=	88.52%
11) 1,1-Dichloroethene-d2	2.59	63	82885	35.31	ug/L	0.00
Spiked Amount	50.000	Range	60 - 125	Recovery	=	70.62%
21) 2-Butanone-d5	4.67	46	104214	99.30	ug/L	0.00
Spiked Amount	100.000	Range	40 - 130	Recovery	=	99.30%
24) Chloroform-d	5.11	84	103619	44.04	ug/L	0.00
Spiked Amount	50.000	Range	70 - 125	Recovery	=	88.08%
26) 1,2-Dichloroethane-d4	5.74	65	70598	45.20	ug/L	0.00
Spiked Amount	50.000	Range	70 - 125	Recovery	=	90.40%
32) Benzene-d6	5.76	84	218395	46.37	ug/L	0.00
Spiked Amount	50.000	Range	70 - 125	Recovery	=	92.74%
36) 1,2-Dichloropropane-d6	6.72	67	73967	46.66	ug/L	0.00
Spiked Amount	50.000	Range	70 - 120	Recovery	=	93.32%
41) Toluene-d8	7.92	98	197797	45.07	ug/L	0.00
Spiked Amount	50.000	Range	80 - 120	Recovery	=	90.14%
43) trans-1,3-Dichloropropene-	8.20	79	37533	43.61	ug/L	0.00
Spiked Amount	50.000	Range	60 - 125	Recovery	=	87.22%
47) 2-Hexanone-d5	8.65	63	79107	94.19	ug/L	0.00
Spiked Amount	100.000	Range	45 - 130	Recovery	=	94.19%
57) 1,1,2,2-Tetrachloroethane-	10.77	84	104699	46.20	ug/L	0.00
Spiked Amount	50.000	Range	65 - 120	Recovery	=	92.40%
64) 1,2-Dichlorobenzene-d4	12.21	152	72973	47.62	ug/L	0.00
Spiked Amount	50.000	Range	80 - 120	Recovery	=	95.24%

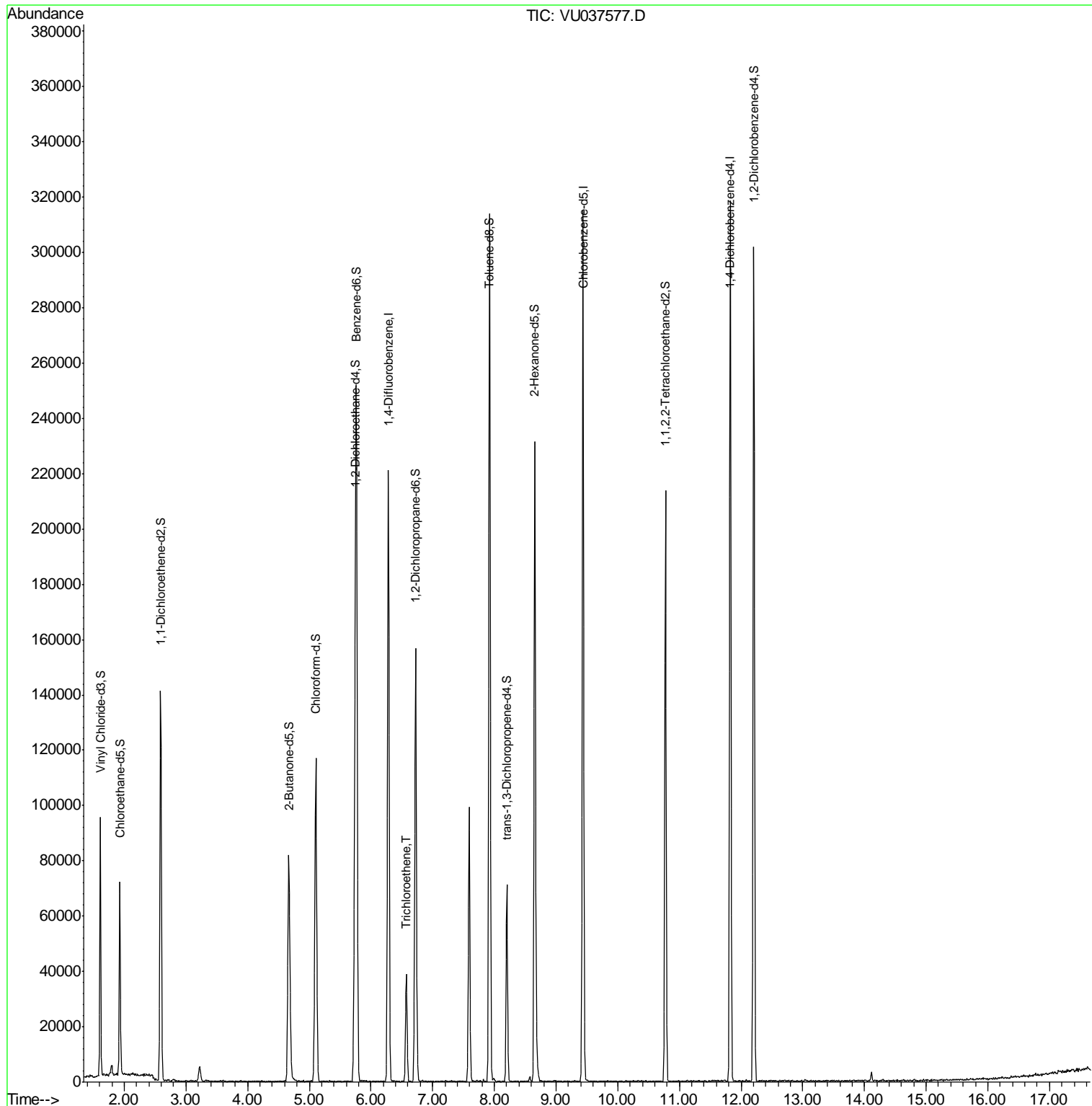
Target Compounds	R.T.	QIon	Response	Conc	Units	Ovalue
34) Trichloroethene	6.57	95	12968	11.646	ug/L	98

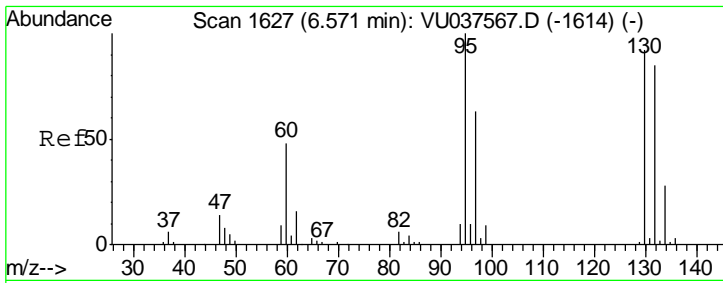
(#) = qualifier out of range (m) = manual integration (+) = signals summed

Data Path : Z:\VOASRV\HPCHEM1\MSVOA U\DATA\VU040320\
 Data File : VU037577.D
 Acq On : 03 Apr 2020 19:25
 Operator : JC/MD
 Sample : L2158-06 50X
 Misc : 5.0mL/MSVOA U/WATER
 ALS Vial : 1 Sample Multiplier: 1

Instrument :
 MSVOA_U
 ClientSampled :
 C0F03

Quant Time: Apr 04 06:40:32 2020
 Quant Method : Z:\VOASRV\HPCHEM1\MSVOA_U\METHOD\SOMULM040320WMA.M
 Quant Title : VOC Analysis
 QLast Update : Sat Apr 04 05:18:00 2020
 Response via : Initial Calibration





#34

Trichloroethene

Concen: 11.646 ug/L

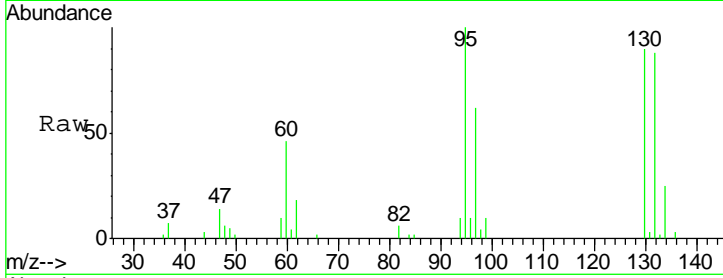
RT: 6.57 min Scan# 1628

Delta R.T. 0.00 min

Lab File: VU037577.D

Acq: 03 Apr 2020 19:25

Instrument :
MSVOA_U
ClientSampled :
C0F03



Tot Ion: 95 Resp: 12968

Ion Ratio Lower Upper

95 100

97 61.5 45.2 84.0

132 90.1 63.7 118.3

130 90.1 64.5 119.7

Abundance Ion 95.00 (94.70 to 95.70): VU0

Ion 97.00 (96.70 to 97.70): VU0

Ion 132.00 (131.70 to 132.70): V

Ion 130.00 (129.70 to 130.70): V

