

Data Path : Z:\VOASRV\HPCHEM1\MSVOA U\DATA\VU040419\
 Data File : VU030661.D
 Acq On : 04 Apr 2019 04:59
 Operator : JC/SP
 Sample : K2215-19
 Misc : 5.90µ/5mL/100uL/5.0mL/MSVOA_U/MEOH
 ALS Vial : 39 Sample Multiplier: 1

Instrument :
 MSVOA_U
ClientSampled :
 BF2P9

Manual Integrations
APPROVED
 MMDadoda
 4/4/2019 11:40:01 AM

Quant Time: Apr 04 08:39:23 2019
 Quant Method : Z:\VOASRV\HPCHEM1\MSVOA_U\METHOD\SOMULM032319WMA.M
 Quant Title : VOC Analysis
 QLast Update : Thu Apr 04 07:55:17 2019
 Response via : Initial Calibration

Internal Standards	R.T.	QIon	Response	Conc	Units	Dev(Min)
1) 1,4-Difluorobenzene	5.88	114	462910	50.00	µg/L	0.00
28) Chlorobenzene-d5	9.09	117	445052	50.00	µg/L	0.00
60) 1,4-Dichlorobenzene-d4	11.48	152	212959	50.00	µg/L	0.00

System Monitoring Compounds

4) Vinyl Chloride-d3	1.39	65	107763	28.93	µg/L	0.00
Spiked Amount	50.000	Range	60 - 135	Recovery	=	57.86%#
7) Chloroethane-d5	1.64	69	70601m	23.91	µg/L	-0.04
Spiked Amount	50.000	Range	70 - 130	Recovery	=	47.82%#
11) 1,1-Dichloroethene-d2	2.23	63	158548	22.44	µg/L	-0.04
Spiked Amount	50.000	Range	60 - 125	Recovery	=	44.88%#
21) 2-Butanone-d5	4.19	46	210516	60.11	µg/L	0.02
Spiked Amount	100.000	Range	40 - 130	Recovery	=	60.11%
24) Chloroform-d	4.64	84	189862	29.58	µg/L	0.00
Spiked Amount	50.000	Range	70 - 125	Recovery	=	59.16%#
26) 1,2-Dichloroethane-d4	5.30	65	127726	30.41	µg/L	0.00
Spiked Amount	50.000	Range	70 - 125	Recovery	=	60.82%#
32) Benzene-d6	5.33	84	404281	31.68	µg/L	0.00
Spiked Amount	50.000	Range	70 - 125	Recovery	=	63.36%#
36) 1,2-Dichloropropane-d6	6.32	67	134181	30.73	µg/L	0.00
Spiked Amount	50.000	Range	70 - 120	Recovery	=	61.46%#
41) Toluene-d8	7.56	98	353778	30.86	µg/L	0.00
Spiked Amount	50.000	Range	80 - 120	Recovery	=	61.72%#
43) trans-1,3-Dichloropropene-	7.85	79	58314	28.40	µg/L	0.00
Spiked Amount	50.000	Range	60 - 125	Recovery	=	56.80%#
47) 2-Hexanone-d5	8.32	63	139888	59.12	µg/L	0.02
Spiked Amount	100.000	Range	45 - 130	Recovery	=	59.12%
57) 1,1,2,2-Tetrachloroethane-	10.43	84	194236	31.08	µg/L	0.00
Spiked Amount	50.000	Range	65 - 120	Recovery	=	62.16%#
64) 1,2-Dichlorobenzene-d4	11.86	152	128879	30.20	µg/L	0.00
Spiked Amount	50.000	Range	80 - 120	Recovery	=	60.40%#

Target Compounds					Ovalue
16) Methylene chloride	2.68	84	2473	0.633	µg/L 96
46) Tetrachloroethene	8.23	164	7935	3.050	µg/L 85

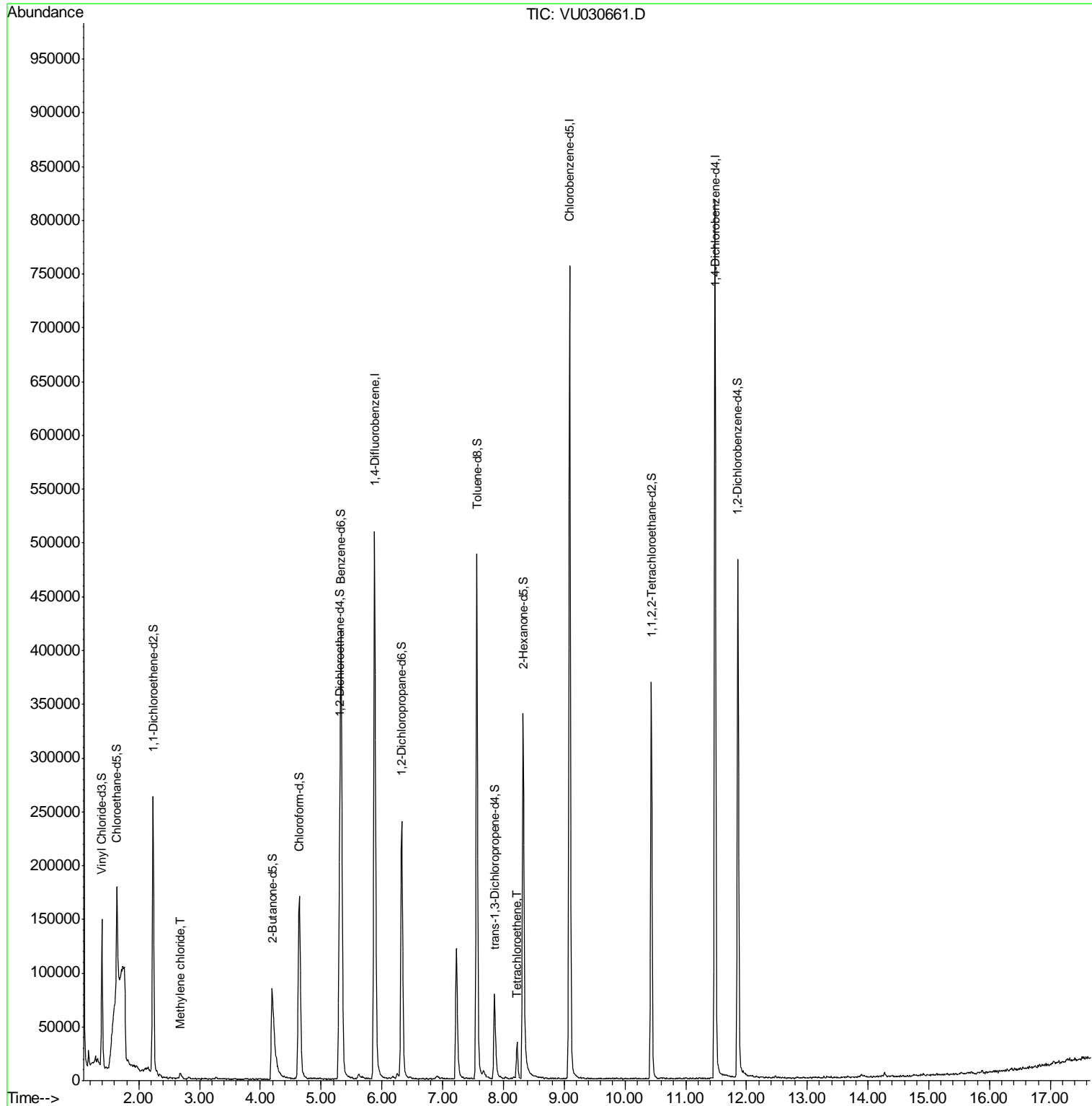
(#) = qualifier out of range (m) = manual integration (+) = signals summed

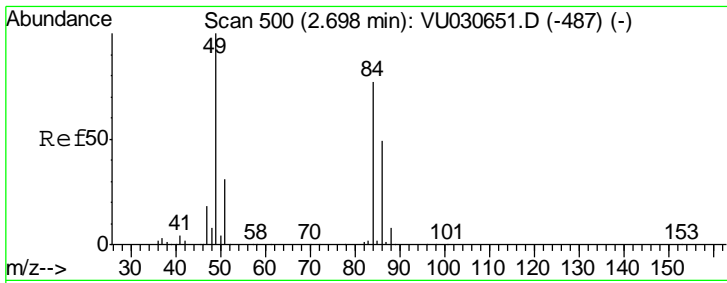
Data Path : Z:\VOASRV\HPCHEM1\MSVOA U\DATA\VU040419\
 Data File : VU030661.D
 Acq On : 04 Apr 2019 04:59
 Operator : JC/SP
 Sample : K2215-19
 Misc : 5.90µ/5mL/100uL/5.0mL/MSVOA_U/MEOH
 ALS Vial : 39 Sample Multiplier: 1

Instrument :
 MSVOA_U
Client Sampled :
 BF2P9

Manual Integrations
APPROVED
 MMDadoda
 4/4/2019 11:40:01 AM

Quant Time: Apr 04 08:39:23 2019
 Quant Method : Z:\VOASRV\HPCHEM1\MSVOA_U\METHOD\SOMULM032319WMA.M
 Quant Title : VOC Analysis
 QLast Update : Thu Apr 04 07:55:17 2019
 Response via : Initial Calibration





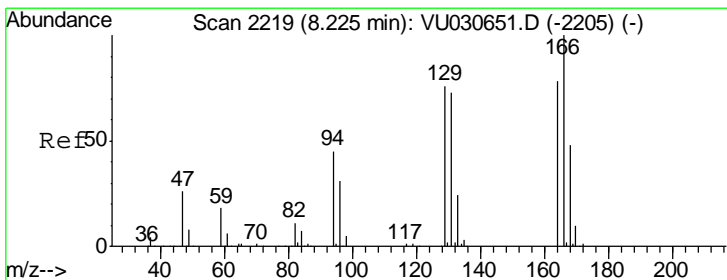
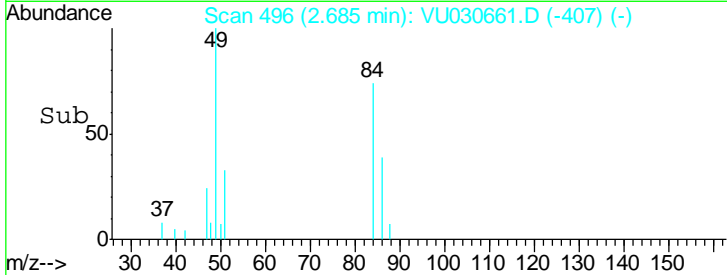
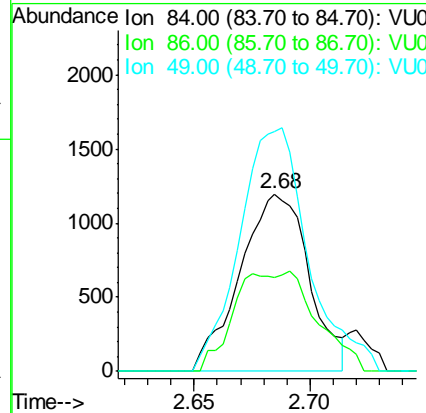
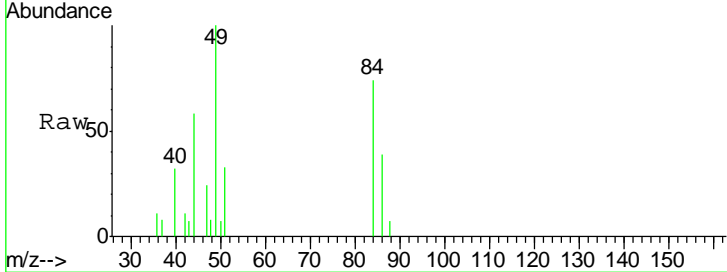
#16
 Methylene chloride
 Concen: 0.633 ug/L
 RT: 2.68 min Scan# 496
 Delta R.T. -0.01 min
 Lab File: VU030661.D
 Acq: 04 Apr 2019 04:59

Instrument :
 MSVOA_U
 ClientSampled :
 BF2P9

Tgt Ion	Resp	Lower	Upper
84	2473		
84	100		
86	53.0	44.3	82.3
49	135.3	94.9	176.3

Manual Integrations
 APPROVED

MMDadoda
 4/4/2019 11:40:01 AM



#46
 Tetrachloroethene
 Concen: 3.050 ug/L
 RT: 8.23 min Scan# 2220
 Delta R.T. 0.00 min
 Lab File: VU030661.D
 Acq: 04 Apr 2019 04:59

Tgt Ion	Resp	Lower	Upper
164	7935		
164	100		
129	85.7	68.1	126.5
131	88.4	67.7	125.7
166	106.8	92.4	171.6

