

Data Path : Z:\voasrv\HPCHEM1\MSVOA_U\Data\VU040423\
 Data File : VU053568.D
 Acq On : 04 Apr 2023 17:55
 Operator : JC/MD
 Sample : 02158-02DL 5X
 Misc : 5.0mL/MSVOA_U/WATER
 ALS Vial : 21 Sample Multiplier: 1

Instrument :
 MSVOA_U
 ClientSampleId :
 PMW-7D(20230329)DL

Quant Time: Apr 04 23:13:22 2023
 Quant Method : Z:\voasrv\HPCHEM1\MSVOA_U\Method\SFAMULM033123WMA.M
 Quant Title : VOC Analysis
 QLast Update : Sat Apr 01 04:51:17 2023
 Response via : Initial Calibration

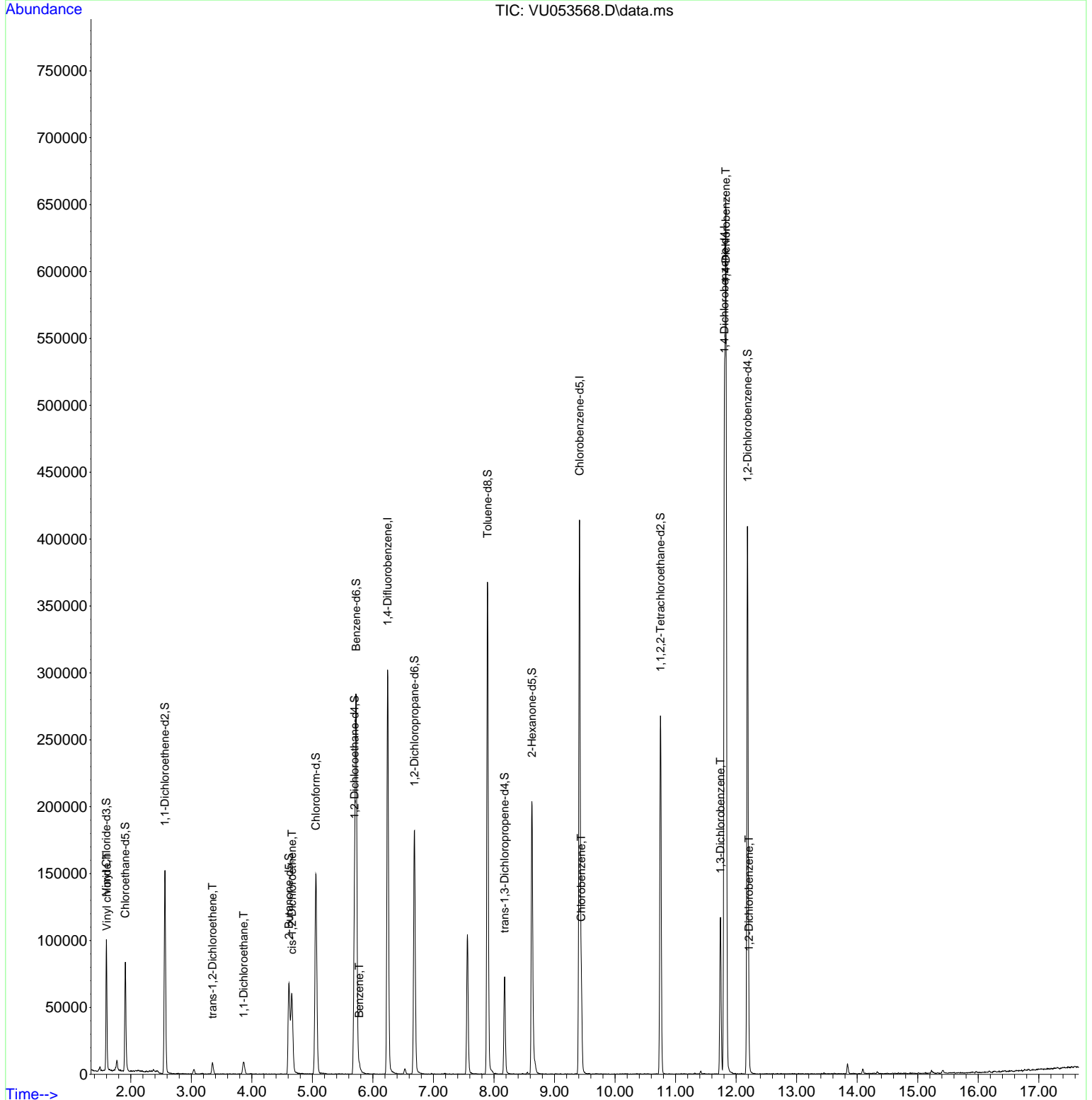
Compound	R.T.	QIon	Response	Conc	Units	Dev(Min)
Internal Standards						
1) 1,4-Difluorobenzene	6.243	114	259091	50.000	ug/L	0.00
28) Chlorobenzene-d5	9.414	117	241921	50.000	ug/L	0.00
58) 1,4-Dichlorobenzene-d4	11.806	152	126866	50.000	ug/L	0.00
System Monitoring Compounds						
4) Vinyl Chloride-d3	1.597	65	69771	34.584	ug/L	0.00
Spiked Amount	50.000	Range 60 - 135	Recovery =	69.160%		
7) Chloroethane-d5	1.909	69	62828	40.391	ug/L	0.00
Spiked Amount	50.000	Range 70 - 130	Recovery =	80.780%		
11) 1,1-Dichloroethene-d2	2.565	63	86411	27.670	ug/L	0.00
Spiked Amount	50.000	Range 60 - 125	Recovery =	55.340%#		
21) 2-Butanone-d5	4.613	46	94719	103.698	ug/L	0.00
Spiked Amount	100.000	Range 40 - 130	Recovery =	103.700%		
24) Chloroform-d	5.057	84	137315	41.156	ug/L	0.00
Spiked Amount	50.000	Range 70 - 125	Recovery =	82.320%		
26) 1,2-Dichloroethane-d4	5.697	65	89115	45.201	ug/L	0.00
Spiked Amount	50.000	Range 70 - 125	Recovery =	90.400%		
32) Benzene-d6	5.722	84	272219	41.687	ug/L	0.00
Spiked Amount	50.000	Range 70 - 125	Recovery =	83.380%		
36) 1,2-Dichloropropane-d6	6.687	67	89355	44.768	ug/L	0.00
Spiked Amount	50.000	Range 70 - 120	Recovery =	89.540%		
41) Toluene-d8	7.893	98	253865	39.114	ug/L	0.00
Spiked Amount	50.000	Range 80 - 120	Recovery =	78.220%#		
43) trans-1,3-Dichloroprop...	8.176	79	41851	40.620	ug/L	0.00
Spiked Amount	50.000	Range 60 - 125	Recovery =	81.240%		
47) 2-Hexanone-d5	8.626	63	72990	107.150	ug/L	0.00
Spiked Amount	100.000	Range 45 - 130	Recovery =	107.150%		
56) 1,1,2,2-Tetrachloroeth...	10.751	84	130849	46.513	ug/L	0.00
Spiked Amount	50.000	Range 65 - 120	Recovery =	93.020%		
66) 1,2-Dichlorobenzene-d4	12.188	152	108794	41.083	ug/L	0.00
Spiked Amount	50.000	Range 80 - 120	Recovery =	82.160%		
Target Compounds						
5) Vinyl chloride	1.604	62	2965	1.481	ug/L #	45
17) trans-1,2-Dichloroethene	3.350	96	3735	2.338	ug/L	99
19) 1,1-Dichloroethane	3.864	63	11223	4.240	ug/L	96
20) cis-1,2-Dichloroethene	4.665	96	30216	16.373	ug/L	91
33) Benzene	5.774	78	5421	0.860	ug/L	100
51) Chlorobenzene	9.443	112	35825	7.279	ug/L	97
64) 1,3-Dichlorobenzene	11.741	146	47544	12.131	ug/L	96
65) 1,4-Dichlorobenzene	11.832	146	254276	63.656	ug/L	97
67) 1,2-Dichlorobenzene	12.211	146	4124	1.056	ug/L #	87

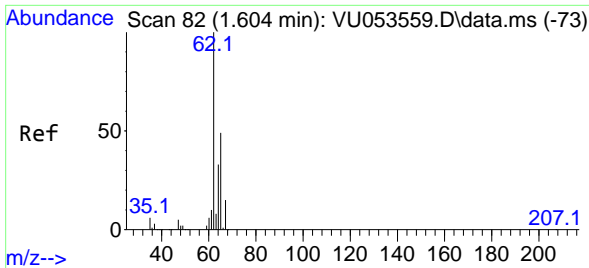
(#) = qualifier out of range (m) = manual integration (+) = signals summed

Data Path : Z:\voasrv\HPCHEM1\MSVOA_U\Data\VU040423\
 Data File : VU053568.D
 Acq On : 04 Apr 2023 17:55
 Operator : JC/MD
 Sample : 02158-02DL 5X
 Misc : 5.0mL/MSVOA_U/WATER
 ALS Vial : 21 Sample Multiplier: 1

Instrument :
 MSVOA_U
 ClientSampleId :
 PMW-7D(20230329)DL

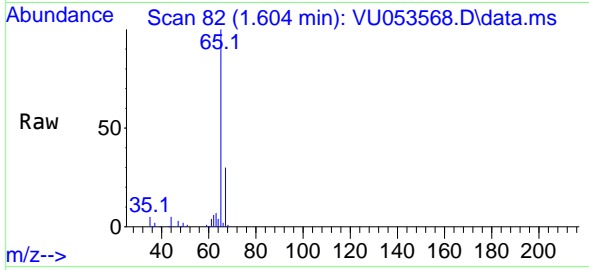
Quant Time: Apr 04 23:13:22 2023
 Quant Method : Z:\voasrv\HPCHEM1\MSVOA_U\Method\SFAMULM033123WMA.M
 Quant Title : VOC Analysis
 QLast Update : Sat Apr 01 04:51:17 2023
 Response via : Initial Calibration



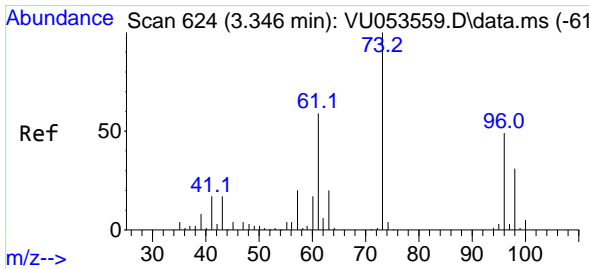
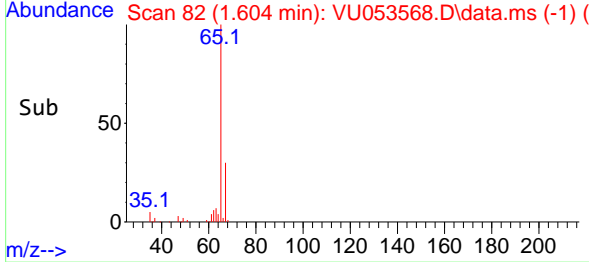
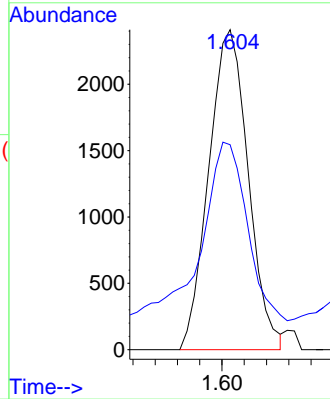


#5
 Vinyl chloride
 Concen: 1.481 ug/L
 RT: 1.604 min Scan# 81
 Delta R.T. -0.000 min
 Lab File: VU053568.D
 Acq: 04 Apr 2023 17:55

Instrument : MSVOA_U
 ClientSampleId : VU053568.D
 PMW-7D(20230329)DL

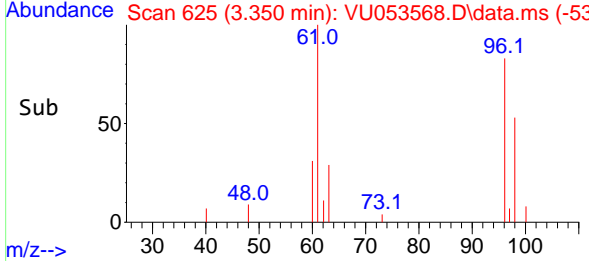
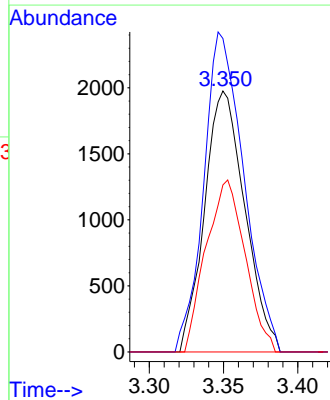
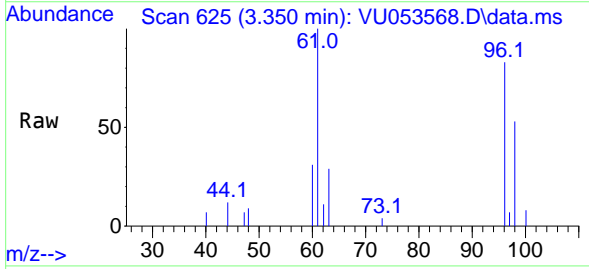


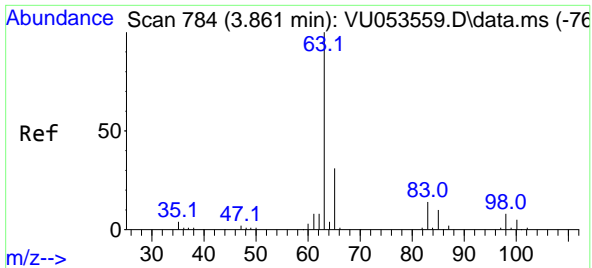
Tgt Ion: 62 Resp: 2965
 Ion Ratio Lower Upper
 62 100
 64 64.1 23.2 43.0#



#17
 trans-1,2-Dichloroethene
 Concen: 2.338 ug/L
 RT: 3.350 min Scan# 625
 Delta R.T. -0.000 min
 Lab File: VU053568.D
 Acq: 04 Apr 2023 17:55

Tgt Ion: 96 Resp: 3735
 Ion Ratio Lower Upper
 96 100
 61 120.1 84.4 156.8
 98 64.0 46.0 85.4



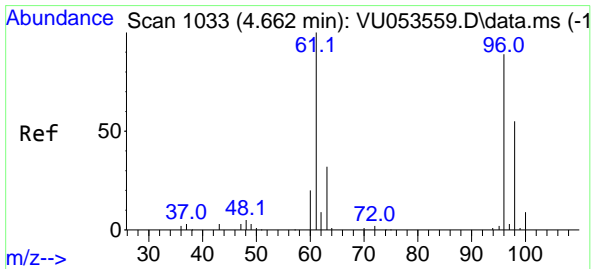
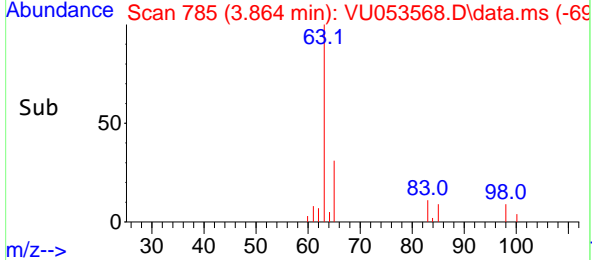
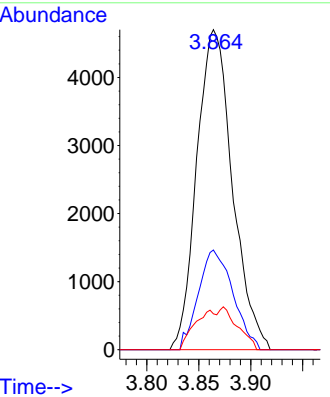
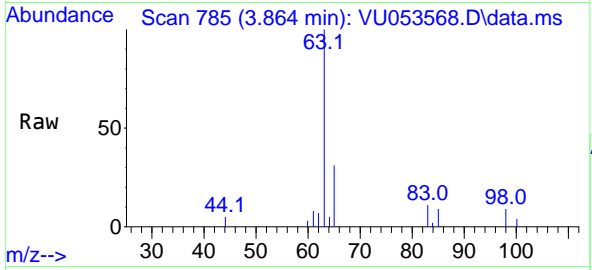


#19
 1,1-Dichloroethane
 Concen: 4.240 ug/L
 RT: 3.864 min Scan# 785
 Delta R.T. -0.000 min
 Lab File: VU053568.D
 Acq: 04 Apr 2023 17:55

Instrument : MSVOA_U
 ClientSampleId : VU053568.D
 PMW-7D(20230329)DL

Tgt Ion: 63 Resp: 11223

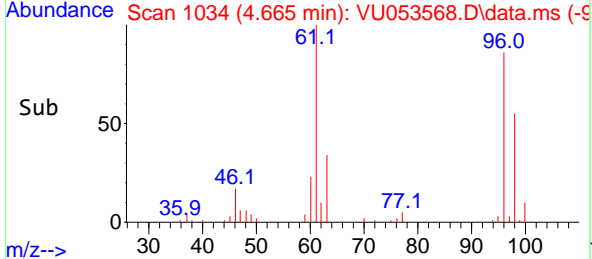
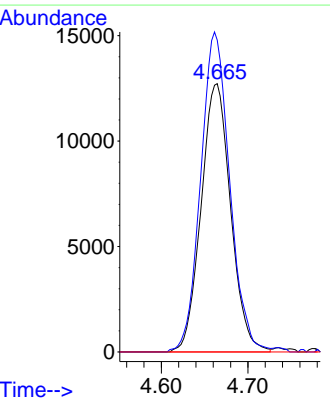
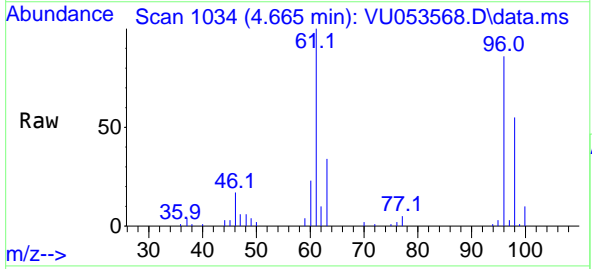
Ion	Ratio	Lower	Upper
63	100		
65	31.2	22.0	41.0
83	11.2	10.8	20.0

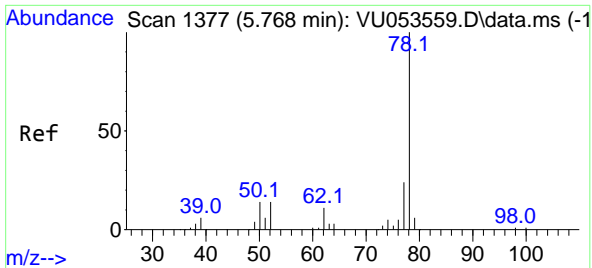


#20
 cis-1,2-Dichloroethene
 Concen: 16.373 ug/L
 RT: 4.665 min Scan# 1034
 Delta R.T. 0.003 min
 Lab File: VU053568.D
 Acq: 04 Apr 2023 17:55

Tgt Ion: 96 Resp: 30216

Ion	Ratio	Lower	Upper
96	100		
61	116.3	74.7	138.7
68	0.0	0.0	0.0

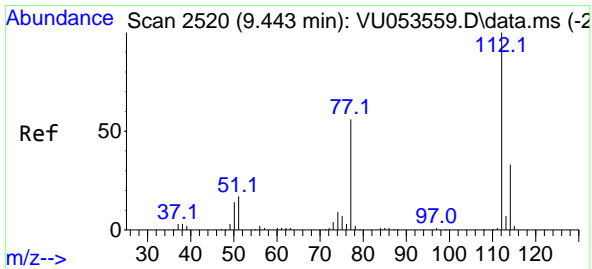
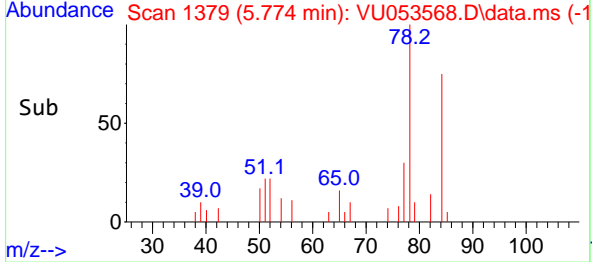
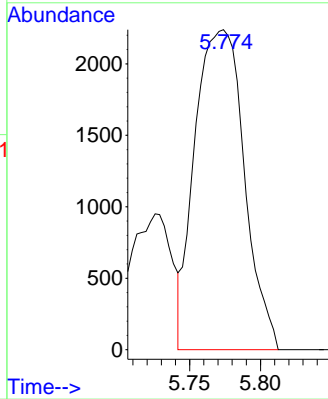
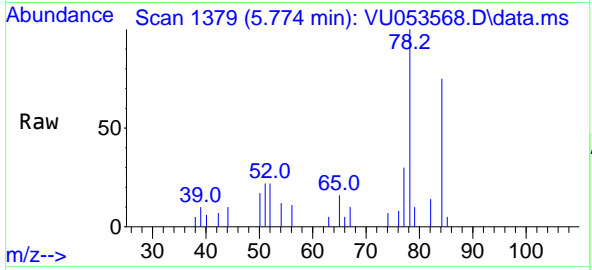




#33
Benzene
Concen: 0.860 ug/L
RT: 5.774 min Scan# 11
Delta R.T. 0.006 min
Lab File: VU053568.D
Acq: 04 Apr 2023 17:55

Tgt Ion: 78 Resp: 5421

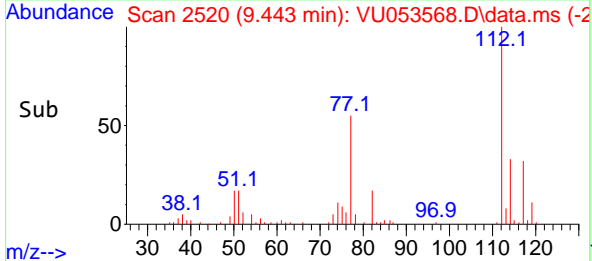
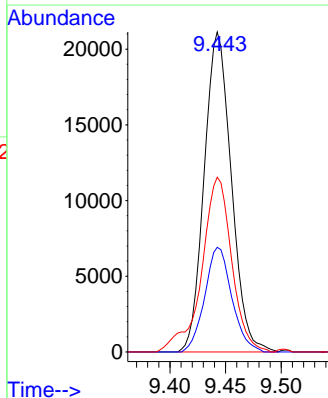
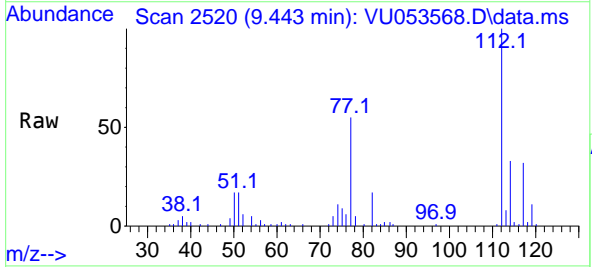
Instrument : MSVOA_U
ClientSampleId : VU053568.D
PMW-7D(20230329)DL

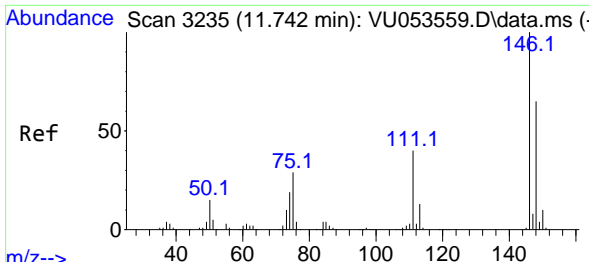


#51
Chlorobenzene
Concen: 7.279 ug/L
RT: 9.443 min Scan# 2520
Delta R.T. -0.000 min
Lab File: VU053568.D
Acq: 04 Apr 2023 17:55

Tgt Ion: 112 Resp: 35825

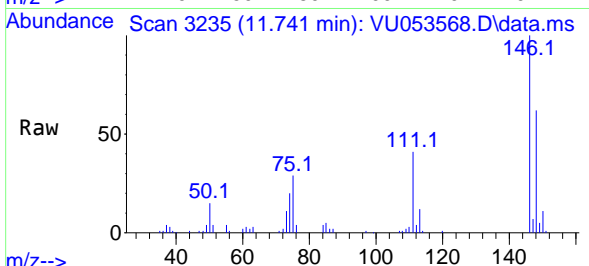
Ion	Ratio	Lower	Upper
112	100		
114	32.7	22.2	41.2
77	54.6	41.3	61.9



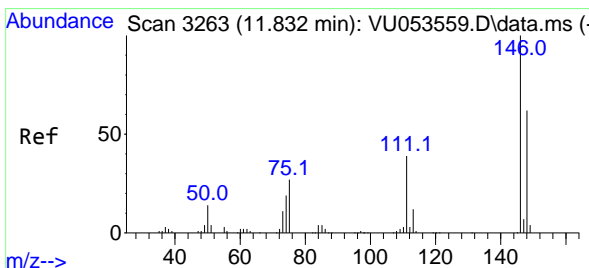
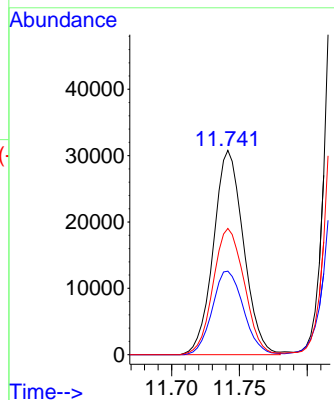
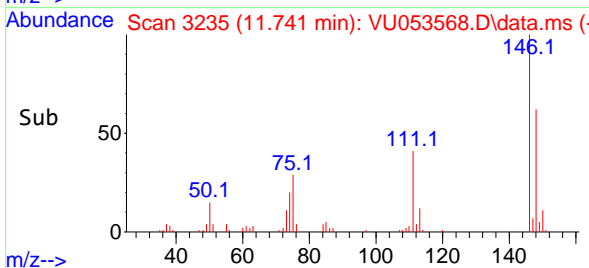


#64
 1,3-Dichlorobenzene
 Concen: 12.131 ug/L
 RT: 11.741 min Scan# 31
 Delta R.T. -0.000 min
 Lab File: VU053568.D
 Acq: 04 Apr 2023 17:55

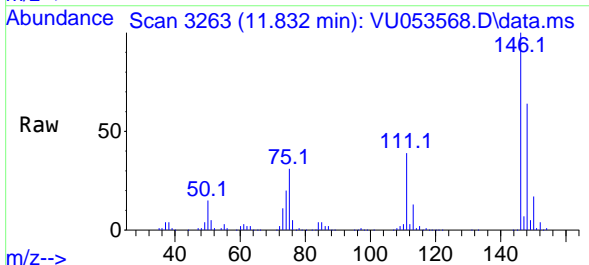
Instrument :
 MSVOA_U
 ClientSampleId :
 PMW-7D(20230329)DL



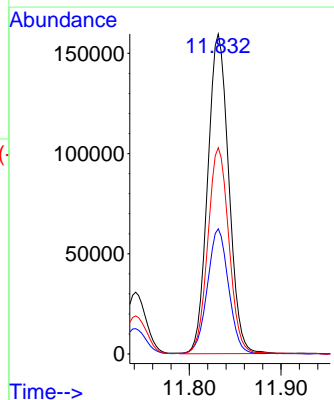
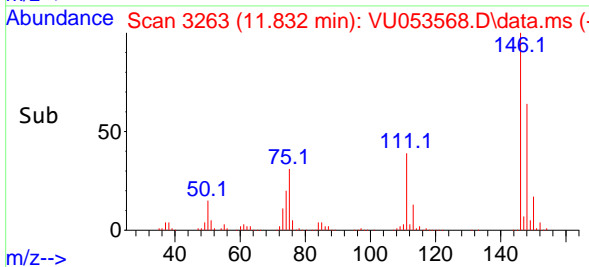
Tgt Ion:146 Resp: 47544
 Ion Ratio Lower Upper
 146 100
 111 40.9 25.7 47.7
 148 61.8 44.2 82.2

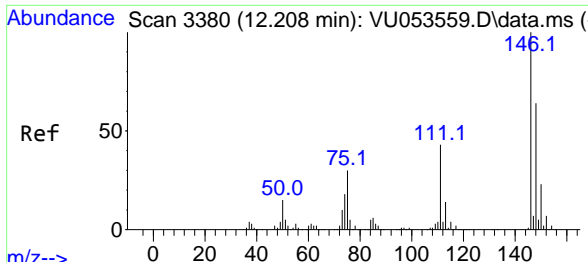


#65
 1,4-Dichlorobenzene
 Concen: 63.656 ug/L
 RT: 11.832 min Scan# 3263
 Delta R.T. -0.000 min
 Lab File: VU053568.D
 Acq: 04 Apr 2023 17:55



Tgt Ion:146 Resp: 254276
 Ion Ratio Lower Upper
 146 100
 111 39.1 25.1 46.5
 148 64.4 44.3 82.3





#67
 1,2-Dichlorobenzene
 Concen: 1.056 ug/L
 RT: 12.211 min Scan# 31
 Delta R.T. 0.003 min
 Lab File: VU053568.D
 Acq: 04 Apr 2023 17:55

Instrument : MSVOA_U
 ClientSampleId : PMW-7D(20230329)DL

Tgt Ion:146 Resp: 4124

Ion	Ratio	Lower	Upper
146	100		
111	44.2	31.5	47.3
148	77.4	51.6	77.4#

