

Data Path : Z:\voasrv\HPCHEM1\MSVOA_U\Data\VU040423\
 Data File : VU053572.D
 Acq On : 04 Apr 2023 19:30
 Operator : JC/MD
 Sample : 02158-17DL 20X
 Misc : 5.0mL/MSVOA_U/WATER
 ALS Vial : 25 Sample Multiplier: 1

Instrument :
 MSVOA_U
 ClientSampleId :
 PMW-2(20230330)DL

Integration Parameters: LSCINT.P
 Integrator: RTE
 Smoothing : OFF
 Sampling : 1
 Start Thrs : 0.2
 Stop Thrs : 0
 Filtering: 5
 Min Area: 0 % of largest Peak
 Max Peaks: 100
 Peak Location: TOP

If leading or trailing edge < 100 prefer < Baseline drop else tangent >
 Peak separation: 5

Method : Z:\voasrv\HPCHEM1\MSVOA_U\Method\SFAMULM033123WMA.M
 Title : VOC Analysis

Signal : TIC: VU053572.D\data.ms

peak #	R.T. min	first scan	max scan	last scan	PK TY	peak height	corr. area	corr. % max.	% of total
1	1.597	73	80	92	rVB	96219	109202	13.80%	1.485%
2	1.909	170	177	193	rVB	80697	108972	13.77%	1.482%
3	2.565	369	381	401	rBV2	170995	318015	40.17%	4.324%
4	2.941	496	498	503	rVB	351	221	0.03%	0.003%
5	3.044	521	530	547	rVB3	4943	9418	1.19%	0.128%
6	3.301	606	610	613	rBV2	319	301	0.04%	0.004%
7	3.395	636	639	643	rVB	323	180	0.02%	0.002%
8	3.478	663	665	666	rBV	200	66	0.01%	0.001%
9	3.774	756	757	760	rBV2	322	126	0.02%	0.002%
10	3.800	763	765	767	rBV	156	47	0.01%	0.001%
11	3.864	767	785	813	rBV2	203597	478588	60.46%	6.507%
12	4.153	873	875	876	rVB	205	47	0.01%	0.001%
13	4.359	936	939	941	rBV2	264	208	0.03%	0.003%
14	4.420	955	958	962	rBV2	178	139	0.02%	0.002%
15	4.440	962	964	965	rBV	174	92	0.01%	0.001%
16	4.510	985	986	987	rVB	202	39	0.00%	0.001%
17	4.613	1006	1018	1026	rBV	72720	161484	20.40%	2.196%
18	4.973	1128	1130	1132	rBV	149	60	0.01%	0.001%
19	5.057	1140	1156	1178	rBV2	140557	313046	39.55%	4.256%
20	5.472	1278	1285	1286	rBV	341	343	0.04%	0.005%
21	5.481	1286	1288	1294	rVB	366	180	0.02%	0.002%
22	5.507	1294	1296	1297	rBV	141	61	0.01%	0.001%
23	5.536	1303	1305	1309	rVB	164	69	0.01%	0.001%
24	5.597	1321	1324	1326	rBV	181	103	0.01%	0.001%
25	5.719	1341	1362	1395	rBV2	273907	776865	98.14%	10.563%
26	5.973	1437	1441	1447	rBB2	315	302	0.04%	0.004%
27	6.063	1467	1469	1470	rBV	135	32	0.00%	0.000%
28	6.115	1482	1485	1489	rBV2	251	220	0.03%	0.003%
29	6.137	1489	1492	1493	rBV2	165	90	0.01%	0.001%
30	6.163	1497	1500	1507	rVB2	280	279	0.04%	0.004%
31	6.243	1510	1525	1544	rBV	309516	587983	74.28%	7.995%
32	6.456	1588	1591	1592	rBV	220	103	0.01%	0.001%
33	6.494	1600	1603	1604	rBV2	126	70	0.01%	0.001%
34	6.539	1604	1617	1636	rVV	121085	229560	29.00%	3.121%
35	6.687	1649	1663	1682	rBV	173449	343795	43.43%	4.674%
36	6.793	1694	1696	1697	rBV2	405	162	0.02%	0.002%

Data Path : Z:\voasrv\HPCHEM1\MSVOA_U\Data\VU040423\
 Data File : VU053572.D
 Acq On : 04 Apr 2023 19:30
 Operator : JC/MD
 Sample : 02158-17DL 20X
 Misc : 5.0mL/MSVOA_U/WATER
 ALS Vial : 25 Sample Multiplier: 1

Instrument :
 MSVOA_U
 ClientSampleId :
 PMW-2(20230330)DL

Integration Parameters: LSCINT.P
 Integrator: RTE
 Smoothing : OFF
 Sampling : 1
 Start Thrs : 0.2
 Stop Thrs : 0
 Filtering: 5
 Min Area: 0 % of largest Peak
 Max Peaks: 100
 Peak Location: TOP

If leading or trailing edge < 100 prefer < Baseline drop else tangent >
 Peak separation: 5

Method : Z:\voasrv\HPCHEM1\MSVOA_U\Method\SFAMULM033123WMA.M
 Title : VOC Analysis

37	6.841	1709	1711	1718	rVB	262	252	0.03%	0.003%
38	6.903	1728	1730	1734	rVB2	248	111	0.01%	0.002%
39	7.340	1864	1866	1868	rBV	116	56	0.01%	0.001%
40	7.462	1901	1904	1905	rBV	222	110	0.01%	0.001%
41	7.562	1923	1935	1953	rBV	100886	177410	22.41%	2.412%
42	7.893	2025	2038	2060	rBV	355095	614739	77.66%	8.358%
43	8.073	2091	2094	2096	rBV2	385	268	0.03%	0.004%
44	8.176	2115	2126	2143	rBV	69153	119282	15.07%	1.622%
45	8.475	2217	2219	2222	rVB	358	185	0.02%	0.003%
46	8.491	2222	2224	2226	rBV	139	64	0.01%	0.001%
47	8.549	2238	2242	2243	rBV	700	463	0.06%	0.006%
48	8.626	2254	2266	2300	rBV	210315	389683	49.23%	5.298%
49	8.841	2328	2333	2334	rBV2	206	137	0.02%	0.002%
50	8.861	2335	2339	2342	rVB2	386	247	0.03%	0.003%
51	8.960	2368	2370	2373	rBV	256	130	0.02%	0.002%
52	9.086	2405	2409	2412	rVB2	352	246	0.03%	0.003%
53	9.105	2413	2415	2419	rBV	207	110	0.01%	0.001%
54	9.144	2425	2427	2431	rVB	268	137	0.02%	0.002%
55	9.414	2498	2511	2532	rBV	427529	720454	91.01%	9.796%
56	9.639	2579	2581	2583	rVB	227	106	0.01%	0.001%
57	9.822	2635	2638	2641	rBV	420	292	0.04%	0.004%
58	9.877	2652	2655	2658	rBV	277	179	0.02%	0.002%
59	9.960	2679	2681	2683	rBV	224	137	0.02%	0.002%
60	10.015	2697	2698	2699	rBV	149	31	0.00%	0.000%
61	10.124	2728	2732	2735	rBV3	467	289	0.04%	0.004%
62	10.372	2805	2809	2811	rBV2	194	154	0.02%	0.002%
63	10.623	2885	2887	2889	rBV2	285	176	0.02%	0.002%
64	10.751	2914	2927	2947	rVB	271314	431730	54.54%	5.870%
65	11.687	3215	3218	3221	rBV	263	149	0.02%	0.002%
66	11.745	3228	3236	3243	rBV3	6087	8884	1.12%	0.121%
67	11.806	3244	3255	3279	rVV	471638	791593	100.00%	10.763%
68	12.050	3328	3331	3332	rBV	202	108	0.01%	0.001%
69	12.092	3340	3344	3350	rVB2	353	392	0.05%	0.005%
70	12.188	3361	3374	3392	rBV	394679	630983	79.71%	8.579%
71	12.539	3480	3483	3486	rVB	417	230	0.03%	0.003%
72	12.732	3539	3543	3544	rBV	303	223	0.03%	0.003%
73	13.082	3650	3652	3653	rBV	207	74	0.01%	0.001%
74	13.423	3755	3758	3759	rBV	335	171	0.02%	0.002%
75	13.574	3803	3805	3808	rVB	410	218	0.03%	0.003%
76	13.841	3878	3888	3901	rBV3	13952	23814	3.01%	0.324%

Data Path : Z:\voasrv\HPCHEM1\MSVOA_U\Data\VU040423\
Data File : VU053572.D
Acq On : 04 Apr 2023 19:30
Operator : JC/MD
Sample : 02158-17DL 20X
Misc : 5.0mL/MSVOA_U/WATER
ALS Vial : 25 Sample Multiplier: 1

Instrument :
MSVOA_U
ClientSampleId :
PMW-2(20230330)DL

Integration Parameters: LSCINT.P
Integrator: RTE
Smoothing : OFF Filtering: 5
Sampling : 1 Min Area: 0 % of largest Peak
Start Thrs: 0.2 Max Peaks: 100
Stop Thrs : 0 Peak Location: TOP

If leading or trailing edge < 100 prefer < Baseline drop else tangent >
Peak separation: 5

Method : Z:\voasrv\HPCHEM1\MSVOA_U\Method\SFAMULM033123WMA.M
Title : VOC Analysis

77	14.433	4068	4072	4073	rBV	487	294	0.04%	0.004%
----	--------	------	------	------	-----	-----	-----	-------	--------

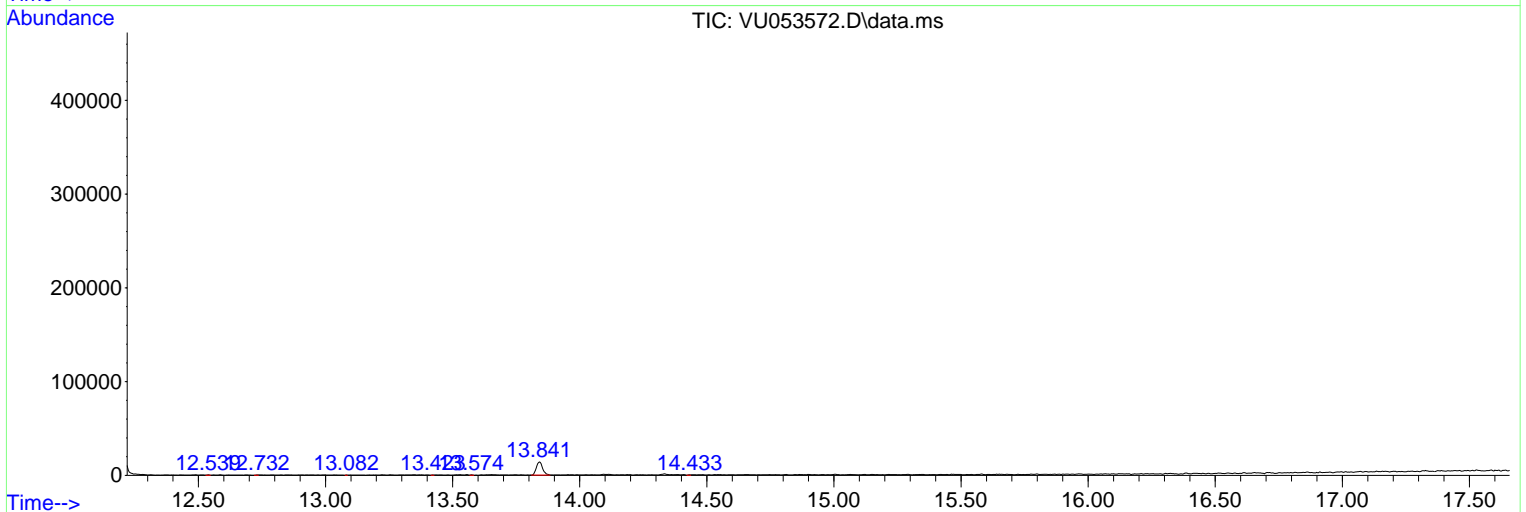
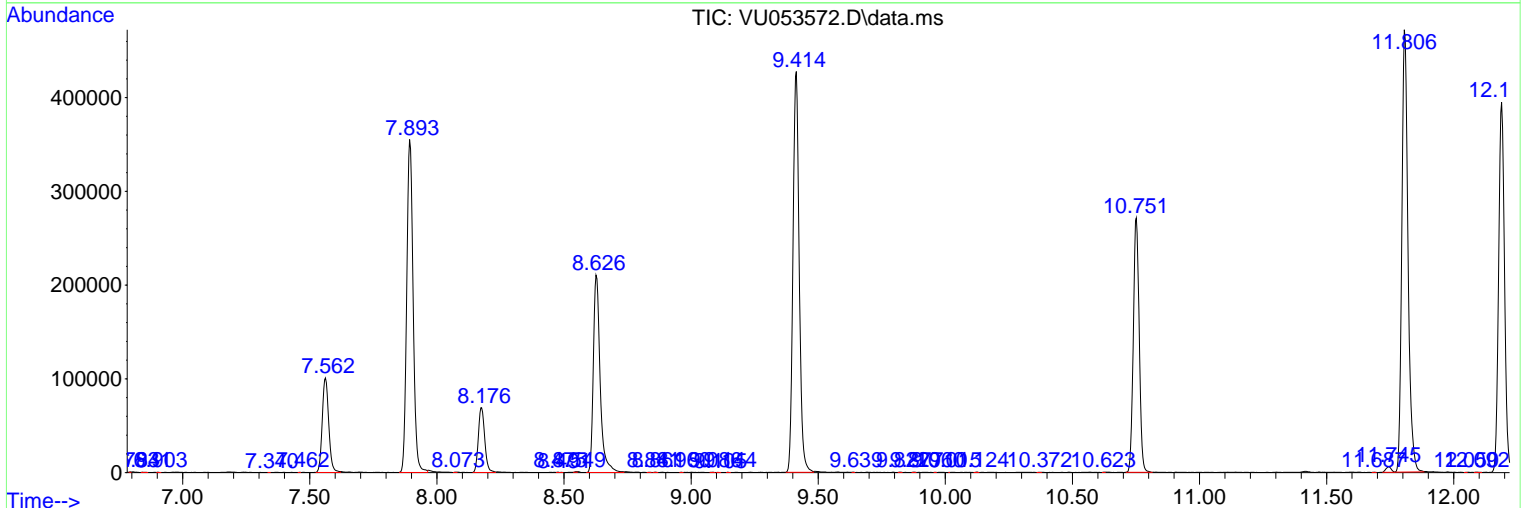
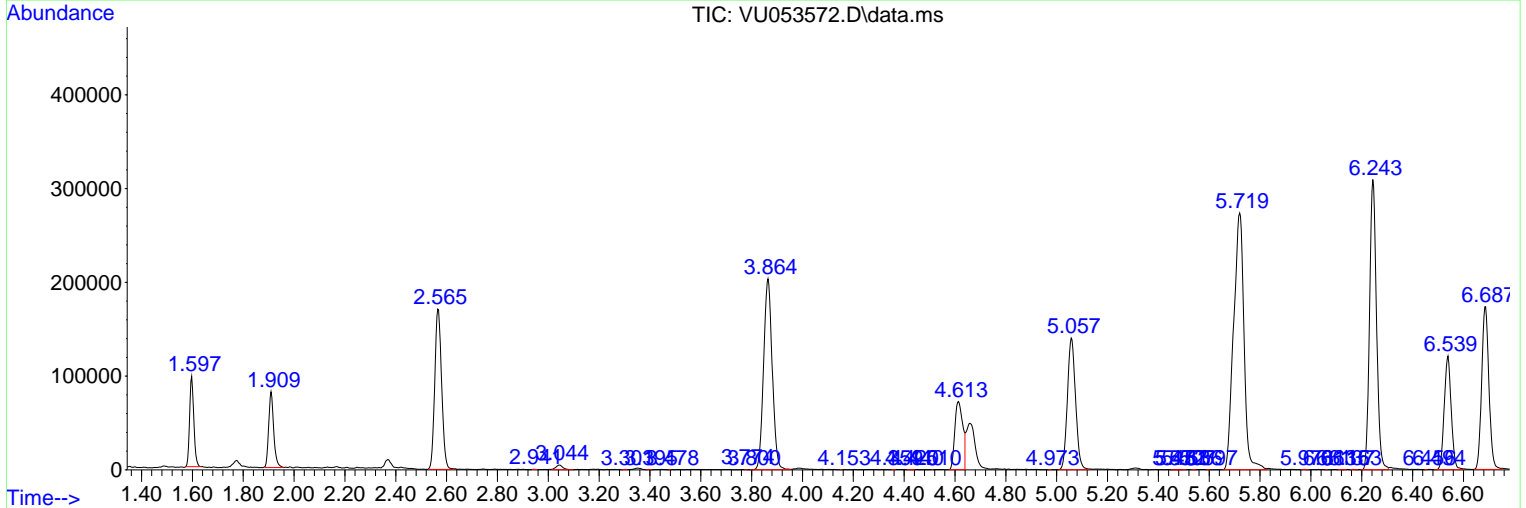
Sum of corrected areas: 7354779

Data Path : Z:\voasrv\HPCHEM1\MSVOA_U\Data\VU040423\
 Data File : VU053572.D
 Acq On : 04 Apr 2023 19:30
 Operator : JC/MD
 Sample : 02158-17DL 20X
 Misc : 5.0mL/MSVOA_U/WATER
 ALS Vial : 25 Sample Multiplier: 1

Instrument :
 MSVOA_U
 ClientSampleId :
 PMW-2(20230330)DL

Quant Method : Z:\voasrv\HPCHEM1\MSVOA_U\Method\SFAMULM033123WMA.M
 Quant Title : VOC Analysis

TIC Library : C:\Database\NIST20.L
 TIC Integration Parameters: LSCINT.P



Library Search Compound Report

Data Path : Z:\voasrv\HPCHEM1\MSVOA_U\Data\VU040423\
Data File : VU053572.D
Acq On : 04 Apr 2023 19:30
Operator : JC/MD
Sample : 02158-17DL 20X
Misc : 5.0mL/MSVOA_U/WATER
ALS Vial : 25 Sample Multiplier: 1

Instrument :
MSVOA_U
ClientSampleId :
PMW-2(20230330)DL

Quant Method : Z:\voasrv\HPCHEM1\MSVOA_U\Method\SFAMULM033123WMA.M
Quant Title : VOC Analysis

TIC Library : C:\Database\NIST20.L
TIC Integration Parameters: LSCINT.P

No Library Search Compounds Detected

Data Path : Z:\voasrv\HPCHEM1\MSVOA_U\Data\VU040423\
Data File : VU053572.D
Acq On : 04 Apr 2023 19:30
Operator : JC/MD
Sample : 02158-17DL 20X
Misc : 5.0mL/MSVOA_U/WATER
ALS Vial : 25 Sample Multiplier: 1

Instrument :
MSVOA_U
ClientSampleId :
PMW-2(20230330)DL

Quant Method : Z:\voasrv\HPCHEM1\MSVOA_U\Method\SFAMULM033123WMA.M
Quant Title : VOC Analysis

TIC Library : C:\Database\NIST0.L
TIC Integration Parameters: LSCINT.P

TIC Top Hit name	RT	EstConc	Units	Response	#	RT	Resp	Conc
------------------	----	---------	-------	----------	---	----	------	------
