

Data Path : Z:\VOASRV\HPCHEM1\MSVOA U\DATA\VU040519\
 Data File : VU030741.D
 Acq On : 05 Apr 2019 14:18
 Operator : JC/SP
 Sample : K2249-11 50X
 Misc : 5.0mL/MSVOA U/WATER
 ALS Vial : 58 Sample Multiplier: 1

Instrument :
 MSVOA_U
 ClientSampled :
 E3YE5

Quant Time: Apr 05 23:46:58 2019
 Quant Method : Z:\VOASRV\HPCHEM1\MSVOA_U\METHOD\SOMULM040519WMA.M
 Quant Title : VOC Analysis
 QLast Update : Fri Apr 05 23:39:17 2019
 Response via : Initial Calibration

Internal Standards	R.T.	QIon	Response	Conc	Units	Dev(Min)
1) 1,4-Difluorobenzene	5.88	114	445314	50.00	ug/L	0.00
28) Chlorobenzene-d5	9.09	117	440334	50.00	ug/L	0.00
60) 1,4-Dichlorobenzene-d4	11.48	152	182823	50.00	ug/L	0.00

System Monitoring Compounds

4) Vinyl Chloride-d3	1.40	65	191730	48.23	ug/L	0.00
Spiked Amount	50.000	Range	60 - 135	Recovery	=	96.46%
7) Chloroethane-d5	1.68	69	157046	52.05	ug/L	0.00
Spiked Amount	50.000	Range	70 - 130	Recovery	=	104.10%
11) 1,1-Dichloroethene-d2	2.27	63	274416	38.17	ug/L	0.00
Spiked Amount	50.000	Range	60 - 125	Recovery	=	76.34%
21) 2-Butanone-d5	4.17	46	342101	108.58	ug/L	0.00
Spiked Amount	100.000	Range	40 - 130	Recovery	=	108.58%
24) Chloroform-d	4.64	84	291503	48.00	ug/L	0.00
Spiked Amount	50.000	Range	70 - 125	Recovery	=	96.00%
26) 1,2-Dichloroethane-d4	5.31	65	214069	51.66	ug/L	0.00
Spiked Amount	50.000	Range	70 - 125	Recovery	=	103.32%
32) Benzene-d6	5.33	84	641707	49.92	ug/L	0.00
Spiked Amount	50.000	Range	70 - 125	Recovery	=	99.84%
36) 1,2-Dichloropropane-d6	6.32	67	225969	51.29	ug/L	0.00
Spiked Amount	50.000	Range	70 - 120	Recovery	=	102.58%
41) Toluene-d8	7.56	98	553793	48.60	ug/L	0.00
Spiked Amount	50.000	Range	80 - 120	Recovery	=	97.20%
43) trans-1,3-Dichloropropene-	7.85	79	93980	46.78	ug/L	0.00
Spiked Amount	50.000	Range	60 - 125	Recovery	=	93.56%
47) 2-Hexanone-d5	8.31	63	208203	103.41	ug/L	0.00
Spiked Amount	100.000	Range	45 - 130	Recovery	=	103.41%
57) 1,1,2,2-Tetrachloroethane-	10.43	84	296041	49.82	ug/L	0.00
Spiked Amount	50.000	Range	65 - 120	Recovery	=	99.64%
64) 1,2-Dichlorobenzene-d4	11.86	152	188548	52.44	ug/L	0.00
Spiked Amount	50.000	Range	80 - 120	Recovery	=	104.88%

Target Compounds

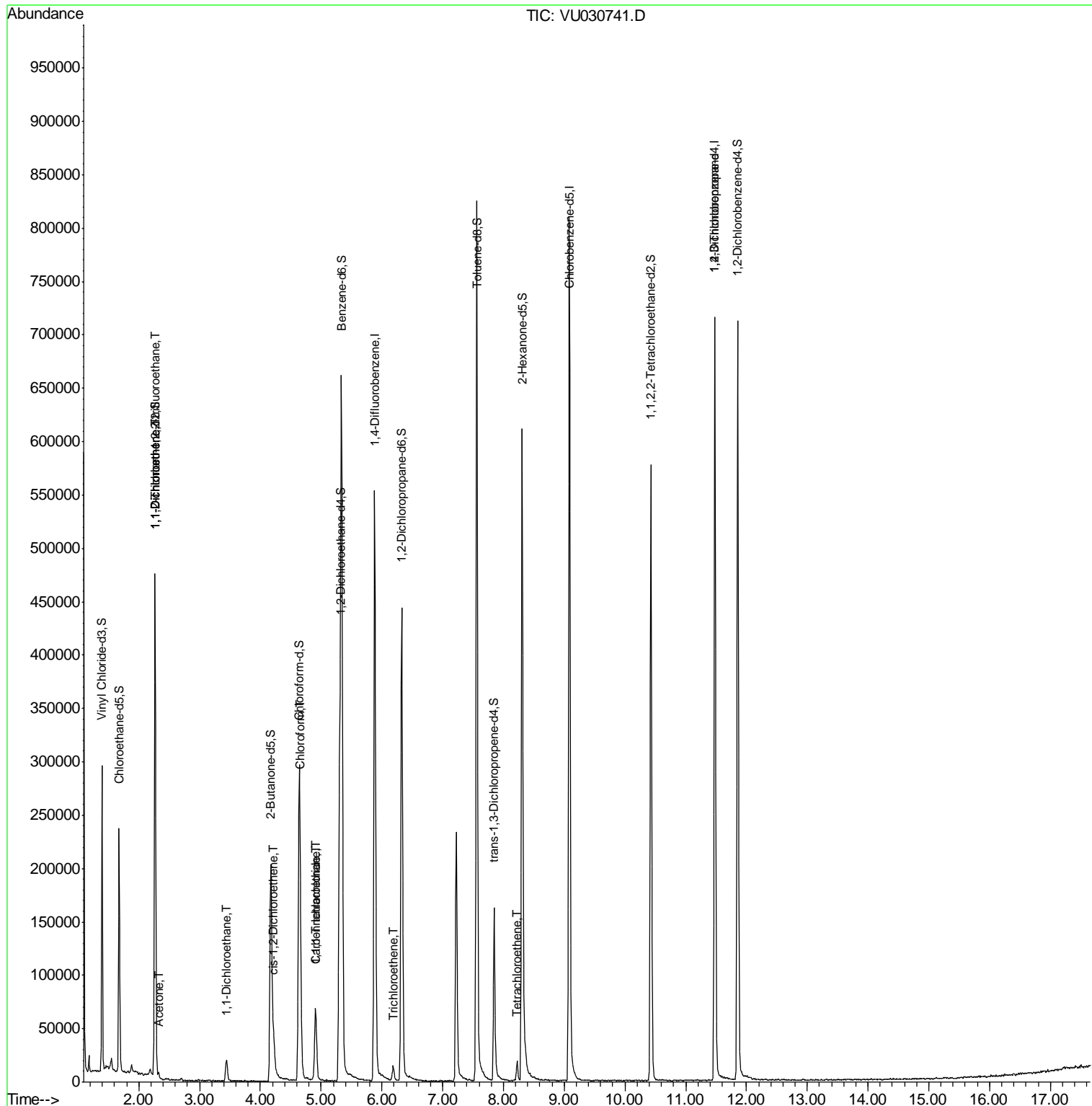
Target Compounds	R.T.	QIon	Response	Conc	Units	Ovalue
10) 1,1,2-Trichloro-1,2,2-trif	2.27	101	2420	0.759	ug/L #	20
12) 1,1-Dichloroethene	2.28	96	9899	3.216	ug/L #	1
13) Acetone	2.32	43	1578	0.489	ug/L	71
19) 1,1-Dichloroethane	3.44	63	22450	3.328	ug/L	99
20) cis-1,2-Dichloroethene	4.22	96	5887	1.631	ug/L	98
25) Chloroform	4.66	83	33346	4.919	ug/L	88
30) 1,1,1-Trichloroethane	4.91	97	51938	9.678	ug/L	99
31) Carbon tetrachloride	4.91	117	6749	1.459	ug/L	96
34) Trichloroethene	6.19	95	5243	1.483	ug/L	93
46) Tetrachloroethene	8.23	164	4317	1.680	ug/L	91
59) 1,2,3-Trichloropropane	11.48	75	22994	4.705	ug/L	96

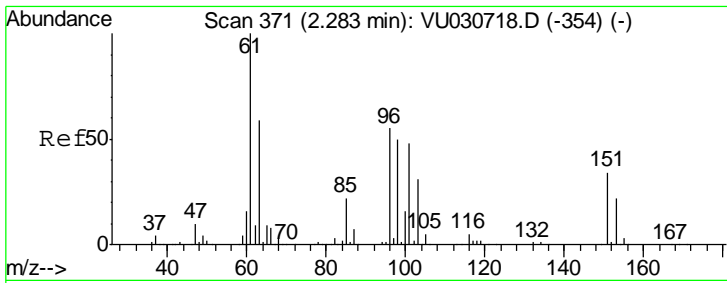
(#) = qualifier out of range (m) = manual integration (+) = signals summed

Data Path : Z:\VOASRV\HPCHEM1\MSVOA U\DATA\VU040519\
 Data File : VU030741.D
 Acq On : 05 Apr 2019 14:18
 Operator : JC/SP
 Sample : K2249-11 50X
 Misc : 5.0mL/MSVOA U/WATER
 ALS Vial : 58 Sample Multiplier: 1

Instrument :
 MSVOA_U
 ClientSampled :
 E3YE5

Quant Time: Apr 05 23:46:58 2019
 Quant Method : Z:\VOASRV\HPCHEM1\MSVOA_U\METHOD\SOMULM040519WMA.M
 Quant Title : VOC Analysis
 QLast Update : Fri Apr 05 23:39:17 2019
 Response via : Initial Calibration





#10

1,1,2-Trichloro-1,2,2-trifluoroethane

Concen: 0.759 ug/L

RT: 2.27 min Scan# 366

Delta R.T. -0.02 min

Lab File: VU030741.D

Acq: 05 Apr 2019 14:18

Instrument :
MSVOA_U
ClientSampled :
E3YE5

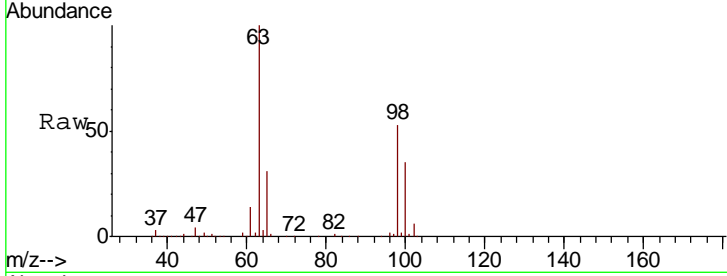
Tgt Ion: 101 Resp: 2420

Ion Ratio Lower Upper

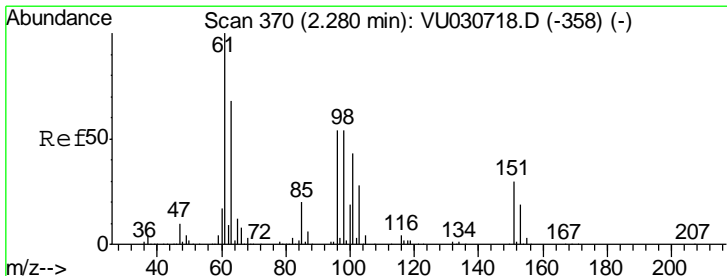
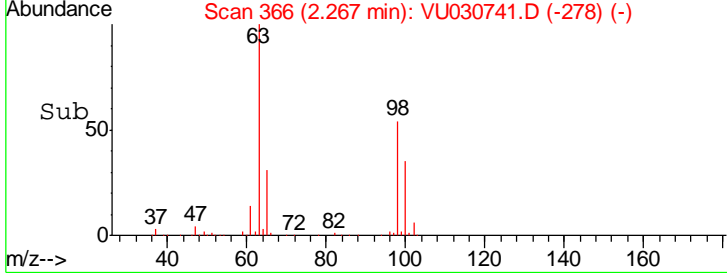
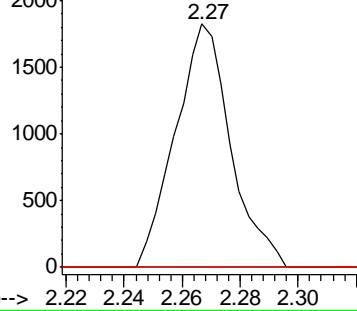
101 100

85 0.0 36.8 55.2#

151 0.0 57.4 86.0#



Abundance Ion 101.00 (100.70 to 101.70): V
2500 Ion 85.00 (84.70 to 85.70): VUC
Ion 151.00 (150.70 to 151.70): VUC



#12

1,1-Dichloroethene

Concen: 3.216 ug/L

RT: 2.28 min Scan# 369

Delta R.T. -0.00 min

Lab File: VU030741.D

Acq: 05 Apr 2019 14:18

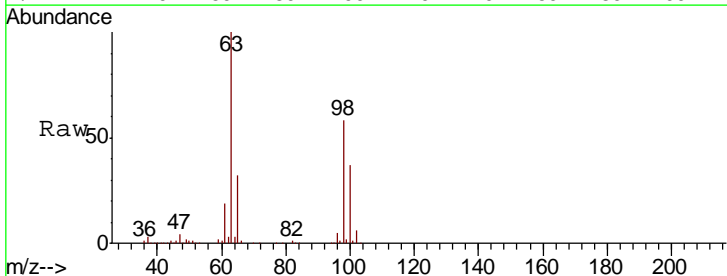
Tgt Ion: 96 Resp: 9899

Ion Ratio Lower Upper

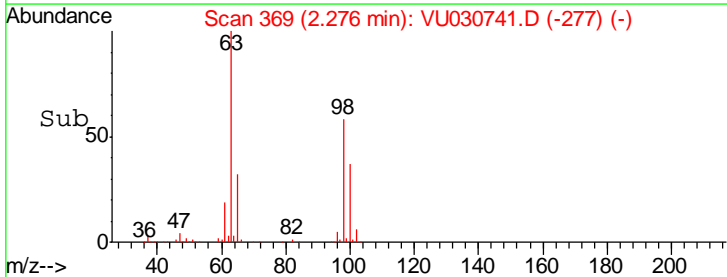
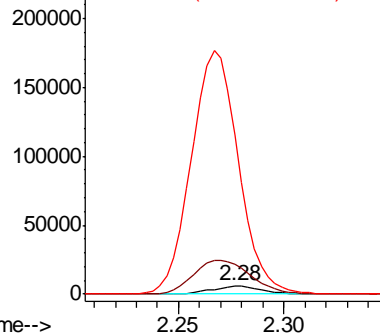
96 100

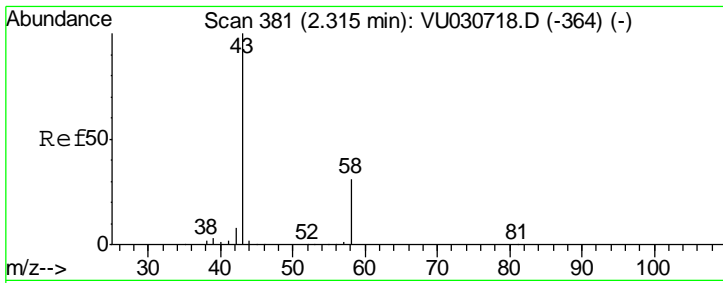
61 356.7 132.0 245.2#

63 1883.2 90.9 168.9#



Abundance Ion 96.00 (95.70 to 96.70): VUC
Ion 61.00 (60.70 to 61.70): VUC
Ion 63.00 (62.70 to 63.70): VUC

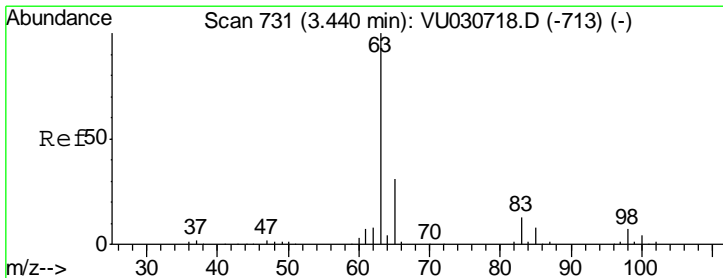
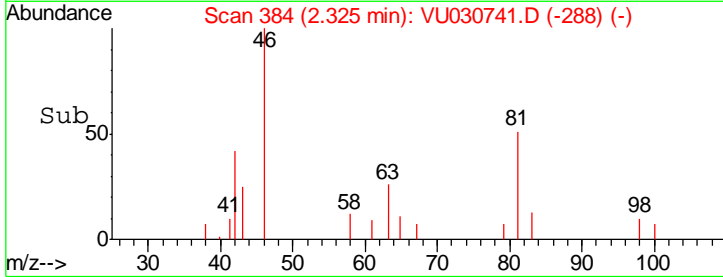
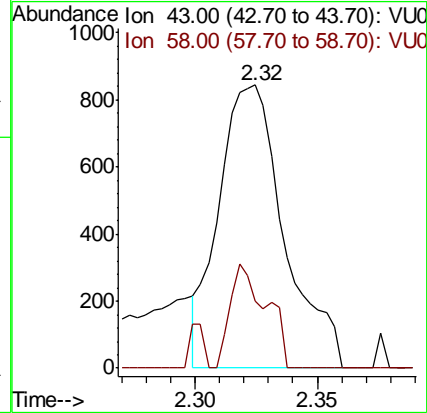
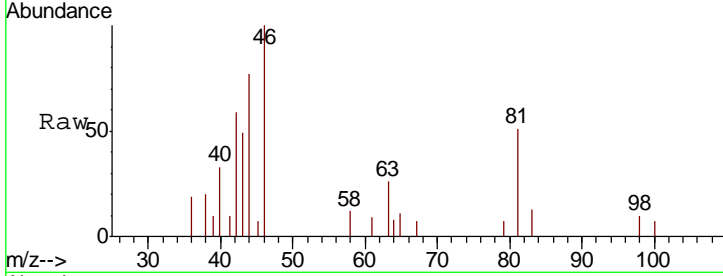




#13
 Acetone
 Concen: 0.489 ug/L
 RT: 2.32 min Scan# 384
 Delta R.T. 0.01 min
 Lab File: VU030741.D
 Acq: 05 Apr 2019 14:18

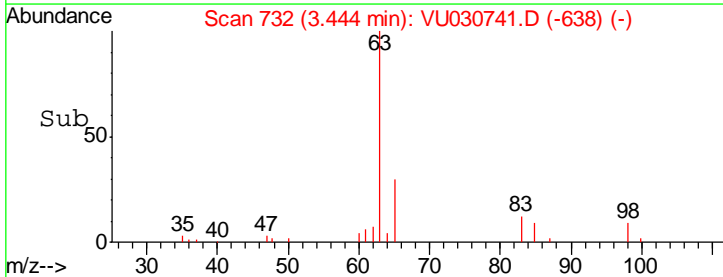
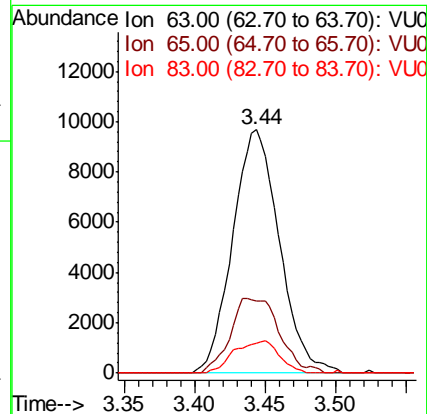
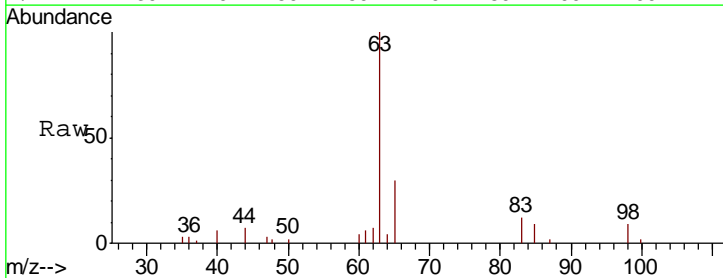
Instrument :
 MSVOA_U
ClientSampled :
 E3YE5

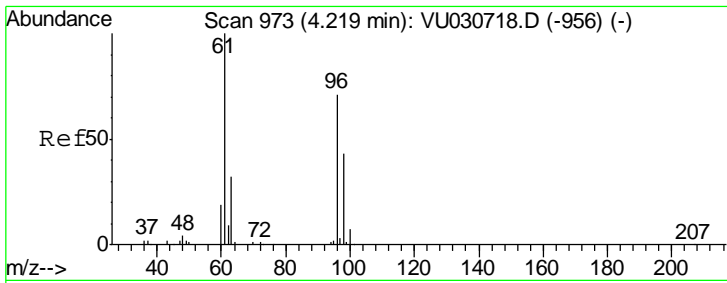
Tgt Ion	Resp	Lower	Upper
43	1578		
58	15.8	0.0	64.0



#19
 1,1-Dichloroethane
 Concen: 3.328 ug/L
 RT: 3.44 min Scan# 732
 Delta R.T. 0.00 min
 Lab File: VU030741.D
 Acq: 05 Apr 2019 14:18

Tgt Ion	Resp	Lower	Upper
63	22450		
65	29.7	21.4	39.8
83	12.3	8.5	15.7

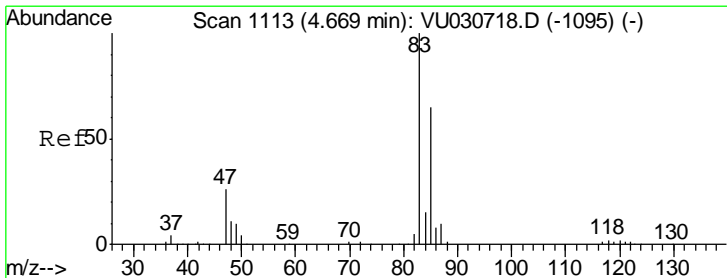
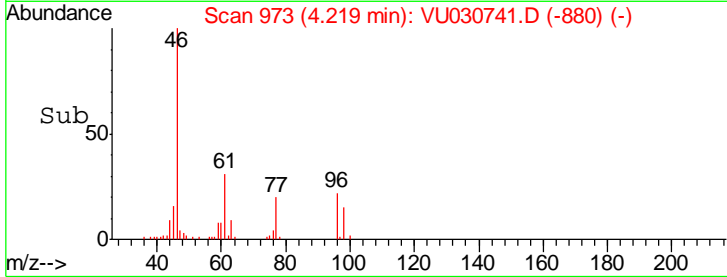
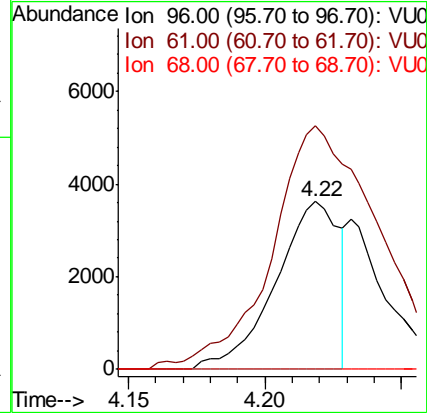
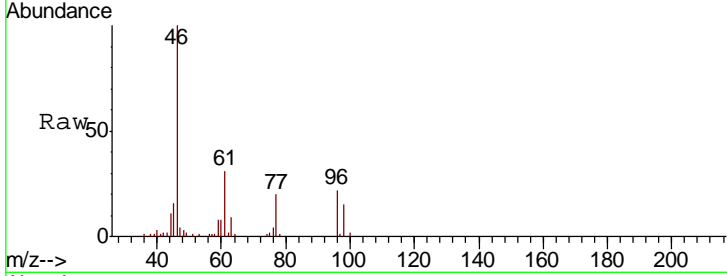




#20
 cis-1,2-Dichloroethene
 Concen: 1.631 ug/L
 RT: 4.22 min Scan# 973
 Delta R.T. -0.00 min
 Lab File: VU030741.D
 Acq: 05 Apr 2019 14:18

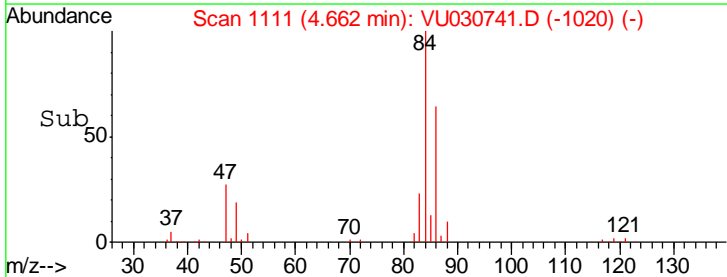
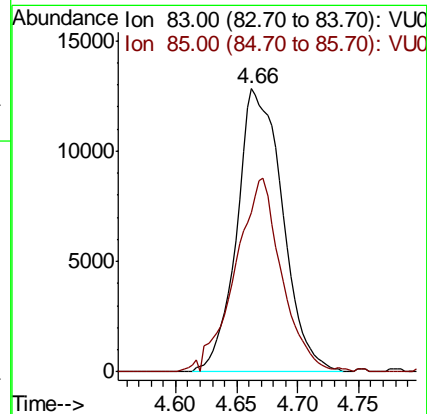
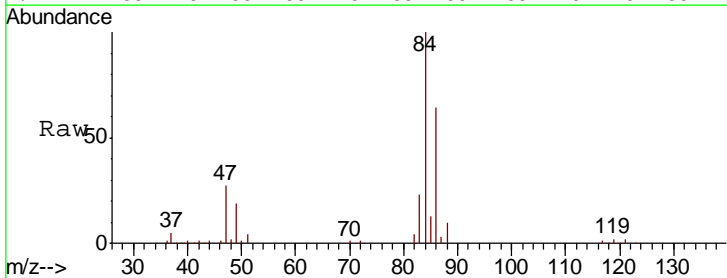
Instrument :
 MSVOA_U
 ClientSampled :
 E3YE5

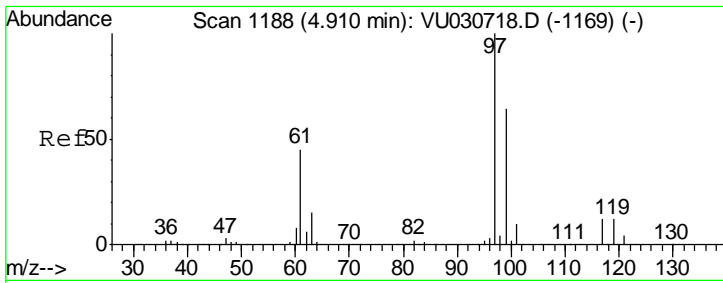
Tgt Ion	Resp	Lower	Upper
96	5887		
61	145.0	102.9	191.1
68	0.0	0.0	0.0



#25
 Chloroform
 Concen: 4.919 ug/L
 RT: 4.66 min Scan# 1111
 Delta R.T. -0.01 min
 Lab File: VU030741.D
 Acq: 05 Apr 2019 14:18

Tgt Ion	Resp	Lower	Upper
83	33346		
85	56.2	45.8	85.0

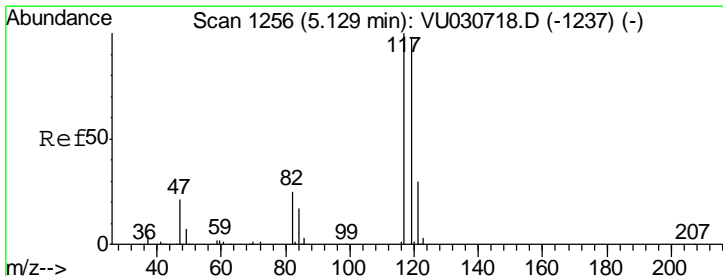
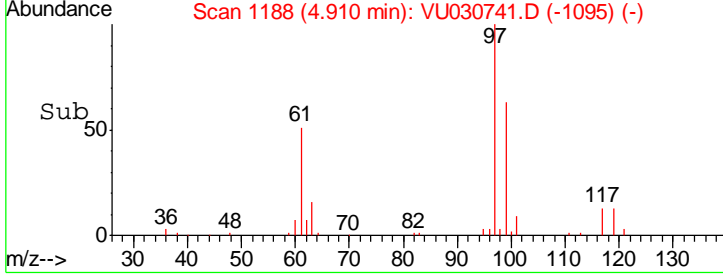
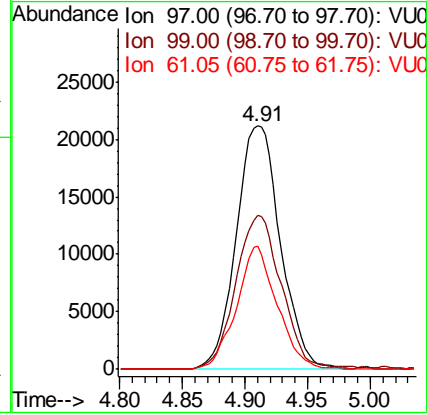
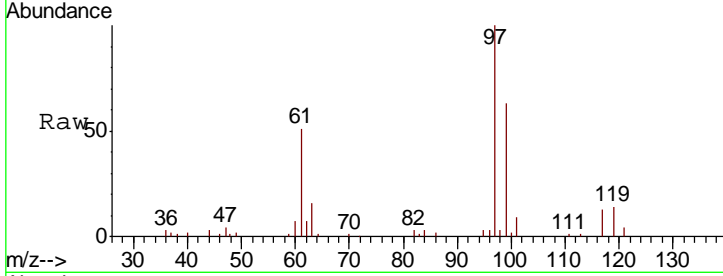




#30
 1,1,1-Trichloroethane
 Concen: 9.678 ug/L
 RT: 4.91 min Scan# 1188
 Delta R.T. -0.00 min
 Lab File: VU030741.D
 Acq: 05 Apr 2019 14:18

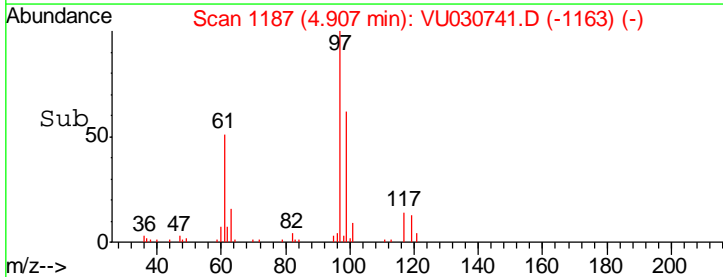
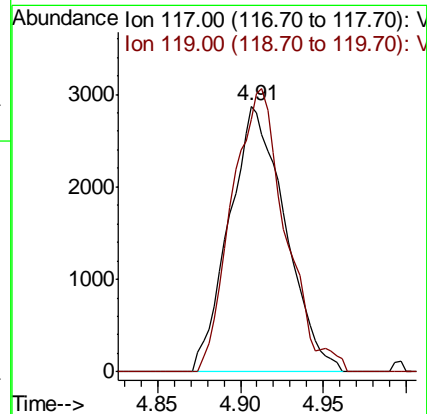
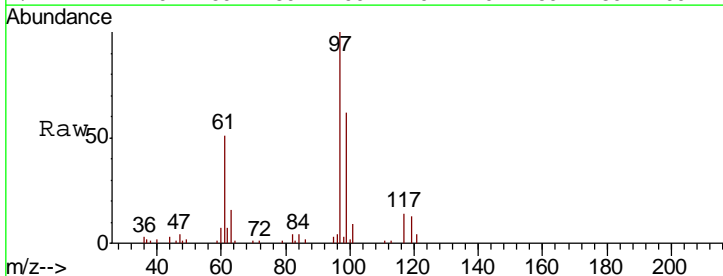
Instrument :
 MSVOA_U
 ClientSampled :
 E3YE5

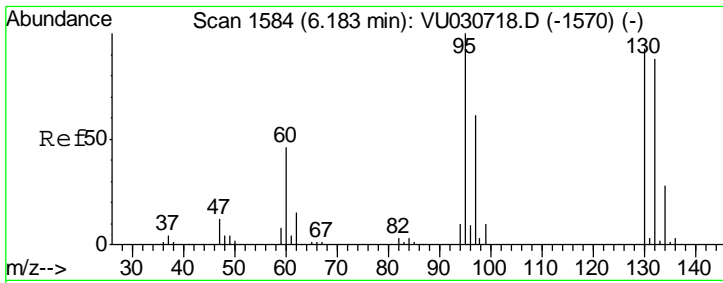
Tgt Ion	Resp	Lower	Upper
97	51938		
99	64.9	51.4	77.2
61	46.3	37.1	55.7



#31
 Carbon tetrachloride
 Concen: 1.459 ug/L
 RT: 4.91 min Scan# 1187
 Delta R.T. -0.22 min
 Lab File: VU030741.D
 Acq: 05 Apr 2019 14:18

Tgt Ion	Resp	Lower	Upper
117	6749		
119	98.7	76.2	114.2

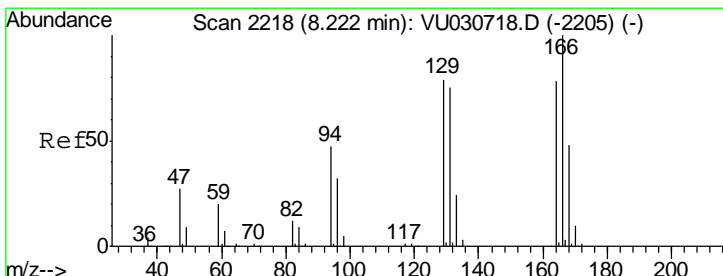
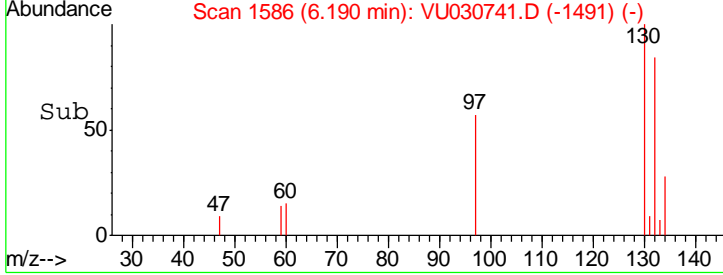
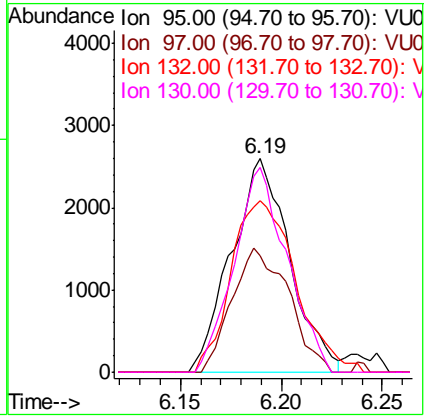
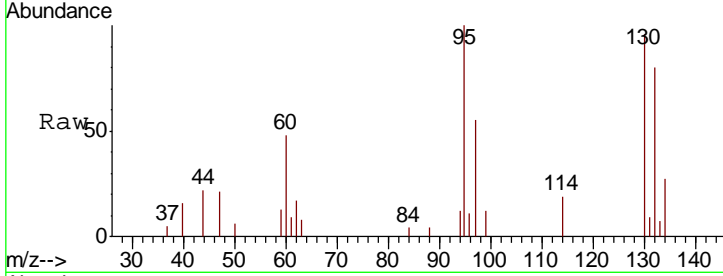




#34
 Trichloroethene
 Concen: 1.483 ug/L
 RT: 6.19 min Scan# 1586
 Delta R.T. 0.01 min
 Lab File: VU030741.D
 Acq: 05 Apr 2019 14:18

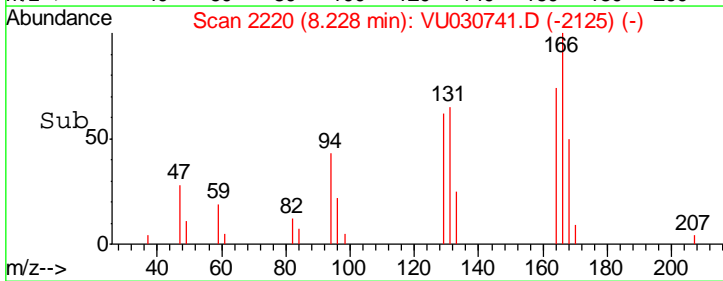
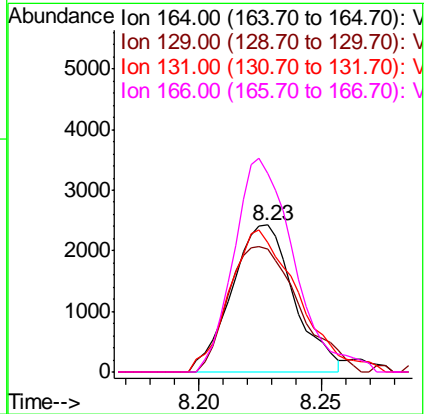
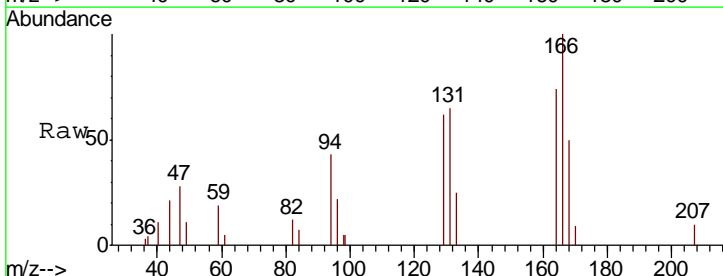
Instrument : MSVOA_U
 ClientSampled : E3YE5

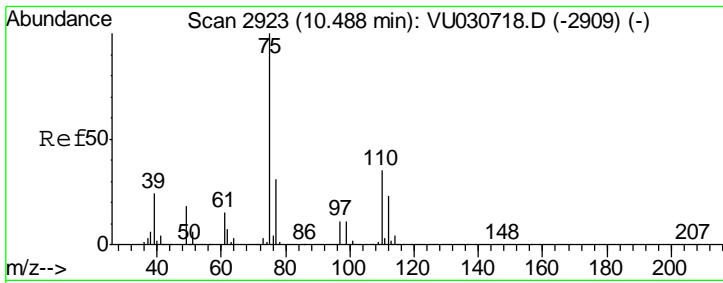
Tgt Ion	Resp	Lower	Upper
95	100		
97	54.7	44.5	82.7
132	80.1	61.5	114.1
130	95.9	64.9	120.5



#46
 Tetrachloroethene
 Concen: 1.680 ug/L
 RT: 8.23 min Scan# 2220
 Delta R.T. 0.01 min
 Lab File: VU030741.D
 Acq: 05 Apr 2019 14:18

Tgt Ion	Resp	Lower	Upper
164	100		
129	83.9	67.4	125.2
131	88.0	65.9	122.5
166	135.6	88.6	164.6





#59
 1,2,3-Trichloropropane
 Concen: 4.705 ug/L
 RT: 11.48 min Scan# 3231
 Delta R.T. 0.99 min
 Lab File: VU030741.D
 Acq: 05 Apr 2019 14:18

Instrument : MSVOA_U
 ClientSampled : E3YE5

Tot Ion	75	77	Ratio	Lower	Upper
Resp	22994				
Ion	100	35.0		26.1	39.1

