

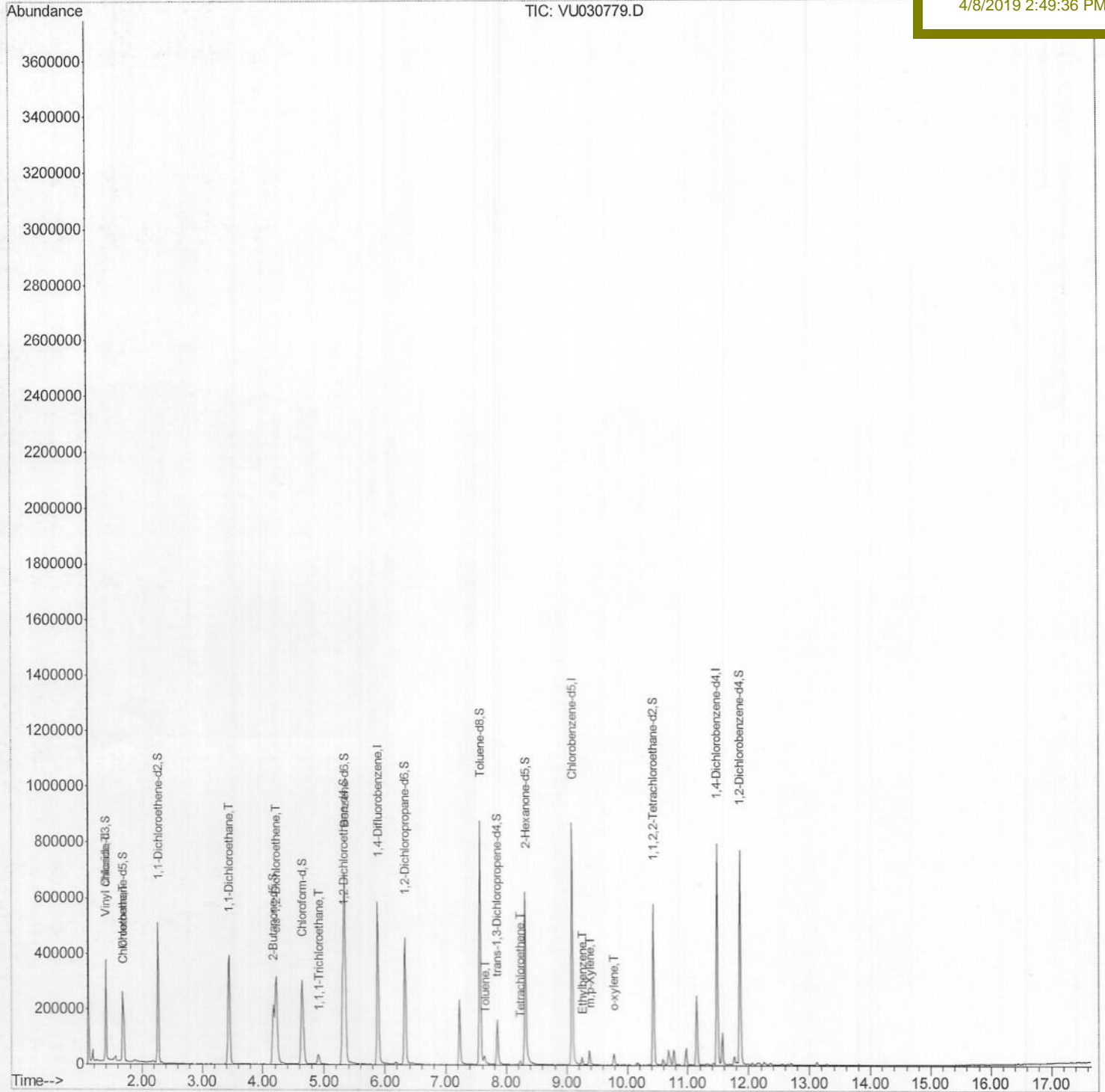
Data File : VU030779.D  
Acq On : 06 Apr 2019 06:24  
Operator : JC/SP  
Sample : K2249-09DL 10X  
Misc : 5.0mL/MSVOA\_U/WATER  
ALS Vial : 36 Sample Multiplier: 1

Quant Time: Apr 08 01:51:03 2019  
Quant Method : Z:\VOASRV\HPCHEM1\MSVOA\_U\METHOD\SOMULM040519WMA.M  
Quant Title : VOC Analysis  
QLast Update : Mon Apr 08 01:03:28 2019  
Response via : Initial Calibration

Instrument :  
MSVOA\_U  
Client Sampled :  
E3YE2DL

Manual Integrations  
APPROVED

MMDadoda  
4/8/2019 2:49:36 PM



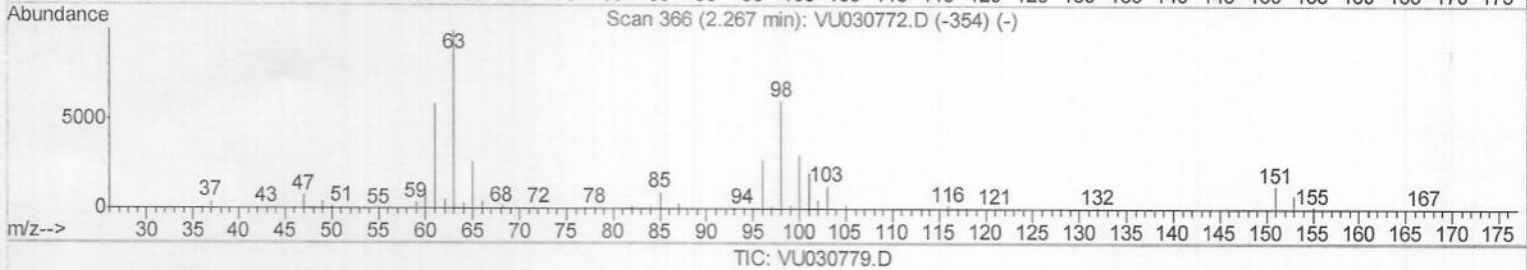
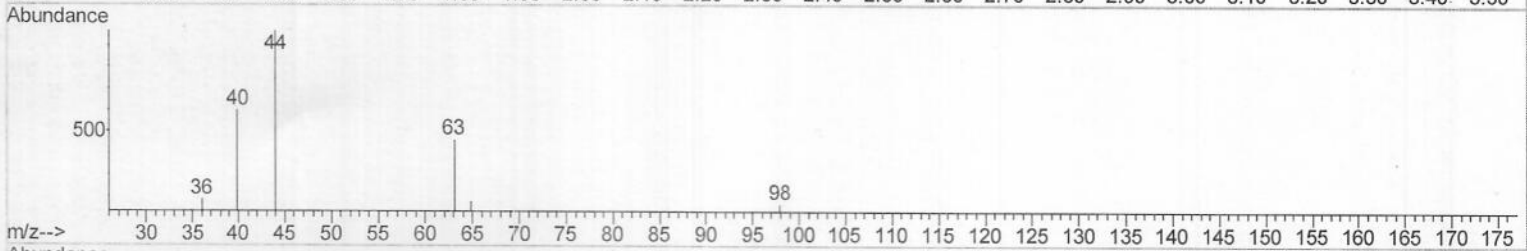
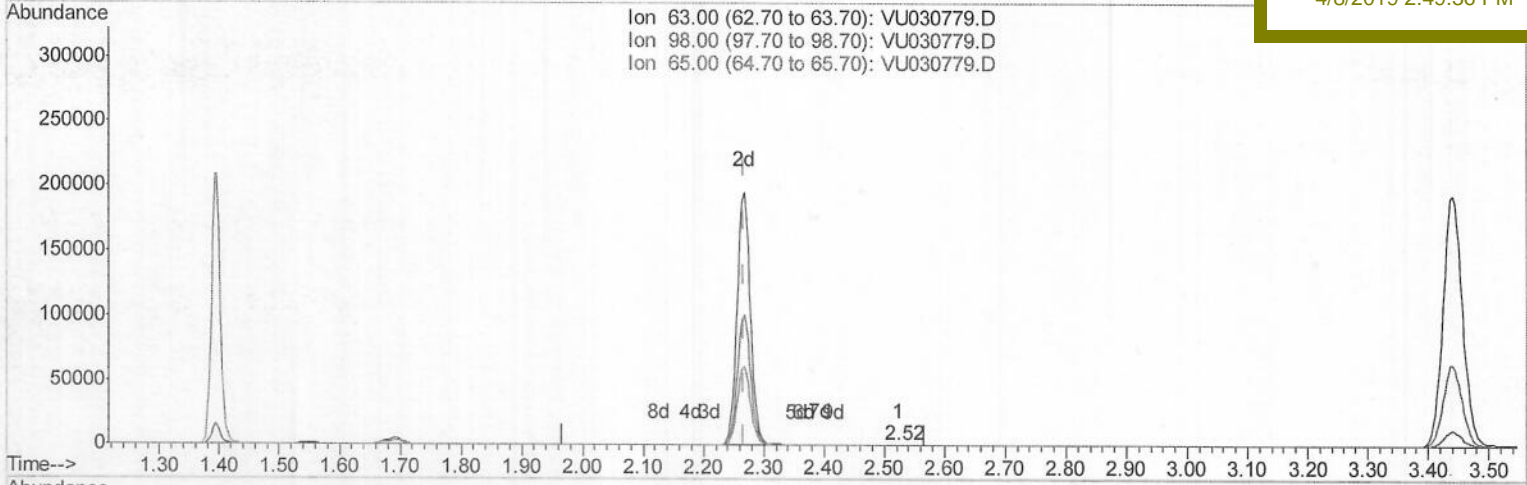
Data File : VU030779.D  
 Acq On : 06 Apr 2019 06:24  
 Operator : JC/SP  
 Sample : K2249-09DL 10X  
 Misc : 5.0mL/MSVOA\_U/WATER  
 ALS Vial : 36 Sample Multiplier: 1

Instrument :  
 MSVOA\_U  
 ClientSampled :  
 E3YE2DL

Quant Time: Apr 08 01:06:58 2019  
 Quant Method : Z:\VOASRV\HPCHEM1\MSVOA\_U\METHOD\SOMULM040519WMA.M  
 Quant Title : VOC Analysis  
 QLast Update : Mon Apr 08 01:03:28 2019  
 Response via : Initial Calibration

Manual Integrations  
 APPROVED

MMDadoda  
 4/8/2019 2:49:36 PM



TIC: VU030779.D

(11) 1,1-Dichloroethene-d2 (S)

2.524min (+0.257) 0.05ug/L

response 381

Ion	Exp%	Act%
63.00	100	100
98.00	67.20	70.60
65.00	24.00	17.59
0.00	0.00	0.00

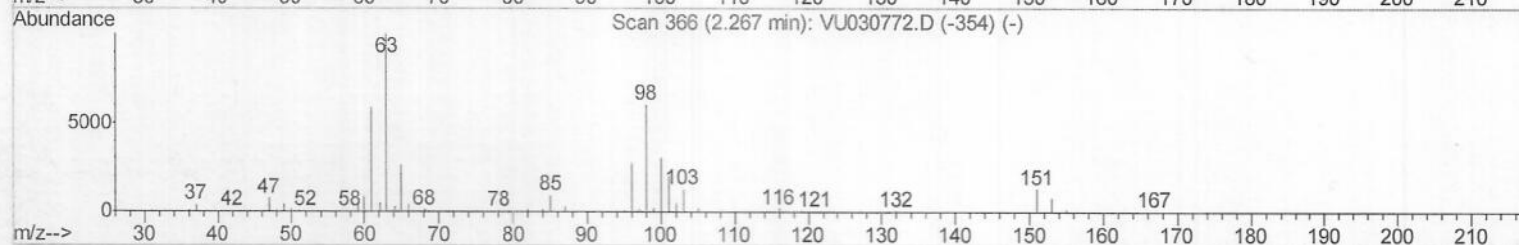
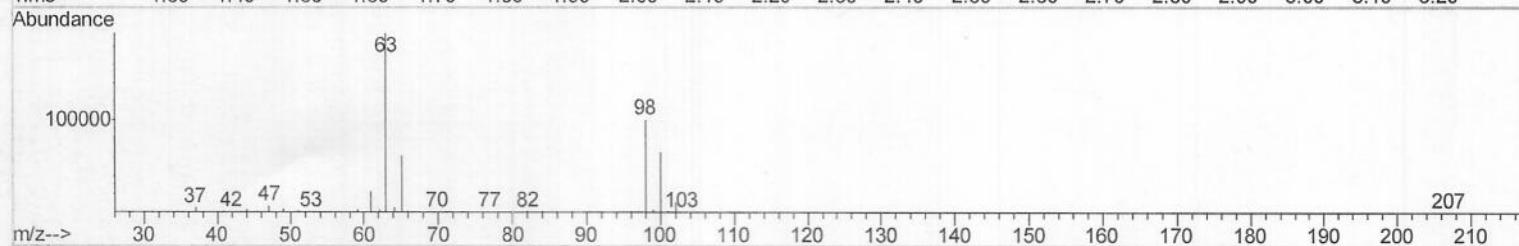
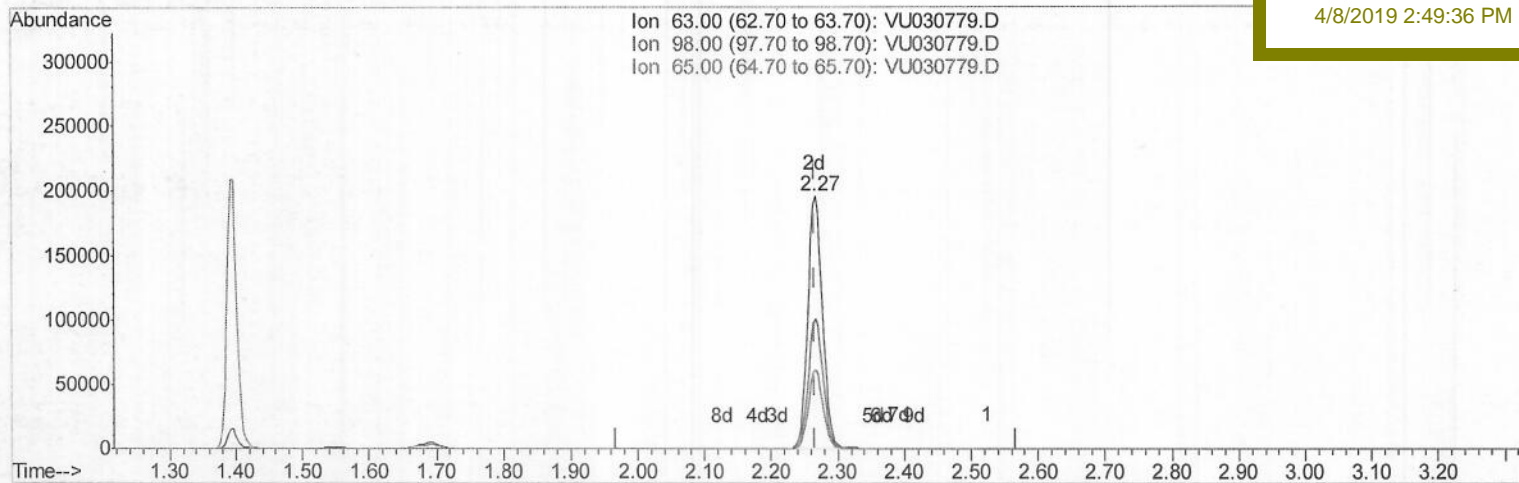
Data File : VU030779.D  
 Acq On : 06 Apr 2019 06:24  
 Operator : JC/SP  
 Sample : K2249-09DL 10X  
 Misc : 5.0mL/MSVOA\_U/WATER  
 ALS Vial : 36 Sample Multiplier: 1

Quant Time: Apr 08 01:06:58 2019  
 Quant Method : Z:\VOASRV\HPCHEM1\MSVOA\_U\METHOD\SOMULM040519WMA.M  
 Quant Title : VOC Analysis  
 QLast Update : Mon Apr 08 01:03:28 2019  
 Response via : Initial Calibration

Instrument :  
 MSVOA\_U  
 Client Sampled :  
 E3YE2DL

Manual Integrations  
 APPROVED

MMDadoda  
 4/8/2019 2:49:36 PM



TIC: VU030779.D

(11) 1,1-Dichloroethene-d2 (S)

2.267min (+0.000) 38.72ug/L m

response 298515

M.A  
 04/08/19

Ion	Exp%	Act%
63.00	100	100
98.00	67.20	0.09#
65.00	24.00	0.02#
0.00	0.00	0.00



Data File : VU030779.D  
 Acq On : 06 Apr 2019 06:24  
 Operator : JC/SP  
 Sample : K2249-09DL 10X  
 Misc : 5.0mL/MSVOA\_U/WATER  
 ALS Vial : 36 Sample Multiplier: 1

Instrument :  
 MSVOA\_U  
 Client Sampled :  
 E3YE2DL

Quant Time: Apr 08 01:51:03 2019  
 Quant Method : Z:\VOASRV\HPCHEM1\MSVOA\_U\METHOD\SOMULM040519WMA.M  
 Quant Title : VOC Analysis  
 QLast Update : Mon Apr 08 01:03:28 2019  
 Response via : Initial Calibration

Manual Integrations  
 APPROVED

MMDadoda  
 4/8/2019 2:49:36 PM

Internal Standards	R.T.	QIon	Response	Conc	Units	Dev (Min)
1) 1,4-Difluorobenzene	5.88	114	477556	50.00	ug/L	0.00
28) Chlorobenzene-d5	9.09	117	465645	50.00	ug/L	0.00
60) 1,4-Dichlorobenzene-d4	11.48	152	204654	50.00	ug/L	0.00

System Monitoring Compounds

4) Vinyl Chloride-d3	1.39	65	217955	51.13	ug/L	0.00
Spiked Amount	50.000	Range 60 - 135	Recovery =	102.26%		
7) Chloroethane-d5	1.68	69	168733	52.15	ug/L	0.00
Spiked Amount	50.000	Range 70 - 130	Recovery =	104.30%		
11) 1,1-Dichloroethene-d2	2.27	63	298515m	38.72	ug/L	0.00
Spiked Amount	50.000	Range 60 - 125	Recovery =	77.44%		
21) 2-Butanone-d5	4.17	46	353974	104.77	ug/L	0.00
Spiked Amount	100.000	Range 40 - 130	Recovery =	104.77%		
24) Chloroform-d	4.64	84	290122	44.55	ug/L	0.00
Spiked Amount	50.000	Range 70 - 125	Recovery =	89.10%		
26) 1,2-Dichloroethane-d4	5.31	65	223056	50.20	ug/L	0.00
Spiked Amount	50.000	Range 70 - 125	Recovery =	100.40%		
32) Benzene-d6	5.33	84	671007	49.36	ug/L	0.00
Spiked Amount	50.000	Range 70 - 125	Recovery =	98.72%		
36) 1,2-Dichloropropane-d6	6.32	67	232593	49.93	ug/L	0.00
Spiked Amount	50.000	Range 70 - 120	Recovery =	99.86%		
41) Toluene-d8	7.56	98	568996	47.22	ug/L	0.00
Spiked Amount	50.000	Range 80 - 120	Recovery =	94.44%		
43) trans-1,3-Dichloropropene-	7.85	79	97729	46.01	ug/L	0.00
Spiked Amount	50.000	Range 60 - 125	Recovery =	92.02%		
47) 2-Hexanone-d5	8.31	63	212303	99.71	ug/L	0.00
Spiked Amount	100.000	Range 45 - 130	Recovery =	99.71%		
57) 1,1,2,2-Tetrachloroethane-	10.43	84	303882	48.36	ug/L	0.00
Spiked Amount	50.000	Range 65 - 120	Recovery =	96.72%		
64) 1,2-Dichlorobenzene-d4	11.86	152	194316	48.28	ug/L	0.00
Spiked Amount	50.000	Range 80 - 120	Recovery =	96.56%		

M.D  
 04/08/19

Target Compounds

Target Compounds	R.T.	QIon	Response	Conc	Units	Qvalue
5) Vinyl chloride	1.40	62	15308	2.915	ug/L #	48
8) Chloroethane	1.69	64	83261	27.793	ug/L	100
19) 1,1-Dichloroethane	3.44	63	437027	60.418	ug/L	96
20) cis-1,2-Dichloroethene	4.22	96	164381	42.474	ug/L	97
30) 1,1,1-Trichloroethane	4.91	97	27447	4.837	ug/L	98
42) Toluene	7.64	91	17457	1.122	ug/L	97
46) Tetrachloroethene	8.22	164	3250	1.196	ug/L	91
52) Ethylbenzene	9.25	91	19477	1.149	ug/L	99
53) m,p-Xylene	9.37	106	14141	2.391	ug/L	99
54) o-xylene	9.77	106	11007	1.871	ug/L	90

(#) = qualifier out of range (m) = manual integration (+) = signals summed