

Data Path : Z:\voasrv\HPCHEM1\MSVOA_U\Data\VU040622\
 Data File : VU047835.D
 Acq On : 06 Apr 2022 17:58
 Operator : SY/MD
 Sample : MDL02 0.25ppb
 Misc : 25.0mL/MSVOA_U/WATER
 ALS Vial : 15 Sample Multiplier: 1

Instrument :
 MSVOA_U
 ClientSampleId :
 MDL02 0.25ppb

Quant Time: Apr 07 06:49:36 2022
 Quant Method : Z:\voasrv\HPCHEM1\MSVOA_U\Method\524U040622DW.M
 Quant Title : METHOD 524.2 VOLATILES DRINKING WATER
 QLast Update : Thu Apr 07 06:48:38 2022
 Response via : Initial Calibration

Compound	R.T.	QIon	Response	Conc	Units	Dev(Min)
Internal Standards						
1) Fluorobenzene	6.118	96	45276	1.000	ug/l	# 0.00
System Monitoring Compounds						
57) 4-Bromofluorobenzene	10.635	95	14048	0.858	ug/l	0.00
Spiked Amount	1.000		Recovery	=	86.000%	
68) 1,2-Dichlorobenzene-d4	12.195	152	19296	0.977	ug/l	0.00
Spiked Amount	1.000		Recovery	=	98.000%	
Target Compounds						
						Qvalue
2) Dichlorodifluoromethane	1.388	85	4030	0.250	ug/l	86
3) Chloromethane	1.526	50	4916	0.272	ug/l	98
4) Vinyl Chloride	1.607	62	3894	0.244	ug/l	94
5) Bromomethane	1.861	94	2566	0.254	ug/l	99
6) Chloroethane	1.938	64	2469	0.249	ug/l	98
7) Trichlorofluoromethane	2.144	101	5536	0.259	ug/l	85
8) 1,1,2-Trichloro-1,2,2-...	2.588	101	2949	0.239	ug/l	94
9) 1,1-Dichloroethene	2.584	96	3059	0.250	ug/l	91
10) Iodomethane	2.729	142	1720	0.205	ug/l	89
11) Allyl Chloride	2.925	41	4727	0.282	ug/l	98
12) Acrylonitrile	3.317	53	1225	0.398	ug/l	94
13) Acetone	2.636	43	2730	1.116	ug/l	94
14) Carbon Disulfide	2.800	76	10033	0.259	ug/l	100
15) Methylene Chloride	3.051	84	7244	0.372	ug/l	96
16) trans-1,2-Dichloroethene	3.356	96	3484	0.260	ug/l	98
17) 1,1-Dichloroethane	3.874	63	5379	0.244	ug/l	93
18) 2-Butanone	4.735	43	4077m	1.250	ug/l	
19) Cyclohexane	5.388	56	3450m	0.207	ug/l	
20) Methylcyclohexane	6.761	83	3865	0.208	ug/l	93
21) 2,2-Dichloropropane	4.668	77	4389	0.243	ug/l	91
22) cis-1,2-Dichloroethene	4.671	96	2987	0.216	ug/l	86
23) Diethyl Ether	2.382	59	2152	0.236	ug/l	# 86
24) tert-Butyl Alcohol	3.195	59	1339m	1.319	ug/l	
25) Methyl tert-Butyl Ether	3.372	73	7888	0.259	ug/l	# 81
26) Bromochloromethane	4.980	128	1658	0.241	ug/l	92
27) Chloroform	5.095	83	6052	0.259	ug/l	98
28) 1,1,1-Trichloroethane	5.321	97	4780	0.242	ug/l	96
29) 1,1-Dichloropropene	5.526	75	3786	0.226	ug/l	98
30) Carbon Tetrachloride	5.530	117	4143	0.241	ug/l	97
31) Isopropyl Ether	4.002	45	6668	0.219	ug/l	93
32) Ethyl-t-butyl ether	4.513	59	6755	0.229	ug/l	96
33) Tert-Amyl methyl ether	5.951	73	5832	0.218	ug/l	95
34) Propionitrile	4.819	54	402m	0.383	ug/l	
35) Benzene	5.780	78	11630	0.233	ug/l	95
36) 1,2-Dichloroethane	5.803	62	3548	0.241	ug/l	97
37) Trichloroethene	6.546	130	3329	0.230	ug/l	86
38) 1,2-Dichloropropane	6.796	63	3050	0.240	ug/l	# 80
39) Methacrylonitrile	4.983	41	651m	0.174	ug/l	
40) Methyl acrylate	4.870	55	1026	0.168	ug/l	# 72
41) Tetrahydrofuran	5.076	42	843	0.400	ug/l	# 84
42) 1-Chlorobutane	5.468	56	4828	0.224	ug/l	93
43) Dibromomethane	6.922	93	1818	0.249	ug/l	96
44) Bromodichloromethane	7.111	83	4335	0.257	ug/l	100

Data Path : Z:\voasrv\HPCHEM1\MSVOA_U\Data\VU040622\
 Data File : VU047835.D
 Acq On : 06 Apr 2022 17:58
 Operator : SY/MD
 Sample : MDL02 0.25ppb
 Misc : 25.0mL/MSVOA_U/WATER
 ALS Vial : 15 Sample Multiplier: 1

Instrument :
 MSVOA_U
 ClientSampleId :
 MDL02 0.25ppb

Quant Time: Apr 07 06:49:36 2022
 Quant Method : Z:\voasrv\HPCHEM1\MSVOA_U\Method\524U040622DW.M
 Quant Title : METHOD 524.2 VOLATILES DRINKING WATER
 QLast Update : Thu Apr 07 06:48:38 2022
 Response via : Initial Calibration

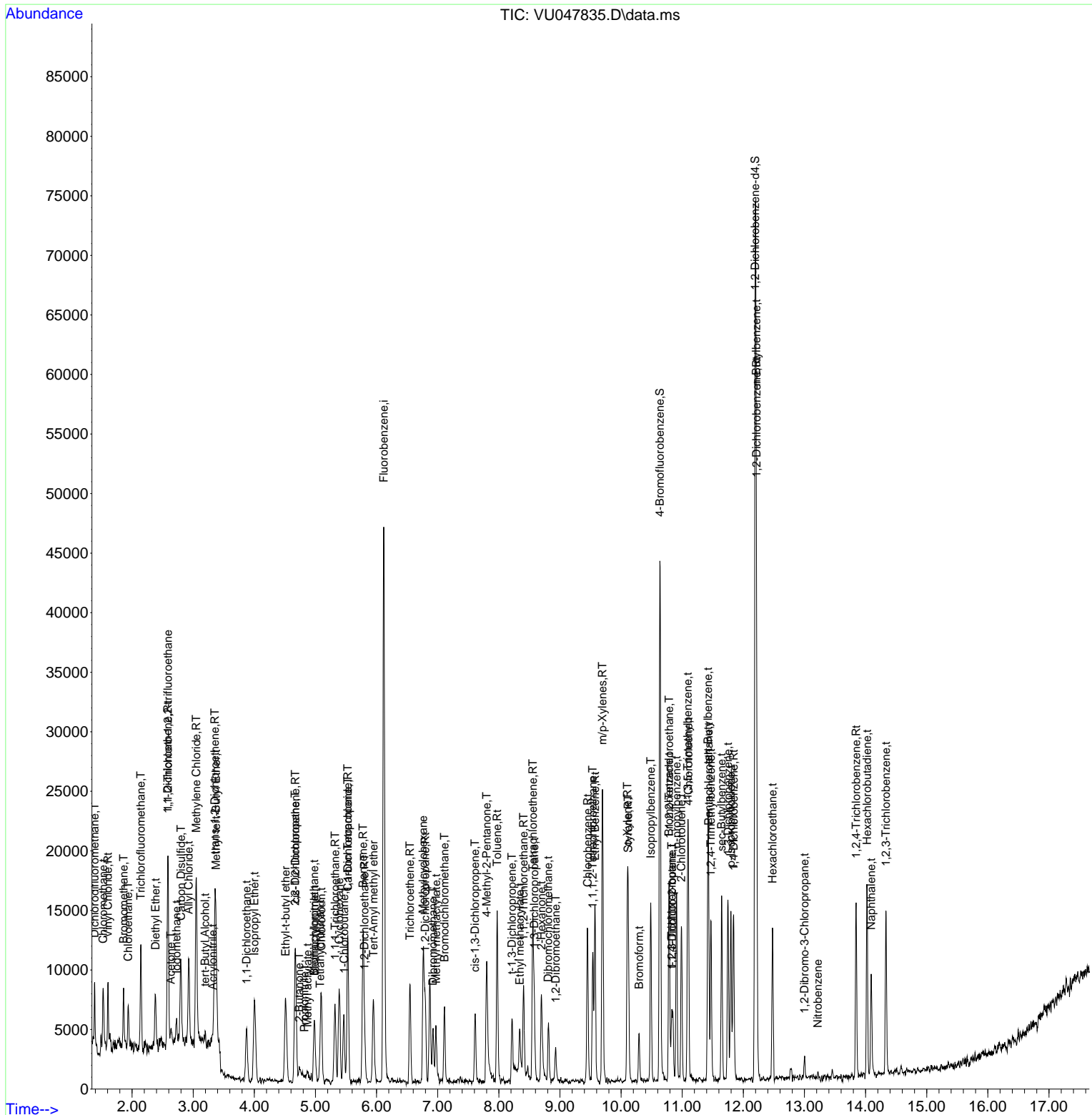
Compound	R.T.	QIon	Response	Conc	Units	Dev(Min)
45) 4-Methyl-2-Pentanone	7.803	43	8476	1.132	ug/l	92
46) t-1,4-Dichloro-2-butene	10.835	75	1992m	0.563	ug/l	
47) Methyl methacrylate	6.973	69	2283	0.390	ug/l	93
48) Ethyl methacrylate	8.343	69	2366	0.219	ug/l	84
49) Toluene	7.973	92	6416	0.211	ug/l	100
50) t-1,3-Dichloropropene	8.214	75	3382	0.227	ug/l #	81
51) cis-1,3-Dichloropropene	7.610	75	3768	0.220	ug/l	95
52) 1,1,2-Trichloroethane	8.404	97	2450	0.238	ug/l	95
53) 1,3-Dichloropropane	8.581	76	4142	0.245	ug/l	98
54) 2-Hexanone	8.697	43	6547	1.216	ug/l	88
55) Dibromochloromethane	8.809	129	2930	0.238	ug/l	98
56) 1,2-Dibromoethane	8.931	107	2515	0.255	ug/l	94
58) Tetrachloroethene	8.555	164	3177	0.244	ug/l	88
59) Chlorobenzene	9.452	112	8035	0.224	ug/l	98
60) 1,1,1,2-Tetrachloroethane	9.536	131	3088	0.243	ug/l	97
61) Pentachloroethane	11.433	117	2465	0.233	ug/l	94
62) Hexachloroethane	12.478	117	2058	0.213	ug/l #	3
63) Ethyl Benzene	9.574	91	10774	0.195	ug/l	99
64) m/p-Xylenes	9.697	106	7238	0.329	ug/l	96
65) o-Xylene	10.102	106	3701	0.176	ug/l	100
66) Styrene	10.118	104	6099	0.172	ug/l	98
67) Bromoform	10.295	173	1920	0.246	ug/l #	95
69) Isopropylbenzene	10.484	105	9845	0.179	ug/l	99
70) 1,1,2,2-Tetrachloroethane	10.787	83	3375	0.253	ug/l #	96
71) 1,2,3-Trichloropropane	10.828	75	2509m	0.248	ug/l	
72) Bromobenzene	10.783	156	3296	0.200	ug/l	89
73) n-propylbenzene	10.909	120	2771	0.177	ug/l	100
74) 2-Chlorotoluene	10.986	126	2750	0.185	ug/l	97
75) 1,3,5-Trimethylbenzene	11.089	105	7744	0.166	ug/l	97
76) 4-Chlorotoluene	11.102	126	2903	0.185	ug/l	90
77) tert-Butylbenzene	11.423	119	8494	0.180	ug/l	94
78) 1,2,4-Trimethylbenzene	11.468	105	7720	0.161	ug/l	97
79) sec-Butylbenzene	11.645	105	9771	0.158	ug/l	96
80) Nitrobenzene	13.217	77	300	0.595	ug/l #	46
81) p-Isopropyltoluene	11.796	119	8299	0.160	ug/l	99
82) 1,3-Dichlorobenzene	11.748	146	7327	0.221	ug/l	95
83) 1,4-Dichlorobenzene	11.841	146	6984	0.211	ug/l	99
84) n-Butylbenzene	12.211	91	8777	0.178	ug/l	94
85) 1,2-Dichlorobenzene	12.214	146	7373	0.235	ug/l	97
86) 1,2-Dibromo-3-Chloropr...	12.999	75	449	0.212	ug/l	89
87) 1,2,4-Trichlorobenzene	13.844	180	5651	0.247	ug/l	96
88) Hexachlorobutadiene	14.024	225	3361	0.248	ug/l	95
89) Naphthalene	14.092	128	8240	0.221	ug/l	100
90) 1,2,3-Trichlorobenzene	14.333	180	4934	0.233	ug/l	98

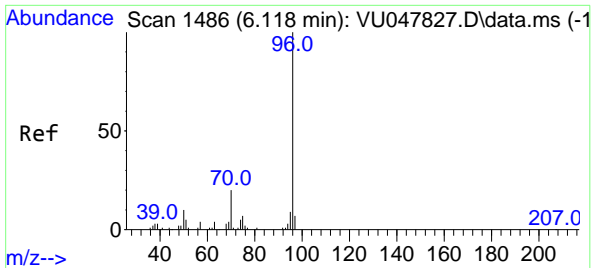
(#) = qualifier out of range (m) = manual integration (+) = signals summed

Data Path : Z:\voasrv\HPCHEM1\MSVOA_U\Data\VU040622\
 Data File : VU047835.D
 Acq On : 06 Apr 2022 17:58
 Operator : SY/MD
 Sample : MDL02 0.25ppb
 Misc : 25.0mL/MSVOA_U/WATER
 ALS Vial : 15 Sample Multiplier: 1

Instrument :
 MSVOA_U
ClientSampleId :
 MDL02 0.25ppb

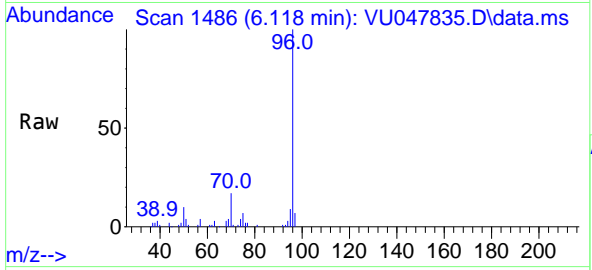
Quant Time: Apr 07 06:49:36 2022
 Quant Method : Z:\voasrv\HPCHEM1\MSVOA_U\Method\524U040622DW.M
 Quant Title : METHOD 524.2 VOLATILES DRINKING WATER
 QLast Update : Thu Apr 07 06:48:38 2022
 Response via : Initial Calibration





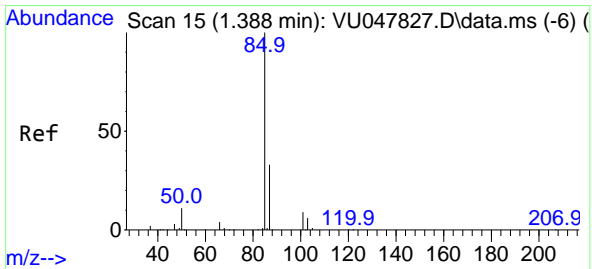
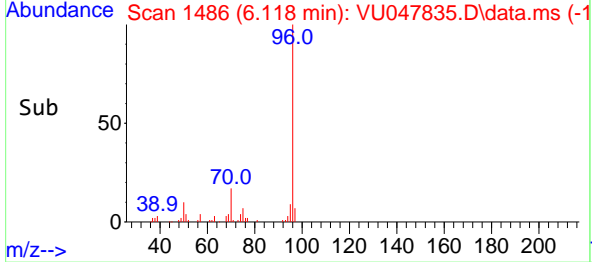
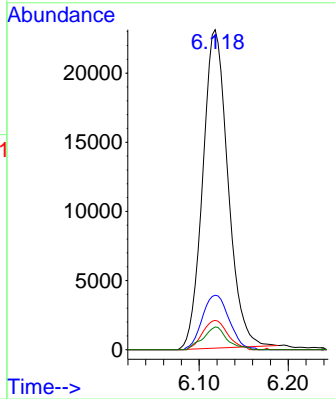
#1
 Fluorobenzene
 Concen: 1.000 ug/l
 RT: 6.118 min Scan# 14
 Delta R.T. -0.000 min
 Lab File: VU047835.D
 Acq: 06 Apr 2022 17:58

Instrument : MSVOA_U
 ClientSampleId : MDL02 0.25ppb

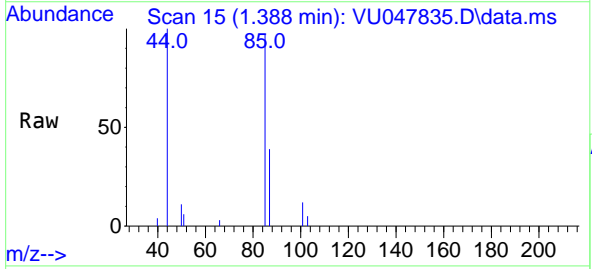


Tgt Ion: 96 Resp: 45276

Ion	Ratio	Lower	Upper
96	100		
70	18.3	15.4	23.0
95	9.2	7.6	11.4
97	6.8	0.0	0.0

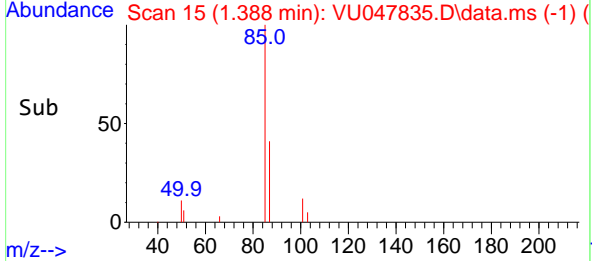
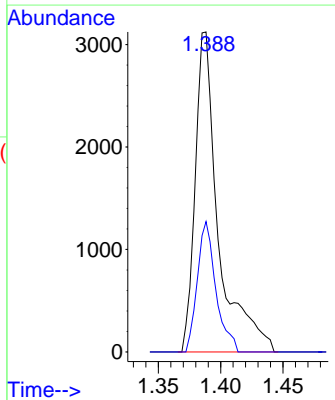


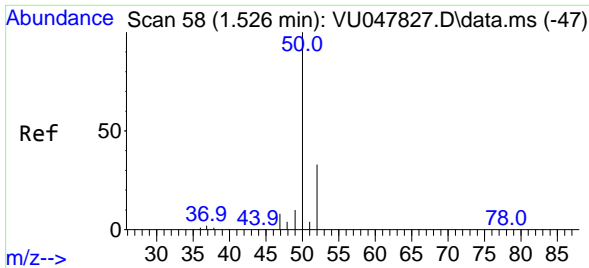
#2
 Dichlorodifluoromethane
 Concen: 0.250 ug/l
 RT: 1.388 min Scan# 15
 Delta R.T. 0.000 min
 Lab File: VU047835.D
 Acq: 06 Apr 2022 17:58



Tgt Ion: 85 Resp: 4030

Ion	Ratio	Lower	Upper
85	100		
87	40.8	16.4	49.4

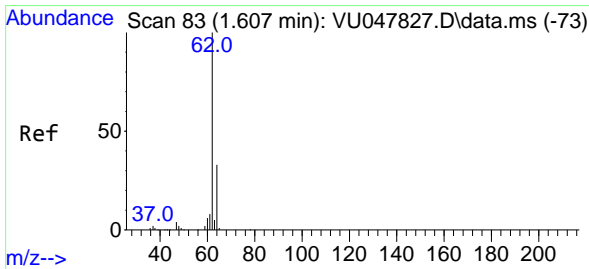
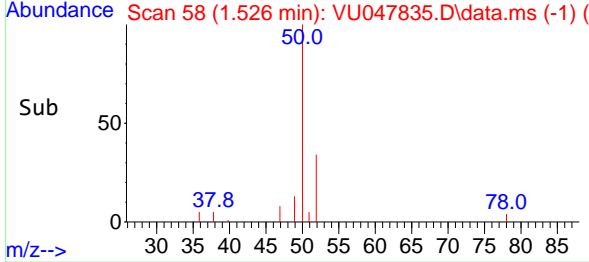
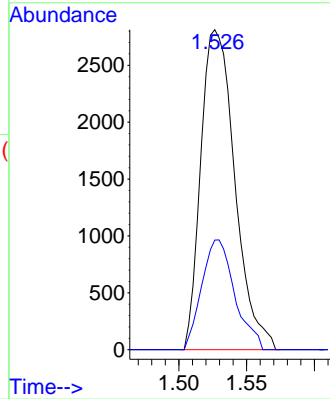
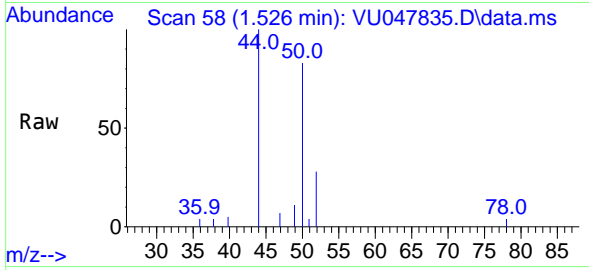




#3
 Chloromethane
 Concen: 0.272 ug/l
 RT: 1.526 min Scan# 58
 Delta R.T. 0.000 min
 Lab File: VU047835.D
 Acq: 06 Apr 2022 17:58

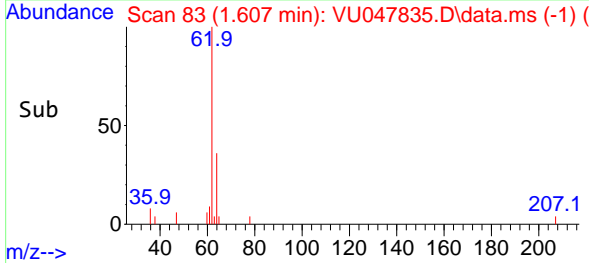
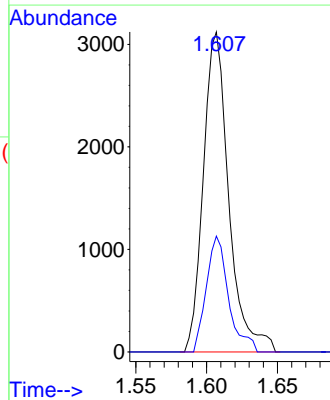
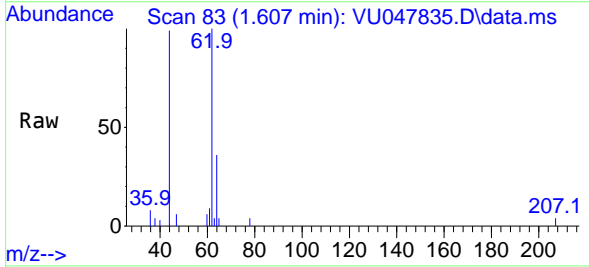
Instrument : MSVOA_U
 ClientSampleId : MDL02 0.25ppb

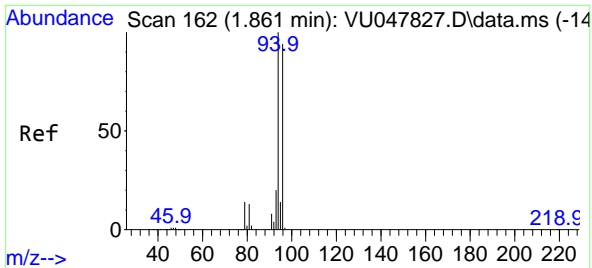
Tgt Ion: 50 Resp: 4916
 Ion Ratio Lower Upper
 50 100
 52 34.3 26.7 40.1



#4
 Vinyl Chloride
 Concen: 0.244 ug/l
 RT: 1.607 min Scan# 83
 Delta R.T. 0.000 min
 Lab File: VU047835.D
 Acq: 06 Apr 2022 17:58

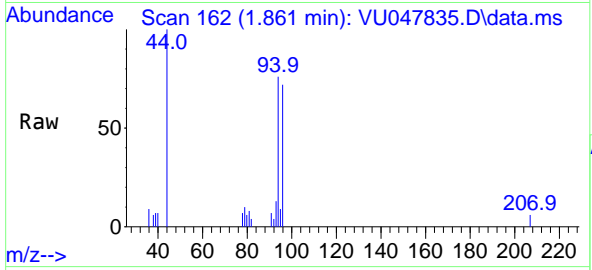
Tgt Ion: 62 Resp: 3894
 Ion Ratio Lower Upper
 62 100
 64 36.2 26.4 39.6



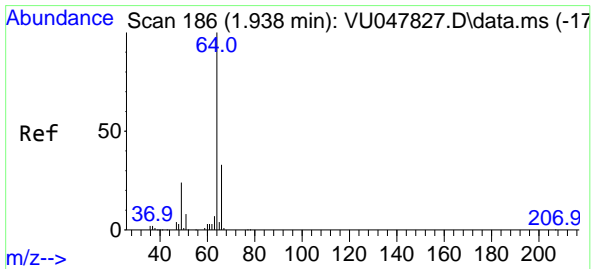
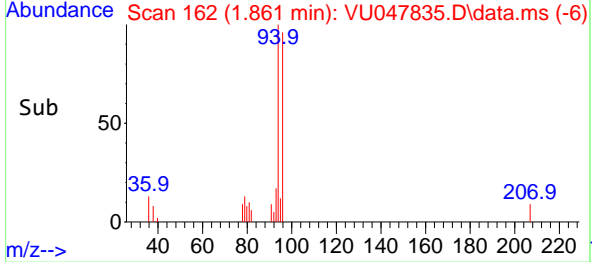
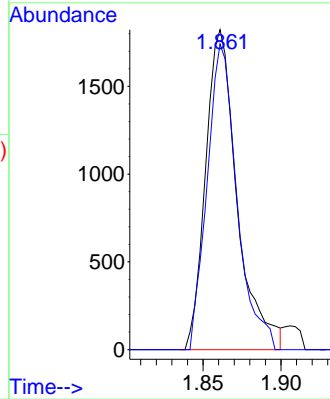


#5
 Bromomethane
 Concen: 0.254 ug/l
 RT: 1.861 min Scan# 162
 Delta R.T. 0.000 min
 Lab File: VU047835.D
 Acq: 06 Apr 2022 17:58

Instrument : MSVOA_U
 ClientSampleId : VU047835.D
 MDL02 0.25ppb

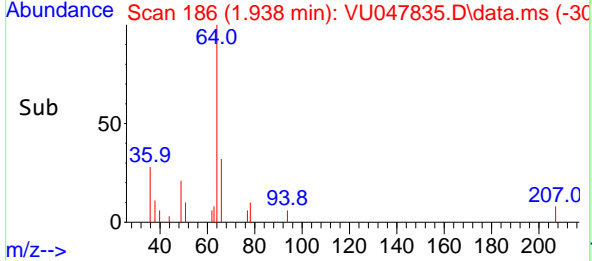
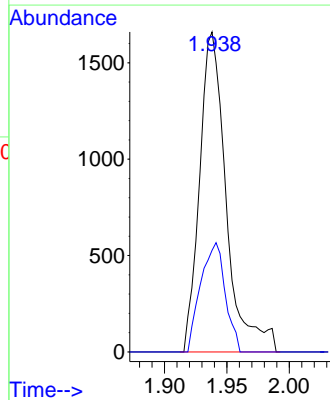
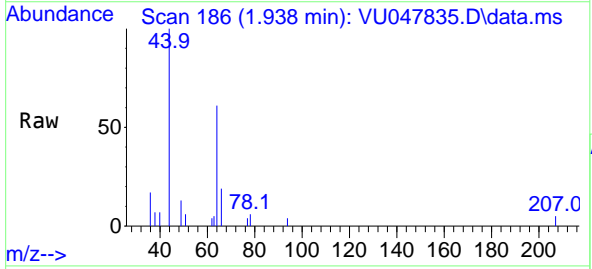


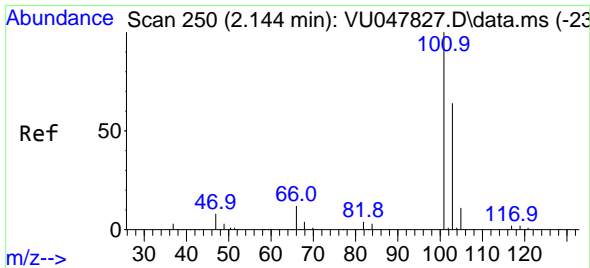
Tgt Ion: 94 Resp: 2566
 Ion Ratio Lower Upper
 94 100
 96 95.5 75.3 112.9



#6
 Chloroethane
 Concen: 0.249 ug/l
 RT: 1.938 min Scan# 186
 Delta R.T. 0.000 min
 Lab File: VU047835.D
 Acq: 06 Apr 2022 17:58

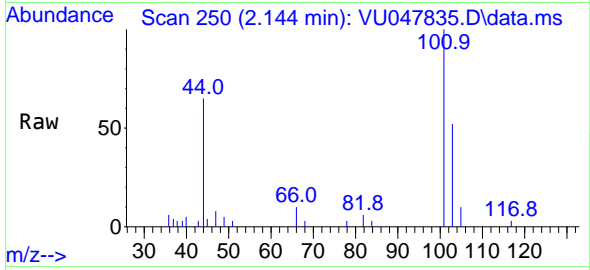
Tgt Ion: 64 Resp: 2469
 Ion Ratio Lower Upper
 64 100
 66 31.7 26.2 39.2



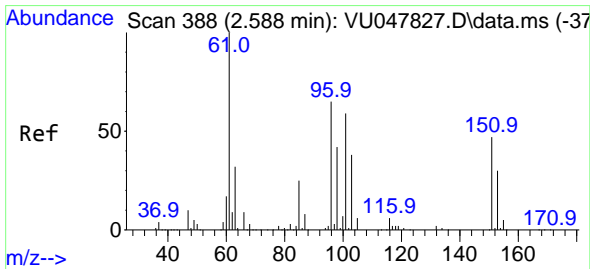
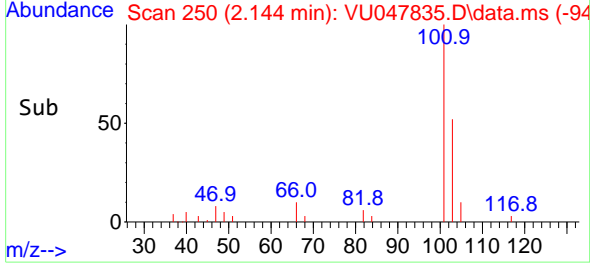
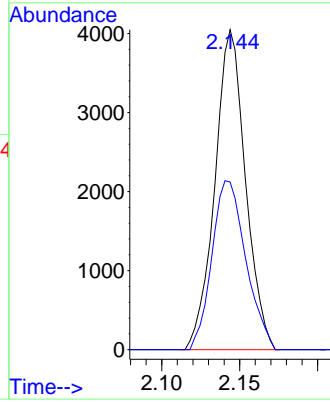


#7
 Trichlorofluoromethane
 Concen: 0.259 ug/l
 RT: 2.144 min Scan# 21
 Delta R.T. 0.000 min
 Lab File: VU047835.D
 Acq: 06 Apr 2022 17:58

Instrument : MSVOA_U
 ClientSampleId : MDL02 0.25ppb

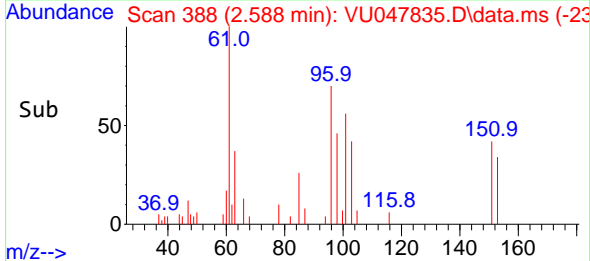
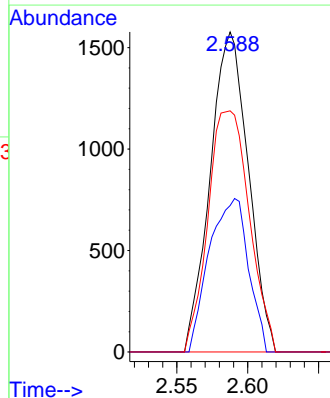
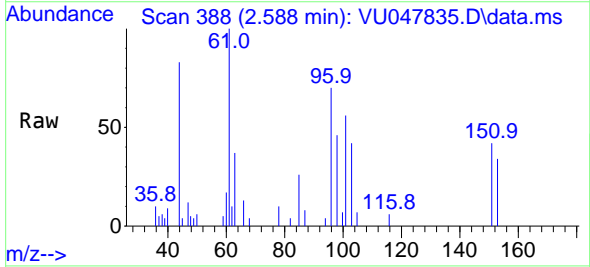


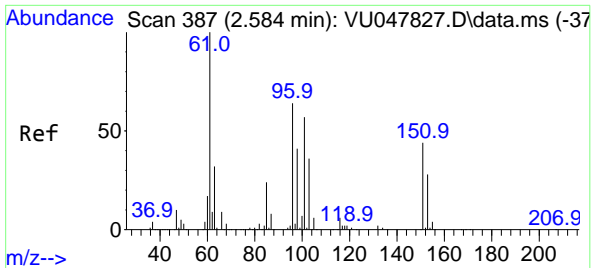
Tgt Ion:101 Resp: 5536
 Ion Ratio Lower Upper
 101 100
 103 52.4 51.3 76.9



#8
 1,1,2-Trichloro-1,2,2-trifluoroethane
 Concen: 0.239 ug/l
 RT: 2.588 min Scan# 388
 Delta R.T. 0.000 min
 Lab File: VU047835.D
 Acq: 06 Apr 2022 17:58

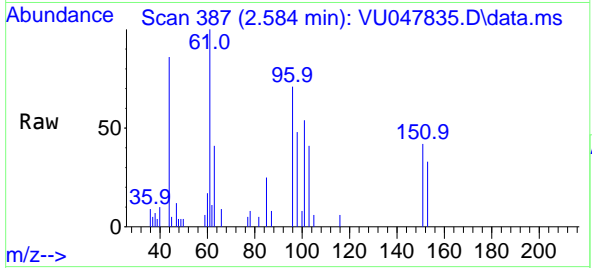
Tgt Ion:101 Resp: 2949
 Ion Ratio Lower Upper
 101 100
 85 49.4 33.4 50.2
 151 81.9 63.8 95.8



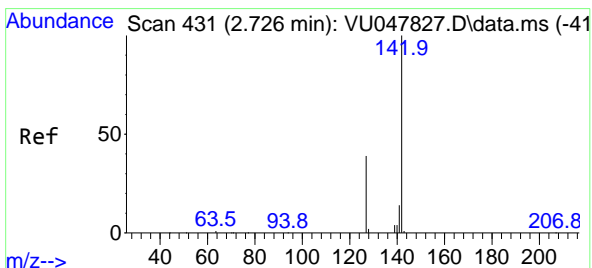
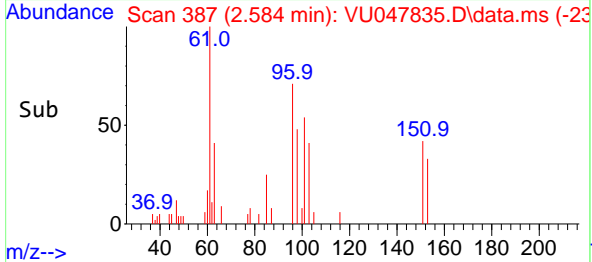
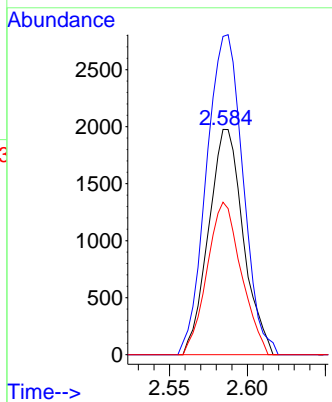


#9
 1,1-Dichloroethene
 Concen: 0.250 ug/l
 RT: 2.584 min Scan# 387
 Delta R.T. 0.000 min
 Lab File: VU047835.D
 Acq: 06 Apr 2022 17:58

Instrument : MSVOA_U
 ClientSampleId : MDL02 0.25ppb

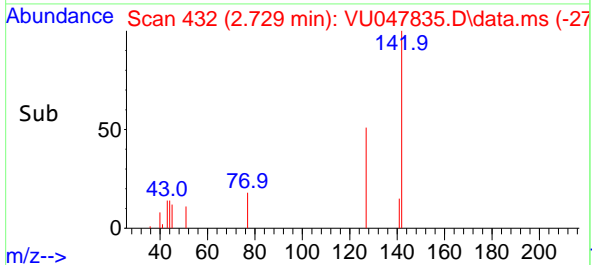
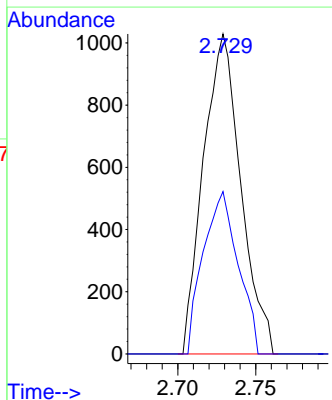
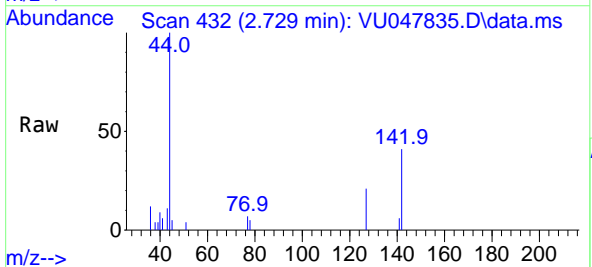


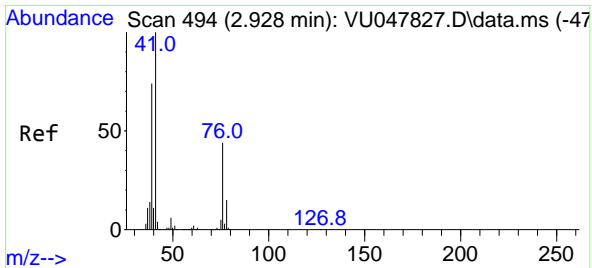
Tgt Ion: 96 Resp: 3059
 Ion Ratio Lower Upper
 96 100
 61 141.2 0.0 466.5
 98 67.7 0.0 128.0



#10
 Iodomethane
 Concen: 0.205 ug/l
 RT: 2.729 min Scan# 432
 Delta R.T. 0.003 min
 Lab File: VU047835.D
 Acq: 06 Apr 2022 17:58

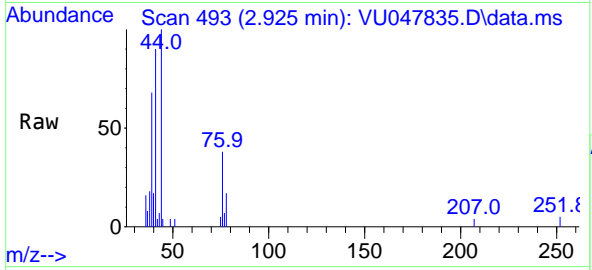
Tgt Ion: 142 Resp: 1720
 Ion Ratio Lower Upper
 142 100
 127 47.2 32.1 48.1



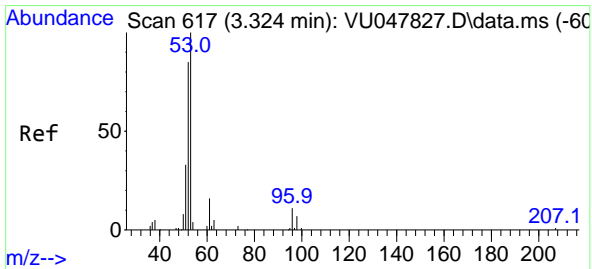
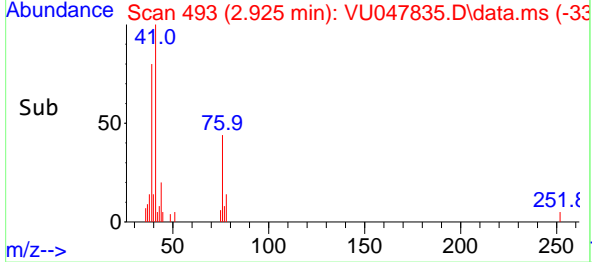
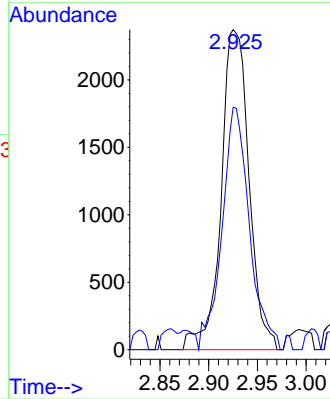


#11
 Allyl Chloride
 Concen: 0.282 ug/l
 RT: 2.925 min Scan# 493
 Delta R.T. -0.003 min
 Lab File: VU047835.D
 Acq: 06 Apr 2022 17:58

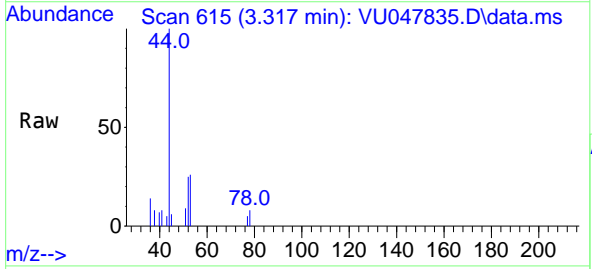
Instrument : MSVOA_U
 ClientSampleId : MDL02 0.25ppb



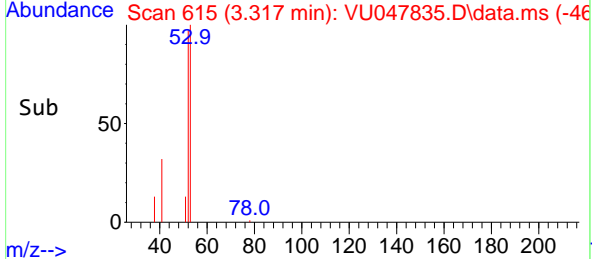
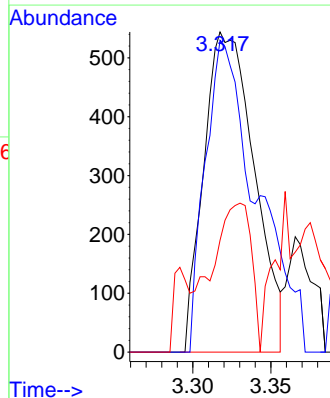
Tgt Ion: 41 Resp: 4727
 Ion Ratio Lower Upper
 41 100
 39 74.4 58.3 87.5

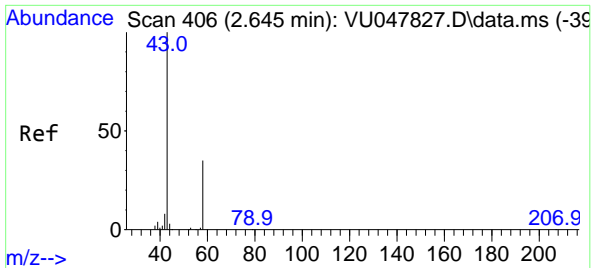


#12
 Acrylonitrile
 Concen: 0.398 ug/l
 RT: 3.317 min Scan# 615
 Delta R.T. -0.006 min
 Lab File: VU047835.D
 Acq: 06 Apr 2022 17:58



Tgt Ion: 53 Resp: 1225
 Ion Ratio Lower Upper
 53 100
 52 75.2 65.5 98.3
 51 35.4 29.6 44.4

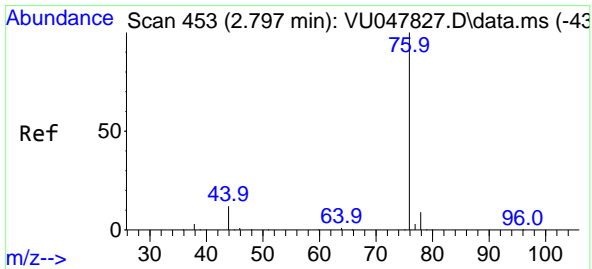
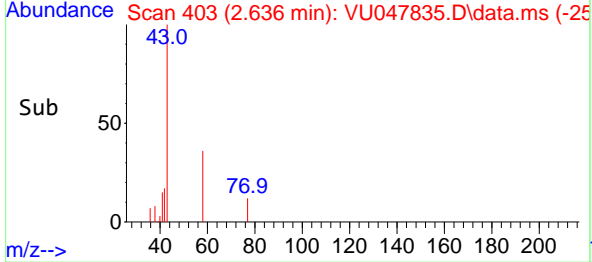
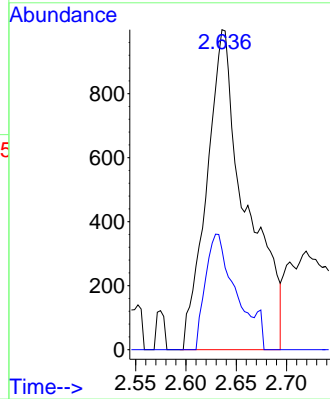
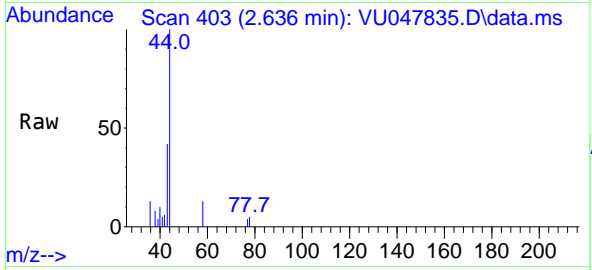




#13
 Acetone
 Concen: 1.116 ug/l
 RT: 2.636 min Scan# 403
 Delta R.T. -0.010 min
 Lab File: VU047835.D
 Acq: 06 Apr 2022 17:58

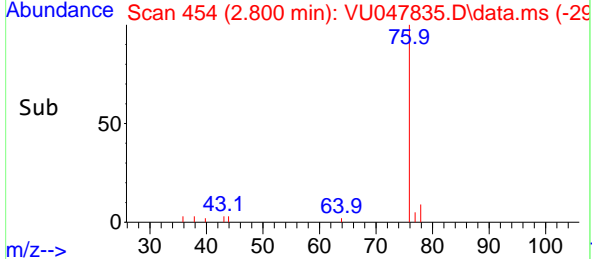
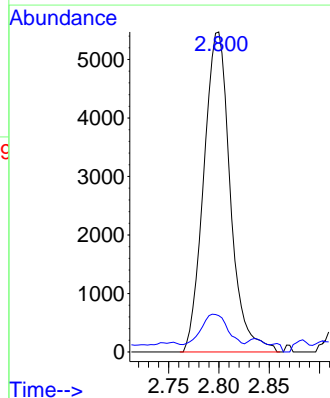
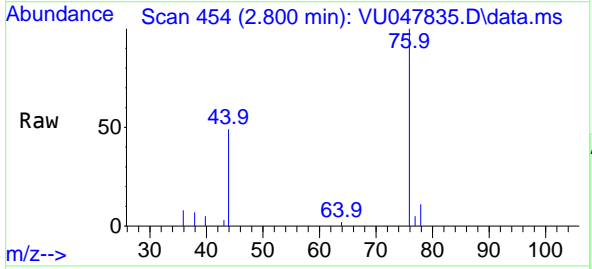
Instrument : MSVOA_U
 ClientSampleId : MDL02 0.25ppb

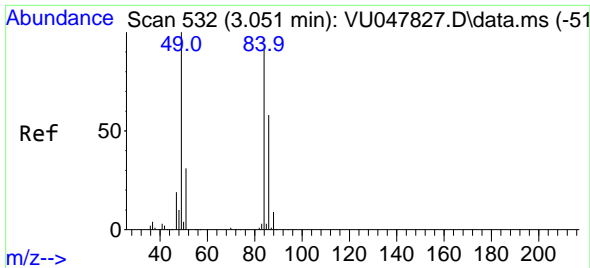
Tgt Ion: 43 Resp: 2730
 Ion Ratio Lower Upper
 43 100
 58 31.3 28.0 42.0



#14
 Carbon Disulfide
 Concen: 0.259 ug/l
 RT: 2.800 min Scan# 454
 Delta R.T. 0.003 min
 Lab File: VU047835.D
 Acq: 06 Apr 2022 17:58

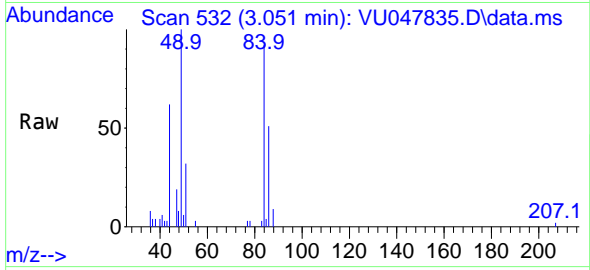
Tgt Ion: 76 Resp: 10033
 Ion Ratio Lower Upper
 76 100
 78 9.1 7.2 10.8





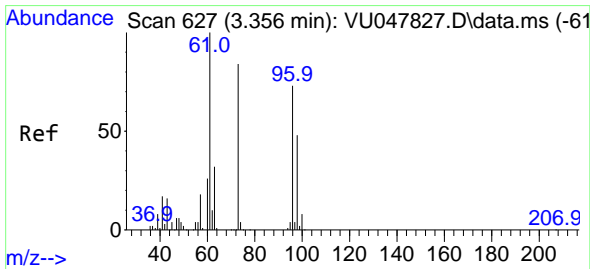
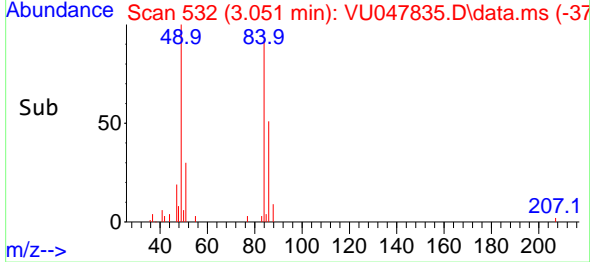
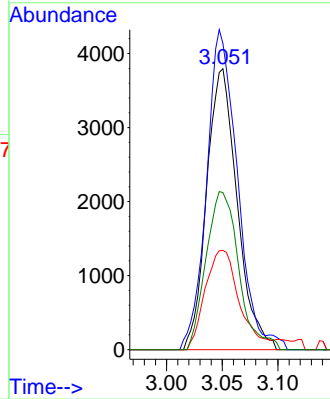
#15
 Methylene Chloride
 Concen: 0.372 ug/l
 RT: 3.051 min Scan# 51
 Delta R.T. -0.000 min
 Lab File: VU047835.D
 Acq: 06 Apr 2022 17:58

Instrument : MSVOA_U
 ClientSampleId : MDL02 0.25ppb

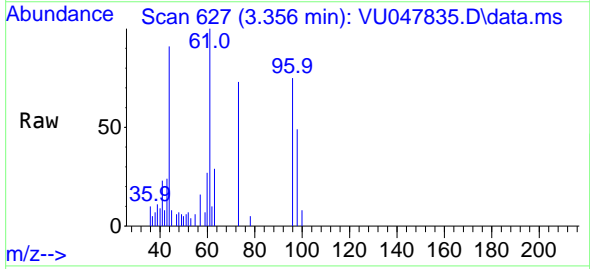


Tgt Ion: 84 Resp: 7244

Ion	Ratio	Lower	Upper
84	100		
49	109.0	88.4	132.6
51	35.3	0.0	69.8
86	55.9	51.2	76.8

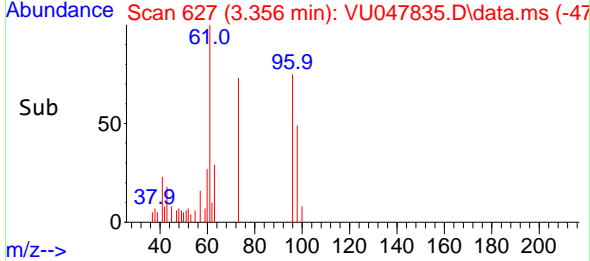
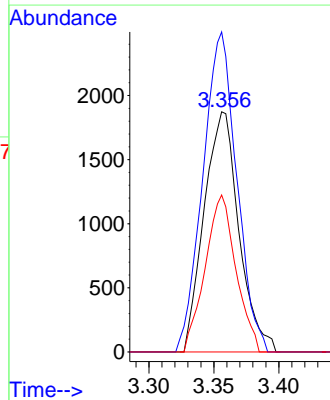


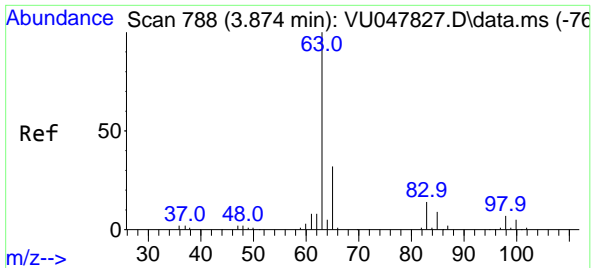
#16
 trans-1,2-Dichloroethene
 Concen: 0.260 ug/l
 RT: 3.356 min Scan# 627
 Delta R.T. 0.000 min
 Lab File: VU047835.D
 Acq: 06 Apr 2022 17:58



Tgt Ion: 96 Resp: 3484

Ion	Ratio	Lower	Upper
96	100		
61	133.3	109.2	163.8
98	65.3	52.0	78.0



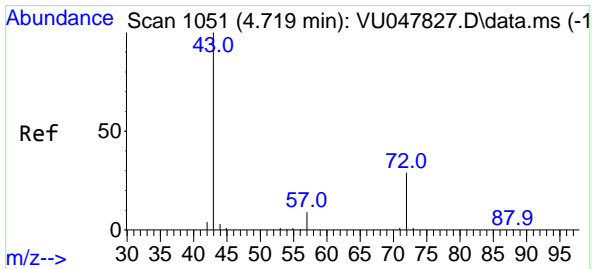
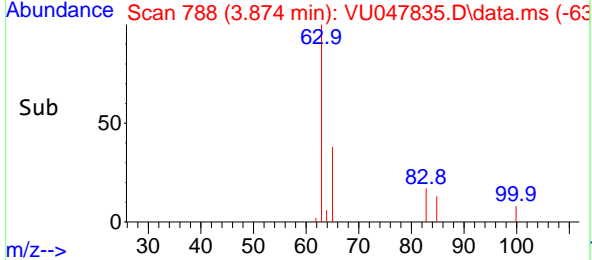
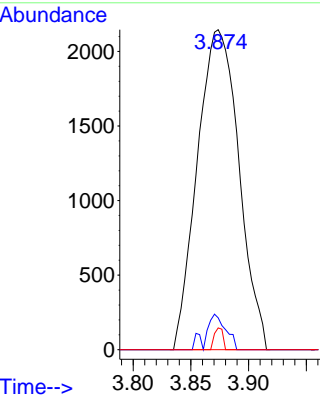
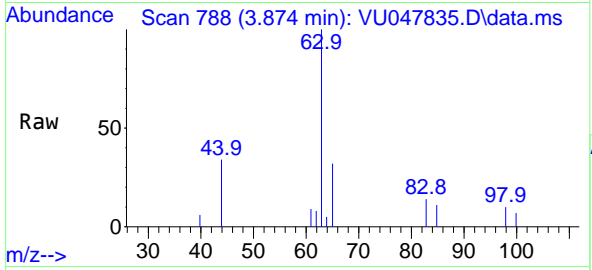


#17
 1,1-Dichloroethane
 Concen: 0.244 ug/l
 RT: 3.874 min Scan# 788
 Delta R.T. 0.000 min
 Lab File: VU047835.D
 Acq: 06 Apr 2022 17:58

Instrument : MSVOA_U
 ClientSampleId : MDL02 0.25ppb

Tgt Ion: 63 Resp: 5379

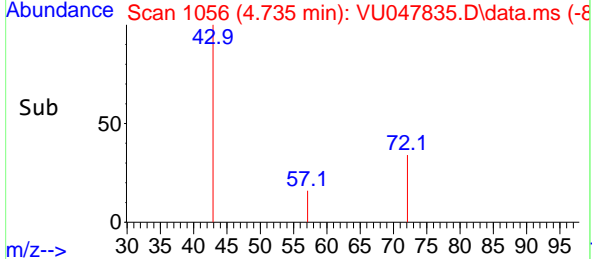
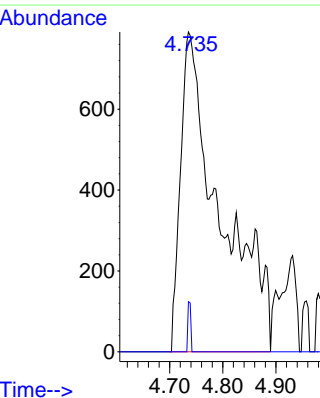
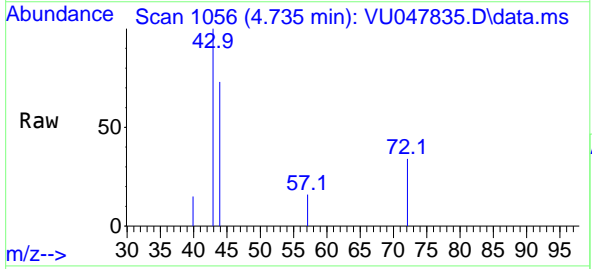
Ion	Ratio	Lower	Upper
63	100		
98	10.0	3.6	10.8
100	6.8	2.4	7.2

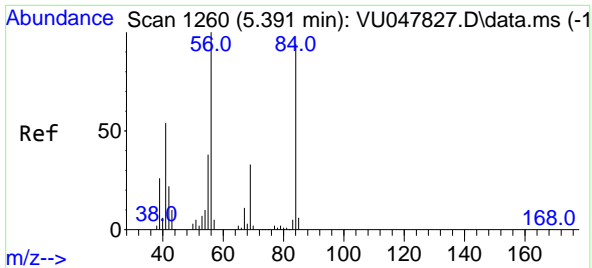


#18
 2-Butanone
 Concen: 1.250 ug/l m
 RT: 4.735 min Scan# 1056
 Delta R.T. 0.016 min
 Lab File: VU047835.D
 Acq: 06 Apr 2022 17:58

Tgt Ion: 43 Resp: 4077

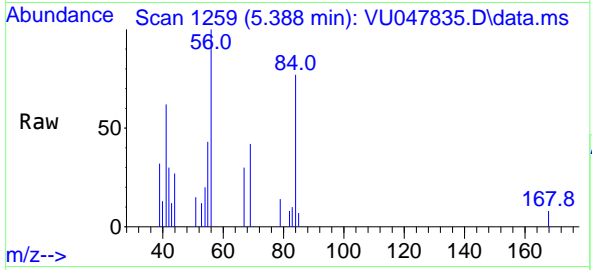
Ion	Ratio	Lower	Upper
43	100		
57	15.7	0.0	17.4





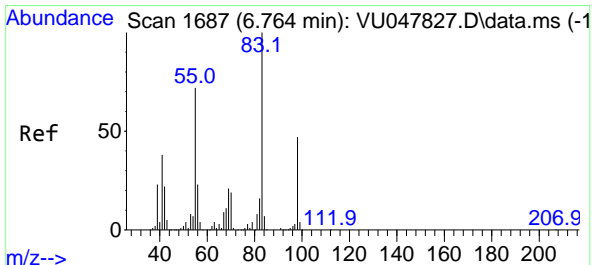
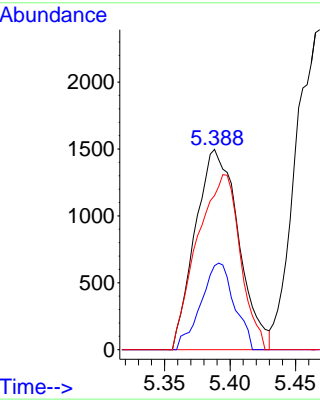
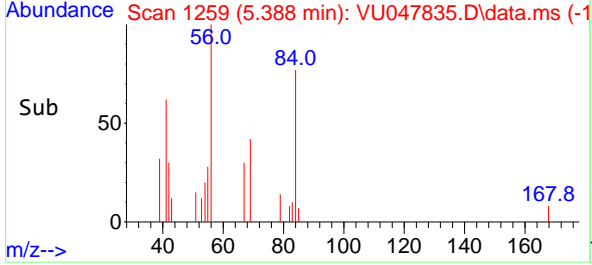
#19
 Cyclohexane
 Concen: 0.207 ug/l m
 RT: 5.388 min Scan# 11
 Delta R.T. -0.003 min
 Lab File: VU047835.D
 Acq: 06 Apr 2022 17:58

Instrument : MSVOA_U
 ClientSampleId : MDL02 0.25ppb

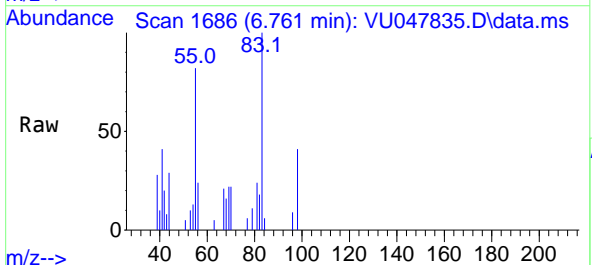


Tgt Ion: 56 Resp: 3450

Ion	Ratio	Lower	Upper
56	100		
69	33.2	25.4	38.0
84	86.1	74.0	111.0

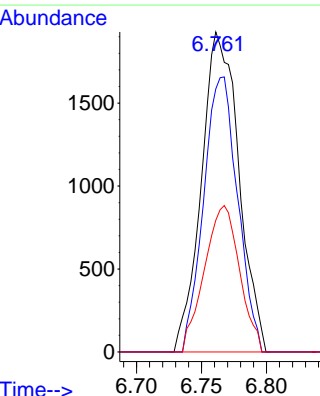
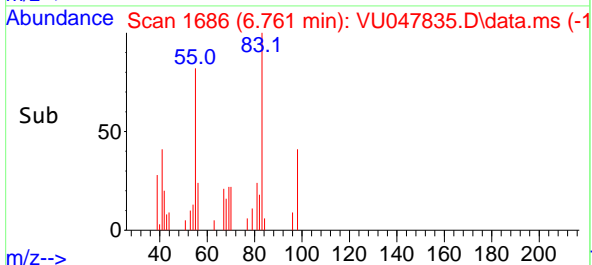


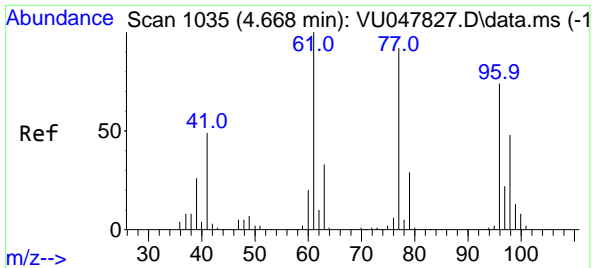
#20
 Methylcyclohexane
 Concen: 0.208 ug/l
 RT: 6.761 min Scan# 1686
 Delta R.T. -0.003 min
 Lab File: VU047835.D
 Acq: 06 Apr 2022 17:58



Tgt Ion: 83 Resp: 3865

Ion	Ratio	Lower	Upper
83	100		
55	78.0	58.0	87.0
98	43.0	37.9	56.9

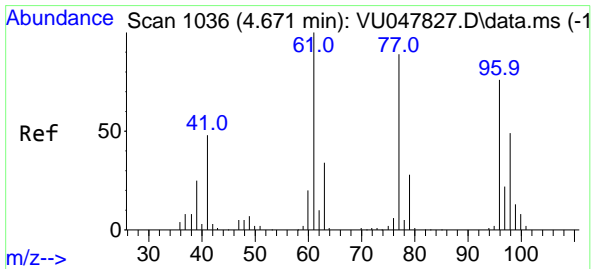
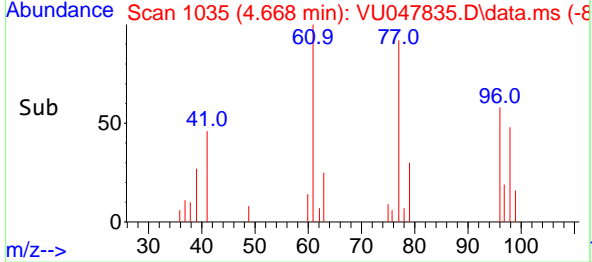
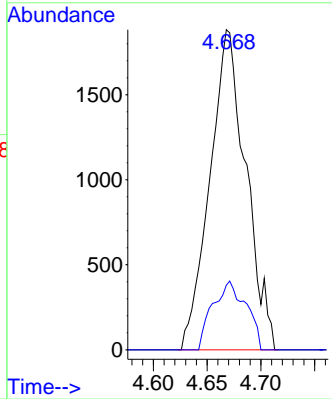
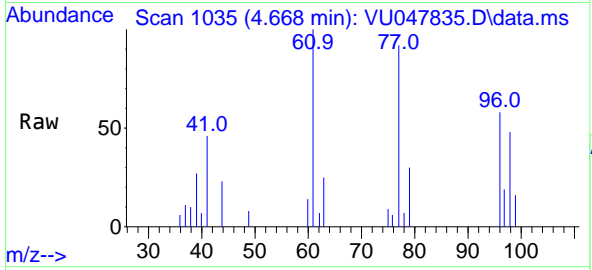




#21
 2,2-Dichloropropane
 Concen: 0.243 ug/l
 RT: 4.668 min Scan# 1035
 Delta R.T. 0.000 min
 Lab File: VU047835.D
 Acq: 06 Apr 2022 17:58

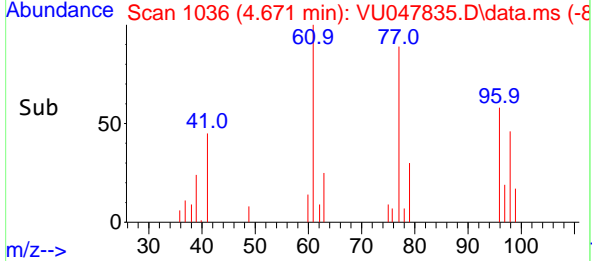
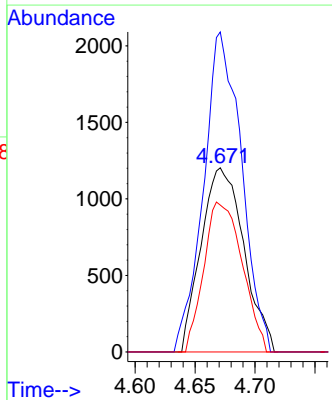
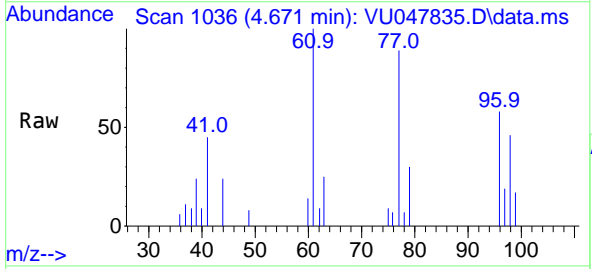
Instrument : MSVOA_U
 ClientSampleId : MDL02 0.25ppb

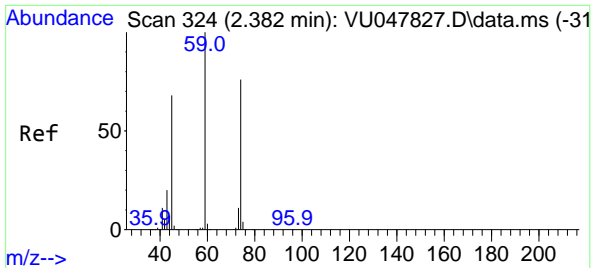
Tgt Ion: 77 Resp: 4389
 Ion Ratio Lower Upper
 77 100
 97 19.8 19.3 28.9



#22
 cis-1,2-Dichloroethene
 Concen: 0.216 ug/l
 RT: 4.671 min Scan# 1036
 Delta R.T. 0.000 min
 Lab File: VU047835.D
 Acq: 06 Apr 2022 17:58

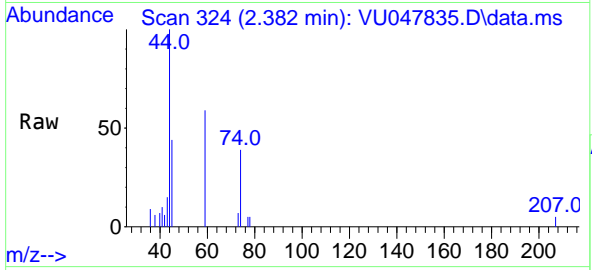
Tgt Ion: 96 Resp: 2987
 Ion Ratio Lower Upper
 96 100
 61 153.9 0.0 337.8
 98 72.9 32.5 97.5



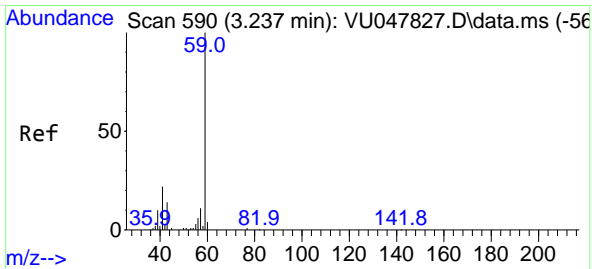
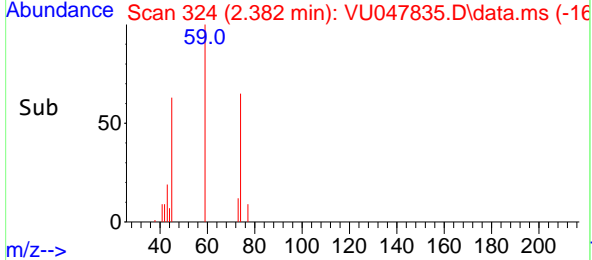
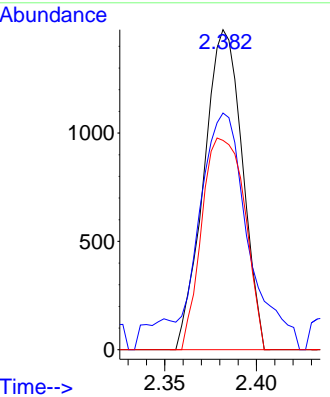


#23
 Diethyl Ether
 Concen: 0.236 ug/l
 RT: 2.382 min Scan# 311
 Delta R.T. 0.000 min
 Lab File: VU047835.D
 Acq: 06 Apr 2022 17:58

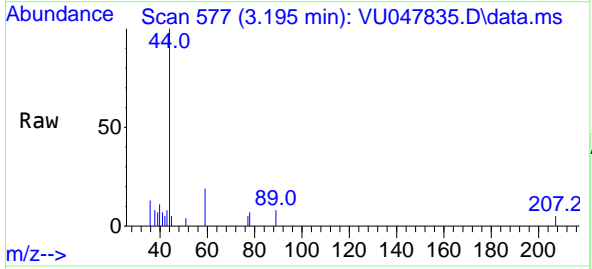
Instrument : MSVOA_U
 ClientSampleId : MDL02 0.25ppb



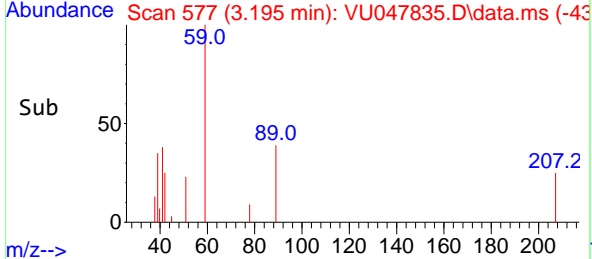
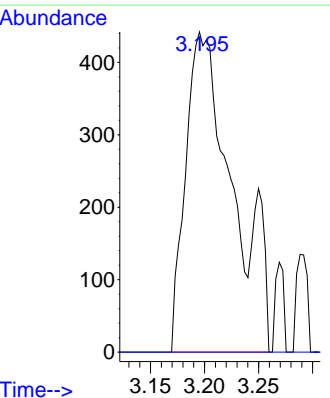
Tgt Ion: 59 Resp: 2152
 Ion Ratio Lower Upper
 59 100
 45 92.4 55.8 83.6#
 74 74.0 60.6 91.0

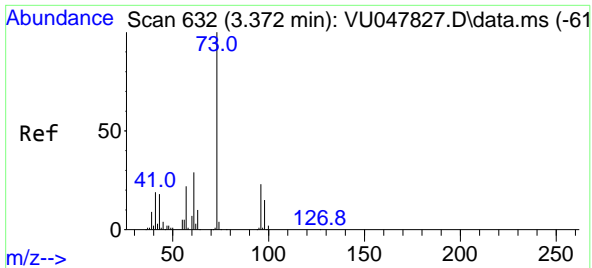


#24
 tert-Butyl Alcohol
 Concen: 1.319 ug/l m
 RT: 3.195 min Scan# 577
 Delta R.T. -0.042 min
 Lab File: VU047835.D
 Acq: 06 Apr 2022 17:58



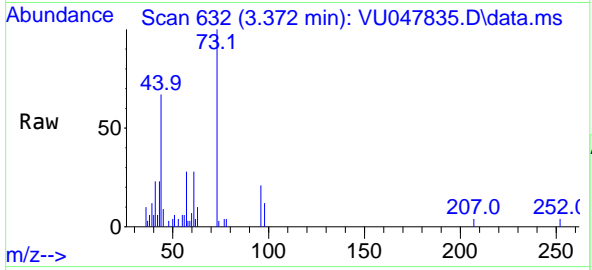
Tgt Ion: 59 Resp: 1339
 Ion Ratio Lower Upper
 59 100
 57 0.0 8.4 12.6#



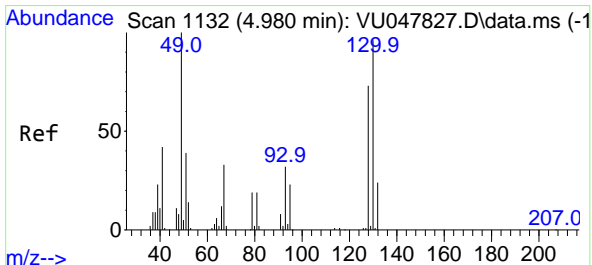
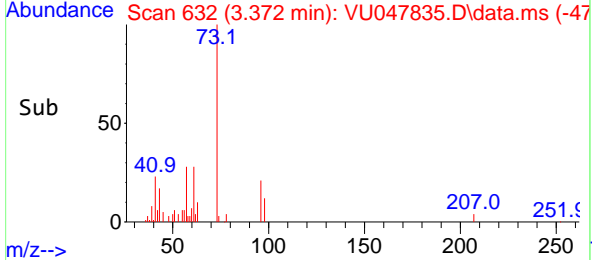
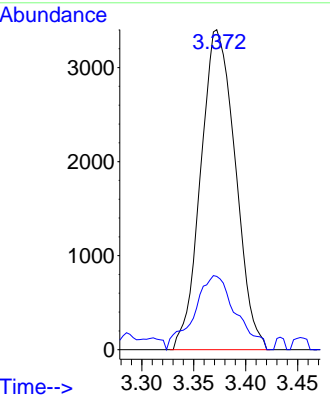


#25
 Methyl tert-Butyl Ether
 Concen: 0.259 ug/l
 RT: 3.372 min Scan# 61
 Delta R.T. 0.000 min
 Lab File: VU047835.D
 Acq: 06 Apr 2022 17:58

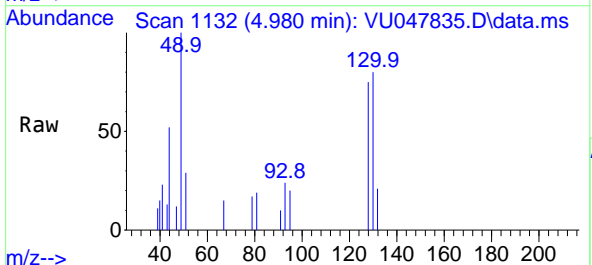
Instrument : MSVOA_U
 ClientSampleId : MDL02 0.25ppb



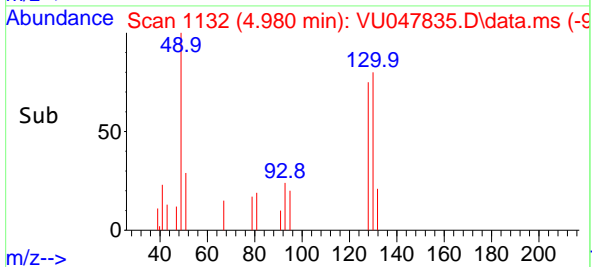
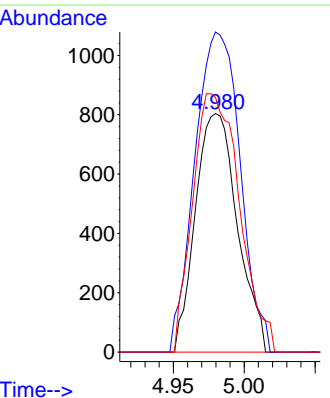
Tgt Ion: 73 Resp: 7888
 Ion Ratio Lower Upper
 73 100
 43 27.8 15.2 22.8#

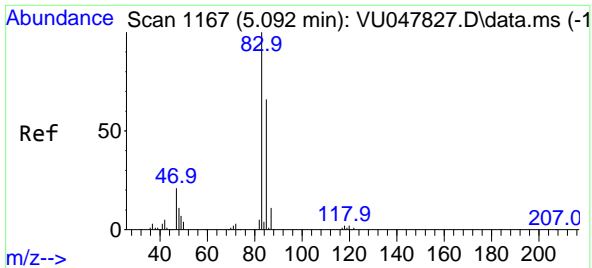


#26
 Bromochloromethane
 Concen: 0.241 ug/l
 RT: 4.980 min Scan# 1132
 Delta R.T. 0.000 min
 Lab File: VU047835.D
 Acq: 06 Apr 2022 17:58



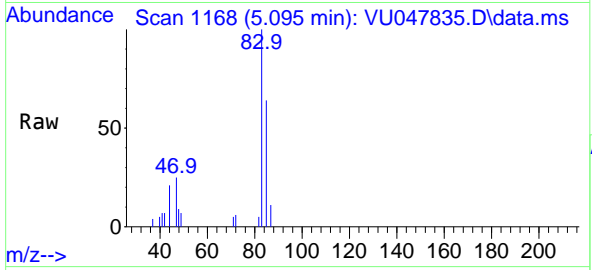
Tgt Ion: 128 Resp: 1658
 Ion Ratio Lower Upper
 128 100
 49 145.1 0.0 268.4
 130 120.7 102.9 154.3



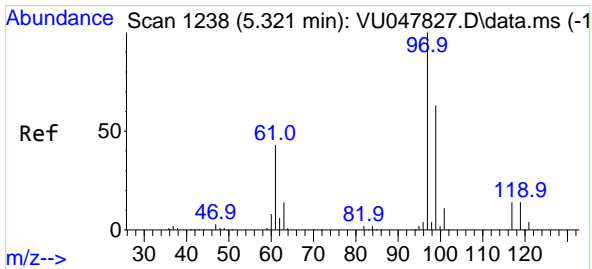
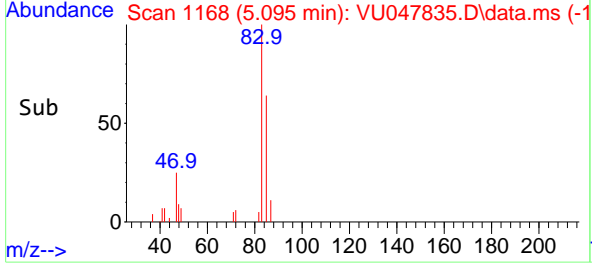
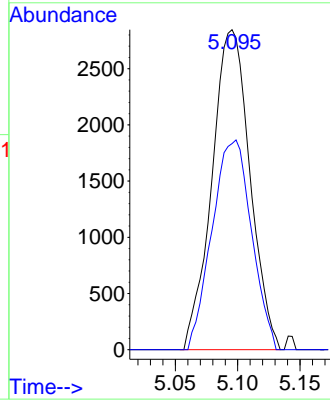


#27
 Chloroform
 Concen: 0.259 ug/l
 RT: 5.095 min Scan# 1167
 Delta R.T. 0.003 min
 Lab File: VU047835.D
 Acq: 06 Apr 2022 17:58

Instrument : MSVOA_U
 ClientSampleId : MDL02 0.25ppb

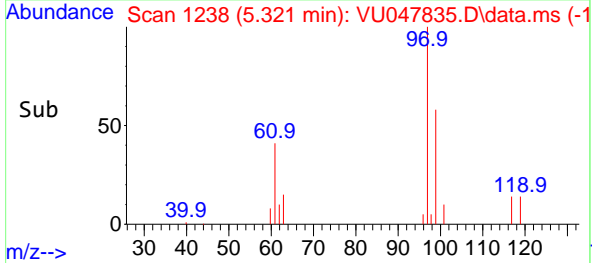
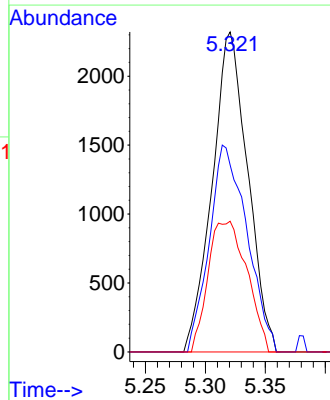
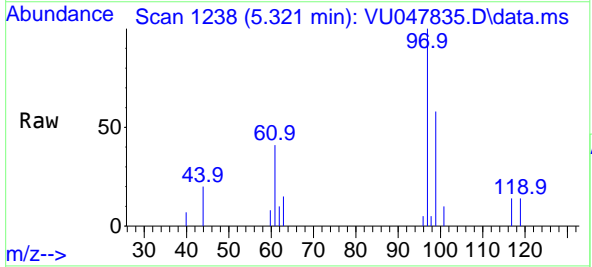


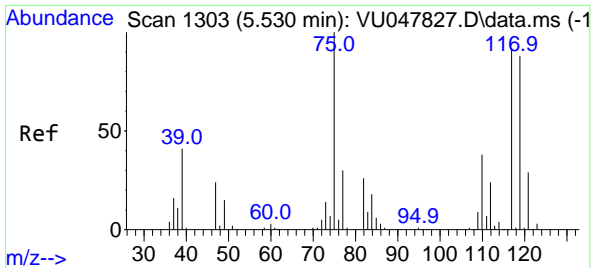
Tgt Ion: 83 Resp: 6052
 Ion Ratio Lower Upper
 83 100
 85 64.4 0.0 131.6



#28
 1,1,1-Trichloroethane
 Concen: 0.242 ug/l
 RT: 5.321 min Scan# 1238
 Delta R.T. 0.000 min
 Lab File: VU047835.D
 Acq: 06 Apr 2022 17:58

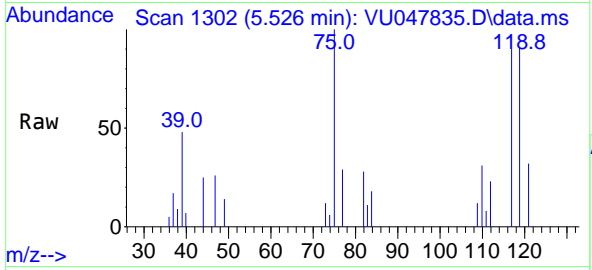
Tgt Ion: 97 Resp: 4780
 Ion Ratio Lower Upper
 97 100
 99 68.6 31.9 95.5
 61 44.7 21.8 65.4





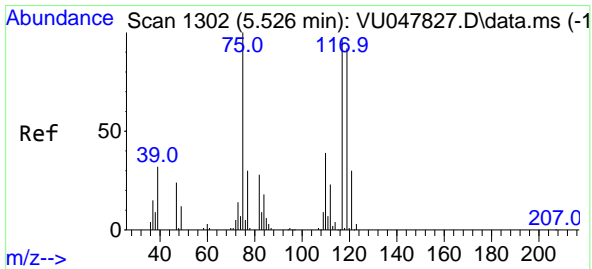
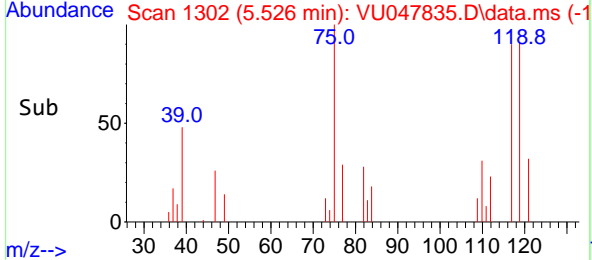
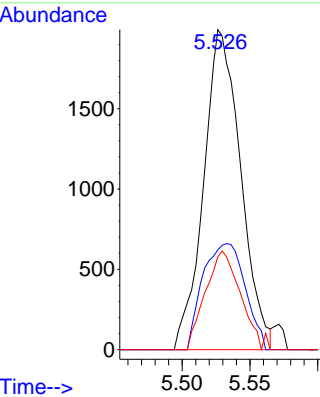
#29
 1,1-Dichloropropene
 Concen: 0.226 ug/l
 RT: 5.526 min Scan# 1111
 Delta R.T. -0.003 min
 Lab File: VU047835.D
 Acq: 06 Apr 2022 17:58

Instrument : MSVOA_U
 ClientSampleId : MDL02 0.25ppb



Tgt Ion: 75 Resp: 3786

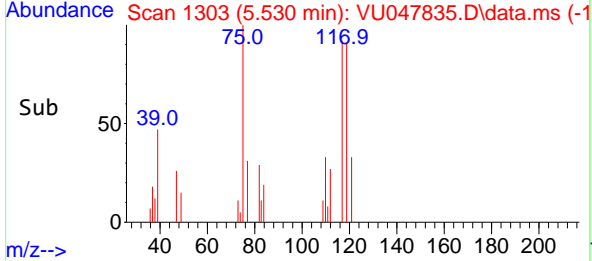
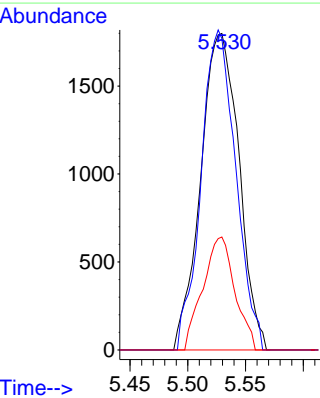
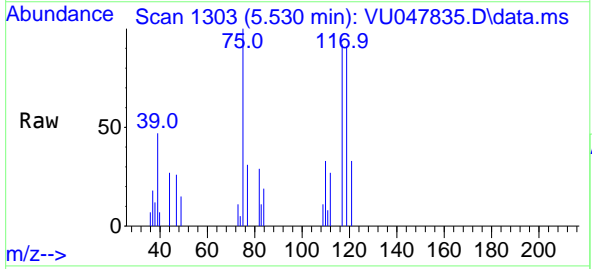
Ion	Ratio	Lower	Upper
75	100		
110	37.8	19.1	57.5
77	29.3	24.7	37.1

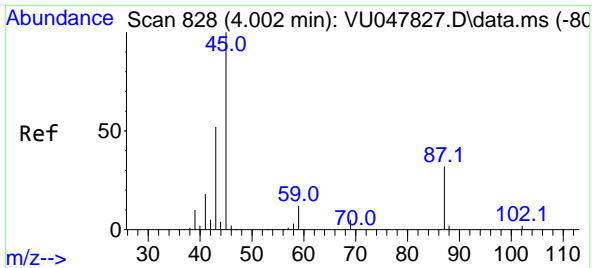


#30
 Carbon Tetrachloride
 Concen: 0.241 ug/l
 RT: 5.530 min Scan# 1303
 Delta R.T. 0.003 min
 Lab File: VU047835.D
 Acq: 06 Apr 2022 17:58

Tgt Ion: 117 Resp: 4143

Ion	Ratio	Lower	Upper
117	100		
119	98.4	77.2	115.8
121	35.7	25.0	37.6

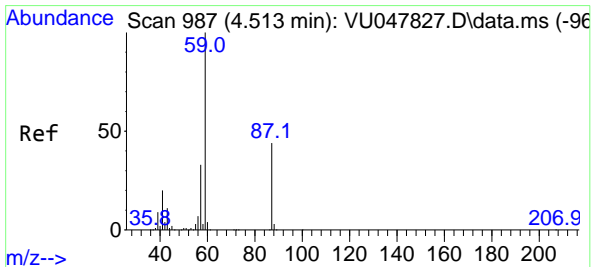
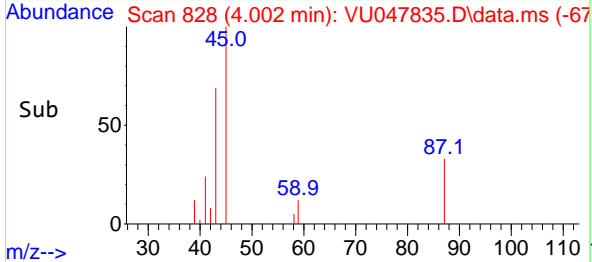
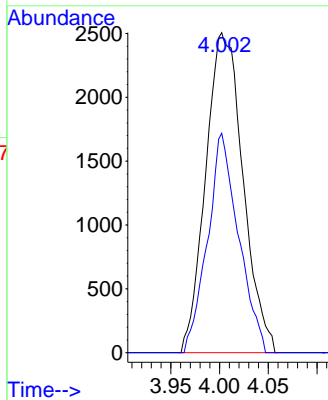
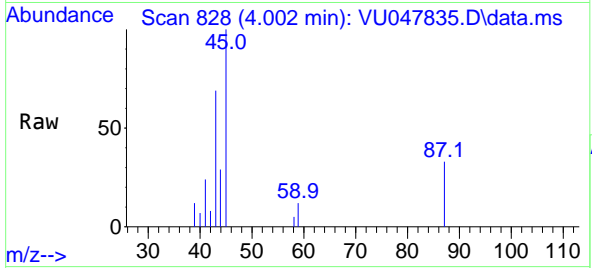




#31
 Isopropyl Ether
 Concen: 0.219 ug/l
 RT: 4.002 min Scan# 81
 Delta R.T. 0.000 min
 Lab File: VU047835.D
 Acq: 06 Apr 2022 17:58

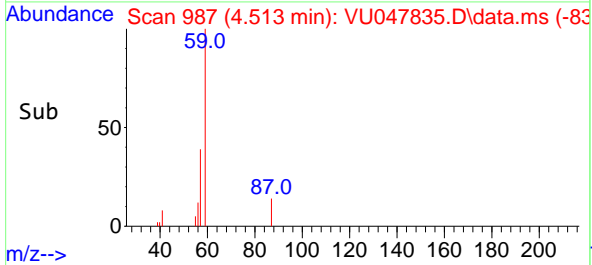
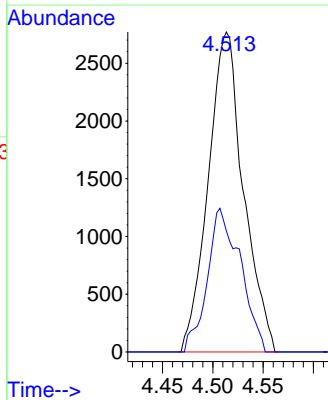
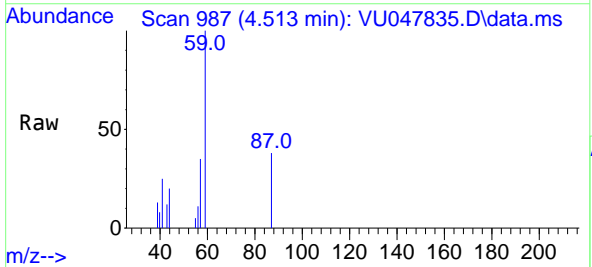
Instrument :
 MSVOA_U
 ClientSampleId :
 MDL02 0.25ppb

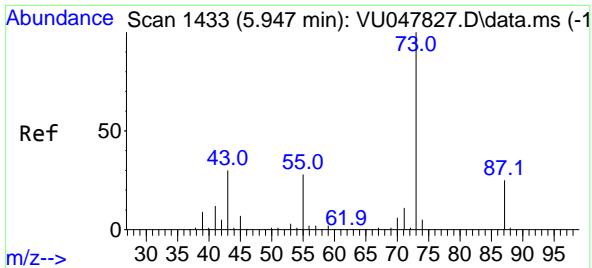
Tgt Ion: 45 Resp: 6668
 Ion Ratio Lower Upper
 45 100
 43 56.9 26.1 78.2



#32
 Ethyl-t-butyl ether
 Concen: 0.229 ug/l
 RT: 4.513 min Scan# 987
 Delta R.T. 0.000 min
 Lab File: VU047835.D
 Acq: 06 Apr 2022 17:58

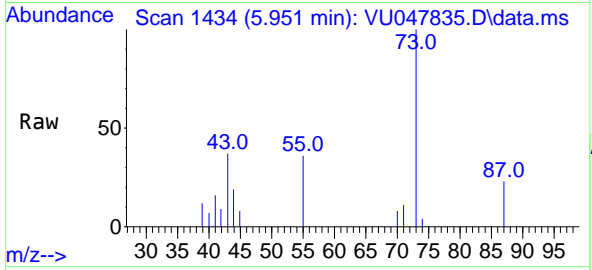
Tgt Ion: 59 Resp: 6755
 Ion Ratio Lower Upper
 59 100
 87 42.2 35.7 53.5





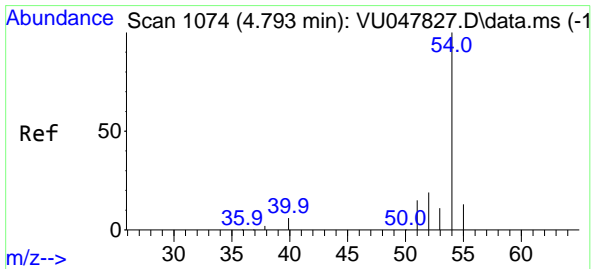
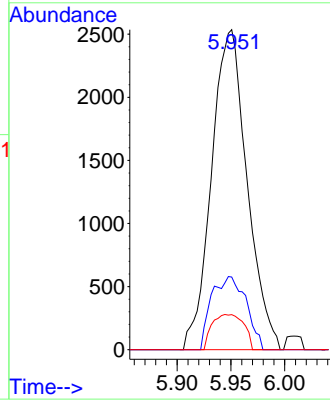
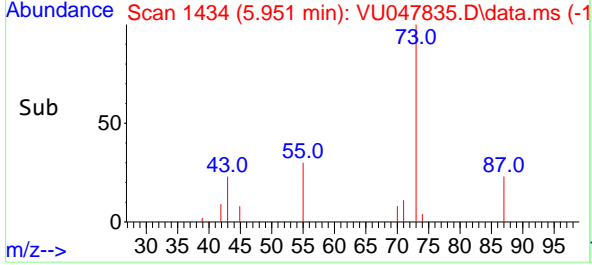
#33
 Tert-Amyl methyl ether
 Concen: 0.218 ug/l
 RT: 5.951 min Scan# 1433
 Delta R.T. 0.003 min
 Lab File: VU047835.D
 Acq: 06 Apr 2022 17:58

Instrument : MSVOA_U
 ClientSampleId : MDL02 0.25ppb

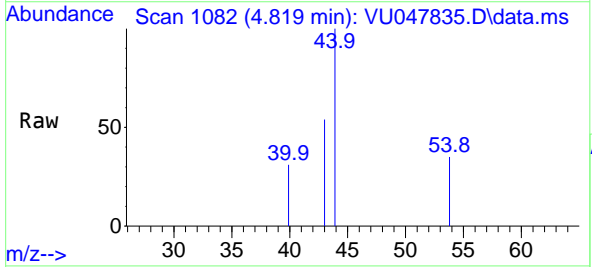


Tgt Ion: 73 Resp: 5832

Ion	Ratio	Lower	Upper
73	100		
87	22.2	19.9	29.9
71	9.8	9.2	13.8

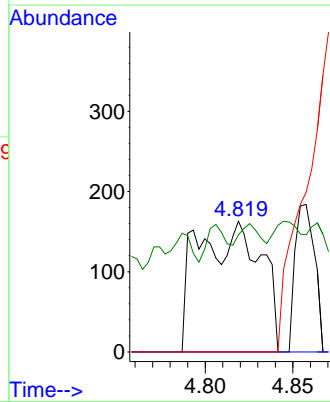
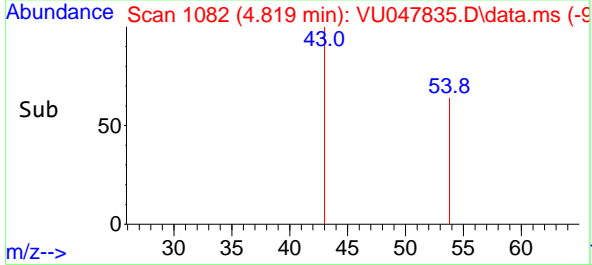


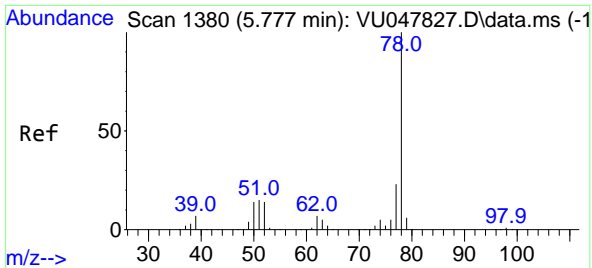
#34
 Propionitrile
 Concen: 0.383 ug/l m
 RT: 4.819 min Scan# 1082
 Delta R.T. 0.026 min
 Lab File: VU047835.D
 Acq: 06 Apr 2022 17:58



Tgt Ion: 54 Resp: 402

Ion	Ratio	Lower	Upper
54	100		
52	0.0	16.2	24.4#
55	0.0	11.0	16.6#
40	9.0	5.1	7.7#

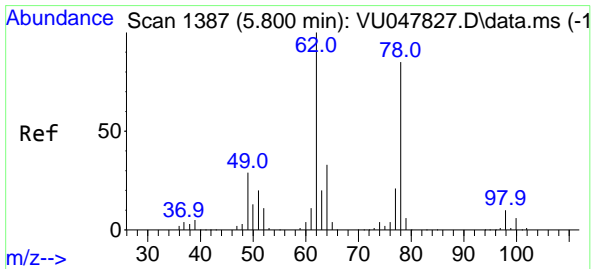
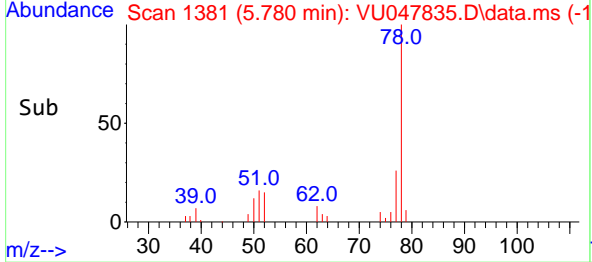
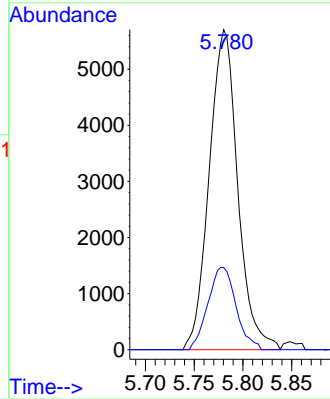
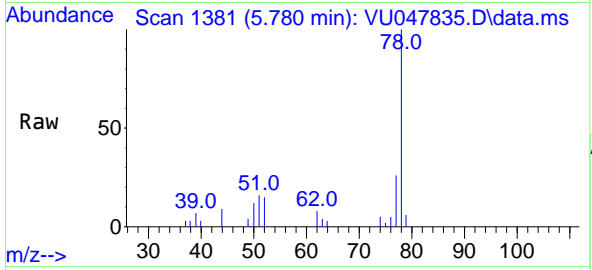




#35
Benzene
Concen: 0.233 ug/l
RT: 5.780 min Scan# 11
Delta R.T. 0.003 min
Lab File: VU047835.D
Acq: 06 Apr 2022 17:58

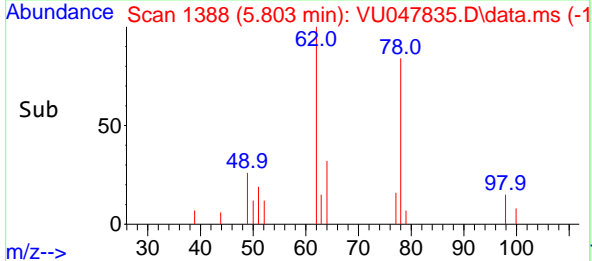
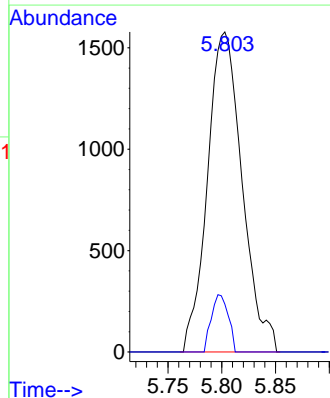
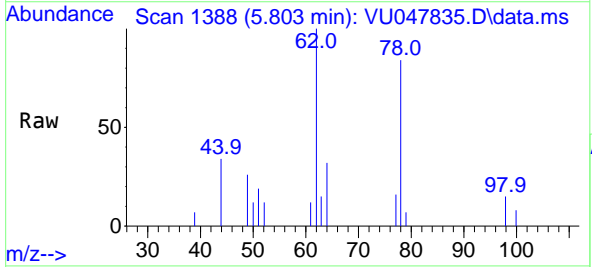
Instrument : MSVOA_U
ClientSampleId : MDL02 0.25ppb

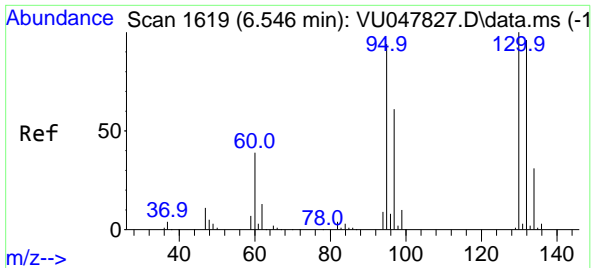
Tgt Ion: 78 Resp: 11630
Ion Ratio Lower Upper
78 100
77 25.6 18.7 28.1



#36
1,2-Dichloroethane
Concen: 0.241 ug/l
RT: 5.803 min Scan# 1388
Delta R.T. 0.003 min
Lab File: VU047835.D
Acq: 06 Apr 2022 17:58

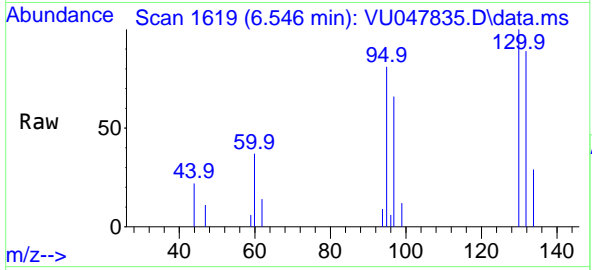
Tgt Ion: 62 Resp: 3548
Ion Ratio Lower Upper
62 100
98 8.7 7.7 11.5



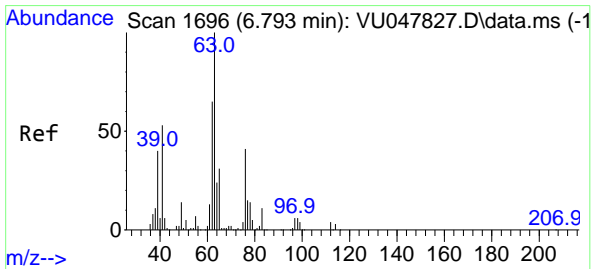
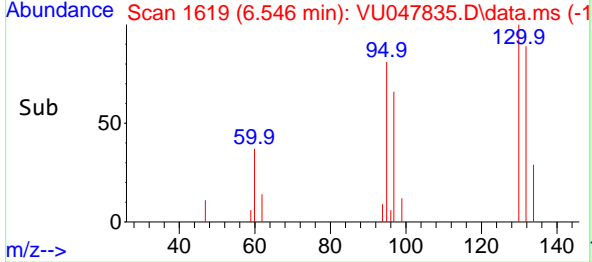
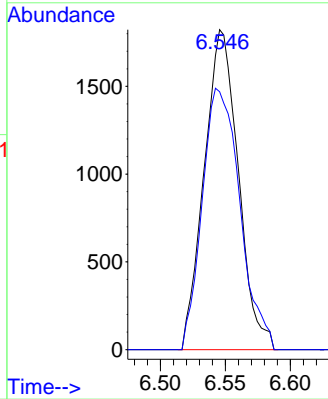


#37
 Trichloroethene
 Concen: 0.230 ug/l
 RT: 6.546 min Scan# 1619
 Delta R.T. 0.000 min
 Lab File: VU047835.D
 Acq: 06 Apr 2022 17:58

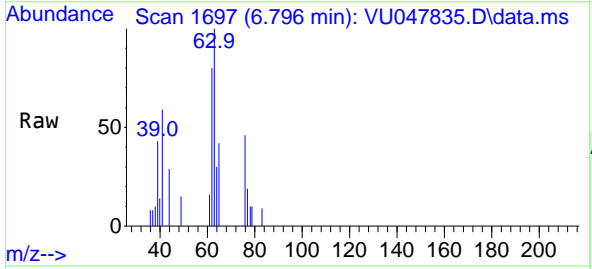
Instrument : MSVOA_U
 ClientSampleId : MDL02 0.25ppb



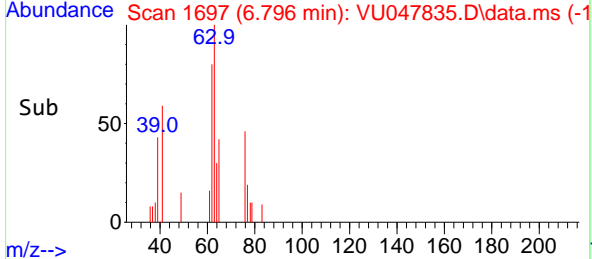
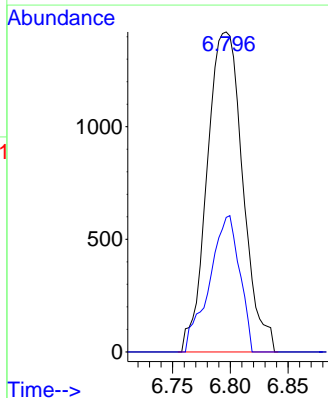
Tgt Ion:130 Resp: 3329
 Ion Ratio Lower Upper
 130 100
 95 80.6 75.4 113.2

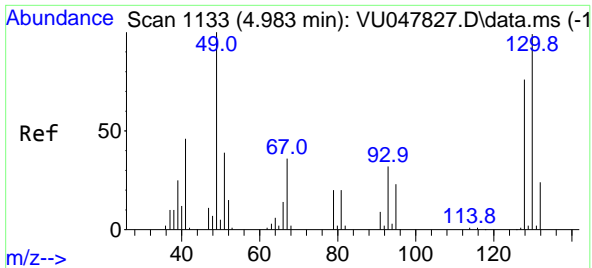


#38
 1,2-Dichloropropane
 Concen: 0.240 ug/l
 RT: 6.796 min Scan# 1697
 Delta R.T. 0.003 min
 Lab File: VU047835.D
 Acq: 06 Apr 2022 17:58



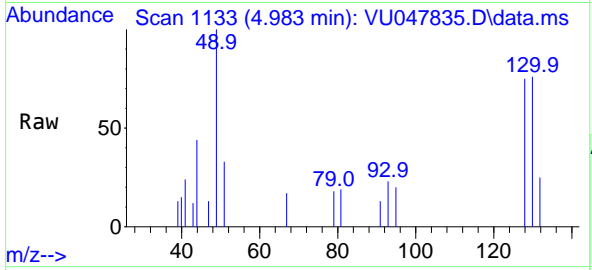
Tgt Ion: 63 Resp: 3050
 Ion Ratio Lower Upper
 63 100
 65 42.0 24.9 37.3#





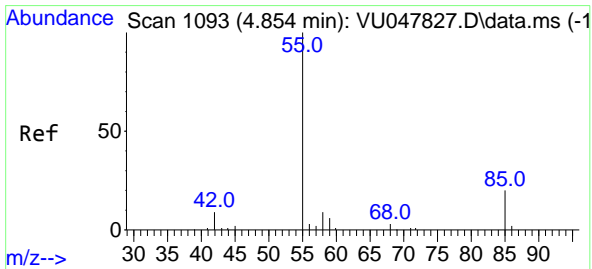
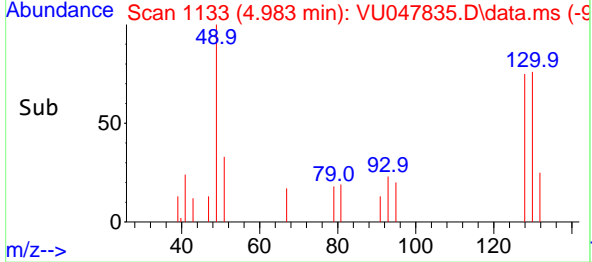
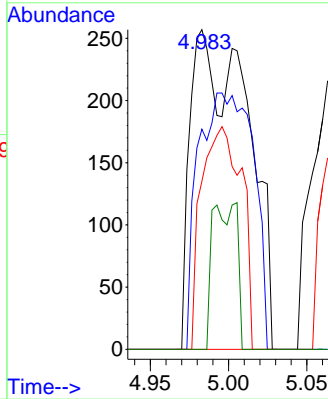
#39
 Methacrylonitrile
 Concen: 0.174 ug/l m
 RT: 4.983 min Scan# 1133
 Delta R.T. 0.000 min
 Lab File: VU047835.D
 Acq: 06 Apr 2022 17:58

Instrument : MSVOA_U
 ClientSampleId : MDL02 0.25ppb



Tgt Ion: 41 Resp: 651

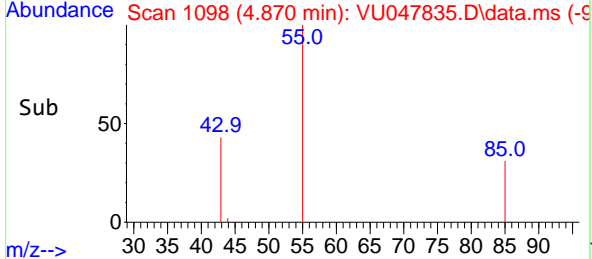
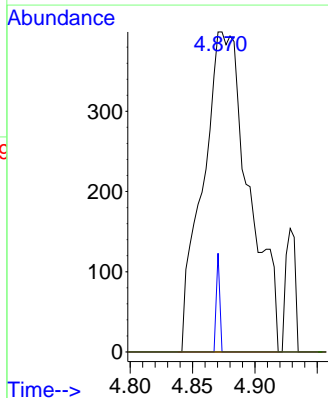
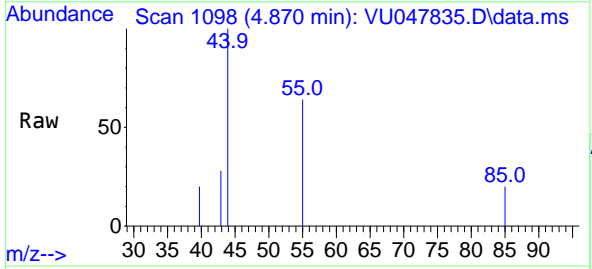
Ion	Ratio	Lower	Upper
41	100		
67	0.0	65.3	97.9#
39	0.0	43.6	65.4#
52	0.0	27.5	41.3#

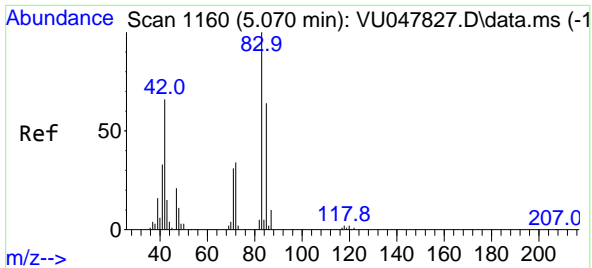


#40
 Methyl acrylate
 Concen: 0.168 ug/l
 RT: 4.870 min Scan# 1098
 Delta R.T. 0.016 min
 Lab File: VU047835.D
 Acq: 06 Apr 2022 17:58

Tgt Ion: 55 Resp: 1026

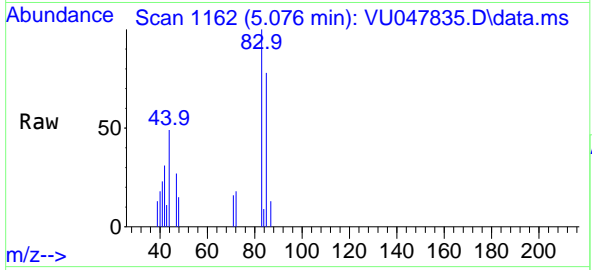
Ion	Ratio	Lower	Upper
55	100		
85	0.0	14.6	21.8#
58	0.0	6.7	10.1#
42	7.1	6.6	10.0





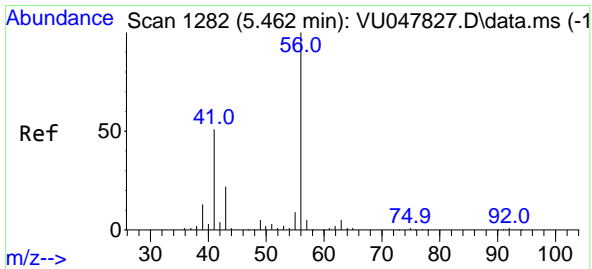
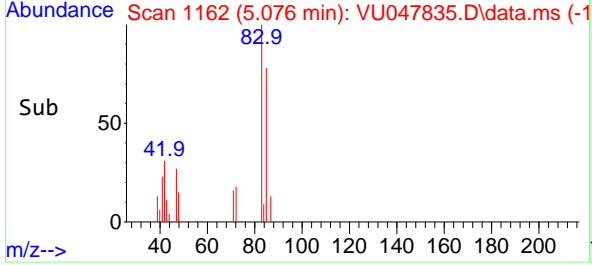
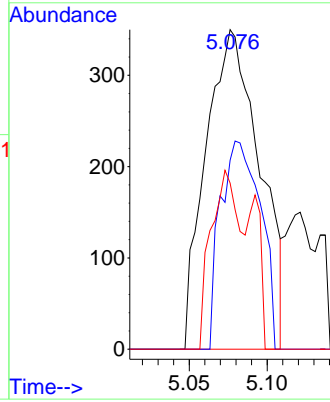
#41
 Tetrahydrofuran
 Concen: 0.400 ug/l
 RT: 5.076 min Scan# 1160
 Delta R.T. 0.006 min
 Lab File: VU047835.D
 Acq: 06 Apr 2022 17:58

Instrument : MSVOA_U
 ClientSampleId : MDL02 0.25ppb



Tgt Ion: 42 Resp: 843

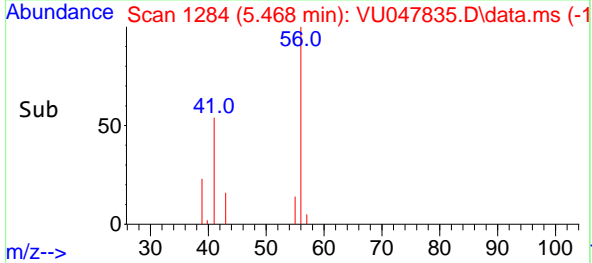
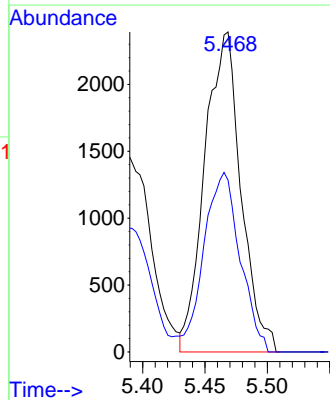
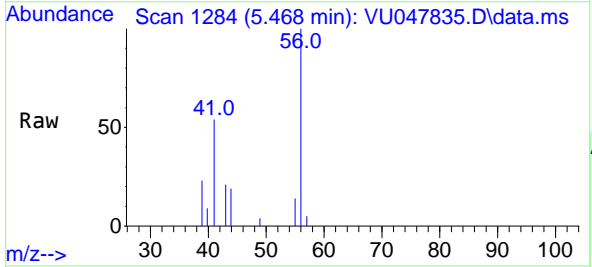
Ion	Ratio	Lower	Upper
42	100		
72	48.3	43.8	65.8
71	30.4	37.4	56.0

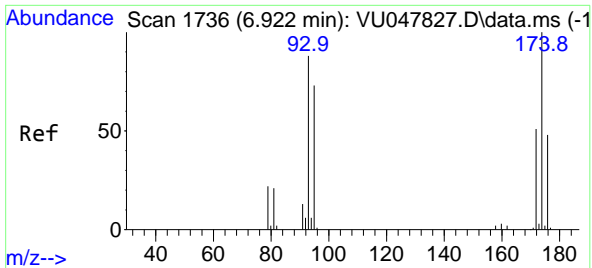


#42
 1-Chlorobutane
 Concen: 0.224 ug/l
 RT: 5.468 min Scan# 1284
 Delta R.T. 0.006 min
 Lab File: VU047835.D
 Acq: 06 Apr 2022 17:58

Tgt Ion: 56 Resp: 4828

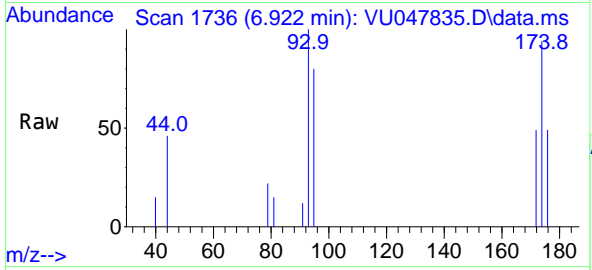
Ion	Ratio	Lower	Upper
56	100		
41	56.0	25.6	76.6



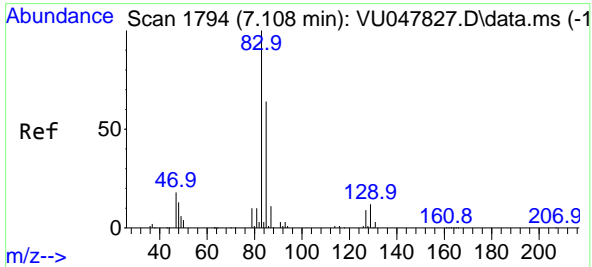
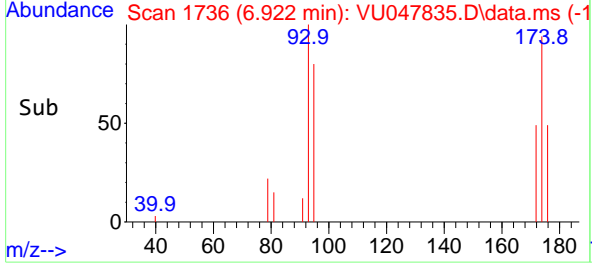
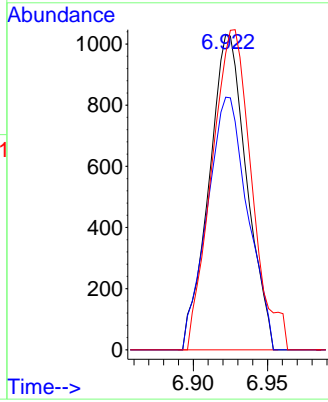


#43
 Dibromomethane
 Concen: 0.249 ug/l
 RT: 6.922 min Scan# 1736
 Delta R.T. 0.000 min
 Lab File: VU047835.D
 Acq: 06 Apr 2022 17:58

Instrument : MSVOA_U
 ClientSampleId : VU047835.D
 MDL02 0.25ppb

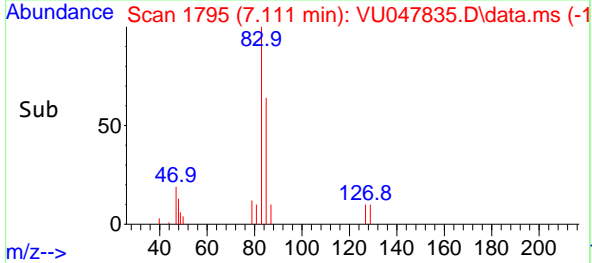
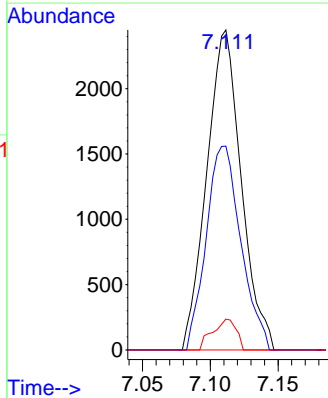
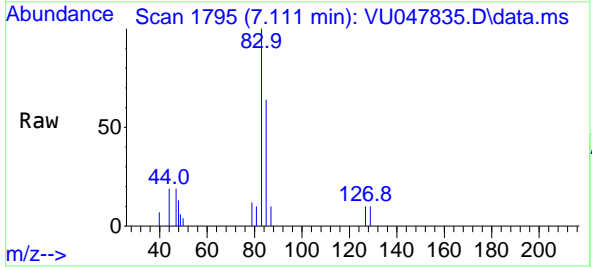


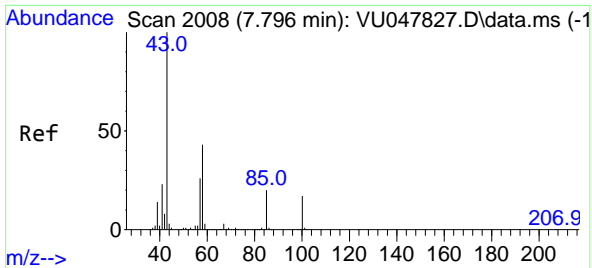
Tgt Ion: 93 Resp: 1818
 Ion Ratio Lower Upper
 93 100
 95 86.1 67.0 100.4
 174 107.8 89.8 134.8



#44
 Bromodichloromethane
 Concen: 0.257 ug/l
 RT: 7.111 min Scan# 1795
 Delta R.T. 0.003 min
 Lab File: VU047835.D
 Acq: 06 Apr 2022 17:58

Tgt Ion: 83 Resp: 4335
 Ion Ratio Lower Upper
 83 100
 85 63.7 50.8 76.2
 127 9.6 7.4 11.2



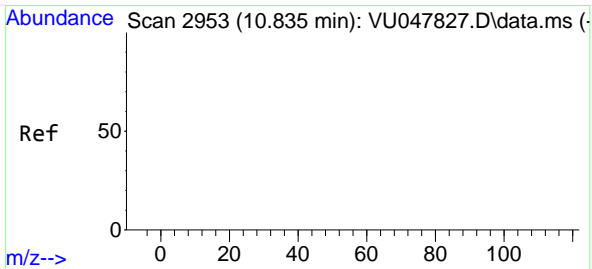
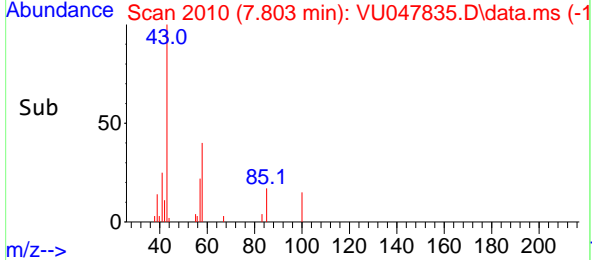
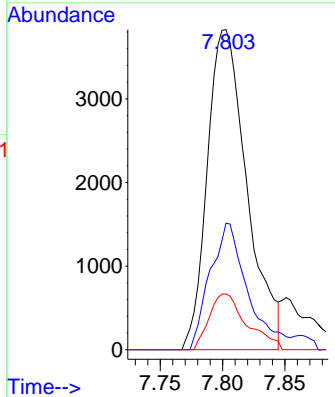
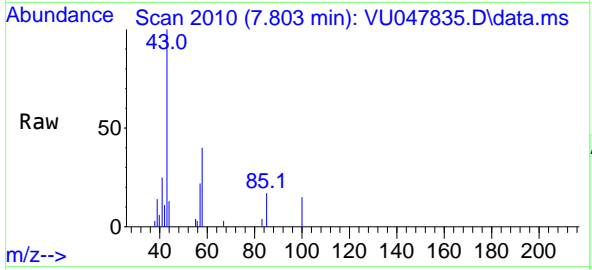


#45
 4-Methyl-2-Pentanone
 Concen: 1.132 ug/l
 RT: 7.803 min Scan# 2010
 Delta R.T. 0.006 min
 Lab File: VU047835.D
 Acq: 06 Apr 2022 17:58

Instrument : MSVOA_U
 Client Sample Id : MDL02 0.25ppb

Tgt Ion: 43 Resp: 8476

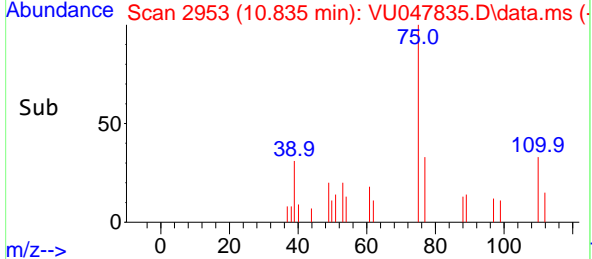
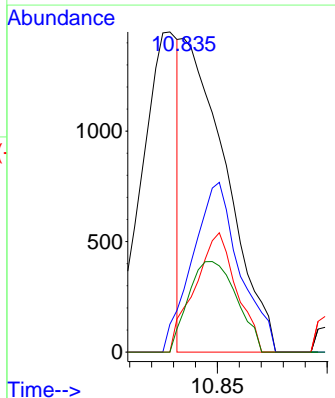
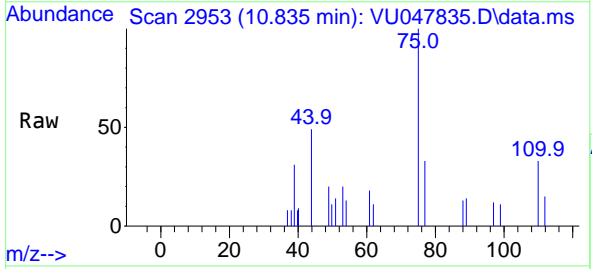
Ion	Ratio	Lower	Upper
43	100		
58	37.7	21.1	63.4
85	16.5	16.2	24.2

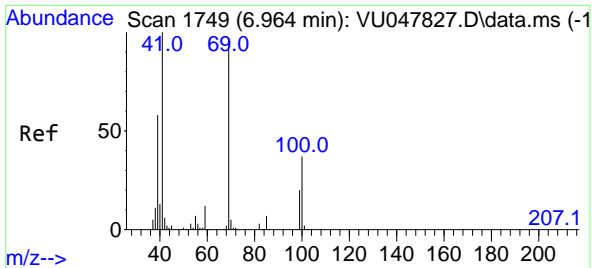


#46
 t-1,4-Dichloro-2-butene
 Concen: 0.563 ug/l m
 RT: 10.835 min Scan# 2953
 Delta R.T. 0.000 min
 Lab File: VU047835.D
 Acq: 06 Apr 2022 17:58

Tgt Ion: 75 Resp: 1992

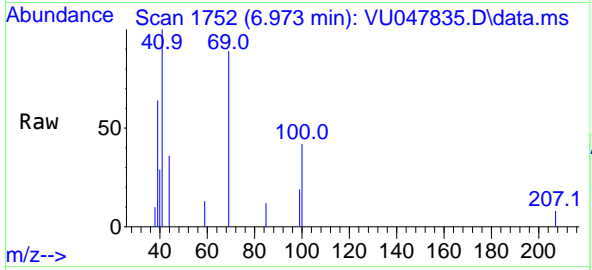
Ion	Ratio	Lower	Upper
75	100		
53	57.7	63.4	95.2#
89	35.7	43.6	65.4#
88	31.5	32.3	48.5#





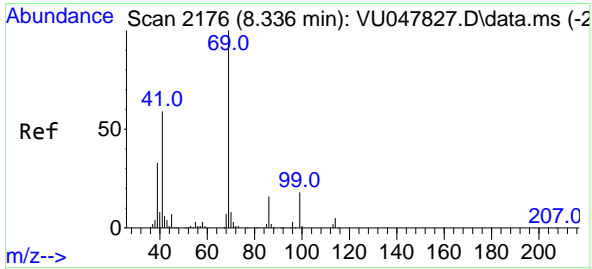
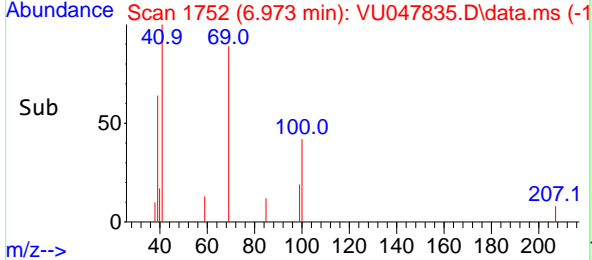
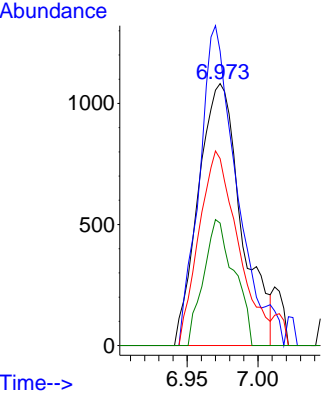
#47
 Methyl methacrylate
 Concen: 0.390 ug/l
 RT: 6.973 min Scan# 1752
 Delta R.T. 0.010 min
 Lab File: VU047835.D
 Acq: 06 Apr 2022 17:58

Instrument : MSVOA_U
 ClientSampleId : MDL02 0.25ppb



Tgt Ion: 69 Resp: 2283

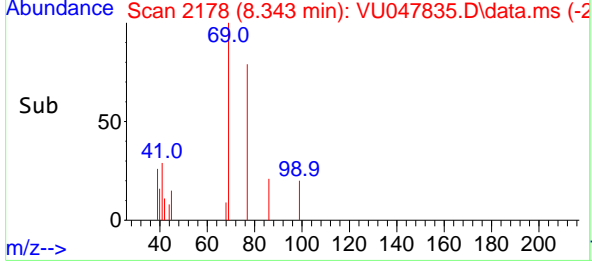
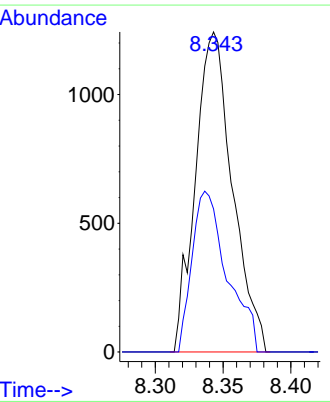
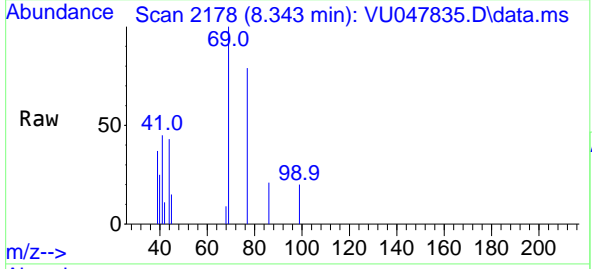
Ion	Ratio	Lower	Upper
69	100		
41	106.7	0.0	205.0
39	68.2	47.9	71.9
100	34.4	31.2	46.8

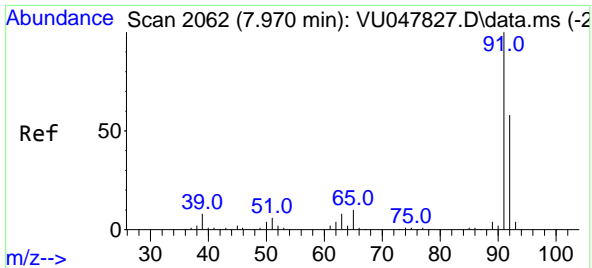


#48
 Ethyl methacrylate
 Concen: 0.219 ug/l
 RT: 8.343 min Scan# 2178
 Delta R.T. 0.006 min
 Lab File: VU047835.D
 Acq: 06 Apr 2022 17:58

Tgt Ion: 69 Resp: 2366

Ion	Ratio	Lower	Upper
69	100		
41	47.7	29.8	89.4

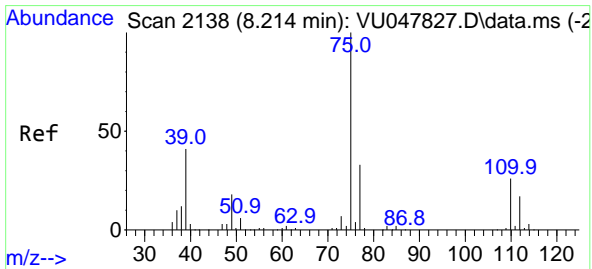
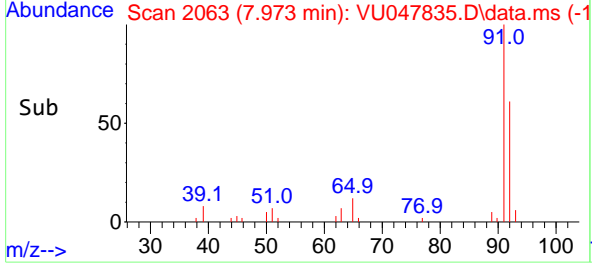
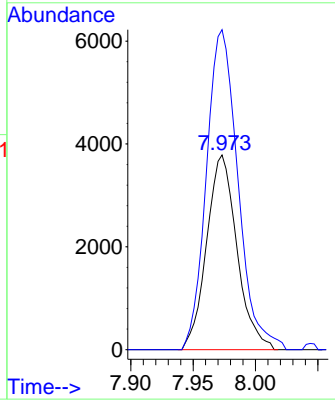
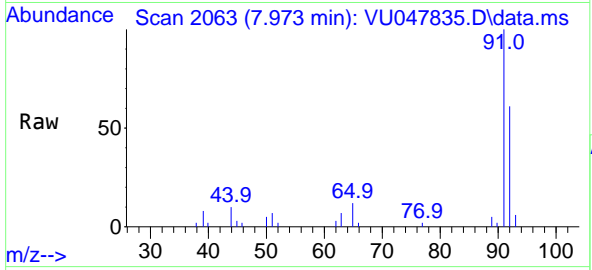




#49
 Toluene
 Concen: 0.211 ug/l
 RT: 7.973 min Scan# 2063
 Delta R.T. 0.003 min
 Lab File: VU047835.D
 Acq: 06 Apr 2022 17:58

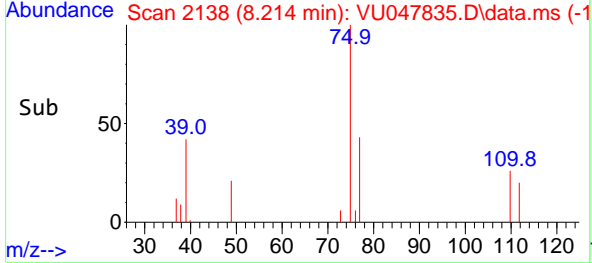
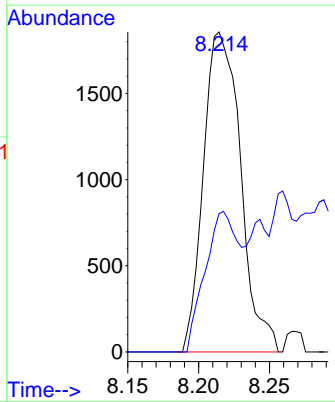
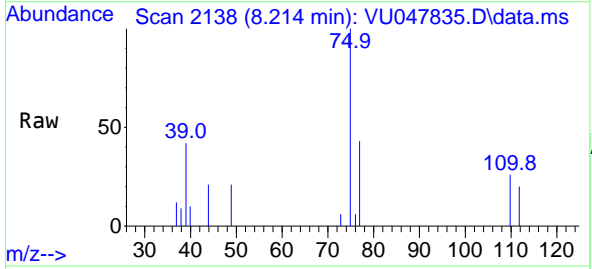
Instrument : MSVOA_U
 ClientSampleId : MDL02 0.25ppb

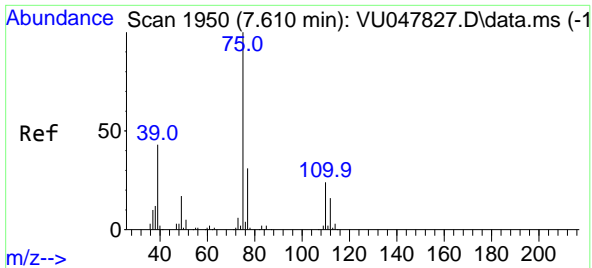
Tgt Ion: 92 Resp: 6416
 Ion Ratio Lower Upper
 92 100
 91 171.1 137.4 206.0



#50
 t-1,3-Dichloropropene
 Concen: 0.227 ug/l
 RT: 8.214 min Scan# 2138
 Delta R.T. 0.000 min
 Lab File: VU047835.D
 Acq: 06 Apr 2022 17:58

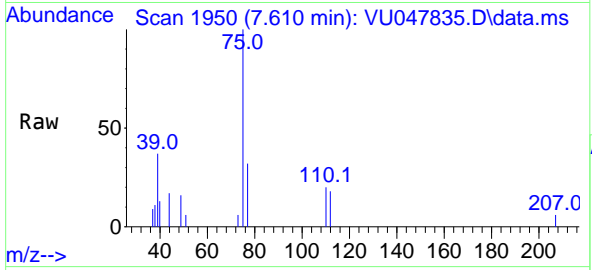
Tgt Ion: 75 Resp: 3382
 Ion Ratio Lower Upper
 75 100
 77 43.2 26.0 39.0#





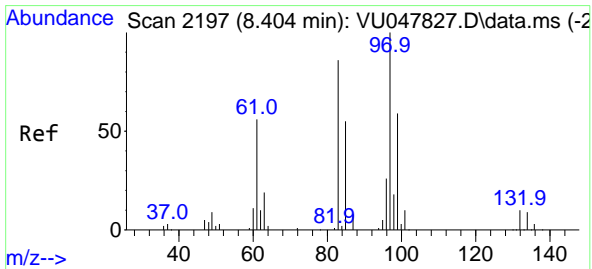
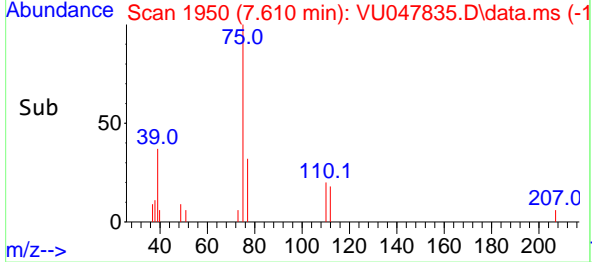
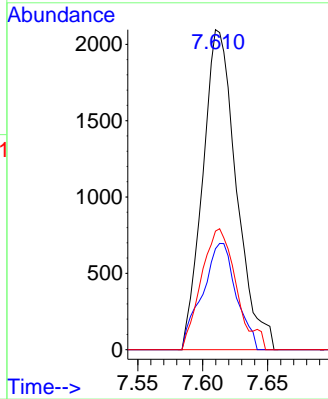
#51
 cis-1,3-Dichloropropene
 Concen: 0.220 ug/l
 RT: 7.610 min Scan# 1950
 Delta R.T. 0.000 min
 Lab File: VU047835.D
 Acq: 06 Apr 2022 17:58

Instrument : MSVOA_U
 ClientSampleId : VU047835.D
 MDL02 0.25ppb



Tgt Ion: 75 Resp: 3768

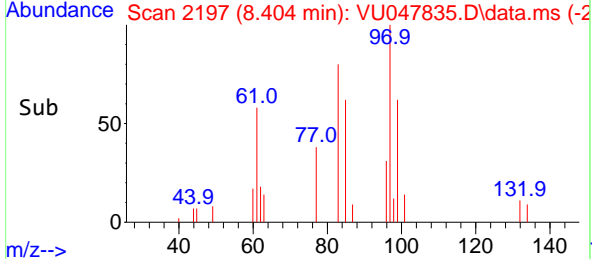
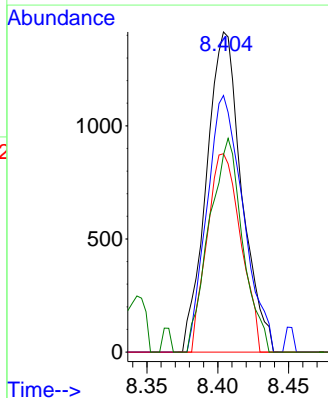
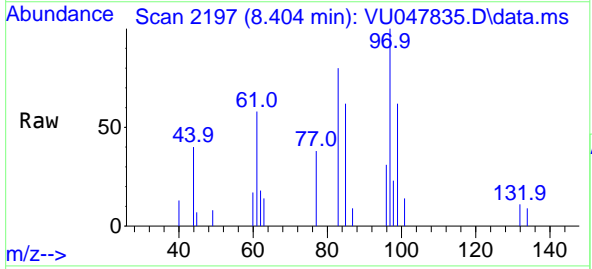
Ion	Ratio	Lower	Upper
75	100		
77	31.5	25.1	37.7
39	37.1	34.2	51.4

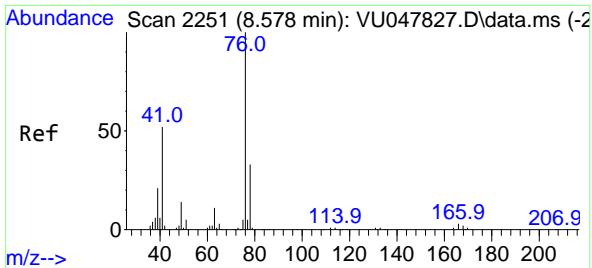


#52
 1,1,2-Trichloroethane
 Concen: 0.238 ug/l
 RT: 8.404 min Scan# 2197
 Delta R.T. 0.000 min
 Lab File: VU047835.D
 Acq: 06 Apr 2022 17:58

Tgt Ion: 97 Resp: 2450

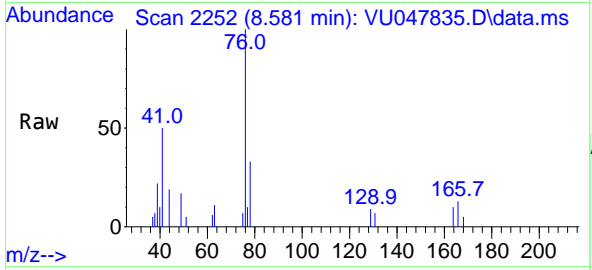
Ion	Ratio	Lower	Upper
97	100		
83	80.1	68.8	103.2
85	62.0	44.2	66.4
99	61.6	49.7	74.5



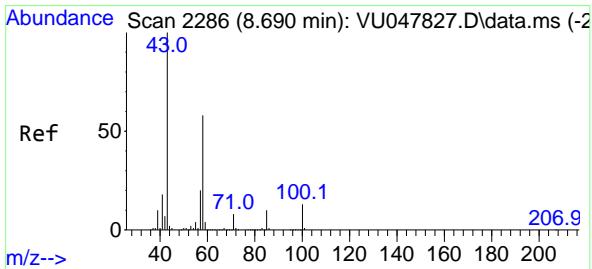
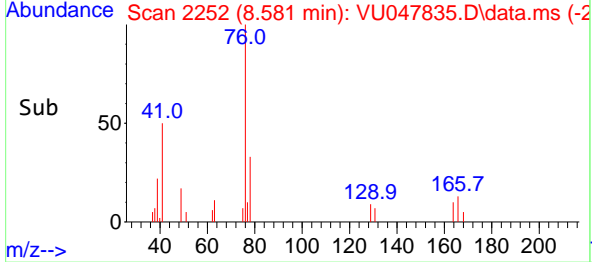
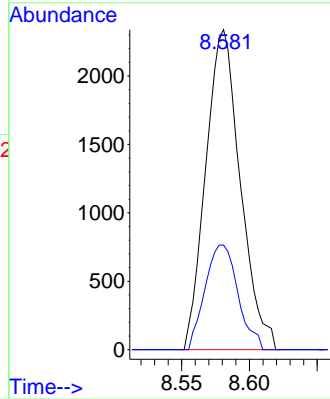


#53
 1,3-Dichloropropane
 Concen: 0.245 ug/l
 RT: 8.581 min Scan# 21
 Delta R.T. 0.003 min
 Lab File: VU047835.D
 Acq: 06 Apr 2022 17:58

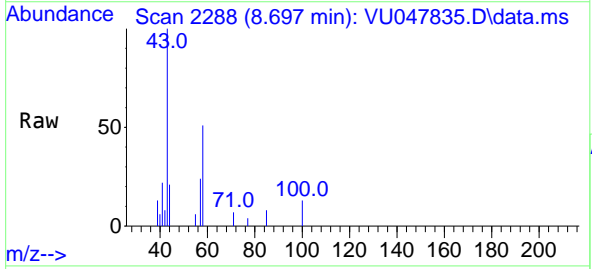
Instrument : MSVOA_U
 ClientSampleId : MDL02 0.25ppb



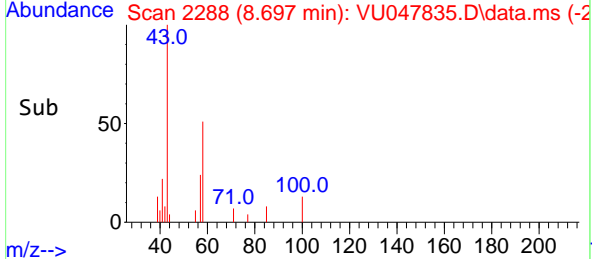
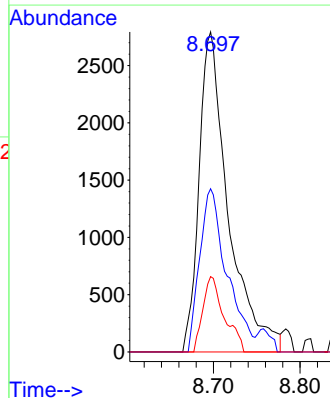
Tgt Ion: 76 Resp: 4142
 Ion Ratio Lower Upper
 76 100
 78 31.2 26.1 39.1

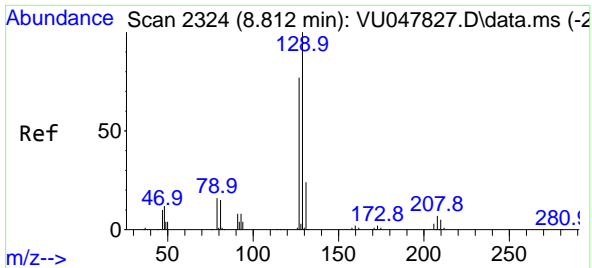


#54
 2-Hexanone
 Concen: 1.216 ug/l
 RT: 8.697 min Scan# 2288
 Delta R.T. 0.006 min
 Lab File: VU047835.D
 Acq: 06 Apr 2022 17:58



Tgt Ion: 43 Resp: 6547
 Ion Ratio Lower Upper
 43 100
 58 47.7 37.9 77.9
 57 17.2 0.0 39.5

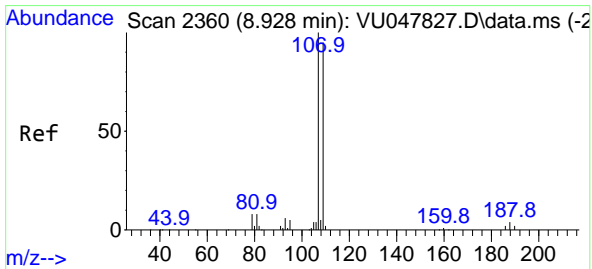
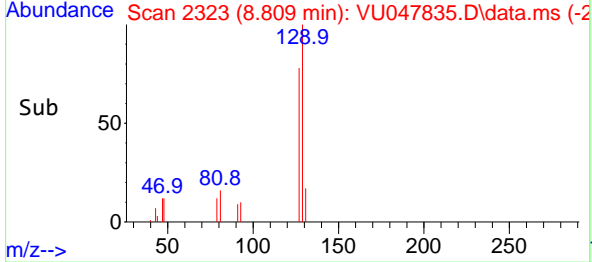
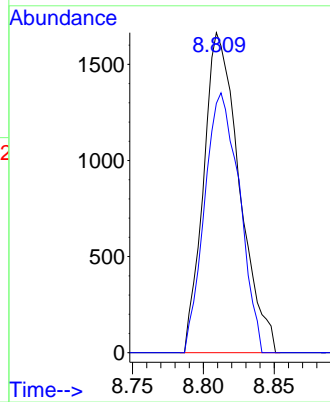
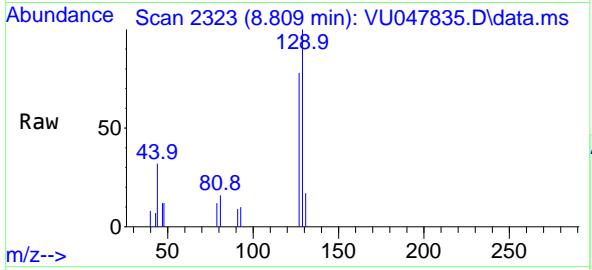




#55
 Dibromochloromethane
 Concen: 0.238 ug/l
 RT: 8.809 min Scan# 21
 Delta R.T. -0.003 min
 Lab File: VU047835.D
 Acq: 06 Apr 2022 17:58

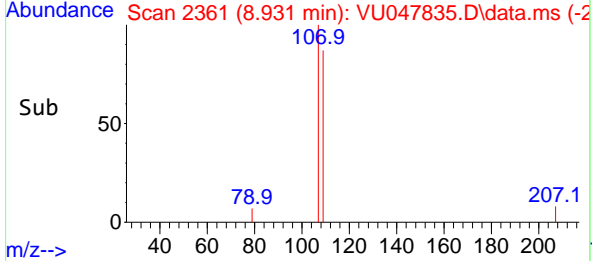
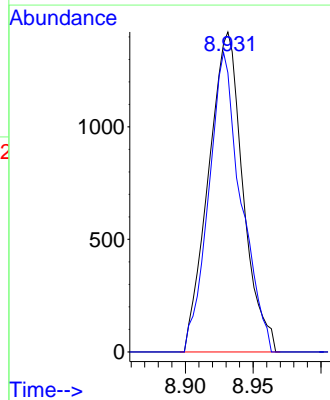
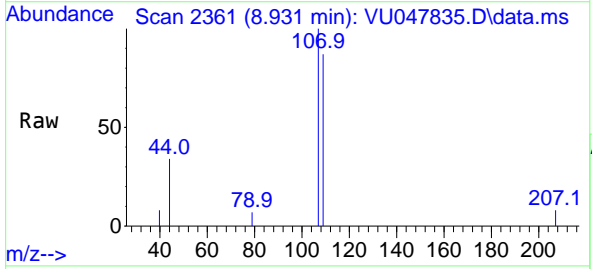
Instrument : MSVOA_U
 ClientSampleId : MDL02 0.25ppb

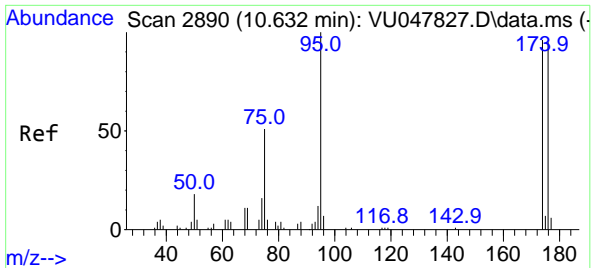
Tgt Ion:129 Resp: 2930
 Ion Ratio Lower Upper
 129 100
 127 79.1 61.8 92.8



#56
 1,2-Dibromoethane
 Concen: 0.255 ug/l
 RT: 8.931 min Scan# 2361
 Delta R.T. 0.003 min
 Lab File: VU047835.D
 Acq: 06 Apr 2022 17:58

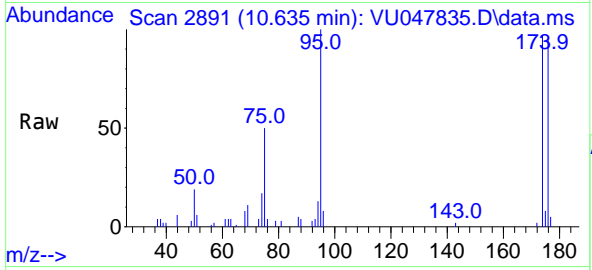
Tgt Ion:107 Resp: 2515
 Ion Ratio Lower Upper
 107 100
 109 87.8 0.0 186.8



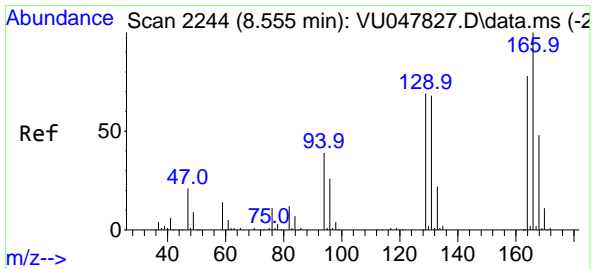
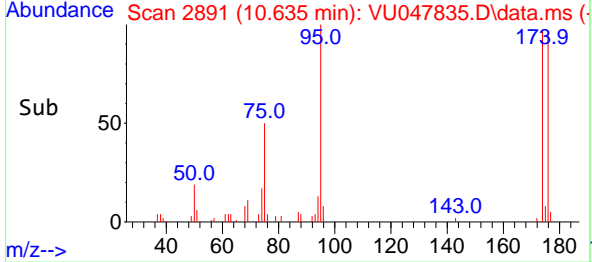
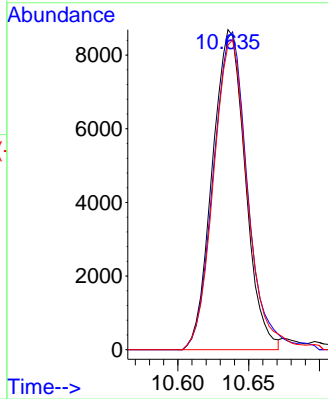


#57
 4-Bromofluorobenzene
 Concen: 0.858 ug/l
 RT: 10.635 min Scan# 21
 Delta R.T. 0.003 min
 Lab File: VU047835.D
 Acq: 06 Apr 2022 17:58

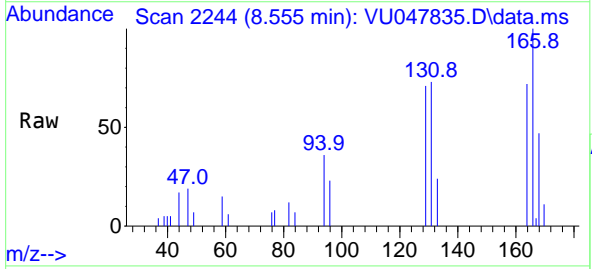
Instrument : MSVOA_U
 ClientSampleId : MDL02 0.25ppb



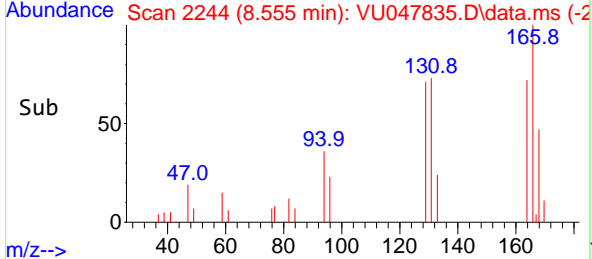
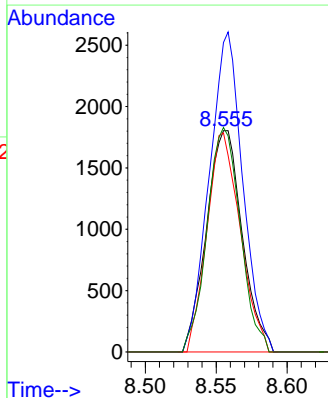
Tgt Ion: 95 Resp: 14048
 Ion Ratio Lower Upper
 95 100
 174 103.4 76.9 115.3
 176 100.1 76.4 114.6

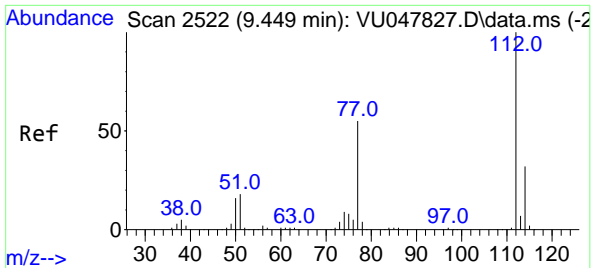


#58
 Tetrachloroethene
 Concen: 0.244 ug/l
 RT: 8.555 min Scan# 2244
 Delta R.T. 0.000 min
 Lab File: VU047835.D
 Acq: 06 Apr 2022 17:58



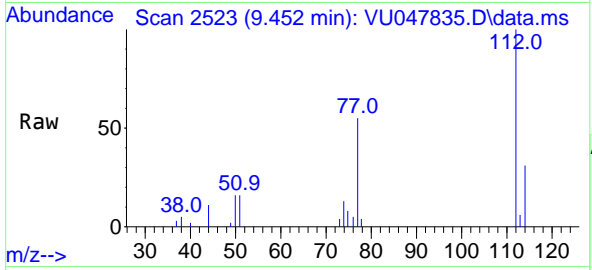
Tgt Ion: 164 Resp: 3177
 Ion Ratio Lower Upper
 164 100
 166 139.8 102.6 154.0
 129 98.9 71.1 106.7
 131 101.4 69.4 104.0



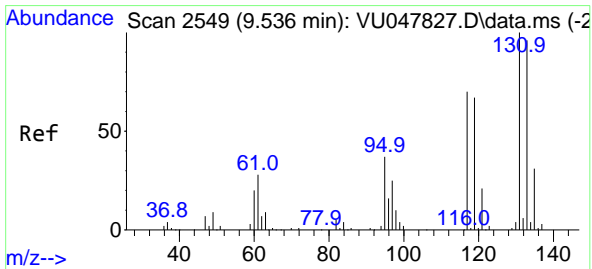
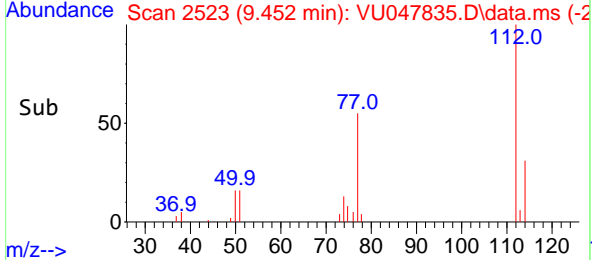
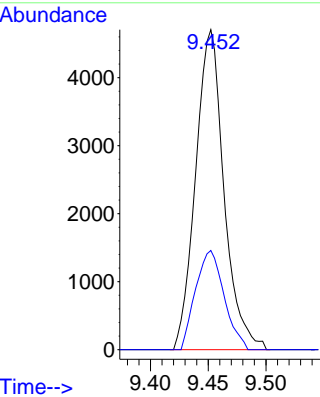


#59
 Chlorobenzene
 Concen: 0.224 ug/l
 RT: 9.452 min Scan# 21
 Delta R.T. 0.003 min
 Lab File: VU047835.D
 Acq: 06 Apr 2022 17:58

Instrument : MSVOA_U
 ClientSampleId : MDL02 0.25ppb

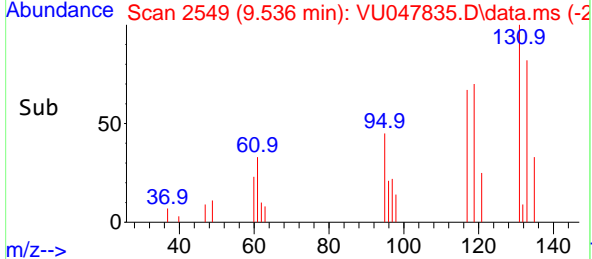
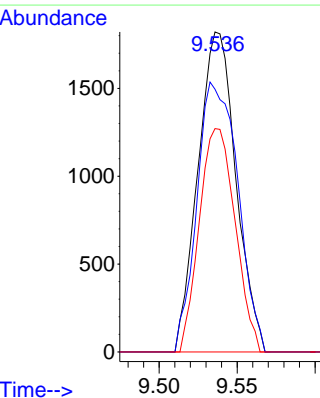
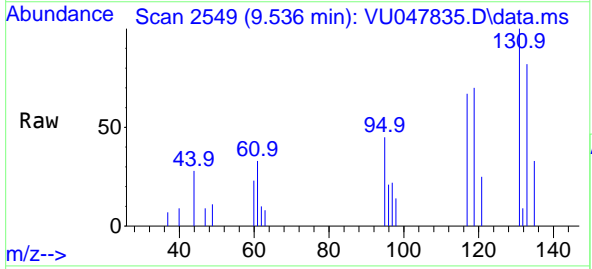


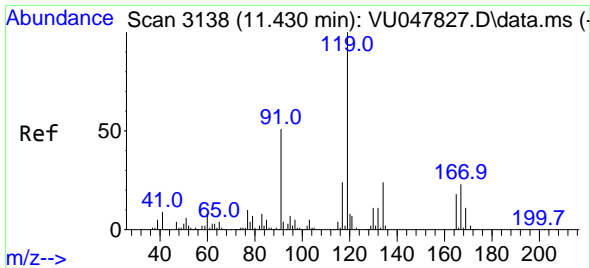
Tgt Ion:112 Resp: 8035
 Ion Ratio Lower Upper
 112 100
 114 31.0 25.5 38.3



#60
 1,1,1,2-Tetrachloroethane
 Concen: 0.243 ug/l
 RT: 9.536 min Scan# 2549
 Delta R.T. 0.000 min
 Lab File: VU047835.D
 Acq: 06 Apr 2022 17:58

Tgt Ion:131 Resp: 3088
 Ion Ratio Lower Upper
 131 100
 133 90.8 76.6 115.0
 119 65.9 53.1 79.7

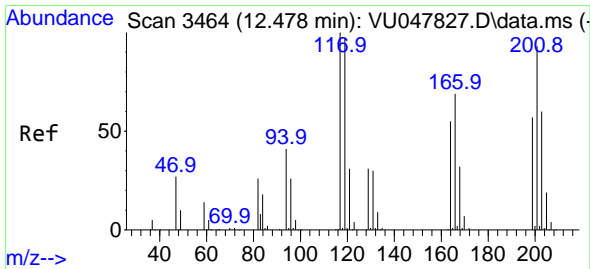
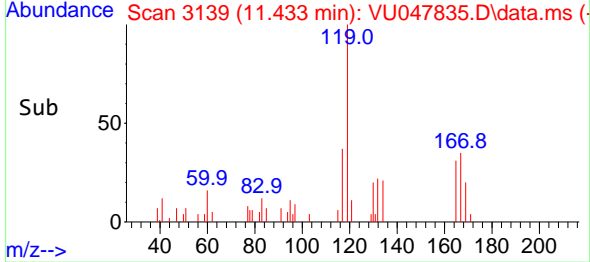
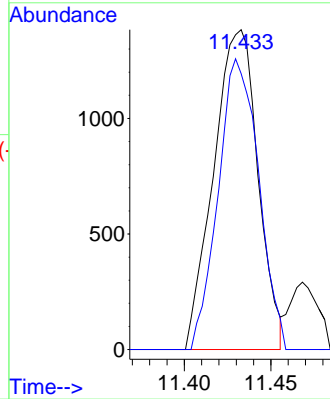
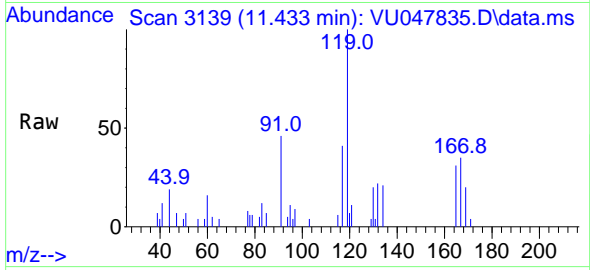




#61
 Pentachloroethane
 Concen: 0.233 ug/l
 RT: 11.433 min Scan# 3138
 Delta R.T. 0.003 min
 Lab File: VU047835.D
 Acq: 06 Apr 2022 17:58

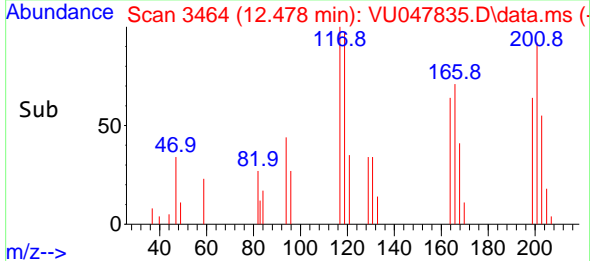
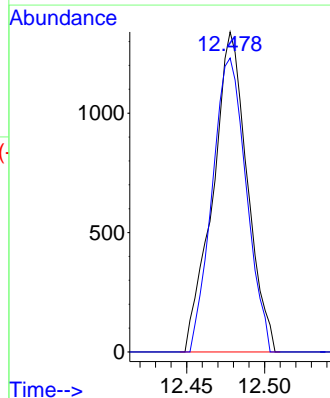
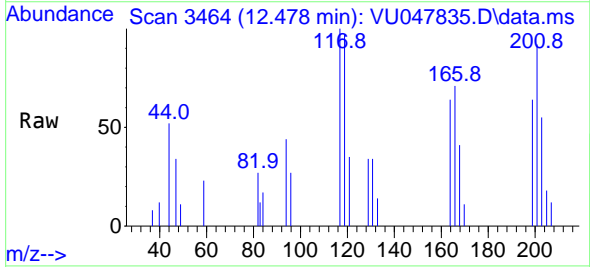
Instrument : MSVOA_U
 ClientSampleId : MDL02 0.25ppb

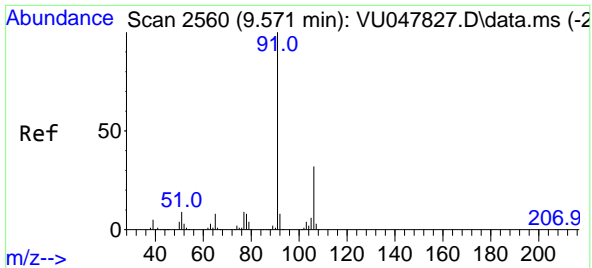
Tgt Ion:117 Resp: 2465
 Ion Ratio Lower Upper
 117 100
 167 83.0 71.0 106.4



#62
 Hexachloroethane
 Concen: 0.213 ug/l
 RT: 12.478 min Scan# 3464
 Delta R.T. 0.000 min
 Lab File: VU047835.D
 Acq: 06 Apr 2022 17:58

Tgt Ion:117 Resp: 2058
 Ion Ratio Lower Upper
 117 100
 201 0.0 74.8 112.2#

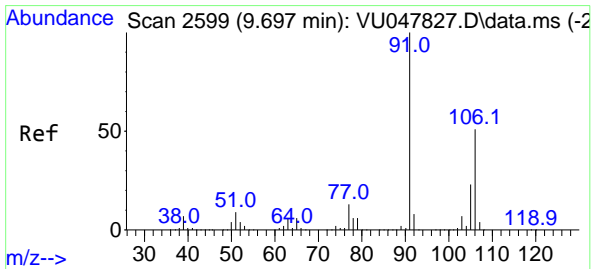
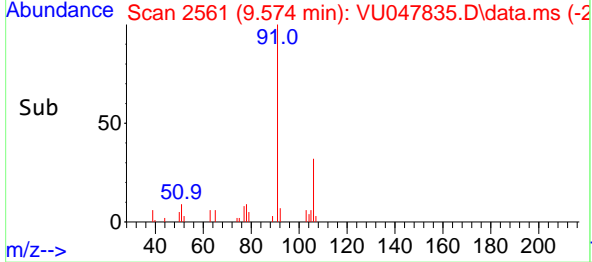
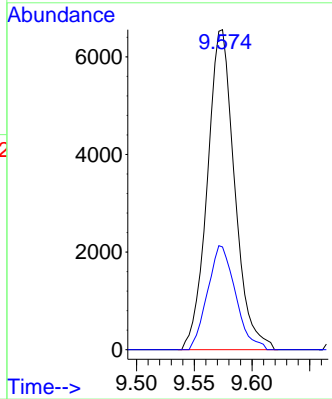
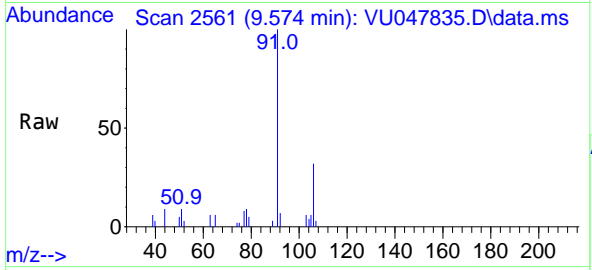




#63
 Ethyl Benzene
 Concen: 0.195 ug/l
 RT: 9.574 min Scan# 21
 Delta R.T. 0.003 min
 Lab File: VU047835.D
 Acq: 06 Apr 2022 17:58

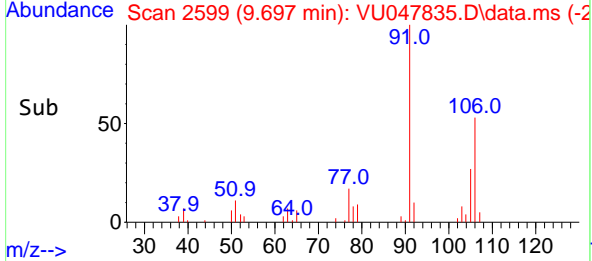
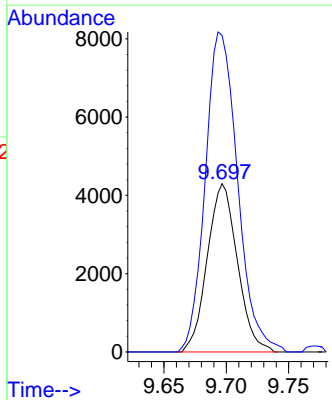
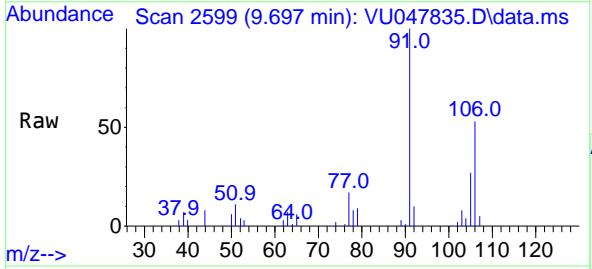
Instrument : MSVOA_U
 ClientSampleId : MDL02 0.25ppb

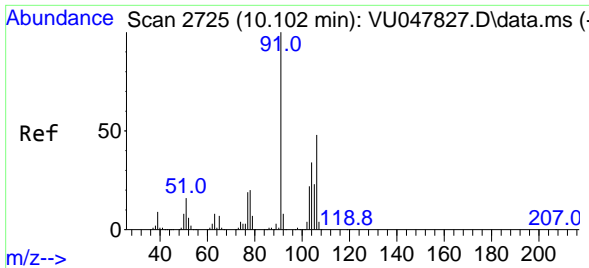
Tgt Ion: 91 Resp: 10774
 Ion Ratio Lower Upper
 91 100
 106 32.1 25.4 38.0



#64
 m/p-Xylenes
 Concen: 0.329 ug/l
 RT: 9.697 min Scan# 2599
 Delta R.T. 0.000 min
 Lab File: VU047835.D
 Acq: 06 Apr 2022 17:58

Tgt Ion:106 Resp: 7238
 Ion Ratio Lower Upper
 106 100
 91 204.0 158.2 237.4

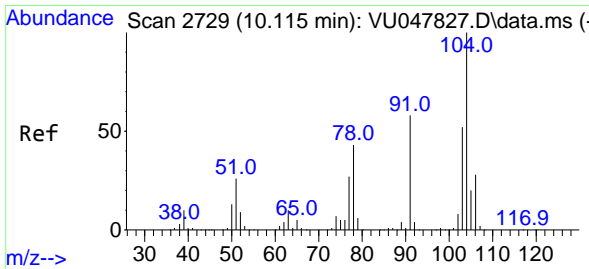
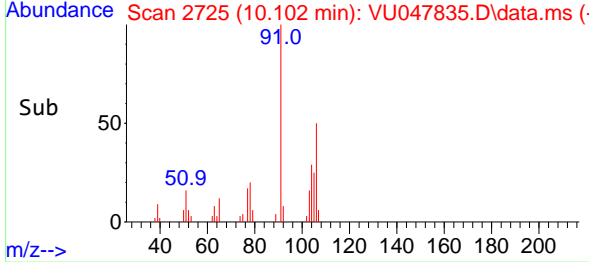
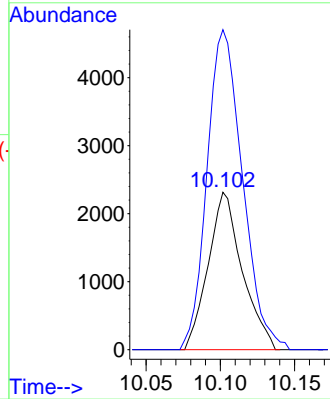
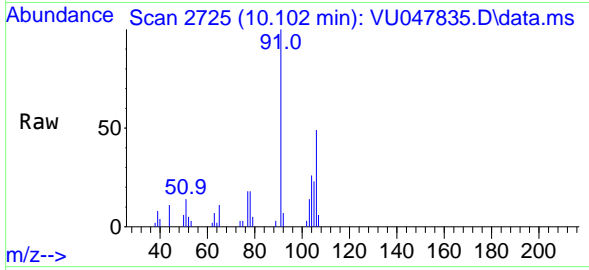




#65
 o-Xylene
 Concen: 0.176 ug/l
 RT: 10.102 min Scan# 21
 Delta R.T. 0.000 min
 Lab File: VU047835.D
 Acq: 06 Apr 2022 17:58

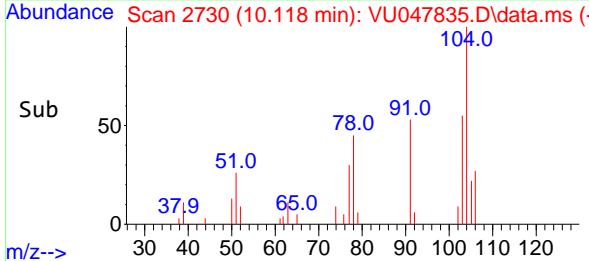
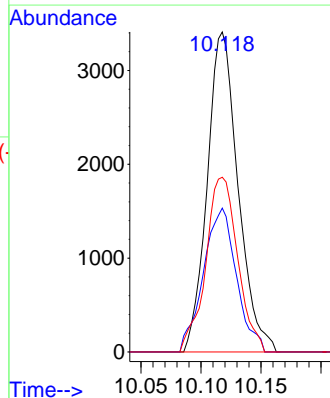
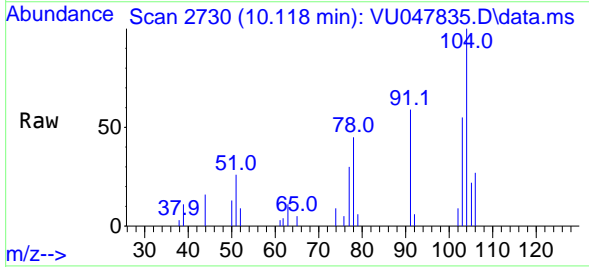
Instrument :
 MSVOA_U
 ClientSampleId :
 MDL02 0.25ppb

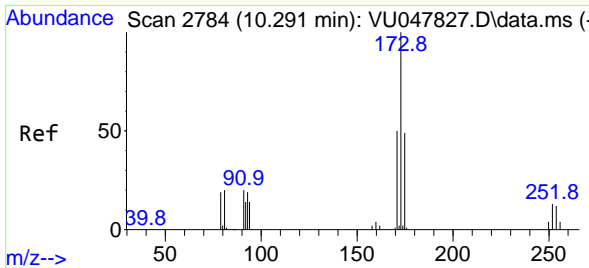
Tgt Ion:106 Resp: 3701
 Ion Ratio Lower Upper
 106 100
 91 210.9 105.4 316.2



#66
 Styrene
 Concen: 0.172 ug/l
 RT: 10.118 min Scan# 2730
 Delta R.T. 0.003 min
 Lab File: VU047835.D
 Acq: 06 Apr 2022 17:58

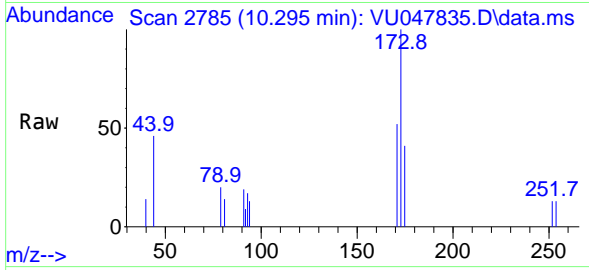
Tgt Ion:104 Resp: 6099
 Ion Ratio Lower Upper
 104 100
 78 48.2 37.1 55.7
 103 56.6 44.1 66.1



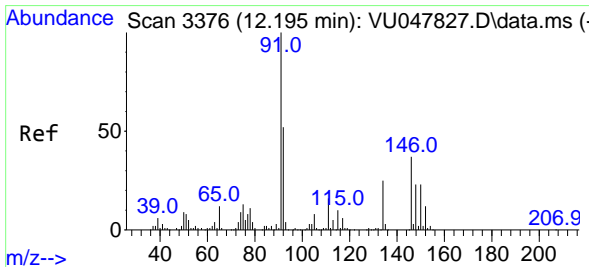
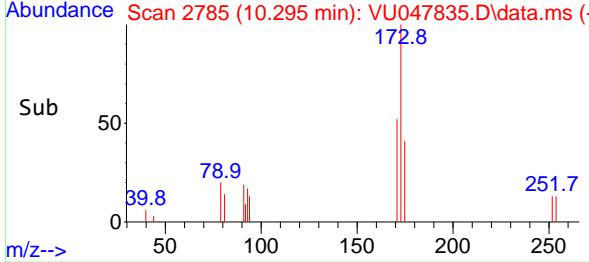
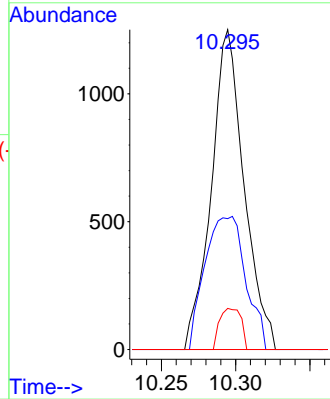


#67
 Bromoform
 Concen: 0.246 ug/l
 RT: 10.295 min Scan# 21
 Delta R.T. 0.003 min
 Lab File: VU047835.D
 Acq: 06 Apr 2022 17:58

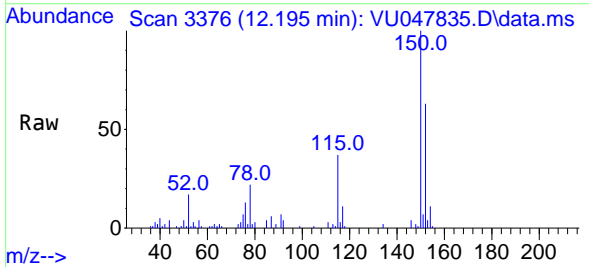
Instrument :
 MSVOA_U
 ClientSampleId :
 MDL02 0.25ppb



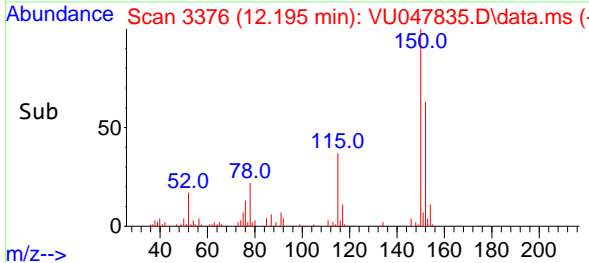
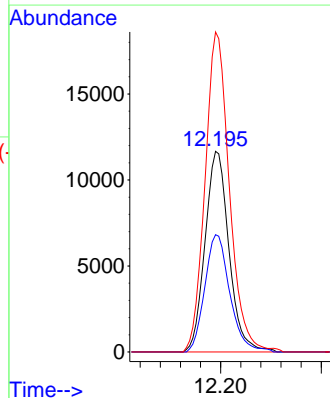
Tgt Ion:173 Resp: 1920
 Ion Ratio Lower Upper
 173 100
 175 51.8 39.0 58.4
 254 8.4 9.4 14.2#

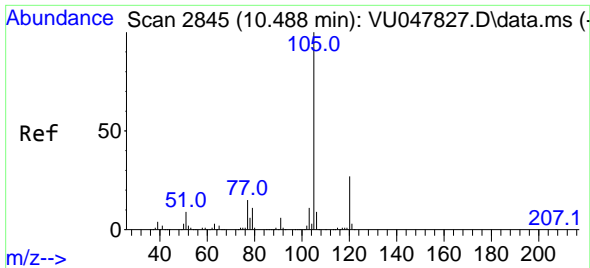


#68
 1,2-Dichlorobenzene-d4
 Concen: 0.977 ug/l
 RT: 12.195 min Scan# 3376
 Delta R.T. 0.000 min
 Lab File: VU047835.D
 Acq: 06 Apr 2022 17:58



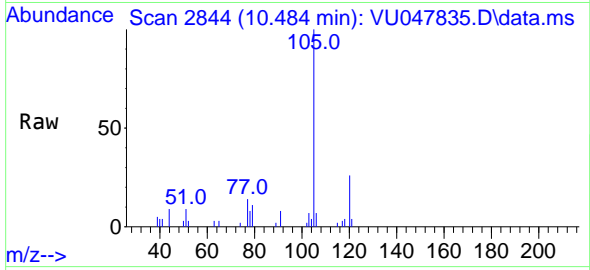
Tgt Ion:152 Resp: 19296
 Ion Ratio Lower Upper
 152 100
 115 61.0 0.0 255.8
 150 162.1 0.0 659.8



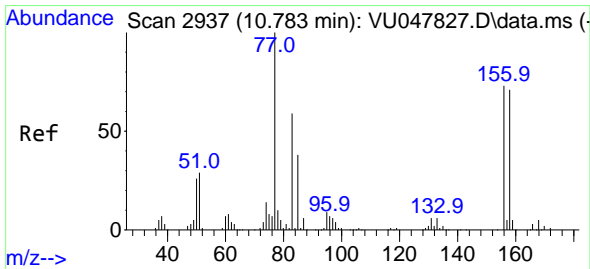
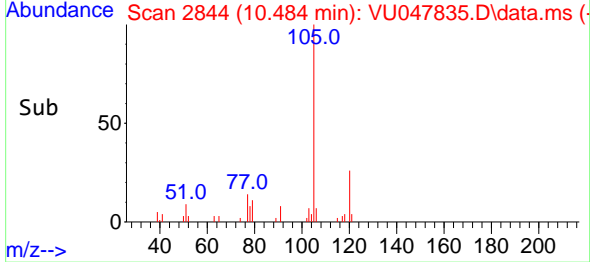
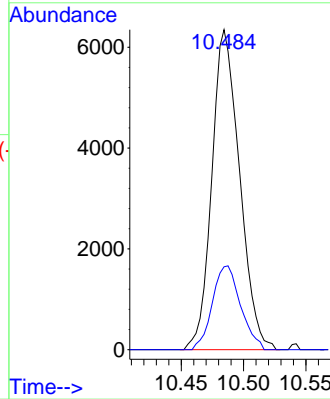


#69
 Isopropylbenzene
 Concen: 0.179 ug/l
 RT: 10.484 min Scan# 21
 Delta R.T. -0.003 min
 Lab File: VU047835.D
 Acq: 06 Apr 2022 17:58

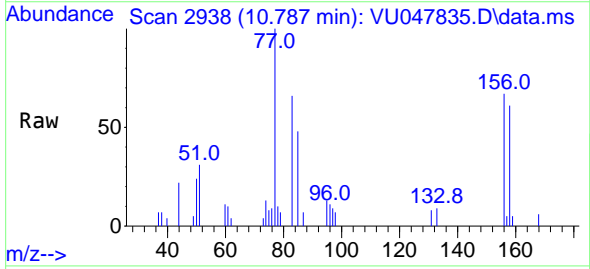
Instrument :
 MSVOA_U
 ClientSampleId :
 MDL02 0.25ppb



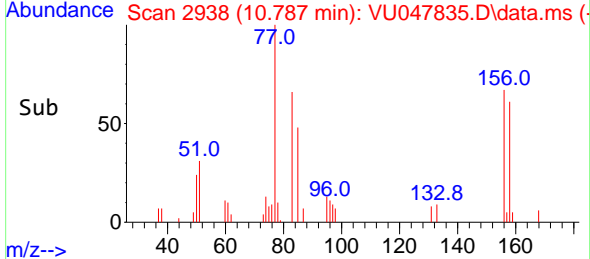
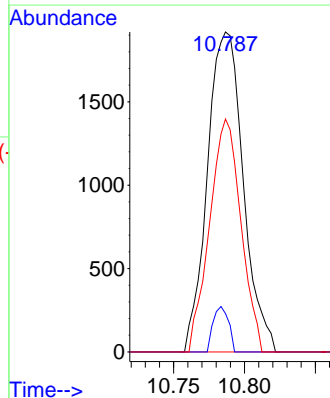
Tgt Ion:105 Resp: 9845
 Ion Ratio Lower Upper
 105 100
 120 26.6 13.6 40.8

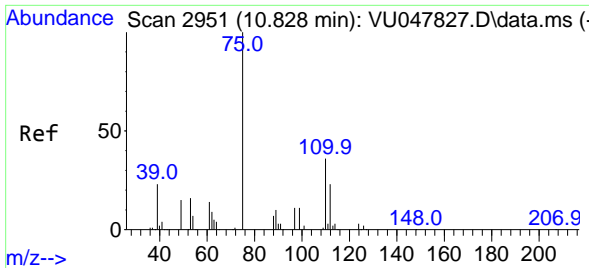


#70
 1,1,2,2-Tetrachloroethane
 Concen: 0.253 ug/l
 RT: 10.787 min Scan# 2938
 Delta R.T. 0.003 min
 Lab File: VU047835.D
 Acq: 06 Apr 2022 17:58



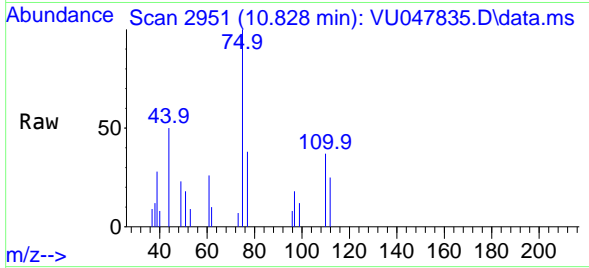
Tgt Ion: 83 Resp: 3375
 Ion Ratio Lower Upper
 83 100
 131 6.0 8.2 12.4#
 85 63.5 52.6 79.0





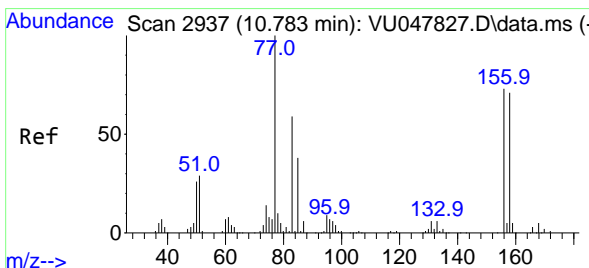
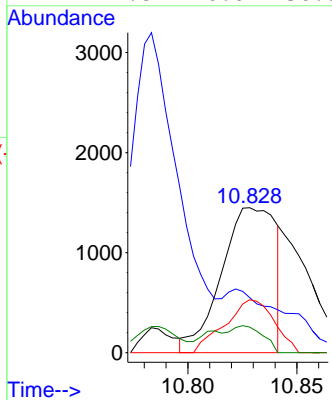
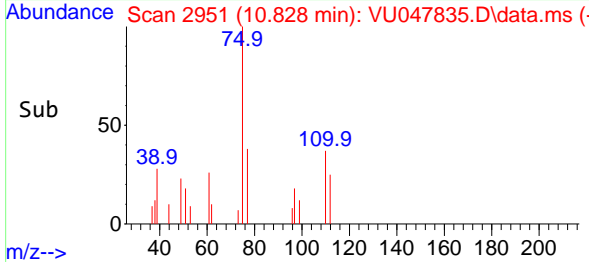
#71
 1,2,3-Trichloropropane
 Concen: 0.248 ug/l m
 RT: 10.828 min Scan# 2951
 Delta R.T. 0.000 min
 Lab File: VU047835.D
 Acq: 06 Apr 2022 17:58

Instrument : MSVOA_U
 ClientSampleId : MDL02 0.25ppb

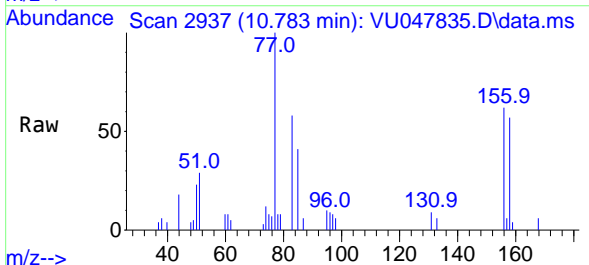


Tgt Ion: 75 Resp: 2509

Ion	Ratio	Lower	Upper
75	100		
77	19.4	0.0	92.6
110	33.0	0.0	68.2
97	9.8	0.0	36.8

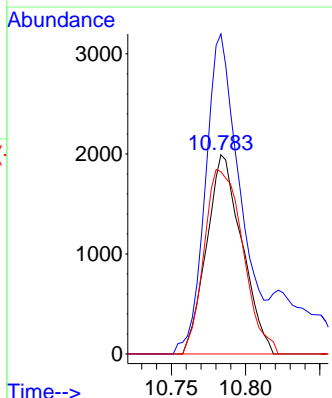
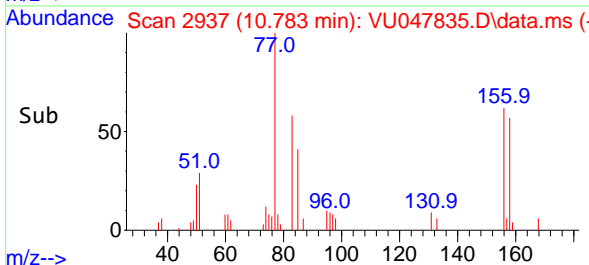


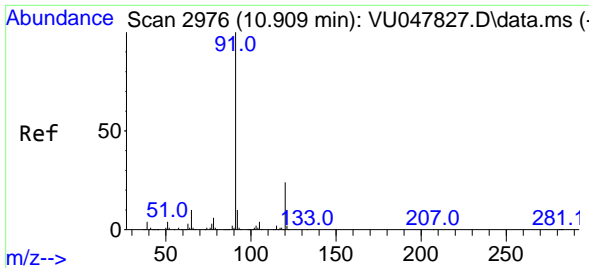
#72
 Bromobenzene
 Concen: 0.200 ug/l
 RT: 10.783 min Scan# 2937
 Delta R.T. 0.000 min
 Lab File: VU047835.D
 Acq: 06 Apr 2022 17:58



Tgt Ion: 156 Resp: 3296

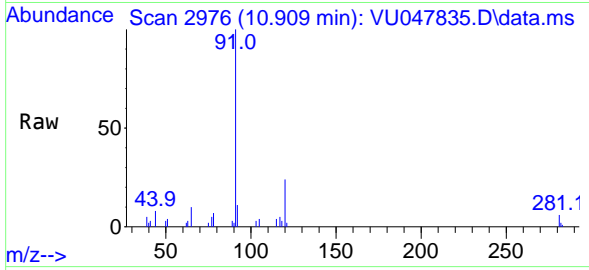
Ion	Ratio	Lower	Upper
156	100		
77	155.6	0.0	273.4
158	101.5	0.0	193.6



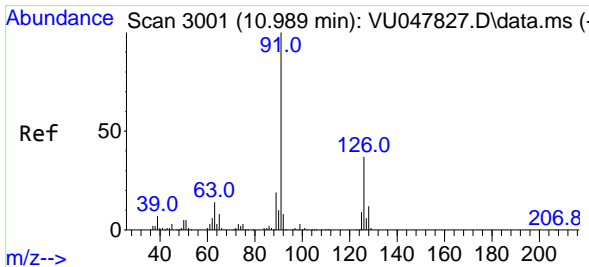
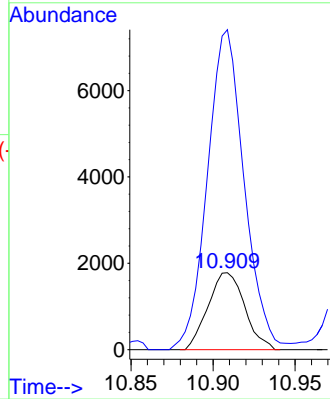
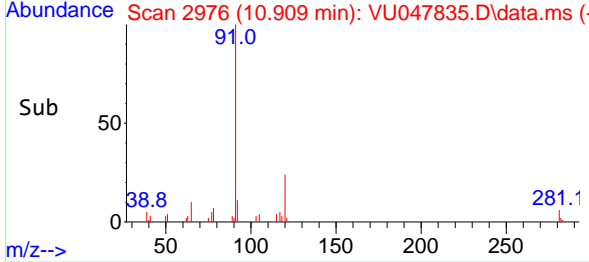


#73
 n-propylbenzene
 Concen: 0.177 ug/l
 RT: 10.909 min Scan# 2976
 Delta R.T. 0.000 min
 Lab File: VU047835.D
 Acq: 06 Apr 2022 17:58

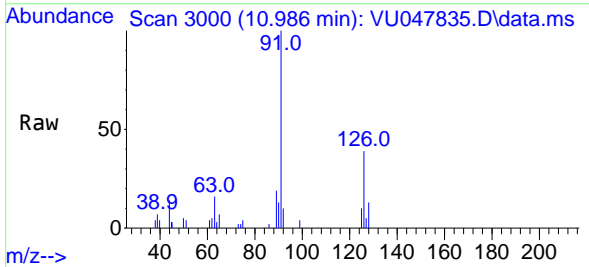
Instrument : MSVOA_U
 ClientSampleId : MDL02 0.25ppb



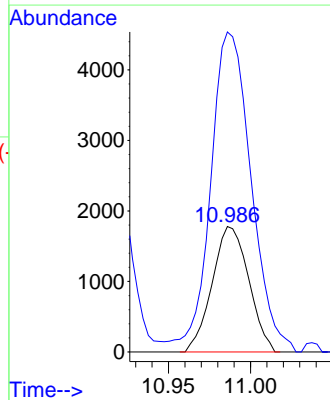
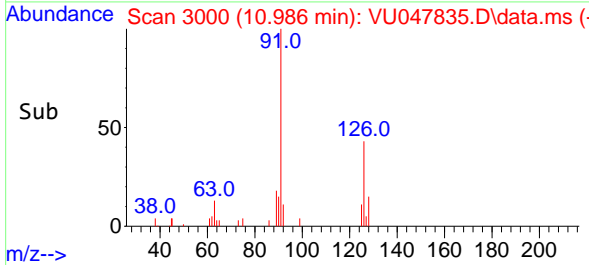
Tgt Ion:120 Resp: 2771
 Ion Ratio Lower Upper
 120 100
 91 416.3 333.7 500.5

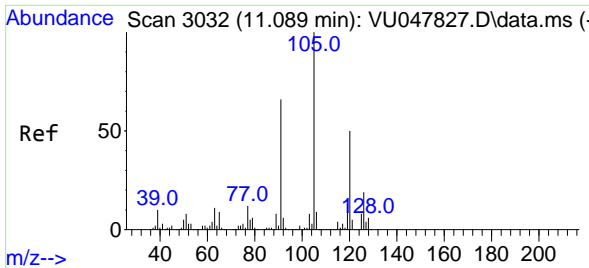


#74
 2-Chlorotoluene
 Concen: 0.185 ug/l
 RT: 10.986 min Scan# 3000
 Delta R.T. -0.003 min
 Lab File: VU047835.D
 Acq: 06 Apr 2022 17:58



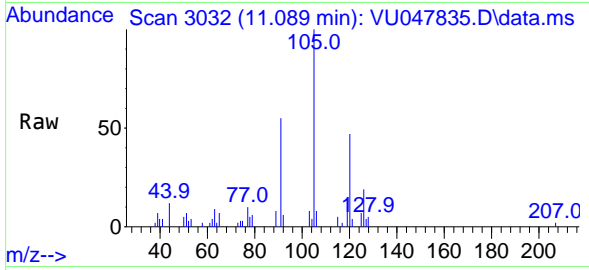
Tgt Ion:126 Resp: 2750
 Ion Ratio Lower Upper
 126 100
 91 282.4 0.0 554.6



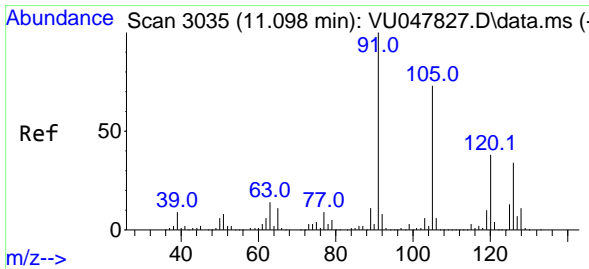
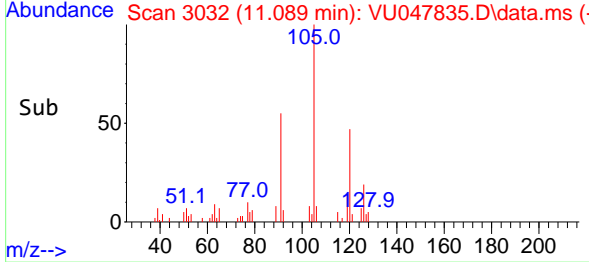
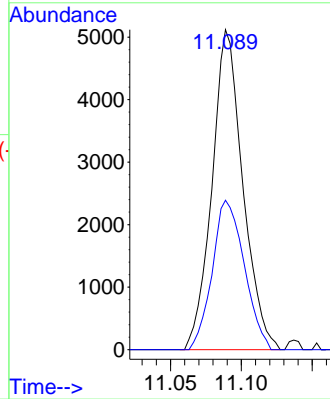


#75
 1,3,5-Trimethylbenzene
 Concen: 0.166 ug/l
 RT: 11.089 min Scan# 3032
 Delta R.T. 0.000 min
 Lab File: VU047835.D
 Acq: 06 Apr 2022 17:58

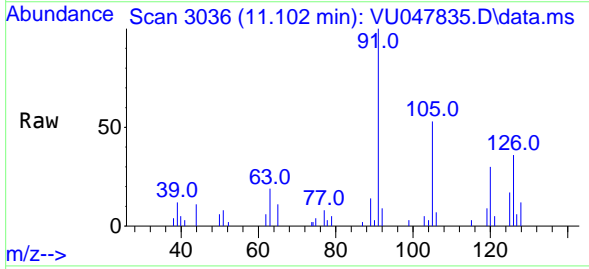
Instrument : MSVOA_U
 ClientSampleId : MDL02 0.25ppb



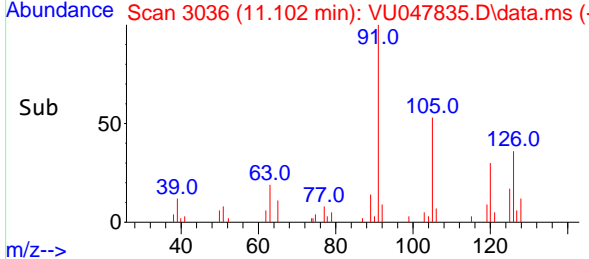
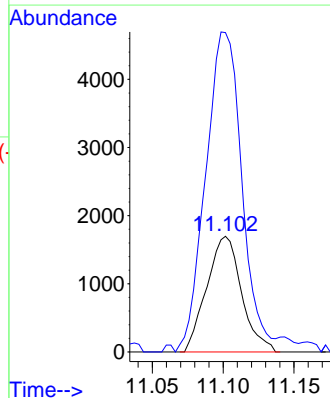
Tgt Ion:105 Resp: 7744
 Ion Ratio Lower Upper
 105 100
 120 48.4 40.6 61.0

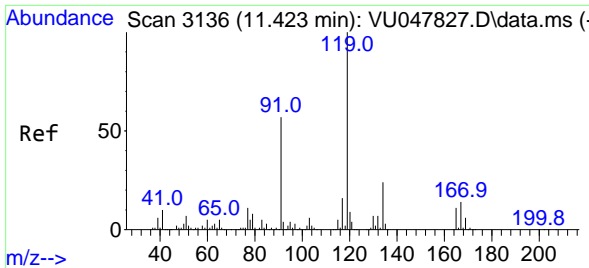


#76
 4-Chlorotoluene
 Concen: 0.185 ug/l
 RT: 11.102 min Scan# 3036
 Delta R.T. 0.003 min
 Lab File: VU047835.D
 Acq: 06 Apr 2022 17:58



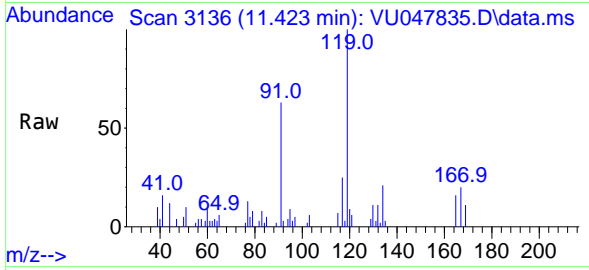
Tgt Ion:126 Resp: 2903
 Ion Ratio Lower Upper
 126 100
 91 287.7 0.0 616.4





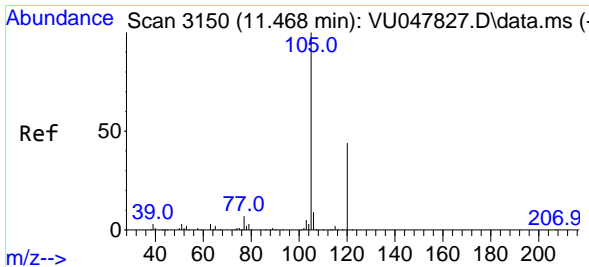
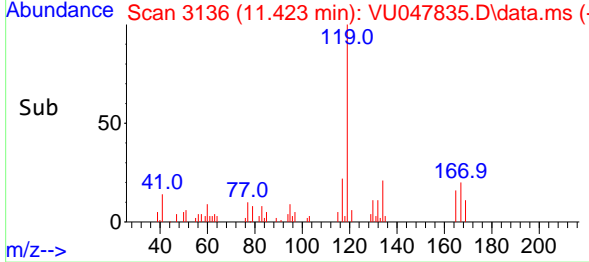
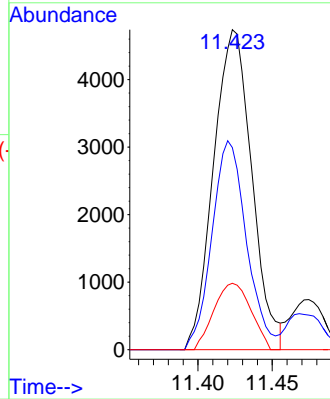
#77
 tert-Butylbenzene
 Concen: 0.180 ug/l
 RT: 11.423 min Scan# 3136
 Delta R.T. 0.000 min
 Lab File: VU047835.D
 Acq: 06 Apr 2022 17:58

Instrument : MSVOA_U
 ClientSampleId : VU047835.D
 MDL02 0.25ppb



Tgt Ion:119 Resp: 8494

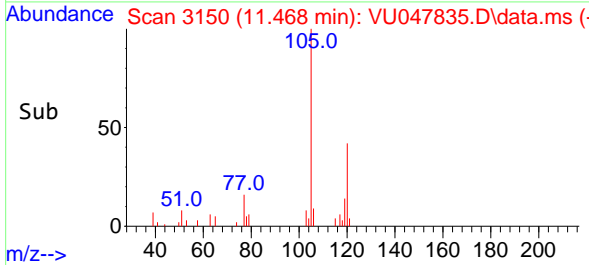
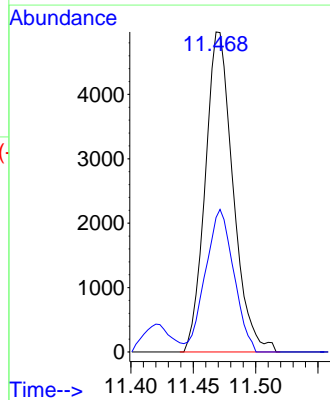
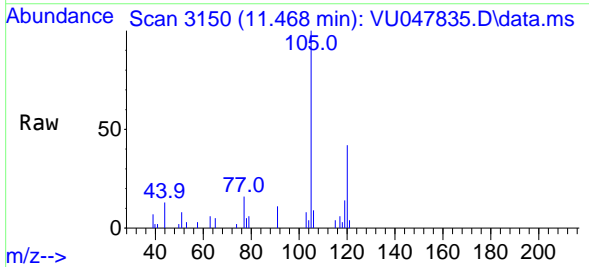
Ion	Ratio	Lower	Upper
119	100		
91	59.0	27.3	81.9
134	20.1	19.0	28.4

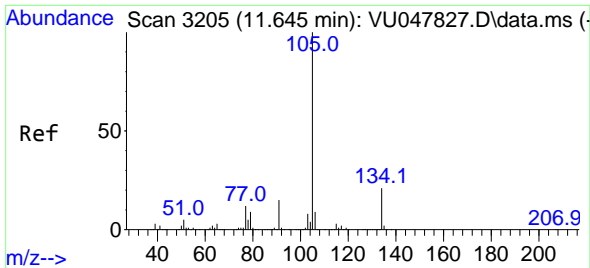


#78
 1,2,4-Trimethylbenzene
 Concen: 0.161 ug/l
 RT: 11.468 min Scan# 3150
 Delta R.T. 0.000 min
 Lab File: VU047835.D
 Acq: 06 Apr 2022 17:58

Tgt Ion:105 Resp: 7720

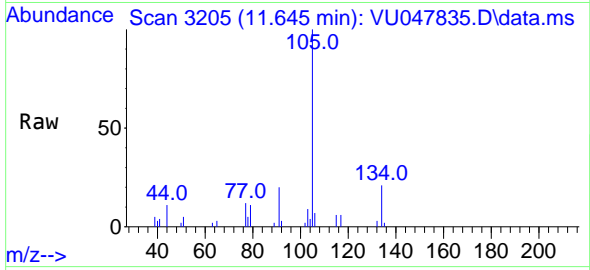
Ion	Ratio	Lower	Upper
105	100		
120	45.3	23.8	71.5



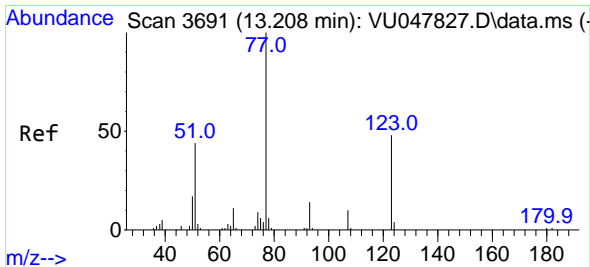
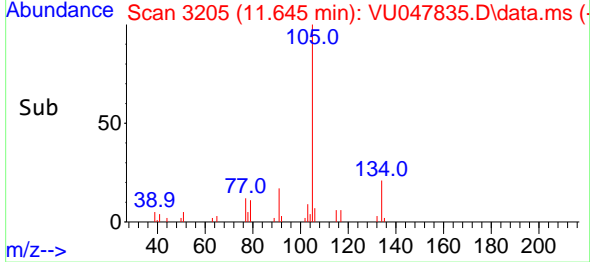
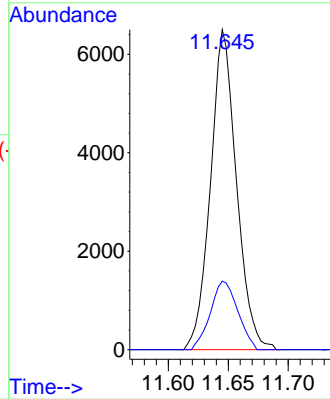


#79
 sec-Butylbenzene
 Concen: 0.158 ug/l
 RT: 11.645 min Scan# 3194
 Delta R.T. 0.000 min
 Lab File: VU047835.D
 Acq: 06 Apr 2022 17:58

Instrument : MSVOA_U
 ClientSampleId : MDL02 0.25ppb

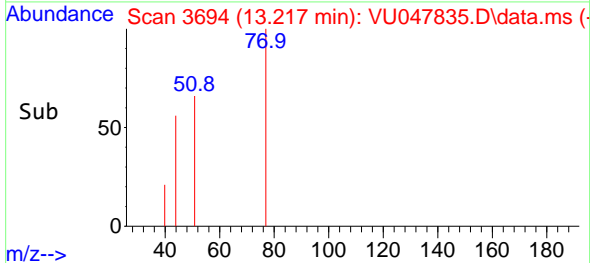
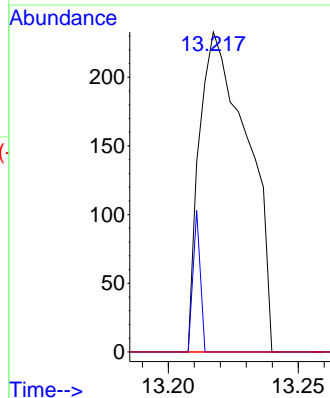
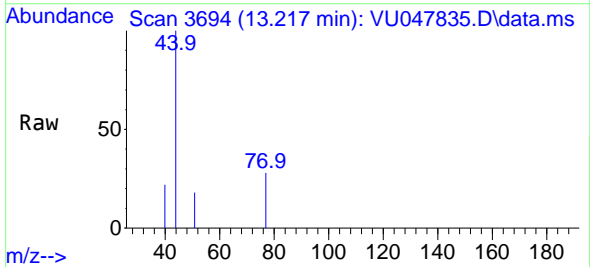


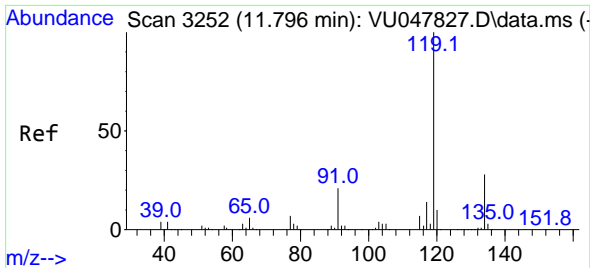
Tgt Ion:105 Resp: 9771
 Ion Ratio Lower Upper
 105 100
 134 22.6 16.7 25.1



#80
 Nitrobenzene
 Concen: 0.595 ug/l
 RT: 13.217 min Scan# 3694
 Delta R.T. 0.010 min
 Lab File: VU047835.D
 Acq: 06 Apr 2022 17:58

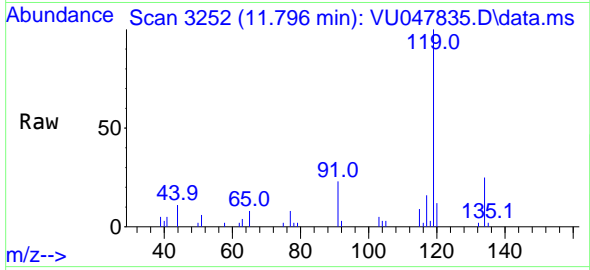
Tgt Ion: 77 Resp: 300
 Ion Ratio Lower Upper
 77 100
 123 6.7 20.6 73.0#
 65 0.0 10.4 13.2#





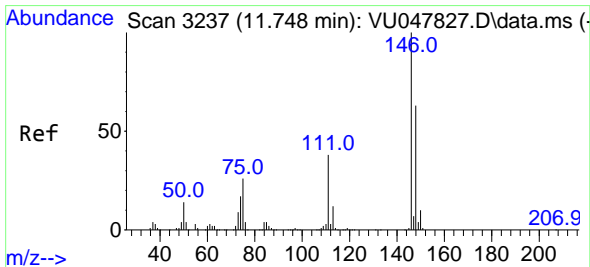
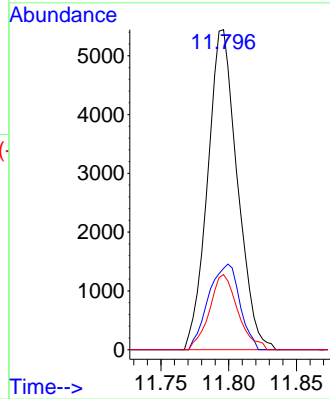
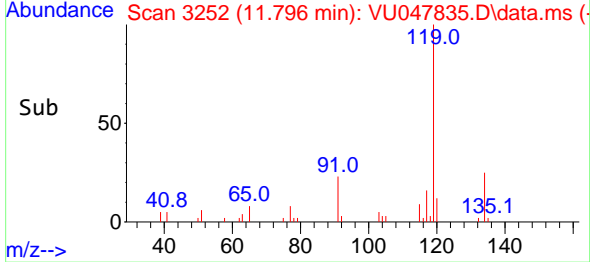
#81
 p-Isopropyltoluene
 Concen: 0.160 ug/l
 RT: 11.796 min Scan# 31
 Delta R.T. 0.000 min
 Lab File: VU047835.D
 Acq: 06 Apr 2022 17:58

Instrument :
 MSVOA_U
 ClientSampleId :
 MDL02 0.25ppb

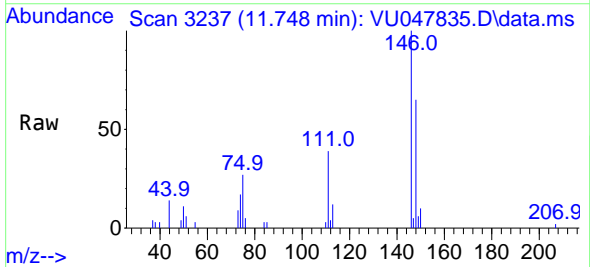


Tgt Ion:119 Resp: 8299

Ion	Ratio	Lower	Upper
119	100		
134	28.1	21.8	32.8
91	22.4	17.4	26.2

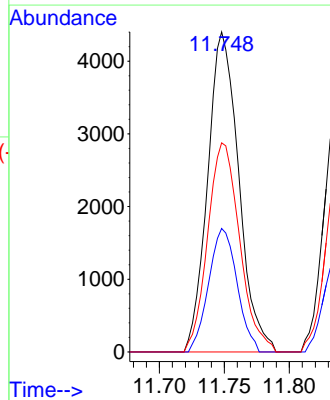
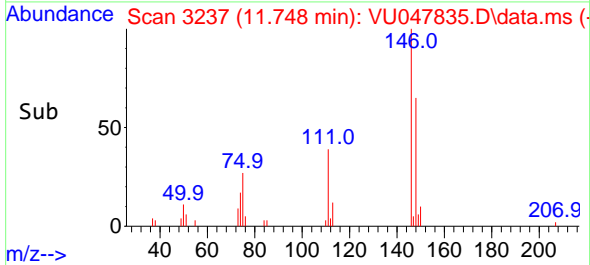


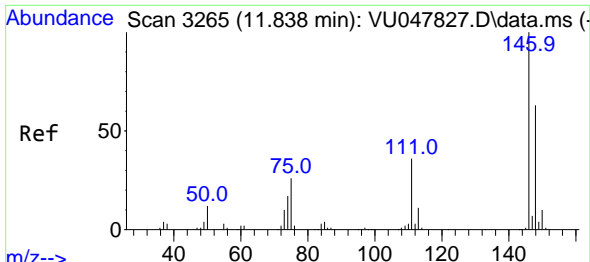
#82
 1,3-Dichlorobenzene
 Concen: 0.221 ug/l
 RT: 11.748 min Scan# 3237
 Delta R.T. 0.000 min
 Lab File: VU047835.D
 Acq: 06 Apr 2022 17:58



Tgt Ion:146 Resp: 7327

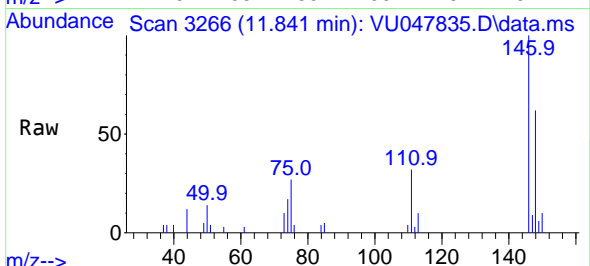
Ion	Ratio	Lower	Upper
146	100		
111	35.2	30.2	45.2
148	67.2	50.6	76.0



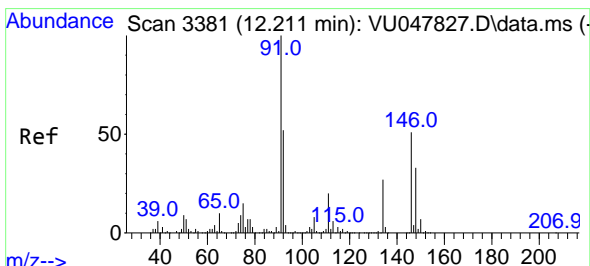
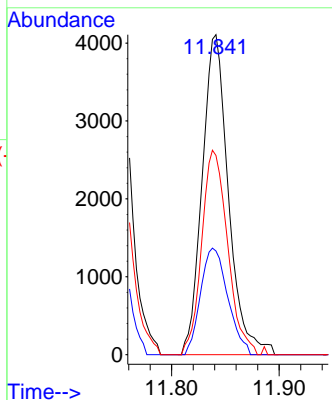
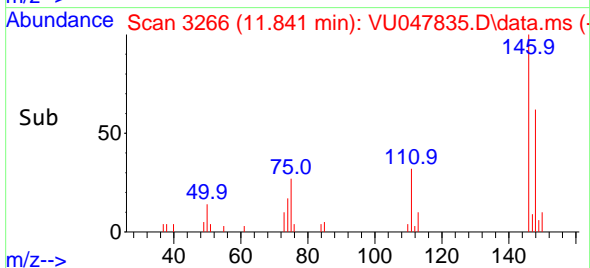


#83
 1,4-Dichlorobenzene
 Concen: 0.211 ug/l
 RT: 11.841 min Scan# 31
 Delta R.T. 0.003 min
 Lab File: VU047835.D
 Acq: 06 Apr 2022 17:58

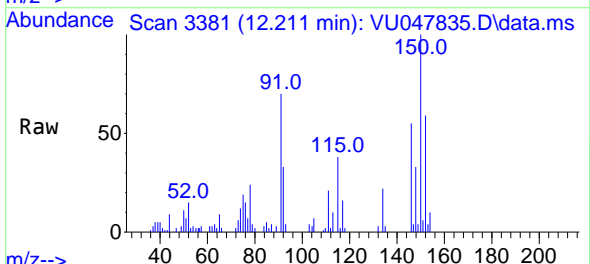
Instrument : MSVOA_U
 ClientSampleId : MDL02 0.25ppb



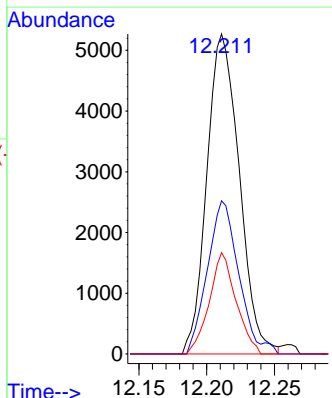
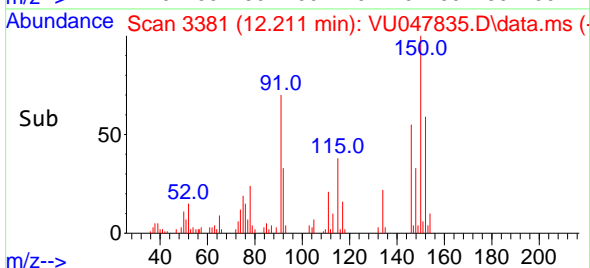
Tgt Ion:146 Resp: 6984
 Ion Ratio Lower Upper
 146 100
 111 34.4 28.7 43.1
 148 63.0 50.8 76.2

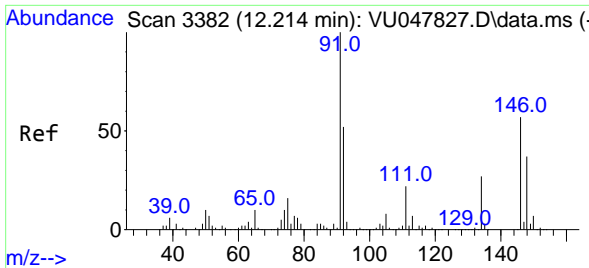


#84
 n-Butylbenzene
 Concen: 0.178 ug/l
 RT: 12.211 min Scan# 3381
 Delta R.T. 0.000 min
 Lab File: VU047835.D
 Acq: 06 Apr 2022 17:58



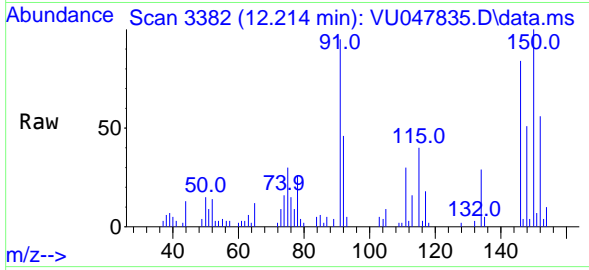
Tgt Ion: 91 Resp: 8777
 Ion Ratio Lower Upper
 91 100
 92 46.3 41.8 62.6
 134 26.1 21.4 32.2





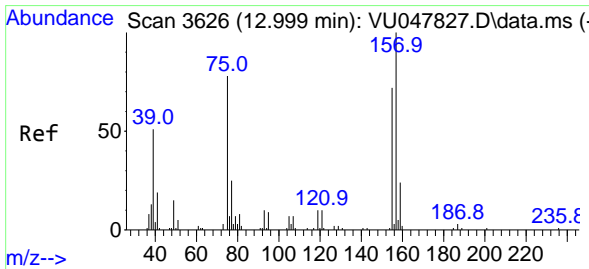
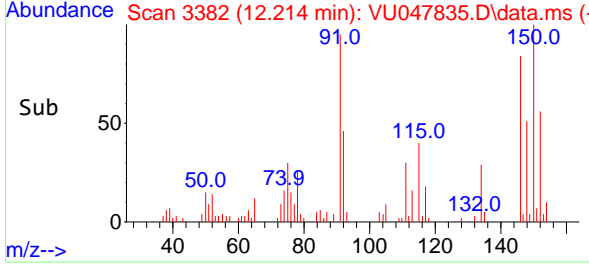
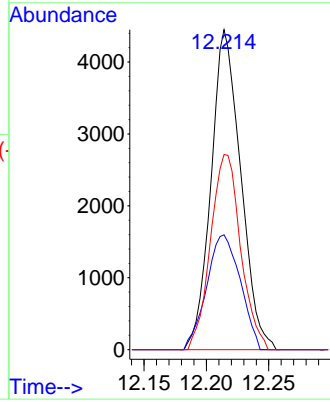
#85
 1,2-Dichlorobenzene
 Concen: 0.235 ug/l
 RT: 12.214 min Scan# 311
 Delta R.T. 0.000 min
 Lab File: VU047835.D
 Acq: 06 Apr 2022 17:58

Instrument : MSVOA_U
 ClientSampleId : MDL02 0.25ppb



Tgt Ion:146 Resp: 7373

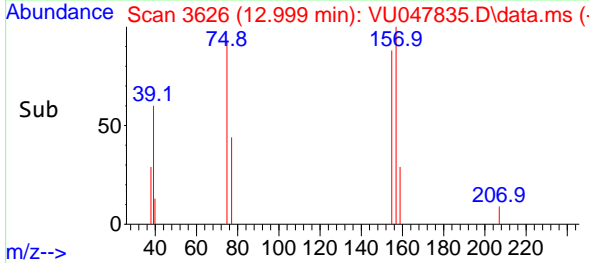
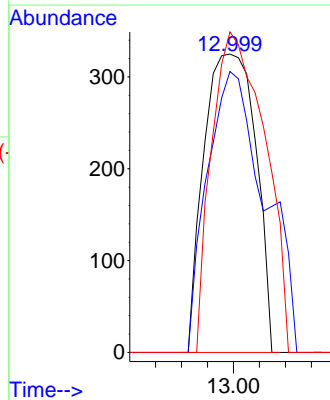
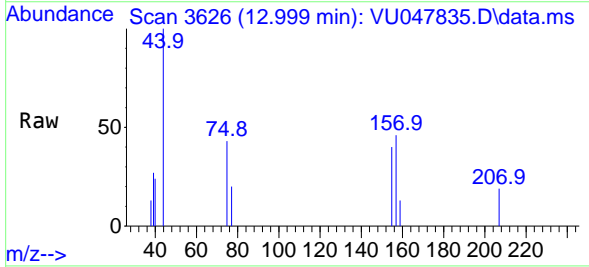
Ion	Ratio	Lower	Upper
146	100		
111	40.7	19.4	58.2
148	61.9	32.3	96.8

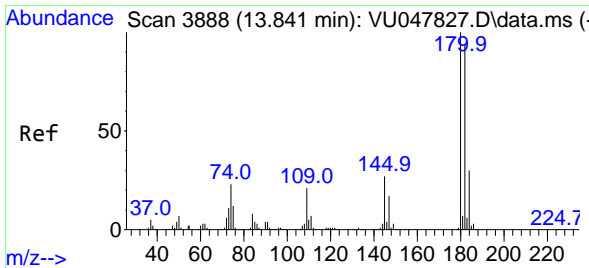


#86
 1,2-Dibromo-3-Chloropropane
 Concen: 0.212 ug/l
 RT: 12.999 min Scan# 3626
 Delta R.T. 0.000 min
 Lab File: VU047835.D
 Acq: 06 Apr 2022 17:58

Tgt Ion: 75 Resp: 449

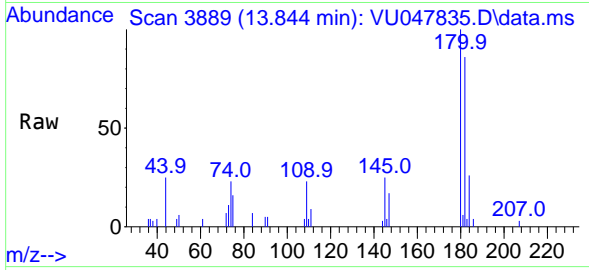
Ion	Ratio	Lower	Upper
75	100		
155	104.9	76.2	114.2
157	110.2	99.1	148.7



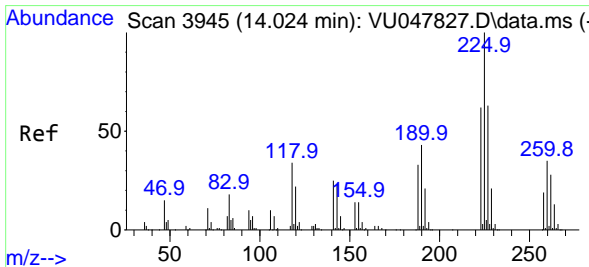
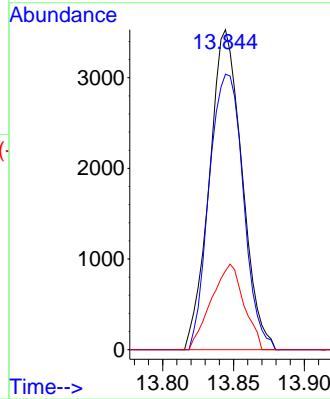
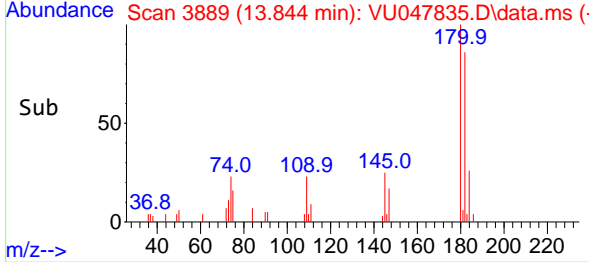


#87
 1,2,4-Trichlorobenzene
 Concen: 0.247 ug/l
 RT: 13.844 min Scan# 3889
 Delta R.T. 0.003 min
 Lab File: VU047835.D
 Acq: 06 Apr 2022 17:58

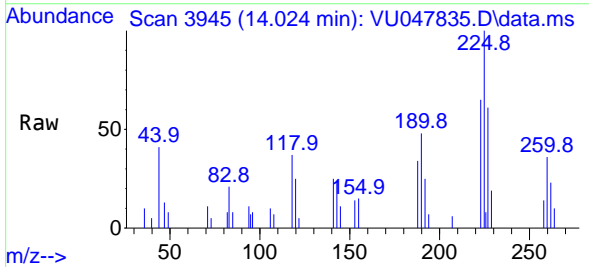
Instrument : MSVOA_U
 ClientSampleId : MDL02 0.25ppb



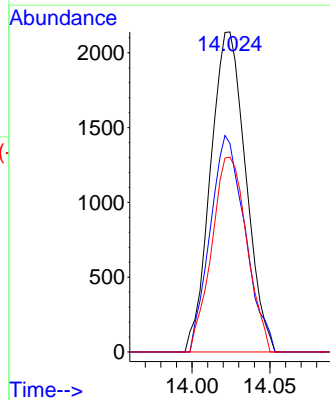
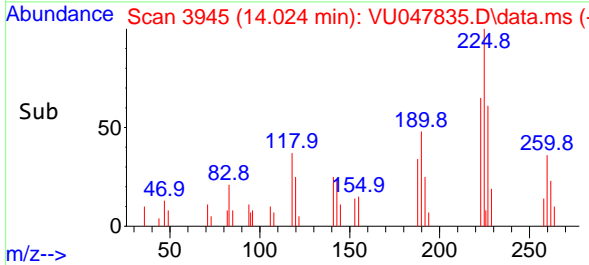
Tgt Ion:180 Resp: 5651
 Ion Ratio Lower Upper
 180 100
 182 89.8 75.8 113.6
 145 26.7 21.7 32.5

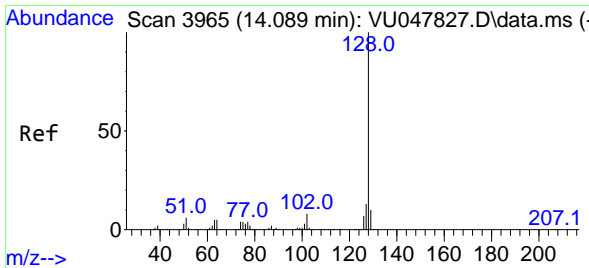


#88
 Hexachlorobutadiene
 Concen: 0.248 ug/l
 RT: 14.024 min Scan# 3945
 Delta R.T. 0.000 min
 Lab File: VU047835.D
 Acq: 06 Apr 2022 17:58



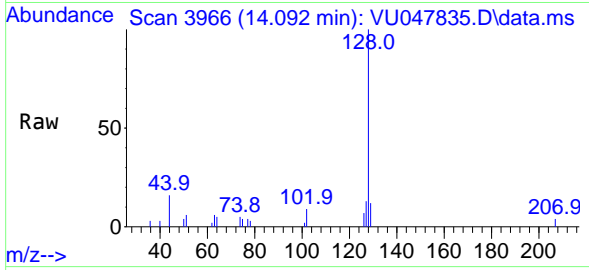
Tgt Ion:225 Resp: 3361
 Ion Ratio Lower Upper
 225 100
 223 67.2 50.0 75.0
 227 60.8 51.0 76.6





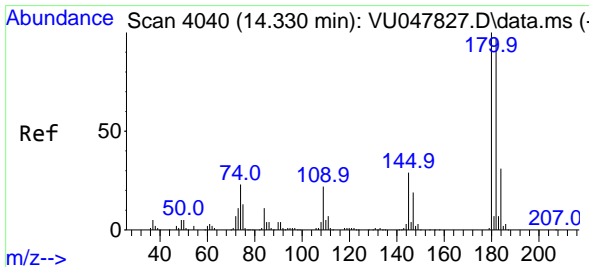
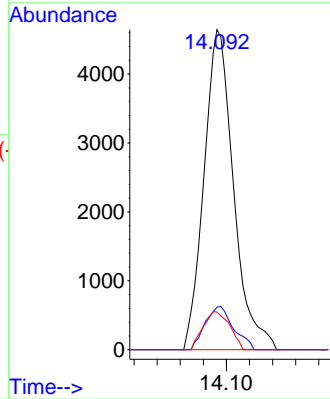
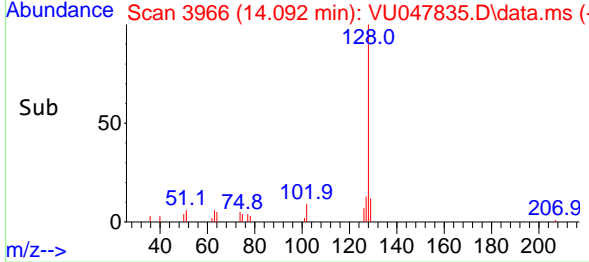
#89
 Naphthalene
 Concen: 0.221 ug/l
 RT: 14.092 min Scan# 3966
 Delta R.T. 0.003 min
 Lab File: VU047835.D
 Acq: 06 Apr 2022 17:58

Instrument : MSVOA_U
 ClientSampleId : VU047835.D
 MDL02 0.25ppb

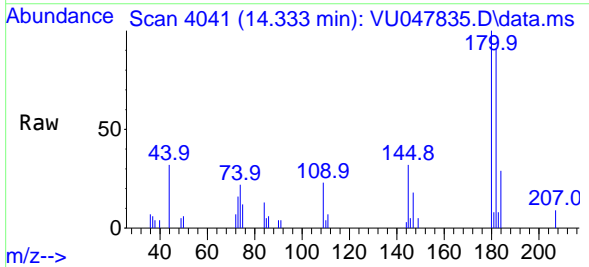


Tgt Ion:128 Resp: 8240

Ion	Ratio	Lower	Upper
128	100		
127	13.0	10.2	15.4
129	10.7	8.6	12.8



#90
 1,2,3-Trichlorobenzene
 Concen: 0.233 ug/l
 RT: 14.333 min Scan# 4041
 Delta R.T. 0.003 min
 Lab File: VU047835.D
 Acq: 06 Apr 2022 17:58



Tgt Ion:180 Resp: 4934

Ion	Ratio	Lower	Upper
180	100		
182	94.7	77.2	115.8
145	29.9	23.3	34.9

