

Data File : VU030837.D  
 Acq On : 07 Apr 2019 05:42  
 Operator : JC/SP  
 Sample : K2299-09  
 Misc : 5.0mL/MSVOA\_U/WATER  
 ALS Vial : 47 Sample Multiplier: 1

Instrument :  
 MSVOA\_U  
 ClientSampled :  
 DB6Y6

Quant Time: Apr 08 07:10:47 2019  
 Quant Method : Z:\VOASRV\HPCHEM1\MSVOA\_U\METHOD\SOMULM040519WMA.M  
 Quant Title : VOC Analysis  
 QLast Update : Mon Apr 08 07:03:53 2019  
 Response via : Initial Calibration

Internal Standards	R.T.	QIon	Response	Conc	Units	Dev(Min)
1) 1,4-Difluorobenzene	5.88	114	454269	50.00	ug/L	0.00
28) Chlorobenzene-d5	9.09	117	455684	50.00	ug/L	0.00
60) 1,4-Dichlorobenzene-d4	11.48	152	185223	50.00	ug/L	0.00

System Monitoring Compounds

4) Vinyl Chloride-d3	1.40	65	207679	51.21	ug/L	0.00
Spiked Amount	50.000	Range	60 - 135	Recovery	=	102.42%
7) Chloroethane-d5	1.68	69	164256	53.37	ug/L	0.00
Spiked Amount	50.000	Range	70 - 130	Recovery	=	106.74%
11) 1,1-Dichloroethene-d2	2.27	63	287730	39.23	ug/L	0.00
Spiked Amount	50.000	Range	60 - 125	Recovery	=	78.46%
21) 2-Butanone-d5	4.17	46	326226	101.50	ug/L	0.00
Spiked Amount	100.000	Range	40 - 130	Recovery	=	101.50%
24) Chloroform-d	4.64	84	305455	49.31	ug/L	0.00
Spiked Amount	50.000	Range	70 - 125	Recovery	=	98.62%
26) 1,2-Dichloroethane-d4	5.31	65	220844	52.25	ug/L	0.00
Spiked Amount	50.000	Range	70 - 125	Recovery	=	104.50%
32) Benzene-d6	5.33	84	654322	49.19	ug/L	0.00
Spiked Amount	50.000	Range	70 - 125	Recovery	=	98.38%
36) 1,2-Dichloropropane-d6	6.33	67	225635	49.49	ug/L	0.00
Spiked Amount	50.000	Range	70 - 120	Recovery	=	98.98%
41) Toluene-d8	7.56	98	558493	47.37	ug/L	0.00
Spiked Amount	50.000	Range	80 - 120	Recovery	=	94.74%
43) trans-1,3-Dichloropropene-	7.85	79	88516	42.58	ug/L	0.00
Spiked Amount	50.000	Range	60 - 125	Recovery	=	85.16%
47) 2-Hexanone-d5	8.31	63	191725	92.01	ug/L	0.00
Spiked Amount	100.000	Range	45 - 130	Recovery	=	92.01%
57) 1,1,2,2-Tetrachloroethane-	10.43	84	298635	48.56	ug/L	0.00
Spiked Amount	50.000	Range	65 - 120	Recovery	=	97.12%
64) 1,2-Dichlorobenzene-d4	11.86	152	187220	51.40	ug/L	0.00
Spiked Amount	50.000	Range	80 - 120	Recovery	=	102.80%

Target Compounds

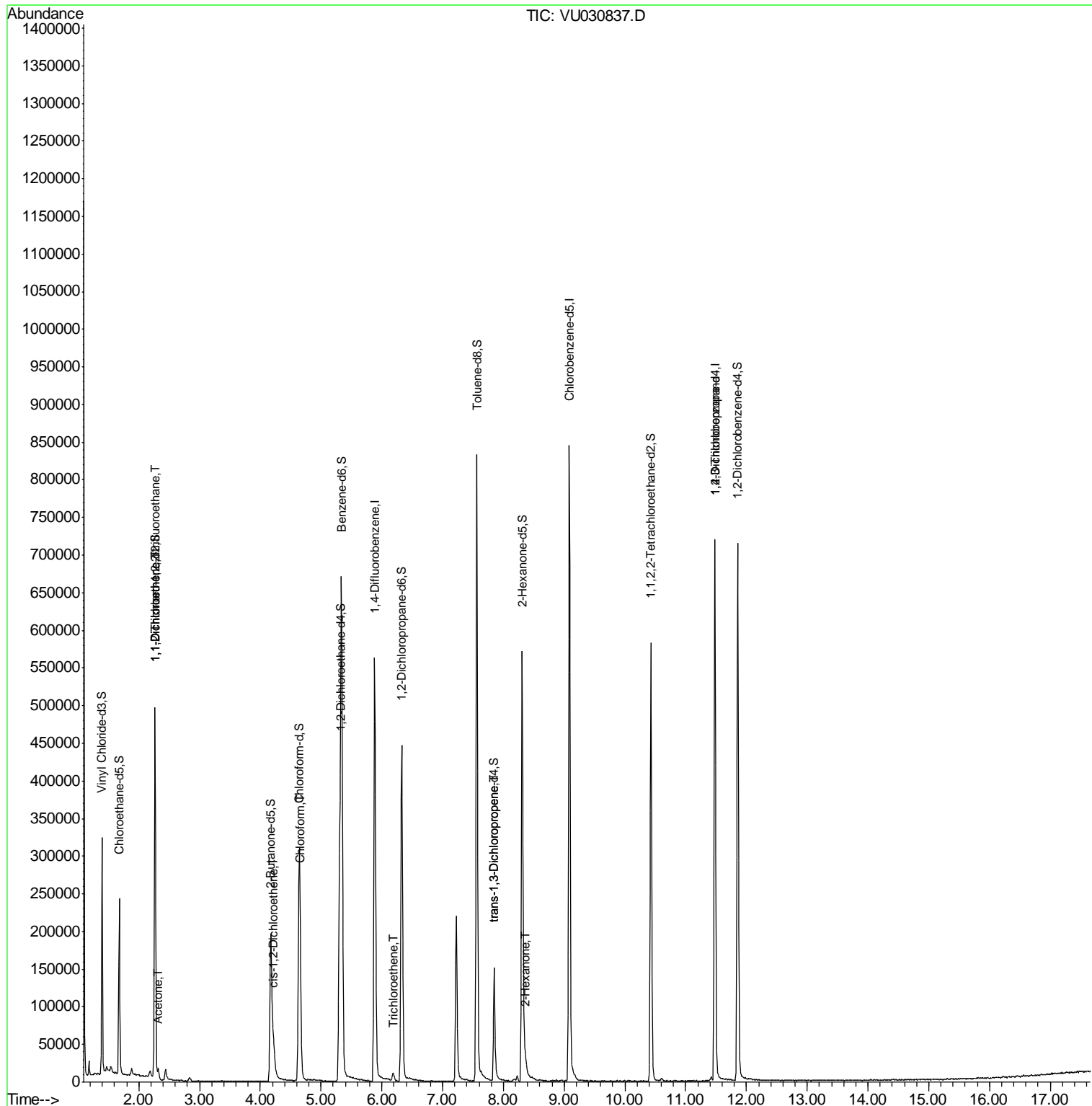
Target Compounds	R.T.	QIon	Response	Conc	Units	Qvalue
10) 1,1,2-Trichloro-1,2,2-trif	2.27	101	2434	0.748	ug/L #	20
12) 1,1-Dichloroethene	2.27	96	2249	0.716	ug/L #	1
13) Acetone	2.32	43	11972	3.640	ug/L	97
20) cis-1,2-Dichloroethene	4.22	96	14128	3.838	ug/L	98
25) Chloroform	4.67	83	23342	3.375	ug/L	99
34) Trichloroethene	6.18	95	4137	1.131	ug/L #	81
44) trans-1,3-Dichloropropene	7.85	75	3579	0.676	ug/L #	53
48) 2-Hexanone	8.37	43	6977	1.317	ug/L #	43
59) 1,2,3-Trichloropropane	11.48	75	23855	4.717	ug/L	89

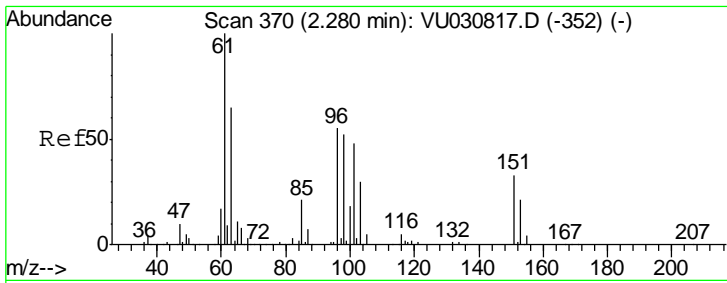
(#) = qualifier out of range (m) = manual integration (+) = signals summed

Data File : VU030837.D  
Acq On : 07 Apr 2019 05:42  
Operator : JC/SP  
Sample : K2299-09  
Misc : 5.0mL/MSVOA\_U/WATER  
ALS Vial : 47 Sample Multiplier: 1

Instrument :  
MSVOA\_U  
ClientSampled :  
DB6Y6

Quant Time: Apr 08 07:10:47 2019  
Quant Method : Z:\VOASRV\HPCHEM1\MSVOA\_U\METHOD\SOMULM040519WMA.M  
Quant Title : VOC Analysis  
QLast Update : Mon Apr 08 07:03:53 2019  
Response via : Initial Calibration

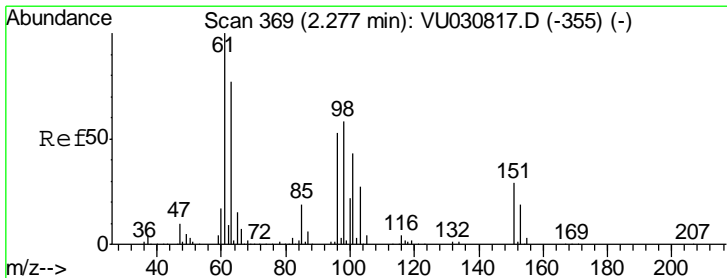
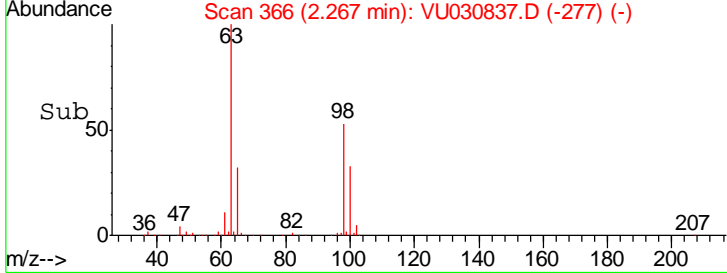
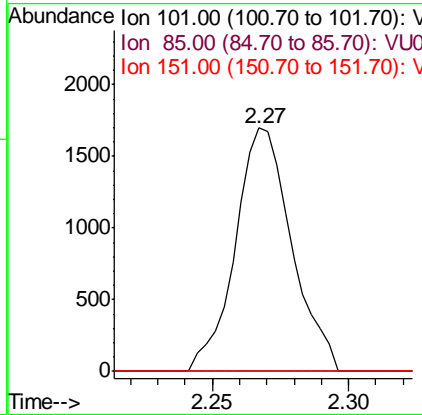
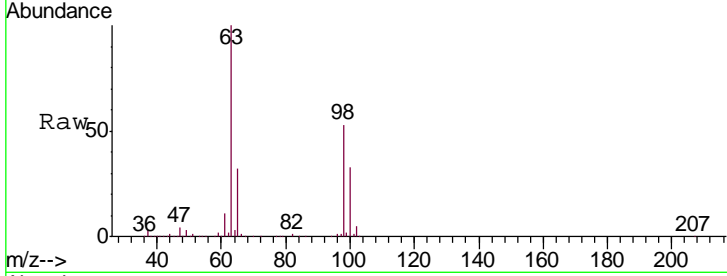




#10  
 1,1,2-Trichloro-1,2,2-trifluoroethane  
 Concen: 0.748 ug/L  
 RT: 2.27 min Scan# 366  
 Delta R.T. -0.01 min  
 Lab File: VU030837.D  
 Acq: 07 Apr 2019 05:42

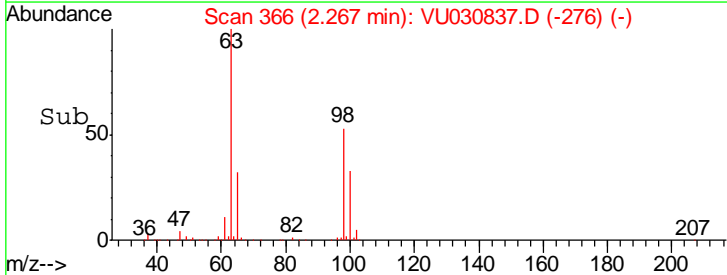
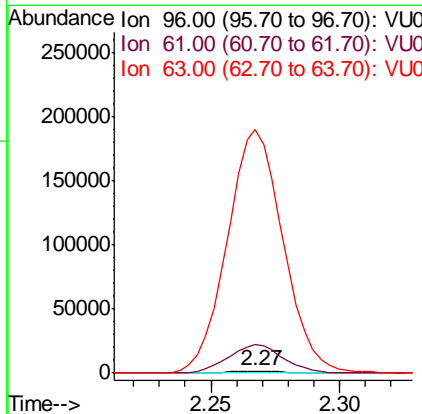
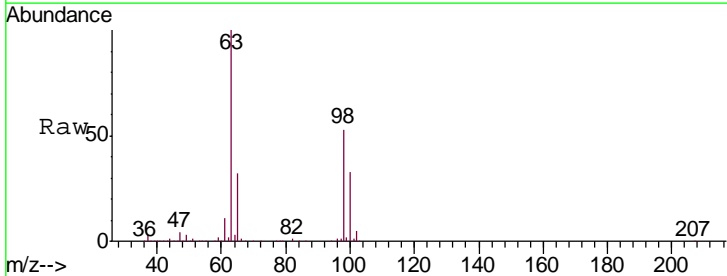
Instrument :  
 MSVOA\_U  
 ClientSampled :  
 DB6Y6

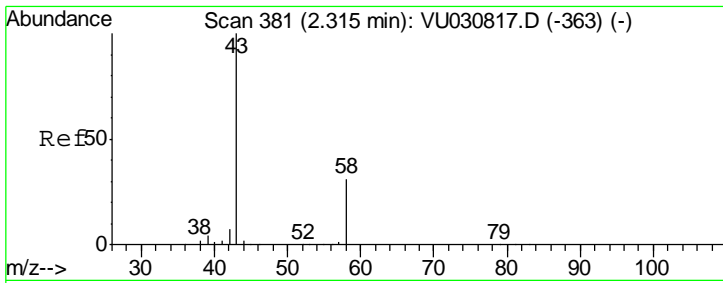
Tgt Ion	Resp	Lower	Upper
101	100		
85	0.0	36.8	55.2#
151	0.0	57.4	86.0#



#12  
 1,1-Dichloroethene  
 Concen: 0.716 ug/L  
 RT: 2.27 min Scan# 366  
 Delta R.T. -0.01 min  
 Lab File: VU030837.D  
 Acq: 07 Apr 2019 05:42

Tgt Ion	Resp	Lower	Upper
96	100		
61	1650.9	132.0	245.2#
63	14374.6	90.9	168.9#

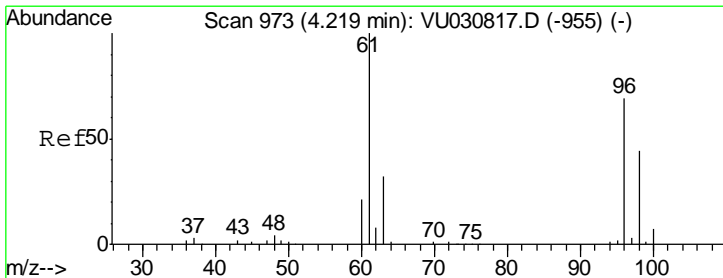
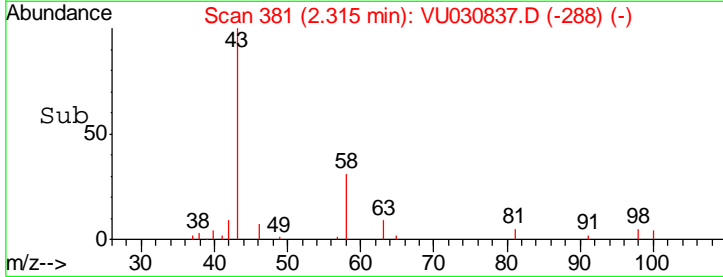
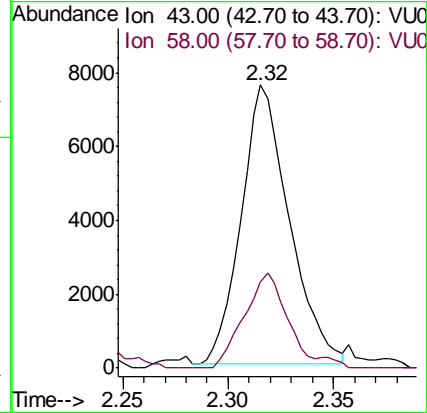
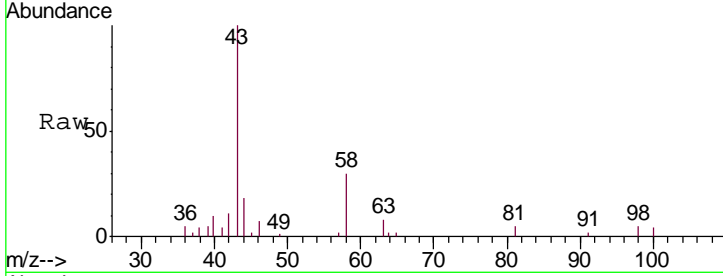




#13  
 Acetone  
 Concen: 3.640 ug/L  
 RT: 2.32 min Scan# 381  
 Delta R.T. 0.00 min  
 Lab File: VU030837.D  
 Acq: 07 Apr 2019 05:42

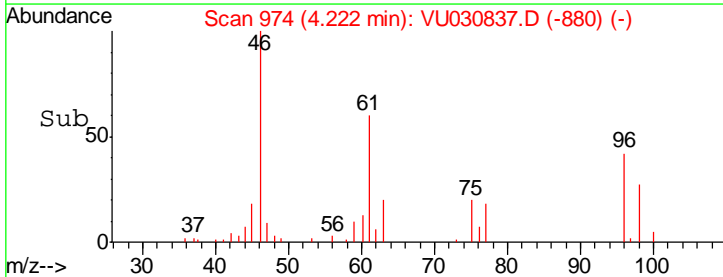
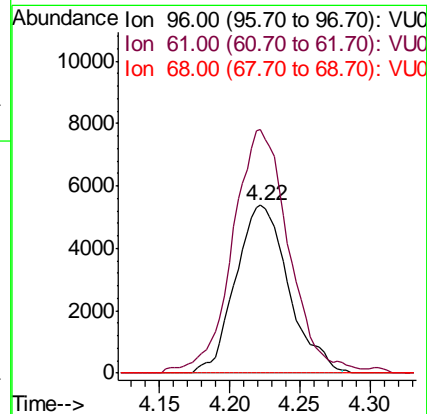
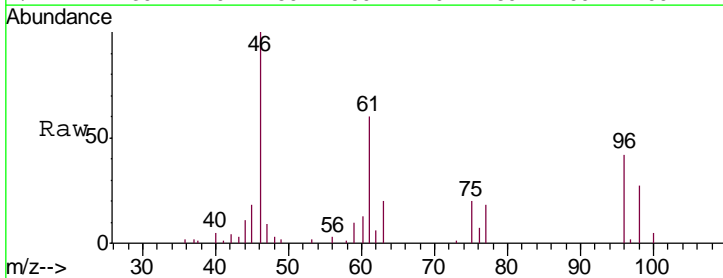
Instrument :  
 MSVOA\_U  
 ClientSampled :  
 DB6Y6

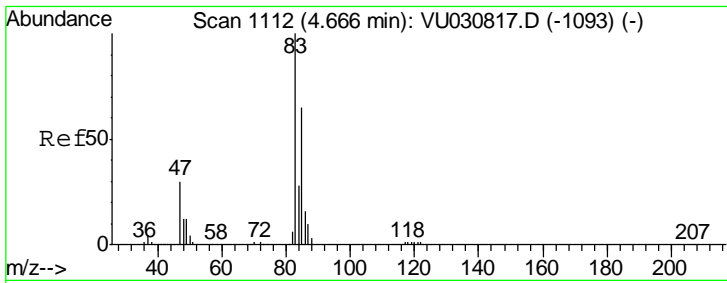
Tgt Ion: 43 Resp: 11972  
 Ion Ratio Lower Upper  
 43 100  
 58 30.2 0.0 64.0



#20  
 cis-1,2-Dichloroethene  
 Concen: 3.838 ug/L  
 RT: 4.22 min Scan# 974  
 Delta R.T. 0.00 min  
 Lab File: VU030837.D  
 Acq: 07 Apr 2019 05:42

Tgt Ion: 96 Resp: 14128  
 Ion Ratio Lower Upper  
 96 100  
 61 145.1 102.9 191.1  
 68 0.0 0.0 0.0

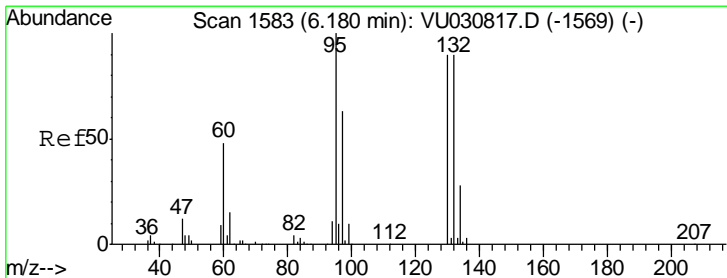
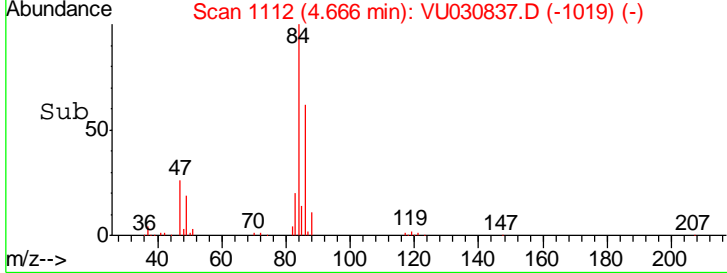
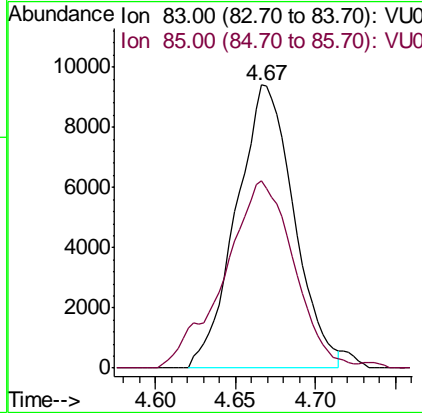
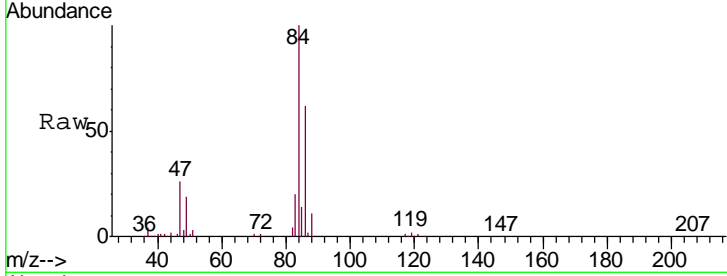




#25  
 Chloroform  
 Concen: 3.375 ug/L  
 RT: 4.67 min Scan# 1112  
 Delta R.T. 0.00 min  
 Lab File: VU030837.D  
 Acq: 07 Apr 2019 05:42

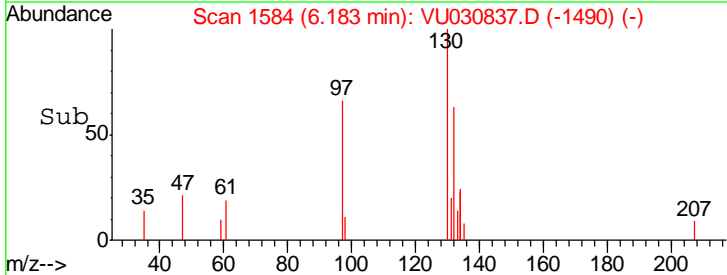
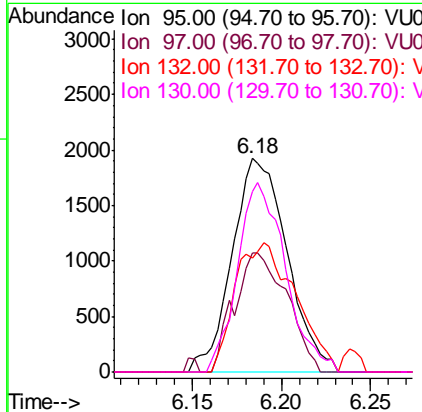
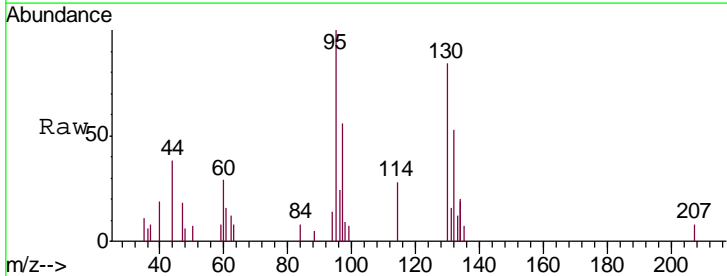
Instrument : MSVOA\_U  
 ClientSampleID : DB6Y6

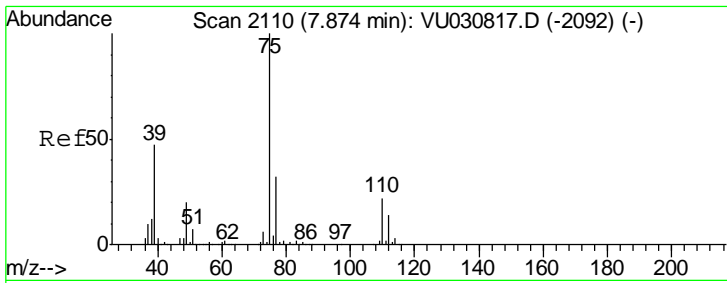
Tgt Ion	Resp	Lower	Upper
83	100		
85	66.4	45.8	85.0



#34  
 Trichloroethene  
 Concen: 1.131 ug/L  
 RT: 6.18 min Scan# 1584  
 Delta R.T. 0.00 min  
 Lab File: VU030837.D  
 Acq: 07 Apr 2019 05:42

Tgt Ion	Resp	Lower	Upper
95	100		
97	55.8	44.5	82.7
132	53.3	61.5	114.1#
130	84.3	64.9	120.5

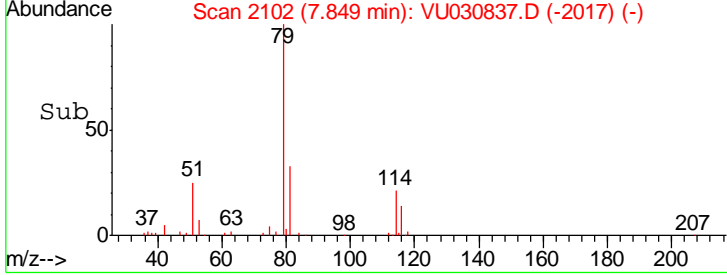
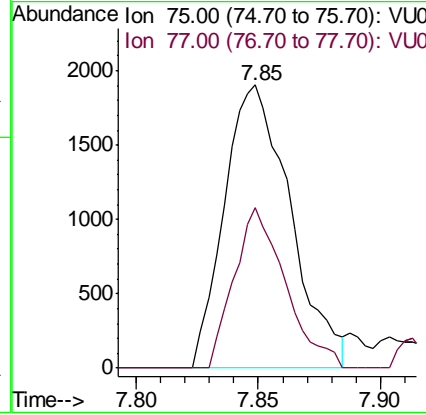
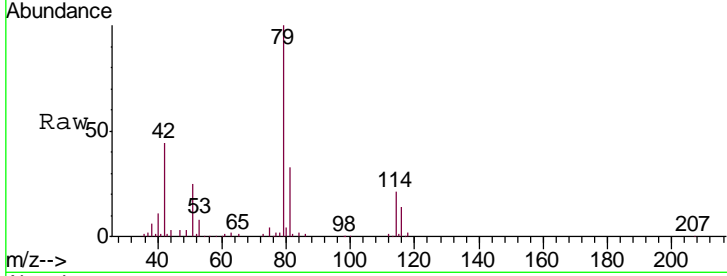




#44  
 trans-1,3-Dichloropropene  
 Concen: 0.676 ug/L  
 RT: 7.85 min Scan# 2102  
 Delta R.T. -0.03 min  
 Lab File: VU030837.D  
 Acq: 07 Apr 2019 05:42

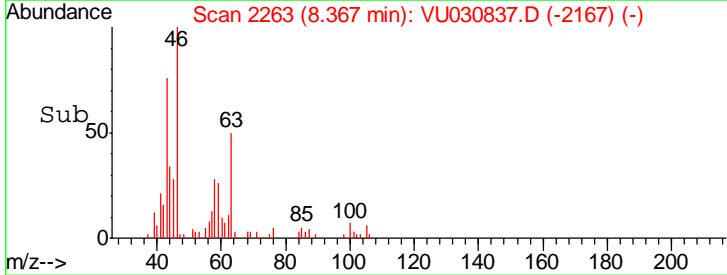
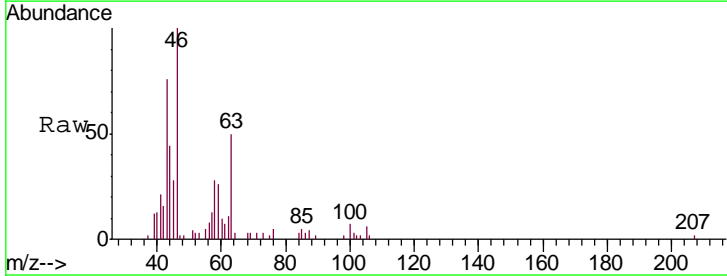
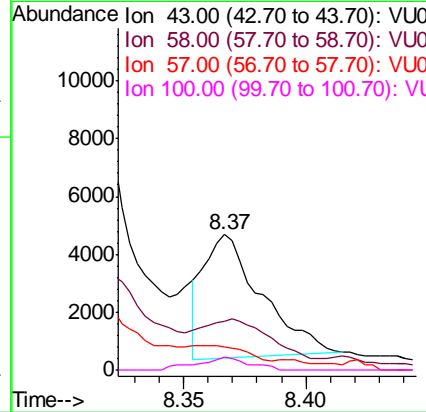
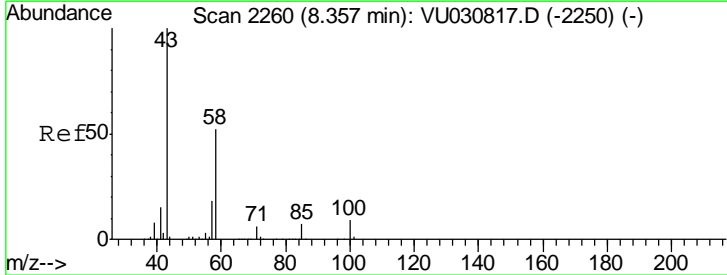
Instrument : MSVOA\_U  
 ClientSampled : DB6Y6

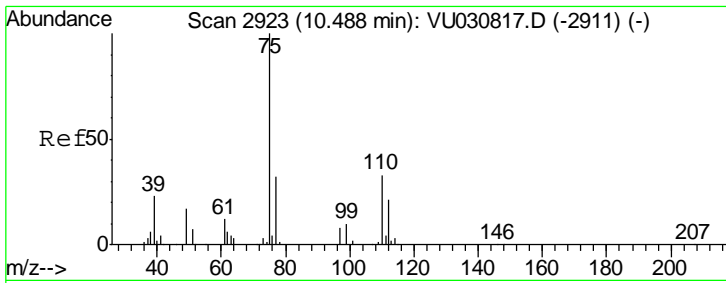
Tgt Ion: 75 Resp: 3579  
 Ion Ratio Lower Upper  
 75 100  
 77 56.5 21.6 40.0#



#48  
 2-Hexanone  
 Concen: 1.317 ug/L  
 RT: 8.37 min Scan# 2263  
 Delta R.T. 0.01 min  
 Lab File: VU030837.D  
 Acq: 07 Apr 2019 05:42

Tgt Ion: 43 Resp: 6977  
 Ion Ratio Lower Upper  
 43 100  
 58 0.0 41.9 62.9#  
 57 2.8 14.3 21.5#  
 100 7.8 7.1 10.7





#59  
 1,2,3-Trichloropropane  
 Concen: 4.717 ug/L  
 RT: 11.48 min Scan# 3231  
 Delta R.T. 0.99 min  
 Lab File: VU030837.D  
 Acq: 07 Apr 2019 05:42

Instrument : MSVOA\_U  
 ClientSampled : DB6Y6

Tgt Ion: 75 Resp: 23855  
 Ion Ratio Lower Upper  
 75 100  
 77 38.6 26.1 39.1

