

Data Path : Z:\VOASRV\HPCHEM1\MSVOA U\DATA\VU040719\  
 Data File : VU030824.D  
 Acq On : 07 Apr 2019 00:44  
 Operator : JC/SP  
 Sample : K2277-16  
 Misc : 5.0mL/MSVOA U/WATER  
 ALS Vial : 34 Sample Multiplier: 1

Instrument :  
 MSVOA\_U  
 ClientSampled :  
 BF1C2

## Integration Parameters: LSCINT.P

Integrator: RTE  
 Smoothing : OFF  
 Sampling : 1  
 Start Thrs: 0.2  
 Stop Thrs : 0

Filtering: 5  
 Min Area: 0 % of largest Peak  
 Max Peaks: 100  
 Peak Location: TOP

If leading or trailing edge < 100 prefer < Baseline drop else tangent >  
 Peak separation: 5

Method : Z:\VOASRV\HPCHEM1\MSVOA\_U\METHOD\SOMULM040519WMA.M  
 Title : VOC Analysis

Signal : TIC

peak #	R.T. min	first scan	max scan	last scan	PK TY	peak height	corr. area	corr. % max.	% of total
1	1.180	23	28	35	rBV3	15857	15138	0.75%	0.099%
2	1.325	69	73	82	rVB	11117	10307	0.51%	0.067%
3	1.395	88	95	108	rBV	327751	344302	16.96%	2.245%
4	1.675	174	182	197	rVB	243794	306780	15.11%	2.000%
5	2.267	355	366	378	rBV	500819	751363	37.01%	4.898%
6	2.440	406	420	436	rBV2	64974	121711	5.99%	0.793%
7	2.601	466	470	474	rVB6	969	835	0.04%	0.005%
8	2.698	493	500	510	rVB5	4652	7377	0.36%	0.048%
9	2.807	529	534	535	rBV2	1660	1190	0.06%	0.008%
10	2.987	586	590	593	rBV2	638	449	0.02%	0.003%
11	3.035	599	605	609	rBV5	890	1079	0.05%	0.007%
12	3.106	625	627	631	rVB	701	413	0.02%	0.003%
13	3.132	631	635	637	rBV	641	593	0.03%	0.004%
14	3.190	642	653	656	rBV5	2840	4705	0.23%	0.031%
15	3.334	695	698	703	rBV4	1136	892	0.04%	0.006%
16	3.514	751	754	760	rBV4	873	902	0.04%	0.006%
17	3.752	824	828	833	rBV2	451	439	0.02%	0.003%
18	3.778	833	836	839	rVV2	852	475	0.02%	0.003%
19	3.833	851	853	856	rBV	565	413	0.02%	0.003%
20	3.932	881	884	890	rVB3	725	656	0.03%	0.004%
21	4.173	946	959	987	rBV	193207	529618	26.08%	3.453%
22	4.643	1088	1105	1131	rBV	325087	803300	39.56%	5.237%
23	5.083	1239	1242	1246	rVB5	727	516	0.03%	0.003%
24	5.202	1275	1279	1283	rBV3	807	731	0.04%	0.005%
25	5.241	1287	1291	1293	rBV2	889	750	0.04%	0.005%
26	5.334	1298	1320	1344	rBV2	681107	2030386	100.00%	13.237%
27	5.762	1449	1453	1456	rBV3	686	472	0.02%	0.003%
28	5.881	1477	1490	1516	rBV	578462	1152239	56.75%	7.512%
29	6.177	1577	1582	1588	rBV8	2206	2441	0.12%	0.016%
30	6.328	1614	1629	1655	rBV	458961	938302	46.21%	6.117%
31	6.665	1730	1734	1736	rVV2	881	646	0.03%	0.004%
32	6.823	1776	1783	1792	rBV6	2018	3490	0.17%	0.023%
33	6.865	1792	1796	1797	rBV2	690	563	0.03%	0.004%
34	6.945	1819	1821	1827	rVB3	541	408	0.02%	0.003%

Data Path : Z:\VOASRV\HPCHEM1\MSVOA U\DATA\VU040719\  
 Data File : VU030824.D  
 Acq On : 07 Apr 2019 00:44  
 Operator : JC/SP  
 Sample : K2277-16  
 Misc : 5.0mL/MSVOA U/WATER  
 ALS Vial : 34 Sample Multiplier: 1

Instrument :  
 MSVOA\_U  
 ClientSampleId :  
 BF1C2

## Integration Parameters: LSCINT.P

Integrator: RTE  
 Smoothing : OFF  
 Sampling : 1  
 Start Thrs: 0.2  
 Stop Thrs : 0

Filtering: 5  
 Min Area: 0 % of largest Peak  
 Max Peaks: 100  
 Peak Location: TOP

If leading or trailing edge < 100 prefer < Baseline drop else tangent >  
 Peak separation: 5

Method : Z:\VOASRV\HPCHEM1\MSVOA\_U\METHOD\SOMULM040519WMA.M  
 Title : VOC Analysis

35	6.977	1827	1831	1835	rBV2	849	640	0.03%	0.004%
36	7.016	1838	1843	1844	rBV	824	522	0.03%	0.003%
37	7.125	1873	1877	1881	rBV2	426	424	0.02%	0.003%
38	7.154	1883	1886	1893	rVB2	451	489	0.02%	0.003%
39	7.225	1895	1908	1933	rBV	230975	437678	21.56%	2.853%
40	7.379	1953	1956	1967	rVB8	3159	5701	0.28%	0.037%
41	7.562	1998	2013	2034	rBV	864284	1524096	75.06%	9.936%
42	7.849	2091	2102	2130	rBV	159290	298410	14.70%	1.945%
43	8.006	2148	2151	2158	rVB6	1246	921	0.05%	0.006%
44	8.077	2171	2173	2178	rVB3	1007	742	0.04%	0.005%
45	8.177	2194	2204	2214	rVB4	9787	16826	0.83%	0.110%
46	8.308	2234	2245	2282	rBV	593875	1141115	56.20%	7.439%
47	8.569	2324	2326	2329	rBV2	956	601	0.03%	0.004%
48	8.768	2385	2388	2391	rBV3	885	641	0.03%	0.004%
49	8.787	2391	2394	2399	rVV4	686	587	0.03%	0.004%
50	8.877	2418	2422	2427	rVB4	692	735	0.04%	0.005%
51	8.948	2436	2444	2448	rBV3	1294	1466	0.07%	0.010%
52	9.032	2467	2470	2472	rBV2	830	476	0.02%	0.003%
53	9.086	2474	2487	2530	rVV	847071	1464331	72.12%	9.546%
54	9.376	2573	2577	2582	rBV3	1026	931	0.05%	0.006%
55	9.398	2582	2584	2587	rBV	1339	829	0.04%	0.005%
56	9.453	2599	2601	2605	rVB2	796	443	0.02%	0.003%
57	9.594	2641	2645	2651	rVB3	938	969	0.05%	0.006%
58	9.627	2653	2655	2658	rVV2	588	383	0.02%	0.002%
59	9.665	2663	2667	2670	rVV4	537	413	0.02%	0.003%
60	9.778	2700	2702	2704	rBV2	1091	604	0.03%	0.004%
61	9.897	2734	2739	2741	rBV	874	701	0.03%	0.005%
62	10.045	2782	2785	2788	rBV	805	541	0.03%	0.004%
63	10.173	2823	2825	2829	rVB2	592	393	0.02%	0.003%
64	10.193	2829	2831	2834	rBV	717	536	0.03%	0.003%
65	10.292	2857	2862	2864	rBV2	797	541	0.03%	0.004%
66	10.334	2871	2875	2877	rBV3	517	401	0.02%	0.003%
67	10.427	2891	2904	2929	rBV	592676	971569	47.85%	6.334%
68	10.524	2931	2934	2935	rBV2	807	418	0.02%	0.003%
69	10.556	2941	2944	2947	rBV2	634	422	0.02%	0.003%
70	10.607	2949	2960	2969	rVV4	8685	14673	0.72%	0.096%
71	10.771	3008	3011	3015	rVB4	754	660	0.03%	0.004%

Data Path : Z:\VOASRV\HPCHEM1\MSVOA U\DATA\VU040719\  
 Data File : VU030824.D  
 Acq On : 07 Apr 2019 00:44  
 Operator : JC/SP  
 Sample : K2277-16  
 Misc : 5.0mL/MSVOA U/WATER  
 ALS Vial : 34 Sample Multiplier: 1

Instrument :  
 MSVOA\_U  
 ClientSampleId :  
 BF1C2

## Integration Parameters: LSCINT.P

Integrator: RTE  
 Smoothing : OFF  
 Sampling : 1  
 Start Thrs: 0.2  
 Stop Thrs : 0

Filtering: 5  
 Min Area: 0 % of largest Peak  
 Max Peaks: 100  
 Peak Location: TOP

If leading or trailing edge < 100 prefer < Baseline drop else tangent >  
 Peak separation: 5

Method : Z:\VOASRV\HPCHEM1\MSVOA\_U\METHOD\SOMULM040519WMA.M  
 Title : VOC Analysis

72	10.791	3015	3017	3021	rBV2	510	391	0.02%	0.003%
73	10.820	3024	3026	3029	rVB3	729	445	0.02%	0.003%
74	10.971	3068	3073	3075	rBV3	725	590	0.03%	0.004%
75	10.987	3075	3078	3082	rBV	697	598	0.03%	0.004%
76	11.070	3101	3104	3106	rBV	737	495	0.02%	0.003%
77	11.090	3108	3110	3118	rVB4	739	867	0.04%	0.006%
78	11.170	3132	3135	3140	rBV	569	387	0.02%	0.003%
79	11.202	3141	3145	3148	rBV3	661	497	0.02%	0.003%
80	11.241	3153	3157	3159	rBV	728	554	0.03%	0.004%
81	11.334	3184	3186	3191	rVB3	548	403	0.02%	0.003%
82	11.405	3205	3208	3212	rVB2	1238	933	0.05%	0.006%
83	11.430	3212	3216	3218	rBV2	934	584	0.03%	0.004%
84	11.482	3219	3232	3253	rBV	707083	1176554	57.95%	7.670%
85	11.746	3311	3314	3320	rVB4	1101	1007	0.05%	0.007%
86	11.858	3337	3349	3369	rBV	731835	1219683	60.07%	7.951%
87	12.131	3431	3434	3438	rBV3	1046	897	0.04%	0.006%
88	12.437	3527	3529	3532	rBV3	816	381	0.02%	0.002%
89	12.475	3538	3541	3544	rBV2	1576	1234	0.06%	0.008%
90	12.527	3555	3557	3562	rBV3	858	565	0.03%	0.004%
91	12.662	3597	3599	3602	rBV	547	387	0.02%	0.003%
92	12.694	3607	3609	3612	rBV2	849	466	0.02%	0.003%
93	12.710	3612	3614	3620	rVB3	687	519	0.03%	0.003%
94	13.061	3719	3723	3725	rBV3	932	824	0.04%	0.005%
95	13.427	3834	3837	3842	rVB3	1190	742	0.04%	0.005%
96	13.610	3892	3894	3898	rBV2	1070	625	0.03%	0.004%
97	13.868	3972	3974	3977	rBV3	710	457	0.02%	0.003%
98	14.292	4104	4106	4110	rVB2	1015	689	0.03%	0.004%
99	14.437	4148	4151	4152	rBV2	1067	641	0.03%	0.004%
100	15.594	4509	4511	4515	rBV3	1382	942	0.05%	0.006%

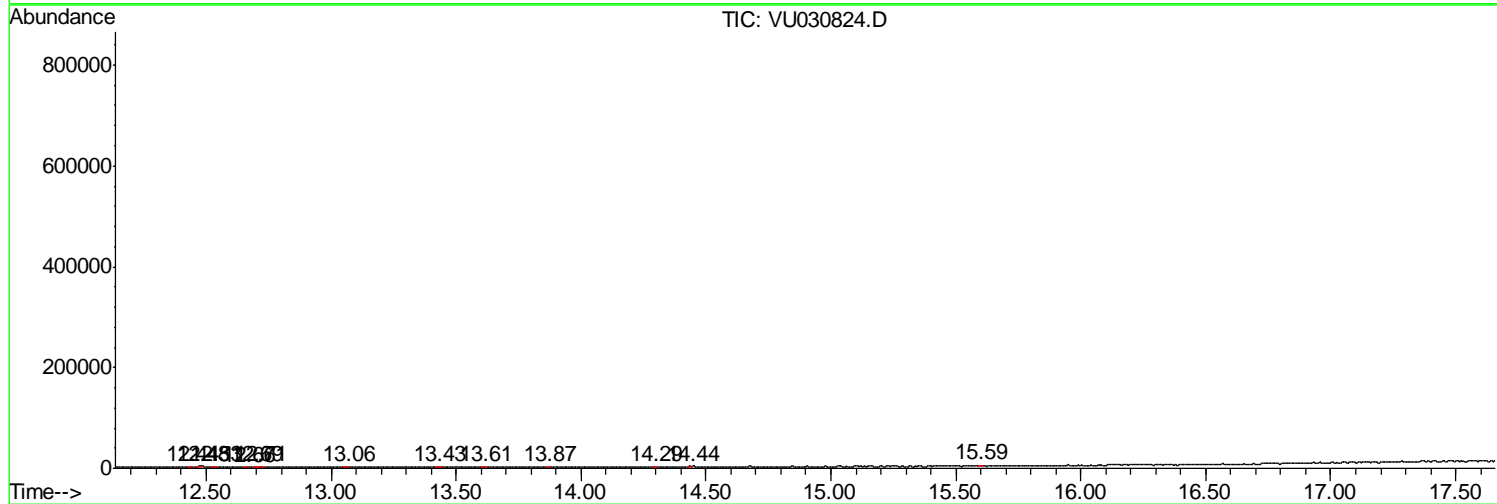
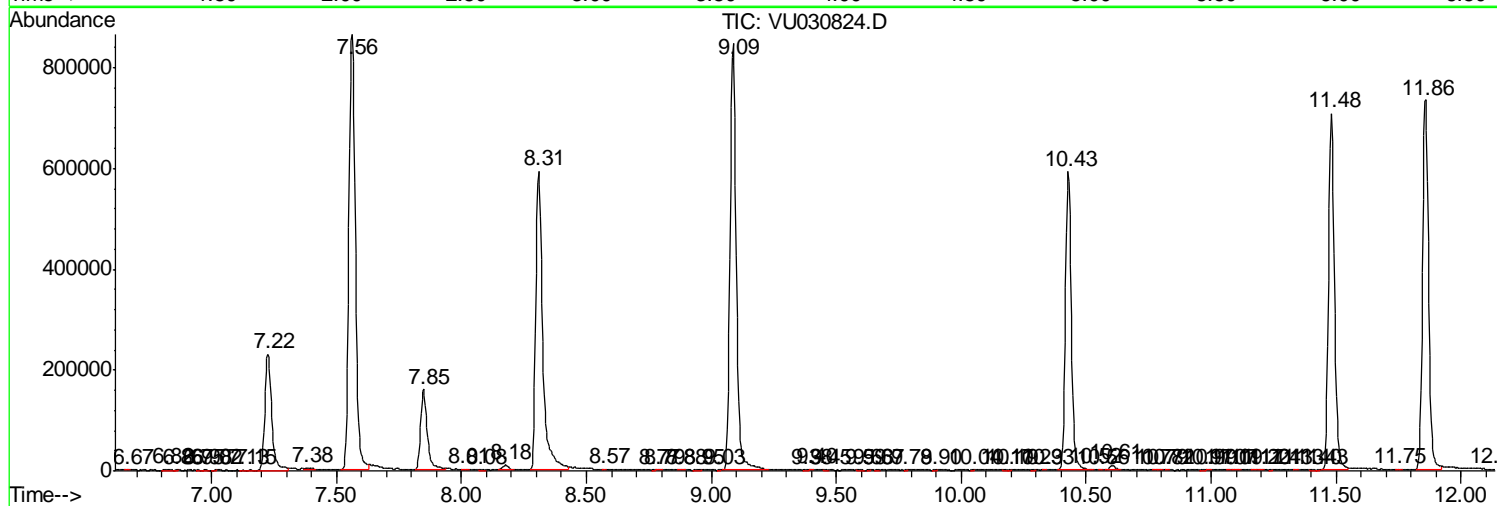
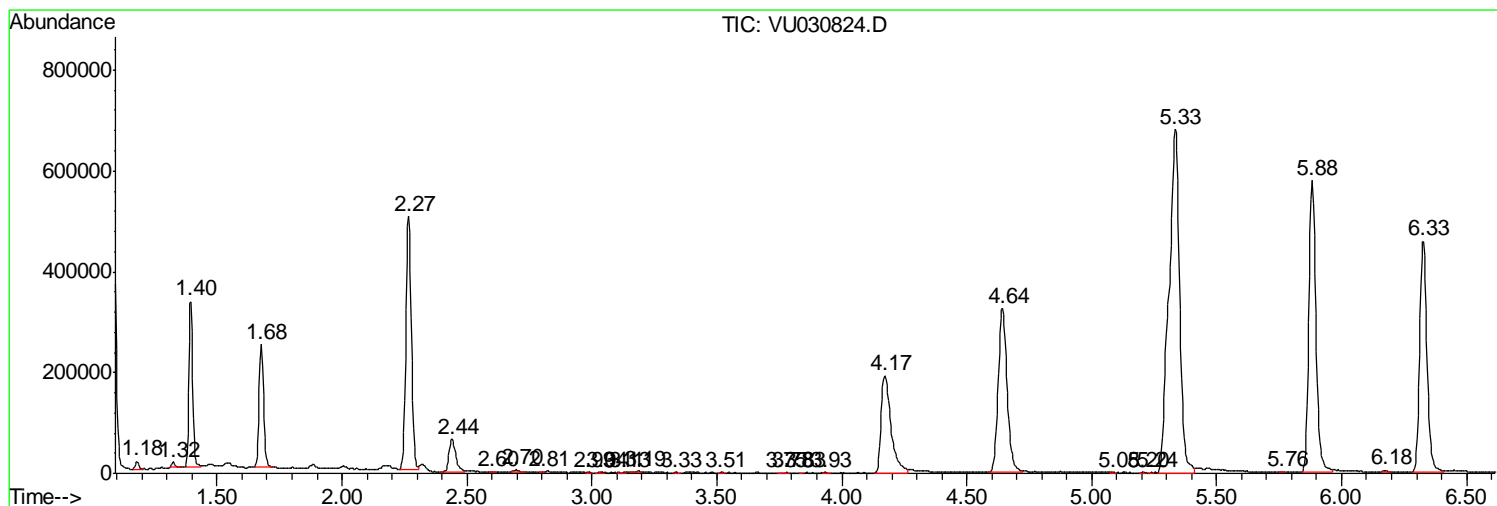
Sum of corrected areas: 15339066

Data Path : Z:\VOASRV\HPCHEM1\MSVOA U\DATA\VU040719\  
 Data File : VU030824.D  
 Acq On : 07 Apr 2019 00:44  
 Operator : JC/SP  
 Sample : K2277-16  
 Misc : 5.0mL/MSVOA U/WATER  
 ALS Vial : 34 Sample Multiplier: 1

**Instrument :**  
 MSVOA\_U  
**ClientSampled :**  
 BF1C2

Quant Method : Z:\VOASRV\HPCHEM1\MSVOA\_U\METHOD\SOMULM040519WMA.M  
 Quant Title : VOC Analysis

TIC Library : C:\DATABASE\NIST11.L  
 TIC Integration Parameters: LSCINT.P



Data Path : Z:\VOASRV\HPCHEM1\MSVOA U\DATA\VU040719\  
 Data File : VU030824.D  
 Acq On : 07 Apr 2019 00:44  
 Operator : JC/SP  
 Sample : K2277-16  
 Misc : 5.0mL/MSVOA U/WATER  
 ALS Vial : 34 Sample Multiplier: 1

Instrument :  
 MSVOA\_U  
 ClientSampleID :  
 BF1C2

Quant Method : Z:\VOASRV\HPCHEM1\MSVOA\_U\METHOD\SOMULM040519WMA.M  
 Quant Title : VOC Analysis

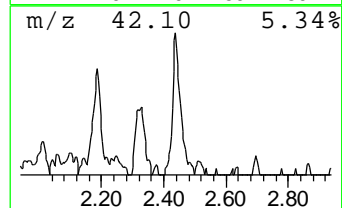
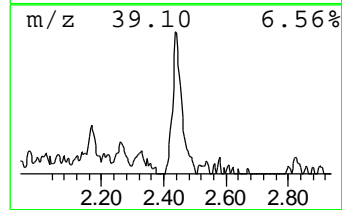
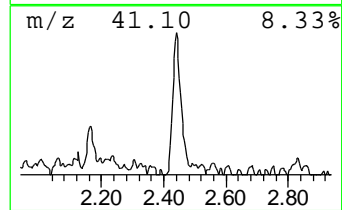
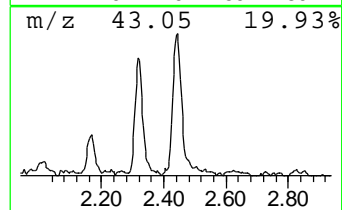
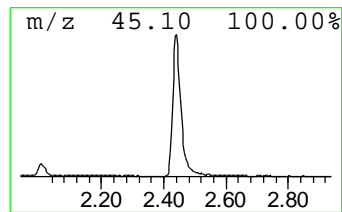
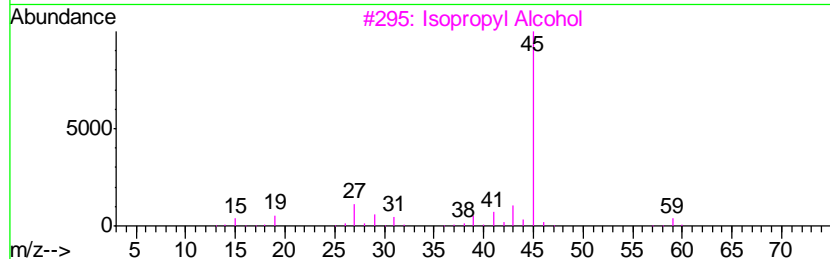
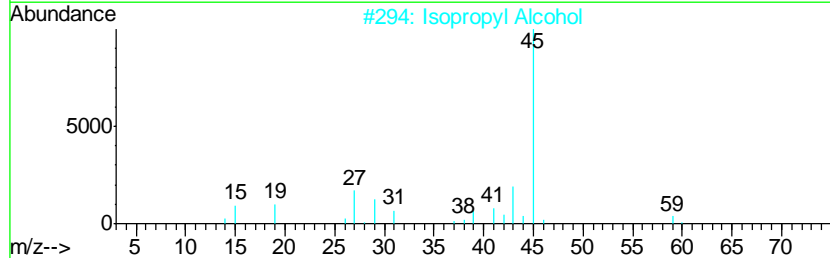
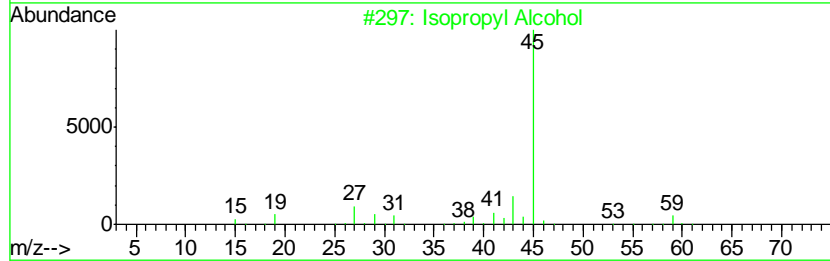
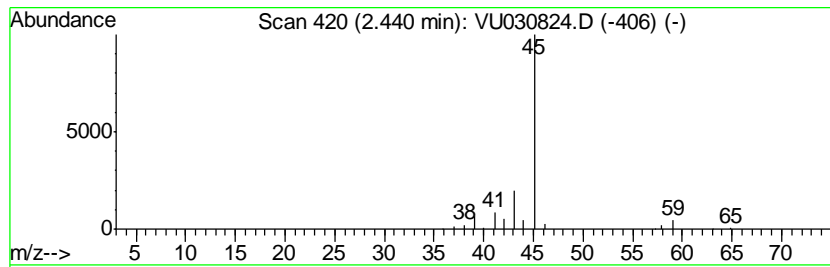
TIC Library : C:\DATABASE\NIST11.L  
 TIC Integration Parameters: LSCINT.P

\*\*\*\*\*  
 Peak Number 1 Isopropyl Alcohol Concentration Rank 2

R.T.	EstConc	Area	Relative to ISTD	R.T.
2.44	5.28 ug/L	121711	1,4-Difluorobenzene	5.88

Hit#	of	Tentative ID	MW	MolForm	CAS#	Qual
1	5	Isopropyl Alcohol	60	C3H8O	000067-63-0	78
2		Isopropyl Alcohol	60	C3H8O	000067-63-0	64
3		Isopropyl Alcohol	60	C3H8O	000067-63-0	9
4		Formamide	45	CH3NO	000075-12-7	5
5		Ethylamine	45	C2H7N	000075-04-7	5



Data Path : Z:\VOASRV\HPCHEM1\MSVOA\_U\DATA\VU040719\  
Data File : VU030824.D  
Acq On : 07 Apr 2019 00:44  
Operator : JC/SP  
Sample : K2277-16  
Misc : 5.0mL/MSVOA\_U/WATER  
ALS Vial : 34 Sample Multiplier: 1

Instrument :  
MSVOA\_U  
ClientSampleId :  
BF1C2

Quant Method : Z:\VOASRV\HPCHEM1\MSVOA\_U\METHOD\SOMULM040519WMA.M  
Quant Title : VOC Analysis

TIC Library : C:\DATABASE\NIST11.L  
TIC Integration Parameters: LSCINT.P

TIC Top Hit name	RT	EstConc	Units	Response	--Internal Standard--			
					#	RT	Resp	Conc
Isopropyl Alcohol	2.44	5.3	ug/L	121711	1	5.88	1152240	50.0