

Data Path : Z:\VOASRV\HPCHEM1\MSVOA U\DATA\VU040920\
 Data File : VU037649.D
 Acq On : 10 Apr 2020 04:10
 Operator : JC/MD
 Sample : L2212-09
 Misc : 5.0mL/MSVOA U/WATER
 ALS Vial : 12 Sample Multiplier: 1

Instrument :
 MSVOA_U
 ClientSampleId :
 C0ES6

Integration Parameters: LSCINT.P

Integrator: RTE
 Smoothing : OFF
 Sampling : 1
 Start Thrs: 0.2
 Stop Thrs : 0

Filtering: 5
 Min Area: 0 % of largest Peak
 Max Peaks: 100
 Peak Location: TOP

If leading or trailing edge < 100 prefer < Baseline drop else tangent >
 Peak separation: 5

Method : Z:\VOASRV\HPCHEM1\MSVOA_U\METHOD\SOMULM040920WMA.M
 Title : VOC Analysis

Signal : TIC

peak #	R.T. min	first scan	max scan	last scan	PK TY	peak height	corr. area	corr. % max.	% of total
1	1.613	78	85	95	rBV	273799	296683	13.92%	1.774%
2	1.929	176	183	195	rVB	223898	292398	13.72%	1.749%
3	2.591	378	389	404	rBV	400688	653158	30.64%	3.906%
4	2.787	441	450	468	rVB	66245	119293	5.60%	0.713%
5	3.482	663	666	672	rBV3	754	667	0.03%	0.004%
6	3.678	721	727	730	rBV4	555	635	0.03%	0.004%
7	3.964	814	816	817	rBV	554	210	0.01%	0.001%
8	4.060	843	846	852	rBV4	538	611	0.03%	0.004%
9	4.115	862	863	864	rBV4	363	95	0.00%	0.001%
10	4.273	910	912	915	rBV2	343	131	0.01%	0.001%
11	4.398	945	951	953	rBV5	422	502	0.02%	0.003%
12	4.539	993	995	997	rBV	583	280	0.01%	0.002%
13	4.665	1019	1034	1060	rBV	278415	648271	30.41%	3.877%
14	4.941	1117	1120	1125	rBV5	816	898	0.04%	0.005%
15	5.102	1155	1170	1192	rBV	361283	789419	37.03%	4.721%
16	5.417	1261	1268	1271	rBV7	1109	1652	0.08%	0.010%
17	5.449	1276	1278	1284	rVB5	692	656	0.03%	0.004%
18	5.475	1284	1286	1287	rBV2	440	161	0.01%	0.001%
19	5.491	1288	1291	1297	rVB5	681	637	0.03%	0.004%
20	5.546	1304	1308	1310	rBV2	529	381	0.02%	0.002%
21	5.562	1310	1313	1315	rBV4	362	285	0.01%	0.002%
22	5.639	1334	1337	1340	rBV4	481	361	0.02%	0.002%
23	5.678	1345	1349	1351	rBV3	648	449	0.02%	0.003%
24	5.761	1351	1375	1402	rBV2	810867	2131890	100.00%	12.750%
25	6.147	1491	1495	1498	rBV4	1151	915	0.04%	0.005%
26	6.215	1514	1516	1517	rBV2	601	302	0.01%	0.002%
27	6.279	1521	1536	1560	rVV	665495	1244561	58.38%	7.443%
28	6.501	1602	1605	1608	rBV2	690	609	0.03%	0.004%
29	6.723	1658	1674	1692	rBV	515920	984989	46.20%	5.891%
30	7.012	1761	1764	1765	rBV	811	415	0.02%	0.002%
31	7.060	1776	1779	1781	rBV3	701	321	0.02%	0.002%
32	7.073	1781	1783	1788	rBV3	604	580	0.03%	0.003%
33	7.420	1886	1891	1893	rBV4	571	534	0.03%	0.003%
34	7.488	1910	1912	1915	rVB3	585	296	0.01%	0.002%

Data Path : Z:\VOASRV\HPCHEM1\MSVOA U\DATA\VU040920\
 Data File : VU037649.D
 Acq On : 10 Apr 2020 04:10
 Operator : JC/MD
 Sample : L2212-09
 Misc : 5.0mL/MSVOA U/WATER
 ALS Vial : 12 Sample Multiplier: 1

Instrument :
 MSVOA_U
 ClientSampleId :
 C0ES6

Integration Parameters: LSCINT.P

Integrator: RTE
 Smoothing : OFF
 Sampling : 1
 Start Thrs: 0.2
 Stop Thrs : 0

Filtering: 5
 Min Area: 0 % of largest Peak
 Max Peaks: 100
 Peak Location: TOP

If leading or trailing edge < 100 prefer < Baseline drop else tangent >
 Peak separation: 5

Method : Z:\VOASRV\HPCHEM1\MSVOA_U\METHOD\SOMULM040920WMA.M
 Title : VOC Analysis

35	7.510	1915	1919	1922	rBV3	570	471	0.02%	0.003%
36	7.542	1927	1929	1930	rBV2	653	293	0.01%	0.002%
37	7.591	1931	1944	1961	rVV	310864	538778	25.27%	3.222%
38	7.922	2034	2047	2063	rBV	1005349	1702686	79.87%	10.183%
39	8.202	2120	2134	2151	rBV	226410	372956	17.49%	2.231%
40	8.440	2204	2208	2211	rBV3	600	477	0.02%	0.003%
41	8.459	2211	2214	2216	rBV2	460	372	0.02%	0.002%
42	8.485	2218	2222	2223	rBV3	1314	934	0.04%	0.006%
43	8.542	2236	2240	2244	rBV5	614	627	0.03%	0.004%
44	8.565	2244	2247	2250	rBV3	819	790	0.04%	0.005%
45	8.604	2257	2259	2261	rBV3	293	149	0.01%	0.001%
46	8.655	2261	2275	2301	rBV	813016	1445660	67.81%	8.646%
47	8.851	2333	2336	2338	rBV4	299	191	0.01%	0.001%
48	8.951	2360	2367	2369	rBV3	717	937	0.04%	0.006%
49	8.989	2376	2379	2381	rBV2	494	347	0.02%	0.002%
50	9.028	2389	2391	2392	rBV2	600	232	0.01%	0.001%
51	9.044	2393	2396	2398	rVV2	568	345	0.02%	0.002%
52	9.063	2398	2402	2403	rVV2	527	327	0.02%	0.002%
53	9.173	2434	2436	2437	rBV	439	243	0.01%	0.001%
54	9.198	2442	2444	2445	rBV	319	120	0.01%	0.001%
55	9.218	2447	2450	2456	rVB2	692	748	0.04%	0.004%
56	9.243	2456	2458	2460	rBV2	606	358	0.02%	0.002%
57	9.340	2486	2488	2491	rVB2	295	141	0.01%	0.001%
58	9.382	2497	2501	2504	rBV3	274	204	0.01%	0.001%
59	9.436	2504	2518	2537	rBV	947549	1522606	71.42%	9.106%
60	9.706	2597	2602	2604	rBV4	1032	1079	0.05%	0.006%
61	9.835	2638	2642	2645	rBV3	561	396	0.02%	0.002%
62	9.854	2645	2648	2649	rBV2	518	270	0.01%	0.002%
63	9.903	2661	2663	2665	rBV	502	302	0.01%	0.002%
64	9.935	2672	2673	2676	rBV2	347	199	0.01%	0.001%
65	10.012	2694	2697	2699	rBV3	528	359	0.02%	0.002%
66	10.021	2699	2700	2702	rVB3	408	164	0.01%	0.001%
67	10.121	2724	2731	2739	rBV6	993	1515	0.07%	0.009%
68	10.169	2744	2746	2748	rVB2	347	88	0.00%	0.001%
69	10.195	2752	2754	2756	rBV2	483	240	0.01%	0.001%
70	10.292	2782	2784	2788	rVB3	662	373	0.02%	0.002%
71	10.324	2788	2794	2795	rBV2	587	504	0.02%	0.003%

Data Path : Z:\VOASRV\HPCHEM1\MSVOA U\DATA\VU040920\
 Data File : VU037649.D
 Acq On : 10 Apr 2020 04:10
 Operator : JC/MD
 Sample : L2212-09
 Misc : 5.0mL/MSVOA U/WATER
 ALS Vial : 12 Sample Multiplier: 1

Instrument :
 MSVOA_U
 ClientSampleId :
 C0ES6

Integration Parameters: LSCINT.P

Integrator: RTE
 Smoothing : OFF
 Sampling : 1
 Start Thrs: 0.2
 Stop Thrs : 0

Filtering: 5
 Min Area: 0 % of largest Peak
 Max Peaks: 100
 Peak Location: TOP

If leading or trailing edge < 100 prefer < Baseline drop else tangent >
 Peak separation: 5

Method : Z:\VOASRV\HPCHEM1\MSVOA_U\METHOD\SOMULM040920WMA.M
 Title : VOC Analysis

72	10.356	2799	2804	2808	rBV5	837	1221	0.06%	0.007%
73	10.481	2840	2843	2845	rBV4	373	243	0.01%	0.001%
74	10.533	2856	2859	2861	rBV2	527	365	0.02%	0.002%
75	10.684	2903	2906	2909	rBV2	535	324	0.02%	0.002%
76	10.771	2921	2933	2953	rVB	655372	1062595	49.84%	6.355%
77	10.899	2970	2973	2979	rVB3	1146	1116	0.05%	0.007%
78	11.060	3019	3023	3025	rBV3	850	591	0.03%	0.004%
79	11.346	3109	3112	3115	rBV	554	453	0.02%	0.003%
80	11.481	3151	3154	3159	rVB4	906	689	0.03%	0.004%
81	11.578	3181	3184	3189	rVB4	595	466	0.02%	0.003%
82	11.825	3248	3261	3278	rVB	899515	1420752	66.64%	8.497%
83	11.992	3310	3313	3314	rBV	595	335	0.02%	0.002%
84	12.076	3332	3339	3350	rBV4	9073	15351	0.72%	0.092%
85	12.205	3367	3379	3395	rVB	917143	1444452	67.75%	8.639%
86	12.427	3446	3448	3451	rBV2	617	215	0.01%	0.001%
87	12.546	3479	3485	3486	rBV2	555	587	0.03%	0.004%
88	13.584	3804	3808	3812	rBV3	809	985	0.05%	0.006%

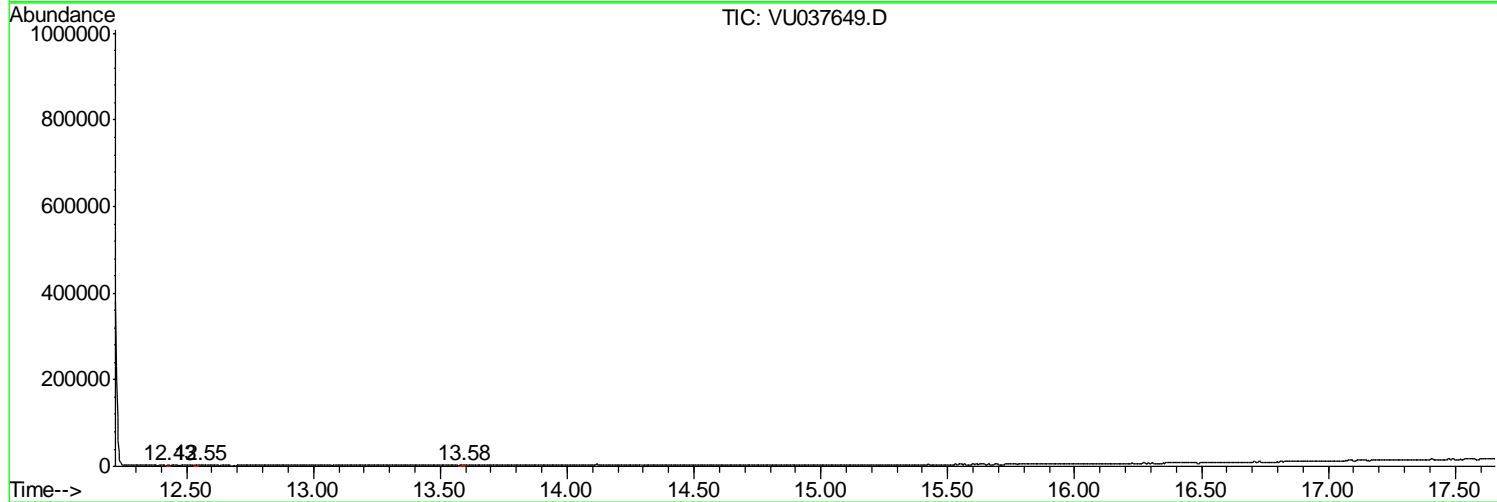
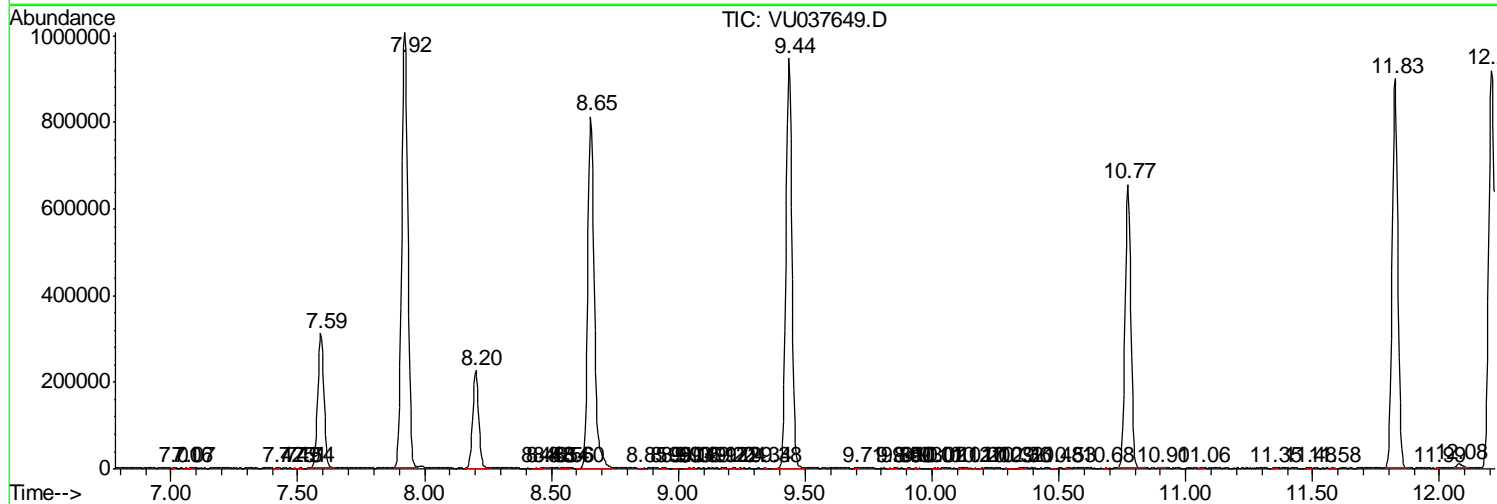
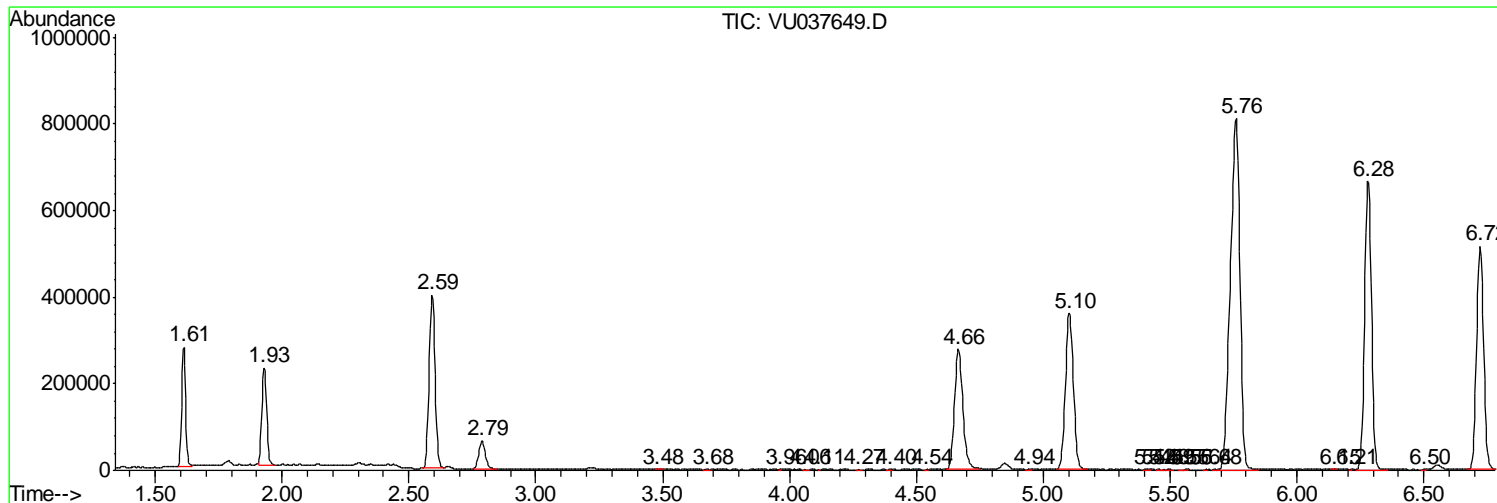
Sum of corrected areas: 16720466

Data Path : Z:\VOASRV\HPCHEM1\MSVOA U\DATA\VU040920\
 Data File : VU037649.D
 Acq On : 10 Apr 2020 04:10
 Operator : JC/MD
 Sample : L2212-09
 Misc : 5.0mL/MSVOA U/WATER
 ALS Vial : 12 Sample Multiplier: 1

Instrument :
 MSVOA_U
ClientSampled :
 C0ES6

Quant Method : Z:\VOASRV\HPCHEM1\MSVOA_U\METHOD\SOMULM040920WMA.M
 Quant Title : VOC Analysis

TIC Library : C:\DATABASE\NIST11.L
 TIC Integration Parameters: LSCINT.P



Data Path : Z:\VOASRV\HPCHEM1\MSVOA U\DATA\VU040920\
 Data File : VU037649.D
 Acq On : 10 Apr 2020 04:10
 Operator : JC/MD
 Sample : L2212-09
 Misc : 5.0mL/MSVOA U/WATER
 ALS Vial : 12 Sample Multiplier: 1

Instrument :
 MSVOA_U
 ClientSampleID :
 C0ES6

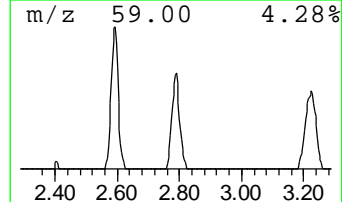
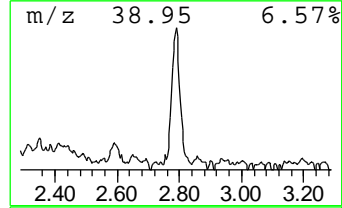
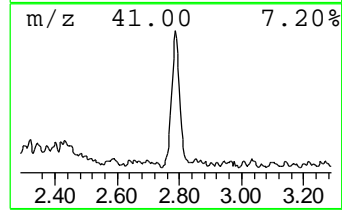
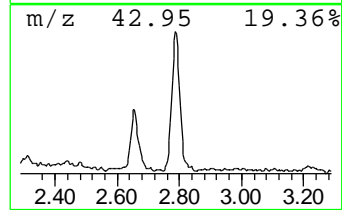
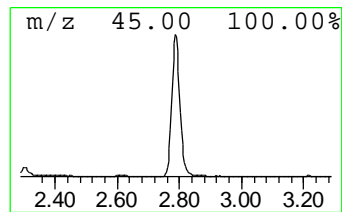
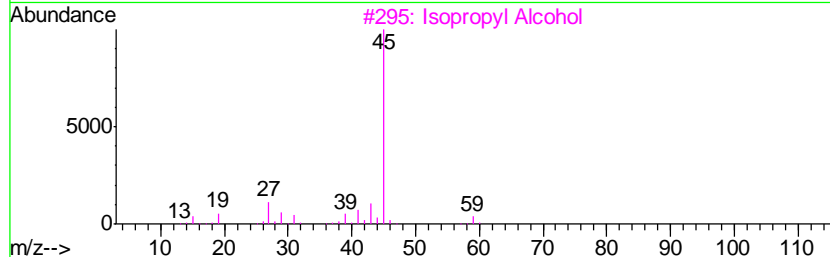
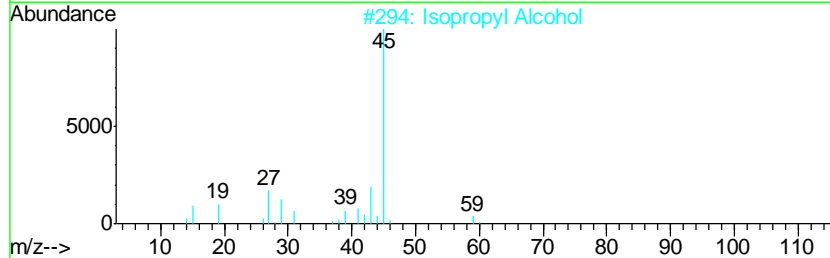
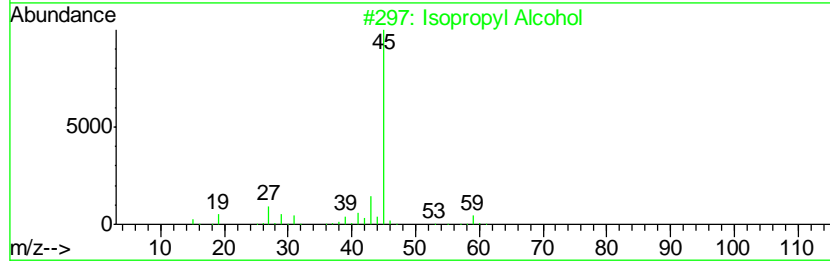
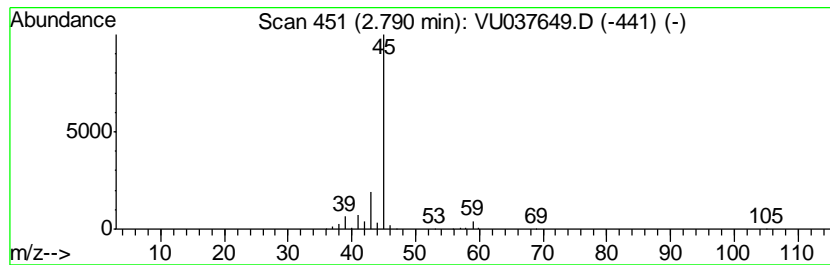
Quant Method : Z:\VOASRV\HPCHEM1\MSVOA_U\METHOD\SOMULM040920WMA.M
 Quant Title : VOC Analysis

TIC Library : C:\DATABASE\NIST11.L
 TIC Integration Parameters: LSCINT.P

 Peak Number 1 Isopropyl Alcohol Concentration Rank 2

R.T.	EstConc	Area	Relative to ISTD	R.T.
2.79	4.79 ug/L	119293	1,4-Difluorobenzene	6.28

Hit#	of	Tentative ID	MW	MolForm	CAS#	Qual
1	5	Isopropyl Alcohol	60	C3H8O	000067-63-0	90
2		Isopropyl Alcohol	60	C3H8O	000067-63-0	83
3		Isopropyl Alcohol	60	C3H8O	000067-63-0	83
4		Propane, 2-ethoxy-	88	C5H12O	000625-54-7	64
5		Isopropyl Alcohol	60	C3H8O	000067-63-0	9



Data Path : Z:\VOASRV\HPCHEM1\MSVOA_U\DATA\VU040920\
Data File : VU037649.D
Acq On : 10 Apr 2020 04:10
Operator : JC/MD
Sample : L2212-09
Misc : 5.0mL/MSVOA_U/WATER
ALS Vial : 12 Sample Multiplier: 1

Instrument :
MSVOA_U
ClientSampleId :
C0ES6

Quant Method : Z:\VOASRV\HPCHEM1\MSVOA_U\METHOD\SOMULM040920WMA.M
Quant Title : VOC Analysis

TIC Library : C:\DATABASE\NIST11.L
TIC Integration Parameters: LSCINT.P

TIC Top Hit name	RT	EstConc	Units	Response	--Internal Standard--			
					#	RT	Resp	Conc
Isopropyl Alcohol	2.79	4.8	ug/L	119293	1	6.28	1244560	50.0