

Data Path : Z:\voasrv\HPCHEM1\MSVOA_U\Data\VU040921\
 Data File : VU042999.D
 Acq On : 09 Apr 2021 14:01
 Operator : SY/MD
 Sample : VU0409WBL01
 Misc : 5.0mL/MSVOA_U/WATER
 ALS Vial : 3 Sample Multiplier: 1

Instrument :
 MSVOA_U
 ClientSampleId :
 VU0409WBL01

Integration Parameters: RTEINT.P

Integrator: RTE
 Smoothing : ON Filtering: 5
 Sampling : 1 Min Area: 3 % of largest Peak
 Start Thrs: 0.2 Max Peaks: 100
 Stop Thrs : 0 Peak Location: TOP

If leading or trailing edge < 100 prefer < Baseline drop else tangent >
 Peak separation: 5

Method : Z:\voasrv\HPCHEM1\MSVOA_U\Method\82U040921W.M
 Title : SW846 8260

Signal : TIC: VU042999.D\data.ms

peak #	R.T. min	first scan	max scan	last scan	PK TY	peak height	corr. area	corr. % max.	% of total
1	1.507	41	52	66	rBV4	4415	9227	1.28%	0.234%
2	5.298	1211	1231	1244	rBV	119564	251542	34.78%	6.375%
3	5.382	1244	1257	1277	rVB	184412	373648	51.66%	9.470%
4	5.710	1344	1359	1378	rBV	134354	273370	37.80%	6.929%
5	6.256	1514	1529	1552	rBV	268711	512076	70.80%	12.978%
6	7.906	2028	2042	2067	rBV	424242	723295	100.00%	18.332%
7	9.427	2501	2515	2534	rBV	388302	640009	88.49%	16.221%
8	10.642	2880	2893	2914	rVB	318456	515766	71.31%	13.072%
9	11.819	3244	3259	3278	rBV	408000	646648	89.40%	16.389%

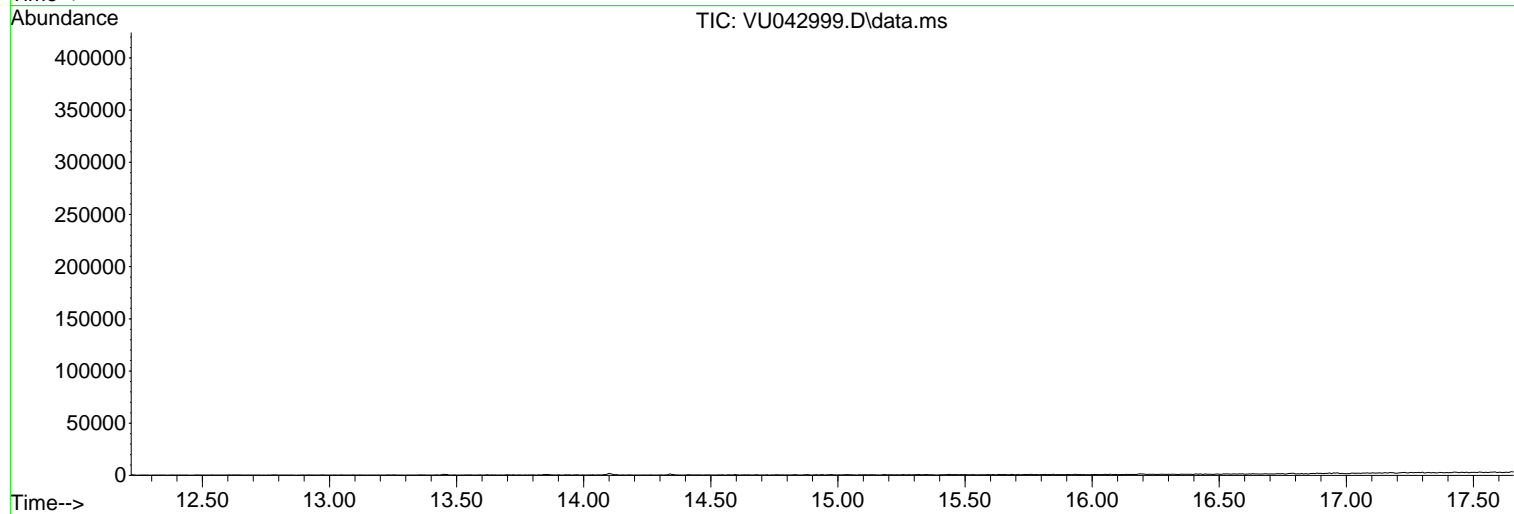
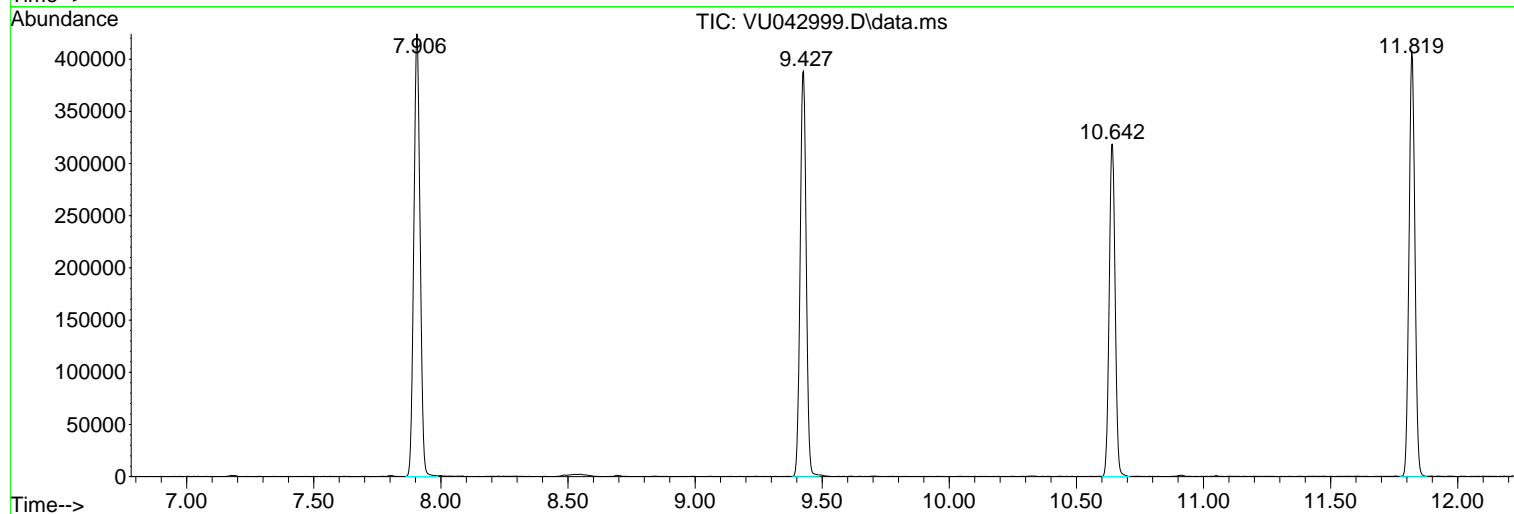
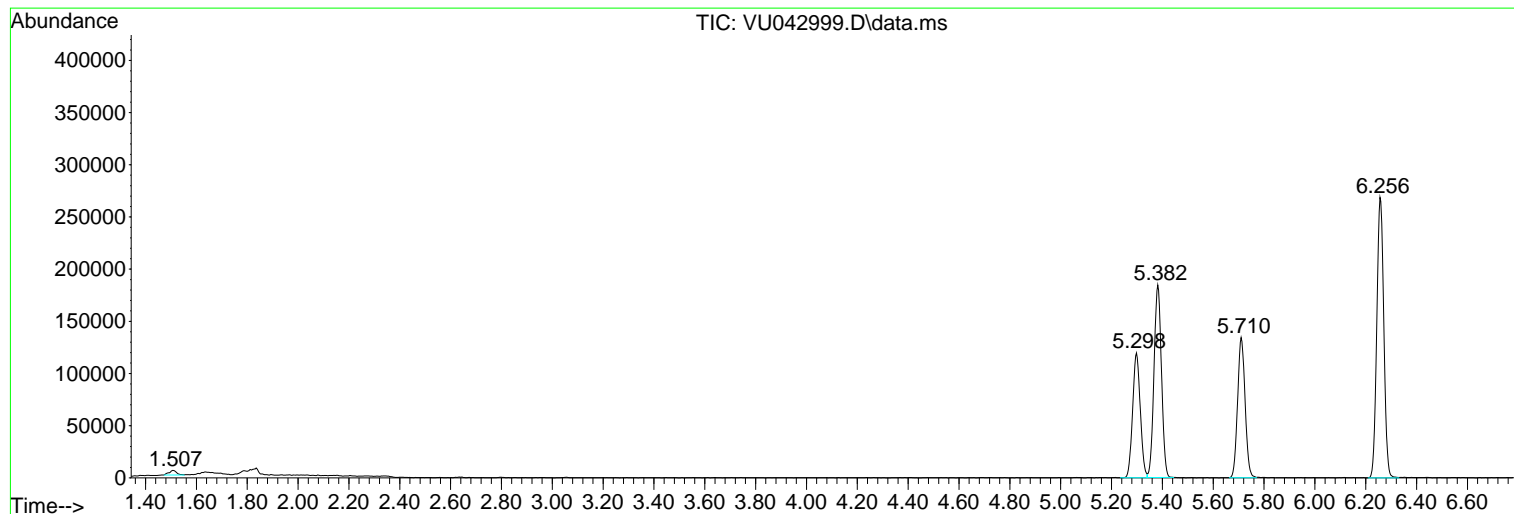
Sum of corrected areas: 3945581

Data Path : Z:\voasrv\HPCHEM1\MSVOA_U\Data\VU040921\
Data File : VU042999.D
Acq On : 09 Apr 2021 14:01
Operator : SY/MD
Sample : VU0409WBL01
Misc : 5.0mL/MSVOA_U/WATER
ALS Vial : 3 Sample Multiplier: 1

Instrument :
MSVOA_U
ClientSampleId :
VU0409WBL01

Quant Method : Z:\voasrv\HPCHEM1\MSVOA_U\Method\82U040921W.M
Quant Title : SW846 8260

TIC Library : C:\DATABASE\NIST11.L
TIC Integration Parameters: LSCINT.P



Data Path : Z:\voasrv\HPCHEM1\MSVOA_U\Data\VU040921\
Data File : VU042999.D
Acq On : 09 Apr 2021 14:01
Operator : SY/MD
Sample : VU0409WBL01
Misc : 5.0mL/MSVOA_U/WATER
ALS Vial : 3 Sample Multiplier: 1

Instrument :
MSVOA_U
ClientSampleId :
VU0409WBL01

Quant Method : Z:\voasrv\HPCHEM1\MSVOA_U\Method\82U040921W.M
Quant Title : SW846 8260

TIC Library : C:\DATABASE\NIST11.L
TIC Integration Parameters: LSCINT.P

No Library Search Compounds Detected

Data Path : Z:\voasrv\HPCHEM1\MSVOA_U\Data\VU040921\
Data File : VU042999.D
Acq On : 09 Apr 2021 14:01
Operator : SY/MD
Sample : VU0409WBL01
Misc : 5.0mL/MSVOA_U/WATER
ALS Vial : 3 Sample Multiplier: 1

Instrument :
MSVOA_U
ClientSampleId :
VU0409WBL01

Quant Method : Z:\voasrv\HPCHEM1\MSVOA_U\Method\82U040921W.M
Quant Title : SW846 8260

TIC Library : C:\DATABASE\NIST11.L
TIC Integration Parameters: LSCINT.P

TIC Top Hit name	RT	EstConc	Units	Response	--Internal Standard--			
					#	RT	Resp	Conc
