

Data Path : Z:\voasrv\HPCHEM1\MSVOA_U\Data\VU040924\
 Data File : VU058506.D
 Acq On : 09 Apr 2024 11:49
 Operator : MD/SY
 Sample : P2013-02 10X
 Misc : 25.0mL/MSVOA_U/WATER
 ALS Vial : 5 Sample Multiplier: 1

Instrument :
 MSVOA_U
 ClientSampleId :
 EOMA8

Quant Time: Apr 10 01:13:29 2024
 Quant Method : Z:\voasrv\HPCHEM1\MSVOA_U\Method\SFAMUTR040424WMA.M
 Quant Title : TRACE VOA SFAM1.0
 QLast Update : Wed Apr 10 01:12:33 2024
 Response via : Initial Calibration

Compound	R.T.	QIon	Response	Conc	Units	Dev(Min)

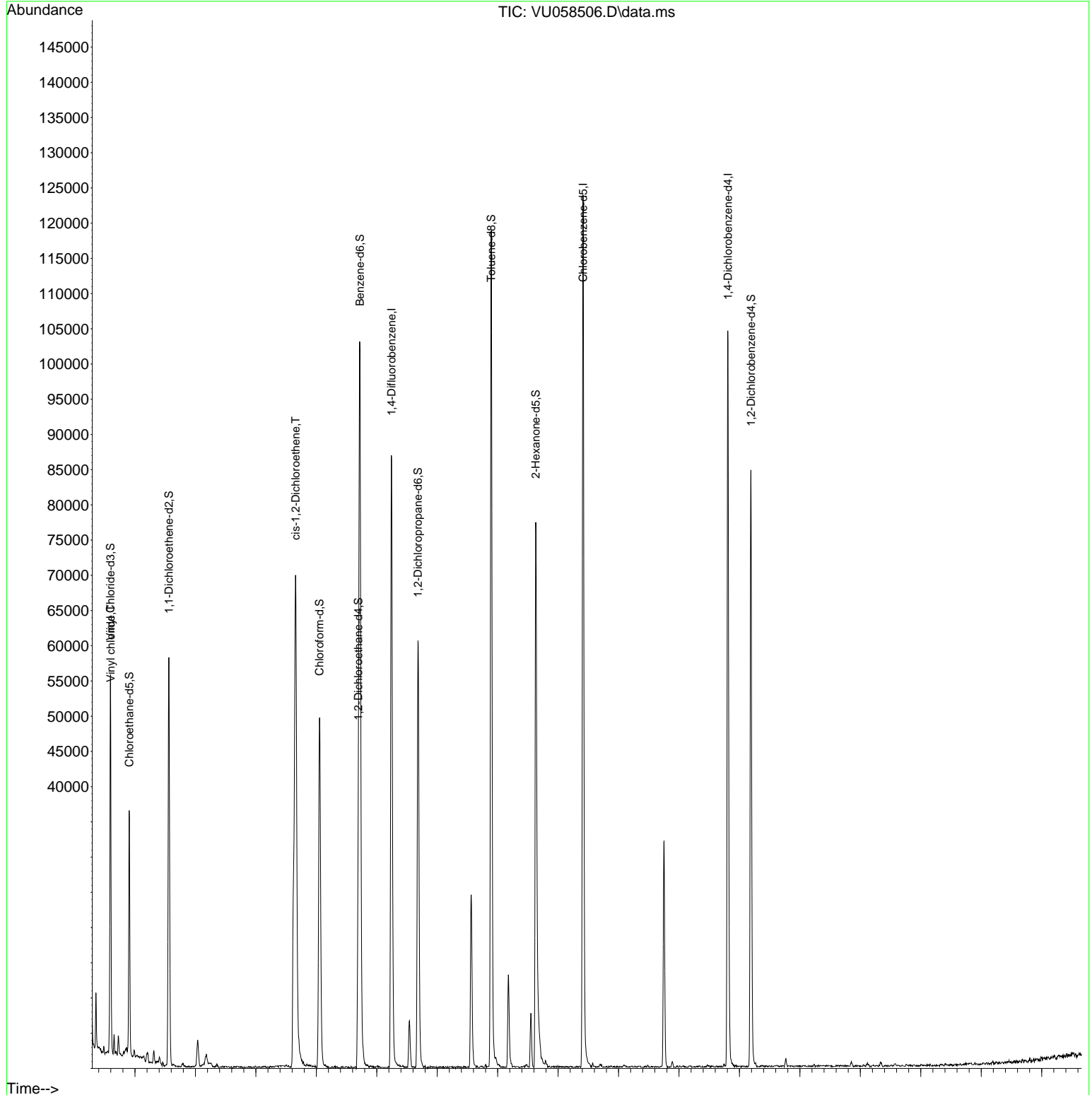
Internal Standards						
1) 1,4-Difluorobenzene	6.245	114	68602	5.000	ug/L	0.00
28) Chlorobenzene-d5	9.412	117	66853	5.000	ug/L	0.00
58) 1,4-Dichlorobenzene-d4	11.810	152	28064	5.000	ug/L	0.00
System Monitoring Compounds						
4) Vinyl Chloride-d3	1.592	65	25666	5.651	ug/L	0.00
Spiked Amount	5.000	Range 40 - 130	Recovery	=	113.000%	
7) Chloroethane-d5	1.904	69	22449	5.687	ug/L	0.00
Spiked Amount	5.000	Range 65 - 130	Recovery	=	113.800%	
11) 1,1-Dichloroethene-d2	2.560	65	11538	5.613	ug/L	0.00
Spiked Amount	5.000	Range 60 - 125	Recovery	=	112.200%	
20) 2-Butanone-d5	4.621	46	38836	40.574	ug/L	0.00
Spiked Amount	50.000	Range 40 - 130	Recovery	=	81.140%	
24) Chloroform-d	5.052	84	47037	5.188	ug/L	0.00
Spiked Amount	5.000	Range 70 - 125	Recovery	=	103.800%	
26) 1,2-Dichloroethane-d4	5.695	65	22119	5.227	ug/L	0.00
Spiked Amount	5.000	Range 70 - 130	Recovery	=	104.600%	
32) Benzene-d6	5.721	84	96670	5.371	ug/L	0.00
Spiked Amount	5.000	Range 70 - 125	Recovery	=	107.400%	
36) 1,2-Dichloropropane-d6	6.682	67	28935	5.126	ug/L	0.00
Spiked Amount	5.000	Range 60 - 140	Recovery	=	102.600%	
41) Toluene-d8	7.894	98	78696	4.930	ug/L	0.00
Spiked Amount	5.000	Range 70 - 130	Recovery	=	98.600%	
43) trans-1,3-Dichloroprop...	8.177	79	8245	4.706	ug/L	0.00
Spiked Amount	5.000	Range 55 - 130	Recovery	=	94.200%	
46) 2-Hexanone-d5	8.630	63	26867	37.178	ug/L	0.00
Spiked Amount	50.000	Range 45 - 130	Recovery	=	74.360%	
56) 1,1,2,2-Tetrachloroeth...	10.753	84	16639	4.176	ug/L	0.00
Spiked Amount	5.000	Range 65 - 120	Recovery	=	83.600%	
66) 1,2-Dichlorobenzene-d4	12.190	152	22065	4.668	ug/L	0.00
Spiked Amount	5.000	Range 80 - 120	Recovery	=	93.400%	
Target Compounds						
						Qvalue
5) Vinyl chloride	1.599	62	10713	1.533	ug/L	94
22) cis-1,2-Dichloroethene	4.660	96	32906	5.751	ug/L	96
34) Trichloroethene	6.541	95	2419	0.396	ug/L	95

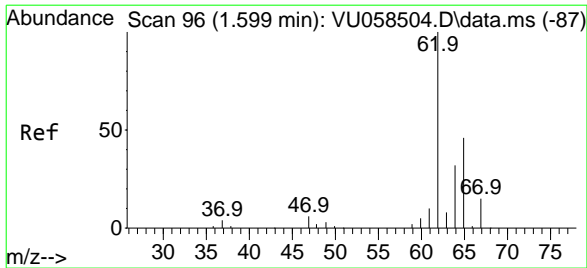
(#) = qualifier out of range (m) = manual integration (+) = signals summed

Data Path : Z:\voasrv\HPCHEM1\MSVOA_U\Data\VU040924\
 Data File : VU058506.D
 Acq On : 09 Apr 2024 11:49
 Operator : MD/SY
 Sample : P2013-02 10X
 Misc : 25.0mL/MSVOA_U/WATER
 ALS Vial : 5 Sample Multiplier: 1

Instrument :
 MSVOA_U
 ClientSampleId :
 EOMA8

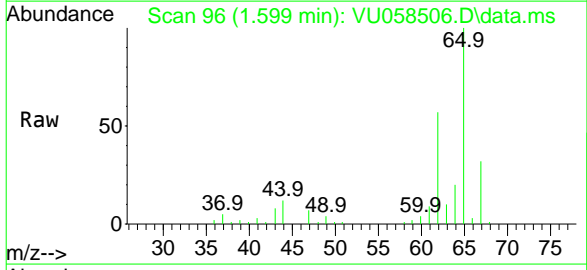
Quant Time: Apr 10 01:13:29 2024
 Quant Method : Z:\voasrv\HPCHEM1\MSVOA_U\Method\SFAMUTR040424WMA.M
 Quant Title : TRACE VOA SFAM1.0
 QLast Update : Wed Apr 10 01:12:33 2024
 Response via : Initial Calibration



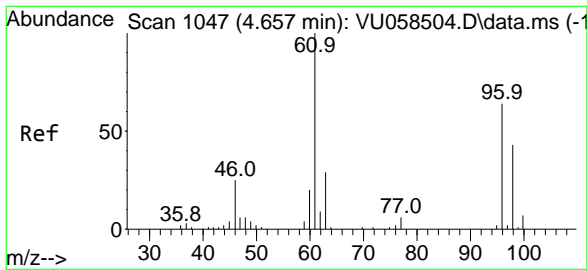
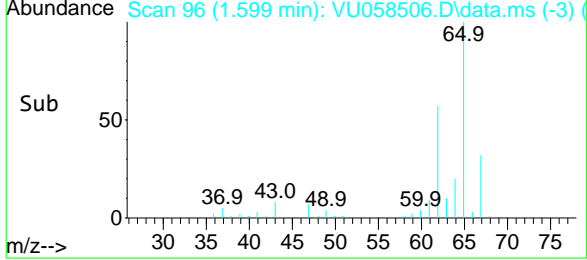
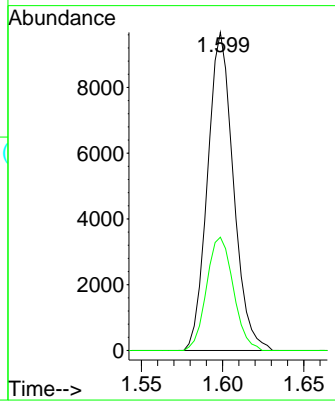


#5
 Vinyl chloride
 Concen: 1.533 ug/L
 RT: 1.599 min Scan# 96
 Delta R.T. -0.000 min
 Lab File: VU058506.D
 Acq: 09 Apr 2024 11:49

Instrument : MSVOA_U
 ClientSampleId : EOMA8

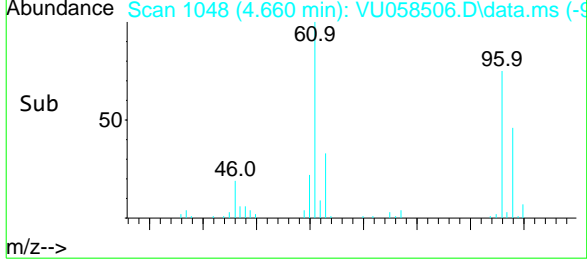
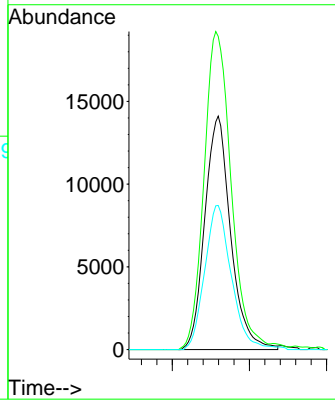
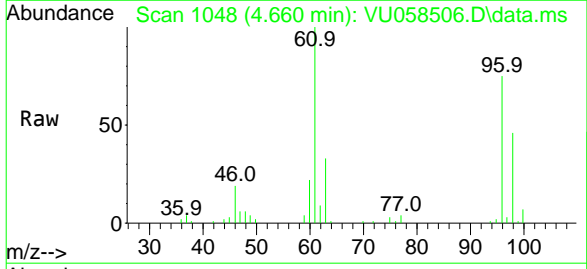


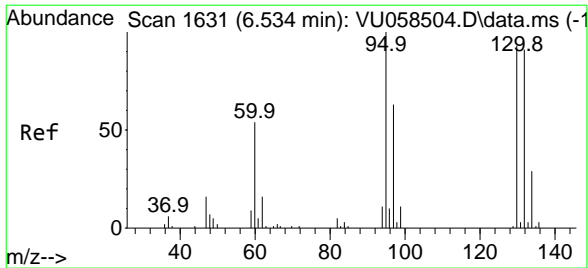
Tgt Ion: 62 Resp: 10713
 Ion Ratio Lower Upper
 62 100
 64 35.6 22.6 42.0



#22
 cis-1,2-Dichloroethene
 Concen: 5.751 ug/L
 RT: 4.660 min Scan# 1048
 Delta R.T. 0.003 min
 Lab File: VU058506.D
 Acq: 09 Apr 2024 11:49

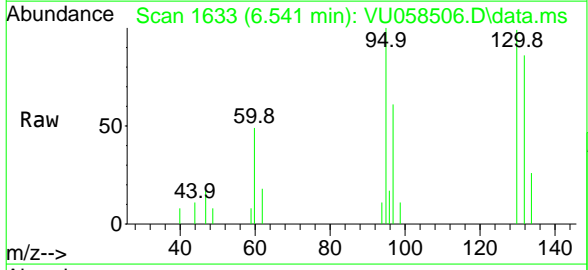
Tgt Ion: 96 Resp: 32906
 Ion Ratio Lower Upper
 96 100
 61 134.1 98.1 182.3
 98 61.7 43.6 81.0





#34
 Trichloroethene
 Concen: 0.396 ug/L
 RT: 6.541 min Scan# 1633
 Delta R.T. 0.006 min
 Lab File: VU058506.D
 Acq: 09 Apr 2024 11:49

Instrument : MSVOA_U
 ClientSampleId : EOMA8



Tgt Ion: 95 Resp: 2419

Ion	Ratio	Lower	Upper
95	100		
97	60.7	45.6	84.6
132	86.1	64.8	120.3
130	98.8	68.0	126.2

