

Data Path : Z:\VOASRV\HPCHEM1\MSVOA U\DATA\VU041119\
 Data File : VU031073.D
 Acq On : 11 Apr 2019 16:59
 Operator : JC/SP
 Sample : K2277-21ME
 Misc : 5.69µ/5mL/100uL/5.0mL/MSVOA_U/MEOH
 ALS Vial : 64 Sample Multiplier: 1

Instrument :
 MSVOA_U
 ClientSampleId :
 BF2R5ME

Integration Parameters: LSCINT.P

Integrator: RTE
 Smoothing : OFF
 Sampling : 1
 Start Thrs: 0.2
 Stop Thrs : 0

Filtering: 5
 Min Area: 0 % of largest Peak
 Max Peaks: 100
 Peak Location: TOP

If leading or trailing edge < 100 prefer < Baseline drop else tangent >
 Peak separation: 5

Method : Z:\VOASRV\HPCHEM1\MSVOA_U\METHOD\SOMULM040519WMA.M
 Title : VOC Analysis

Signal : TIC

peak #	R.T. min	first scan	max scan	last scan	PK TY	peak height	corr. area	corr. % max.	% of total
1	1.174	21	26	36	rBV	18688	20091	0.82%	0.095%
2	1.392	87	94	111	rVB	269190	314148	12.87%	1.482%
3	1.637	165	170	181	rBV	262359	290353	11.89%	1.370%
4	2.235	345	356	369	rVB	514376	790059	32.36%	3.727%
5	2.338	381	388	405	rVB	24331	50990	2.09%	0.241%
6	2.598	467	469	474	rVB	1279	721	0.03%	0.003%
7	2.637	477	481	484	rBV5	960	1010	0.04%	0.005%
8	2.682	490	495	499	rBV5	3561	4004	0.16%	0.019%
9	2.823	529	539	542	rBV5	3611	5037	0.21%	0.024%
10	3.045	605	608	615	rVB4	1073	1126	0.05%	0.005%
11	3.193	648	654	658	rVB3	826	994	0.04%	0.005%
12	3.222	658	663	666	rBV4	965	959	0.04%	0.005%
13	3.386	710	714	718	rBV3	965	676	0.03%	0.003%
14	3.450	730	734	738	rBV3	993	678	0.03%	0.003%
15	3.479	738	743	745	rBV3	842	758	0.03%	0.004%
16	3.627	784	789	794	rVB4	964	1034	0.04%	0.005%
17	3.775	831	835	840	rVB4	781	718	0.03%	0.003%
18	3.875	864	866	874	rBV4	711	868	0.04%	0.004%
19	3.949	886	889	896	rVB4	951	709	0.03%	0.003%
20	4.187	950	963	1012	rBV	211328	822598	33.69%	3.881%
21	4.637	1086	1103	1127	rBV2	365899	941830	38.58%	4.443%
22	4.833	1161	1164	1169	rVB5	985	907	0.04%	0.004%
23	5.029	1219	1225	1228	rBV4	838	1066	0.04%	0.005%
24	5.061	1231	1235	1236	rBV3	1041	642	0.03%	0.003%
25	5.116	1249	1252	1256	rVB3	1096	680	0.03%	0.003%
26	5.174	1266	1270	1276	rVB5	1164	1274	0.05%	0.006%
27	5.206	1276	1280	1284	rBV4	1042	932	0.04%	0.004%
28	5.325	1295	1317	1346	rBV2	835627	2441318	100.00%	11.517%
29	5.611	1399	1406	1407	rBV5	2309	2569	0.11%	0.012%
30	5.878	1475	1489	1522	rBV	831454	1766334	72.35%	8.333%
31	6.180	1572	1583	1596	rBV4	38103	84157	3.45%	0.397%
32	6.325	1614	1628	1659	rVB	520908	1113213	45.60%	5.252%
33	6.463	1668	1671	1674	rBV4	1447	1140	0.05%	0.005%
34	6.514	1685	1687	1691	rVB2	1452	914	0.04%	0.004%

Data Path : Z:\VOASRV\HPCHEM1\MSVOA U\DATA\VU041119\
 Data File : VU031073.D
 Acq On : 11 Apr 2019 16:59
 Operator : JC/SP
 Sample : K2277-21ME
 Misc : 5.69µ/5mL/100uL/5.0mL/MSVOA_U/MEOH
 ALS Vial : 64 Sample Multiplier: 1

Instrument :
 MSVOA_U
 ClientSampleId :
 BF2R5ME

Integration Parameters: LSCINT.P

Integrator: RTE
 Smoothing : OFF
 Sampling : 1
 Start Thrs: 0.2
 Stop Thrs : 0

Filtering: 5
 Min Area: 0 % of largest Peak
 Max Peaks: 100
 Peak Location: TOP

If leading or trailing edge < 100 prefer < Baseline drop else tangent >
 Peak separation: 5

Method : Z:\VOASRV\HPCHEM1\MSVOA_U\METHOD\SOMULM040519WMA.M
 Title : VOC Analysis

35	6.820	1777	1782	1788	rVB5	789	970	0.04%	0.005%
36	6.900	1798	1807	1809	rBV8	2294	3020	0.12%	0.014%
37	7.016	1841	1843	1850	rVB5	1384	1225	0.05%	0.006%
38	7.225	1895	1908	1933	rBV	286699	570711	23.38%	2.692%
39	7.363	1949	1951	1955	rVB3	1404	863	0.04%	0.004%
40	7.389	1955	1959	1961	rBV4	1050	690	0.03%	0.003%
41	7.559	1999	2012	2029	rBV	987972	1795126	73.53%	8.469%
42	7.849	2081	2102	2128	rBV2	198918	442299	18.12%	2.087%
43	8.006	2149	2151	2155	rBV4	813	654	0.03%	0.003%
44	8.051	2162	2165	2169	rVB2	1715	1394	0.06%	0.007%
45	8.122	2180	2187	2192	rBV6	947	1265	0.05%	0.006%
46	8.167	2194	2201	2204	rBV3	1858	2156	0.09%	0.010%
47	8.222	2207	2218	2235	rBV	113208	197779	8.10%	0.933%
48	8.318	2237	2248	2286	rBV	854230	1652836	67.70%	7.797%
49	8.665	2353	2356	2359	rBV3	1502	998	0.04%	0.005%
50	8.685	2359	2362	2369	rVV5	771	914	0.04%	0.004%
51	8.807	2395	2400	2402	rBV3	1163	754	0.03%	0.004%
52	8.910	2426	2432	2436	rVV6	1390	1493	0.06%	0.007%
53	8.997	2453	2459	2464	rBV6	789	924	0.04%	0.004%
54	9.032	2466	2470	2474	rBV5	1331	1031	0.04%	0.005%
55	9.090	2474	2488	2515	rBV	1239596	2232932	91.46%	10.534%
56	9.383	2571	2579	2589	rBV5	6010	9919	0.41%	0.047%
57	9.444	2595	2598	2605	rVB7	2060	1655	0.07%	0.008%
58	9.473	2605	2607	2612	rVB2	819	648	0.03%	0.003%
59	9.501	2613	2616	2620	rVB3	1028	660	0.03%	0.003%
60	9.524	2620	2623	2625	rBV2	1258	735	0.03%	0.003%
61	9.653	2659	2663	2669	rVB5	803	803	0.03%	0.004%
62	9.788	2699	2705	2707	rBV3	2115	2342	0.10%	0.011%
63	9.907	2741	2742	2747	rVB2	1085	624	0.03%	0.003%
64	10.051	2783	2787	2793	rVB4	826	723	0.03%	0.003%
65	10.122	2804	2809	2813	rBV3	924	1078	0.04%	0.005%
66	10.222	2833	2840	2844	rBV6	874	1311	0.05%	0.006%
67	10.334	2868	2875	2879	rBV4	1263	1362	0.06%	0.006%
68	10.431	2889	2905	2926	rBV	873980	1409143	57.72%	6.648%
69	10.604	2951	2959	2974	rVB3	8577	15365	0.63%	0.072%
70	10.691	2975	2986	2989	rBV5	1249	1848	0.08%	0.009%
71	10.746	3000	3003	3005	rBV2	817	632	0.03%	0.003%

Data Path : Z:\VOASRV\HPCHEM1\MSVOA U\DATA\VU041119\
 Data File : VU031073.D
 Acq On : 11 Apr 2019 16:59
 Operator : JC/SP
 Sample : K2277-21ME
 Misc : 5.69µ/5mL/100uL/5.0mL/MSVOA_U/MEOH
 ALS Vial : 64 Sample Multiplier: 1

Instrument :
 MSVOA_U
 ClientSampleId :
 BF2R5ME

Integration Parameters: LSCINT.P

Integrator: RTE
 Smoothing : OFF
 Sampling : 1
 Start Thrs: 0.2
 Stop Thrs : 0

Filtering: 5
 Min Area: 0 % of largest Peak
 Max Peaks: 100
 Peak Location: TOP

If leading or trailing edge < 100 prefer < Baseline drop else tangent >
 Peak separation: 5

Method : Z:\VOASRV\HPCHEM1\MSVOA_U\METHOD\SOMULM040519WMA.M
 Title : VOC Analysis

72	10.813	3014	3024	3038	rBV2	34575	51758	2.12%	0.244%
73	10.894	3046	3049	3054	rVB4	1059	1032	0.04%	0.005%
74	10.961	3067	3070	3074	rVB2	806	658	0.03%	0.003%
75	11.119	3114	3119	3122	rBV5	1050	935	0.04%	0.004%
76	11.167	3130	3134	3137	rBV4	1017	760	0.03%	0.004%
77	11.276	3164	3168	3170	rBV3	1034	738	0.03%	0.003%
78	11.337	3184	3187	3191	rBV3	888	891	0.04%	0.004%
79	11.370	3195	3197	3202	rVB2	789	655	0.03%	0.003%
80	11.424	3202	3214	3220	rBV6	8889	15548	0.64%	0.073%
81	11.482	3220	3232	3256	rBV	1409773	2223774	91.09%	10.491%
82	11.858	3337	3349	3374	rBV	1120205	1840929	75.41%	8.685%
83	12.106	3423	3426	3431	rBV6	1166	1109	0.05%	0.005%
84	12.292	3481	3484	3487	rBV4	825	673	0.03%	0.003%
85	12.312	3487	3490	3494	rVV3	847	811	0.03%	0.004%
86	12.476	3532	3541	3542	rBV2	6441	7628	0.31%	0.036%
87	12.665	3594	3600	3602	rBV3	2147	2187	0.09%	0.010%
88	12.826	3647	3650	3656	rVB3	1283	976	0.04%	0.005%
89	12.919	3676	3679	3687	rVV4	901	853	0.03%	0.004%
90	13.627	3896	3899	3904	rVB4	1266	1035	0.04%	0.005%
91	13.714	3922	3926	3929	rVV2	995	918	0.04%	0.004%
92	13.733	3929	3932	3937	rVV3	762	756	0.03%	0.004%
93	13.868	3971	3974	3977	rBV2	1264	1033	0.04%	0.005%
94	13.987	4008	4011	4012	rBV	1282	750	0.03%	0.004%
95	14.006	4014	4017	4021	rBV4	2577	2743	0.11%	0.013%
96	14.276	4094	4101	4107	rVB3	6849	10200	0.42%	0.048%
97	14.405	4138	4141	4146	rBV3	1399	1435	0.06%	0.007%
98	14.723	4236	4240	4243	rBV2	1488	1142	0.05%	0.005%
99	15.032	4333	4336	4337	rBV2	1303	779	0.03%	0.004%
100	15.842	4585	4588	4590	rBV3	1910	1391	0.06%	0.007%

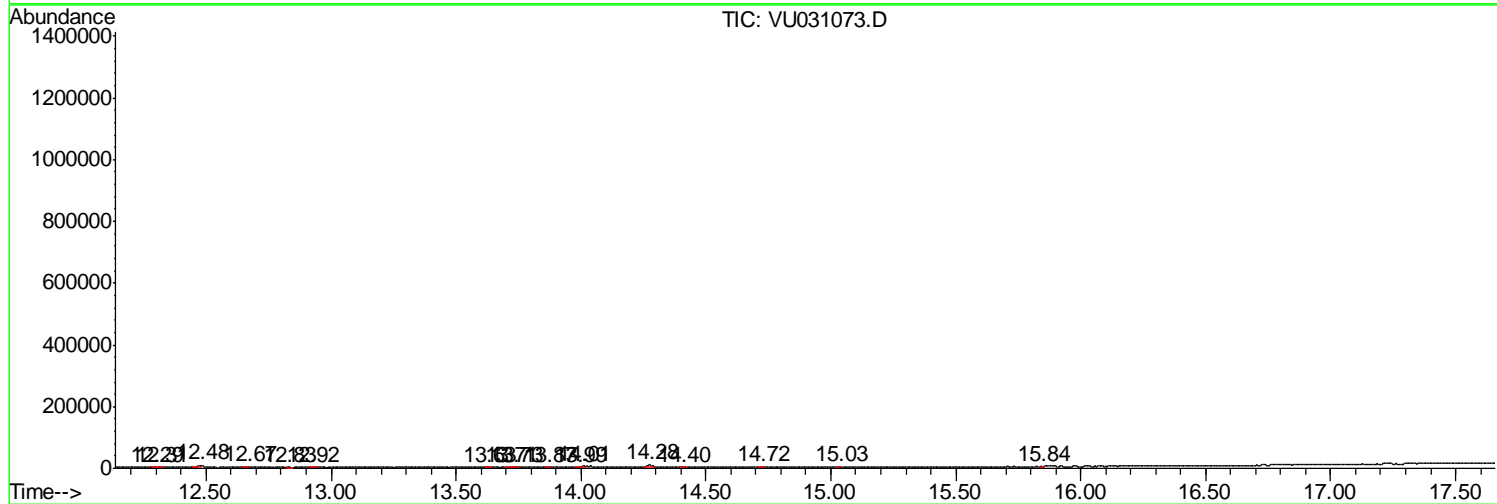
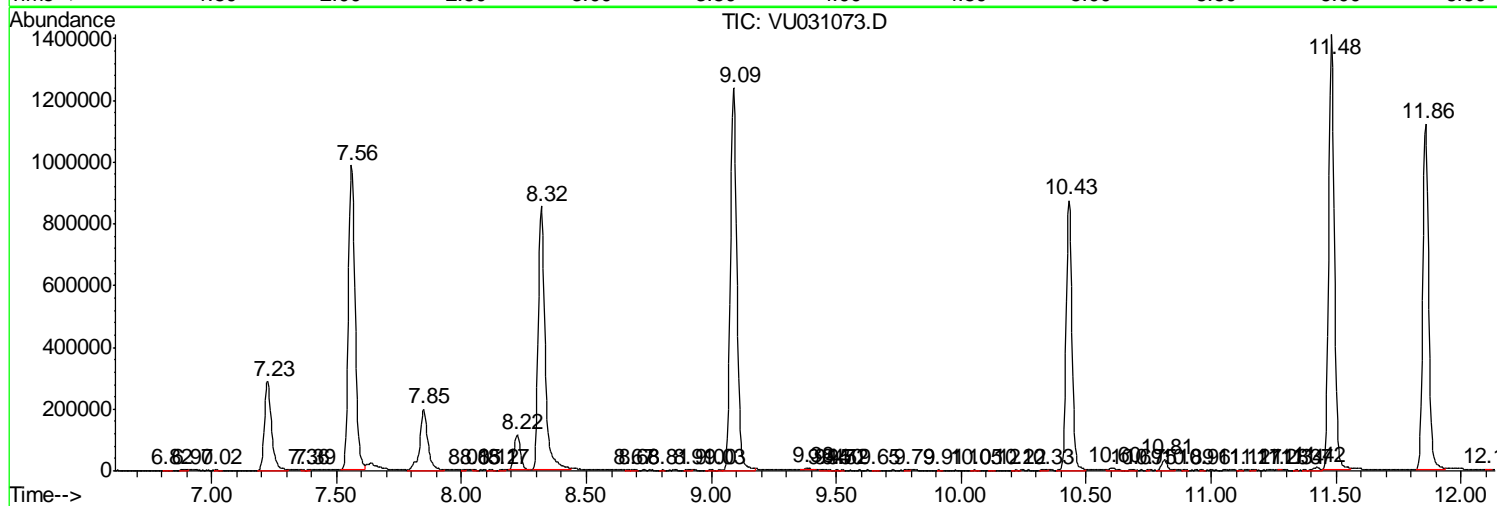
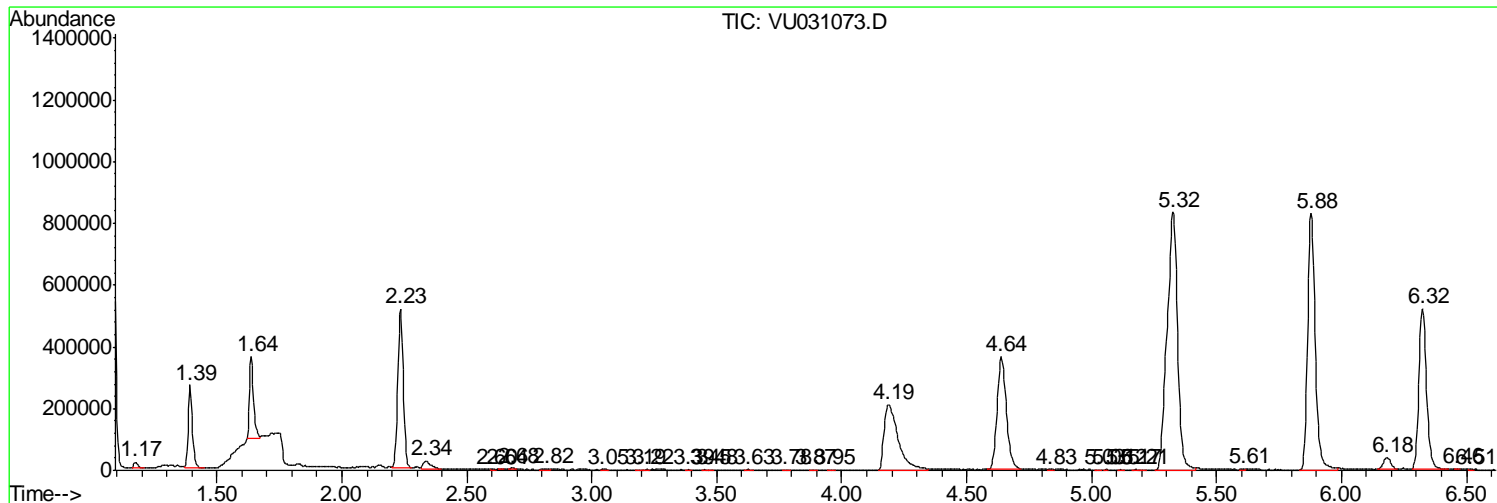
Sum of corrected areas: 21197486

Data Path : Z:\VOASRV\HPCHEM1\MSVOA U\DATA\VU041119\
 Data File : VU031073.D
 Acq On : 11 Apr 2019 16:59
 Operator : JC/SP
 Sample : K2277-21ME
 Misc : 5.69µ/5mL/100uL/5.0mL/MSVOA_U/MEOH
 ALS Vial : 64 Sample Multiplier: 1

Instrument :
 MSVOA_U
Client Sampled :
 BF2R5ME

Quant Method : Z:\VOASRV\HPCHEM1\MSVOA_U\METHOD\SOMULM040519WMA.M
 Quant Title : VOC Analysis

TIC Library : C:\DATABASE\NIST11.L
 TIC Integration Parameters: LSCINT.P



Data Path : Z:\VOASRV\HPCHEM1\MSVOA_U\DATA\VU041119\
Data File : VU031073.D
Acq On : 11 Apr 2019 16:59
Operator : JC/SP
Sample : K2277-21ME
Misc : 5.69g/5mL/100uL/5.0mL/MSVOA_U/MEOH
ALS Vial : 64 Sample Multiplier: 1

Instrument :
MSVOA_U
ClientSampleId :
BF2R5ME

Quant Method : Z:\VOASRV\HPCHEM1\MSVOA_U\METHOD\SOMULM040519WMA.M
Quant Title : VOC Analysis

TIC Library : C:\DATABASE\NIST11.L
TIC Integration Parameters: LSCINT.P

No Library Search Compounds Detected

Data Path : Z:\VOASRV\HPCHEM1\MSVOA_U\DATA\VU041119\
Data File : VU031073.D
Acq On : 11 Apr 2019 16:59
Operator : JC/SP
Sample : K2277-21ME
Misc : 5.69g/5mL/100uL/5.0mL/MSVOA_U/MEOH
ALS Vial : 64 Sample Multiplier: 1

Instrument :
MSVOA_U
ClientSampleId :
BF2R5ME

Quant Method : Z:\VOASRV\HPCHEM1\MSVOA_U\METHOD\SOMULM040519WMA.M
Quant Title : VOC Analysis

TIC Library : C:\DATABASE\NIST11.L
TIC Integration Parameters: LSCINT.P

TIC Top Hit name	RT	EstConc	Units	Response	--Internal Standard--			
					#	RT	Resp	Conc
