

Data Path : Z:\voasrv\HPCHEM1\MSVOA\_U\Data\VU041122\  
 Data File : VU047907.D  
 Acq On : 11 Apr 2022 15:42  
 Operator : SY/MD  
 Sample : N2343-06DL 4X  
 Misc : 5.0mL/MSVOA\_U/WATER  
 ALS Vial : 14 Sample Multiplier: 1

Instrument :  
 MSVOA\_U  
 ClientSampleId :  
 C0HY4DL

Quant Time: Apr 12 02:03:31 2022  
 Quant Method : Z:\voasrv\HPCHEM1\MSVOA\_U\Method\SFAMULM032422WMA.M  
 Quant Title : VOC Analysis  
 QLast Update : Tue Apr 12 01:57:58 2022  
 Response via : Initial Calibration

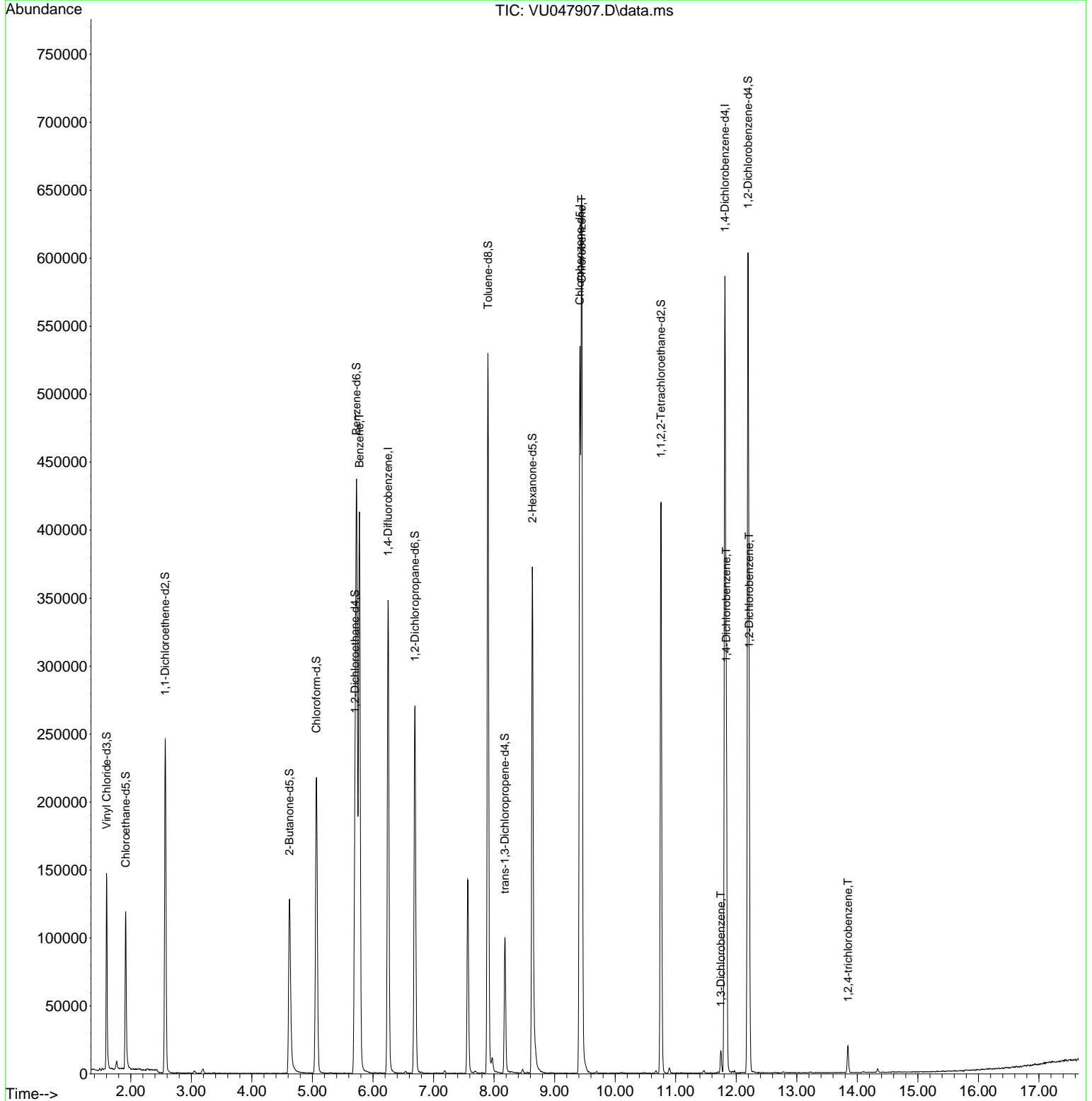
Compound	R.T.	QIon	Response	Conc	Units	Dev(Min)
-----						
Internal Standards						
1) 1,4-Difluorobenzene	6.250	114	297586	50.000	ug/L	0.00
28) Chlorobenzene-d5	9.417	117	310436	50.000	ug/L	0.00
58) 1,4-Dichlorobenzene-d4	11.812	152	163386	50.000	ug/L	0.00
System Monitoring Compounds						
4) Vinyl Chloride-d3	1.601	65	106323	49.269	ug/L	0.00
Spiked Amount	50.000	Range 60 - 135	Recovery	=	98.540%	
7) Chloroethane-d5	1.916	69	93660	55.043	ug/L	0.00
Spiked Amount	50.000	Range 70 - 130	Recovery	=	110.080%	
11) 1,1-Dichloroethene-d2	2.568	63	139572	35.351	ug/L	0.00
Spiked Amount	50.000	Range 60 - 125	Recovery	=	70.700%	
21) 2-Butanone-d5	4.620	46	186020	100.429	ug/L	0.00
Spiked Amount	100.000	Range 40 - 130	Recovery	=	100.430%	
24) Chloroform-d	5.067	84	205153	51.957	ug/L	0.00
Spiked Amount	50.000	Range 70 - 125	Recovery	=	103.920%	
26) 1,2-Dichloroethane-d4	5.703	65	130776	54.001	ug/L	0.00
Spiked Amount	50.000	Range 70 - 125	Recovery	=	108.000%	
32) Benzene-d6	5.729	84	409972	52.484	ug/L	0.00
Spiked Amount	50.000	Range 70 - 125	Recovery	=	104.960%	
36) 1,2-Dichloropropane-d6	6.694	67	131435	54.788	ug/L	0.00
Spiked Amount	50.000	Range 70 - 120	Recovery	=	109.580%	
41) Toluene-d8	7.899	98	360575	47.378	ug/L	0.00
Spiked Amount	50.000	Range 80 - 120	Recovery	=	94.760%	
43) trans-1,3-Dichloroprop...	8.179	79	55648	45.787	ug/L	0.00
Spiked Amount	50.000	Range 60 - 125	Recovery	=	91.580%	
47) 2-Hexanone-d5	8.632	63	131416	93.577	ug/L	0.00
Spiked Amount	100.000	Range 45 - 130	Recovery	=	93.580%	
56) 1,1,2,2-Tetrachloroeth...	10.758	84	206630	50.189	ug/L	0.00
Spiked Amount	50.000	Range 65 - 120	Recovery	=	100.380%	
66) 1,2-Dichlorobenzene-d4	12.195	152	158664	54.584	ug/L	0.00
Spiked Amount	50.000	Range 80 - 120	Recovery	=	109.160%	
-----						
Target Compounds						Qvalue
33) Benzene	5.777	78	401984	44.736	ug/L	100
51) Chlorobenzene	9.446	112	352436	52.646	ug/L	99
64) 1,3-Dichlorobenzene	11.748	146	7653	1.559	ug/L	96
65) 1,4-Dichlorobenzene	11.838	146	100911	19.850	ug/L	99
67) 1,2-Dichlorobenzene	12.214	146	79556	16.200	ug/L	98
70) 1,2,4-trichlorobenzene	13.845	180	7262	2.080	ug/L	96
-----						

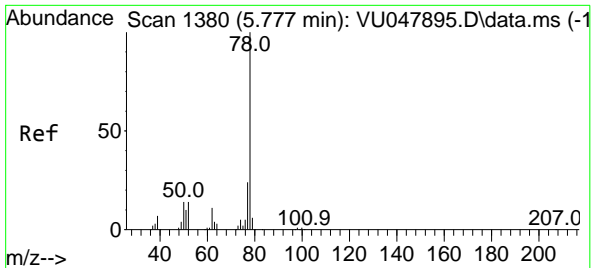
(#) = qualifier out of range (m) = manual integration (+) = signals summed

Data Path : Z:\voasrv\HPCHEM1\MSVOA\_U\Data\VU041122\  
 Data File : VU047907.D  
 Acq On : 11 Apr 2022 15:42  
 Operator : SY/MD  
 Sample : N2343-06DL 4X  
 Misc : 5.0mL/MSVOA\_U/WATER  
 ALS Vial : 14 Sample Multiplier: 1

Instrument :  
 MSVOA\_U  
 ClientSampleId :  
 C0HY4DL

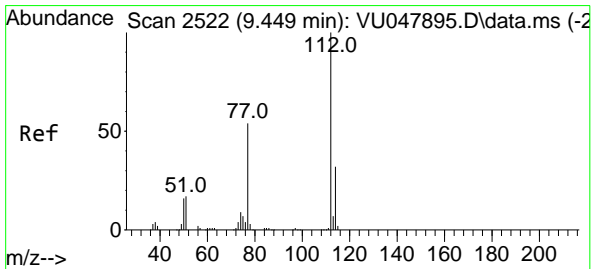
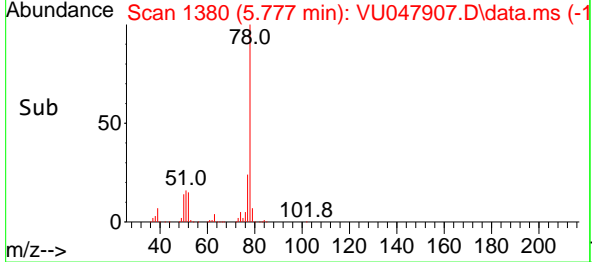
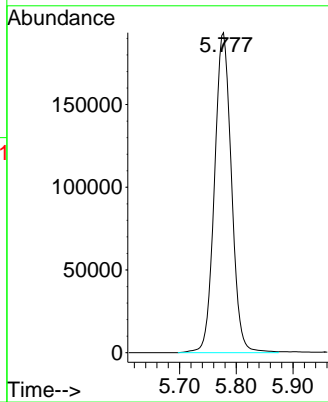
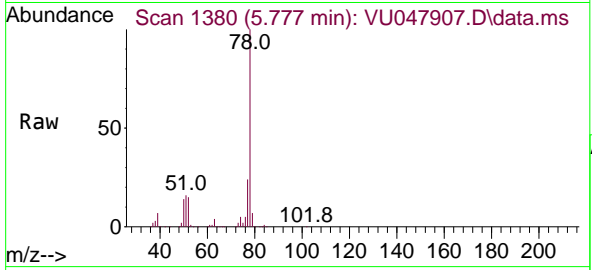
Quant Time: Apr 12 02:03:31 2022  
 Quant Method : Z:\voasrv\HPCHEM1\MSVOA\_U\Method\SFAMULM032422WMA.M  
 Quant Title : VOC Analysis  
 QLast Update : Tue Apr 12 01:57:58 2022  
 Response via : Initial Calibration





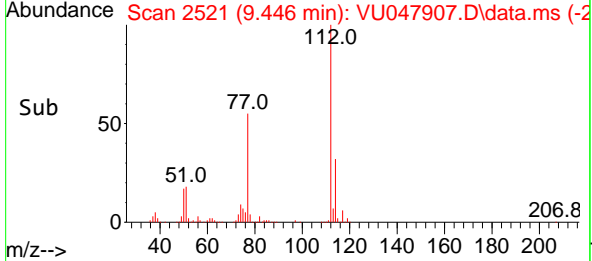
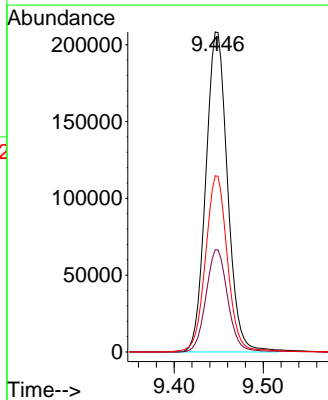
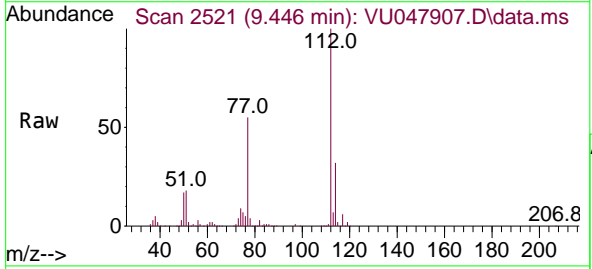
#33  
 Benzene  
 Concen: 44.736 ug/L  
 RT: 5.777 min Scan# 11  
 Delta R.T. 0.000 min  
 Lab File: VU047907.D  
 Acq: 11 Apr 2022 15:42  
 Tgt Ion: 78 Resp: 401984

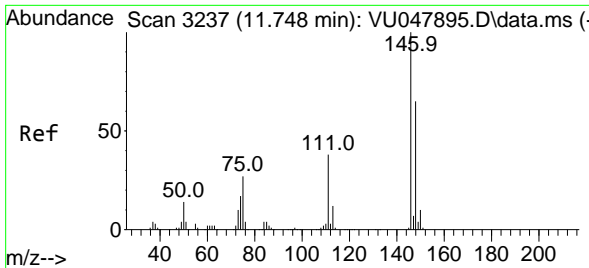
Instrument :  
 MSVOA\_U  
 ClientSampleId :  
 C0HY4DL



#51  
 Chlorobenzene  
 Concen: 52.646 ug/L  
 RT: 9.446 min Scan# 2521  
 Delta R.T. -0.003 min  
 Lab File: VU047907.D  
 Acq: 11 Apr 2022 15:42  
 Tgt Ion:112 Resp: 352436

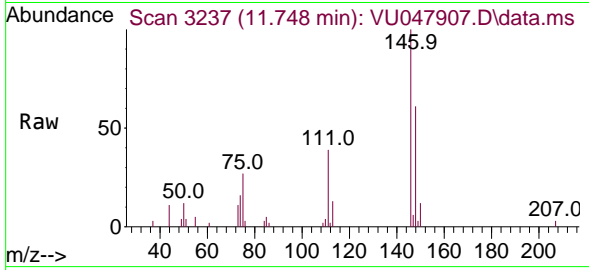
Ion	Ratio	Lower	Upper
112	100		
114	31.9	22.1	41.1
77	55.1	43.4	65.0



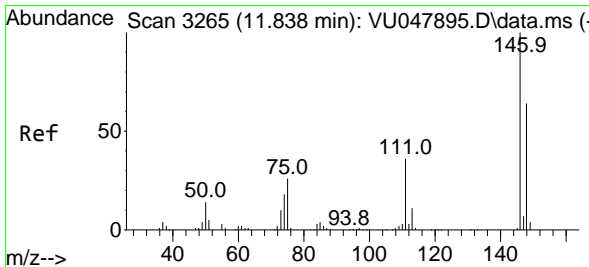
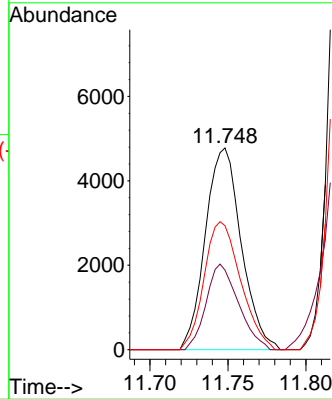
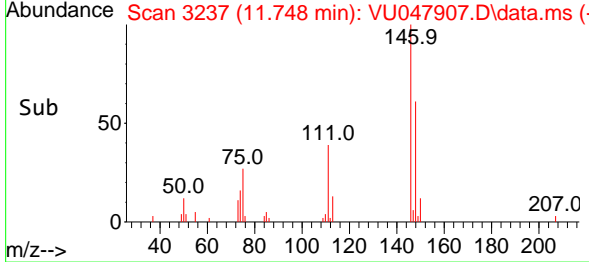


#64  
 1,3-Dichlorobenzene  
 Concen: 1.559 ug/L  
 RT: 11.748 min Scan# 31  
 Delta R.T. 0.000 min  
 Lab File: VU047907.D  
 Acq: 11 Apr 2022 15:42

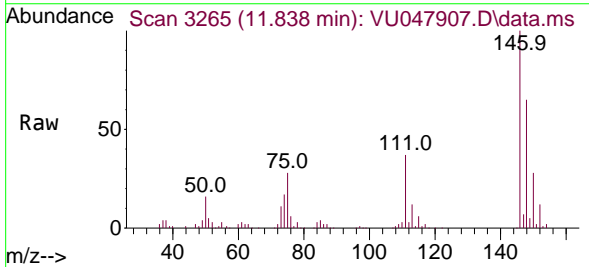
Instrument :  
 MSVOA\_U  
 ClientSampleId :  
 C0HY4DL



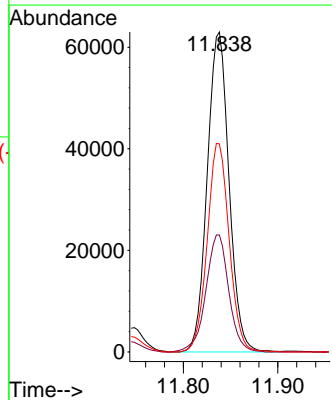
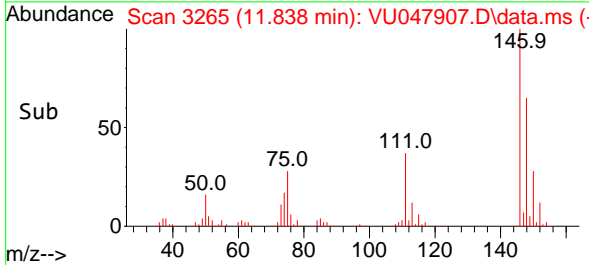
Tgt Ion:146 Resp: 7653  
 Ion Ratio Lower Upper  
 146 100  
 111 41.6 26.7 49.7  
 148 61.5 44.4 82.5

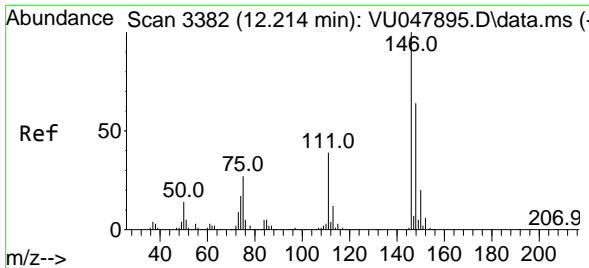


#65  
 1,4-Dichlorobenzene  
 Concen: 19.850 ug/L  
 RT: 11.838 min Scan# 3265  
 Delta R.T. 0.000 min  
 Lab File: VU047907.D  
 Acq: 11 Apr 2022 15:42



Tgt Ion:146 Resp: 100911  
 Ion Ratio Lower Upper  
 146 100  
 111 36.6 25.3 47.1  
 148 65.1 44.5 82.7

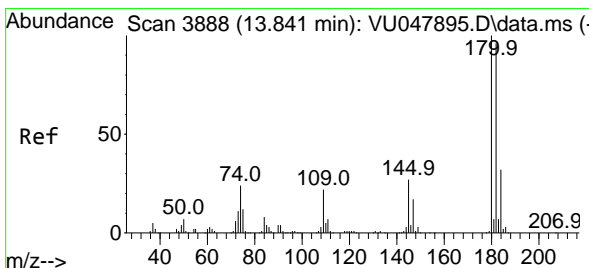
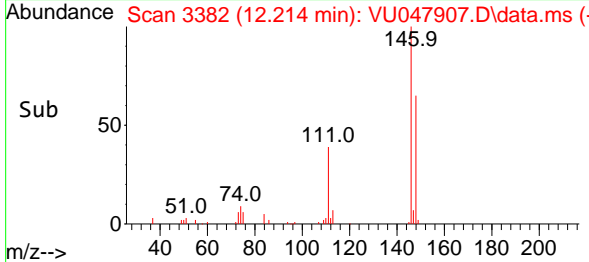
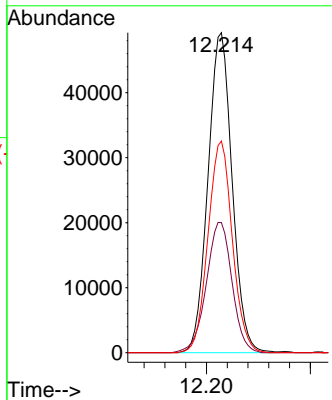
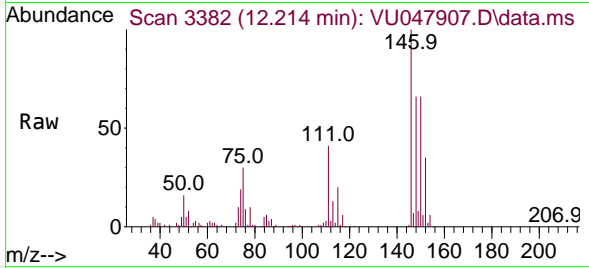




#67  
 1,2-Dichlorobenzene  
 Concen: 16.200 ug/L  
 RT: 12.214 min Scan# 3111  
 Delta R.T. 0.000 min  
 Lab File: VU047907.D  
 Acq: 11 Apr 2022 15:42

Instrument : MSVOA\_U  
 ClientSampleId : C0HY4DL

Tgt Ion	Resp	Lower	Upper
146	79556	100	
111	40.7	31.7	47.5
148	66.2	51.4	77.2



#70  
 1,2,4-trichlorobenzene  
 Concen: 2.080 ug/L  
 RT: 13.845 min Scan# 3889  
 Delta R.T. 0.003 min  
 Lab File: VU047907.D  
 Acq: 11 Apr 2022 15:42

Tgt Ion	Resp	Lower	Upper
180	7262	100	
182	91.3	76.2	114.2
145	30.5	21.8	32.8

