

Data Path : Z:\voasrv\HPCHEM1\MSVOA\_U\Data\VU041122\  
 Data File : VU047916.D  
 Acq On : 11 Apr 2022 19:09  
 Operator : SY/MD  
 Sample : N2280-01ME  
 Misc : 3.68g/5.0mL/100uL/5.0mL/MSVOA\_U/MEOH  
 ALS Vial : 23 Sample Multiplier: 1

Instrument :  
 MSVOA\_U  
 ClientSampleId :  
 BFFC0ME

Integration Parameters: LSCINT.P

Integrator: RTE  
 Smoothing : OFF Filtering: 5  
 Sampling : 1 Min Area: 0 % of largest Peak  
 Start Thrs: 0.2 Max Peaks: 100  
 Stop Thrs : 0 Peak Location: TOP

If leading or trailing edge < 100 prefer < Baseline drop else tangent >  
 Peak separation: 5

Method : Z:\voasrv\HPCHEM1\MSVOA\_U\Method\SFAMULM032422WMA.M  
 Title : VOC Analysis

Signal : TIC: VU047916.D\data.ms

peak #	R.T. min	first scan	max scan	last scan	PK TY	peak height	corr. area	corr. % max.	% of total
1	1.597	72	80	116	rVB	118049	254382	12.87%	1.784%
2	1.896	167	173	207	rBV	71908	185412	9.38%	1.301%
3	2.546	361	375	389	rBV	346425	606134	30.67%	4.252%
4	2.961	496	504	509	rBV4	721	1206	0.06%	0.008%
5	3.041	519	529	538	rVB6	1917	3913	0.20%	0.027%
6	3.160	564	566	568	rBV	429	271	0.01%	0.002%
7	3.234	586	589	596	rVB3	254	303	0.02%	0.002%
8	3.469	655	662	664	rBV	393	363	0.02%	0.003%
9	3.514	672	676	679	rVB2	345	314	0.02%	0.002%
10	3.546	679	686	688	rBV2	482	465	0.02%	0.003%
11	3.700	728	734	737	rBV2	320	258	0.01%	0.002%
12	3.867	782	786	789	rBV2	248	278	0.01%	0.002%
13	3.919	797	802	808	rVB2	341	316	0.02%	0.002%
14	4.173	877	881	886	rBV2	297	303	0.02%	0.002%
15	4.301	918	921	924	rBV2	349	217	0.01%	0.002%
16	4.642	1012	1027	1082	rBV	143798	541284	27.39%	3.797%
17	5.063	1140	1158	1181	rBV	336737	779203	39.43%	5.466%
18	5.211	1201	1204	1209	rVB3	493	460	0.02%	0.003%
19	5.272	1220	1223	1224	rBV2	495	270	0.01%	0.002%
20	5.330	1236	1241	1244	rBV2	301	249	0.01%	0.002%
21	5.382	1253	1257	1259	rVB2	349	251	0.01%	0.002%
22	5.510	1293	1297	1303	rBV2	220	225	0.01%	0.002%
23	5.719	1341	1362	1391	rBV2	769199	1976033	100.00%	13.861%
24	5.899	1414	1418	1421	rBV2	265	242	0.01%	0.002%
25	5.977	1430	1442	1458	rBV4	10927	26924	1.36%	0.189%
26	6.076	1471	1473	1478	rVB	529	289	0.01%	0.002%
27	6.105	1478	1482	1485	rBV3	246	246	0.01%	0.002%
28	6.250	1512	1527	1550	rVV	324321	654230	33.11%	4.589%
29	6.407	1572	1576	1579	rVB2	496	358	0.02%	0.003%
30	6.459	1589	1592	1601	rVB2	450	452	0.02%	0.003%
31	6.526	1601	1613	1627	rBV6	5295	10965	0.55%	0.077%
32	6.600	1627	1636	1649	rVB5	4351	9653	0.49%	0.068%
33	6.690	1649	1664	1687	rBV	432847	888035	44.94%	6.229%
34	6.919	1731	1735	1738	rBV3	394	307	0.02%	0.002%
35	6.951	1743	1745	1749	rVB	362	258	0.01%	0.002%
36	6.983	1749	1755	1760	rBV2	505	648	0.03%	0.005%

Data Path : Z:\voasrv\HPCHEM1\MSVOA\_U\Data\VU041122\  
 Data File : VU047916.D  
 Acq On : 11 Apr 2022 19:09  
 Operator : SY/MD  
 Sample : N2280-01ME  
 Misc : 3.68g/5.0mL/100uL/5.0mL/MSVOA\_U/MEOH  
 ALS Vial : 23 Sample Multiplier: 1

Instrument :  
 MSVOA\_U  
 ClientSampleId :  
 BFFC0ME

Integration Parameters: LSCINT.P

Integrator: RTE  
 Smoothing : OFF Filtering: 5  
 Sampling : 1 Min Area: 0 % of largest Peak  
 Start Thrs: 0.2 Max Peaks: 100  
 Stop Thrs : 0 Peak Location: TOP

If leading or trailing edge < 100 prefer < Baseline drop else tangent >  
 Peak separation: 5

Method : Z:\voasrv\HPCHEM1\MSVOA\_U\Method\SFAMULM032422WMA.M  
 Title : VOC Analysis

37	7.034	1767	1771	1774	rBV3	284	322	0.02%	0.002%
38	7.208	1810	1825	1849	rBV5	9081	32887	1.66%	0.231%
39	7.327	1860	1862	1869	rVB4	763	881	0.04%	0.006%
40	7.362	1869	1873	1877	rBV2	358	264	0.01%	0.002%
41	7.401	1879	1885	1888	rBV3	267	306	0.02%	0.002%
42	7.497	1912	1915	1917	rBV	384	224	0.01%	0.002%
43	7.568	1923	1937	1965	rBV	211192	419674	21.24%	2.944%
44	7.694	1967	1976	1986	rBV7	1677	3796	0.19%	0.027%
45	7.780	2000	2003	2006	rVB2	390	234	0.01%	0.002%
46	7.899	2025	2040	2056	rBV	873613	1575418	79.73%	11.051%
47	8.186	2116	2129	2152	rBV	132381	290009	14.68%	2.034%
48	8.343	2176	2178	2181	rBV3	702	582	0.03%	0.004%
49	8.411	2195	2199	2204	rVB5	526	567	0.03%	0.004%
50	8.465	2211	2216	2217	rBV4	564	440	0.02%	0.003%
51	8.533	2233	2237	2241	rBV3	416	417	0.02%	0.003%
52	8.665	2257	2278	2308	rBV	599304	1286296	65.09%	9.023%
53	8.803	2314	2321	2335	rVB5	4011	8200	0.41%	0.058%
54	8.944	2363	2365	2371	rVB4	644	569	0.03%	0.004%
55	9.009	2382	2385	2387	rBV	372	228	0.01%	0.002%
56	9.124	2415	2421	2424	rBV3	354	344	0.02%	0.002%
57	9.202	2442	2445	2449	rVB2	350	264	0.01%	0.002%
58	9.301	2472	2476	2479	rBV2	271	226	0.01%	0.002%
59	9.423	2499	2514	2535	rBV	442220	888367	44.96%	6.231%
60	9.568	2556	2559	2562	rBV3	637	500	0.03%	0.004%
61	9.697	2594	2599	2600	rBV	591	476	0.02%	0.003%
62	9.867	2649	2652	2657	rVB	361	320	0.02%	0.002%
63	9.964	2678	2682	2685	rBV2	313	274	0.01%	0.002%
64	9.983	2685	2688	2693	rVB	268	278	0.01%	0.002%
65	10.227	2760	2764	2766	rBV	392	304	0.02%	0.002%
66	10.465	2830	2838	2840	rBV2	712	706	0.04%	0.005%
67	10.549	2859	2864	2866	rBV4	429	354	0.02%	0.002%
68	10.600	2877	2880	2881	rBV	340	231	0.01%	0.002%
69	10.629	2884	2889	2892	rVV3	976	991	0.05%	0.007%
70	10.671	2892	2902	2912	rVB4	5605	9658	0.49%	0.068%
71	10.767	2919	2932	2949	rBV	743394	1199048	60.68%	8.411%
72	10.867	2959	2963	2965	rBV3	860	758	0.04%	0.005%
73	10.973	2992	2996	3001	rBV	458	444	0.02%	0.003%
74	11.012	3006	3008	3012	rVV	406	275	0.01%	0.002%
75	11.118	3033	3041	3048	rBV5	4129	6693	0.34%	0.047%
76	11.208	3061	3069	3073	rVB3	559	679	0.03%	0.005%

Data Path : Z:\voasrv\HPCHEM1\MSVOA\_U\Data\VU041122\  
 Data File : VU047916.D  
 Acq On : 11 Apr 2022 19:09  
 Operator : SY/MD  
 Sample : N2280-01ME  
 Misc : 3.68g/5.0mL/100uL/5.0mL/MSVOA\_U/MEOH  
 ALS Vial : 23 Sample Multiplier: 1

Instrument :  
 MSVOA\_U  
 ClientSampleId :  
 BFFC0ME

Integration Parameters: LSCINT.P

Integrator: RTE  
 Smoothing : OFF Filtering: 5  
 Sampling : 1 Min Area: 0 % of largest Peak  
 Start Thrs: 0.2 Max Peaks: 100  
 Stop Thrs : 0 Peak Location: TOP

If leading or trailing edge < 100 prefer < Baseline drop else tangent >  
 Peak separation: 5

Method : Z:\voasrv\HPCHEM1\MSVOA\_U\Method\SFAMULM032422WMA.M  
 Title : VOC Analysis

77	11.308	3097	3100	3109	rVB3	1118	1351	0.07%	0.009%
78	11.346	3110	3112	3115	rBV2	357	230	0.01%	0.002%
79	11.378	3115	3122	3127	rVV8	1044	1372	0.07%	0.010%
80	11.417	3130	3134	3140	rVV4	890	1142	0.06%	0.008%
81	11.459	3140	3147	3158	rVB6	3482	5821	0.29%	0.041%
82	11.581	3178	3185	3189	rBV4	1530	1744	0.09%	0.012%
83	11.700	3213	3222	3230	rBV5	2903	4223	0.21%	0.030%
84	11.819	3245	3259	3279	rBV	579922	932432	47.19%	6.541%
85	11.922	3283	3291	3302	rBV7	8760	15428	0.78%	0.108%
86	12.082	3336	3341	3344	rVB2	500	398	0.02%	0.003%
87	12.102	3344	3347	3350	rBV2	703	570	0.03%	0.004%
88	12.198	3359	3377	3395	rBV	972897	1567430	79.32%	10.995%
89	12.398	3437	3439	3442	rBV3	625	468	0.02%	0.003%
90	12.533	3477	3481	3482	rBV	343	254	0.01%	0.002%
91	12.578	3491	3495	3497	rBV3	293	266	0.01%	0.002%
92	12.639	3512	3514	3516	rBV2	385	233	0.01%	0.002%
93	12.774	3550	3556	3562	rVB	1117	1193	0.06%	0.008%
94	13.047	3638	3641	3643	rBV	293	217	0.01%	0.002%
95	13.491	3776	3779	3782	rBV3	260	232	0.01%	0.002%
96	13.844	3882	3889	3899	rVB6	2085	3348	0.17%	0.023%
97	13.951	3918	3922	3923	rBV2	360	242	0.01%	0.002%
98	14.989	4243	4245	4249	rBV3	430	236	0.01%	0.002%
99	15.465	4390	4393	4395	rBV3	706	455	0.02%	0.003%
100	16.121	4589	4597	4608	rVB2	26740	39722	2.01%	0.279%

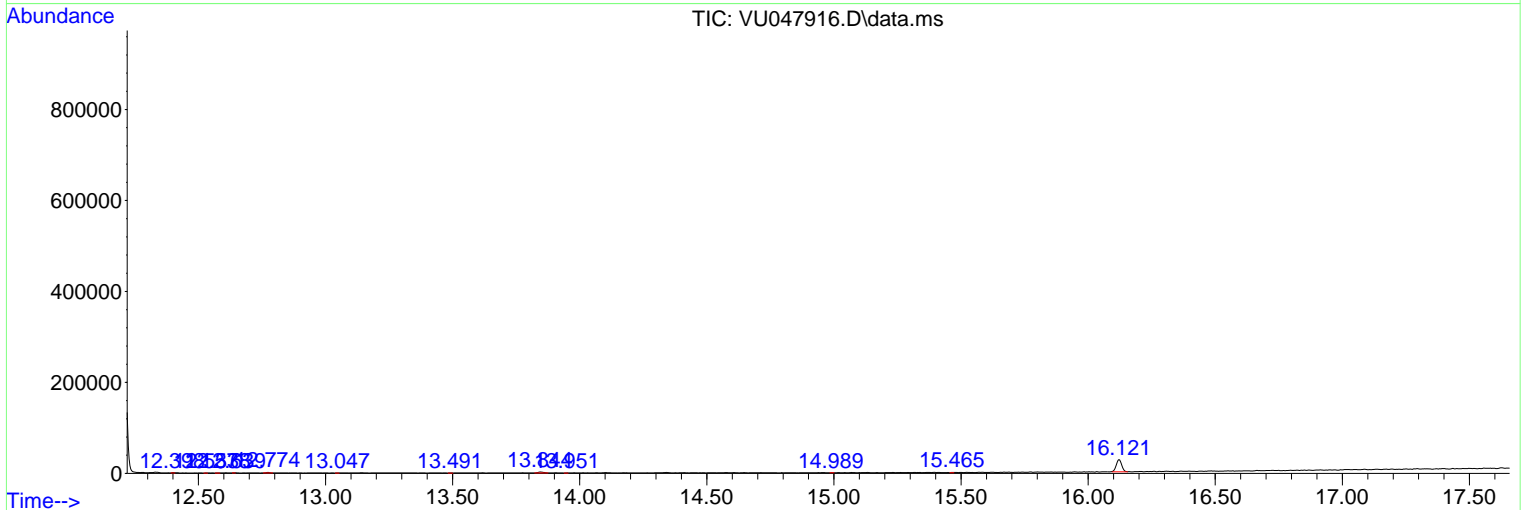
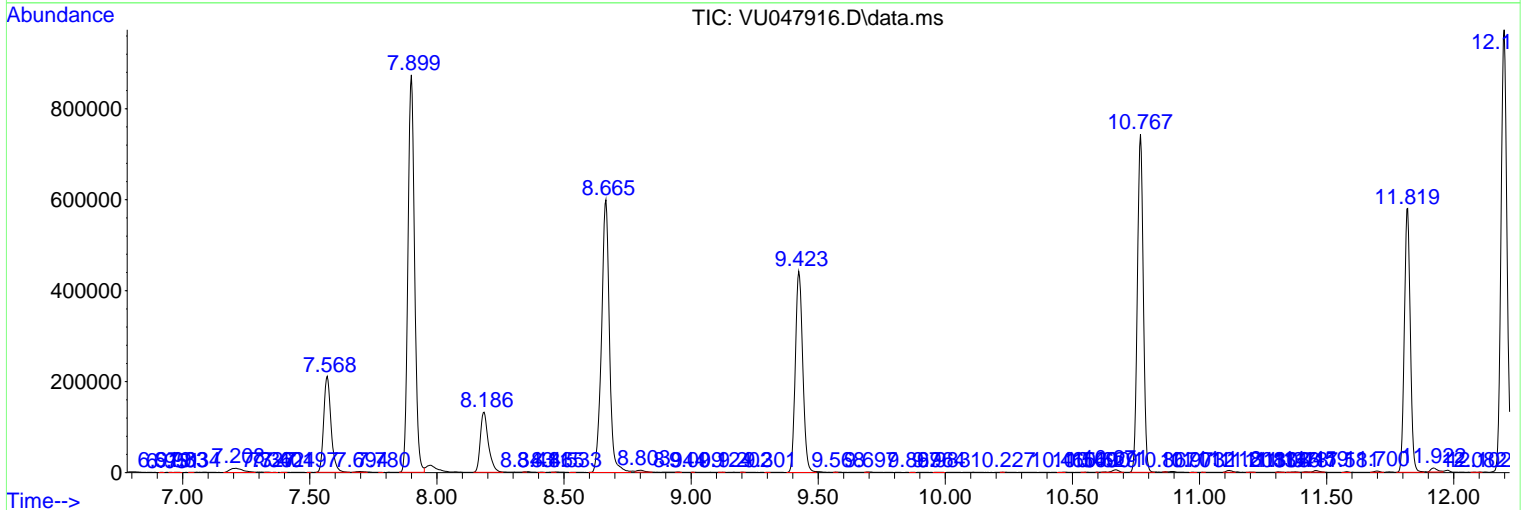
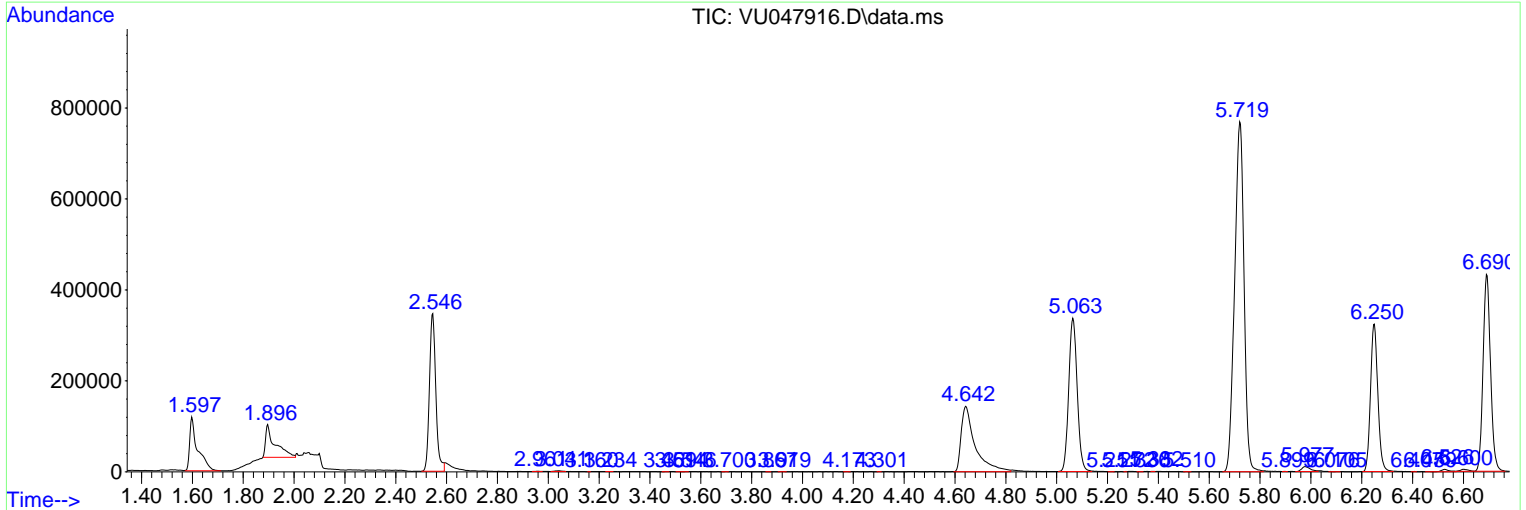
Sum of corrected areas: 14256228

Data Path : Z:\voasrv\HPCHEM1\MSVOA\_U\Data\VU041122\  
 Data File : VU047916.D  
 Acq On : 11 Apr 2022 19:09  
 Operator : SY/MD  
 Sample : N2280-01ME  
 Misc : 3.68g/5.0mL/100uL/5.0mL/MSVOA\_U/MEOH  
 ALS Vial : 23 Sample Multiplier: 1

Instrument :  
 MSVOA\_U  
 ClientSampleId :  
 BFFC0ME

Quant Method : Z:\voasrv\HPCHEM1\MSVOA\_U\Method\SFAMULM032422WMA.M  
 Quant Title : VOC Analysis

TIC Library : C:\Database\NIST20.L  
 TIC Integration Parameters: LSCINT.P



Data Path : Z:\voasrv\HPCHEM1\MSVOA\_U\Data\VU041122\  
Data File : VU047916.D  
Acq On : 11 Apr 2022 19:09  
Operator : SY/MD  
Sample : N2280-01ME  
Misc : 3.68g/5.0mL/100uL/5.0mL/MSVOA\_U/MEOH  
ALS Vial : 23 Sample Multiplier: 1

**Instrument :**  
MSVOA\_U  
**ClientSampleId :**  
BFFC0ME

Quant Method : Z:\voasrv\HPCHEM1\MSVOA\_U\Method\SFAMULM032422WMA.M  
Quant Title : VOC Analysis

TIC Library : C:\Database\NIST20.L  
TIC Integration Parameters: LSCINT.P

No Library Search Compounds Detected

\*\*\*\*\*

Data Path : Z:\voasrv\HPCHEM1\MSVOA\_U\Data\VU041122\  
Data File : VU047916.D  
Acq On : 11 Apr 2022 19:09  
Operator : SY/MD  
Sample : N2280-01ME  
Misc : 3.68g/5.0mL/100uL/5.0mL/MSVOA\_U/MEOH  
ALS Vial : 23 Sample Multiplier: 1

Instrument :  
MSVOA\_U  
ClientSampleId :  
BFFC0ME

Quant Method : Z:\voasrv\HPCHEM1\MSVOA\_U\Method\SFAMULM032422WMA.M  
Quant Title : VOC Analysis

TIC Library : C:\Database\NIST0.L  
TIC Integration Parameters: LSCINT.P

TIC Top Hit name	RT	EstConc	Units	Response	--Internal Standard--		
					#	RT	Resp Conc

---