

Data Path : Z:\voasrv\HPCHEM1\MSVOA_U\Data\VU041122\
 Data File : VU047920.D
 Acq On : 11 Apr 2022 21:04
 Operator : SY/MD
 Sample : VU0411MBL02
 Misc : 5.00g/5.0mL/100uL/5.0mL/MSVOA_U/MEOH
 ALS Vial : 28 Sample Multiplier: 1

Instrument :
 MSVOA_U
 ClientSampleId :
 VBLK083

Integration Parameters: LSCINT.P

Integrator: RTE
 Smoothing : OFF Filtering: 5
 Sampling : 1 Min Area: 0 % of largest Peak
 Start Thrs: 0.2 Max Peaks: 100
 Stop Thrs : 0 Peak Location: TOP

If leading or trailing edge < 100 prefer < Baseline drop else tangent >
 Peak separation: 5

Method : Z:\voasrv\HPCHEM1\MSVOA_U\Method\SFAMULM032422WMA.M
 Title : VOC Analysis

Signal : TIC: VU047920.D\data.ms

peak #	R.T. min	first scan	max scan	last scan	PK TY	peak height	corr. area	corr. % max.	% of total
1	1.601	74	81	98	rBV	155572	178855	14.21%	1.837%
2	1.916	170	179	200	rBV	125657	175553	13.95%	1.803%
3	2.568	370	382	400	rBV	265230	437793	34.79%	4.497%
4	2.684	410	418	419	rBV5	553	614	0.05%	0.006%
5	2.797	445	453	462	rVB3	1436	2534	0.20%	0.026%
6	2.835	462	465	468	rVB2	390	318	0.03%	0.003%
7	2.858	468	472	475	rBV2	397	318	0.03%	0.003%
8	2.880	476	479	483	rBV	236	209	0.02%	0.002%
9	2.957	498	503	506	rBV3	403	460	0.04%	0.005%
10	3.047	525	531	532	rBV	1038	912	0.07%	0.009%
11	3.125	553	555	561	rVB2	228	202	0.02%	0.002%
12	3.173	566	570	572	rBV2	483	424	0.03%	0.004%
13	3.330	617	619	623	rVV2	408	233	0.02%	0.002%
14	3.356	623	627	639	rVB5	936	1412	0.11%	0.015%
15	3.427	644	649	651	rBV2	255	289	0.02%	0.003%
16	3.594	697	701	707	rVB2	339	385	0.03%	0.004%
17	3.623	707	710	715	rBV3	266	205	0.02%	0.002%
18	3.652	715	719	722	rBV2	253	218	0.02%	0.002%
19	3.855	777	782	784	rBV2	394	327	0.03%	0.003%
20	3.867	784	786	792	rVB2	505	427	0.03%	0.004%
21	3.896	792	795	797	rBV2	310	258	0.02%	0.003%
22	4.170	874	880	883	rBV2	209	216	0.02%	0.002%
23	4.350	933	936	940	rBV	276	249	0.02%	0.003%
24	4.446	962	966	969	rBV2	288	229	0.02%	0.002%
25	4.620	1008	1020	1053	rBV	129460	317136	25.20%	3.257%
26	5.067	1142	1159	1186	rBV	230733	501604	39.86%	5.152%
27	5.301	1222	1232	1236	rBV3	641	927	0.07%	0.010%
28	5.388	1256	1259	1265	rBV3	484	430	0.03%	0.004%
29	5.539	1301	1306	1309	rBV3	431	408	0.03%	0.004%
30	5.729	1342	1365	1395	rBV2	460563	1258293	100.00%	12.924%
31	6.092	1475	1478	1481	rBV2	260	215	0.02%	0.002%
32	6.108	1481	1483	1486	rVV	415	252	0.02%	0.003%
33	6.250	1509	1527	1556	rBV	355471	669287	53.19%	6.874%
34	6.526	1604	1613	1614	rBV4	1312	1169	0.09%	0.012%
35	6.623	1641	1643	1648	rBV	330	202	0.02%	0.002%
36	6.694	1650	1665	1683	rBV	287165	561083	44.59%	5.763%

Data Path : Z:\voasrv\HPCHEM1\MSVOA_U\Data\VU041122\
 Data File : VU047920.D
 Acq On : 11 Apr 2022 21:04
 Operator : SY/MD
 Sample : VU0411MBL02
 Misc : 5.00g/5.0mL/100uL/5.0mL/MSVOA_U/MEOH
 ALS Vial : 28 Sample Multiplier: 1

Instrument :
 MSVOA_U
 ClientSampleId :
 VBLK083

Integration Parameters: LSCINT.P

Integrator: RTE
 Smoothing : OFF
 Sampling : 1
 Start Thrs: 0.2
 Stop Thrs : 0

Filtering: 5
 Min Area: 0 % of largest Peak
 Max Peaks: 100
 Peak Location: TOP

If leading or trailing edge < 100 prefer < Baseline drop else tangent >
 Peak separation: 5

Method : Z:\voasrv\HPCHEM1\MSVOA_U\Method\SFAMULM032422WMA.M
 Title : VOC Analysis

37	7.041	1768	1773	1775	rBV2	466	454	0.04%	0.005%
38	7.189	1810	1819	1832	rVB5	2361	4106	0.33%	0.042%
39	7.282	1845	1848	1853	rVB2	353	262	0.02%	0.003%
40	7.340	1860	1866	1869	rVB3	362	433	0.03%	0.004%
41	7.385	1875	1880	1884	rBV	369	424	0.03%	0.004%
42	7.491	1908	1913	1919	rBV2	250	363	0.03%	0.004%
43	7.568	1924	1937	1963	rVV	144824	259011	20.58%	2.660%
44	7.687	1967	1974	1979	rVB6	1260	1759	0.14%	0.018%
45	7.790	1999	2006	2014	rBV6	1598	2495	0.20%	0.026%
46	7.899	2025	2040	2056	rBV	564801	980656	77.94%	10.072%
47	8.179	2116	2127	2148	rBV	101678	175859	13.98%	1.806%
48	8.555	2236	2244	2245	rBV5	1105	1112	0.09%	0.011%
49	8.632	2255	2268	2310	rBV	376667	714671	56.80%	7.340%
50	8.816	2322	2325	2332	rVB5	620	453	0.04%	0.005%
51	8.845	2332	2334	2338	rVB3	493	254	0.02%	0.003%
52	8.861	2338	2339	2342	rBV2	326	209	0.02%	0.002%
53	8.925	2353	2359	2367	rVB6	794	1426	0.11%	0.015%
54	8.960	2367	2370	2372	rBV2	368	293	0.02%	0.003%
55	8.993	2377	2380	2387	rVB2	377	312	0.02%	0.003%
56	9.050	2395	2398	2401	rVB2	500	323	0.03%	0.003%
57	9.192	2439	2442	2446	rBV2	405	204	0.02%	0.002%
58	9.247	2451	2459	2464	rBV2	469	534	0.04%	0.005%
59	9.337	2484	2487	2490	rVB	398	262	0.02%	0.003%
60	9.417	2498	2512	2537	rBV	518963	887548	70.54%	9.116%
61	9.568	2555	2559	2568	rVB3	1128	1531	0.12%	0.016%
62	9.697	2590	2599	2607	rVB4	1972	3127	0.25%	0.032%
63	9.742	2609	2613	2618	rVB2	237	213	0.02%	0.002%
64	9.886	2655	2658	2663	rBV2	265	229	0.02%	0.002%
65	10.034	2700	2704	2705	rBV2	308	219	0.02%	0.002%
66	10.105	2719	2726	2735	rVV6	1661	2910	0.23%	0.030%
67	10.179	2746	2749	2752	rBV	215	195	0.02%	0.002%
68	10.230	2763	2765	2767	rBV2	368	192	0.02%	0.002%
69	10.484	2839	2844	2852	rVB3	1211	1401	0.11%	0.014%
70	10.539	2856	2861	2863	rBV3	283	279	0.02%	0.003%
71	10.636	2885	2891	2898	rBV3	1780	2965	0.24%	0.030%
72	10.758	2916	2929	2946	rBV	427538	702935	55.86%	7.220%
73	10.880	2964	2967	2968	rBV2	528	325	0.03%	0.003%
74	10.896	2969	2972	2979	rVB	1009	1018	0.08%	0.010%
75	11.089	3027	3032	3039	rVB3	801	959	0.08%	0.010%
76	11.156	3049	3053	3056	rBV2	384	343	0.03%	0.004%

Data Path : Z:\voasrv\HPCHEM1\MSVOA_U\Data\VU041122\
 Data File : VU047920.D
 Acq On : 11 Apr 2022 21:04
 Operator : SY/MD
 Sample : VU0411MBL02
 Misc : 5.00g/5.0mL/100uL/5.0mL/MSVOA_U/MEOH
 ALS Vial : 28 Sample Multiplier: 1

Instrument :
 MSVOA_U
 ClientSampleId :
 VBLK083

Integration Parameters: LSCINT.P

Integrator: RTE
 Smoothing : OFF Filtering: 5
 Sampling : 1 Min Area: 0 % of largest Peak
 Start Thrs: 0.2 Max Peaks: 100
 Stop Thrs : 0 Peak Location: TOP

If leading or trailing edge < 100 prefer < Baseline drop else tangent >
 Peak separation: 5

Method : Z:\voasrv\HPCHEM1\MSVOA_U\Method\SFAMULM032422WMA.M
 Title : VOC Analysis

77	11.337	3106	3109	3113	rBV3	301	273	0.02%	0.003%
78	11.378	3118	3122	3127	rBV2	374	399	0.03%	0.004%
79	11.414	3130	3133	3136	rVB	355	269	0.02%	0.003%
80	11.472	3142	3151	3161	rVB5	2952	4406	0.35%	0.045%
81	11.587	3184	3187	3190	rBV3	357	251	0.02%	0.003%
82	11.700	3217	3222	3225	rVB3	612	561	0.04%	0.006%
83	11.748	3229	3237	3245	rBV3	2907	4258	0.34%	0.044%
84	11.812	3245	3257	3279	rVV	555687	887896	70.56%	9.120%
85	11.919	3288	3290	3292	rBV3	552	295	0.02%	0.003%
86	11.967	3303	3305	3306	rBV2	785	353	0.03%	0.004%
87	12.009	3314	3318	3320	rBV2	296	233	0.02%	0.002%
88	12.195	3362	3376	3397	rBV	556889	925511	73.55%	9.506%
89	12.378	3430	3433	3436	rVB2	336	249	0.02%	0.003%
90	12.401	3437	3440	3443	rVV2	468	342	0.03%	0.004%
91	12.423	3443	3447	3452	rVB3	499	477	0.04%	0.005%
92	12.536	3479	3482	3487	rBV2	289	299	0.02%	0.003%
93	12.729	3539	3542	3546	rVV	316	233	0.02%	0.002%
94	12.909	3596	3598	3605	rBV2	264	281	0.02%	0.003%
95	12.996	3623	3625	3633	rVB5	809	730	0.06%	0.007%
96	13.160	3670	3676	3677	rBV2	318	319	0.03%	0.003%
97	13.224	3689	3696	3709	rVB3	3391	4860	0.39%	0.050%
98	13.848	3881	3890	3902	rVB3	6512	10281	0.82%	0.106%
99	14.092	3958	3966	3978	rBV	11023	17398	1.38%	0.179%
100	14.333	4034	4041	4053	rVB2	6627	10129	0.80%	0.104%

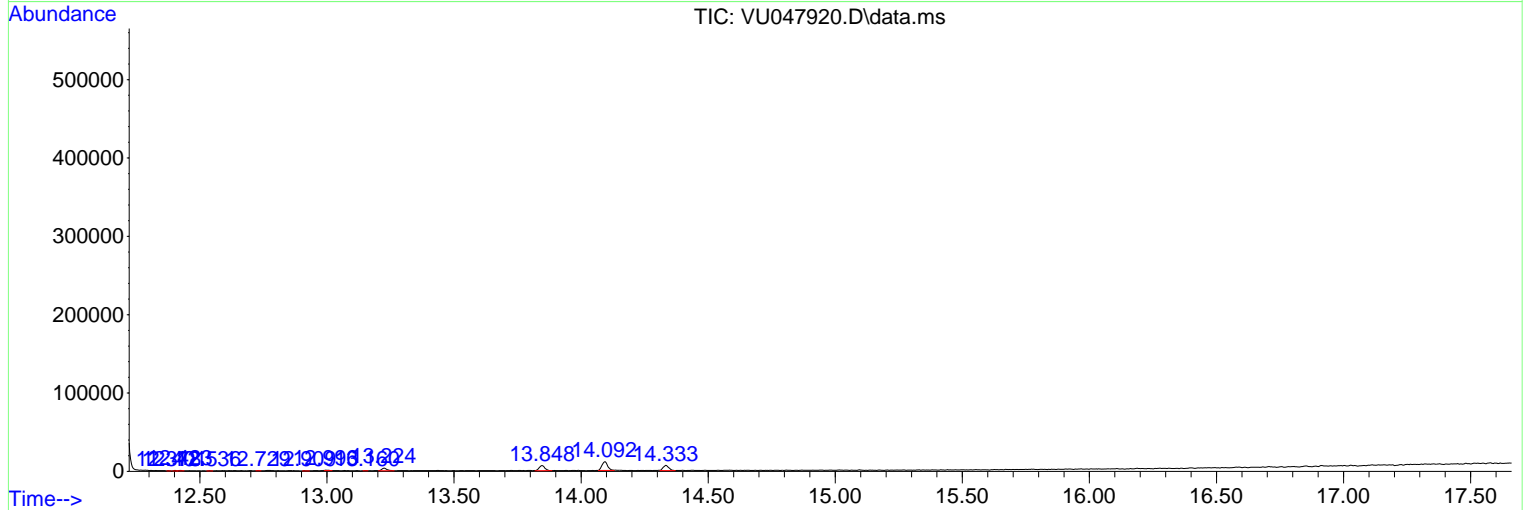
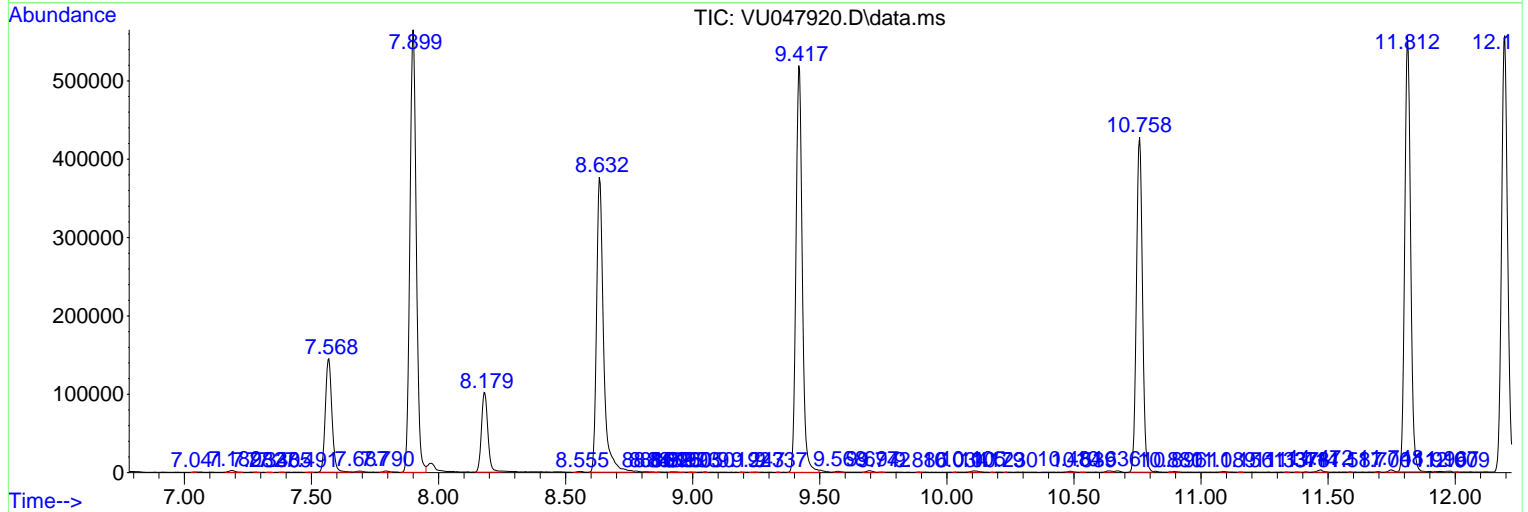
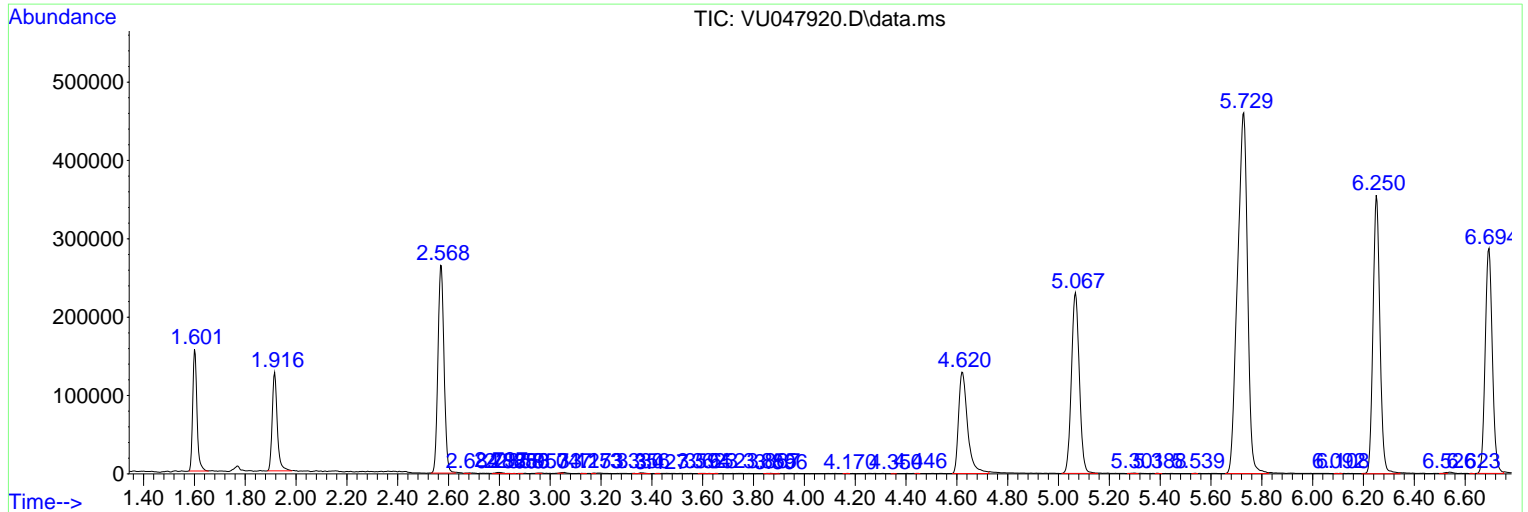
Sum of corrected areas: 9736213

Data Path : Z:\voasrv\HPCHEM1\MSVOA_U\Data\VU041122\
 Data File : VU047920.D
 Acq On : 11 Apr 2022 21:04
 Operator : SY/MD
 Sample : VU0411MBL02
 Misc : 5.00g/5.0mL/100uL/5.0mL/MSVOA_U/MEOH
 ALS Vial : 28 Sample Multiplier: 1

Instrument :
 MSVOA_U
ClientSampleId :
 VBLK083

Quant Method : Z:\voasrv\HPCHEM1\MSVOA_U\Method\SFAMULM032422WMA.M
 Quant Title : VOC Analysis

TIC Library : C:\Database\NIST20.L
 TIC Integration Parameters: LSCINT.P



Data Path : Z:\voasrv\HPCHEM1\MSVOA_U\Data\VU041122\
Data File : VU047920.D
Acq On : 11 Apr 2022 21:04
Operator : SY/MD
Sample : VU0411MBL02
Misc : 5.00g/5.0mL/100uL/5.0mL/MSVOA_U/MEOH
ALS Vial : 28 Sample Multiplier: 1

Instrument :
MSVOA_U
ClientSampleId :
VBLK083

Quant Method : Z:\voasrv\HPCHEM1\MSVOA_U\Method\SFAMULM032422WMA.M
Quant Title : VOC Analysis

TIC Library : C:\Database\NIST20.L
TIC Integration Parameters: LSCINT.P

No Library Search Compounds Detected

Data Path : Z:\voasrv\HPCHEM1\MSVOA_U\Data\VU041122\
Data File : VU047920.D
Acq On : 11 Apr 2022 21:04
Operator : SY/MD
Sample : VU0411MBL02
Misc : 5.00g/5.0mL/100uL/5.0mL/MSVOA_U/MEOH
ALS Vial : 28 Sample Multiplier: 1

Instrument :
MSVOA_U
ClientSampleId :
VBLK083

Quant Method : Z:\voasrv\HPCHEM1\MSVOA_U\Method\SFAMULM032422WMA.M
Quant Title : VOC Analysis

TIC Library : C:\Database\NIST20.L
TIC Integration Parameters: LSCINT.P

TIC Top Hit name	RT	EstConc	Units	Response	--Internal Standard--		
					#	RT	Resp Conc
