

Data Path : Z:\voasrv\HPCHEM1\MSVOA\_U\Data\VU041123\  
 Data File : VU053647.D  
 Acq On : 11 Apr 2023 19:56  
 Operator : JC/MD  
 Sample : 02252-07 200X  
 Misc : 5.0mL/MSVOA\_U/WATER  
 ALS Vial : 23 Sample Multiplier: 1

Instrument :  
 MSVOA\_U  
 ClientSampleId :  
 COME3

Quant Time: Apr 12 02:27:36 2023  
 Quant Method : Z:\voasrv\HPCHEM1\MSVOA\_U\Method\SFAMULM033123WMA.M  
 Quant Title : VOC Analysis  
 QLast Update : Wed Apr 12 02:22:37 2023  
 Response via : Initial Calibration

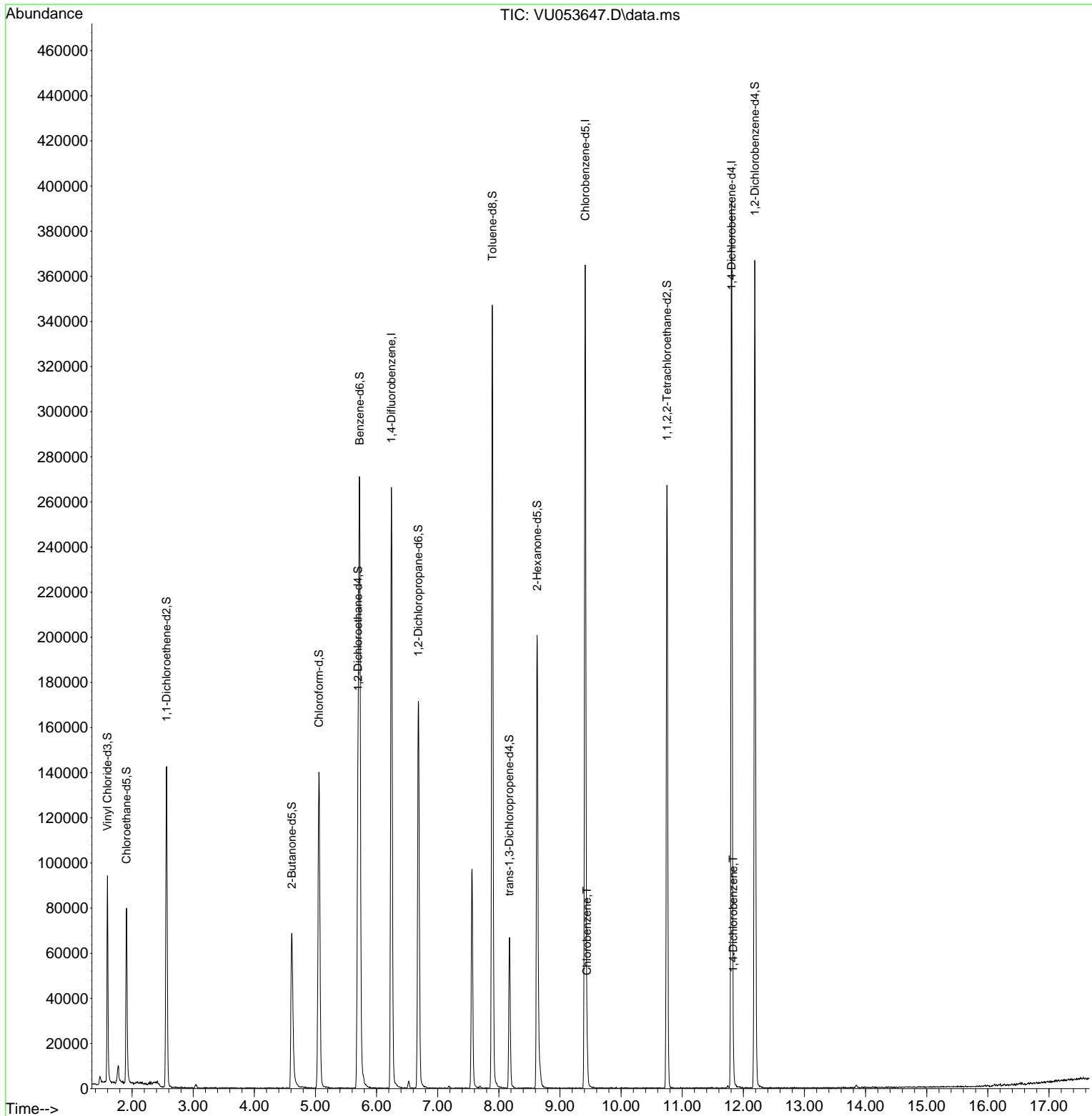
Compound	R.T.	QIon	Response	Conc	Units	Dev(Min)
-----						
Internal Standards						
1) 1,4-Difluorobenzene	6.243	114	230037	50.000	ug/L	0.00
28) Chlorobenzene-d5	9.414	117	214588	50.000	ug/L	0.00
58) 1,4-Dichlorobenzene-d4	11.809	152	106798	50.000	ug/L	0.00
System Monitoring Compounds						
4) Vinyl Chloride-d3	1.597	65	66320	37.025	ug/L	0.00
Spiked Amount	50.000	Range 60 - 135	Recovery =	74.060%		
7) Chloroethane-d5	1.909	69	61197	44.311	ug/L	0.00
Spiked Amount	50.000	Range 70 - 130	Recovery =	88.620%		
11) 1,1-Dichloroethene-d2	2.565	63	83562	30.137	ug/L	0.00
Spiked Amount	50.000	Range 60 - 125	Recovery =	60.280%		
21) 2-Butanone-d5	4.613	46	96689	119.225	ug/L	0.00
Spiked Amount	100.000	Range 40 - 130	Recovery =	119.220%		
24) Chloroform-d	5.057	84	131563	44.412	ug/L	0.00
Spiked Amount	50.000	Range 70 - 125	Recovery =	88.820%		
26) 1,2-Dichloroethane-d4	5.697	65	84826	48.459	ug/L	0.00
Spiked Amount	50.000	Range 70 - 125	Recovery =	96.920%		
32) Benzene-d6	5.722	84	259315	44.769	ug/L	0.00
Spiked Amount	50.000	Range 70 - 125	Recovery =	89.540%		
36) 1,2-Dichloropropane-d6	6.684	67	87743	49.560	ug/L	0.00
Spiked Amount	50.000	Range 70 - 120	Recovery =	99.120%		
41) Toluene-d8	7.893	98	236793	41.131	ug/L	0.00
Spiked Amount	50.000	Range 80 - 120	Recovery =	82.260%		
43) trans-1,3-Dichloroprop...	8.172	79	37428	40.955	ug/L	0.00
Spiked Amount	50.000	Range 60 - 125	Recovery =	81.900%		
47) 2-Hexanone-d5	8.626	63	71225	117.877	ug/L	0.00
Spiked Amount	100.000	Range 45 - 130	Recovery =	117.880%		
56) 1,1,2,2-Tetrachloroeth...	10.751	84	127839	51.231	ug/L	0.00
Spiked Amount	50.000	Range 65 - 120	Recovery =	102.460%		
66) 1,2-Dichlorobenzene-d4	12.188	152	97975	43.950	ug/L	0.00
Spiked Amount	50.000	Range 80 - 120	Recovery =	87.900%		
Target Compounds						
51) Chlorobenzene	9.442	112	7780	1.782	ug/L	95
65) 1,4-Dichlorobenzene	11.835	146	4366	1.298	ug/L	90
-----						

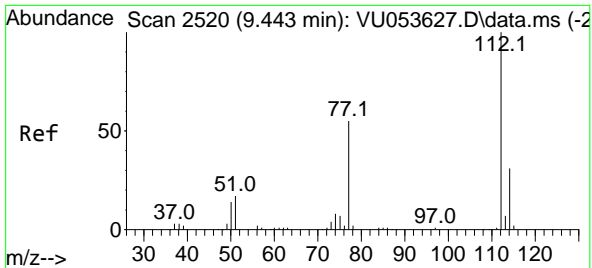
(#) = qualifier out of range (m) = manual integration (+) = signals summed

Data Path : Z:\voasrv\HPCHEM1\MSVOA\_U\Data\VU041123\  
 Data File : VU053647.D  
 Acq On : 11 Apr 2023 19:56  
 Operator : JC/MD  
 Sample : 02252-07 200X  
 Misc : 5.0mL/MSVOA\_U/WATER  
 ALS Vial : 23 Sample Multiplier: 1

Instrument :  
 MSVOA\_U  
 ClientSampleId :  
 COME3

Quant Time: Apr 12 02:27:36 2023  
 Quant Method : Z:\voasrv\HPCHEM1\MSVOA\_U\Method\SFAMULM033123WMA.M  
 Quant Title : VOC Analysis  
 QLast Update : Wed Apr 12 02:22:37 2023  
 Response via : Initial Calibration

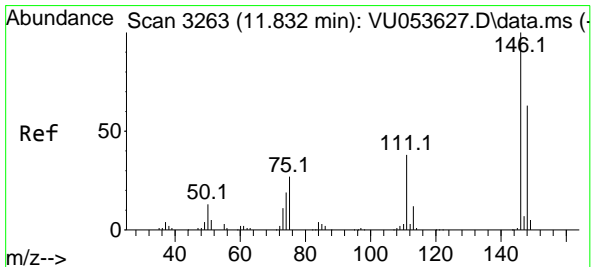
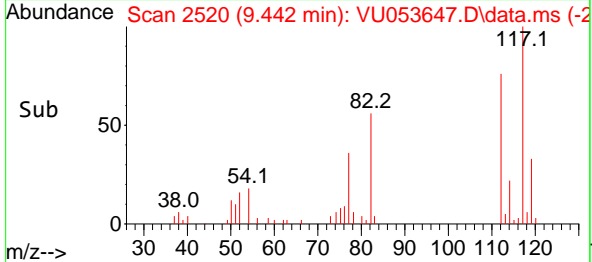
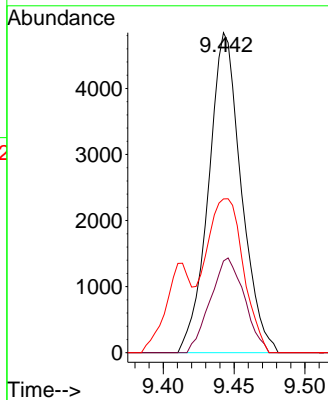
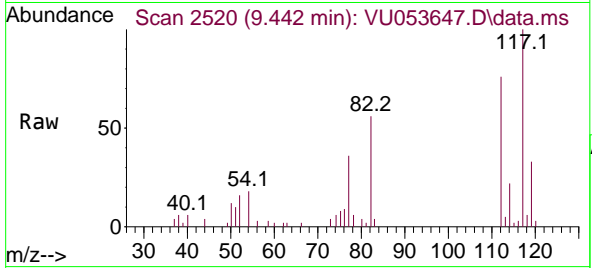




#51  
 Chlorobenzene  
 Concen: 1.782 ug/L  
 RT: 9.442 min Scan# 21  
 Delta R.T. -0.000 min  
 Lab File: VU053647.D  
 Acq: 11 Apr 2023 19:56

Instrument : MSVOA\_U  
 ClientSampleId : COME3

Tgt Ion	Resp	Lower	Upper
112	100		
114	28.6	22.2	41.2
77	48.0	41.3	61.9



#65  
 1,4-Dichlorobenzene  
 Concen: 1.298 ug/L  
 RT: 11.835 min Scan# 3264  
 Delta R.T. 0.003 min  
 Lab File: VU053647.D  
 Acq: 11 Apr 2023 19:56

Tgt Ion	Resp	Lower	Upper
146	100		
111	42.0	25.1	46.5
148	55.6	44.3	82.3

