

Data Path : Z:\voasrv\HPCHEM1\MSVOA_U\Data\VU041124\
 Data File : VU058638.D
 Acq On : 12 Apr 2024 03:25
 Operator : MD/SY
 Sample : P2055-18
 Misc : 25.0mL/MSVOA_U/WATER
 ALS Vial : 46 Sample Multiplier: 1

Instrument :
 MSVOA_U
ClientSampleId :
 COBN9

Quant Time: Apr 12 05:02:50 2024
 Quant Method : Z:\voasrv\HPCHEM1\MSVOA_U\Method\SFAMUTRO40424WMA.M
 Quant Title : TRACE VOA SFAM1.0
 QLast Update : Fri Apr 12 04:41:05 2024
 Response via : Initial Calibration

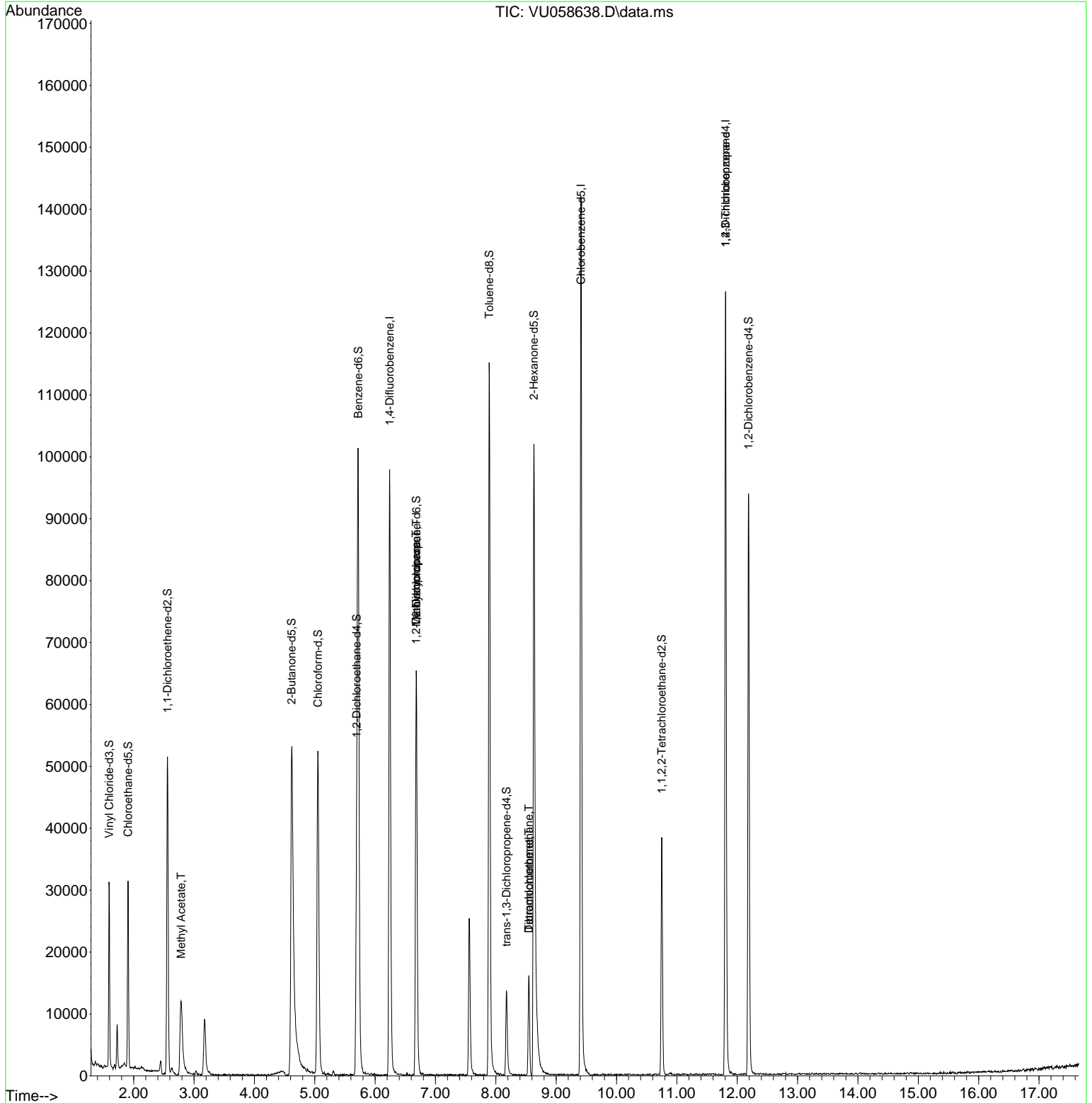
Compound	R.T.	QI on	Response	Conc	Units	Dev(Min)
Internal Standards						
1) 1,4-Difluorobenzene	6.242	114	75293	5.000	ug/L	0.00
28) Chlorobenzene-d5	9.412	117	75573	5.000	ug/L	0.00
58) 1,4-Dichlorobenzene-d4	11.807	152	32417	5.000	ug/L	0.00
System Monitoring Compounds						
4) Vinyl Chloride-d3	1.592	65	20211	4.054	ug/L	0.00
Spike Amount	5.000	Range	40 - 130	Recovery	=	81.000%
7) Chloroethane-d5	1.907	69	20364	4.701	ug/L	0.00
Spike Amount	5.000	Range	65 - 130	Recovery	=	94.000%
11) 1,1-Dichloroethene-d2	2.560	65	10281	4.557	ug/L	0.00
Spike Amount	5.000	Range	60 - 125	Recovery	=	91.200%
20) 2-Butanone-d5	4.618	46	54243	51.635	ug/L	0.00
Spike Amount	50.000	Range	40 - 130	Recovery	=	103.260%
24) Chloroform-d	5.052	84	49136	4.938	ug/L	0.00
Spike Amount	5.000	Range	70 - 125	Recovery	=	98.800%
26) 1,2-Dichloroethane-d4	5.695	65	23859	5.138	ug/L	0.00
Spike Amount	5.000	Range	70 - 130	Recovery	=	102.800%
32) Benzene-d6	5.721	84	92718	4.557	ug/L	0.00
Spike Amount	5.000	Range	70 - 125	Recovery	=	91.200%
36) 1,2-Dichloropropane-d6	6.682	67	30415	4.767	ug/L	0.00
Spike Amount	5.000	Range	60 - 140	Recovery	=	95.400%
41) Toluene-d8	7.891	98	76700	4.251	ug/L	0.00
Spike Amount	5.000	Range	70 - 130	Recovery	=	85.000%
43) trans-1,3-Dichloropropene	8.177	79	8596	4.340	ug/L	0.00
Spike Amount	5.000	Range	55 - 130	Recovery	=	86.800%
46) 2-Hexanone-d5	8.630	63	35875	43.915	ug/L	0.00
Spike Amount	50.000	Range	45 - 130	Recovery	=	87.820%
56) 1,1,2,2-Tetrachloroethene	10.749	84	20022	4.445	ug/L	0.00
Spike Amount	5.000	Range	65 - 120	Recovery	=	88.800%
66) 1,2-Dichlorobenzene-d4	12.187	152	24587	4.503	ug/L	0.00
Spike Amount	5.000	Range	80 - 120	Recovery	=	90.000%
Target Compounds						
15) Methyl Acetate	2.788	43	6195	2.928	ug/L #	55
35) Methylcyclohexane	6.682	83	6602	0.635	ug/L #	16
37) 1,2-Dichloropropane	6.679	63	3537	0.491	ug/L #	90
47) Tetrachloroethene	8.547	164	3583	0.708	ug/L	94
49) Dibromochloromethane	8.550	129	3268	0.671	ug/L #	11
61) 1,2,3-Trichloropropane	11.807	75	4657	1.408	ug/L #	70

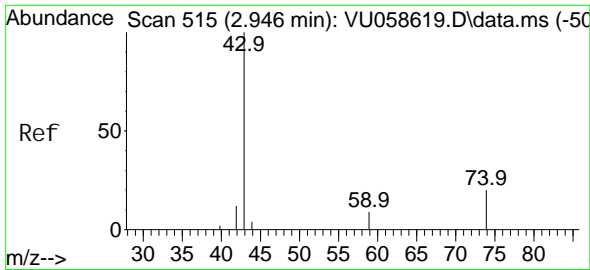
(#) = qualifier out of range (m) = manual integration (+) = signals summed

Data Path : Z:\voasrv\HPCHEM1\MSVOA_U\Data\VU041124\
 Data File : VU058638.D
 Acq On : 12 Apr 2024 03:25
 Operator : MD/SY
 Sample : P2055-18
 Misc : 25.0mL/MSVOA_U/WATER
 ALS Vial : 46 Sample Multiplier: 1

Instrument :
 MSVOA_U
ClientSampleId :
 C0BN9

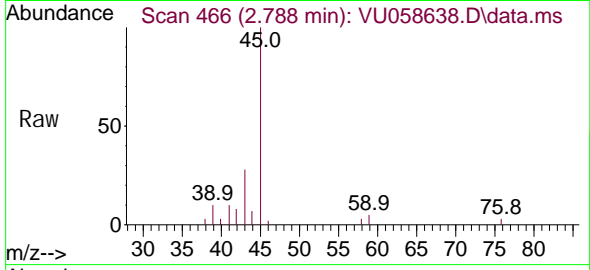
Quant Time: Apr 12 05:02:50 2024
 Quant Method : Z:\voasrv\HPCHEM1\MSVOA_U\Method\SFAMUTR040424WMA.M
 Quant Title : TRACE VOA SFAM1.0
 QLast Update : Fri Apr 12 04:41:05 2024
 Response via : Initial Calibration



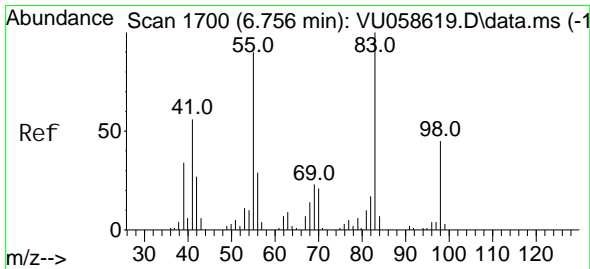
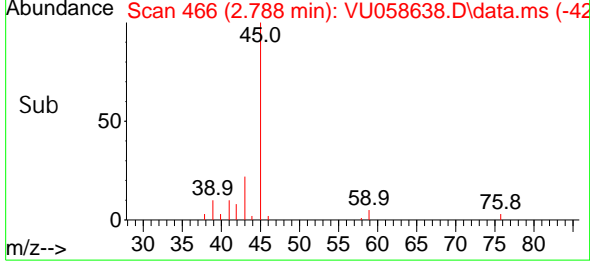
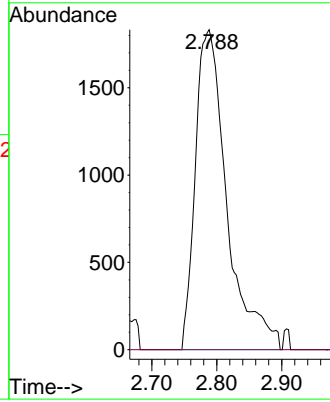


#15
Methyl Acetate
Concen: 2.928 ug/L
RT: 2.788 min Scan# 40
Delta R.T. -0.158 min
Lab File: VU058638.D
Acq: 12 Apr 2024 03:25

Instrument : MSVOA_U
Client SampleId : COBN9

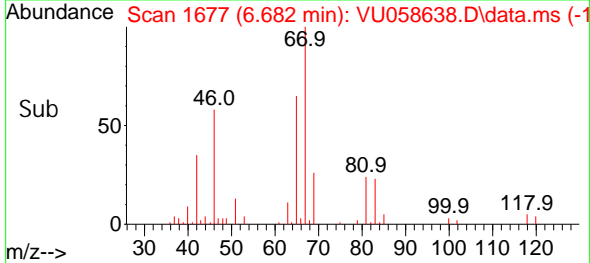
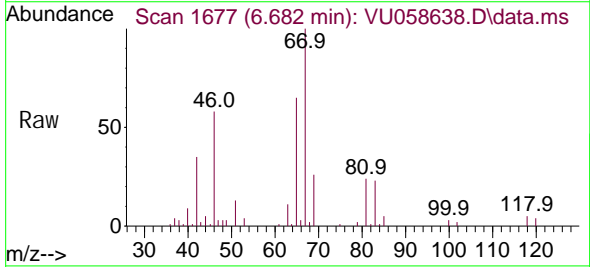
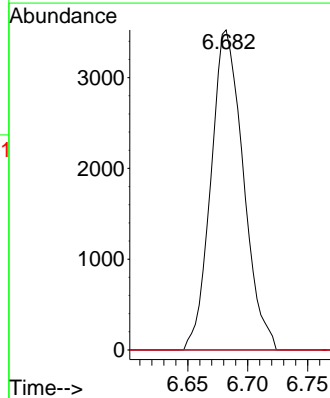


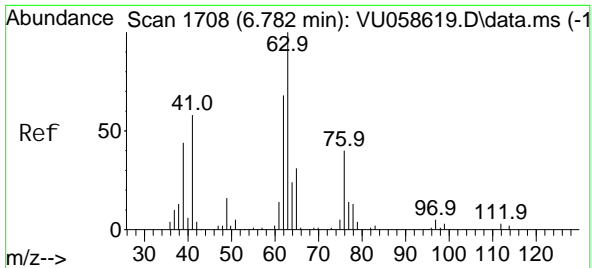
Tgt Ion: 43 Resp: 6195
Ion Ratio Lower Upper
43 100
74 0.0 16.6 25.0#



#35
Methyl cycl ohexane
Concen: 0.635 ug/L
RT: 6.682 min Scan# 1677
Delta R.T. -0.074 min
Lab File: VU058638.D
Acq: 12 Apr 2024 03:25

Tgt Ion: 83 Resp: 6602
Ion Ratio Lower Upper
83 100
55 0.0 66.2 99.4#
98 0.0 34.6 52.0#

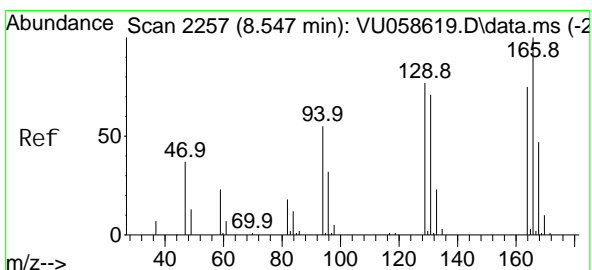
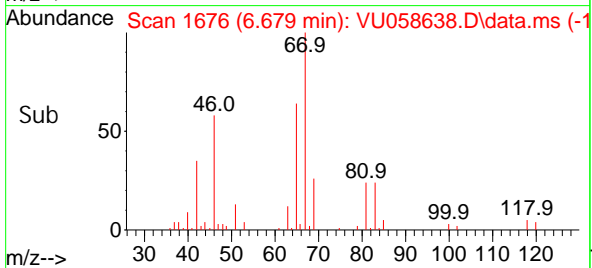
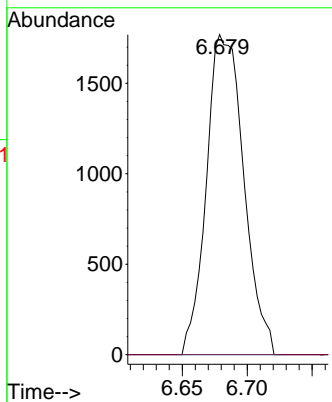
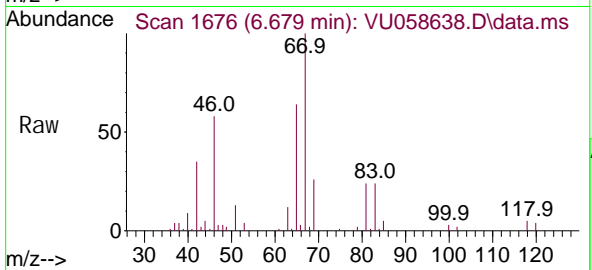




#37
 1, 2-Di chl oropropane
 Concen: 0.491 ug/L
 RT: 6.679 min Scan# 10
 Delta R.T. -0.103 min
 Lab File: VU058638.D
 Acq: 12 Apr 2024 03:25

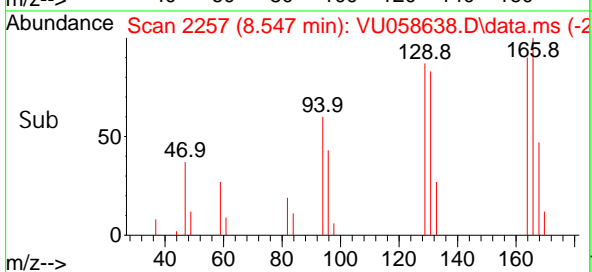
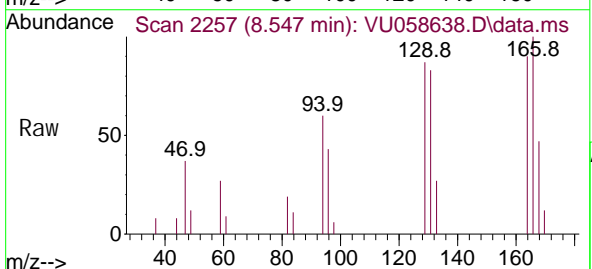
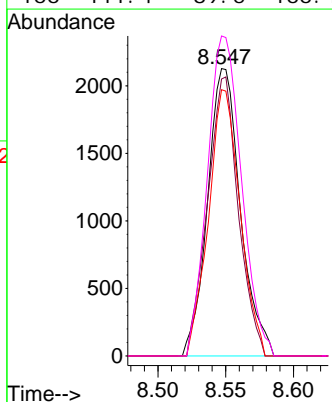
Instrument : MSVOA_U
 ClientSampleId : COBN9

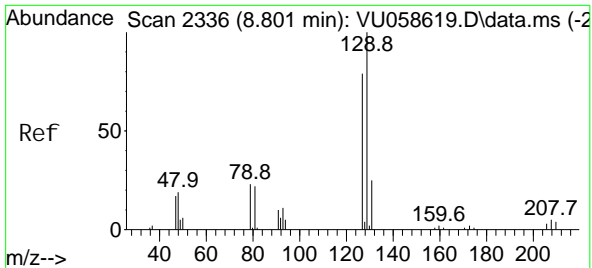
Tgt Ion: 63 Resp: 3537
 Ion Ratio Lower Upper
 63 100
 112 0.0 2.6 4.0#



#47
 Tetrachloroethene
 Concen: 0.708 ug/L
 RT: 8.547 min Scan# 2257
 Delta R.T. -0.000 min
 Lab File: VU058638.D
 Acq: 12 Apr 2024 03:25

Tgt Ion: 164 Resp: 3583
 Ion Ratio Lower Upper
 164 100
 129 96.4 67.3 125.1
 131 92.7 65.5 121.6
 166 111.4 89.5 166.1

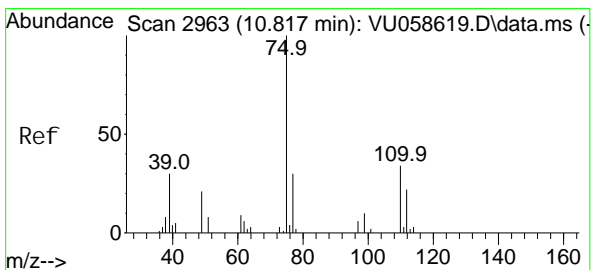
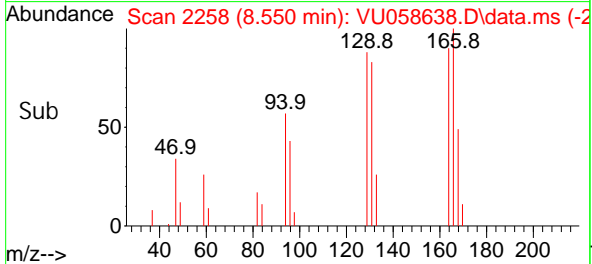
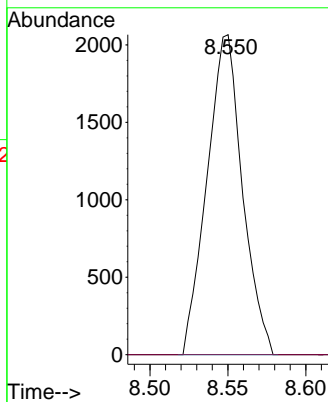
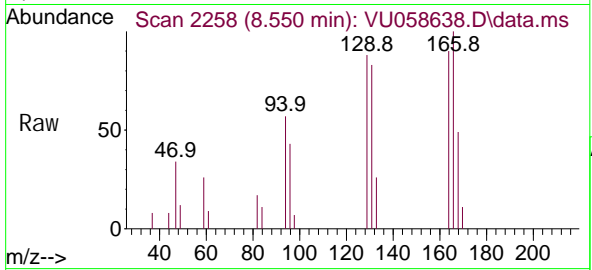




#49
 Di bromochloromethane
 Concen: 0.671 ug/L
 RT: 8.550 min Scan# 21
 Delta R.T. -0.251 min
 Lab File: VU058638.D
 Acq: 12 Apr 2024 03:25

Instrument : MSVOA_U
 ClientSampleId : COBN9

Tgt Ion: 129 Resp: 3268
 Ion Ratio Lower Upper
 129 100
 127 0.0 53.5 99.5#



#61
 1,2,3-Tri chloropropane
 Concen: 1.408 ug/L
 RT: 11.807 min Scan# 3271
 Delta R.T. 0.990 min
 Lab File: VU058638.D
 Acq: 12 Apr 2024 03:25

Tgt Ion: 75 Resp: 4657
 Ion Ratio Lower Upper
 75 100
 110 0.0 25.8 38.6#
 77 32.0 25.1 37.7

