

Data Path : Z:\voasrv\HPCHEM1\MSVOA_U\Data\VU041221\
 Data File : VU043027.D
 Acq On : 12 Apr 2021 16:47
 Operator : SY/MD
 Sample : M1978-05
 Misc : 5.0mL/MSVOA_U/WATER
 ALS Vial : 16 Sample Multiplier: 1

Instrument :
 MSVOA_U
 ClientSampleId :
 TRIP-BLANK

Quant Time: Apr 13 05:14:15 2021
 Quant Method : Z:\voasrv\HPCHEM1\MSVOA_U\Method\82U041221W.M
 Quant Title : SW846 8260
 QLast Update : Mon Apr 12 13:17:29 2021
 Response via : Initial Calibration

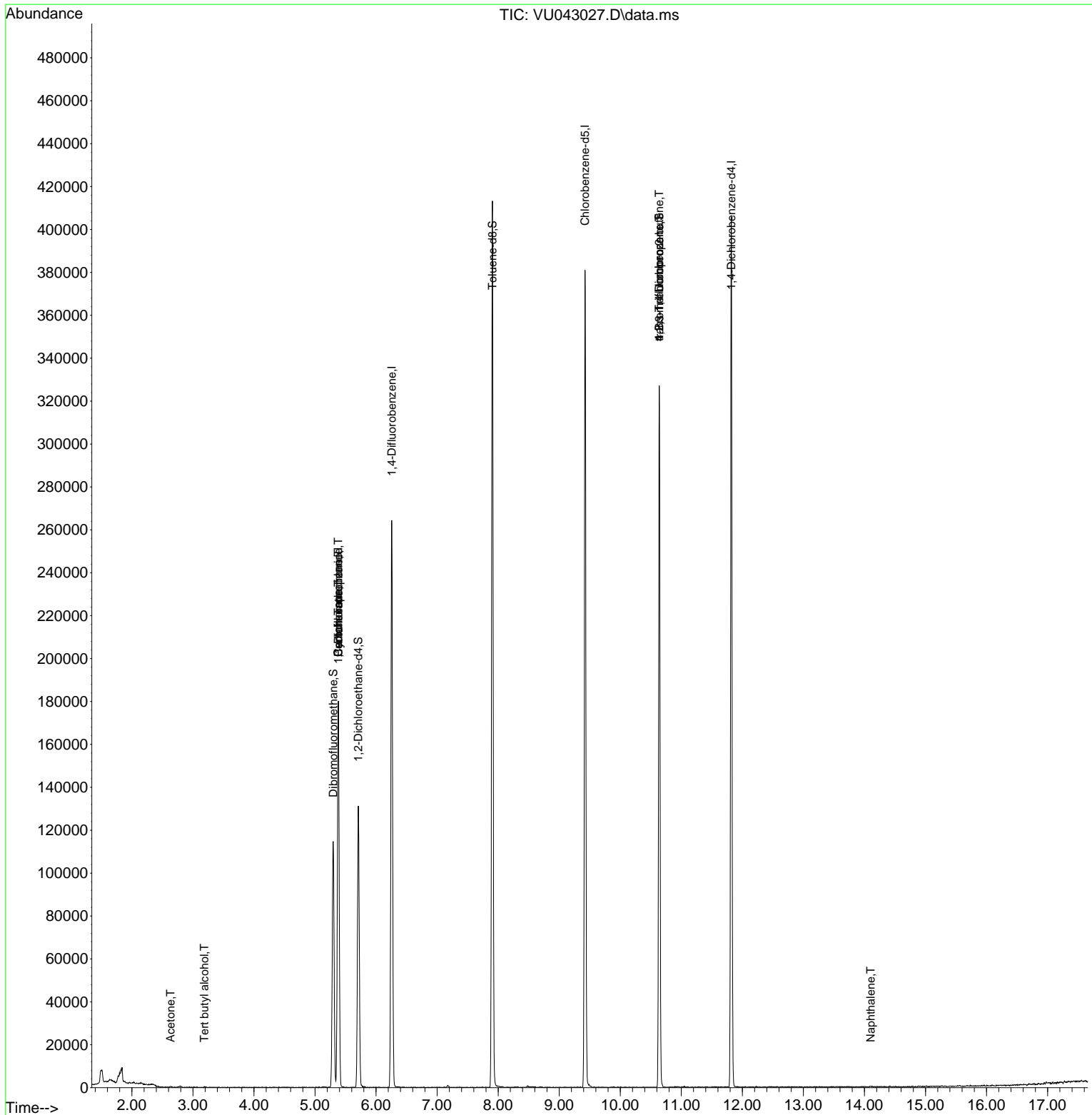
Compound	R.T.	QIon	Response	Conc	Units	Dev(Min)
Internal Standards						
1) Pentafluorobenzene	5.382	168	121422	50.00	ug/l	0.00
34) 1,4-Difluorobenzene	6.256	114	199473	50.00	ug/l	0.00
63) Chlorobenzene-d5	9.423	117	192724	50.00	ug/l	0.00
72) 1,4-Dichlorobenzene-d4	11.819	152	98005	50.00	ug/l	0.00
System Monitoring Compounds						
33) 1,2-Dichloroethane-d4	5.710	65	99697	48.84	ug/l	0.00
Spiked Amount	50.000		Recovery	=	97.68%	
35) Dibromofluoromethane	5.298	113	69008	46.04	ug/l	0.00
Spiked Amount	50.000		Recovery	=	92.08%	
50) Toluene-d8	7.906	98	252619	47.63	ug/l	0.00
Spiked Amount	50.000		Recovery	=	95.26%	
62) 4-Bromofluorobenzene	10.639	95	94411	44.45	ug/l	0.00
Spiked Amount	50.000		Recovery	=	88.90%	
Target Compounds						
3) Chloromethane	1.517	50	501	Below Cal	#	41
11) Tert butyl alcohol	3.186	59	137	0.26	ug/l #	94
16) Acetone	2.636	43	665	0.25	ug/l #	48
31) Cyclohexane	5.382	56	3082	1.22	ug/l #	12
36) 1,1-Dichloropropene	5.378	75	10756	5.08	ug/l #	49
38) Carbon Tetrachloride	5.382	117	11759	5.18	ug/l #	16
76) 1,2,3-Trichloropropane	10.639	75	54383	18.99	ug/l #	37
81) trans-1,4-Dichloro-2-b...	10.639	75	54383	55.80	ug/l #	7
95) Naphthalene	14.102	128	279	2.78	ug/l #	69

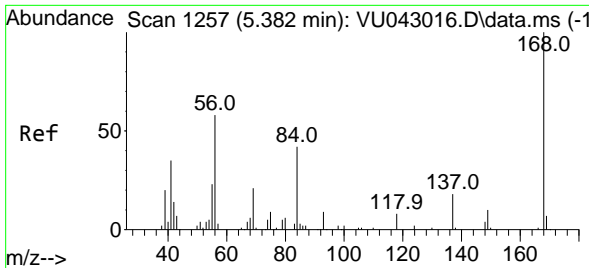
(#) = qualifier out of range (m) = manual integration (+) = signals summed

Data Path : Z:\voasrv\HPCHEM1\MSVOA_U\Data\VU041221\
 Data File : VU043027.D
 Acq On : 12 Apr 2021 16:47
 Operator : SY/MD
 Sample : M1978-05
 Misc : 5.0mL/MSVOA_U/WATER
 ALS Vial : 16 Sample Multiplier: 1

Instrument :
 MSVOA_U
 Client Sampled :
 TRIP-BLANK

Quant Time: Apr 13 05:14:15 2021
 Quant Method : Z:\voasrv\HPCHEM1\MSVOA_U\Method\82U041221W.M
 Quant Title : SW846 8260
 QLast Update : Mon Apr 12 13:17:29 2021
 Response via : Initial Calibration

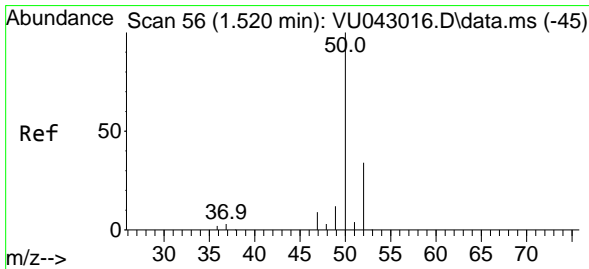
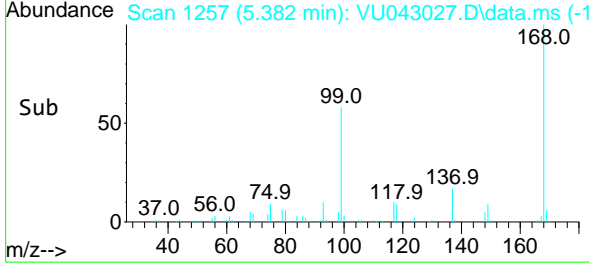
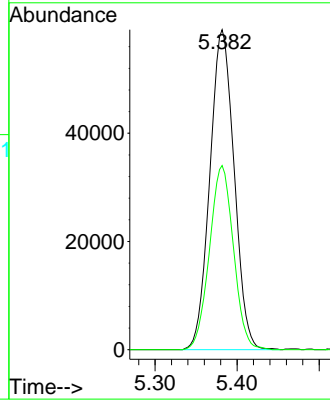
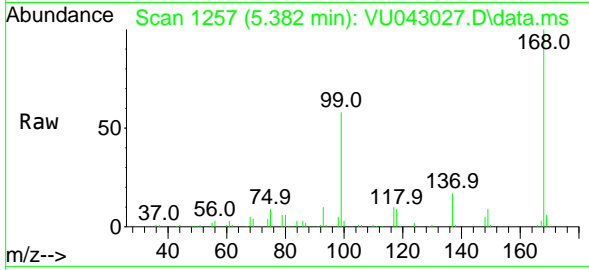




#1
 Pentafluorobenzene
 Concen: 50.00 ug/l
 RT: 5.382 min Scan# 1257
 Delta R.T. -0.000 min
 Lab File: VU043027.D
 Acq: 12 Apr 2021 16:47

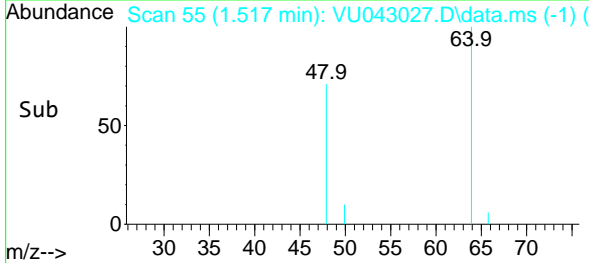
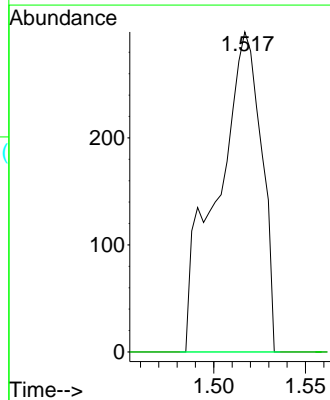
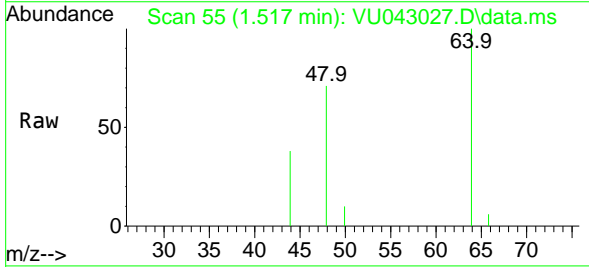
Instrument :
 MSVOA_U
 ClientSampled :
 TRIP-BLANK

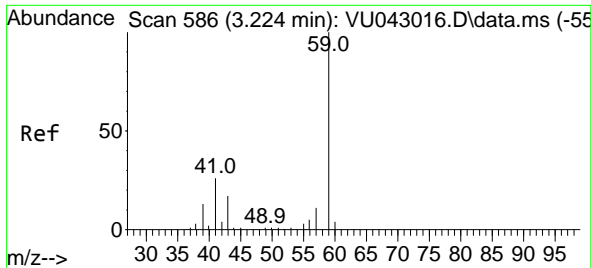
Tgt Ion:168 Resp: 121422
 Ion Ratio Lower Upper
 168 100
 99 57.6 45.0 67.4



#3
 Chloromethane
 Concen: Below Cal
 RT: 1.517 min Scan# 55
 Delta R.T. -0.003 min
 Lab File: VU043027.D
 Acq: 12 Apr 2021 16:47

Tgt Ion: 50 Resp: 501
 Ion Ratio Lower Upper
 50 100
 52 0.0 26.6 40.0#

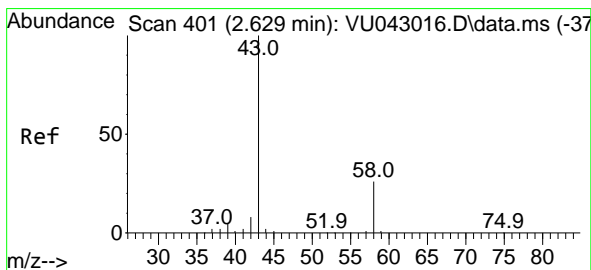
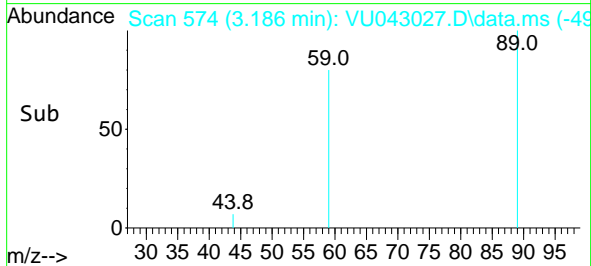
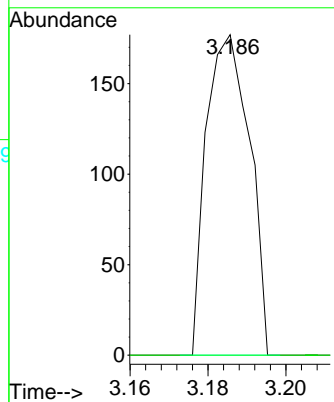
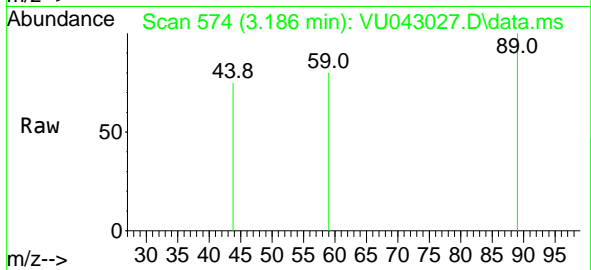




#11
 Tert butyl alcohol
 Concen: 0.26 ug/l
 RT: 3.186 min Scan# 574
 Delta R.T. -0.038 min
 Lab File: VU043027.D
 Acq: 12 Apr 2021 16:47

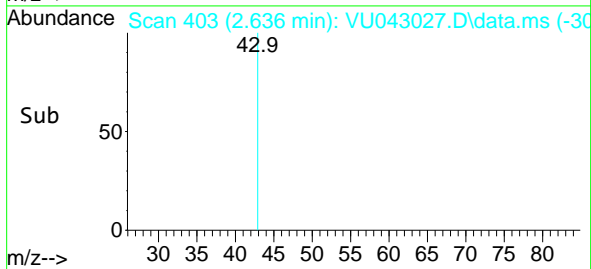
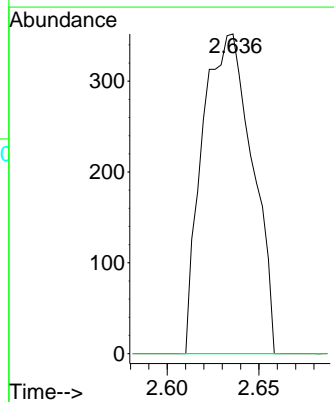
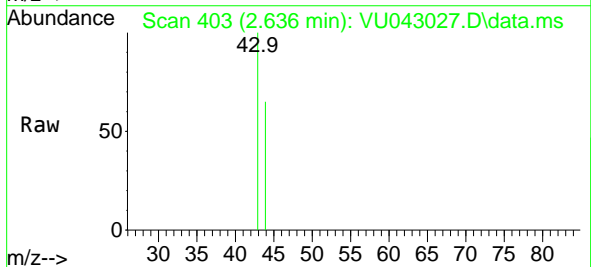
Instrument :
 MSVOA_U
 ClientSampled :
 TRIP-BLANK

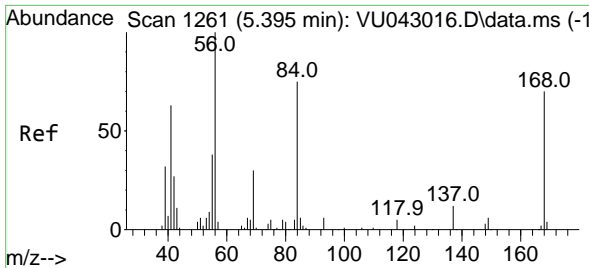
Tgt Ion: 59 Resp: 137
 Ion Ratio Lower Upper
 59 100
 57 0.0 1.6 2.4#



#16
 Acetone
 Concen: 0.25 ug/l
 RT: 2.636 min Scan# 403
 Delta R.T. 0.007 min
 Lab File: VU043027.D
 Acq: 12 Apr 2021 16:47

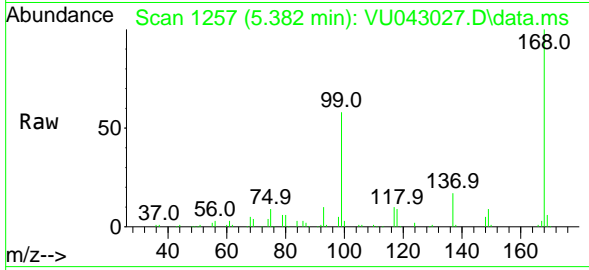
Tgt Ion: 43 Resp: 665
 Ion Ratio Lower Upper
 43 100
 58 0.0 21.5 32.3#



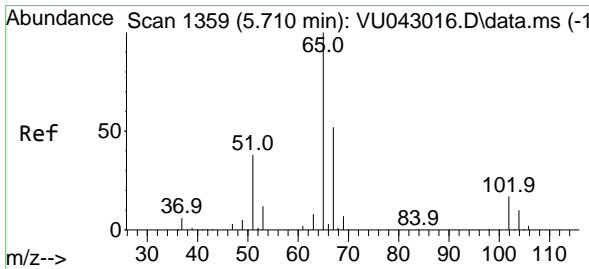
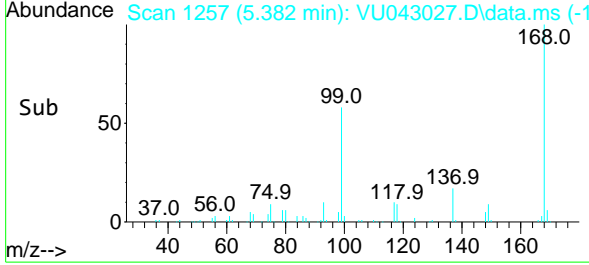
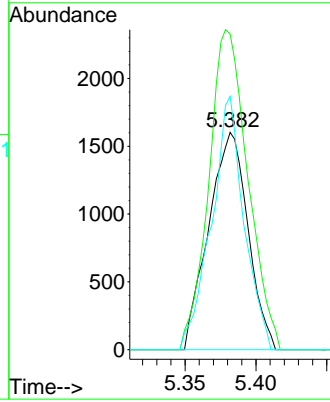


#31
 Cyclohexane
 Concen: 1.22 ug/l
 RT: 5.382 min Scan# 1257
 Delta R.T. -0.013 min
 Lab File: VU043027.D
 Acq: 12 Apr 2021 16:47

Instrument :
 MSVOA_U
 ClientSampled :
 TRIP-BLANK

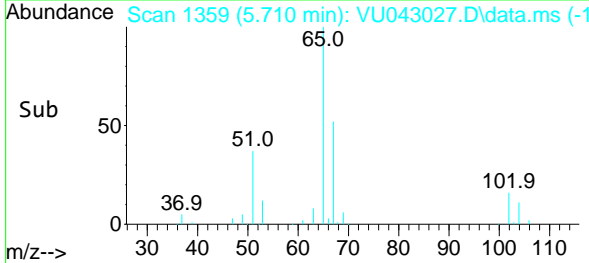
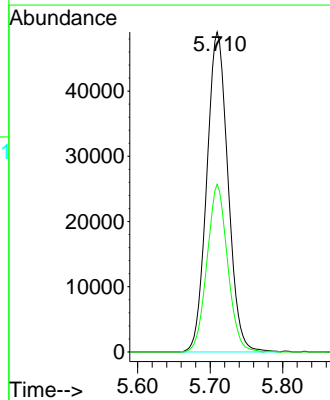
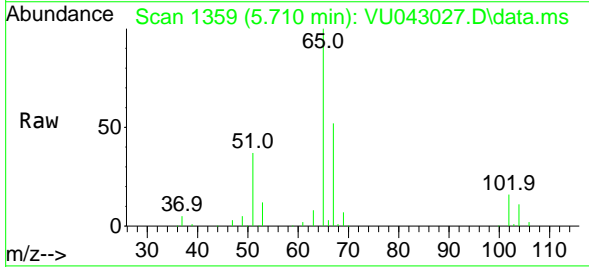


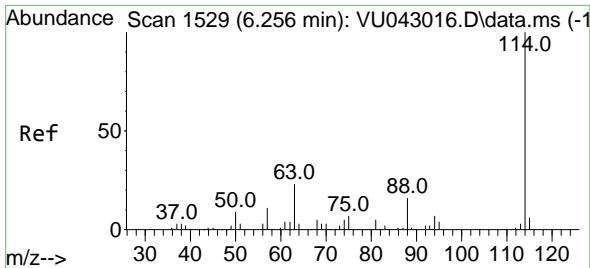
Tgt Ion: 56 Resp: 3082
 Ion Ratio Lower Upper
 56 100
 69 145.2 24.9 37.3#
 84 116.5 63.7 95.5#



#33
 1,2-Dichloroethane-d4
 Concen: 48.84 ug/l
 RT: 5.710 min Scan# 1359
 Delta R.T. -0.000 min
 Lab File: VU043027.D
 Acq: 12 Apr 2021 16:47

Tgt Ion: 65 Resp: 99697
 Ion Ratio Lower Upper
 65 100
 67 50.7 0.0 99.8

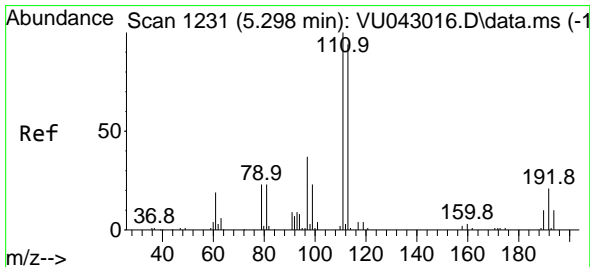
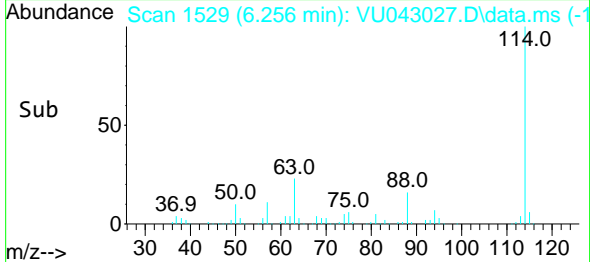
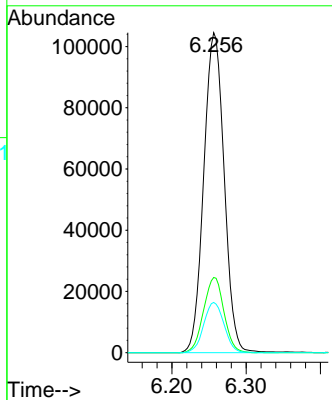
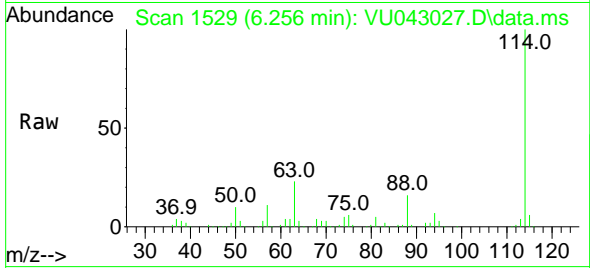




#34
 1,4-Difluorobenzene
 Concen: 50.00 ug/l
 RT: 6.256 min Scan# 1529
 Delta R.T. 0.000 min
 Lab File: VU043027.D
 Acq: 12 Apr 2021 16:47

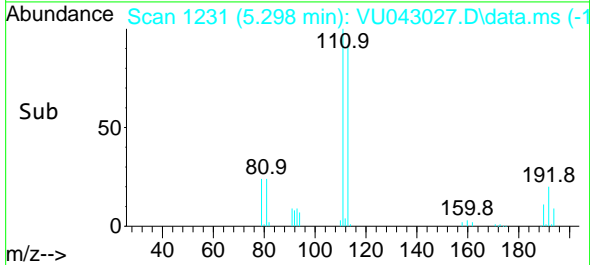
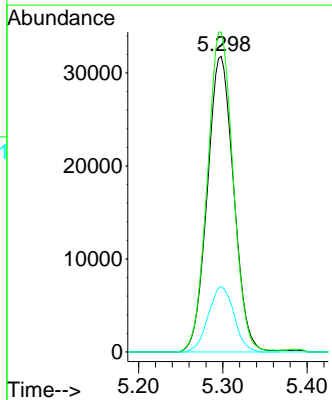
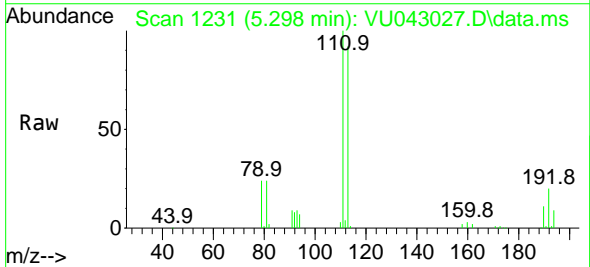
Instrument :
 MSVOA_U
 ClientSampled :
 TRIP-BLANK

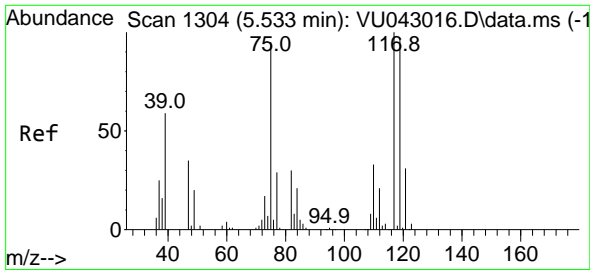
Tgt Ion	Resp	Lower	Upper
114	100		
63	23.5	0.0	44.2
88	15.7	0.0	33.4



#35
 Dibromofluoromethane
 Concen: 46.04 ug/l
 RT: 5.298 min Scan# 1231
 Delta R.T. 0.000 min
 Lab File: VU043027.D
 Acq: 12 Apr 2021 16:47

Tgt Ion	Resp	Lower	Upper
113	100		
111	106.2	81.8	122.8
192	21.5	17.2	25.8

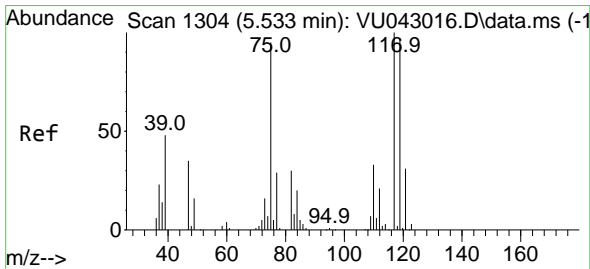
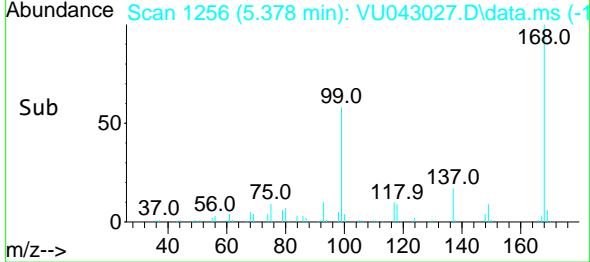
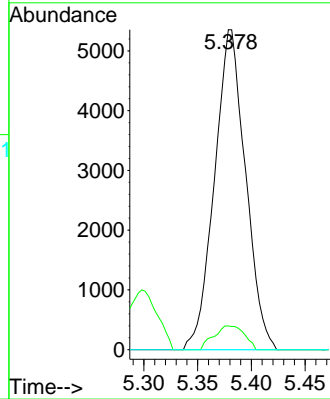
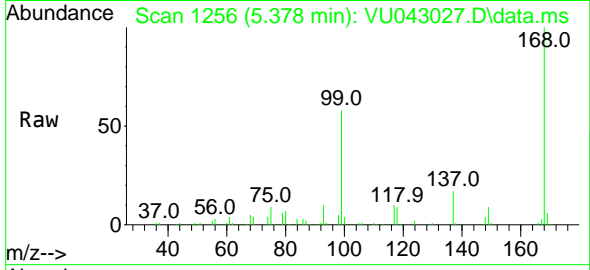




#36
 1,1-Dichloropropene
 Concen: 5.08 ug/l
 RT: 5.378 min Scan# 1256
 Delta R.T. -0.155 min
 Lab File: VU043027.D
 Acq: 12 Apr 2021 16:47

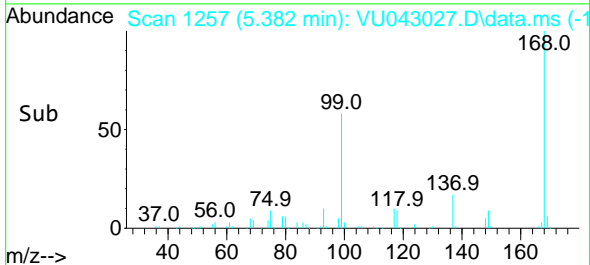
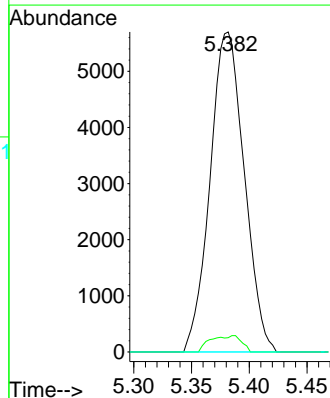
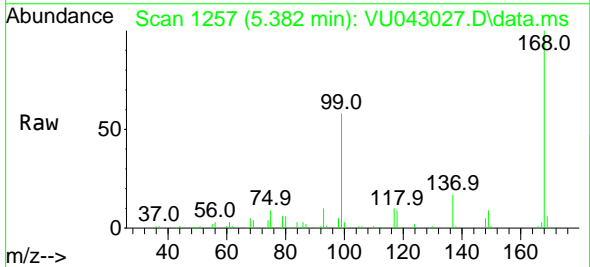
Instrument :
 MSVOA_U
 ClientSampled :
 TRIP-BLANK

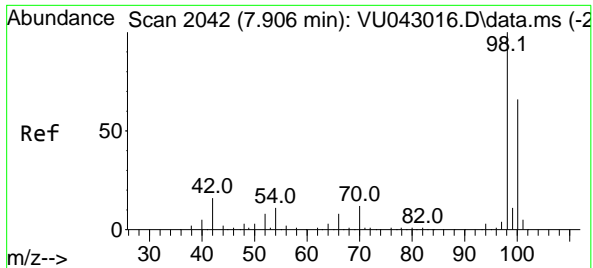
Tgt Ion: 75 Resp: 10756
 Ion Ratio Lower Upper
 75 100
 110 7.3 16.8 50.3#
 77 0.0 24.8 37.2#



#38
 Carbon Tetrachloride
 Concen: 5.18 ug/l
 RT: 5.382 min Scan# 1257
 Delta R.T. -0.151 min
 Lab File: VU043027.D
 Acq: 12 Apr 2021 16:47

Tgt Ion: 117 Resp: 11759
 Ion Ratio Lower Upper
 117 100
 119 4.5 75.5 113.3#
 121 0.0 24.7 37.1#

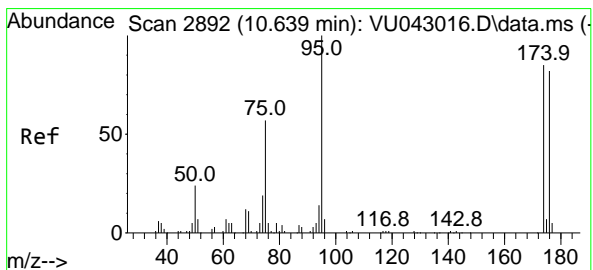
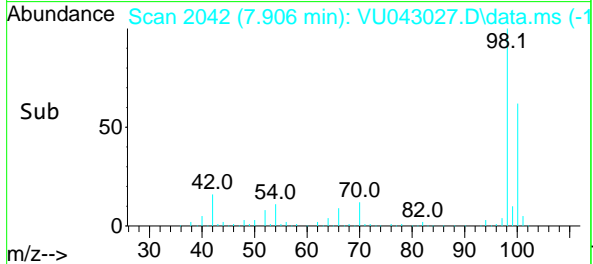
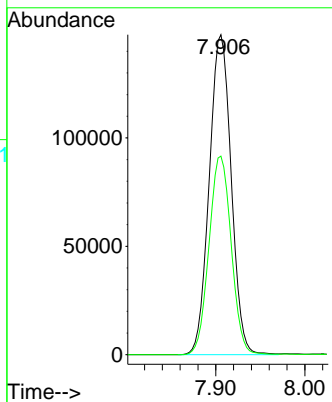
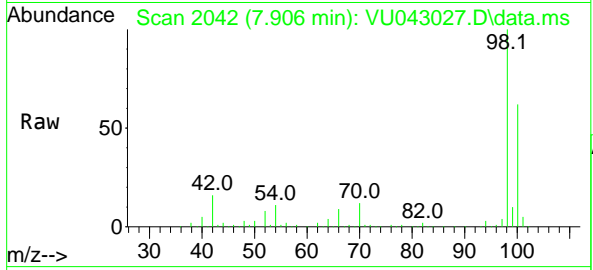




#50
 Toluene-d8
 Concen: 47.63 ug/l
 RT: 7.906 min Scan# 2042
 Delta R.T. -0.000 min
 Lab File: VU043027.D
 Acq: 12 Apr 2021 16:47

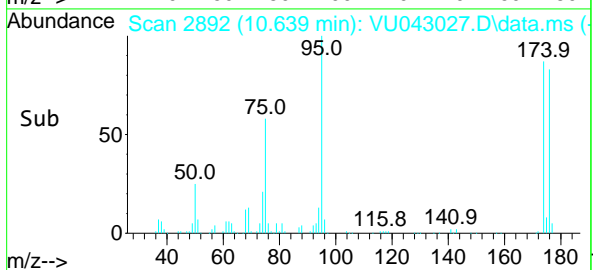
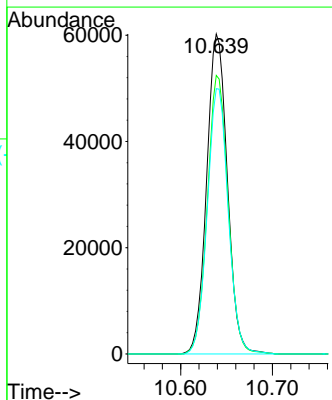
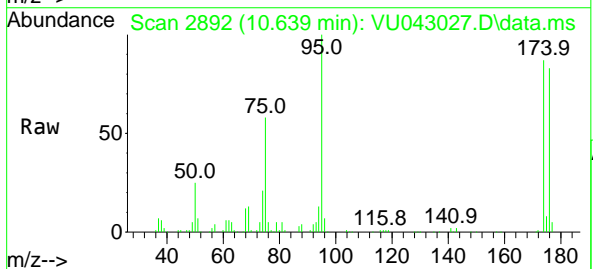
Instrument :
 MSVOA_U
 ClientSampled :
 TRIP-BLANK

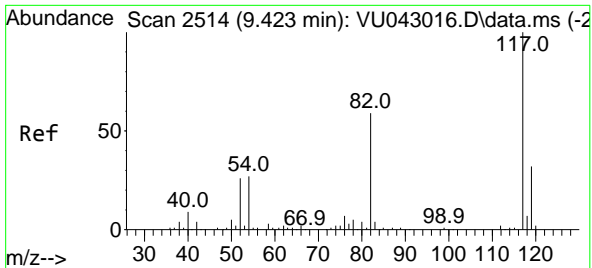
Tgt Ion: 98 Resp: 252619
 Ion Ratio Lower Upper
 98 100
 100 62.8 50.2 75.2



#62
 4-Bromofluorobenzene
 Concen: 44.45 ug/l
 RT: 10.639 min Scan# 2892
 Delta R.T. -0.000 min
 Lab File: VU043027.D
 Acq: 12 Apr 2021 16:47

Tgt Ion: 95 Resp: 94411
 Ion Ratio Lower Upper
 95 100
 174 87.1 0.0 172.2
 176 83.9 0.0 168.8

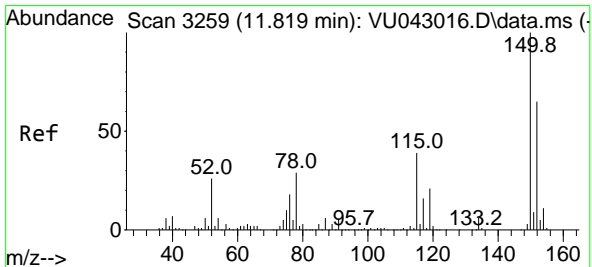
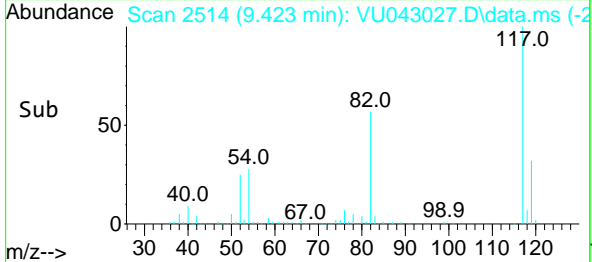
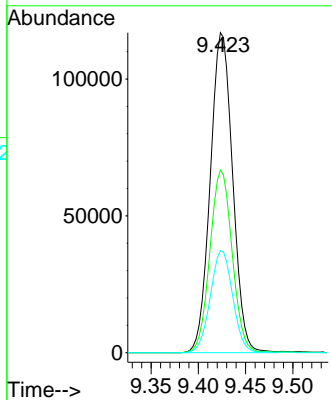
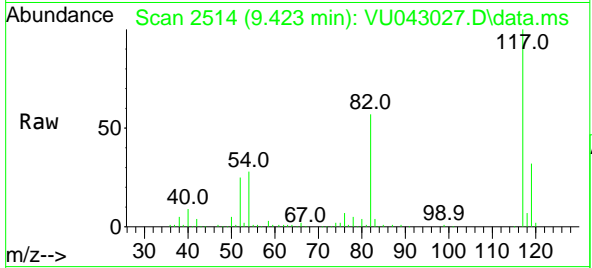




#63
 Chlorobenzene-d5
 Concen: 50.00 ug/l
 RT: 9.423 min Scan# 2514
 Delta R.T. 0.000 min
 Lab File: VU043027.D
 Acq: 12 Apr 2021 16:47

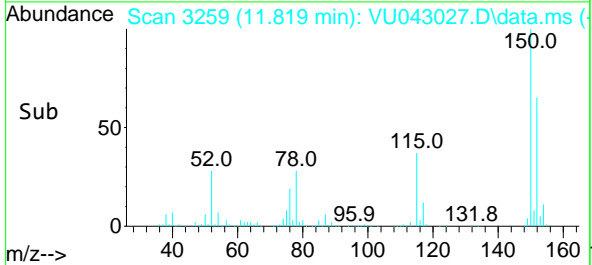
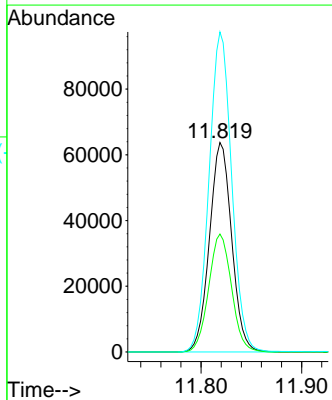
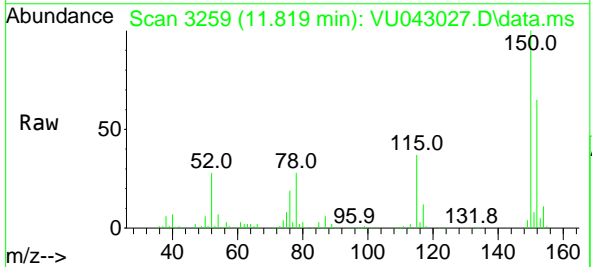
Instrument :
 MSVOA_U
 ClientSampled :
 TRIP-BLANK

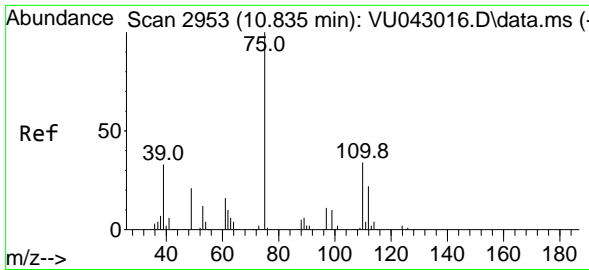
Tgt Ion	Resp	Lower	Upper
117	100		
82	57.1	45.8	68.6
119	31.9	25.8	38.8



#72
 1,4-Dichlorobenzene-d4
 Concen: 50.00 ug/l
 RT: 11.819 min Scan# 3259
 Delta R.T. -0.000 min
 Lab File: VU043027.D
 Acq: 12 Apr 2021 16:47

Tgt Ion	Resp	Lower	Upper
152	100		
115	57.7	41.5	124.6
150	155.5	0.0	342.4

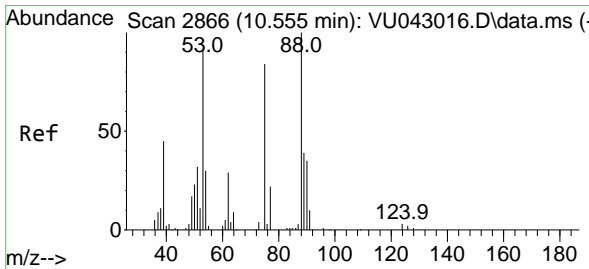
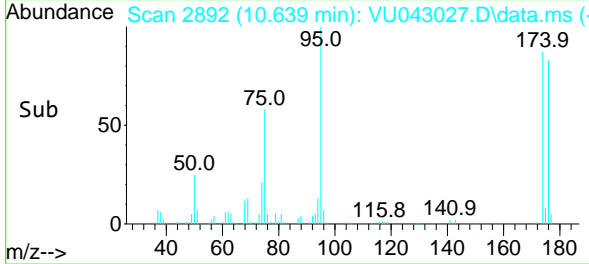
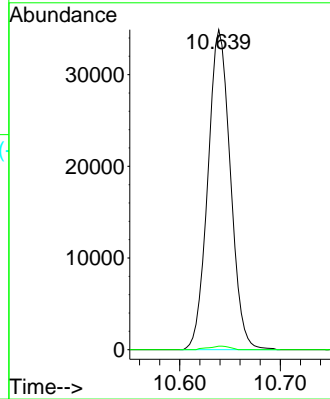
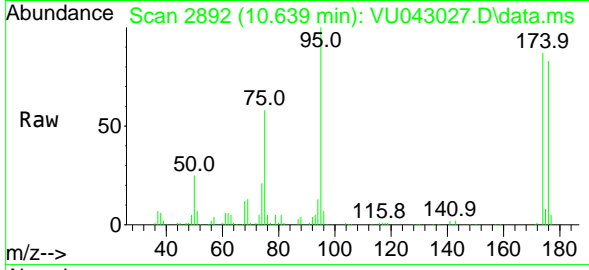




#76
 1,2,3-Trichloropropane
 Concen: 18.99 ug/l
 RT: 10.639 min Scan# 2892
 Delta R.T. -0.196 min
 Lab File: VU043027.D
 Acq: 12 Apr 2021 16:47

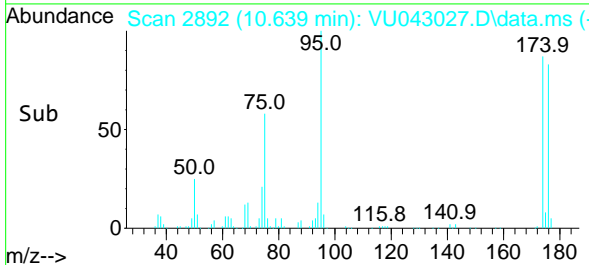
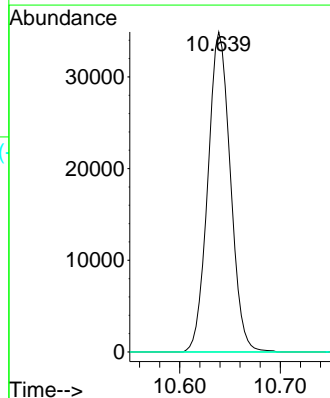
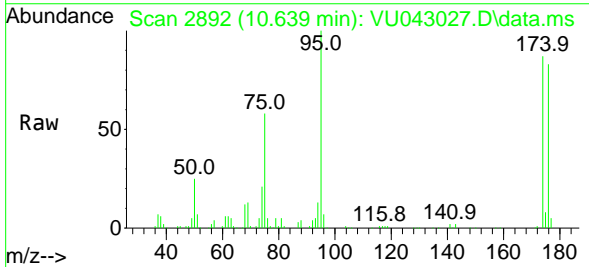
Instrument :
 MSVOA_U
 ClientSampled :
 TRIP-BLANK

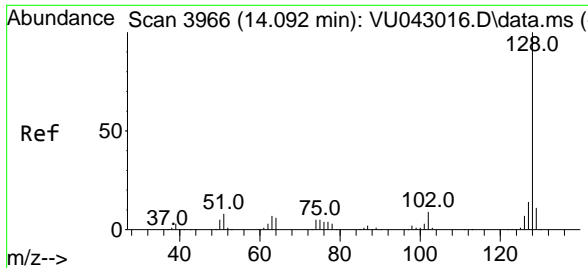
Tgt Ion: 75 Resp: 54383
 Ion Ratio Lower Upper
 75 100
 77 1.0 20.2 60.5#



#81
 trans-1,4-Dichloro-2-butene
 Concen: 55.80 ug/l
 RT: 10.639 min Scan# 2892
 Delta R.T. 0.084 min
 Lab File: VU043027.D
 Acq: 12 Apr 2021 16:47

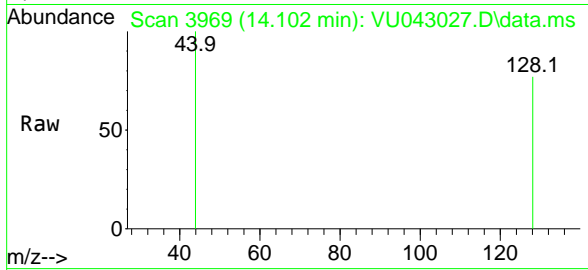
Tgt Ion: 75 Resp: 54383
 Ion Ratio Lower Upper
 75 100
 53 0.0 85.6 128.4#
 89 0.0 35.7 53.5#





#95
 Naphthalene
 Concen: 2.78 ug/l
 RT: 14.102 min Scan# 3969
 Delta R.T. 0.010 min
 Lab File: VU043027.D
 Acq: 12 Apr 2021 16:47

Instrument :
 MSVOA_U
ClientSampled :
 TRIP-BLANK



Tgt Ion:128 Resp: 279

Ion	Ratio	Lower	Upper
128	100		
127	0.0	10.8	16.2#
129	0.0	8.6	13.0#

