

Data Path : Z:\voasrv\HPCHEM1\MSVOA_U\Data\VU041222\
 Data File : VU047959.D
 Acq On : 12 Apr 2022 16:32
 Operator : SY/MD
 Sample : N2345-16
 Misc : 5.0mL/MSVOA_U/WATER
 ALS Vial : 20 Sample Multiplier: 1

Instrument :
 MSVOA_U
 ClientSampleId :

Quant Time: Apr 13 01:36:04 2022
 Quant Method : Z:\voasrv\HPCHEM1\MSVOA_U\Method\SFAMULM032422WMA.M
 Quant Title : VOC Analysis
 QLast Update : Wed Apr 13 01:28:20 2022
 Response via : Initial Calibration

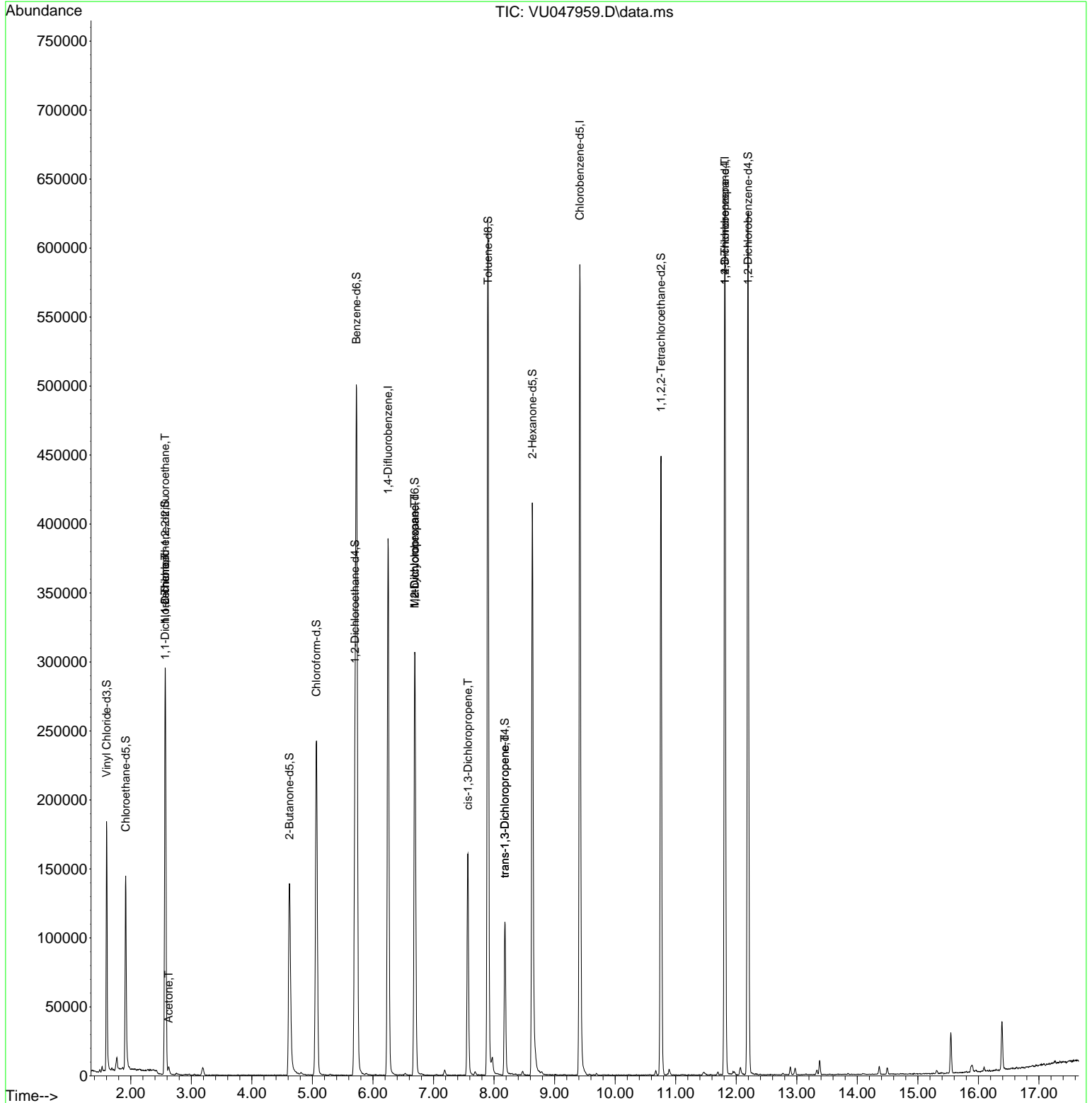
Compound	R.T.	QIon	Response	Conc	Units	Dev(Min)
Internal Standards						
1) 1,4-Difluorobenzene	6.250	114	328448	50.000	ug/L	0.00
28) Chlorobenzene-d5	9.417	117	345496	50.000	ug/L	0.00
58) 1,4-Dichlorobenzene-d4	11.812	152	180412	50.000	ug/L	0.00
System Monitoring Compounds						
4) Vinyl Chloride-d3	1.600	65	131682	55.287	ug/L	0.00
Spiked Amount	50.000	Range 60 - 135	Recovery	=	110.580%	
7) Chloroethane-d5	1.915	69	110113	58.632	ug/L	0.00
Spiked Amount	50.000	Range 70 - 130	Recovery	=	117.260%	
11) 1,1-Dichloroethene-d2	2.568	63	169375	38.868	ug/L	0.00
Spiked Amount	50.000	Range 60 - 125	Recovery	=	77.740%	
21) 2-Butanone-d5	4.620	46	200779	98.212	ug/L	-0.01
Spiked Amount	100.000	Range 40 - 130	Recovery	=	98.210%	
24) Chloroform-d	5.066	84	228248	52.374	ug/L	0.00
Spiked Amount	50.000	Range 70 - 125	Recovery	=	104.740%	
26) 1,2-Dichloroethane-d4	5.703	65	147669	55.247	ug/L	0.00
Spiked Amount	50.000	Range 70 - 125	Recovery	=	110.500%	
32) Benzene-d6	5.729	84	469449	53.999	ug/L	0.00
Spiked Amount	50.000	Range 70 - 125	Recovery	=	108.000%	
36) 1,2-Dichloropropane-d6	6.690	67	149702	56.070	ug/L	0.00
Spiked Amount	50.000	Range 70 - 120	Recovery	=	112.140%	
41) Toluene-d8	7.899	98	423248	49.969	ug/L	0.00
Spiked Amount	50.000	Range 80 - 120	Recovery	=	99.940%	
43) trans-1,3-Dichloroprop...	8.179	79	63245	46.757	ug/L	0.00
Spiked Amount	50.000	Range 60 - 125	Recovery	=	93.520%	
47) 2-Hexanone-d5	8.632	63	145761	93.260	ug/L	0.00
Spiked Amount	100.000	Range 45 - 130	Recovery	=	93.260%	
56) 1,1,2,2-Tetrachloroeth...	10.758	84	222355	48.528	ug/L	0.00
Spiked Amount	50.000	Range 65 - 120	Recovery	=	97.060%	
66) 1,2-Dichlorobenzene-d4	12.195	152	176328	54.936	ug/L	0.00
Spiked Amount	50.000	Range 80 - 120	Recovery	=	109.880%	
Target Compounds						
10) 1,1,2-Trichloro-1,2,2-...	2.568	101	1776	0.734	ug/L #	18
12) 1,1-Dichloroethene	2.565	96	829	0.368	ug/L #	1
13) Acetone	2.626	43	5773	3.035	ug/L	93
35) Methylcyclohexane	6.690	83	34522	8.655	ug/L #	21
37) 1,2-Dichloropropane	6.690	63	15434	6.071	ug/L #	87
39) cis-1,3-Dichloropropene	7.568	75	3608	0.915	ug/L #	60
44) trans-1,3-Dichloropropene	8.179	75	2767	0.703	ug/L #	79
60) 1,2,3-Trichloropropane	11.812	75	18982	5.581	ug/L #	66

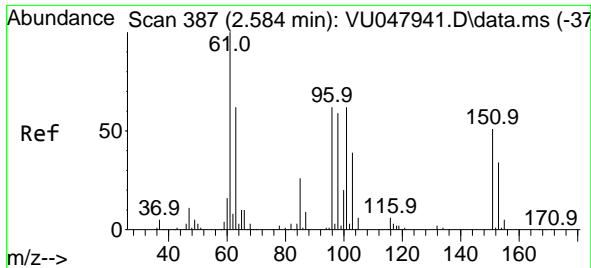
(#) = qualifier out of range (m) = manual integration (+) = signals summed

Data Path : Z:\voasrv\HPCHEM1\MSVOA_U\Data\VU041222\
 Data File : VU047959.D
 Acq On : 12 Apr 2022 16:32
 Operator : SY/MD
 Sample : N2345-16
 Misc : 5.0mL/MSVOA_U/WATER
 ALS Vial : 20 Sample Multiplier: 1

Instrument :
 MSVOA_U
 ClientSampleId :

Quant Time: Apr 13 01:36:04 2022
 Quant Method : Z:\voasrv\HPCHEM1\MSVOA_U\Method\SFAMULM032422WMA.M
 Quant Title : VOC Analysis
 QLast Update : Wed Apr 13 01:28:20 2022
 Response via : Initial Calibration

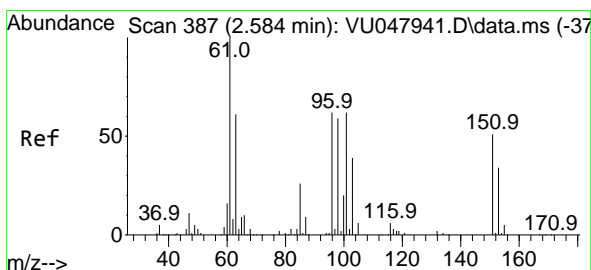
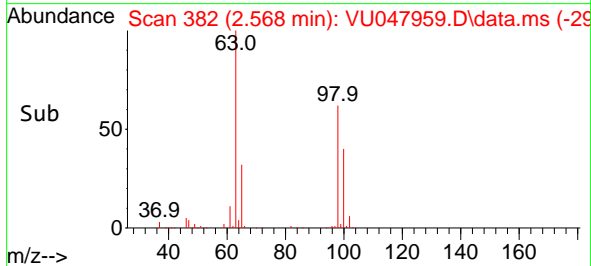
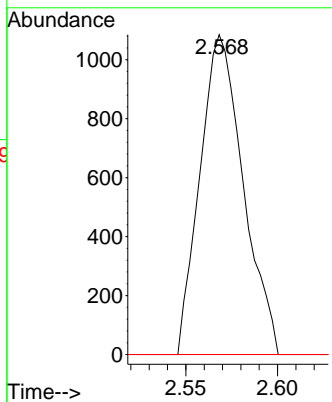
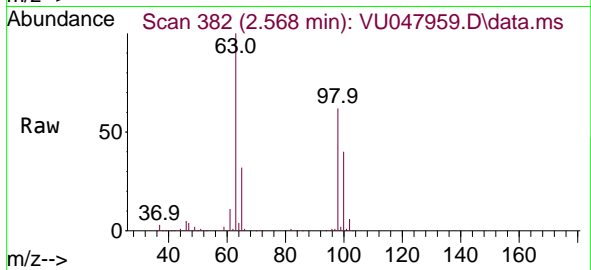




#10
 1,1,2-Trichloro-1,2,2-trifluoroethane
 Concen: 0.734 ug/L
 RT: 2.568 min Scan# 382
 Delta R.T. -0.016 min
 Lab File: VU047959.D
 Acq: 12 Apr 2022 16:32

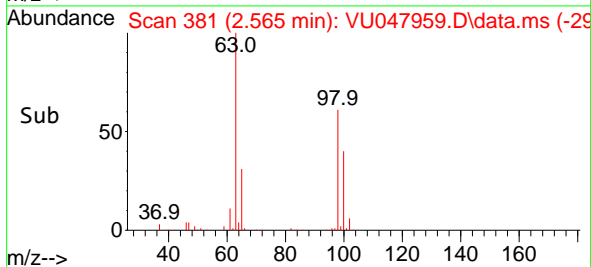
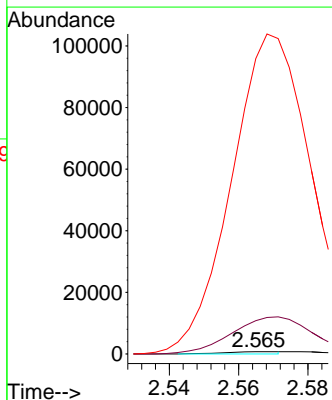
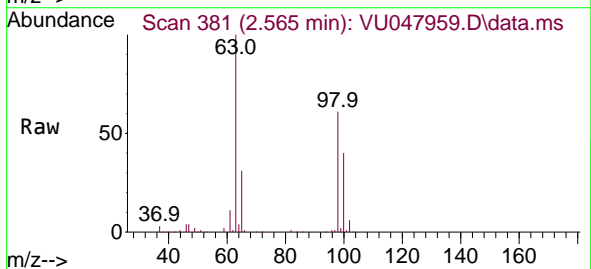
Instrument : MSVOA_U
 ClientSampleId :

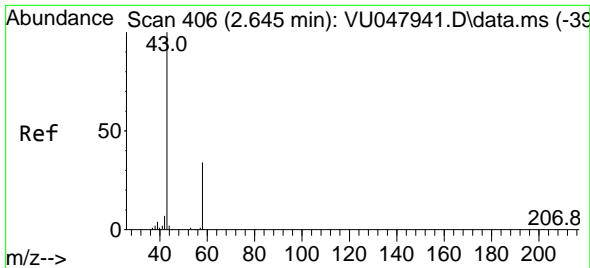
Tgt Ion	Resp	Lower	Upper
101	1776		
101	100		
85	0.0	32.8	49.2#
151	0.0	63.0	94.6#



#12
 1,1-Dichloroethene
 Concen: 0.368 ug/L
 RT: 2.565 min Scan# 381
 Delta R.T. -0.019 min
 Lab File: VU047959.D
 Acq: 12 Apr 2022 16:32

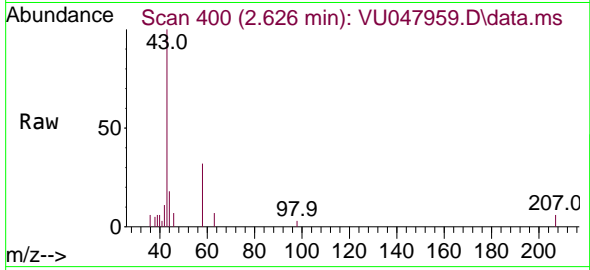
Tgt Ion	Resp	Lower	Upper
96	829		
96	100		
61	1470.8	113.1	210.1#
63	13070.3	94.8	176.0#



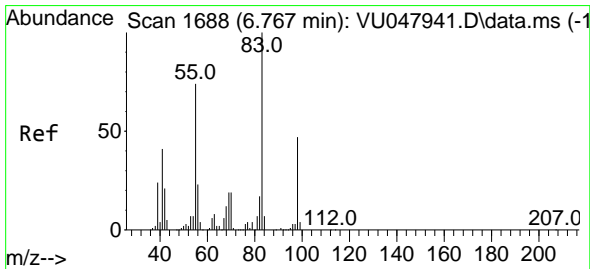
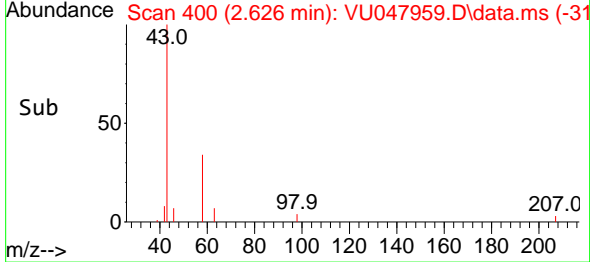
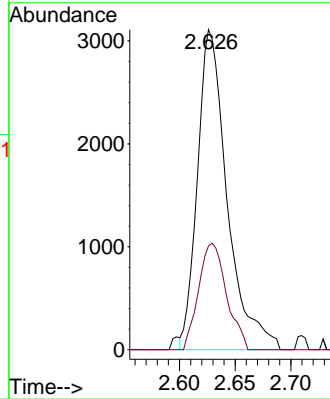


#13
 Acetone
 Concen: 3.035 ug/L
 RT: 2.626 min Scan# 406
 Delta R.T. -0.019 min
 Lab File: VU047959.D
 Acq: 12 Apr 2022 16:32

Instrument : MSVOA_U
 ClientSampleId :

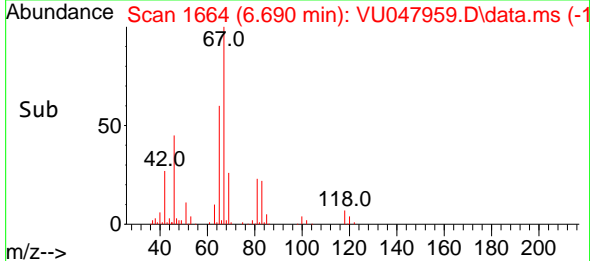
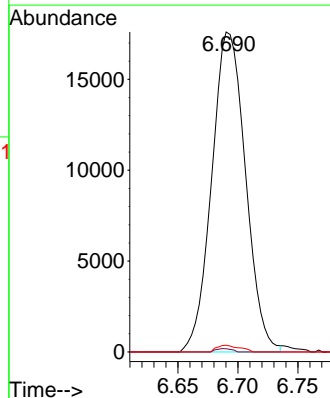
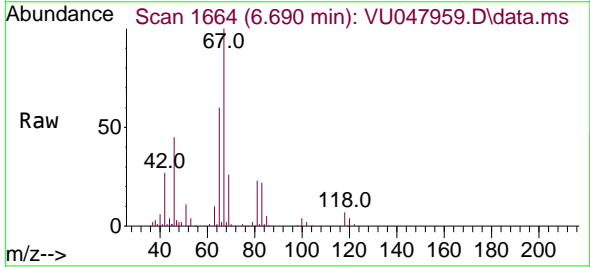


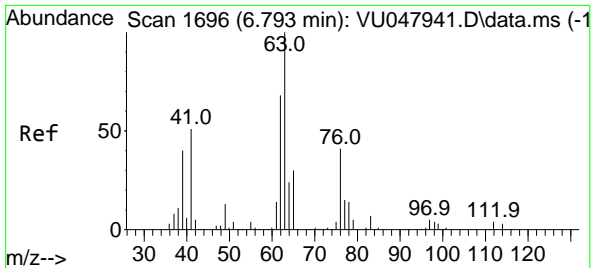
Tgt Ion: 43 Resp: 5773
 Ion Ratio Lower Upper
 43 100
 58 31.2 0.0 70.0



#35
 Methylcyclohexane
 Concen: 8.655 ug/L
 RT: 6.690 min Scan# 1664
 Delta R.T. -0.077 min
 Lab File: VU047959.D
 Acq: 12 Apr 2022 16:32

Tgt Ion: 83 Resp: 34522
 Ion Ratio Lower Upper
 83 100
 55 0.5 56.8 85.2#
 98 1.4 38.1 57.1#

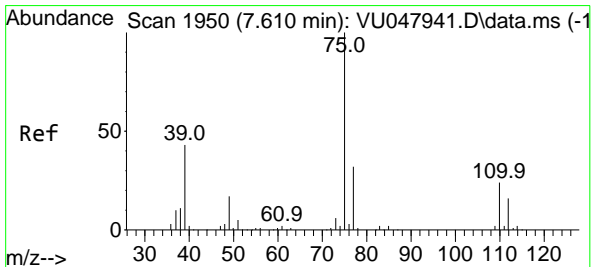
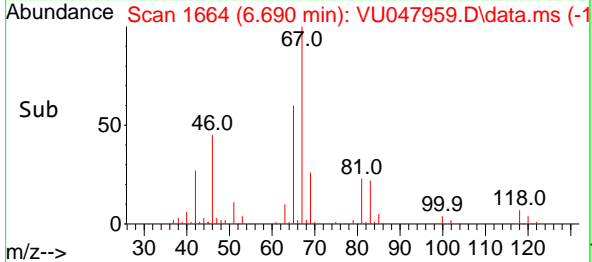
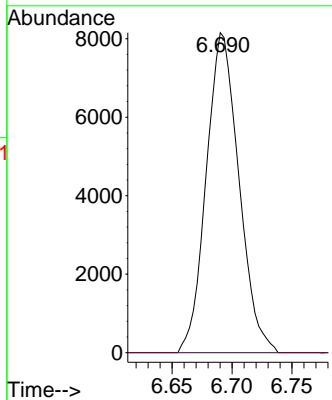
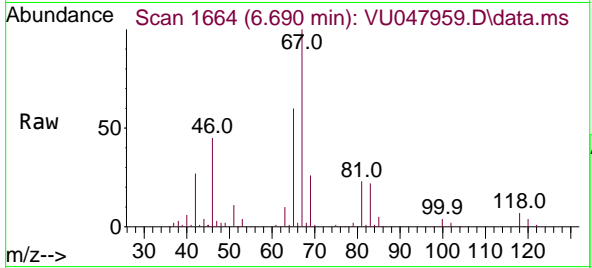




#37
 1,2-Dichloropropane
 Concen: 6.071 ug/L
 RT: 6.690 min Scan# 1696
 Delta R.T. -0.103 min
 Lab File: VU047959.D
 Acq: 12 Apr 2022 16:32

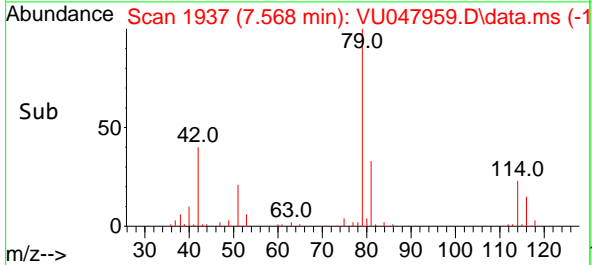
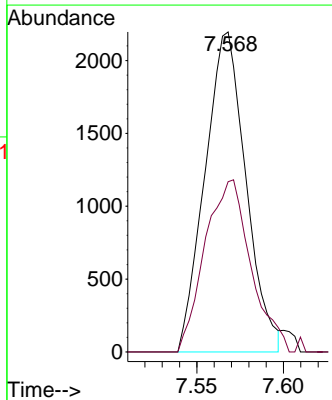
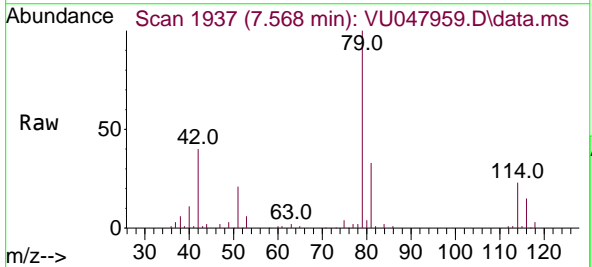
Instrument : MSVOA_U
 ClientSampleId :

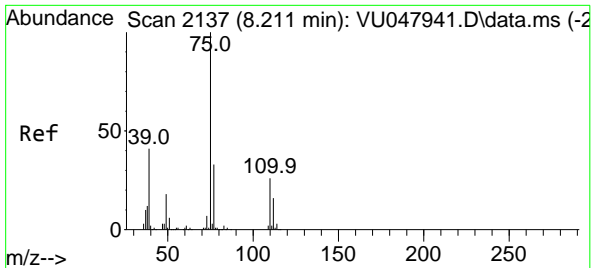
Tgt Ion: 63 Resp: 15434
 Ion Ratio Lower Upper
 63 100
 112 0.0 3.4 5.2#



#39
 cis-1,3-Dichloropropene
 Concen: 0.915 ug/L
 RT: 7.568 min Scan# 1937
 Delta R.T. -0.042 min
 Lab File: VU047959.D
 Acq: 12 Apr 2022 16:32

Tgt Ion: 75 Resp: 3608
 Ion Ratio Lower Upper
 75 100
 77 53.2 21.8 40.6#

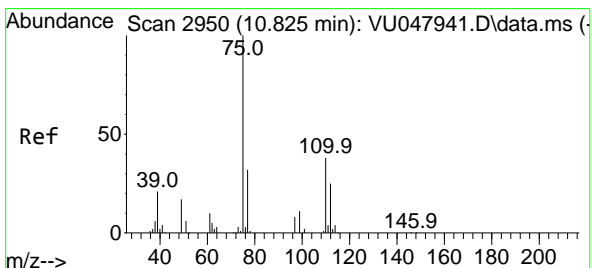
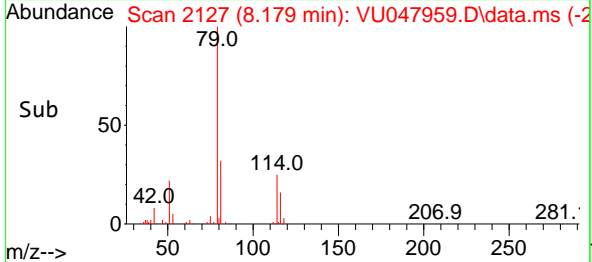
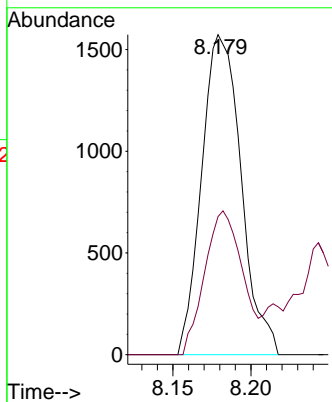
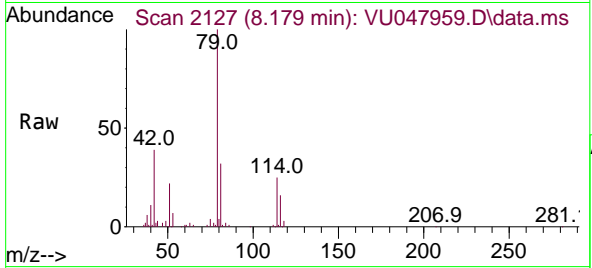




#44
 trans-1,3-Dichloropropene
 Concen: 0.703 ug/L
 RT: 8.179 min Scan# 2137
 Delta R.T. -0.032 min
 Lab File: VU047959.D
 Acq: 12 Apr 2022 16:32

Instrument : MSVOA_U
 ClientSampleId :

Tgt Ion: 75 Resp: 2767
 Ion Ratio Lower Upper
 75 100
 77 43.2 22.0 40.8#



#60
 1,2,3-Trichloropropane
 Concen: 5.581 ug/L
 RT: 11.812 min Scan# 3257
 Delta R.T. 0.987 min
 Lab File: VU047959.D
 Acq: 12 Apr 2022 16:32

Tgt Ion: 75 Resp: 18982
 Ion Ratio Lower Upper
 75 100
 77 33.3 26.0 39.0
 110 1.7 31.4 47.2#

