

Data Path : Z:\voasrv\HPCHEM1\MSVOA_U\Data\VU041223\
 Data File : VU053675.D
 Acq On : 12 Apr 2023 20:29
 Operator : JC/MD
 Sample : VSTDCCC050EC
 Misc : 5.0mL/MSVOA_U/WATER
 ALS Vial : 24 Sample Multiplier: 1

Instrument :
 MSVOA_U
 ClientSampleId :
 VSTD050196

Quant Time: Apr 13 01:44:45 2023
 Quant Method : Z:\voasrv\HPCHEM1\MSVOA_U\Method\SFAMULM033123WMA.M
 Quant Title : VOC Analysis
 QLast Update : Thu Apr 13 01:39:36 2023
 Response via : Initial Calibration

Compound	R.T.	QIon	Response	Conc	Units	Dev(Min)
Internal Standards						
1) 1,4-Difluorobenzene	6.244	114	256121	50.000	ug/L	0.00
28) Chlorobenzene-d5	9.414	117	248138	50.000	ug/L	0.00
58) 1,4-Dichlorobenzene-d4	11.809	152	136980	50.000	ug/L	0.00
System Monitoring Compounds						
4) Vinyl Chloride-d3	1.597	65	86019	43.132	ug/L	0.00
Spiked Amount	50.000	Range 60 - 135	Recovery =	86.260%		
7) Chloroethane-d5	1.906	69	68346	44.448	ug/L	0.00
Spiked Amount	50.000	Range 70 - 130	Recovery =	88.900%		
11) 1,1-Dichloroethene-d2	2.565	63	130676	42.329	ug/L	0.00
Spiked Amount	50.000	Range 60 - 125	Recovery =	84.660%		
21) 2-Butanone-d5	4.613	46	91050	100.837	ug/L	0.00
Spiked Amount	100.000	Range 40 - 130	Recovery =	100.840%		
24) Chloroform-d	5.057	84	141166	42.800	ug/L	0.00
Spiked Amount	50.000	Range 70 - 125	Recovery =	85.600%		
26) 1,2-Dichloroethane-d4	5.697	65	86867	44.571	ug/L	0.00
Spiked Amount	50.000	Range 70 - 125	Recovery =	89.140%		
32) Benzene-d6	5.723	84	281560	42.037	ug/L	0.00
Spiked Amount	50.000	Range 70 - 125	Recovery =	84.080%		
36) 1,2-Dichloropropane-d6	6.684	67	88339	43.150	ug/L	0.00
Spiked Amount	50.000	Range 70 - 120	Recovery =	86.300%		
41) Toluene-d8	7.893	98	272580	40.945	ug/L	0.00
Spiked Amount	50.000	Range 80 - 120	Recovery =	81.900%		
43) trans-1,3-Dichloroprop...	8.173	79	43888	41.530	ug/L	0.00
Spiked Amount	50.000	Range 60 - 125	Recovery =	83.060%		
47) 2-Hexanone-d5	8.626	63	72013	103.067	ug/L	0.00
Spiked Amount	100.000	Range 45 - 130	Recovery =	103.070%		
56) 1,1,2,2-Tetrachloroeth...	10.751	84	134682	46.676	ug/L	0.00
Spiked Amount	50.000	Range 65 - 120	Recovery =	93.360%		
66) 1,2-Dichlorobenzene-d4	12.189	152	110791	38.748	ug/L	0.00
Spiked Amount	50.000	Range 80 - 120	Recovery =	77.500%#		
Target Compounds						
2) Dichlorodifluoromethane	1.382	85	85201	40.986	ug/L	99
3) Chloromethane	1.520	50	87154	51.022	ug/L	98
5) Vinyl chloride	1.601	62	104219	52.646	ug/L	95
6) Bromomethane	1.848	94	60512	42.010	ug/L	96
8) Chloroethane	1.929	64	61579	51.719	ug/L	97
9) Trichlorofluoromethane	2.134	101	143830	47.237	ug/L	99
10) 1,1,2-Trichloro-1,2,2-...	2.575	101	77410	43.898	ug/L	92
12) 1,1-Dichloroethene	2.575	96	67381	42.875	ug/L	97
13) Acetone	2.620	43	61705	76.041	ug/L	95
14) Carbon disulfide	2.787	76	175042	42.105	ug/L	96
15) Methyl Acetate	2.941	43	68255	54.915	ug/L	98
16) Methylene chloride	3.041	84	81440	46.104	ug/L	98
17) trans-1,2-Dichloroethene	3.347	96	68679	43.483	ug/L	92
18) Methyl tert-butyl Ether	3.356	73	219673	47.717	ug/L	99
19) 1,1-Dichloroethane	3.864	63	129398	49.458	ug/L	99
20) cis-1,2-Dichloroethene	4.662	96	81460	44.652	ug/L	89
22) 2-Butanone	4.694	43	97498	99.175	ug/L	96
23) Bromochloromethane	4.967	128	42766	42.085	ug/L	91
25) Chloroform	5.083	83	141824	47.261	ug/L	98

Data Path : Z:\voasrv\HPCHEM1\MSVOA_U\Data\VU041223\
 Data File : VU053675.D
 Acq On : 12 Apr 2023 20:29
 Operator : JC/MD
 Sample : VSTDCCC050EC
 Misc : 5.0mL/MSVOA_U/WATER
 ALS Vial : 24 Sample Multiplier: 1

Instrument :
 MSVOA_U
 ClientSampleId :
 VSTD050196

Quant Time: Apr 13 01:44:45 2023
 Quant Method : Z:\voasrv\HPCHEM1\MSVOA_U\Method\SFAMULM033123WMA.M
 Quant Title : VOC Analysis
 QLast Update : Thu Apr 13 01:39:36 2023
 Response via : Initial Calibration

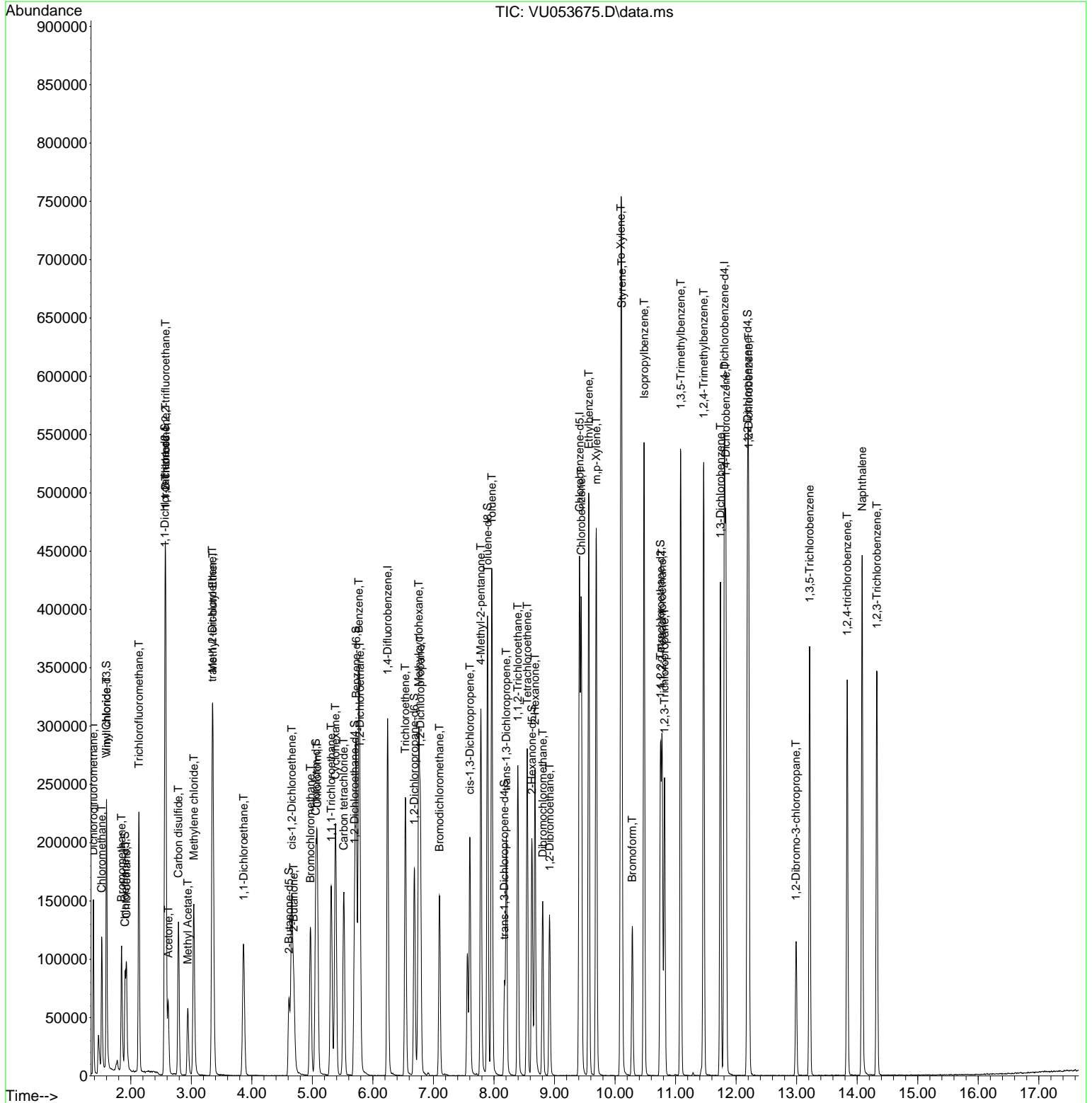
Compound	R.T.	QIon	Response	Conc	Units	Dev(Min)
27) 1,2-Dichloroethane	5.787	62	109097	49.643	ug/L	96
29) Cyclohexane	5.382	56	105341	44.098	ug/L	98
30) 1,1,1-Trichloroethane	5.311	97	123131	45.034	ug/L	98
31) Carbon tetrachloride	5.517	117	104149	42.515	ug/L	100
33) Benzene	5.768	78	300873	46.538	ug/L	100
34) Trichloroethene	6.536	95	81685	41.775	ug/L	94
35) Methylcyclohexane	6.758	83	121007	42.100	ug/L	97
37) 1,2-Dichloropropane	6.784	63	79954	48.705	ug/L	98
38) Bromodichloromethane	7.099	83	101753	46.464	ug/L	98
39) cis-1,3-Dichloropropene	7.604	75	123917	46.193	ug/L	99
40) 4-Methyl-2-pentanone	7.784	43	190349	106.704	ug/L	98
42) Toluene	7.964	91	327562	44.709	ug/L	99
44) trans-1,3-Dichloropropene	8.205	75	117808	46.455	ug/L	98
45) 1,1,2-Trichloroethane	8.395	97	84105	46.664	ug/L	95
46) Tetrachloroethene	8.549	164	61151	37.686	ug/L	95
48) 2-Hexanone	8.678	43	149806	103.814	ug/L	98
49) Dibromochloromethane	8.806	129	78598	41.940	ug/L	98
50) 1,2-Dibromoethane	8.919	107	90966	45.112	ug/L	99
51) Chlorobenzene	9.443	112	222862	44.149	ug/L	96
52) Ethylbenzene	9.565	91	359399	44.066	ug/L	99
53) m,p-Xylene	9.690	106	139933	43.870	ug/L	100
54) o-Xylene	10.095	106	136556	43.300	ug/L	95
55) Styrene	10.112	104	233772	45.510	ug/L	98
57) 1,1,2,2-Tetrachloroethane	10.777	83	140446	53.074	ug/L	94
59) Bromoform	10.285	173	57349	40.903	ug/L	99
60) 1,2,3-Trichloropropane	10.819	75	108258	54.506	ug/L	97
61) Isopropylbenzene	10.481	105	357951	44.199	ug/L	99
62) 1,3,5-Trimethylbenzene	11.086	105	296999	44.115	ug/L	99
63) 1,2,4-Trimethylbenzene	11.465	105	296882	44.524	ug/L	98
64) 1,3-Dichlorobenzene	11.742	146	172748	40.822	ug/L	97
65) 1,4-Dichlorobenzene	11.832	146	178926	41.486	ug/L	97
67) 1,2-Dichlorobenzene	12.208	146	175731	41.666	ug/L	98
68) 1,2-Dibromo-3-chloropr...	12.989	75	27895	52.683	ug/L	88
69) 1,3,5-Trichlorobenzene	13.214	180	114076	36.403	ug/L	98
70) 1,2,4-trichlorobenzene	13.835	180	104224	35.873	ug/L	99
71) Naphthalene	14.082	128	359977	41.394	ug/L	100
72) 1,2,3-Trichlorobenzene	14.327	180	108248	37.302	ug/L	98

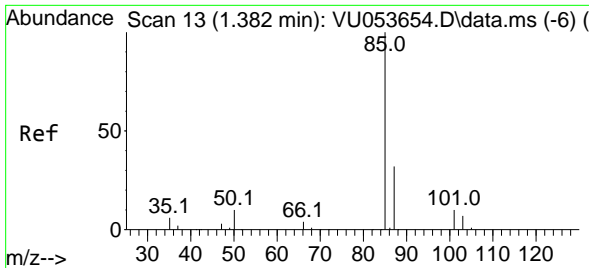
(#) = qualifier out of range (m) = manual integration (+) = signals summed

Data Path : Z:\voasrv\HPCHEM1\MSVOA_U\Data\VU041223\
 Data File : VU053675.D
 Acq On : 12 Apr 2023 20:29
 Operator : JC/MD
 Sample : VSTDCCC050EC
 Misc : 5.0mL/MSVOA_U/WATER
 ALS Vial : 24 Sample Multiplier: 1

Instrument :
 MSVOA_U
 ClientSampleId :
 VSTD050196

Quant Time: Apr 13 01:44:45 2023
 Quant Method : Z:\voasrv\HPCHEM1\MSVOA_U\Method\SFAMULM033123WMA.M
 Quant Title : VOC Analysis
 QLast Update : Thu Apr 13 01:39:36 2023
 Response via : Initial Calibration

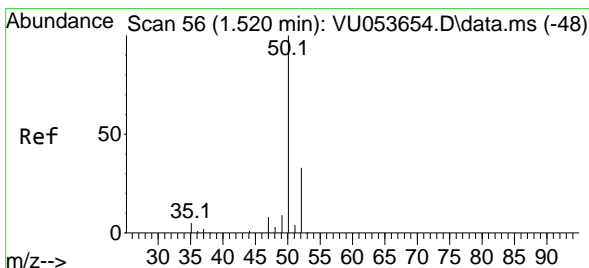
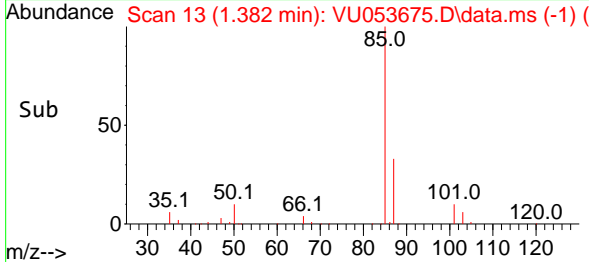
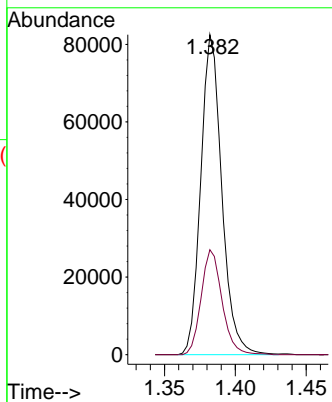
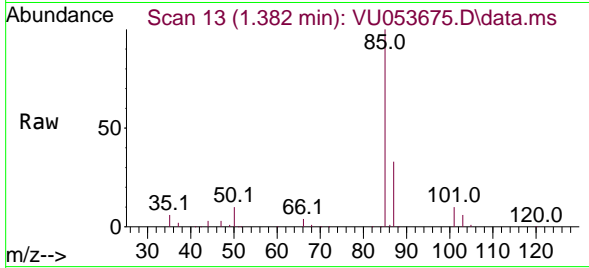




#2
 Dichlorodifluoromethane
 Concen: 40.986 ug/L
 RT: 1.382 min Scan# 11
 Delta R.T. 0.000 min
 Lab File: VU053675.D
 Acq: 12 Apr 2023 20:29

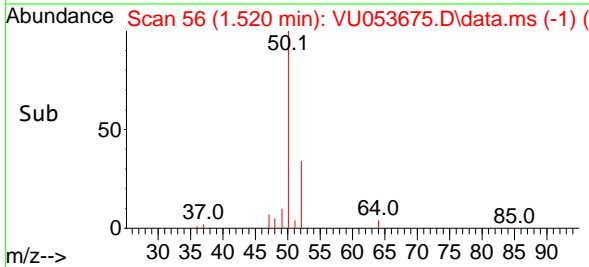
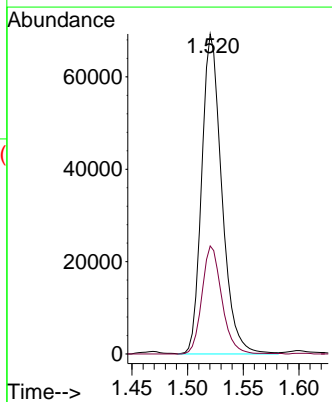
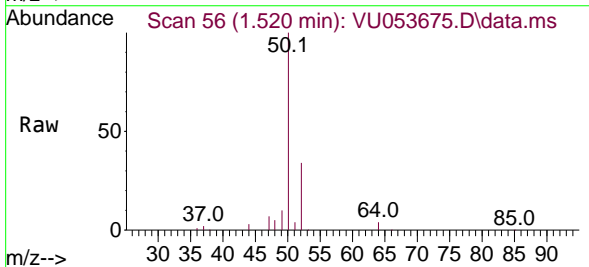
Instrument :
 MSVOA_U
 ClientSampleId :
 VSTD050196

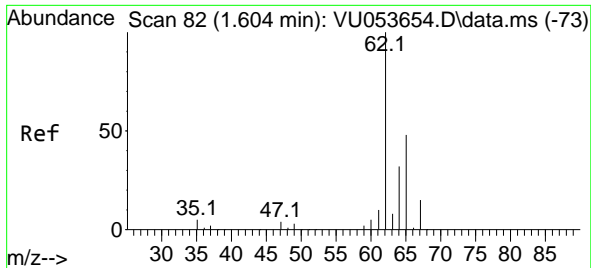
Tgt Ion: 85 Resp: 85201
 Ion Ratio Lower Upper
 85 100
 87 32.5 26.4 39.6



#3
 Chloromethane
 Concen: 51.022 ug/L
 RT: 1.520 min Scan# 56
 Delta R.T. 0.000 min
 Lab File: VU053675.D
 Acq: 12 Apr 2023 20:29

Tgt Ion: 50 Resp: 87154
 Ion Ratio Lower Upper
 50 100
 52 33.8 22.7 42.1

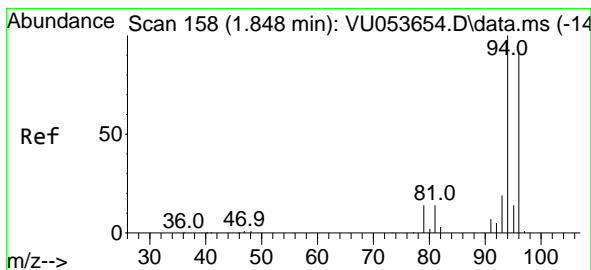
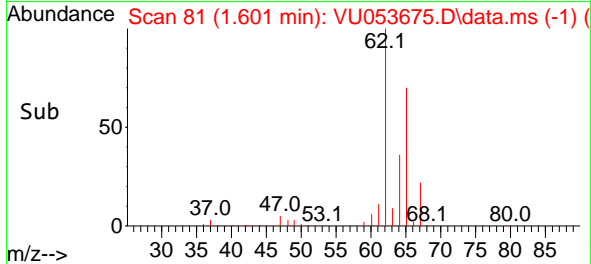
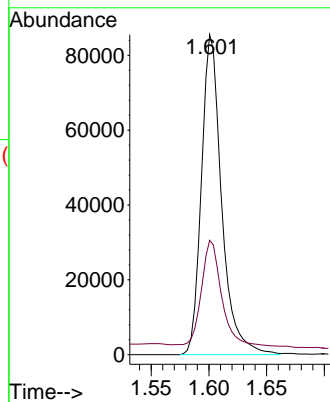
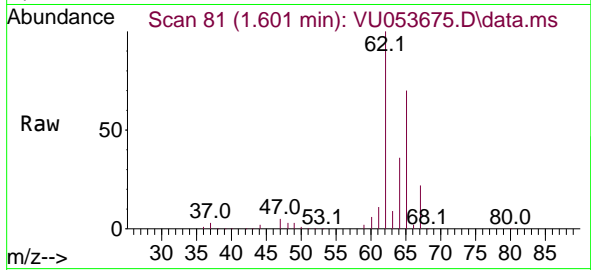




#5
 Vinyl chloride
 Concen: 52.646 ug/L
 RT: 1.601 min Scan# 81
 Delta R.T. -0.003 min
 Lab File: VU053675.D
 Acq: 12 Apr 2023 20:29

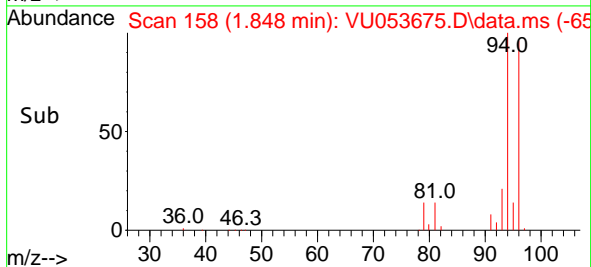
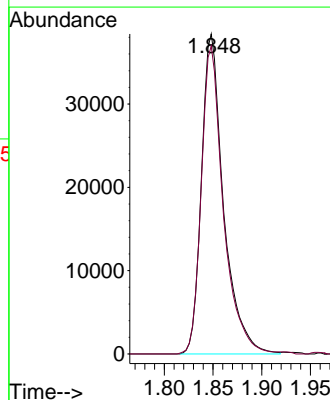
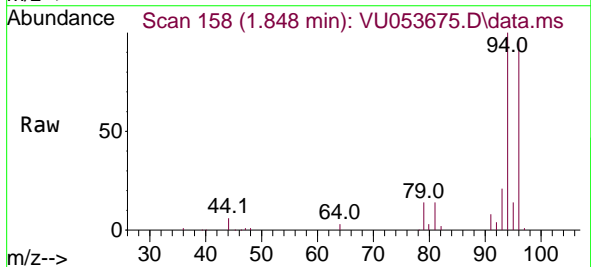
Instrument :
 MSVOA_U
 ClientSampleId :
 VSTD050196

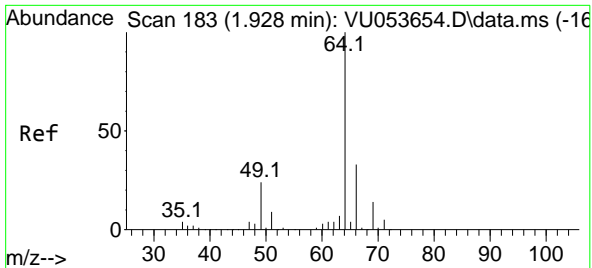
Tgt Ion: 62 Resp: 104219
 Ion Ratio Lower Upper
 62 100
 64 35.7 23.2 43.0



#6
 Bromomethane
 Concen: 42.010 ug/L
 RT: 1.848 min Scan# 158
 Delta R.T. 0.000 min
 Lab File: VU053675.D
 Acq: 12 Apr 2023 20:29

Tgt Ion: 94 Resp: 60512
 Ion Ratio Lower Upper
 94 100
 96 96.2 64.4 119.6

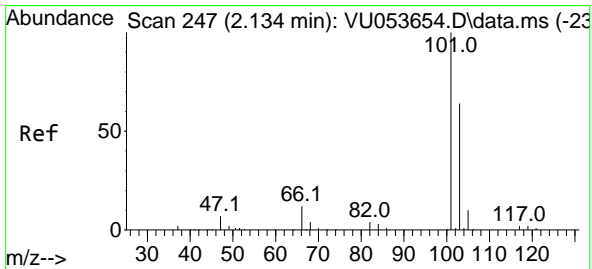
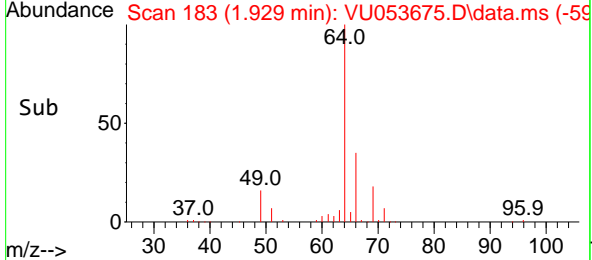
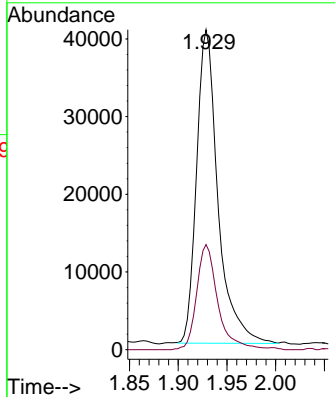
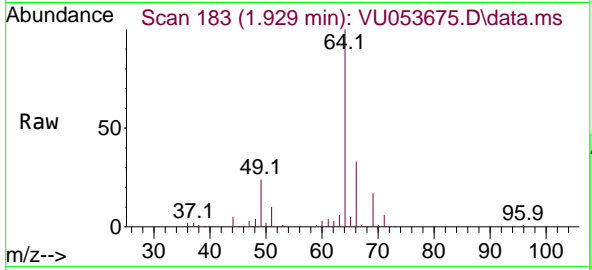




#8
 Chloroethane
 Concen: 51.719 ug/L
 RT: 1.929 min Scan# 183
 Delta R.T. 0.000 min
 Lab File: VU053675.D
 Acq: 12 Apr 2023 20:29

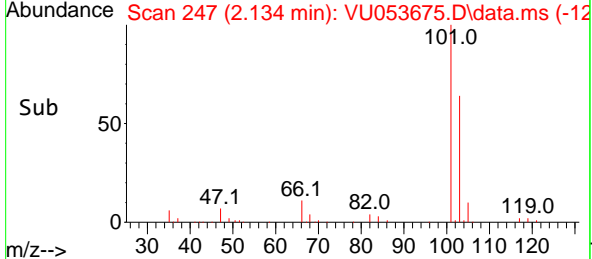
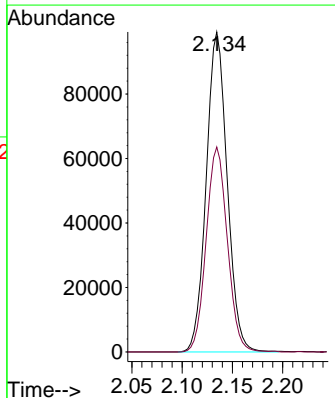
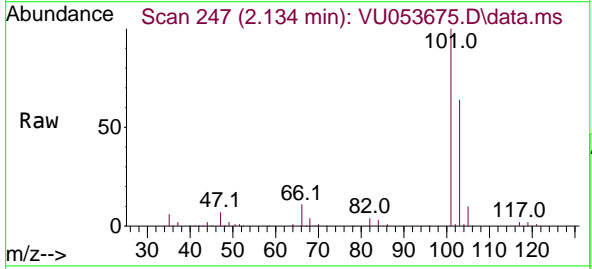
Instrument : MSVOA_U
 ClientSampleId : VSTD050196

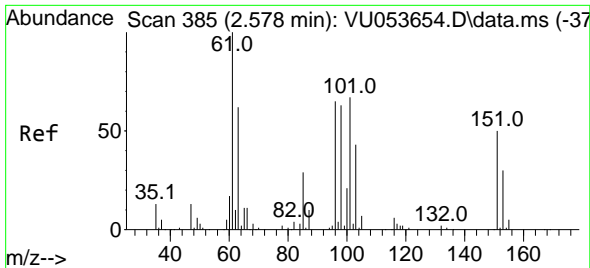
Tgt Ion: 64 Resp: 61579
 Ion Ratio Lower Upper
 64 100
 66 32.9 21.8 40.6



#9
 Trichlorofluoromethane
 Concen: 47.237 ug/L
 RT: 2.134 min Scan# 247
 Delta R.T. 0.000 min
 Lab File: VU053675.D
 Acq: 12 Apr 2023 20:29

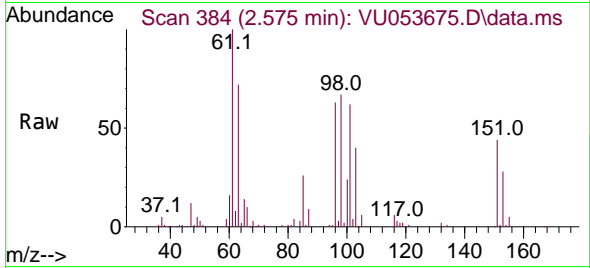
Tgt Ion:101 Resp: 143830
 Ion Ratio Lower Upper
 101 100
 103 64.6 52.5 78.7



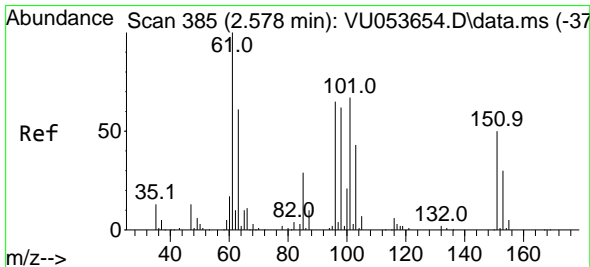
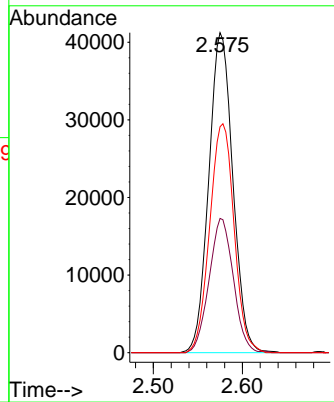
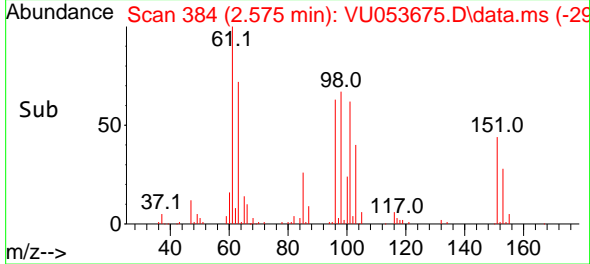


#10
 1,1,2-Trichloro-1,2,2-trifluoroethane
 Concen: 43.898 ug/L
 RT: 2.575 min Scan# 384
 Delta R.T. -0.003 min
 Lab File: VU053675.D
 Acq: 12 Apr 2023 20:29

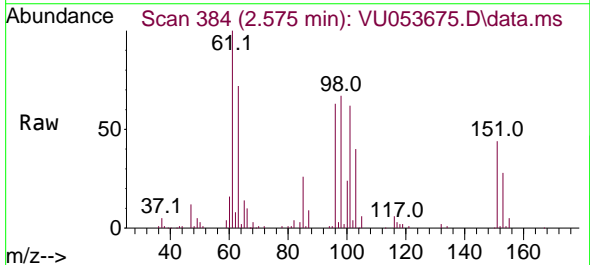
Instrument :
 MSVOA_U
 ClientSampleId :
 VSTD050196



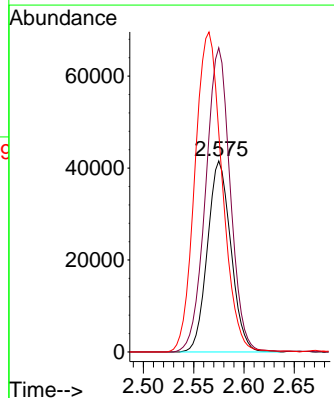
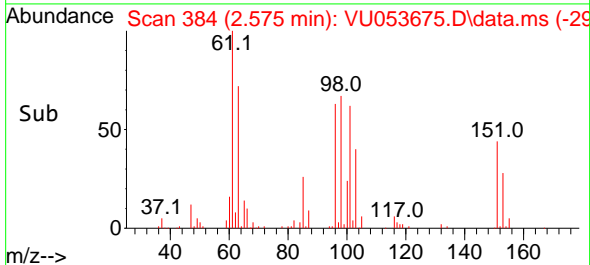
Tgt Ion:101 Resp: 77410
 Ion Ratio Lower Upper
 101 100
 85 42.1 32.6 48.8
 151 72.5 65.8 98.6

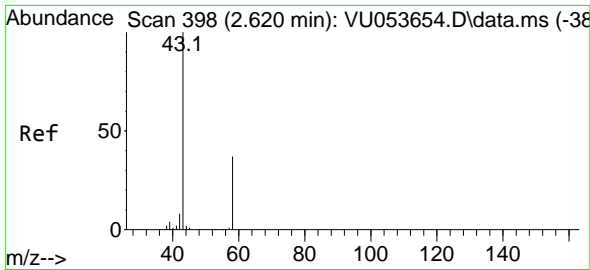


#12
 1,1-Dichloroethene
 Concen: 42.875 ug/L
 RT: 2.575 min Scan# 384
 Delta R.T. -0.003 min
 Lab File: VU053675.D
 Acq: 12 Apr 2023 20:29



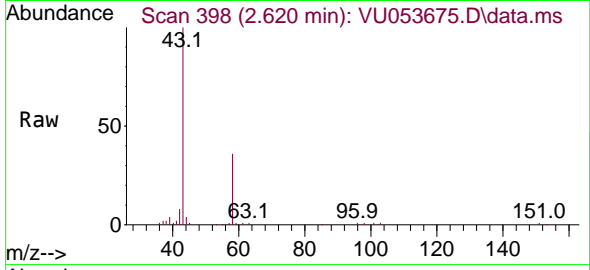
Tgt Ion: 96 Resp: 67381
 Ion Ratio Lower Upper
 96 100
 61 159.2 107.9 200.5
 63 114.9 79.1 146.9



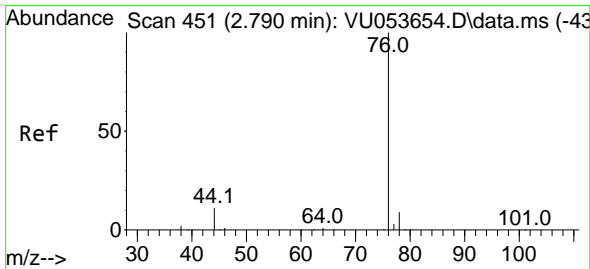
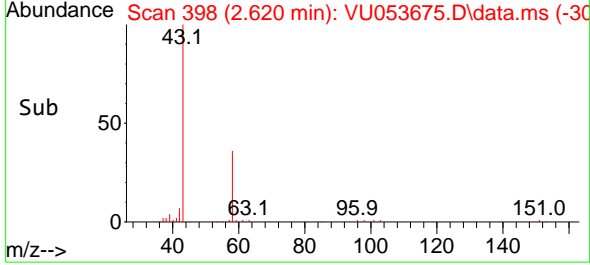
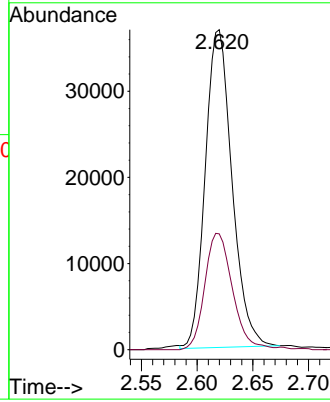


#13
 Acetone
 Concen: 76.041 ug/L
 RT: 2.620 min Scan# 398
 Delta R.T. 0.000 min
 Lab File: VU053675.D
 Acq: 12 Apr 2023 20:29

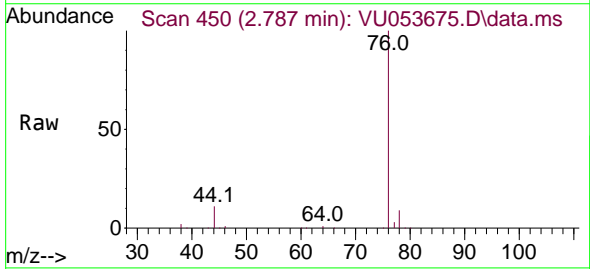
Instrument :
 MSVOA_U
 ClientSampleId :
 VSTD050196



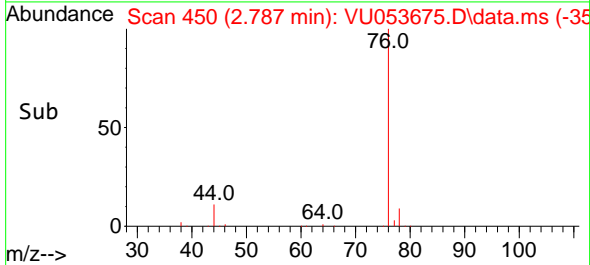
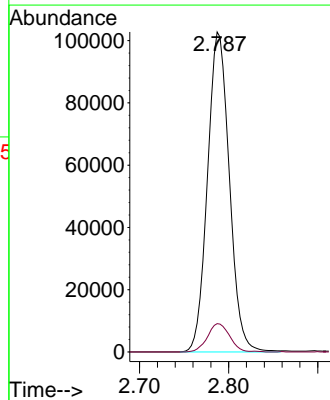
Tgt Ion: 43 Resp: 61705
 Ion Ratio Lower Upper
 43 100
 58 37.8 0.0 70.2

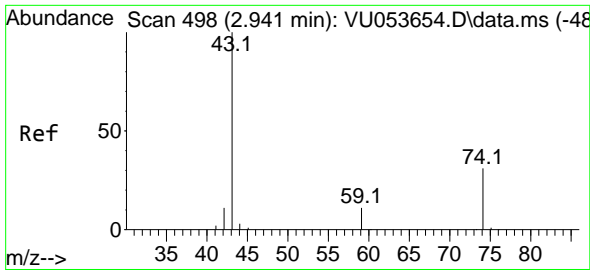


#14
 Carbon disulfide
 Concen: 42.105 ug/L
 RT: 2.787 min Scan# 450
 Delta R.T. -0.003 min
 Lab File: VU053675.D
 Acq: 12 Apr 2023 20:29



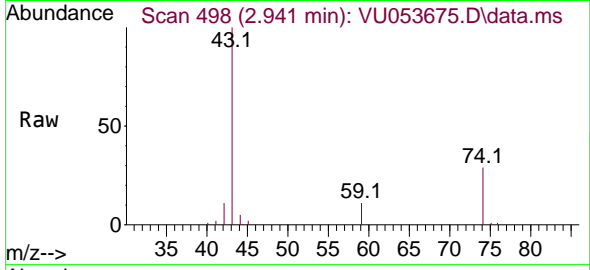
Tgt Ion: 76 Resp: 175042
 Ion Ratio Lower Upper
 76 100
 78 8.8 8.2 12.2



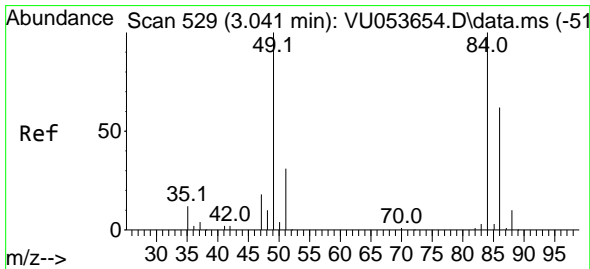
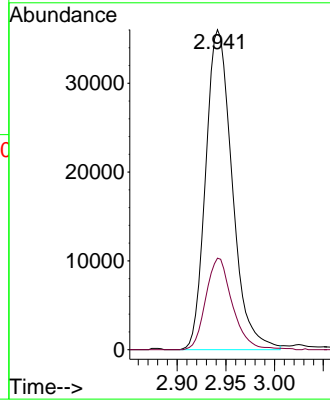
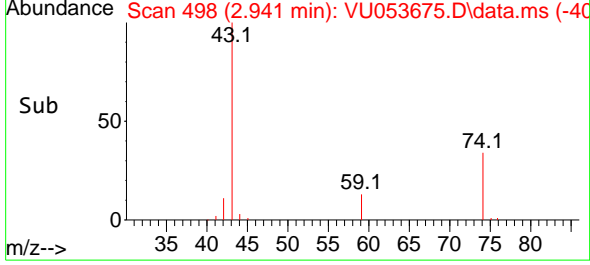


#15
Methyl Acetate
Concen: 54.915 ug/L
RT: 2.941 min Scan# 498
Delta R.T. 0.000 min
Lab File: VU053675.D
Acq: 12 Apr 2023 20:29

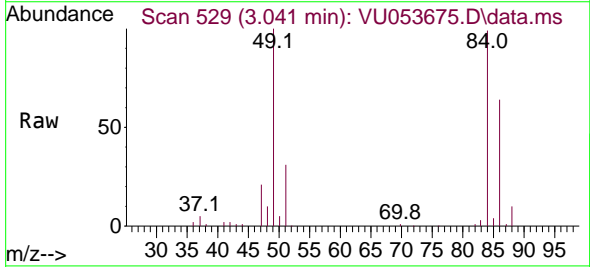
Instrument : MSVOA_U
ClientSampleId : VSTD050196



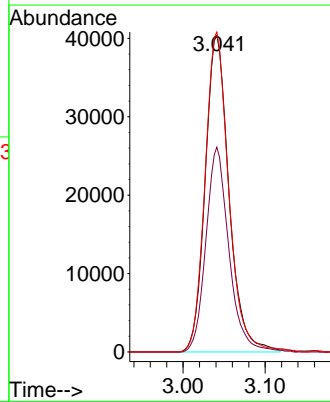
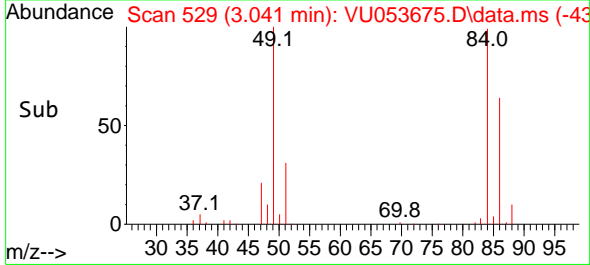
Tgt Ion: 43 Resp: 68255
Ion Ratio Lower Upper
43 100
74 28.6 22.0 33.0

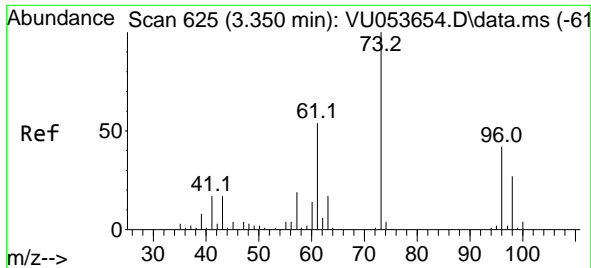


#16
Methylene chloride
Concen: 46.104 ug/L
RT: 3.041 min Scan# 529
Delta R.T. 0.000 min
Lab File: VU053675.D
Acq: 12 Apr 2023 20:29



Tgt Ion: 84 Resp: 81440
Ion Ratio Lower Upper
84 100
86 64.7 43.5 80.9
49 101.1 69.7 129.5





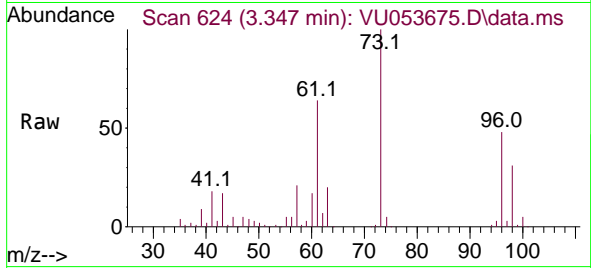
#17
 trans-1,2-Dichloroethene
 Concen: 43.483 ug/L
 RT: 3.347 min Scan# 61
 Delta R.T. -0.003 min
 Lab File: VU053675.D
 Acq: 12 Apr 2023 20:29

Instrument :

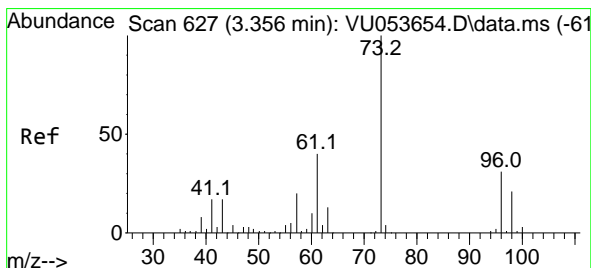
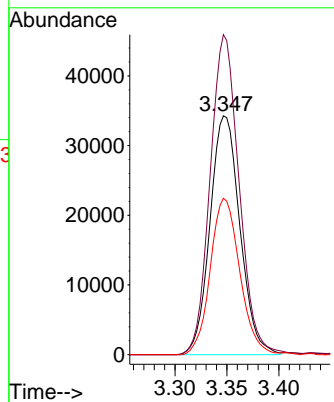
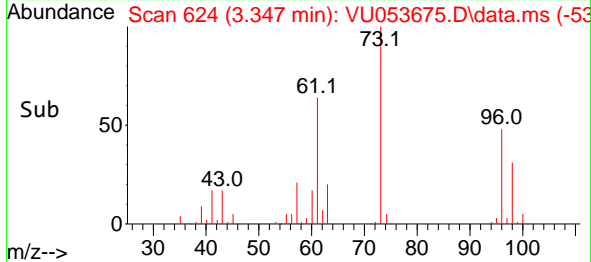
MSVOA_U

ClientSampleId :

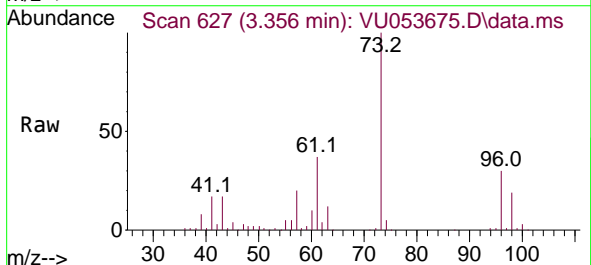
VSTD050196



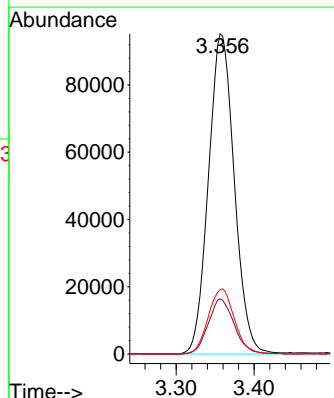
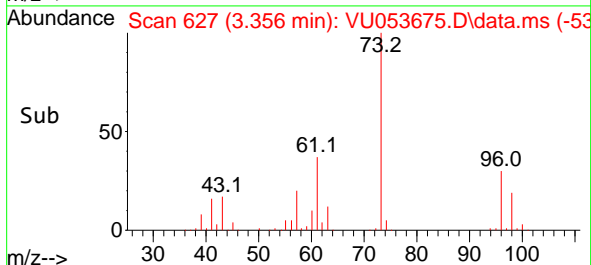
Tgt Ion: 96 Resp: 68679
 Ion Ratio Lower Upper
 96 100
 61 133.9 84.4 156.8
 98 65.4 46.0 85.4

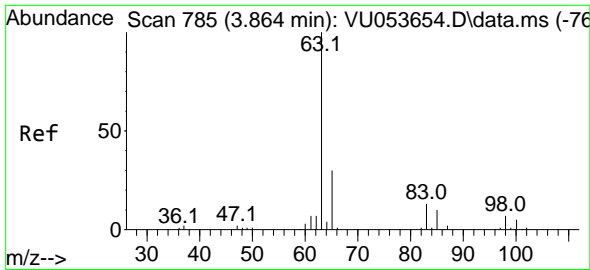


#18
 Methyl tert-butyl Ether
 Concen: 47.717 ug/L
 RT: 3.356 min Scan# 627
 Delta R.T. 0.000 min
 Lab File: VU053675.D
 Acq: 12 Apr 2023 20:29



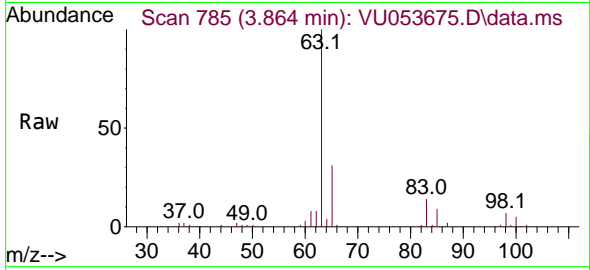
Tgt Ion: 73 Resp: 219673
 Ion Ratio Lower Upper
 73 100
 43 17.2 13.8 20.8
 57 20.6 15.9 23.9





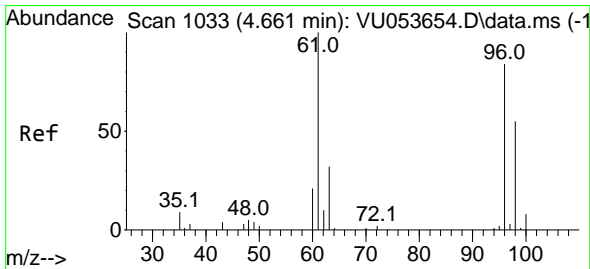
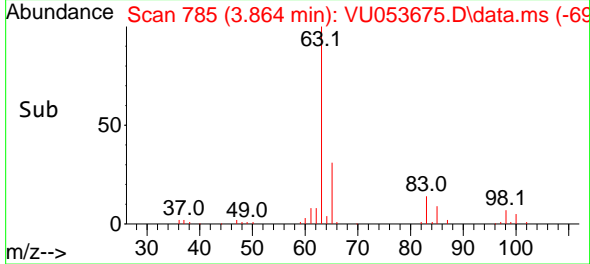
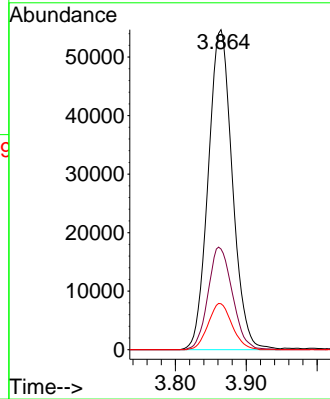
#19
 1,1-Dichloroethane
 Concen: 49.458 ug/L
 RT: 3.864 min Scan# 785
 Delta R.T. 0.000 min
 Lab File: VU053675.D
 Acq: 12 Apr 2023 20:29

Instrument : MSVOA_U
 ClientSampleId : VSTD050196

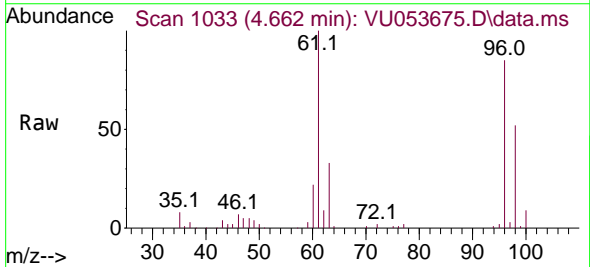


Tgt Ion: 63 Resp: 129398

Ion	Ratio	Lower	Upper
63	100		
65	31.5	22.0	41.0
83	14.3	10.8	20.0

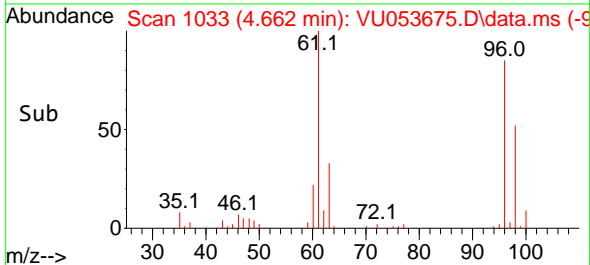
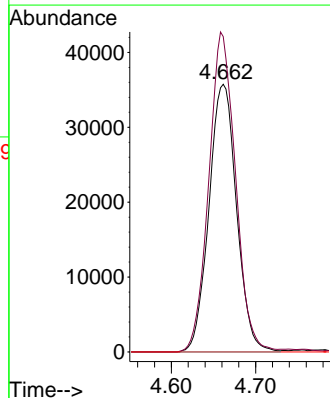


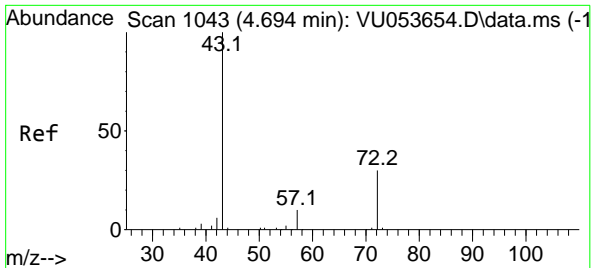
#20
 cis-1,2-Dichloroethene
 Concen: 44.652 ug/L
 RT: 4.662 min Scan# 1033
 Delta R.T. 0.000 min
 Lab File: VU053675.D
 Acq: 12 Apr 2023 20:29



Tgt Ion: 96 Resp: 81460

Ion	Ratio	Lower	Upper
96	100		
61	117.8	74.7	138.7
68	0.0	0.0	0.0

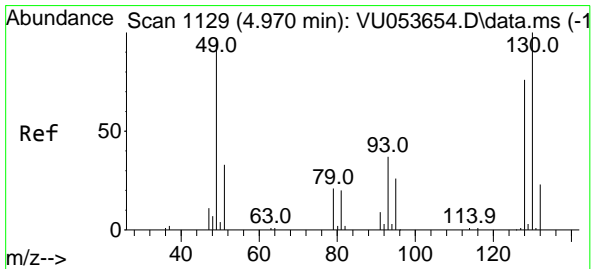
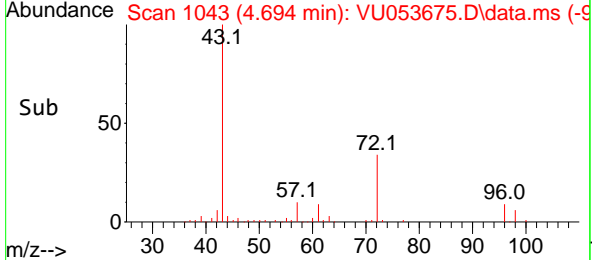
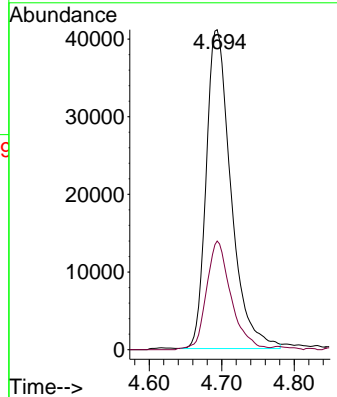
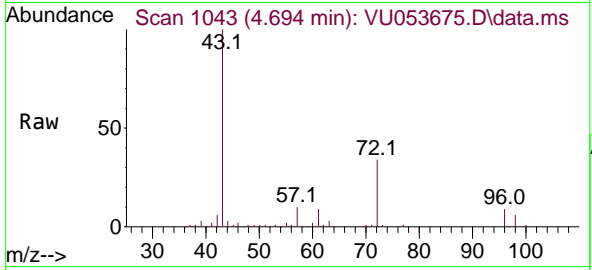




#22
 2-Butanone
 Concen: 99.175 ug/L
 RT: 4.694 min Scan# 1043
 Delta R.T. 0.000 min
 Lab File: VU053675.D
 Acq: 12 Apr 2023 20:29

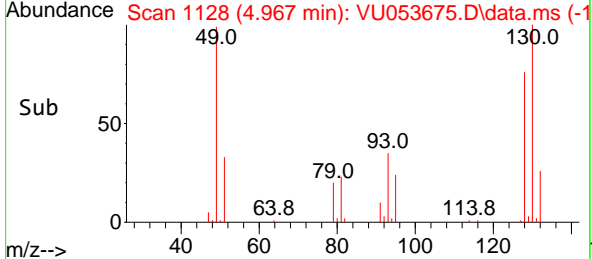
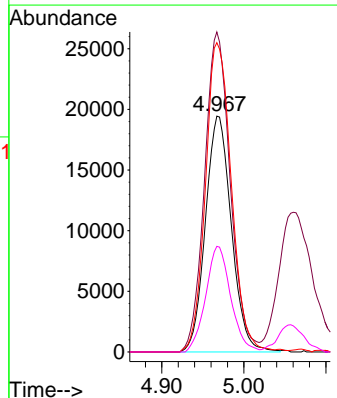
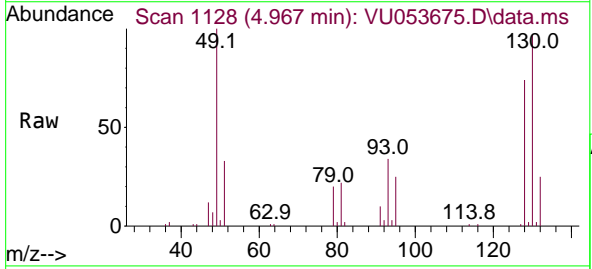
Instrument : MSVOA_U
 ClientSampleId : VSTD050196

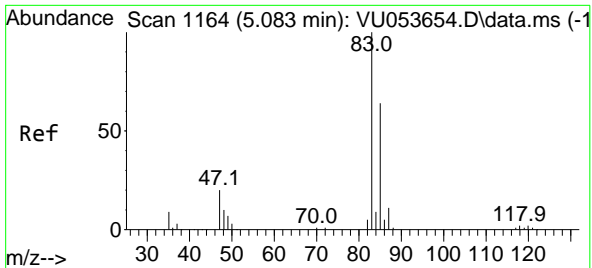
Tgt Ion: 43 Resp: 97498
 Ion Ratio Lower Upper
 43 100
 72 33.9 15.8 47.3



#23
 Bromochloromethane
 Concen: 42.085 ug/L
 RT: 4.967 min Scan# 1128
 Delta R.T. -0.003 min
 Lab File: VU053675.D
 Acq: 12 Apr 2023 20:29

Tgt Ion:128 Resp: 42766
 Ion Ratio Lower Upper
 128 100
 49 135.7 81.5 151.3
 130 131.2 91.8 170.4
 51 44.8 30.2 45.2

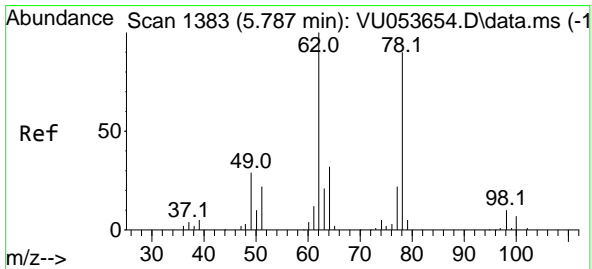
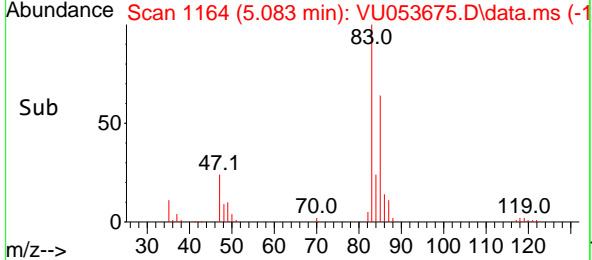
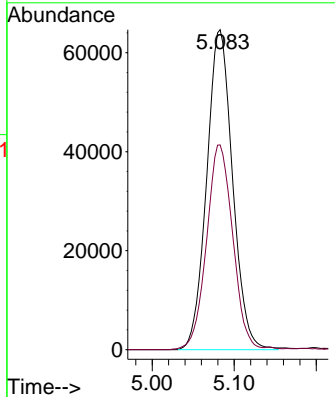
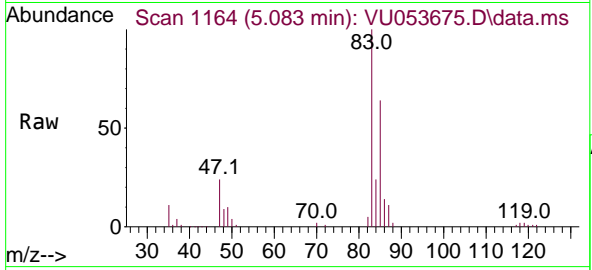




#25
 Chloroform
 Concen: 47.261 ug/L
 RT: 5.083 min Scan# 1164
 Delta R.T. 0.000 min
 Lab File: VU053675.D
 Acq: 12 Apr 2023 20:29

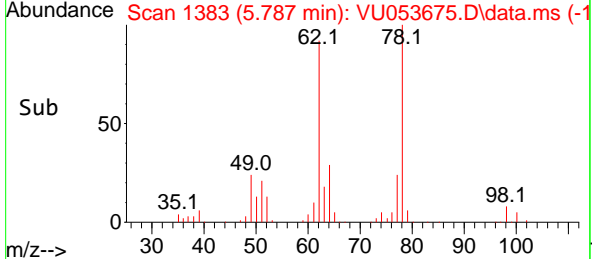
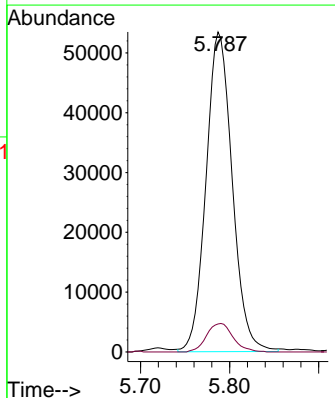
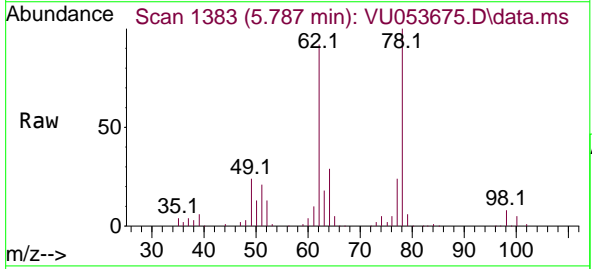
Instrument : MSVOA_U
 ClientSampleId : VSTD050196

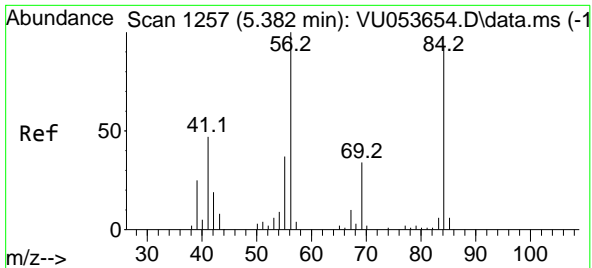
Tgt Ion: 83 Resp: 141824
 Ion Ratio Lower Upper
 83 100
 85 64.0 46.1 85.5



#27
 1,2-Dichloroethane
 Concen: 49.643 ug/L
 RT: 5.787 min Scan# 1383
 Delta R.T. 0.000 min
 Lab File: VU053675.D
 Acq: 12 Apr 2023 20:29

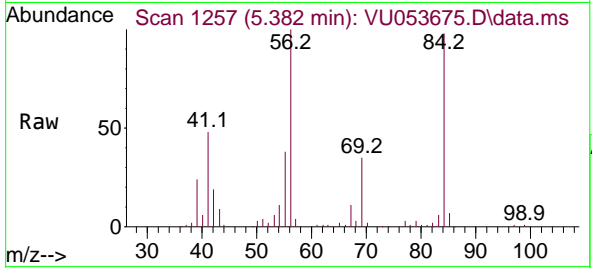
Tgt Ion: 62 Resp: 109097
 Ion Ratio Lower Upper
 62 100
 98 8.7 8.3 12.5



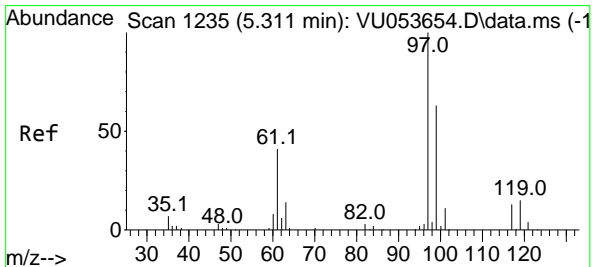
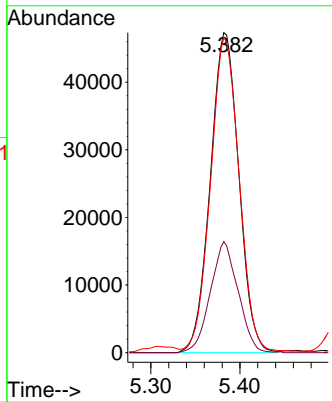
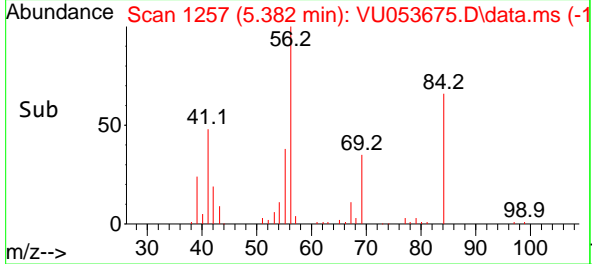


#29
 Cyclohexane
 Concen: 44.098 ug/L
 RT: 5.382 min Scan# 1257
 Delta R.T. 0.000 min
 Lab File: VU053675.D
 Acq: 12 Apr 2023 20:29

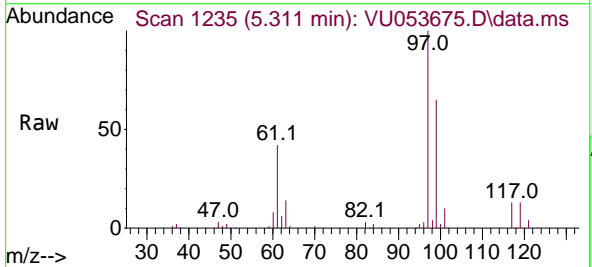
Instrument :
 MSVOA_U
 ClientSampleId :
 VSTD050196



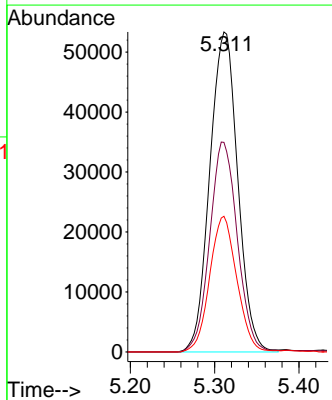
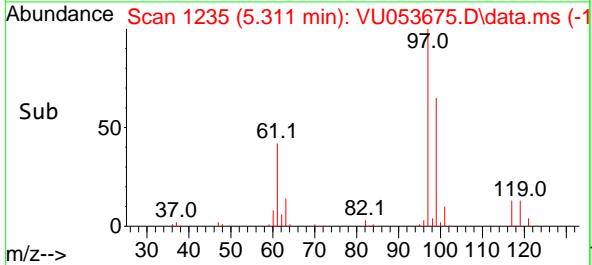
Tgt Ion: 56 Resp: 105341
 Ion Ratio Lower Upper
 56 100
 69 33.7 27.3 40.9
 84 99.1 81.3 121.9

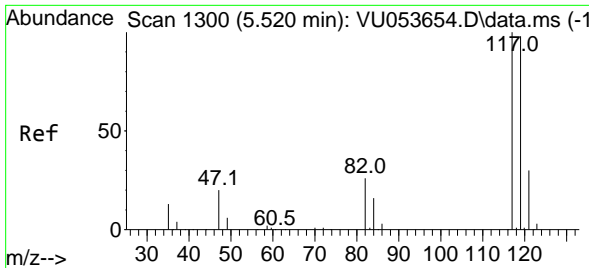


#30
 1,1,1-Trichloroethane
 Concen: 45.034 ug/L
 RT: 5.311 min Scan# 1235
 Delta R.T. 0.000 min
 Lab File: VU053675.D
 Acq: 12 Apr 2023 20:29



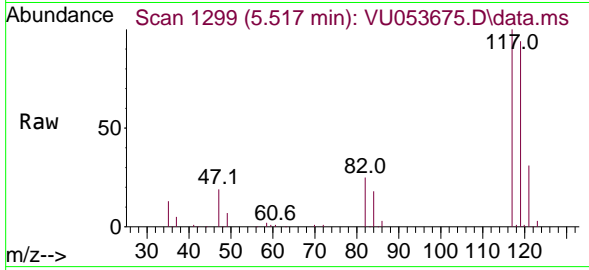
Tgt Ion: 97 Resp: 123131
 Ion Ratio Lower Upper
 97 100
 99 64.7 51.6 77.4
 61 41.1 31.0 46.4



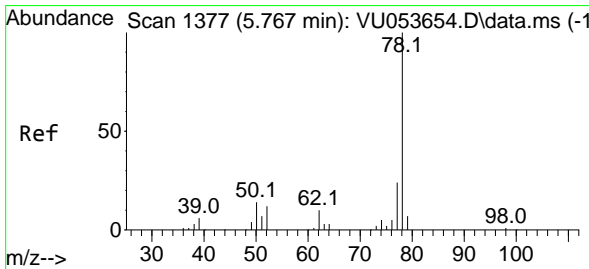
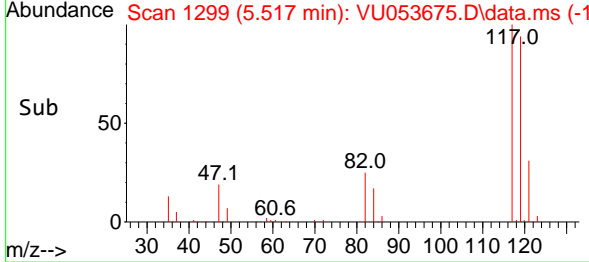
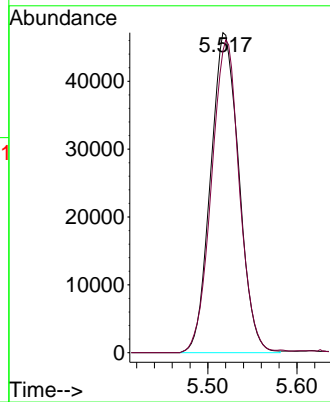


#31
 Carbon tetrachloride
 Concen: 42.515 ug/L
 RT: 5.517 min Scan# 1177
 Delta R.T. -0.003 min
 Lab File: VU053675.D
 Acq: 12 Apr 2023 20:29

Instrument : MSVOA_U
 ClientSampleId : VSTD050196

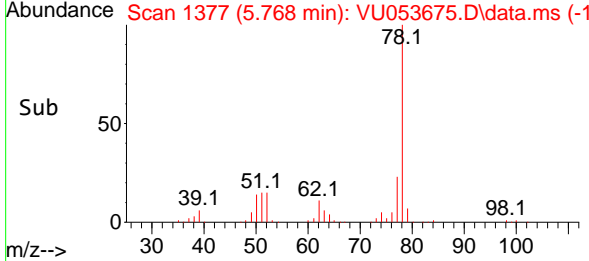
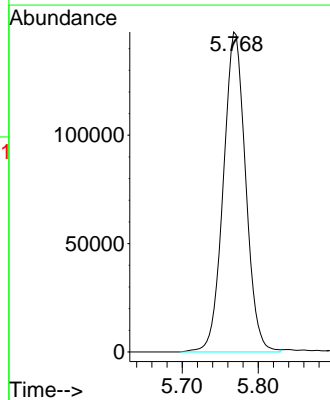
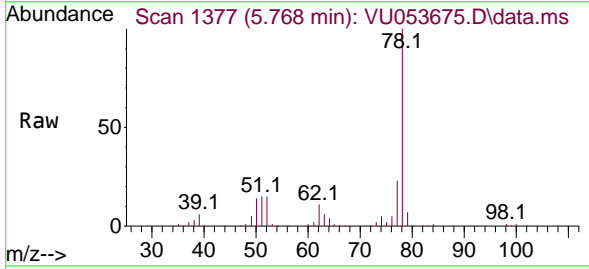


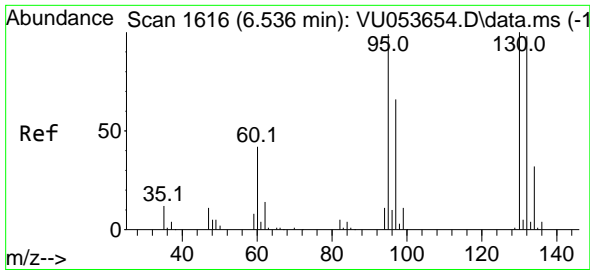
Tgt Ion:117 Resp: 104149
 Ion Ratio Lower Upper
 117 100
 119 96.3 76.9 115.3



#33
 Benzene
 Concen: 46.538 ug/L
 RT: 5.768 min Scan# 1377
 Delta R.T. 0.000 min
 Lab File: VU053675.D
 Acq: 12 Apr 2023 20:29

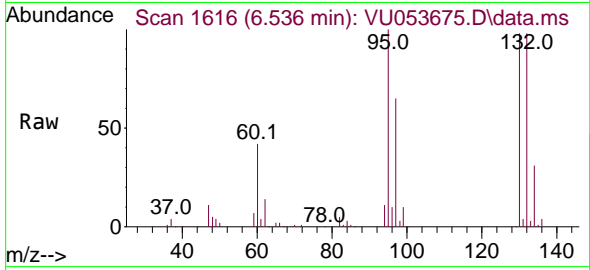
Tgt Ion: 78 Resp: 300873





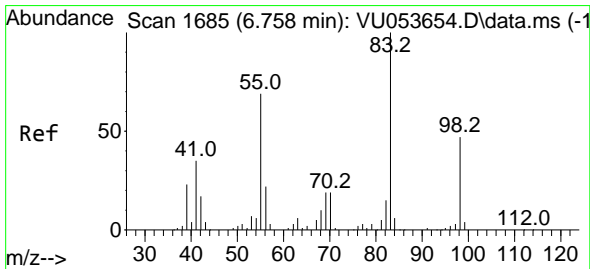
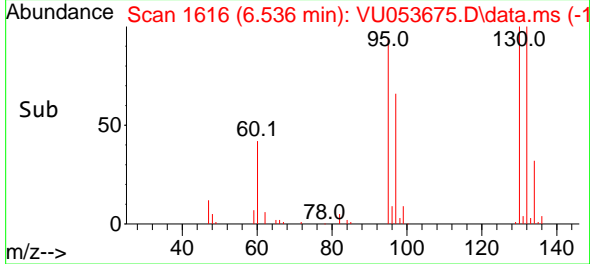
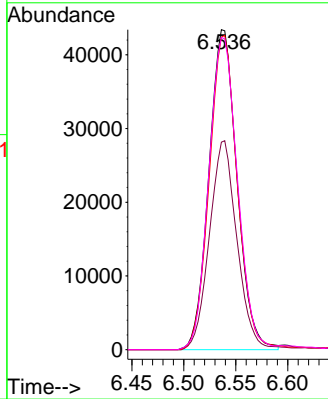
#34
 Trichloroethene
 Concen: 41.775 ug/L
 RT: 6.536 min Scan# 1616
 Delta R.T. 0.000 min
 Lab File: VU053675.D
 Acq: 12 Apr 2023 20:29

Instrument :
 MSVOA_U
 ClientSampleId :
 VSTD050196



Tgt Ion: 95 Resp: 81685

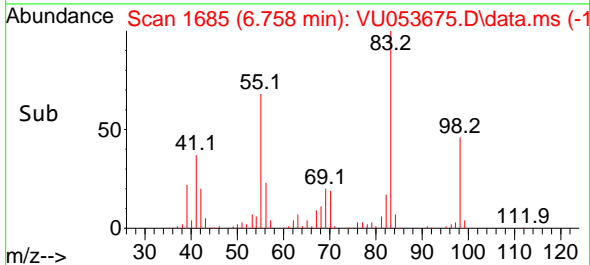
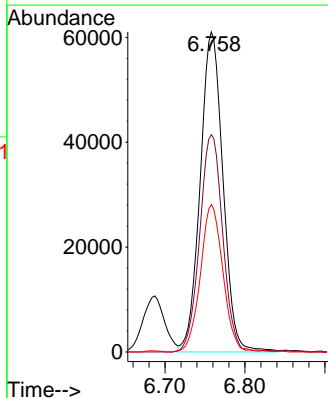
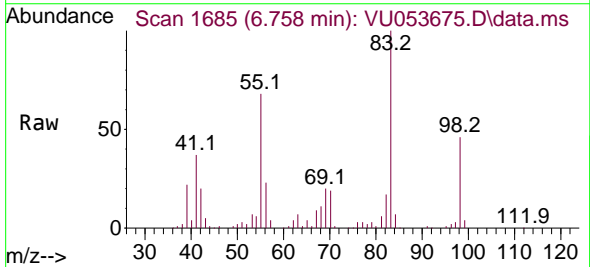
Ion	Ratio	Lower	Upper
95	100		
97	64.9	45.1	83.7
132	97.7	74.1	137.5
130	97.6	73.5	136.5

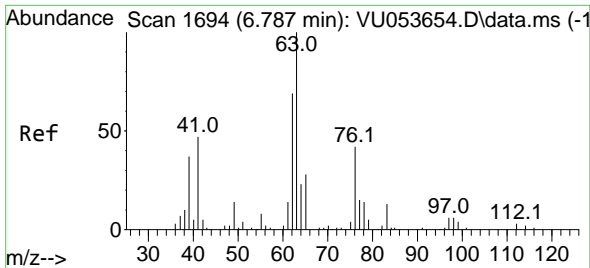


#35
 Methylcyclohexane
 Concen: 42.100 ug/L
 RT: 6.758 min Scan# 1685
 Delta R.T. 0.000 min
 Lab File: VU053675.D
 Acq: 12 Apr 2023 20:29

Tgt Ion: 83 Resp: 121007

Ion	Ratio	Lower	Upper
83	100		
55	68.1	53.0	79.6
98	45.4	39.0	58.6

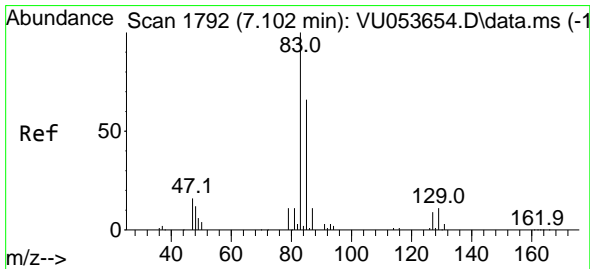
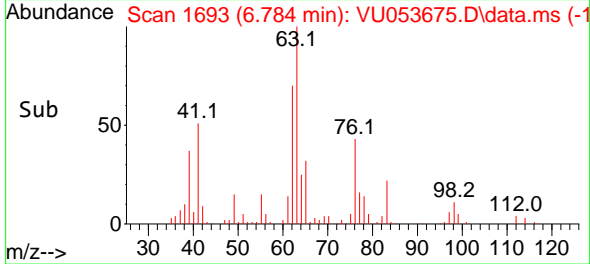
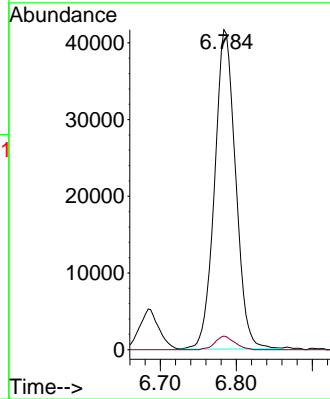
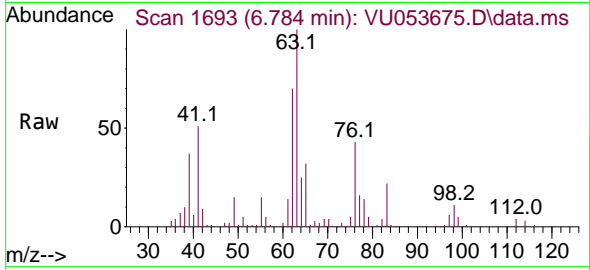




#37
 1,2-Dichloropropane
 Concen: 48.705 ug/L
 RT: 6.784 min Scan# 1693
 Delta R.T. -0.003 min
 Lab File: VU053675.D
 Acq: 12 Apr 2023 20:29

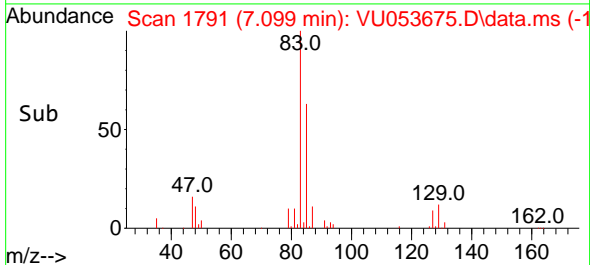
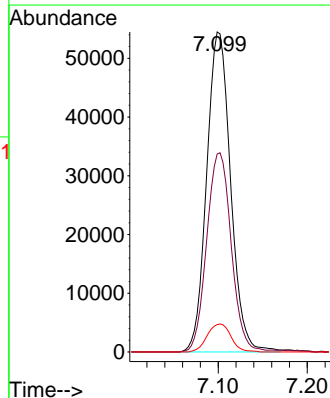
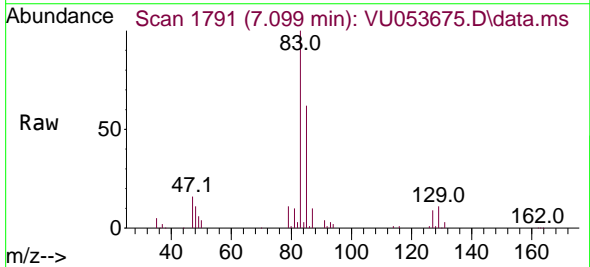
Instrument : MSVOA_U
 ClientSampleId : VSTD050196

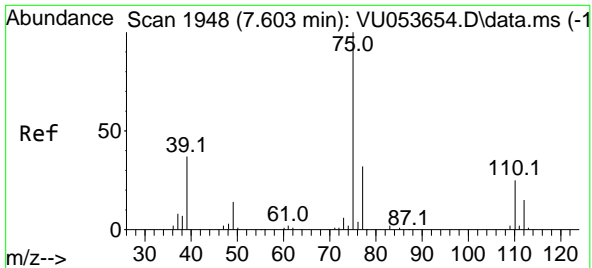
Tgt Ion: 63 Resp: 79954
 Ion Ratio Lower Upper
 63 100
 112 4.0 3.8 5.6



#38
 Bromodichloromethane
 Concen: 46.464 ug/L
 RT: 7.099 min Scan# 1791
 Delta R.T. -0.003 min
 Lab File: VU053675.D
 Acq: 12 Apr 2023 20:29

Tgt Ion: 83 Resp: 101753
 Ion Ratio Lower Upper
 83 100
 85 61.8 44.4 82.5
 127 8.6 8.0 12.0

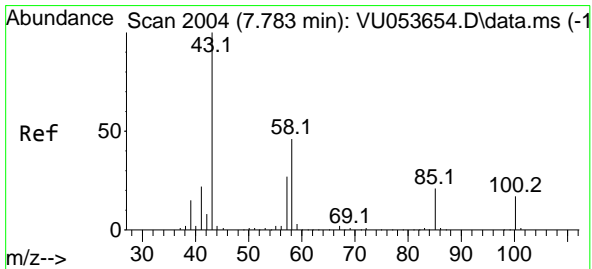
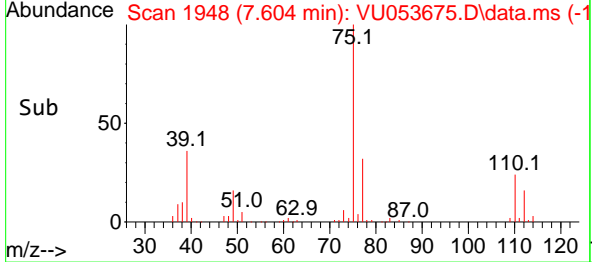
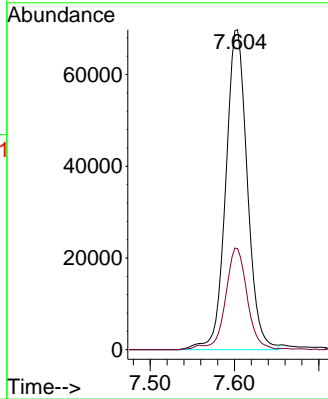
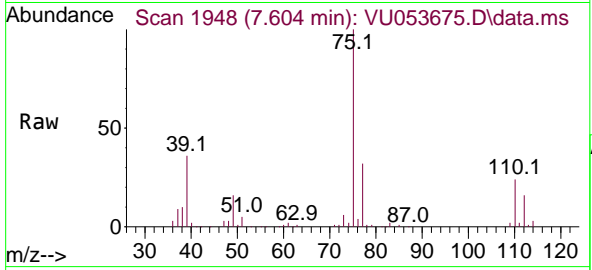




#39
 cis-1,3-Dichloropropene
 Concen: 46.193 ug/L
 RT: 7.604 min Scan# 1948
 Delta R.T. 0.000 min
 Lab File: VU053675.D
 Acq: 12 Apr 2023 20:29

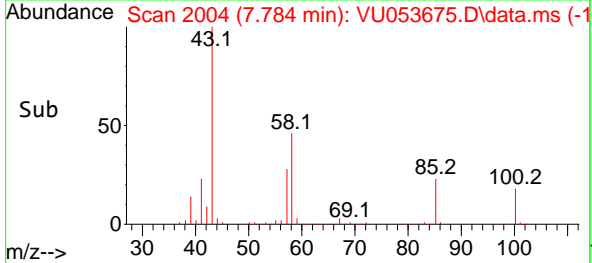
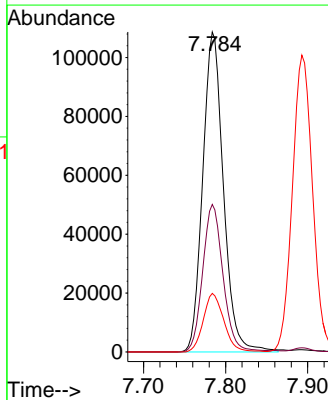
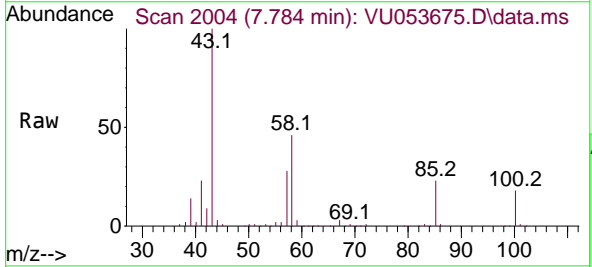
Instrument : MSVOA_U
 ClientSampleId : VSTD050196

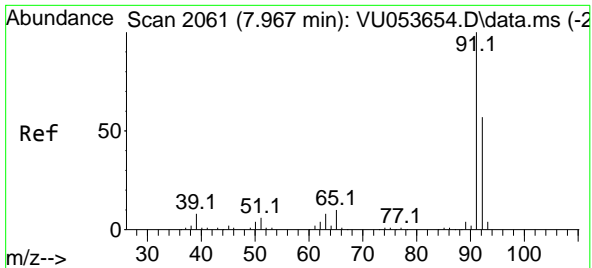
Tgt Ion: 75 Resp: 123917
 Ion Ratio Lower Upper
 75 100
 77 31.6 22.5 41.7



#40
 4-Methyl-2-pentanone
 Concen: 106.704 ug/L
 RT: 7.784 min Scan# 2004
 Delta R.T. 0.000 min
 Lab File: VU053675.D
 Acq: 12 Apr 2023 20:29

Tgt Ion: 43 Resp: 190349
 Ion Ratio Lower Upper
 43 100
 58 45.4 35.5 53.3
 100 18.1 15.8 23.8

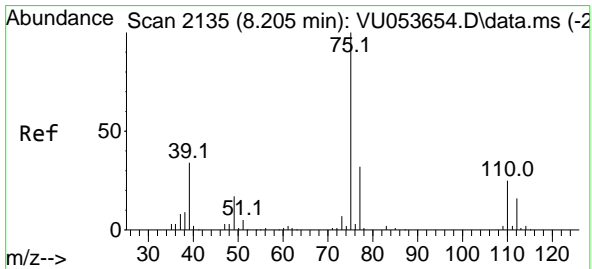
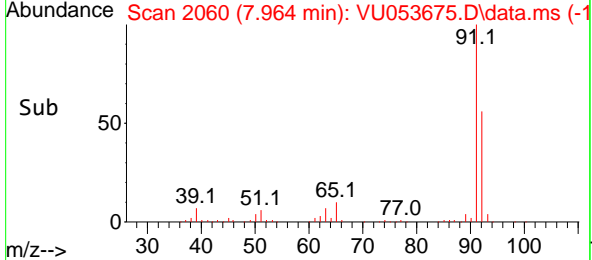
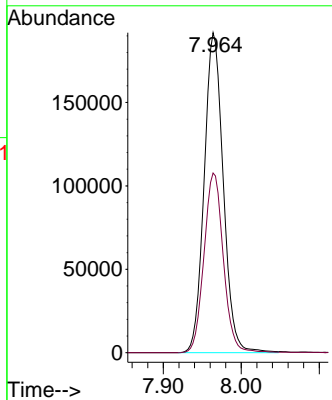
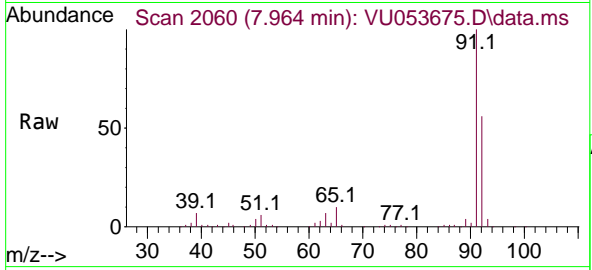




#42
 Toluene
 Concen: 44.709 ug/L
 RT: 7.964 min Scan# 2060
 Delta R.T. -0.003 min
 Lab File: VU053675.D
 Acq: 12 Apr 2023 20:29

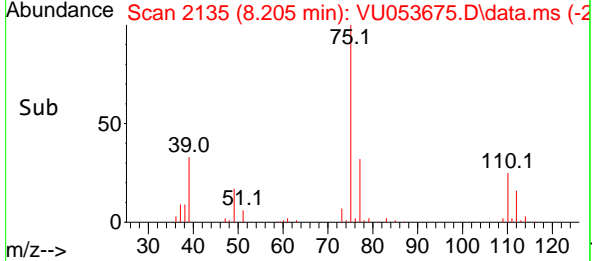
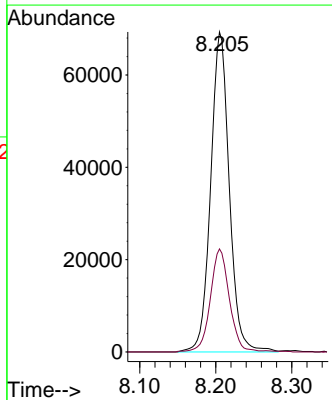
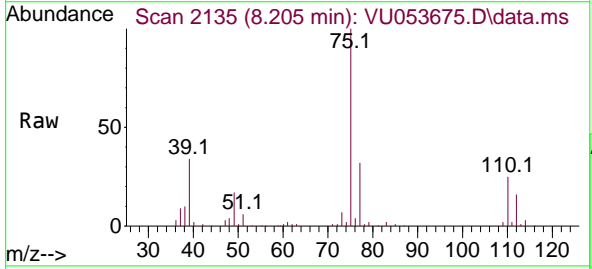
Instrument : MSVOA_U
 ClientSampleId : VSTD050196

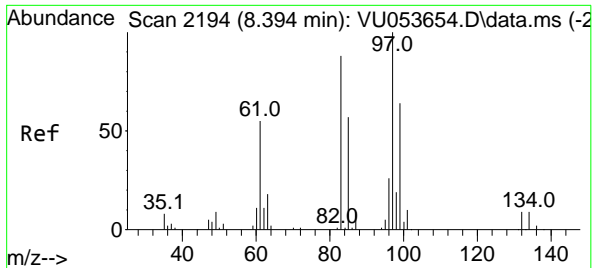
Tgt Ion: 91 Resp: 327562
 Ion Ratio Lower Upper
 91 100
 92 56.2 39.8 73.8



#44
 trans-1,3-Dichloropropene
 Concen: 46.455 ug/L
 RT: 8.205 min Scan# 2135
 Delta R.T. 0.000 min
 Lab File: VU053675.D
 Acq: 12 Apr 2023 20:29

Tgt Ion: 75 Resp: 117808
 Ion Ratio Lower Upper
 75 100
 77 32.2 21.8 40.4

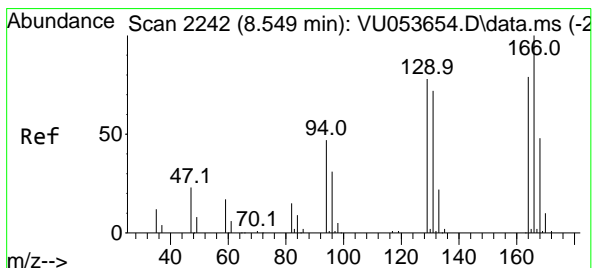
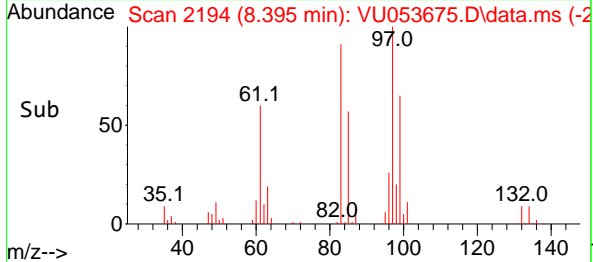
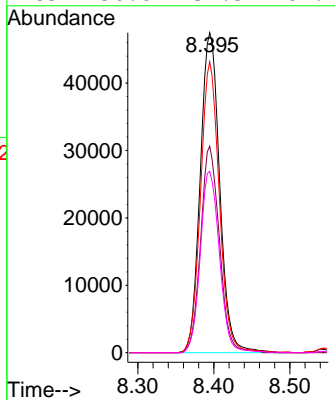
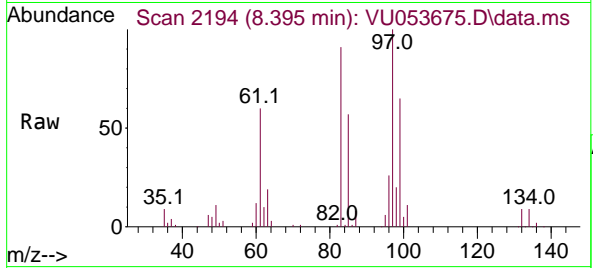




#45
 1,1,2-Trichloroethane
 Concen: 46.664 ug/L
 RT: 8.395 min Scan# 2194
 Delta R.T. 0.000 min
 Lab File: VU053675.D
 Acq: 12 Apr 2023 20:29

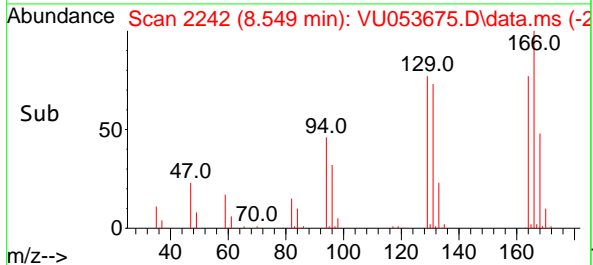
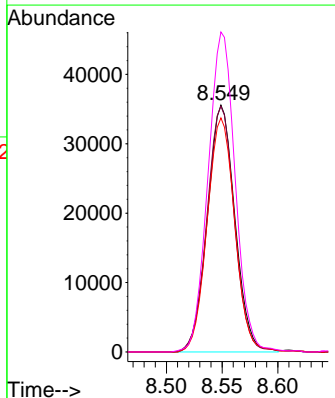
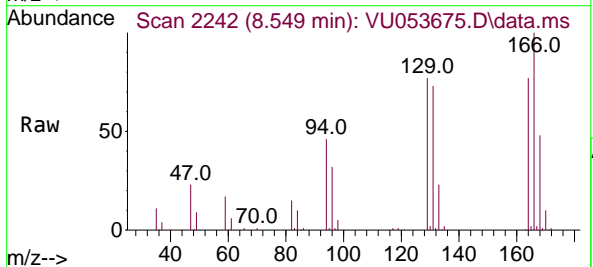
Instrument : MSVOA_U
 ClientSampleId : VSTD050196

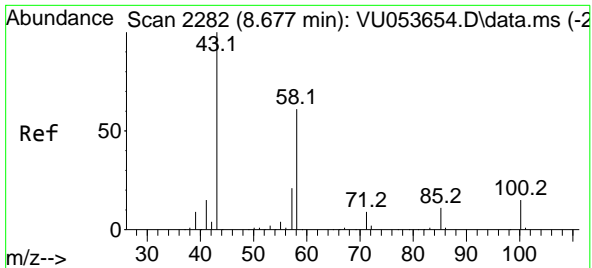
Tgt Ion	Resp	Lower	Upper
97	84105		
97	100		
99	64.5	43.8	81.3
83	90.9	59.0	109.6
85	56.6	37.5	69.7



#46
 Tetrachloroethene
 Concen: 37.686 ug/L
 RT: 8.549 min Scan# 2242
 Delta R.T. 0.000 min
 Lab File: VU053675.D
 Acq: 12 Apr 2023 20:29

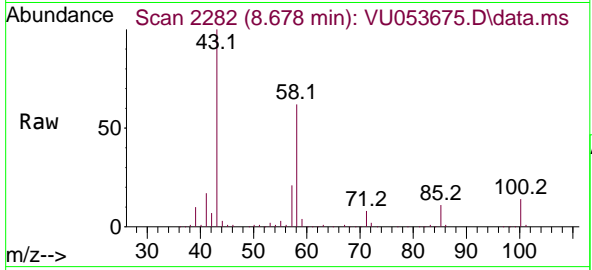
Tgt Ion	Resp	Lower	Upper
164	61151		
164	100		
129	99.5	64.0	119.0
131	94.8	61.9	115.1
166	129.6	90.6	168.2





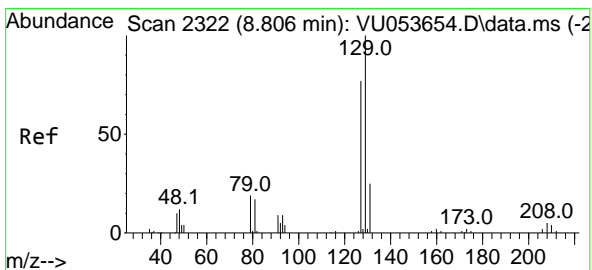
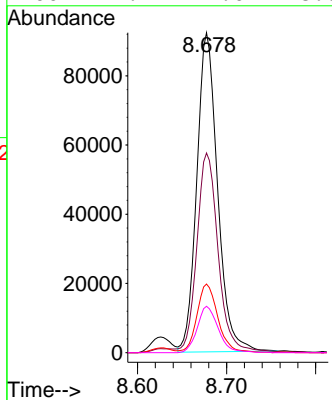
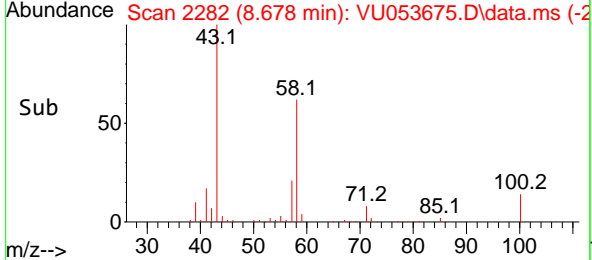
#48
 2-Hexanone
 Concen: 103.814 ug/L
 RT: 8.678 min Scan# 2111
 Delta R.T. 0.000 min
 Lab File: VU053675.D
 Acq: 12 Apr 2023 20:29

Instrument : MSVOA_U
 ClientSampleId : VSTD050196

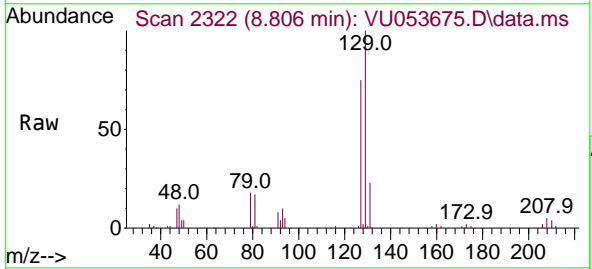


Tgt Ion: 43 Resp: 149806

Ion	Ratio	Lower	Upper
43	100		
58	64.4	49.8	74.6
57	21.8	17.8	26.6
100	14.7	12.0	18.0

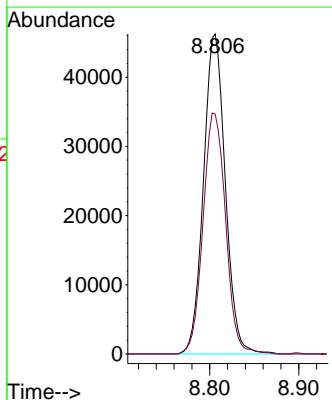
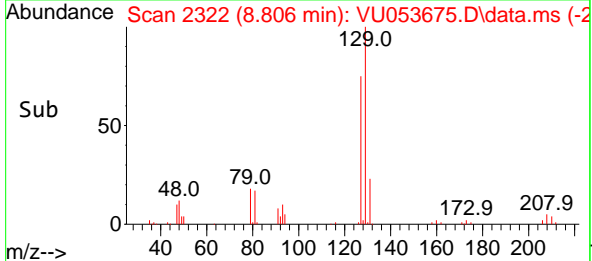


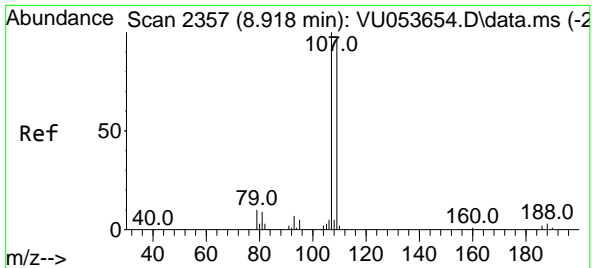
#49
 Dibromochloromethane
 Concen: 41.940 ug/L
 RT: 8.806 min Scan# 2322
 Delta R.T. 0.000 min
 Lab File: VU053675.D
 Acq: 12 Apr 2023 20:29



Tgt Ion: 129 Resp: 78598

Ion	Ratio	Lower	Upper
129	100		
127	75.0	53.5	99.3

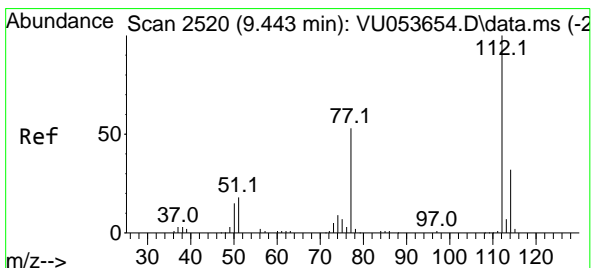
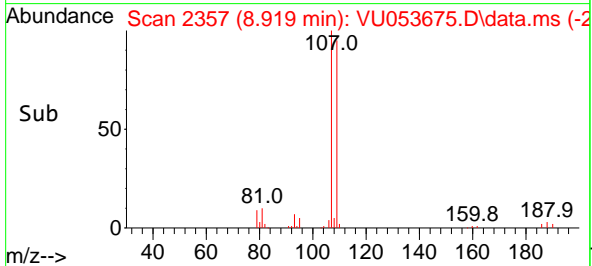
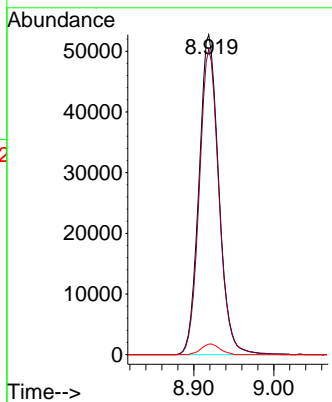
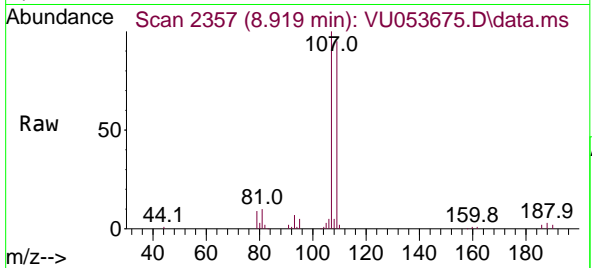




#50
 1,2-Dibromoethane
 Concen: 45.112 ug/L
 RT: 8.919 min Scan# 21
 Delta R.T. 0.000 min
 Lab File: VU053675.D
 Acq: 12 Apr 2023 20:29

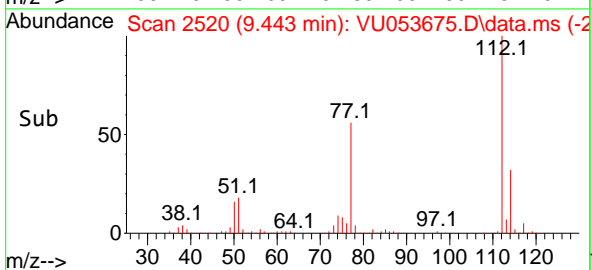
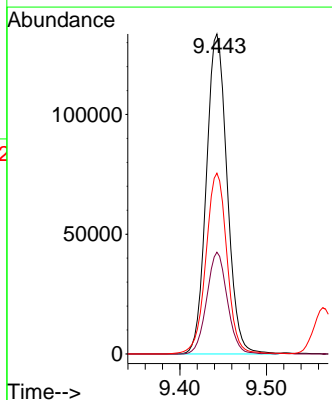
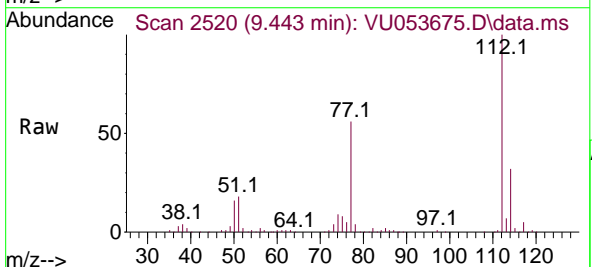
Instrument :
 MSVOA_U
 ClientSampleId :
 VSTD050196

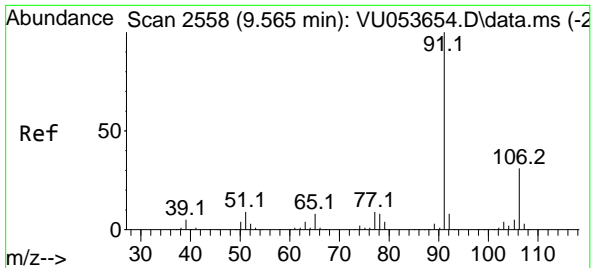
Tgt Ion:107 Resp: 90966
 Ion Ratio Lower Upper
 107 100
 109 95.5 66.3 123.1
 188 3.3 3.0 4.4



#51
 Chlorobenzene
 Concen: 44.149 ug/L
 RT: 9.443 min Scan# 2520
 Delta R.T. 0.000 min
 Lab File: VU053675.D
 Acq: 12 Apr 2023 20:29

Tgt Ion:112 Resp: 222862
 Ion Ratio Lower Upper
 112 100
 114 31.8 22.2 41.2
 77 56.5 41.3 61.9

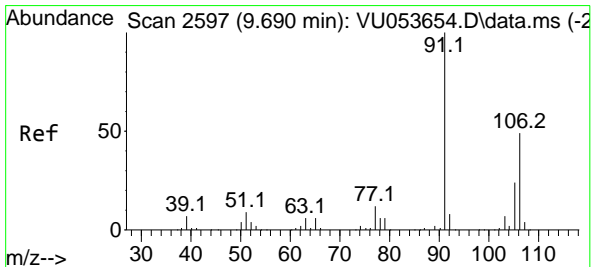
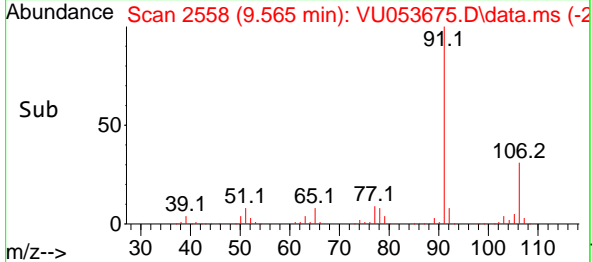
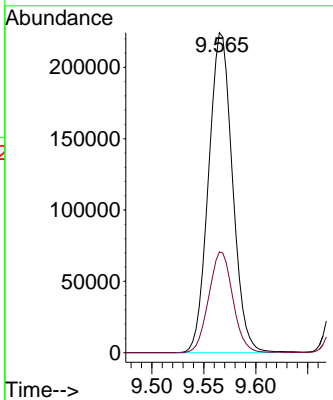
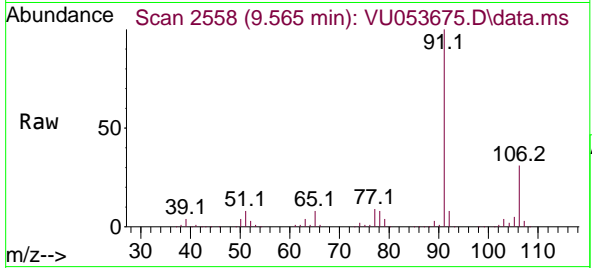




#52
 Ethylbenzene
 Concen: 44.066 ug/L
 RT: 9.565 min Scan# 2558
 Delta R.T. 0.000 min
 Lab File: VU053675.D
 Acq: 12 Apr 2023 20:29

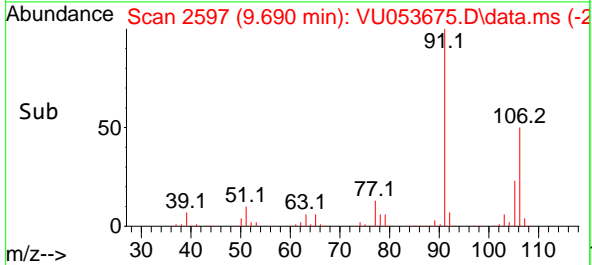
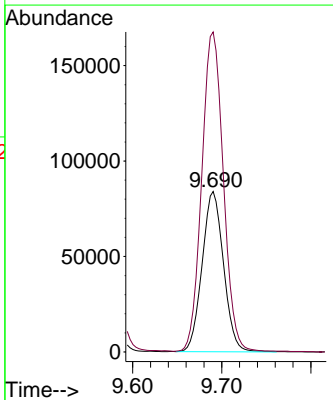
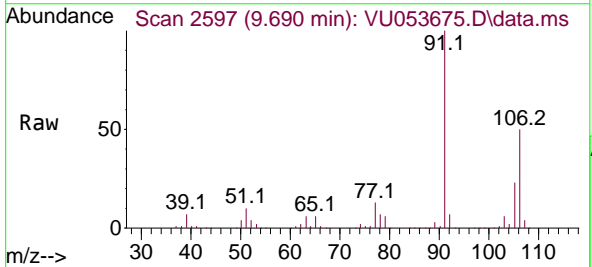
Instrument : MSVOA_U
 ClientSampleId : VSTD050196

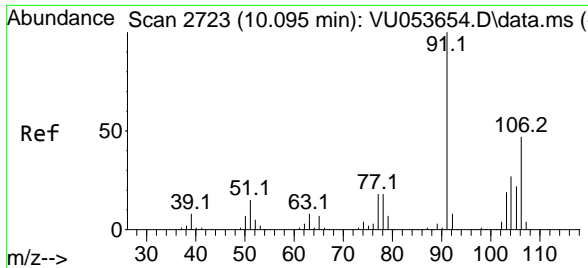
Tgt Ion: 91 Resp: 359399
 Ion Ratio Lower Upper
 91 100
 106 31.5 22.4 41.6



#53
 m,p-Xylene
 Concen: 43.870 ug/L
 RT: 9.690 min Scan# 2597
 Delta R.T. 0.000 min
 Lab File: VU053675.D
 Acq: 12 Apr 2023 20:29

Tgt Ion: 106 Resp: 139933
 Ion Ratio Lower Upper
 106 100
 91 199.4 140.0 260.0

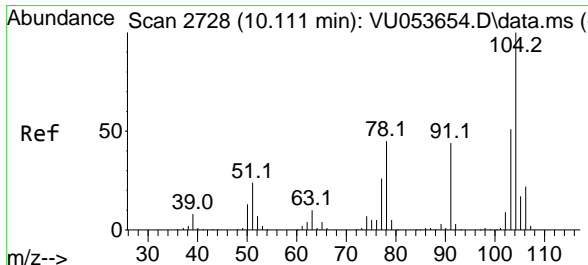
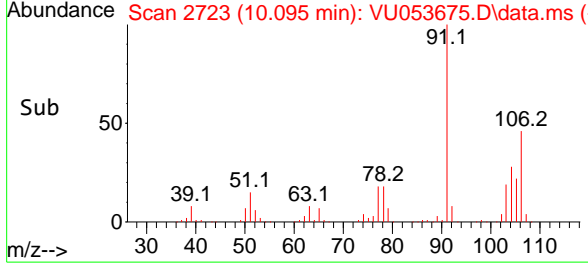
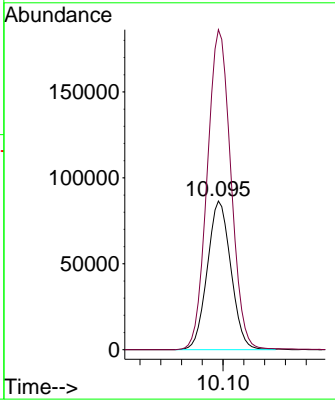
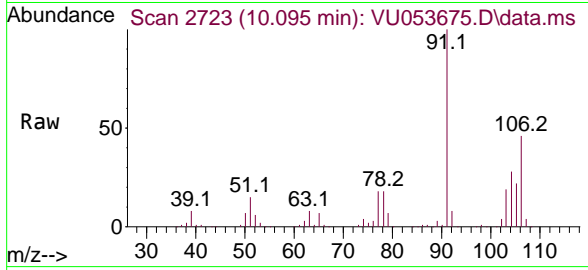




#54
 o-Xylene
 Concen: 43.300 ug/L
 RT: 10.095 min Scan# 2723
 Delta R.T. 0.000 min
 Lab File: VU053675.D
 Acq: 12 Apr 2023 20:29

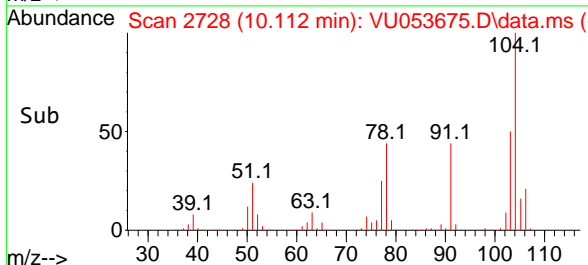
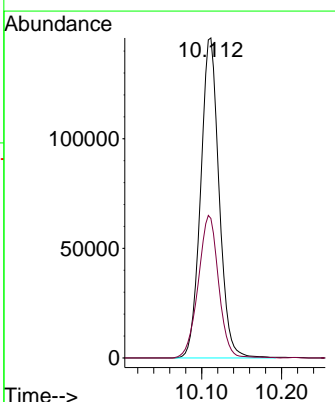
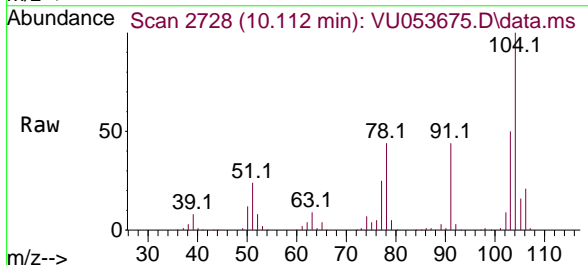
Instrument : MSVOA_U
 ClientSampleId : VSTD050196

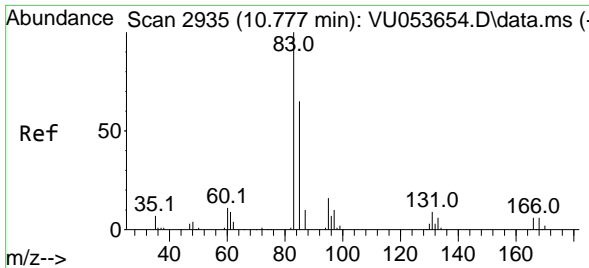
Tgt Ion:106 Resp: 136556
 Ion Ratio Lower Upper
 106 100
 91 215.3 144.9 269.1



#55
 Styrene
 Concen: 45.510 ug/L
 RT: 10.112 min Scan# 2728
 Delta R.T. 0.000 min
 Lab File: VU053675.D
 Acq: 12 Apr 2023 20:29

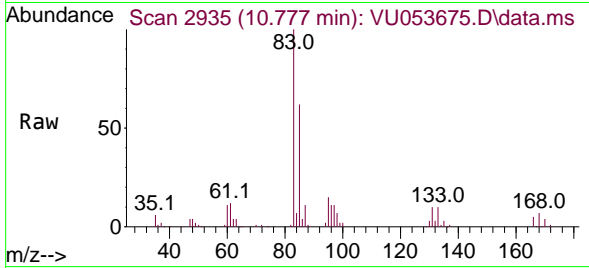
Tgt Ion:104 Resp: 233772
 Ion Ratio Lower Upper
 104 100
 78 43.6 31.3 58.1



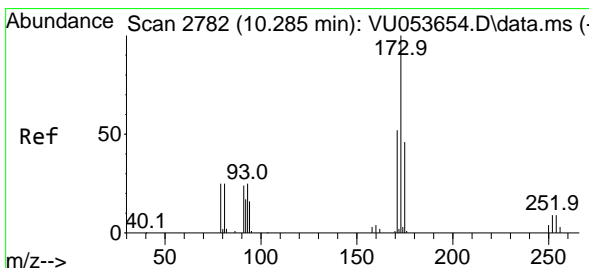
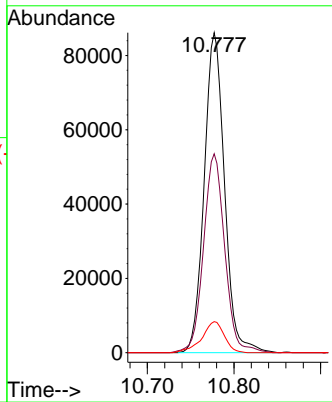
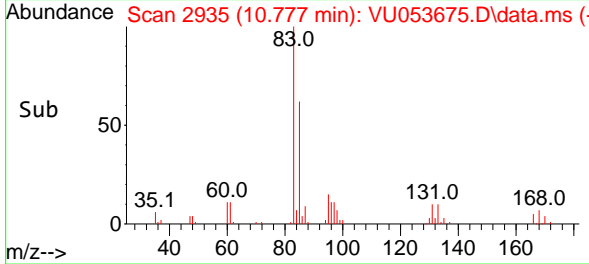


#57
 1,1,2-Tetrachloroethane
 Concen: 53.074 ug/L
 RT: 10.777 min Scan# 2935
 Delta R.T. 0.000 min
 Lab File: VU053675.D
 Acq: 12 Apr 2023 20:29

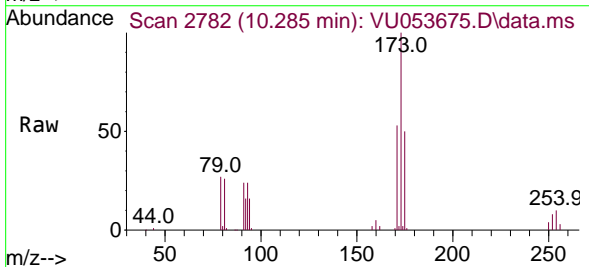
Instrument :
 MSVOA_U
 ClientSampleId :
 VSTD050196



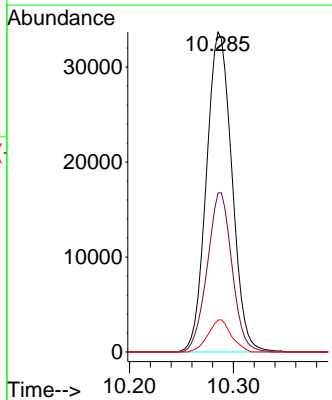
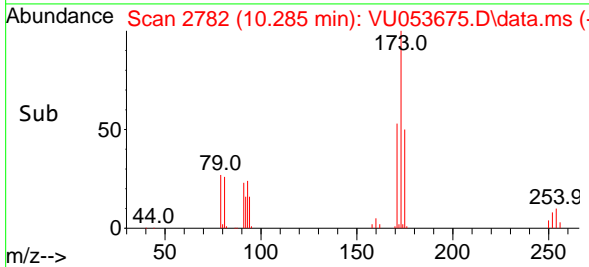
Tgt Ion: 83 Resp: 140446
 Ion Ratio Lower Upper
 83 100
 85 62.1 47.0 87.4
 131 9.7 8.7 13.1

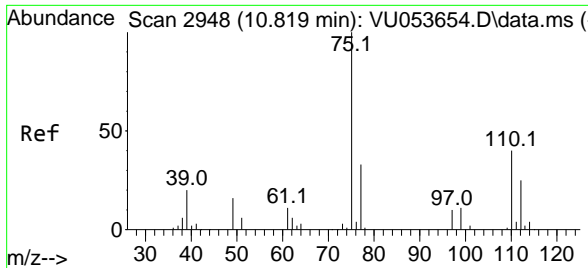


#59
 Bromoform
 Concen: 40.903 ug/L
 RT: 10.285 min Scan# 2782
 Delta R.T. 0.000 min
 Lab File: VU053675.D
 Acq: 12 Apr 2023 20:29



Tgt Ion:173 Resp: 57349
 Ion Ratio Lower Upper
 173 100
 175 48.4 39.0 58.6
 254 9.2 7.0 10.4



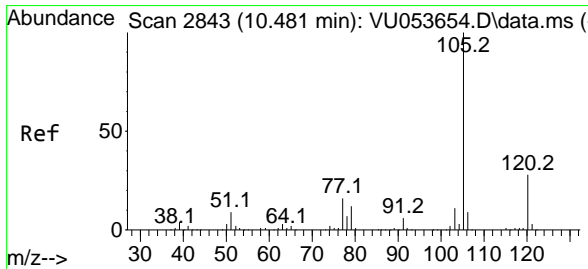
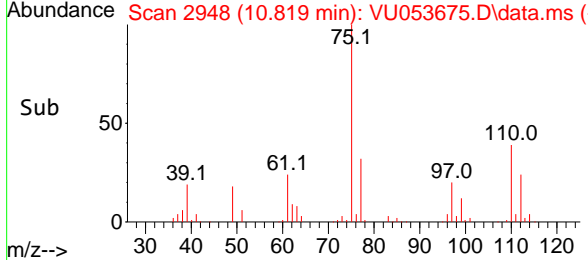
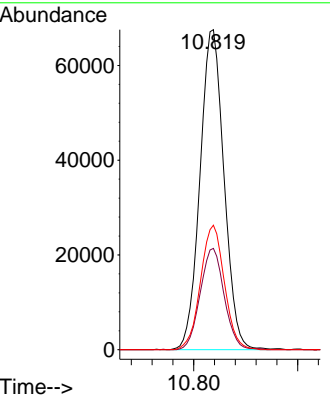
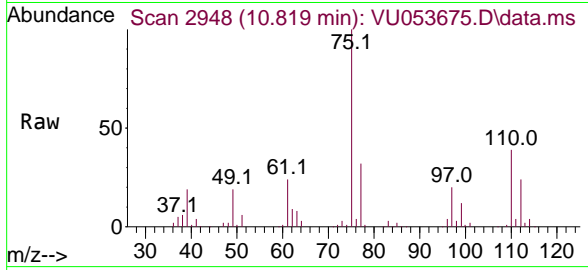


#60
 1,2,3-Trichloropropane
 Concen: 54.506 ug/L
 RT: 10.819 min Scan# 2948
 Delta R.T. 0.000 min
 Lab File: VU053675.D
 Acq: 12 Apr 2023 20:29

Instrument : MSVOA_U
 ClientSampleId : VSTD050196

Tgt Ion: 75 Resp: 108258

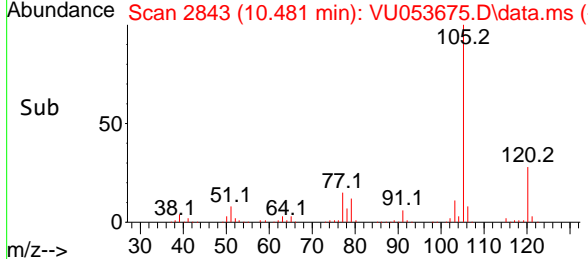
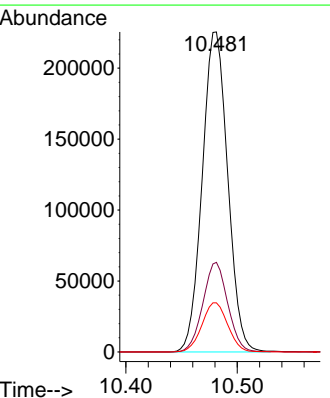
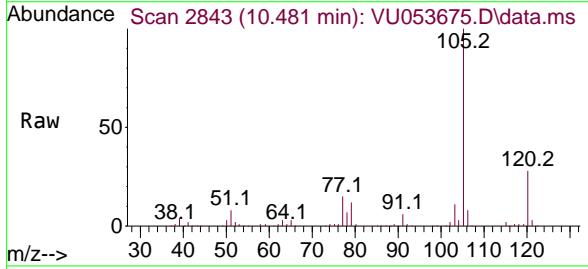
Ion	Ratio	Lower	Upper
75	100		
77	31.5	26.0	39.0
110	38.7	32.6	48.8

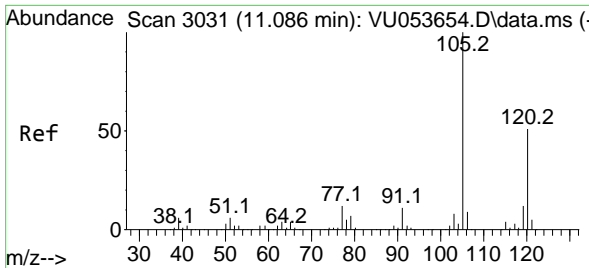


#61
 Isopropylbenzene
 Concen: 44.199 ug/L
 RT: 10.481 min Scan# 2843
 Delta R.T. 0.000 min
 Lab File: VU053675.D
 Acq: 12 Apr 2023 20:29

Tgt Ion: 105 Resp: 357951

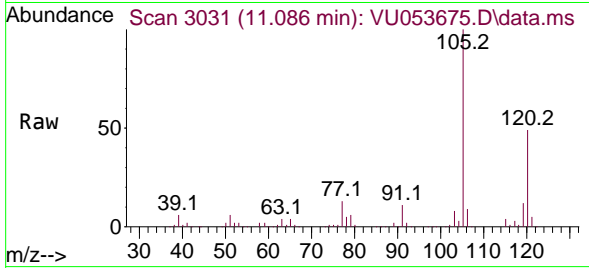
Ion	Ratio	Lower	Upper
105	100		
120	27.4	22.4	33.6
77	15.7	12.1	18.1



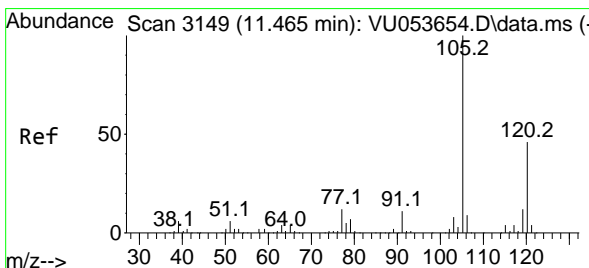
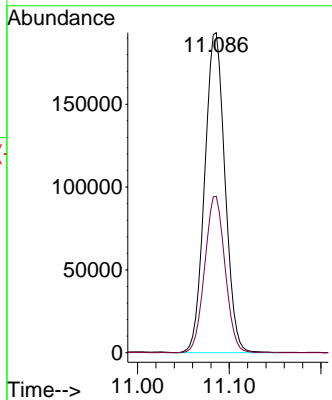
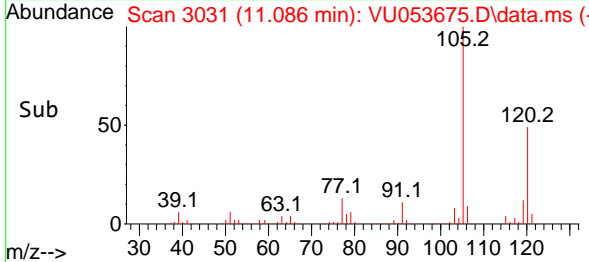


#62
 1,3,5-Trimethylbenzene
 Concen: 44.115 ug/L
 RT: 11.086 min Scan# 3031
 Delta R.T. 0.000 min
 Lab File: VU053675.D
 Acq: 12 Apr 2023 20:29

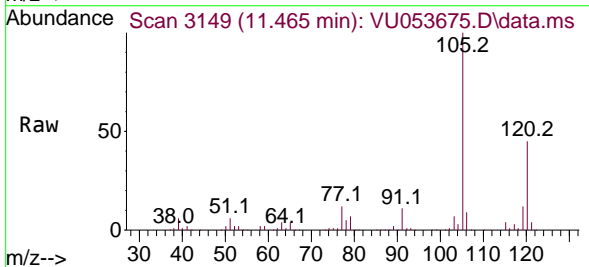
Instrument : MSVOA_U
 ClientSampleId : VSTD050196



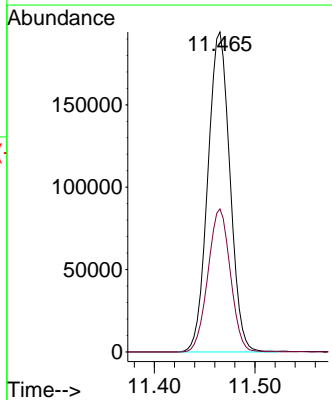
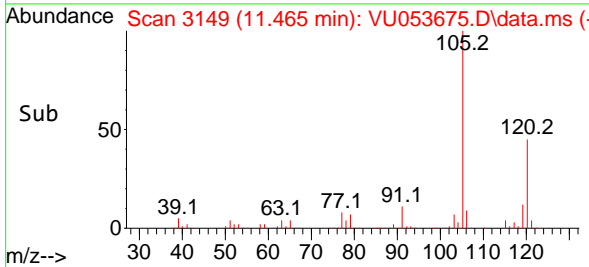
Tgt Ion:105 Resp: 296999
 Ion Ratio Lower Upper
 105 100
 120 49.0 39.5 59.3

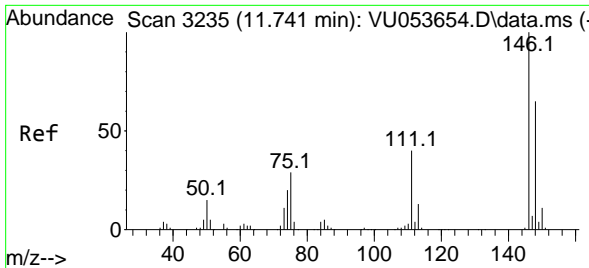


#63
 1,2,4-Trimethylbenzene
 Concen: 44.524 ug/L
 RT: 11.465 min Scan# 3149
 Delta R.T. 0.000 min
 Lab File: VU053675.D
 Acq: 12 Apr 2023 20:29



Tgt Ion:105 Resp: 296882
 Ion Ratio Lower Upper
 105 100
 120 45.3 37.5 56.3



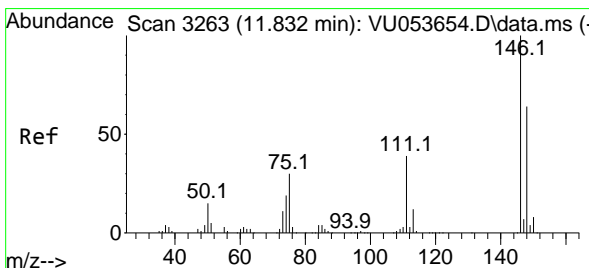
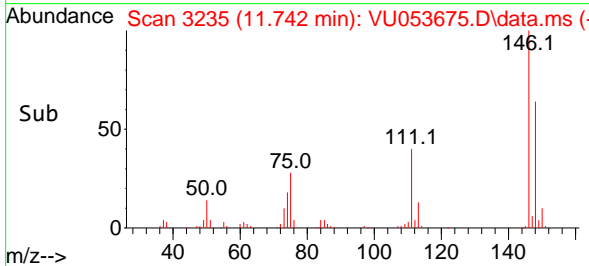
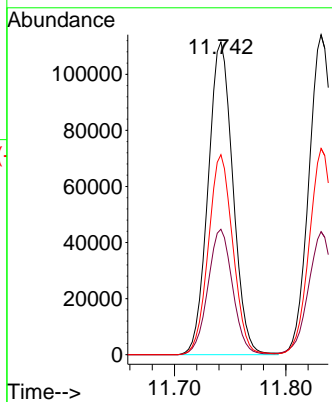
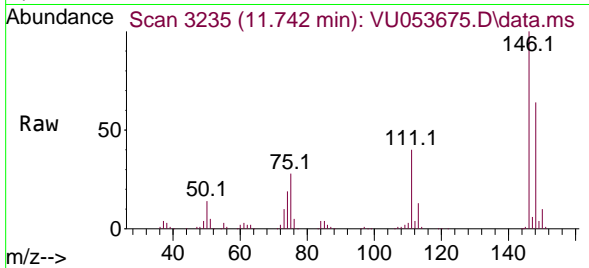


#64
 1,3-Dichlorobenzene
 Concen: 40.822 ug/L
 RT: 11.742 min Scan# 31
 Delta R.T. 0.000 min
 Lab File: VU053675.D
 Acq: 12 Apr 2023 20:29

Instrument :
 MSVOA_U
 ClientSampleId :
 VSTD050196

Tgt Ion:146 Resp: 172748

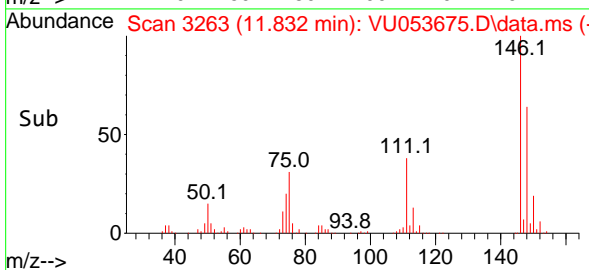
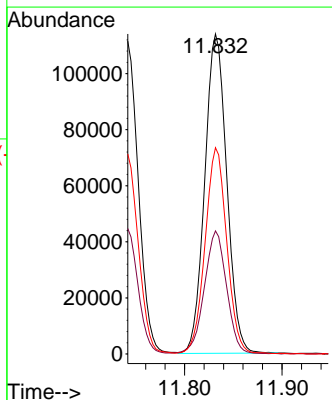
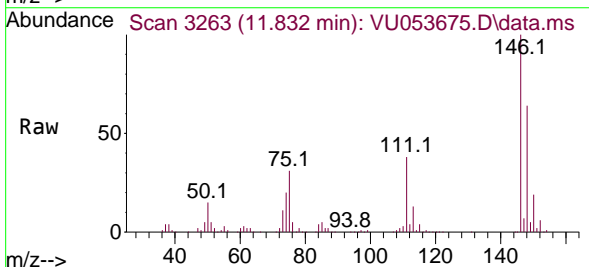
Ion	Ratio	Lower	Upper
146	100		
111	40.1	25.7	47.7
148	63.9	44.2	82.2

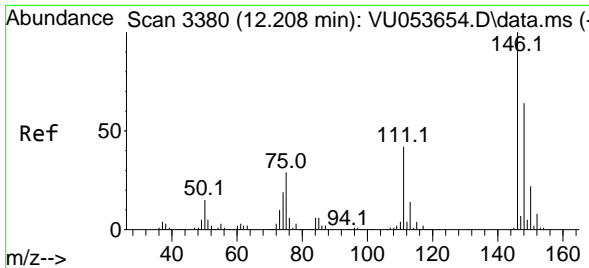


#65
 1,4-Dichlorobenzene
 Concen: 41.486 ug/L
 RT: 11.832 min Scan# 3263
 Delta R.T. 0.000 min
 Lab File: VU053675.D
 Acq: 12 Apr 2023 20:29

Tgt Ion:146 Resp: 178926

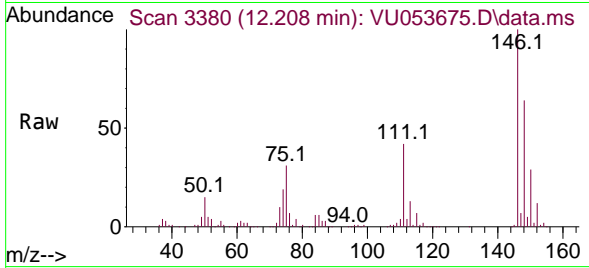
Ion	Ratio	Lower	Upper
146	100		
111	38.5	25.1	46.5
148	64.5	44.3	82.3



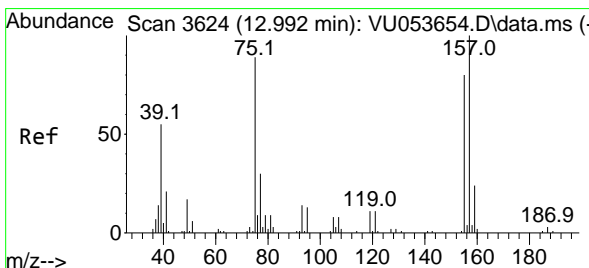
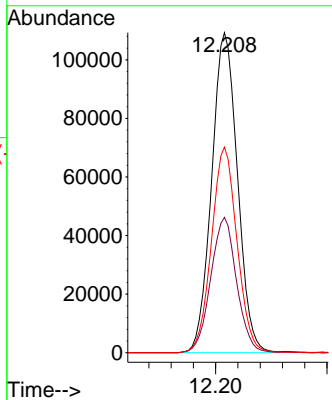
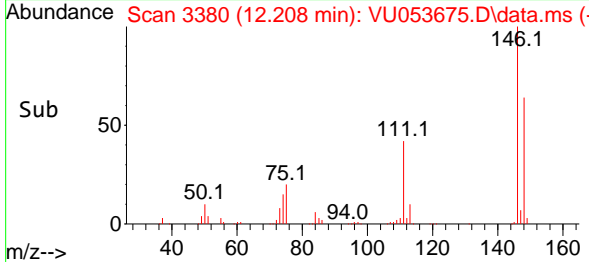


#67
 1,2-Dichlorobenzene
 Concen: 41.666 ug/L
 RT: 12.208 min Scan# 311
 Delta R.T. 0.000 min
 Lab File: VU053675.D
 Acq: 12 Apr 2023 20:29

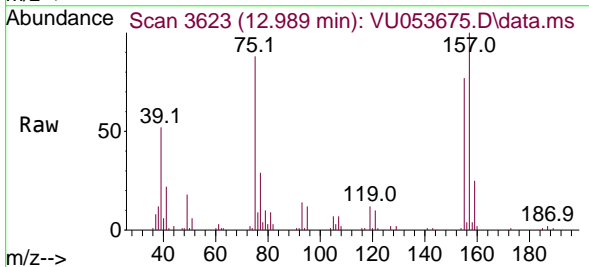
Instrument : MSVOA_U
 ClientSampleId : VSTD050196



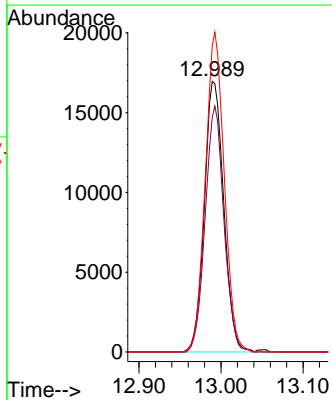
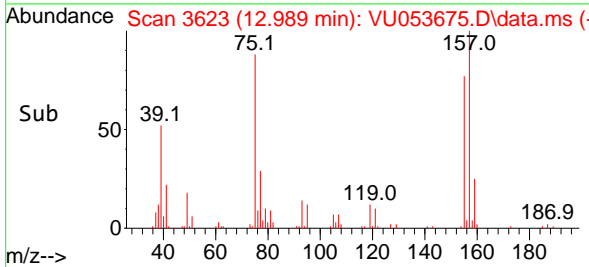
Tgt Ion:146 Resp: 175731
 Ion Ratio Lower Upper
 146 100
 111 42.3 31.5 47.3
 148 64.3 51.6 77.4

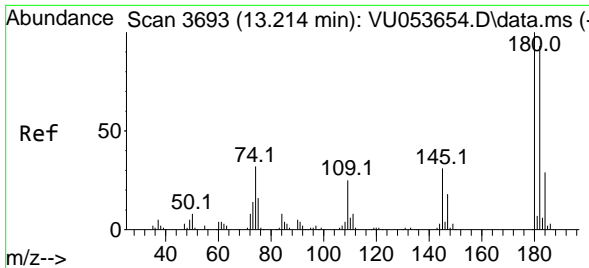


#68
 1,2-Dibromo-3-chloropropane
 Concen: 52.683 ug/L
 RT: 12.989 min Scan# 3623
 Delta R.T. -0.003 min
 Lab File: VU053675.D
 Acq: 12 Apr 2023 20:29



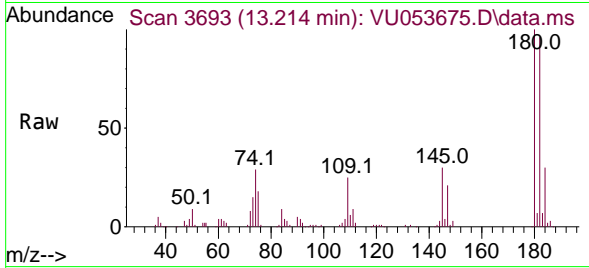
Tgt Ion: 75 Resp: 27895
 Ion Ratio Lower Upper
 75 100
 155 86.7 79.9 119.9
 157 113.2 100.8 151.2



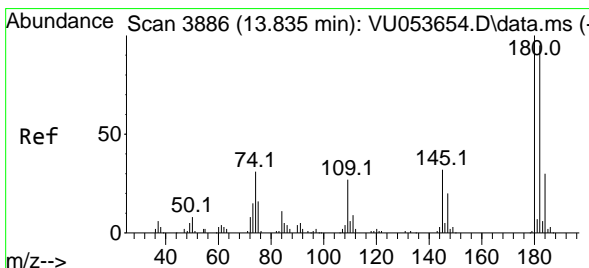
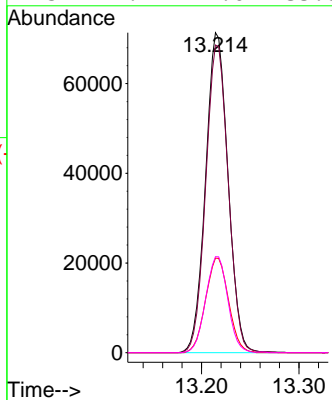
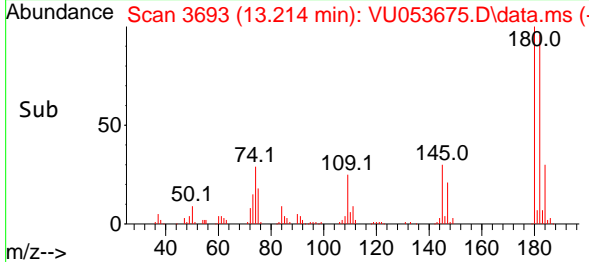


#69
 1,3,5-Trichlorobenzene
 Concen: 36.403 ug/L
 RT: 13.214 min Scan# 3693
 Delta R.T. 0.000 min
 Lab File: VU053675.D
 Acq: 12 Apr 2023 20:29

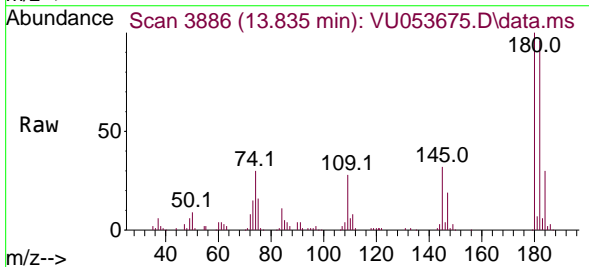
Instrument : MSVOA_U
 ClientSampleId : VSTD050196



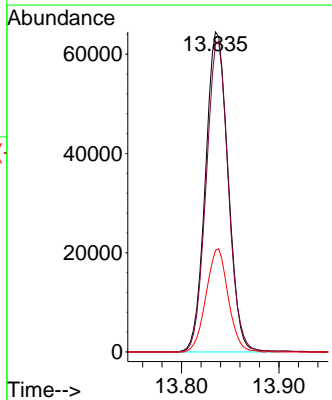
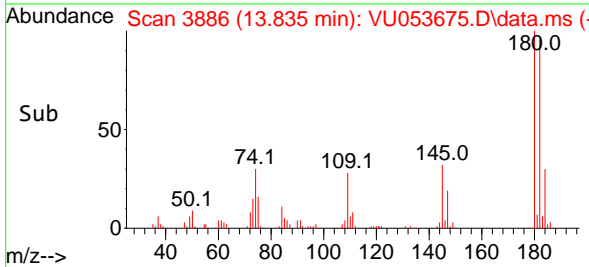
Tgt Ion:180 Resp: 114076
 Ion Ratio Lower Upper
 180 100
 182 96.2 75.6 113.4
 184 30.2 24.2 36.2
 145 29.7 22.6 33.8

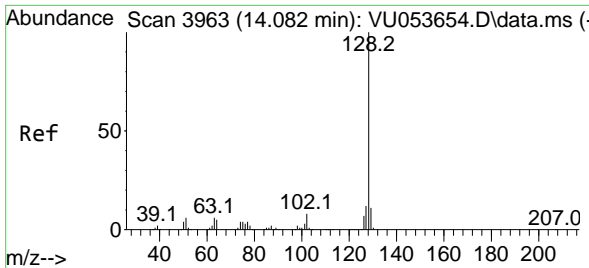


#70
 1,2,4-trichlorobenzene
 Concen: 35.873 ug/L
 RT: 13.835 min Scan# 3886
 Delta R.T. 0.000 min
 Lab File: VU053675.D
 Acq: 12 Apr 2023 20:29



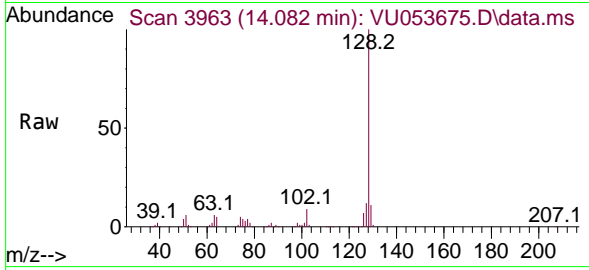
Tgt Ion:180 Resp: 104224
 Ion Ratio Lower Upper
 180 100
 182 95.0 75.8 113.8
 145 31.5 23.4 35.2



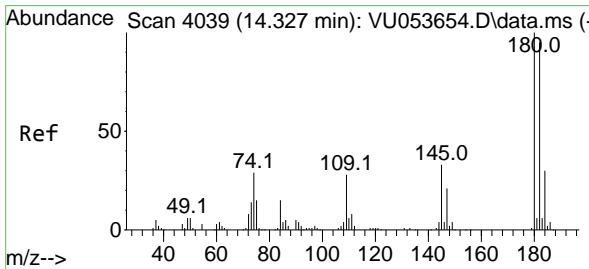
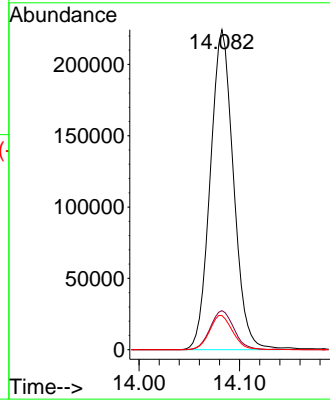
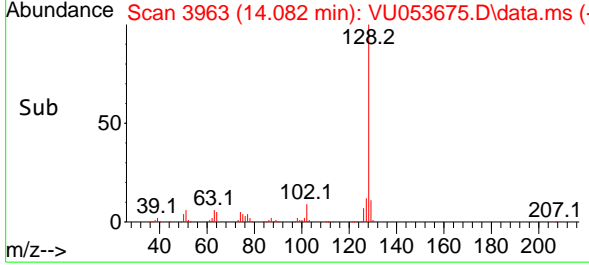


#71
 Naphthalene
 Concen: 41.394 ug/L
 RT: 14.082 min Scan# 3963
 Delta R.T. 0.000 min
 Lab File: VU053675.D
 Acq: 12 Apr 2023 20:29

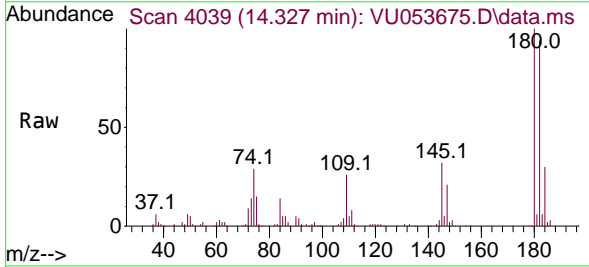
Instrument : MSVOA_U
 ClientSampleId : VSTD050196



Tgt Ion:128 Resp: 359977
 Ion Ratio Lower Upper
 128 100
 127 12.5 10.2 15.2
 129 10.7 8.6 12.8



#72
 1,2,3-Trichlorobenzene
 Concen: 37.302 ug/L
 RT: 14.327 min Scan# 4039
 Delta R.T. 0.000 min
 Lab File: VU053675.D
 Acq: 12 Apr 2023 20:29



Tgt Ion:180 Resp: 108248
 Ion Ratio Lower Upper
 180 100
 182 94.6 77.0 115.6
 145 32.1 25.4 38.0

