

Data Path : Z:\VOASRV\HPCHEM1\MSVOA U\DATA\VU041319\
 Data File : VU031166.D
 Acq On : 13 Apr 2019 18:59
 Operator : JC/SP
 Sample : K2353-02
 Misc : 5.0mL/MSVOA U/WATER
 ALS Vial : 16 Sample Multiplier: 1

Instrument :
 MSVOA_U
 ClientSampleId :
 ETJ60

Quant Time: Apr 13 22:32:13 2019
 Quant Method : Z:\VOASRV\HPCHEM1\MSVOA_U\METHOD\SOMULM040519WMA.M
 Quant Title : VOC Analysis
 QLast Update : Sat Apr 13 22:25:59 2019
 Response via : Initial Calibration

Internal Standards	R.T.	QIon	Response	Conc	Units	Dev(Min)
1) 1,4-Difluorobenzene	5.88	114	428666	50.00	ug/L	0.00
28) Chlorobenzene-d5	9.09	117	460640	50.00	ug/L	0.00
60) 1,4-Dichlorobenzene-d4	11.48	152	182722	50.00	ug/L	0.00

System Monitoring Compounds

4) Vinyl Chloride-d3	1.40	65	192282	50.25	ug/L	0.00
Spiked Amount	50.000	Range	60 - 135	Recovery	=	100.50%
7) Chloroethane-d5	1.68	69	153190	52.75	ug/L	0.00
Spiked Amount	50.000	Range	70 - 130	Recovery	=	105.50%
11) 1,1-Dichloroethene-d2	2.27	63	247752	35.80	ug/L	0.00
Spiked Amount	50.000	Range	60 - 125	Recovery	=	71.60%
21) 2-Butanone-d5	4.17	46	320624	105.72	ug/L	0.00
Spiked Amount	100.000	Range	40 - 130	Recovery	=	105.72%
24) Chloroform-d	4.64	84	323158	55.28	ug/L	0.00
Spiked Amount	50.000	Range	70 - 125	Recovery	=	110.56%
26) 1,2-Dichloroethane-d4	5.31	65	209345	52.49	ug/L	0.00
Spiked Amount	50.000	Range	70 - 125	Recovery	=	104.98%
32) Benzene-d6	5.34	84	620490	46.14	ug/L	0.00
Spiked Amount	50.000	Range	70 - 125	Recovery	=	92.28%
36) 1,2-Dichloropropane-d6	6.32	67	196968	42.74	ug/L	0.00
Spiked Amount	50.000	Range	70 - 120	Recovery	=	85.48%
41) Toluene-d8	7.56	98	504343	42.31	ug/L	0.00
Spiked Amount	50.000	Range	80 - 120	Recovery	=	84.62%
43) trans-1,3-Dichloropropene-	7.85	79	86876	41.34	ug/L	0.00
Spiked Amount	50.000	Range	60 - 125	Recovery	=	82.68%
47) 2-Hexanone-d5	8.31	63	169472	80.46	ug/L	0.00
Spiked Amount	100.000	Range	45 - 130	Recovery	=	80.46%
57) 1,1,2,2-Tetrachloroethane-	10.43	84	303969	48.90	ug/L	0.00
Spiked Amount	50.000	Range	65 - 120	Recovery	=	97.80%
64) 1,2-Dichlorobenzene-d4	11.86	152	193764	53.92	ug/L	0.00
Spiked Amount	50.000	Range	80 - 120	Recovery	=	107.84%

Target Compounds

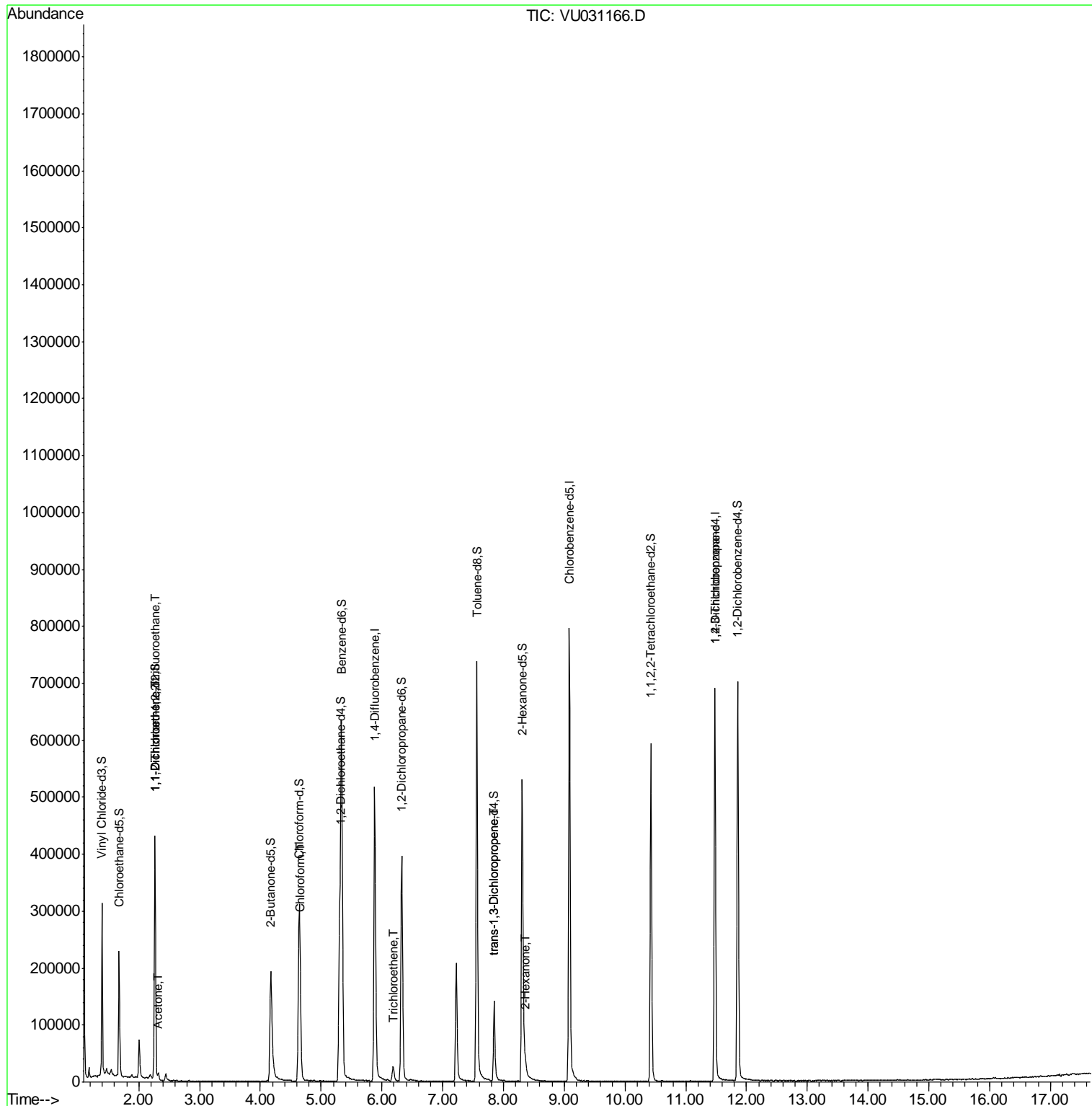
Target Compounds	R.T.	QIon	Response	Conc	Units	Ovalue
10) 1,1,2-Trichloro-1,2,2-trif	2.27	101	1871	0.610	ug/L #	20
12) 1,1-Dichloroethene	2.27	96	2168	0.732	ug/L #	1
13) Acetone	2.32	43	11360	3.661	ug/L	94
25) Chloroform	4.67	83	4997	0.766	ug/L	87
34) Trichloroethene	6.19	95	8940	2.418	ug/L	92
44) trans-1,3-Dichloropropene	7.85	75	3702	0.691	ug/L	92
48) 2-Hexanone	8.37	43	12935	2.415	ug/L #	84
59) 1,2,3-Trichloropropane	11.48	75	22622	4.425	ug/L	96

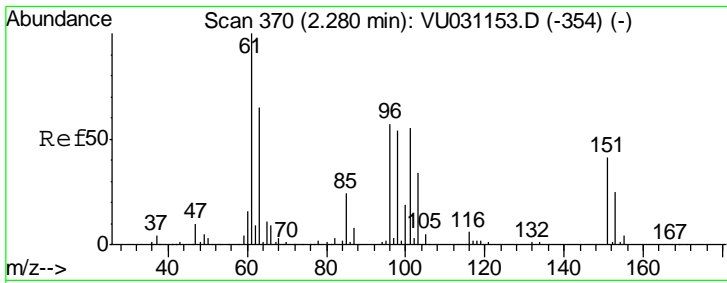
(#) = qualifier out of range (m) = manual integration (+) = signals summed

Data Path : Z:\VOASRV\HPCHEM1\MSVOA U\DATA\VU041319\
 Data File : VU031166.D
 Acq On : 13 Apr 2019 18:59
 Operator : JC/SP
 Sample : K2353-02
 Misc : 5.0mL/MSVOA U/WATER
 ALS Vial : 16 Sample Multiplier: 1

Instrument :
 MSVOA_U
 ClientSampled :
 ETJ60

Quant Time: Apr 13 22:32:13 2019
 Quant Method : Z:\VOASRV\HPCHEM1\MSVOA_U\METHOD\SOMULM040519WMA.M
 Quant Title : VOC Analysis
 QLast Update : Sat Apr 13 22:25:59 2019
 Response via : Initial Calibration





#10

1,1,2-Trichloro-1,2,2-trifluoroethane

Concen: 0.610 ug/L

RT: 2.27 min Scan# 366

Delta R.T. -0.01 min

Lab File: VU031166.D

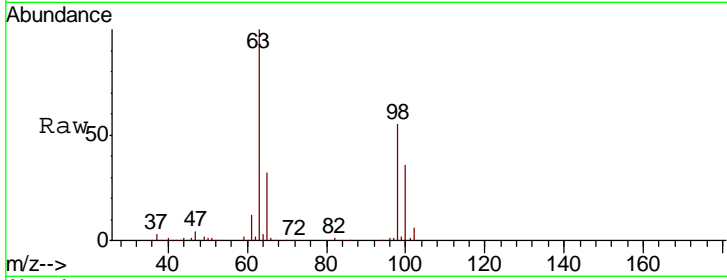
Acq: 13 Apr 2019 18:59

Instrument :

MSVOA_U

ClientSampled :

ETJ60



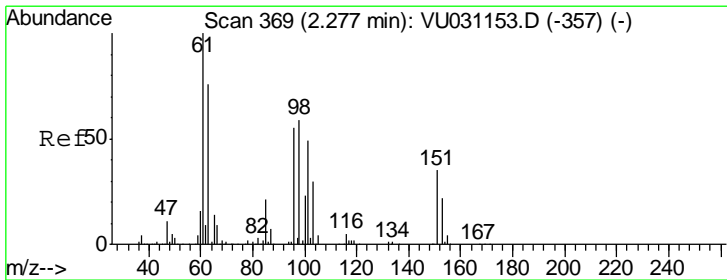
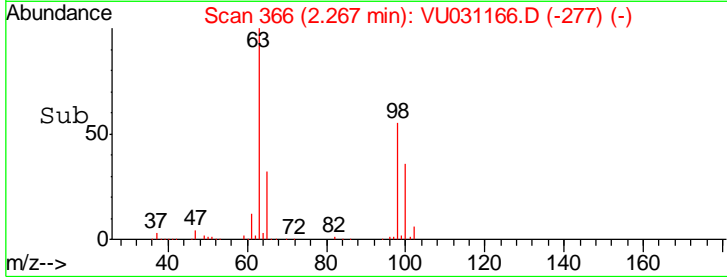
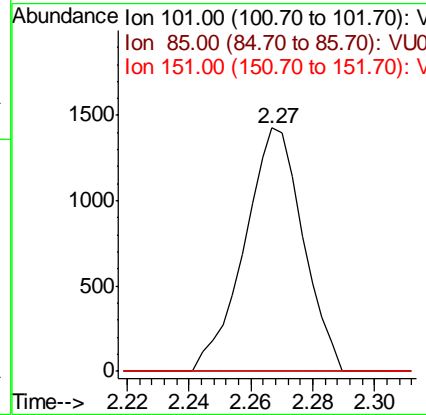
Tot Ion:101 Resp: 1871

Ion Ratio Lower Upper

101 100

85 0.0 36.8 55.2#

151 0.0 57.4 86.0#



#12

1,1-Dichloroethene

Concen: 0.732 ug/L

RT: 2.27 min Scan# 367

Delta R.T. -0.01 min

Lab File: VU031166.D

Acq: 13 Apr 2019 18:59

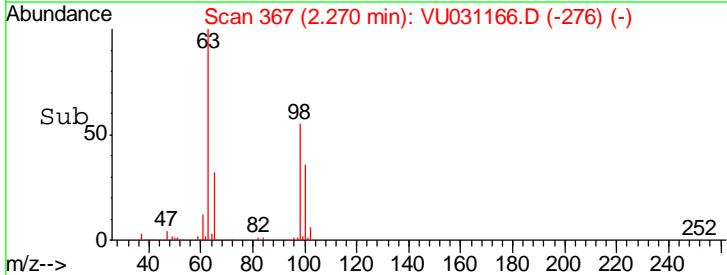
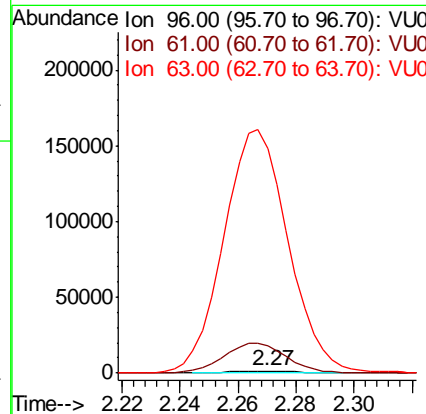
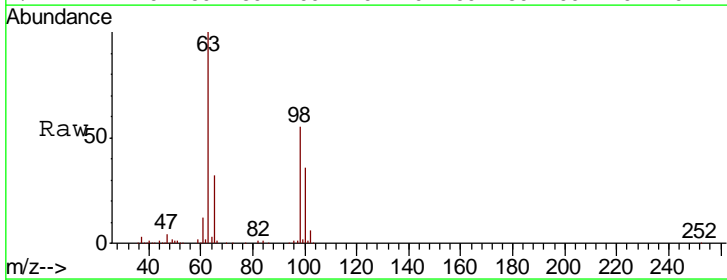
Tgt Ion: 96 Resp: 2168

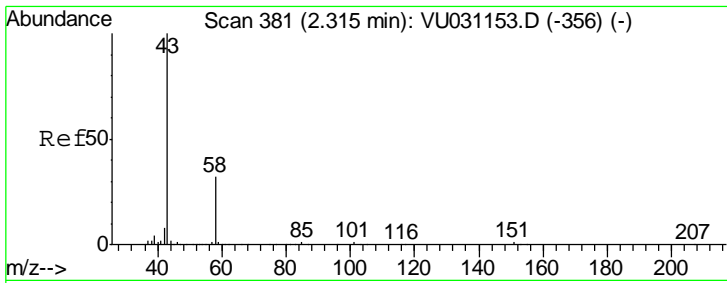
Ion Ratio Lower Upper

96 100

61 1315.3 132.0 245.2#

63 10688.2 90.9 168.9#

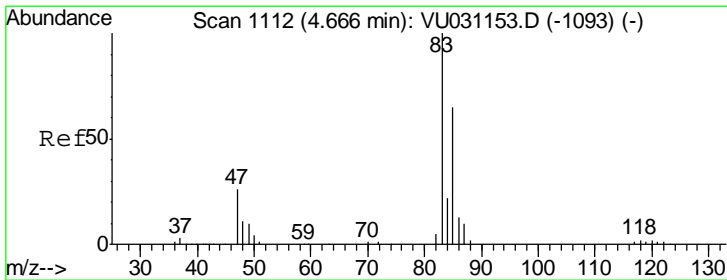
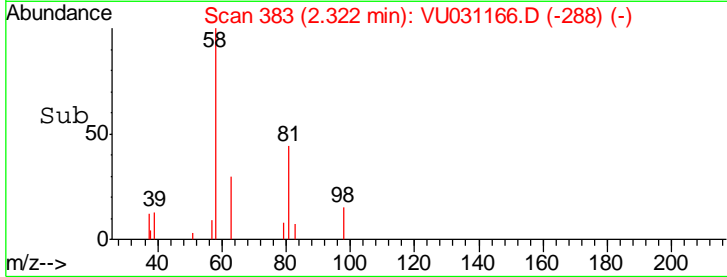
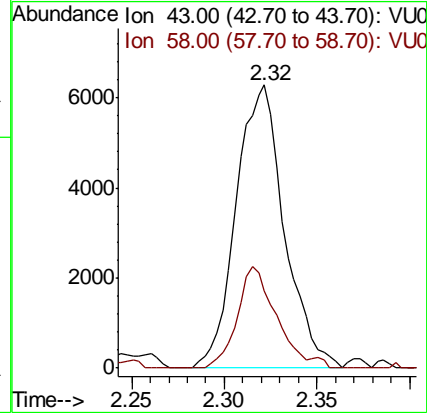
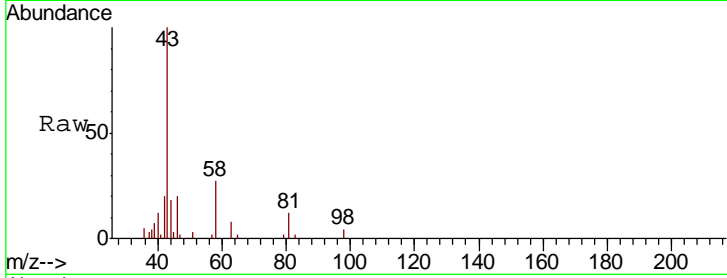




#13
 Acetone
 Concen: 3.661 ug/L
 RT: 2.32 min Scan# 383
 Delta R.T. 0.01 min
 Lab File: VU031166.D
 Acq: 13 Apr 2019 18:59

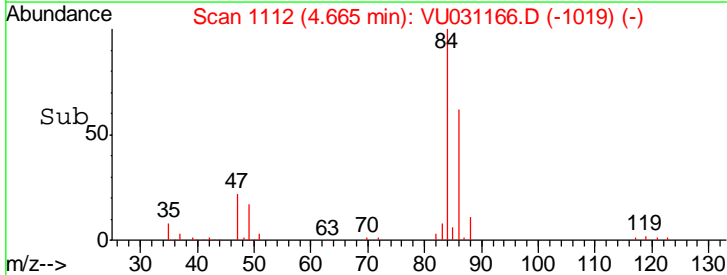
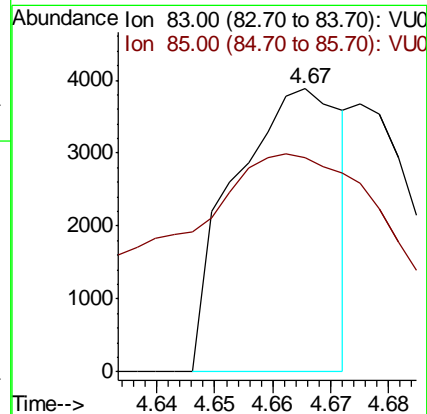
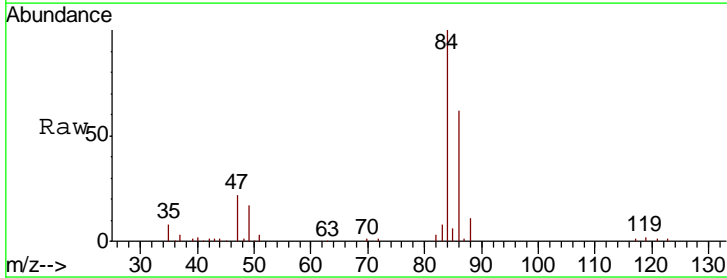
Instrument :
 MSVOA_U
 ClientSampled :
 ETJ60

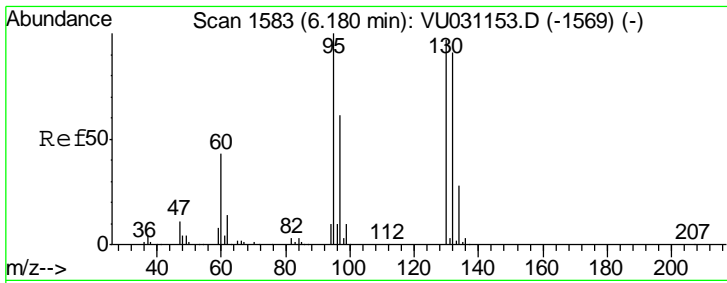
Tgt Ion: 43 Resp: 11360
 Ion Ratio Lower Upper
 43 100
 58 28.4 0.0 64.0



#25
 Chloroform
 Concen: 0.766 ug/L
 RT: 4.67 min Scan# 1112
 Delta R.T. -0.00 min
 Lab File: VU031166.D
 Acq: 13 Apr 2019 18:59

Tgt Ion: 83 Resp: 4997
 Ion Ratio Lower Upper
 83 100
 85 75.8 45.8 85.0

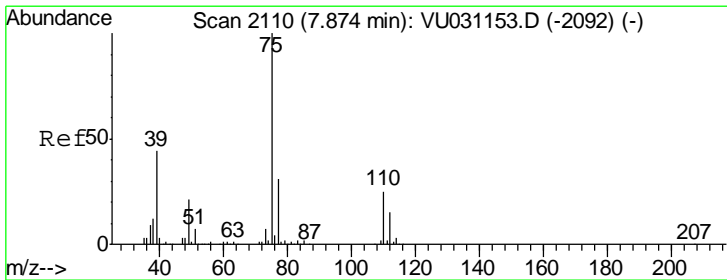
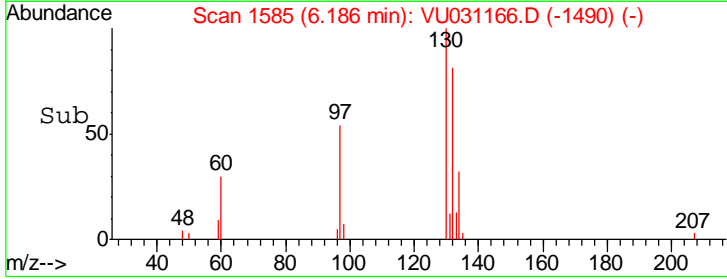
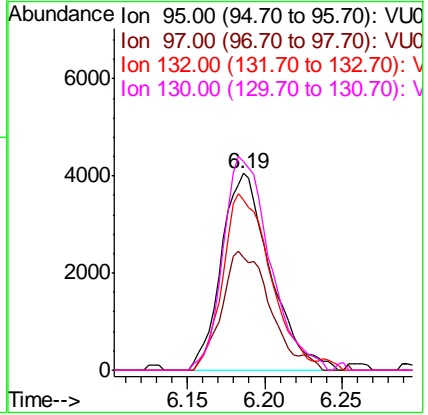
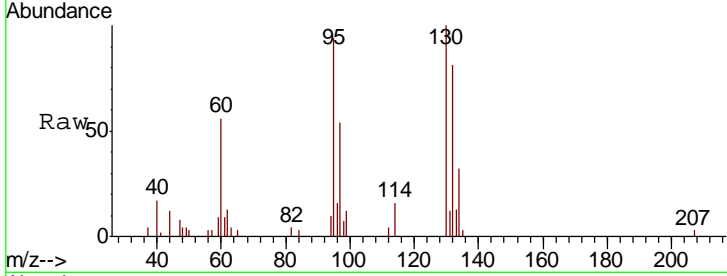




#34
 Trichloroethene
 Concen: 2.418 ug/L
 RT: 6.19 min Scan# 1585
 Delta R.T. 0.01 min
 Lab File: VU031166.D
 Acq: 13 Apr 2019 18:59

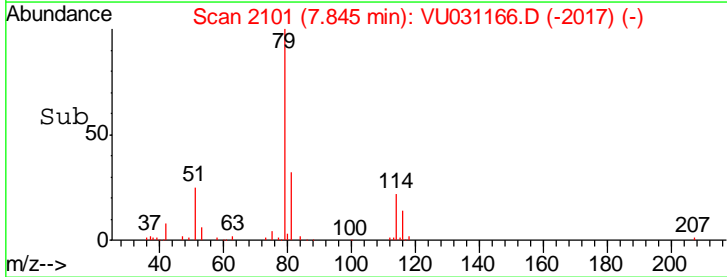
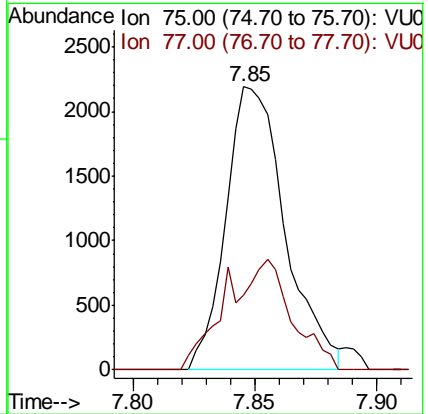
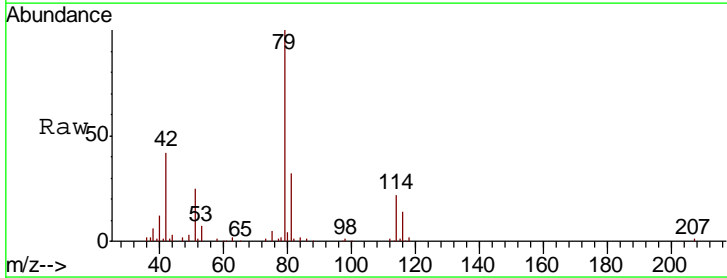
Instrument : MSVOA_U
 ClientSampled : ETJ60

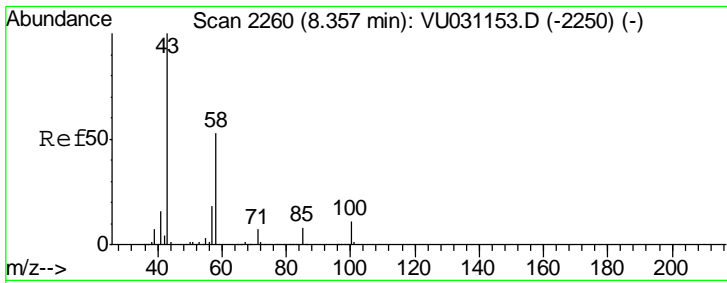
Tgt Ion	Resp	Lower	Upper
95	100		
97	57.0	44.5	82.7
132	86.3	61.5	114.1
130	106.0	64.9	120.5



#44
 trans-1,3-Dichloropropene
 Concen: 0.691 ug/L
 RT: 7.85 min Scan# 2101
 Delta R.T. -0.03 min
 Lab File: VU031166.D
 Acq: 13 Apr 2019 18:59

Tgt Ion	Resp	Lower	Upper
75	100		
77	26.3	21.6	40.0

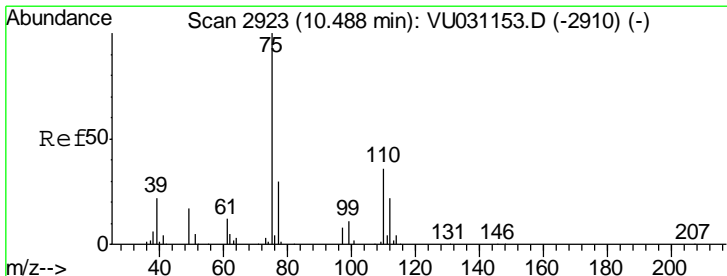
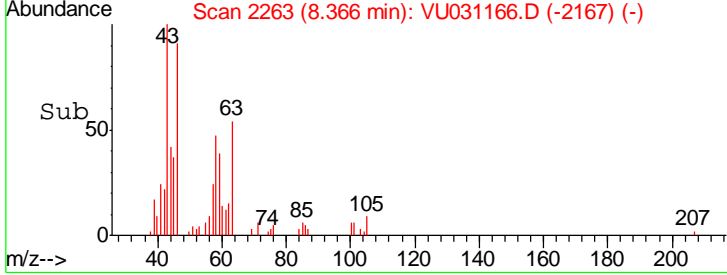
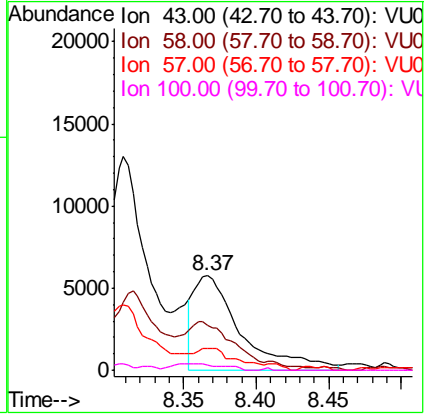
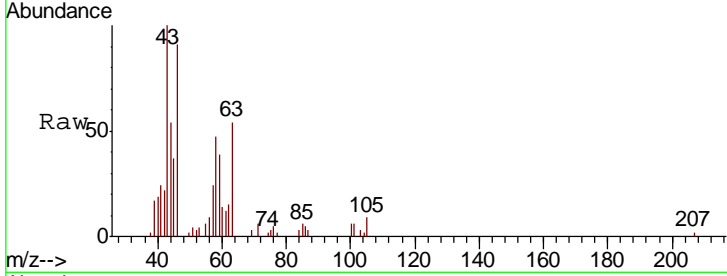




#48
 2-Hexanone
 Concen: 2.415 ug/L
 RT: 8.37 min Scan# 2263
 Delta R.T. 0.01 min
 Lab File: VU031166.D
 Acq: 13 Apr 2019 18:59

Instrument :
 MSVOA_U
ClientSampled :
 ETJ60

Tgt Ion	Resp	Lower	Upper
43	12935		
58	43.5	41.9	62.9
57	6.4	14.3	21.5#
100	2.1	7.1	10.7#



#59
 1,2,3-Trichloropropane
 Concen: 4.425 ug/L
 RT: 11.48 min Scan# 3231
 Delta R.T. 0.99 min
 Lab File: VU031166.D
 Acq: 13 Apr 2019 18:59

Tgt Ion	Resp	Lower	Upper
75	22622		
77	34.8	26.1	39.1

