

Data Path : Z:\VOASRV\HPCHEM1\MSVOA U\DATA\VU041319\
 Data File : VU031167.D
 Acq On : 13 Apr 2019 19:22
 Operator : JC/SP
 Sample : K2353-03MS
 Misc : 5.0mL/MSVOA U/WATER
 ALS Vial : 17 Sample Multiplier: 1

Instrument :
 MSVOA_U
 ClientSampleId :
 ETJ60MS

Quant Time: Apr 13 22:32:21 2019
 Quant Method : Z:\VOASRV\HPCHEM1\MSVOA_U\METHOD\SOMULM040519WMA.M
 Quant Title : VOC Analysis
 QLast Update : Sat Apr 13 22:25:59 2019
 Response via : Initial Calibration

Internal Standards	R.T.	QIon	Response	Conc	Units	Dev(Min)
1) 1,4-Difluorobenzene	5.88	114	444440	50.00	ug/L	0.00
28) Chlorobenzene-d5	9.09	117	475400	50.00	ug/L	0.00
60) 1,4-Dichlorobenzene-d4	11.48	152	194367	50.00	ug/L	0.00

System Monitoring Compounds

4) Vinyl Chloride-d3	1.39	65	196518	49.53	ug/L	0.00
Spiked Amount	50.000	Range	60 - 135	Recovery	=	99.06%
7) Chloroethane-d5	1.67	69	153871	51.10	ug/L	0.00
Spiked Amount	50.000	Range	70 - 130	Recovery	=	102.20%
11) 1,1-Dichloroethene-d2	2.27	63	337439	47.02	ug/L	0.00
Spiked Amount	50.000	Range	60 - 125	Recovery	=	94.04%
21) 2-Butanone-d5	4.17	46	316431	100.63	ug/L	0.00
Spiked Amount	100.000	Range	40 - 130	Recovery	=	100.63%
24) Chloroform-d	4.64	84	303555	50.09	ug/L	0.00
Spiked Amount	50.000	Range	70 - 125	Recovery	=	100.18%
26) 1,2-Dichloroethane-d4	5.30	65	213163	51.55	ug/L	0.00
Spiked Amount	50.000	Range	70 - 125	Recovery	=	103.10%
32) Benzene-d6	5.33	84	614730	44.29	ug/L	0.00
Spiked Amount	50.000	Range	70 - 125	Recovery	=	88.58%
36) 1,2-Dichloropropane-d6	6.32	67	208557	43.85	ug/L	0.00
Spiked Amount	50.000	Range	70 - 120	Recovery	=	87.70%
41) Toluene-d8	7.56	98	539190	43.83	ug/L	0.00
Spiked Amount	50.000	Range	80 - 120	Recovery	=	87.66%
43) trans-1,3-Dichloropropene-	7.85	79	92555	42.68	ug/L	0.00
Spiked Amount	50.000	Range	60 - 125	Recovery	=	85.36%
47) 2-Hexanone-d5	8.31	63	191651	88.16	ug/L	0.00
Spiked Amount	100.000	Range	45 - 130	Recovery	=	88.16%
57) 1,1,2,2-Tetrachloroethane-	10.43	84	318598	49.66	ug/L	0.00
Spiked Amount	50.000	Range	65 - 120	Recovery	=	99.32%
64) 1,2-Dichlorobenzene-d4	11.86	152	200271	52.39	ug/L	0.00
Spiked Amount	50.000	Range	80 - 120	Recovery	=	104.78%

Target Compounds

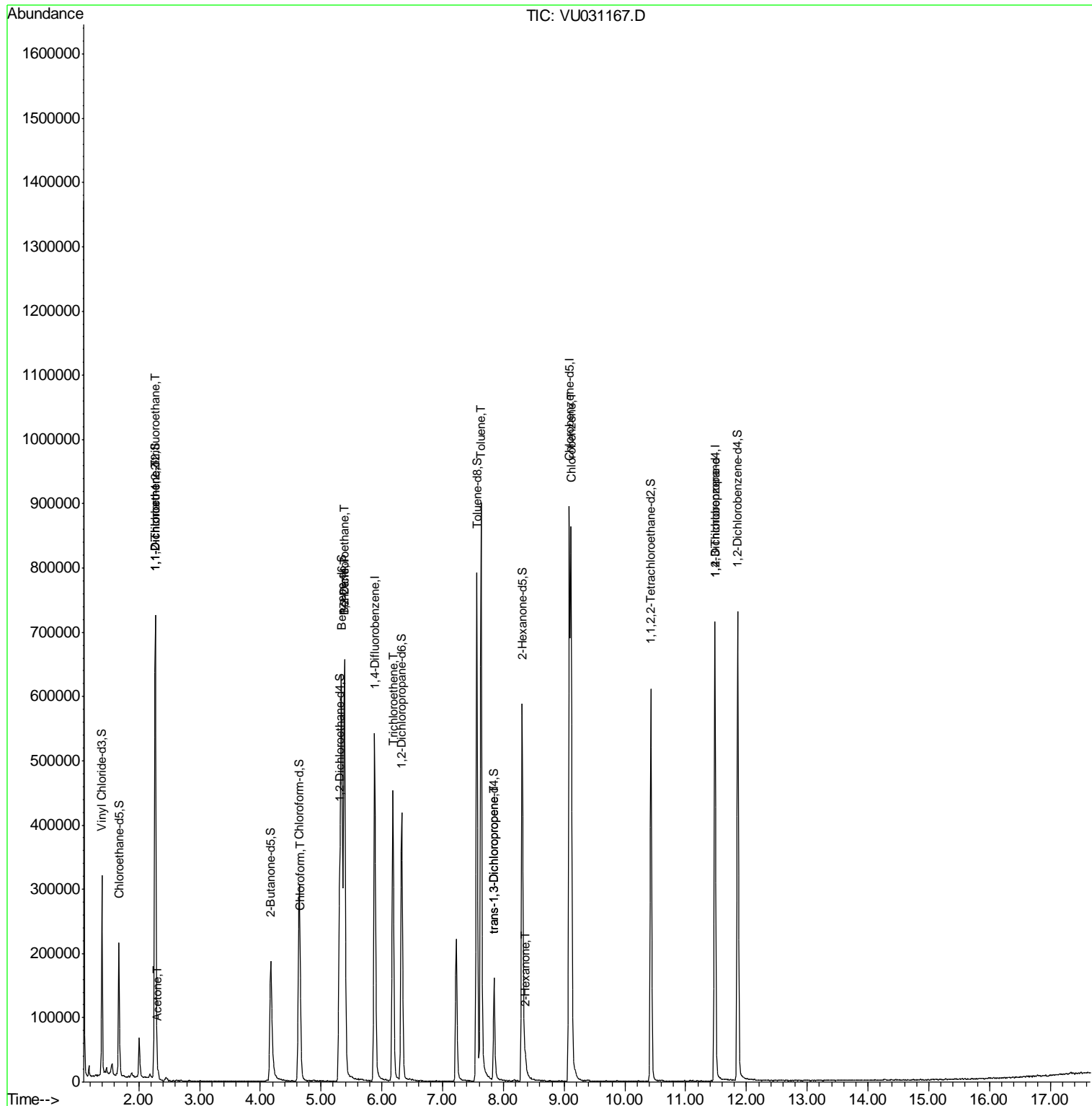
Target Compounds	R.T.	QIon	Response	Conc	Units	Ovalue
10) 1,1,2-Trichloro-1,2,2-trif	2.27	101	2189	0.688	ug/L #	24
12) 1,1-Dichloroethene	2.28	96	133104	43.325	ug/L	90
13) Acetone	2.32	43	8553	2.658	ug/L	90
25) Chloroform	4.67	83	11645	1.721	ug/L	99
27) 1,2-Dichloroethane	5.38	62	5206	1.008	ug/L #	75
33) Benzene	5.38	78	647598	41.627	ug/L	100
34) Trichloroethene	6.18	95	162557	42.603	ug/L	96
42) Toluene	7.63	91	664130	41.821	ug/L	100
44) trans-1,3-Dichloropropene	7.85	75	3831	0.693	ug/L	96
48) 2-Hexanone	8.37	43	11318	2.048	ug/L #	83
51) Chlorobenzene	9.12	112	453031	46.514	ug/L	97
59) 1,2,3-Trichloropropane	11.48	75	22335	4.233	ug/L	91

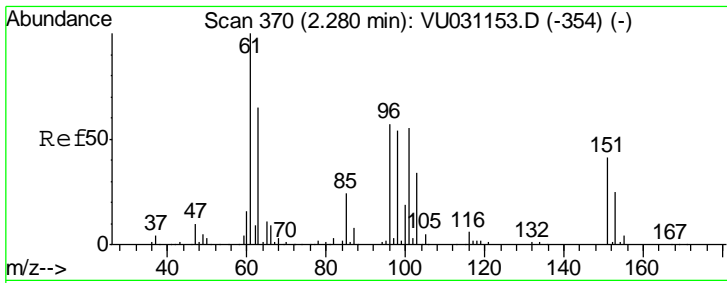
(#) = qualifier out of range (m) = manual integration (+) = signals summed

Data Path : Z:\VOASRV\HPCHEM1\MSVOA U\DATA\VU041319\
 Data File : VU031167.D
 Acq On : 13 Apr 2019 19:22
 Operator : JC/SP
 Sample : K2353-03MS
 Misc : 5.0mL/MSVOA U/WATER
 ALS Vial : 17 Sample Multiplier: 1

Instrument :
 MSVOA_U
 ClientSampled :
 ETJ60MS

Quant Time: Apr 13 22:32:21 2019
 Quant Method : Z:\VOASRV\HPCHEM1\MSVOA_U\METHOD\SOMULM040519WMA.M
 Quant Title : VOC Analysis
 QLast Update : Sat Apr 13 22:25:59 2019
 Response via : Initial Calibration

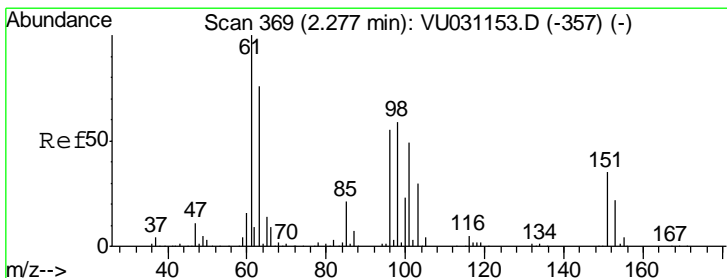
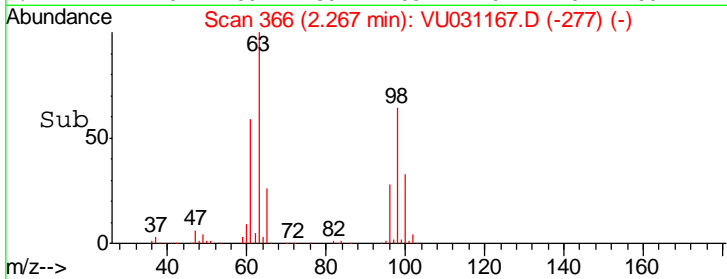
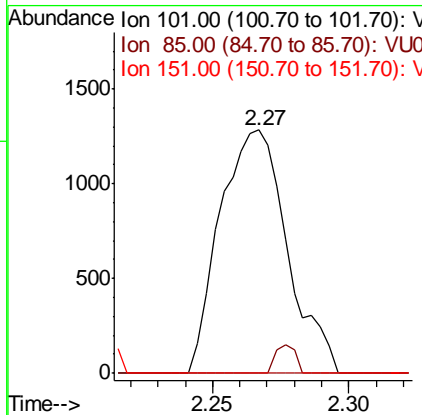
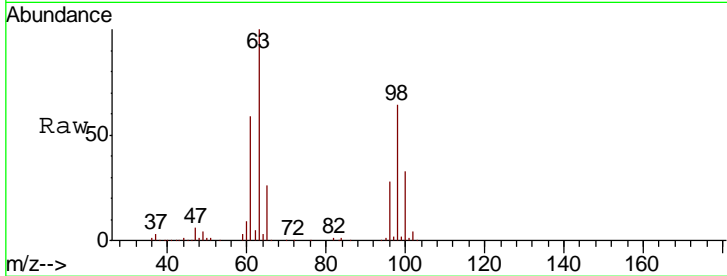




#10
 1,1,2-Trichloro-1,2,2-trifluoroethane
 Concen: 0.688 ug/L
 RT: 2.27 min Scan# 366
 Delta R.T. -0.01 min
 Lab File: VU031167.D
 Acq: 13 Apr 2019 19:22

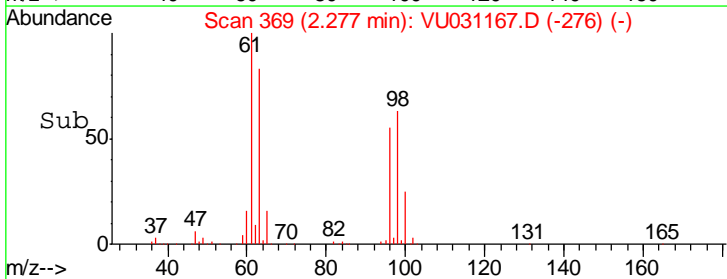
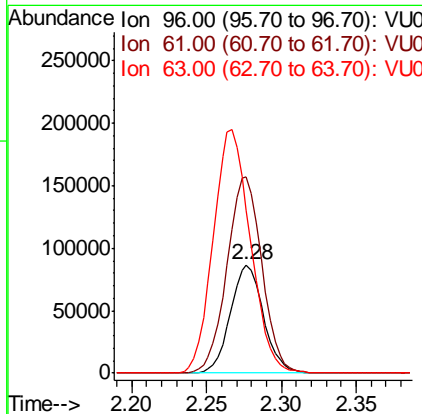
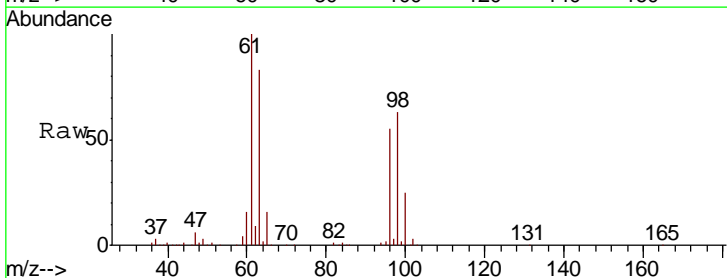
Instrument :
 MSVOA_U
ClientSampled :
 ETJ60MS

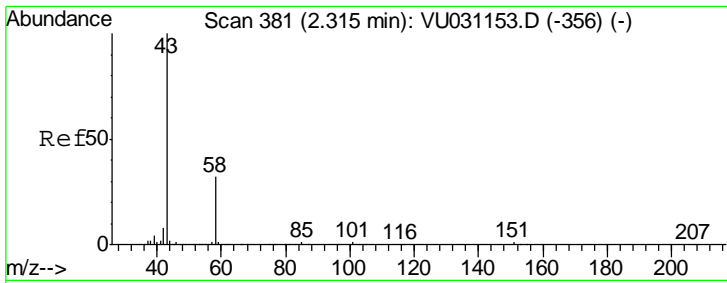
Tgt Ion	Resp	Lower	Upper
101	2189		
101	100		
85	3.5	36.8	55.2#
151	2.4	57.4	86.0#



#12
 1,1-Dichloroethene
 Concen: 43.325 ug/L
 RT: 2.28 min Scan# 369
 Delta R.T. 0.00 min
 Lab File: VU031167.D
 Acq: 13 Apr 2019 19:22

Tgt Ion	Resp	Lower	Upper
96	133104		
96	100		
61	180.9	132.0	245.2
63	150.2	90.9	168.9

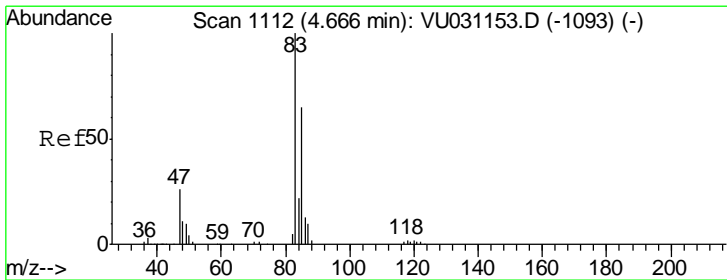
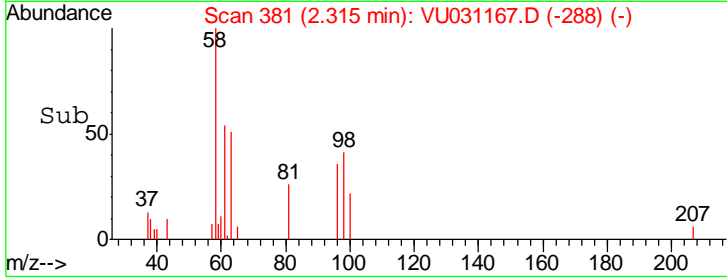
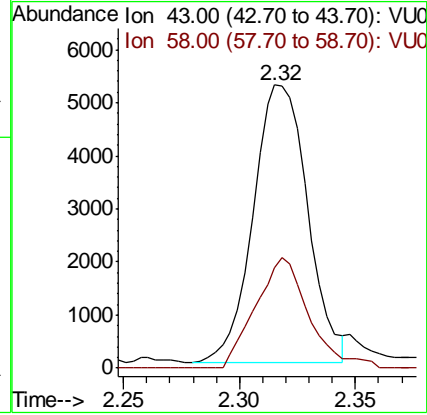
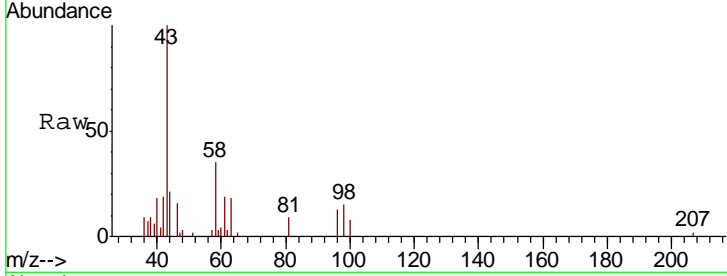




#13
 Acetone
 Concen: 2.658 ug/L
 RT: 2.32 min Scan# 381
 Delta R.T. 0.00 min
 Lab File: VU031167.D
 Acq: 13 Apr 2019 19:22

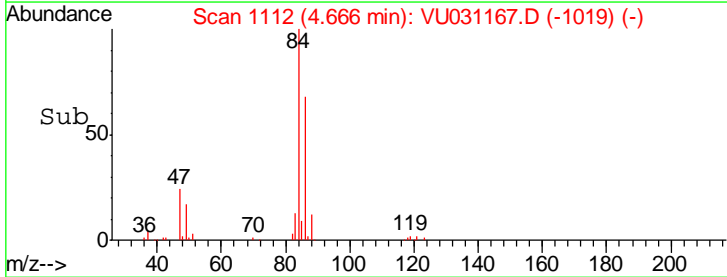
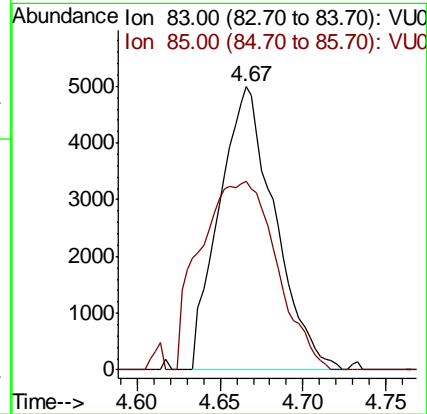
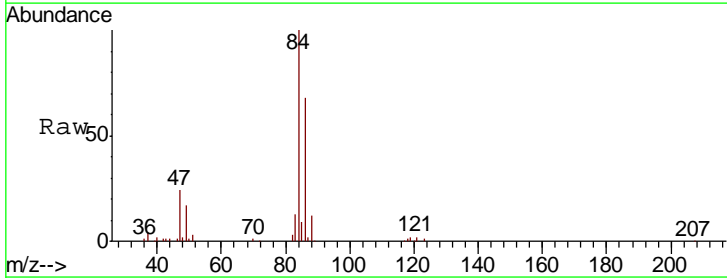
Instrument :
 MSVOA_U
 ClientSampleID :
 ETJ60MS

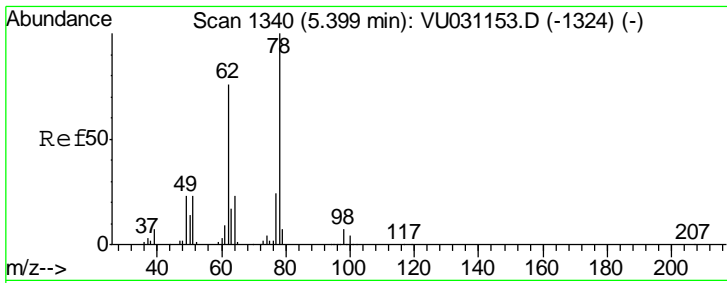
Tgt Ion	Resp	Lower	Upper
43	100		
58	37.8	0.0	64.0



#25
 Chloroform
 Concen: 1.721 ug/L
 RT: 4.67 min Scan# 1112
 Delta R.T. 0.00 min
 Lab File: VU031167.D
 Acq: 13 Apr 2019 19:22

Tgt Ion	Resp	Lower	Upper
83	100		
85	66.5	45.8	85.0

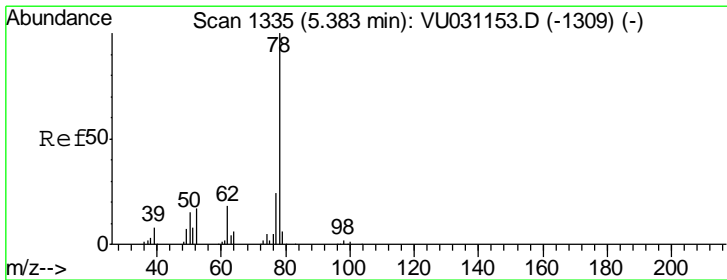
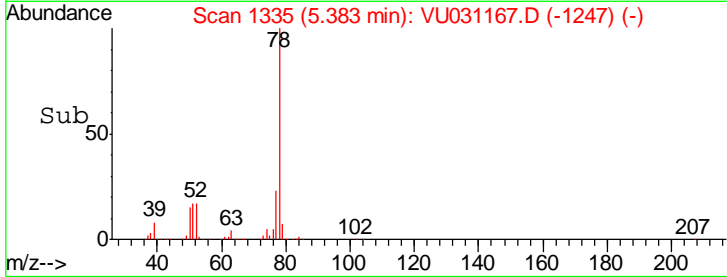
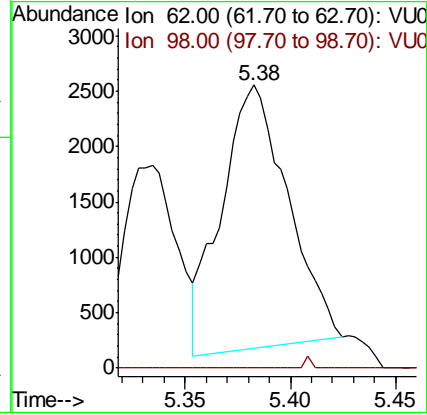
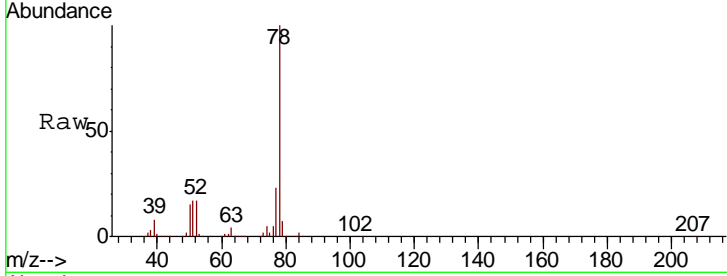




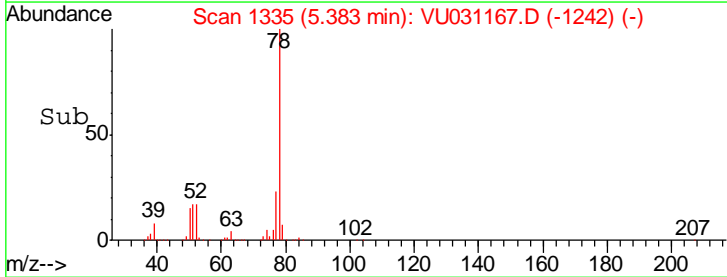
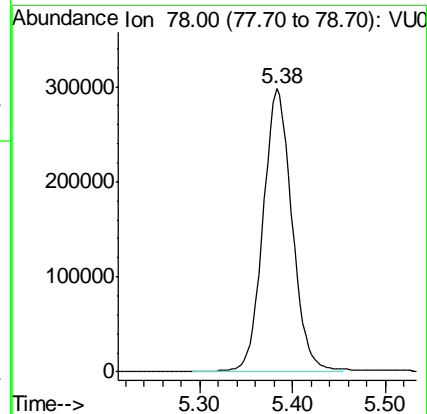
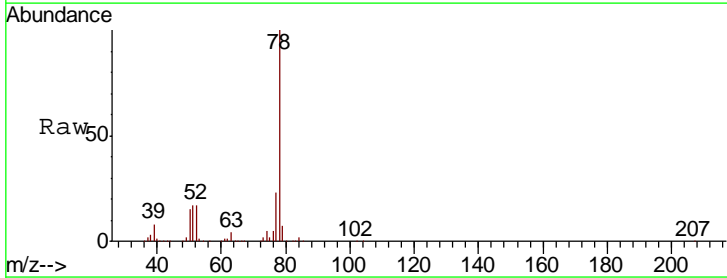
#27
 1,2-Dichloroethane
 Concen: 1.008 ug/L
 RT: 5.38 min Scan# 1335
 Delta R.T. -0.02 min
 Lab File: VU031167.D
 Acq: 13 Apr 2019 19:22

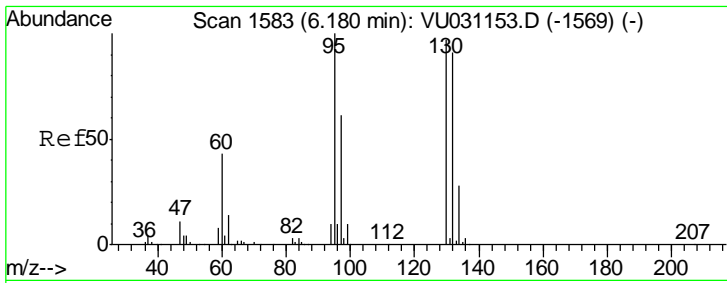
Instrument :
 MSVOA_U
 ClientSampled :
 ETJ60MS

Tgt Ion: 62 Resp: 5206
 Ion Ratio Lower Upper
 62 100
 98 0.0 7.2 10.8#



#33
 Benzene
 Concen: 41.627 ug/L
 RT: 5.38 min Scan# 1335
 Delta R.T. 0.00 min
 Lab File: VU031167.D
 Acq: 13 Apr 2019 19:22
 Tgt Ion: 78 Resp: 647598





#34

Trichloroethene

Concen: 42.603 ug/L

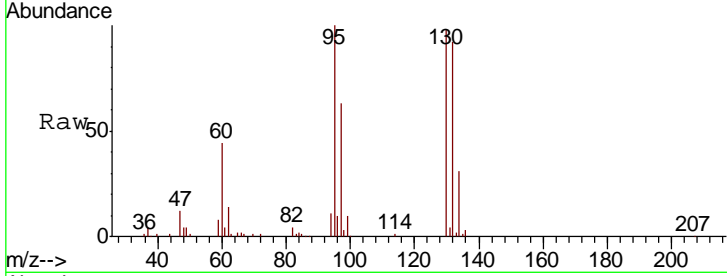
RT: 6.18 min Scan# 1583

Delta R.T. 0.00 min

Lab File: VU031167.D

Acq: 13 Apr 2019 19:22

Instrument :
MSVOA_U
ClientSampled :
ETJ60MS



Tgt Ion: 95 Resp: 162557

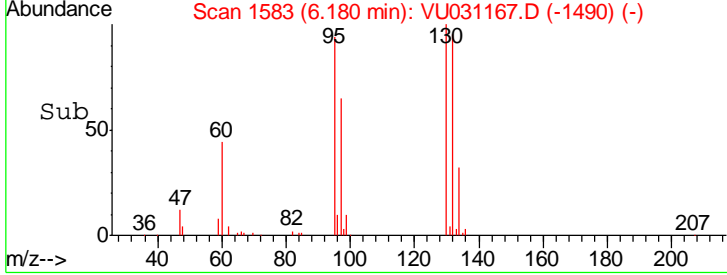
Ion Ratio Lower Upper

95 100

97 63.3 44.5 82.7

132 92.2 61.5 114.1

130 97.5 64.9 120.5

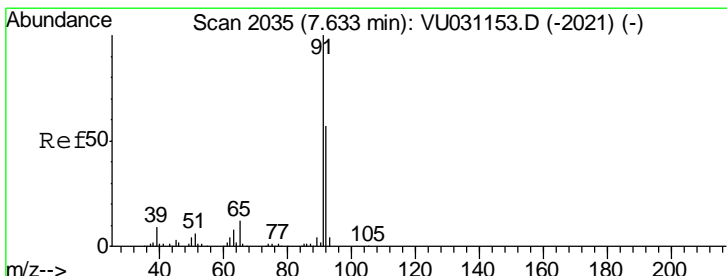
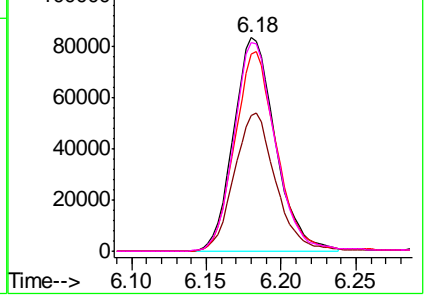


Abundance Ion 95.00 (94.70 to 95.70): VU0

Ion 97.00 (96.70 to 97.70): VU0

Ion 132.00 (131.70 to 132.70): V

Ion 130.00 (129.70 to 130.70): V



#42

Toluene

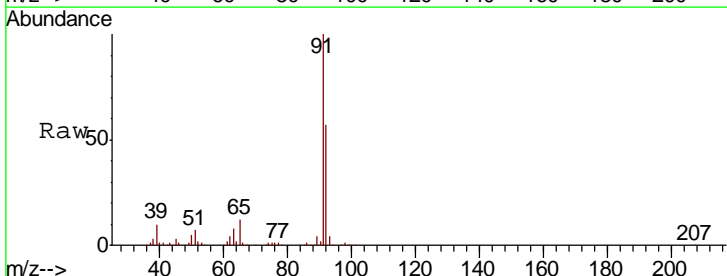
Concen: 41.821 ug/L

RT: 7.63 min Scan# 2035

Delta R.T. 0.00 min

Lab File: VU031167.D

Acq: 13 Apr 2019 19:22

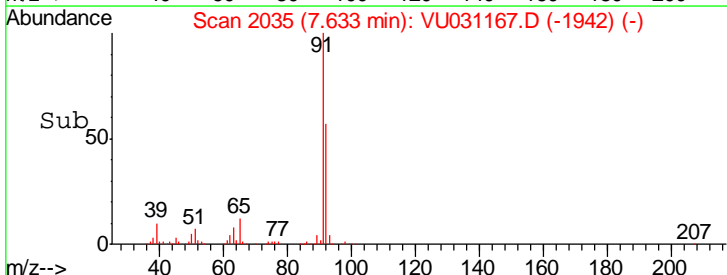


Tgt Ion: 91 Resp: 664130

Ion Ratio Lower Upper

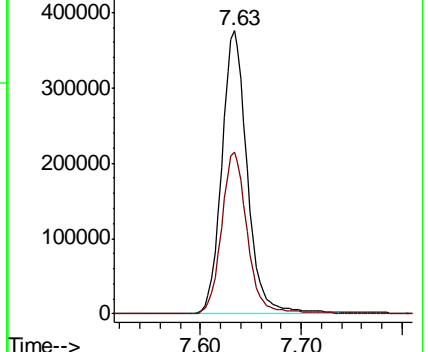
91 100

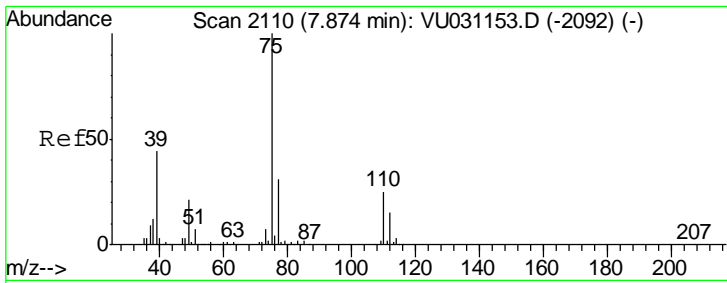
92 57.3 40.0 74.4



Abundance Ion 91.00 (90.70 to 91.70): VU0

Ion 92.00 (91.70 to 92.70): VU0

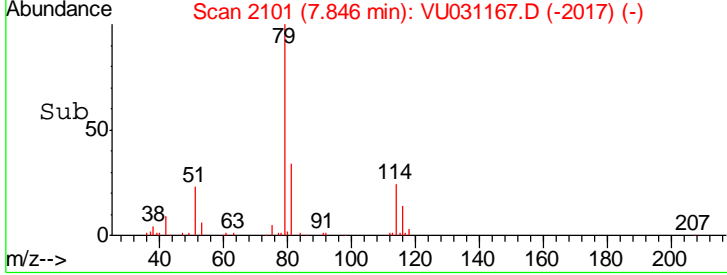
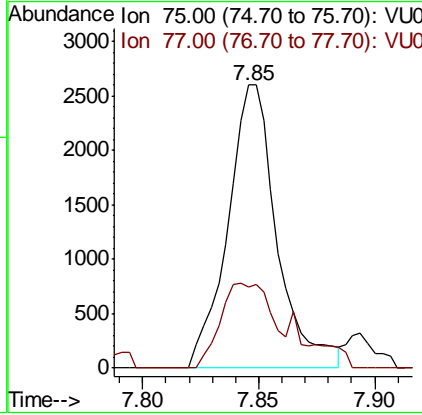
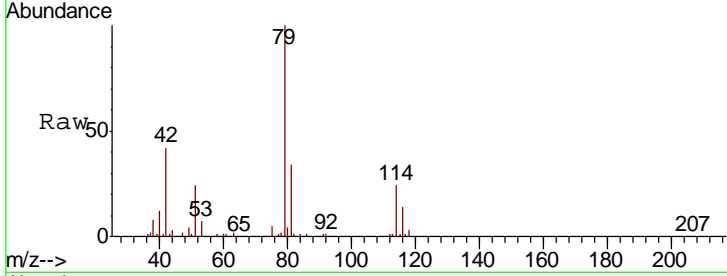




#44
 trans-1,3-Dichloropropene
 Concen: 0.693 ug/L
 RT: 7.85 min Scan# 2101
 Delta R.T. -0.03 min
 Lab File: VU031167.D
 Acq: 13 Apr 2019 19:22

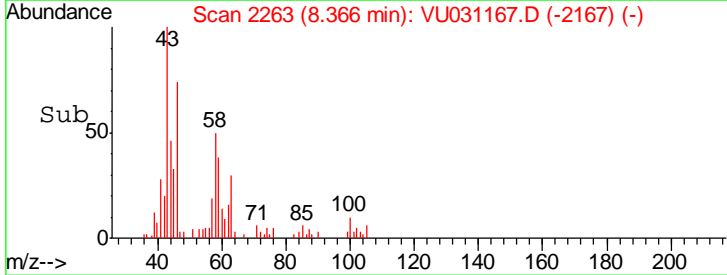
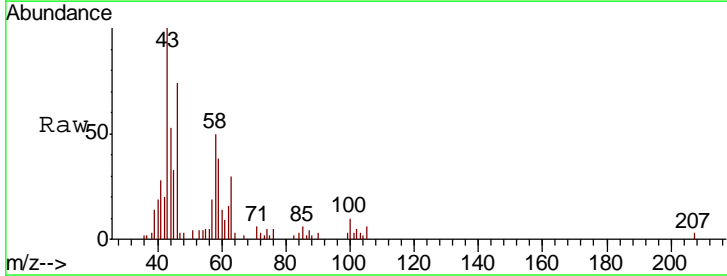
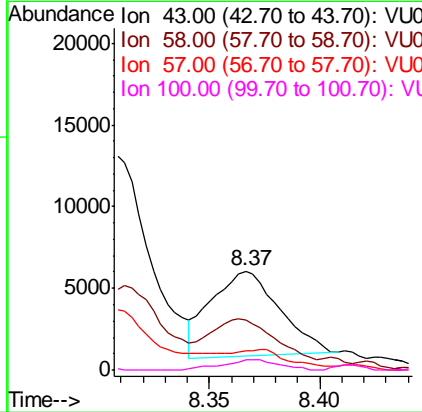
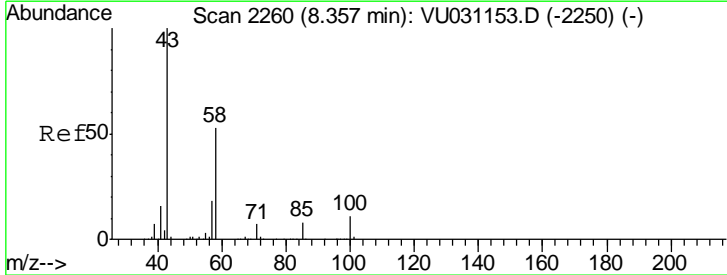
Instrument : MSVOA_U
 ClientSampleId : ETJ60MS

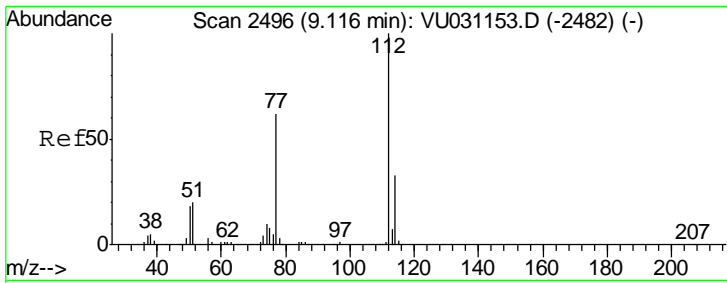
Tgt Ion	Resp	Lower	Upper
75	3831		
77	28.8	21.6	40.0



#48
 2-Hexanone
 Concen: 2.048 ug/L
 RT: 8.37 min Scan# 2263
 Delta R.T. 0.01 min
 Lab File: VU031167.D
 Acq: 13 Apr 2019 19:22

Tgt Ion	Resp	Lower	Upper
43	11318		
58	60.1	41.9	62.9
57	0.0	14.3	21.5#
100	9.8	7.1	10.7

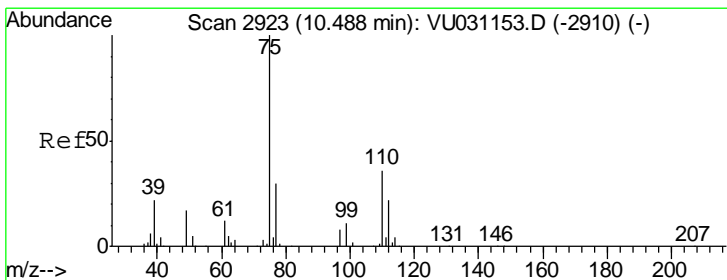
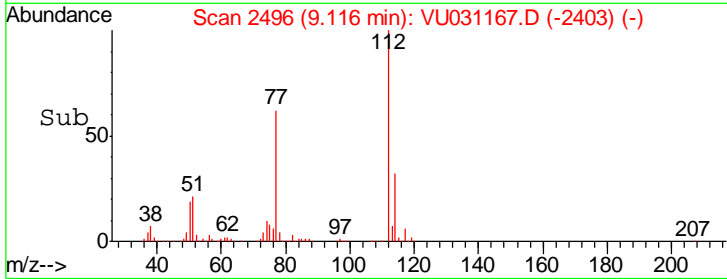
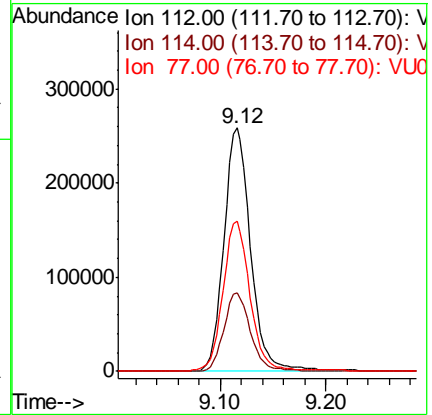
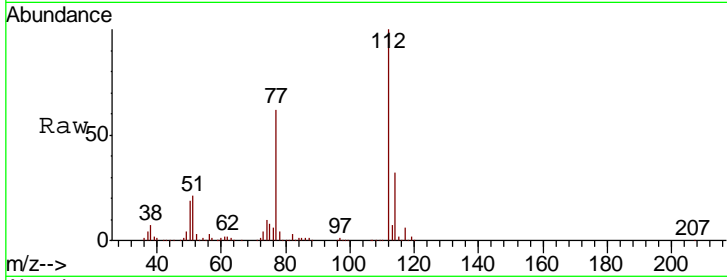




#51
 Chlorobenzene
 Concen: 46.514 ug/L
 RT: 9.12 min Scan# 2496
 Delta R.T. 0.00 min
 Lab File: VU031167.D
 Acq: 13 Apr 2019 19:22

Instrument :
 MSVOA_U
 ClientSampled :
 ETJ60MS

Tgt Ion	Resp	Lower	Upper
112	453031		
114	32.2	22.2	41.2
77	61.8	51.7	77.5



#59
 1,2,3-Trichloropropane
 Concen: 4.233 ug/L
 RT: 11.48 min Scan# 3232
 Delta R.T. 0.99 min
 Lab File: VU031167.D
 Acq: 13 Apr 2019 19:22

Tgt Ion	Resp	Lower	Upper
75	22335		
77	37.7	26.1	39.1

