

Data Path : Z:\VOASRV\HPCHEM1\MSVOA U\DATA\VU041319\
 Data File : VU031170.D
 Acq On : 13 Apr 2019 20:31
 Operator : JC/SP
 Sample : K2341-15 10X
 Misc : 5.0mL/MSVOA U/WATER
 ALS Vial : 20 Sample Multiplier: 1

Instrument :
 MSVOA_U
 ClientSampleID :
 DB737

Quant Time: Apr 15 11:51:53 2019
 Quant Method : Z:\VOASRV\HPCHEM1\MSVOA_U\METHOD\SOMULM040519WMA.M
 Quant Title : VOC Analysis
 QLast Update : Sat Apr 13 22:25:59 2019
 Response via : Initial Calibration

Internal Standards	R.T.	QIon	Response	Conc	Units	Dev(Min)
1) 1,4-Difluorobenzene	5.88	114	477065	50.00	ug/L	0.00
28) Chlorobenzene-d5	9.09	117	464918	50.00	ug/L	0.00
60) 1,4-Dichlorobenzene-d4	11.48	152	184812	50.00	ug/L	0.00

System Monitoring Compounds

4) Vinyl Chloride-d3	1.39	65	190918	44.83	ug/L	0.00
Spiked Amount	50.000	Range	60 - 135	Recovery	=	89.66%
7) Chloroethane-d5	1.68	69	153200	47.40	ug/L	0.00
Spiked Amount	50.000	Range	70 - 130	Recovery	=	94.80%
11) 1,1-Dichloroethene-d2	2.27	63	256102	33.25	ug/L	0.00
Spiked Amount	50.000	Range	60 - 125	Recovery	=	66.50%
21) 2-Butanone-d5	4.17	46	323598	95.87	ug/L	0.00
Spiked Amount	100.000	Range	40 - 130	Recovery	=	95.87%
24) Chloroform-d	4.64	84	316643	48.67	ug/L	0.00
Spiked Amount	50.000	Range	70 - 125	Recovery	=	97.34%
26) 1,2-Dichloroethane-d4	5.31	65	220703	49.72	ug/L	0.00
Spiked Amount	50.000	Range	70 - 125	Recovery	=	99.44%
32) Benzene-d6	5.34	84	659630	48.60	ug/L	0.00
Spiked Amount	50.000	Range	70 - 125	Recovery	=	97.20%
36) 1,2-Dichloropropane-d6	6.32	67	222876	47.92	ug/L	0.00
Spiked Amount	50.000	Range	70 - 120	Recovery	=	95.84%
41) Toluene-d8	7.56	98	563455	46.84	ug/L	0.00
Spiked Amount	50.000	Range	80 - 120	Recovery	=	93.68%
43) trans-1,3-Dichloropropene-	7.85	79	88932	41.93	ug/L	0.00
Spiked Amount	50.000	Range	60 - 125	Recovery	=	83.86%
47) 2-Hexanone-d5	8.31	63	194845	91.65	ug/L	0.00
Spiked Amount	100.000	Range	45 - 130	Recovery	=	91.65%
57) 1,1,2,2-Tetrachloroethane-	10.43	84	309901	49.39	ug/L	0.00
Spiked Amount	50.000	Range	65 - 120	Recovery	=	98.78%
64) 1,2-Dichlorobenzene-d4	11.86	152	197953	54.46	ug/L	0.00
Spiked Amount	50.000	Range	80 - 120	Recovery	=	108.92%

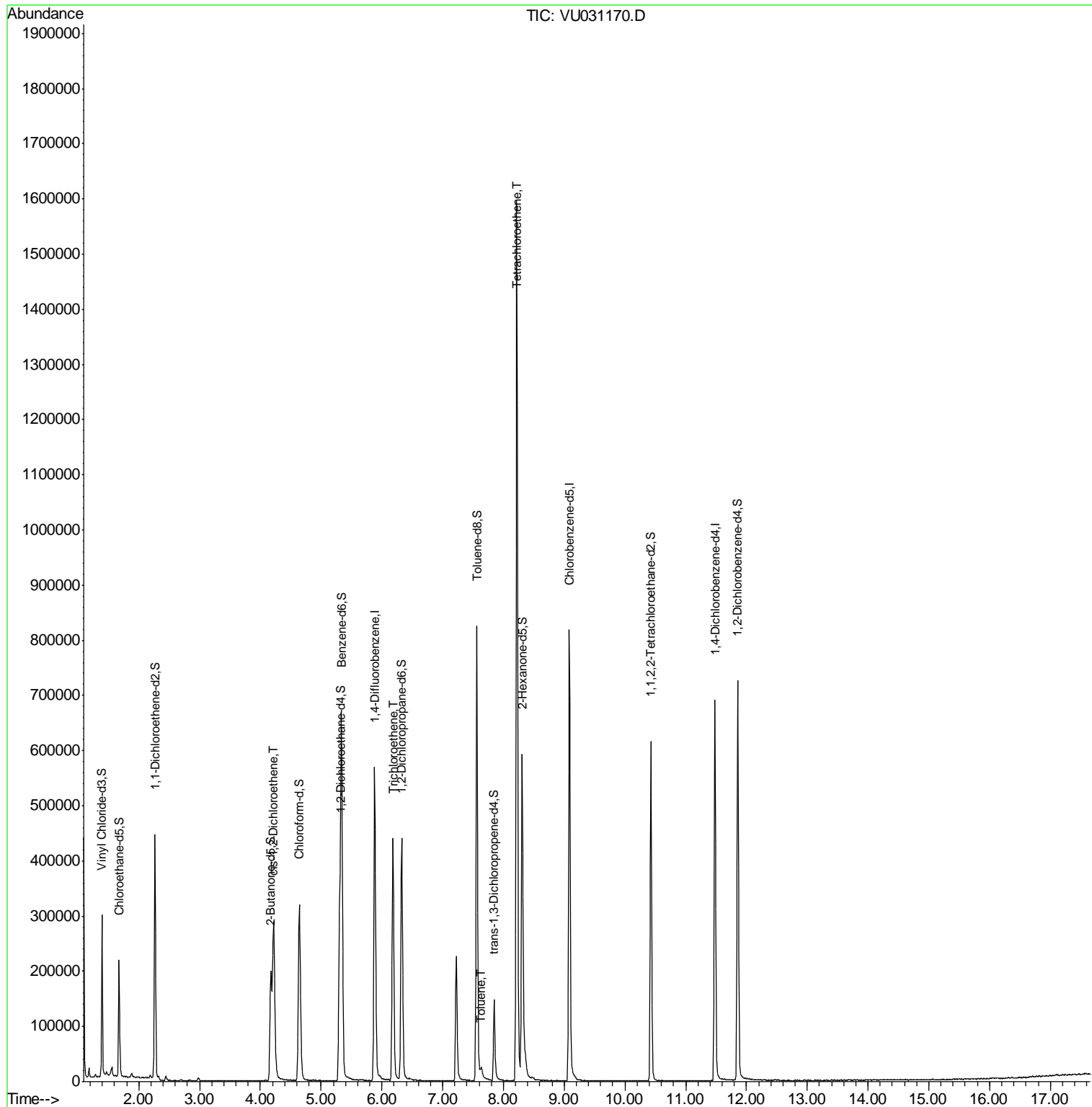
Target Compounds					Ovalue
20) cis-1,2-Dichloroethene	4.22	96	152172	39.360	ug/L 88
34) Trichloroethene	6.18	95	160573	43.031	ug/L 97
42) Toluene	7.64	91	12806	0.825	ug/L 93
46) Tetrachloroethene	8.22	164	366890	135.237	ug/L 98

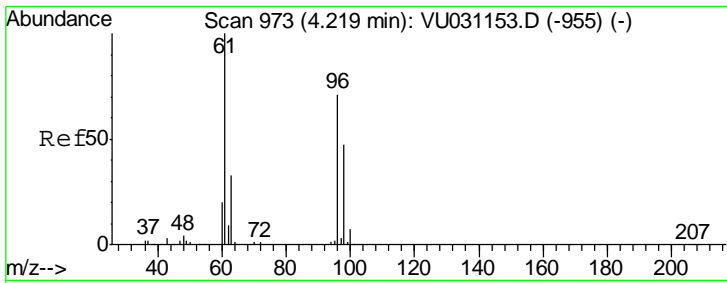
(#) = qualifier out of range (m) = manual integration (+) = signals summed

Data Path : Z:\VOASRV\HPCHEM1\MSVOA U\DATA\VU041319\
 Data File : VU031170.D
 Acq On : 13 Apr 2019 20:31
 Operator : JC/SP
 Sample : K2341-15 10X
 Misc : 5.0mL/MSVOA U/WATER
 ALS Vial : 20 Sample Multiplier: 1

Instrument :
 MSVOA_U
 ClientSampled :
 DB737

Quant Time: Apr 15 11:51:53 2019
 Quant Method : Z:\VOASRV\HPCHEM1\MSVOA_U\METHOD\SOMULM040519WMA.M
 Quant Title : VOC Analysis
 QLast Update : Sat Apr 13 22:25:59 2019
 Response via : Initial Calibration

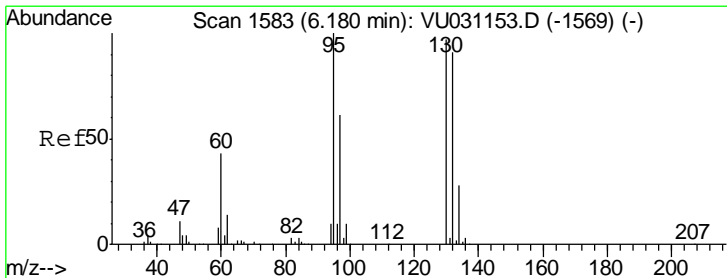
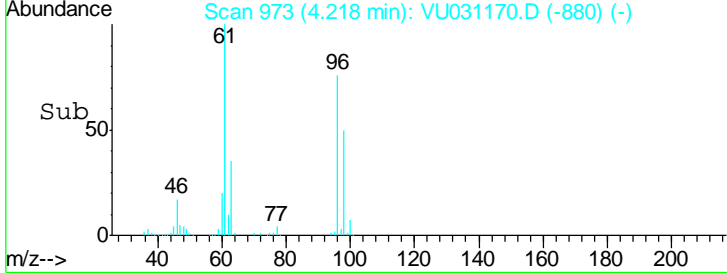
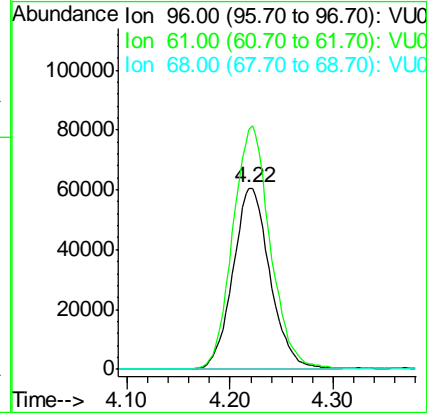
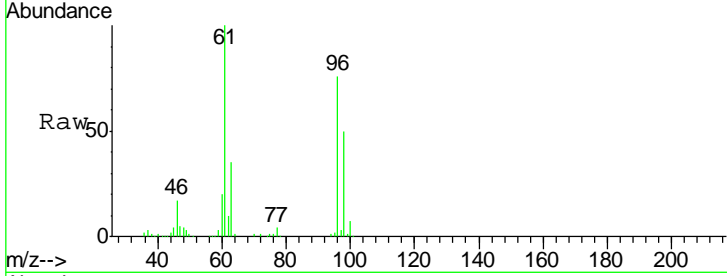




#20
 cis-1,2-Dichloroethene
 Concen: 39.360 ug/L
 RT: 4.22 min Scan# 973
 Delta R.T. -0.00 min
 Lab File: VU031170.D
 Acq: 13 Apr 2019 20:31

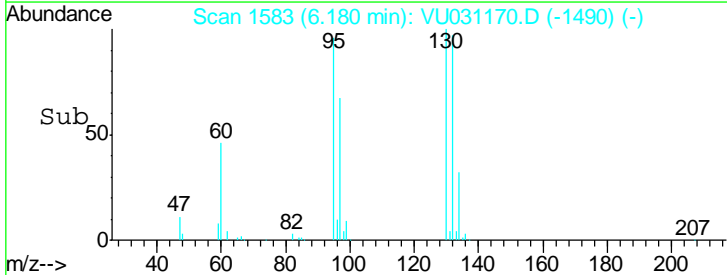
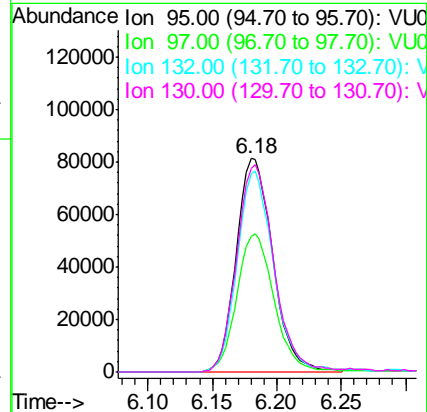
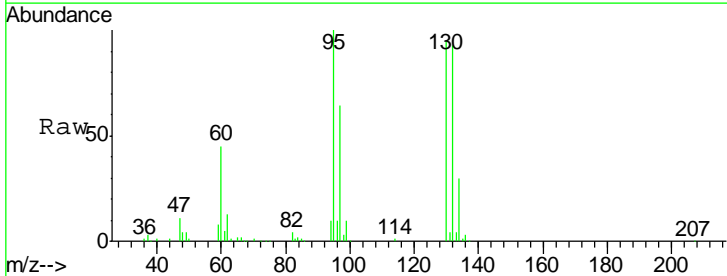
Instrument :
 MSVOA_U
 ClientSampleID :
 DB737

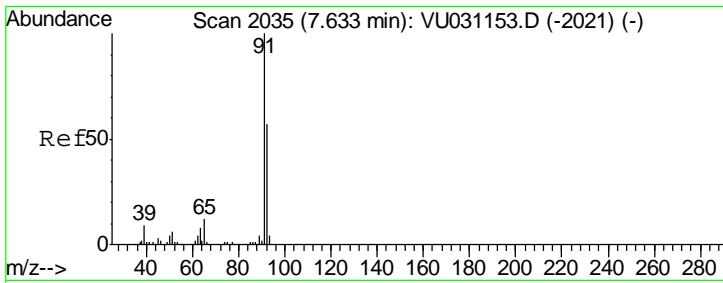
Tgt Ion	Resp	Lower	Upper
96	152172		
Ion Ratio			
96	100		
61	132.0	102.9	191.1
68	0.0	0.0	0.0



#34
 Trichloroethene
 Concen: 43.031 ug/L
 RT: 6.18 min Scan# 1583
 Delta R.T. -0.00 min
 Lab File: VU031170.D
 Acq: 13 Apr 2019 20:31

Tgt Ion	Resp	Lower	Upper
95	160573		
Ion Ratio			
95	100		
97	63.8	44.5	82.7
132	92.7	61.5	114.1
130	95.2	64.9	120.5

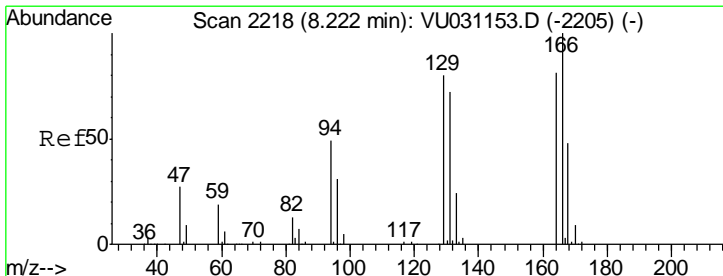
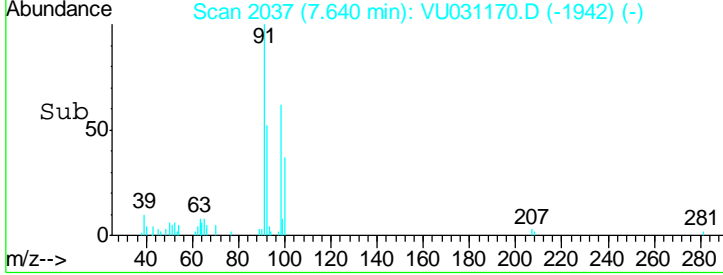
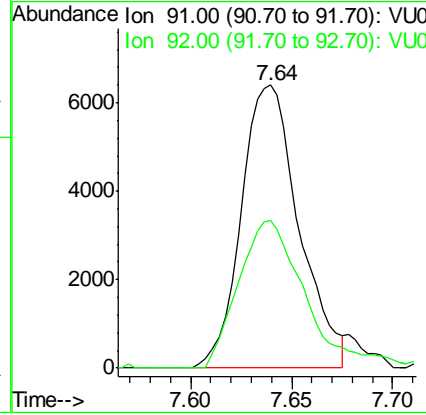
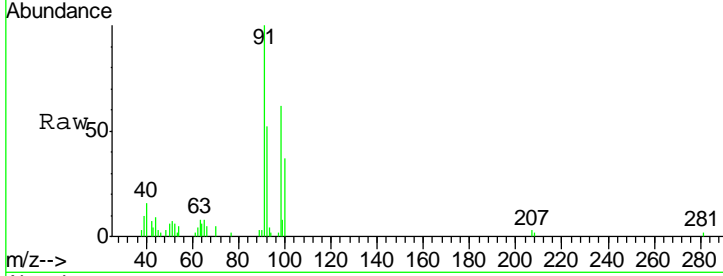




#42
 Toluene
 Concen: 0.825 ug/L
 RT: 7.64 min Scan# 2037
 Delta R.T. 0.01 min
 Lab File: VU031170.D
 Acq: 13 Apr 2019 20:31

Instrument : MSVOA_U
 ClientSampled : DB737

Tgt Ion	Resp	Lower	Upper
91	12806		
92	52.3	40.0	74.4



#46
 Tetrachloroethene
 Concen: 135.237 ug/L
 RT: 8.22 min Scan# 2218
 Delta R.T. -0.00 min
 Lab File: VU031170.D
 Acq: 13 Apr 2019 20:31

Tgt Ion	Resp	Lower	Upper
164	366890		
164	100		
129	93.8	67.4	125.2
131	92.8	65.9	122.5
166	124.0	88.6	164.6

