

Data Path : Z:\voasrv\HPCHEM1\MSVOA\_U\Data\VU041321\  
 Data File : VU043077.D  
 Acq On : 14 Apr 2021 01:47  
 Operator : SY/MD  
 Sample : M1966-02  
 Misc : 5.0mL/MSVOA\_U/WATER  
 ALS Vial : 42 Sample Multiplier: 1

Instrument :  
 MSVOA\_U  
 ClientSampleId :  
 MW-119

Integration Parameters: RTEINT.P  
 Integrator: RTE  
 Smoothing : ON Filtering: 5  
 Sampling : 1 Min Area: 3 % of largest Peak  
 Start Thrs: 0.2 Max Peaks: 100  
 Stop Thrs : 0 Peak Location: TOP

If leading or trailing edge < 100 prefer < Baseline drop else tangent >  
 Peak separation: 5

Method : Z:\voasrv\HPCHEM1\MSVOA\_U\Method\82U041221W.M  
 Title : SW846 8260

Signal : TIC: VU043077.D\data.ms

peak #	R.T. min	first scan	max scan	last scan	PK TY	peak height	corr. area	corr. % max.	% of total
1	1.491	39	47	60	rBV2	10557	22923	2.91%	0.536%
2	2.639	393	404	416	rBV	4345	7975	1.01%	0.186%
3	5.298	1213	1231	1244	rBV	127135	271263	34.38%	6.339%
4	5.382	1244	1257	1275	rVB	198464	403655	51.16%	9.433%
5	5.710	1344	1359	1385	rBV2	142887	289210	36.66%	6.758%
6	6.256	1515	1529	1549	rBV	297675	554144	70.24%	12.950%
7	7.906	2027	2042	2064	rBV	456433	788981	100.00%	18.437%
8	9.423	2502	2514	2534	rBV	424554	694039	87.97%	16.219%
9	10.639	2880	2892	2918	rBV	357423	564172	71.51%	13.184%
10	11.819	3247	3259	3277	rBV	435146	682859	86.55%	15.958%

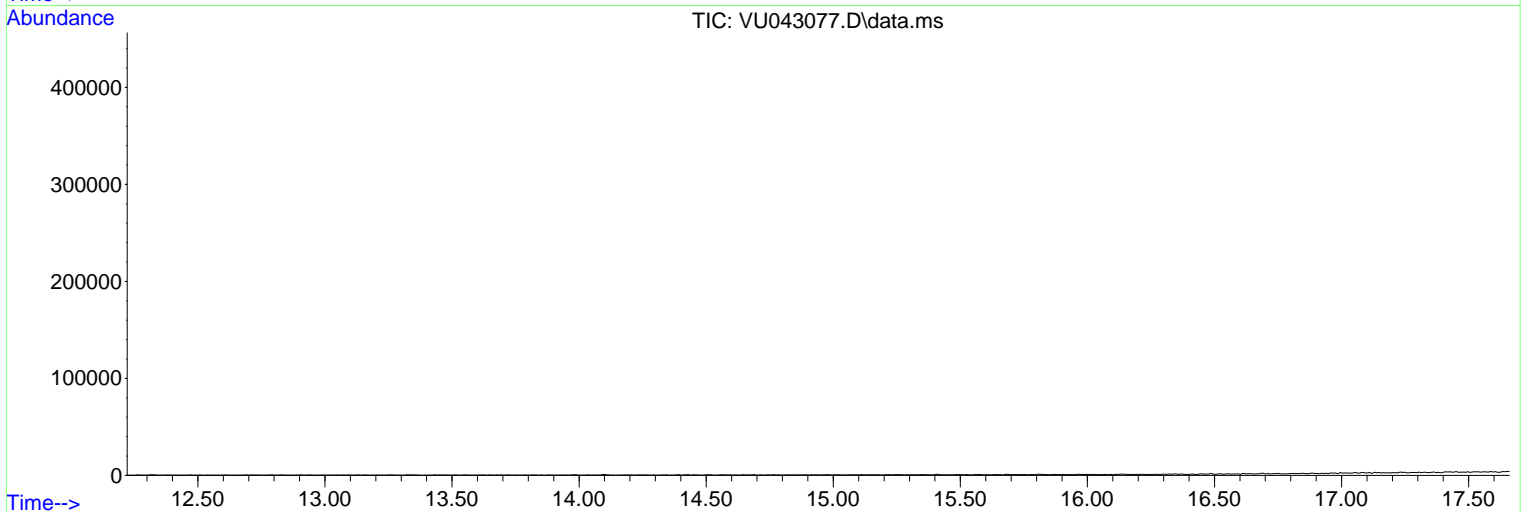
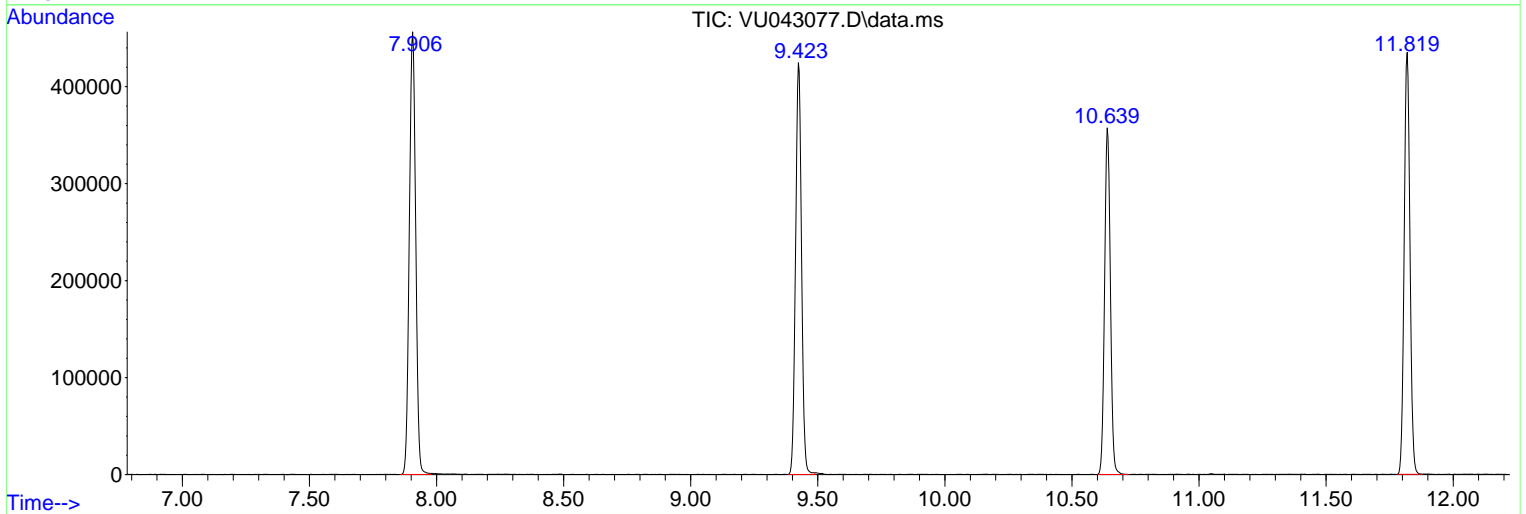
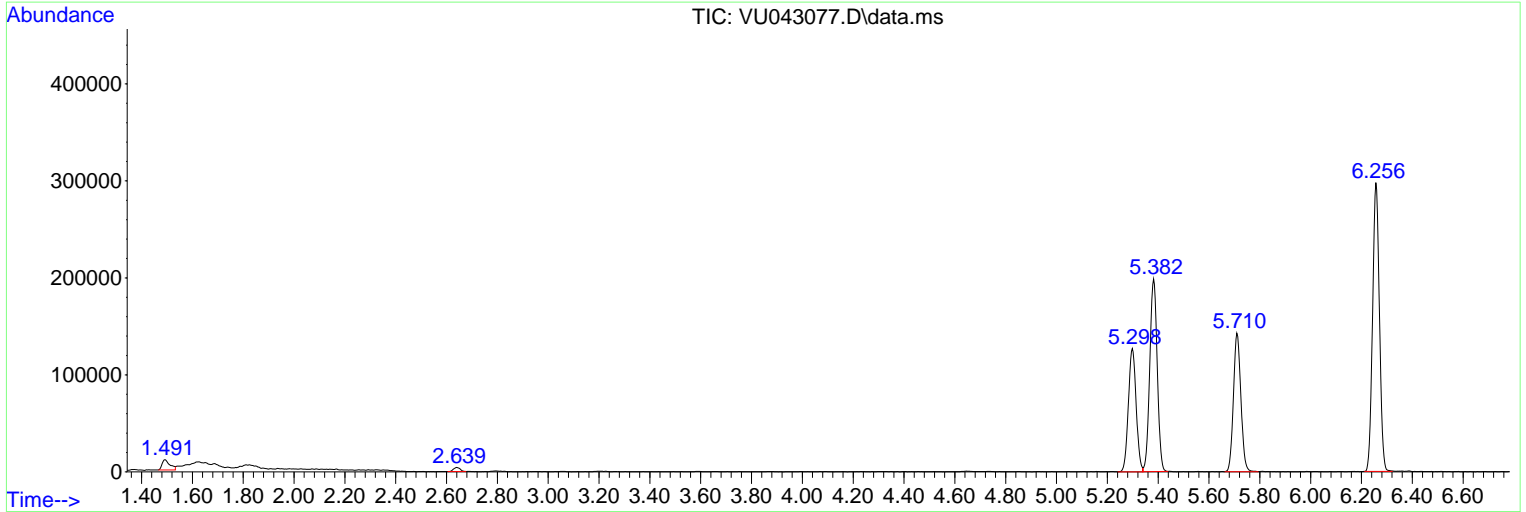
Sum of corrected areas: 4279221

Data Path : Z:\voasrv\HPCHEM1\MSVOA\_U\Data\VU041321\  
 Data File : VU043077.D  
 Acq On : 14 Apr 2021 01:47  
 Operator : SY/MD  
 Sample : M1966-02  
 Misc : 5.0mL/MSVOA\_U/WATER  
 ALS Vial : 42 Sample Multiplier: 1

Instrument :  
 MSVOA\_U  
 ClientSampled :  
 MW-119

Quant Method : Z:\voasrv\HPCHEM1\MSVOA\_U\Method\82U041221W.M  
 Quant Title : SW846 8260

TIC Library : C:\DATABASE\NIST11.L  
 TIC Integration Parameters: LSCINT.P



Library Search Compound Report

Data Path : Z:\voasrv\HPCHEM1\MSVOA\_U\Data\VU041321\  
Data File : VU043077.D  
Acq On : 14 Apr 2021 01:47  
Operator : SY/MD  
Sample : M1966-02  
Misc : 5.0mL/MSVOA\_U/WATER  
ALS Vial : 42 Sample Multiplier: 1

Instrument :  
MSVOA\_U  
ClientSampleId :  
MW-119

Quant Method : Z:\voasrv\HPCHEM1\MSVOA\_U\Method\82U041221W.M  
Quant Title : SW846 8260

TIC Library : C:\DATABASE\NIST11.L  
TIC Integration Parameters: LSCINT.P

No Library Search Compounds Detected

\*\*\*\*\*

Data Path : Z:\voasrv\HPCHEM1\MSVOA\_U\Data\VU041321\  
Data File : VU043077.D  
Acq On : 14 Apr 2021 01:47  
Operator : SY/MD  
Sample : M1966-02  
Misc : 5.0mL/MSVOA\_U/WATER  
ALS Vial : 42 Sample Multiplier: 1

Instrument :  
MSVOA\_U  
ClientSampled :  
MW-119

Quant Method : Z:\voasrv\HPCHEM1\MSVOA\_U\Method\82U041221W.M  
Quant Title : SW846 8260

TIC Library : C:\DATABASE\NIST11.L  
TIC Integration Parameters: LSCINT.P

TIC Top Hit name	RT	EstConc	Units	Response	--Internal Standard--		
					#	RT	Resp Conc

---