

Data Path : Z:\voasrv\HPCHEM1\MSVOA\_U\Data\VU041423\  
 Data File : VU053727.D  
 Acq On : 14 Apr 2023 20:18  
 Operator : JC/MD  
 Sample : 02299-02DL 400X  
 Misc : 25.0mL/MSVOA\_U/WATER  
 ALS Vial : 26 Sample Multiplier: 1

Instrument :  
 MSVOA\_U  
 ClientSampleId :  
 VSTD005150

Quant Time: Apr 15 05:35:42 2023  
 Quant Method : Z:\voasrv\HPCHEM1\MSVOA\_U\Method\SFAMUTR032423WMA.M  
 Quant Title : TRACE VOA SFAM1.0  
 QLast Update : Sat Apr 15 05:28:57 2023  
 Response via : Initial Calibration

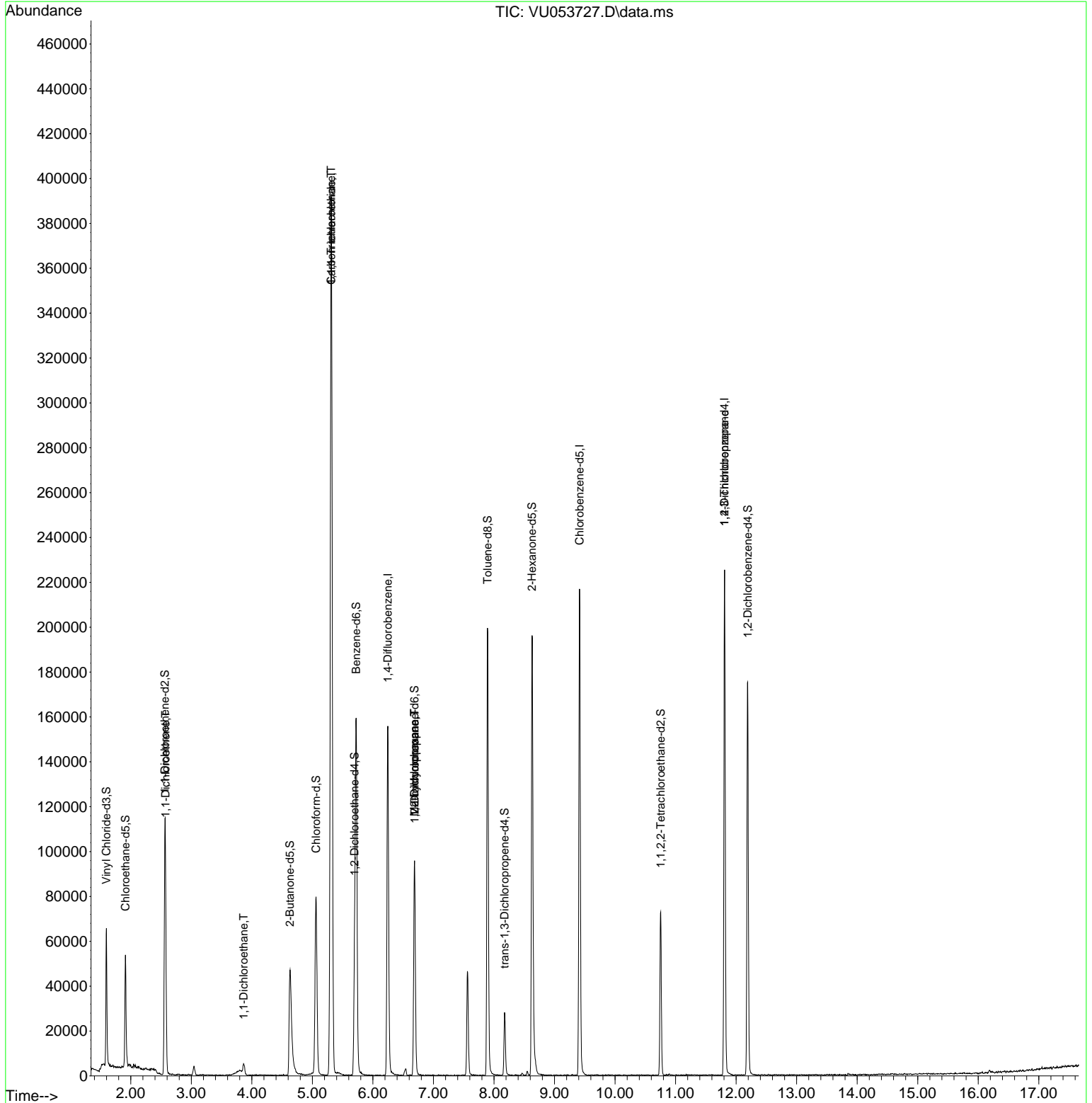
Compound	R.T.	QIon	Response	Conc	Units	Dev(Min)
Internal Standards						
1) 1,4-Difluorobenzene	6.247	114	134958	5.000	ug/L	0.00
28) Chlorobenzene-d5	9.414	117	128409	5.000	ug/L	0.00
58) 1,4-Dichlorobenzene-d4	11.809	152	61372	5.000	ug/L	0.00
System Monitoring Compounds						
4) Vinyl Chloride-d3	1.597	65	47015	5.064	ug/L	0.00
Spiked Amount	5.000	Range 40 - 130	Recovery	=	101.200%	
7) Chloroethane-d5	1.912	69	38076	4.519	ug/L	0.00
Spiked Amount	5.000	Range 65 - 130	Recovery	=	90.400%	
11) 1,1-Dichloroethene-d2	2.562	65	16883	4.269	ug/L	0.00
Spiked Amount	5.000	Range 60 - 125	Recovery	=	85.400%	
20) 2-Butanone-d5	4.629	46	86062	40.464	ug/L	0.00
Spiked Amount	50.000	Range 40 - 130	Recovery	=	80.920%	
24) Chloroform-d	5.060	84	75028	4.359	ug/L	0.00
Spiked Amount	5.000	Range 70 - 125	Recovery	=	87.200%	
26) 1,2-Dichloroethane-d4	5.697	65	37539	4.256	ug/L	0.00
Spiked Amount	5.000	Range 70 - 130	Recovery	=	85.200%	
32) Benzene-d6	5.723	84	154746	4.252	ug/L	0.00
Spiked Amount	5.000	Range 70 - 125	Recovery	=	85.000%	
36) 1,2-Dichloropropane-d6	6.687	67	48105	4.338	ug/L	0.00
Spiked Amount	5.000	Range 60 - 140	Recovery	=	86.800%	
41) Toluene-d8	7.893	98	139394	4.060	ug/L	0.00
Spiked Amount	5.000	Range 70 - 130	Recovery	=	81.200%	
43) trans-1,3-Dichloroprop...	8.176	79	17146	4.029	ug/L	0.00
Spiked Amount	5.000	Range 55 - 130	Recovery	=	80.600%	
46) 2-Hexanone-d5	8.629	63	69600	40.268	ug/L	0.00
Spiked Amount	50.000	Range 45 - 130	Recovery	=	80.540%	
56) 1,1,2,2-Tetrachloroeth...	10.755	84	36212	3.923	ug/L	0.00
Spiked Amount	5.000	Range 65 - 120	Recovery	=	78.400%	
66) 1,2-Dichlorobenzene-d4	12.192	152	47841	4.333	ug/L	0.00
Spiked Amount	5.000	Range 80 - 120	Recovery	=	86.600%	
Target Compounds						
12) 1,1-Dichloroethene	2.575	96	15192	1.988	ug/L #	55
19) 1,1-Dichloroethane	3.864	63	6168	0.422	ug/L #	95
29) 1,1,1-Trichloroethane	5.311	97	290846	22.943	ug/L	96
31) Carbon tetrachloride	5.311	117	39326	3.666	ug/L	96
35) Methylcyclohexane	6.687	83	10714	0.681	ug/L #	22
37) 1,2-Dichloropropane	6.690	63	4788	0.527	ug/L #	89
61) 1,2,3-Trichloropropane	11.809	75	7120	1.400	ug/L #	64

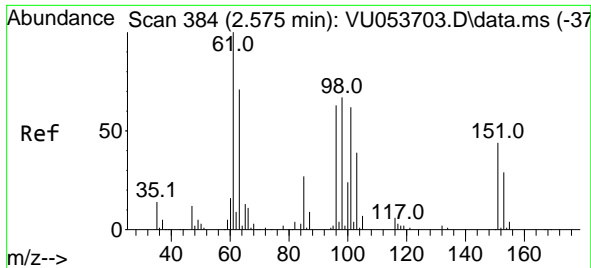
(#) = qualifier out of range (m) = manual integration (+) = signals summed

Data Path : Z:\voasrv\HPCHEM1\MSVOA\_U\Data\VU041423\  
 Data File : VU053727.D  
 Acq On : 14 Apr 2023 20:18  
 Operator : JC/MD  
 Sample : 02299-02DL 400X  
 Misc : 25.0mL/MSVOA\_U/WATER  
 ALS Vial : 26 Sample Multiplier: 1

Instrument :  
 MSVOA\_U  
 ClientSampleId :  
 VSTD005150

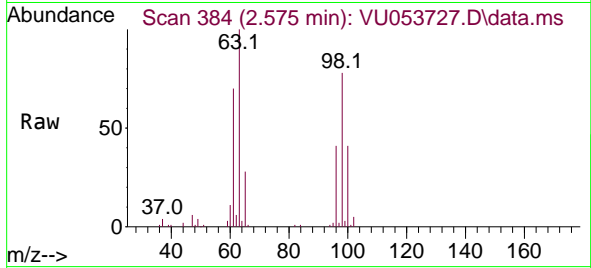
Quant Time: Apr 15 05:35:42 2023  
 Quant Method : Z:\voasrv\HPCHEM1\MSVOA\_U\Method\SFAMUTR032423WMA.M  
 Quant Title : TRACE VOA SFAM1.0  
 QLast Update : Sat Apr 15 05:28:57 2023  
 Response via : Initial Calibration



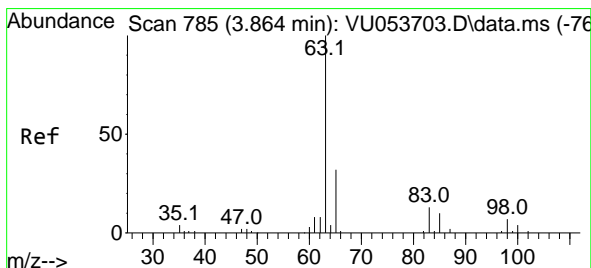
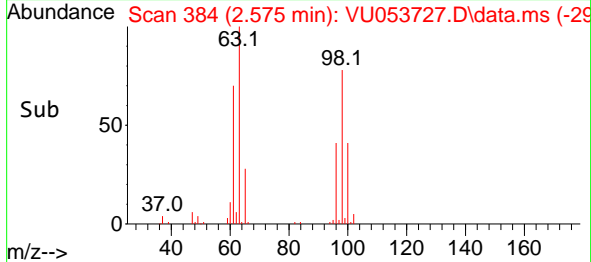
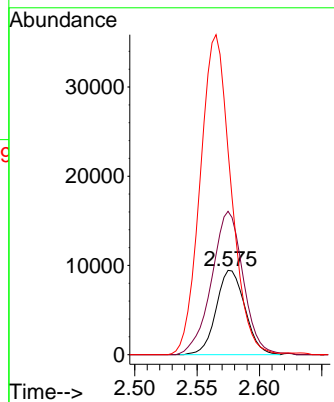


#12  
 1,1-Dichloroethene  
 Concen: 1.988 ug/L  
 RT: 2.575 min Scan# 384  
 Delta R.T. -0.000 min  
 Lab File: VU053727.D  
 Acq: 14 Apr 2023 20:18

Instrument : MSVOA\_U  
 ClientSampleId : VSTD005150

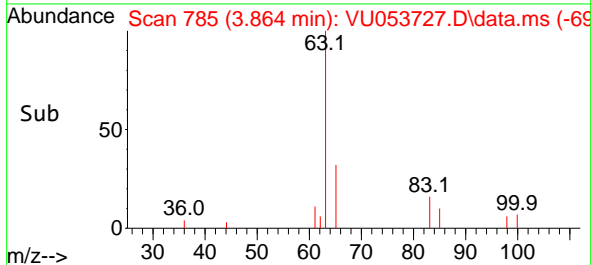
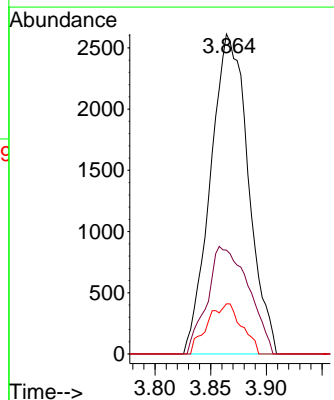
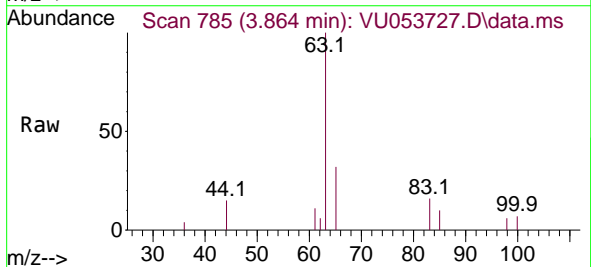


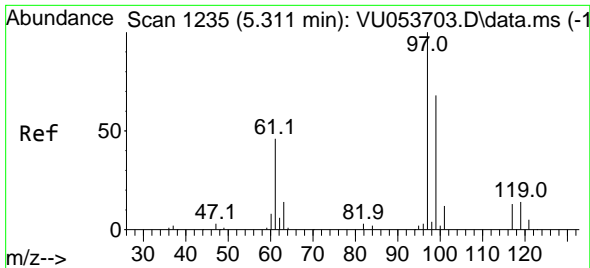
Tgt Ion: 96 Resp: 15192  
 Ion Ratio Lower Upper  
 96 100  
 61 170.2 116.8 216.8  
 63 242.3 88.6 164.6#



#19  
 1,1-Dichloroethane  
 Concen: 0.422 ug/L  
 RT: 3.864 min Scan# 785  
 Delta R.T. -0.000 min  
 Lab File: VU053727.D  
 Acq: 14 Apr 2023 20:18

Tgt Ion: 63 Resp: 6168  
 Ion Ratio Lower Upper  
 63 100  
 65 32.5 21.7 40.3  
 83 15.7 8.1 15.1#



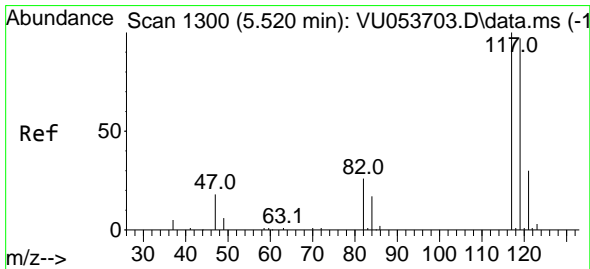
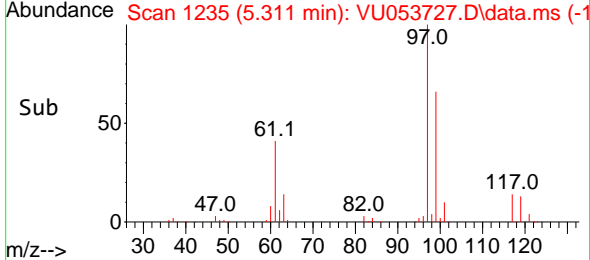
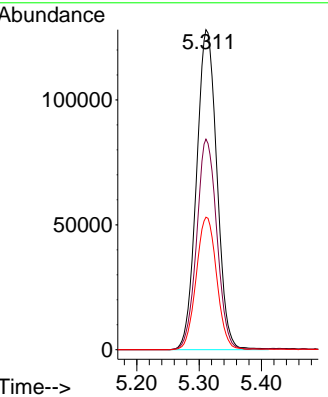
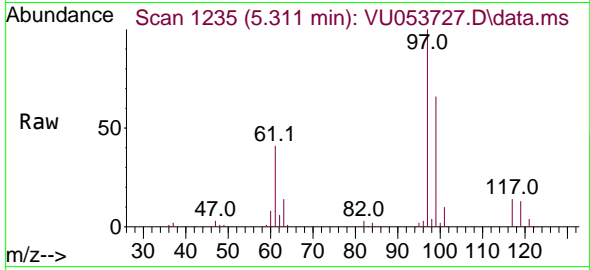


#29  
 1,1,1-Trichloroethane  
 Concen: 22.943 ug/L  
 RT: 5.311 min Scan# 1235  
 Delta R.T. -0.000 min  
 Lab File: VU053727.D  
 Acq: 14 Apr 2023 20:18

Instrument : MSVOA\_U  
 ClientSampleId : VSTD005150

Tgt Ion: 97 Resp: 290846

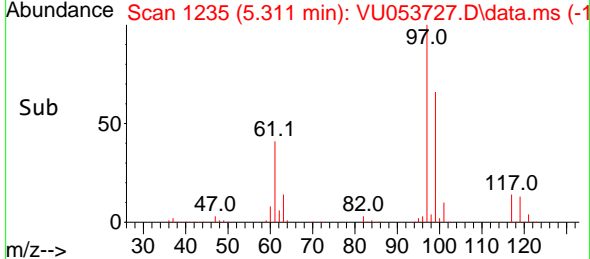
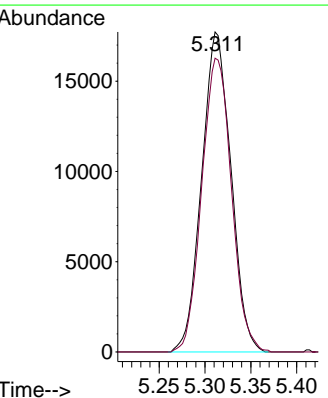
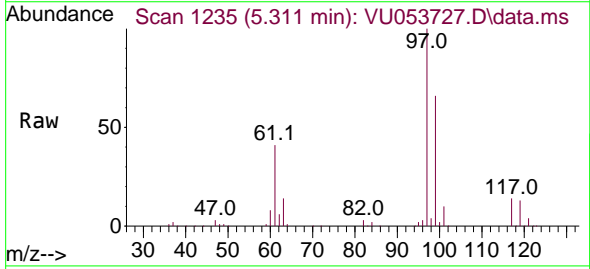
Ion	Ratio	Lower	Upper
97	100		
99	65.1	49.9	74.9
61	41.6	35.7	53.5

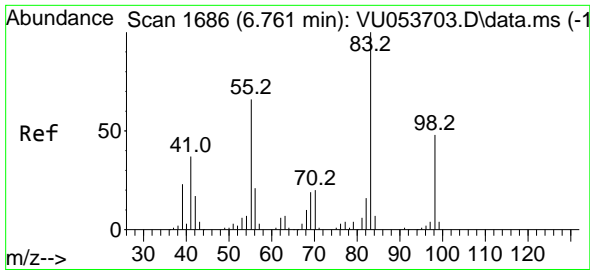


#31  
 Carbon tetrachloride  
 Concen: 3.666 ug/L  
 RT: 5.311 min Scan# 1235  
 Delta R.T. -0.209 min  
 Lab File: VU053727.D  
 Acq: 14 Apr 2023 20:18

Tgt Ion: 117 Resp: 39326

Ion	Ratio	Lower	Upper
117	100		
119	93.2	77.7	116.5

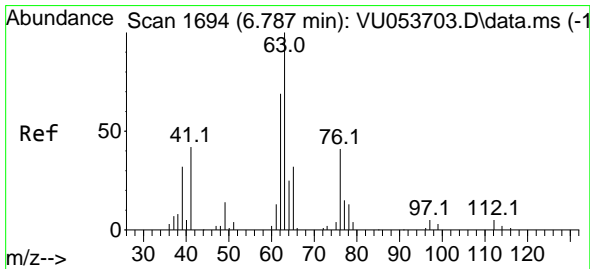
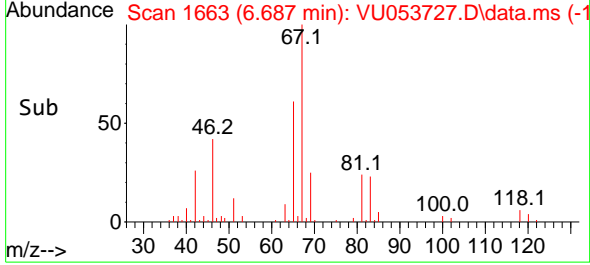
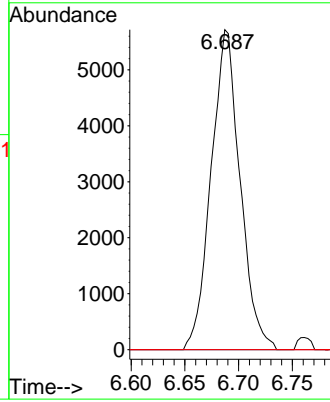
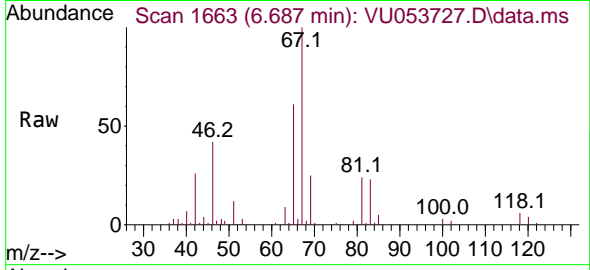




#35  
 Methylcyclohexane  
 Concen: 0.681 ug/L  
 RT: 6.687 min Scan# 1663  
 Delta R.T. -0.074 min  
 Lab File: VU053727.D  
 Acq: 14 Apr 2023 20:18

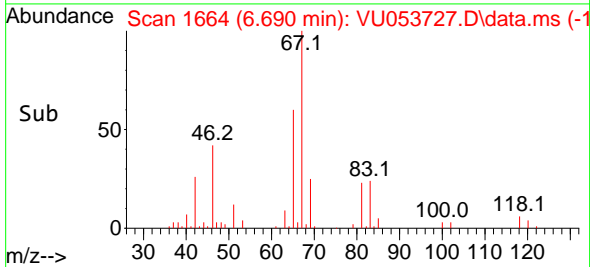
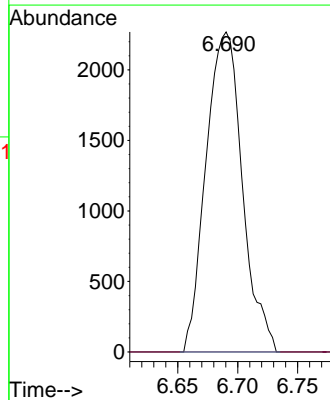
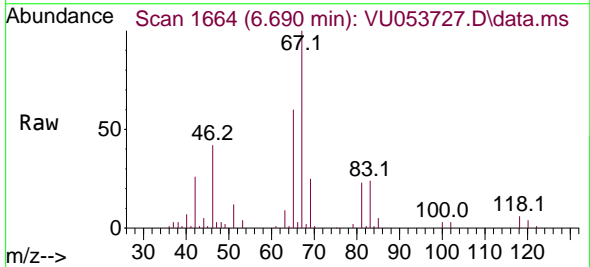
Instrument : MSVOA\_U  
 ClientSampleId : VSTD005150

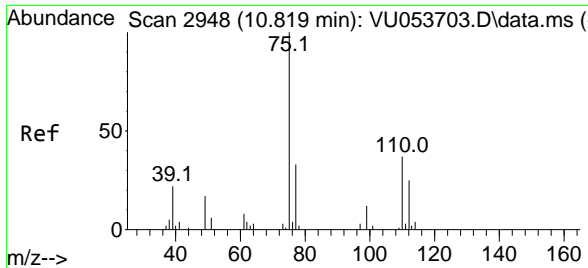
Tgt Ion	Resp	Lower	Upper
83	10714		
55	0.0	54.9	82.3#
98	0.5	34.9	52.3#



#37  
 1,2-Dichloropropane  
 Concen: 0.527 ug/L  
 RT: 6.690 min Scan# 1664  
 Delta R.T. -0.096 min  
 Lab File: VU053727.D  
 Acq: 14 Apr 2023 20:18

Tgt Ion	Resp	Lower	Upper
63	4788		
112	0.0	3.0	4.4#





#61  
 1,2,3-Trichloropropane  
 Concen: 1.400 ug/L  
 RT: 11.809 min Scan# 31  
 Delta R.T. 0.990 min  
 Lab File: VU053727.D  
 Acq: 14 Apr 2023 20:18

Instrument : MSVOA\_U  
 ClientSampleId : VSTD005150

Tgt Ion	Resp	Ion Ratio	Lower	Upper
75	7120	100		
110		1.4	30.6	46.0#
77		36.3	26.1	39.1

