

Data Path : Z:\voasrv\HPCHEM1\MSVOA_U\Data\VU041521\
 Data File : VU043143.D
 Acq On : 16 Apr 2021 00:34
 Operator : SY/MD
 Sample : M2055-09
 Misc : 25.0mL/MSVOA_U/WATER
 ALS Vial : 37 Sample Multiplier: 1

Instrument :
 MSVOA_U
 ClientSampled :

Quant Time: Apr 16 07:17:03 2021
 Quant Method : Z:\voasrv\HPCHEM1\MSVOA_U\Method\SFAMUTR041521WMA.M
 Quant Title : TRACE VOA SFAM1.0
 QLast Update : Fri Apr 16 07:14:05 2021
 Response via : Initial Calibration

Compound	R.T.	QIon	Response	Conc	Units	Dev(Min)
Internal Standards						
1) 1,4-Difluorobenzene	6.256	114	63385	5.00	ug/L	# 0.00
28) Chlorobenzene-d5	9.427	117	63710	5.00	ug/L	0.00
58) 1,4-Dichlorobenzene-d4	11.819	152	29876	5.00	ug/L	0.00
System Monitoring Compounds						
4) Vinyl Chloride-d3	1.604	65	17394	5.40	ug/L	0.00
Spiked Amount	5.000	Range 40 - 130	Recovery	=	108.00%	
7) Chloroethane-d5	1.919	69	16377	5.39	ug/L	0.00
Spiked Amount	5.000	Range 65 - 130	Recovery	=	107.80%	
11) 1,1-Dichloroethene-d2	2.575	65	10777	5.78	ug/L	0.00
Spiked Amount	5.000	Range 60 - 125	Recovery	=	115.60%	
20) 2-Butanone-d5	4.649	46	71731	50.74	ug/L	0.00
Spiked Amount	50.000	Range 40 - 130	Recovery	=	101.48%	
24) Chloroform-d	5.073	84	46361	5.66	ug/L	0.00
Spiked Amount	5.000	Range 70 - 125	Recovery	=	113.20%	
26) 1,2-Dichloroethane-d4	5.713	65	31616	5.70	ug/L	0.00
Spiked Amount	5.000	Range 70 - 130	Recovery	=	114.00%	
32) Benzene-d6	5.735	84	84453	5.69	ug/L	0.00
Spiked Amount	5.000	Range 70 - 125	Recovery	=	113.80%	
36) 1,2-Dichloropropane-d6	6.700	67	28655	5.82	ug/L	0.00
Spiked Amount	5.000	Range 60 - 140	Recovery	=	116.40%	
41) Toluene-d8	7.906	98	76909	4.99	ug/L	0.00
Spiked Amount	5.000	Range 70 - 130	Recovery	=	99.80%	
43) trans-1,3-Dichloroprop...	8.189	79	11421	5.26	ug/L	0.00
Spiked Amount	5.000	Range 55 - 130	Recovery	=	105.20%	
46) 2-Hexanone-d5	8.645	63	67417	62.22	ug/L	0.00
Spiked Amount	50.000	Range 45 - 130	Recovery	=	124.44%	
56) 1,1,2,2-Tetrachloroeth...	10.764	84	26175	6.05	ug/L	0.00
Spiked Amount	5.000	Range 65 - 120	Recovery	=	121.00%#	
66) 1,2-Dichlorobenzene-d4	12.201	152	30472	5.95	ug/L	0.00
Spiked Amount	5.000	Range 80 - 120	Recovery	=	119.00%	
Target Compounds						
2) Dichlorodifluoromethane	1.392	85	686	0.17	ug/L	# 72
3) Chloromethane	1.523	50	326	0.08	ug/L	# 71
10) 1,1,2-Trichloro-1,2,2-...	2.572	101	461	0.11	ug/L	# 28
12) 1,1-Dichloroethene	2.578	96	331	0.09	ug/L	# 1
13) Acetone	2.668	43	1850	1.78	ug/L	91
17) Methyl tert-butyl Ether	3.375	73	4545	0.39	ug/L	93
19) 1,1-Dichloroethane	3.883	63	884	0.11	ug/L	# 82
22) cis-1,2-Dichloroethene	4.678	96	4196	0.94	ug/L	84
25) Chloroform	5.092	83	3750	0.43	ug/L	94
34) Trichloroethene	6.552	95	870	0.19	ug/L	89
35) Methylcyclohexane	6.700	83	6586	1.01	ug/L	# 19
37) 1,2-Dichloropropane	6.700	63	3513	0.73	ug/L	# 87
39) cis-1,3-Dichloropropene	7.578	75	799	0.11	ug/L	# 57
47) Tetrachloroethene	8.562	164	1864	0.50	ug/L	79
48) 2-Hexanone	8.649	43	10935	3.46	ug/L	# 63
49) Dibromochloromethane	8.562	129	1796	0.40	ug/L	# 9
61) 1,2,3-Trichloropropane	11.819	75	3885	1.26	ug/L	# 58

Data Path : Z:\voasrv\HPCHEM1\MSVOA_U\Data\VU041521\
Data File : VU043143.D
Acq On : 16 Apr 2021 00:34
Operator : SY/MD
Sample : M2055-09
Misc : 25.0mL/MSVOA_U/WATER
ALS Vial : 37 Sample Multiplier: 1

Instrument :
MSVOA_U
ClientSampled :

Quant Time: Apr 16 07:17:03 2021
Quant Method : Z:\voasrv\HPCHEM1\MSVOA_U\Method\SFAMUTR041521WMA.M
Quant Title : TRACE VOA SFAM1.0
QLast Update : Fri Apr 16 07:14:05 2021
Response via : Initial Calibration

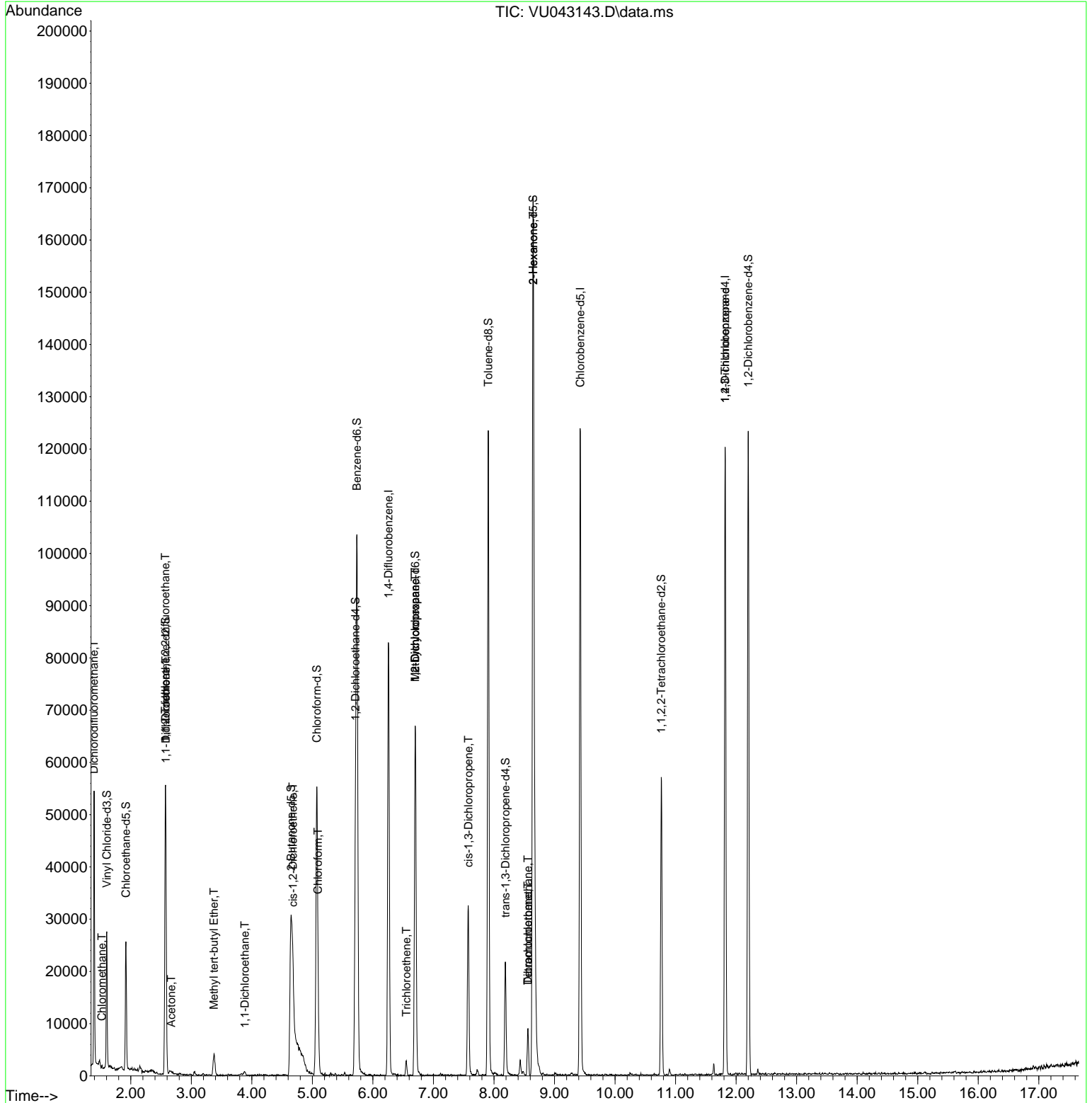
Compound	R.T.	QIon	Response	Conc	Units	Dev(Min)

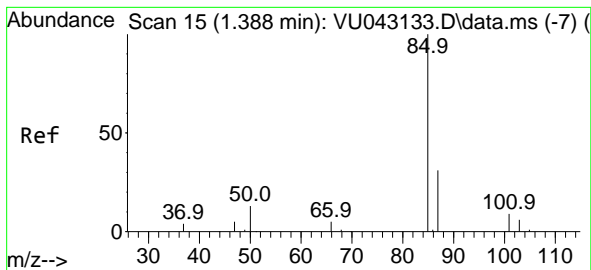
(#) = qualifier out of range (m) = manual integration (+) = signals summed						

Data Path : Z:\voasrv\HPCHEM1\MSVOA_U\Data\VU041521\
 Data File : VU043143.D
 Acq On : 16 Apr 2021 00:34
 Operator : SY/MD
 Sample : M2055-09
 Misc : 25.0mL/MSVOA_U/WATER
 ALS Vial : 37 Sample Multiplier: 1

Instrument :
 MSVOA_U
 ClientSampleId :

Quant Time: Apr 16 07:17:03 2021
 Quant Method : Z:\voasrv\HPCHEM1\MSVOA_U\Method\SFAMUTR041521WMA.M
 Quant Title : TRACE VOA SFAM1.0
 QLast Update : Fri Apr 16 07:14:05 2021
 Response via : Initial Calibration

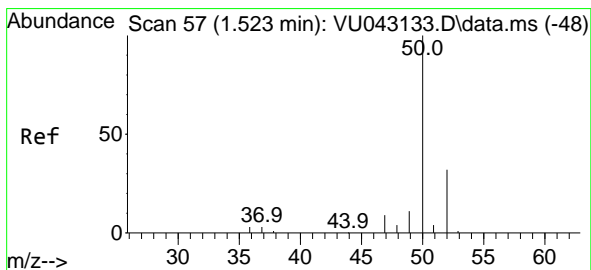
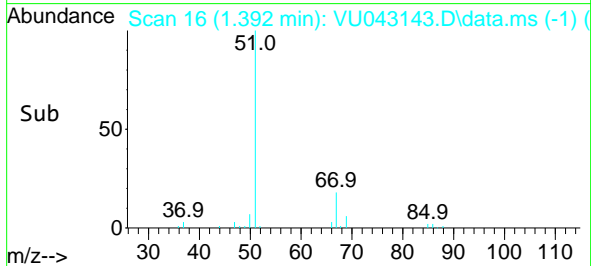
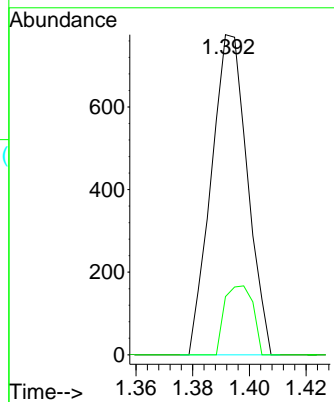
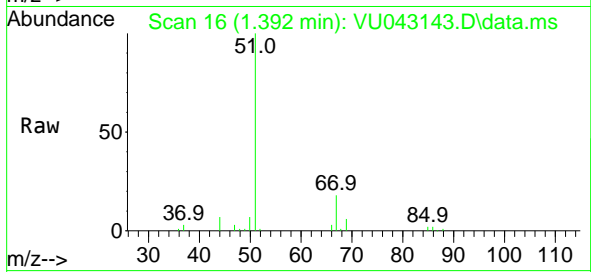




#2
 Dichlorodifluoromethane
 Concen: 0.17 ug/L
 RT: 1.392 min Scan# 16
 Delta R.T. 0.003 min
 Lab File: VU043143.D
 Acq: 16 Apr 2021 00:34

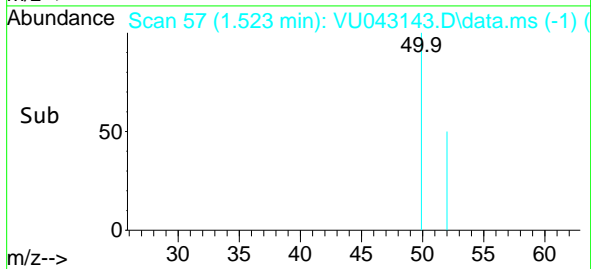
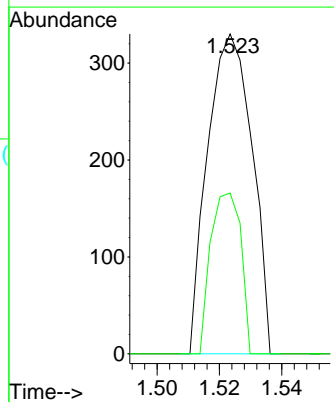
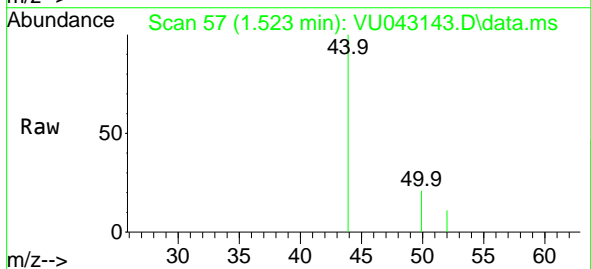
Instrument :
 MSVOA_U
 ClientSampled :

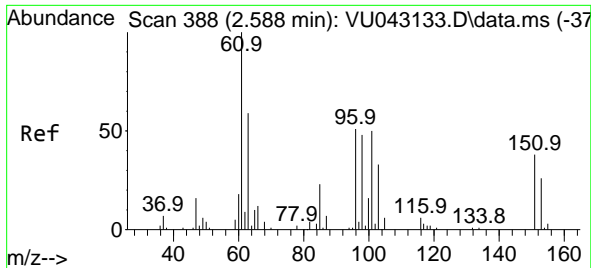
Tgt Ion: 85 Resp: 686
 Ion Ratio Lower Upper
 85 100
 87 16.9 26.3 39.5#



#3
 Chloromethane
 Concen: 0.08 ug/L
 RT: 1.523 min Scan# 57
 Delta R.T. 0.000 min
 Lab File: VU043143.D
 Acq: 16 Apr 2021 00:34

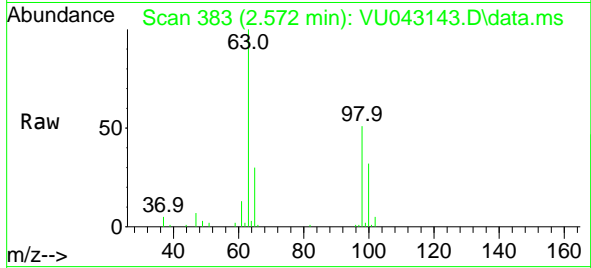
Tgt Ion: 50 Resp: 326
 Ion Ratio Lower Upper
 50 100
 52 50.3 23.6 43.8#



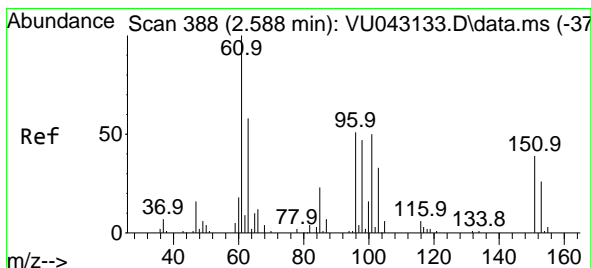
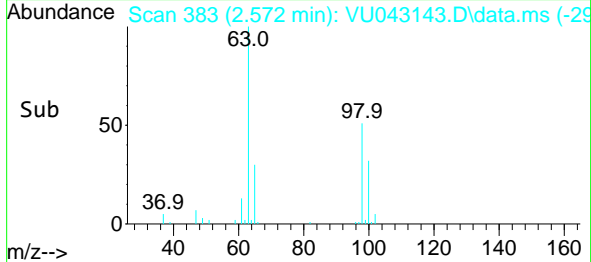
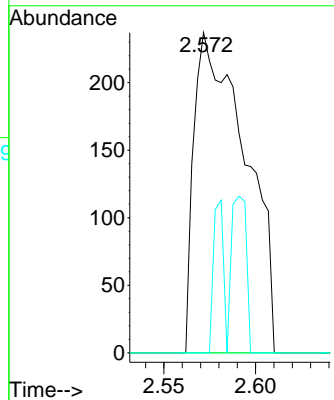


#10
 1,1,2-Trichloro-1,2,2-trifluoroethane
 Concen: 0.11 ug/L
 RT: 2.572 min Scan# 383
 Delta R.T. -0.016 min
 Lab File: VU043143.D
 Acq: 16 Apr 2021 00:34

Instrument :
 MSVOA_U
 ClientSampled :

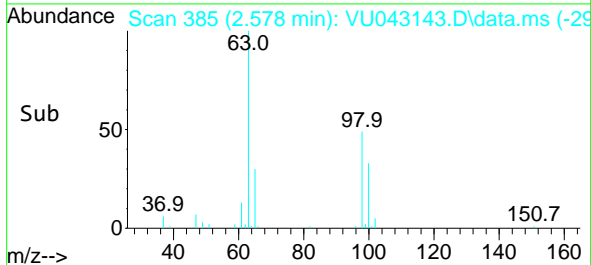
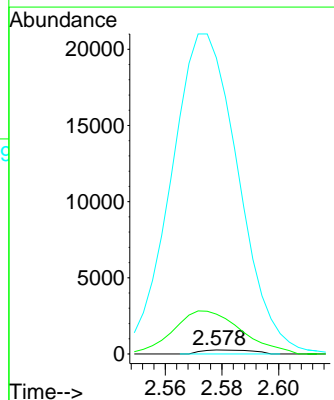
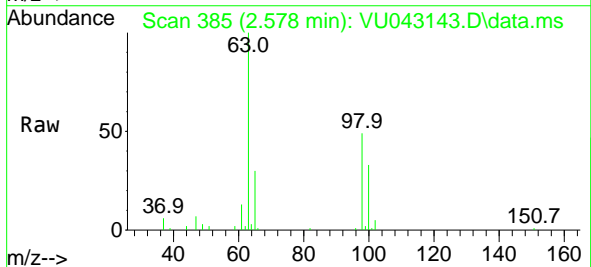


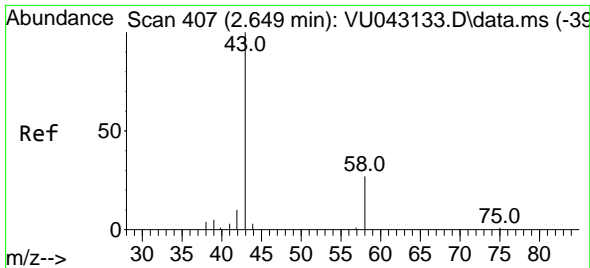
Tgt Ion:101 Resp: 461
 Ion Ratio Lower Upper
 101 100
 85 0.0 34.5 51.7#
 151 9.1 57.4 86.2#



#12
 1,1-Dichloroethene
 Concen: 0.09 ug/L
 RT: 2.578 min Scan# 385
 Delta R.T. -0.010 min
 Lab File: VU043143.D
 Acq: 16 Apr 2021 00:34

Tgt Ion: 96 Resp: 331
 Ion Ratio Lower Upper
 96 100
 61 986.4 115.1 213.7#
 63 7338.9 84.1 156.1#

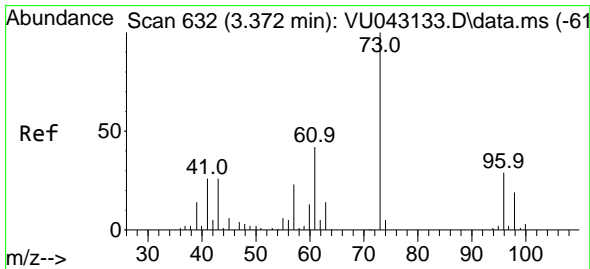
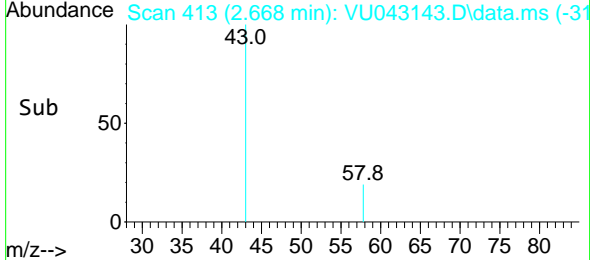
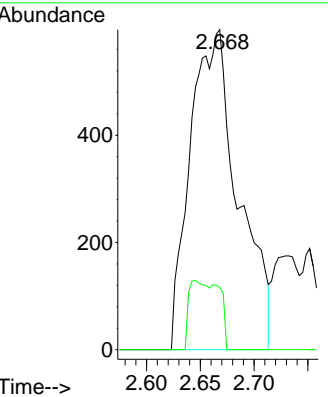
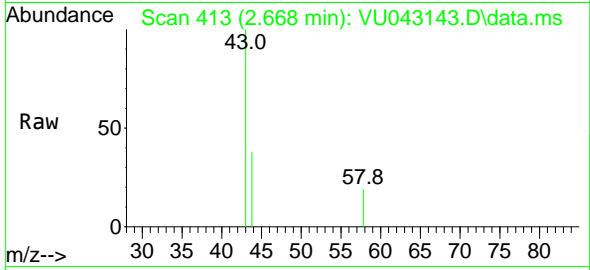




#13
 Acetone
 Concen: 1.78 ug/L
 RT: 2.668 min Scan# 413
 Delta R.T. 0.019 min
 Lab File: VU043143.D
 Acq: 16 Apr 2021 00:34

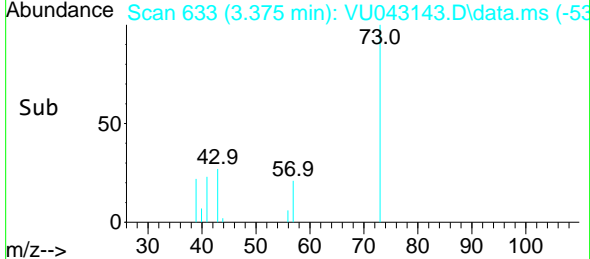
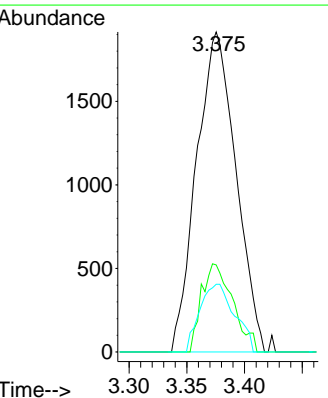
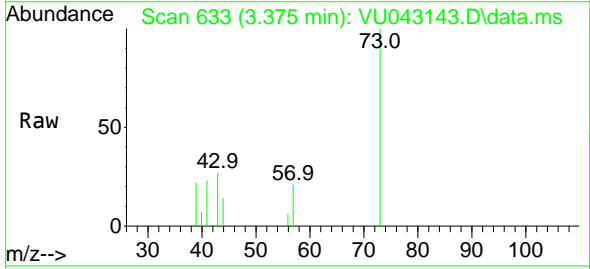
Instrument :
 MSVOA_U
 ClientSampled :

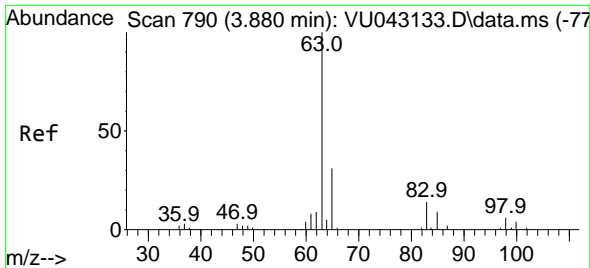
Tgt Ion	Resp	Lower	Upper
43	1850		
58	8.8	0.0	25.0



#17
 Methyl tert-butyl Ether
 Concen: 0.39 ug/L
 RT: 3.375 min Scan# 633
 Delta R.T. 0.003 min
 Lab File: VU043143.D
 Acq: 16 Apr 2021 00:34

Tgt Ion	Resp	Lower	Upper
73	4545		
43	21.8	15.0	22.4
57	18.7	17.3	25.9

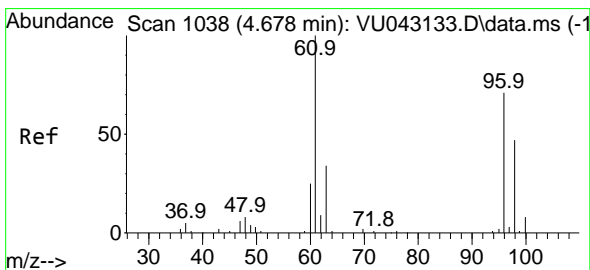
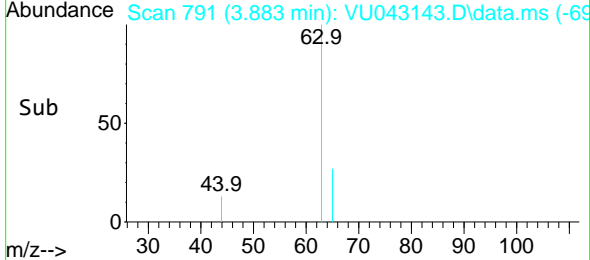
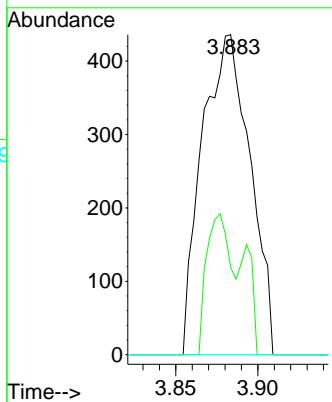
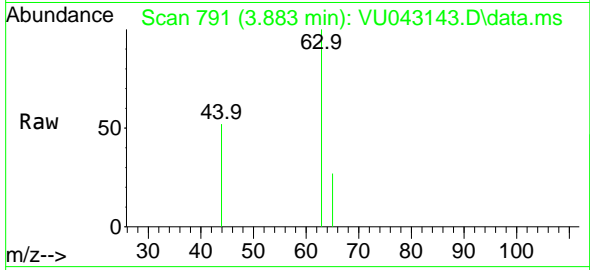




#19
 1,1-Dichloroethane
 Concen: 0.11 ug/L
 RT: 3.883 min Scan# 791
 Delta R.T. 0.003 min
 Lab File: VU043143.D
 Acq: 16 Apr 2021 00:34

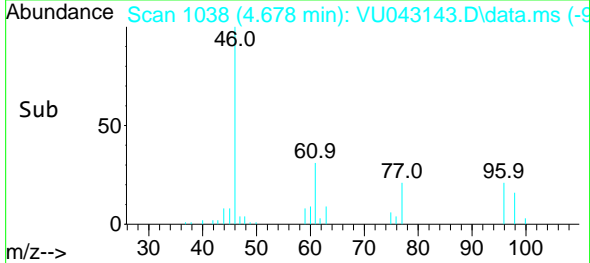
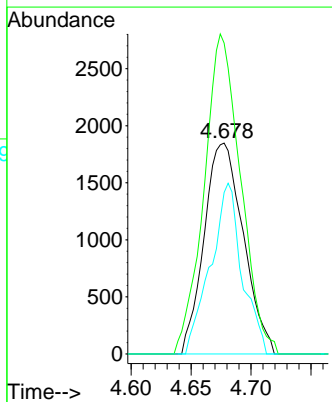
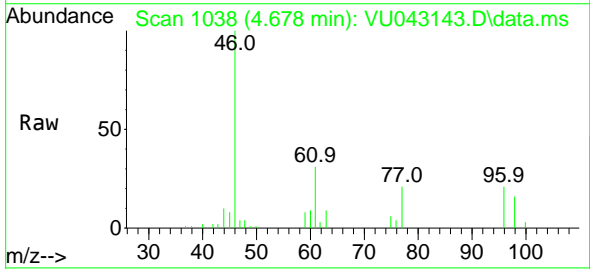
Instrument :
 MSVOA_U
 ClientSampled :

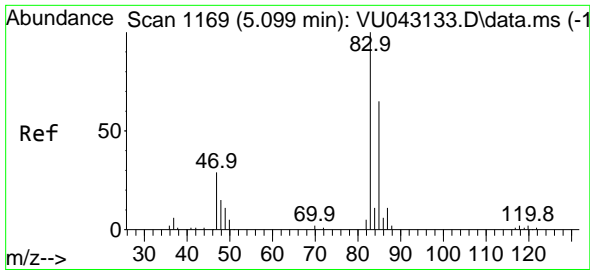
Tgt Ion	Resp	Lower	Upper
63	100		
65	27.3	23.2	43.0
83	0.0	9.9	18.3#



#22
 cis-1,2-Dichloroethene
 Concen: 0.94 ug/L
 RT: 4.678 min Scan# 1038
 Delta R.T. 0.000 min
 Lab File: VU043143.D
 Acq: 16 Apr 2021 00:34

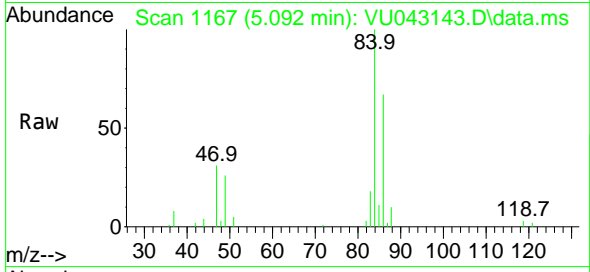
Tgt Ion	Resp	Lower	Upper
96	100		
61	147.4	87.4	162.4
98	76.6	47.7	88.5



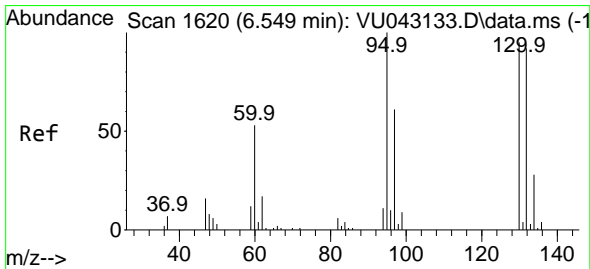
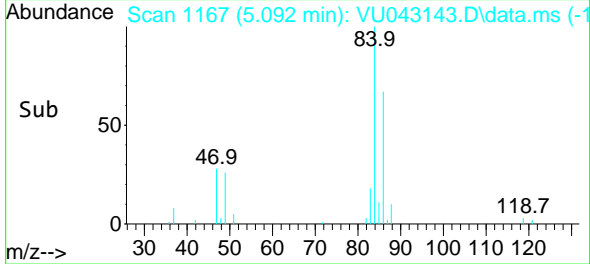
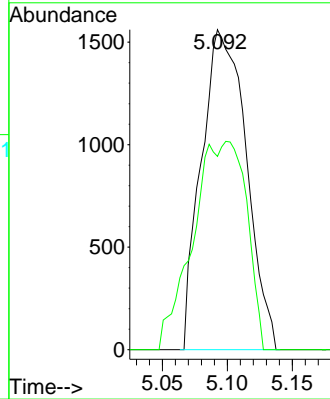


#25
 Chloroform
 Concen: 0.43 ug/L
 RT: 5.092 min Scan# 1167
 Delta R.T. -0.006 min
 Lab File: VU043143.D
 Acq: 16 Apr 2021 00:34

Instrument :
 MSVOA_U
 ClientSampled :

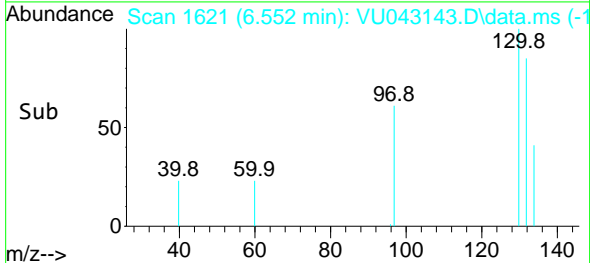
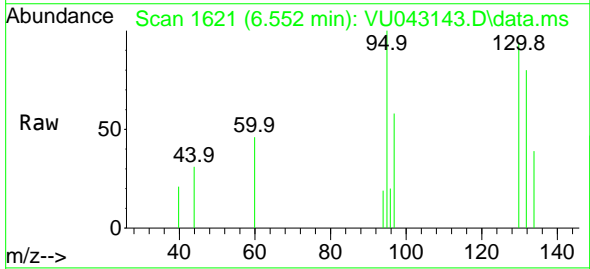
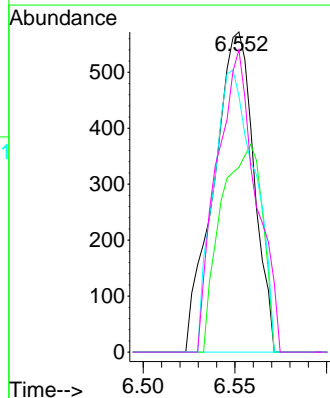


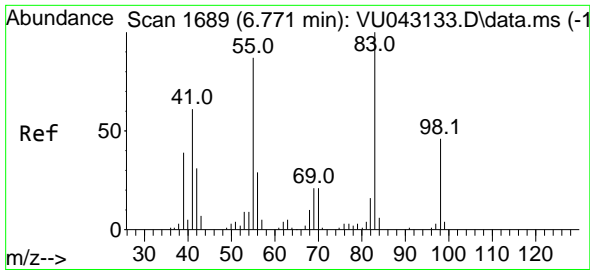
Tgt Ion: 83 Resp: 3750
 Ion Ratio Lower Upper
 83 100
 85 60.4 45.6 84.8



#34
 Trichloroethene
 Concen: 0.19 ug/L
 RT: 6.552 min Scan# 1621
 Delta R.T. 0.003 min
 Lab File: VU043143.D
 Acq: 16 Apr 2021 00:34

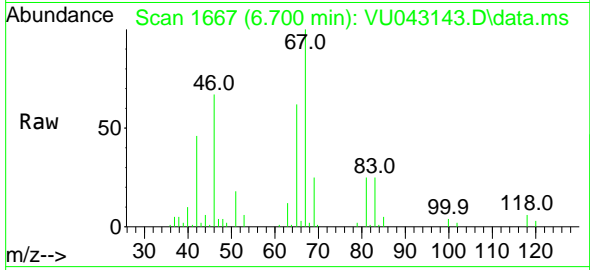
Tgt Ion: 95 Resp: 870
 Ion Ratio Lower Upper
 95 100
 97 57.7 45.8 85.2
 132 80.1 68.7 127.7
 130 94.4 70.1 130.3



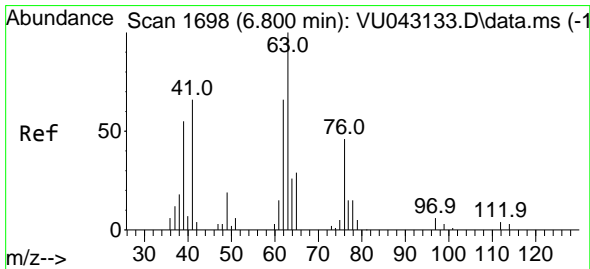
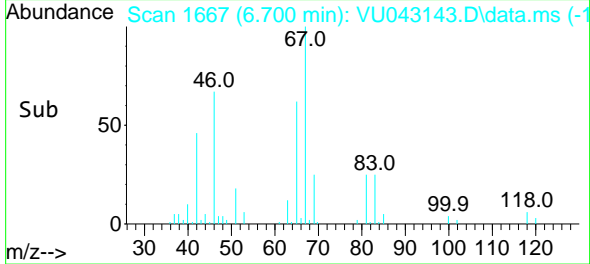
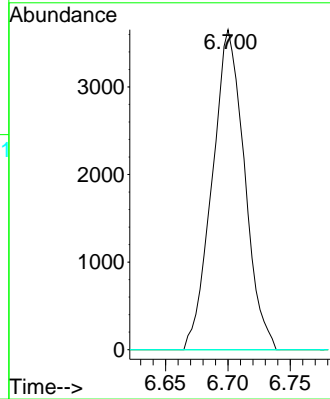


#35
 Methylcyclohexane
 Concen: 1.01 ug/L
 RT: 6.700 min Scan# 1667
 Delta R.T. -0.071 min
 Lab File: VU043143.D
 Acq: 16 Apr 2021 00:34

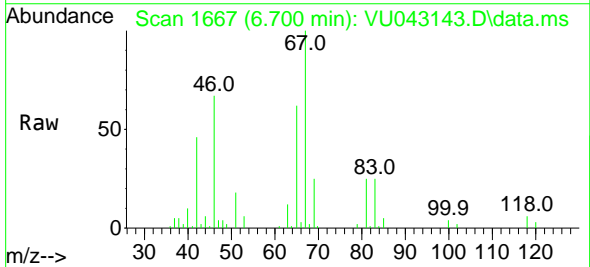
Instrument :
 MSVOA_U
 ClientSampled :



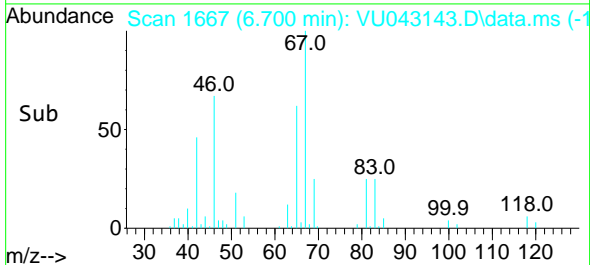
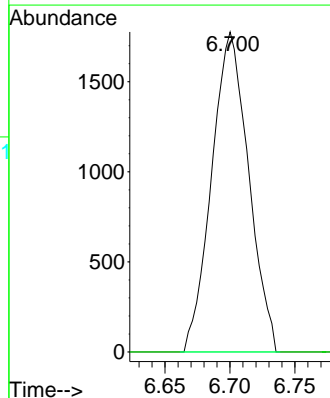
Tgt Ion: 83 Resp: 6586
 Ion Ratio Lower Upper
 83 100
 55 0.0 59.5 89.3#
 98 0.0 37.9 56.9#

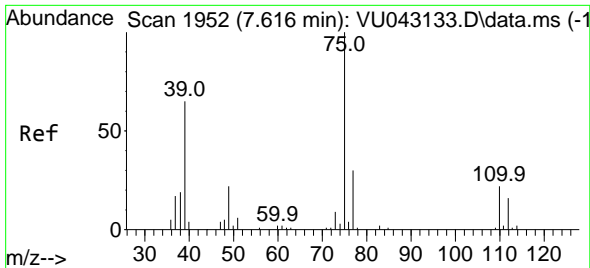


#37
 1,2-Dichloropropane
 Concen: 0.73 ug/L
 RT: 6.700 min Scan# 1667
 Delta R.T. -0.100 min
 Lab File: VU043143.D
 Acq: 16 Apr 2021 00:34



Tgt Ion: 63 Resp: 3513
 Ion Ratio Lower Upper
 63 100
 112 0.0 3.5 5.3#

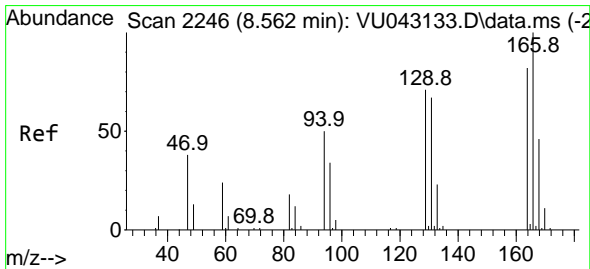
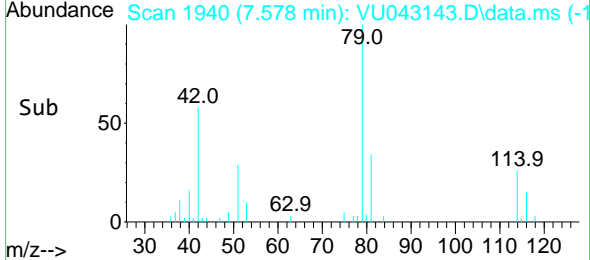
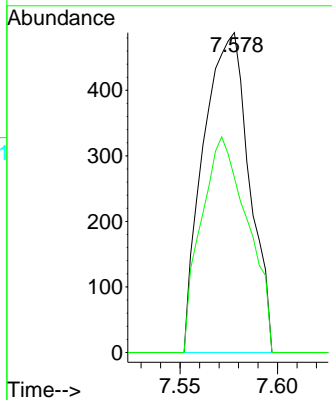
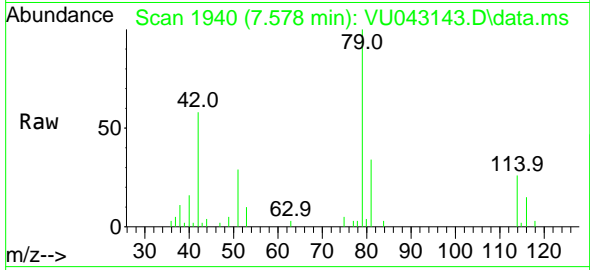




#39
 cis-1,3-Dichloropropene
 Concen: 0.11 ug/L
 RT: 7.578 min Scan# 1940
 Delta R.T. -0.038 min
 Lab File: VU043143.D
 Acq: 16 Apr 2021 00:34

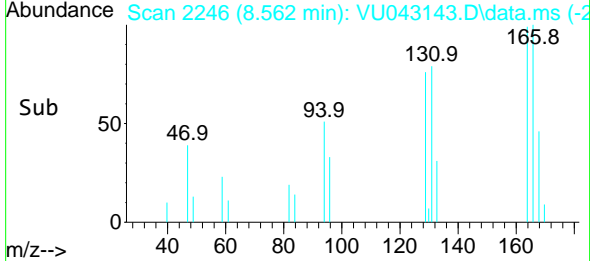
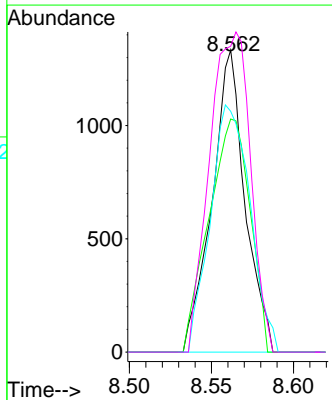
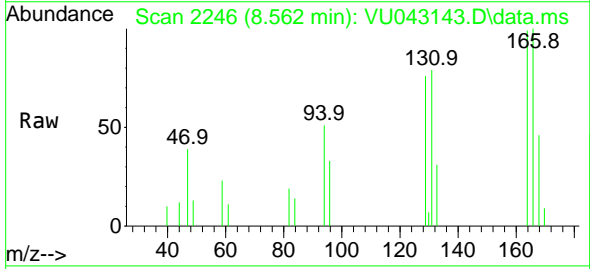
Instrument : MSVOA_U
 ClientSampled :

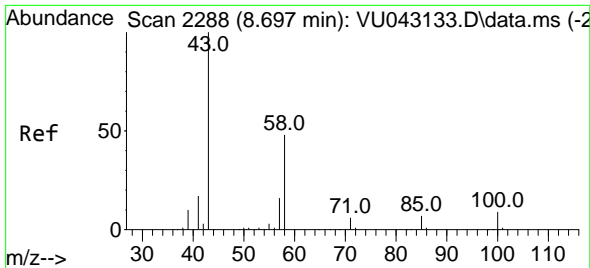
Tgt Ion: 75 Resp: 799
 Ion Ratio Lower Upper
 75 100
 77 54.7 21.8 40.6#



#47
 Tetrachloroethene
 Concen: 0.50 ug/L
 RT: 8.562 min Scan# 2246
 Delta R.T. 0.000 min
 Lab File: VU043143.D
 Acq: 16 Apr 2021 00:34

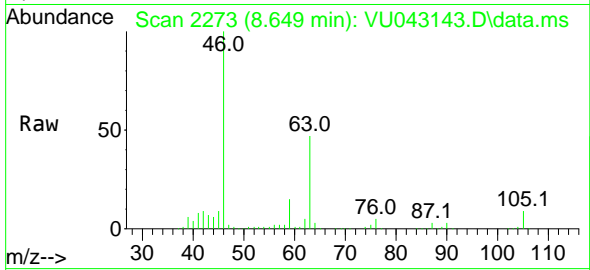
Tgt Ion:164 Resp: 1864
 Ion Ratio Lower Upper
 164 100
 129 77.2 66.6 123.8
 131 79.7 65.9 122.3
 166 101.3 93.7 173.9





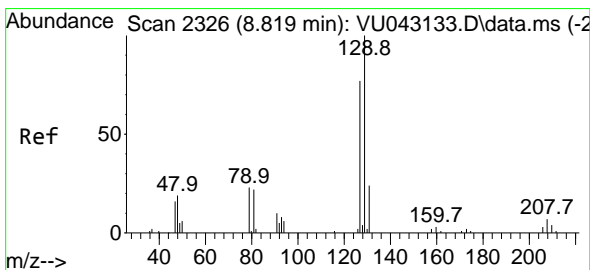
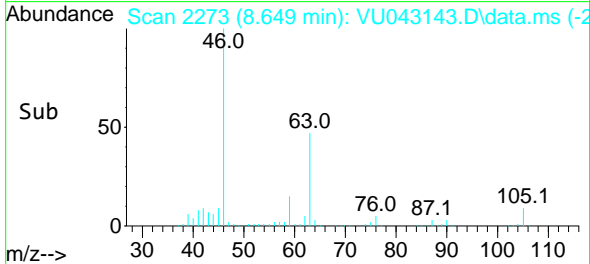
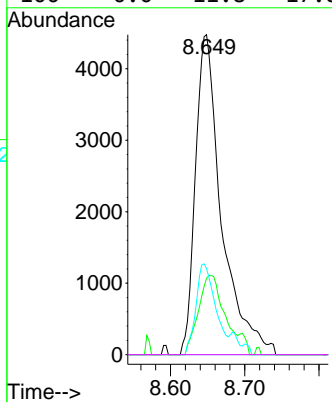
#48
 2-Hexanone
 Concen: 3.46 ug/L
 RT: 8.649 min Scan# 2273
 Delta R.T. -0.048 min
 Lab File: VU043143.D
 Acq: 16 Apr 2021 00:34

Instrument :
 MSVOA_U
 ClientSampled :

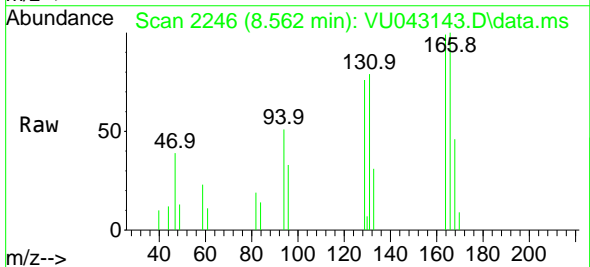


Tgt Ion: 43 Resp: 10935

Ion	Ratio	Lower	Upper
43	100		
58	24.3	50.0	75.0#
57	21.4	17.4	26.0
100	0.0	11.8	17.8#

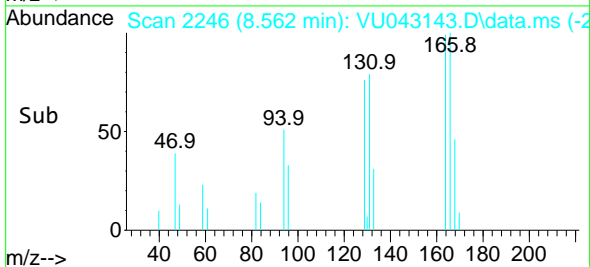
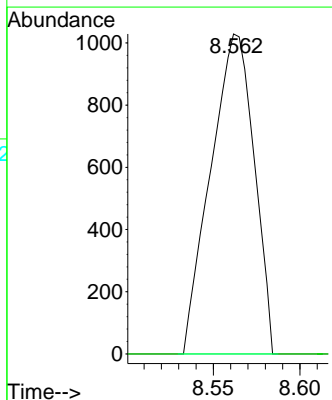


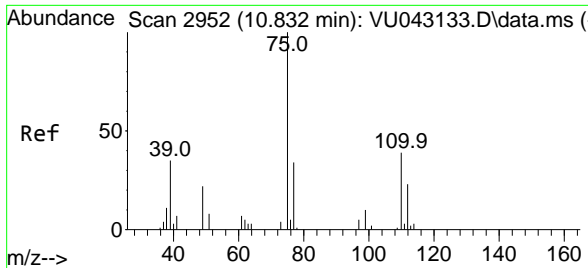
#49
 Dibromochloromethane
 Concen: 0.40 ug/L
 RT: 8.562 min Scan# 2246
 Delta R.T. -0.257 min
 Lab File: VU043143.D
 Acq: 16 Apr 2021 00:34



Tgt Ion: 129 Resp: 1796

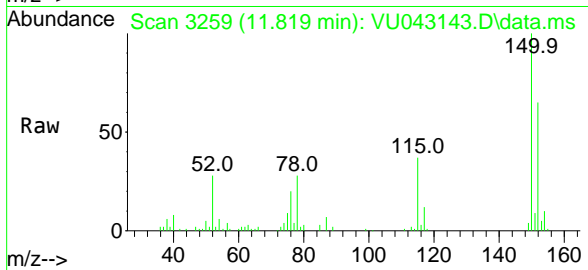
Ion	Ratio	Lower	Upper
129	100		
127	0.0	56.6	105.2#





#61
 1,2,3-Trichloropropane
 Concen: 1.26 ug/L
 RT: 11.819 min Scan# 3259
 Delta R.T. 0.987 min
 Lab File: VU043143.D
 Acq: 16 Apr 2021 00:34

Instrument :
 MSVOA_U
 ClientSampled :



Tgt Ion: 75 Resp: 3885

Ion	Ratio	Lower	Upper
75	100		
110	0.0	31.5	47.3#
77	41.6	26.3	39.5#

