

Data Path : Z:\voasrv\HPCHEM1\MSVOA_U\Data\VU041521\
 Data File : VU043123.D
 Acq On : 15 Apr 2021 16:07
 Operator : SY/MD
 Sample : M1986-07
 Misc : 25.0mL/MSVOA_U/WATER
 ALS Vial : 16 Sample Multiplier: 1

Instrument :
 MSVOA_U
 ClientSampleId :
 C0AT7

Integration Parameters: rteint.p
 Integrator: RTE
 Smoothing : ON Filtering: 5
 Sampling : 1 Min Area: 3 % of largest Peak
 Start Thrs: 0.1 Max Peaks: 100
 Stop Thrs : 0 Peak Location: TOP

If leading or trailing edge < 100 prefer < Baseline drop else tangent >
 Peak separation: 5

Method : Z:\voasrv\HPCHEM1\MSVOA_U\Method\SFAMUTR041521WMA.M
 Title : TRACE VOA SFAM1.0

Signal : TIC: VU043123.D\data.ms

peak #	R.T. min	first scan	max scan	last scan	PK TY	peak height	corr. area	corr. % max.	% of total
1	1.600	74	81	93	rBV	34375	39176	8.96%	1.278%
2	1.919	171	180	193	rVB	34355	44804	10.25%	1.461%
3	2.572	372	383	398	rBV	72172	117889	26.96%	3.844%
4	2.822	441	461	466	rBV4	3015	7709	1.76%	0.251%
5	4.642	1012	1027	1073	rBV	46283	173781	39.74%	5.667%
6	5.073	1146	1161	1184	rBV	69989	149858	34.27%	4.887%
7	5.735	1343	1367	1386	rBV3	132950	351446	80.36%	11.460%
8	6.256	1515	1529	1547	rBV	117568	224642	51.37%	7.325%
9	6.700	1653	1667	1690	rVB	86760	167514	38.30%	5.463%
10	7.575	1927	1939	1954	rBV	44672	77369	17.69%	2.523%
11	7.726	1977	1986	1995	rBV6	2812	5108	1.17%	0.167%
12	7.906	2028	2042	2057	rBV	165901	288530	65.98%	9.409%
13	8.189	2118	2130	2142	rBV2	28264	47965	10.97%	1.564%
14	8.645	2258	2272	2301	rBV	226573	437319	100.00%	14.261%
15	9.423	2503	2514	2532	rBV	172057	285108	65.19%	9.297%
16	10.764	2920	2931	2947	rVB2	67010	105988	24.24%	3.456%
17	11.819	3248	3259	3275	rBV	175817	278541	63.69%	9.083%
18	12.201	3365	3378	3396	rVB	165907	263857	60.34%	8.604%

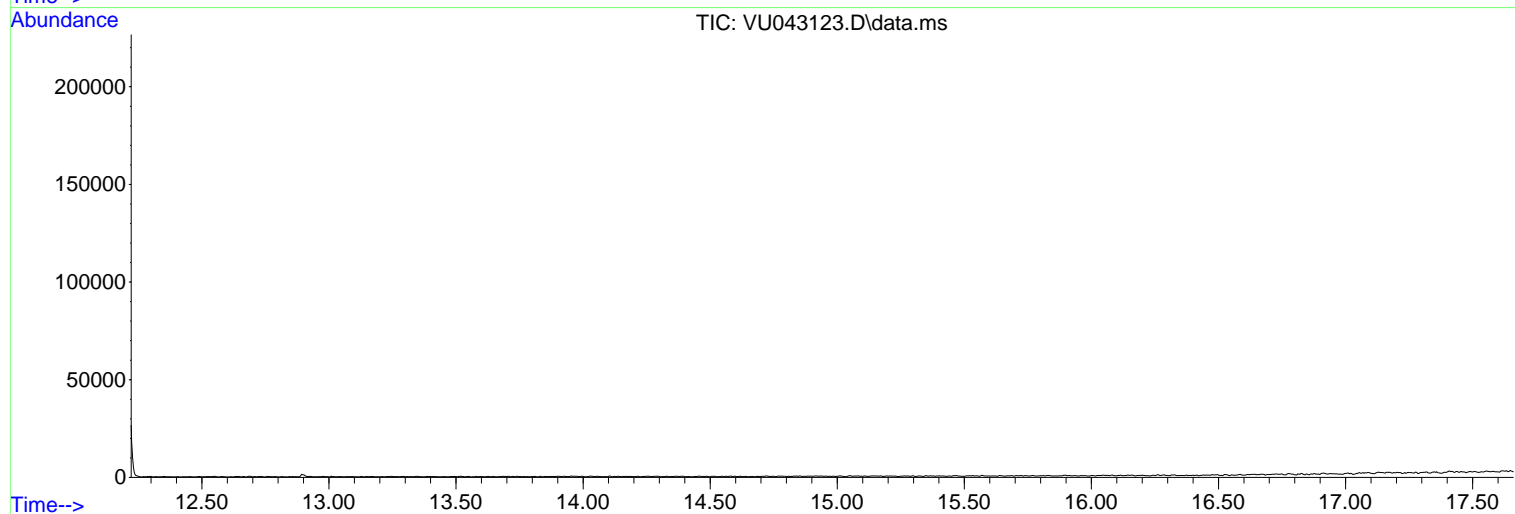
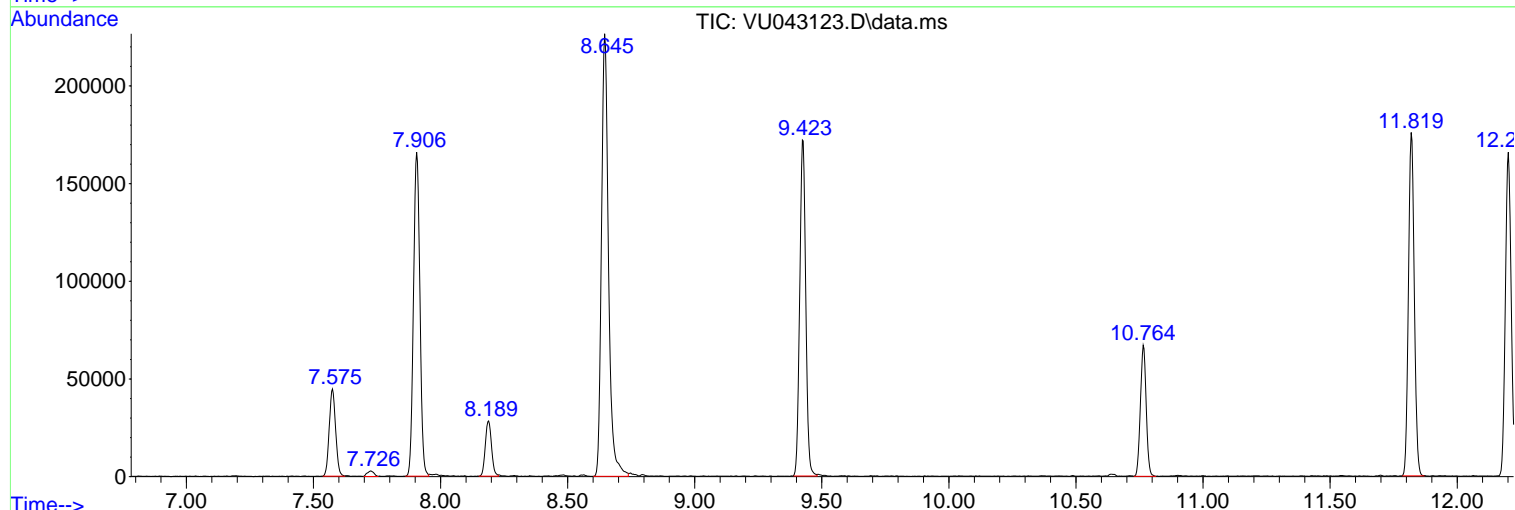
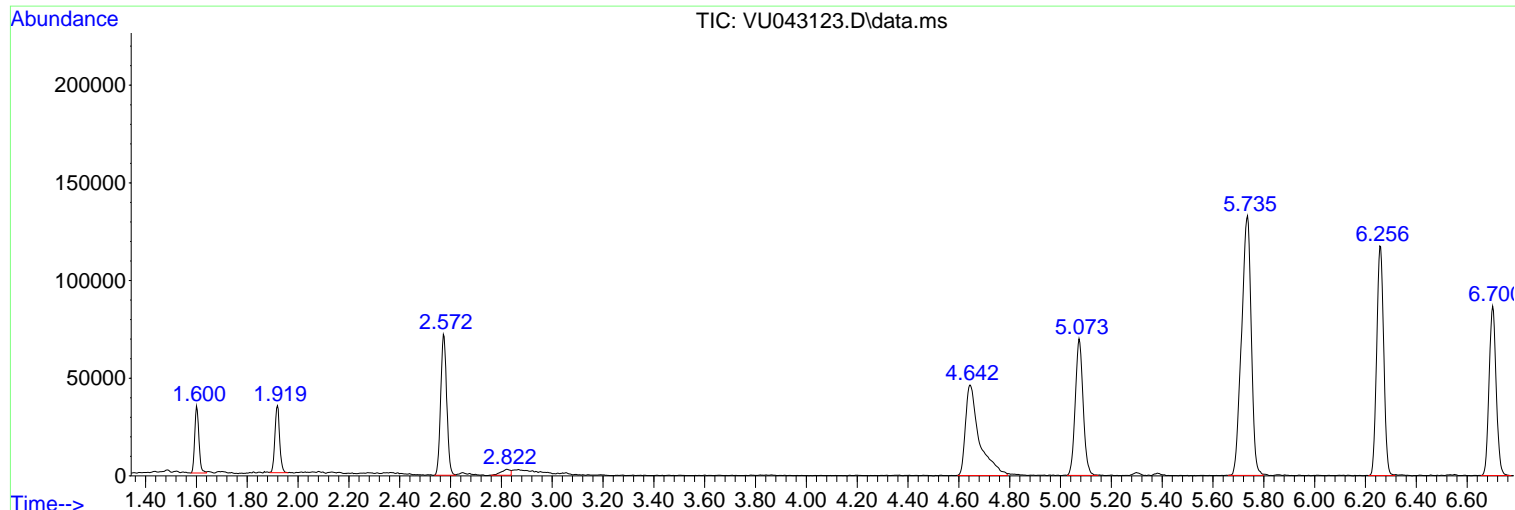
Sum of corrected areas: 3066604

Data Path : Z:\voasrv\HPCHEM1\MSVOA_U\Data\VU041521\
 Data File : VU043123.D
 Acq On : 15 Apr 2021 16:07
 Operator : SY/MD
 Sample : M1986-07
 Misc : 25.0mL/MSVOA_U/WATER
 ALS Vial : 16 Sample Multiplier: 1

Instrument :
 MSVOA_U
 ClientSampled :
 C0AT7

Quant Method : Z:\voasrv\HPCHEM1\MSVOA_U\Method\SFAMUTR041521WMA.M
 Quant Title : TRACE VOA SFAM1.0

TIC Library : C:\DATABASE\NIST11.L
 TIC Integration Parameters: LSCINT.P



Library Search Compound Report

Data Path : Z:\voasrv\HPCHEM1\MSVOA_U\Data\VU041521\
Data File : VU043123.D
Acq On : 15 Apr 2021 16:07
Operator : SY/MD
Sample : M1986-07
Misc : 25.0mL/MSVOA_U/WATER
ALS Vial : 16 Sample Multiplier: 1

Instrument :
MSVOA_U
ClientSampleId :
C0AT7

Quant Method : Z:\voasrv\HPCHEM1\MSVOA_U\Method\SFAMUTR041521WMA.M
Quant Title : TRACE VOA SFAM1.0

TIC Library : C:\DATABASE\NIST11.L
TIC Integration Parameters: LSCINT.P

No Library Search Compounds Detected

Data Path : Z:\voasrv\HPCHEM1\MSVOA_U\Data\VU041521\
Data File : VU043123.D
Acq On : 15 Apr 2021 16:07
Operator : SY/MD
Sample : M1986-07
Misc : 25.0mL/MSVOA_U/WATER
ALS Vial : 16 Sample Multiplier: 1

Instrument :
MSVOA_U
ClientSampled :
C0AT7

Quant Method : Z:\voasrv\HPCHEM1\MSVOA_U\Method\SFAMUTR041521WMA.M
Quant Title : TRACE VOA SFAM1.0

TIC Library : C:\DATABASE\NIST11.L
TIC Integration Parameters: LSCINT.P

TIC Top Hit name	RT	EstConc	Units	Response	--Internal Standard--		
					#	RT	Resp Conc
