

Data Path : Z:\VOASRV\HPCHEM1\MSVOA U\DATA\VU041819\
 Data File : VU031290.D
 Acq On : 18 Apr 2019 05:12
 Operator : JC/SP
 Sample : K2452-08
 Misc : 25.0mL/MSVOA U/WATER
 ALS Vial : 30 Sample Multiplier: 1

Instrument :
 MSVOA_U
 ClientSampleId :
 YAN00

Quant Time: Apr 27 06:43:51 2019
 Quant Method : Z:\VOASRV\HPCHEM1\MSVOA_U\METHOD\SOMUTR041819WMA.M
 Quant Title : TRACE VOA SOM01.0
 QLast Update : Thu Apr 18 08:39:25 2019
 Response via : Initial Calibration

Internal Standards	R.T.	QIon	Response	Conc	Units	Dev(Min)
1) 1,4-Difluorobenzene	5.88	114	216398	5.00	ug/L	0.00
28) Chlorobenzene-d5	9.09	117	210396	5.00	ug/L	0.00
60) 1,4-Dichlorobenzene-d4	11.48	152	84219	5.00	ug/L	0.00

System Monitoring Compounds

4) Vinyl Chloride-d3	1.40	65	106041	5.94	ug/L	0.00
Spiked Amount	5.000	Range	40 - 130	Recovery	=	118.80%
7) Chloroethane-d5	1.68	69	87694	5.93	ug/L	0.00
Spiked Amount	5.000	Range	65 - 130	Recovery	=	118.60%
11) 1,1-Dichloroethene-d2	2.27	63	161625	4.39	ug/L	0.00
Spiked Amount	5.000	Range	60 - 125	Recovery	=	87.80%
20) 2-Butanone-d5	4.22	46	244223	59.10	ug/L	0.00
Spiked Amount	50.000	Range	40 - 130	Recovery	=	118.20%
24) Chloroform-d	4.64	84	144553	5.58	ug/L	0.00
Spiked Amount	5.000	Range	70 - 125	Recovery	=	111.60%
26) 1,2-Dichloroethane-d4	5.31	65	80066	6.04	ug/L	0.00
Spiked Amount	5.000	Range	70 - 130	Recovery	=	120.80%
32) Benzene-d6	5.33	84	279984	4.90	ug/L	0.00
Spiked Amount	5.000	Range	70 - 125	Recovery	=	98.00%
36) 1,2-Dichloropropane-d6	6.32	67	93277	5.19	ug/L	0.00
Spiked Amount	5.000	Range	60 - 140	Recovery	=	103.80%
41) Toluene-d8	7.56	98	236410	4.46	ug/L	0.00
Spiked Amount	5.000	Range	70 - 130	Recovery	=	89.20%
43) trans-1,3-Dichloropropene-	7.85	79	33948	4.68	ug/L	0.00
Spiked Amount	5.000	Range	55 - 130	Recovery	=	93.60%
46) 2-Hexanone-d5	8.31	63	184578	51.88	ug/L	0.00
Spiked Amount	50.000	Range	45 - 130	Recovery	=	103.76%
57) 1,1,2,2-Tetrachloroethane-	10.43	84	77306	5.49	ug/L	0.00
Spiked Amount	5.000	Range	65 - 120	Recovery	=	109.80%
64) 1,2-Dichlorobenzene-d4	11.86	152	87250	5.53	ug/L	0.00
Spiked Amount	5.000	Range	80 - 120	Recovery	=	110.60%

Target Compounds

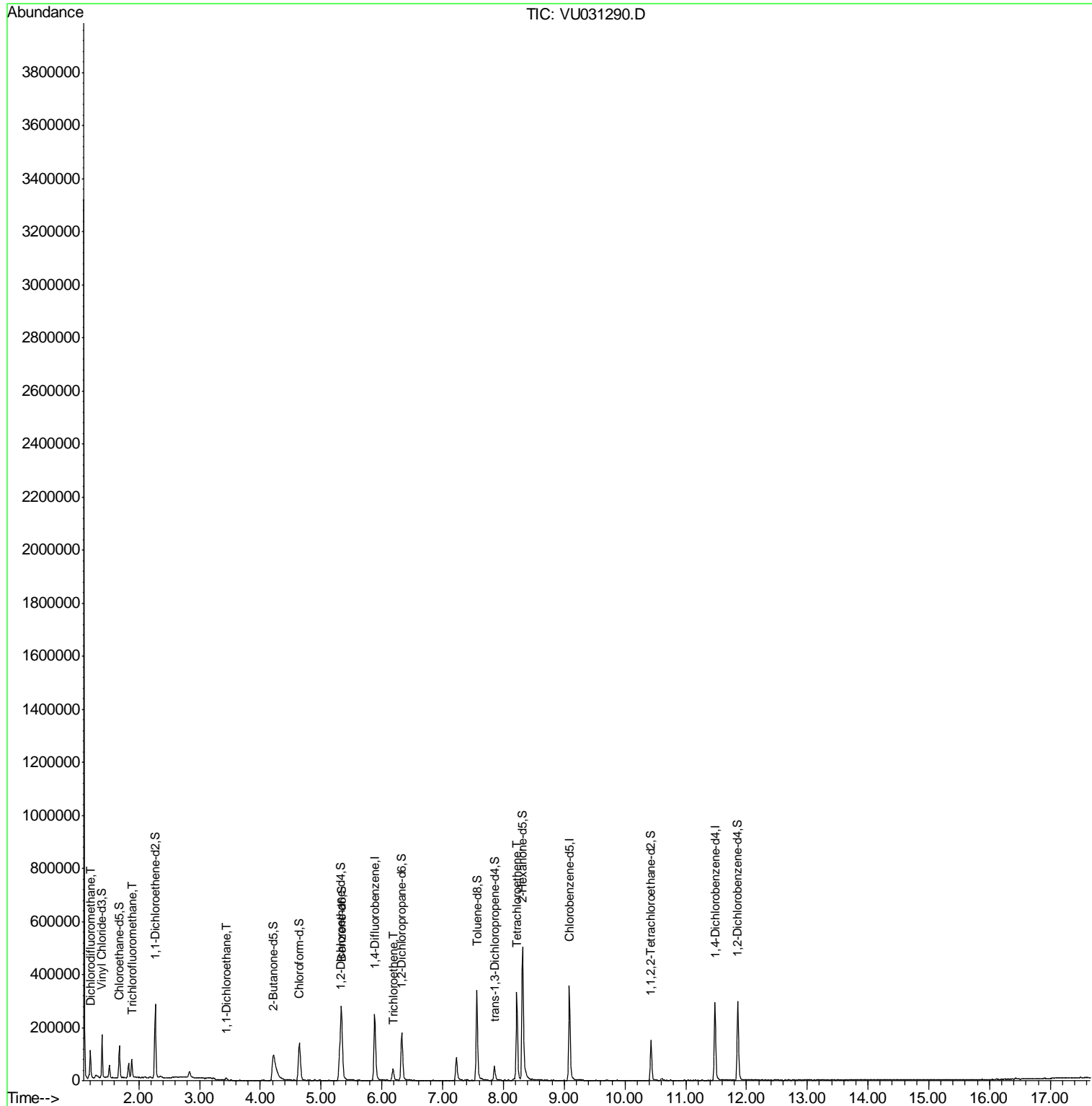
Target Compounds	R.T.	QIon	Response	Conc	Units	Ovalue
2) Dichlorodifluoromethane	1.20	85	56419	3.140	ug/L	99
9) Trichlorofluoromethane	1.88	101	39939	1.364	ug/L	98
19) 1,1-Dichloroethane	3.44	63	6946	0.255	ug/L	96
34) Trichloroethene	6.18	95	15196	0.881	ug/L	93
47) Tetrachloroethene	8.22	164	77030	5.911	ug/L	99

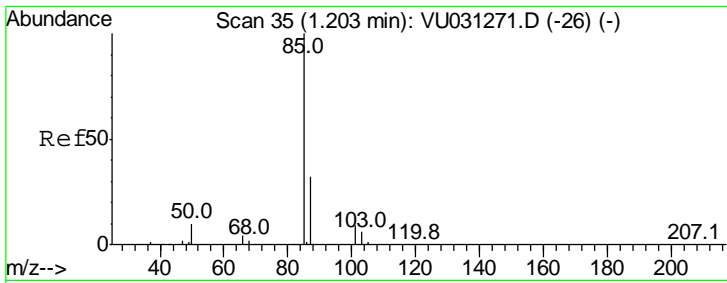
(#) = qualifier out of range (m) = manual integration (+) = signals summed

Data Path : Z:\VOASRV\HPCHEM1\MSVOA U\DATA\VU041819\
 Data File : VU031290.D
 Acq On : 18 Apr 2019 05:12
 Operator : JC/SP
 Sample : K2452-08
 Misc : 25.0mL/MSVOA U/WATER
 ALS Vial : 30 Sample Multiplier: 1

Instrument :
 MSVOA_U
 ClientSampleId :
 YAN00

Quant Time: Apr 27 06:43:51 2019
 Quant Method : Z:\VOASRV\HPCHEM1\MSVOA_U\METHOD\SOMUTR041819WMA.M
 Quant Title : TRACE VOA SOM01.0
 QLast Update : Thu Apr 18 08:39:25 2019
 Response via : Initial Calibration

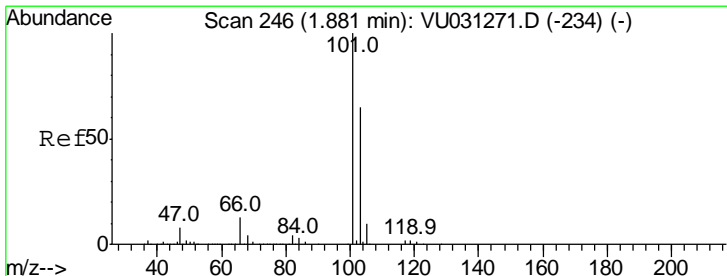
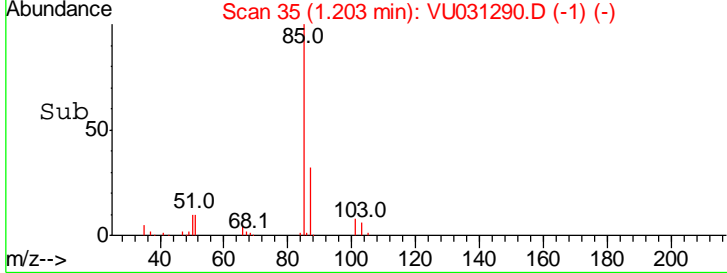
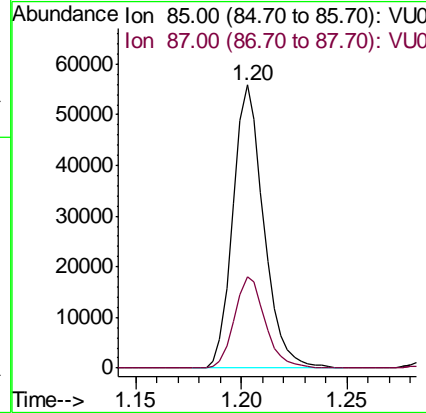
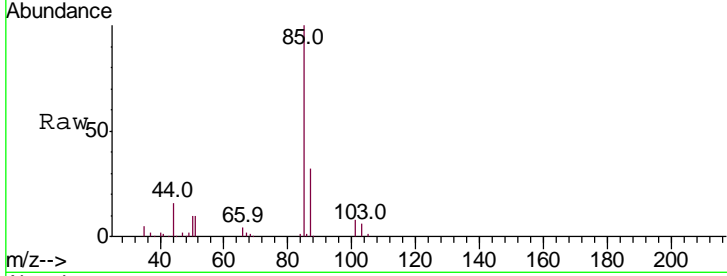




#2
 Dichlorodifluoromethane
 Concen: 3.140 ug/L
 RT: 1.20 min Scan# 35
 Delta R.T. 0.00 min
 Lab File: VU031290.D
 Acq: 18 Apr 2019 05:12

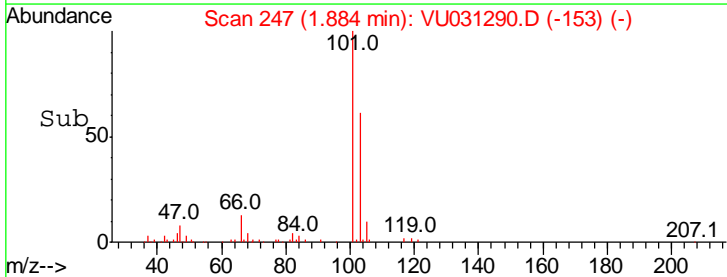
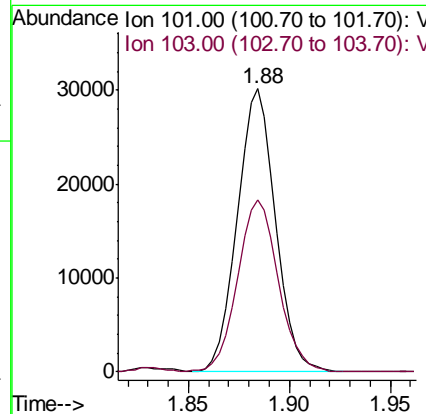
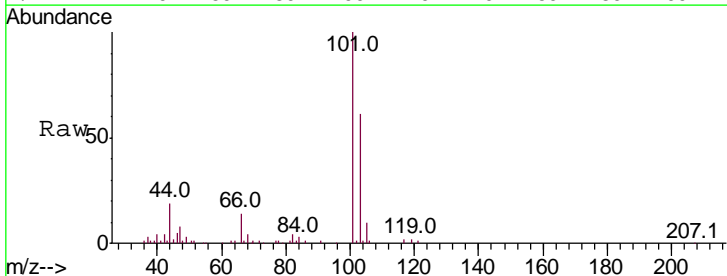
Instrument :
 MSVOA_U
 ClientSampled :
 YAN00

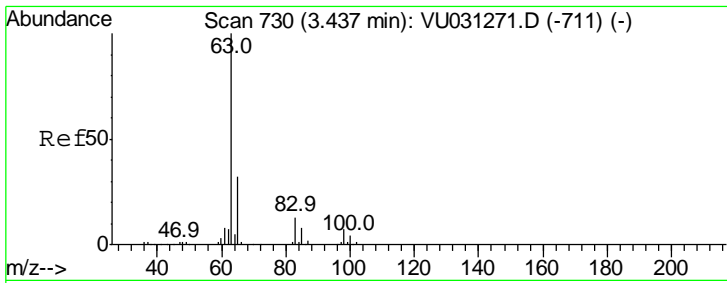
Tgt Ion	Resp	Lower	Upper
85	56419		
85	100		
87	32.3	26.4	39.6



#9
 Trichlorofluoromethane
 Concen: 1.364 ug/L
 RT: 1.88 min Scan# 247
 Delta R.T. 0.00 min
 Lab File: VU031290.D
 Acq: 18 Apr 2019 05:12

Tgt Ion	Resp	Lower	Upper
101	39939		
101	100		
103	64.9	50.9	76.3

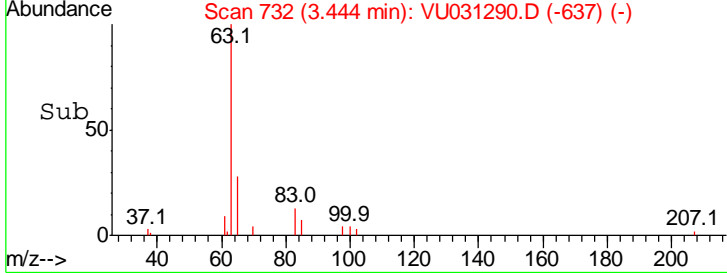
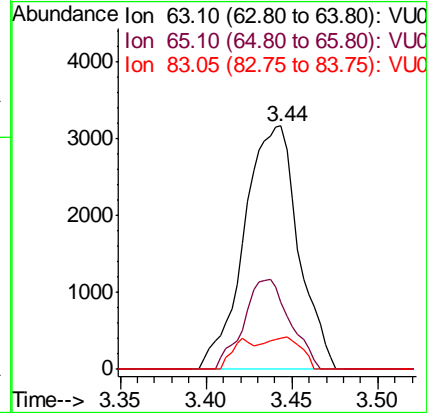
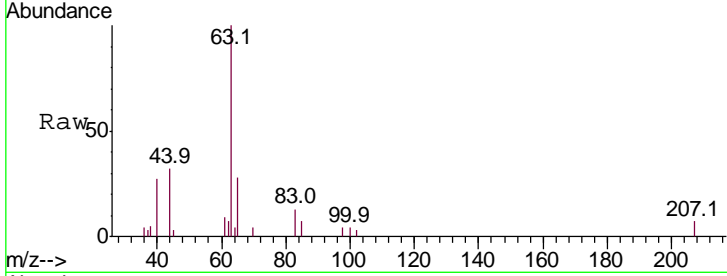




#19
 1,1-Dichloroethane
 Concen: 0.255 ug/L
 RT: 3.44 min Scan# 732
 Delta R.T. 0.01 min
 Lab File: VU031290.D
 Acq: 18 Apr 2019 05:12

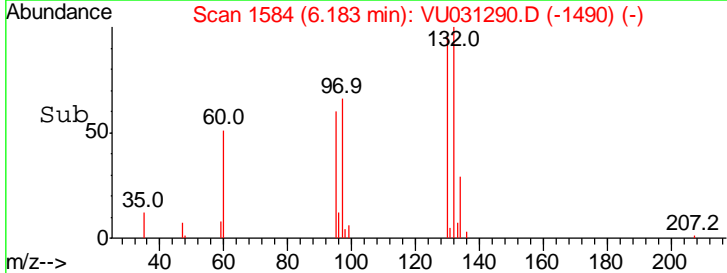
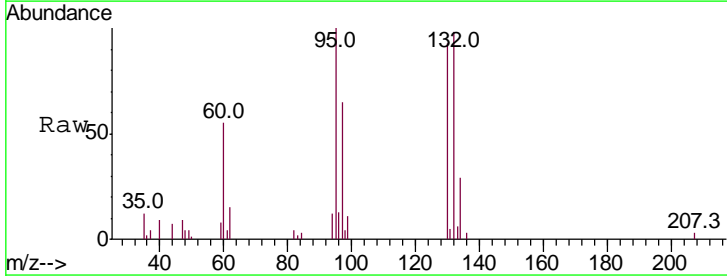
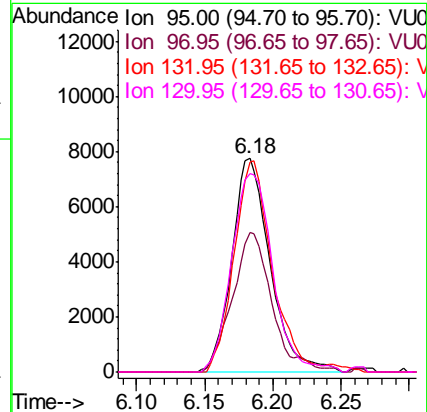
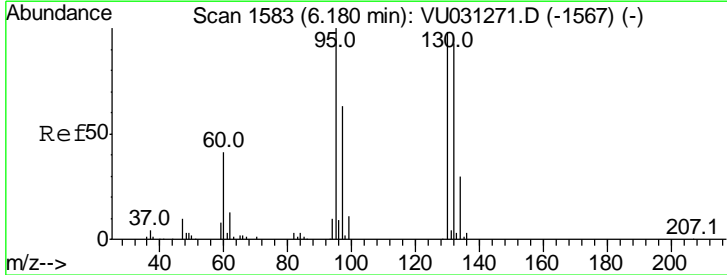
Instrument :
 MSVOA_U
ClientSampled :
 YAN00

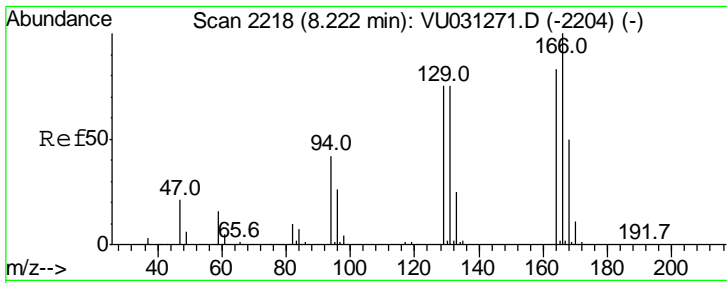
Tgt Ion	Resp	Lower	Upper
63	100		
65	27.8	21.6	40.2
83	13.0	9.2	17.2



#34
 Trichloroethene
 Concen: 0.881 ug/L
 RT: 6.18 min Scan# 1584
 Delta R.T. 0.00 min
 Lab File: VU031290.D
 Acq: 18 Apr 2019 05:12

Tgt Ion	Resp	Lower	Upper
95	100		
97	65.3	42.7	79.3
132	98.3	62.7	116.5
130	93.0	69.7	129.4

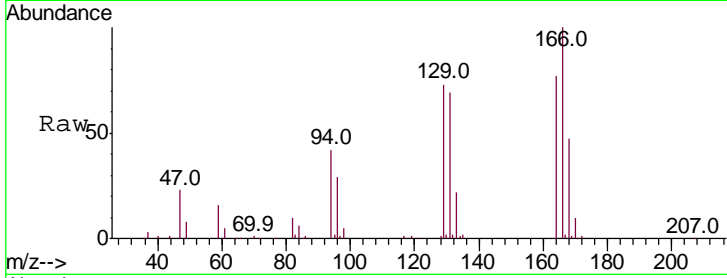




#47

Tetrachloroethene
 Concen: 5.911 ug/L
 RT: 8.22 min Scan# 2218
 Delta R.T. -0.00 min
 Lab File: VU031290.D
 Acq: 18 Apr 2019 05:12

Instrument :
 MSVOA_U
 ClientSampleId :
 YAN00



Tot Ion:164 Resp: 77030

Ion	Ratio	Lower	Upper
164	100		
129	95.4	65.2	121.2
131	90.5	61.9	114.9
166	130.6	91.2	169.4

