

Data Path : Z:\VOASRV\HPCHEM1\MSVOA_U\DATA\VU041919\
 Data File : VU031305.D
 Acq On : 18 Apr 2019 14:27
 Operator : JC/SP
 Sample : K2410-13
 Misc : 25.0mL/MSVOA_U/WATER
 ALS Vial : 11 Sample Multiplier: 1

Instrument :
 MSVOA_U
 ClientSampleID :
 C0XD2

Quant Time: Apr 19 04:41:29 2019
 Quant Method : Z:\VOASRV\HPCHEM1\MSVOA_U\METHOD\SOMUTR041919WMA.M
 Quant Title : TRACE VOA SOM01.0
 QLast Update : Fri Apr 19 04:38:37 2019
 Response via : Initial Calibration

Internal Standards	R.T.	QIon	Response	Conc	Units	Dev(Min)
1) 1,4-Difluorobenzene	5.88	114	202004	5.00	ug/L	0.00
28) Chlorobenzene-d5	9.09	117	204888	5.00	ug/L	0.00
60) 1,4-Dichlorobenzene-d4	11.48	152	83338	5.00	ug/L	0.00

System Monitoring Compounds

4) Vinyl Chloride-d3	1.40	65	99541	4.37	ug/L	0.00
Spiked Amount	5.000	Range	40 - 130	Recovery	=	87.40%
7) Chloroethane-d5	1.68	69	78832	4.35	ug/L	0.00
Spiked Amount	5.000	Range	65 - 130	Recovery	=	87.00%
11) 1,1-Dichloroethene-d2	2.27	63	151855	3.40	ug/L	0.00
Spiked Amount	5.000	Range	60 - 125	Recovery	=	68.00%
20) 2-Butanone-d5	4.20	46	211508	48.58	ug/L	-0.01
Spiked Amount	50.000	Range	40 - 130	Recovery	=	97.16%
24) Chloroform-d	4.64	84	136617	4.81	ug/L	0.00
Spiked Amount	5.000	Range	70 - 125	Recovery	=	96.20%
26) 1,2-Dichloroethane-d4	5.31	65	75805	4.93	ug/L	0.00
Spiked Amount	5.000	Range	70 - 130	Recovery	=	98.60%
32) Benzene-d6	5.34	84	260225	4.56	ug/L	0.00
Spiked Amount	5.000	Range	70 - 125	Recovery	=	91.20%
36) 1,2-Dichloropropane-d6	6.33	67	85798	4.78	ug/L	0.00
Spiked Amount	5.000	Range	60 - 140	Recovery	=	95.60%
41) Toluene-d8	7.56	98	224402	4.40	ug/L	0.00
Spiked Amount	5.000	Range	70 - 130	Recovery	=	88.00%
43) trans-1,3-Dichloropropene-	7.85	79	33575	4.67	ug/L	0.00
Spiked Amount	5.000	Range	55 - 130	Recovery	=	93.40%
46) 2-Hexanone-d5	8.31	63	149509	44.99	ug/L	0.00
Spiked Amount	50.000	Range	45 - 130	Recovery	=	89.98%
57) 1,1,2,2-Tetrachloroethane-	10.43	84	69156	4.60	ug/L	0.00
Spiked Amount	5.000	Range	65 - 120	Recovery	=	92.00%
64) 1,2-Dichlorobenzene-d4	11.86	152	83462	5.14	ug/L	0.00
Spiked Amount	5.000	Range	80 - 120	Recovery	=	102.80%

Target Compounds

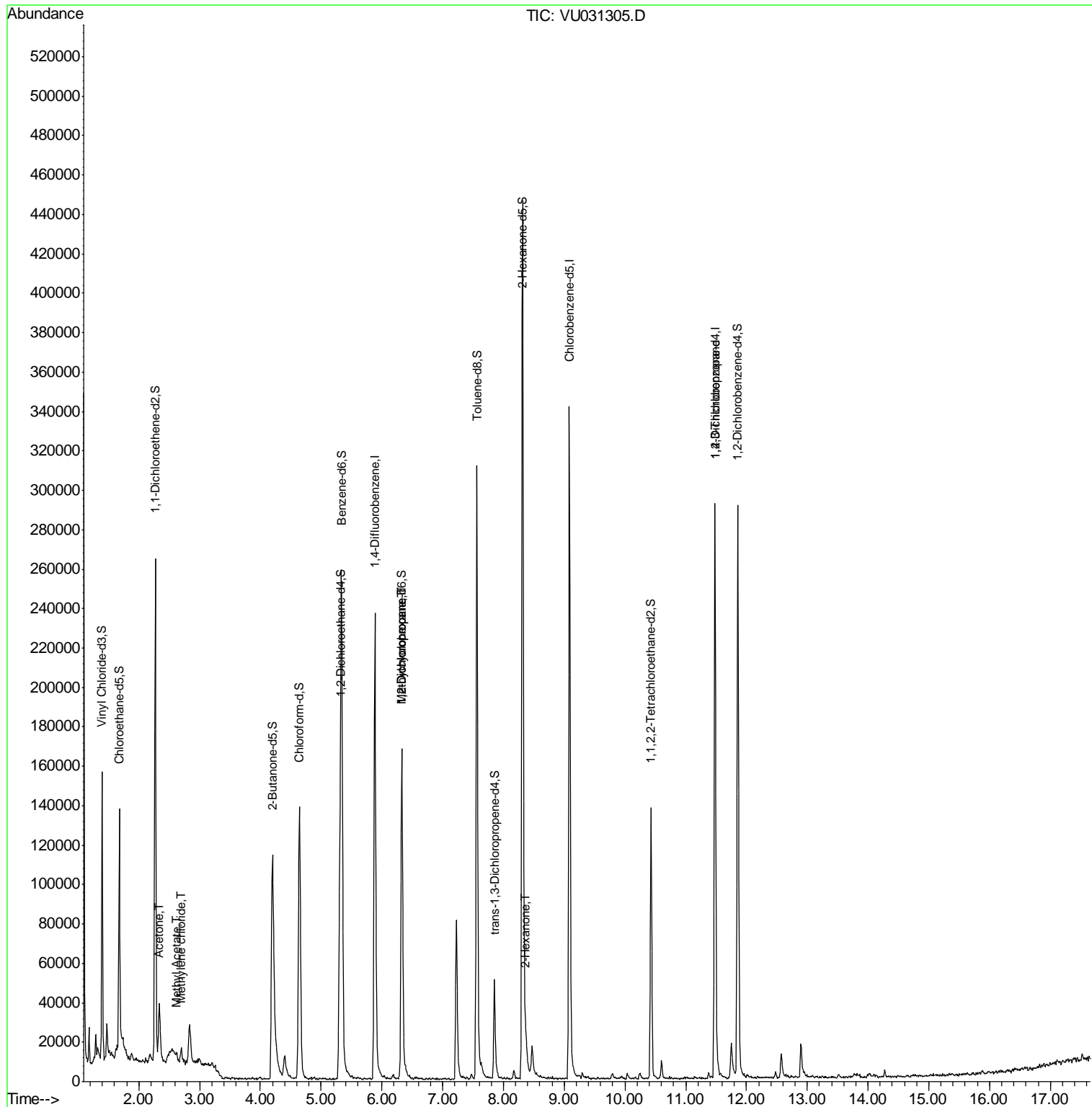
Target Compounds	R.T.	QIon	Response	Conc	Units	Qvalue
13) Acetone	2.34	43	36188	7.471	ug/L	99
15) Methyl Acetate	2.61	43	2448	0.185	ug/L #	76
16) Methylene chloride	2.70	84	3413	0.130	ug/L	92
35) Methylcyclohexane	6.33	83	19573	0.756	ug/L #	14
37) 1,2-Dichloropropane	6.33	63	9648	0.526	ug/L #	89
48) 2-Hexanone	8.37	43	8148	0.975	ug/L #	74
59) 1,2,3-Trichloropropane	11.48	75	9851	0.823	ug/L	92

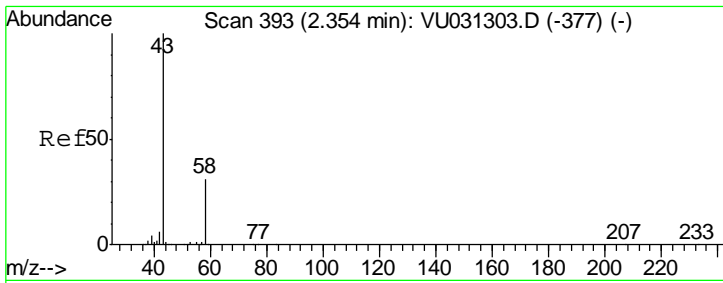
(#) = qualifier out of range (m) = manual integration (+) = signals summed

Data Path : Z:\VOASRV\HPCHEM1\MSVOA_U\DATA\VU041919\
 Data File : VU031305.D
 Acq On : 18 Apr 2019 14:27
 Operator : JC/SP
 Sample : K2410-13
 Misc : 25.0mL/MSVOA_U/WATER
 ALS Vial : 11 Sample Multiplier: 1

Instrument :
 MSVOA_U
 ClientSampled :
 C0XD2

Quant Time: Apr 19 04:41:29 2019
 Quant Method : Z:\VOASRV\HPCHEM1\MSVOA_U\METHOD\SOMUTR041919WMA.M
 Quant Title : TRACE VOA SOM01.0
 QLast Update : Fri Apr 19 04:38:37 2019
 Response via : Initial Calibration

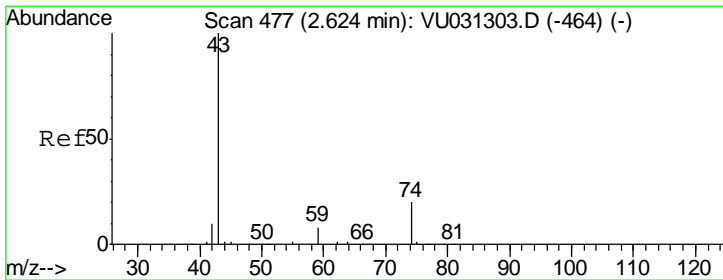
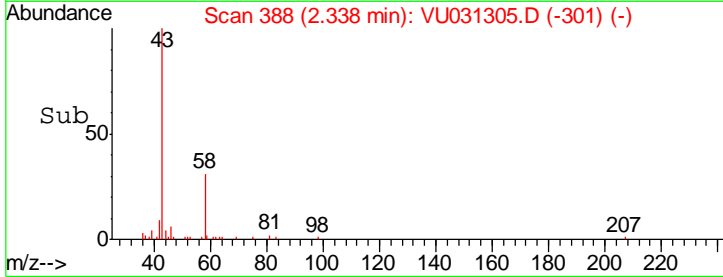
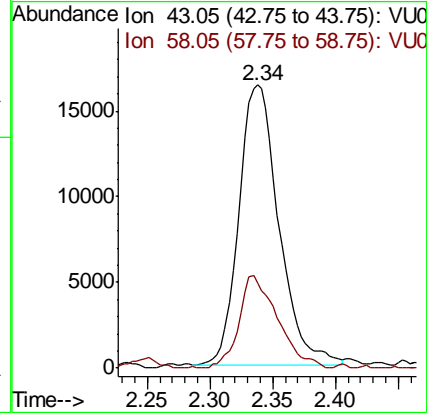
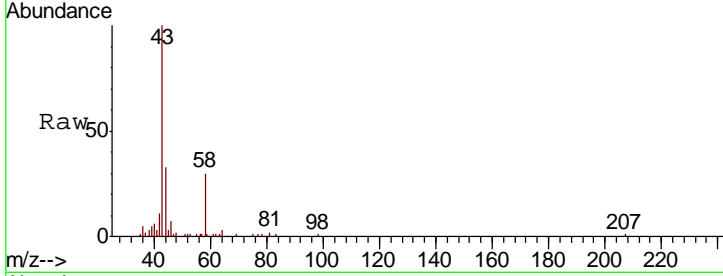




#13
 Acetone
 Concen: 7.471 ug/L
 RT: 2.34 min Scan# 388
 Delta R.T. -0.02 min
 Lab File: VU031305.D
 Acq: 18 Apr 2019 14:27

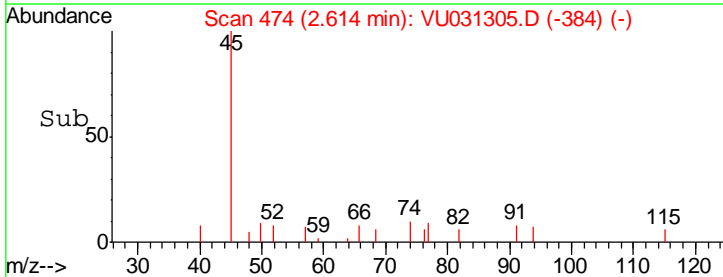
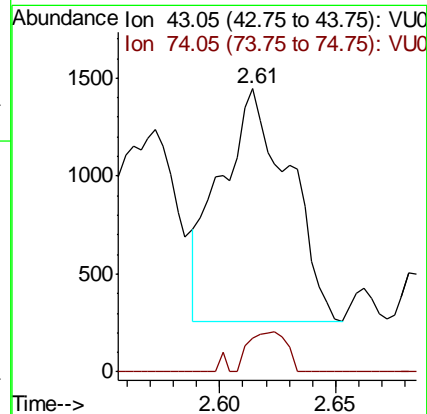
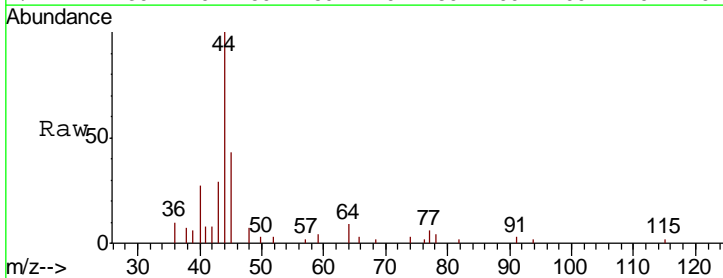
Instrument : MSVOA_U
 ClientSampled : C0XD2

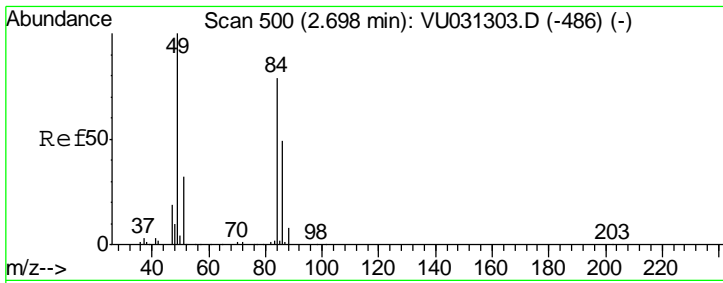
Tgt Ion	Resp	Lower	Upper
43	36188		
58	31.9	0.0	64.4



#15
 Methyl Acetate
 Concen: 0.185 ug/L
 RT: 2.61 min Scan# 474
 Delta R.T. -0.01 min
 Lab File: VU031305.D
 Acq: 18 Apr 2019 14:27

Tgt Ion	Resp	Lower	Upper
43	2448		
74	9.5	16.7	25.1#

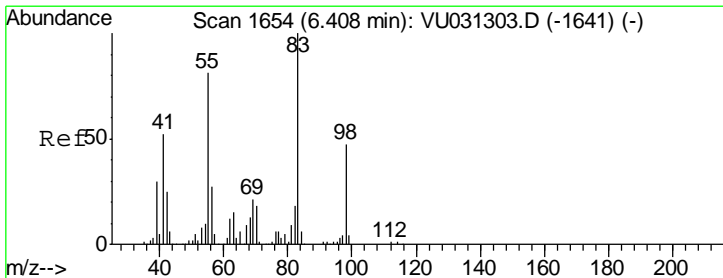
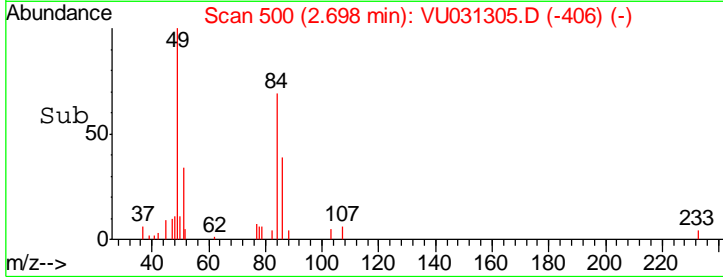
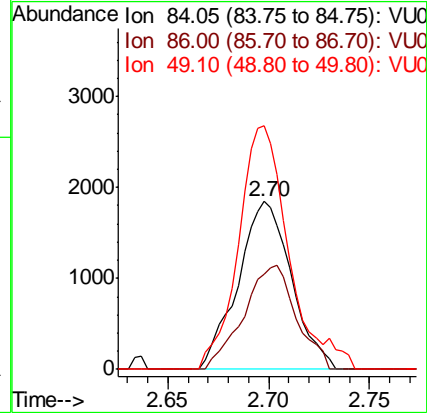
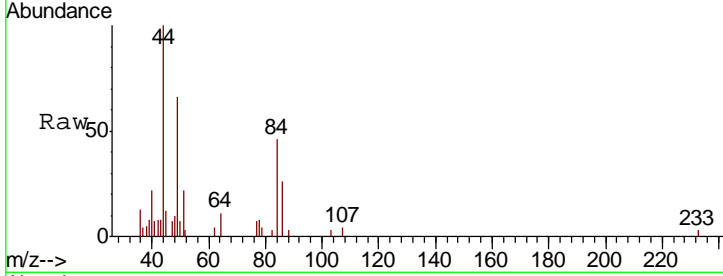




#16
 Methylene chloride
 Concen: 0.130 ug/L
 RT: 2.70 min Scan# 500
 Delta R.T. 0.00 min
 Lab File: VU031305.D
 Acq: 18 Apr 2019 14:27

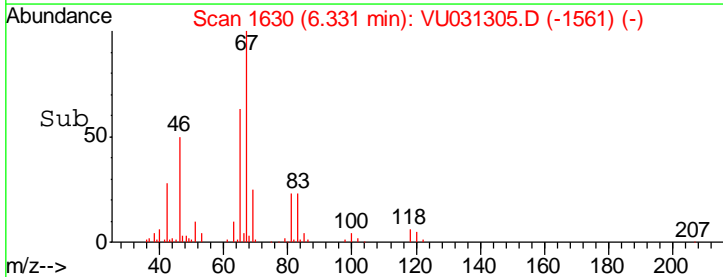
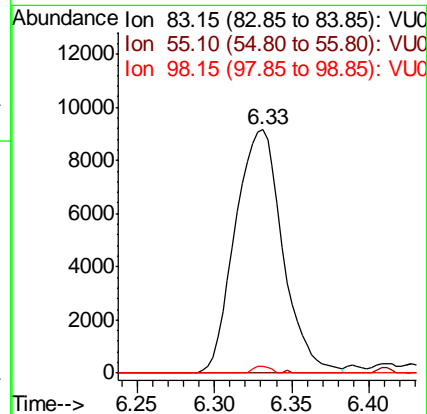
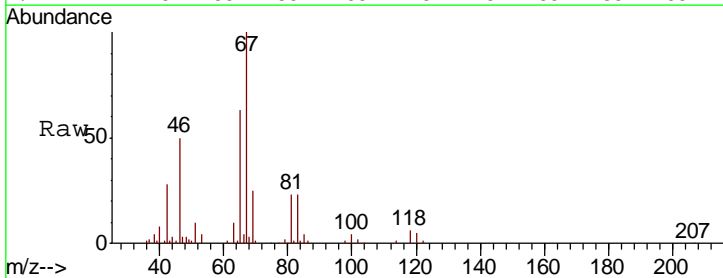
Instrument : MSVOA_U
 ClientSampled : C0XD2

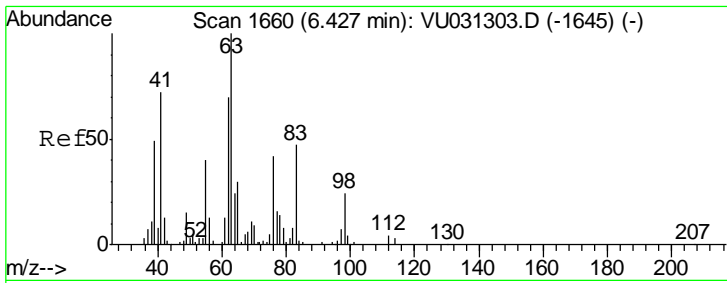
Tgt Ion	Resp	Lower	Upper
84	3413		
84	100		
86	57.0	44.1	81.9
49	145.0	94.6	175.6



#35
 Methylcyclohexane
 Concen: 0.756 ug/L
 RT: 6.33 min Scan# 1630
 Delta R.T. -0.08 min
 Lab File: VU031305.D
 Acq: 18 Apr 2019 14:27

Tgt Ion	Resp	Lower	Upper
83	19573		
83	100		
55	0.1	70.6	105.8#
98	1.0	37.0	55.4#

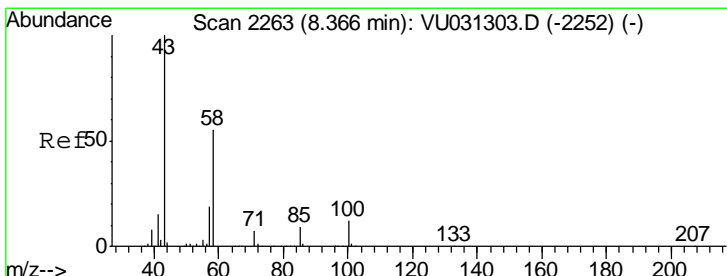
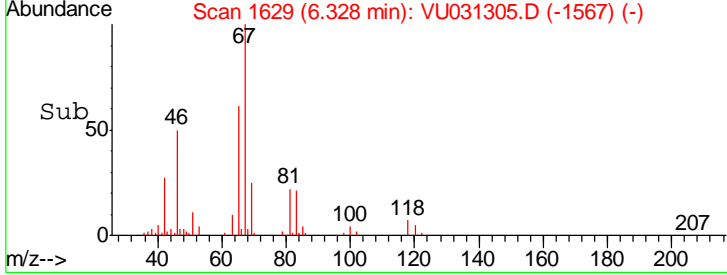
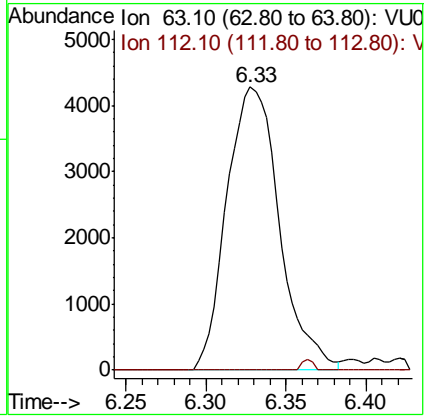
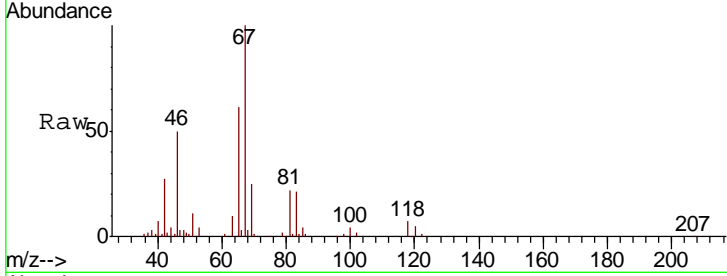




#37
 1,2-Dichloropropane
 Concen: 0.526 ug/L
 RT: 6.33 min Scan# 1629
 Delta R.T. -0.10 min
 Lab File: VU031305.D
 Acq: 18 Apr 2019 14:27

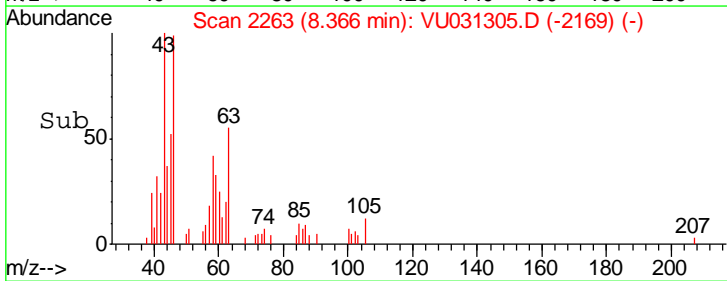
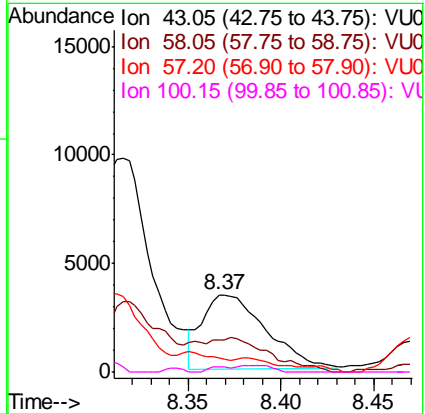
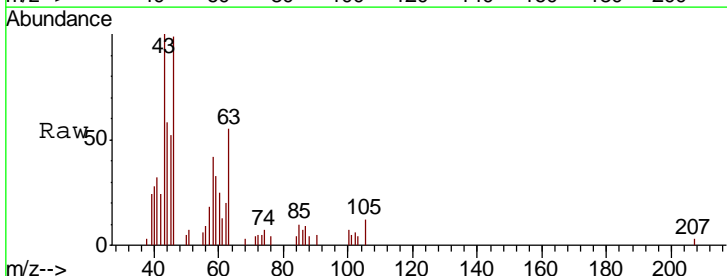
Instrument :
 MSVOA_U
ClientSampled :
 C0XD2

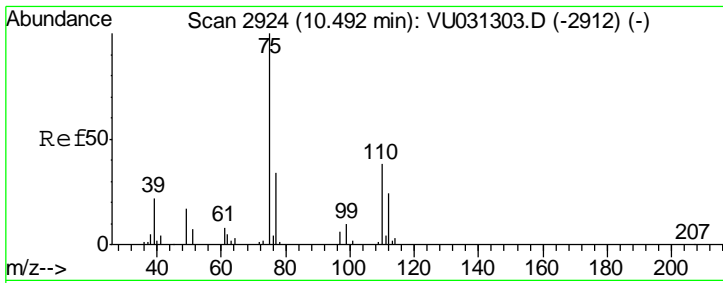
Tgt Ion: 63 Resp: 9648
 Ion Ratio Lower Upper
 63 100
 112 0.8 3.5 5.3#



#48
 2-Hexanone
 Concen: 0.975 ug/L
 RT: 8.37 min Scan# 2263
 Delta R.T. 0.00 min
 Lab File: VU031305.D
 Acq: 18 Apr 2019 14:27

Tgt Ion: 43 Resp: 8148
 Ion Ratio Lower Upper
 43 100
 58 41.1 45.0 67.6#
 57 0.0 15.5 23.3#
 100 2.5 8.7 13.1#





#59
 1,2,3-Trichloropropane
 Concen: 0.823 ug/L
 RT: 11.48 min Scan# 3232
 Delta R.T. 0.99 min
 Lab File: VU031305.D
 Acq: 18 Apr 2019 14:27

Instrument : MSVOA_U
 ClientSampled : C0XD2

Tgt Ion	Resp	Lower	Upper
75	9851		
75	100		
77	38.5	27.0	40.6

