

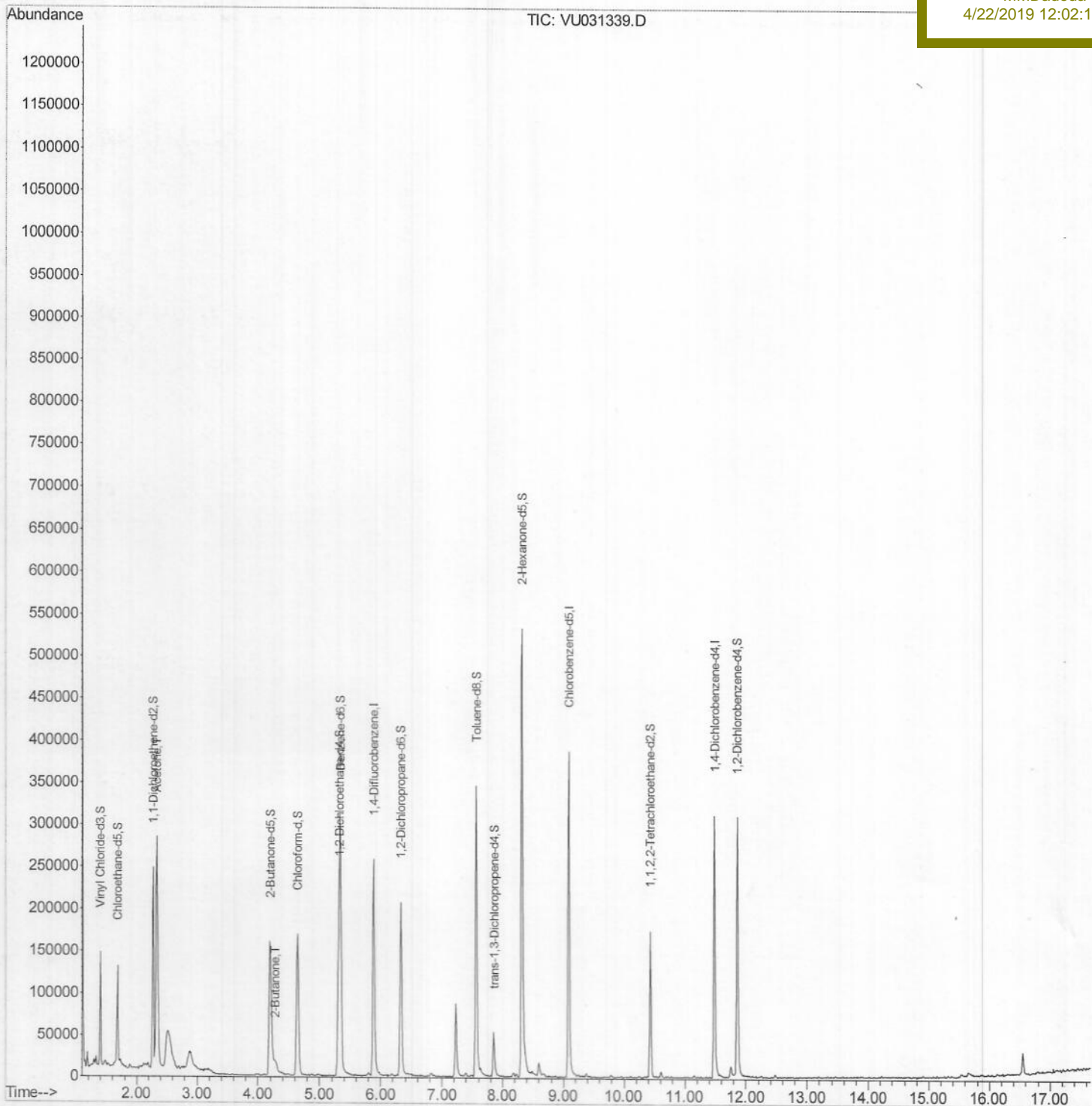
Data Path : Z:\VOASRV\HPCHEM1\MSVOA U\DATA\VU041919\  
 Data File : VU031339.D  
 Acq On : 19 Apr 2019 06:03  
 Operator : JC/SP  
 Sample : K2451-15  
 Misc : 25.0mL/MSVOA U/WATER  
 ALS Vial : 47 Sample Multiplier: 1

Quant Time: Apr 19 08:31:26 2019  
 Quant Method : Z:\VOASRV\HPCHEM1\MSVOA\_U\METHOD\SOMUTR041919WMA.M  
 Quant Title : TRACE VOA SOM01.0  
 QLast Update : Fri Apr 19 07:47:43 2019  
 Response via : Initial Calibration

Instrument :  
 MSVOA\_U  
 Client Sampled :  
 YAMY4

Manual Integrations  
 APPROVED

MMDadoda  
 4/22/2019 12:02:19 PM



Data Path : Z:\voasrv\HPCHEM1\MSVOA U\Data\VU041919\

Data File : VU031339.D

Acq On : 19 Apr 2019 06:03

Operator : JC/SP

Sample : K2451-15

Misc : 25.0mL/MSVOA U/WATER

ALS Vial : 47 Sample Multiplier: 1

Quant Time: Apr 27 00:22:52 2019

Quant Method : Z:\VOASRV\HPCHEM1\MSVOA\_U\METHOD\SOMUTR041919WMA.M

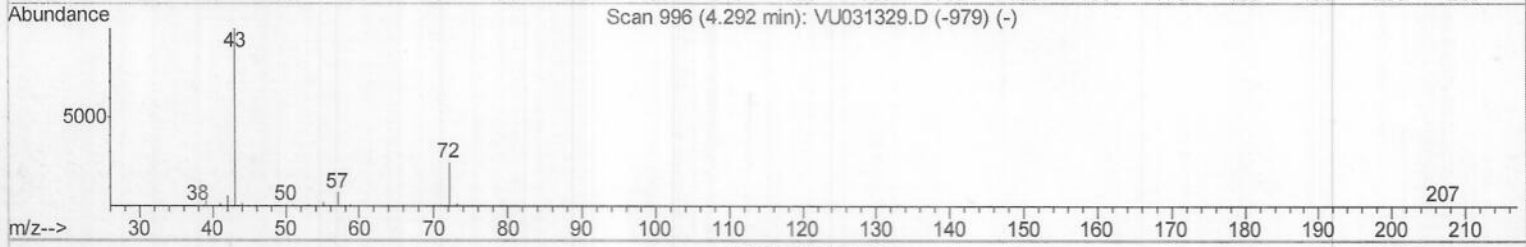
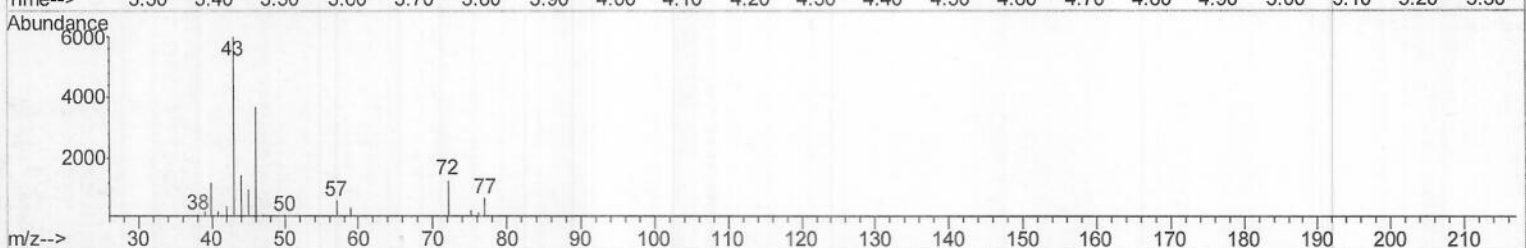
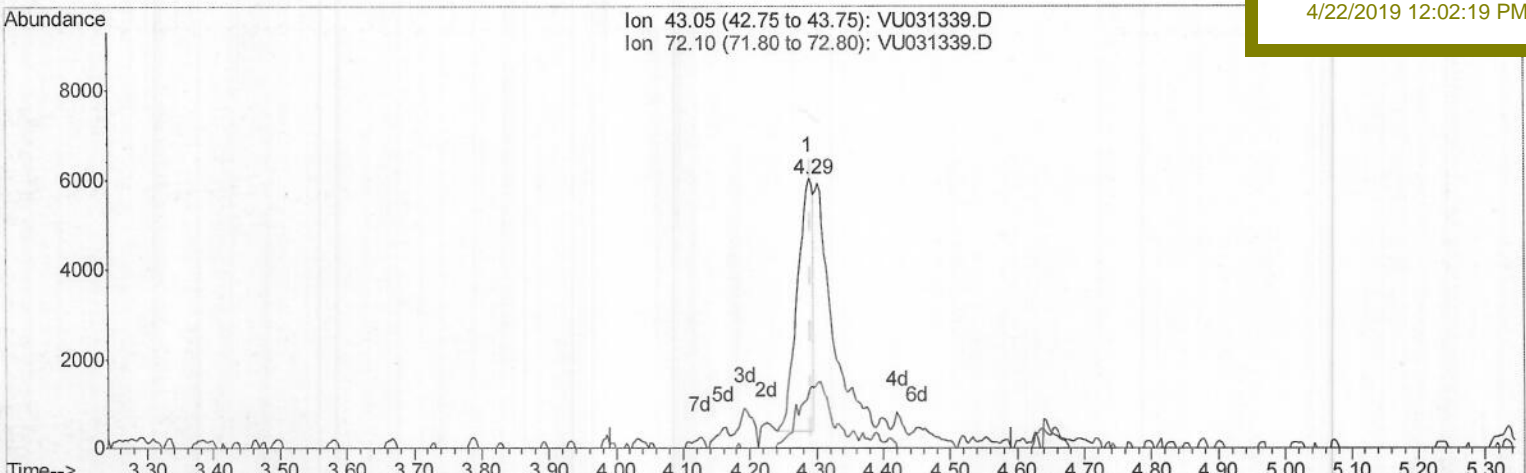
Quant Title : TRACE VOA SOM01.0

QLast Update : Sat Apr 27 00:12:05 2019

Response via : Initial Calibration

Instrument :  
MSVOA\_U  
Client Sampled :  
YAMY4

Manual Integrations  
**APPROVED**  
MMDadoda  
4/22/2019 12:02:19 PM



TIC: VU031339.D

(21) 2-Butanone (T)

4.289min (-0.003) 1.69ug/L

response 9223

Ion	Exp%	Act%
43.05	100	100
72.10	23.60	39.78#
0.00	0.00	0.00
0.00	0.00	0.00

Quantitation Report (Qedit)

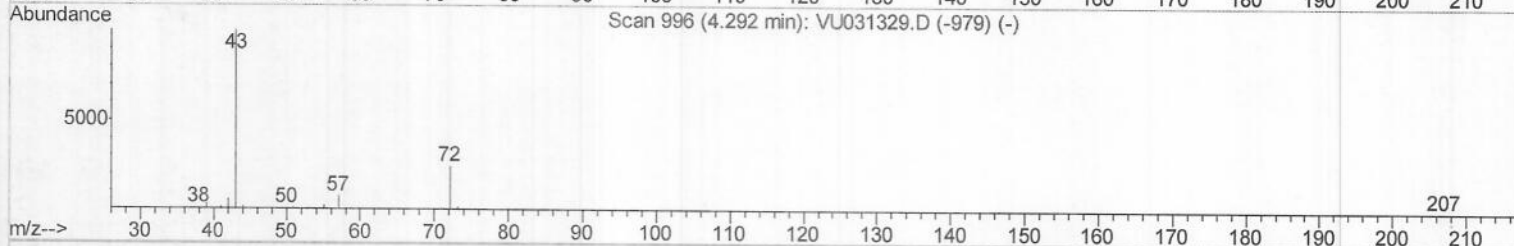
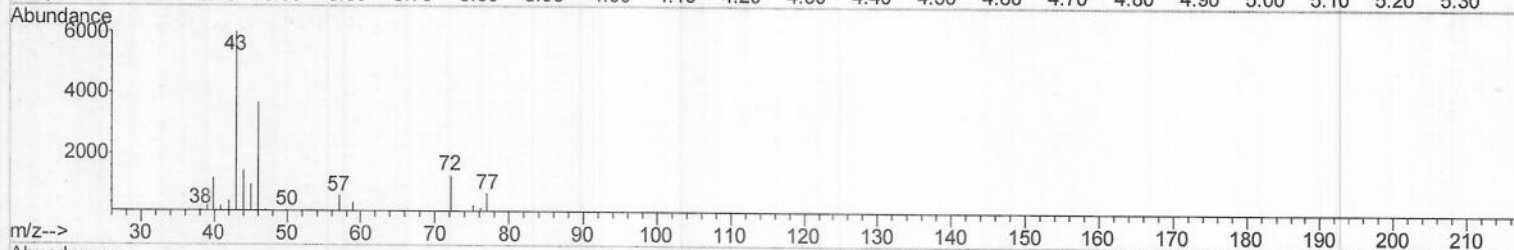
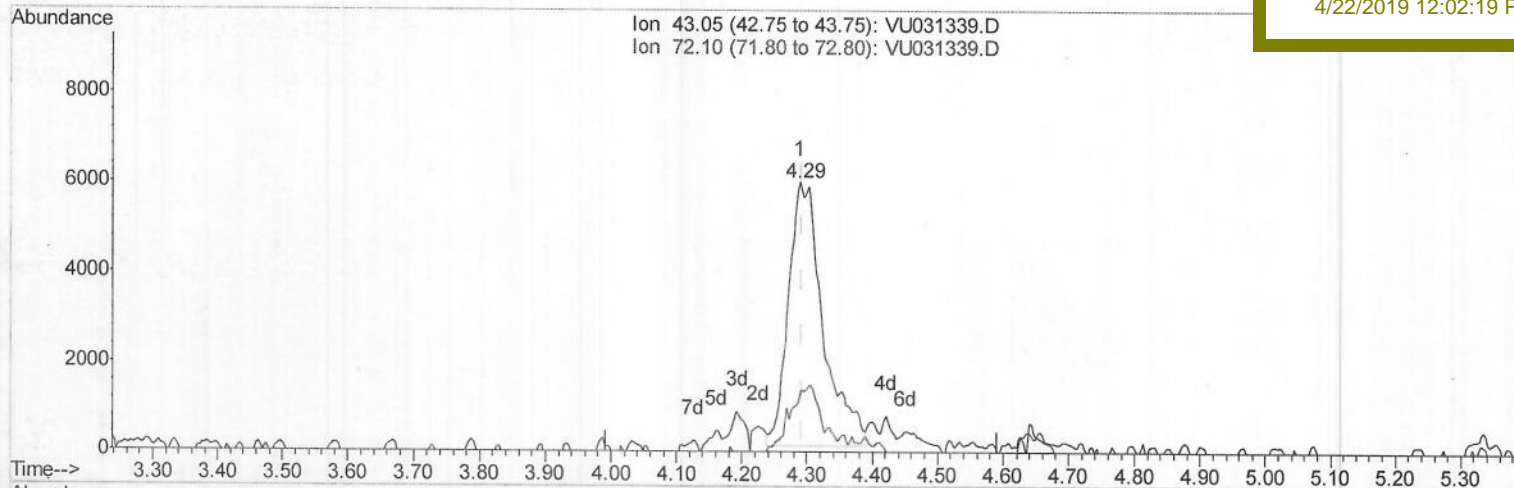
Data Path : Z:\voasrv\HPCHEM1\MSVOA U\Data\VU041919\  
 Data File : VU031339.D  
 Acq On : 19 Apr 2019 06:03  
 Operator : JC/SP  
 Sample : K2451-15  
 Misc : 25.0mL/MSVOA U/WATER  
 ALS Vial : 47 Sample Multiplier: 1

Instrument :  
 MSVOA\_U  
 ClientSampled :  
 YAMY4

Quant Time: Apr 19 08:31:26 2019  
 Quant Method : Z:\VOASRV\HPCHEM1\MSVOA\_U\METHOD\SOMUTR041919WMA.M  
 Quant Title : TRACE VOA SOM01.0  
 QLast Update : Fri Apr 19 07:47:43 2019  
 Response via : Initial Calibration

Manual Integrations  
 APPROVED

MMDadoda  
 4/22/2019 12:02:19 PM



TIC: VU031339.D

(21) 2-Butanone (T)

4.289min (-0.003) 3.96ug/L m

response 21609

Ion	Exp%	Act%
43.05	100	100
72.10	23.60	16.98
0.00	0.00	0.00
0.00	0.00	0.00

*M.D*  
*4/27/19*



Data Path : Z:\VOASRV\HPCHEM1\MSVOA U\DATA\VU041919\  
 Data File : VU031339.D  
 Acq On : 19 Apr 2019 06:03  
 Operator : JC/SP  
 Sample : K2451-15  
 Misc : 25.0mL/MSVOA U/WATER  
 ALS Vial : 47 Sample Multiplier: 1

Quant Time: Apr 19 08:31:26 2019  
 Quant Method : Z:\VOASRV\HPCHEM1\MSVOA\_U\METHOD\SOMUTR041919WMA.M  
 Quant Title : TRACE VOA SOM01.0  
 QLast Update : Fri Apr 19 07:47:43 2019  
 Response via : Initial Calibration

Instrument :  
 MSVOA\_U  
 Client Sampled :  
 YAMY4

Manual Integrations  
 APPROVED

MMDadoda  
 4/22/2019 12:02:19 PM

Internal Standards	R.T.	QIon	Response	Conc	Units	Dev (Min)
1) 1,4-Difluorobenzene	5.88	114	221416	5.00	ug/L	0.00
28) Chlorobenzene-d5	9.09	117	231493	5.00	ug/L	0.00
60) 1,4-Dichlorobenzene-d4	11.48	152	86227	5.00	ug/L	0.00

System Monitoring Compounds

4) Vinyl Chloride-d3	1.40	65	94188	3.77	ug/L	0.00
Spiked Amount	5.000	Range	40 - 130	Recovery	=	75.40%
7) Chloroethane-d5	1.68	69	79277	3.99	ug/L	0.00
Spiked Amount	5.000	Range	65 - 130	Recovery	=	79.80%
11) 1,1-Dichloroethene-d2	2.27	63	139325	2.85	ug/L	0.00
Spiked Amount	5.000	Range	60 - 125	Recovery	=	57.00%#
20) 2-Butanone-d5	4.20	46	289153	60.59	ug/L	0.00
Spiked Amount	50.000	Range	40 - 130	Recovery	=	121.18%
24) Chloroform-d	4.64	84	172719	5.54	ug/L	0.00
Spiked Amount	5.000	Range	70 - 125	Recovery	=	110.80%
26) 1,2-Dichloroethane-d4	5.31	65	94154	5.59	ug/L	0.00
Spiked Amount	5.000	Range	70 - 130	Recovery	=	111.80%
32) Benzene-d6	5.34	84	318500	4.94	ug/L	0.00
Spiked Amount	5.000	Range	70 - 125	Recovery	=	98.80%
36) 1,2-Dichloropropane-d6	6.33	67	105982	5.23	ug/L	0.00
Spiked Amount	5.000	Range	60 - 140	Recovery	=	104.60%
41) Toluene-d8	7.56	98	240801	4.18	ug/L	0.00
Spiked Amount	5.000	Range	70 - 130	Recovery	=	83.60%
43) trans-1,3-Dichloropropene-	7.85	79	32073	3.95	ug/L	0.00
Spiked Amount	5.000	Range	55 - 130	Recovery	=	79.00%
46) 2-Hexanone-d5	8.31	63	172523	45.95	ug/L	0.00
Spiked Amount	50.000	Range	45 - 130	Recovery	=	91.90%
57) 1,1,2,2-Tetrachloroethane-	10.43	84	88006	5.18	ug/L	0.00
Spiked Amount	5.000	Range	65 - 120	Recovery	=	103.60%
64) 1,2-Dichlorobenzene-d4	11.86	152	86050	5.12	ug/L	0.00
Spiked Amount	5.000	Range	80 - 120	Recovery	=	102.40%

Target Compounds

13) Acetone	2.33	43	363480	68.463	ug/L	98
21) 2-Butanone	4.29	43	21609m	3.960	ug/L	

*M.D.*  
 4/27/19

(#) = qualifier out of range (m) = manual integration (+) = signals summed