

Data Path : Z:\voasrv\HPCHEM1\MSVOA_U\Data\VU041921\
 Data File : VU043205.D
 Acq On : 19 Apr 2021 19:30
 Operator : SY/MD
 Sample : PB135814ZHE#08
 Misc : 5.0mL/MSVOA_U/WATER
 ALS Vial : 22 Sample Multiplier: 1

Instrument :
 MSVOA_U
 ClientSampled :

Quant Time: Apr 20 02:59:08 2021
 Quant Method : Z:\voasrv\HPCHEM1\MSVOA_U\Method\82U041221W.M
 Quant Title : SW846 8260
 QLast Update : Mon Apr 12 13:17:29 2021
 Response via : Initial Calibration

Compound	R.T.	QIon	Response	Conc	Units	Dev(Min)

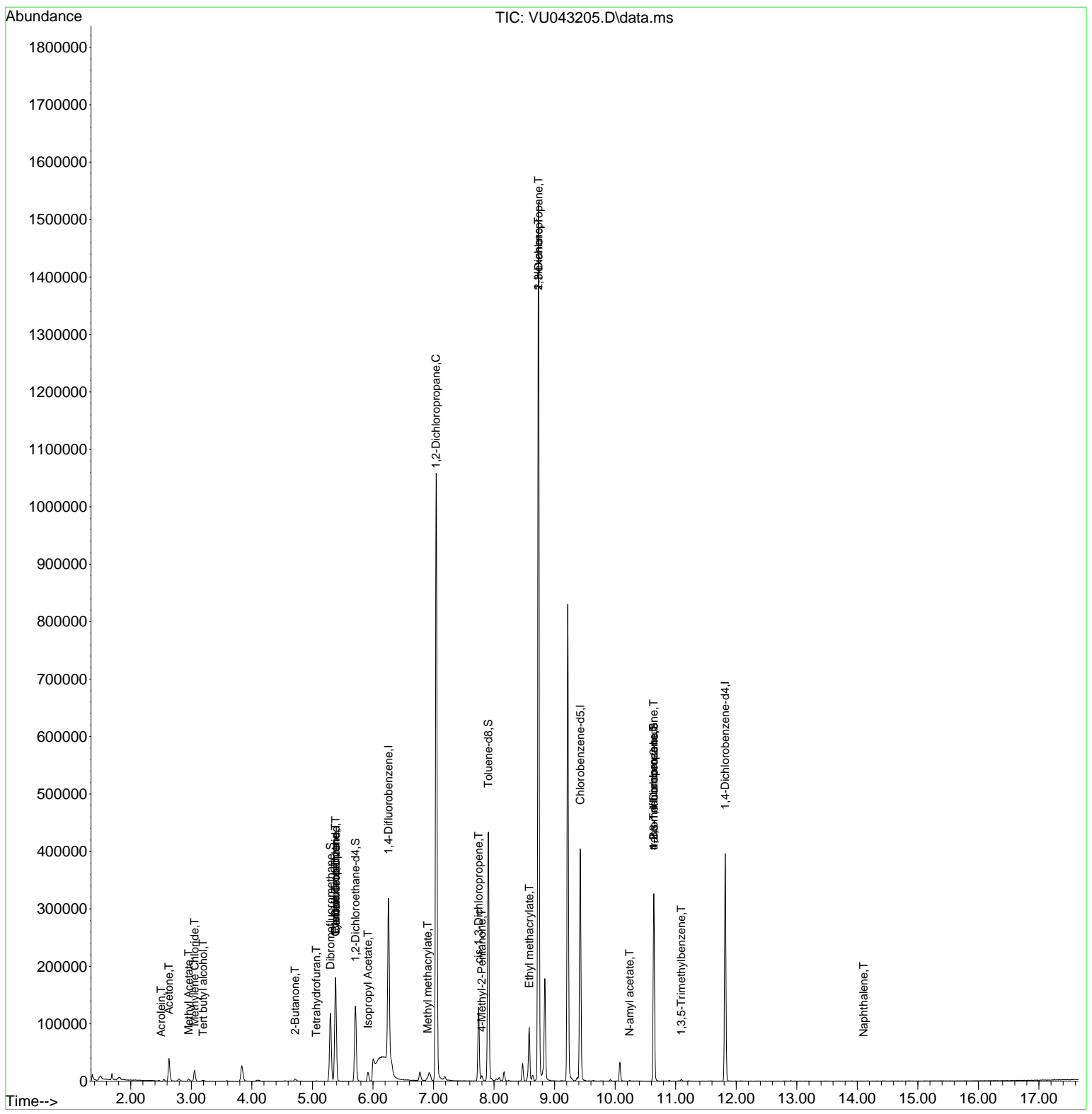
Internal Standards						
1) Pentafluorobenzene	5.382	168	121252	50.00	ug/l	0.00
34) 1,4-Difluorobenzene	6.256	114	206702	50.00	ug/l	0.00
63) Chlorobenzene-d5	9.423	117	201645	50.00	ug/l	0.00
72) 1,4-Dichlorobenzene-d4	11.819	152	95163	50.00	ug/l	0.00
System Monitoring Compounds						
33) 1,2-Dichloroethane-d4	5.710	65	102339	50.21	ug/l	0.00
Spiked Amount	50.000		Recovery	=	100.42%	
35) Dibromofluoromethane	5.298	113	70914	45.66	ug/l	0.00
Spiked Amount	50.000		Recovery	=	91.32%	
50) Toluene-d8	7.906	98	260050	47.32	ug/l	0.00
Spiked Amount	50.000		Recovery	=	94.64%	
62) 4-Bromofluorobenzene	10.639	95	94577	42.97	ug/l	0.00
Spiked Amount	50.000		Recovery	=	85.94%	
Target Compounds						
						Qvalue
3) Chloromethane	1.520	50	457	Below Cal	#	41
11) Tert butyl alcohol	3.195	59	1549	2.95	ug/l #	94
13) Acrolein	2.501	56	19	10.47	ug/l #	1
16) Acetone	2.629	43	47564	39.39	ug/l	98
18) Methyl Acetate	2.954	43	5434	2.13	ug/l	95
20) Methylene Chloride	3.054	84	8129	5.62	ug/l	92
25) 2-Butanone	4.713	43	6613	3.57	ug/l	95
29) Tetrahydrofuran	5.063	42	366	0.31	ug/l #	68
31) Cyclohexane	5.378	56	2959	1.18	ug/l #	33
36) 1,1-Dichloropropene	5.378	75	9737	4.44	ug/l #	47
38) Carbon Tetrachloride	5.382	117	11834	5.03	ug/l #	17
43) Isopropyl Acetate	5.919	43	16926	3.17	ug/l	95
45) 1,2-Dichloropropane	7.041	63	1121	0.64	ug/l #	43
48) Methyl methacrylate	6.902	41	6413	2.39	ug/l #	17
51) 4-Methyl-2-Pentanone	7.796	43	5773	1.46	ug/l	97
54) cis-1,3-Dichloropropene	7.745	75	18488	6.73	ug/l #	71
56) Ethyl methacrylate	8.584	69	688	0.25	ug/l #	1
57) 1,3-Dichloropropane	8.735	76	13696	4.76	ug/l #	43
59) 2-Hexanone	8.732	43	237299	72.84	ug/l #	54
74) N-amyl acetate	10.240	43	950	0.23	ug/l #	48
76) 1,2,3-Trichloropropane	10.639	75	54855	19.73	ug/l #	37
80) 1,3,5-Trimethylbenzene	11.092	105	1889	0.34	ug/l	92
81) trans-1,4-Dichloro-2-b...	10.639	75	54855	57.96	ug/l #	7
95) Naphthalene	14.105	128	19	2.74	ug/l #	69

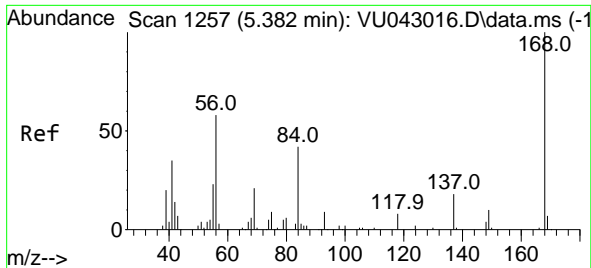
(#) = qualifier out of range (m) = manual integration (+) = signals summed

Data Path : Z:\voasrv\HPCHEM1\MSVOA_U\Data\VU041921\
 Data File : VU043205.D
 Acq On : 19 Apr 2021 19:30
 Operator : SY/MD
 Sample : PB135814ZHE#08
 Misc : 5.0mL/MSVOA_U/WATER
 ALS Vial : 22 Sample Multiplier: 1

Instrument :
 MSVOA_U
 ClientSampleId :

Quant Time: Apr 20 02:59:08 2021
 Quant Method : Z:\voasrv\HPCHEM1\MSVOA_U\Method\82U041221W.M
 Quant Title : SW846 8260
 QLast Update : Mon Apr 12 13:17:29 2021
 Response via : Initial Calibration

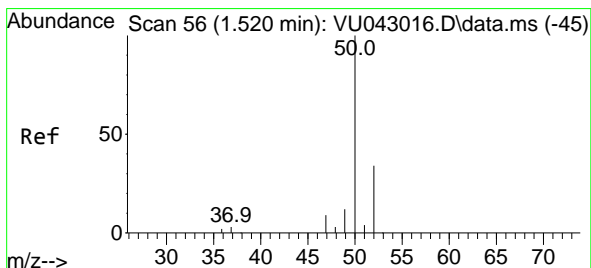
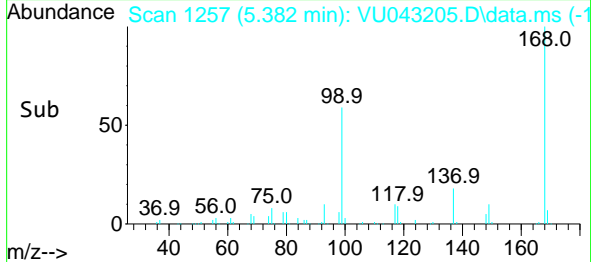
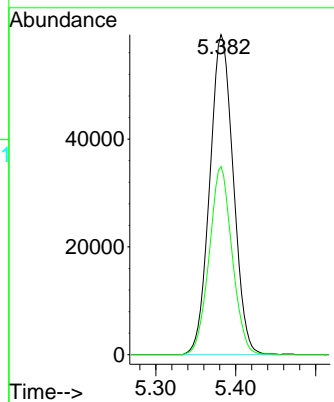
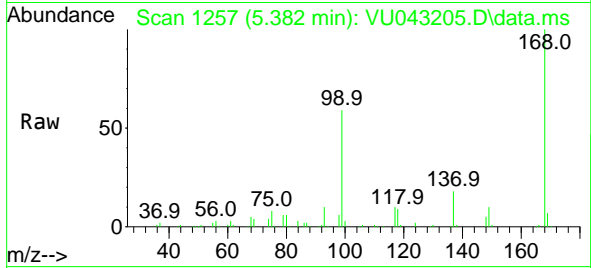




#1
 Pentafluorobenzene
 Concen: 50.00 ug/l
 RT: 5.382 min Scan# 1257
 Delta R.T. -0.000 min
 Lab File: VU043205.D
 Acq: 19 Apr 2021 19:30

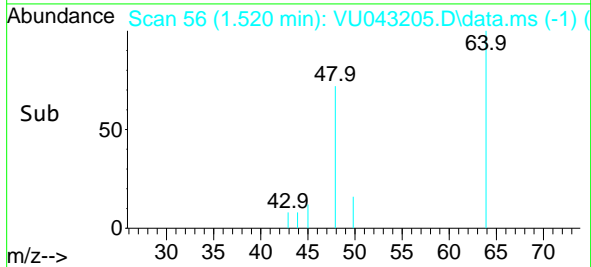
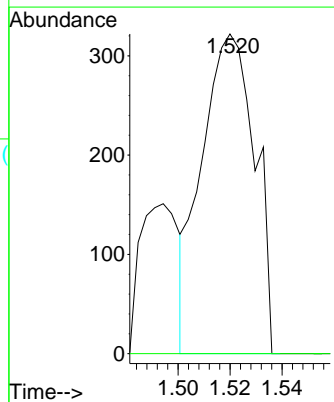
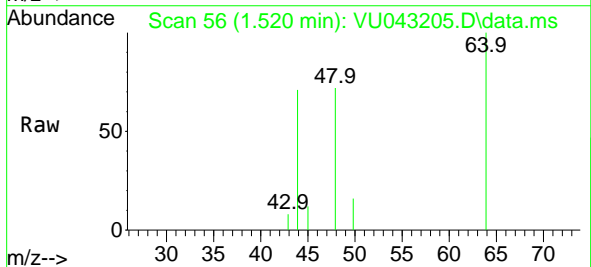
Instrument :
 MSVOA_U
 ClientSampled :

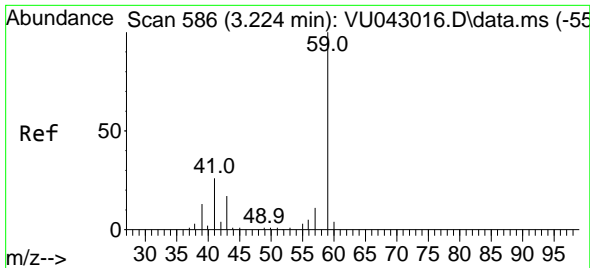
Tgt Ion:168 Resp: 121252
 Ion Ratio Lower Upper
 168 100
 99 58.8 45.0 67.4



#3
 Chloromethane
 Concen: Below Cal
 RT: 1.520 min Scan# 56
 Delta R.T. -0.000 min
 Lab File: VU043205.D
 Acq: 19 Apr 2021 19:30

Tgt Ion: 50 Resp: 457
 Ion Ratio Lower Upper
 50 100
 52 0.0 26.6 40.0#

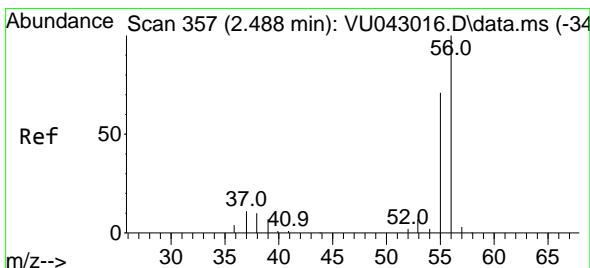
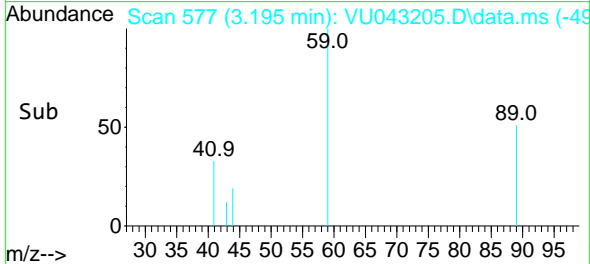
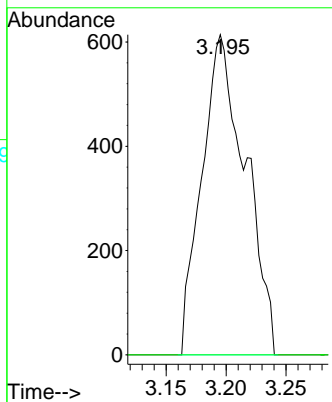
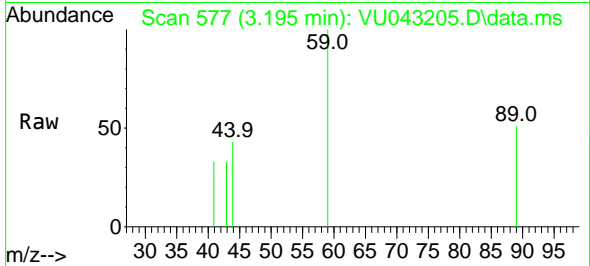




#11
 Tert butyl alcohol
 Concen: 2.95 ug/l
 RT: 3.195 min Scan# 577
 Delta R.T. -0.029 min
 Lab File: VU043205.D
 Acq: 19 Apr 2021 19:30

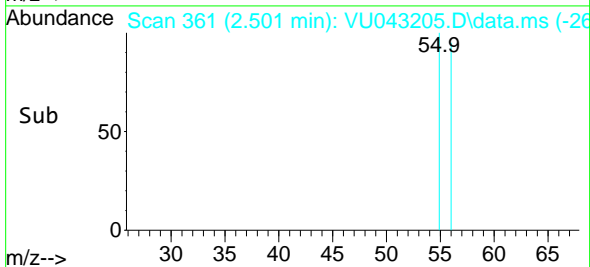
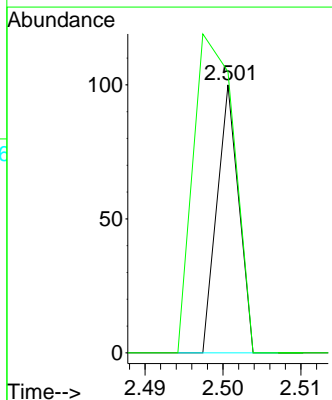
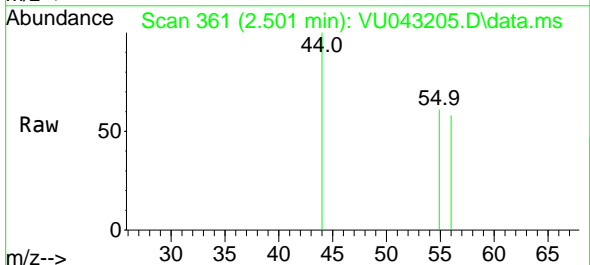
Instrument :
 MSVOA_U
 ClientSampled :

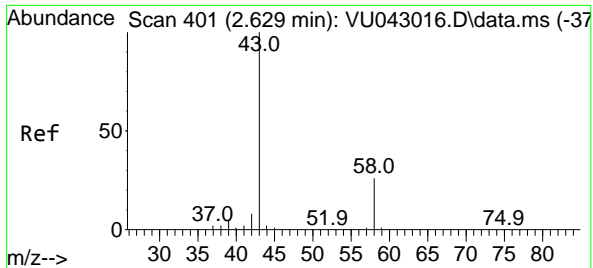
Tgt Ion: 59 Resp: 1549
 Ion Ratio Lower Upper
 59 100
 57 0.0 1.6 2.4#



#13
 Acrolein
 Concen: 10.47 ug/l
 RT: 2.501 min Scan# 361
 Delta R.T. 0.013 min
 Lab File: VU043205.D
 Acq: 19 Apr 2021 19:30

Tgt Ion: 56 Resp: 19
 Ion Ratio Lower Upper
 56 100
 55 226.3 57.3 85.9#

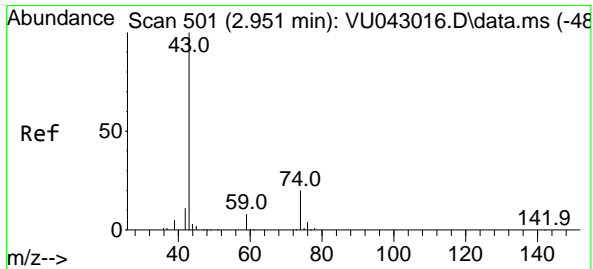
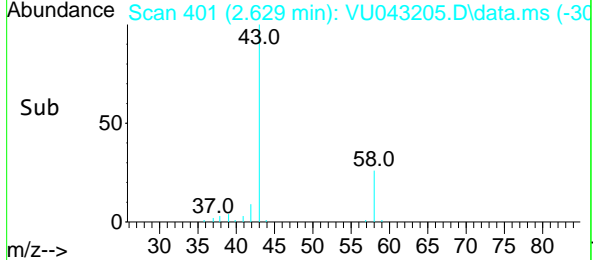
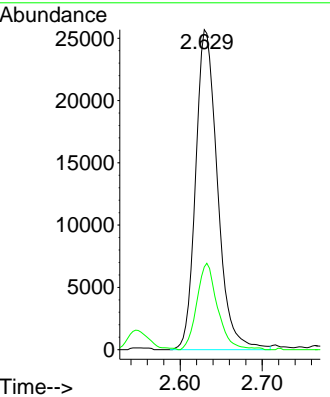
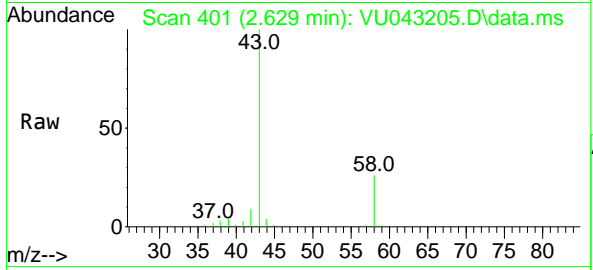




#16
 Acetone
 Concen: 39.39 ug/l
 RT: 2.629 min Scan# 401
 Delta R.T. 0.000 min
 Lab File: VU043205.D
 Acq: 19 Apr 2021 19:30

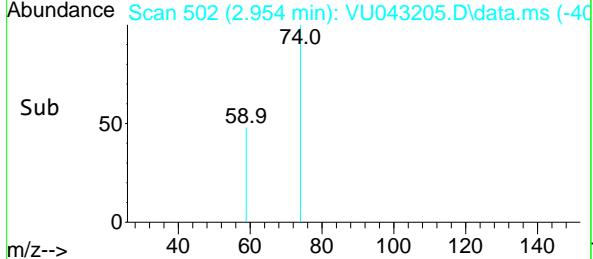
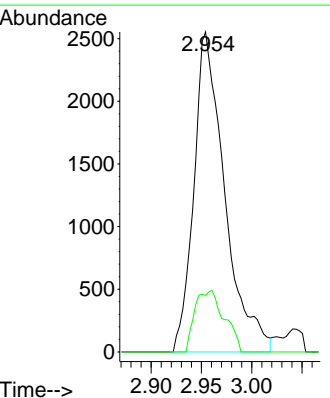
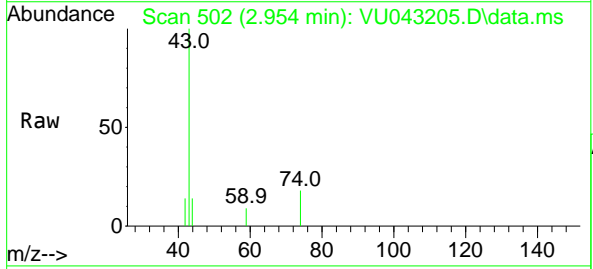
Instrument :
 MSVOA_U
 ClientSampled :

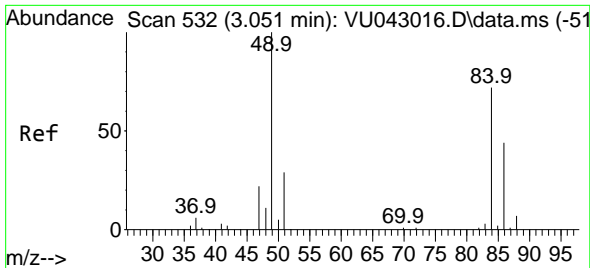
Tgt Ion: 43 Resp: 47564
 Ion Ratio Lower Upper
 43 100
 58 25.8 21.5 32.3



#18
 Methyl Acetate
 Concen: 2.13 ug/l
 RT: 2.954 min Scan# 502
 Delta R.T. 0.003 min
 Lab File: VU043205.D
 Acq: 19 Apr 2021 19:30

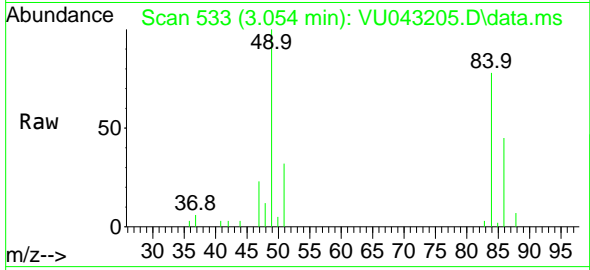
Tgt Ion: 43 Resp: 5434
 Ion Ratio Lower Upper
 43 100
 74 18.3 16.6 25.0





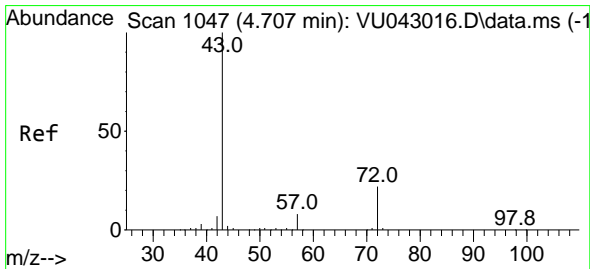
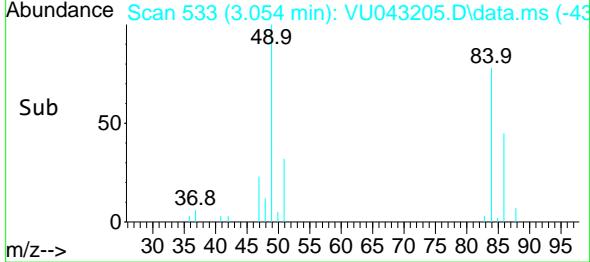
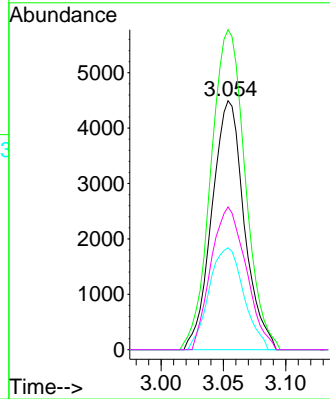
#20
 Methylene Chloride
 Concen: 5.62 ug/l
 RT: 3.054 min Scan# 533
 Delta R.T. 0.003 min
 Lab File: VU043205.D
 Acq: 19 Apr 2021 19:30

Instrument :
 MSVOA_U
 ClientSampled :

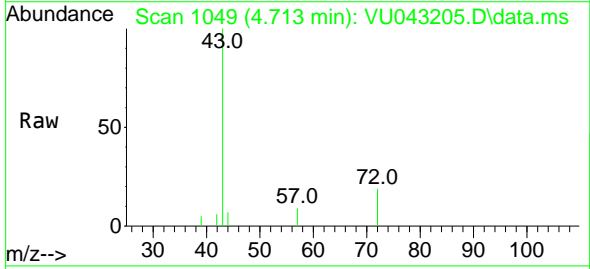


Tgt Ion: 84 Resp: 8129

Ion	Ratio	Lower	Upper
84	100		
49	128.5	112.6	169.0
51	40.9	33.7	50.5
86	57.3	51.7	77.5

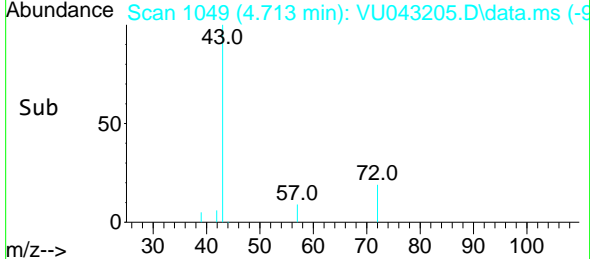
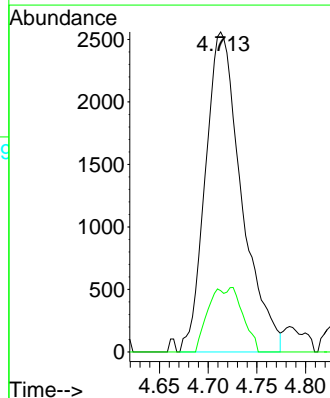


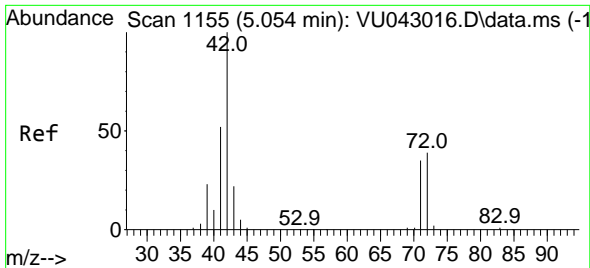
#25
 2-Butanone
 Concen: 3.57 ug/l
 RT: 4.713 min Scan# 1049
 Delta R.T. 0.006 min
 Lab File: VU043205.D
 Acq: 19 Apr 2021 19:30



Tgt Ion: 43 Resp: 6613

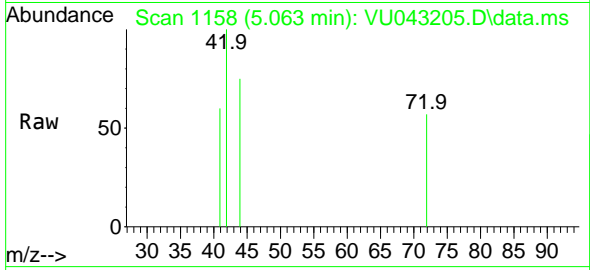
Ion	Ratio	Lower	Upper
43	100		
72	19.1	17.4	26.0





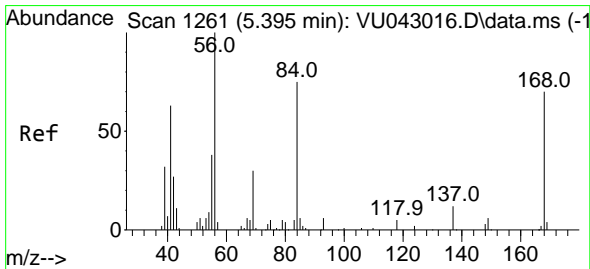
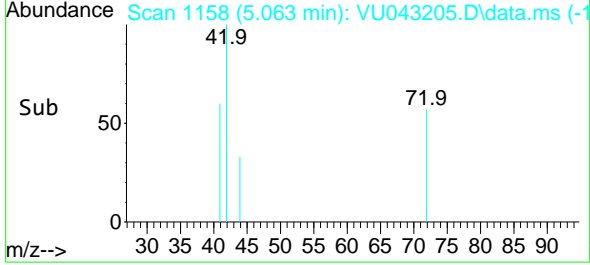
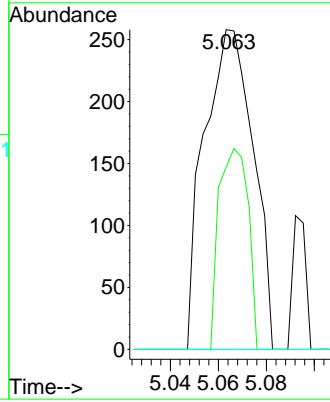
#29
 Tetrahydrofuran
 Concen: 0.31 ug/l
 RT: 5.063 min Scan# 1158
 Delta R.T. 0.009 min
 Lab File: VU043205.D
 Acq: 19 Apr 2021 19:30

Instrument :
 MSVOA_U
 ClientSampled :

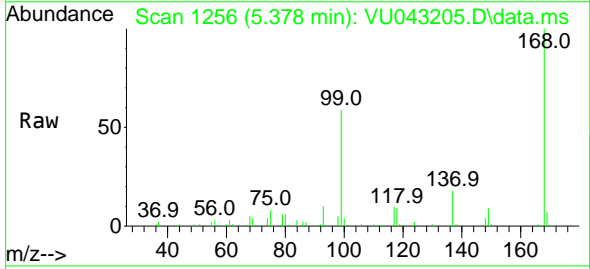


Tgt Ion: 42 Resp: 366

Ion	Ratio	Lower	Upper
42	100		
72	37.4	31.5	47.3
71	0.0	29.5	44.3#

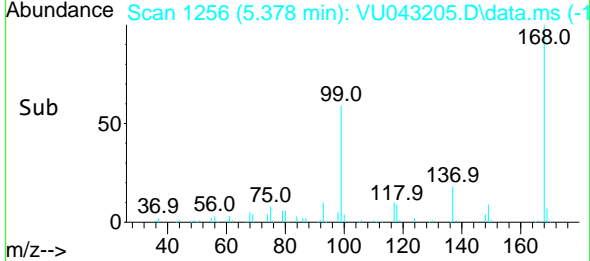
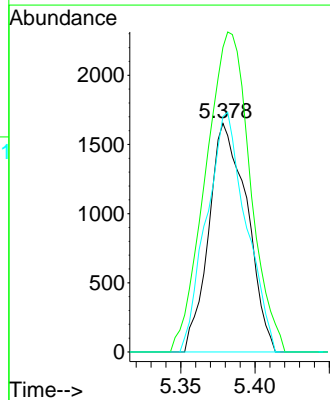


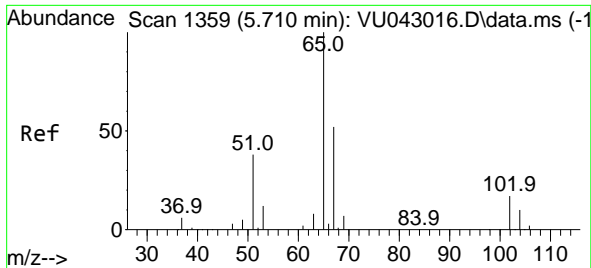
#31
 Cyclohexane
 Concen: 1.18 ug/l
 RT: 5.378 min Scan# 1256
 Delta R.T. -0.017 min
 Lab File: VU043205.D
 Acq: 19 Apr 2021 19:30



Tgt Ion: 56 Resp: 2959

Ion	Ratio	Lower	Upper
56	100		
69	125.8	24.9	37.3#
84	102.9	63.7	95.5#

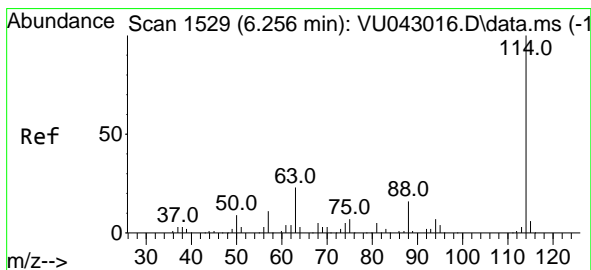
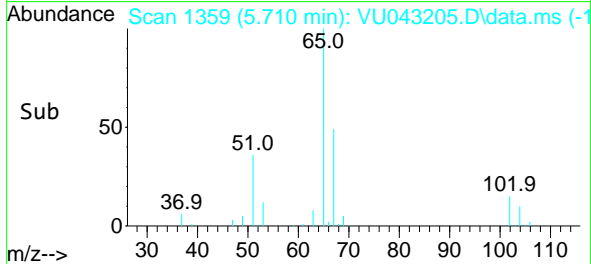
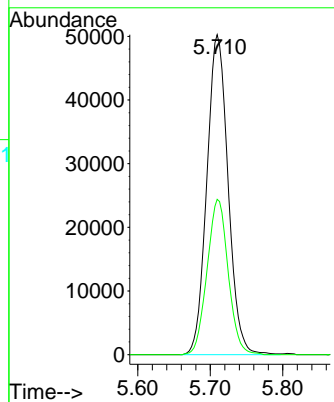
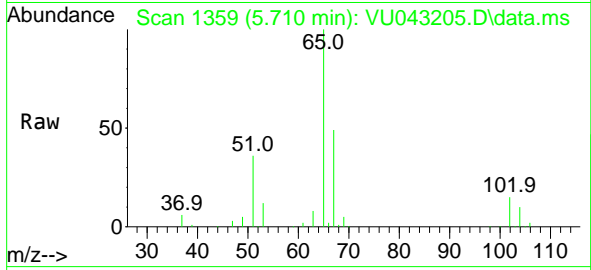




#33
 1,2-Dichloroethane-d4
 Concen: 50.21 ug/l
 RT: 5.710 min Scan# 1359
 Delta R.T. -0.000 min
 Lab File: VU043205.D
 Acq: 19 Apr 2021 19:30

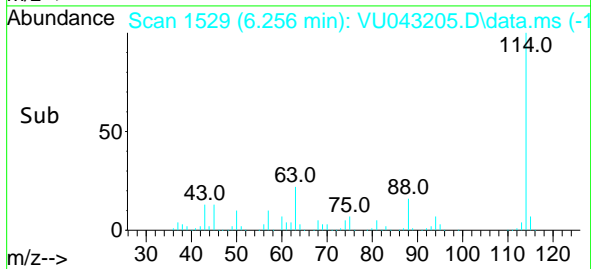
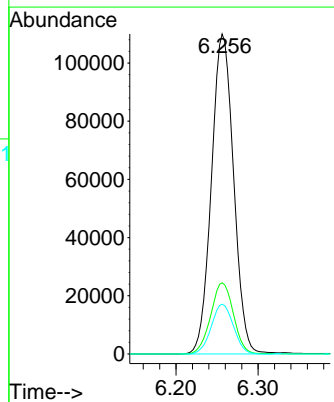
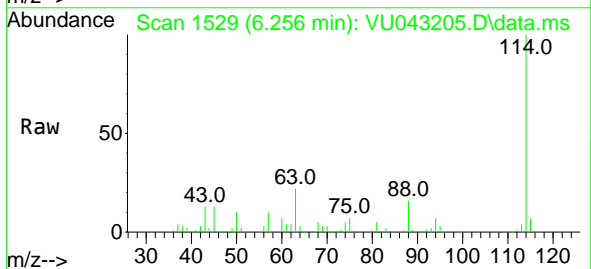
Instrument :
 MSVOA_U
 ClientSampled :

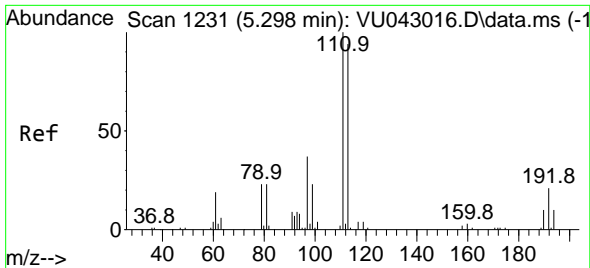
Tgt Ion: 65 Resp: 102339
 Ion Ratio Lower Upper
 65 100
 67 48.3 0.0 99.8



#34
 1,4-Difluorobenzene
 Concen: 50.00 ug/l
 RT: 6.256 min Scan# 1529
 Delta R.T. 0.000 min
 Lab File: VU043205.D
 Acq: 19 Apr 2021 19:30

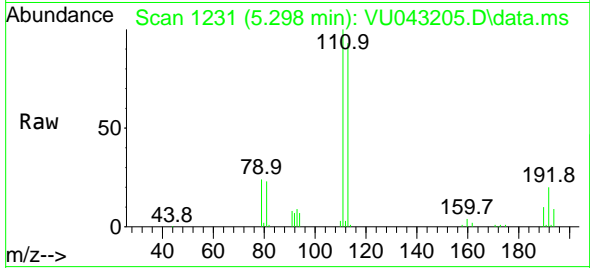
Tgt Ion:114 Resp: 206702
 Ion Ratio Lower Upper
 114 100
 63 22.3 0.0 44.2
 88 15.6 0.0 33.4



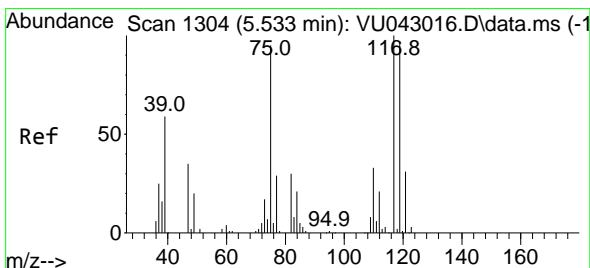
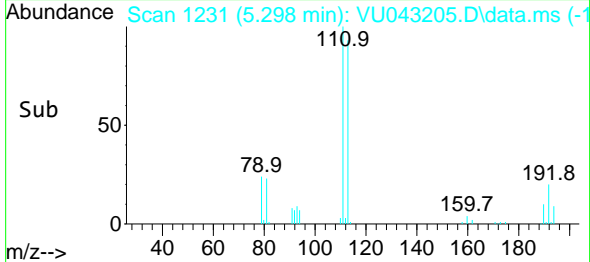
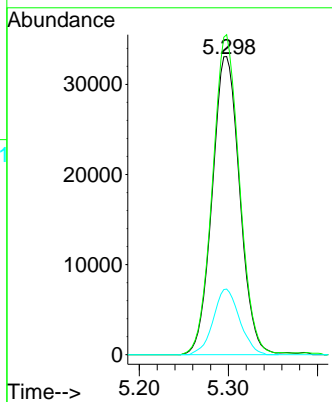


#35
 Dibromofluoromethane
 Concen: 45.66 ug/l
 RT: 5.298 min Scan# 1231
 Delta R.T. -0.000 min
 Lab File: VU043205.D
 Acq: 19 Apr 2021 19:30

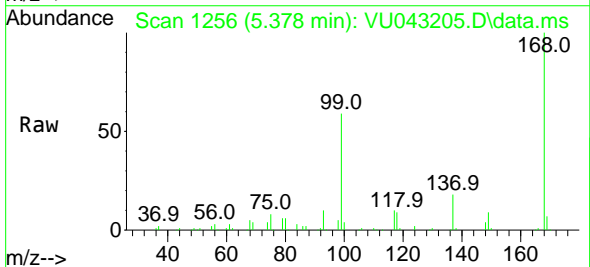
Instrument :
 MSVOA_U
 ClientSampled :



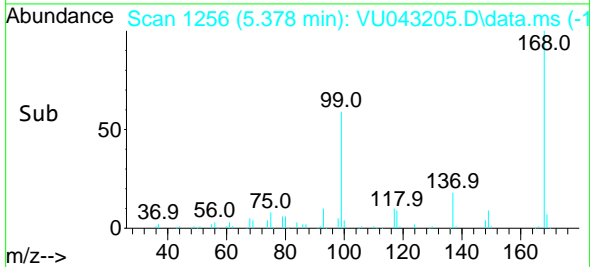
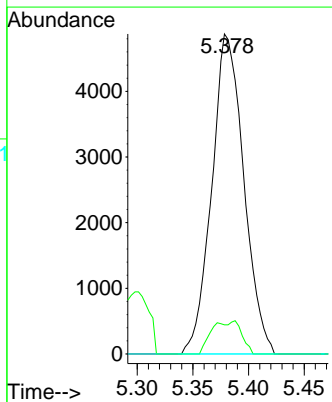
Tgt Ion:113 Resp: 70914
 Ion Ratio Lower Upper
 113 100
 111 105.7 81.8 122.8
 192 21.1 17.2 25.8

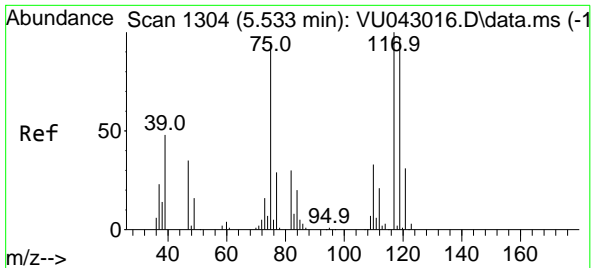


#36
 1,1-Dichloropropene
 Concen: 4.44 ug/l
 RT: 5.378 min Scan# 1256
 Delta R.T. -0.155 min
 Lab File: VU043205.D
 Acq: 19 Apr 2021 19:30



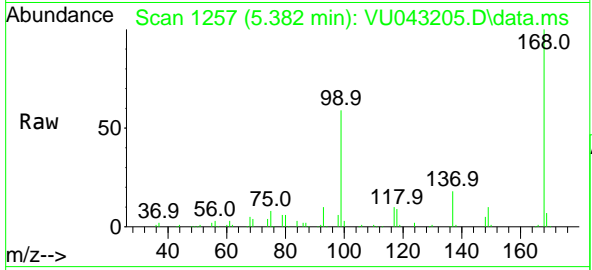
Tgt Ion: 75 Resp: 9737
 Ion Ratio Lower Upper
 75 100
 110 4.9 16.8 50.3#
 77 0.0 24.8 37.2#



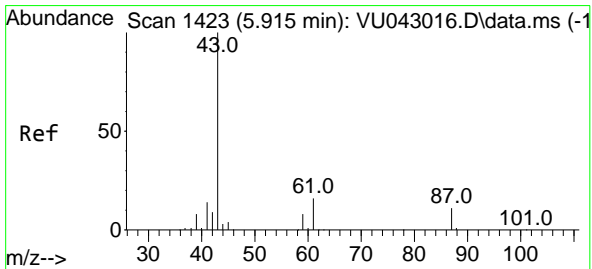
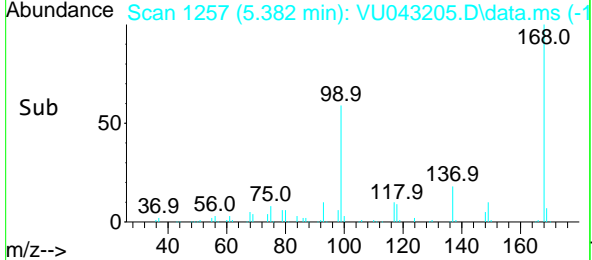
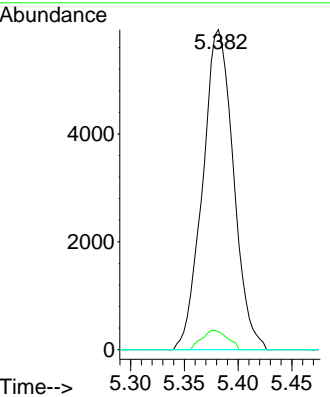


#38
 Carbon Tetrachloride
 Concen: 5.03 ug/l
 RT: 5.382 min Scan# 1257
 Delta R.T. -0.151 min
 Lab File: VU043205.D
 Acq: 19 Apr 2021 19:30

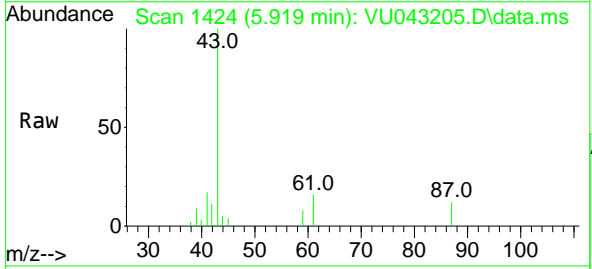
Instrument :
 MSVOA_U
 ClientSampled :



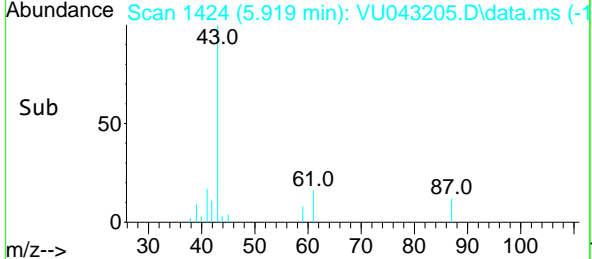
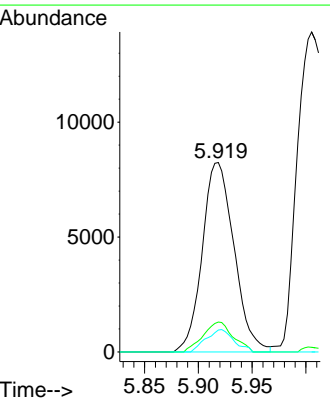
Tgt Ion: 117 Resp: 11834
 Ion Ratio Lower Upper
 117 100
 119 5.6 75.5 113.3#
 121 0.0 24.7 37.1#

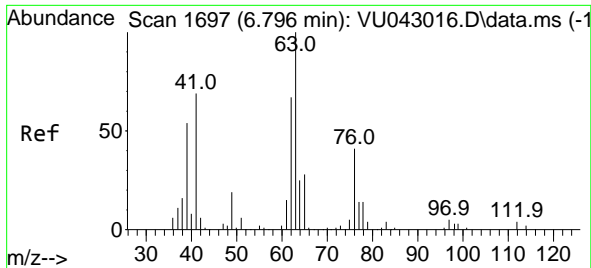


#43
 Isopropyl Acetate
 Concen: 3.17 ug/l
 RT: 5.919 min Scan# 1424
 Delta R.T. 0.004 min
 Lab File: VU043205.D
 Acq: 19 Apr 2021 19:30



Tgt Ion: 43 Resp: 16926
 Ion Ratio Lower Upper
 43 100
 61 14.8 14.4 21.6
 87 10.2 8.8 13.2

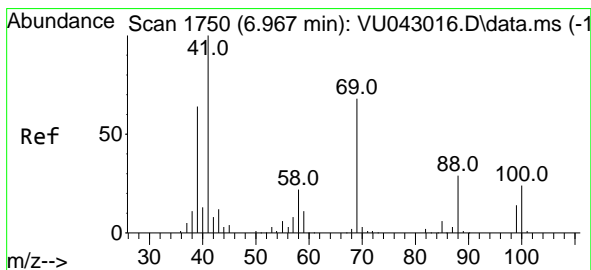
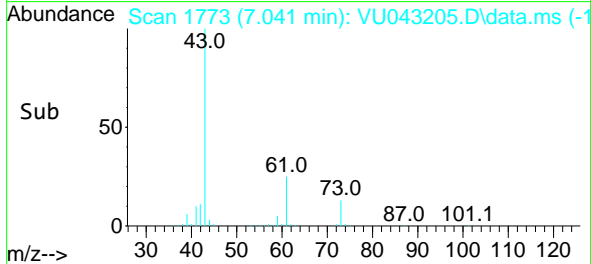
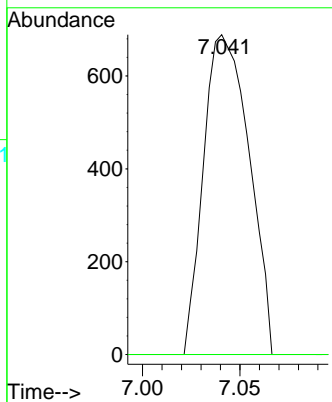
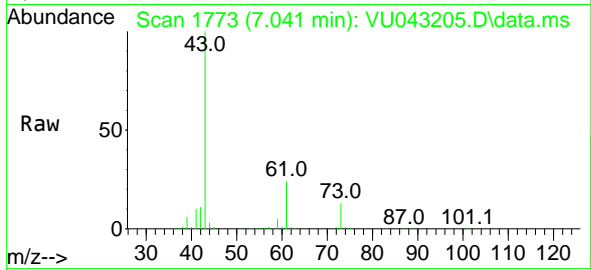




#45
 1,2-Dichloropropane
 Concen: 0.64 ug/l
 RT: 7.041 min Scan# 1773
 Delta R.T. 0.245 min
 Lab File: VU043205.D
 Acq: 19 Apr 2021 19:30

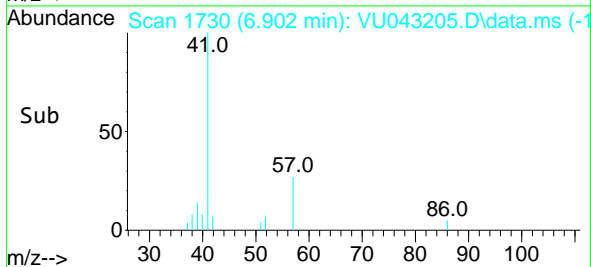
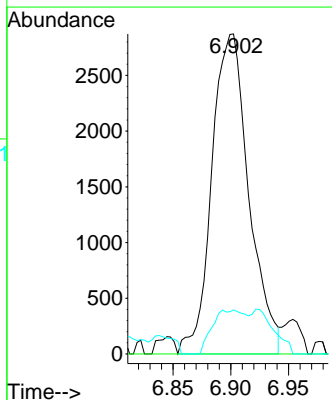
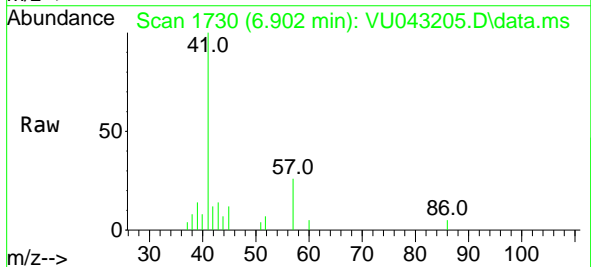
Instrument :
 MSVOA_U
 ClientSampled :

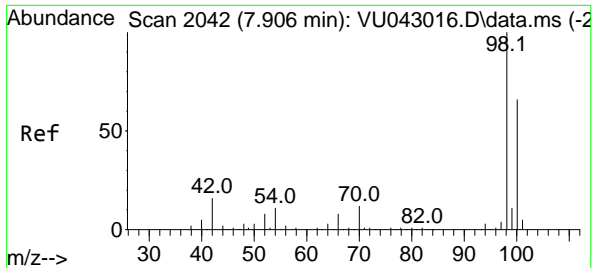
Tgt Ion: 63 Resp: 1121
 Ion Ratio Lower Upper
 63 100
 65 0.0 25.4 38.2#



#48
 Methyl methacrylate
 Concen: 2.39 ug/l
 RT: 6.902 min Scan# 1730
 Delta R.T. -0.065 min
 Lab File: VU043205.D
 Acq: 19 Apr 2021 19:30

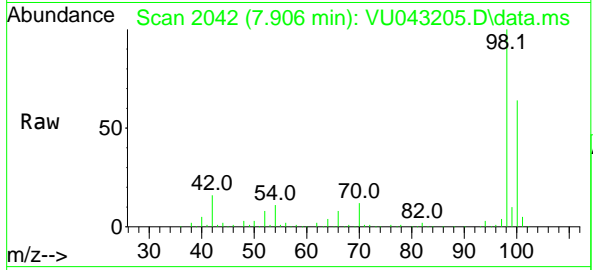
Tgt Ion: 41 Resp: 6413
 Ion Ratio Lower Upper
 41 100
 69 0.0 57.0 85.6#
 39 0.0 48.4 72.6#



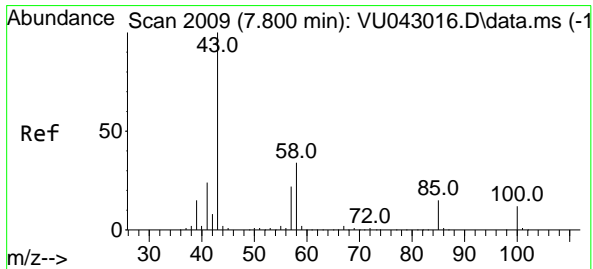
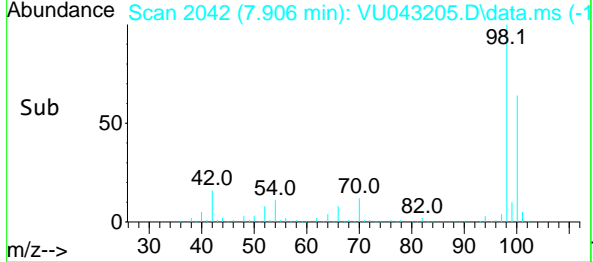
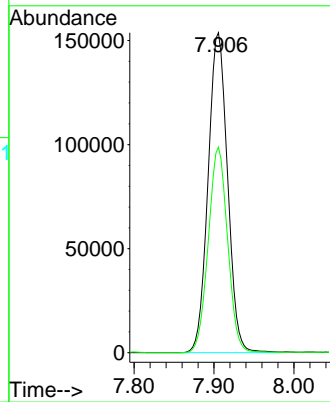


#50
 Toluene-d8
 Concen: 47.32 ug/l
 RT: 7.906 min Scan# 2042
 Delta R.T. -0.000 min
 Lab File: VU043205.D
 Acq: 19 Apr 2021 19:30

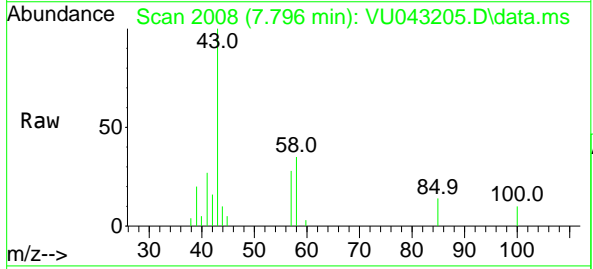
Instrument : MSVOA_U
 ClientSampled :



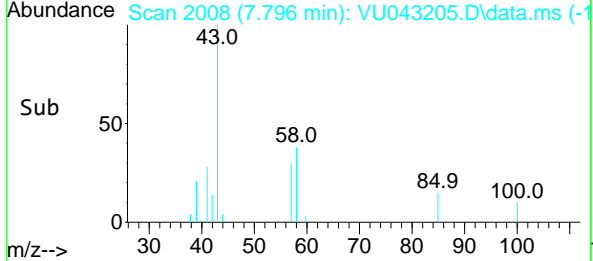
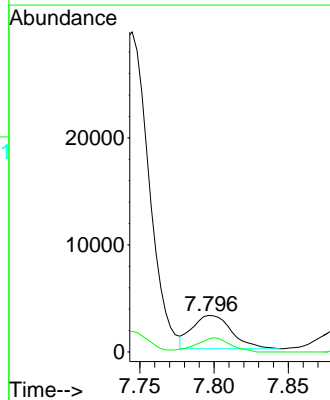
Tgt Ion: 98 Resp: 260050
 Ion Ratio Lower Upper
 98 100
 100 63.9 50.2 75.2

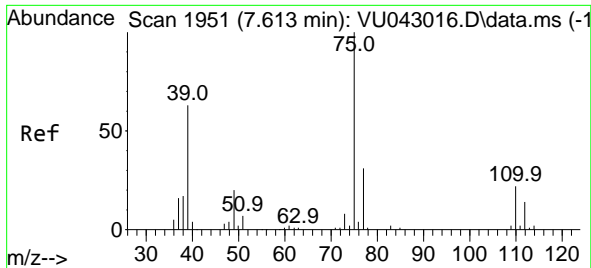


#51
 4-Methyl-2-Pentanone
 Concen: 1.46 ug/l
 RT: 7.796 min Scan# 2008
 Delta R.T. -0.004 min
 Lab File: VU043205.D
 Acq: 19 Apr 2021 19:30



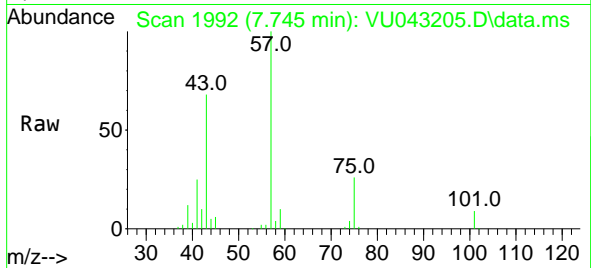
Tgt Ion: 43 Resp: 5773
 Ion Ratio Lower Upper
 43 100
 58 36.8 28.1 42.1





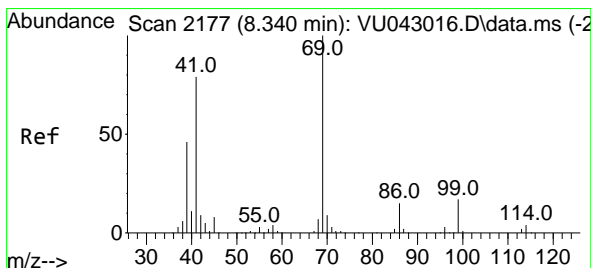
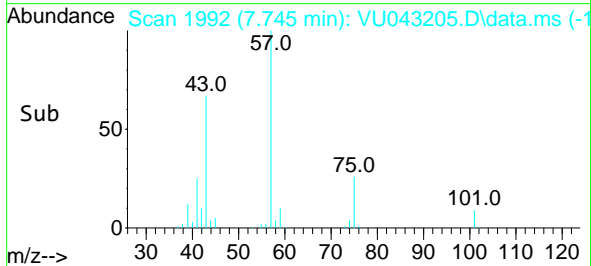
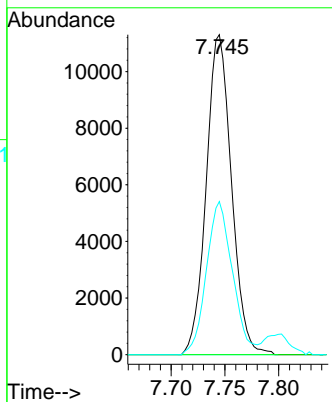
#54
 cis-1,3-Dichloropropene
 Concen: 6.73 ug/l
 RT: 7.745 min Scan# 1992
 Delta R.T. 0.132 min
 Lab File: VU043205.D
 Acq: 19 Apr 2021 19:30

Instrument :
 MSVOA_U
 ClientSampled :

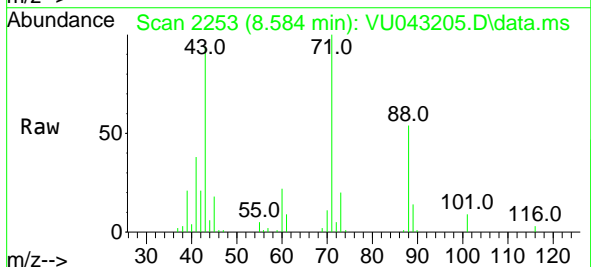


Tgt Ion: 75 Resp: 18488

Ion	Ratio	Lower	Upper
75	100		
77	0.0	24.6	37.0#
39	46.9	46.1	69.1

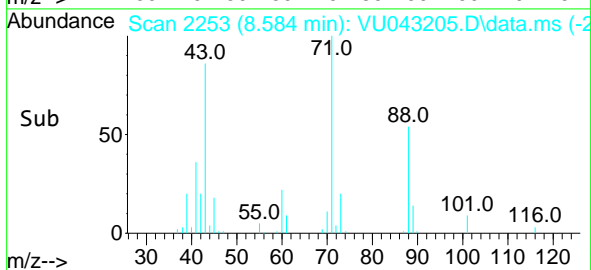
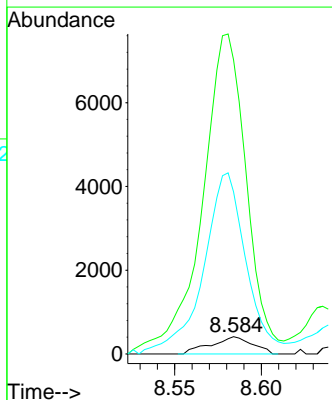


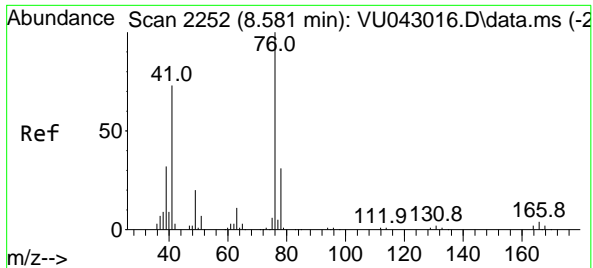
#56
 Ethyl methacrylate
 Concen: 0.25 ug/l
 RT: 8.584 min Scan# 2253
 Delta R.T. 0.244 min
 Lab File: VU043205.D
 Acq: 19 Apr 2021 19:30



Tgt Ion: 69 Resp: 688

Ion	Ratio	Lower	Upper
69	100		
41	1966.6	62.8	94.2#
39	1075.4	36.2	54.2#

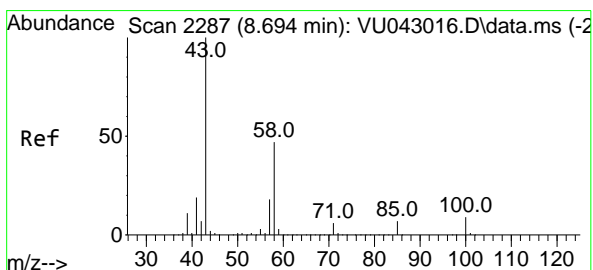
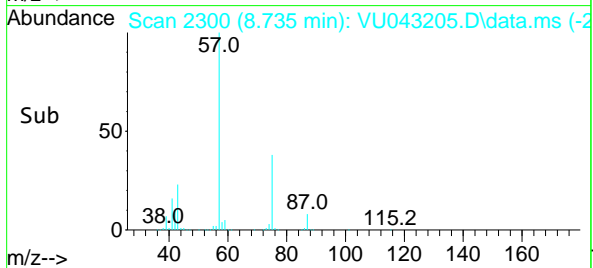
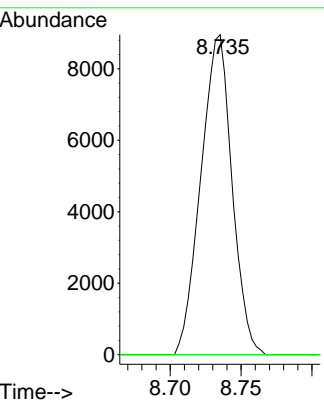
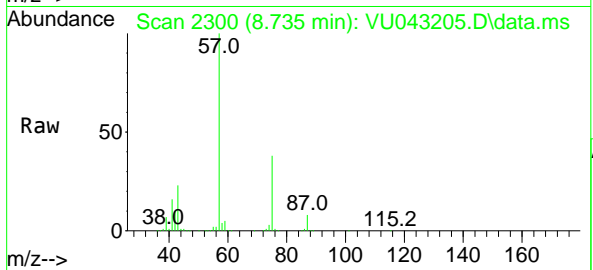




#57
 1,3-Dichloropropane
 Concen: 4.76 ug/l
 RT: 8.735 min Scan# 2300
 Delta R.T. 0.154 min
 Lab File: VU043205.D
 Acq: 19 Apr 2021 19:30

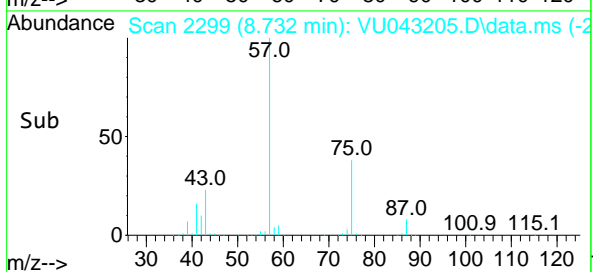
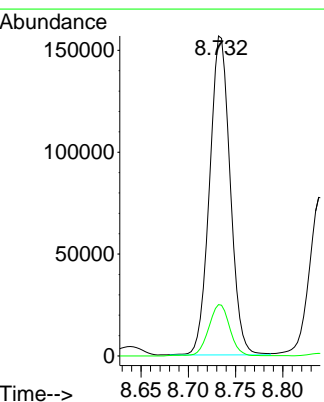
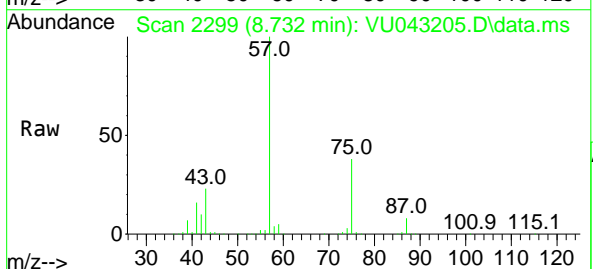
Instrument :
 MSVOA_U
 ClientSampled :

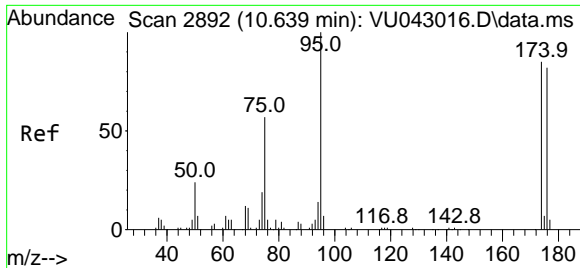
Tgt Ion: 76 Resp: 13696
 Ion Ratio Lower Upper
 76 100
 78 0.0 25.7 38.5#



#59
 2-Hexanone
 Concen: 72.84 ug/l
 RT: 8.732 min Scan# 2299
 Delta R.T. 0.038 min
 Lab File: VU043205.D
 Acq: 19 Apr 2021 19:30

Tgt Ion: 43 Resp: 237299
 Ion Ratio Lower Upper
 43 100
 58 16.7 24.0 72.0#



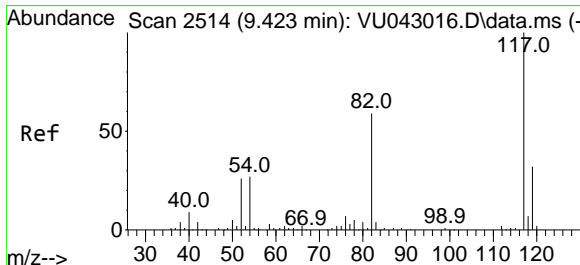
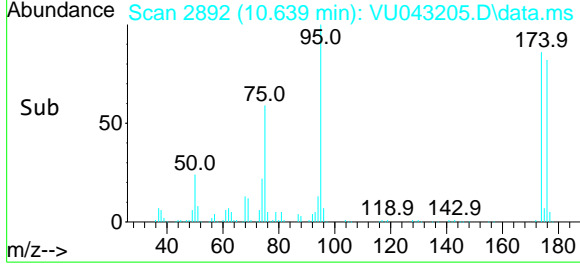
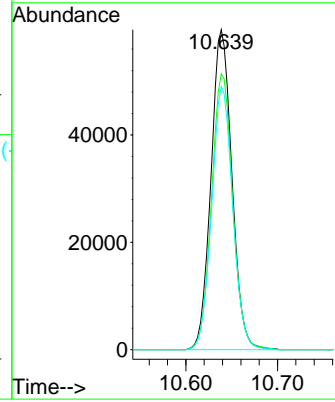
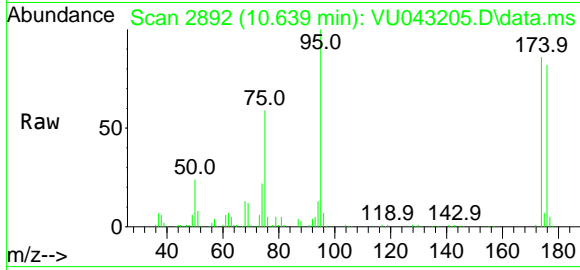


#62
 4-Bromofluorobenzene
 Concen: 42.97 ug/l
 RT: 10.639 min Scan# 2892
 Delta R.T. -0.000 min
 Lab File: VU043205.D
 Acq: 19 Apr 2021 19:30

Instrument : MSVOA_U
 ClientSampled :

Tgt Ion: 95 Resp: 94577

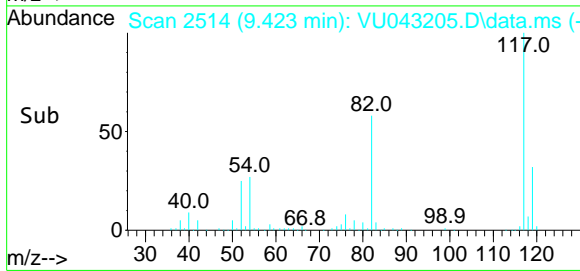
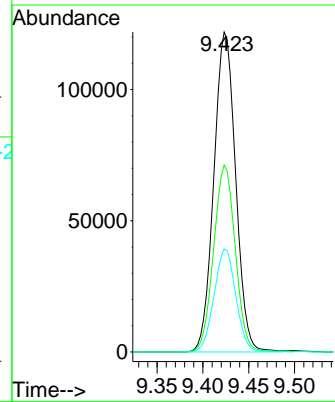
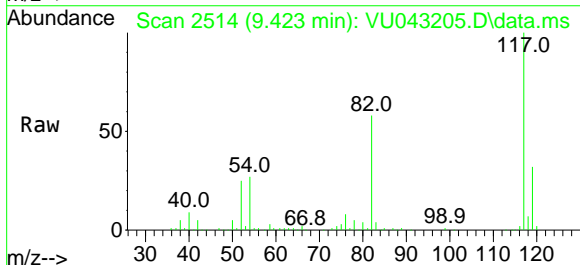
Ion	Ratio	Lower	Upper
95	100		
174	87.4	0.0	172.2
176	82.7	0.0	168.8

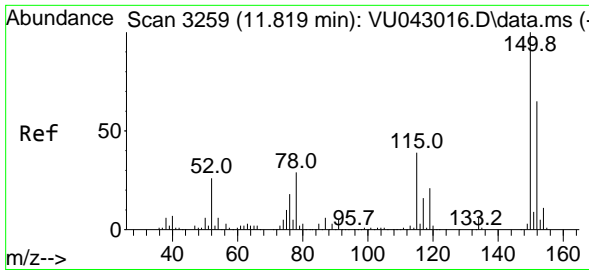


#63
 Chlorobenzene-d5
 Concen: 50.00 ug/l
 RT: 9.423 min Scan# 2514
 Delta R.T. 0.000 min
 Lab File: VU043205.D
 Acq: 19 Apr 2021 19:30

Tgt Ion: 117 Resp: 201645

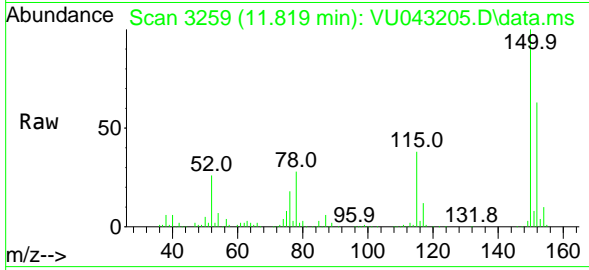
Ion	Ratio	Lower	Upper
117	100		
82	58.4	45.8	68.6
119	32.2	25.8	38.8



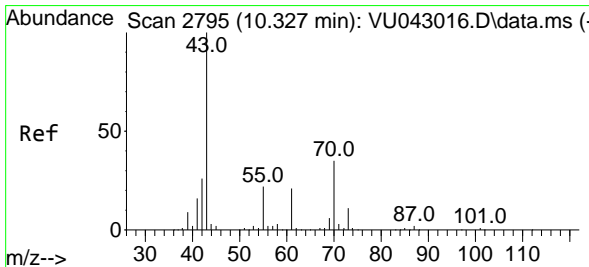
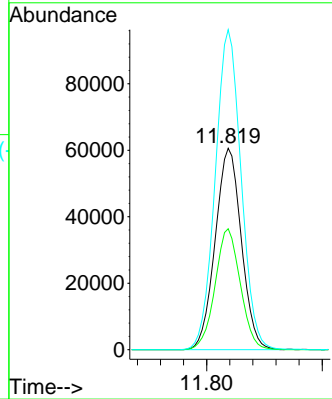
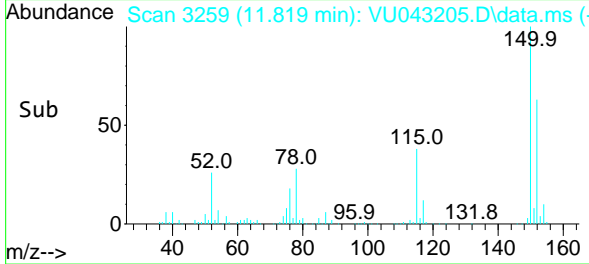


#72
 1,4-Dichlorobenzene-d4
 Concen: 50.00 ug/l
 RT: 11.819 min Scan# 3259
 Delta R.T. -0.000 min
 Lab File: VU043205.D
 Acq: 19 Apr 2021 19:30

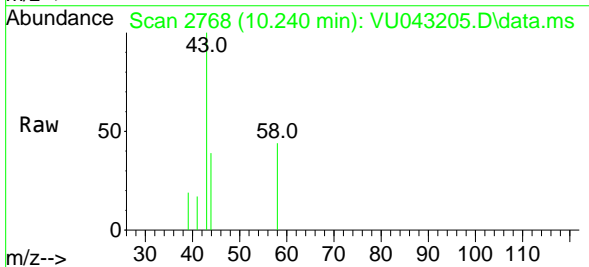
Instrument :
 MSVOA_U
 ClientSampled :



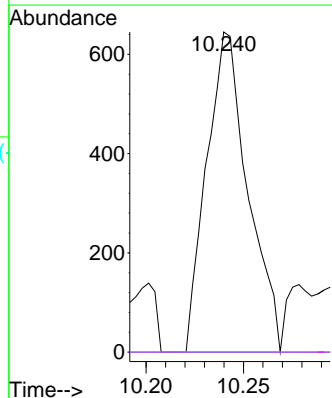
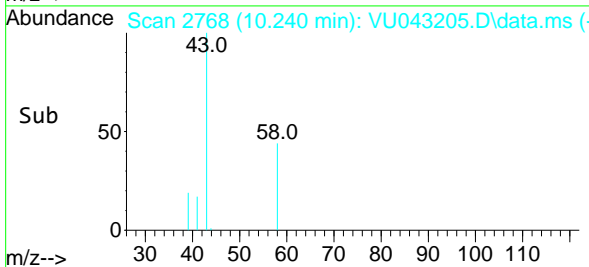
Tgt Ion:152 Resp: 95163
 Ion Ratio Lower Upper
 152 100
 115 58.0 41.5 124.6
 150 157.4 0.0 342.4

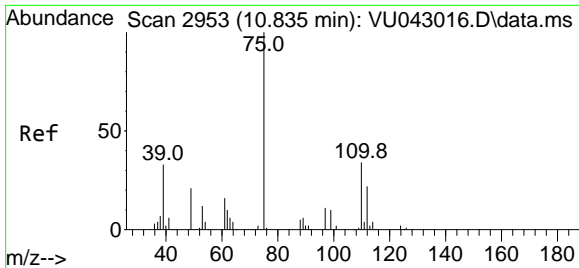


#74
 N-amy1 acetate
 Concen: 0.23 ug/l
 RT: 10.240 min Scan# 2768
 Delta R.T. -0.087 min
 Lab File: VU043205.D
 Acq: 19 Apr 2021 19:30



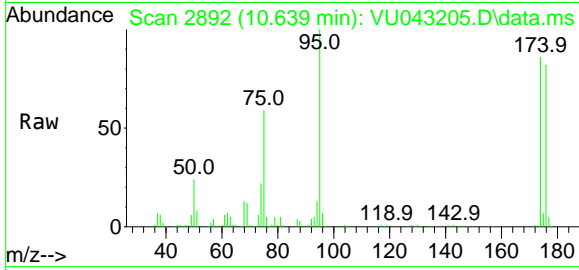
Tgt Ion: 43 Resp: 950
 Ion Ratio Lower Upper
 43 100
 70 0.0 28.3 42.5#
 55 0.0 17.2 25.8#
 61 0.0 17.3 25.9#



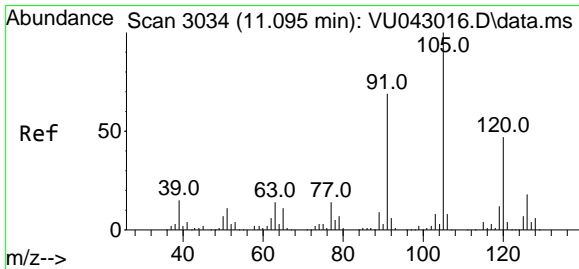
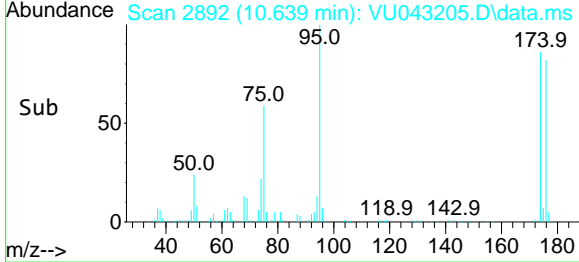
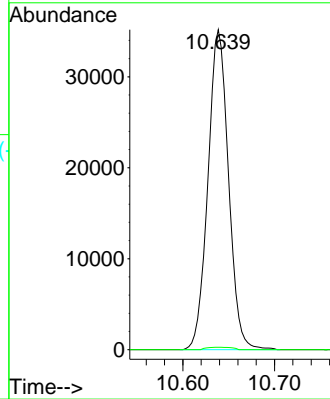


#76
 1,2,3-Trichloropropane
 Concen: 19.73 ug/l
 RT: 10.639 min Scan# 2892
 Delta R.T. -0.196 min
 Lab File: VU043205.D
 Acq: 19 Apr 2021 19:30

Instrument :
 MSVOA_U
 ClientSampled :

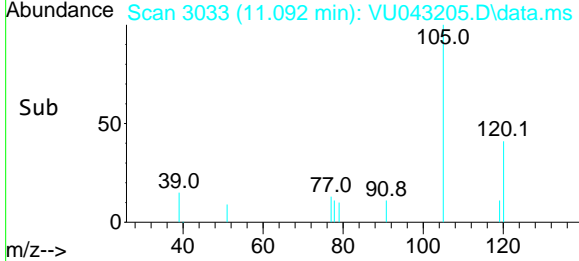
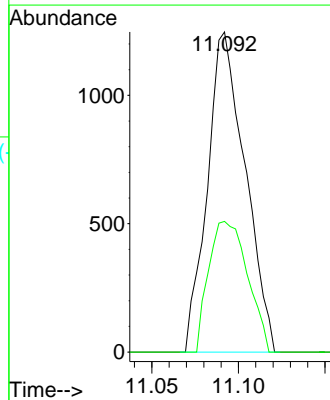
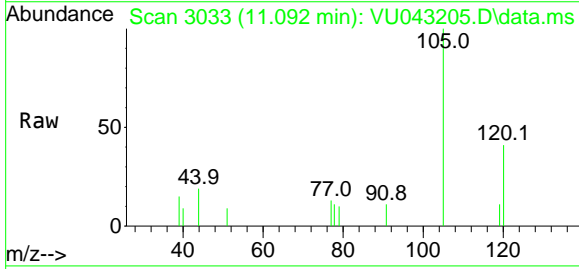


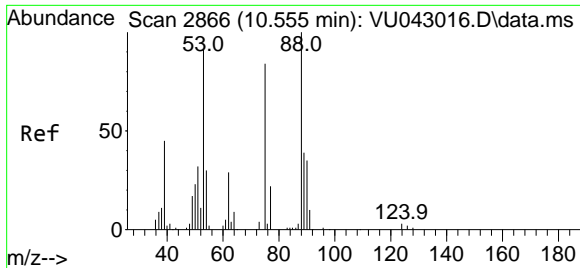
Tgt Ion: 75 Resp: 54855
 Ion Ratio Lower Upper
 75 100
 77 0.9 20.2 60.5#



#80
 1,3,5-Trimethylbenzene
 Concen: 0.34 ug/l
 RT: 11.092 min Scan# 3033
 Delta R.T. -0.003 min
 Lab File: VU043205.D
 Acq: 19 Apr 2021 19:30

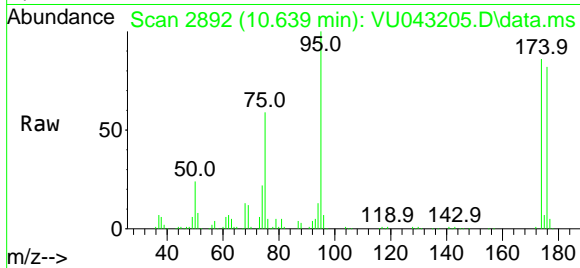
Tgt Ion: 105 Resp: 1889
 Ion Ratio Lower Upper
 105 100
 120 42.0 23.8 71.4



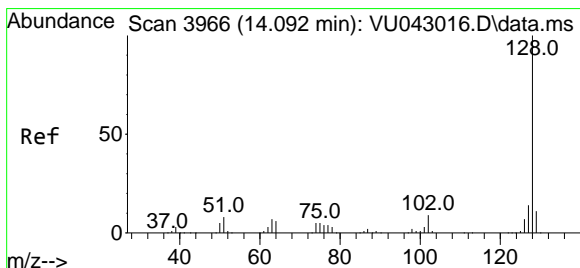
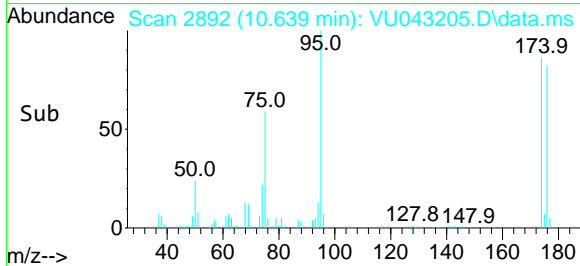
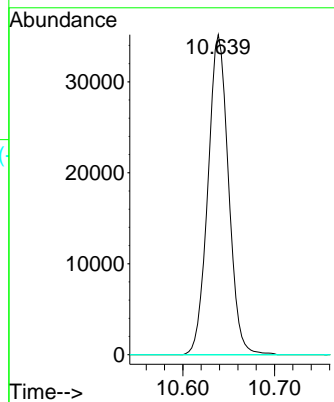


#81
 trans-1,4-Dichloro-2-butene
 Concen: 57.96 ug/l
 RT: 10.639 min Scan# 2892
 Delta R.T. 0.084 min
 Lab File: VU043205.D
 Acq: 19 Apr 2021 19:30

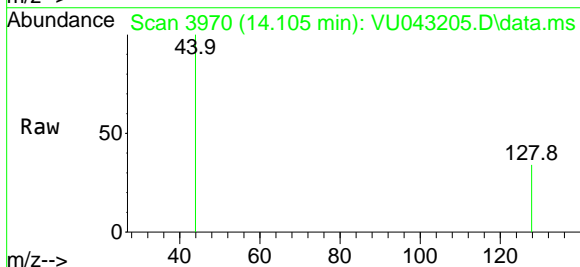
Instrument :
 MSVOA_U
 ClientSampled :



Tgt Ion: 75 Resp: 54855
 Ion Ratio Lower Upper
 75 100
 53 0.0 85.6 128.4#
 89 0.0 35.7 53.5#



#95
 Naphthalene
 Concen: 2.74 ug/l
 RT: 14.105 min Scan# 3970
 Delta R.T. 0.013 min
 Lab File: VU043205.D
 Acq: 19 Apr 2021 19:30



Tgt Ion: 128 Resp: 19
 Ion Ratio Lower Upper
 128 100
 127 0.0 10.8 16.2#
 129 0.0 8.6 13.0#

