

Data Path : Z:\voasrv\HPCHEM1\MSVOA_U\Data\VU041922\
 Data File : VU048134.D
 Acq On : 19 Apr 2022 15:56
 Operator : SY/MD
 Sample : N2469-01ME
 Misc : 4.71g/5.0mL/100uL/5.0mL/MSVOA_U/MEOH
 ALS Vial : 7 Sample Multiplier: 1

Instrument :
 MSVOA_U
 ClientSampleId :
 BFFF8ME

Integration Parameters: LSCINT.P

Integrator: RTE
 Smoothing : OFF Filtering: 5
 Sampling : 1 Min Area: 0 % of largest Peak
 Start Thrs: 0.2 Max Peaks: 100
 Stop Thrs : 0 Peak Location: TOP

If leading or trailing edge < 100 prefer < Baseline drop else tangent >
 Peak separation: 5

Method : Z:\voasrv\HPCHEM1\MSVOA_U\Method\SFAMULM032422WMA.M
 Title : VOC Analysis

Signal : TIC: VU048134.D\data.ms

peak #	R.T. min	first scan	max scan	last scan	PK TY	peak height	corr. area	corr. % max.	% of total
1	1.597	74	80	111	rVB	45190	100646	8.33%	1.071%
2	1.777	127	136	137	rBV4	8323	9635	0.80%	0.103%
3	2.542	362	374	385	rBV	114066	197094	16.31%	2.098%
4	2.803	452	455	460	rVB	341	236	0.02%	0.003%
5	2.867	471	475	481	rBV2	196	224	0.02%	0.002%
6	2.925	490	493	497	rBV	468	361	0.03%	0.004%
7	2.951	497	501	502	rBV2	340	254	0.02%	0.003%
8	3.182	555	573	596	rBV2	22409	62504	5.17%	0.665%
9	3.639	711	715	721	rVB	285	266	0.02%	0.003%
10	3.671	721	725	730	rBV3	206	241	0.02%	0.003%
11	3.742	744	747	751	rVV2	204	213	0.02%	0.002%
12	3.787	755	761	767	rVB2	201	206	0.02%	0.002%
13	3.893	789	794	799	rBV2	182	212	0.02%	0.002%
14	3.986	818	823	829	rVB	171	193	0.02%	0.002%
15	4.234	896	900	903	rBV2	256	183	0.02%	0.002%
16	4.279	909	914	917	rBV2	220	195	0.02%	0.002%
17	4.356	933	938	946	rVB2	295	394	0.03%	0.004%
18	4.639	1012	1026	1079	rBV2	110733	441468	36.52%	4.699%
19	4.912	1108	1111	1113	rBV3	349	221	0.02%	0.002%
20	5.063	1141	1158	1180	rBV	173277	403854	33.41%	4.298%
21	5.292	1222	1229	1237	rBV4	622	1103	0.09%	0.012%
22	5.340	1238	1244	1248	rBV2	652	838	0.07%	0.009%
23	5.443	1273	1276	1286	rVB4	420	499	0.04%	0.005%
24	5.497	1291	1293	1297	rVB	325	179	0.01%	0.002%
25	5.613	1327	1329	1334	rVB2	254	175	0.01%	0.002%
26	5.719	1341	1362	1393	rBV2	332759	894356	73.99%	9.519%
27	5.976	1431	1442	1459	rBV4	12172	30005	2.48%	0.319%
28	6.073	1470	1472	1475	rBV	380	181	0.01%	0.002%
29	6.111	1480	1484	1486	rVV2	256	245	0.02%	0.003%
30	6.166	1499	1501	1504	rBV2	334	183	0.02%	0.002%
31	6.250	1512	1527	1561	rVV	409794	835302	69.11%	8.890%
32	6.526	1602	1613	1625	rVV7	4486	9498	0.79%	0.101%
33	6.597	1627	1635	1651	rVV5	5370	12856	1.06%	0.137%
34	6.690	1651	1664	1691	rVB	207994	430691	35.63%	4.584%
35	6.796	1693	1697	1699	rBV2	357	249	0.02%	0.003%
36	6.931	1735	1739	1741	rVV3	286	230	0.02%	0.002%

Data Path : Z:\voasrv\HPCHEM1\MSVOA_U\Data\VU041922\
 Data File : VU048134.D
 Acq On : 19 Apr 2022 15:56
 Operator : SY/MD
 Sample : N2469-01ME
 Misc : 4.71g/5.0mL/100uL/5.0mL/MSVOA_U/MEOH
 ALS Vial : 7 Sample Multiplier: 1

Instrument :
 MSVOA_U
 ClientSampleId :
 BFFF8ME

Integration Parameters: LSCINT.P

Integrator: RTE
 Smoothing : OFF
 Sampling : 1
 Start Thrs: 0.2
 Stop Thrs : 0

Filtering: 5
 Min Area: 0 % of largest Peak
 Max Peaks: 100
 Peak Location: TOP

If leading or trailing edge < 100 prefer < Baseline drop else tangent >
 Peak separation: 5

Method : Z:\voasrv\HPCHEM1\MSVOA_U\Method\SFAMULM032422WMA.M
 Title : VOC Analysis

37	6.954	1744	1746	1750	rVB	301	202	0.02%	0.002%
38	6.973	1750	1752	1754	rBV	293	194	0.02%	0.002%
39	6.989	1755	1757	1763	rVB2	329	203	0.02%	0.002%
40	7.057	1770	1778	1779	rBV4	405	464	0.04%	0.005%
41	7.192	1806	1820	1843	rBV4	10225	36739	3.04%	0.391%
42	7.494	1911	1914	1918	rBV3	376	332	0.03%	0.004%
43	7.568	1924	1937	1960	rBV	97572	195847	16.20%	2.084%
44	7.697	1968	1977	1987	rBV3	2160	4747	0.39%	0.051%
45	7.793	1997	2007	2017	rBV3	3683	7768	0.64%	0.083%
46	7.899	2027	2040	2057	rBV	303820	555032	45.92%	5.907%
47	8.185	2117	2129	2150	rBV2	65349	138754	11.48%	1.477%
48	8.388	2190	2192	2194	rVB2	494	185	0.02%	0.002%
49	8.475	2206	2219	2227	rBV2	1507	3199	0.26%	0.034%
50	8.664	2260	2278	2309	rBV	456773	963852	79.74%	10.259%
51	8.886	2345	2347	2351	rVB2	434	324	0.03%	0.003%
52	8.925	2352	2359	2362	rBV5	906	1144	0.09%	0.012%
53	9.024	2387	2390	2393	rBV2	288	208	0.02%	0.002%
54	9.047	2393	2397	2399	rVV2	319	227	0.02%	0.002%
55	9.060	2399	2401	2406	rVB3	303	204	0.02%	0.002%
56	9.089	2406	2410	2413	rBV	233	183	0.02%	0.002%
57	9.182	2436	2439	2443	rBV	255	234	0.02%	0.002%
58	9.227	2448	2453	2456	rBV3	375	425	0.04%	0.005%
59	9.327	2481	2484	2487	rVB2	239	178	0.01%	0.002%
60	9.423	2499	2514	2552	rVV	548599	1110595	91.88%	11.821%
61	9.578	2560	2562	2571	rVB4	583	542	0.04%	0.006%
62	9.703	2597	2601	2604	rBV3	441	354	0.03%	0.004%
63	9.777	2621	2624	2630	rVB	310	284	0.02%	0.003%
64	9.905	2660	2664	2669	rBV2	199	220	0.02%	0.002%
65	9.941	2672	2675	2679	rVB	267	188	0.02%	0.002%
66	9.973	2682	2685	2689	rBV3	251	210	0.02%	0.002%
67	10.558	2863	2867	2874	rVB2	480	521	0.04%	0.006%
68	10.606	2874	2882	2884	rBV4	872	970	0.08%	0.010%
69	10.626	2886	2888	2892	rVV2	1093	875	0.07%	0.009%
70	10.648	2892	2895	2905	rVB5	906	1395	0.12%	0.015%
71	10.767	2916	2932	2951	rBV	529222	858564	71.03%	9.138%
72	10.883	2965	2968	2970	rBV2	828	558	0.05%	0.006%
73	11.008	3004	3007	3011	rVB	316	181	0.01%	0.002%
74	11.037	3012	3016	3018	rBV	195	185	0.02%	0.002%
75	11.069	3023	3026	3029	rVB2	543	325	0.03%	0.003%
76	11.114	3033	3040	3050	rVB4	3496	4805	0.40%	0.051%

Data Path : Z:\voasrv\HPCHEM1\MSVOA_U\Data\VU041922\
 Data File : VU048134.D
 Acq On : 19 Apr 2022 15:56
 Operator : SY/MD
 Sample : N2469-01ME
 Misc : 4.71g/5.0mL/100uL/5.0mL/MSVOA_U/MEOH
 ALS Vial : 7 Sample Multiplier: 1

Instrument :
 MSVOA_U
 ClientSampleId :
 BFFF8ME

Integration Parameters: LSCINT.P

Integrator: RTE
 Smoothing : OFF Filtering: 5
 Sampling : 1 Min Area: 0 % of largest Peak
 Start Thrs: 0.2 Max Peaks: 100
 Stop Thrs : 0 Peak Location: TOP

If leading or trailing edge < 100 prefer < Baseline drop else tangent >
 Peak separation: 5

Method : Z:\voasrv\HPCHEM1\MSVOA_U\Method\SFAMULM032422WMA.M
 Title : VOC Analysis

77	11.240	3075	3079	3084	rBV2	232	217	0.02%	0.002%
78	11.317	3098	3103	3107	rVB4	925	799	0.07%	0.009%
79	11.375	3117	3121	3127	rVB4	701	773	0.06%	0.008%
80	11.417	3129	3134	3141	rVB4	812	949	0.08%	0.010%
81	11.455	3142	3146	3148	rBV2	518	388	0.03%	0.004%
82	11.471	3148	3151	3154	rBV2	534	366	0.03%	0.004%
83	11.754	3235	3239	3244	rBV2	460	464	0.04%	0.005%
84	11.819	3244	3259	3281	rBV	760963	1208686	100.00%	12.865%
85	12.076	3334	3339	3344	rVB4	435	515	0.04%	0.005%
86	12.137	3355	3358	3365	rVB3	382	352	0.03%	0.004%
87	12.201	3365	3378	3394	rBV	514921	845386	69.94%	8.998%
88	12.388	3431	3436	3437	rBV3	262	244	0.02%	0.003%
89	12.468	3455	3461	3467	rVB2	523	597	0.05%	0.006%
90	12.722	3538	3540	3544	rBV	353	207	0.02%	0.002%
91	12.774	3549	3556	3561	rBV2	848	1182	0.10%	0.013%
92	13.118	3660	3663	3664	rBV	384	192	0.02%	0.002%
93	13.163	3673	3677	3680	rBV2	395	407	0.03%	0.004%
94	13.237	3695	3700	3708	rBV3	957	1248	0.10%	0.013%
95	13.433	3755	3761	3764	rBV3	432	552	0.05%	0.006%
96	14.101	3958	3969	3974	rBV4	1820	3017	0.25%	0.032%
97	14.333	4038	4041	4050	rBV3	990	1094	0.09%	0.012%
98	14.770	4175	4177	4179	rBV2	534	256	0.02%	0.003%
99	15.259	4325	4329	4332	rBV3	628	583	0.05%	0.006%
100	15.571	4424	4426	4429	rBV2	648	393	0.03%	0.004%

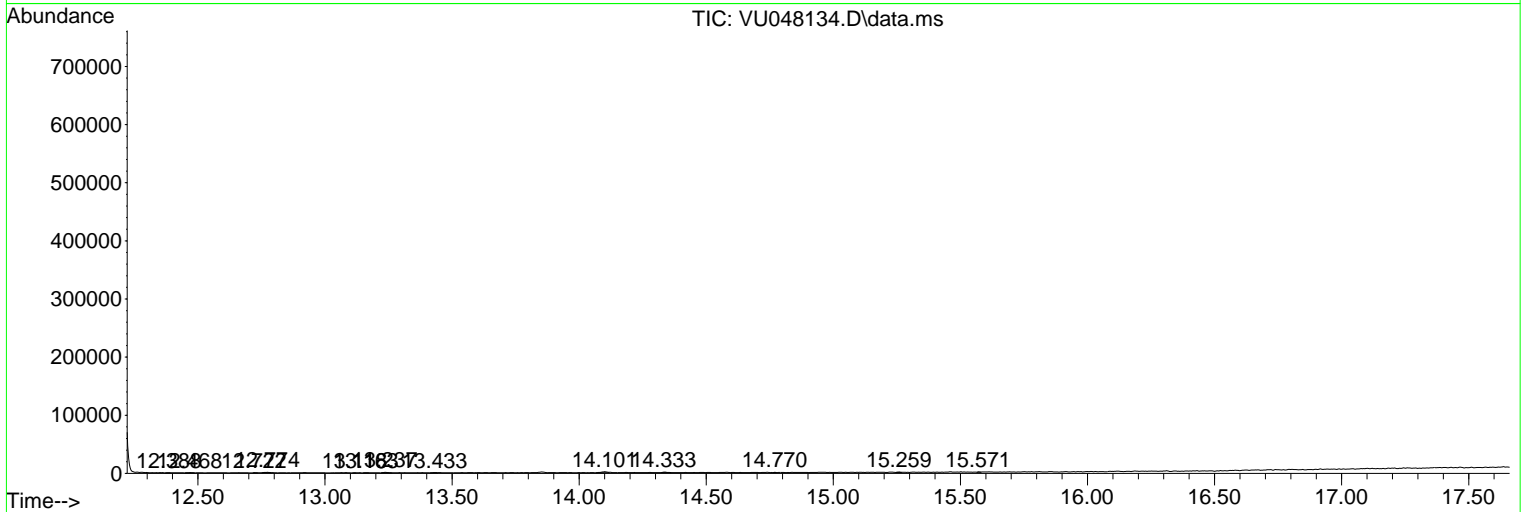
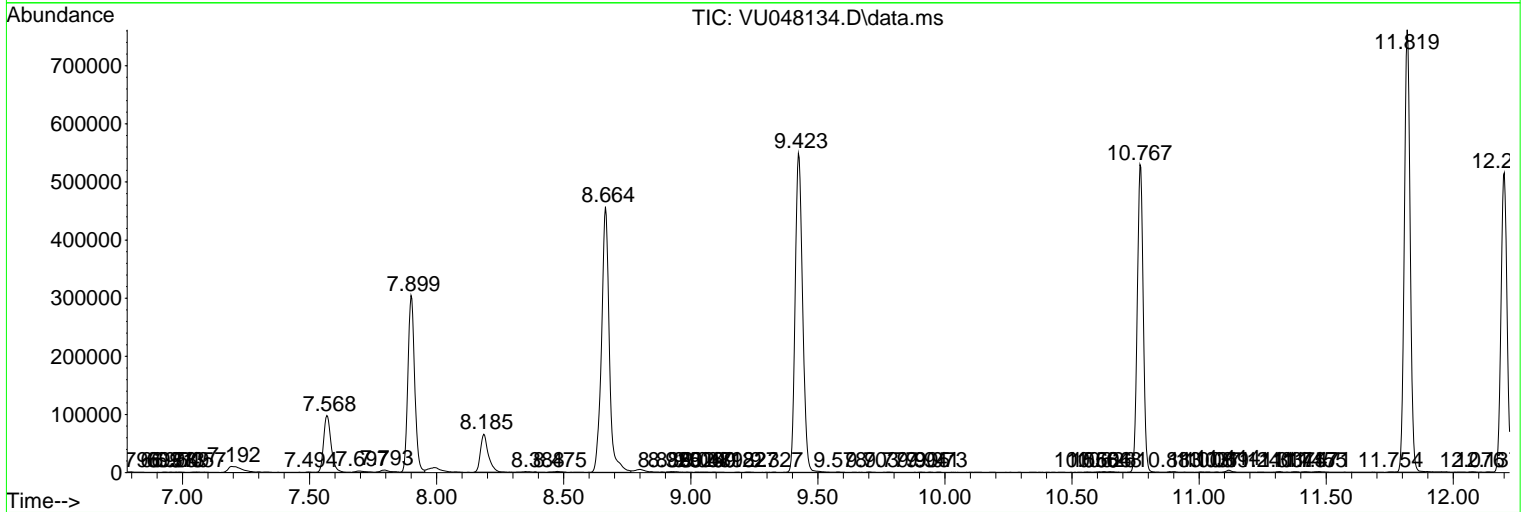
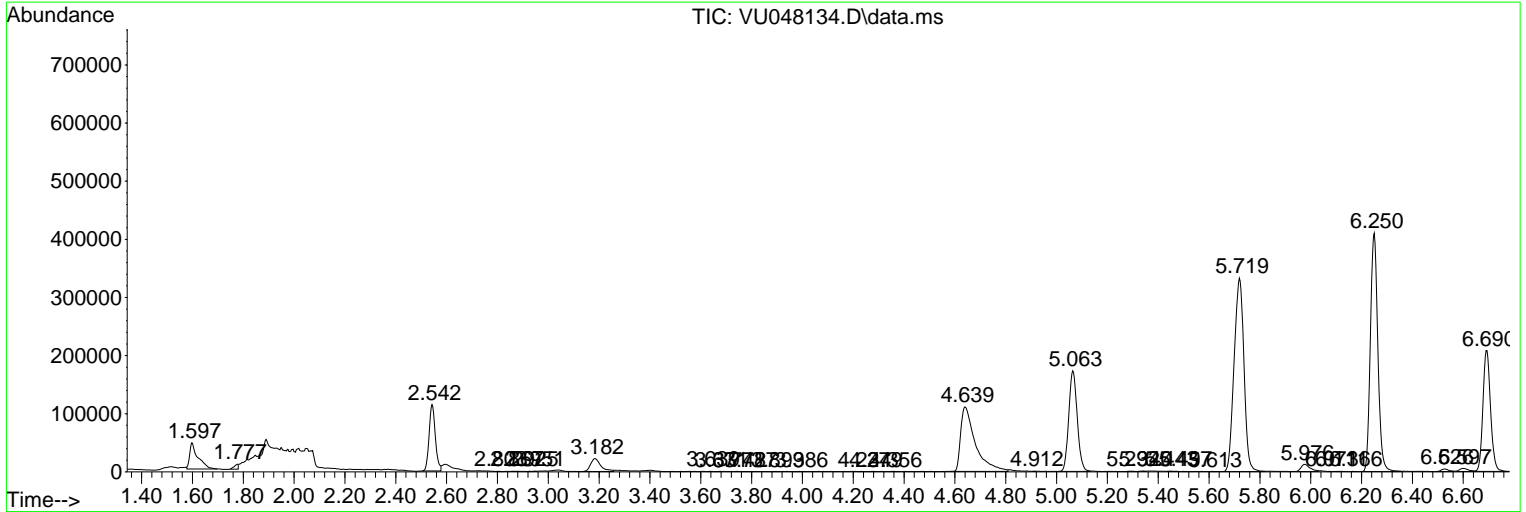
Sum of corrected areas: 9395474

Data Path : Z:\voasrv\HPCHEM1\MSVOA_U\Data\VU041922\
 Data File : VU048134.D
 Acq On : 19 Apr 2022 15:56
 Operator : SY/MD
 Sample : N2469-01ME
 Misc : 4.71g/5.0mL/100uL/5.0mL/MSVOA_U/MEOH
 ALS Vial : 7 Sample Multiplier: 1

Instrument :
 MSVOA_U
 ClientSampleId :
 BFFF8ME

Quant Method : Z:\voasrv\HPCHEM1\MSVOA_U\Method\SFAMULM032422WMA.M
 Quant Title : VOC Analysis

TIC Library : C:\Database\NIST20.L
 TIC Integration Parameters: LSCINT.P



Data Path : Z:\voasrv\HPCHEM1\MSVOA_U\Data\VU041922\
Data File : VU048134.D
Acq On : 19 Apr 2022 15:56
Operator : SY/MD
Sample : N2469-01ME
Misc : 4.71g/5.0mL/100uL/5.0mL/MSVOA_U/MEOH
ALS Vial : 7 Sample Multiplier: 1

Instrument :
MSVOA_U
ClientSampleId :
BFFF8ME

Quant Method : Z:\voasrv\HPCHEM1\MSVOA_U\Method\SFAMULM032422WMA.M
Quant Title : VOC Analysis

TIC Library : C:\Database\NIST20.L
TIC Integration Parameters: LSCINT.P

No Library Search Compounds Detected

Data Path : Z:\voasrv\HPCHEM1\MSVOA_U\Data\VU041922\
Data File : VU048134.D
Acq On : 19 Apr 2022 15:56
Operator : SY/MD
Sample : N2469-01ME
Misc : 4.71g/5.0mL/100uL/5.0mL/MSVOA_U/MEOH
ALS Vial : 7 Sample Multiplier: 1

Instrument :
MSVOA_U
ClientSampleId :
BFFF8ME

Quant Method : Z:\voasrv\HPCHEM1\MSVOA_U\Method\SFAMULM032422WMA.M
Quant Title : VOC Analysis

TIC Library : C:\Database\NIST0.L
TIC Integration Parameters: LSCINT.P

TIC Top Hit name	RT	EstConc	Units	Response	--Internal Standard--			
					#	RT	Resp	Conc
