

Data Path : Z:\voasrv\HPCHEM1\MSVOA_U\Data\VU042122\
 Data File : VU048186.D
 Acq On : 21 Apr 2022 20:26
 Operator : SY/MD
 Sample : VSTDCCC050
 Misc : 5.0mL/MSVOA_U/WATER
 ALS Vial : 26 Sample Multiplier: 1

Instrument :
 MSVOA_U
 ClientSampleId :
 VSTD050093

Quant Time: Apr 22 01:54:17 2022
 Quant Method : Z:\voasrv\HPCHEM1\MSVOA_U\Method\SFAMULM032422WMA.M
 Quant Title : VOC Analysis
 QLast Update : Fri Apr 22 01:48:00 2022
 Response via : Initial Calibration

Compound	R.T.	QIon	Response	Conc	Units	Dev(Min)
Internal Standards						
1) 1,4-Difluorobenzene	6.250	114	338213	50.000	ug/L	0.00
28) Chlorobenzene-d5	9.417	117	351053	50.000	ug/L	0.00
58) 1,4-Dichlorobenzene-d4	11.812	152	202682	50.000	ug/L	0.00
System Monitoring Compounds						
4) Vinyl Chloride-d3	1.600	65	107413	43.796	ug/L	0.00
Spiked Amount	50.000	Range 60 - 135	Recovery =	87.600%		
7) Chloroethane-d5	1.912	69	91788	47.463	ug/L	0.00
Spiked Amount	50.000	Range 70 - 130	Recovery =	94.920%		
11) 1,1-Dichloroethene-d2	2.571	63	200046	44.581	ug/L	0.00
Spiked Amount	50.000	Range 60 - 125	Recovery =	89.160%		
21) 2-Butanone-d5	4.620	46	211436	100.439	ug/L	0.00
Spiked Amount	100.000	Range 40 - 130	Recovery =	100.440%		
24) Chloroform-d	5.066	84	224604	50.050	ug/L	0.00
Spiked Amount	50.000	Range 70 - 125	Recovery =	100.100%		
26) 1,2-Dichloroethane-d4	5.703	65	132601	48.178	ug/L	0.00
Spiked Amount	50.000	Range 70 - 125	Recovery =	96.360%		
32) Benzene-d6	5.729	84	440505	49.868	ug/L	0.00
Spiked Amount	50.000	Range 70 - 125	Recovery =	99.740%		
36) 1,2-Dichloropropane-d6	6.690	67	145979	53.810	ug/L	0.00
Spiked Amount	50.000	Range 70 - 120	Recovery =	107.620%		
41) Toluene-d8	7.899	98	409152	47.540	ug/L	0.00
Spiked Amount	50.000	Range 80 - 120	Recovery =	95.080%		
43) trans-1,3-Dichloroprop...	8.179	79	62133	45.208	ug/L	0.00
Spiked Amount	50.000	Range 60 - 125	Recovery =	90.420%		
47) 2-Hexanone-d5	8.632	63	149876	94.374	ug/L	0.00
Spiked Amount	100.000	Range 45 - 130	Recovery =	94.370%		
56) 1,1,2,2-Tetrachloroeth...	10.758	84	235935	50.677	ug/L	0.00
Spiked Amount	50.000	Range 65 - 120	Recovery =	101.360%		
66) 1,2-Dichlorobenzene-d4	12.195	152	176644	48.987	ug/L	0.00
Spiked Amount	50.000	Range 80 - 120	Recovery =	97.980%		
Target Compounds						
2) Dichlorodifluoromethane	1.385	85	127599	40.694	ug/L	100
3) Chloromethane	1.523	50	133165	44.408	ug/L	100
5) Vinyl chloride	1.607	62	149091	48.750	ug/L	99
6) Bromomethane	1.854	94	75694	45.985	ug/L	99
8) Chloroethane	1.935	64	94198	49.065	ug/L	97
9) Trichlorofluoromethane	2.141	101	196736	45.619	ug/L	100
10) 1,1,2-Trichloro-1,2,2-...	2.584	101	124265	49.849	ug/L	99
12) 1,1-Dichloroethene	2.581	96	112931	48.677	ug/L	87
13) Acetone	2.623	43	150275	76.710	ug/L	98
14) Carbon disulfide	2.796	76	283835	38.705	ug/L	100
15) Methyl Acetate	2.948	43	166479	53.293	ug/L	96
16) Methylene chloride	3.047	84	147119	55.261	ug/L	98
17) trans-1,2-Dichloroethene	3.356	96	121332	48.487	ug/L	96
18) Methyl tert-butyl Ether	3.362	73	383610	54.338	ug/L	98
19) 1,1-Dichloroethane	3.870	63	242920	56.288	ug/L	99
20) cis-1,2-Dichloroethene	4.668	96	145751	53.129	ug/L	97
22) 2-Butanone	4.700	43	242073	95.926	ug/L	96
23) Bromochloromethane	4.976	128	80506	53.449	ug/L	95
25) Chloroform	5.089	83	252898	54.429	ug/L	100

Data Path : Z:\voasrv\HPCHEM1\MSVOA_U\Data\VU042122\
 Data File : VU048186.D
 Acq On : 21 Apr 2022 20:26
 Operator : SY/MD
 Sample : VSTDCCC050
 Misc : 5.0mL/MSVOA_U/WATER
 ALS Vial : 26 Sample Multiplier: 1

Instrument :
 MSVOA_U
 ClientSampleId :
 VSTD050093

Quant Time: Apr 22 01:54:17 2022
 Quant Method : Z:\voasrv\HPCHEM1\MSVOA_U\Method\SFAMULM032422WMA.M
 Quant Title : VOC Analysis
 QLast Update : Fri Apr 22 01:48:00 2022
 Response via : Initial Calibration

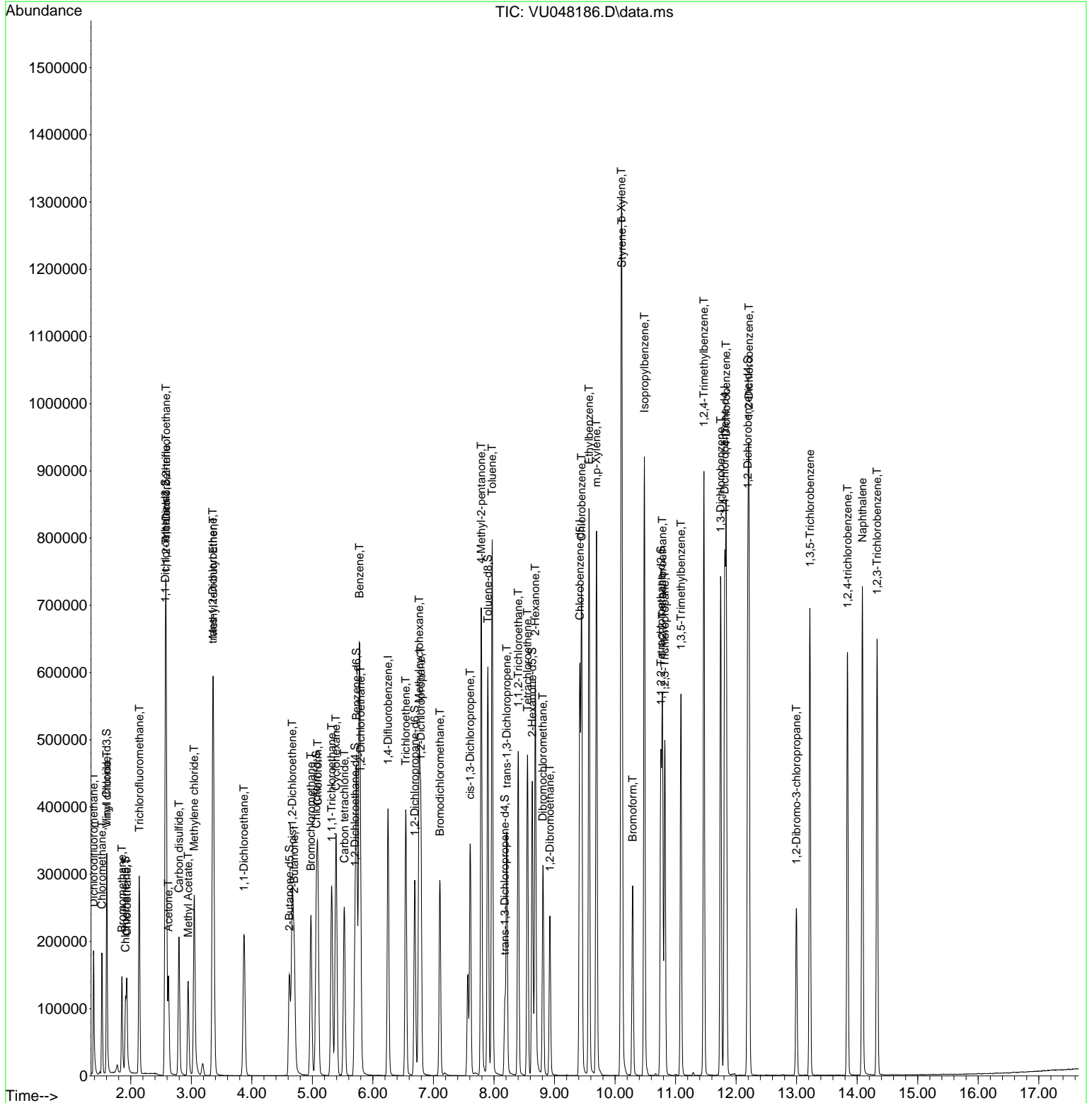
Compound	R.T.	QIon	Response	Conc	Units	Dev(Min)
27) 1,2-Dichloroethane	5.796	62	185270	51.611	ug/L	97
29) Cyclohexane	5.391	56	171654	48.187	ug/L	95
30) 1,1,1-Trichloroethane	5.317	97	205045	51.511	ug/L	100
31) Carbon tetrachloride	5.526	117	176706	49.161	ug/L	99
33) Benzene	5.777	78	553549	54.476	ug/L	100
34) Trichloroethene	6.542	95	136372	51.191	ug/L	99
35) Methylcyclohexane	6.764	83	186226	45.950	ug/L	97
37) 1,2-Dichloropropane	6.793	63	153382	59.378	ug/L	99
38) Bromodichloromethane	7.105	83	190306	53.649	ug/L	99
39) cis-1,3-Dichloropropene	7.607	75	208140	51.930	ug/L	100
40) 4-Methyl-2-pentanone	7.790	43	437898	107.258	ug/L	98
42) Toluene	7.970	91	591696	53.070	ug/L	99
44) trans-1,3-Dichloropropene	8.211	75	204205	51.027	ug/L	99
45) 1,1,2-Trichloroethane	8.401	97	153208	55.923	ug/L	99
46) Tetrachloroethene	8.552	164	114595	47.868	ug/L	98
48) 2-Hexanone	8.684	43	357452	101.785	ug/L	98
49) Dibromochloromethane	8.809	129	164743	51.919	ug/L	98
50) 1,2-Dibromoethane	8.925	107	160419	52.231	ug/L	97
51) Chlorobenzene	9.446	112	403520	53.303	ug/L	98
52) Ethylbenzene	9.571	91	601258	51.288	ug/L	100
53) m,p-Xylene	9.693	106	243294	52.891	ug/L	100
54) o-Xylene	10.102	106	236852	52.462	ug/L	99
55) Styrene	10.115	104	416214	53.998	ug/L	99
57) 1,1,2,2-Tetrachloroethane	10.783	83	276482	53.832	ug/L	99
59) Bromoform	10.291	173	133976	51.693	ug/L	100
60) 1,2,3-Trichloropropane	10.822	75	213296	55.824	ug/L	98
61) Isopropylbenzene	10.484	105	600389	54.810	ug/L	99
62) 1,3,5-Trimethylbenzene	11.089	105	306255	51.529	ug/L	99
63) 1,2,4-Trimethylbenzene	11.468	105	482051	53.396	ug/L	99
64) 1,3-Dichlorobenzene	11.745	146	321668	52.833	ug/L	99
65) 1,4-Dichlorobenzene	11.835	146	338697	53.707	ug/L	100
67) 1,2-Dichlorobenzene	12.211	146	329290	54.052	ug/L	99
68) 1,2-Dibromo-3-chloropr...	12.995	75	60490	49.423	ug/L	97
69) 1,3,5-Trichlorobenzene	13.221	180	237918	48.116	ug/L	99
70) 1,2,4-trichlorobenzene	13.841	180	211595	48.855	ug/L	100
71) Naphthalene	14.085	128	599983	46.465	ug/L	99
72) 1,2,3-Trichlorobenzene	14.330	180	217712	50.143	ug/L	100

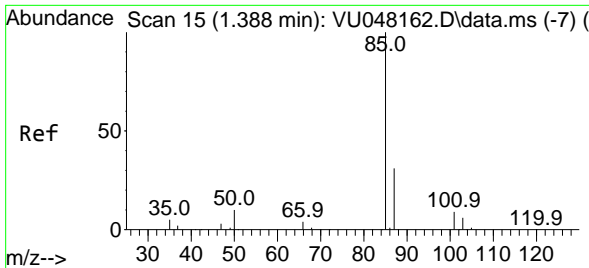
(#) = qualifier out of range (m) = manual integration (+) = signals summed

Data Path : Z:\voasrv\HPCHEM1\MSVOA_U\Data\VU042122\
 Data File : VU048186.D
 Acq On : 21 Apr 2022 20:26
 Operator : SY/MD
 Sample : VSTDCCC050
 Misc : 5.0mL/MSVOA_U/WATER
 ALS Vial : 26 Sample Multiplier: 1

Instrument :
 MSVOA_U
 ClientSampleId :
 VSTD050093

Quant Time: Apr 22 01:54:17 2022
 Quant Method : Z:\voasrv\HPCHEM1\MSVOA_U\Method\SFAMULM032422WMA.M
 Quant Title : VOC Analysis
 QLast Update : Fri Apr 22 01:48:00 2022
 Response via : Initial Calibration

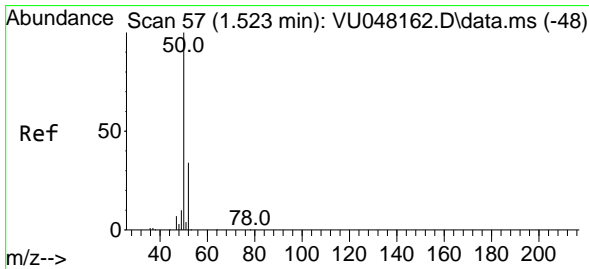
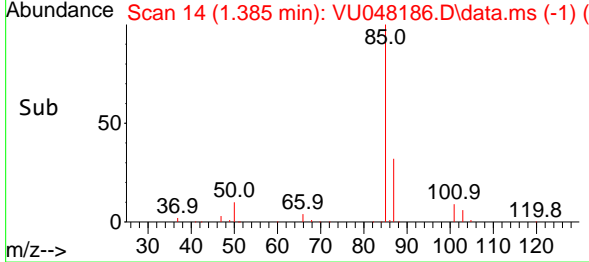
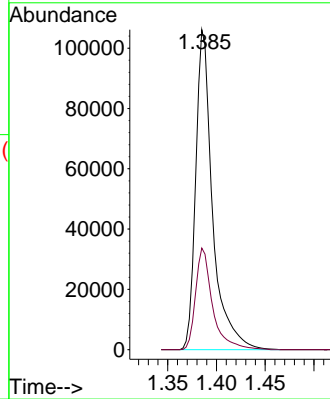
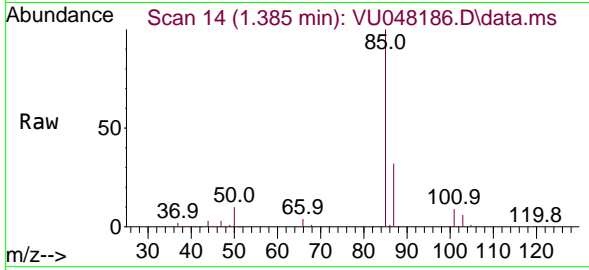




#2
 Dichlorodifluoromethane
 Concen: 40.694 ug/L
 RT: 1.385 min Scan# 14
 Delta R.T. -0.003 min
 Lab File: VU048186.D
 Acq: 21 Apr 2022 20:26

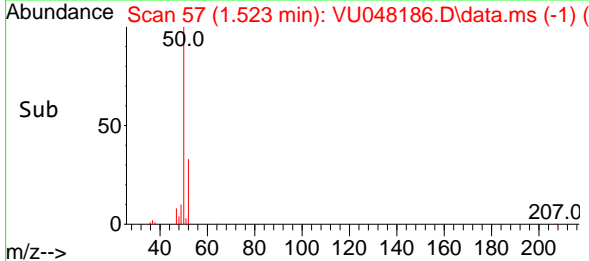
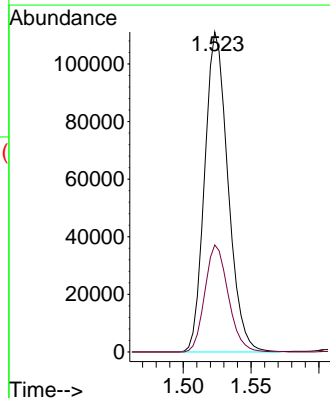
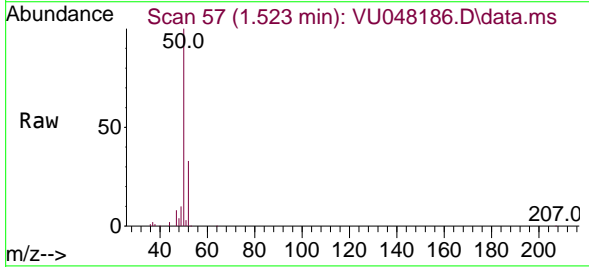
Instrument : MSVOA_U
 ClientSampleId : VSTD050093

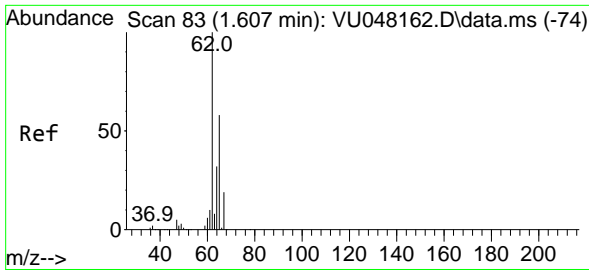
Tgt Ion: 85 Resp: 127599
 Ion Ratio Lower Upper
 85 100
 87 32.1 25.8 38.8



#3
 Chloromethane
 Concen: 44.408 ug/L
 RT: 1.523 min Scan# 57
 Delta R.T. -0.000 min
 Lab File: VU048186.D
 Acq: 21 Apr 2022 20:26

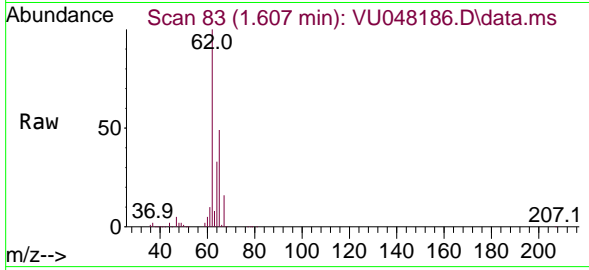
Tgt Ion: 50 Resp: 133165
 Ion Ratio Lower Upper
 50 100
 52 33.5 23.2 43.2



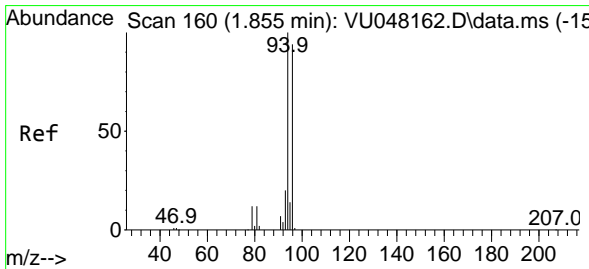
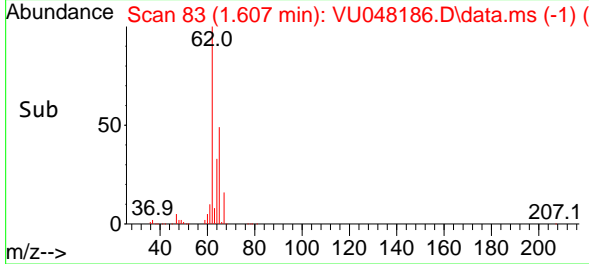
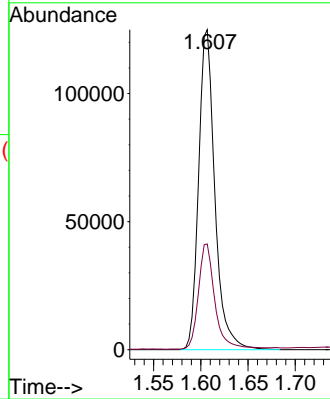


#5
 Vinyl chloride
 Concen: 48.750 ug/L
 RT: 1.607 min Scan# 81
 Delta R.T. -0.000 min
 Lab File: VU048186.D
 Acq: 21 Apr 2022 20:26

Instrument :
 MSVOA_U
 ClientSampleId :
 VSTD050093

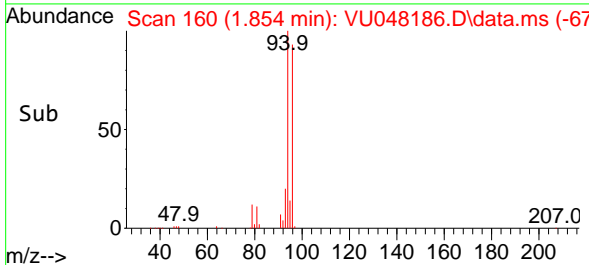
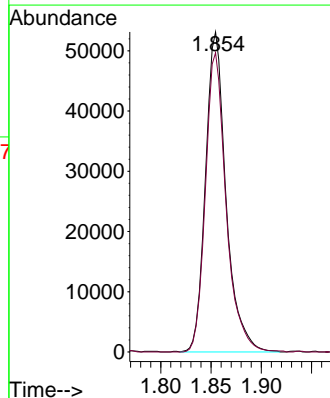
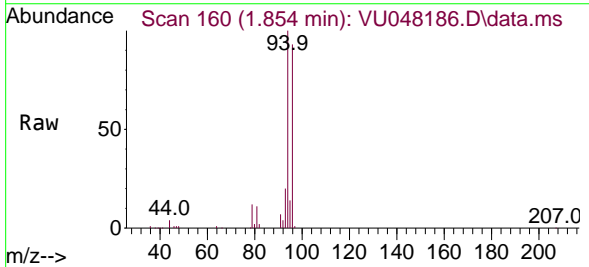


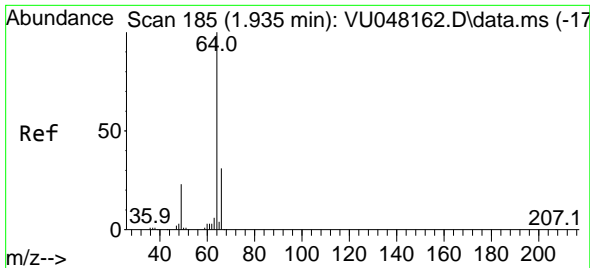
Tgt Ion: 62 Resp: 149091
 Ion Ratio Lower Upper
 62 100
 64 33.0 23.7 43.9



#6
 Bromomethane
 Concen: 45.985 ug/L
 RT: 1.854 min Scan# 160
 Delta R.T. -0.000 min
 Lab File: VU048186.D
 Acq: 21 Apr 2022 20:26

Tgt Ion: 94 Resp: 75694
 Ion Ratio Lower Upper
 94 100
 96 93.5 64.8 120.3

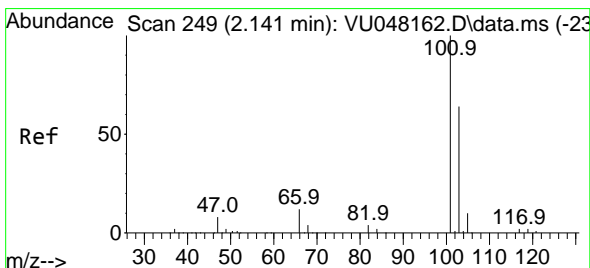
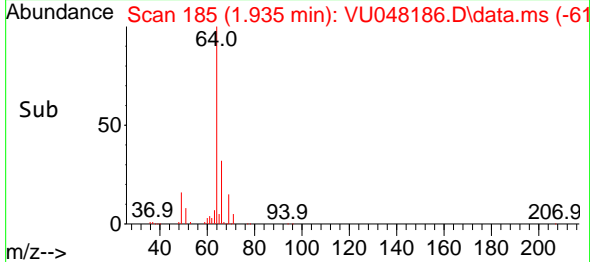
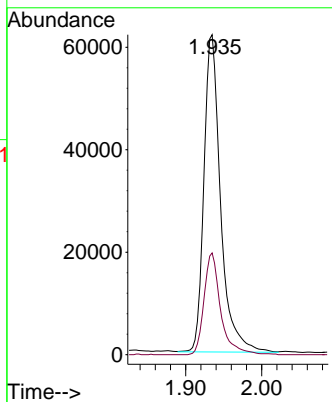
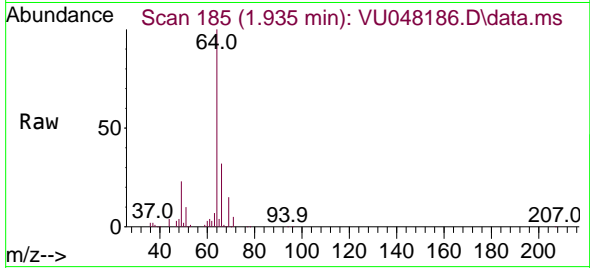




#8
 Chloroethane
 Concen: 49.065 ug/L
 RT: 1.935 min Scan# 185
 Delta R.T. -0.000 min
 Lab File: VU048186.D
 Acq: 21 Apr 2022 20:26

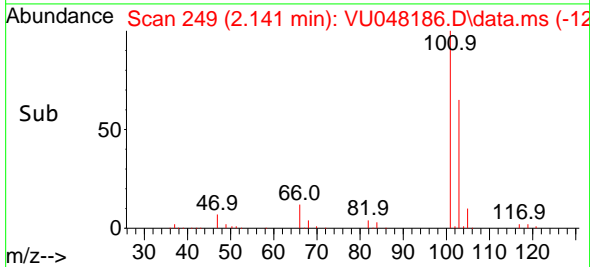
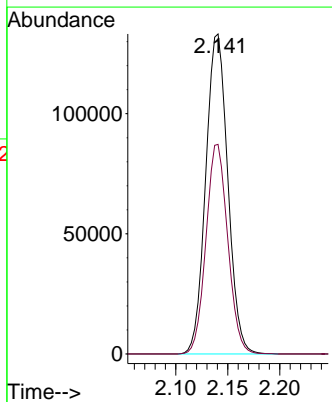
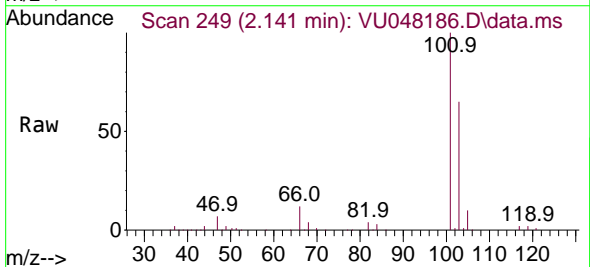
Instrument : MSVOA_U
 ClientSampleId : VSTD050093

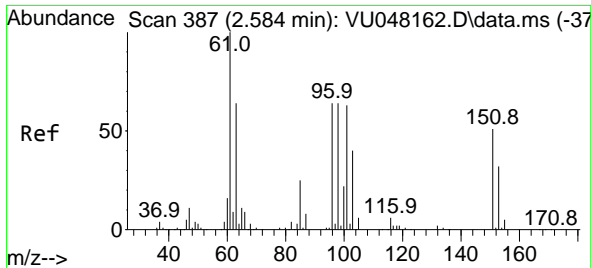
Tgt Ion: 64 Resp: 94198
 Ion Ratio Lower Upper
 64 100
 66 31.8 23.3 43.3



#9
 Trichlorofluoromethane
 Concen: 45.619 ug/L
 RT: 2.141 min Scan# 249
 Delta R.T. -0.000 min
 Lab File: VU048186.D
 Acq: 21 Apr 2022 20:26

Tgt Ion: 101 Resp: 196736
 Ion Ratio Lower Upper
 101 100
 103 64.6 51.4 77.2



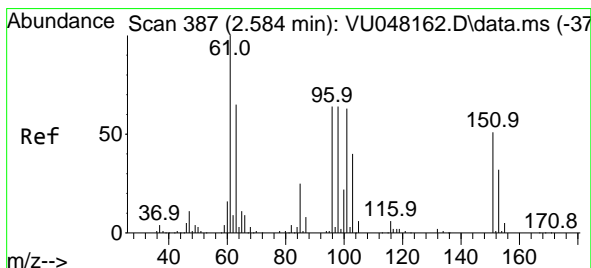
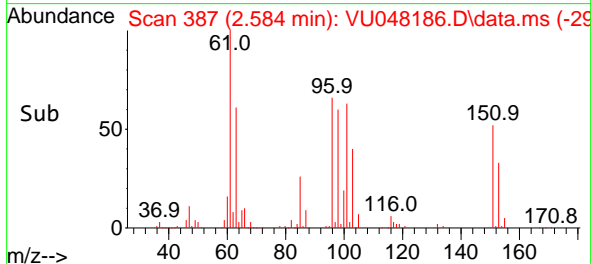
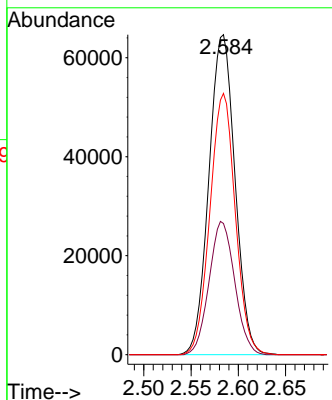
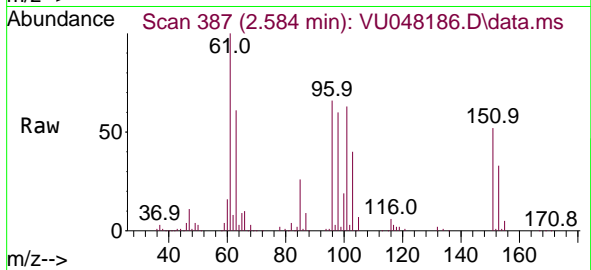


#10
 1,1,2-Trichloro-1,2,2-trifluoroethane
 Concen: 49.849 ug/L
 RT: 2.584 min Scan# 387
 Delta R.T. -0.000 min
 Lab File: VU048186.D
 Acq: 21 Apr 2022 20:26

Instrument :
 MSVOA_U
 ClientSampleId :
 VSTD050093

Tgt Ion:101 Resp: 124265

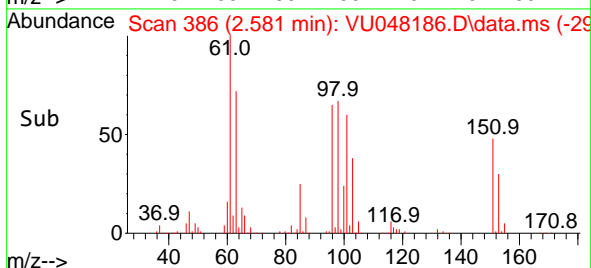
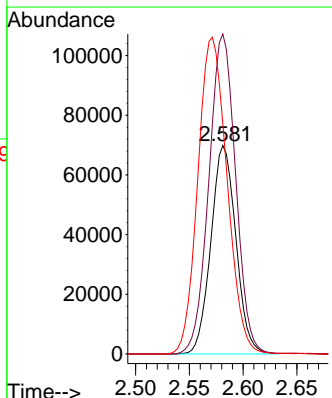
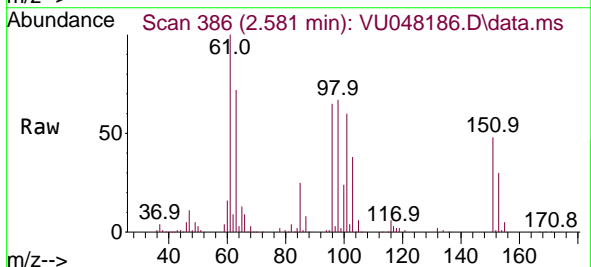
Ion	Ratio	Lower	Upper
101	100		
85	40.8	32.8	49.2
151	79.3	63.0	94.6

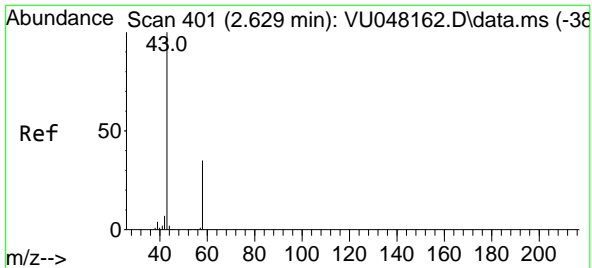


#12
 1,1-Dichloroethene
 Concen: 48.677 ug/L
 RT: 2.581 min Scan# 386
 Delta R.T. -0.003 min
 Lab File: VU048186.D
 Acq: 21 Apr 2022 20:26

Tgt Ion: 96 Resp: 112931

Ion	Ratio	Lower	Upper
96	100		
61	153.5	113.1	210.1
63	110.5	94.8	176.0





#13

Acetone

Concen: 76.710 ug/L

RT: 2.623 min Scan# 399

Delta R.T. -0.007 min

Lab File: VU048186.D

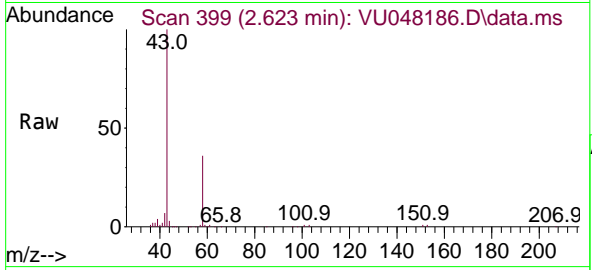
Acq: 21 Apr 2022 20:26

Instrument :

MSVOA_U

ClientSampleId :

VSTD050093

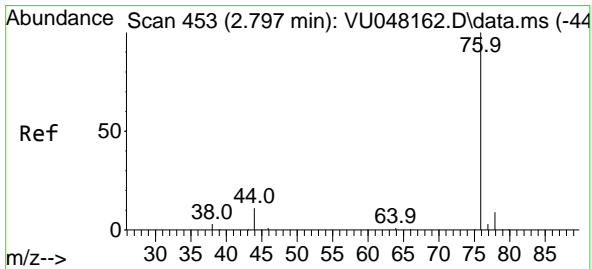
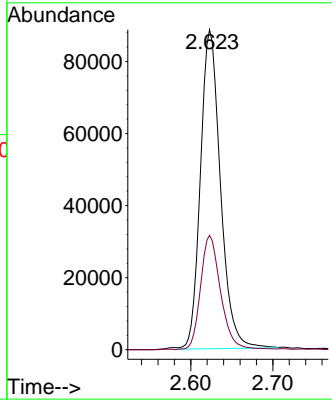
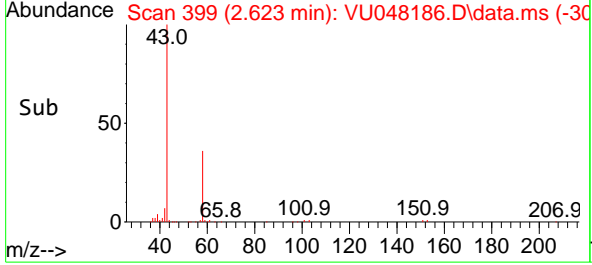


Tgt Ion: 43 Resp: 150275

Ion Ratio Lower Upper

43 100

58 35.9 0.0 70.0



#14

Carbon disulfide

Concen: 38.705 ug/L

RT: 2.796 min Scan# 453

Delta R.T. -0.000 min

Lab File: VU048186.D

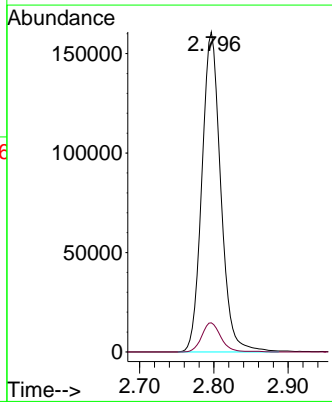
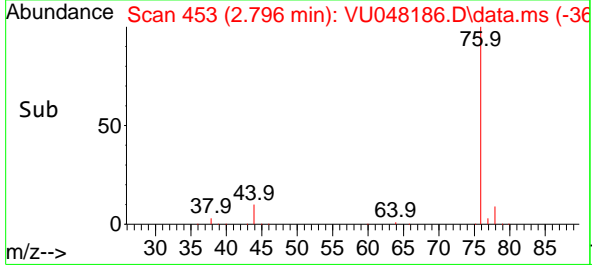
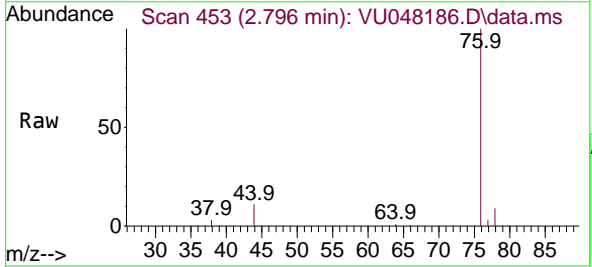
Acq: 21 Apr 2022 20:26

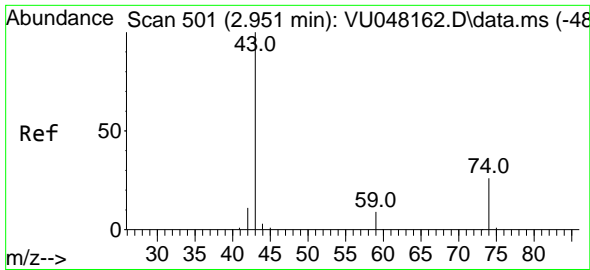
Tgt Ion: 76 Resp: 283835

Ion Ratio Lower Upper

76 100

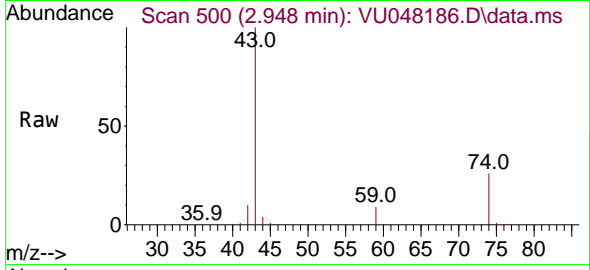
78 9.1 7.4 11.0



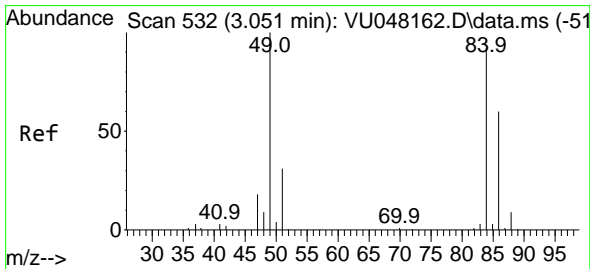
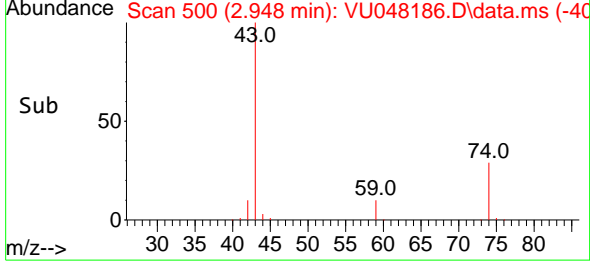
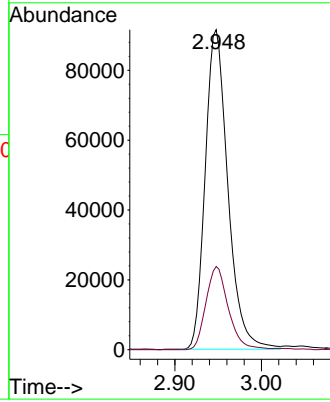


#15
 Methyl Acetate
 Concen: 53.293 ug/L
 RT: 2.948 min Scan# 500
 Delta R.T. -0.003 min
 Lab File: VU048186.D
 Acq: 21 Apr 2022 20:26

Instrument : MSVOA_U
 ClientSampleId : VSTD050093

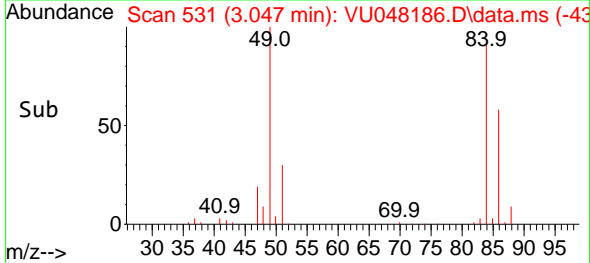
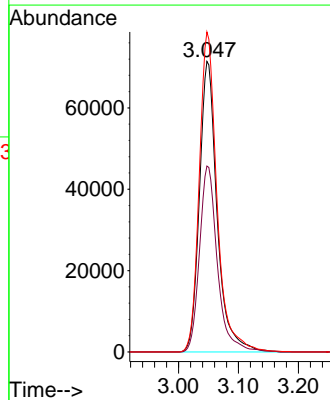
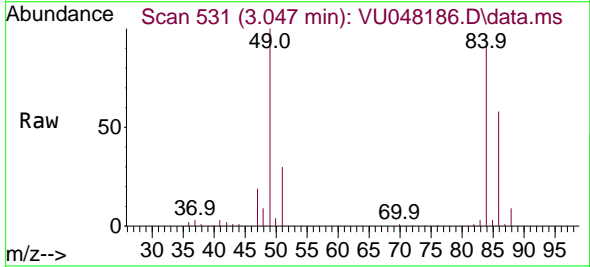


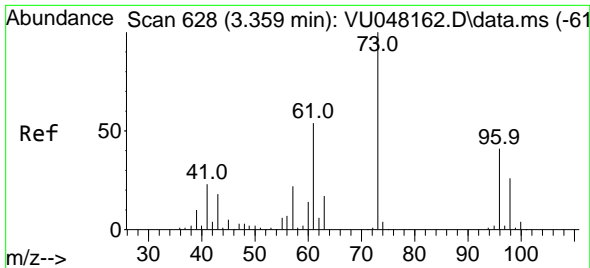
Tgt Ion: 43 Resp: 166479
 Ion Ratio Lower Upper
 43 100
 74 25.7 22.2 33.2



#16
 Methylene chloride
 Concen: 55.261 ug/L
 RT: 3.047 min Scan# 531
 Delta R.T. -0.003 min
 Lab File: VU048186.D
 Acq: 21 Apr 2022 20:26

Tgt Ion: 84 Resp: 147119
 Ion Ratio Lower Upper
 84 100
 86 64.0 46.0 85.4
 49 110.1 75.3 139.8



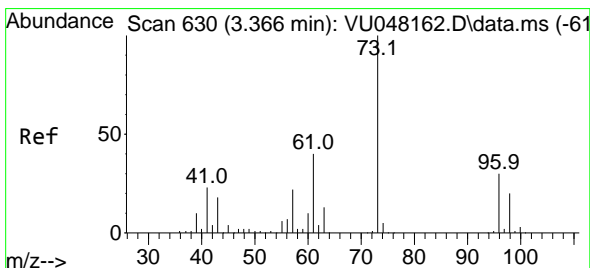
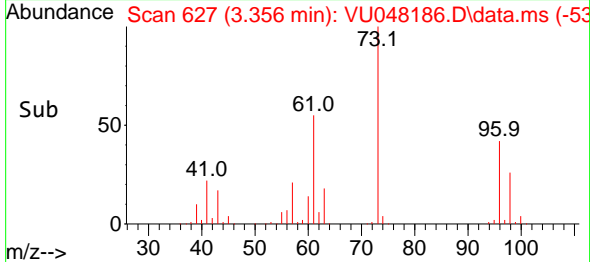
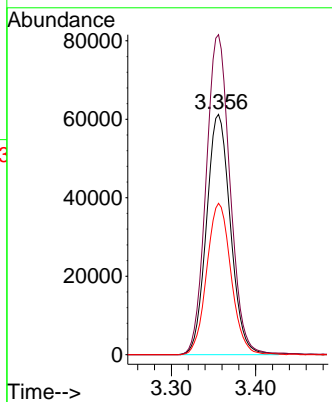
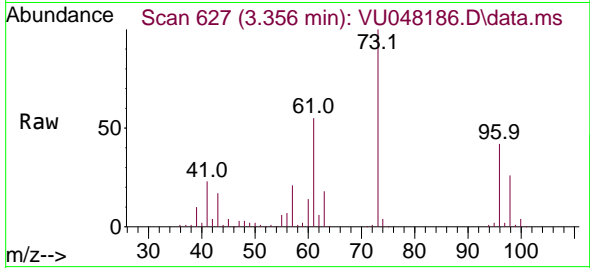


#17
 trans-1,2-Dichloroethene
 Concen: 48.487 ug/L
 RT: 3.356 min Scan# 61
 Delta R.T. -0.003 min
 Lab File: VU048186.D
 Acq: 21 Apr 2022 20:26

Instrument : MSVOA_U
 ClientSampleId : VSTD050093

Tgt Ion: 96 Resp: 121332

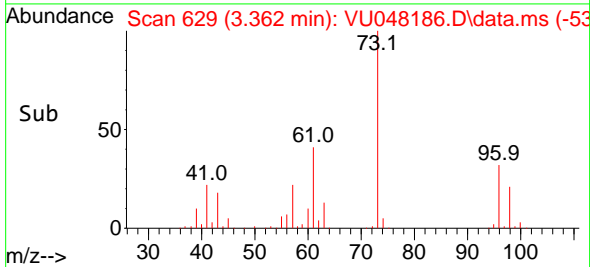
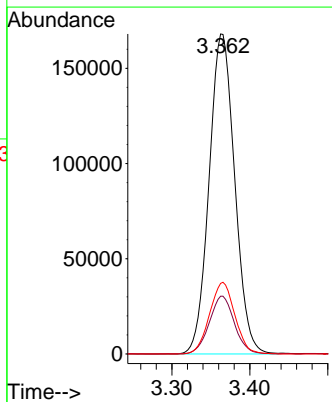
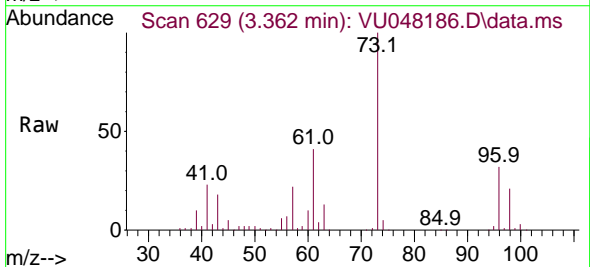
Ion	Ratio	Lower	Upper
96	100		
61	133.1	88.4	164.2
98	63.0	43.3	80.5

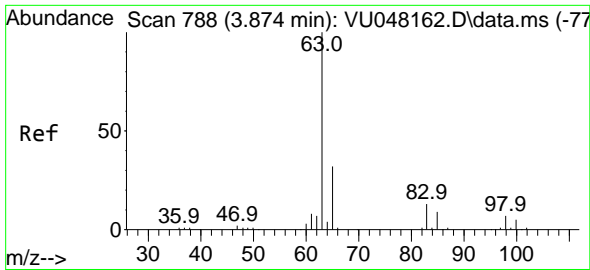


#18
 Methyl tert-butyl Ether
 Concen: 54.338 ug/L
 RT: 3.362 min Scan# 629
 Delta R.T. -0.003 min
 Lab File: VU048186.D
 Acq: 21 Apr 2022 20:26

Tgt Ion: 73 Resp: 383610

Ion	Ratio	Lower	Upper
73	100		
43	17.8	15.3	22.9
57	22.1	17.0	25.6



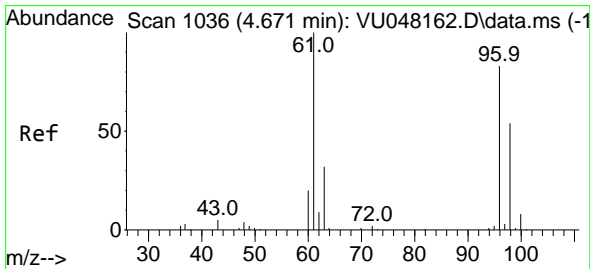
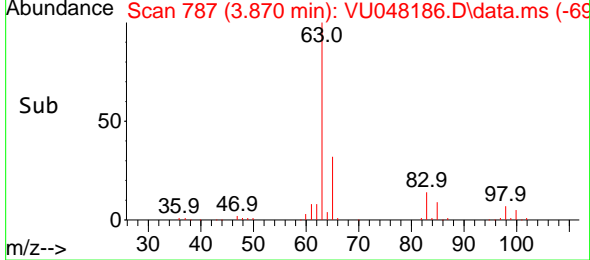
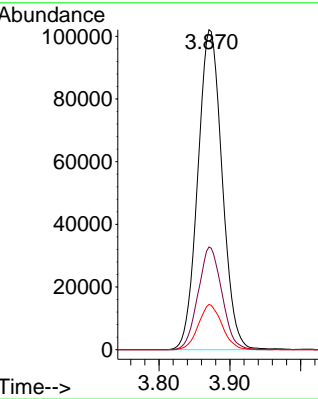
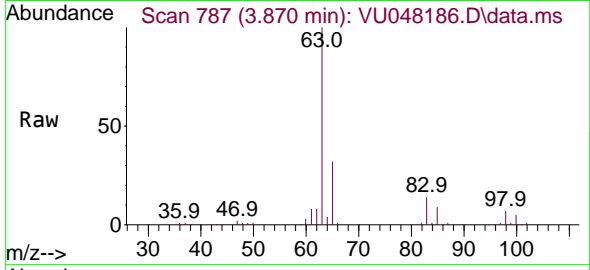


#19
 1,1-Dichloroethane
 Concen: 56.288 ug/L
 RT: 3.870 min Scan# 788
 Delta R.T. -0.003 min
 Lab File: VU048186.D
 Acq: 21 Apr 2022 20:26

Instrument : MSVOA_U
 ClientSampleId : VSTD050093

Tgt Ion: 63 Resp: 242920

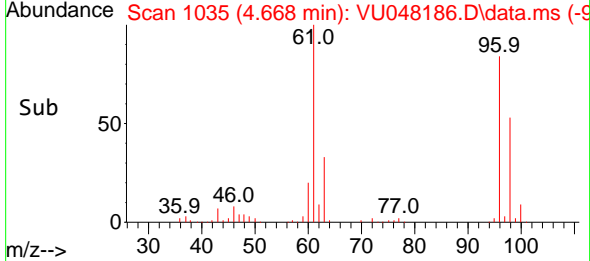
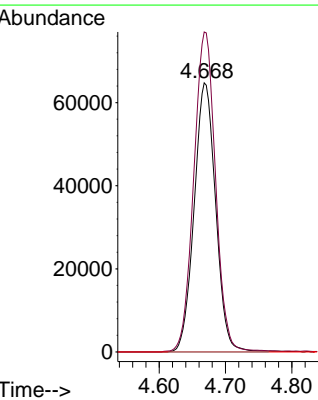
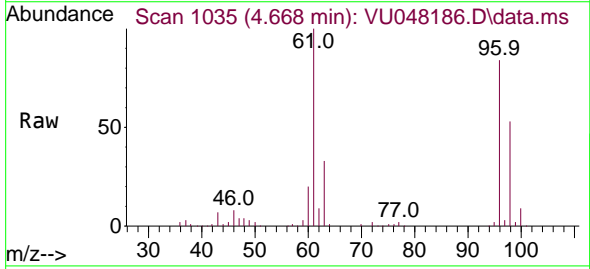
Ion	Ratio	Lower	Upper
63	100		
65	32.1	22.0	41.0
83	14.2	9.7	18.1

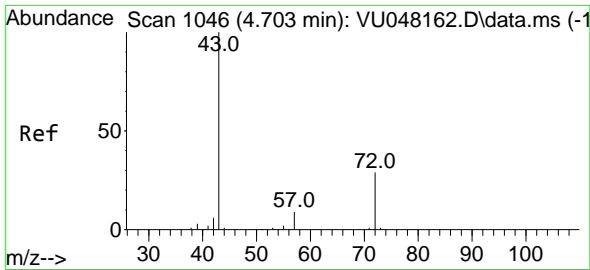


#20
 cis-1,2-Dichloroethene
 Concen: 53.129 ug/L
 RT: 4.668 min Scan# 1035
 Delta R.T. -0.003 min
 Lab File: VU048186.D
 Acq: 21 Apr 2022 20:26

Tgt Ion: 96 Resp: 145751

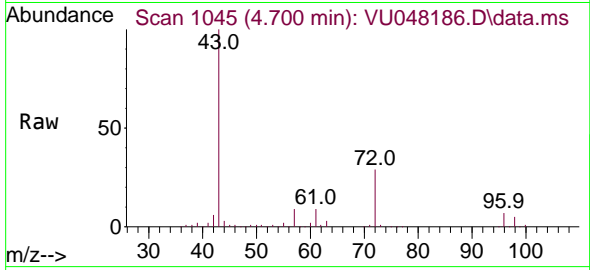
Ion	Ratio	Lower	Upper
96	100		
61	118.9	80.7	149.9
68	0.0	0.0	0.0



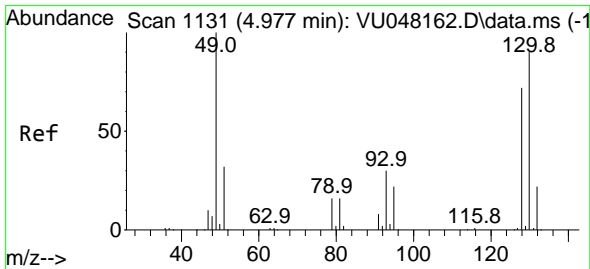
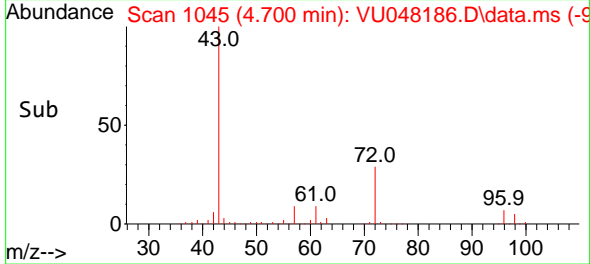
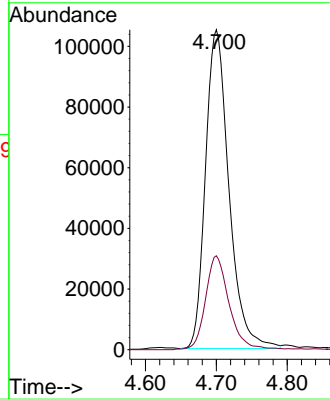


#22
 2-Butanone
 Concen: 95.926 ug/L
 RT: 4.700 min Scan# 1046
 Delta R.T. -0.003 min
 Lab File: VU048186.D
 Acq: 21 Apr 2022 20:26

Instrument : MSVOA_U
 ClientSampleId : VSTD050093

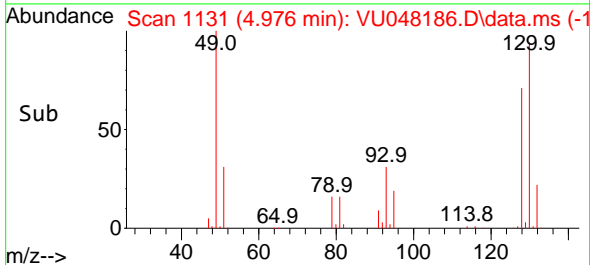
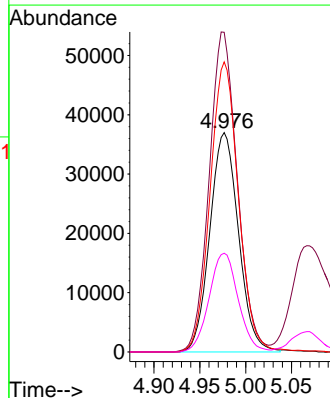
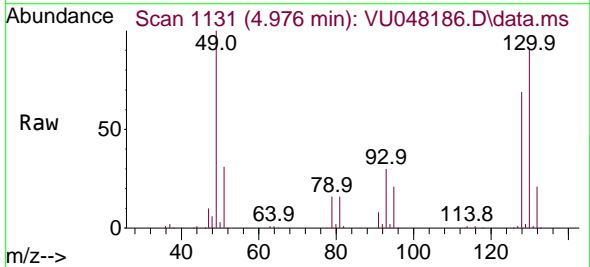


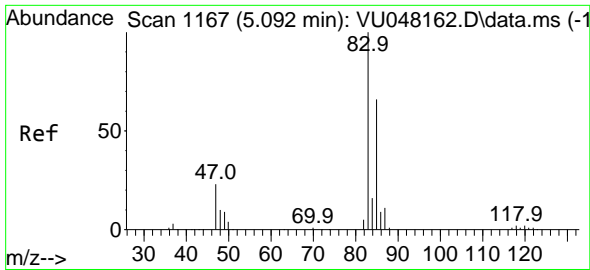
Tgt Ion: 43 Resp: 242073
 Ion Ratio Lower Upper
 43 100
 72 29.6 16.0 47.9



#23
 Bromochloromethane
 Concen: 53.449 ug/L
 RT: 4.976 min Scan# 1131
 Delta R.T. -0.000 min
 Lab File: VU048186.D
 Acq: 21 Apr 2022 20:26

Tgt Ion:128 Resp: 80506
 Ion Ratio Lower Upper
 128 100
 49 145.7 94.1 174.8
 130 132.3 90.2 167.4
 51 45.0 35.8 53.6

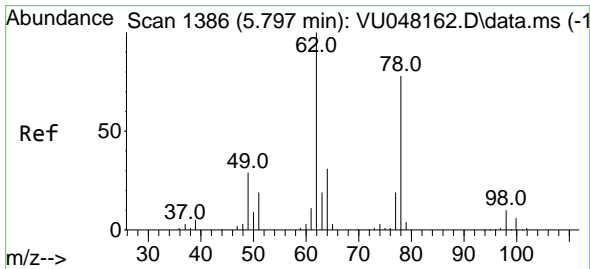
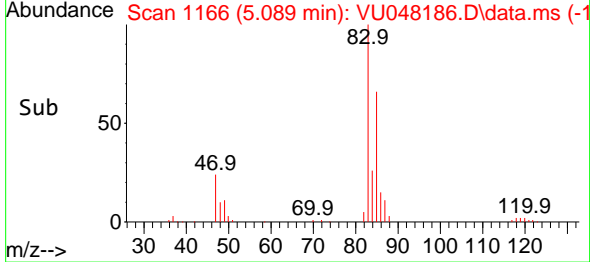
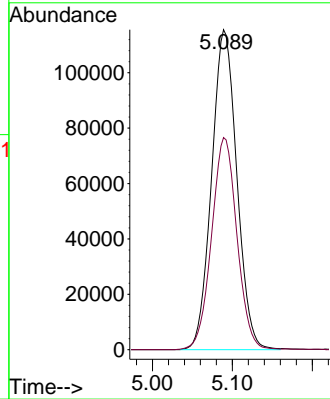
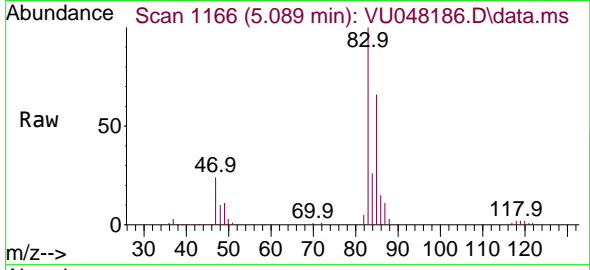




#25
 Chloroform
 Concen: 54.429 ug/L
 RT: 5.089 min Scan# 1166
 Delta R.T. -0.003 min
 Lab File: VU048186.D
 Acq: 21 Apr 2022 20:26

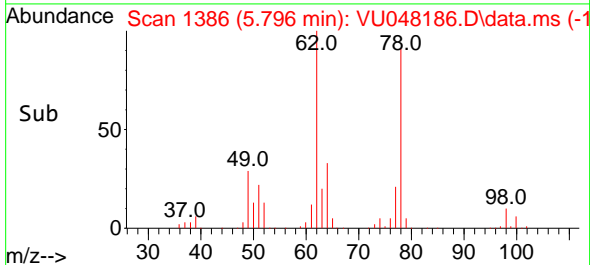
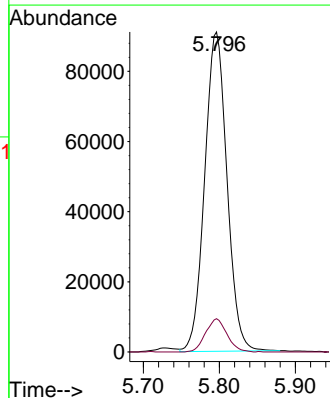
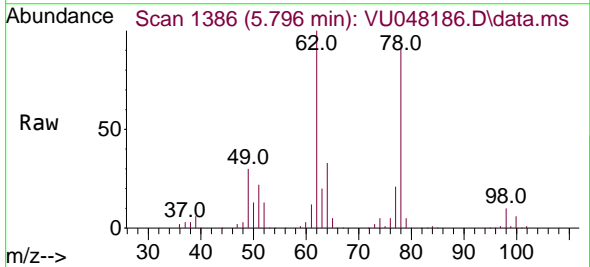
Instrument : MSVOA_U
 ClientSampleId : VSTD050093

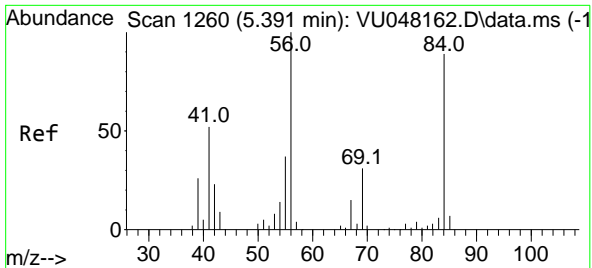
Tgt Ion: 83 Resp: 252898
 Ion Ratio Lower Upper
 83 100
 85 66.3 46.2 85.8



#27
 1,2-Dichloroethane
 Concen: 51.611 ug/L
 RT: 5.796 min Scan# 1386
 Delta R.T. -0.000 min
 Lab File: VU048186.D
 Acq: 21 Apr 2022 20:26

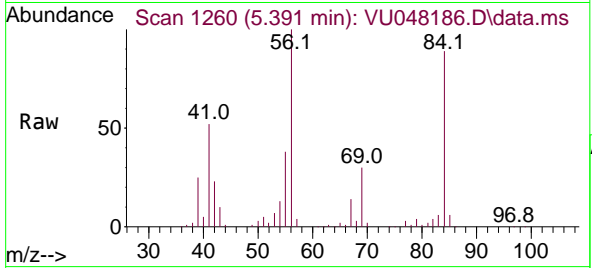
Tgt Ion: 62 Resp: 185270
 Ion Ratio Lower Upper
 62 100
 98 10.4 7.4 11.0





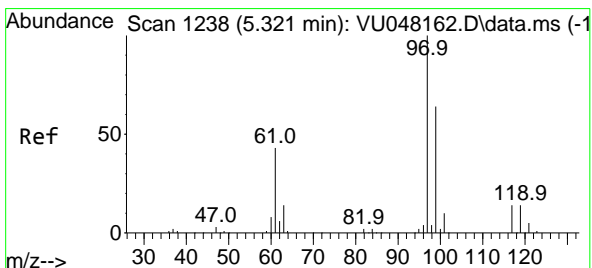
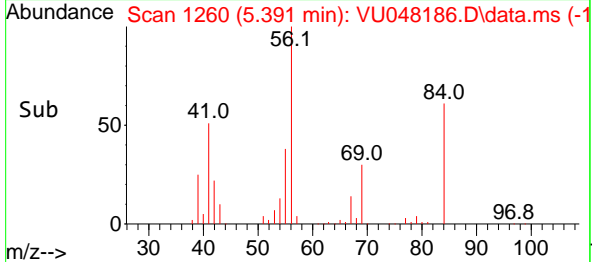
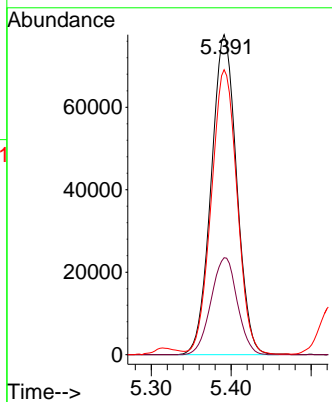
#29
 Cyclohexane
 Concen: 48.187 ug/L
 RT: 5.391 min Scan# 1260
 Delta R.T. -0.000 min
 Lab File: VU048186.D
 Acq: 21 Apr 2022 20:26

Instrument : MSVOA_U
 ClientSampleId : VSTD050093

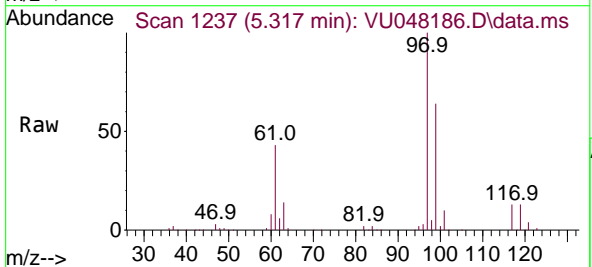


Tgt Ion: 56 Resp: 171654

Ion	Ratio	Lower	Upper
56	100		
69	31.2	25.4	38.2
84	90.4	77.0	115.6

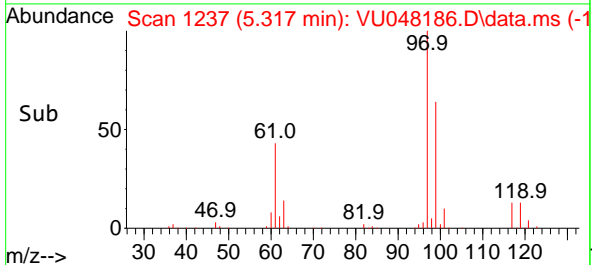
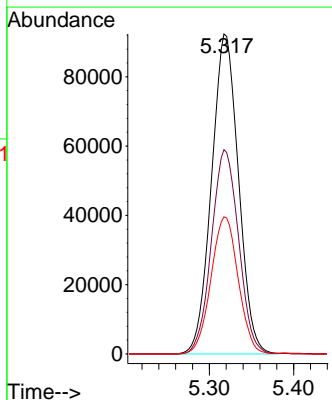


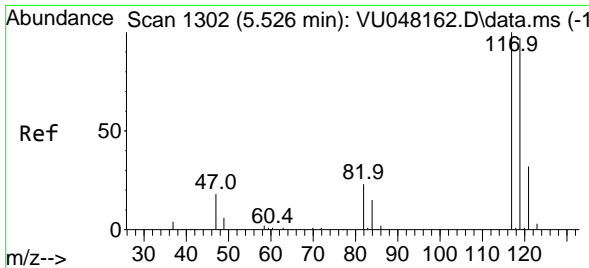
#30
 1,1,1-Trichloroethane
 Concen: 51.511 ug/L
 RT: 5.317 min Scan# 1237
 Delta R.T. -0.003 min
 Lab File: VU048186.D
 Acq: 21 Apr 2022 20:26



Tgt Ion: 97 Resp: 205045

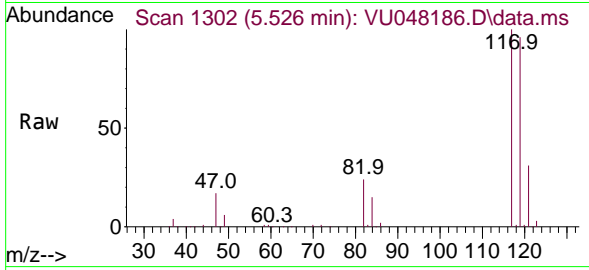
Ion	Ratio	Lower	Upper
97	100		
99	64.4	51.6	77.4
61	43.3	34.2	51.4



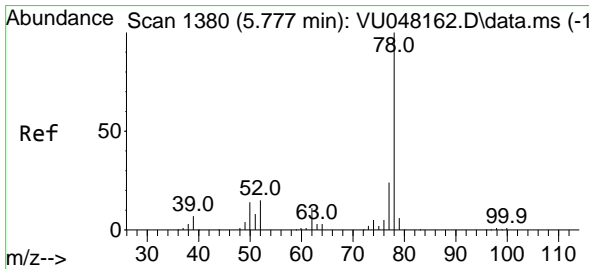
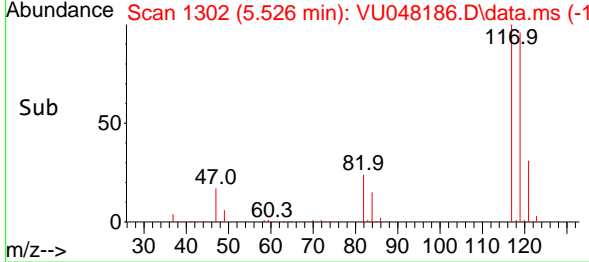
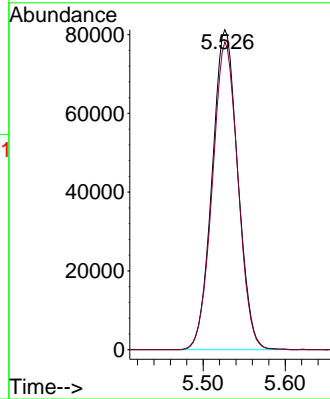


#31
 Carbon tetrachloride
 Concen: 49.161 ug/L
 RT: 5.526 min Scan# 1117
 Delta R.T. -0.000 min
 Lab File: VU048186.D
 Acq: 21 Apr 2022 20:26

Instrument : MSVOA_U
 ClientSampleId : VSTD050093

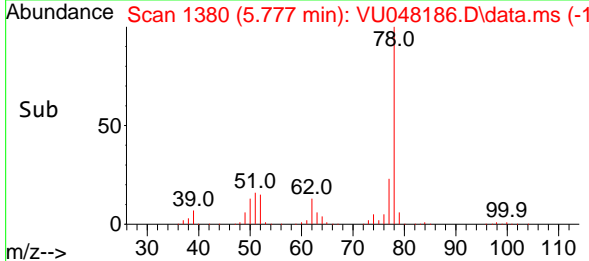
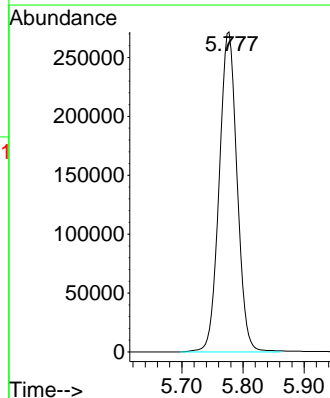
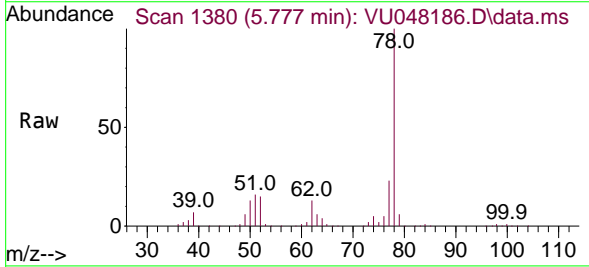


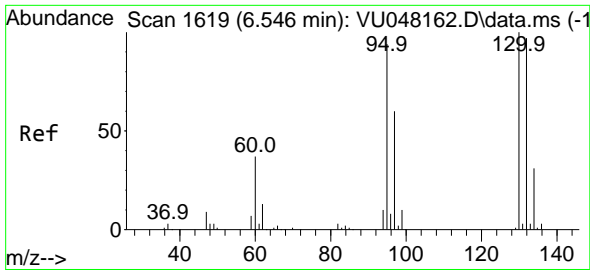
Tgt Ion:117 Resp: 176706
 Ion Ratio Lower Upper
 117 100
 119 95.5 77.2 115.8



#33
 Benzene
 Concen: 54.476 ug/L
 RT: 5.777 min Scan# 1380
 Delta R.T. -0.000 min
 Lab File: VU048186.D
 Acq: 21 Apr 2022 20:26

Tgt Ion: 78 Resp: 553549





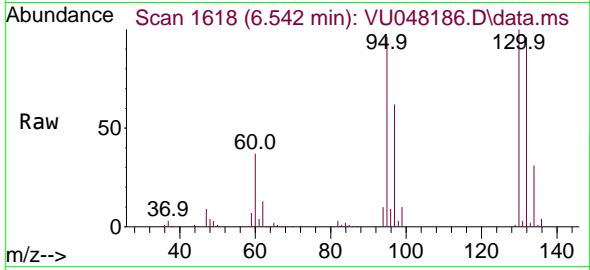
#34
 Trichloroethene
 Concen: 51.191 ug/L
 RT: 6.542 min Scan# 1618
 Delta R.T. -0.003 min
 Lab File: VU048186.D
 Acq: 21 Apr 2022 20:26

Instrument :

MSVOA_U

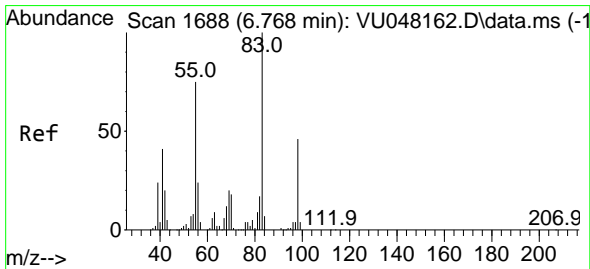
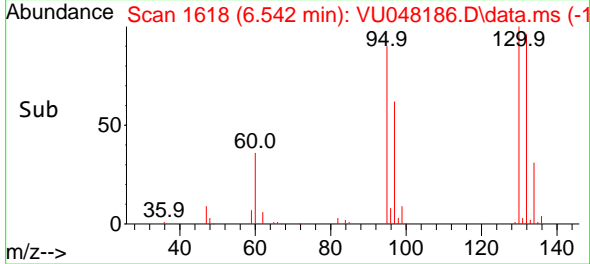
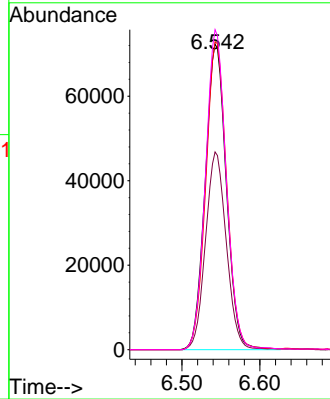
ClientSampleId :

VSTD050093



Tgt Ion: 95 Resp: 136372

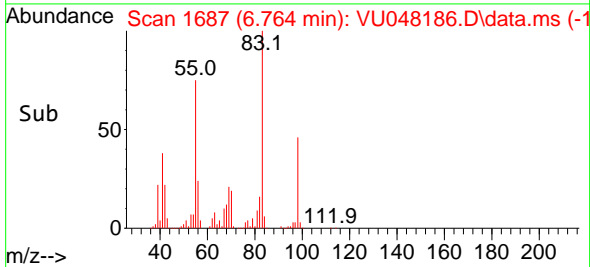
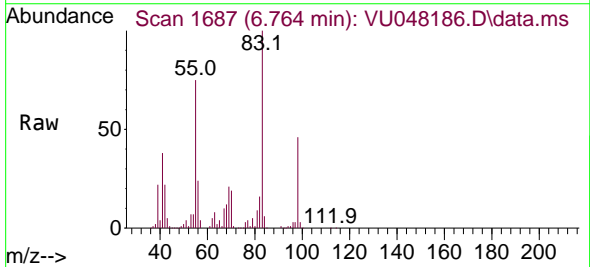
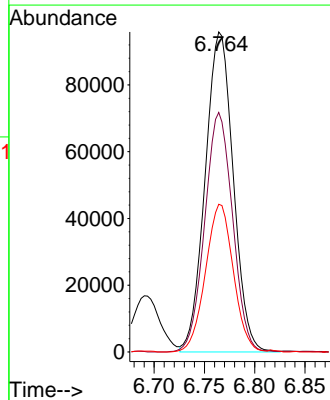
Ion	Ratio	Lower	Upper
95	100		
97	64.7	44.7	82.9
132	100.8	70.4	130.8
130	104.7	73.6	136.8

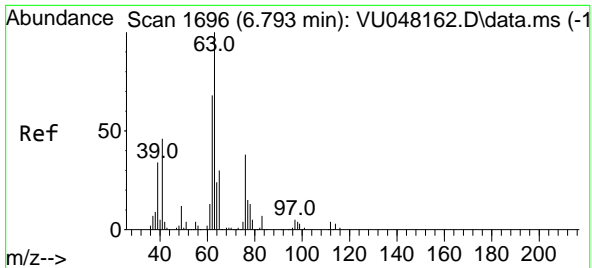


#35
 Methylcyclohexane
 Concen: 45.950 ug/L
 RT: 6.764 min Scan# 1687
 Delta R.T. -0.003 min
 Lab File: VU048186.D
 Acq: 21 Apr 2022 20:26

Tgt Ion: 83 Resp: 186226

Ion	Ratio	Lower	Upper
83	100		
55	74.3	56.8	85.2
98	45.7	38.1	57.1

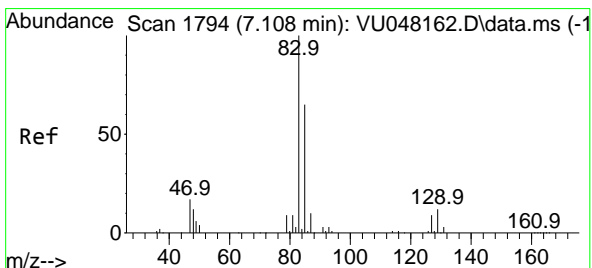
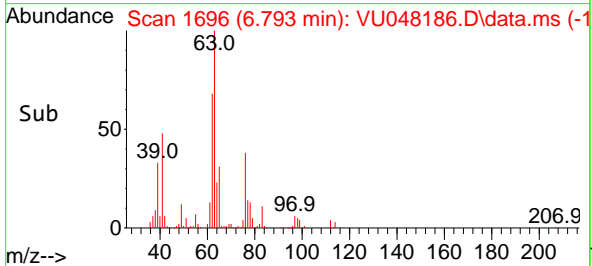
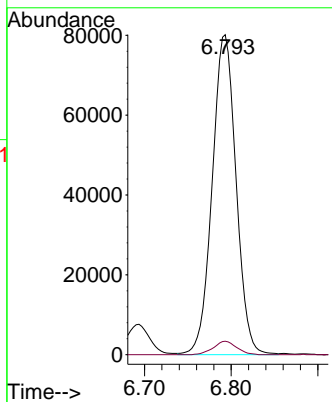
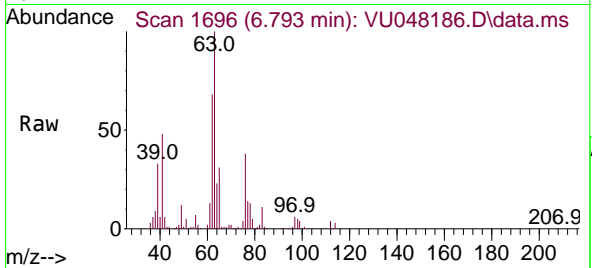




#37
 1,2-Dichloropropane
 Concen: 59.378 ug/L
 RT: 6.793 min Scan# 1696
 Delta R.T. -0.000 min
 Lab File: VU048186.D
 Acq: 21 Apr 2022 20:26

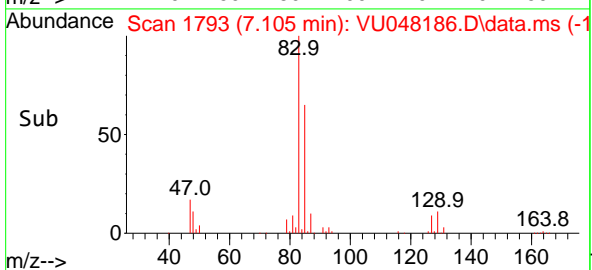
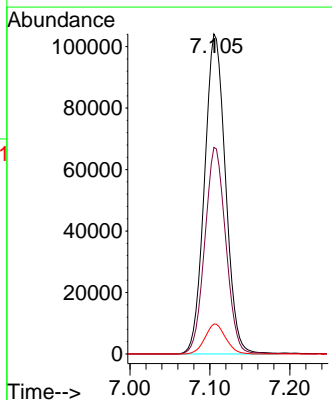
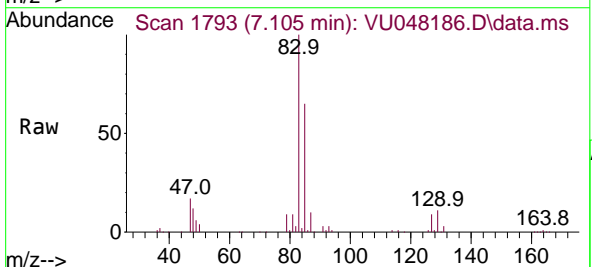
Instrument : MSVOA_U
 ClientSampleId : VSTD050093

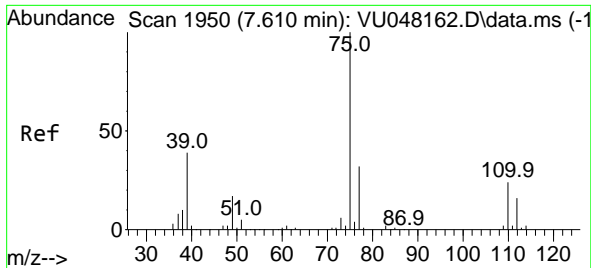
Tgt Ion: 63 Resp: 153382
 Ion Ratio Lower Upper
 63 100
 112 4.1 3.4 5.2



#38
 Bromodichloromethane
 Concen: 53.649 ug/L
 RT: 7.105 min Scan# 1793
 Delta R.T. -0.003 min
 Lab File: VU048186.D
 Acq: 21 Apr 2022 20:26

Tgt Ion: 83 Resp: 190306
 Ion Ratio Lower Upper
 83 100
 85 64.6 44.4 82.4
 127 9.4 7.2 10.8





#39
 cis-1,3-Dichloropropene
 Concen: 51.930 ug/L
 RT: 7.607 min Scan# 1950
 Delta R.T. -0.003 min
 Lab File: VU048186.D
 Acq: 21 Apr 2022 20:26

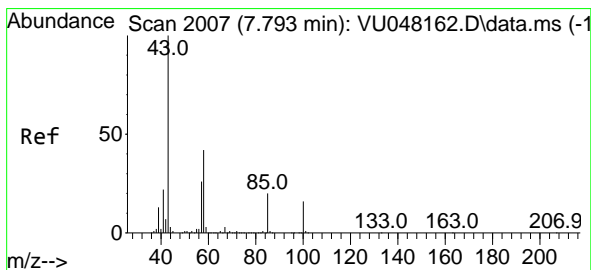
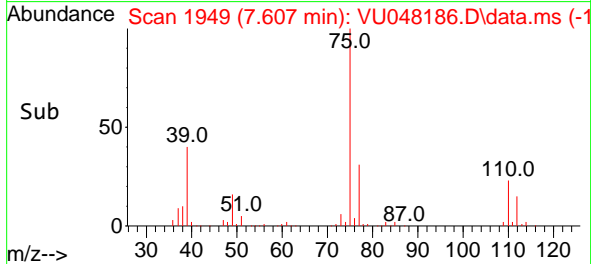
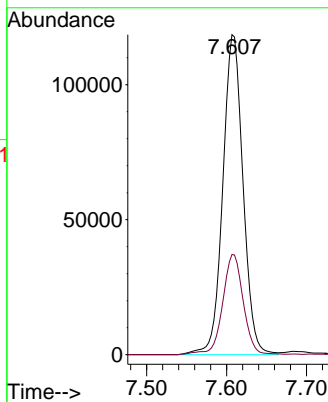
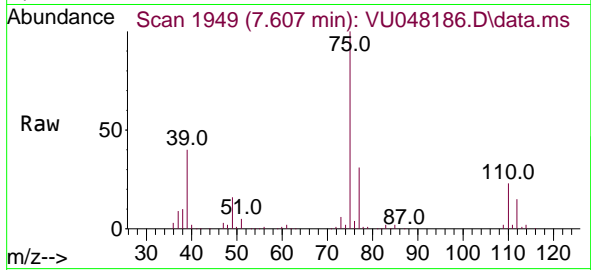
Instrument :

MSVOA_U

ClientSampleId :

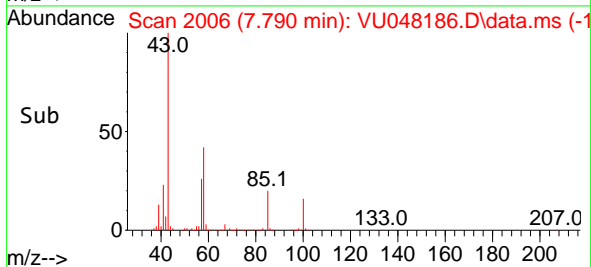
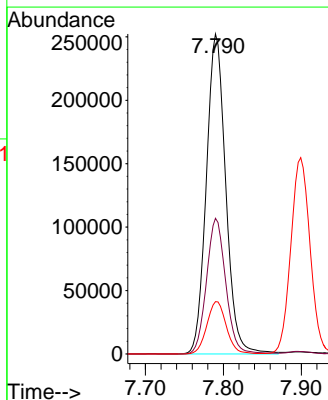
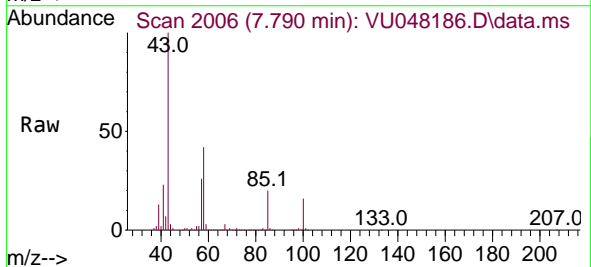
VSTD050093

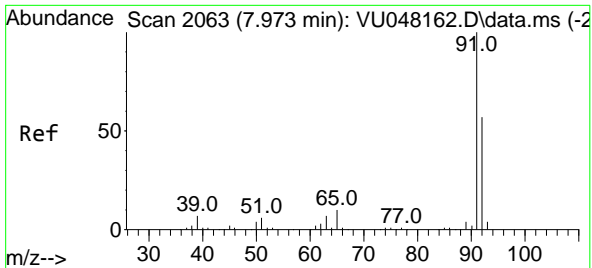
Tgt Ion: 75 Resp: 208140
 Ion Ratio Lower Upper
 75 100
 77 31.3 21.8 40.6



#40
 4-Methyl-2-pentanone
 Concen: 107.258 ug/L
 RT: 7.790 min Scan# 2006
 Delta R.T. -0.003 min
 Lab File: VU048186.D
 Acq: 21 Apr 2022 20:26

Tgt Ion: 43 Resp: 437898
 Ion Ratio Lower Upper
 43 100
 58 42.1 34.7 52.1
 100 16.4 14.2 21.2

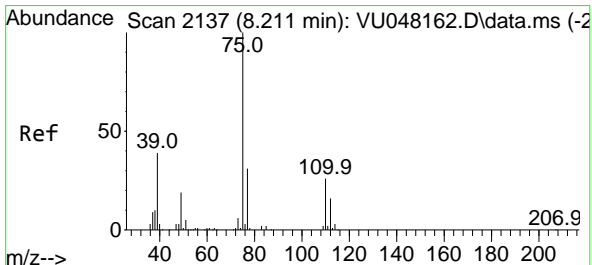
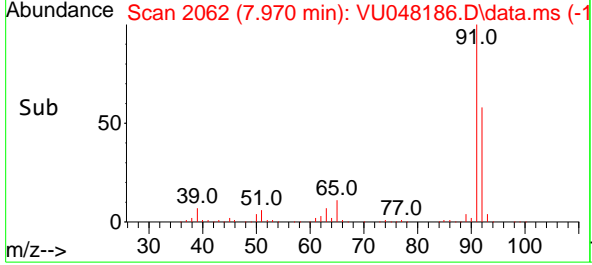
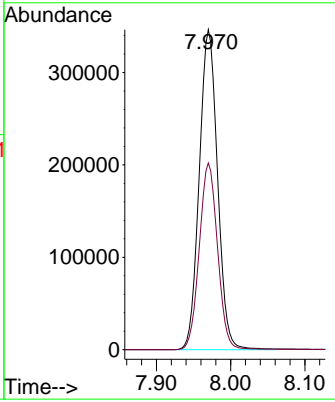
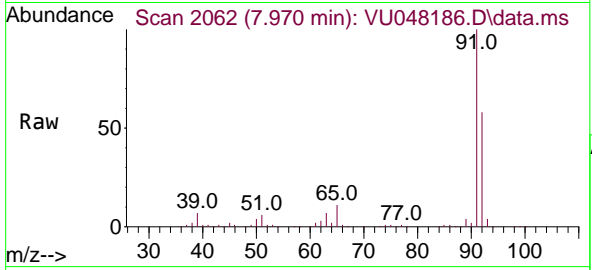




#42
 Toluene
 Concen: 53.070 ug/L
 RT: 7.970 min Scan# 2063
 Delta R.T. -0.003 min
 Lab File: VU048186.D
 Acq: 21 Apr 2022 20:26

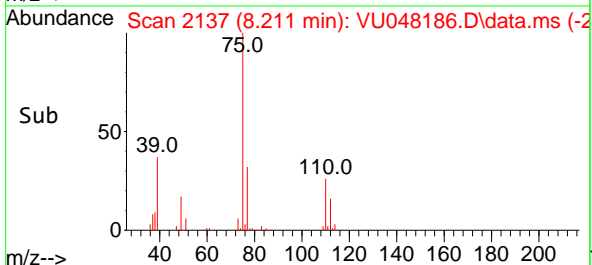
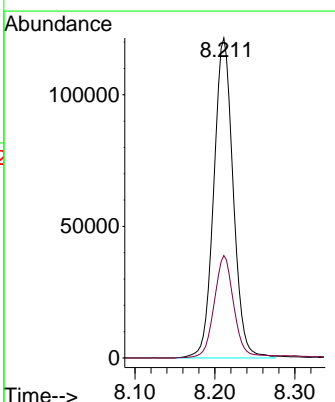
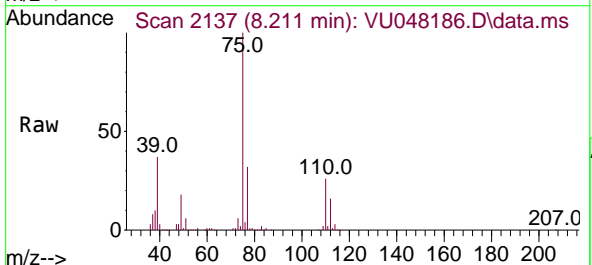
Instrument : MSVOA_U
 ClientSampleId : VSTD050093

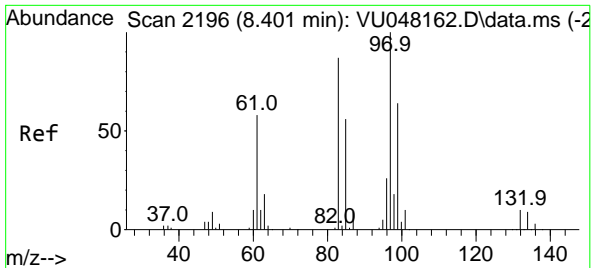
Tgt Ion: 91 Resp: 591696
 Ion Ratio Lower Upper
 91 100
 92 58.4 40.4 75.0



#44
 trans-1,3-Dichloropropene
 Concen: 51.027 ug/L
 RT: 8.211 min Scan# 2137
 Delta R.T. -0.000 min
 Lab File: VU048186.D
 Acq: 21 Apr 2022 20:26

Tgt Ion: 75 Resp: 204205
 Ion Ratio Lower Upper
 75 100
 77 32.0 22.0 40.8





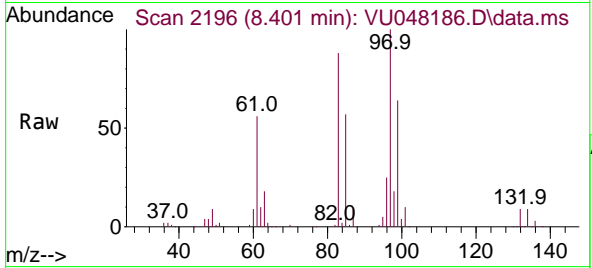
#45
 1,1,2-Trichloroethane
 Concen: 55.923 ug/L
 RT: 8.401 min Scan# 2196
 Delta R.T. -0.000 min
 Lab File: VU048186.D
 Acq: 21 Apr 2022 20:26

Instrument :

MSVOA_U

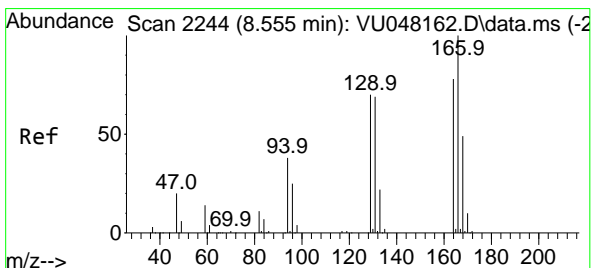
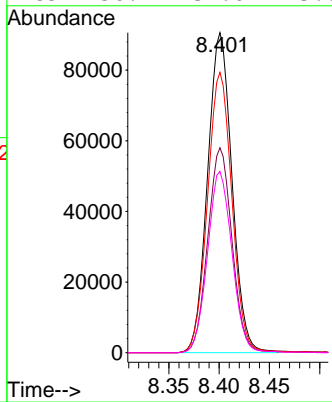
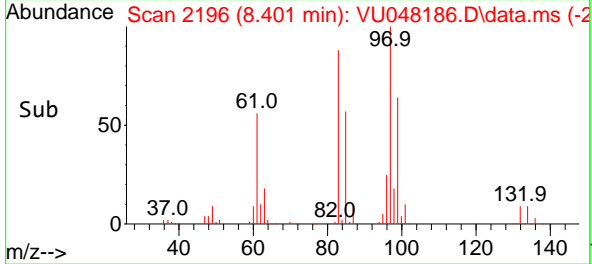
ClientSampleId :

VSTD050093

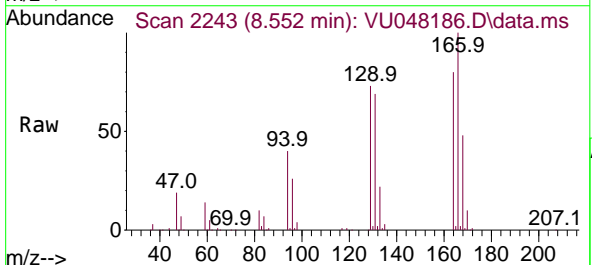


Tgt Ion: 97 Resp: 153208

Ion	Ratio	Lower	Upper
97	100		
99	64.1	43.3	80.3
83	87.6	61.0	113.4
85	56.7	39.6	73.6

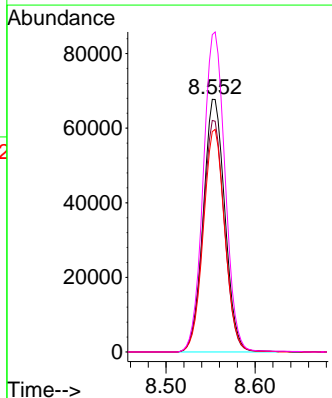
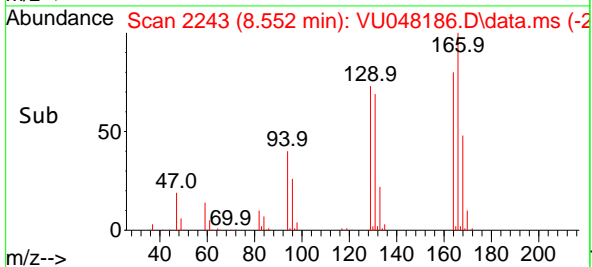


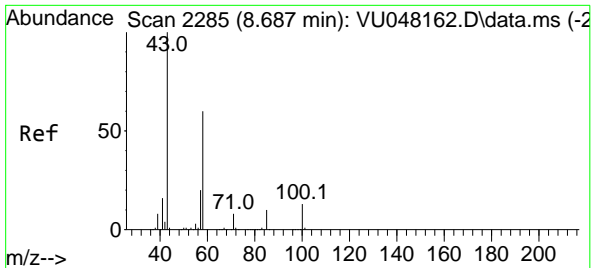
#46
 Tetrachloroethene
 Concen: 47.868 ug/L
 RT: 8.552 min Scan# 2243
 Delta R.T. -0.003 min
 Lab File: VU048186.D
 Acq: 21 Apr 2022 20:26



Tgt Ion: 164 Resp: 114595

Ion	Ratio	Lower	Upper
164	100		
129	91.6	62.4	116.0
131	87.2	60.7	112.7
166	125.6	89.0	165.4





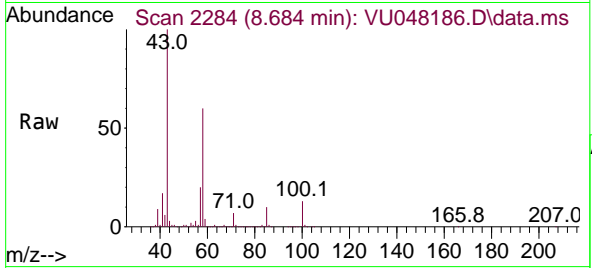
#48
 2-Hexanone
 Concen: 101.785 ug/L
 RT: 8.684 min Scan# 21
 Delta R.T. -0.003 min
 Lab File: VU048186.D
 Acq: 21 Apr 2022 20:26

Instrument :

MSVOA_U

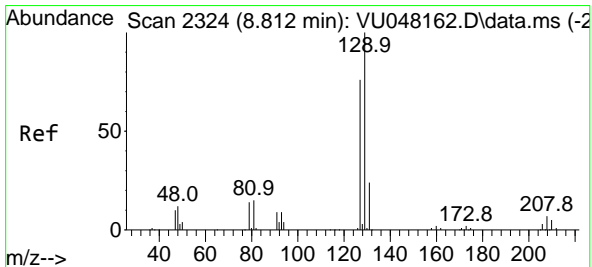
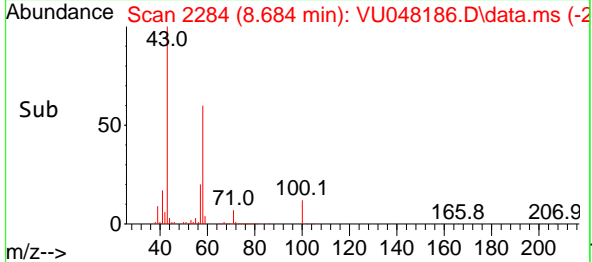
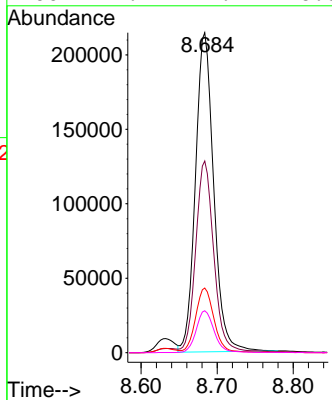
ClientSampleId :

VSTD050093



Tgt Ion: 43 Resp: 357452

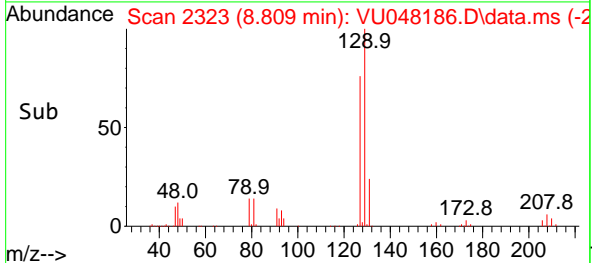
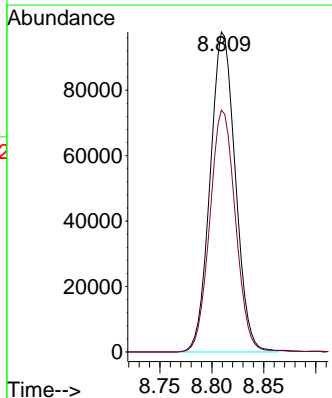
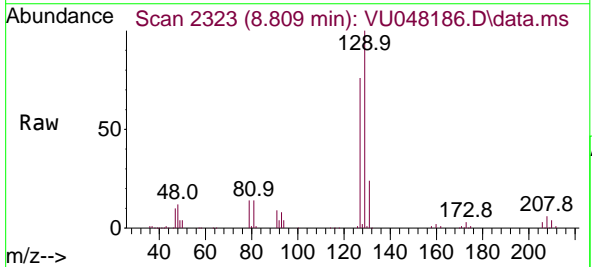
Ion	Ratio	Lower	Upper
43	100		
58	58.2	48.1	72.1
57	20.1	16.2	24.4
100	12.9	11.2	16.8

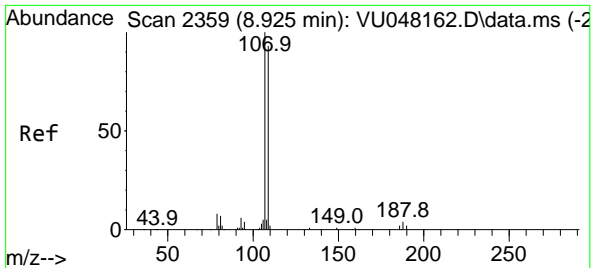


#49
 Dibromochloromethane
 Concen: 51.919 ug/L
 RT: 8.809 min Scan# 2323
 Delta R.T. -0.003 min
 Lab File: VU048186.D
 Acq: 21 Apr 2022 20:26

Tgt Ion: 129 Resp: 164743

Ion	Ratio	Lower	Upper
129	100		
127	75.6	54.2	100.6





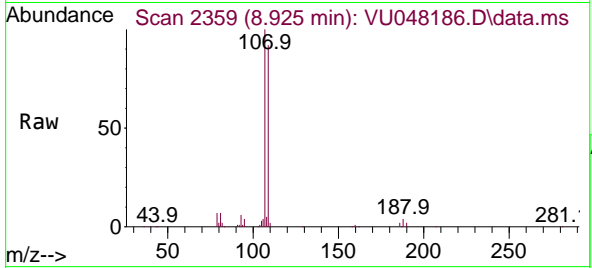
#50
 1,2-Dibromoethane
 Concen: 52.231 ug/L
 RT: 8.925 min Scan# 21
 Delta R.T. -0.000 min
 Lab File: VU048186.D
 Acq: 21 Apr 2022 20:26

Instrument :

MSVOA_U

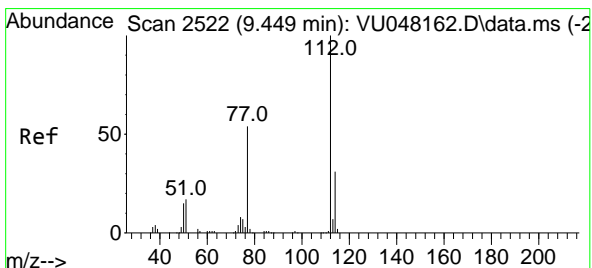
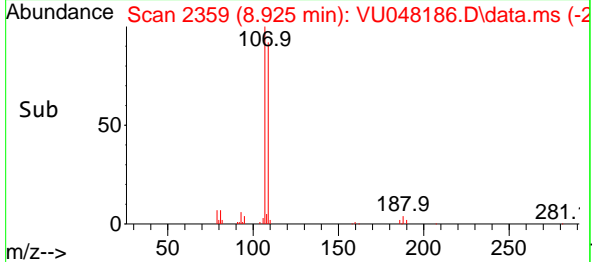
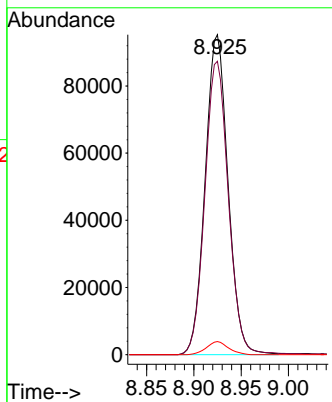
ClientSampleId :

VSTD050093



Tgt Ion:107 Resp: 160419

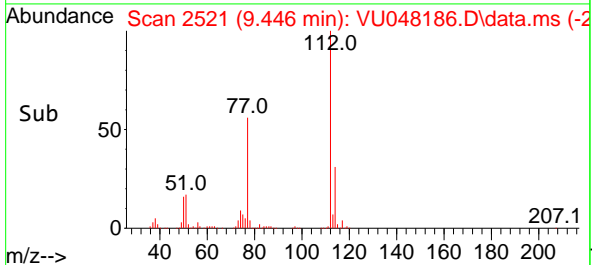
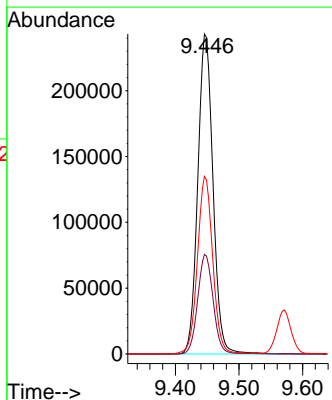
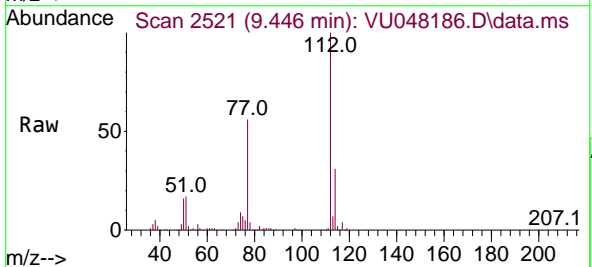
Ion	Ratio	Lower	Upper
107	100		
109	91.7	66.6	123.6
188	4.1	3.4	5.2

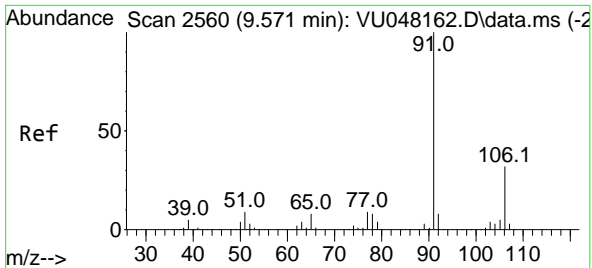


#51
 Chlorobenzene
 Concen: 53.303 ug/L
 RT: 9.446 min Scan# 2521
 Delta R.T. -0.003 min
 Lab File: VU048186.D
 Acq: 21 Apr 2022 20:26

Tgt Ion:112 Resp: 403520

Ion	Ratio	Lower	Upper
112	100		
114	31.1	22.1	41.1
77	55.5	43.4	65.0

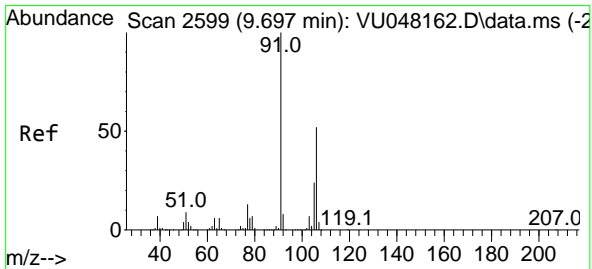
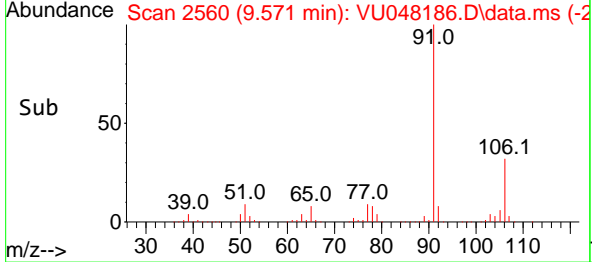
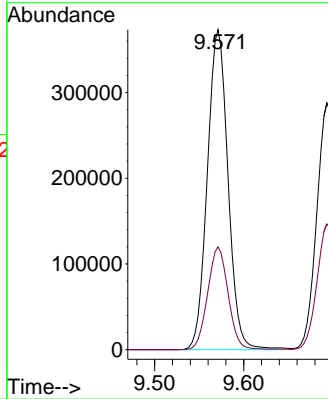
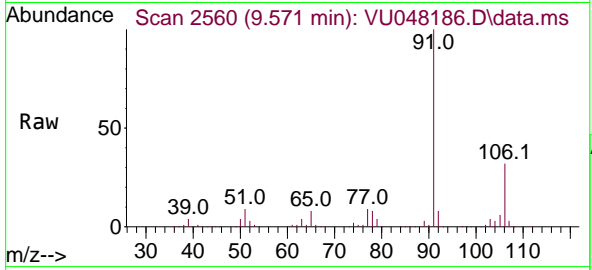




#52
 Ethylbenzene
 Concen: 51.288 ug/L
 RT: 9.571 min Scan# 2560
 Delta R.T. -0.000 min
 Lab File: VU048186.D
 Acq: 21 Apr 2022 20:26

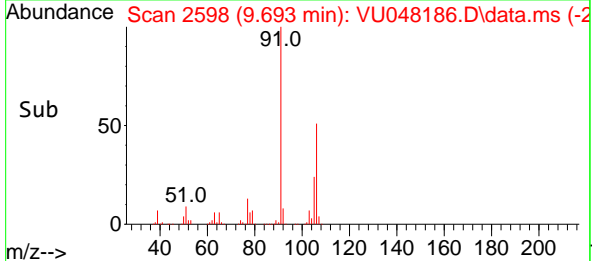
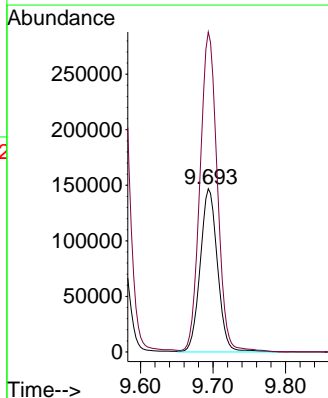
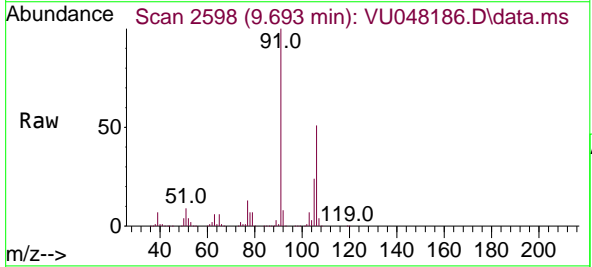
Instrument : MSVOA_U
 ClientSampleId : VSTD050093

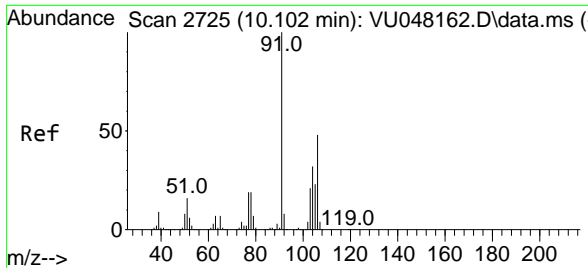
Tgt Ion: 91 Resp: 601258
 Ion Ratio Lower Upper
 91 100
 106 32.1 22.4 41.6



#53
 m,p-Xylene
 Concen: 52.891 ug/L
 RT: 9.693 min Scan# 2598
 Delta R.T. -0.003 min
 Lab File: VU048186.D
 Acq: 21 Apr 2022 20:26

Tgt Ion: 106 Resp: 243294
 Ion Ratio Lower Upper
 106 100
 91 196.2 137.7 255.7

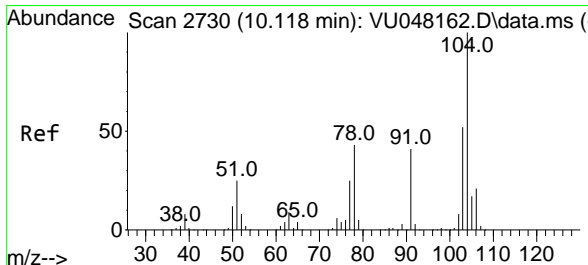
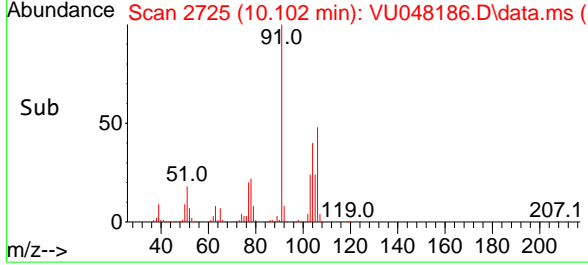
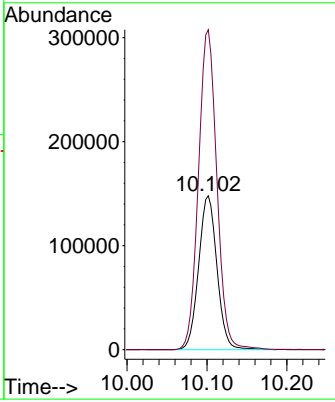
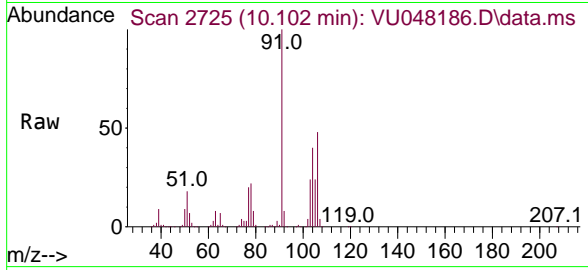




#54
 o-Xylene
 Concen: 52.462 ug/L
 RT: 10.102 min Scan# 21
 Delta R.T. -0.000 min
 Lab File: VU048186.D
 Acq: 21 Apr 2022 20:26

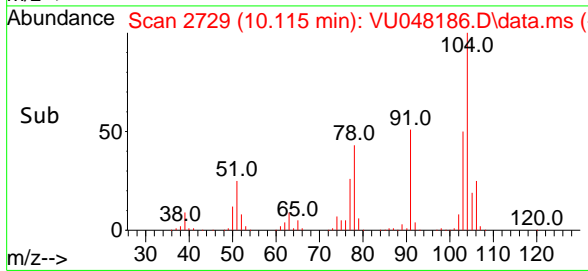
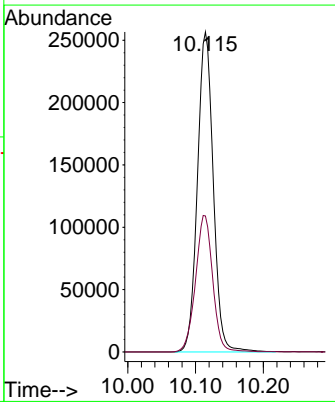
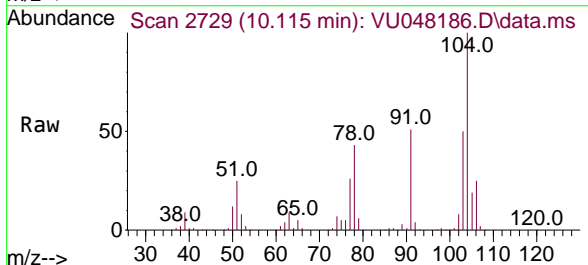
Instrument : MSVOA_U
 ClientSampleId : VSTD050093

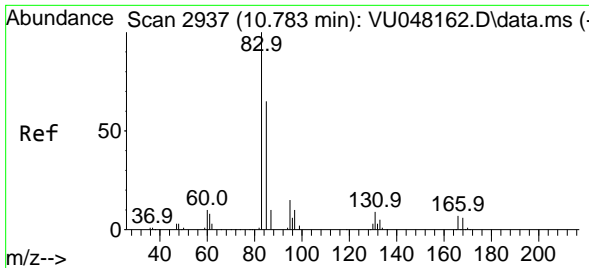
Tgt Ion:106 Resp: 236852
 Ion Ratio Lower Upper
 106 100
 91 207.8 146.7 272.5



#55
 Styrene
 Concen: 53.998 ug/L
 RT: 10.115 min Scan# 2729
 Delta R.T. -0.003 min
 Lab File: VU048186.D
 Acq: 21 Apr 2022 20:26

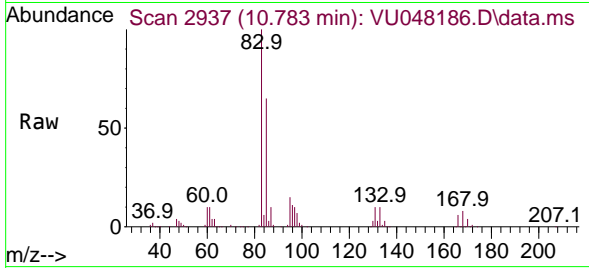
Tgt Ion:104 Resp: 416214
 Ion Ratio Lower Upper
 104 100
 78 42.5 30.4 56.4





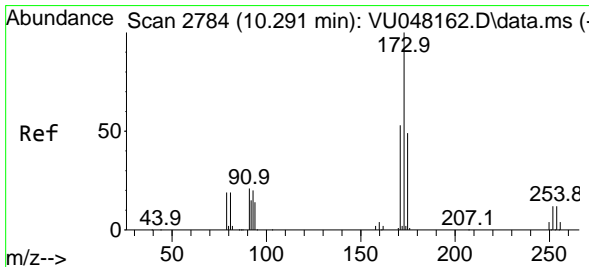
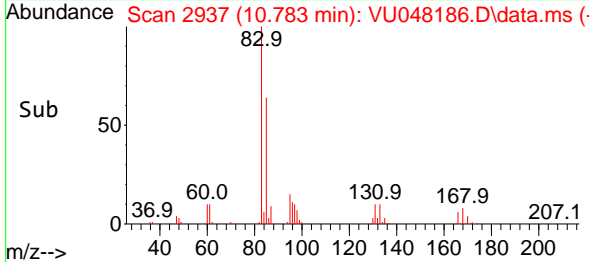
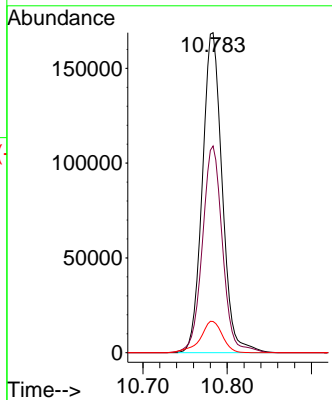
#57
 1,1,2-Tetrachloroethane
 Concen: 53.832 ug/L
 RT: 10.783 min Scan# 2937
 Delta R.T. -0.000 min
 Lab File: VU048186.D
 Acq: 21 Apr 2022 20:26

Instrument : MSVOA_U
 ClientSampleId : VSTD050093



Tgt Ion: 83 Resp: 276482

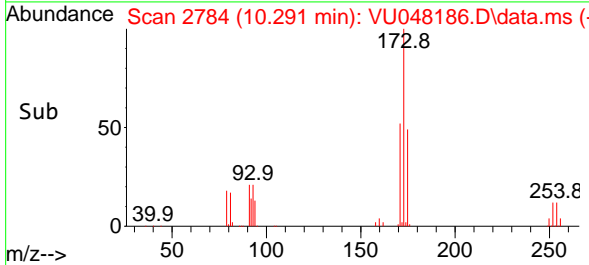
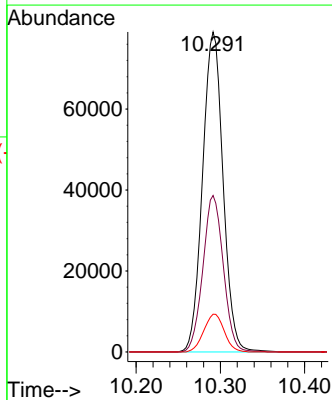
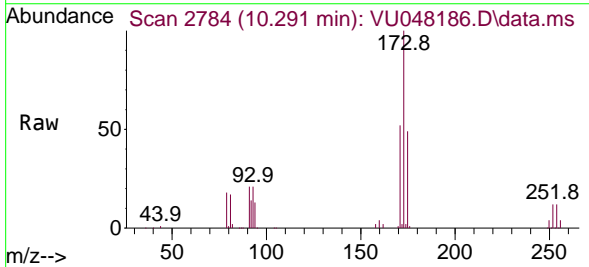
Ion	Ratio	Lower	Upper
83	100		
85	64.6	44.9	83.3
131	9.7	8.6	13.0

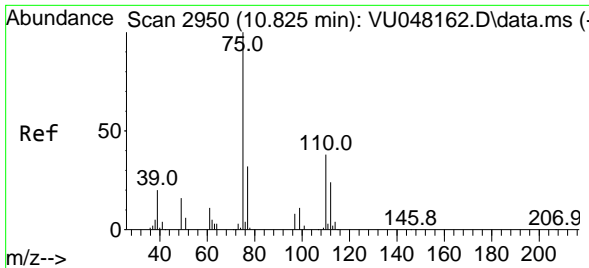


#59
 Bromoform
 Concen: 51.693 ug/L
 RT: 10.291 min Scan# 2784
 Delta R.T. -0.000 min
 Lab File: VU048186.D
 Acq: 21 Apr 2022 20:26

Tgt Ion: 173 Resp: 133976

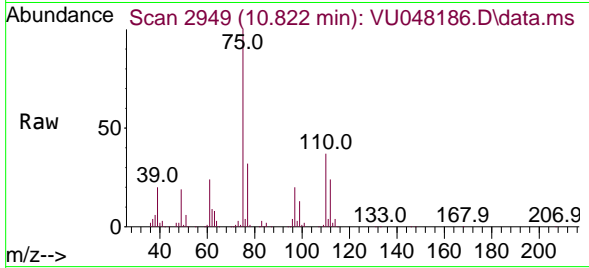
Ion	Ratio	Lower	Upper
173	100		
175	48.7	38.7	58.1
254	11.8	9.6	14.4



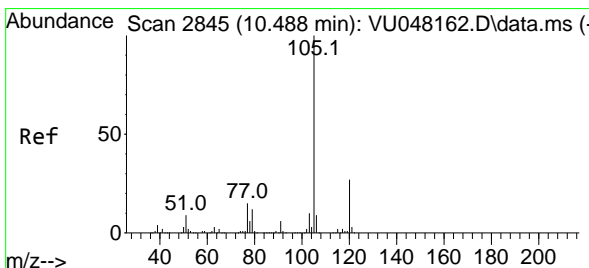
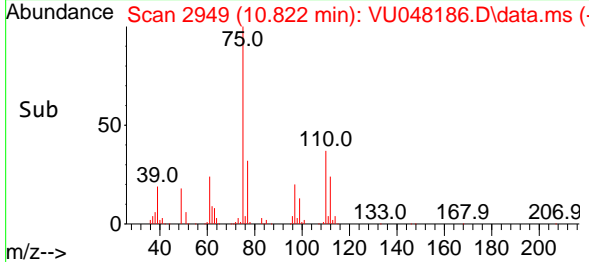
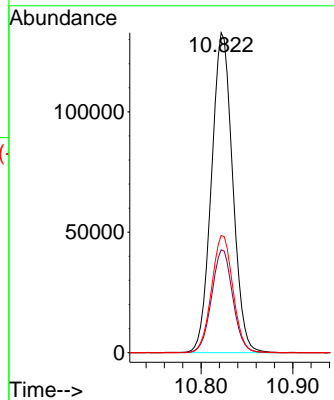


#60
 1,2,3-Trichloropropane
 Concen: 55.824 ug/L
 RT: 10.822 min Scan# 2949
 Delta R.T. -0.003 min
 Lab File: VU048186.D
 Acq: 21 Apr 2022 20:26

Instrument : MSVOA_U
 ClientSampleId : VSTD050093

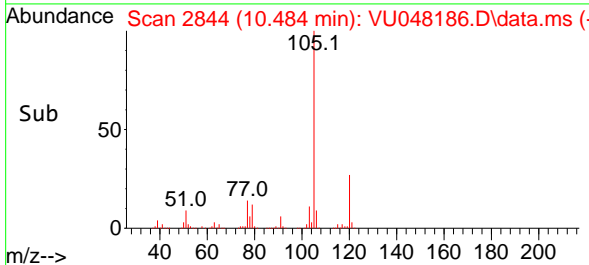
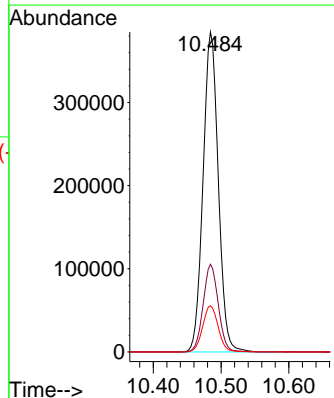
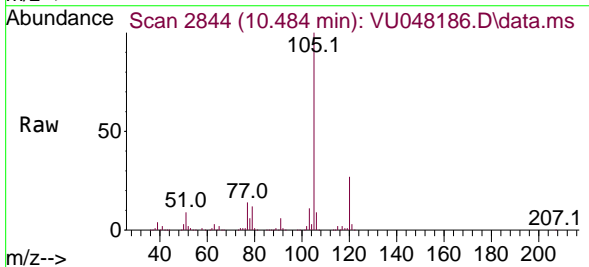


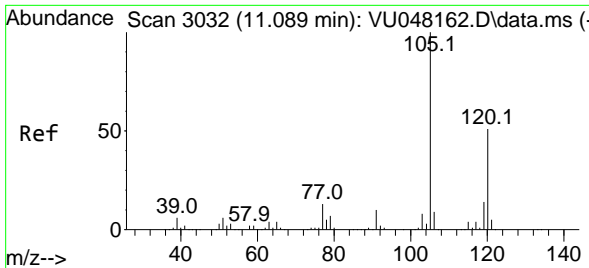
Tgt Ion: 75 Resp: 213296
 Ion Ratio Lower Upper
 75 100
 77 32.2 26.0 39.0
 110 36.9 31.4 47.2



#61
 Isopropylbenzene
 Concen: 54.810 ug/L
 RT: 10.484 min Scan# 2844
 Delta R.T. -0.003 min
 Lab File: VU048186.D
 Acq: 21 Apr 2022 20:26

Tgt Ion: 105 Resp: 600389
 Ion Ratio Lower Upper
 105 100
 120 27.2 21.9 32.9
 77 14.7 12.1 18.1





#62
 1,3,5-Trimethylbenzene
 Concen: 51.529 ug/L
 RT: 11.089 min Scan# 3032
 Delta R.T. -0.000 min
 Lab File: VU048186.D
 Acq: 21 Apr 2022 20:26

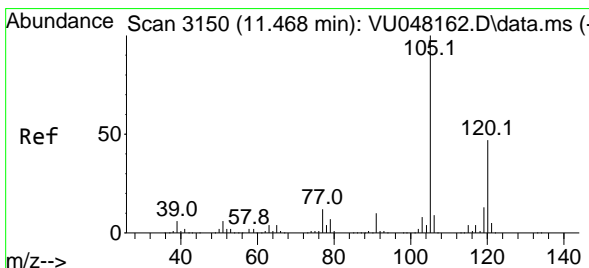
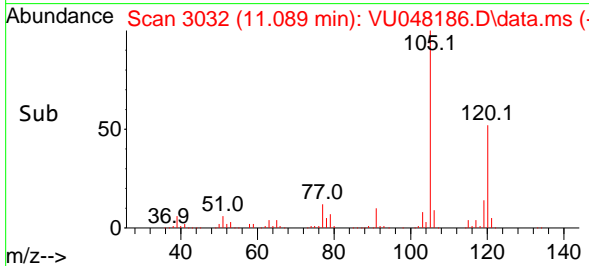
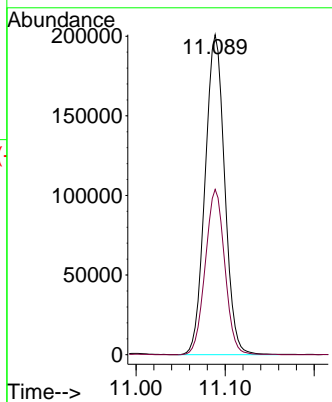
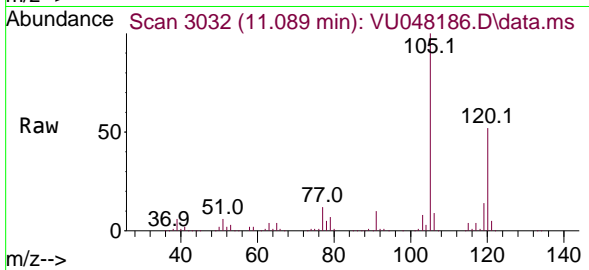
Instrument :

MSVOA_U

ClientSampleId :

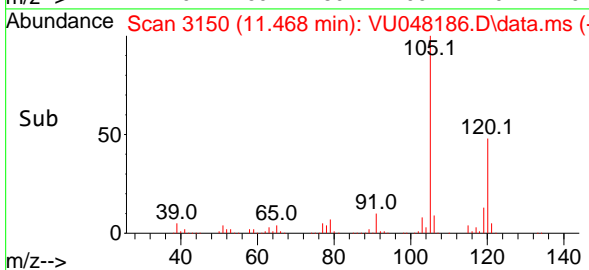
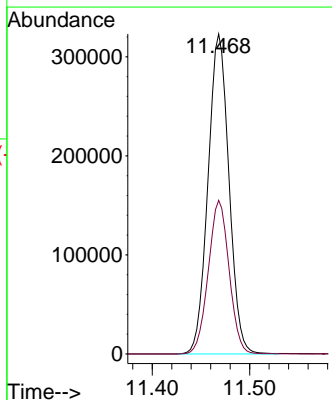
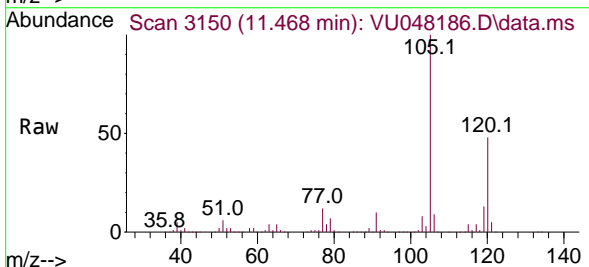
VSTD050093

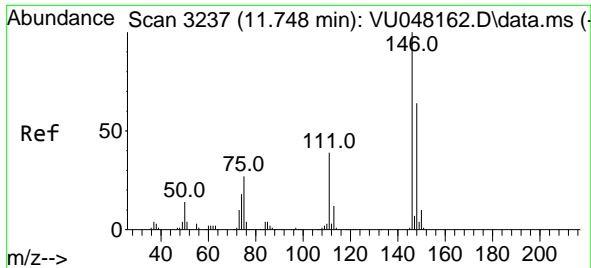
Tgt Ion:105 Resp: 306255
 Ion Ratio Lower Upper
 105 100
 120 51.4 40.8 61.2



#63
 1,2,4-Trimethylbenzene
 Concen: 53.396 ug/L
 RT: 11.468 min Scan# 3150
 Delta R.T. -0.000 min
 Lab File: VU048186.D
 Acq: 21 Apr 2022 20:26

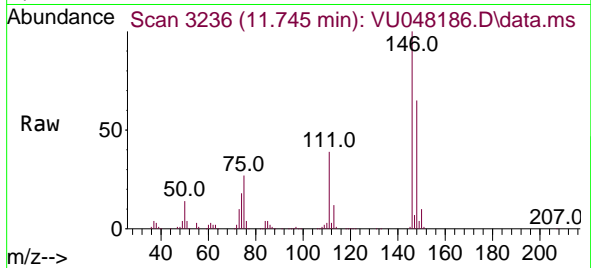
Tgt Ion:105 Resp: 482051
 Ion Ratio Lower Upper
 105 100
 120 47.7 37.6 56.4



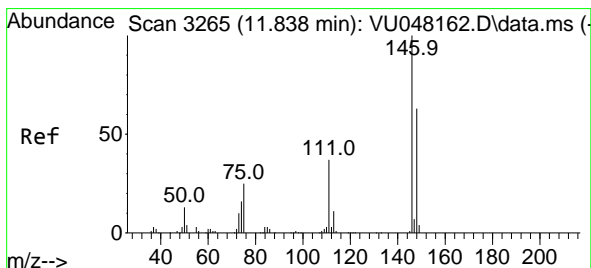
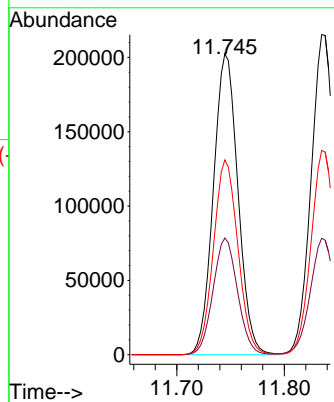
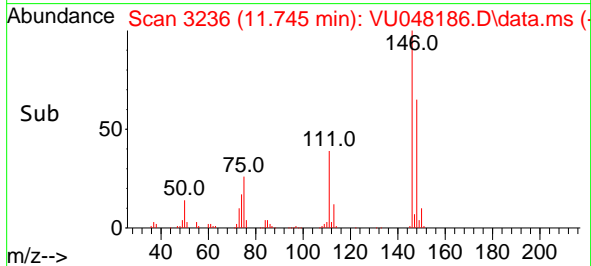


#64
 1,3-Dichlorobenzene
 Concen: 52.833 ug/L
 RT: 11.745 min Scan# 31
 Delta R.T. -0.003 min
 Lab File: VU048186.D
 Acq: 21 Apr 2022 20:26

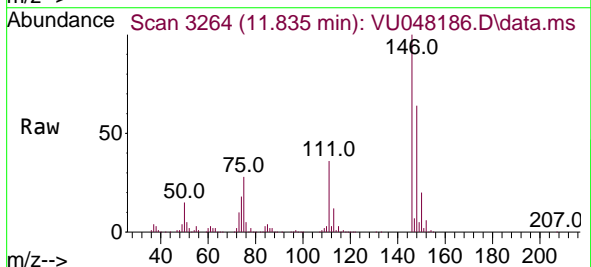
Instrument : MSVOA_U
 ClientSampleId : VSTD050093



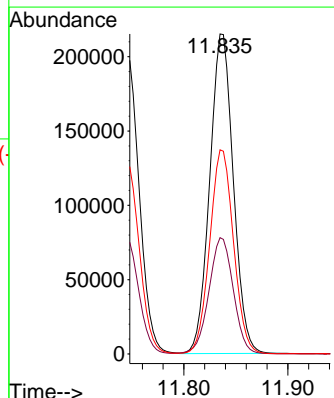
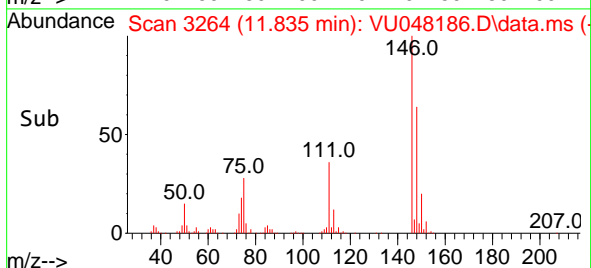
Tgt Ion:146 Resp: 321668
 Ion Ratio Lower Upper
 146 100
 111 38.8 26.7 49.7
 148 64.7 44.4 82.5

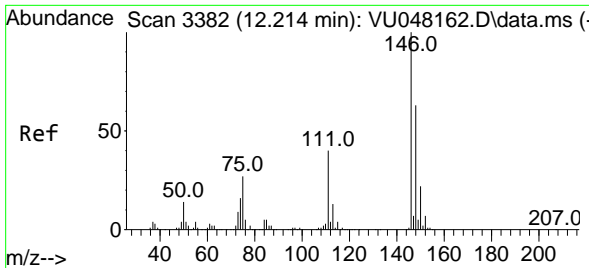


#65
 1,4-Dichlorobenzene
 Concen: 53.707 ug/L
 RT: 11.835 min Scan# 3264
 Delta R.T. -0.003 min
 Lab File: VU048186.D
 Acq: 21 Apr 2022 20:26



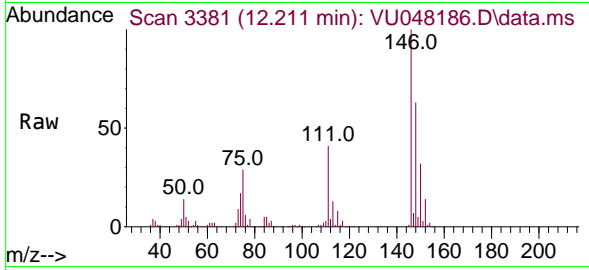
Tgt Ion:146 Resp: 338697
 Ion Ratio Lower Upper
 146 100
 111 36.3 25.3 47.1
 148 63.8 44.5 82.7



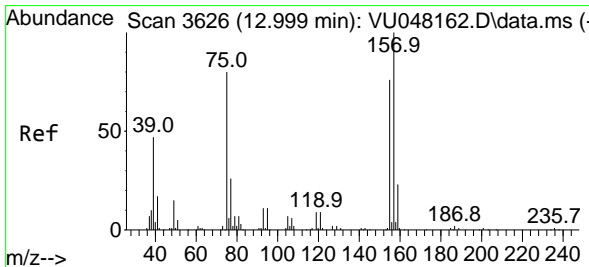
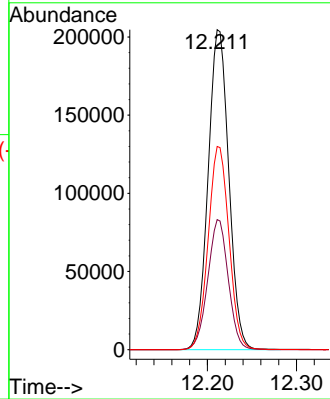
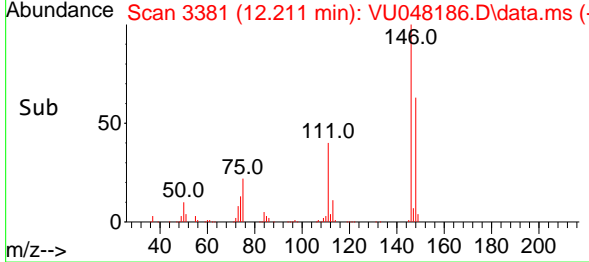


#67
 1,2-Dichlorobenzene
 Concen: 54.052 ug/L
 RT: 12.211 min Scan# 3111
 Delta R.T. -0.003 min
 Lab File: VU048186.D
 Acq: 21 Apr 2022 20:26

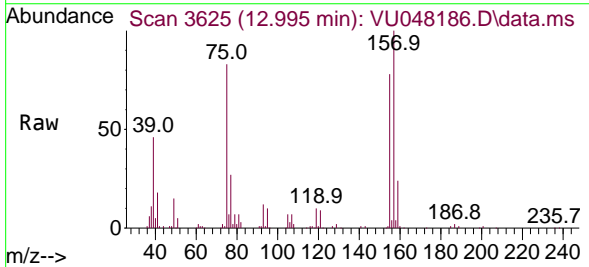
Instrument : MSVOA_U
 ClientSampleId : VSTD050093



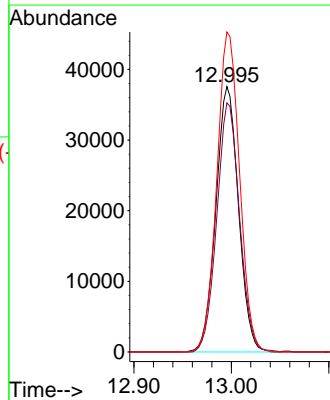
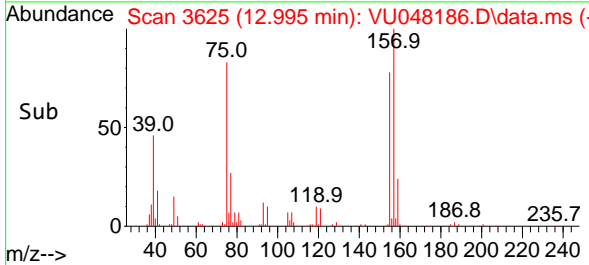
Tgt Ion:146 Resp: 329290
 Ion Ratio Lower Upper
 146 100
 111 40.7 31.7 47.5
 148 63.5 51.4 77.2

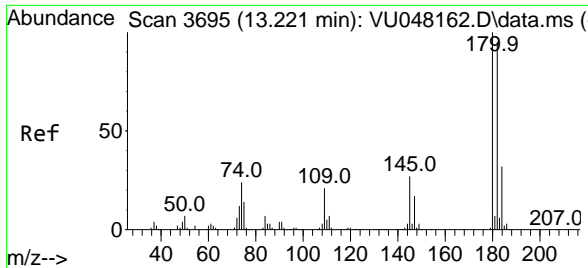


#68
 1,2-Dibromo-3-chloropropane
 Concen: 49.423 ug/L
 RT: 12.995 min Scan# 3625
 Delta R.T. -0.003 min
 Lab File: VU048186.D
 Acq: 21 Apr 2022 20:26



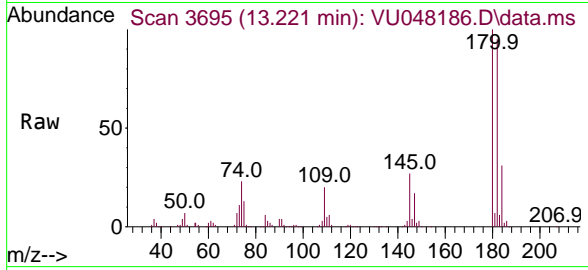
Tgt Ion: 75 Resp: 60490
 Ion Ratio Lower Upper
 75 100
 155 93.8 78.9 118.3
 157 120.5 97.5 146.3





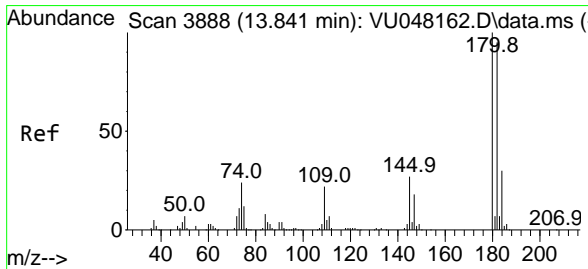
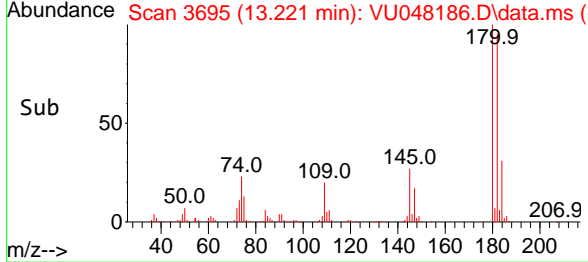
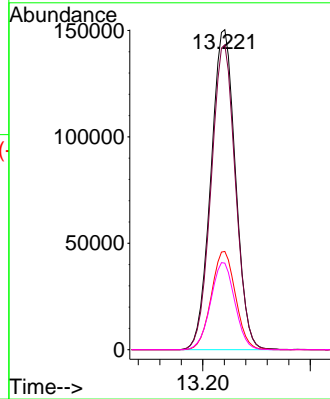
#69
 1,3,5-Trichlorobenzene
 Concen: 48.116 ug/L
 RT: 13.221 min Scan# 30
 Delta R.T. -0.000 min
 Lab File: VU048186.D
 Acq: 21 Apr 2022 20:26

Instrument :
 MSVOA_U
 ClientSampleId :
 VSTD050093



Tgt Ion:180 Resp: 237918

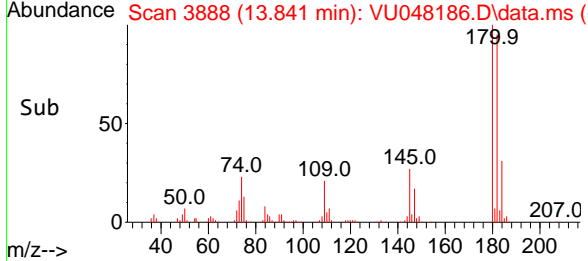
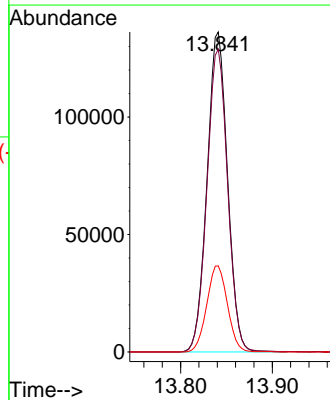
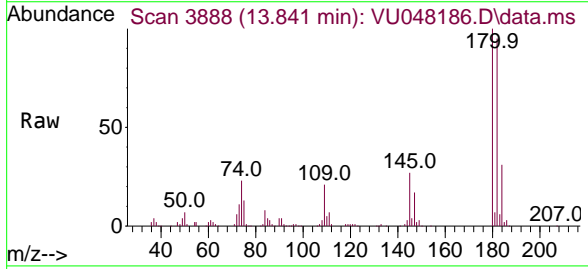
Ion	Ratio	Lower	Upper
180	100		
182	94.4	77.0	115.6
184	30.3	24.5	36.7
145	26.8	21.0	31.6

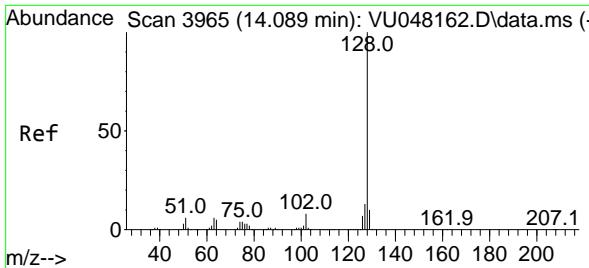


#70
 1,2,4-trichlorobenzene
 Concen: 48.855 ug/L
 RT: 13.841 min Scan# 3888
 Delta R.T. -0.000 min
 Lab File: VU048186.D
 Acq: 21 Apr 2022 20:26

Tgt Ion:180 Resp: 211595

Ion	Ratio	Lower	Upper
180	100		
182	95.4	76.2	114.2
145	27.1	21.8	32.8



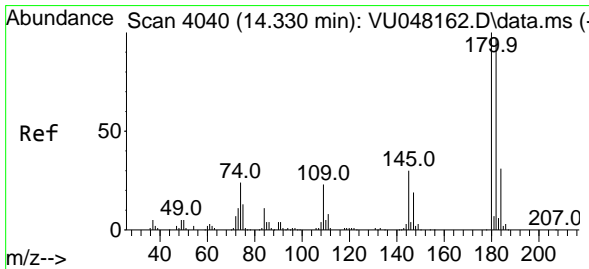
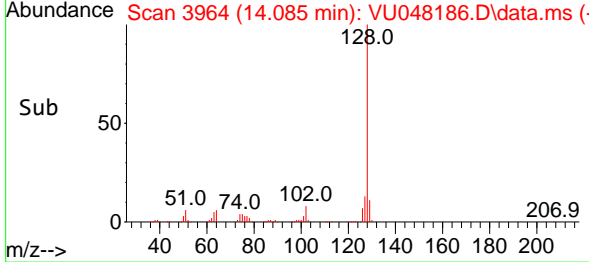
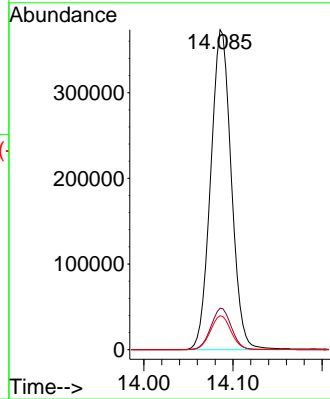
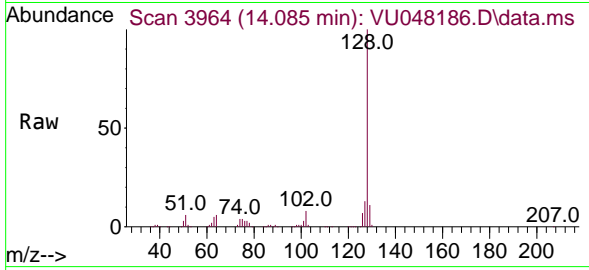


#71
 Naphthalene
 Concen: 46.465 ug/L
 RT: 14.085 min Scan# 3964
 Delta R.T. -0.003 min
 Lab File: VU048186.D
 Acq: 21 Apr 2022 20:26

Instrument : MSVOA_U
 ClientSampleId : VSTD050093

Tgt Ion:128 Resp: 599983

Ion	Ratio	Lower	Upper
128	100		
127	12.9	10.2	15.2
129	10.6	8.8	13.2



#72
 1,2,3-Trichlorobenzene
 Concen: 50.143 ug/L
 RT: 14.330 min Scan# 4040
 Delta R.T. -0.000 min
 Lab File: VU048186.D
 Acq: 21 Apr 2022 20:26

Tgt Ion:180 Resp: 217712

Ion	Ratio	Lower	Upper
180	100		
182	96.6	77.4	116.0
145	29.2	22.8	34.2

