

Data Path : Z:\voasrv\HPCHEM1\MSVOA_U\Data\VU042122\
 Data File : VU048208.D
 Acq On : 22 Apr 2022 06:46
 Operator : SY/MD
 Sample : N2488-10 100X
 Misc : 5.0mL/MSVOA_U/WATER
 ALS Vial : 49 Sample Multiplier: 1

Instrument :
 MSVOA_U
 ClientSampleId :
 COHZ2

Integration Parameters: LSCINT.P

Integrator: RTE
 Smoothing : OFF
 Sampling : 1
 Start Thrs : 0.2
 Stop Thrs : 0

Filtering: 5
 Min Area: 0 % of largest Peak
 Max Peaks: 100
 Peak Location: TOP

If leading or trailing edge < 100 prefer < Baseline drop else tangent >
 Peak separation: 5

Method : Z:\voasrv\HPCHEM1\MSVOA_U\Method\SFAMULM032422WMA.M
 Title : VOC Analysis

Signal : TIC: VU048208.D\data.ms

peak #	R.T. min	first scan	max scan	last scan	PK TY	peak height	corr. area	corr. % max.	% of total
1	1.600	74	81	95	rBV	108820	128508	1.40%	0.438%
2	1.915	171	179	200	rVB	88932	128698	1.41%	0.439%
3	2.568	369	382	397	rBV	186665	308254	3.37%	1.051%
4	2.678	414	416	420	rBV2	255	197	0.00%	0.001%
5	2.764	432	443	453	rBV5	1815	3344	0.04%	0.011%
6	2.954	498	502	503	rBV3	332	219	0.00%	0.001%
7	3.002	512	517	519	rBV4	297	240	0.00%	0.001%
8	3.050	524	532	542	rBV5	2661	4742	0.05%	0.016%
9	3.128	552	556	558	rBV3	388	310	0.00%	0.001%
10	3.189	561	575	596	rVB	58165	131796	1.44%	0.449%
11	3.401	638	641	644	rVB	333	228	0.00%	0.001%
12	3.433	644	651	656	rVB3	342	447	0.00%	0.002%
13	3.468	656	662	664	rBV2	215	242	0.00%	0.001%
14	3.639	712	715	720	rVB3	332	267	0.00%	0.001%
15	3.809	762	768	771	rBV2	238	271	0.00%	0.001%
16	3.928	799	805	808	rBV2	187	256	0.00%	0.001%
17	4.089	852	855	863	rVB	324	448	0.00%	0.002%
18	4.128	863	867	869	rBV2	298	243	0.00%	0.001%
19	4.266	907	910	913	rVV	183	180	0.00%	0.001%
20	4.359	934	939	942	rBV	198	181	0.00%	0.001%
21	4.443	961	965	970	rVB	276	253	0.00%	0.001%
22	4.523	987	990	991	rBV	359	209	0.00%	0.001%
23	4.536	992	994	996	rVB2	438	218	0.00%	0.001%
24	4.620	1006	1020	1062	rBV	140877	353689	3.86%	1.206%
25	5.063	1141	1158	1181	rBV	189681	431666	4.71%	1.471%
26	5.234	1210	1211	1216	rVB	358	233	0.00%	0.001%
27	5.295	1223	1230	1238	rBV3	670	998	0.01%	0.003%
28	5.388	1255	1259	1260	rBV	286	192	0.00%	0.001%
29	5.427	1268	1271	1279	rVB2	303	369	0.00%	0.001%
30	5.488	1286	1290	1291	rVV2	266	193	0.00%	0.001%
31	5.529	1291	1303	1314	rVB3	5071	10461	0.11%	0.036%
32	5.729	1342	1365	1371	rBV2	368168	997688	10.89%	3.401%
33	5.777	1372	1380	1422	rVB	961574	1908970	20.84%	6.507%
34	6.160	1497	1499	1504	rVB3	310	199	0.00%	0.001%
35	6.250	1513	1527	1550	rBV	347463	657643	7.18%	2.242%
36	6.410	1574	1577	1580	rBV2	250	223	0.00%	0.001%

Data Path : Z:\voasrv\HPCHEM1\MSVOA_U\Data\VU042122\
 Data File : VU048208.D
 Acq On : 22 Apr 2022 06:46
 Operator : SY/MD
 Sample : N2488-10 100X
 Misc : 5.0mL/MSVOA_U/WATER
 ALS Vial : 49 Sample Multiplier: 1

Instrument :
 MSVOA_U
 ClientSampleId :
 COHZ2

Integration Parameters: LSCINT.P

Integrator: RTE
 Smoothing : OFF
 Sampling : 1
 Start Thrs : 0.2
 Stop Thrs : 0

Filtering: 5
 Min Area: 0 % of largest Peak
 Max Peaks: 100
 Peak Location: TOP

If leading or trailing edge < 100 prefer < Baseline drop else tangent >
 Peak separation: 5

Method : Z:\voasrv\HPCHEM1\MSVOA_U\Method\SFAMULM032422WMA.M
 Title : VOC Analysis

37	6.491	1598	1602	1605	rBV2	236	191	0.00%	0.001%
38	6.533	1605	1615	1619	rBV5	1272	2102	0.02%	0.007%
39	6.693	1650	1665	1685	rBV	243550	473116	5.17%	1.613%
40	6.854	1713	1715	1719	rVB	352	234	0.00%	0.001%
41	6.873	1719	1721	1725	rBV2	327	264	0.00%	0.001%
42	6.915	1730	1734	1740	rVB2	238	229	0.00%	0.001%
43	7.041	1771	1773	1774	rVV2	455	199	0.00%	0.001%
44	7.054	1774	1777	1785	rVB2	471	561	0.01%	0.002%
45	7.095	1785	1790	1793	rBV	183	191	0.00%	0.001%
46	7.134	1799	1802	1804	rBV2	314	212	0.00%	0.001%
47	7.182	1810	1817	1830	rBV4	2269	4179	0.05%	0.014%
48	7.568	1919	1937	1963	rBV	114689	203808	2.23%	0.695%
49	7.690	1967	1975	1985	rVV5	1643	3032	0.03%	0.010%
50	7.732	1985	1988	1992	rVB2	620	396	0.00%	0.001%
51	7.796	1998	2008	2013	rBV4	875	1235	0.01%	0.004%
52	7.899	2026	2040	2056	rBV	408975	704805	7.69%	2.403%
53	8.044	2082	2085	2088	rVB2	317	201	0.00%	0.001%
54	8.179	2116	2127	2146	rBV	80401	136834	1.49%	0.466%
55	8.542	2234	2240	2242	rBV	459	423	0.00%	0.001%
56	8.632	2255	2268	2307	rBV	354553	674879	7.37%	2.301%
57	8.787	2314	2316	2326	rVB3	983	1050	0.01%	0.004%
58	8.867	2338	2341	2348	rVB3	416	424	0.00%	0.001%
59	8.902	2348	2352	2354	rBV4	419	304	0.00%	0.001%
60	8.938	2360	2363	2367	rVB2	392	271	0.00%	0.001%
61	8.979	2372	2376	2377	rBV	346	200	0.00%	0.001%
62	9.047	2393	2397	2401	rBV2	293	233	0.00%	0.001%
63	9.118	2417	2419	2424	rBV2	419	374	0.00%	0.001%
64	9.224	2449	2452	2456	rBV	299	222	0.00%	0.001%
65	9.446	2499	2521	2568	rBV	5072276	9159333	100.00%	31.222%
66	9.603	2568	2570	2575	rVV5	709	632	0.01%	0.002%
67	9.697	2592	2599	2601	rBV3	614	699	0.01%	0.002%
68	9.780	2621	2625	2630	rBV4	234	274	0.00%	0.001%
69	9.841	2642	2644	2651	rVB3	763	798	0.01%	0.003%
70	9.877	2651	2655	2659	rBV3	662	664	0.01%	0.002%
71	10.095	2721	2723	2727	rVB4	469	286	0.00%	0.001%
72	10.211	2757	2759	2766	rVB2	252	210	0.00%	0.001%
73	10.430	2824	2827	2831	rVB2	384	313	0.00%	0.001%
74	10.504	2846	2850	2853	rBV	239	220	0.00%	0.001%
75	10.632	2886	2890	2895	rBV3	327	309	0.00%	0.001%
76	10.671	2895	2902	2908	rVV4	992	1381	0.02%	0.005%

Data Path : Z:\voasrv\HPCHEM1\MSVOA_U\Data\VU042122\
 Data File : VU048208.D
 Acq On : 22 Apr 2022 06:46
 Operator : SY/MD
 Sample : N2488-10 100X
 Misc : 5.0mL/MSVOA_U/WATER
 ALS Vial : 49 Sample Multiplier: 1

Instrument :
 MSVOA_U
 ClientSampleId :
 C0HZ2

Integration Parameters: LSCINT.P

Integrator: RTE
 Smoothing : OFF Filtering: 5
 Sampling : 1 Min Area: 0 % of largest Peak
 Start Thrs: 0.2 Max Peaks: 100
 Stop Thrs : 0 Peak Location: TOP

If leading or trailing edge < 100 prefer < Baseline drop else tangent >
 Peak separation: 5

Method : Z:\voasrv\HPCHEM1\MSVOA_U\Method\SFAMULM032422WMA.M
 Title : VOC Analysis

77	10.758	2915	2929	2947	rBV	383831	624992	6.82%	2.130%
78	10.973	2993	2996	2999	rBV2	227	213	0.00%	0.001%
79	11.253	3080	3083	3088	rBV2	223	204	0.00%	0.001%
80	11.346	3110	3112	3118	rVB	337	209	0.00%	0.001%
81	11.381	3118	3123	3124	rBV	296	226	0.00%	0.001%
82	11.745	3224	3236	3247	rBV	295983	470933	5.14%	1.605%
83	11.835	3247	3264	3287	rVB2	2738781	5080571	55.47%	17.319%
84	12.211	3362	3381	3399	rBV2	2941359	5263255	57.46%	17.941%
85	12.378	3430	3433	3437	rVB3	720	493	0.01%	0.002%
86	12.481	3462	3465	3466	rBV3	311	199	0.00%	0.001%
87	12.693	3528	3531	3533	rBV	285	208	0.00%	0.001%
88	12.751	3546	3549	3551	rBV2	272	196	0.00%	0.001%
89	12.880	3581	3589	3595	rBV3	413	835	0.01%	0.003%
90	12.973	3611	3618	3627	rVB3	4780	7609	0.08%	0.026%
91	13.153	3668	3674	3684	rVB5	1386	2240	0.02%	0.008%
92	13.208	3688	3691	3692	rBV2	733	415	0.00%	0.001%
93	13.282	3710	3714	3717	rBV	672	600	0.01%	0.002%
94	13.333	3722	3730	3738	rVB6	2720	4047	0.04%	0.014%
95	13.574	3802	3805	3812	rVB4	693	687	0.01%	0.002%
96	13.610	3813	3816	3820	rBV2	373	313	0.00%	0.001%
97	13.841	3875	3888	3908	rBV	709788	1118921	12.22%	3.814%
98	14.330	4028	4040	4055	rBV	192458	310176	3.39%	1.057%
99	14.973	4237	4240	4243	rBV2	544	431	0.00%	0.001%
100	15.150	4293	4295	4298	rBV4	594	427	0.00%	0.001%

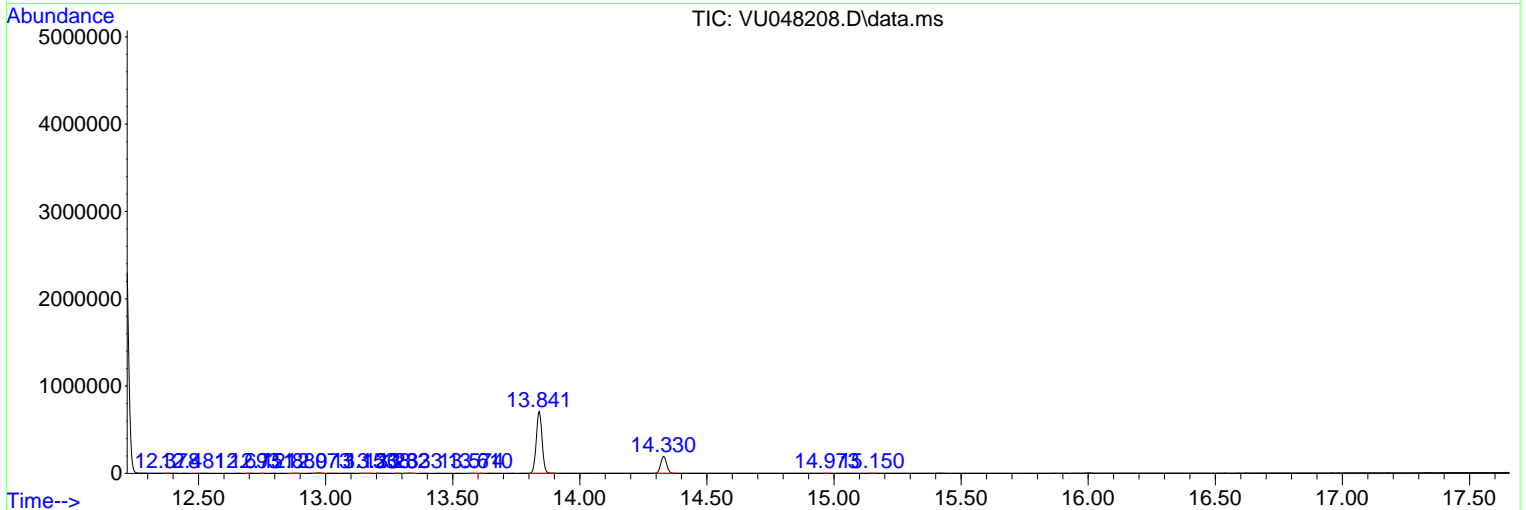
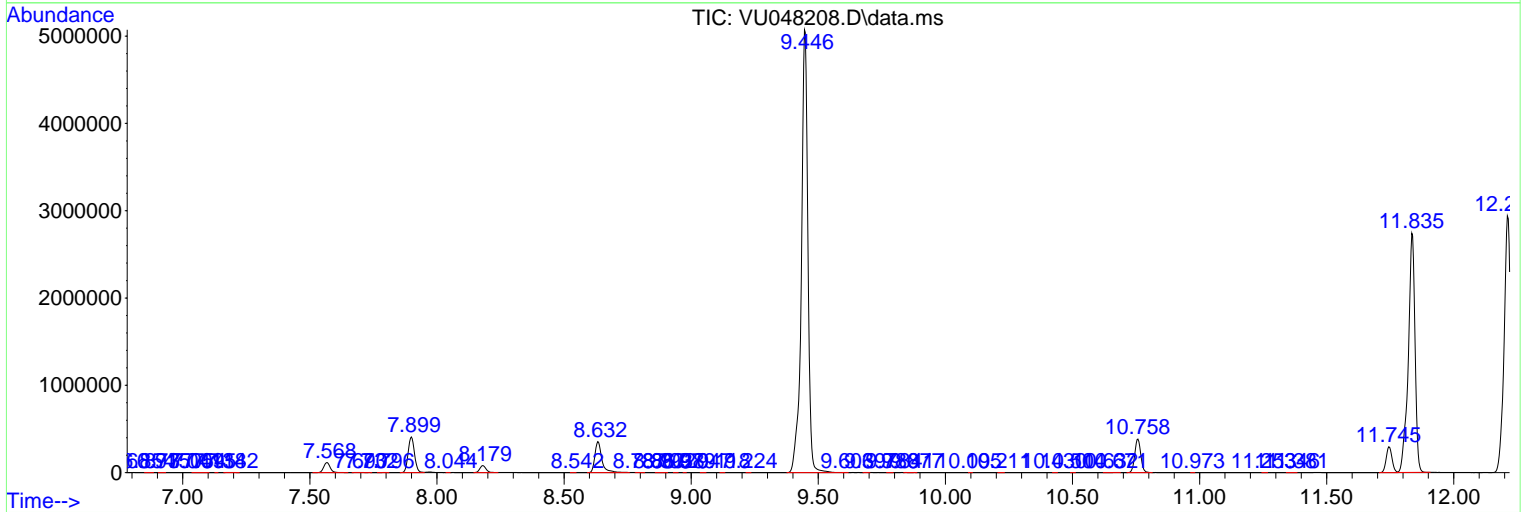
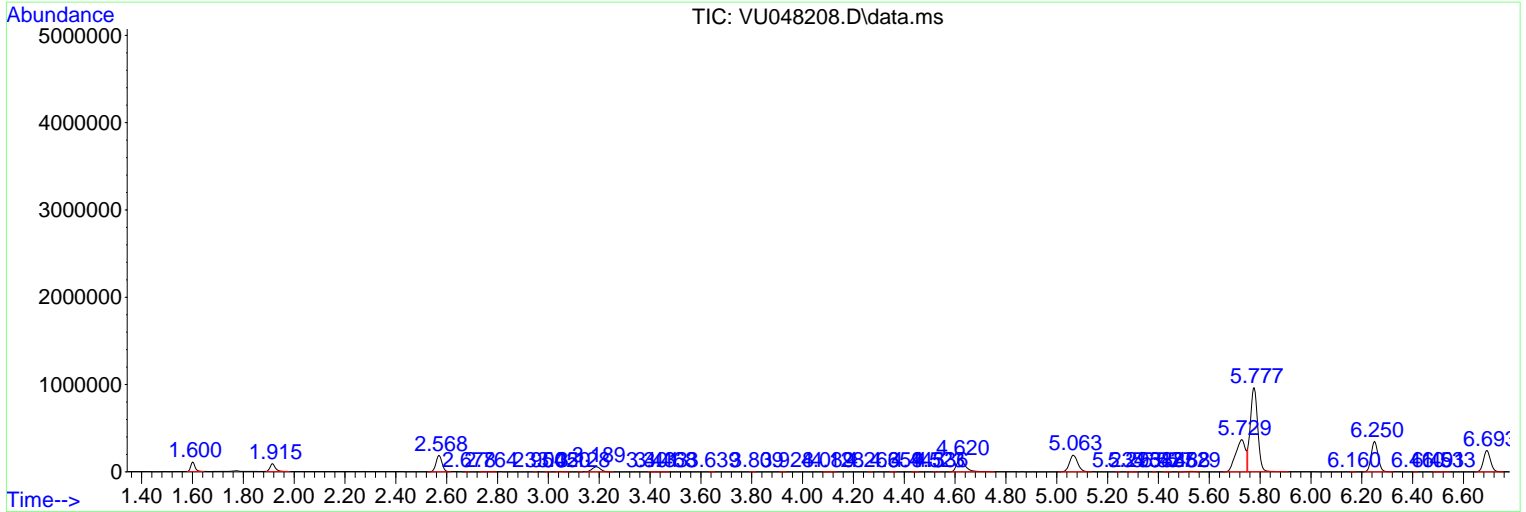
Sum of corrected areas: 29335963

Data Path : Z:\voasrv\HPCHEM1\MSVOA_U\Data\VU042122\
 Data File : VU048208.D
 Acq On : 22 Apr 2022 06:46
 Operator : SY/MD
 Sample : N2488-10 100X
 Misc : 5.0mL/MSVOA_U/WATER
 ALS Vial : 49 Sample Multiplier: 1

Instrument :
 MSVOA_U
 ClientSampleId :
 COHZ2

Quant Method : Z:\voasrv\HPCHEM1\MSVOA_U\Method\SFAMULM032422WMA.M
 Quant Title : VOC Analysis

TIC Library : C:\Database\NIST20.L
 TIC Integration Parameters: LSCINT.P



Library Search Compound Report

Data Path : Z:\voasrv\HPCHEM1\MSVOA_U\Data\VU042122\
Data File : VU048208.D
Acq On : 22 Apr 2022 06:46
Operator : SY/MD
Sample : N2488-10 100X
Misc : 5.0mL/MSVOA_U/WATER
ALS Vial : 49 Sample Multiplier: 1

Instrument :
MSVOA_U
ClientSampleId :
C0HZ2

Quant Method : Z:\voasrv\HPCHEM1\MSVOA_U\Method\SFAMULM032422WMA.M
Quant Title : VOC Analysis

TIC Library : C:\Database\NIST20.L
TIC Integration Parameters: LSCINT.P

No Library Search Compounds Detected

Data Path : Z:\voasrv\HPCHEM1\MSVOA_U\Data\VU042122\
Data File : VU048208.D
Acq On : 22 Apr 2022 06:46
Operator : SY/MD
Sample : N2488-10 100X
Misc : 5.0mL/MSVOA_U/WATER
ALS Vial : 49 Sample Multiplier: 1

Instrument :
MSVOA_U
ClientSampleId :
C0HZ2

Quant Method : Z:\voasrv\HPCHEM1\MSVOA_U\Method\SFAMULM032422WMA.M
Quant Title : VOC Analysis

TIC Library : C:\Database\NIST0.L
TIC Integration Parameters: LSCINT.P

TIC Top Hit name	RT	EstConc	Units	Response	--Internal Standard--			
					#	RT	Resp	Conc
