

Data Path : Z:\voasrv\HPCHEM1\MSVOA_U\Data\VU042321\
 Data File : VU043312.D
 Acq On : 23 Apr 2021 23:57
 Operator : SY/MD
 Sample : M2124-08
 Misc : 25.0mL/MSVOA_U/WATER
 ALS Vial : 29 Sample Multiplier: 1

Instrument :
 MSVOA_U
 ClientSampled :

Quant Time: Apr 26 08:37:24 2021
 Quant Method : Z:\voasrv\HPCHEM1\MSVOA_U\Method\SFAMUTR041521WMA.M
 Quant Title : TRACE VOA SFAM1.0
 QLast Update : Sat Apr 24 07:55:52 2021
 Response via : Initial Calibration

Compound	R.T.	QIon	Response	Conc	Units	Dev(Min)

Internal Standards						
1) 1,4-Difluorobenzene	6.256	114	99637	5.00	ug/L	# 0.00
28) Chlorobenzene-d5	9.423	117	99441	5.00	ug/L	0.00
58) 1,4-Dichlorobenzene-d4	11.819	152	45004	5.00	ug/L	0.00
System Monitoring Compounds						
4) Vinyl Chloride-d3	1.604	65	22691	4.48	ug/L	0.00
Spiked Amount	5.000	Range 40 - 130	Recovery	=	89.60%	
7) Chloroethane-d5	1.919	69	21097	4.42	ug/L	0.00
Spiked Amount	5.000	Range 65 - 130	Recovery	=	88.40%	
11) 1,1-Dichloroethene-d2	2.572	65	15455	5.27	ug/L	0.00
Spiked Amount	5.000	Range 60 - 125	Recovery	=	105.40%	
20) 2-Butanone-d5	4.649	46	121949	54.88	ug/L	-0.01
Spiked Amount	50.000	Range 40 - 130	Recovery	=	109.76%	
24) Chloroform-d	5.073	84	63364	4.92	ug/L	0.00
Spiked Amount	5.000	Range 70 - 125	Recovery	=	98.40%	
26) 1,2-Dichloroethane-d4	5.713	65	41436	4.76	ug/L	0.00
Spiked Amount	5.000	Range 70 - 130	Recovery	=	95.20%	
32) Benzene-d6	5.735	84	112977	4.88	ug/L	0.00
Spiked Amount	5.000	Range 70 - 125	Recovery	=	97.60%	
36) 1,2-Dichloropropane-d6	6.700	67	39476	5.14	ug/L	0.00
Spiked Amount	5.000	Range 60 - 140	Recovery	=	102.80%	
41) Toluene-d8	7.906	98	95355	3.96	ug/L	0.00
Spiked Amount	5.000	Range 70 - 130	Recovery	=	79.20%	
43) trans-1,3-Dichloroprop...	8.185	79	14283	4.21	ug/L	0.00
Spiked Amount	5.000	Range 55 - 130	Recovery	=	84.20%	
46) 2-Hexanone-d5	8.642	63	72909	43.11	ug/L	0.00
Spiked Amount	50.000	Range 45 - 130	Recovery	=	86.22%	
56) 1,1,2,2-Tetrachloroeth...	10.761	84	32232	4.77	ug/L	0.00
Spiked Amount	5.000	Range 65 - 120	Recovery	=	95.40%	
66) 1,2-Dichlorobenzene-d4	12.198	152	37302	4.84	ug/L	0.00
Spiked Amount	5.000	Range 80 - 120	Recovery	=	96.80%	

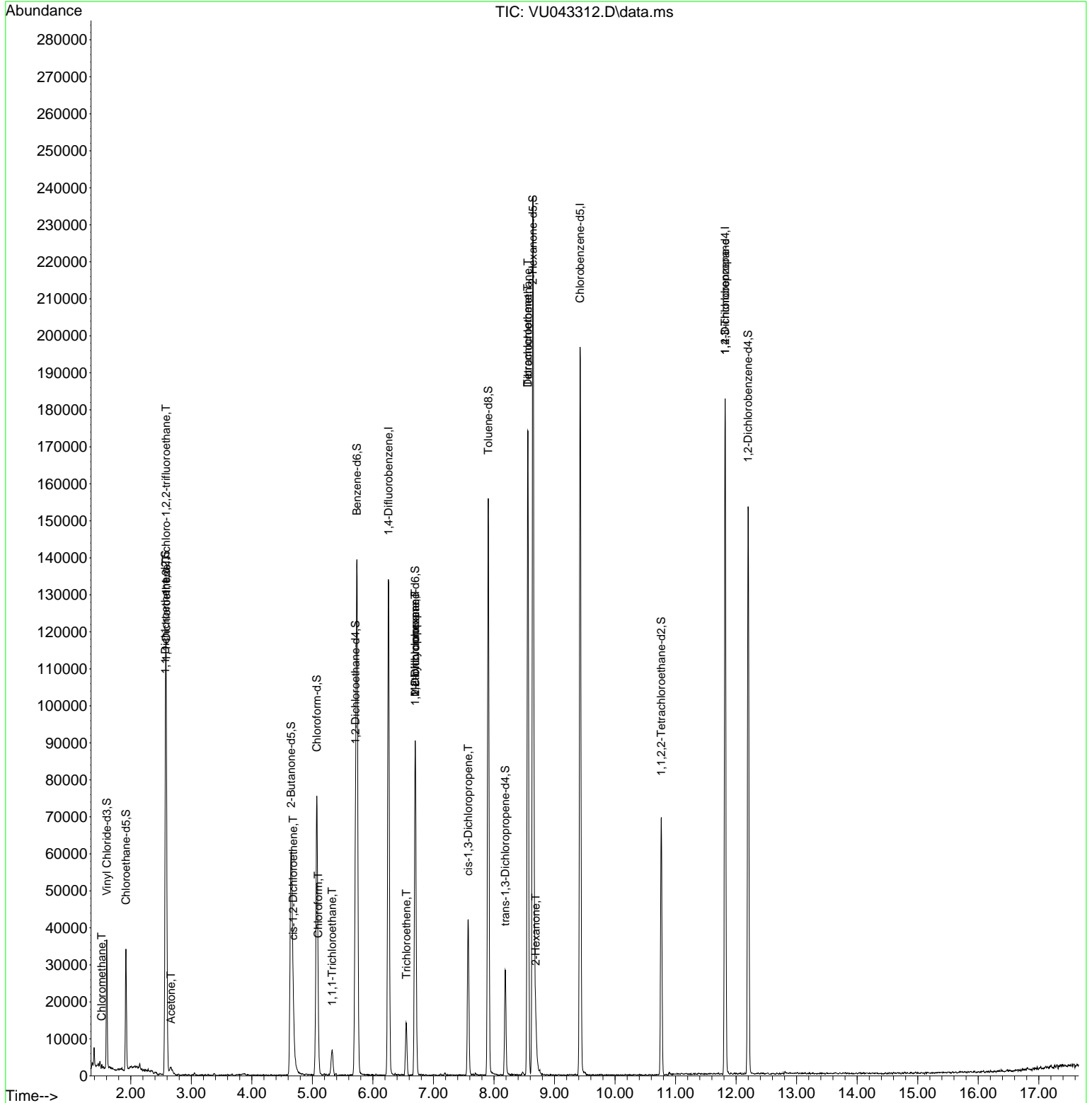
Target Compounds						Qvalue
3) Chloromethane	1.520	50	692	0.11	ug/L	# 80
10) 1,1,2-Trichloro-1,2,2-...	2.581	101	1641	0.25	ug/L	# 77
12) 1,1-Dichloroethene	2.588	96	18527	3.35	ug/L	# 58
13) Acetone	2.665	43	3647	2.23	ug/L	87
22) cis-1,2-Dichloroethene	4.684	96	1413	0.20	ug/L	80
25) Chloroform	5.096	83	2618	0.19	ug/L	96
29) 1,1,1-Trichloroethane	5.327	97	5120	0.42	ug/L	95
34) Trichloroethene	6.552	95	4363	0.60	ug/L	93
35) Methylcyclohexane	6.700	83	8468	0.84	ug/L	# 21
37) 1,2-Dichloropropane	6.697	63	4615	0.62	ug/L	# 87
39) cis-1,3-Dichloropropene	7.575	75	1135	0.10	ug/L	# 49
47) Tetrachloroethene	8.558	164	37739	6.50	ug/L	96
48) 2-Hexanone	8.690	43	5906	1.20	ug/L	# 79
49) Dibromochloromethane	8.562	129	34272	4.86	ug/L	# 9
61) 1,2,3-Trichloropropane	11.819	75	5882	1.26	ug/L	# 62

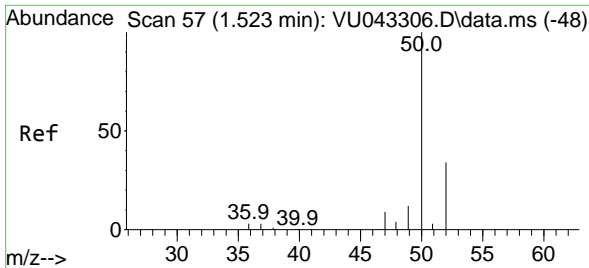
(#) = qualifier out of range (m) = manual integration (+) = signals summed

Data Path : Z:\voasrv\HPCHEM1\MSVOA_U\Data\VU042321\
 Data File : VU043312.D
 Acq On : 23 Apr 2021 23:57
 Operator : SY/MD
 Sample : M2124-08
 Misc : 25.0mL/MSVOA_U/WATER
 ALS Vial : 29 Sample Multiplier: 1

Instrument :
 MSVOA_U
 ClientSampleId :

Quant Time: Apr 26 08:37:24 2021
 Quant Method : Z:\voasrv\HPCHEM1\MSVOA_U\Method\SFAMUTR041521WMA.M
 Quant Title : TRACE VOA SFAM1.0
 QLast Update : Sat Apr 24 07:55:52 2021
 Response via : Initial Calibration

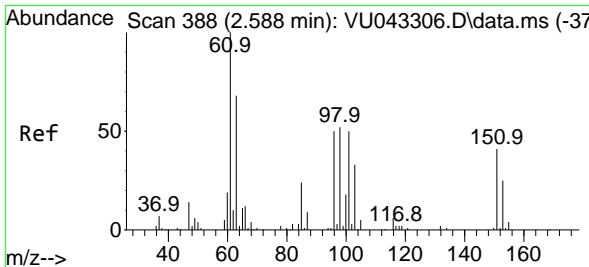
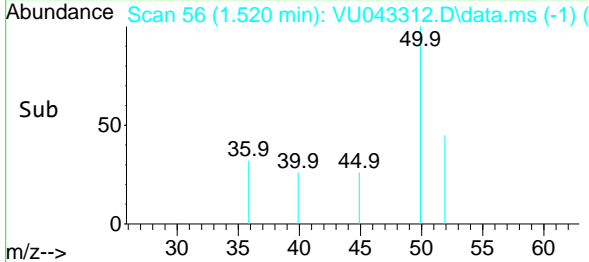
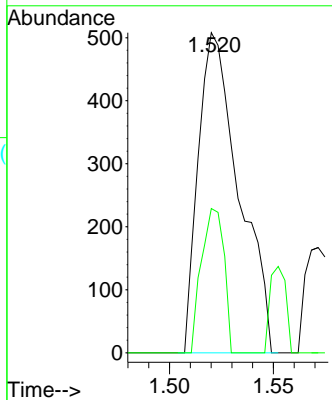
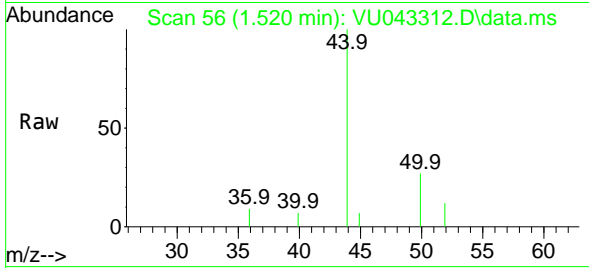




#3
 Chloromethane
 Concen: 0.11 ug/L
 RT: 1.520 min Scan# 56
 Delta R.T. -0.003 min
 Lab File: VU043312.D
 Acq: 23 Apr 2021 23:57

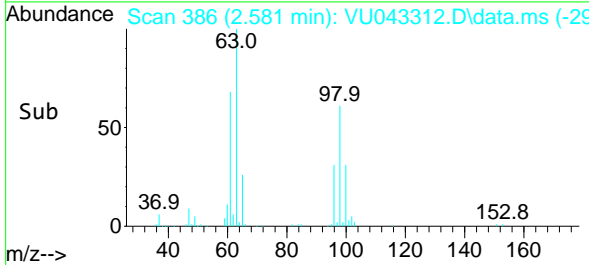
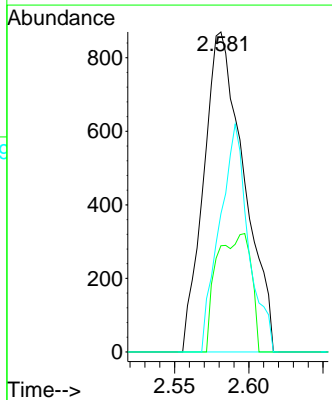
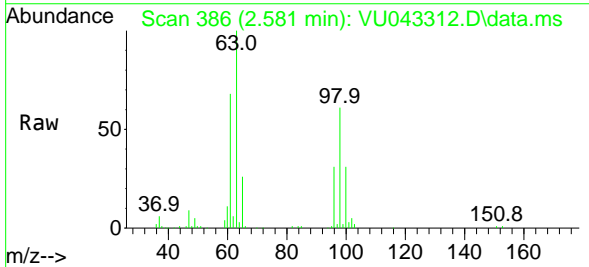
Instrument :
 MSVOA_U
 ClientSampled :

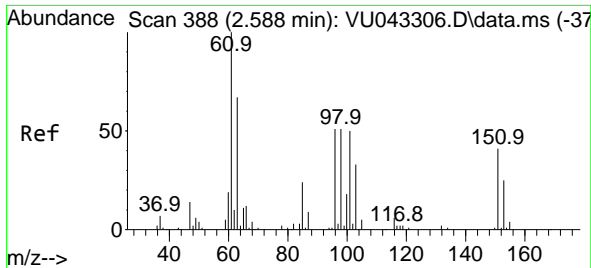
Tgt Ion: 50 Resp: 692
 Ion Ratio Lower Upper
 50 100
 52 45.1 23.6 43.8#



#10
 1,1,2-Trichloro-1,2,2-trifluoroethane
 Concen: 0.25 ug/L
 RT: 2.581 min Scan# 386
 Delta R.T. -0.006 min
 Lab File: VU043312.D
 Acq: 23 Apr 2021 23:57

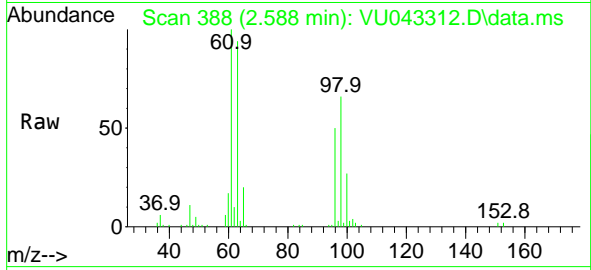
Tgt Ion:101 Resp: 1641
 Ion Ratio Lower Upper
 101 100
 85 31.3 34.5 51.7#
 151 50.9 57.4 86.2#



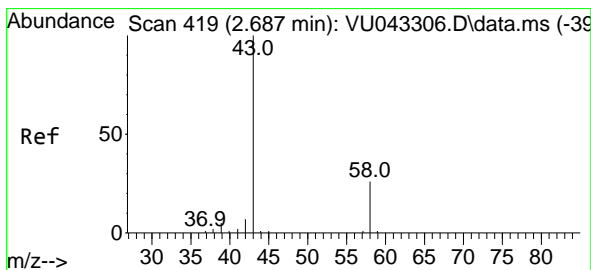
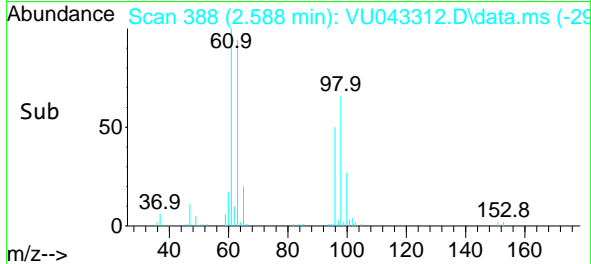
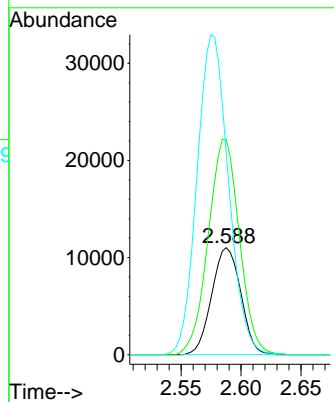


#12
 1,1-Dichloroethene
 Concen: 3.35 ug/L
 RT: 2.588 min Scan# 388
 Delta R.T. -0.000 min
 Lab File: VU043312.D
 Acq: 23 Apr 2021 23:57

Instrument : MSVOA_U
 ClientSampled :

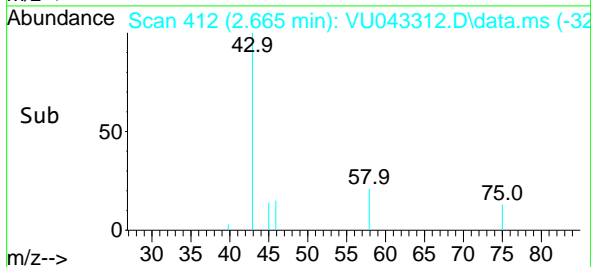
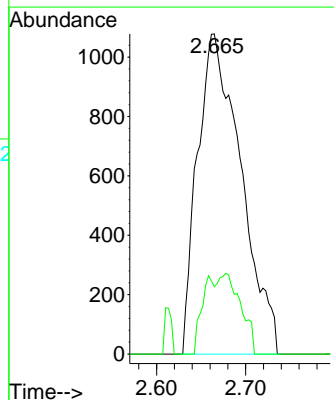
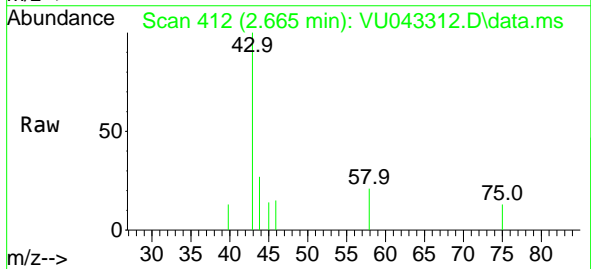


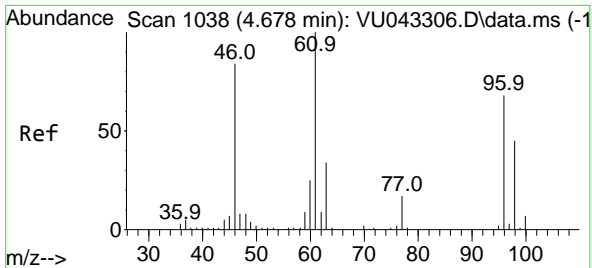
Tgt Ion: 96 Resp: 18527
 Ion Ratio Lower Upper
 96 100
 61 201.4 115.1 213.7
 63 189.9 84.1 156.1#



#13
 Acetone
 Concen: 2.23 ug/L
 RT: 2.665 min Scan# 412
 Delta R.T. -0.023 min
 Lab File: VU043312.D
 Acq: 23 Apr 2021 23:57

Tgt Ion: 43 Resp: 3647
 Ion Ratio Lower Upper
 43 100
 58 7.3 0.0 25.0



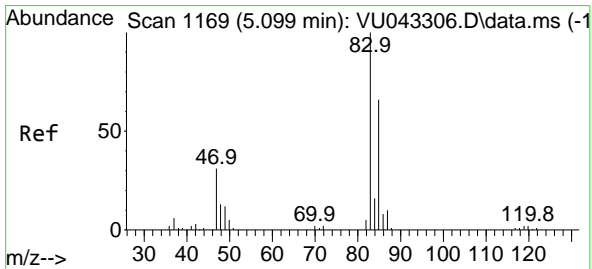
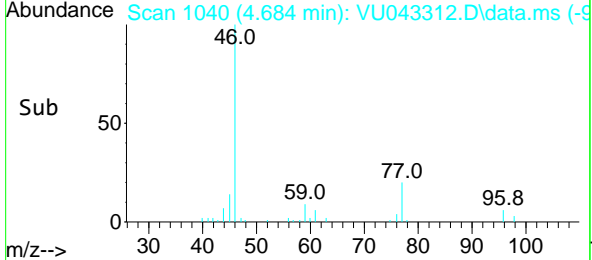
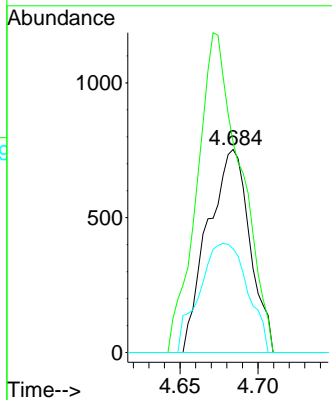
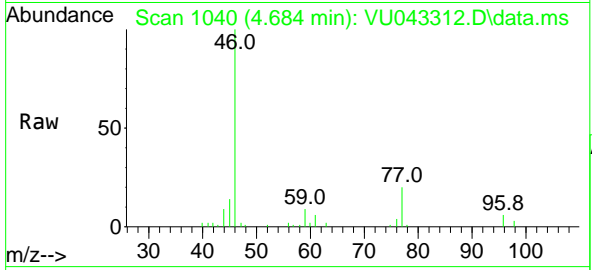


#22
 cis-1,2-Dichloroethene
 Concen: 0.20 ug/L
 RT: 4.684 min Scan# 1040
 Delta R.T. 0.006 min
 Lab File: VU043312.D
 Acq: 23 Apr 2021 23:57

Instrument :
 MSVOA_U
 ClientSampled :

Tgt Ion: 96 Resp: 1413

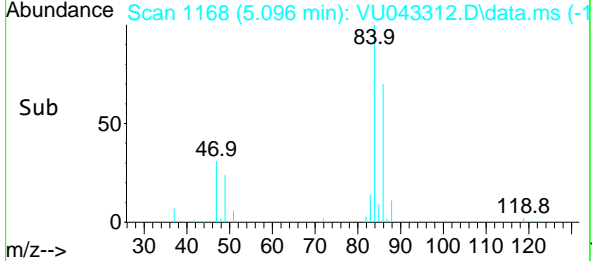
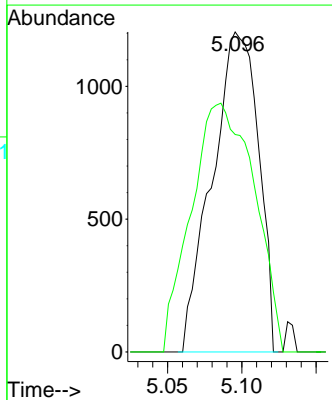
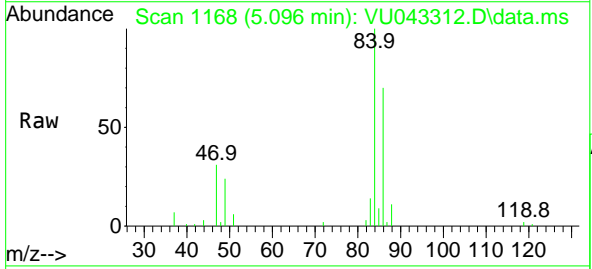
Ion	Ratio	Lower	Upper
96	100		
61	103.6	87.4	162.4
98	51.1	47.7	88.5

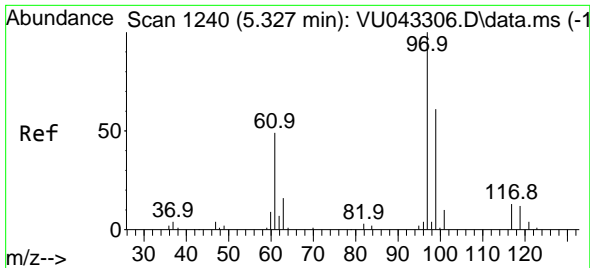


#25
 Chloroform
 Concen: 0.19 ug/L
 RT: 5.096 min Scan# 1168
 Delta R.T. -0.003 min
 Lab File: VU043312.D
 Acq: 23 Apr 2021 23:57

Tgt Ion: 83 Resp: 2618

Ion	Ratio	Lower	Upper
83	100		
85	68.0	45.6	84.8



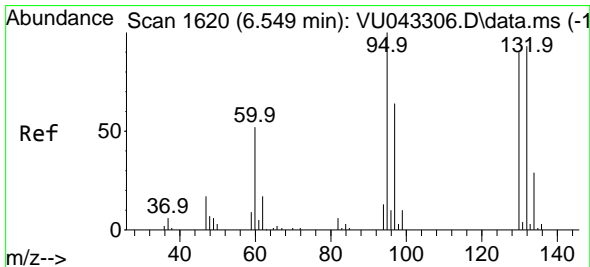
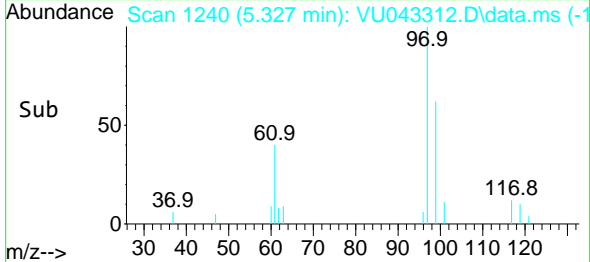
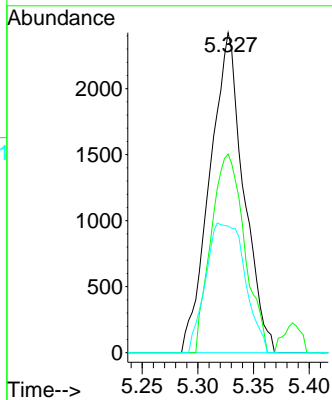
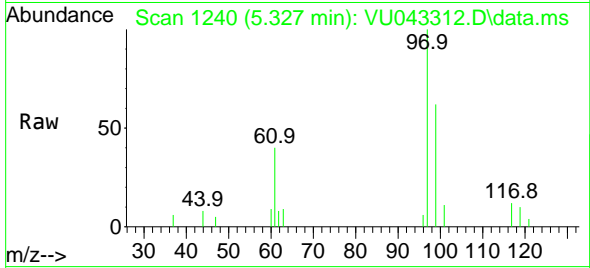


#29
 1,1,1-Trichloroethane
 Concen: 0.42 ug/L
 RT: 5.327 min Scan# 1240
 Delta R.T. -0.000 min
 Lab File: VU043312.D
 Acq: 23 Apr 2021 23:57

Instrument :
 MSVOA_U
 ClientSampled :

Tgt Ion: 97 Resp: 5120

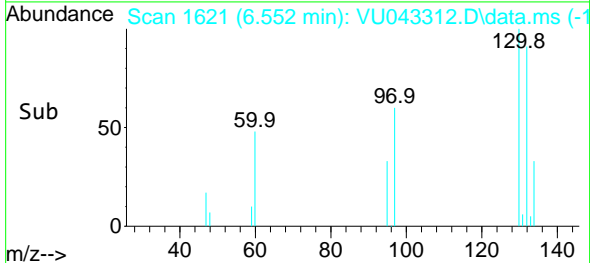
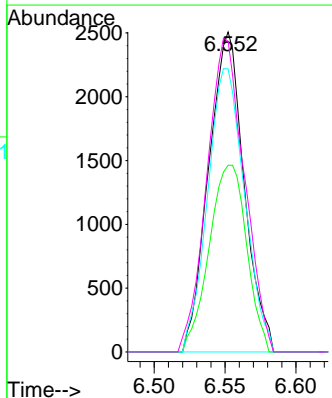
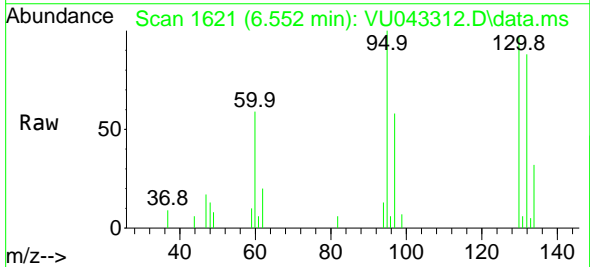
Ion	Ratio	Lower	Upper
97	100		
99	61.3	50.3	75.5
61	46.9	32.7	49.1

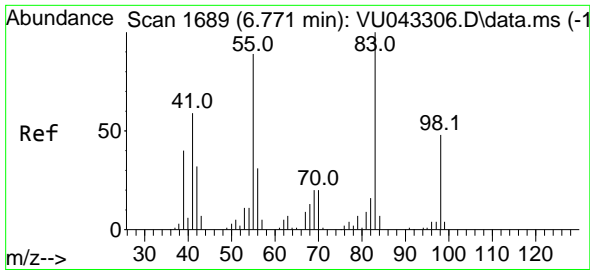


#34
 Trichloroethene
 Concen: 0.60 ug/L
 RT: 6.552 min Scan# 1621
 Delta R.T. 0.003 min
 Lab File: VU043312.D
 Acq: 23 Apr 2021 23:57

Tgt Ion: 95 Resp: 4363

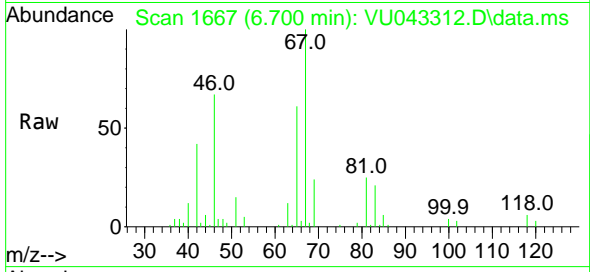
Ion	Ratio	Lower	Upper
95	100		
97	58.4	45.8	85.2
132	88.4	68.7	127.7
130	97.1	70.1	130.3



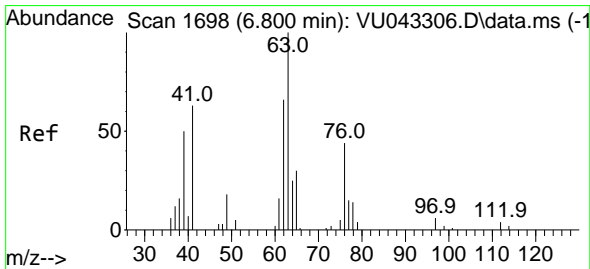
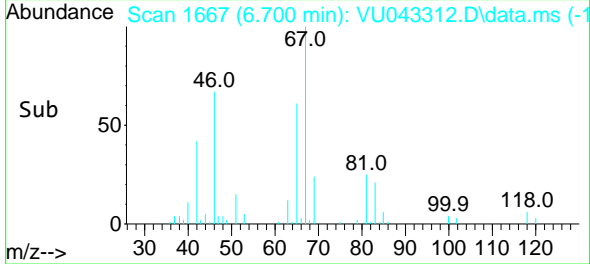
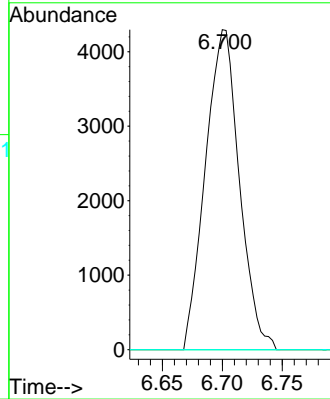


#35
 Methylcyclohexane
 Concen: 0.84 ug/L
 RT: 6.700 min Scan# 1667
 Delta R.T. -0.071 min
 Lab File: VU043312.D
 Acq: 23 Apr 2021 23:57

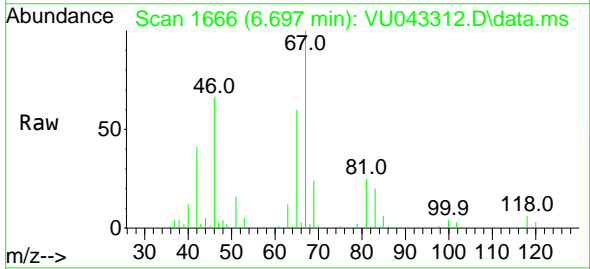
Instrument :
 MSVOA_U
 ClientSampled :



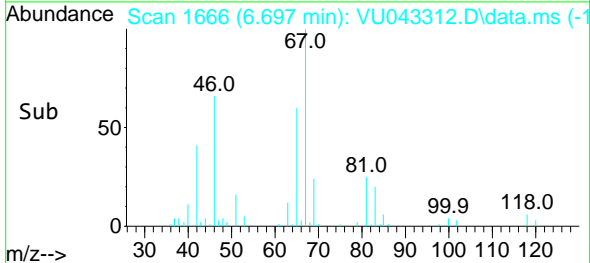
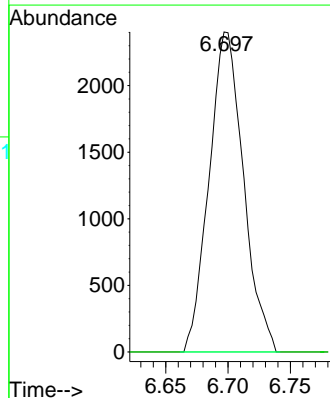
Tgt Ion	Resp	Lower	Upper
83	100		
55	0.0	59.5	89.3#
98	3.2	37.9	56.9#

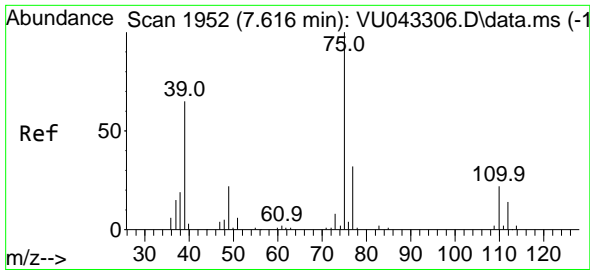


#37
 1,2-Dichloropropane
 Concen: 0.62 ug/L
 RT: 6.697 min Scan# 1666
 Delta R.T. -0.103 min
 Lab File: VU043312.D
 Acq: 23 Apr 2021 23:57



Tgt Ion	Resp	Lower	Upper
63	100		
112	0.0	3.5	5.3#

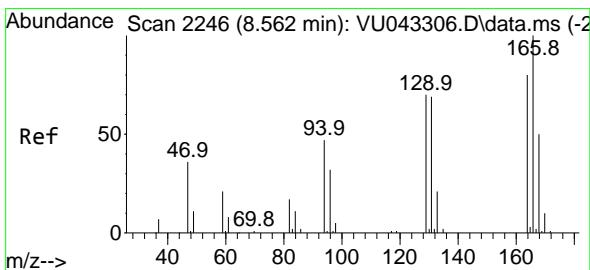
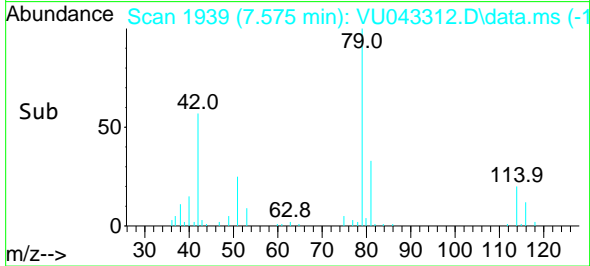
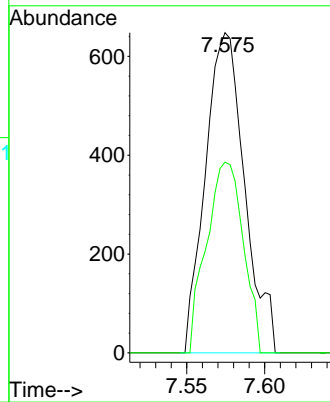
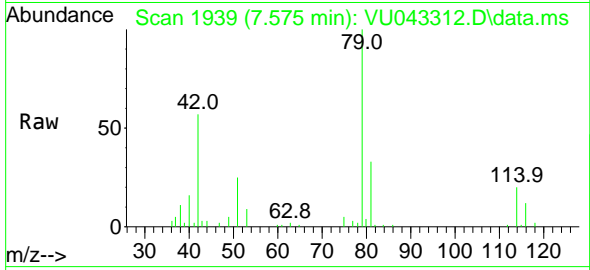




#39
 cis-1,3-Dichloropropene
 Concen: 0.10 ug/L
 RT: 7.575 min Scan# 1939
 Delta R.T. -0.042 min
 Lab File: VU043312.D
 Acq: 23 Apr 2021 23:57

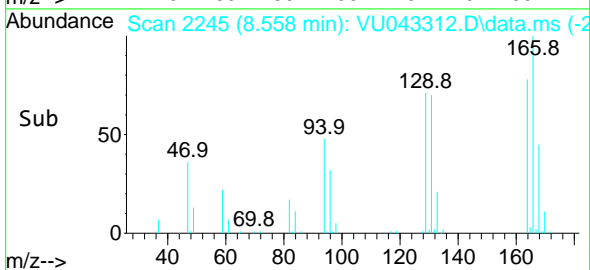
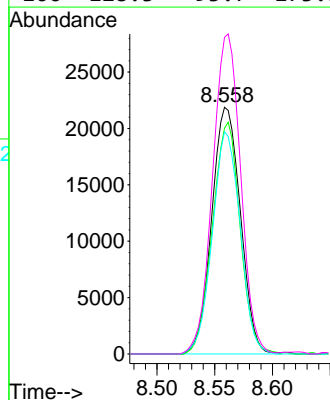
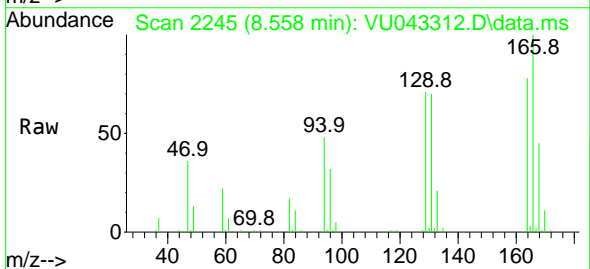
Instrument :
 MSVOA_U
 ClientSampled :

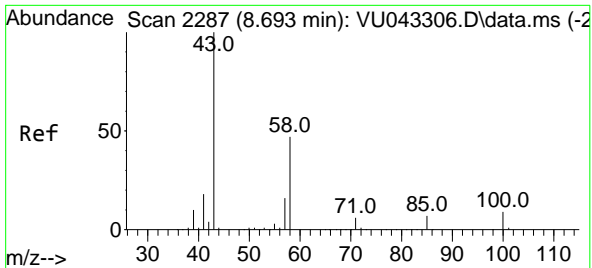
Tgt Ion: 75 Resp: 1135
 Ion Ratio Lower Upper
 75 100
 77 59.6 21.8 40.6#



#47
 Tetrachloroethene
 Concen: 6.50 ug/L
 RT: 8.558 min Scan# 2245
 Delta R.T. -0.003 min
 Lab File: VU043312.D
 Acq: 23 Apr 2021 23:57

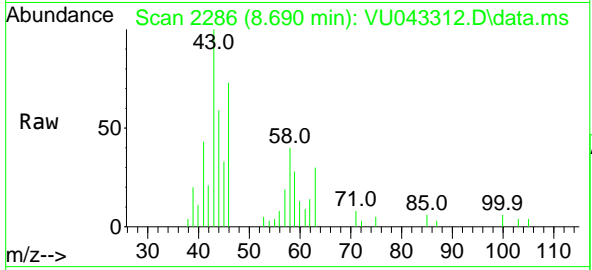
Tgt Ion:164 Resp: 37739
 Ion Ratio Lower Upper
 164 100
 129 91.6 66.6 123.8
 131 90.1 65.9 122.3
 166 128.3 93.7 173.9





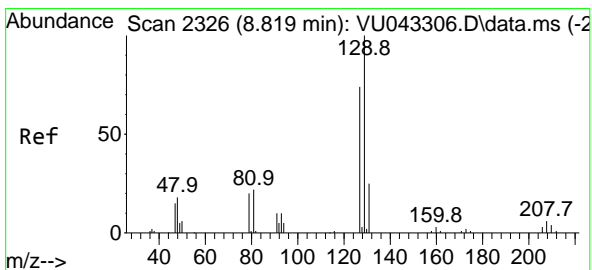
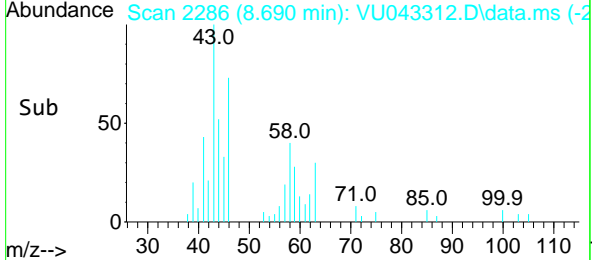
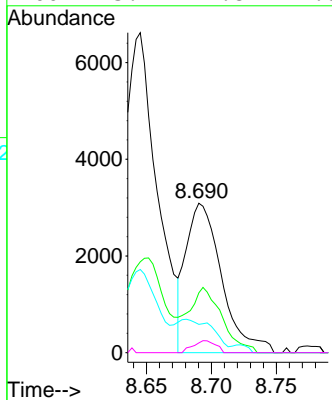
#48
 2-Hexanone
 Concen: 1.20 ug/L
 RT: 8.690 min Scan# 2286
 Delta R.T. -0.003 min
 Lab File: VU043312.D
 Acq: 23 Apr 2021 23:57

Instrument :
 MSVOA_U
 ClientSampled :

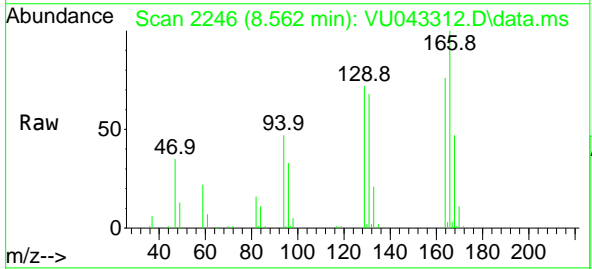


Tgt Ion: 43 Resp: 5906

Ion	Ratio	Lower	Upper
43	100		
58	41.0	50.0	75.0#
57	22.5	17.4	26.0
100	5.1	11.8	17.8#

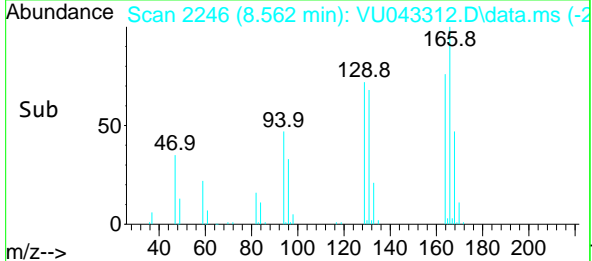
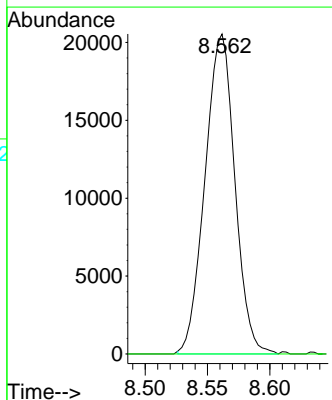


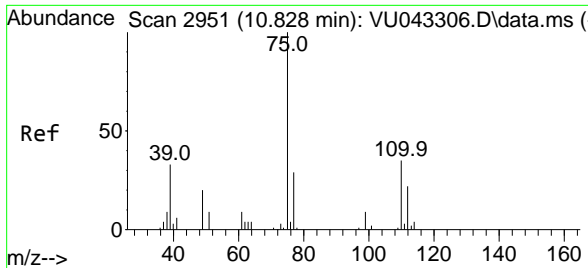
#49
 Dibromochloromethane
 Concen: 4.86 ug/L
 RT: 8.562 min Scan# 2246
 Delta R.T. -0.257 min
 Lab File: VU043312.D
 Acq: 23 Apr 2021 23:57



Tgt Ion: 129 Resp: 34272

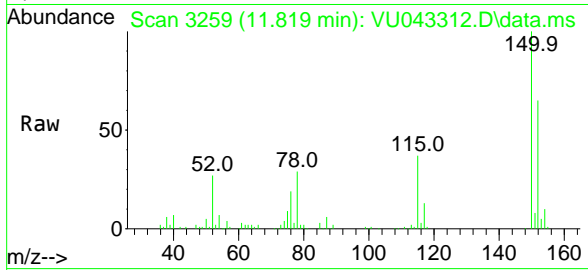
Ion	Ratio	Lower	Upper
129	100		
127	0.0	56.6	105.2#





#61
 1,2,3-Trichloropropane
 Concen: 1.26 ug/L
 RT: 11.819 min Scan# 3259
 Delta R.T. 0.990 min
 Lab File: VU043312.D
 Acq: 23 Apr 2021 23:57

Instrument :
 MSVOA_U
 ClientSampled :



Tgt Ion: 75 Resp: 5882

Ion	Ratio	Lower	Upper
75	100		
110	0.0	31.5	47.3#
77	36.5	26.3	39.5

