

Data Path : Z:\VOASRV\HPCHEM1\MSVOA U\DATA\VU042419\
 Data File : VU031489.D
 Acq On : 24 Apr 2019 22:47
 Operator : JC/SP
 Sample : K2536-12
 Misc : 25.0mL/MSVOA U/WATER
 ALS Vial : 34 Sample Multiplier: 1

Instrument :
 MSVOA_U
ClientSampled :
 C0XG2

Manual Integrations
APPROVED
 MMDadoda
 4/25/2019 10:57:29 AM

Quant Time: Apr 25 10:58:00 2019
 Quant Method : Z:\VOASRV\HPCHEM1\MSVOA_U\METHOD\SOMUTR042419WMA.M
 Quant Title : TRACE VOA SOM01.0
 QLast Update : Thu Apr 25 06:05:25 2019
 Response via : Initial Calibration

Internal Standards	R.T.	QIon	Response	Conc	Units	Dev(Min)
1) 1,4-Difluorobenzene	5.88	114	292487	5.00	ug/L	0.00
28) Chlorobenzene-d5	9.09	117	299424	5.00	ug/L	0.00
60) 1,4-Dichlorobenzene-d4	11.48	152	110519	5.00	ug/L	0.00

System Monitoring Compounds

4) Vinyl Chloride-d3	1.39	65	129451	5.53	ug/L	0.00
Spiked Amount	5.000	Range	40 - 130	Recovery	=	110.60%
7) Chloroethane-d5	1.68	69	104551	5.85	ug/L	0.00
Spiked Amount	5.000	Range	65 - 130	Recovery	=	117.00%
11) 1,1-Dichloroethene-d2	2.27	63	188802	4.28	ug/L	0.00
Spiked Amount	5.000	Range	60 - 125	Recovery	=	85.60%
20) 2-Butanone-d5	4.21	46	374946	59.72	ug/L	0.00
Spiked Amount	50.000	Range	40 - 130	Recovery	=	119.44%
24) Chloroform-d	4.64	84	218178	5.88	ug/L	0.00
Spiked Amount	5.000	Range	70 - 125	Recovery	=	117.60%
26) 1,2-Dichloroethane-d4	5.31	65	124879	6.32	ug/L	0.00
Spiked Amount	5.000	Range	70 - 130	Recovery	=	126.40%
32) Benzene-d6	5.33	84	422685	5.20	ug/L	0.00
Spiked Amount	5.000	Range	70 - 125	Recovery	=	104.00%
36) 1,2-Dichloropropane-d6	6.33	67	150198	5.68	ug/L	0.00
Spiked Amount	5.000	Range	60 - 140	Recovery	=	113.60%
41) Toluene-d8	7.56	98	349483	4.85	ug/L	0.00
Spiked Amount	5.000	Range	70 - 130	Recovery	=	97.00%
43) trans-1,3-Dichloropropene-	7.85	79	50278	4.85	ug/L	0.00
Spiked Amount	5.000	Range	55 - 130	Recovery	=	97.00%
46) 2-Hexanone-d5	8.31	63	265615	52.00	ug/L	0.00
Spiked Amount	50.000	Range	45 - 130	Recovery	=	104.00%
57) 1,1,2,2-Tetrachloroethane-	10.43	84	112841	5.36	ug/L	0.00
Spiked Amount	5.000	Range	65 - 120	Recovery	=	107.20%
64) 1,2-Dichlorobenzene-d4	11.86	152	111695	5.65	ug/L	0.00
Spiked Amount	5.000	Range	80 - 120	Recovery	=	113.00%

Target Compounds

Target Compounds	R.T.	QIon	Response	Conc	Units	Ovalue
9) Trichlorofluoromethane	1.88	101	903318	25.699	ug/L	98
13) Acetone	2.35	43	10508	2.356	ug/L	87
16) Methylene chloride	2.69	84	3937	0.171	ug/L	97
18) trans-1,2-Dichloroethene	2.98	96	6194	0.289	ug/L	94
22) cis-1,2-Dichloroethene	4.22	96	148474	6.705	ug/L	93
31) Carbon tetrachloride	5.13	117	19465	0.661	ug/L	99
34) Trichloroethene	6.17	95	28214514m	1157.057	ug/L	
47) Tetrachloroethene	8.22	164	565739	33.203	ug/L	98

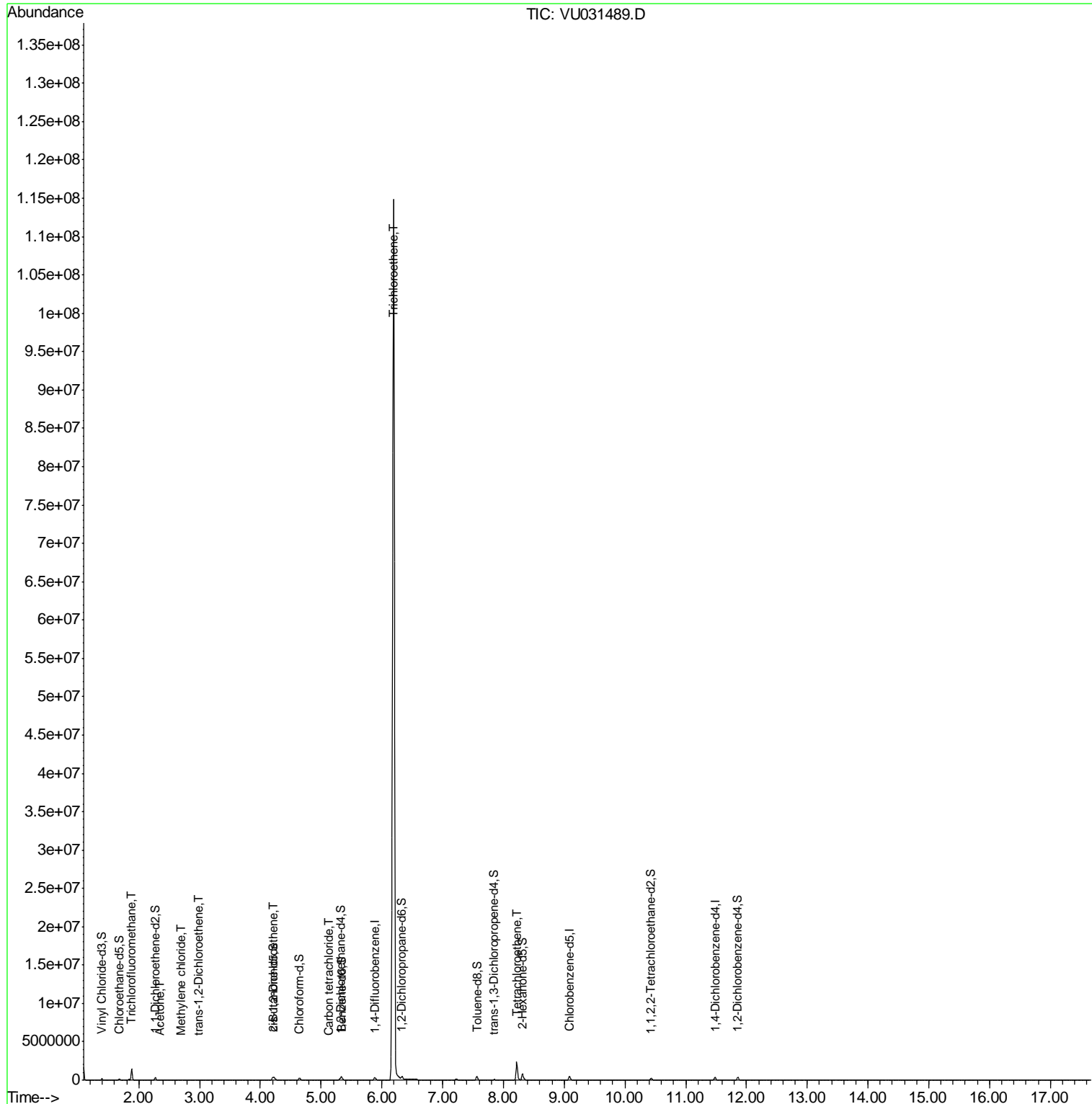
(#) = qualifier out of range (m) = manual integration (+) = signals summed

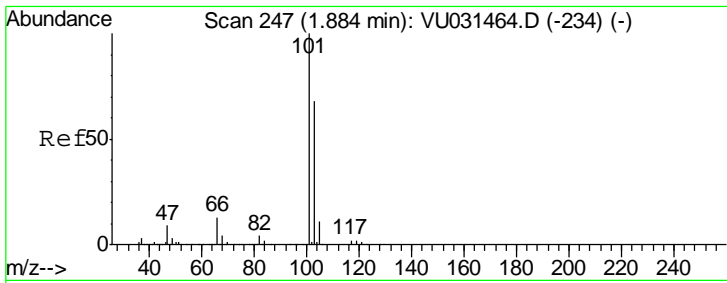
Data Path : Z:\VOASRV\HPCHEM1\MSVOA U\DATA\VU042419\
 Data File : VU031489.D
 Acq On : 24 Apr 2019 22:47
 Operator : JC/SP
 Sample : K2536-12
 Misc : 25.0mL/MSVOA U/WATER
 ALS Vial : 34 Sample Multiplier: 1

Instrument :
 MSVOA_U
Client Sampled :
 C0XG2

Manual Integrations
APPROVED
 MMDadoda
 4/25/2019 10:57:29 AM

Quant Time: Apr 25 10:58:00 2019
 Quant Method : Z:\VOASRV\HPCHEM1\MSVOA_U\METHOD\SOMUTR042419WMA.M
 Quant Title : TRACE VOA SOM01.0
 QLast Update : Thu Apr 25 06:05:25 2019
 Response via : Initial Calibration





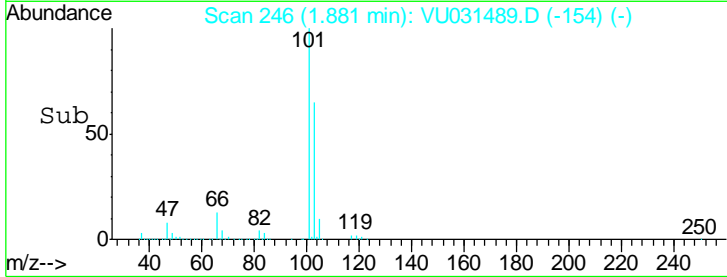
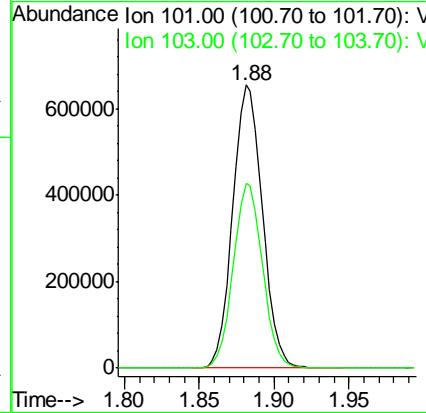
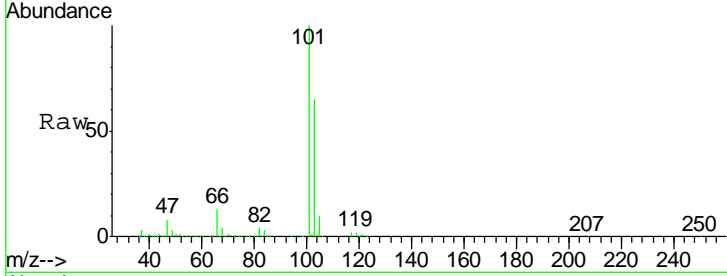
#9
 Trichlorofluoromethane
 Concen: 25.699 ug/L
 RT: 1.88 min Scan# 246
 Delta R.T. -0.00 min
 Lab File: VU031489.D
 Acq: 24 Apr 2019 22:47

Instrument :
 MSVOA_U
ClientSampled :
 C0XG2

Tgt Ion	Resp	Lower	Upper
101	100		
103	64.5	52.7	79.1

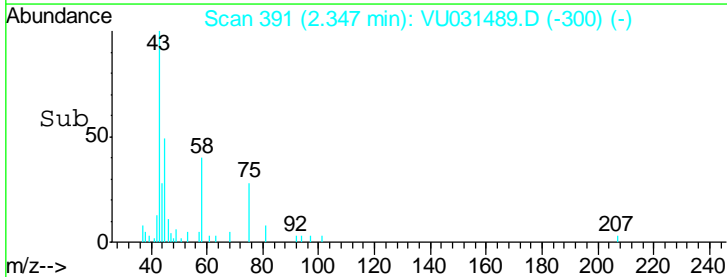
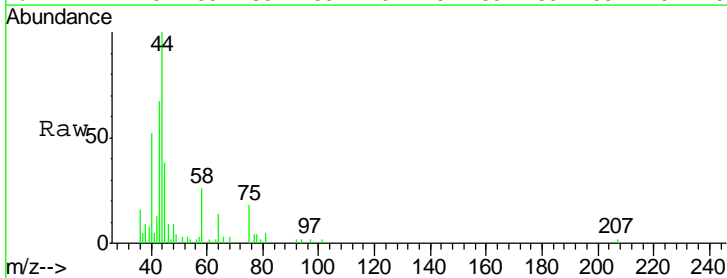
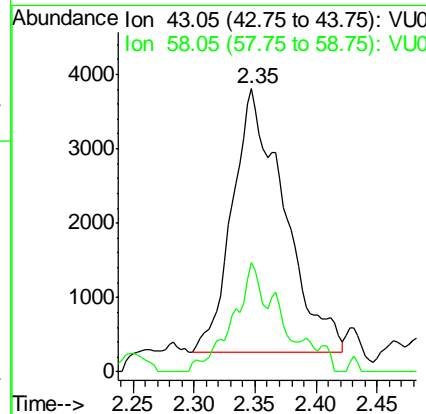
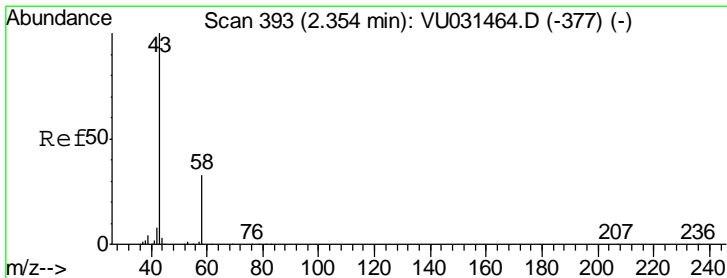
Manual Integrations
APPROVED

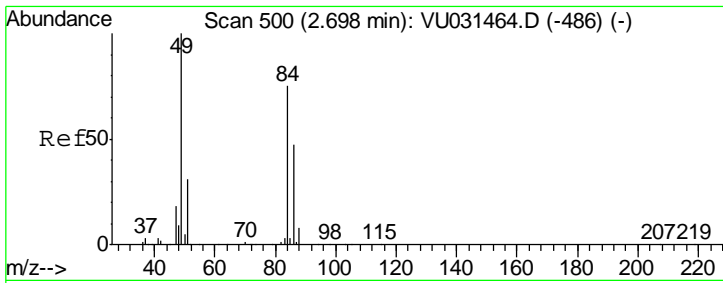
MMDadoda
 4/25/2019 10:57:29 AM



#13
 Acetone
 Concen: 2.356 ug/L
 RT: 2.35 min Scan# 391
 Delta R.T. -0.01 min
 Lab File: VU031489.D
 Acq: 24 Apr 2019 22:47

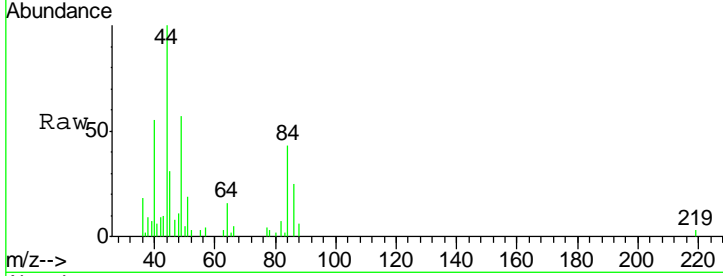
Tgt Ion	Resp	Lower	Upper
43	100		
58	24.2	0.0	62.4





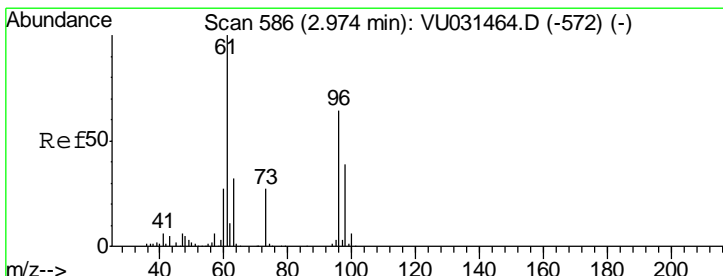
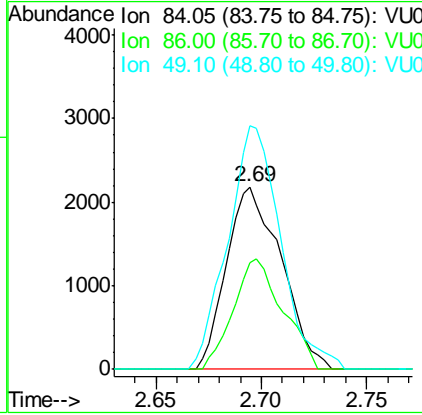
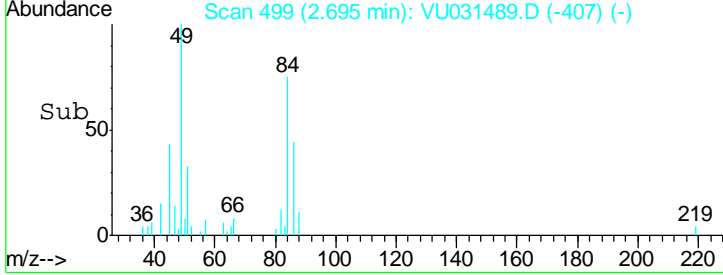
#16
 Methylene chloride
 Concen: 0.171 ug/L
 RT: 2.69 min Scan# 499
 Delta R.T. -0.00 min
 Lab File: VU031489.D
 Acq: 24 Apr 2019 22:47

Instrument :
 MSVOA_U
ClientSampled :
 C0XG2



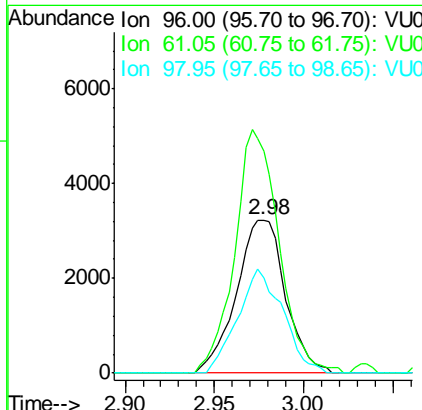
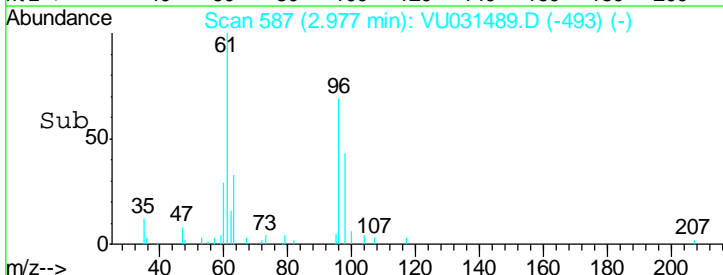
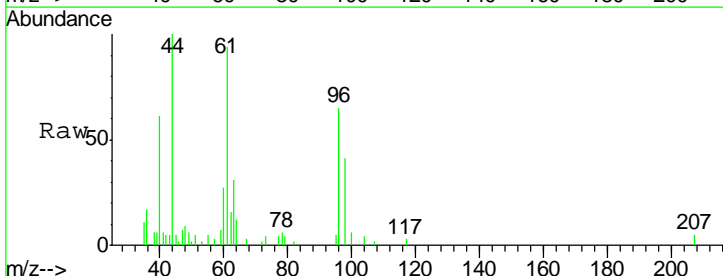
Tgt Ion	Resp	Lower	Upper
84	100		
86	58.7	44.9	83.5
49	133.6	92.9	172.5

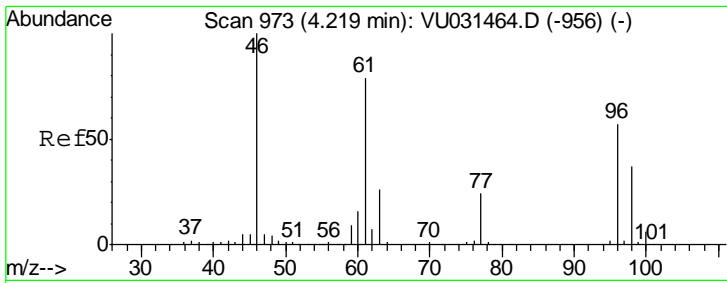
Manual Integrations
APPROVED
 MMDadoda
 4/25/2019 10:57:29 AM



#18
 trans-1,2-Dichloroethene
 Concen: 0.289 ug/L
 RT: 2.98 min Scan# 587
 Delta R.T. 0.00 min
 Lab File: VU031489.D
 Acq: 24 Apr 2019 22:47

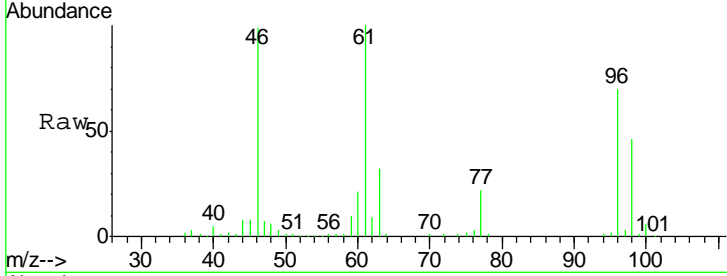
Tgt Ion	Resp	Lower	Upper
96	100		
61	144.9	108.4	201.2
98	62.4	45.1	83.9





#22
 cis-1,2-Dichloroethene
 Concen: 6.705 ug/L
 RT: 4.22 min Scan# 973
 Delta R.T. -0.00 min
 Lab File: VU031489.D
 Acq: 24 Apr 2019 22:47

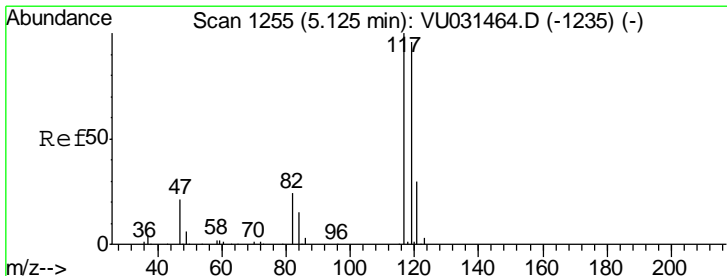
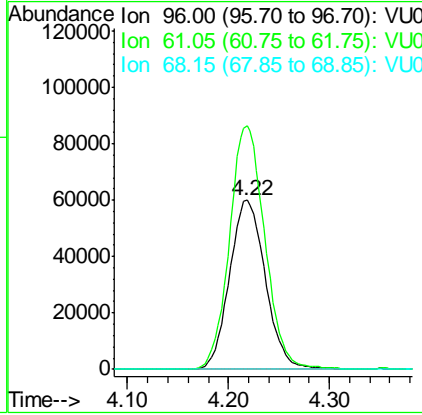
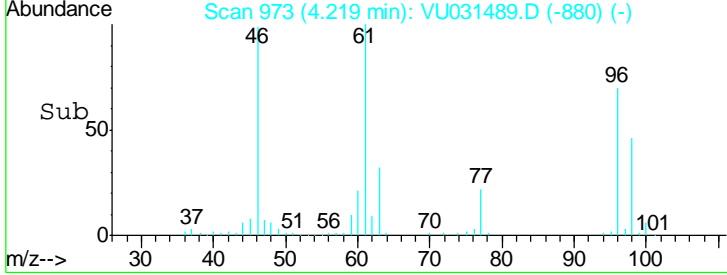
Instrument : MSVOA_U
 ClientSampled : C0XG2



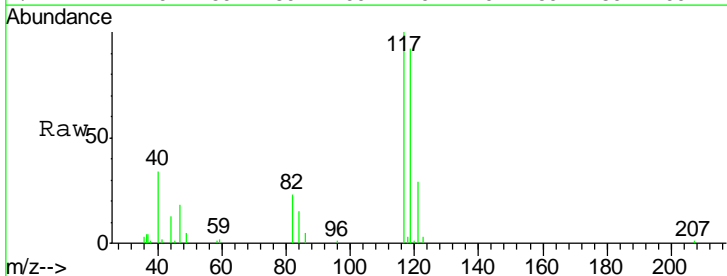
Tgt Ion: 96 Resp: 148474

Ion	Ratio	Lower	Upper
96	100		
61	143.9	94.8	176.2
68	0.0	0.0	0.0

Manual Integrations APPROVED
 MMDadoda
 4/25/2019 10:57:29 AM

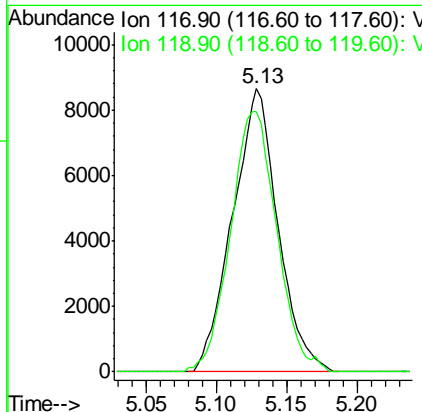
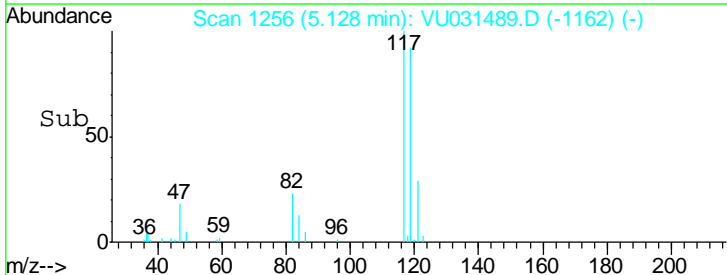


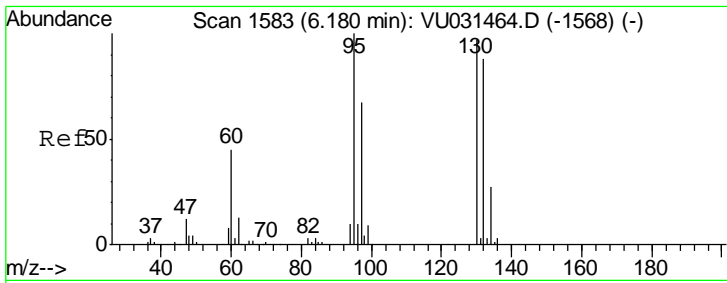
#31
 Carbon tetrachloride
 Concen: 0.661 ug/L
 RT: 5.13 min Scan# 1256
 Delta R.T. 0.00 min
 Lab File: VU031489.D
 Acq: 24 Apr 2019 22:47



Tgt Ion: 117 Resp: 19465

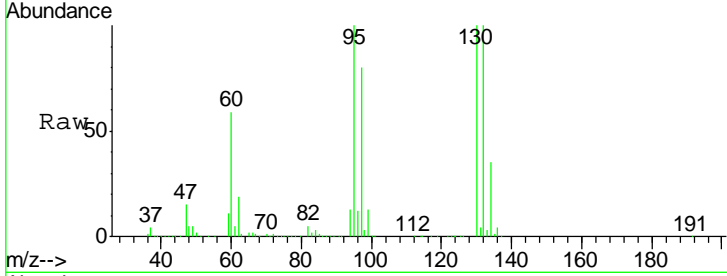
Ion	Ratio	Lower	Upper
117	100		
119	94.0	76.0	114.0





#34
 Trichloroethene
 Concen: 1157.057 ug/L m
 RT: 6.17 min Scan# 1581
 Delta R.T. -0.01 min
 Lab File: VU031489.D
 Acq: 24 Apr 2019 22:47

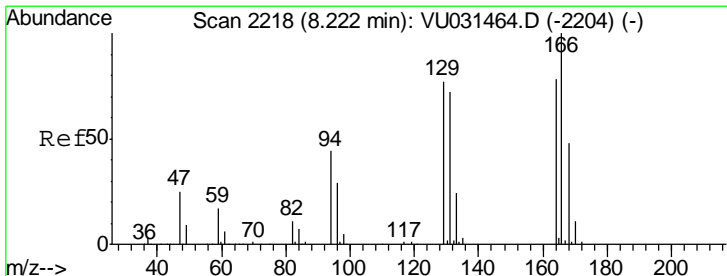
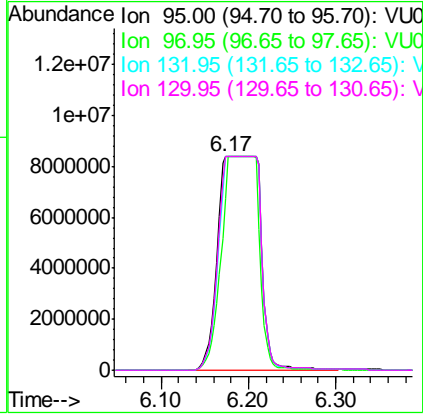
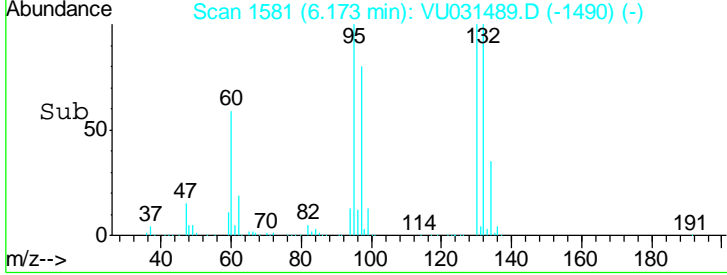
Instrument :
 MSVOA_U
 ClientSampled :
 C0XG2



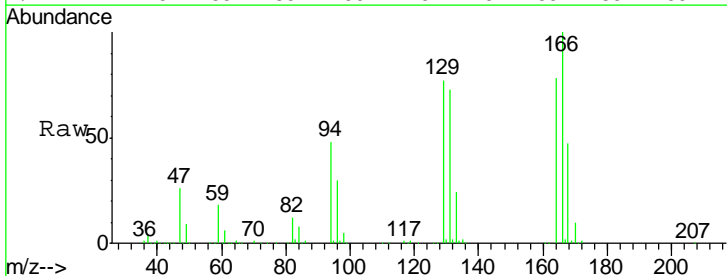
Tgt Ion: 95 Resp: 28214514

Ion	Ratio	Lower	Upper
95	100		
97	80.2	44.3	82.3
132	100.0	59.9	111.3
130	100.0	67.1	124.5

Manual Integrations
APPROVED
 MMDadoda
 4/25/2019 10:57:29 AM



#47
 Tetrachloroethene
 Concen: 33.203 ug/L
 RT: 8.22 min Scan# 2218
 Delta R.T. -0.00 min
 Lab File: VU031489.D
 Acq: 24 Apr 2019 22:47



Tgt Ion: 164 Resp: 565739

Ion	Ratio	Lower	Upper
164	100		
129	99.2	67.5	125.3
131	93.9	64.0	119.0
166	128.6	88.5	164.4

