

Data Path : Z:\VOASRV\HPCHEM1\MSVOA U\DATA\VU042420\
 Data File : VU037881.D
 Acq On : 24 Apr 2020 19:04
 Operator : JC/MD
 Sample : L2395-15
 Misc : 5.0mL/MSVOA U/WATER
 ALS Vial : 1 Sample Multiplier: 1

Instrument :
 MSVOA_U
 ClientSampled :

Quant Time: Apr 25 01:17:31 2020
 Quant Method : Z:\VOASRV\HPCHEM1\MSVOA_U\METHOD\SOMULM042320WMA.M
 Quant Title : VOC Analysis
 QLast Update : Sat Apr 25 01:13:34 2020
 Response via : Initial Calibration

Internal Standards	R.T.	QIon	Response	Conc	Units	Dev(Min)
1) 1,4-Difluorobenzene	6.28	114	619921	50.00	ug/L	0.00
28) Chlorobenzene-d5	9.44	117	611790	50.00	ug/L	0.00
60) 1,4-Dichlorobenzene-d4	11.83	152	210544	50.00	ug/L	0.00

System Monitoring Compounds

4) Vinyl Chloride-d3	1.61	65	244151	45.07	ug/L	0.00
Spiked Amount	50.000	Range	60 - 135	Recovery	=	90.14%
7) Chloroethane-d5	1.93	69	197958	47.16	ug/L	0.00
Spiked Amount	50.000	Range	70 - 130	Recovery	=	94.32%
11) 1,1-Dichloroethene-d2	2.60	63	2174624	248.04	ug/L	0.00
Spiked Amount	50.000	Range	60 - 125	Recovery	=	496.08%#
21) 2-Butanone-d5	4.66	46	498595	116.17	ug/L	0.00
Spiked Amount	100.000	Range	40 - 130	Recovery	=	116.17%
24) Chloroform-d	5.10	84	384553	46.61	ug/L	0.00
Spiked Amount	50.000	Range	70 - 125	Recovery	=	93.22%
26) 1,2-Dichloroethane-d4	5.74	65	268330	46.97	ug/L	0.00
Spiked Amount	50.000	Range	70 - 125	Recovery	=	93.94%
32) Benzene-d6	5.76	84	824400	47.65	ug/L	0.00
Spiked Amount	50.000	Range	70 - 125	Recovery	=	95.30%
36) 1,2-Dichloropropane-d6	6.73	67	279295	48.27	ug/L	0.00
Spiked Amount	50.000	Range	70 - 120	Recovery	=	96.54%
41) Toluene-d8	7.92	98	761886	47.91	ug/L	0.00
Spiked Amount	50.000	Range	80 - 120	Recovery	=	95.82%
43) trans-1,3-Dichloropropene-	8.20	79	139556	46.86	ug/L	0.00
Spiked Amount	50.000	Range	60 - 125	Recovery	=	93.72%
47) 2-Hexanone-d5	8.65	63	378978	120.31	ug/L	0.00
Spiked Amount	100.000	Range	45 - 130	Recovery	=	120.31%
57) 1,1,2,2-Tetrachloroethane-	10.77	84	296200	36.79	ug/L	0.00
Spiked Amount	50.000	Range	65 - 120	Recovery	=	73.58%
64) 1,2-Dichlorobenzene-d4	12.20	152	278917	68.08	ug/L	0.00
Spiked Amount	50.000	Range	80 - 120	Recovery	=	136.16%#

Target Compounds

Target Compounds	R.T.	QIon	Response	Conc	Units	Ovalue
5) Vinyl chloride	1.62	62	11315	1.840	ug/L #	35
10) 1,1,2-Trichloro-1,2,2-trif	2.60	101	9934	2.607	ug/L #	31
12) 1,1-Dichloroethene	2.60	96	3184063	846.012	ug/L #	71
13) Acetone	2.66	43	11219	4.381	ug/L	100
16) Methylene chloride	3.08	84	1156457	258.591	ug/L	98
17) trans-1,2-Dichloroethene	3.39	96	4746	1.128	ug/L	99
19) 1,1-Dichloroethane	3.91	63	140410	16.552	ug/L	100
20) cis-1,2-Dichloroethene	4.71	96	1182403	256.624	ug/L	100
25) Chloroform	5.13	83	20577	2.592	ug/L	99
27) 1,2-Dichloroethane	5.83	62	14439	2.124	ug/L	97
30) 1,1,1-Trichloroethane	5.36	97	5238005	766.647	ug/L	99
39) cis-1,3-Dichloropropene	7.59	75	8273	1.019	ug/L #	60
42) Toluene	7.99	91	47363	2.433	ug/L	100
45) 1,1,2-Trichloroethane	8.42	97	55603	12.568	ug/L	97
46) Tetrachloroethene	8.57	164	6561	1.971	ug/L	96
49) Dibromochloromethane	8.57	129	6033	1.306	ug/L #	10
52) Ethylbenzene	9.59	91	53260	2.443	ug/L	99

Data Path : Z:\VOASRV\HPCHEM1\MSVOA U\DATA\VU042420\
Data File : VU037881.D
Acq On : 24 Apr 2020 19:04
Operator : JC/MD
Sample : L2395-15
Misc : 5.0mL/MSVOA U/WATER
ALS Vial : 1 Sample Multiplier: 1

Instrument :
MSVOA_U
ClientSampleId :

Quant Time: Apr 25 01:17:31 2020
Quant Method : Z:\VOASRV\HPCHEM1\MSVOA_U\METHOD\SOMULM042320WMA.M
Quant Title : VOC Analysis
QLast Update : Sat Apr 25 01:13:34 2020
Response via : Initial Calibration

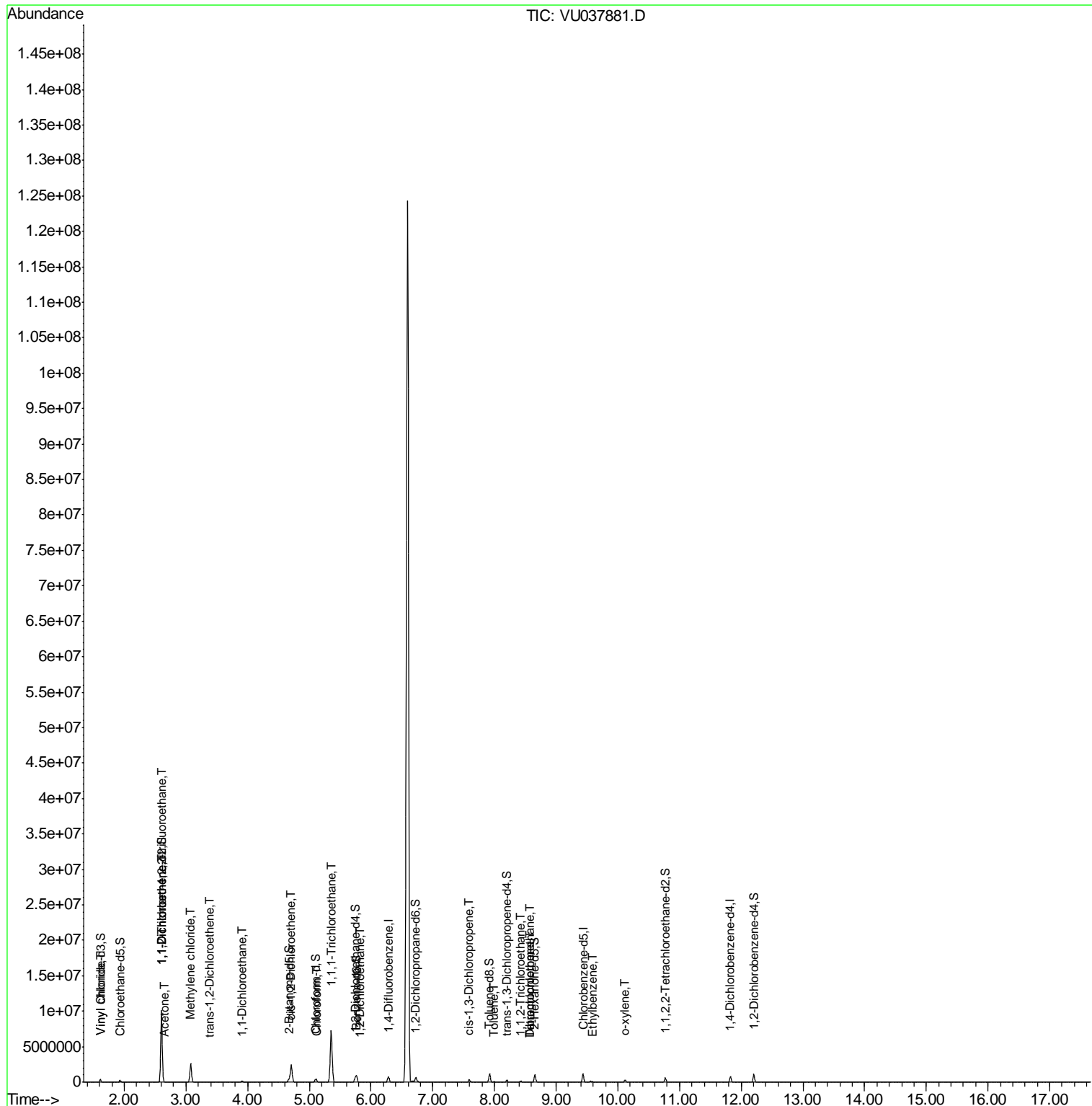
Internal Standards	R.T.	QIon	Response	Conc	Units	Dev(Min)
54) o-xylene	10.11	106	86809	10.813	ug/L	96

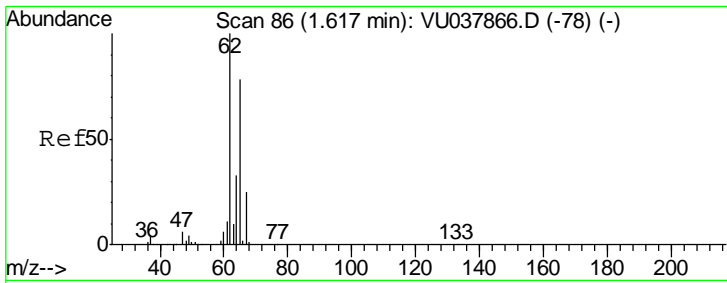
(#) = qualifier out of range (m) = manual integration (+) = signals summed

Data Path : Z:\VOASRV\HPCHEM1\MSVOA U\DATA\VU042420\
 Data File : VU037881.D
 Acq On : 24 Apr 2020 19:04
 Operator : JC/MD
 Sample : L2395-15
 Misc : 5.0mL/MSVOA U/WATER
 ALS Vial : 1 Sample Multiplier: 1

Instrument :
 MSVOA_U
 ClientSampled :

Quant Time: Apr 25 01:17:31 2020
 Quant Method : Z:\VOASRV\HPCHEM1\MSVOA_U\METHOD\SOMULM042320WMA.M
 Quant Title : VOC Analysis
 QLast Update : Sat Apr 25 01:13:34 2020
 Response via : Initial Calibration

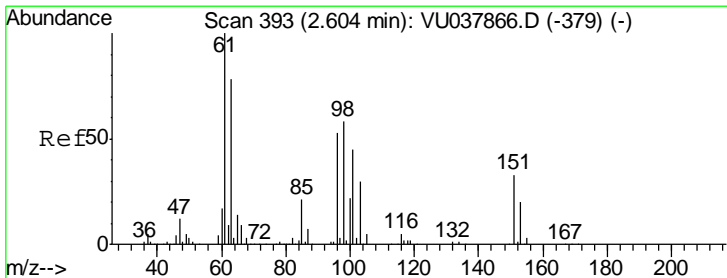
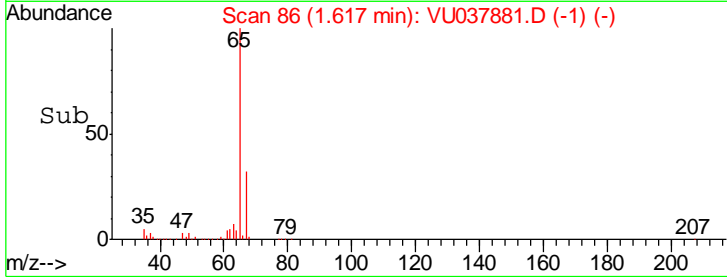
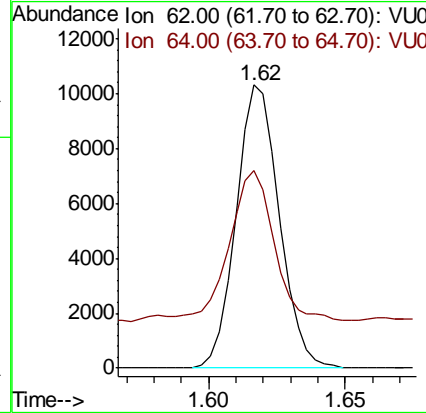
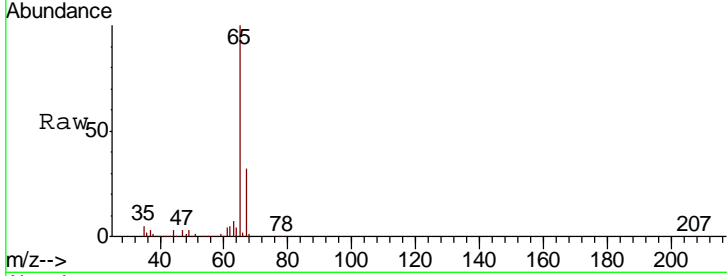




#5
 Vinyl chloride
 Concen: 1.840 ug/L
 RT: 1.62 min Scan# 86
 Delta R.T. 0.00 min
 Lab File: VU037881.D
 Acq: 24 Apr 2020 19:04

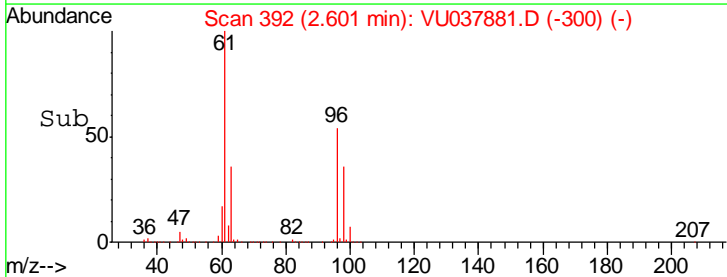
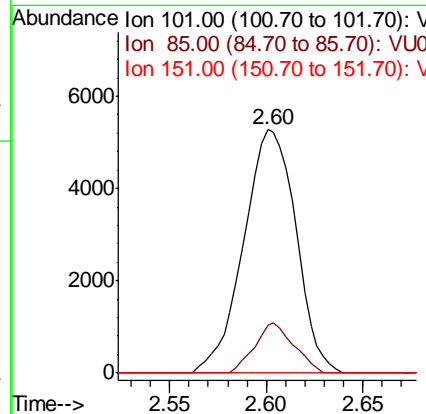
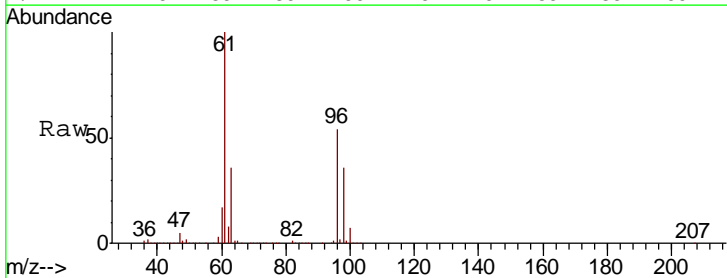
Instrument :
 MSVOA_U
 ClientSampled :

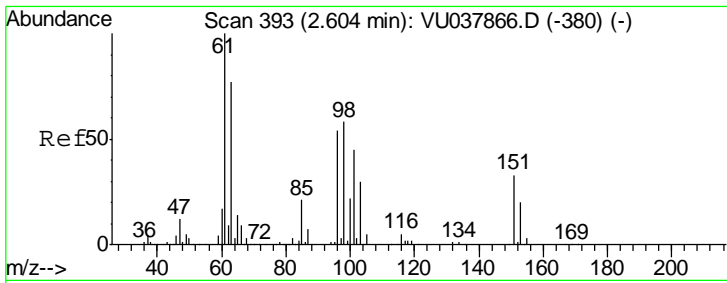
Tgt Ion	Resp	Lower	Upper
62	11315		
64	69.8	23.2	43.0#



#10
 1,1,2-Trichloro-1,2,2-trifluoroethane
 Concen: 2.607 ug/L
 RT: 2.60 min Scan# 392
 Delta R.T. -0.00 min
 Lab File: VU037881.D
 Acq: 24 Apr 2020 19:04

Tgt Ion	Resp	Lower	Upper
101	9934		
85	15.5	36.2	54.4#
151	0.0	55.5	83.3#

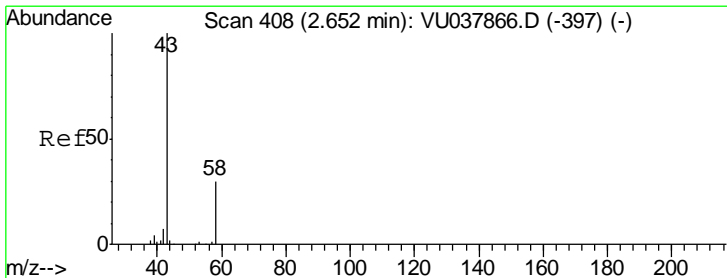
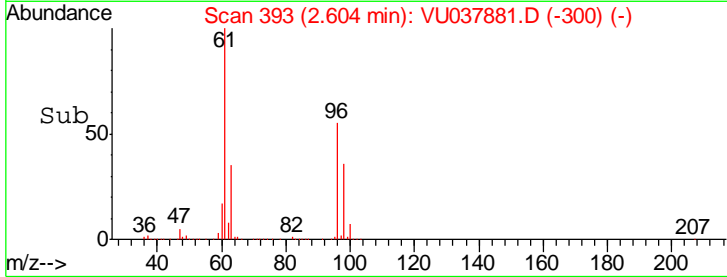
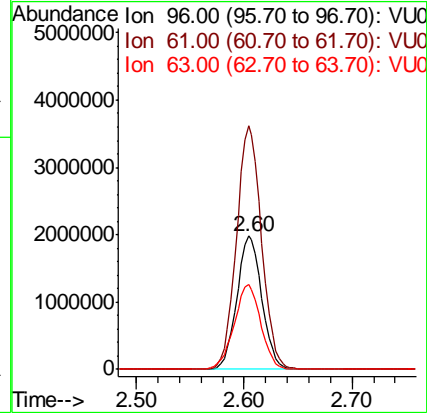
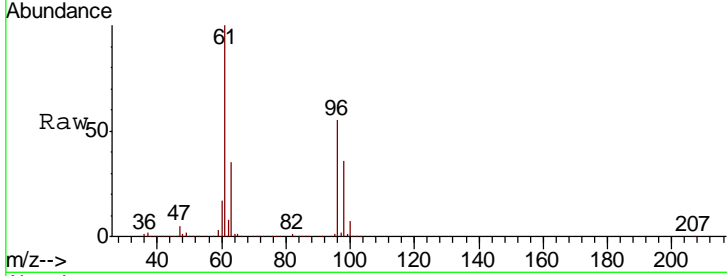




#12
 1,1-Dichloroethene
 Concen: 846.012 ug/L
 RT: 2.60 min Scan# 393
 Delta R.T. 0.00 min
 Lab File: VU037881.D
 Acq: 24 Apr 2020 19:04

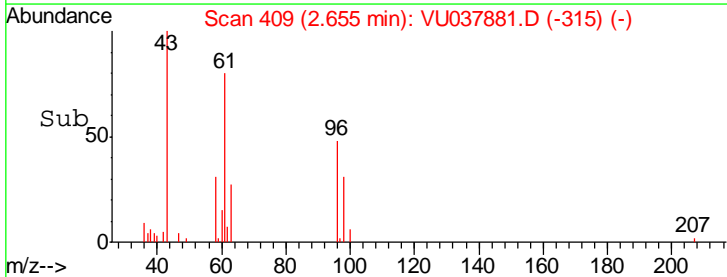
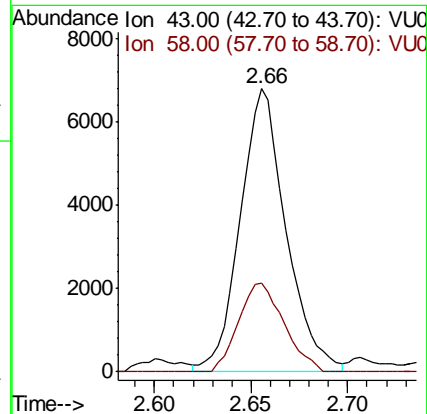
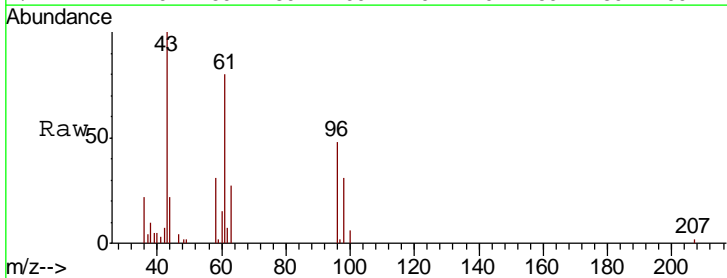
Instrument :
 MSVOA_U
 ClientSampled :

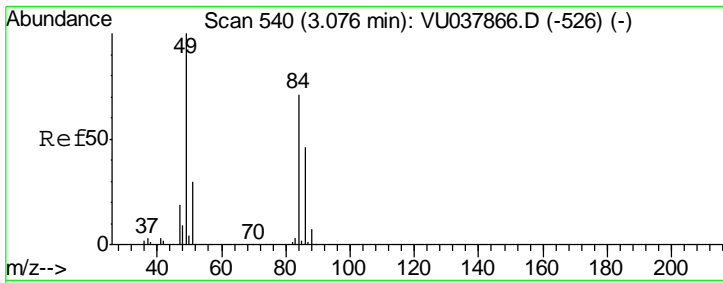
Tgt Ion	Resp	Lower	Upper
96	3184063		
Ion Ratio			
96	100		
61	182.6	134.1	249.0
63	63.2	96.5	179.1#



#13
 Acetone
 Concen: 4.381 ug/L
 RT: 2.66 min Scan# 409
 Delta R.T. 0.00 min
 Lab File: VU037881.D
 Acq: 24 Apr 2020 19:04

Tgt Ion	Resp	Lower	Upper
43	11219		
Ion Ratio			
43	100		
58	31.1	0.0	62.0

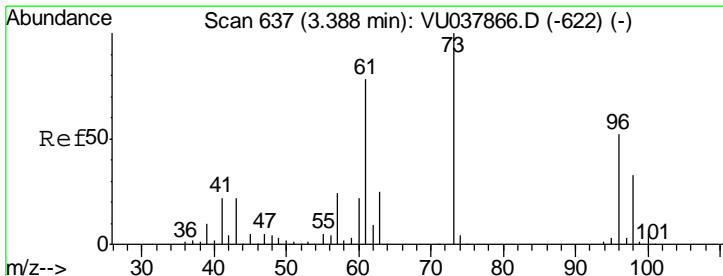
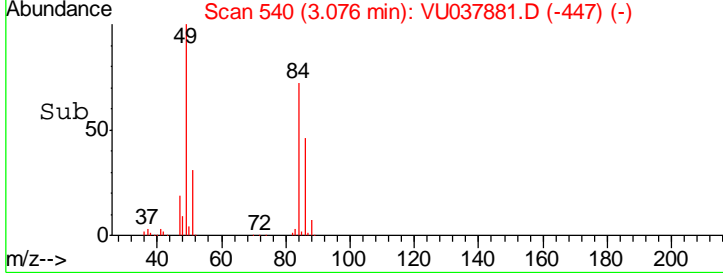
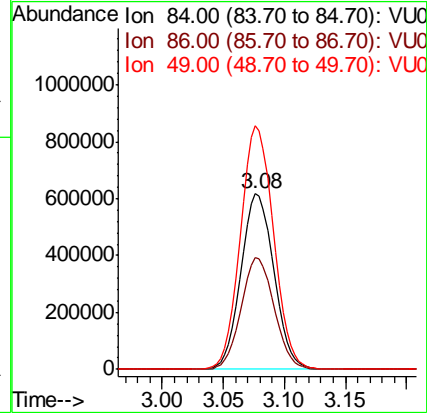
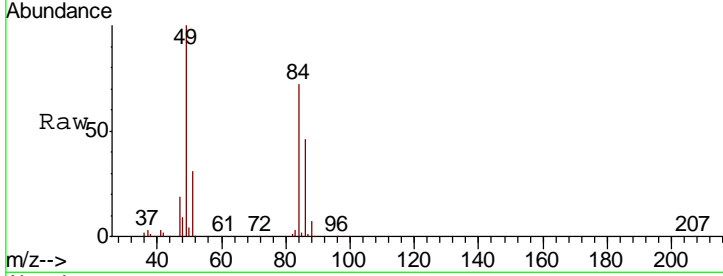




#16
 Methylene chloride
 Concen: 258.591 ug/L
 RT: 3.08 min Scan# 540
 Delta R.T. 0.00 min
 Lab File: VU037881.D
 Acq: 24 Apr 2020 19:04

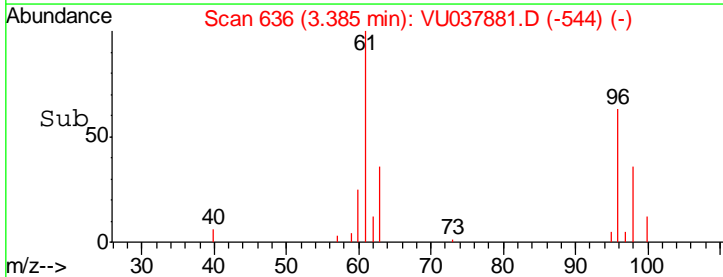
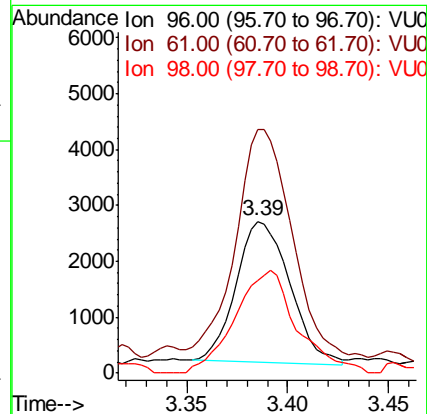
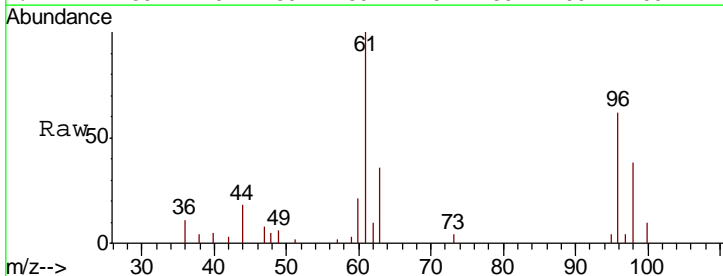
Instrument :
 MSVOA_U
 ClientSampled :

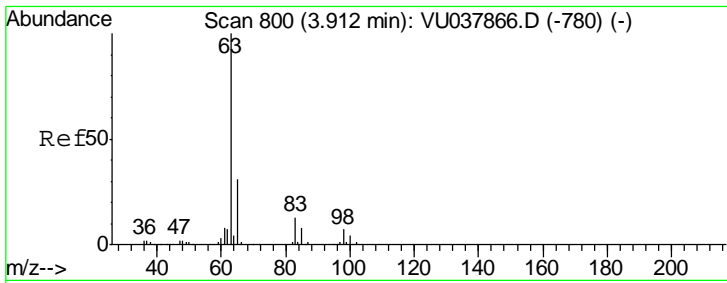
Tgt Ion	Resp	Lower	Upper
84	1156457		
84	100		
86	63.5	43.5	80.7
49	139.0	95.1	176.7



#17
 trans-1,2-Dichloroethene
 Concen: 1.128 ug/L
 RT: 3.39 min Scan# 636
 Delta R.T. -0.00 min
 Lab File: VU037881.D
 Acq: 24 Apr 2020 19:04

Tgt Ion	Resp	Lower	Upper
96	4746		
96	100		
61	160.2	111.4	207.0
98	60.9	43.9	81.5

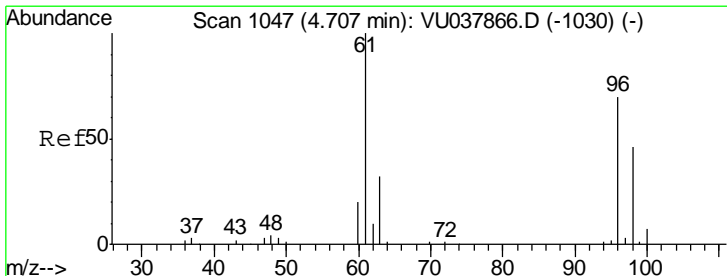
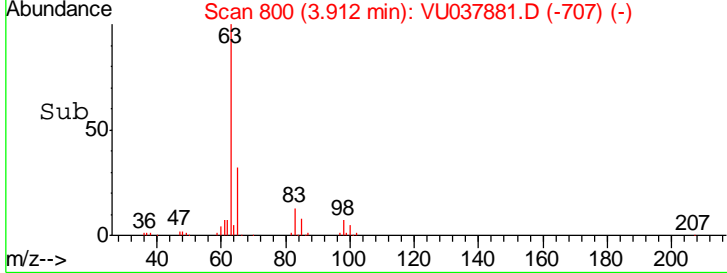
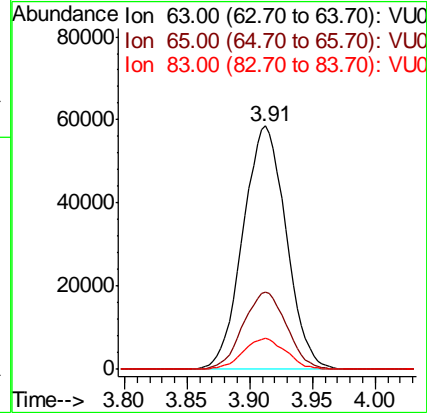
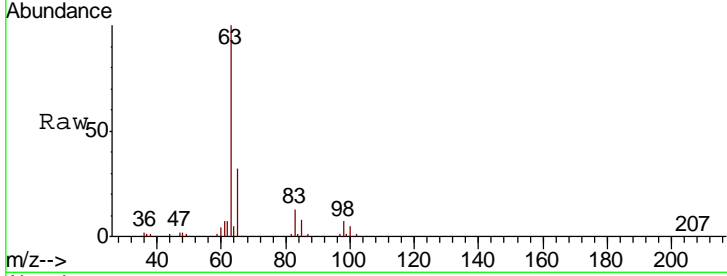




#19
 1,1-Dichloroethane
 Concen: 16.552 ug/L
 RT: 3.91 min Scan# 800
 Delta R.T. 0.00 min
 Lab File: VU037881.D
 Acq: 24 Apr 2020 19:04

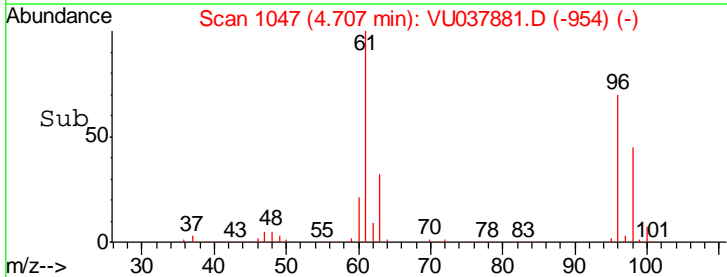
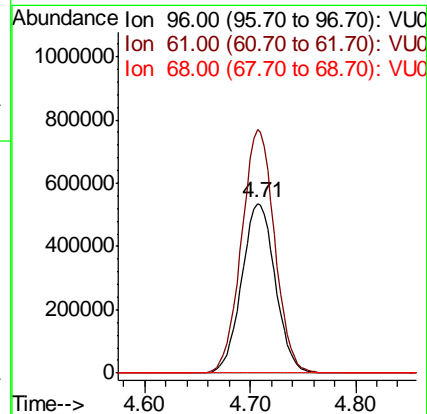
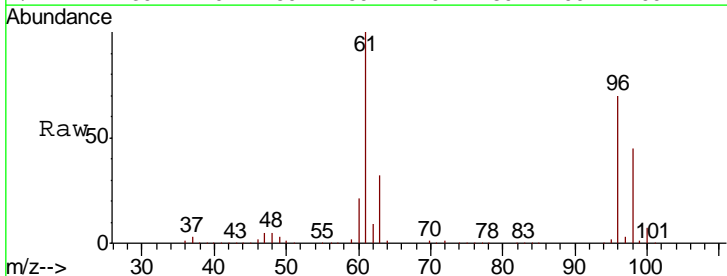
Instrument : MSVOA_U
 ClientSampled :

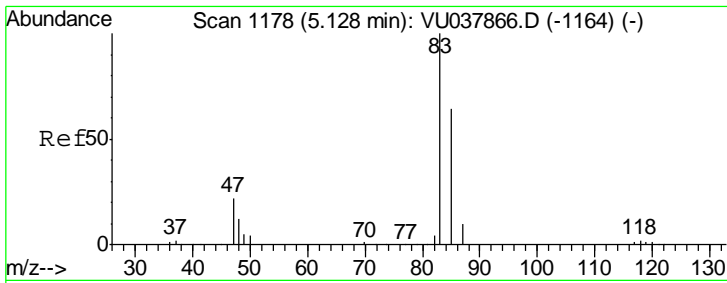
Tgt Ion	Resp	Lower	Upper
63	140410		
65	31.7	22.2	41.2
83	12.6	8.6	16.0



#20
 cis-1,2-Dichloroethene
 Concen: 256.624 ug/L
 RT: 4.71 min Scan# 1047
 Delta R.T. 0.00 min
 Lab File: VU037881.D
 Acq: 24 Apr 2020 19:04

Tgt Ion	Resp	Lower	Upper
96	1182403		
61	143.2	100.4	186.4
68	0.0	0.0	0.0

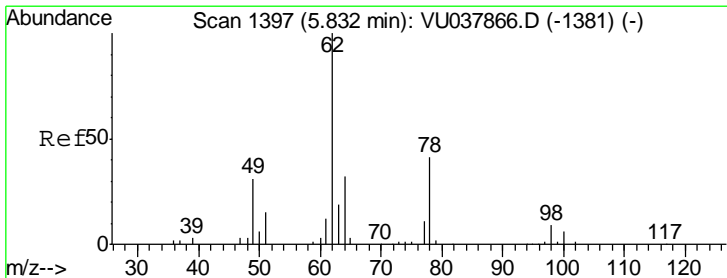
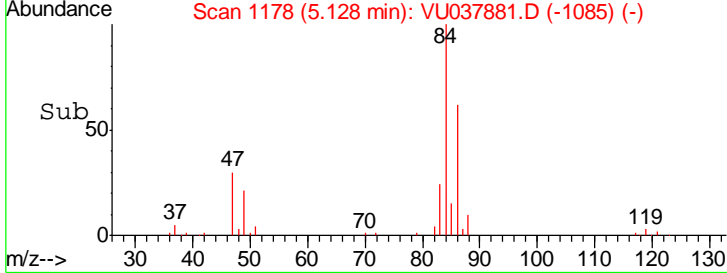
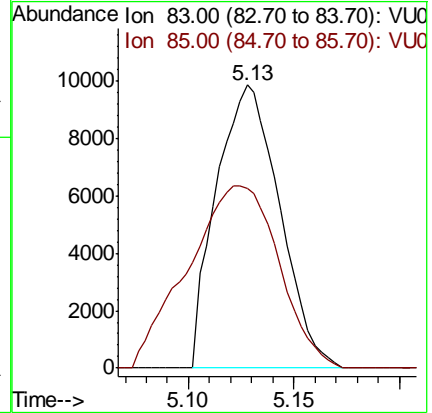
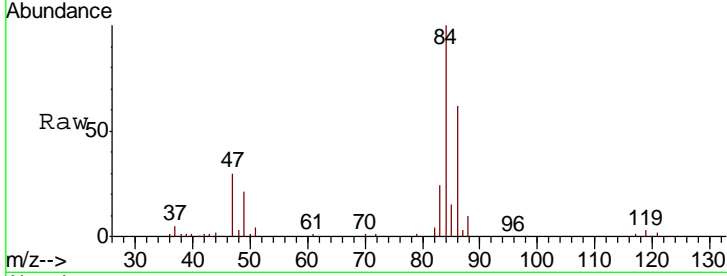




#25
 Chloroform
 Concen: 2.592 ug/L
 RT: 5.13 min Scan# 1178
 Delta R.T. 0.00 min
 Lab File: VU037881.D
 Acq: 24 Apr 2020 19:04

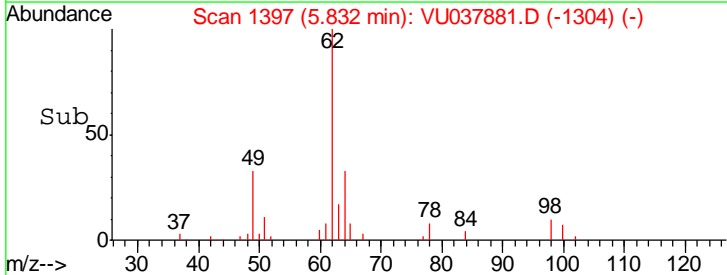
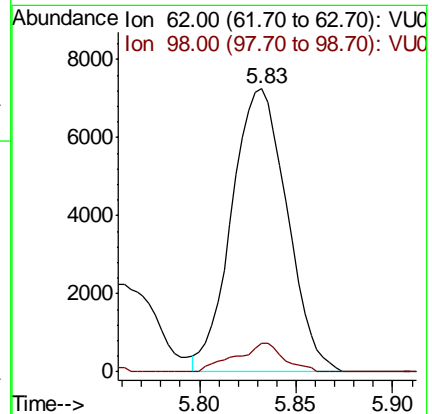
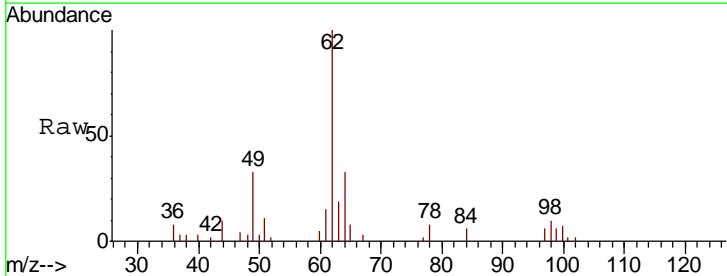
Instrument :
 MSVOA_U
 ClientSampled :

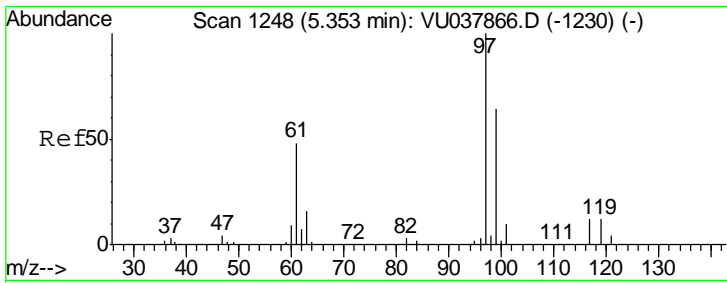
Tgt Ion	Resp	Lower	Upper
83	20577		
83	100		
85	63.5	45.1	83.9



#27
 1,2-Dichloroethane
 Concen: 2.124 ug/L
 RT: 5.83 min Scan# 1397
 Delta R.T. 0.00 min
 Lab File: VU037881.D
 Acq: 24 Apr 2020 19:04

Tgt Ion	Resp	Lower	Upper
62	14439		
62	100		
98	10.2	7.3	10.9

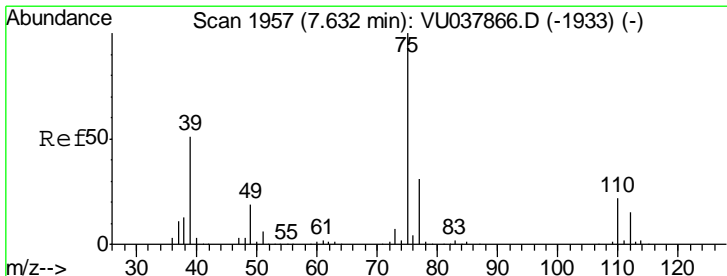
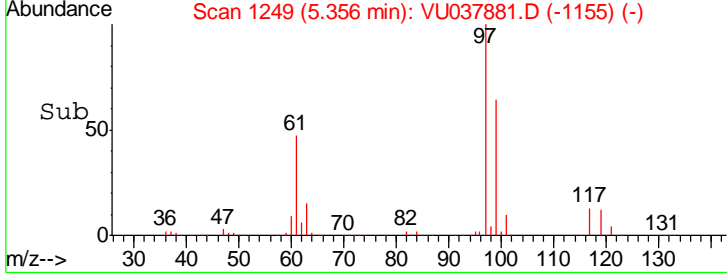
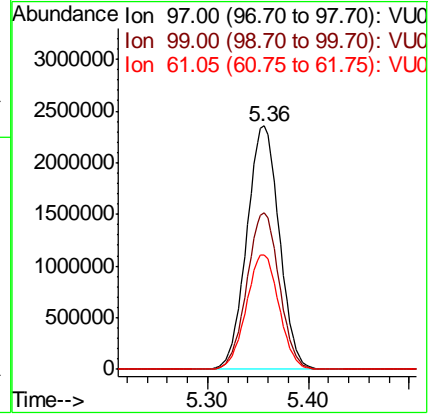
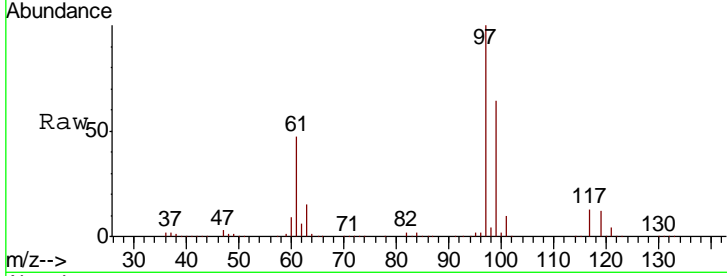




#30
 1,1,1-Trichloroethane
 Concen: 766.647 ug/L
 RT: 5.36 min Scan# 1249
 Delta R.T. 0.00 min
 Lab File: VU037881.D
 Acq: 24 Apr 2020 19:04

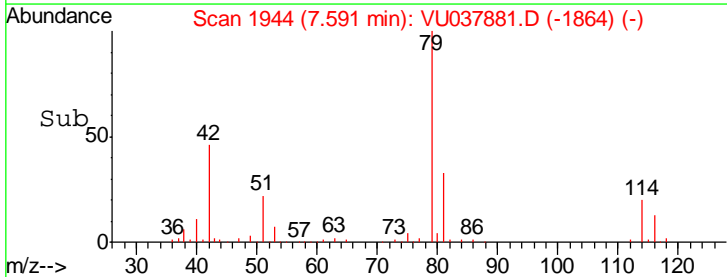
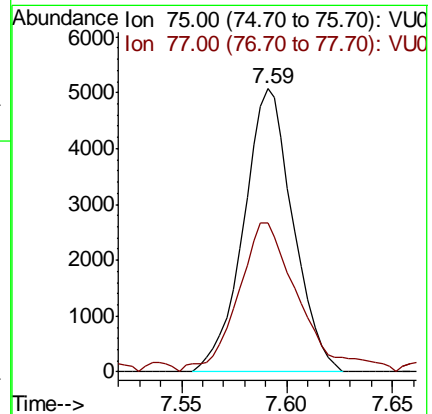
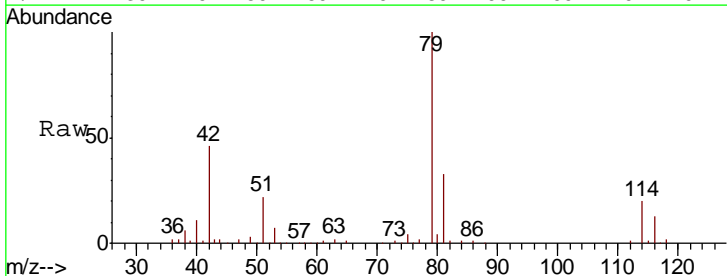
Instrument :
 MSVOA_U
 ClientSampled :

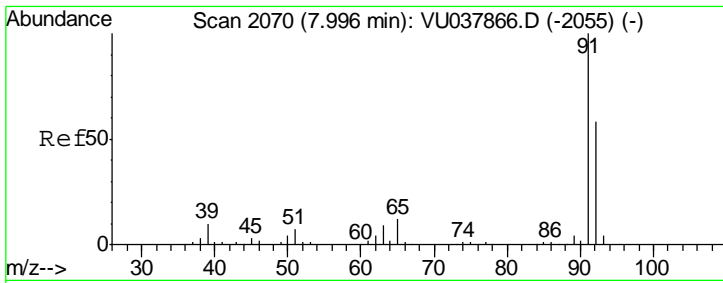
Tgt Ion	Resp	Lower	Upper
97	100		
99	64.1	50.7	76.1
61	47.5	38.9	58.3



#39
 cis-1,3-Dichloropropene
 Concen: 1.019 ug/L
 RT: 7.59 min Scan# 1944
 Delta R.T. -0.04 min
 Lab File: VU037881.D
 Acq: 24 Apr 2020 19:04

Tgt Ion	Resp	Lower	Upper
75	100		
77	52.8	21.7	40.3#

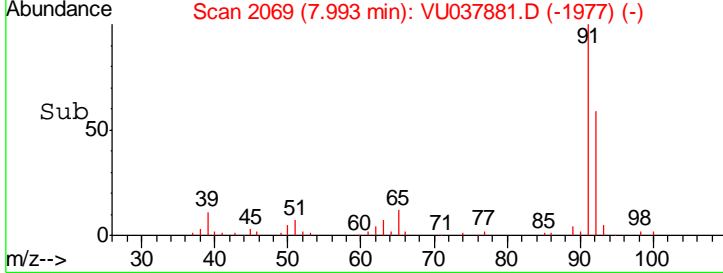
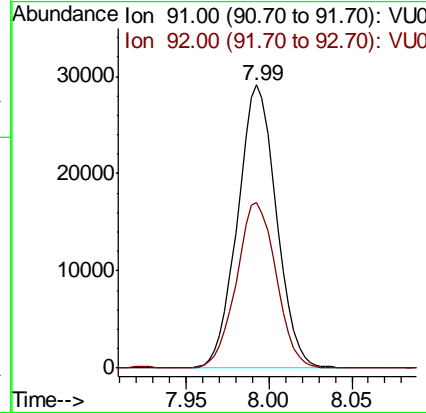
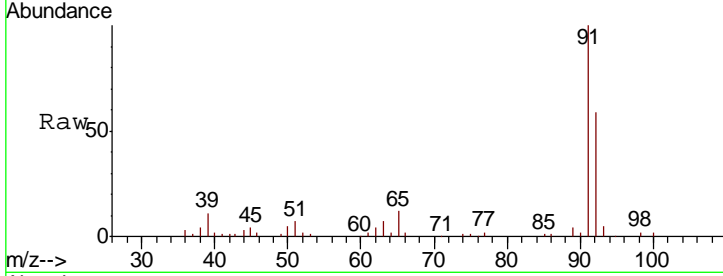




#42
 Toluene
 Concen: 2.433 ug/L
 RT: 7.99 min Scan# 2069
 Delta R.T. -0.00 min
 Lab File: VU037881.D
 Acq: 24 Apr 2020 19:04

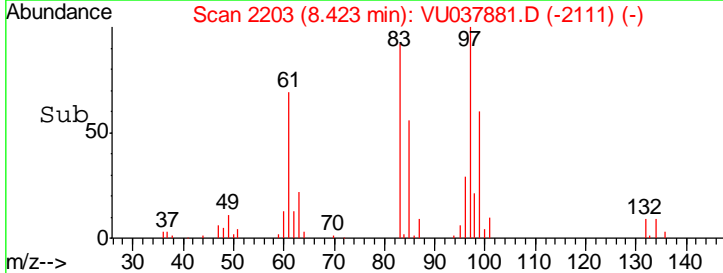
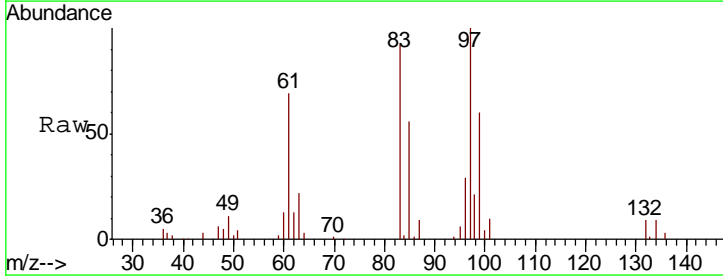
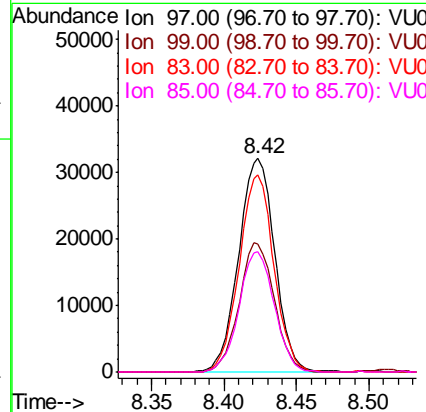
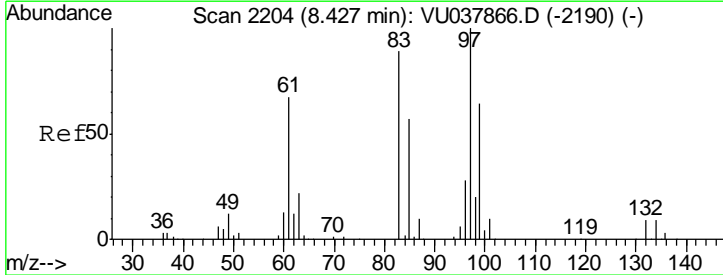
Instrument :
 MSVOA_U
 ClientSampled :

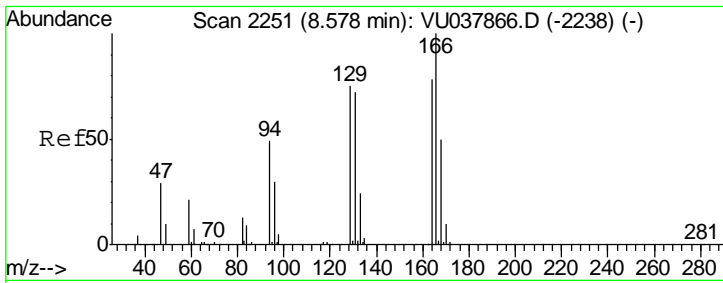
Tgt Ion	Resp	Lower	Upper
91	47363		
92	58.6	41.2	76.6



#45
 1,1,2-Trichloroethane
 Concen: 12.568 ug/L
 RT: 8.42 min Scan# 2203
 Delta R.T. -0.00 min
 Lab File: VU037881.D
 Acq: 24 Apr 2020 19:04

Tgt Ion	Resp	Lower	Upper
97	55603		
99	59.8	44.0	81.6
83	92.2	62.6	116.2
85	56.1	40.0	74.4

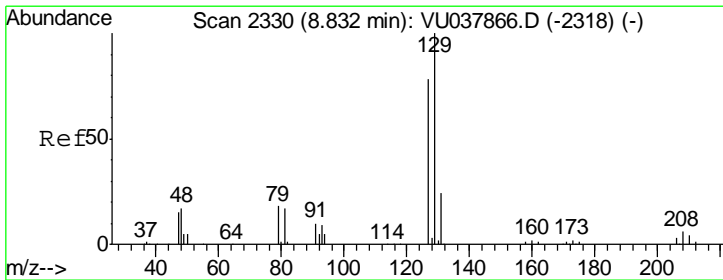
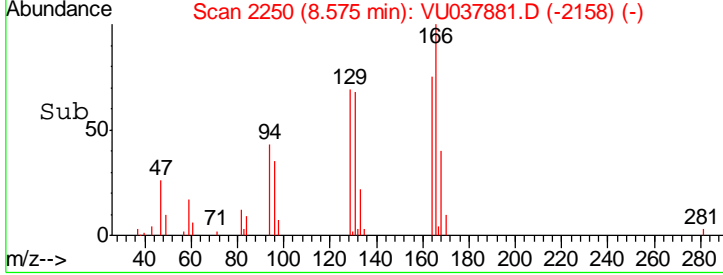
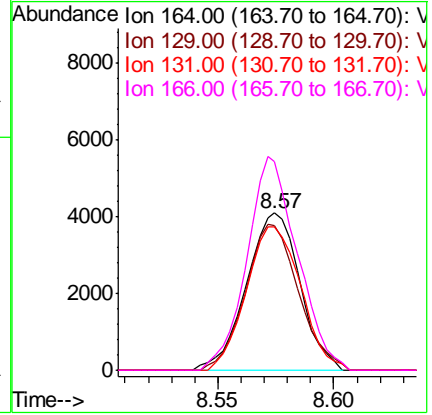
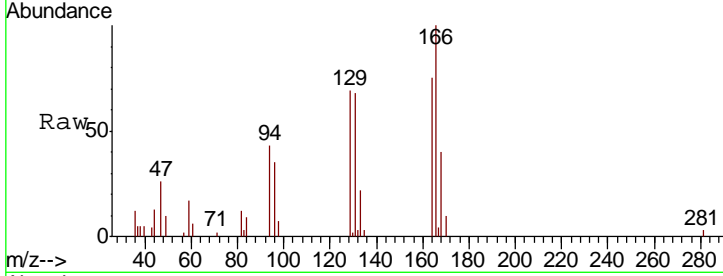




#46
 Tetrachloroethene
 Concen: 1.971 ug/L
 RT: 8.57 min Scan# 2250
 Delta R.T. -0.00 min
 Lab File: VU037881.D
 Acq: 24 Apr 2020 19:04

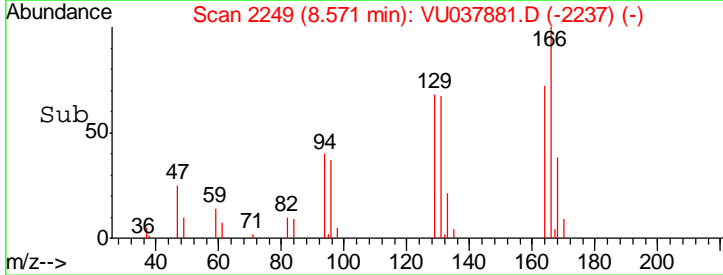
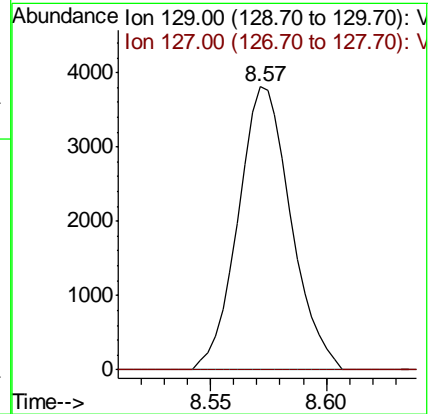
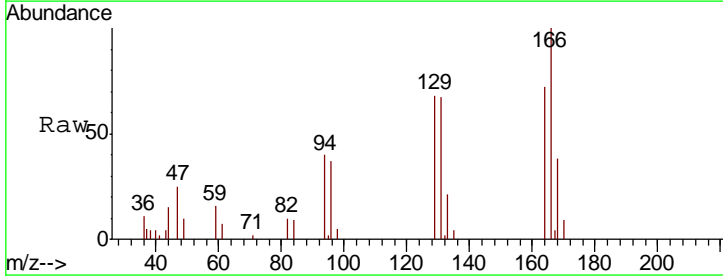
Instrument :
 MSVOA_U
 ClientSampled :

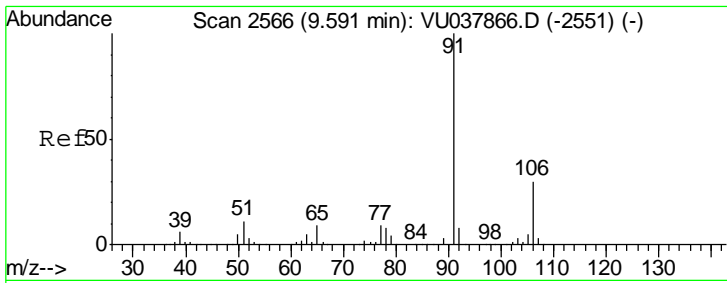
Tgt Ion	Resp	Lower	Upper
164	100		
129	91.9	67.3	125.1
131	91.0	64.8	120.4
166	133.0	88.5	164.4



#49
 Dibromochloromethane
 Concen: 1.306 ug/L
 RT: 8.57 min Scan# 2249
 Delta R.T. -0.26 min
 Lab File: VU037881.D
 Acq: 24 Apr 2020 19:04

Tgt Ion	Resp	Lower	Upper
129	100		
127	0.0	54.7	101.5#

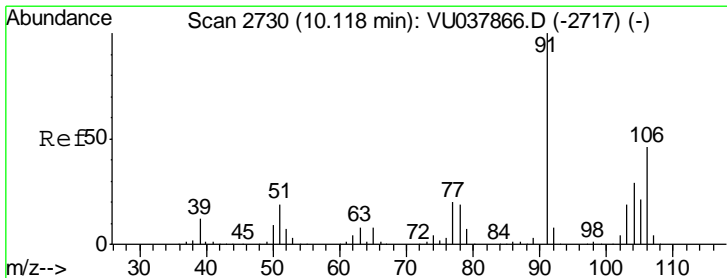
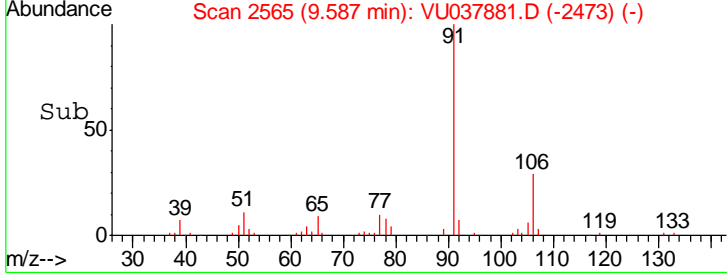
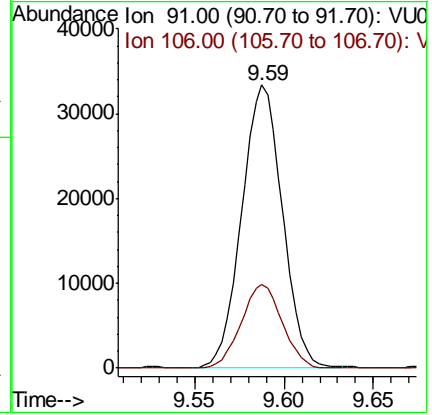
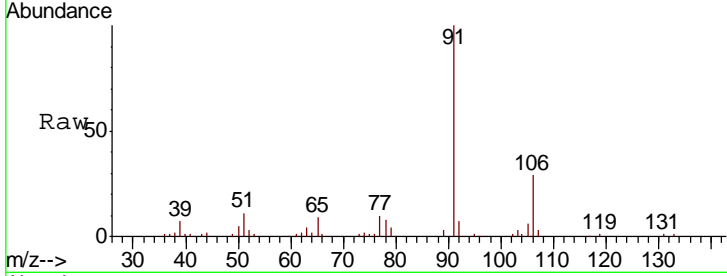




#52
Ethylbenzene
Concen: 2.443 ug/L
RT: 9.59 min Scan# 2565
Delta R.T. -0.00 min
Lab File: VU037881.D
Acq: 24 Apr 2020 19:04

Instrument :
MSVOA_U
ClientSampled :

Tgt Ion	Resp	Lower	Upper
91	100		
106	29.5	21.1	39.1



#54
o-xylene
Concen: 10.813 ug/L
RT: 10.11 min Scan# 2729
Delta R.T. -0.00 min
Lab File: VU037881.D
Acq: 24 Apr 2020 19:04

Tgt Ion	Resp	Lower	Upper
106	100		
91	221.6	150.6	279.6

