

Data Path : Z:\VOASRV\HPCHEM1\MSVOA U\DATA\VU042420\  
 Data File : VU037872.D  
 Acq On : 24 Apr 2020 15:40  
 Operator : JC/MD  
 Sample : L2395-06  
 Misc : 5.0mL/MSVOA U/WATER  
 ALS Vial : 1 Sample Multiplier: 1

Instrument :  
 MSVOA\_U  
 ClientSampleId :  
 C0D91

Quant Time: Apr 25 02:06:04 2020  
 Quant Method : Z:\VOASRV\HPCHEM1\MSVOA\_U\METHOD\SOMULM042320WMA.M  
 Quant Title : VOC Analysis  
 QLast Update : Sat Apr 25 01:13:34 2020  
 Response via : Initial Calibration

Internal Standards	R.T.	QIon	Response	Conc	Units	Dev(Min)
1) 1,4-Difluorobenzene	6.28	114	568826	50.00	ug/L	0.00
28) Chlorobenzene-d5	9.44	117	554092	50.00	ug/L	0.00
60) 1,4-Dichlorobenzene-d4	11.83	152	219794	50.00	ug/L	0.00

## System Monitoring Compounds

4) Vinyl Chloride-d3	1.61	65	234753	47.23	ug/L	0.00
Spiked Amount	50.000	Range	60 - 135	Recovery	=	94.46%
7) Chloroethane-d5	1.93	69	186829	48.50	ug/L	0.00
Spiked Amount	50.000	Range	70 - 130	Recovery	=	97.00%
11) 1,1-Dichloroethene-d2	2.59	63	296934	36.91	ug/L	0.00
Spiked Amount	50.000	Range	60 - 125	Recovery	=	73.82%
21) 2-Butanone-d5	4.66	46	391903	99.52	ug/L	0.00
Spiked Amount	100.000	Range	40 - 130	Recovery	=	99.52%
24) Chloroform-d	5.10	84	359883	47.54	ug/L	0.00
Spiked Amount	50.000	Range	70 - 125	Recovery	=	95.08%
26) 1,2-Dichloroethane-d4	5.74	65	253929	48.44	ug/L	0.00
Spiked Amount	50.000	Range	70 - 125	Recovery	=	96.88%
32) Benzene-d6	5.76	84	781665	49.89	ug/L	0.00
Spiked Amount	50.000	Range	70 - 125	Recovery	=	99.78%
36) 1,2-Dichloropropane-d6	6.72	67	264477	50.46	ug/L	0.00
Spiked Amount	50.000	Range	70 - 120	Recovery	=	100.92%
41) Toluene-d8	7.92	98	711821	49.43	ug/L	0.00
Spiked Amount	50.000	Range	80 - 120	Recovery	=	98.86%
43) trans-1,3-Dichloropropene-	8.20	79	129203	47.90	ug/L	0.00
Spiked Amount	50.000	Range	60 - 125	Recovery	=	95.80%
47) 2-Hexanone-d5	8.66	63	289992	101.65	ug/L	0.00
Spiked Amount	100.000	Range	45 - 130	Recovery	=	101.65%
57) 1,1,2,2-Tetrachloroethane-	10.77	84	355004	48.69	ug/L	0.00
Spiked Amount	50.000	Range	65 - 120	Recovery	=	97.38%
64) 1,2-Dichlorobenzene-d4	12.20	152	218607	51.11	ug/L	0.00
Spiked Amount	50.000	Range	80 - 120	Recovery	=	102.22%

## Target Compounds

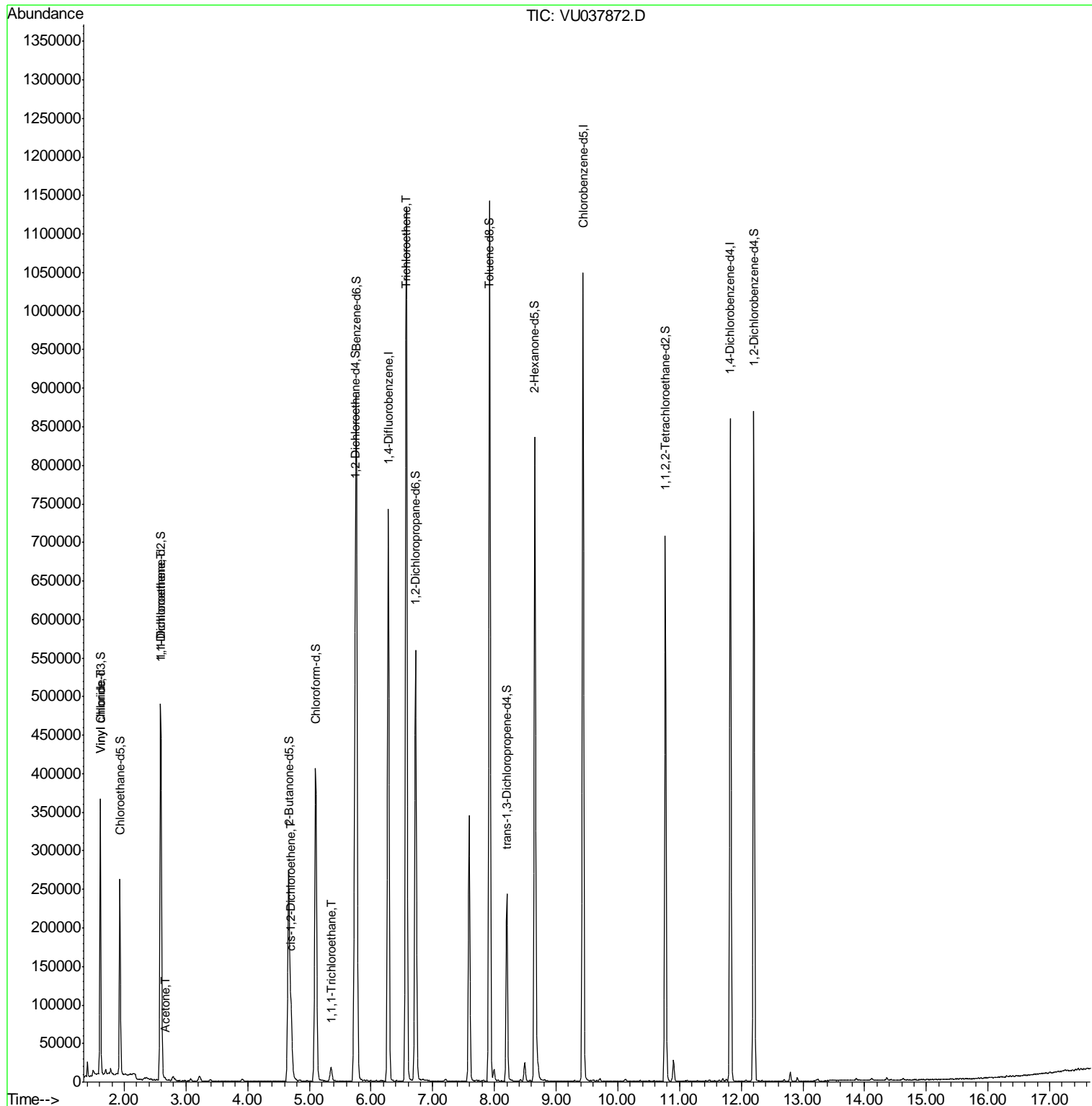
Target Compounds	R.T.	QIon	Response	Conc	Units	Ovalue
5) Vinyl chloride	1.62	62	7438	1.318	ug/L #	1
12) 1,1-Dichloroethene	2.60	96	19924	5.769	ug/L #	1
13) Acetone	2.66	43	4482	1.908	ug/L	89
20) cis-1,2-Dichloroethene	4.71	96	37534	8.878	ug/L	97
30) 1,1,1-Trichloroethane	5.35	97	13730	2.219	ug/L	95
34) Trichloroethene	6.57	95	382799	92.795	ug/L	98

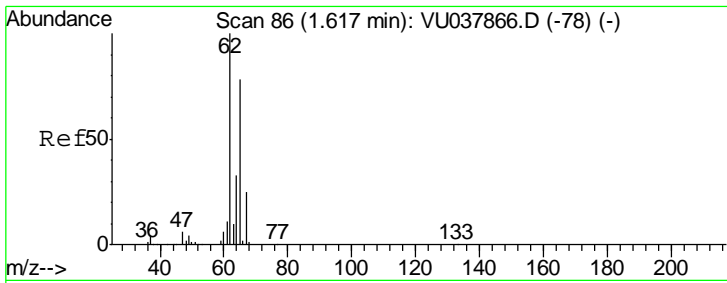
(#) = qualifier out of range (m) = manual integration (+) = signals summed

Data Path : Z:\VOASRV\HPCHEM1\MSVOA U\DATA\VU042420\  
 Data File : VU037872.D  
 Acq On : 24 Apr 2020 15:40  
 Operator : JC/MD  
 Sample : L2395-06  
 Misc : 5.0mL/MSVOA U/WATER  
 ALS Vial : 1 Sample Multiplier: 1

Instrument :  
 MSVOA\_U  
 ClientSampled :  
 C0D91

Quant Time: Apr 25 02:06:04 2020  
 Quant Method : Z:\VOASRV\HPCHEM1\MSVOA\_U\METHOD\SOMULM042320WMA.M  
 Quant Title : VOC Analysis  
 QLast Update : Sat Apr 25 01:13:34 2020  
 Response via : Initial Calibration

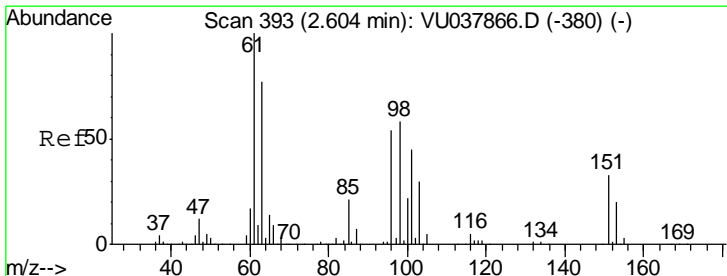
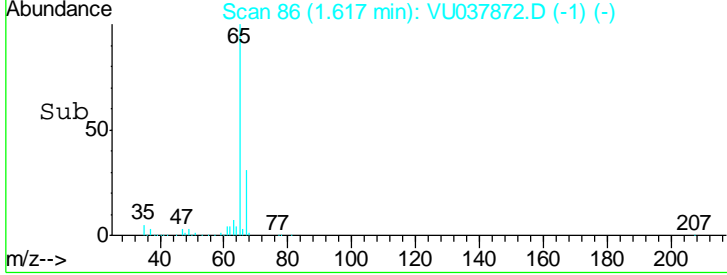
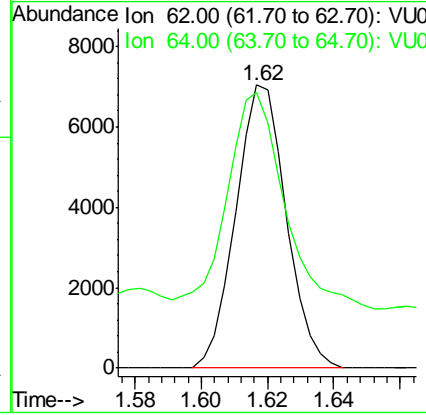
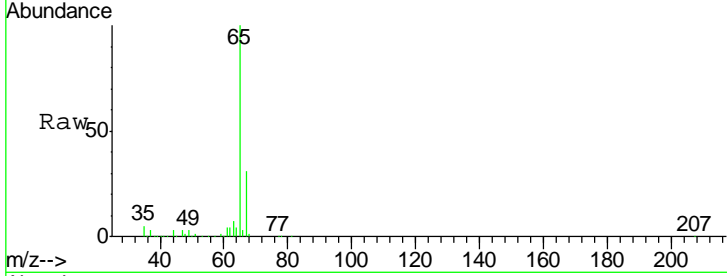




#5  
 Vinyl chloride  
 Concen: 1.318 ug/L  
 RT: 1.62 min Scan# 86  
 Delta R.T. 0.00 min  
 Lab File: VU037872.D  
 Acq: 24 Apr 2020 15:40

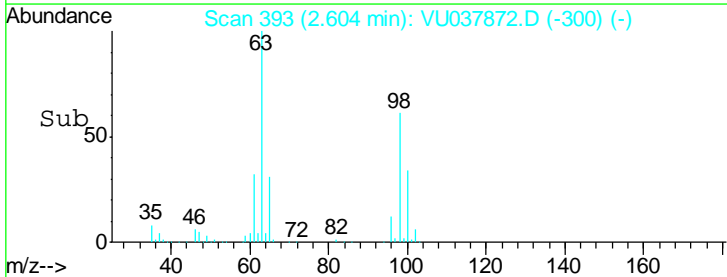
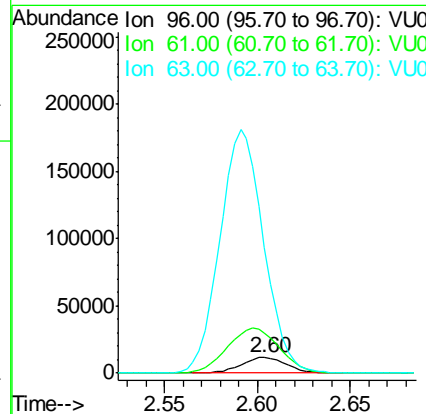
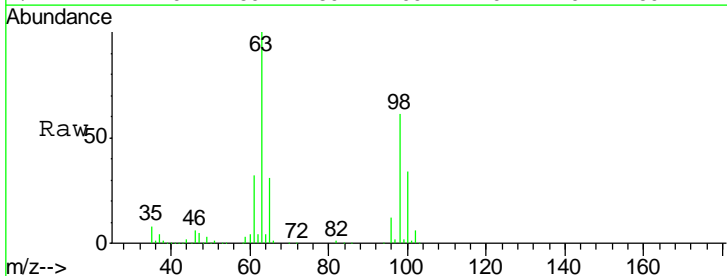
**Instrument :**  
 MSVOA\_U  
**ClientSampled :**  
 C0D91

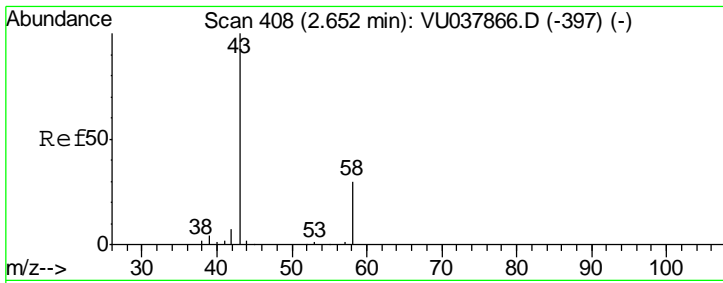
Tgt Ion	Resp	Lower	Upper
62	100		
64	97.6	23.2	43.0#



#12  
 1,1-Dichloroethene  
 Concen: 5.769 ug/L  
 RT: 2.60 min Scan# 393  
 Delta R.T. 0.00 min  
 Lab File: VU037872.D  
 Acq: 24 Apr 2020 15:40

Tgt Ion	Resp	Lower	Upper
96	100		
61	258.8	134.1	249.0#
63	810.6	96.5	179.1#

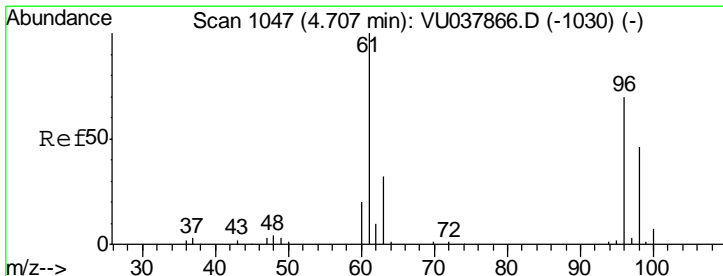
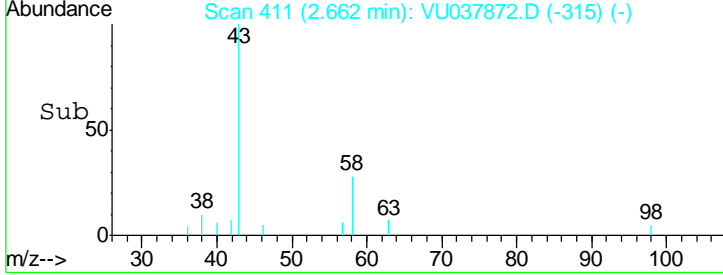
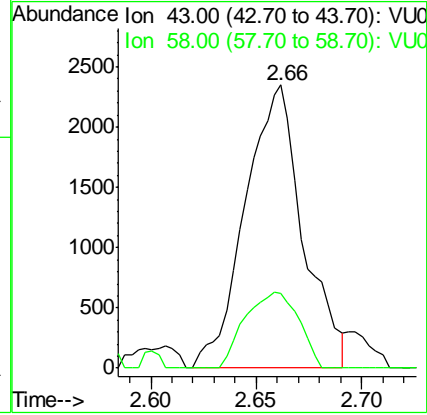
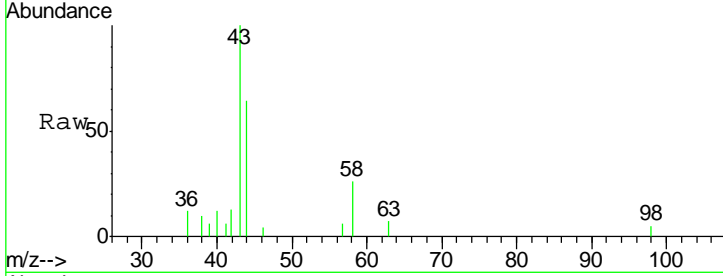




#13  
 Acetone  
 Concen: 1.908 ug/L  
 RT: 2.66 min Scan# 411  
 Delta R.T. 0.01 min  
 Lab File: VU037872.D  
 Acq: 24 Apr 2020 15:40

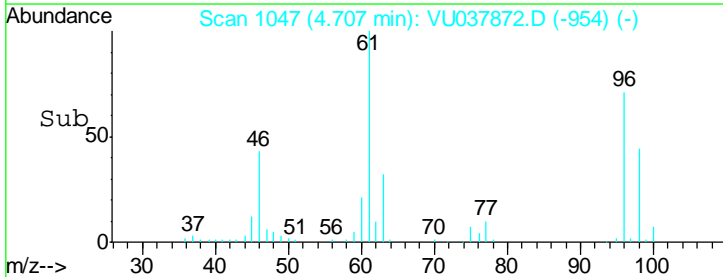
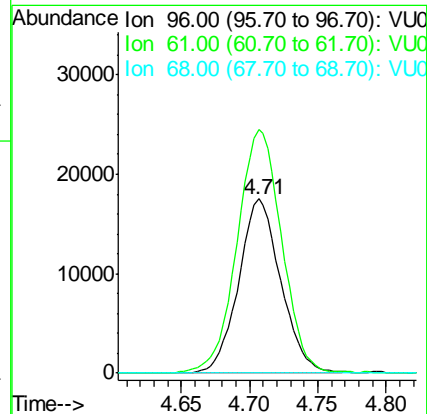
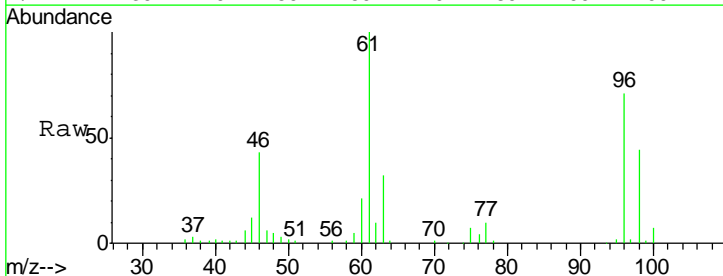
Instrument :  
 MSVOA\_U  
 ClientSampled :  
 C0D91

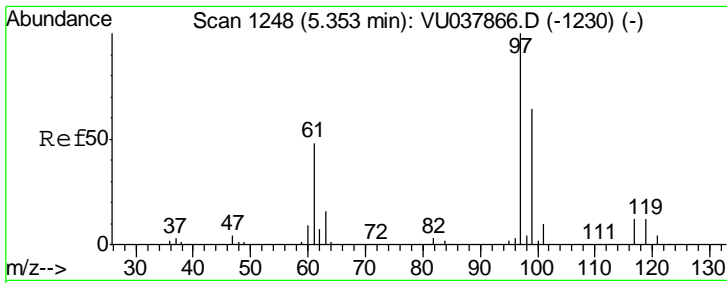
Tgt Ion	Resp	Lower	Upper
43	100		
58	24.9	0.0	62.0



#20  
 cis-1,2-Dichloroethene  
 Concen: 8.878 ug/L  
 RT: 4.71 min Scan# 1047  
 Delta R.T. 0.00 min  
 Lab File: VU037872.D  
 Acq: 24 Apr 2020 15:40

Tgt Ion	Resp	Lower	Upper
96	100		
61	139.9	100.4	186.4
68	0.0	0.0	0.0

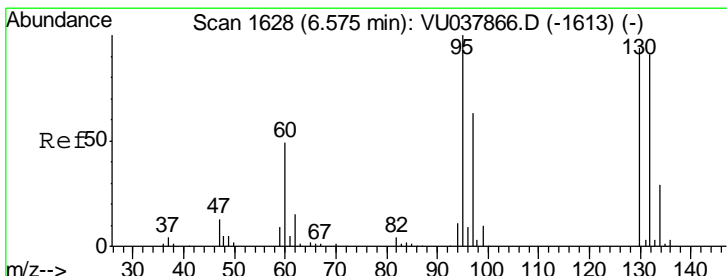
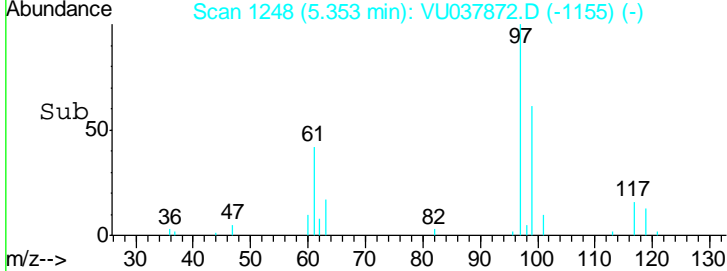
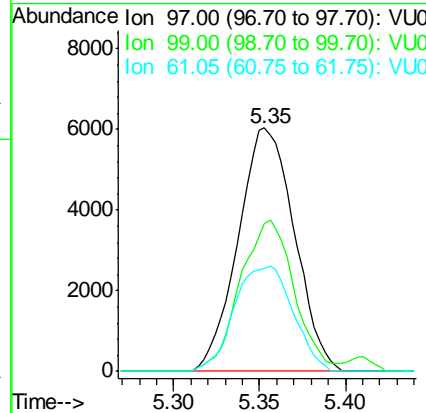
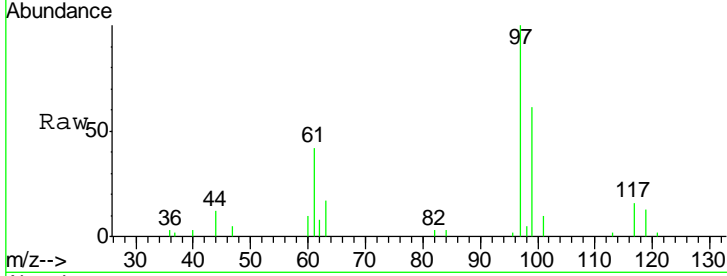




#30  
 1,1,1-Trichloroethane  
 Concen: 2.219 ug/L  
 RT: 5.35 min Scan# 1248  
 Delta R.T. 0.00 min  
 Lab File: VU037872.D  
 Acq: 24 Apr 2020 15:40

Instrument : MSVOA\_U  
 ClientSampled : C0D91

Tgt Ion	Resp	Lower	Upper
97	13730		
99	59.4	50.7	76.1
61	44.8	38.9	58.3



#34  
 Trichloroethene  
 Concen: 92.795 ug/L  
 RT: 6.57 min Scan# 1627  
 Delta R.T. -0.00 min  
 Lab File: VU037872.D  
 Acq: 24 Apr 2020 15:40

Tgt Ion	Resp	Lower	Upper
95	382799		
97	62.7	44.4	82.5
132	90.7	65.0	120.6
130	96.7	65.5	121.7

