

Data Path : Z:\VOASRV\HPCHEM1\MSVOA U\DATA\VU042420\  
 Data File : VU037868.D  
 Acq On : 24 Apr 2020 14:09  
 Operator : JC/MD  
 Sample : L2395-02 40X  
 Misc : 5.0mL/MSVOA U/WATER  
 ALS Vial : 1 Sample Multiplier: 1

Instrument :  
 MSVOA\_U  
 ClientSampleId :  
 C0D87

Integration Parameters: LSCINT.P

Integrator: RTE  
 Smoothing : OFF  
 Sampling : 1  
 Start Thrs: 0.2  
 Stop Thrs : 0

Filtering: 5  
 Min Area: 0 % of largest Peak  
 Max Peaks: 100  
 Peak Location: TOP

If leading or trailing edge < 100 prefer < Baseline drop else tangent >  
 Peak separation: 5

Method : Z:\VOASRV\HPCHEM1\MSVOA\_U\METHOD\SOMULM042320WMA.M  
 Title : VOC Analysis

Signal : TIC

peak #	R.T. min	first scan	max scan	last scan	PK TY	peak height	corr. area	corr. % max.	% of total
1	1.613	77	85	96	rBV	301820	324958	1.37%	0.731%
2	1.928	175	183	199	rVB	213563	289474	1.22%	0.651%
3	2.600	376	392	412	rBV4	935292	1800623	7.61%	4.049%
4	2.819	454	460	472	rVB2	5058	8656	0.04%	0.019%
5	3.076	526	540	563	rBV	330027	632422	2.67%	1.422%
6	3.221	572	585	599	rVB2	9159	21421	0.09%	0.048%
7	3.324	615	617	622	rBV3	378	354	0.00%	0.001%
8	3.372	628	632	633	rBV3	711	440	0.00%	0.001%
9	3.430	647	650	656	rBV	630	502	0.00%	0.001%
10	3.539	681	684	688	rBV	421	298	0.00%	0.001%
11	3.716	735	739	744	rVB4	409	415	0.00%	0.001%
12	3.742	744	747	751	rBV	339	293	0.00%	0.001%
13	3.909	786	799	814	rVB	15508	34802	0.15%	0.078%
14	3.973	814	819	822	rBV2	319	282	0.00%	0.001%
15	4.282	908	915	916	rBV2	355	275	0.00%	0.001%
16	4.549	995	998	1004	rVB2	534	400	0.00%	0.001%
17	4.668	1018	1035	1041	rBV	226701	505562	2.14%	1.137%
18	5.015	1134	1143	1144	rBV4	808	966	0.00%	0.002%
19	5.102	1152	1170	1189	rBV	337338	737985	3.12%	1.660%
20	5.356	1230	1249	1274	rBV	841395	1897572	8.02%	4.267%
21	5.446	1275	1277	1279	rVB2	857	364	0.00%	0.001%
22	5.481	1284	1288	1289	rBV3	707	535	0.00%	0.001%
23	5.597	1322	1324	1329	rVB3	589	412	0.00%	0.001%
24	5.655	1339	1342	1346	rVB2	517	476	0.00%	0.001%
25	5.681	1346	1350	1352	rBV2	513	367	0.00%	0.001%
26	5.761	1352	1375	1393	rBV2	750420	1969113	8.33%	4.428%
27	5.944	1429	1432	1438	rVB4	827	641	0.00%	0.001%
28	6.073	1466	1472	1482	rVB6	1596	2733	0.01%	0.006%
29	6.137	1487	1492	1495	rBV4	768	943	0.00%	0.002%
30	6.282	1522	1537	1556	rBV	878899	1634707	6.91%	3.676%
31	6.574	1610	1628	1659	rBV	12842417	23650188	100.00%	53.185%
32	6.722	1662	1674	1697	rVB	466871	922874	3.90%	2.075%
33	6.996	1754	1759	1760	rBV3	780	689	0.00%	0.002%
34	7.156	1805	1809	1813	rBV2	352	285	0.00%	0.001%

Data Path : Z:\VOASRV\HPCHEM1\MSVOA U\DATA\VU042420\  
 Data File : VU037868.D  
 Acq On : 24 Apr 2020 14:09  
 Operator : JC/MD  
 Sample : L2395-02 40X  
 Misc : 5.0mL/MSVOA U/WATER  
 ALS Vial : 1 Sample Multiplier: 1

Instrument :  
 MSVOA\_U  
 ClientSampleId :  
 C0D87

## Integration Parameters: LSCINT.P

Integrator: RTE  
 Smoothing : OFF  
 Sampling : 1  
 Start Thrs: 0.2  
 Stop Thrs : 0

Filtering: 5  
 Min Area: 0 % of largest Peak  
 Max Peaks: 100  
 Peak Location: TOP

If leading or trailing edge < 100 prefer < Baseline drop else tangent >  
 Peak separation: 5

Method : Z:\VOASRV\HPCHEM1\MSVOA\_U\METHOD\SOMULM042320WMA.M  
 Title : VOC Analysis

35	7.208	1818	1825	1831	rVV7	1935	2743	0.01%	0.006%
36	7.256	1834	1840	1842	rBV3	446	427	0.00%	0.001%
37	7.333	1859	1864	1866	rBV3	347	287	0.00%	0.001%
38	7.349	1866	1869	1873	rVB3	371	276	0.00%	0.001%
39	7.446	1894	1899	1904	rVB4	585	621	0.00%	0.001%
40	7.471	1904	1907	1911	rBV	472	312	0.00%	0.001%
41	7.539	1925	1928	1929	rBV2	518	311	0.00%	0.001%
42	7.594	1931	1945	1969	rVB	288017	496001	2.10%	1.115%
43	7.822	2006	2016	2023	rBV5	4798	8051	0.03%	0.018%
44	7.925	2033	2048	2062	rBV	945599	1606997	6.79%	3.614%
45	8.066	2089	2092	2097	rVB4	462	412	0.00%	0.001%
46	8.205	2120	2135	2154	rVV	206528	345435	1.46%	0.777%
47	8.362	2182	2184	2186	rBV	521	289	0.00%	0.001%
48	8.426	2194	2204	2217	rBV3	16753	28342	0.12%	0.064%
49	8.494	2220	2225	2226	rBV3	693	582	0.00%	0.001%
50	8.574	2242	2250	2259	rBV6	3662	5406	0.02%	0.012%
51	8.658	2262	2276	2308	rBV	671103	1189434	5.03%	2.675%
52	8.809	2321	2323	2327	rVB3	856	454	0.00%	0.001%
53	8.944	2361	2365	2367	rBV4	957	858	0.00%	0.002%
54	9.124	2418	2421	2424	rVV	402	272	0.00%	0.001%
55	9.143	2424	2427	2433	rVV3	427	365	0.00%	0.001%
56	9.188	2433	2441	2449	rVB5	2360	3789	0.02%	0.009%
57	9.346	2486	2490	2494	rVB2	533	515	0.00%	0.001%
58	9.369	2494	2497	2500	rBV	427	291	0.00%	0.001%
59	9.439	2504	2519	2547	rBV	1010239	1654343	7.00%	3.720%
60	9.558	2547	2556	2560	rVV7	7767	12386	0.05%	0.028%
61	9.590	2561	2566	2575	rVB	13383	19533	0.08%	0.044%
62	9.626	2575	2577	2581	rVB3	452	378	0.00%	0.001%
63	9.664	2581	2589	2591	rBV5	939	1105	0.00%	0.002%
64	9.713	2593	2604	2618	rVB	74837	123974	0.52%	0.279%
65	9.780	2618	2625	2628	rBV4	752	1036	0.00%	0.002%
66	10.121	2719	2731	2749	rBV	67123	111056	0.47%	0.250%
67	10.198	2753	2755	2766	rVB2	418	627	0.00%	0.001%
68	10.246	2766	2770	2774	rBV2	368	443	0.00%	0.001%
69	10.269	2774	2777	2783	rBV	290	328	0.00%	0.001%
70	10.343	2796	2800	2804	rVV	433	466	0.00%	0.001%
71	10.368	2804	2808	2811	rVV2	567	432	0.00%	0.001%

Data Path : Z:\VOASRV\HPCHEM1\MSVOA U\DATA\VU042420\  
 Data File : VU037868.D  
 Acq On : 24 Apr 2020 14:09  
 Operator : JC/MD  
 Sample : L2395-02 40X  
 Misc : 5.0mL/MSVOA U/WATER  
 ALS Vial : 1 Sample Multiplier: 1

Instrument :  
 MSVOA\_U  
 ClientSampleId :  
 C0D87

## Integration Parameters: LSCINT.P

Integrator: RTE  
 Smoothing : OFF Filtering: 5  
 Sampling : 1 Min Area: 0 % of largest Peak  
 Start Thrs: 0.2 Max Peaks: 100  
 Stop Thrs : 0 Peak Location: TOP

If leading or trailing edge < 100 prefer < Baseline drop else tangent >  
 Peak separation: 5

Method : Z:\VOASRV\HPCHEM1\MSVOA\_U\METHOD\SOMULM042320WMA.M  
 Title : VOC Analysis

72	10.500	2842	2849	2859	rBB2	4068	5592	0.02%	0.013%
73	10.565	2865	2869	2872	rBV	466	389	0.00%	0.001%
74	10.655	2895	2897	2902	rVB	516	367	0.00%	0.001%
75	10.774	2921	2934	2952	rBV	503829	776812	3.28%	1.747%
76	10.838	2952	2954	2957	rVV2	563	350	0.00%	0.001%
77	10.873	2960	2965	2969	rBV3	292	351	0.00%	0.001%
78	10.902	2969	2974	2979	rBV2	474	472	0.00%	0.001%
79	11.182	3058	3061	3063	rBV	401	305	0.00%	0.001%
80	11.333	3106	3108	3115	rVB	704	559	0.00%	0.001%
81	11.368	3115	3119	3121	rBV	378	327	0.00%	0.001%
82	11.484	3151	3155	3163	rVB3	1621	2028	0.01%	0.0005%
83	11.539	3167	3172	3173	rBV3	1772	1531	0.01%	0.0003%
84	11.642	3202	3204	3207	rBV2	370	263	0.00%	0.001%
85	11.764	3230	3242	3248	rVV7	5427	9081	0.04%	0.020%
86	11.828	3248	3262	3281	rVV	1294672	2059742	8.71%	4.632%
87	11.983	3306	3310	3313	rBV2	692	515	0.00%	0.001%
88	12.044	3325	3329	3332	rBV3	426	364	0.00%	0.001%
89	12.208	3363	3380	3399	rBV	900145	1451809	6.14%	3.265%
90	12.339	3418	3421	3423	rBV3	920	518	0.00%	0.001%
91	12.391	3434	3437	3443	rVB	632	501	0.00%	0.001%
92	12.616	3504	3507	3512	rVB3	576	429	0.00%	0.001%
93	12.645	3513	3516	3520	rBV3	479	460	0.00%	0.001%
94	12.719	3537	3539	3542	rBV2	482	308	0.00%	0.001%
95	12.973	3616	3618	3623	rVB2	633	412	0.00%	0.001%
96	13.021	3624	3633	3640	rBV6	6264	9657	0.04%	0.022%
97	13.243	3693	3702	3716	rVB3	19500	29857	0.13%	0.067%
98	13.873	3891	3898	3907	rVB8	4504	6882	0.03%	0.015%
99	14.121	3969	3975	3983	rVB5	3802	5213	0.02%	0.012%
100	14.368	4042	4052	4063	rBV2	25477	42363	0.18%	0.095%

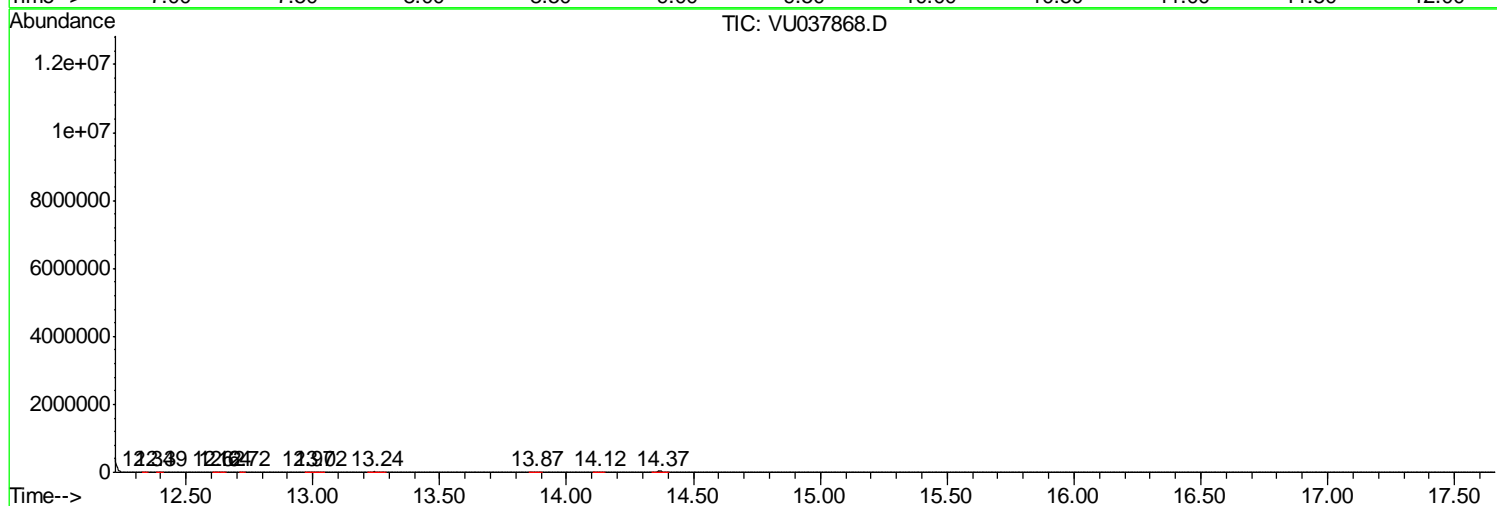
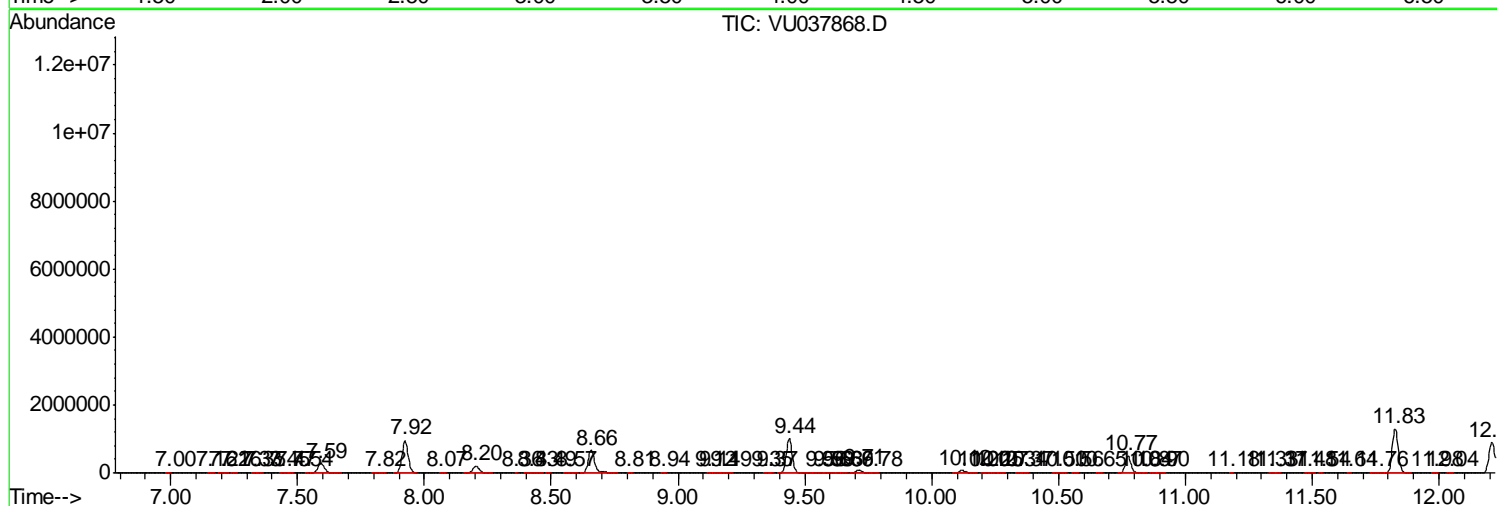
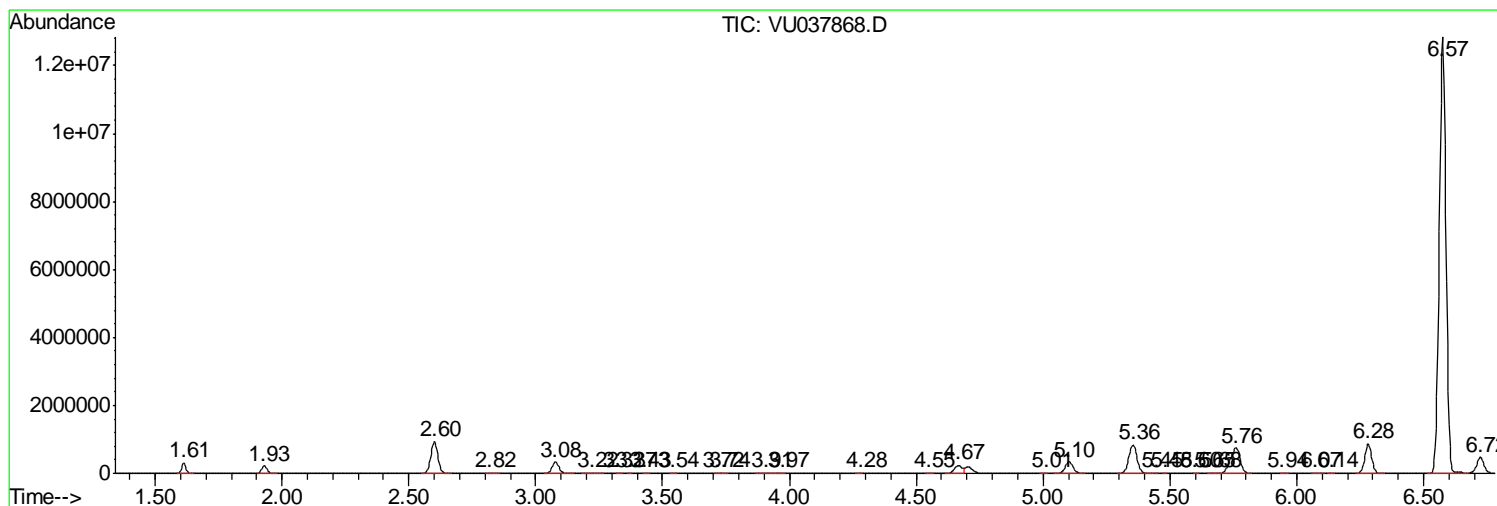
Sum of corrected areas: 44468061

Data Path : Z:\VOASRV\HPCHEM1\MSVOA U\DATA\VU042420\  
 Data File : VU037868.D  
 Acq On : 24 Apr 2020 14:09  
 Operator : JC/MD  
 Sample : L2395-02 40X  
 Misc : 5.0mL/MSVOA U/WATER  
 ALS Vial : 1 Sample Multiplier: 1

**Instrument :**  
 MSVOA\_U  
**ClientSampled :**  
 C0D87

Quant Method : Z:\VOASRV\HPCHEM1\MSVOA\_U\METHOD\SOMULM042320WMA.M  
 Quant Title : VOC Analysis

TIC Library : C:\DATABASE\NIST11.L  
 TIC Integration Parameters: LSCINT.P



Data Path : Z:\VOASRV\HPCHEM1\MSVOA\_U\DATA\VU042420\  
Data File : VU037868.D  
Acq On : 24 Apr 2020 14:09  
Operator : JC/MD  
Sample : L2395-02 40X  
Misc : 5.0mL/MSVOA\_U/WATER  
ALS Vial : 1 Sample Multiplier: 1

Instrument :  
MSVOA\_U  
ClientSampleId :  
C0D87

Quant Method : Z:\VOASRV\HPCHEM1\MSVOA\_U\METHOD\SOMULM042320WMA.M  
Quant Title : VOC Analysis

TIC Library : C:\DATABASE\NIST11.L  
TIC Integration Parameters: LSCINT.P

No Library Search Compounds Detected

\*\*\*\*\*

Data Path : Z:\VOASRV\HPCHEM1\MSVOA\_U\DATA\VU042420\  
Data File : VU037868.D  
Acq On : 24 Apr 2020 14:09  
Operator : JC/MD  
Sample : L2395-02 40X  
Misc : 5.0mL/MSVOA\_U/WATER  
ALS Vial : 1 Sample Multiplier: 1

Instrument :  
MSVOA\_U  
ClientSampleId :  
C0D87

Quant Method : Z:\VOASRV\HPCHEM1\MSVOA\_U\METHOD\SOMULM042320WMA.M  
Quant Title : VOC Analysis

TIC Library : C:\DATABASE\NIST11.L  
TIC Integration Parameters: LSCINT.P

TIC Top Hit name	RT	EstConc	Units	Response	--Internal Standard--			
					#	RT	Resp	Conc

---