

Data Path : Z:\voasrv\HPCHEM1\MSVOA\_U\Data\VU042423\  
 Data File : VU053841.D  
 Acq On : 24 Apr 2023 14:00  
 Operator : JC/MD  
 Sample : VSTDICV005  
 Misc : 25.0mL/MSVOA\_U/WATER  
 ALS Vial : 9 Sample Multiplier: 1

Instrument :  
 MSVOA\_U  
 ClientSampleId :  
 VICV025

Quant Time: Apr 25 04:52:20 2023  
 Quant Method : Z:\voasrv\HPCHEM1\MSVOA\_U\Method\SFAMUTR042423WMA.M  
 Quant Title : TRACE VOA SFAM1.0  
 QLast Update : Tue Apr 25 04:42:45 2023  
 Response via : Initial Calibration

Compound	R.T.	QIon	Response	Conc	Units	Dev(Min)
Internal Standards						
1) 1,4-Difluorobenzene	6.247	114	168455	5.000	ug/L	0.00
28) Chlorobenzene-d5	9.414	117	159729	5.000	ug/L	0.00
58) 1,4-Dichlorobenzene-d4	11.809	152	85825	5.000	ug/L	0.00
System Monitoring Compounds						
4) Vinyl Chloride-d3	1.598	65	45561	4.440	ug/L	0.00
Spiked Amount	5.000	Range 40 - 130	Recovery	=	88.800%	
7) Chloroethane-d5	1.913	69	38498	4.471	ug/L	0.00
Spiked Amount	5.000	Range 65 - 130	Recovery	=	89.400%	
11) 1,1-Dichloroethene-d2	2.565	65	18730	4.436	ug/L	0.00
Spiked Amount	5.000	Range 60 - 125	Recovery	=	88.800%	
20) 2-Butanone-d5	4.633	46	84690	45.065	ug/L	0.00
Spiked Amount	50.000	Range 40 - 130	Recovery	=	90.140%	
24) Chloroform-d	5.060	84	88303	4.567	ug/L	0.00
Spiked Amount	5.000	Range 70 - 125	Recovery	=	91.400%	
26) 1,2-Dichloroethane-d4	5.700	65	40268	4.507	ug/L	0.00
Spiked Amount	5.000	Range 70 - 130	Recovery	=	90.200%	
32) Benzene-d6	5.723	84	175462	4.663	ug/L	0.00
Spiked Amount	5.000	Range 70 - 125	Recovery	=	93.200%	
36) 1,2-Dichloropropane-d6	6.687	67	52462	4.609	ug/L	0.00
Spiked Amount	5.000	Range 60 - 140	Recovery	=	92.200%	
41) Toluene-d8	7.893	98	165312	4.707	ug/L	0.00
Spiked Amount	5.000	Range 70 - 130	Recovery	=	94.200%	
43) trans-1,3-Dichloroprop...	8.176	79	20548	4.590	ug/L	0.00
Spiked Amount	5.000	Range 55 - 130	Recovery	=	91.800%	
46) 2-Hexanone-d5	8.629	63	73626	46.470	ug/L	0.00
Spiked Amount	50.000	Range 45 - 130	Recovery	=	92.940%	
56) 1,1,2,2-Tetrachloroeth...	10.752	84	40919	4.448	ug/L	0.00
Spiked Amount	5.000	Range 65 - 120	Recovery	=	89.000%	
66) 1,2-Dichlorobenzene-d4	12.189	152	58068	4.218	ug/L	0.00
Spiked Amount	5.000	Range 80 - 120	Recovery	=	84.400%	
Target Compounds						
2) Dichlorodifluoromethane	1.385	85	70336	5.628	ug/L	96
3) Chloromethane	1.520	50	66335	5.466	ug/L	100
5) Vinyl chloride	1.604	62	80438	5.745	ug/L	97
6) Bromomethane	1.858	94	51347	5.635	ug/L	93
8) Chloroethane	1.935	64	47194	5.400	ug/L	99
9) Trichlorofluoromethane	2.138	101	112843	5.458	ug/L	100
10) 1,1,2-Trichloro-1,2,2-...	2.581	101	66248	5.514	ug/L	99
12) 1,1-Dichloroethene	2.578	96	57582	5.434	ug/L	94
13) Acetone	2.646	43	74173	48.671	ug/L	100
14) Carbon disulfide	2.794	76	158651	5.464	ug/L	100
15) Methyl Acetate	2.954	43	17623	5.358	ug/L	99
16) Methylene chloride	3.044	84	64083	4.432	ug/L	97
17) Methyl tert-butyl Ether	3.360	73	127398	5.550	ug/L	100
18) trans-1,2-Dichloroethene	3.353	96	57757	5.394	ug/L	95
19) 1,1-Dichloroethane	3.868	63	109814	5.667	ug/L	98
21) 2-Butanone	4.710	43	115013	54.520	ug/L	99
22) cis-1,2-Dichloroethene	4.662	96	66437	5.500	ug/L	96
23) Bromochloromethane	4.970	128	30144	5.608	ug/L	98
25) Chloroform	5.083	83	119746	5.690	ug/L	100

Data Path : Z:\voasrv\HPCHEM1\MSVOA\_U\Data\VU042423\  
 Data File : VU053841.D  
 Acq On : 24 Apr 2023 14:00  
 Operator : JC/MD  
 Sample : VSTDICV005  
 Misc : 25.0mL/MSVOA\_U/WATER  
 ALS Vial : 9 Sample Multiplier: 1

Instrument :  
 MSVOA\_U  
 ClientSampleId :  
 VICV025

Quant Time: Apr 25 04:52:20 2023  
 Quant Method : Z:\voasrv\HPCHEM1\MSVOA\_U\Method\SFAMUTR042423WMA.M  
 Quant Title : TRACE VOA SFAM1.0  
 QLast Update : Tue Apr 25 04:42:45 2023  
 Response via : Initial Calibration

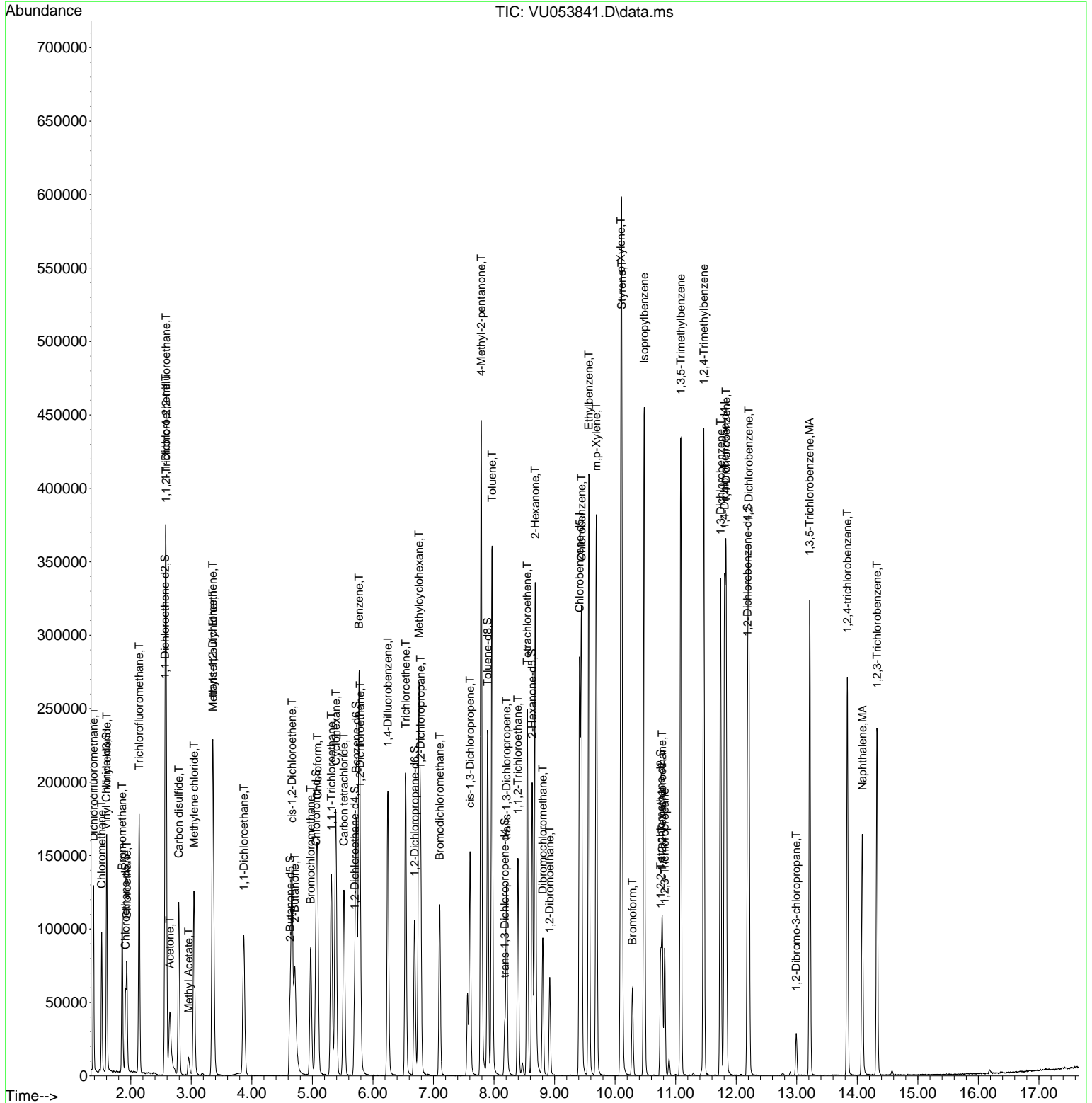
Compound	R.T.	QIon	Response	Conc	Units	Dev(Min)
27) 1,2-Dichloroethane	5.790	62	66292	5.495	ug/L	97
29) 1,1,1-Trichloroethane	5.314	97	102549	5.711	ug/L	98
30) Cyclohexane	5.385	56	91237	5.655	ug/L	99
31) Carbon tetrachloride	5.520	117	88025	5.640	ug/L	95
33) Benzene	5.771	78	254177	5.645	ug/L	100
34) Trichloroethene	6.540	95	70340	5.733	ug/L	98
35) Methylcyclohexane	6.761	83	109101	5.757	ug/L	98
37) 1,2-Dichloropropane	6.787	63	63797	5.711	ug/L	98
38) Bromodichloromethane	7.102	83	78680	5.635	ug/L	100
39) cis-1,3-Dichloropropene	7.604	75	94124	5.588	ug/L	100
40) 4-Methyl-2-pentanone	7.787	43	281805	55.926	ug/L	99
42) Toluene	7.967	91	273382	5.726	ug/L	99
44) trans-1,3-Dichloropropene	8.205	75	77563	5.694	ug/L	95
45) 1,1,2-Trichloroethane	8.395	97	47582	5.683	ug/L	97
47) Tetrachloroethene	8.549	164	54897	5.645	ug/L	98
48) 2-Hexanone	8.681	43	203404	53.108	ug/L	99
49) Dibromochloromethane	8.806	129	50020	5.642	ug/L	99
50) 1,2-Dibromoethane	8.919	107	45096	5.822	ug/L	100
51) Chlorobenzene	9.443	112	178491	5.506	ug/L	99
52) Ethylbenzene	9.565	91	299400	5.710	ug/L	98
53) m,p-Xylene	9.691	106	117169	5.832	ug/L	98
54) o-Xylene	10.096	106	114274	5.895	ug/L	100
55) Styrene	10.112	104	184992	5.833	ug/L	99
57) 1,1,2,2-Tetrachloroethane	10.777	83	53582	5.368	ug/L	100
59) Bromoform	10.285	173	27335	5.601	ug/L	99
60) Isopropylbenzene	10.481	105	303320	5.877	ug/L	100
61) 1,2,3-Trichloropropane	10.819	75	37032	5.596	ug/L	98
62) 1,3,5-Trimethylbenzene	11.083	105	242141	5.772	ug/L	99
63) 1,2,4-Trimethylbenzene	11.465	105	248377	5.851	ug/L	100
64) 1,3-Dichlorobenzene	11.742	146	144920	5.619	ug/L	99
65) 1,4-Dichlorobenzene	11.832	146	141942	5.447	ug/L	98
67) 1,2-Dichlorobenzene	12.208	146	128511	5.396	ug/L	99
68) 1,2-Dibromo-3-chloropr...	12.989	75	7245	5.312	ug/L	89
69) 1,3,5-Trichlorobenzene	13.214	180	100308	5.432	ug/L	98
70) 1,2,4-trichlorobenzene	13.835	180	83535	4.969	ug/L	98
71) Naphthalene	14.083	128	139056	4.679	ug/L	100
72) 1,2,3-Trichlorobenzene	14.327	180	72735	4.849	ug/L	99

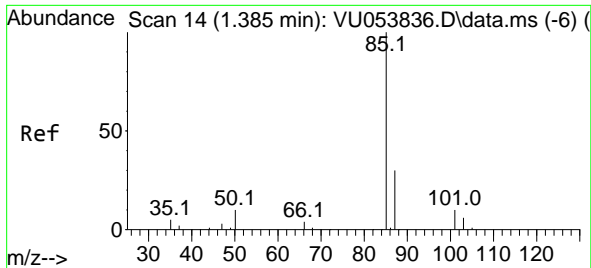
(#) = qualifier out of range (m) = manual integration (+) = signals summed

Data Path : Z:\voasrv\HPCHEM1\MSVOA\_U\Data\VU042423\  
 Data File : VU053841.D  
 Acq On : 24 Apr 2023 14:00  
 Operator : JC/MD  
 Sample : VSTDICV005  
 Misc : 25.0mL/MSVOA\_U/WATER  
 ALS Vial : 9 Sample Multiplier: 1

Instrument :  
 MSVOA\_U  
 ClientSampleId :  
 VICV025

Quant Time: Apr 25 04:52:20 2023  
 Quant Method : Z:\voasrv\HPCHEM1\MSVOA\_U\Method\SFAMUTR042423WMA.M  
 Quant Title : TRACE VOA SFAM1.0  
 QLast Update : Tue Apr 25 04:42:45 2023  
 Response via : Initial Calibration

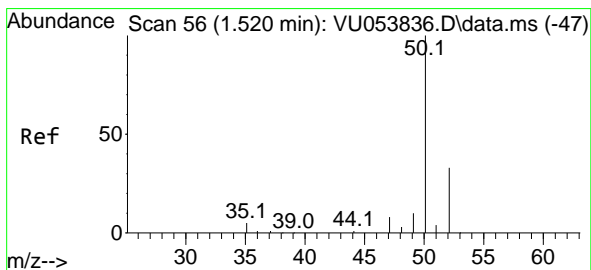
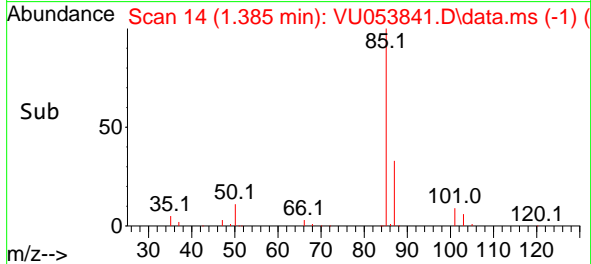
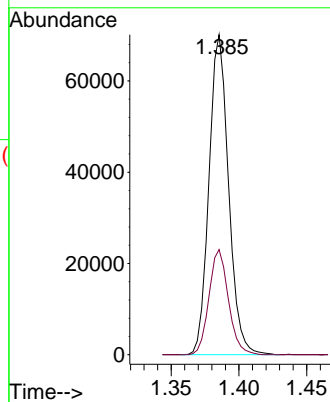
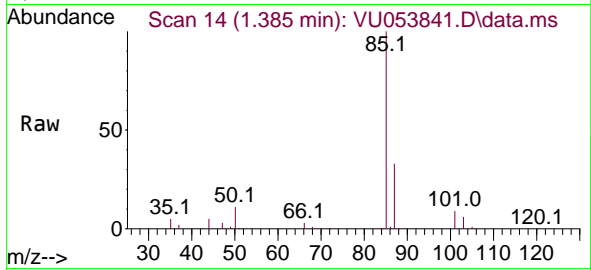




#2  
 Dichlorodifluoromethane  
 Concen: 5.628 ug/L  
 RT: 1.385 min Scan# 14  
 Delta R.T. 0.000 min  
 Lab File: VU053841.D  
 Acq: 24 Apr 2023 14:00

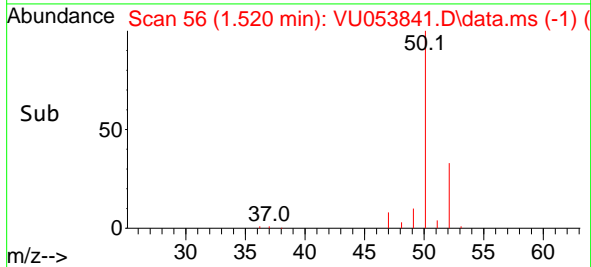
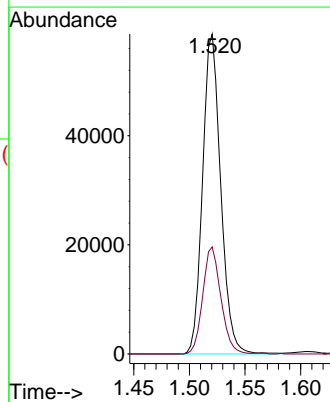
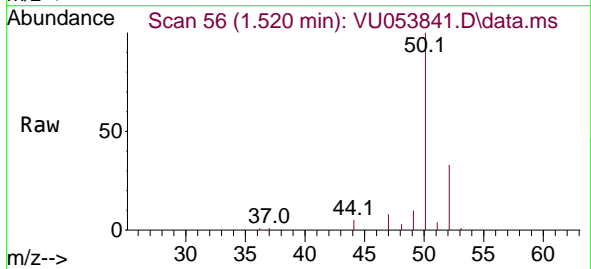
Instrument : MSVOA\_U  
 ClientSampleId : VICV025

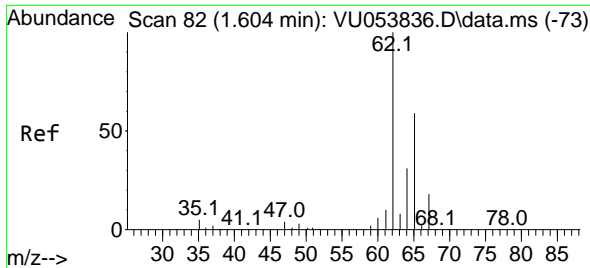
Tgt Ion: 85 Resp: 70336  
 Ion Ratio Lower Upper  
 85 100  
 87 32.6 24.5 36.7



#3  
 Chloromethane  
 Concen: 5.466 ug/L  
 RT: 1.520 min Scan# 56  
 Delta R.T. 0.000 min  
 Lab File: VU053841.D  
 Acq: 24 Apr 2023 14:00

Tgt Ion: 50 Resp: 66335  
 Ion Ratio Lower Upper  
 50 100  
 52 33.5 23.4 43.6

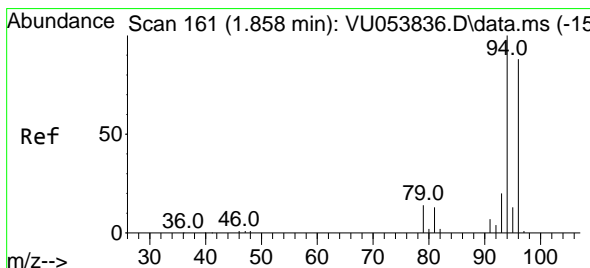
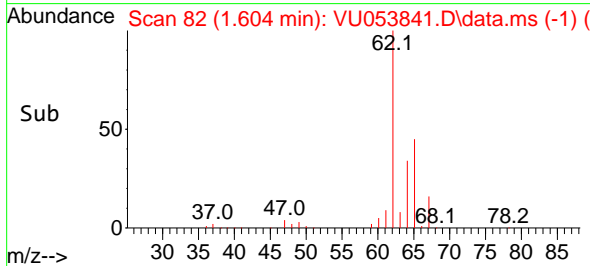
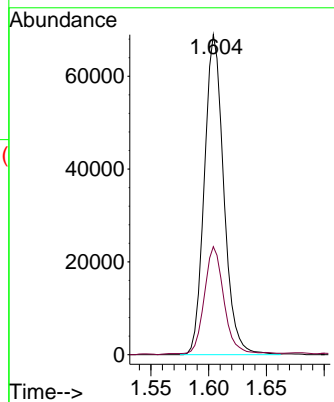
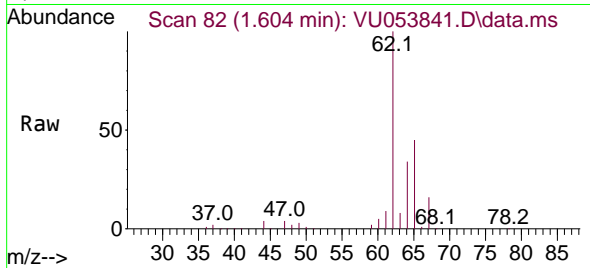




#5  
 Vinyl chloride  
 Concen: 5.745 ug/L  
 RT: 1.604 min Scan# 81  
 Delta R.T. 0.000 min  
 Lab File: VU053841.D  
 Acq: 24 Apr 2023 14:00

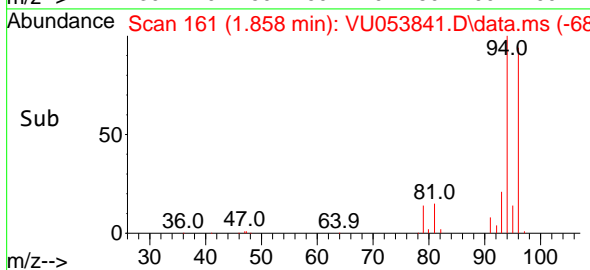
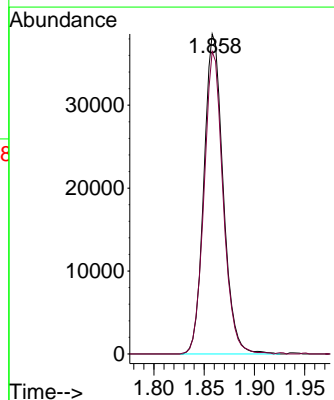
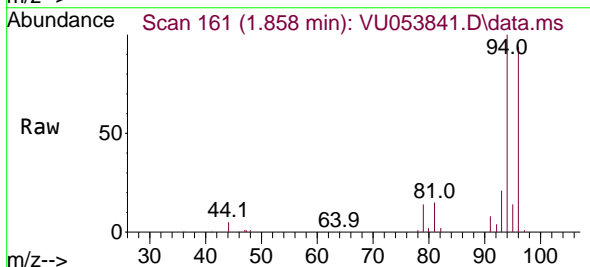
Instrument :  
 MSVOA\_U  
 ClientSampleId :  
 VICV025

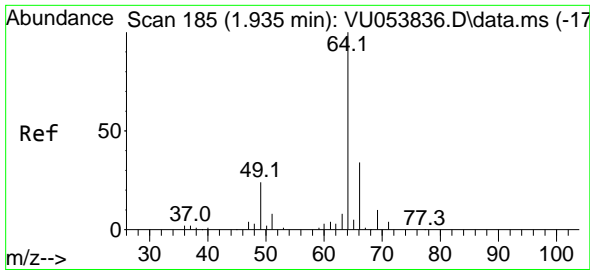
Tgt Ion: 62 Resp: 80438  
 Ion Ratio Lower Upper  
 62 100  
 64 33.7 22.4 41.6



#6  
 Bromomethane  
 Concen: 5.635 ug/L  
 RT: 1.858 min Scan# 161  
 Delta R.T. 0.000 min  
 Lab File: VU053841.D  
 Acq: 24 Apr 2023 14:00

Tgt Ion: 94 Resp: 51347  
 Ion Ratio Lower Upper  
 94 100  
 96 94.5 61.9 114.9

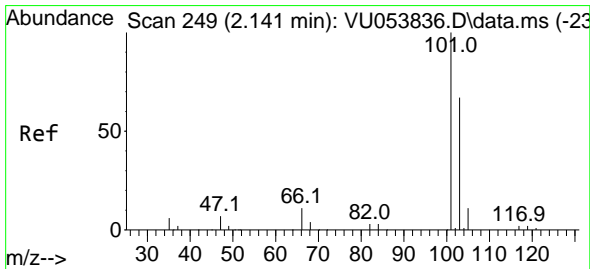
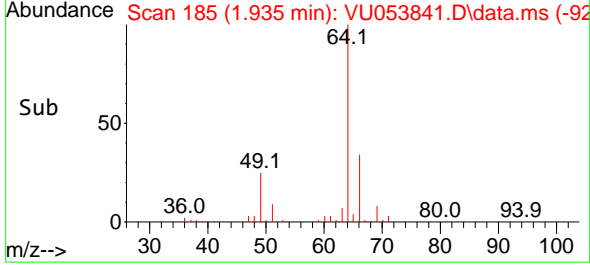
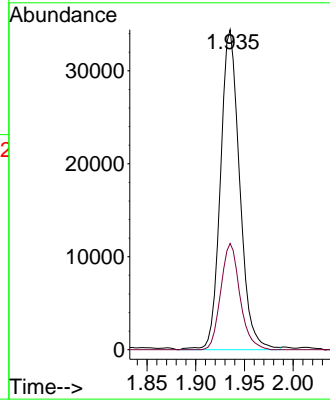
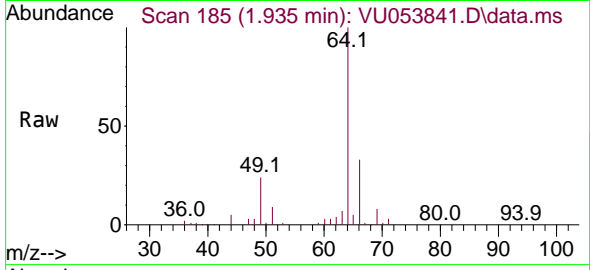




#8  
 Chloroethane  
 Concen: 5.400 ug/L  
 RT: 1.935 min Scan# 185  
 Delta R.T. 0.000 min  
 Lab File: VU053841.D  
 Acq: 24 Apr 2023 14:00

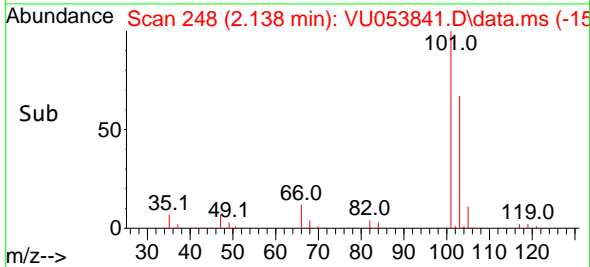
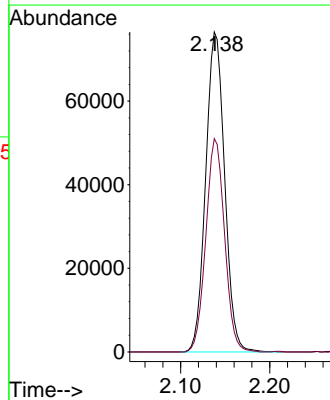
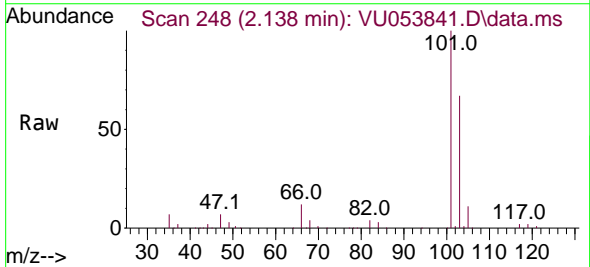
Instrument : MSVOA\_U  
 ClientSampleId : VICV025

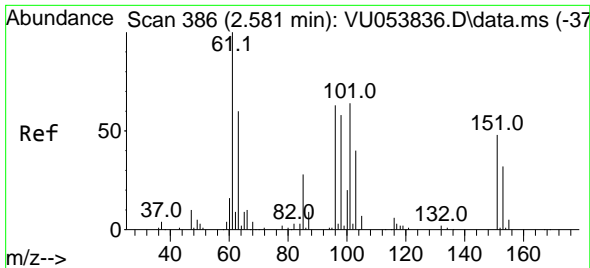
Tgt Ion: 64 Resp: 47194  
 Ion Ratio Lower Upper  
 64 100  
 66 33.2 23.8 44.2



#9  
 Trichlorofluoromethane  
 Concen: 5.458 ug/L  
 RT: 2.138 min Scan# 248  
 Delta R.T. -0.003 min  
 Lab File: VU053841.D  
 Acq: 24 Apr 2023 14:00

Tgt Ion:101 Resp: 112843  
 Ion Ratio Lower Upper  
 101 100  
 103 66.0 52.6 78.8

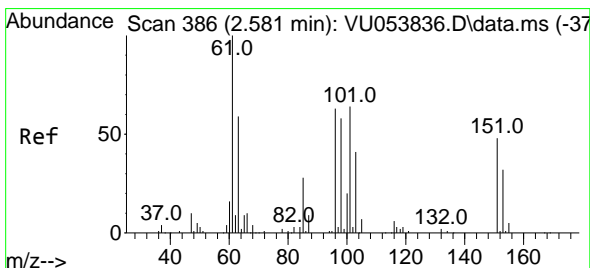
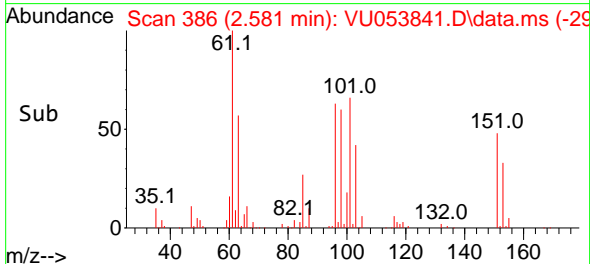
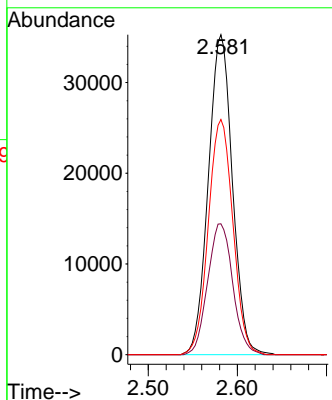
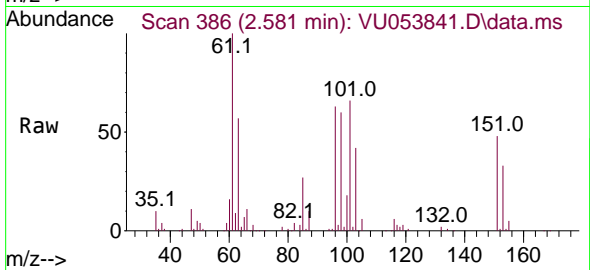




#10  
 1,1,2-Trichloro-1,2,2-trifluoroethane  
 Concen: 5.514 ug/L  
 RT: 2.581 min Scan# 386  
 Delta R.T. 0.000 min  
 Lab File: VU053841.D  
 Acq: 24 Apr 2023 14:00

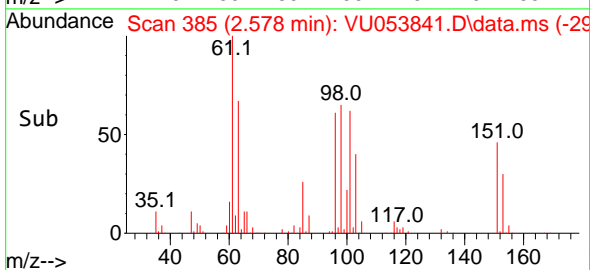
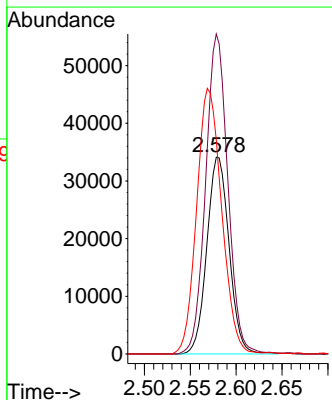
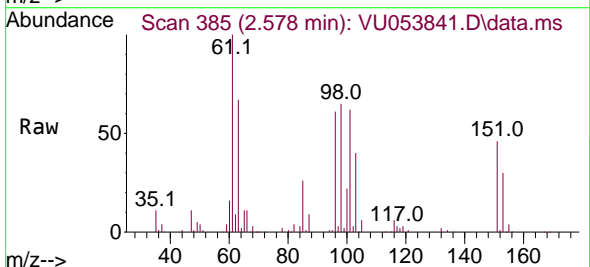
Instrument :  
 MSVOA\_U  
 ClientSampleId :  
 VICV025

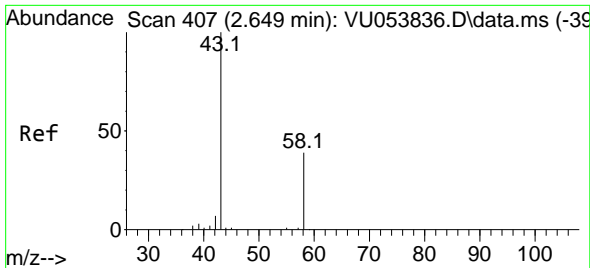
Tgt Ion:101 Resp: 66248  
 Ion Ratio Lower Upper  
 101 100  
 85 42.6 34.7 52.1  
 151 75.1 59.1 88.7



#12  
 1,1-Dichloroethene  
 Concen: 5.434 ug/L  
 RT: 2.578 min Scan# 385  
 Delta R.T. -0.003 min  
 Lab File: VU053841.D  
 Acq: 24 Apr 2023 14:00

Tgt Ion: 96 Resp: 57582  
 Ion Ratio Lower Upper  
 96 100  
 61 162.6 111.5 207.1  
 63 108.8 68.7 127.7

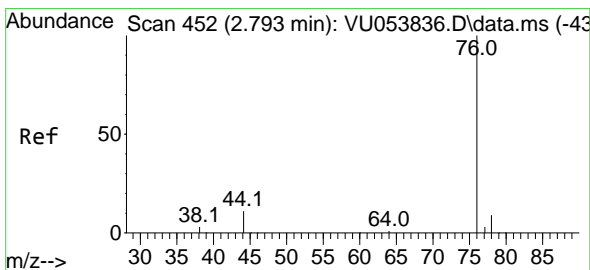
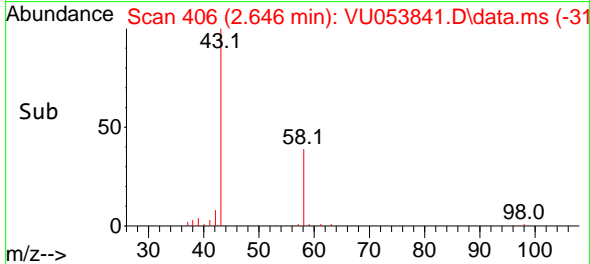
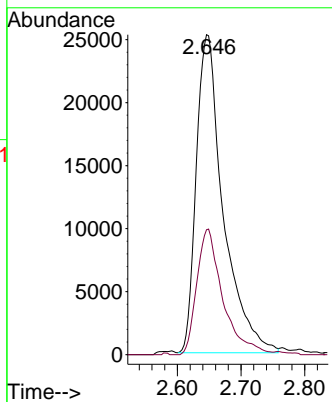
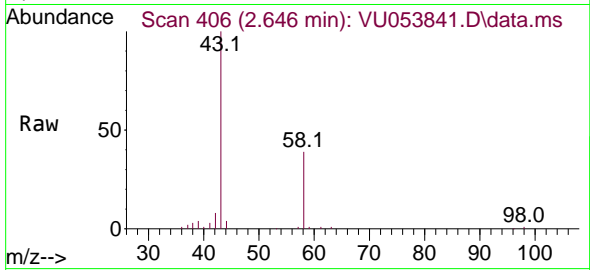




#13  
 Acetone  
 Concen: 48.671 ug/L  
 RT: 2.646 min Scan# 407  
 Delta R.T. -0.003 min  
 Lab File: VU053841.D  
 Acq: 24 Apr 2023 14:00

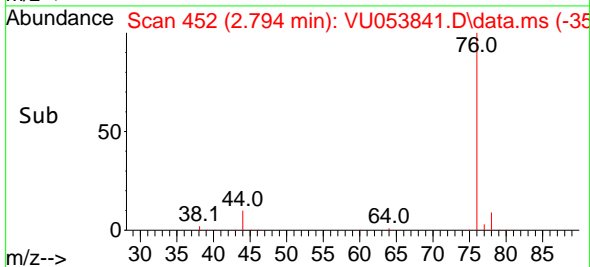
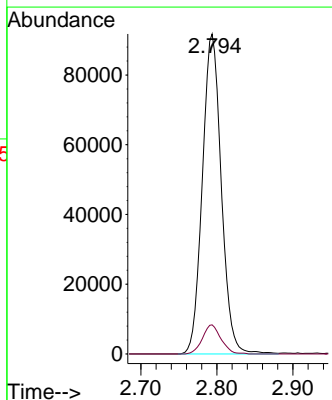
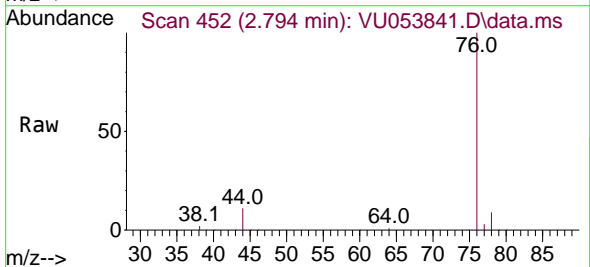
Instrument : MSVOA\_U  
 ClientSampleId : VICV025

Tgt Ion: 43 Resp: 74173  
 Ion Ratio Lower Upper  
 43 100  
 58 38.2 0.0 76.2

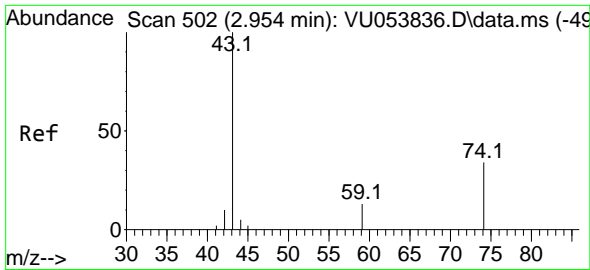


#14  
 Carbon disulfide  
 Concen: 5.464 ug/L  
 RT: 2.794 min Scan# 452  
 Delta R.T. 0.000 min  
 Lab File: VU053841.D  
 Acq: 24 Apr 2023 14:00

Tgt Ion: 76 Resp: 158651  
 Ion Ratio Lower Upper  
 76 100  
 78 9.1 7.3 10.9

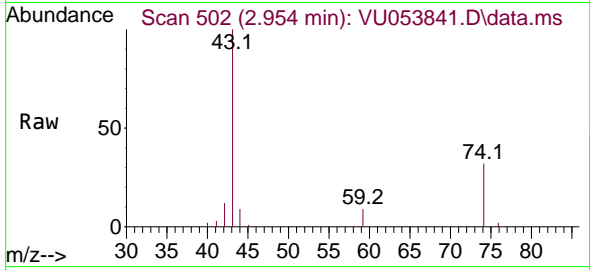




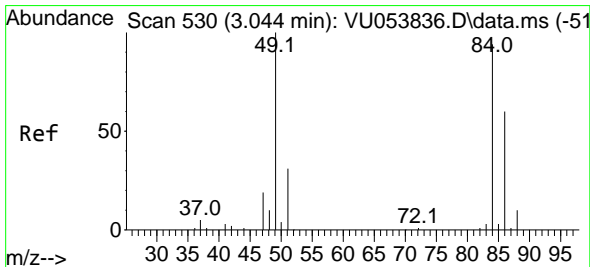
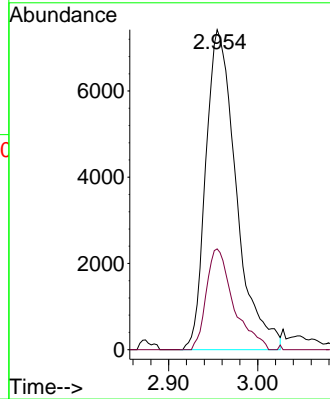
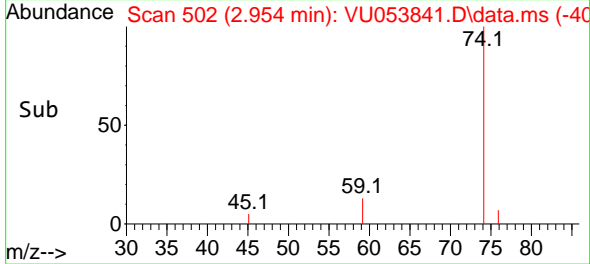


#15  
 Methyl Acetate  
 Concen: 5.358 ug/L  
 RT: 2.954 min Scan# 50  
 Delta R.T. 0.000 min  
 Lab File: VU053841.D  
 Acq: 24 Apr 2023 14:00

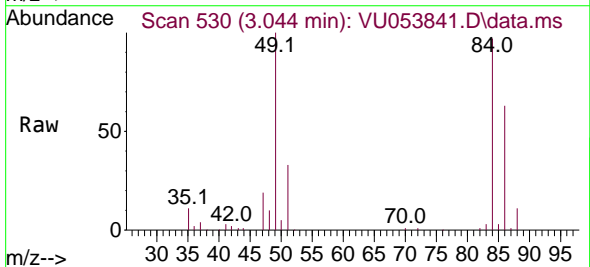
Instrument : MSVOA\_U  
 ClientSampleId : VICV025



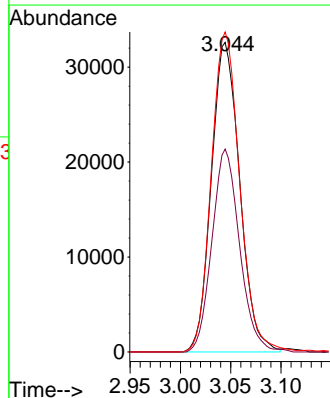
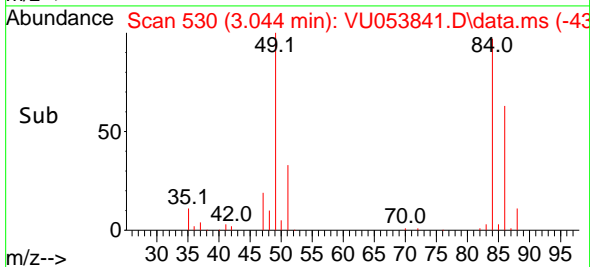
Tgt Ion: 43 Resp: 17623  
 Ion Ratio Lower Upper  
 43 100  
 74 28.1 22.0 33.0

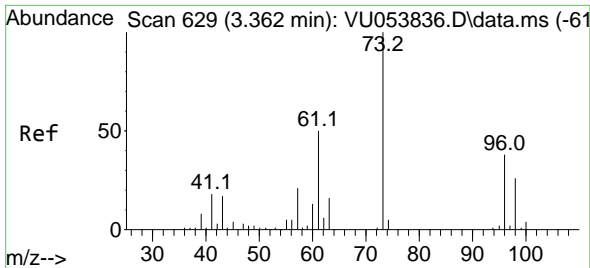


#16  
 Methylene chloride  
 Concen: 4.432 ug/L  
 RT: 3.044 min Scan# 530  
 Delta R.T. 0.000 min  
 Lab File: VU053841.D  
 Acq: 24 Apr 2023 14:00



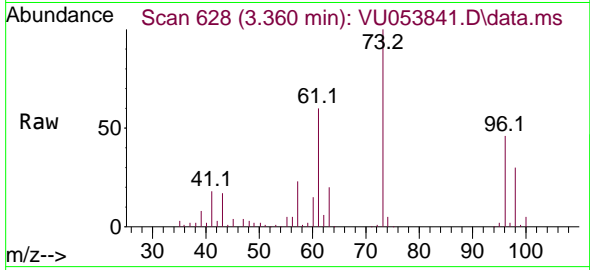
Tgt Ion: 84 Resp: 64083  
 Ion Ratio Lower Upper  
 84 100  
 86 65.5 45.0 83.6  
 49 103.3 74.8 138.8



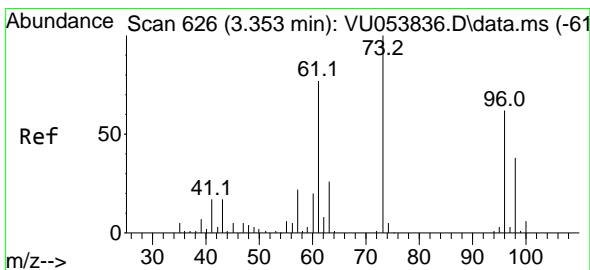
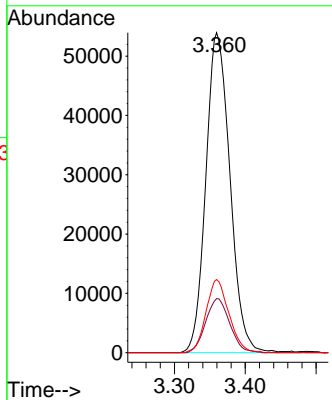
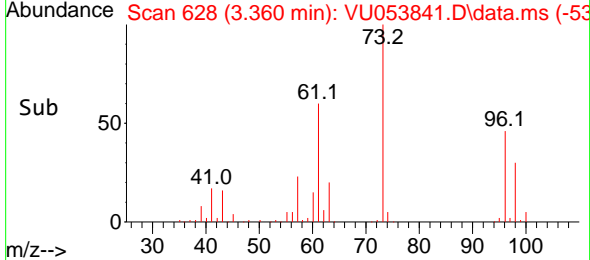


#17  
 Methyl tert-butyl Ether  
 Concen: 5.550 ug/L  
 RT: 3.360 min Scan# 61  
 Delta R.T. -0.003 min  
 Lab File: VU053841.D  
 Acq: 24 Apr 2023 14:00

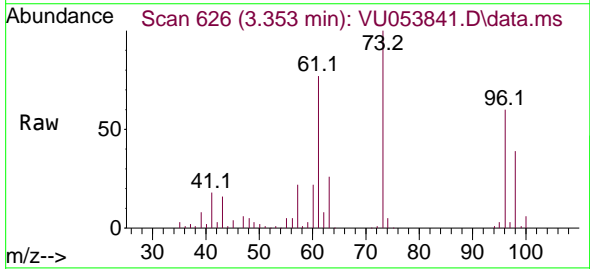
Instrument :  
 MSVOA\_U  
 ClientSampleId :  
 VICV025



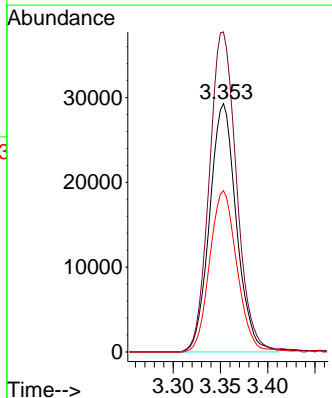
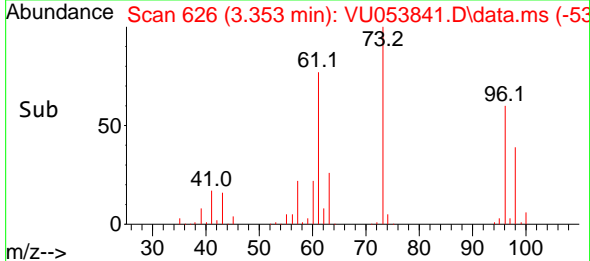
Tgt Ion: 73 Resp: 127398  
 Ion Ratio Lower Upper  
 73 100  
 43 16.8 13.4 20.2  
 57 21.7 17.2 25.8

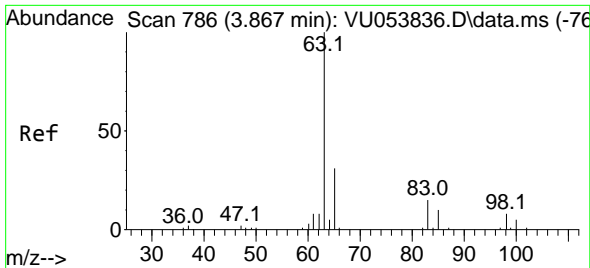


#18  
 trans-1,2-Dichloroethene  
 Concen: 5.394 ug/L  
 RT: 3.353 min Scan# 626  
 Delta R.T. 0.000 min  
 Lab File: VU053841.D  
 Acq: 24 Apr 2023 14:00



Tgt Ion: 96 Resp: 57757  
 Ion Ratio Lower Upper  
 96 100  
 61 128.9 86.2 160.0  
 98 65.0 42.8 79.4



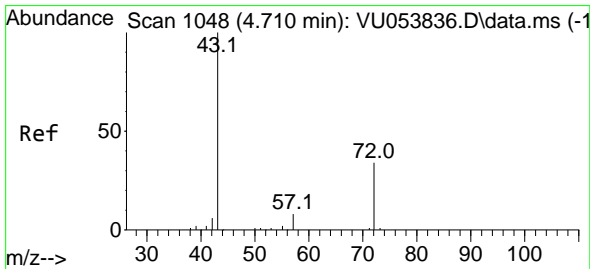
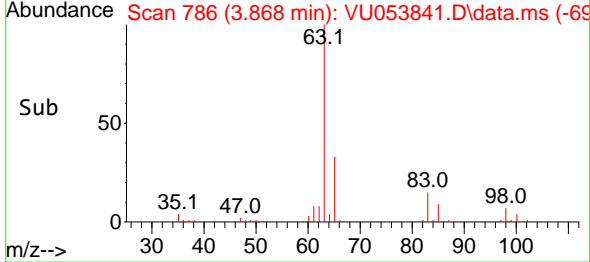
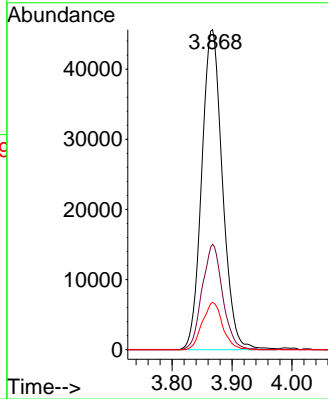
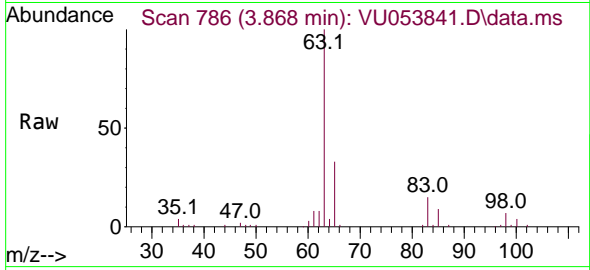


#19  
 1,1-Dichloroethane  
 Concen: 5.667 ug/L  
 RT: 3.868 min Scan# 786  
 Delta R.T. 0.000 min  
 Lab File: VU053841.D  
 Acq: 24 Apr 2023 14:00

Instrument : MSVOA\_U  
 ClientSampleId : VICV025

Tgt Ion: 63 Resp: 109814

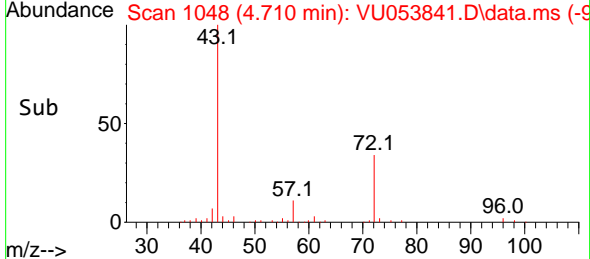
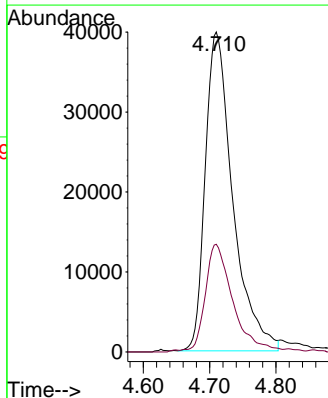
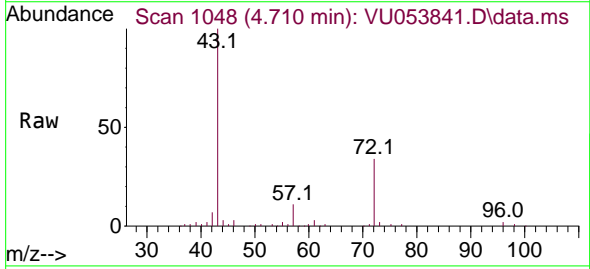
Ion	Ratio	Lower	Upper
63	100		
65	32.9	22.0	40.8
83	14.8	10.3	19.1

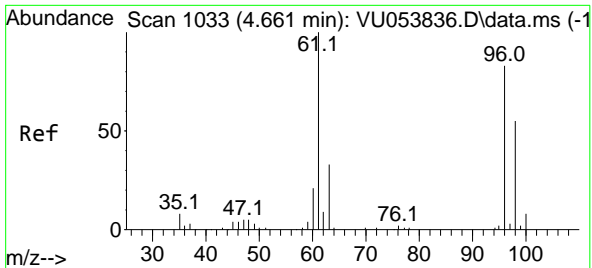


#21  
 2-Butanone  
 Concen: 54.520 ug/L  
 RT: 4.710 min Scan# 1048  
 Delta R.T. 0.000 min  
 Lab File: VU053841.D  
 Acq: 24 Apr 2023 14:00

Tgt Ion: 43 Resp: 115013

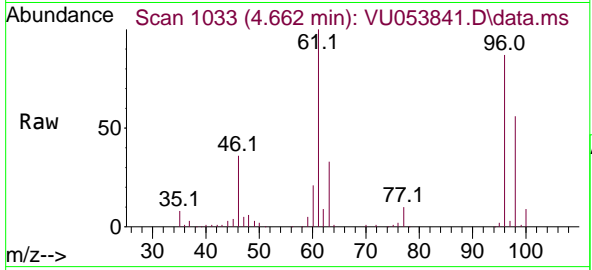
Ion	Ratio	Lower	Upper
43	100		
72	32.0	15.7	47.0





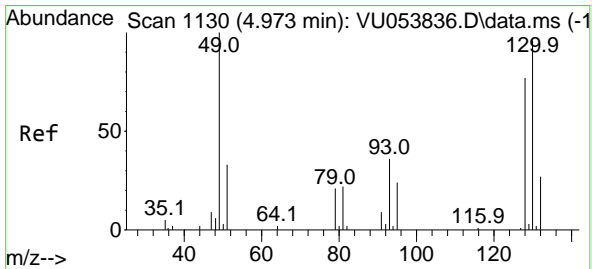
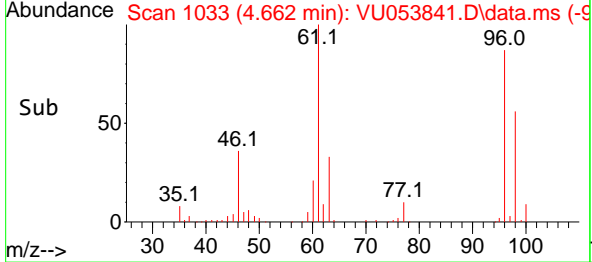
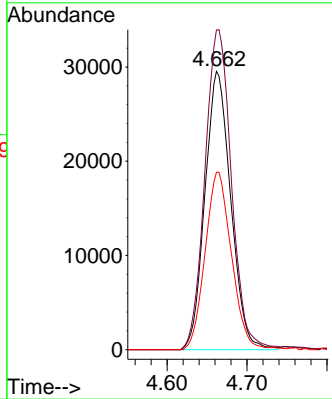
#22  
 cis-1,2-Dichloroethene  
 Concen: 5.500 ug/L  
 RT: 4.662 min Scan# 1033  
 Delta R.T. 0.000 min  
 Lab File: VU053841.D  
 Acq: 24 Apr 2023 14:00

Instrument : MSVOA\_U  
 ClientSampleId : VICV025

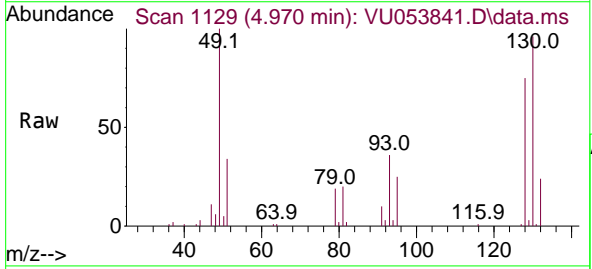


Tgt Ion: 96 Resp: 66437

Ion	Ratio	Lower	Upper
96	100		
61	114.8	84.3	156.5
98	63.7	46.4	86.2

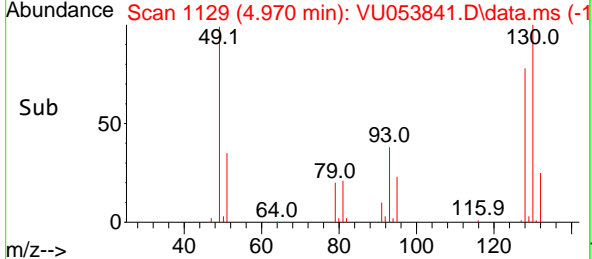
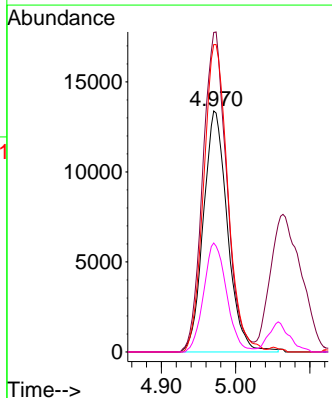


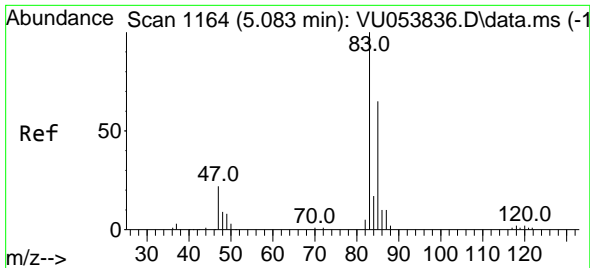
#23  
 Bromochloromethane  
 Concen: 5.608 ug/L  
 RT: 4.970 min Scan# 1129  
 Delta R.T. -0.003 min  
 Lab File: VU053841.D  
 Acq: 24 Apr 2023 14:00



Tgt Ion: 128 Resp: 30144

Ion	Ratio	Lower	Upper
128	100		
49	132.6	91.3	169.5
130	127.5	87.6	162.8
51	45.2	34.6	51.8

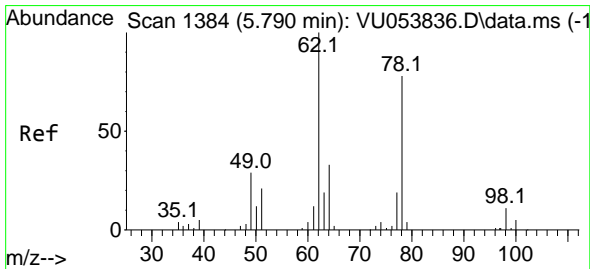
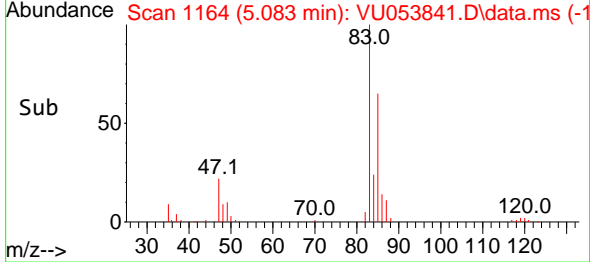
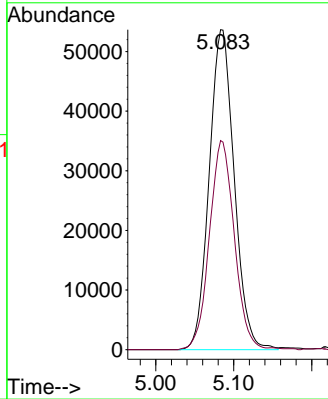
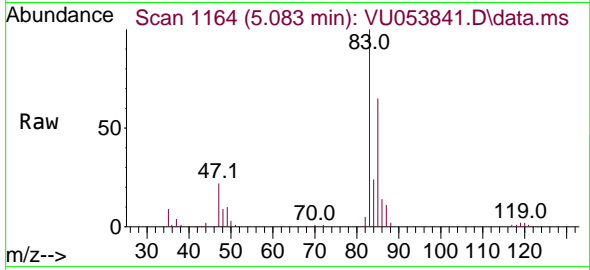




#25  
 Chloroform  
 Concen: 5.690 ug/L  
 RT: 5.083 min Scan# 1164  
 Delta R.T. 0.000 min  
 Lab File: VU053841.D  
 Acq: 24 Apr 2023 14:00

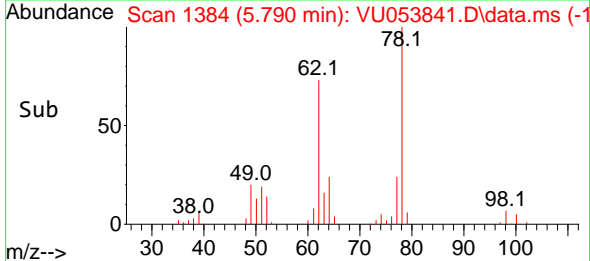
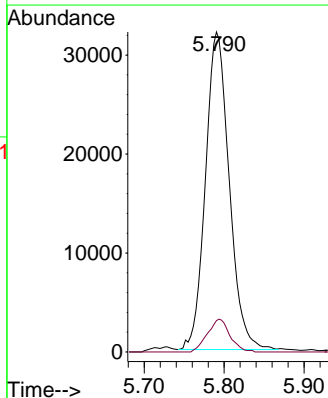
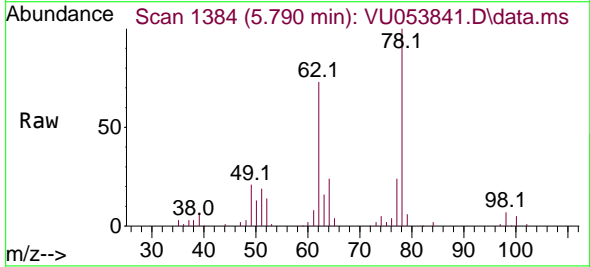
Instrument : MSVOA\_U  
 ClientSampleId : VICV025

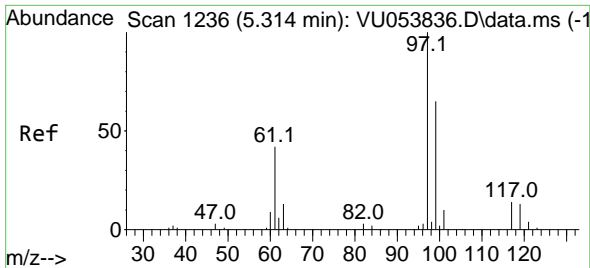
Tgt Ion: 83 Resp: 119746  
 Ion Ratio Lower Upper  
 83 100  
 85 65.3 45.6 84.8



#27  
 1,2-Dichloroethane  
 Concen: 5.495 ug/L  
 RT: 5.790 min Scan# 1384  
 Delta R.T. 0.000 min  
 Lab File: VU053841.D  
 Acq: 24 Apr 2023 14:00

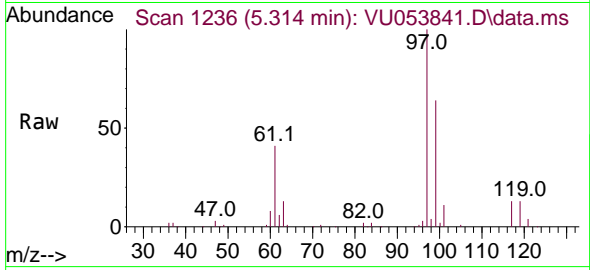
Tgt Ion: 62 Resp: 66292  
 Ion Ratio Lower Upper  
 62 100  
 98 9.8 8.7 13.1



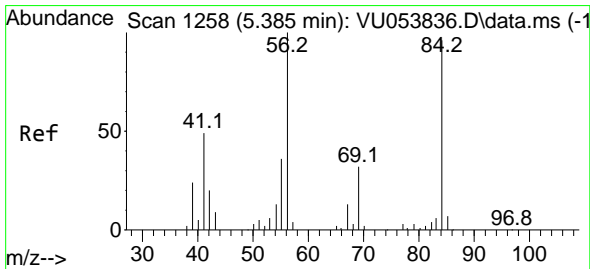
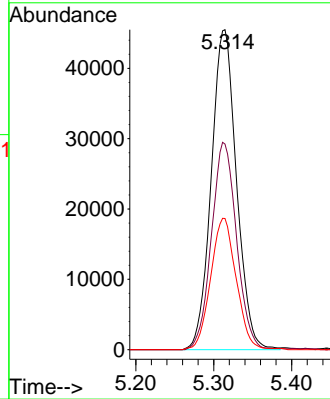
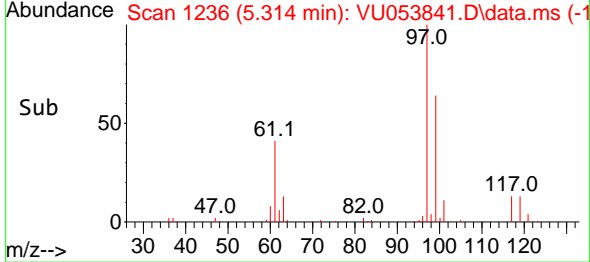


#29  
 1,1,1-Trichloroethane  
 Concen: 5.711 ug/L  
 RT: 5.314 min Scan# 11  
 Delta R.T. 0.000 min  
 Lab File: VU053841.D  
 Acq: 24 Apr 2023 14:00

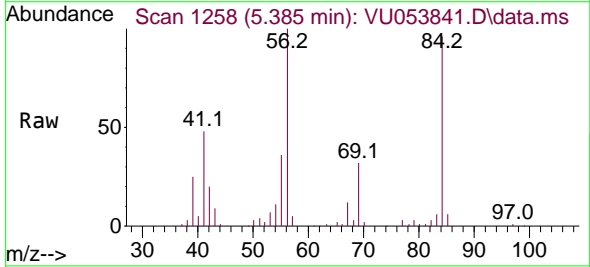
Instrument :  
 MSVOA\_U  
 ClientSampleId :  
 VICV025



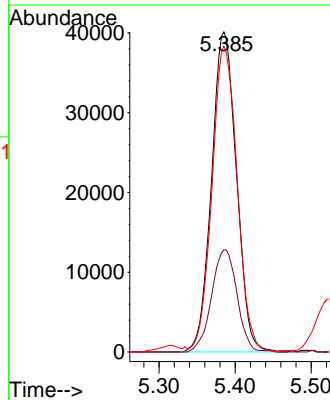
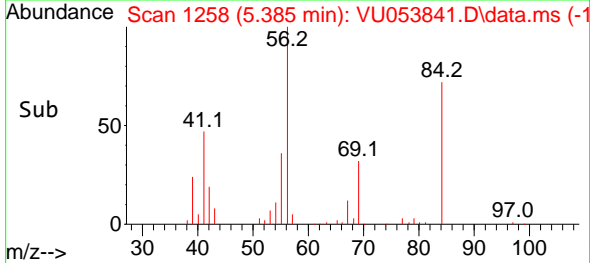
Tgt Ion: 97 Resp: 102549  
 Ion Ratio Lower Upper  
 97 100  
 99 64.6 52.9 79.3  
 61 41.4 33.8 50.8

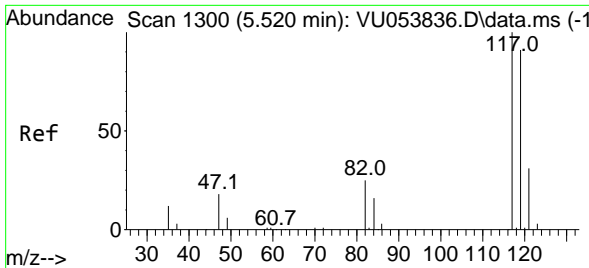


#30  
 Cyclohexane  
 Concen: 5.655 ug/L  
 RT: 5.385 min Scan# 1258  
 Delta R.T. 0.000 min  
 Lab File: VU053841.D  
 Acq: 24 Apr 2023 14:00



Tgt Ion: 56 Resp: 91237  
 Ion Ratio Lower Upper  
 56 100  
 69 32.7 27.0 40.4  
 84 96.4 78.0 117.0

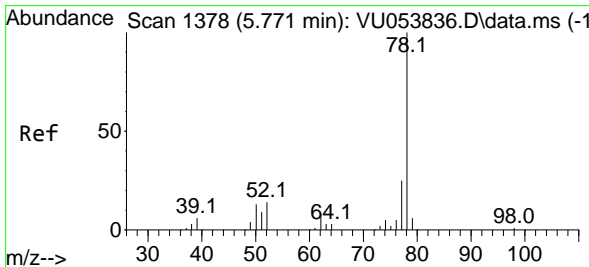
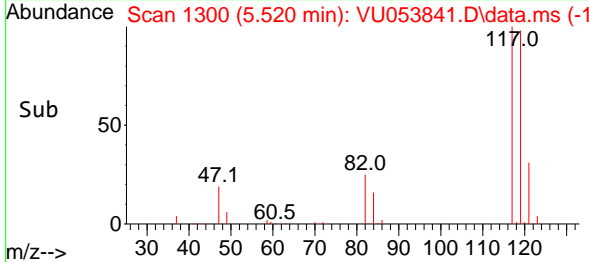
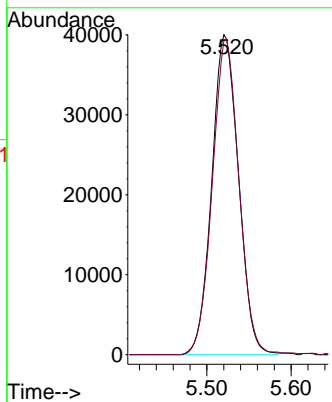
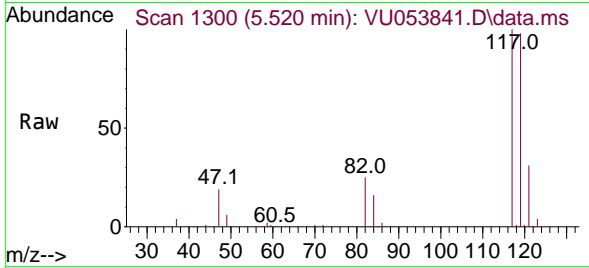




#31  
 Carbon tetrachloride  
 Concen: 5.640 ug/L  
 RT: 5.520 min Scan# 1117  
 Delta R.T. 0.000 min  
 Lab File: VU053841.D  
 Acq: 24 Apr 2023 14:00

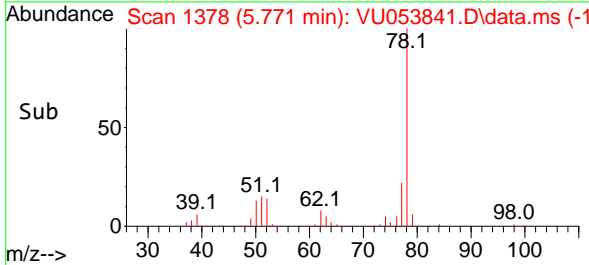
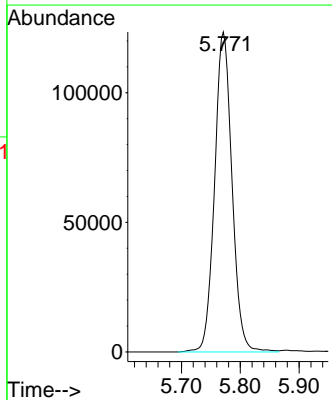
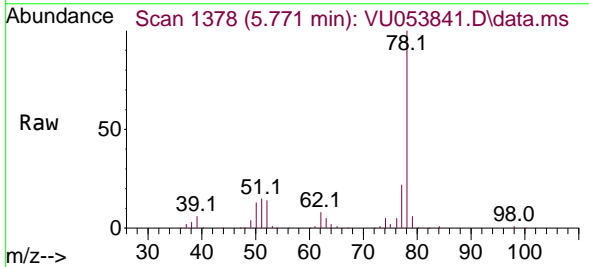
Instrument : MSVOA\_U  
 ClientSampleId : VICV025

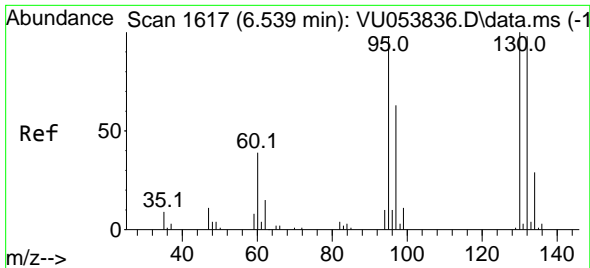
Tgt Ion:117 Resp: 88025  
 Ion Ratio Lower Upper  
 117 100  
 119 98.3 75.0 112.6



#33  
 Benzene  
 Concen: 5.645 ug/L  
 RT: 5.771 min Scan# 1378  
 Delta R.T. 0.000 min  
 Lab File: VU053841.D  
 Acq: 24 Apr 2023 14:00

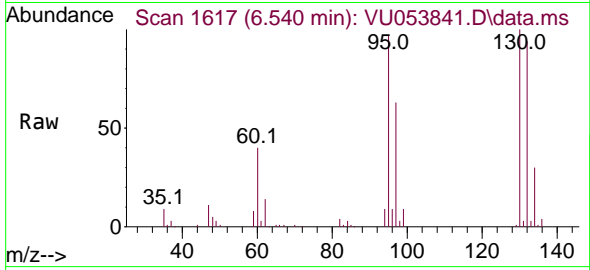
Tgt Ion: 78 Resp: 254177





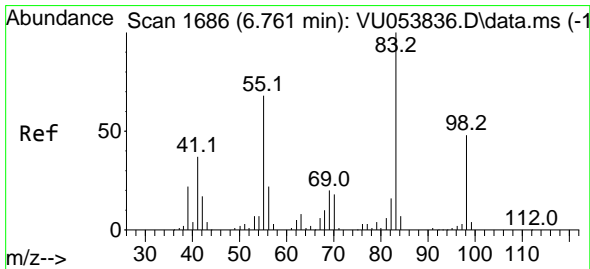
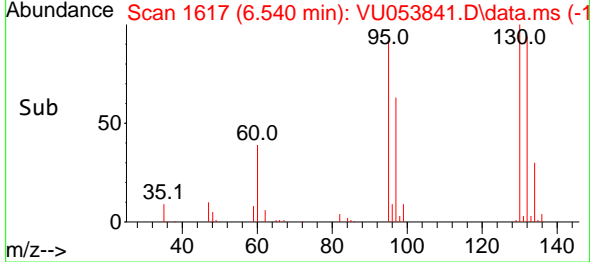
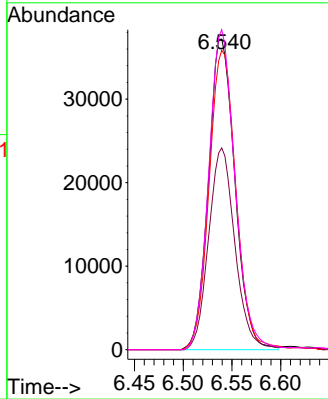
#34  
 Trichloroethene  
 Concen: 5.733 ug/L  
 RT: 6.540 min Scan# 1617  
 Delta R.T. 0.000 min  
 Lab File: VU053841.D  
 Acq: 24 Apr 2023 14:00

Instrument : MSVOA\_U  
 ClientSampleId : VICV025



Tgt Ion: 95 Resp: 70340

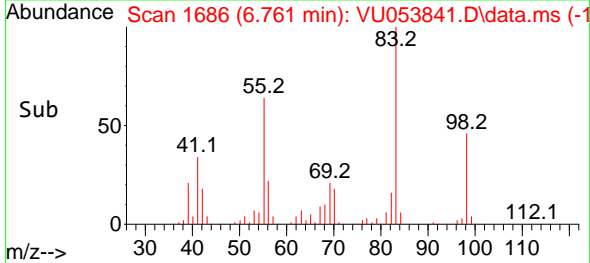
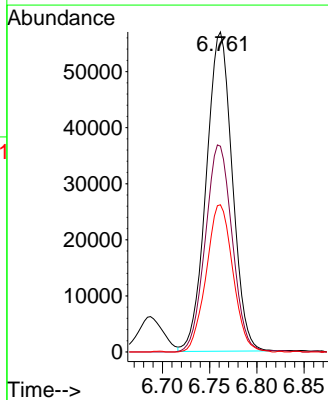
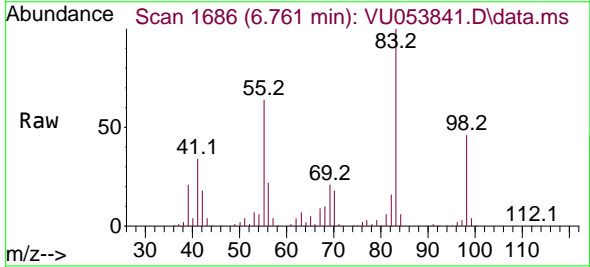
Ion	Ratio	Lower	Upper
95	100		
97	65.0	45.1	83.9
132	96.4	69.9	129.9
130	103.0	71.3	132.3



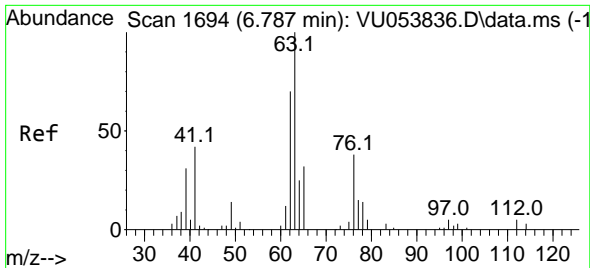
#35  
 Methylcyclohexane  
 Concen: 5.757 ug/L  
 RT: 6.761 min Scan# 1686  
 Delta R.T. 0.000 min  
 Lab File: VU053841.D  
 Acq: 24 Apr 2023 14:00

Tgt Ion: 83 Resp: 109101

Ion	Ratio	Lower	Upper
83	100		
55	67.2	55.4	83.2
98	47.2	37.3	55.9



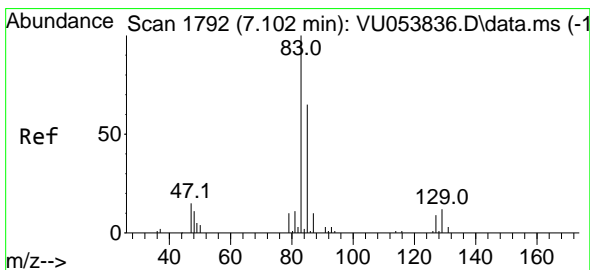
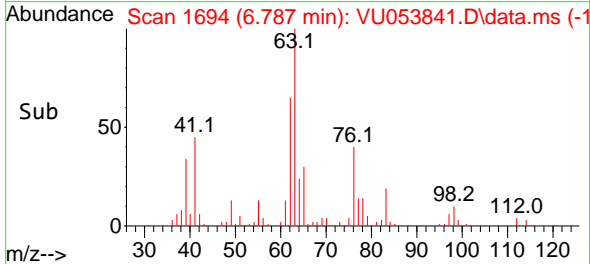
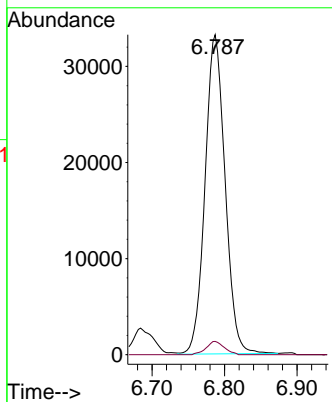
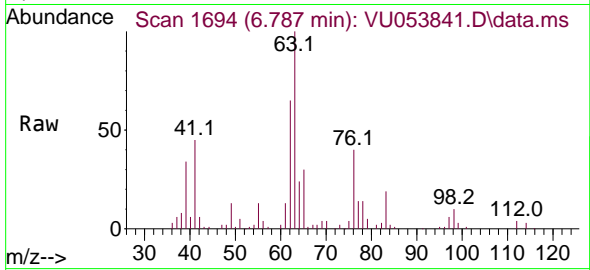




#37  
 1,2-Dichloropropane  
 Concen: 5.711 ug/L  
 RT: 6.787 min Scan# 1694  
 Delta R.T. 0.000 min  
 Lab File: VU053841.D  
 Acq: 24 Apr 2023 14:00

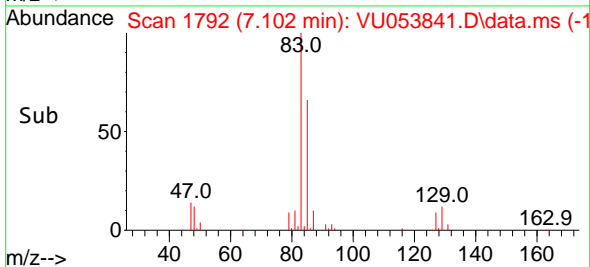
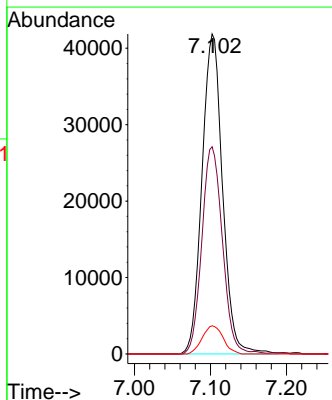
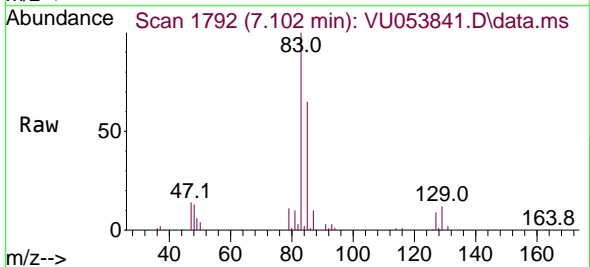
Instrument : MSVOA\_U  
 ClientSampleId : VICV025

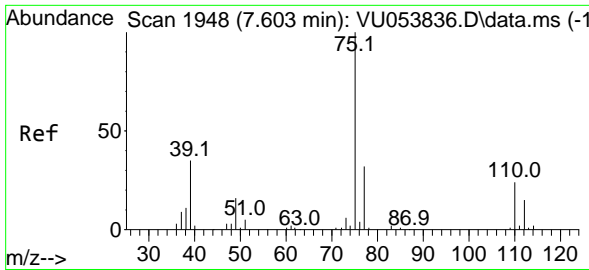
Tgt Ion: 63 Resp: 63797  
 Ion Ratio Lower Upper  
 63 100  
 112 3.8 3.5 5.3



#38  
 Bromodichloromethane  
 Concen: 5.635 ug/L  
 RT: 7.102 min Scan# 1792  
 Delta R.T. 0.000 min  
 Lab File: VU053841.D  
 Acq: 24 Apr 2023 14:00

Tgt Ion: 83 Resp: 78680  
 Ion Ratio Lower Upper  
 83 100  
 85 64.7 45.2 84.0  
 127 8.8 7.3 10.9

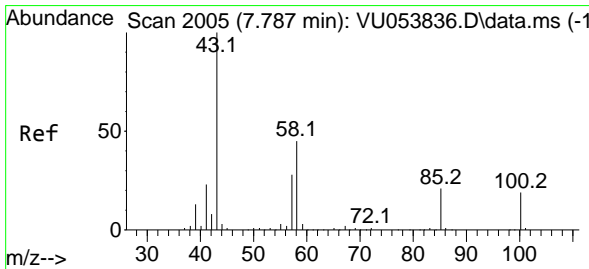
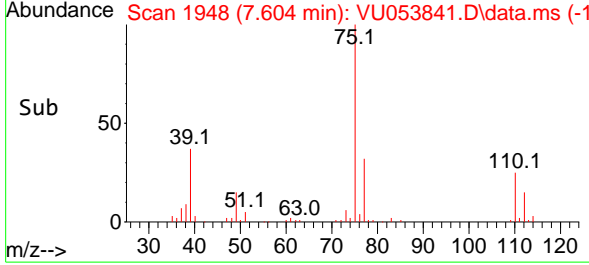
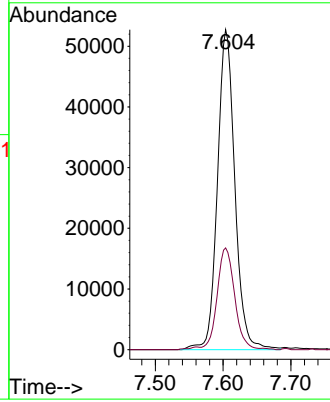
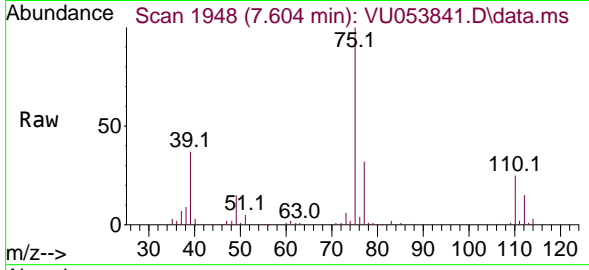




#39  
 cis-1,3-Dichloropropene  
 Concen: 5.588 ug/L  
 RT: 7.604 min Scan# 1948  
 Delta R.T. 0.000 min  
 Lab File: VU053841.D  
 Acq: 24 Apr 2023 14:00

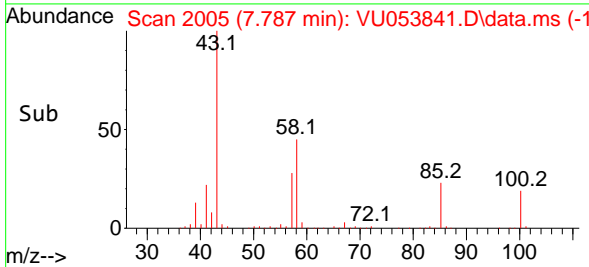
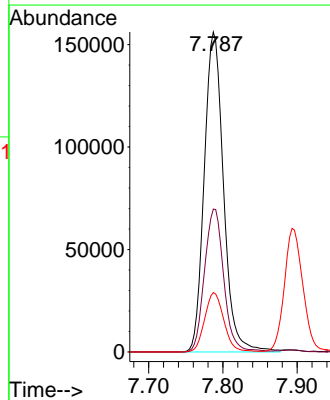
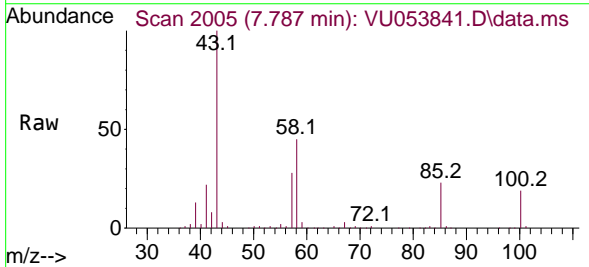
Instrument : MSVOA\_U  
 ClientSampleId : VICV025

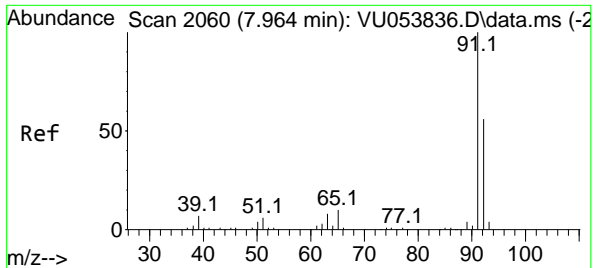
Tgt Ion: 75 Resp: 94124  
 Ion Ratio Lower Upper  
 75 100  
 77 31.8 22.4 41.6



#40  
 4-Methyl-2-pentanone  
 Concen: 55.926 ug/L  
 RT: 7.787 min Scan# 2005  
 Delta R.T. 0.000 min  
 Lab File: VU053841.D  
 Acq: 24 Apr 2023 14:00

Tgt Ion: 43 Resp: 281805  
 Ion Ratio Lower Upper  
 43 100  
 58 44.7 36.0 54.0  
 100 18.4 15.1 22.7

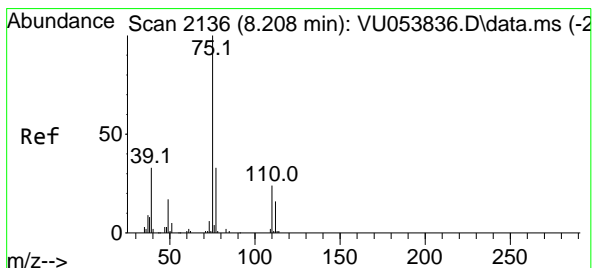
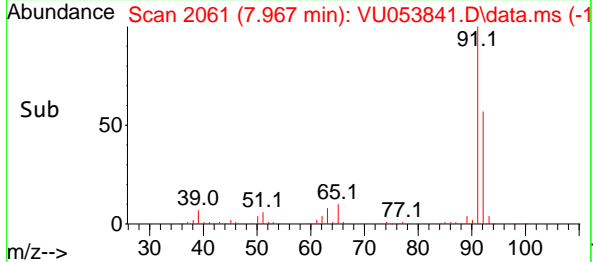
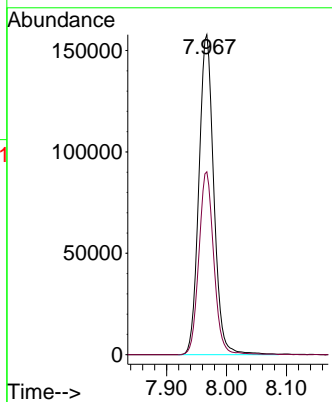
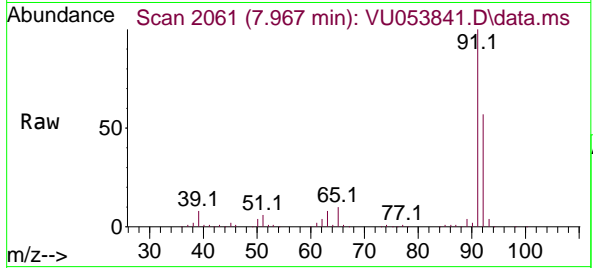




#42  
 Toluene  
 Concen: 5.726 ug/L  
 RT: 7.967 min Scan# 2061  
 Delta R.T. 0.004 min  
 Lab File: VU053841.D  
 Acq: 24 Apr 2023 14:00

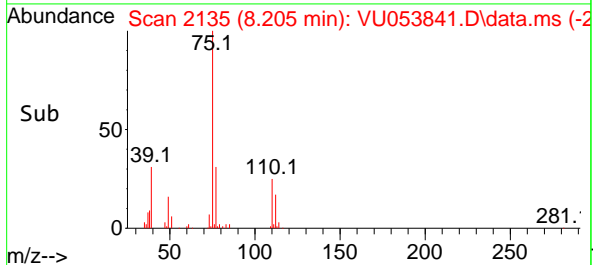
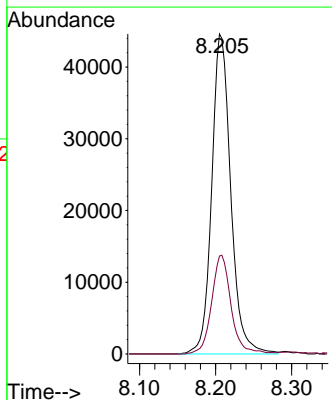
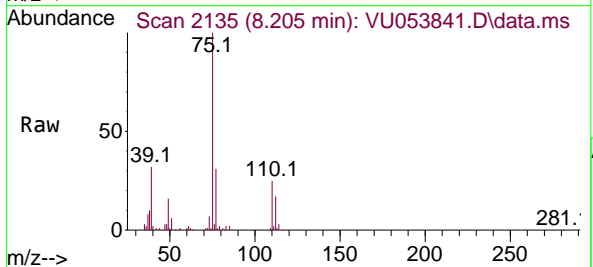
Instrument : MSVOA\_U  
 ClientSampleId : VICV025

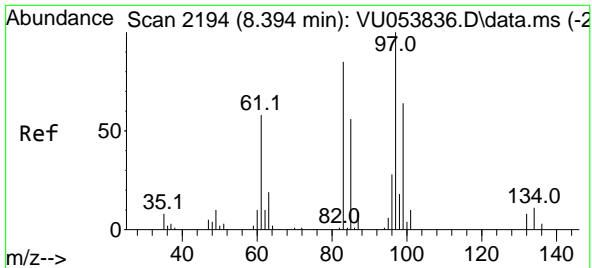
Tgt Ion: 91 Resp: 273382  
 Ion Ratio Lower Upper  
 91 100  
 92 57.2 39.5 73.3



#44  
 trans-1,3-Dichloropropene  
 Concen: 5.694 ug/L  
 RT: 8.205 min Scan# 2135  
 Delta R.T. -0.003 min  
 Lab File: VU053841.D  
 Acq: 24 Apr 2023 14:00

Tgt Ion: 75 Resp: 77563  
 Ion Ratio Lower Upper  
 75 100  
 77 30.6 23.3 43.3



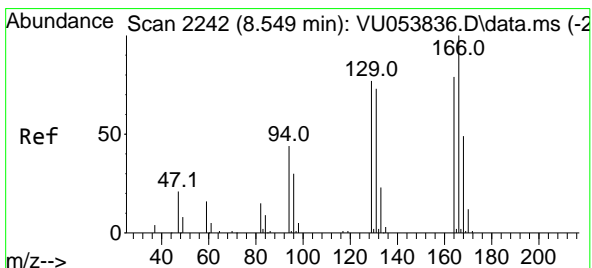
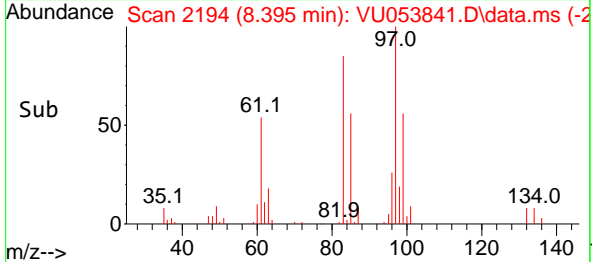
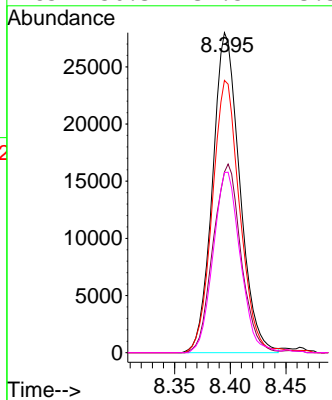
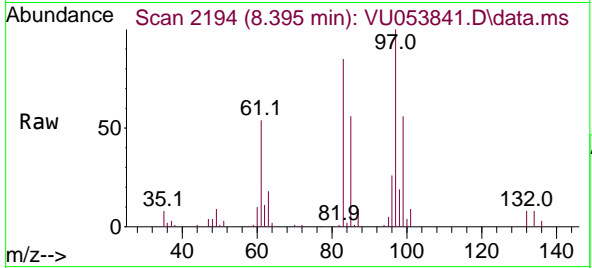


#45  
 1,1,2-Trichloroethane  
 Concen: 5.683 ug/L  
 RT: 8.395 min Scan# 2194  
 Delta R.T. 0.000 min  
 Lab File: VU053841.D  
 Acq: 24 Apr 2023 14:00

Instrument : MSVOA\_U  
 ClientSampleId : VICV025

Tgt Ion: 97 Resp: 47582

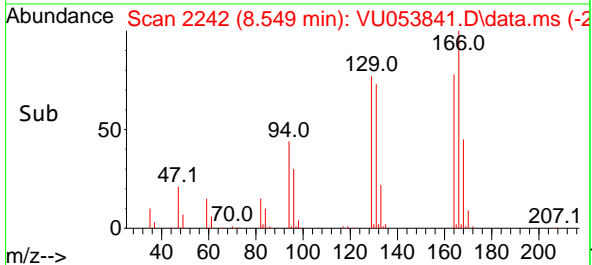
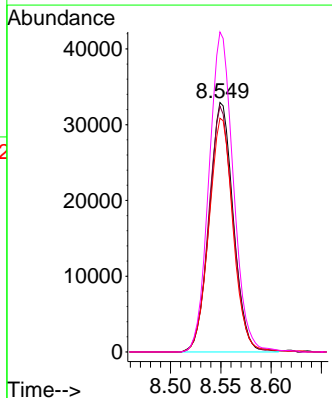
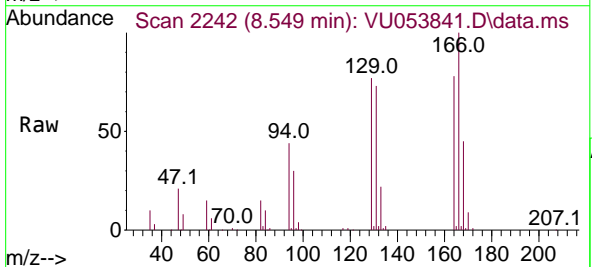
Ion	Ratio	Lower	Upper
97	100		
99	56.5	44.7	83.1
83	85.1	59.8	111.1
85	56.3	39.5	73.3

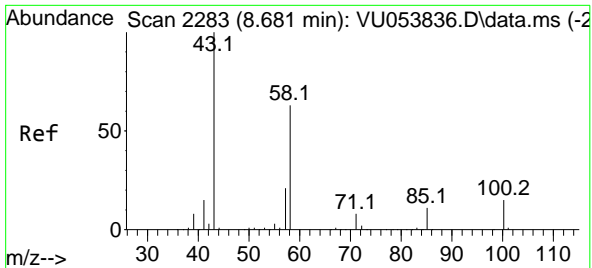


#47  
 Tetrachloroethene  
 Concen: 5.645 ug/L  
 RT: 8.549 min Scan# 2242  
 Delta R.T. 0.000 min  
 Lab File: VU053841.D  
 Acq: 24 Apr 2023 14:00

Tgt Ion: 164 Resp: 54897

Ion	Ratio	Lower	Upper
164	100		
129	98.5	68.3	126.8
131	93.7	64.4	119.6
166	128.2	88.3	163.9



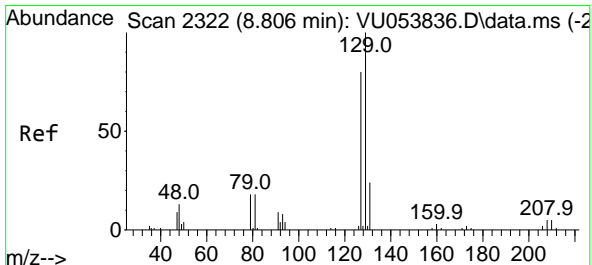
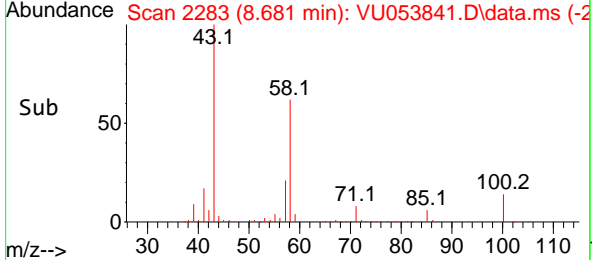
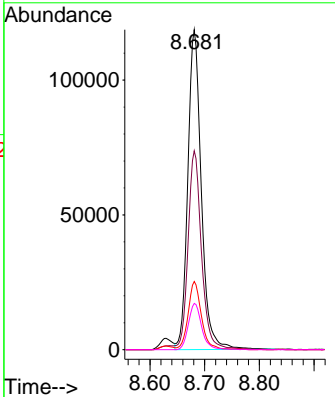
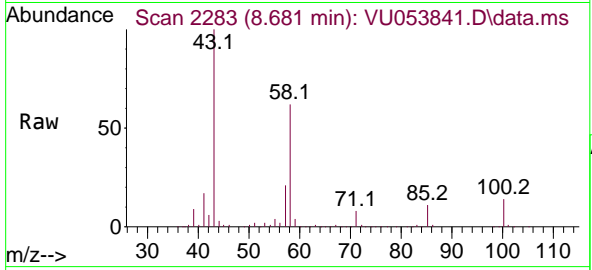


#48  
 2-Hexanone  
 Concen: 53.108 ug/L  
 RT: 8.681 min Scan# 21  
 Delta R.T. 0.000 min  
 Lab File: VU053841.D  
 Acq: 24 Apr 2023 14:00

Instrument : MSVOA\_U  
 ClientSampleId : VICV025

Tgt Ion: 43 Resp: 203404

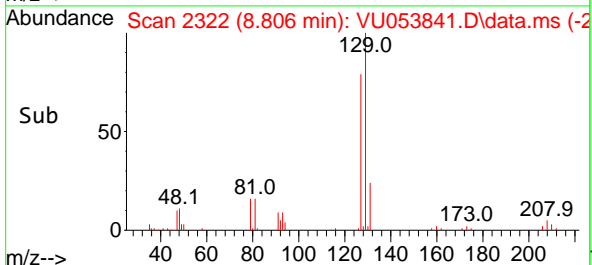
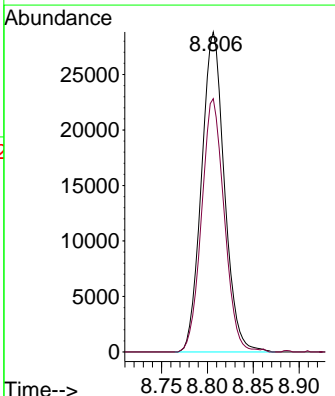
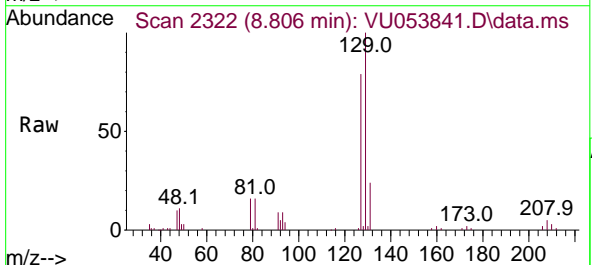
Ion	Ratio	Lower	Upper
43	100		
58	61.5	49.8	74.6
57	20.4	16.9	25.3
100	14.3	11.8	17.8

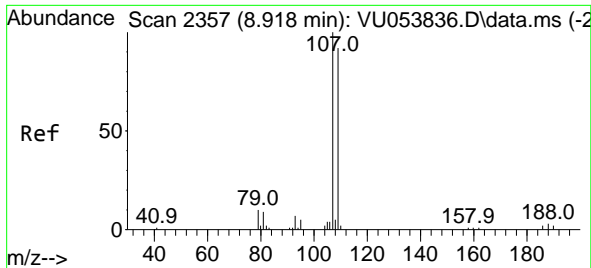


#49  
 Dibromochloromethane  
 Concen: 5.642 ug/L  
 RT: 8.806 min Scan# 2322  
 Delta R.T. 0.000 min  
 Lab File: VU053841.D  
 Acq: 24 Apr 2023 14:00

Tgt Ion: 129 Resp: 50020

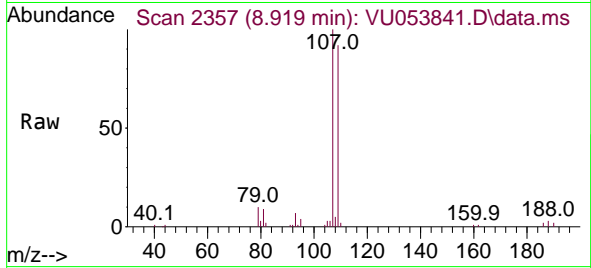
Ion	Ratio	Lower	Upper
129	100		
127	79.1	55.7	103.5



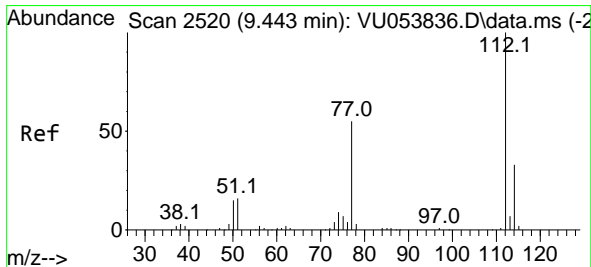
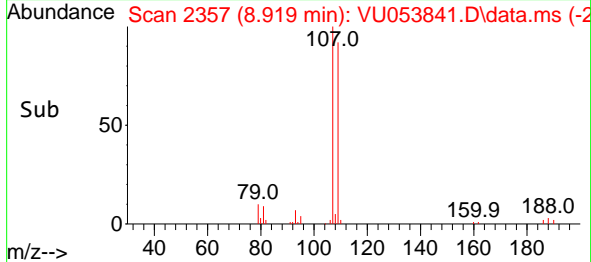
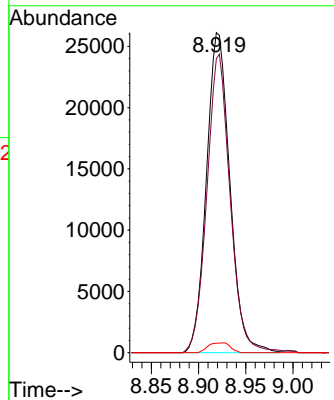


#50  
 1,2-Dibromoethane  
 Concen: 5.822 ug/L  
 RT: 8.919 min Scan# 21  
 Delta R.T. 0.000 min  
 Lab File: VU053841.D  
 Acq: 24 Apr 2023 14:00

Instrument : MSVOA\_U  
 ClientSampleId : VICV025

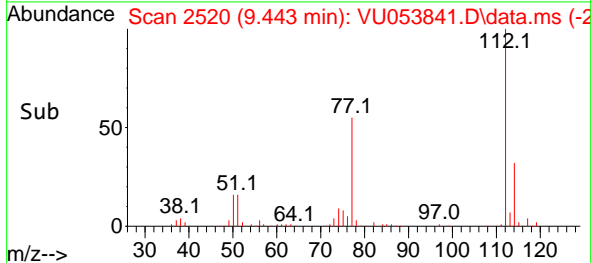
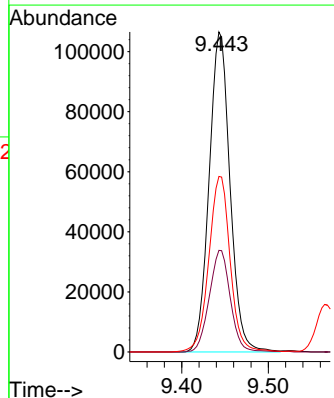
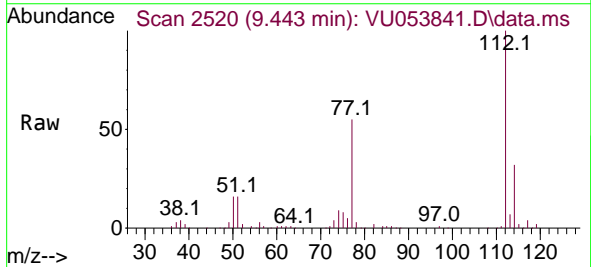


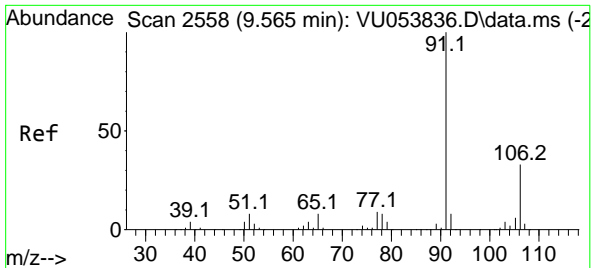
Tgt Ion:107 Resp: 45096  
 Ion Ratio Lower Upper  
 107 100  
 109 91.9 64.3 119.5  
 188 3.0 2.1 3.1



#51  
 Chlorobenzene  
 Concen: 5.506 ug/L  
 RT: 9.443 min Scan# 2520  
 Delta R.T. 0.000 min  
 Lab File: VU053841.D  
 Acq: 24 Apr 2023 14:00

Tgt Ion:112 Resp: 178491  
 Ion Ratio Lower Upper  
 112 100  
 114 31.8 23.0 42.6  
 77 54.8 44.4 66.6

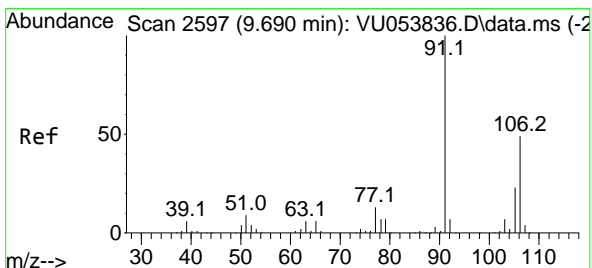
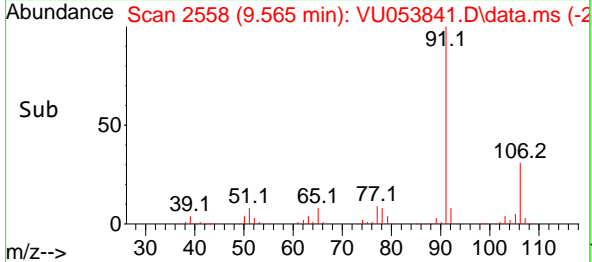
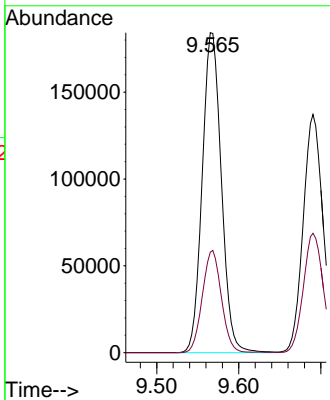
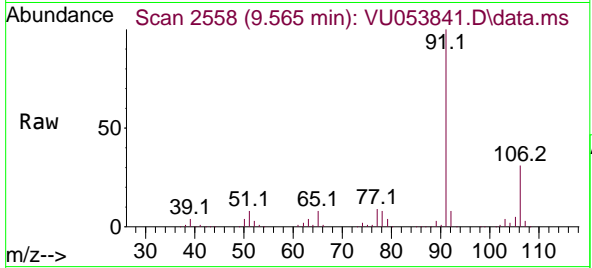




#52  
 Ethylbenzene  
 Concen: 5.710 ug/L  
 RT: 9.565 min Scan# 2558  
 Delta R.T. 0.000 min  
 Lab File: VU053841.D  
 Acq: 24 Apr 2023 14:00

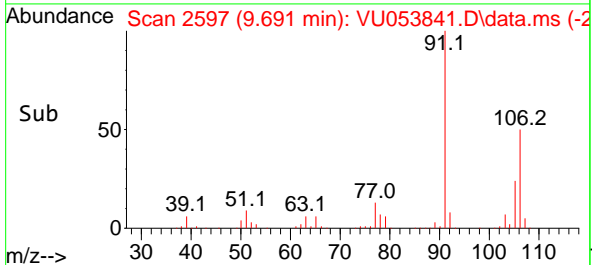
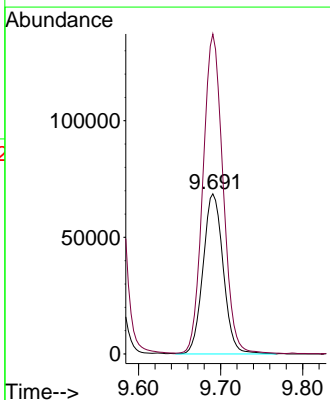
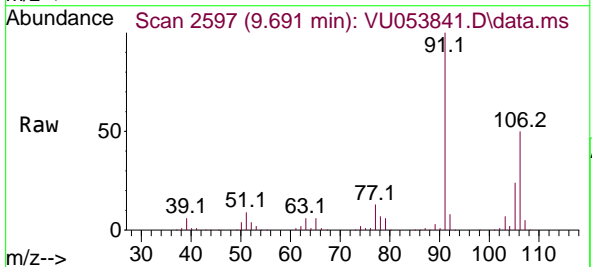
Instrument : MSVOA\_U  
 ClientSampleId : VICV025

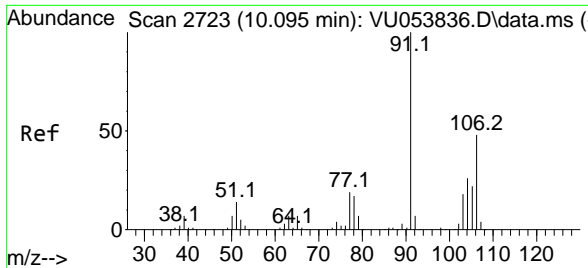
Tgt Ion: 91 Resp: 299400  
 Ion Ratio Lower Upper  
 91 100  
 106 31.4 22.8 42.4



#53  
 m,p-Xylene  
 Concen: 5.832 ug/L  
 RT: 9.691 min Scan# 2597  
 Delta R.T. 0.000 min  
 Lab File: VU053841.D  
 Acq: 24 Apr 2023 14:00

Tgt Ion: 106 Resp: 117169  
 Ion Ratio Lower Upper  
 106 100  
 91 199.7 142.2 264.0

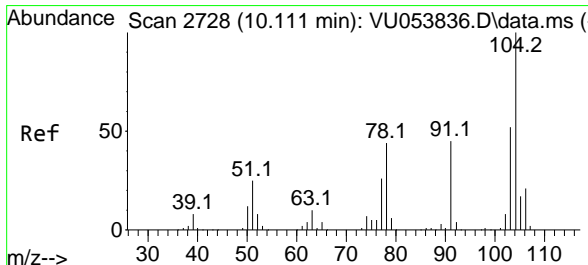
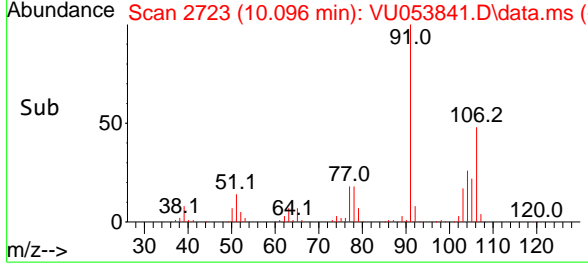
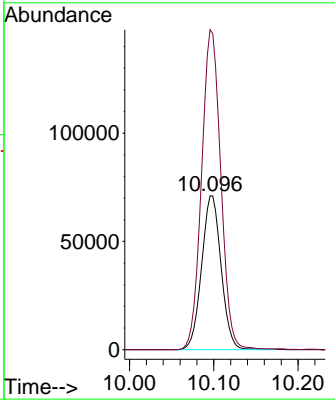
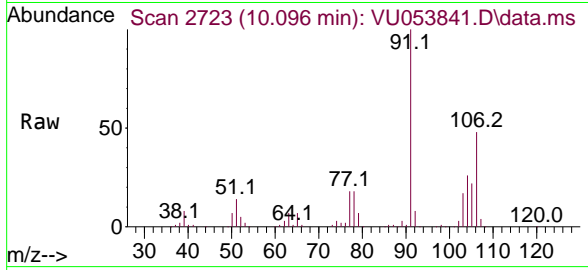




#54  
 o-Xylene  
 Concen: 5.895 ug/L  
 RT: 10.096 min Scan# 2723  
 Delta R.T. 0.000 min  
 Lab File: VU053841.D  
 Acq: 24 Apr 2023 14:00

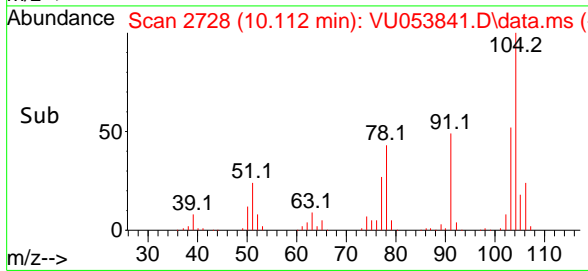
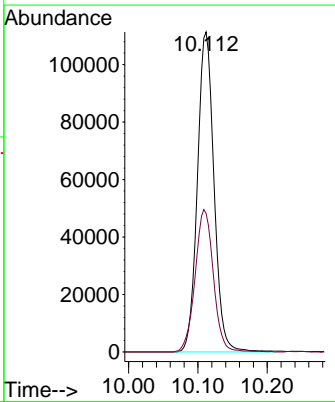
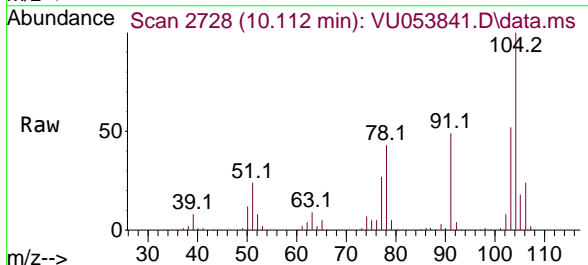
Instrument : MSVOA\_U  
 ClientSampleId : VICV025

Tgt Ion:106 Resp: 114274  
 Ion Ratio Lower Upper  
 106 100  
 91 207.9 145.5 270.1

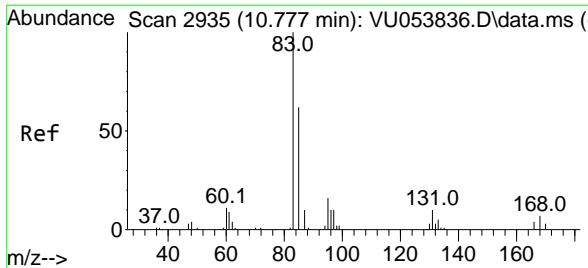


#55  
 Styrene  
 Concen: 5.833 ug/L  
 RT: 10.112 min Scan# 2728  
 Delta R.T. 0.000 min  
 Lab File: VU053841.D  
 Acq: 24 Apr 2023 14:00

Tgt Ion:104 Resp: 184992  
 Ion Ratio Lower Upper  
 104 100  
 78 43.3 30.9 57.5

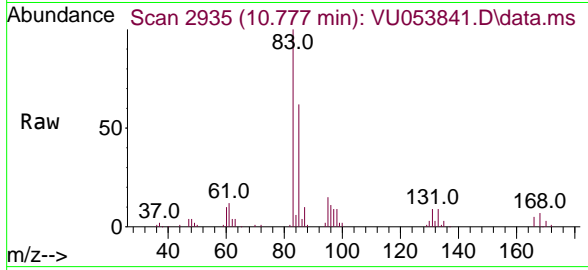




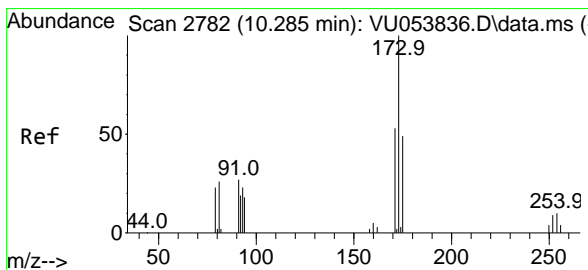
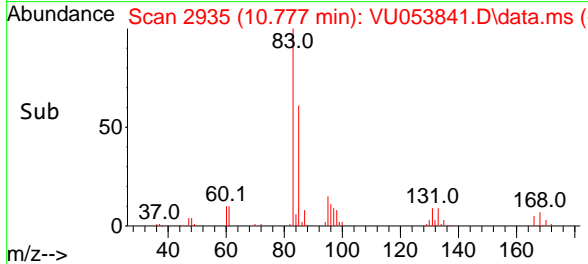
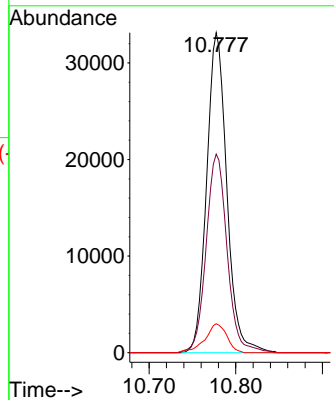


#57  
 1,1,2,2-Tetrachloroethane  
 Concen: 5.368 ug/L  
 RT: 10.777 min Scan# 2935  
 Delta R.T. 0.000 min  
 Lab File: VU053841.D  
 Acq: 24 Apr 2023 14:00

Instrument : MSVOA\_U  
 ClientSampleId : VICV025

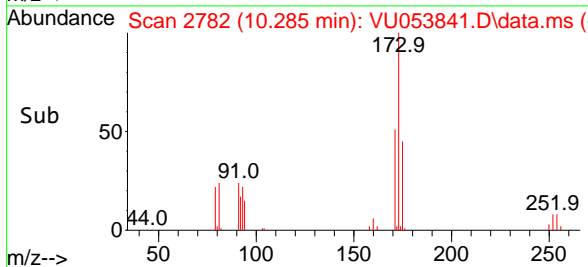
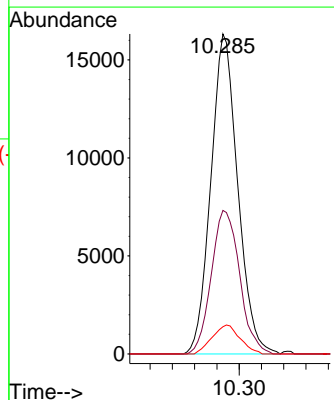
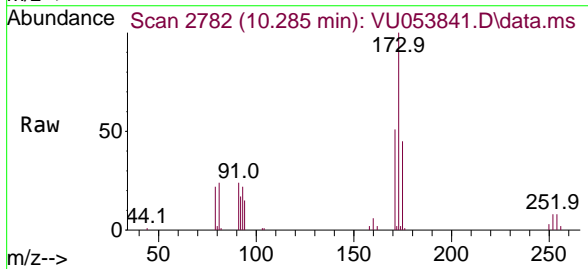


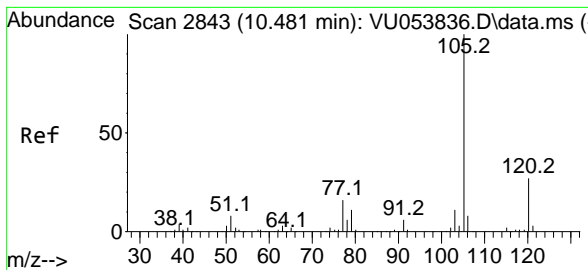
Tgt Ion	Resp	Ion Ratio	Lower	Upper
83	53582	100		
85		62.1	43.5	80.9
131		9.1	7.8	11.6



#59  
 Bromoform  
 Concen: 5.601 ug/L  
 RT: 10.285 min Scan# 2782  
 Delta R.T. 0.000 min  
 Lab File: VU053841.D  
 Acq: 24 Apr 2023 14:00

Tgt Ion	Resp	Ion Ratio	Lower	Upper
173	27335	100		
175		47.2	37.4	56.2
254		9.4	7.1	10.7



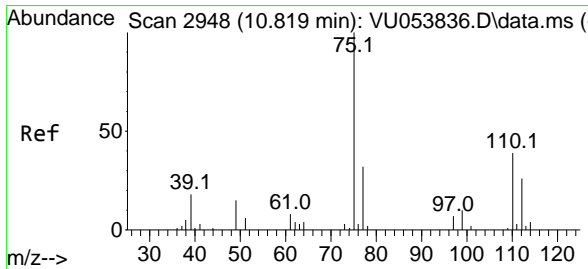
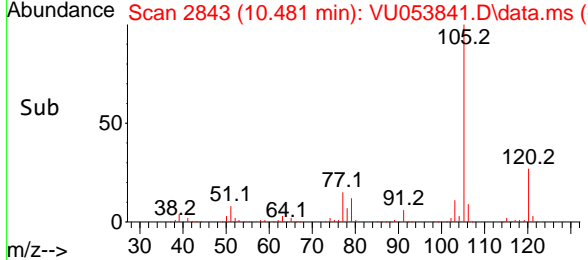
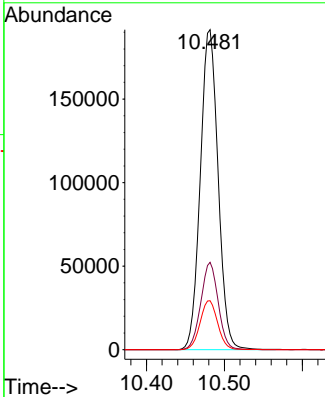
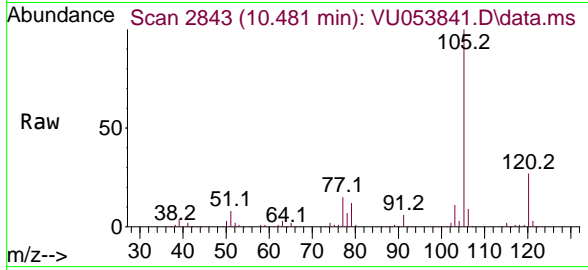


#60  
 Isopropylbenzene  
 Concen: 5.877 ug/L  
 RT: 10.481 min Scan# 21  
 Delta R.T. 0.000 min  
 Lab File: VU053841.D  
 Acq: 24 Apr 2023 14:00

Instrument :  
 MSVOA\_U  
 ClientSampleId :  
 VICV025

Tgt Ion:105 Resp: 303320

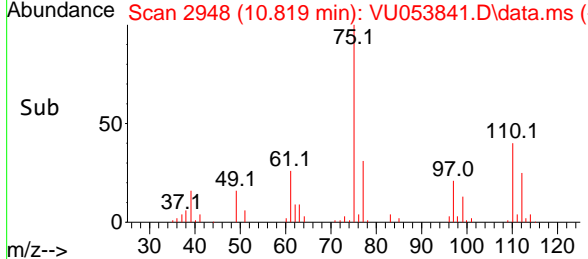
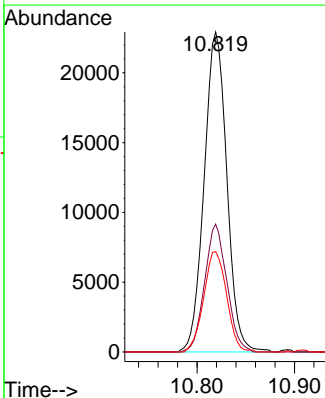
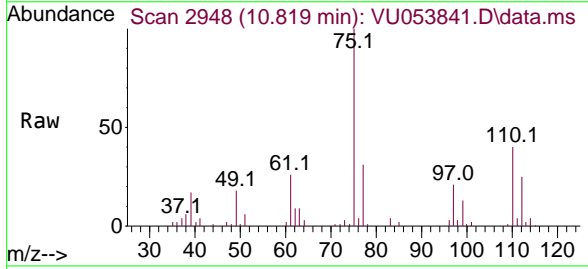
Ion	Ratio	Lower	Upper
105	100		
120	26.7	21.4	32.0
77	15.2	12.6	18.8

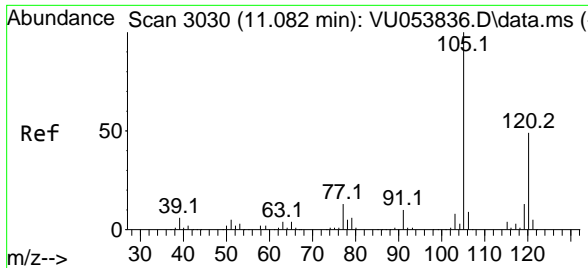


#61  
 1,2,3-Trichloropropane  
 Concen: 5.596 ug/L  
 RT: 10.819 min Scan# 2948  
 Delta R.T. 0.000 min  
 Lab File: VU053841.D  
 Acq: 24 Apr 2023 14:00

Tgt Ion: 75 Resp: 37032

Ion	Ratio	Lower	Upper
75	100		
110	39.1	30.7	46.1
77	31.7	26.2	39.4

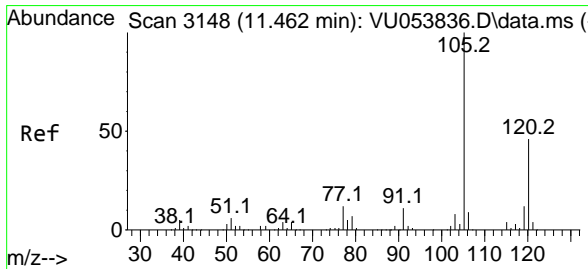
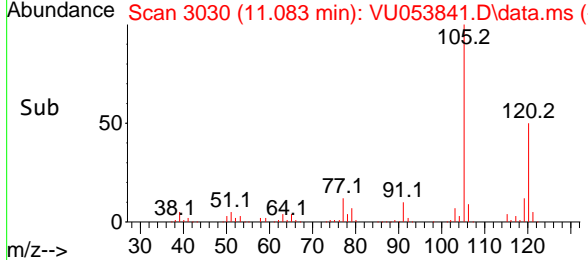
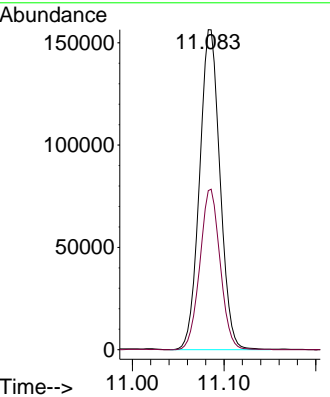
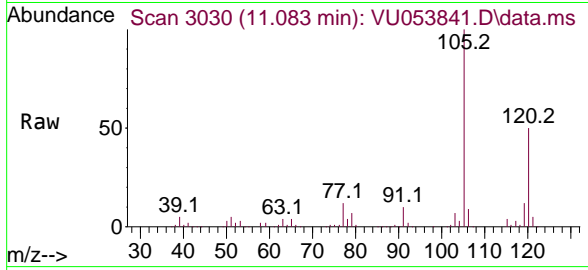




#62  
 1,3,5-Trimethylbenzene  
 Concen: 5.772 ug/L  
 RT: 11.083 min Scan# 3030  
 Delta R.T. 0.000 min  
 Lab File: VU053841.D  
 Acq: 24 Apr 2023 14:00

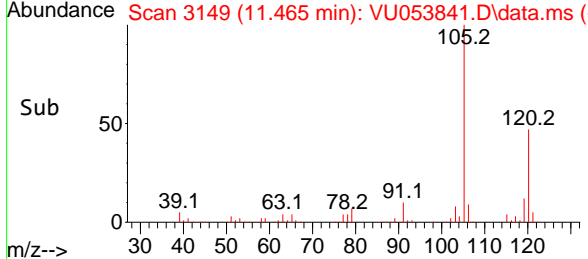
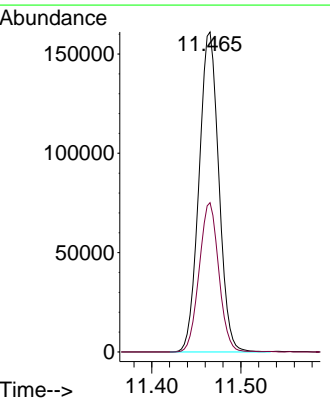
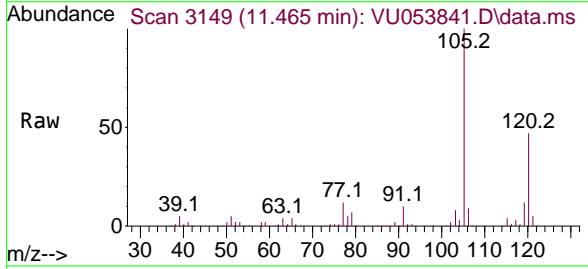
Instrument : MSVOA\_U  
 ClientSampleId : VICV025

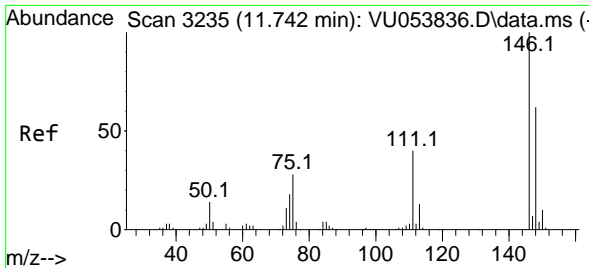
Tgt Ion:105 Resp: 242141  
 Ion Ratio Lower Upper  
 105 100  
 120 49.7 39.3 58.9



#63  
 1,2,4-Trimethylbenzene  
 Concen: 5.851 ug/L  
 RT: 11.465 min Scan# 3149  
 Delta R.T. 0.004 min  
 Lab File: VU053841.D  
 Acq: 24 Apr 2023 14:00

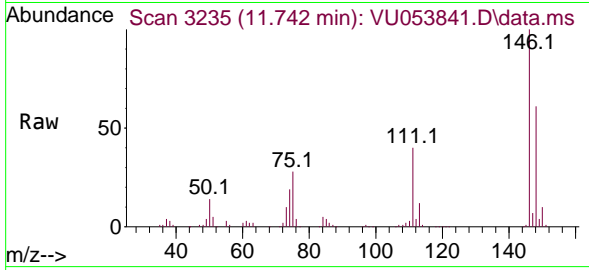
Tgt Ion:105 Resp: 248377  
 Ion Ratio Lower Upper  
 105 100  
 120 46.2 37.1 55.7



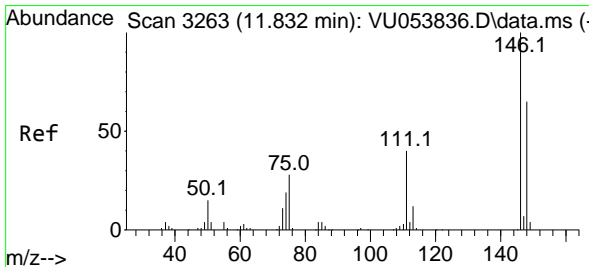
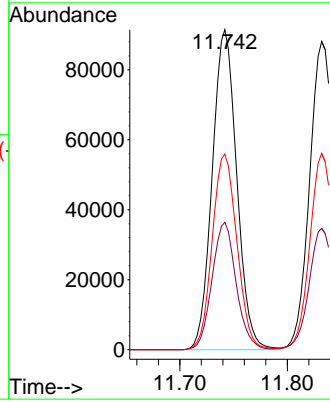
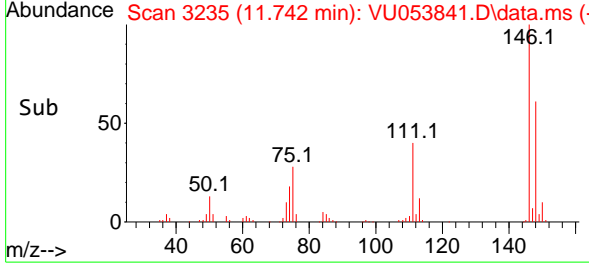


#64  
 1,3-Dichlorobenzene  
 Concen: 5.619 ug/L  
 RT: 11.742 min Scan# 3235  
 Delta R.T. 0.000 min  
 Lab File: VU053841.D  
 Acq: 24 Apr 2023 14:00

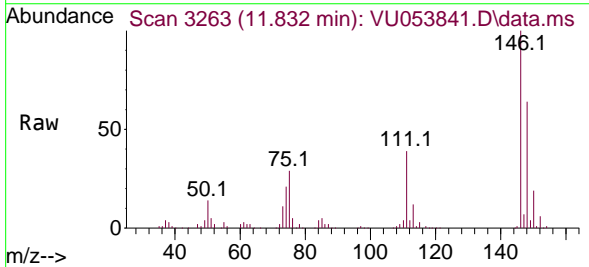
Instrument : MSVOA\_U  
 ClientSampleId : VICV025



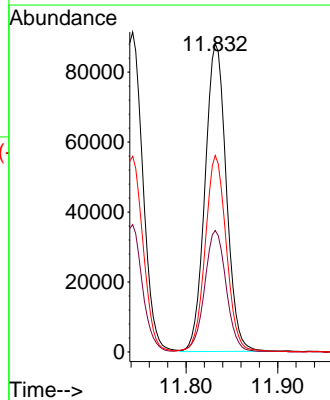
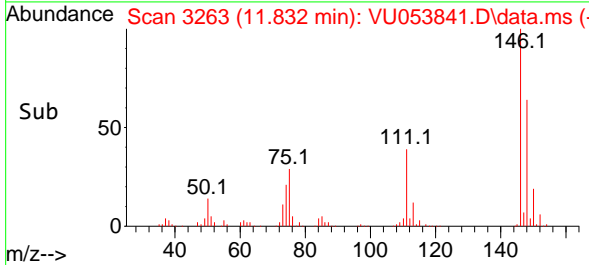
Tgt Ion:146 Resp: 144920  
 Ion Ratio Lower Upper  
 146 100  
 111 39.8 27.9 51.9  
 148 61.2 43.7 81.1

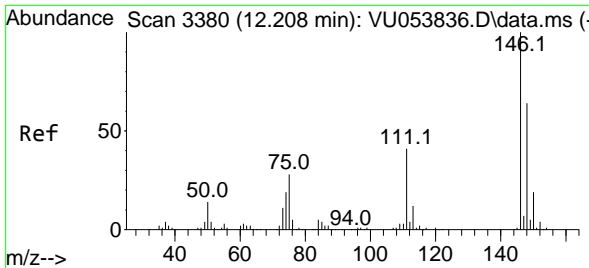


#65  
 1,4-Dichlorobenzene  
 Concen: 5.447 ug/L  
 RT: 11.832 min Scan# 3263  
 Delta R.T. 0.000 min  
 Lab File: VU053841.D  
 Acq: 24 Apr 2023 14:00



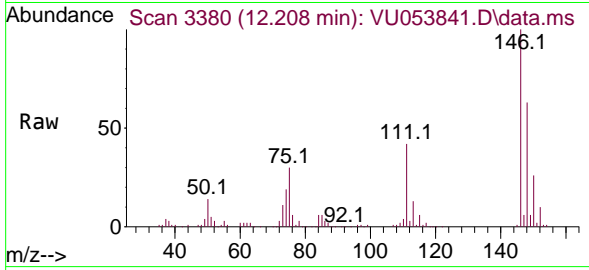
Tgt Ion:146 Resp: 141942  
 Ion Ratio Lower Upper  
 146 100  
 111 39.4 28.3 52.7  
 148 63.7 45.4 84.2



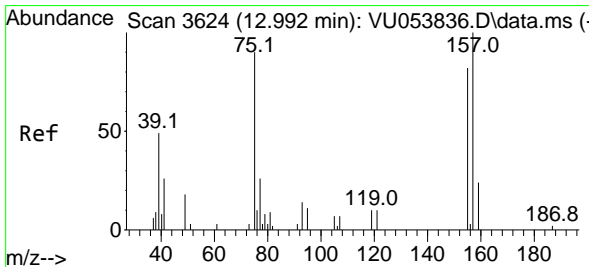
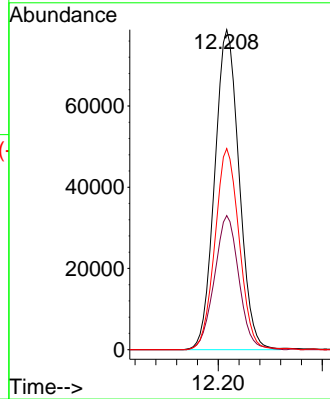
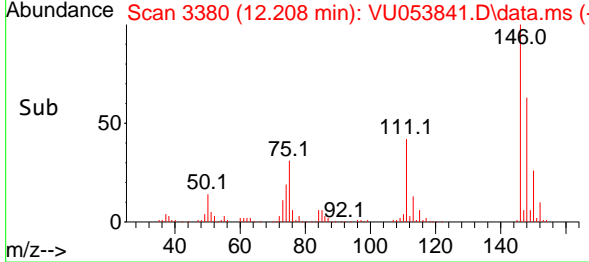


#67  
 1,2-Dichlorobenzene  
 Concen: 5.396 ug/L  
 RT: 12.208 min Scan# 3111  
 Delta R.T. 0.000 min  
 Lab File: VU053841.D  
 Acq: 24 Apr 2023 14:00

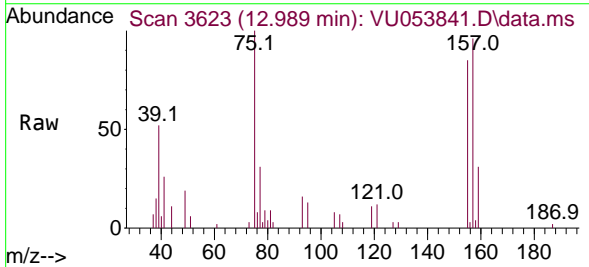
Instrument : MSVOA\_U  
 ClientSampleId : VICV025



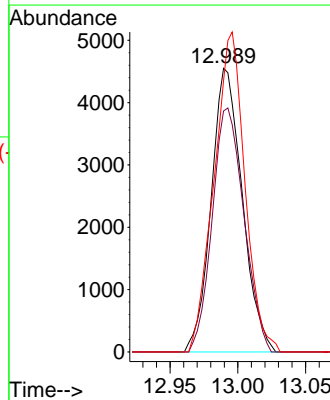
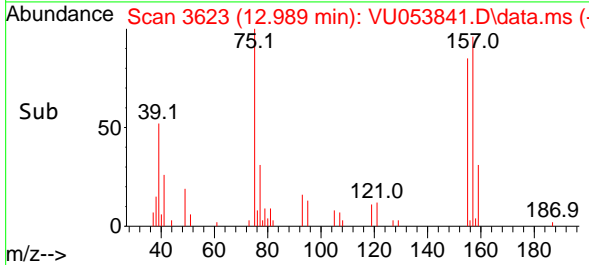
Tgt Ion:146 Resp: 128511  
 Ion Ratio Lower Upper  
 146 100  
 111 41.9 32.6 49.0  
 148 62.9 51.0 76.4

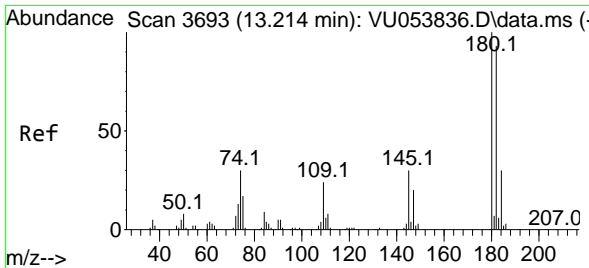


#68  
 1,2-Dibromo-3-chloropropane  
 Concen: 5.312 ug/L  
 RT: 12.989 min Scan# 3623  
 Delta R.T. -0.003 min  
 Lab File: VU053841.D  
 Acq: 24 Apr 2023 14:00



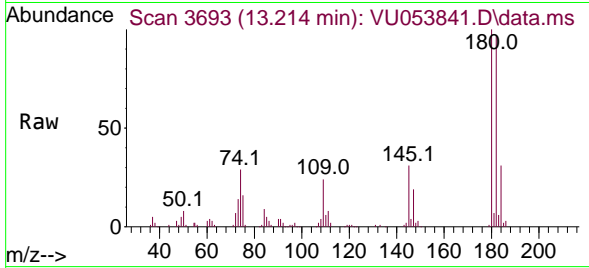
Tgt Ion: 75 Resp: 7245  
 Ion Ratio Lower Upper  
 75 100  
 155 85.0 72.8 109.2  
 157 95.6 89.1 133.7



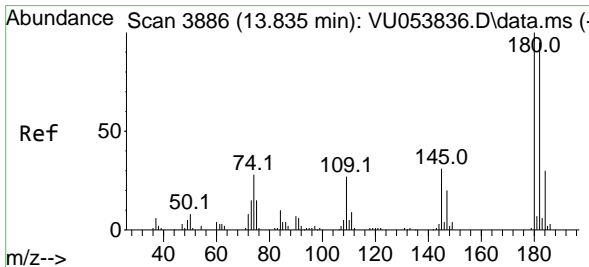
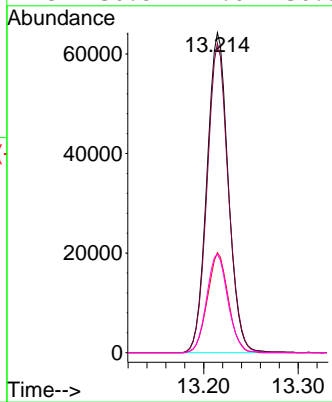
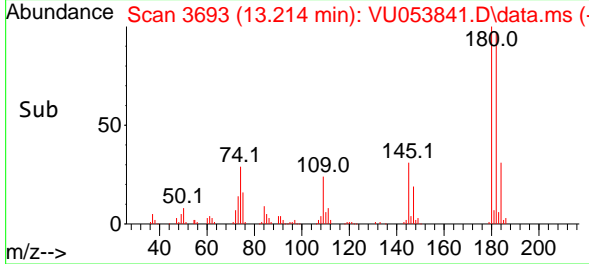


#69  
 1,3,5-Trichlorobenzene  
 Concen: 5.432 ug/L  
 RT: 13.214 min Scan# 3693  
 Delta R.T. 0.000 min  
 Lab File: VU053841.D  
 Acq: 24 Apr 2023 14:00

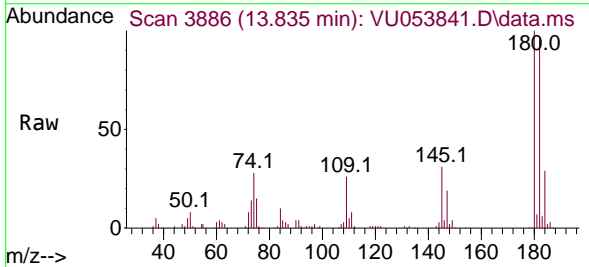
Instrument :  
 MSVOA\_U  
 ClientSampleId :  
 VICV025



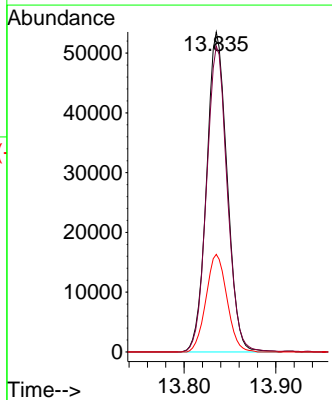
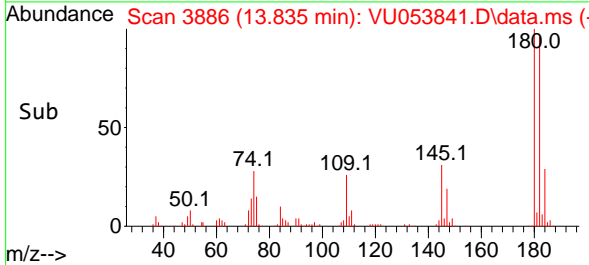
Tgt Ion:180 Resp: 100308  
 Ion Ratio Lower Upper  
 180 100  
 182 96.4 75.1 112.7  
 184 30.7 24.2 36.2  
 145 30.8 24.6 36.8

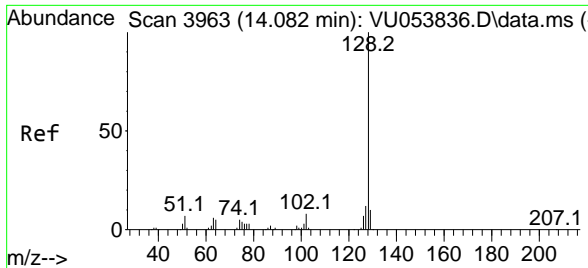


#70  
 1,2,4-trichlorobenzene  
 Concen: 4.969 ug/L  
 RT: 13.835 min Scan# 3886  
 Delta R.T. 0.000 min  
 Lab File: VU053841.D  
 Acq: 24 Apr 2023 14:00



Tgt Ion:180 Resp: 83535  
 Ion Ratio Lower Upper  
 180 100  
 182 96.0 75.5 113.3  
 145 31.1 25.8 38.6

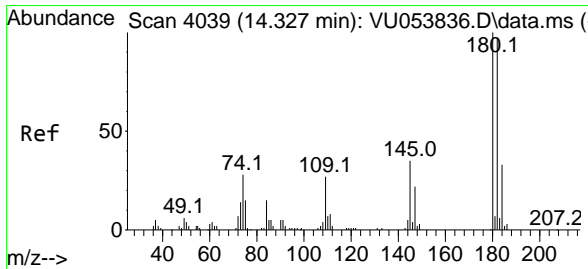
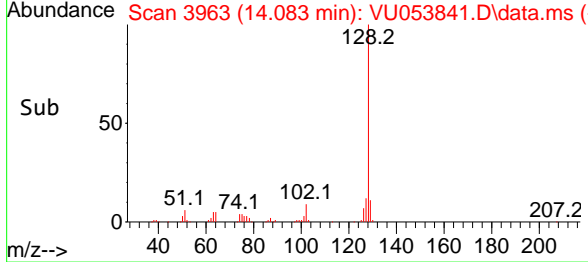
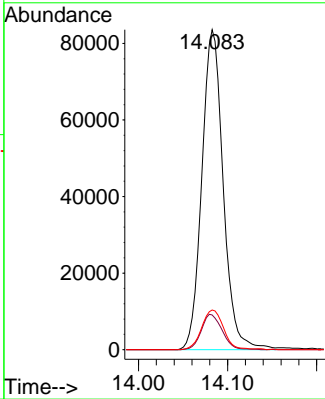
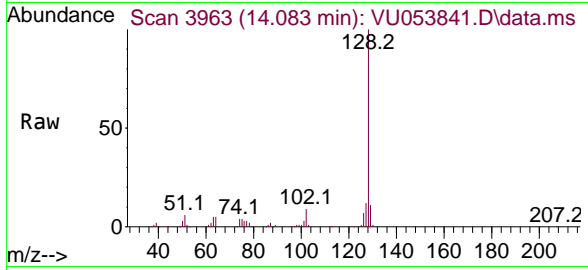




#71  
 Naphthalene  
 Concen: 4.679 ug/L  
 RT: 14.083 min Scan# 3963  
 Delta R.T. 0.000 min  
 Lab File: VU053841.D  
 Acq: 24 Apr 2023 14:00

Instrument : MSVOA\_U  
 ClientSampleId : VICV025

Tgt Ion	Resp	Lower	Upper
128	139056		
129	10.7	8.5	12.7
127	12.7	10.1	15.1



#72  
 1,2,3-Trichlorobenzene  
 Concen: 4.849 ug/L  
 RT: 14.327 min Scan# 4039  
 Delta R.T. 0.000 min  
 Lab File: VU053841.D  
 Acq: 24 Apr 2023 14:00

Tgt Ion	Resp	Lower	Upper
180	72735		
182	98.3	77.4	116.2
145	33.7	26.8	40.2

