

Data Path : Z:\voasrv\HPCHEM1\MSVOA_U\Data\VU042522\
 Data File : VU048269.D
 Acq On : 25 Apr 2022 15:15
 Operator : SY/MD
 Sample : N2293-24MSDME
 Misc : 6.24g/5.0mL/100uL/5.0mL/MSVOA_U/MEOH
 ALS Vial : 13 Sample Multiplier: 1

Instrument :
 MSVOA_U
 ClientSampleId :
 ETNQ5MEMSD

Quant Time: Apr 26 02:44:14 2022
 Quant Method : Z:\voasrv\HPCHEM1\MSVOA_U\Method\SFAMULM042522WMA.M
 Quant Title : VOC Analysis
 QLast Update : Tue Apr 26 02:41:26 2022
 Response via : Initial Calibration

Compound	R.T.	QIon	Response	Conc	Units	Dev(Min)
Internal Standards						
1) 1,4-Difluorobenzene	6.247	114	434382	50.000	ug/L	0.00
28) Chlorobenzene-d5	9.423	117	461740	50.000	ug/L	0.00
58) 1,4-Dichlorobenzene-d4	11.816	152	259642	50.000	ug/L	0.00
System Monitoring Compounds						
4) Vinyl Chloride-d3	1.597	65	81905	20.505	ug/L	0.00
Spiked Amount	50.000	Range 60 - 135	Recovery =	41.000%#		
7) Chloroethane-d5	1.871	69	23288	8.306	ug/L	-0.04
Spiked Amount	50.000	Range 70 - 130	Recovery =	16.620%#		
11) 1,1-Dichloroethene-d2	2.530	63	265112	41.422	ug/L	-0.04
Spiked Amount	50.000	Range 60 - 125	Recovery =	82.840%		
21) 2-Butanone-d5	4.639	46	305362	89.630	ug/L	0.02
Spiked Amount	100.000	Range 40 - 130	Recovery =	89.630%		
24) Chloroform-d	5.063	84	305618	42.182	ug/L	0.00
Spiked Amount	50.000	Range 70 - 125	Recovery =	84.360%		
26) 1,2-Dichloroethane-d4	5.700	65	185555	43.164	ug/L	0.00
Spiked Amount	50.000	Range 70 - 125	Recovery =	86.320%		
32) Benzene-d6	5.719	84	634015	43.537	ug/L	0.00
Spiked Amount	50.000	Range 70 - 125	Recovery =	87.080%		
36) 1,2-Dichloropropane-d6	6.690	67	212027	44.040	ug/L	0.00
Spiked Amount	50.000	Range 70 - 120	Recovery =	88.080%		
41) Toluene-d8	7.899	98	605820	45.895	ug/L	0.00
Spiked Amount	50.000	Range 80 - 120	Recovery =	91.780%		
43) trans-1,3-Dichloroprop...	8.185	79	97192	45.750	ug/L	0.00
Spiked Amount	50.000	Range 60 - 125	Recovery =	91.500%		
47) 2-Hexanone-d5	8.658	63	244441	94.106	ug/L	0.03
Spiked Amount	100.000	Range 45 - 130	Recovery =	94.110%		
56) 1,1,2,2-Tetrachloroeth...	10.767	84	351938	41.681	ug/L	0.00
Spiked Amount	50.000	Range 65 - 120	Recovery =	83.360%		
66) 1,2-Dichlorobenzene-d4	12.198	152	258778	44.306	ug/L	0.00
Spiked Amount	50.000	Range 80 - 120	Recovery =	88.620%		
Target Compounds						
2) Dichlorodifluoromethane	1.379	85	71808	21.877	ug/L	95
3) Chloromethane	1.520	50	164431	43.768	ug/L	100
5) Vinyl chloride	1.604	62	81837	21.617	ug/L	92
6) Bromomethane	1.826	94	48376	27.804	ug/L	97
8) Chloroethane	1.890	64	17733	8.284	ug/L	99
9) Trichlorofluoromethane	2.067	101	91464	18.538	ug/L	87
10) 1,1,2-Trichloro-1,2,2-...	2.536	101	138260	42.252	ug/L	99
12) 1,1-Dichloroethene	2.539	96	119510	41.841	ug/L	89
13) Acetone	2.649	43	164553	75.236	ug/L	98
14) Carbon disulfide	2.752	76	298820	42.925	ug/L	99
15) Methyl Acetate	2.954	43	196784	45.324	ug/L	99
16) Methylene chloride	3.031	84	163792	44.479	ug/L	98
17) trans-1,2-Dichloroethene	3.330	96	133664	45.046	ug/L	98
18) Methyl tert-butyl Ether	3.372	73	470040	48.011	ug/L	99
19) 1,1-Dichloroethane	3.861	63	247610	39.905	ug/L	98
20) cis-1,2-Dichloroethene	4.661	96	164493	45.990	ug/L	99
22) 2-Butanone	4.719	43	291465	90.119	ug/L	99
23) Bromochloromethane	4.973	128	89080	44.609	ug/L	98
25) Chloroform	5.089	83	284497	44.900	ug/L	99

Data Path : Z:\voasrv\HPCHEM1\MSVOA_U\Data\VU042522\
 Data File : VU048269.D
 Acq On : 25 Apr 2022 15:15
 Operator : SY/MD
 Sample : N2293-24MSDME
 Misc : 6.24g/5.0mL/100uL/5.0mL/MSVOA_U/MEOH
 ALS Vial : 13 Sample Multiplier: 1

Instrument :
 MSVOA_U
 ClientSampleId :
 ETNQ5MEMSD

Quant Time: Apr 26 02:44:14 2022
 Quant Method : Z:\voasrv\HPCHEM1\MSVOA_U\Method\SFAMULM042522WMA.M
 Quant Title : VOC Analysis
 QLast Update : Tue Apr 26 02:41:26 2022
 Response via : Initial Calibration

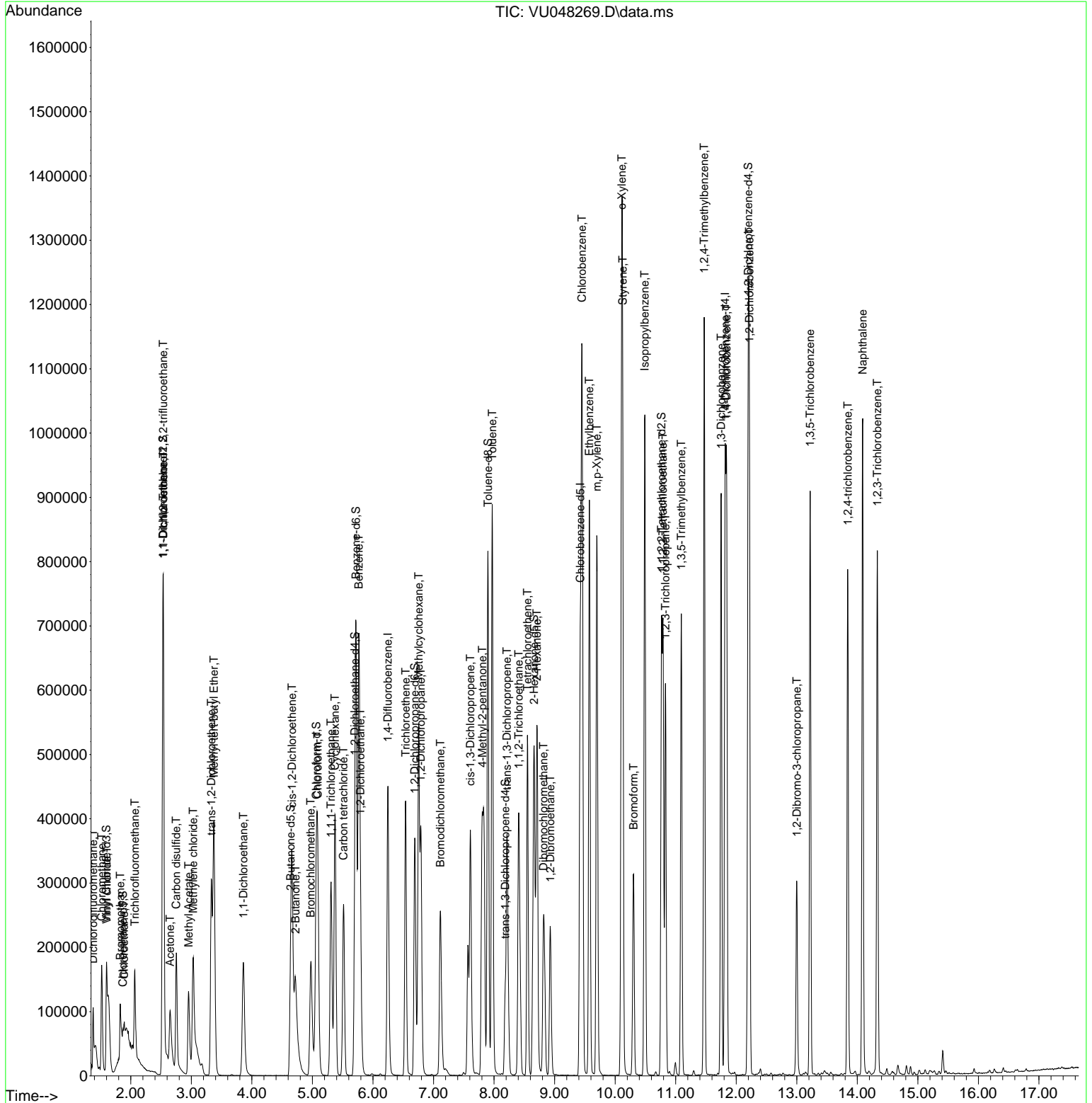
Compound	R.T.	QIon	Response	Conc	Units	Dev(Min)
27) 1,2-Dichloroethane	5.793	62	212583	45.997	ug/L	99
29) Cyclohexane	5.372	56	214127	49.082	ug/L	98
30) 1,1,1-Trichloroethane	5.308	97	230465	44.137	ug/L	99
31) Carbon tetrachloride	5.514	117	192082	43.161	ug/L	100
33) Benzene	5.768	78	662908	48.490	ug/L	100
34) Trichloroethene	6.539	95	154785	46.192	ug/L	98
35) Methylcyclohexane	6.755	83	229864	48.861	ug/L	99
37) 1,2-Dichloropropane	6.790	63	179029	46.028	ug/L	99
38) Bromodichloromethane	7.115	83	226783	46.169	ug/L	100
39) cis-1,3-Dichloropropene	7.610	75	266825	48.785	ug/L	100
40) 4-Methyl-2-pentanone	7.806	43	244939	41.752	ug/L	100
42) Toluene	7.970	91	725816	50.569	ug/L	100
44) trans-1,3-Dichloropropene	8.214	75	259185	48.508	ug/L	98
45) 1,1,2-Trichloroethane	8.407	97	190003	46.560	ug/L	99
46) Tetrachloroethene	8.552	164	130128	45.248	ug/L	97
48) 2-Hexanone	8.710	43	480862	98.156	ug/L	98
49) Dibromochloromethane	8.819	129	199629	44.518	ug/L	100
50) 1,2-Dibromoethane	8.928	107	192264	46.459	ug/L	97
51) Chlorobenzene	9.452	112	734320	70.978	ug/L	99
52) Ethylbenzene	9.574	91	730648	49.154	ug/L	99
53) m,p-Xylene	9.697	106	290524	49.528	ug/L	99
54) o-Xylene	10.108	106	292487	49.496	ug/L	100
55) Styrene	10.124	104	497604	49.430	ug/L	99
57) 1,1,2,2-Tetrachloroethane	10.790	83	350866	43.564	ug/L	99
59) Bromoform	10.304	173	163588	43.414	ug/L	99
60) 1,2,3-Trichloropropane	10.832	75	267557	44.173	ug/L	99
61) Isopropylbenzene	10.491	105	752240	51.817	ug/L	100
62) 1,3,5-Trimethylbenzene	11.092	105	405043	52.936	ug/L	100
63) 1,2,4-Trimethylbenzene	11.471	105	651800	55.407	ug/L	100
64) 1,3-Dichlorobenzene	11.751	146	392496	48.224	ug/L	99
65) 1,4-Dichlorobenzene	11.841	146	389202	46.841	ug/L	98
67) 1,2-Dichlorobenzene	12.217	146	399503	46.595	ug/L	99
68) 1,2-Dibromo-3-chloropr...	12.999	75	72572	44.882	ug/L	91
69) 1,3,5-Trichlorobenzene	13.221	180	302028	49.940	ug/L	100
70) 1,2,4-trichlorobenzene	13.841	180	257655	53.926	ug/L	100
71) Naphthalene	14.089	128	834084	61.000	ug/L	100
72) 1,2,3-Trichlorobenzene	14.330	180	270245	55.190	ug/L	98

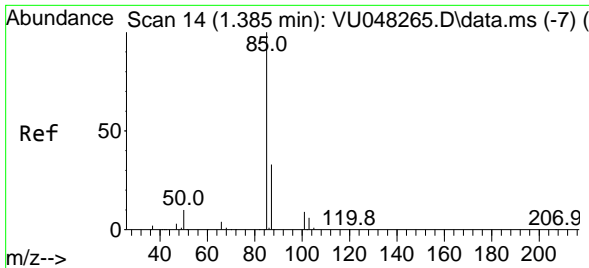
(#) = qualifier out of range (m) = manual integration (+) = signals summed

Data Path : Z:\voasrv\HPCHEM1\MSVOA_U\Data\VU042522\
 Data File : VU048269.D
 Acq On : 25 Apr 2022 15:15
 Operator : SY/MD
 Sample : N2293-24MSDME
 Misc : 6.24g/5.0mL/100uL/5.0mL/MSVOA_U/MEOH
 ALS Vial : 13 Sample Multiplier: 1

Instrument :
 MSVOA_U
 ClientSampleId :
 ETNQ5MEMSD

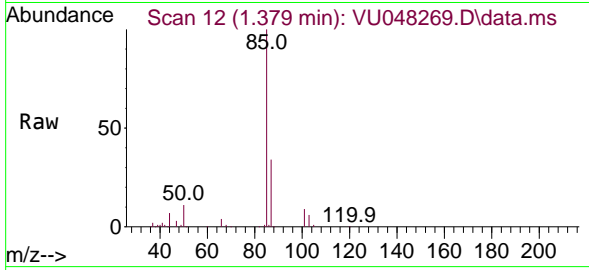
Quant Time: Apr 26 02:44:14 2022
 Quant Method : Z:\voasrv\HPCHEM1\MSVOA_U\Method\SFAMULM042522WMA.M
 Quant Title : VOC Analysis
 QLast Update : Tue Apr 26 02:41:26 2022
 Response via : Initial Calibration



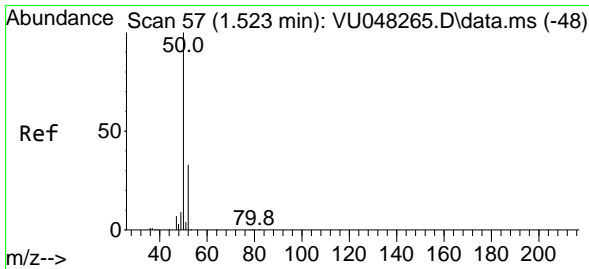
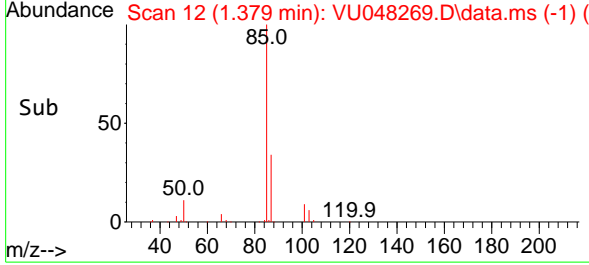
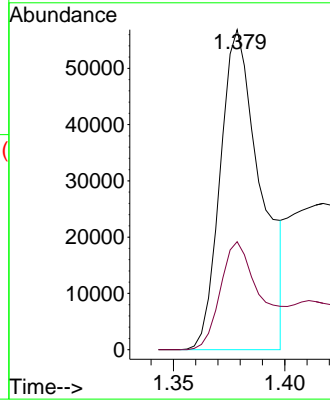


#2
 Dichlorodifluoromethane
 Concen: 21.877 ug/L
 RT: 1.379 min Scan# 11
 Delta R.T. -0.006 min
 Lab File: VU048269.D
 Acq: 25 Apr 2022 15:15

Instrument : MSVOA_U
 ClientSampleId : ETNQ5MEMSD

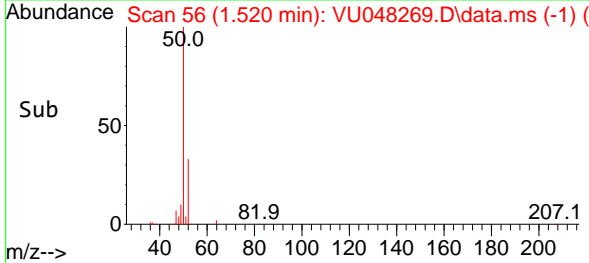
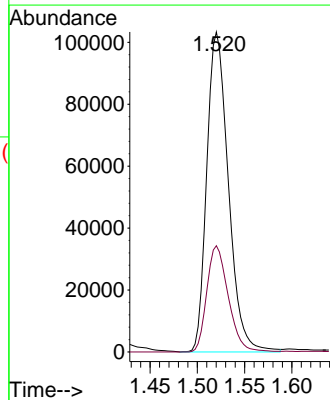
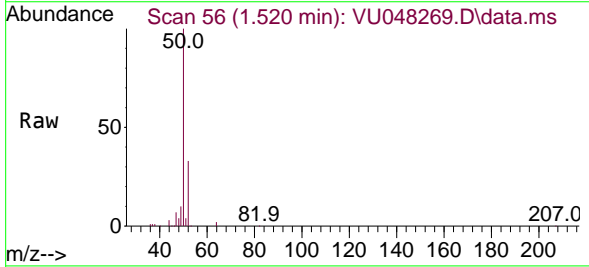


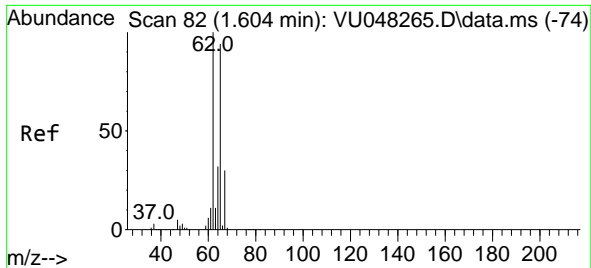
Tgt Ion: 85 Resp: 71808
 Ion Ratio Lower Upper
 85 100
 87 35.5 26.1 39.1



#3
 Chloromethane
 Concen: 43.768 ug/L
 RT: 1.520 min Scan# 56
 Delta R.T. -0.003 min
 Lab File: VU048269.D
 Acq: 25 Apr 2022 15:15

Tgt Ion: 50 Resp: 164431
 Ion Ratio Lower Upper
 50 100
 52 33.2 23.2 43.2

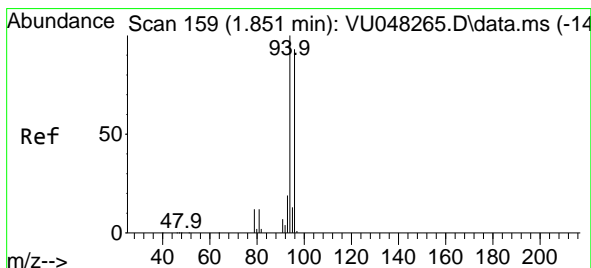
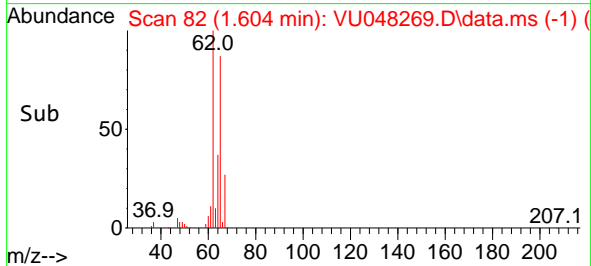
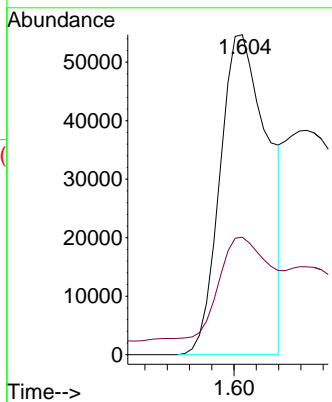
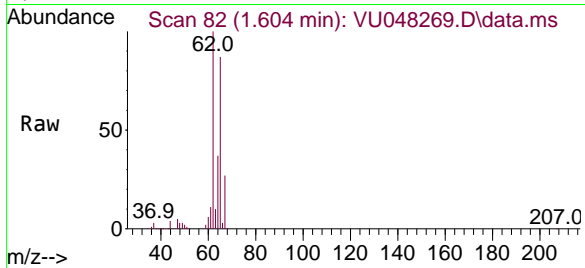




#5
 Vinyl chloride
 Concen: 21.617 ug/L
 RT: 1.604 min Scan# 81
 Delta R.T. -0.000 min
 Lab File: VU048269.D
 Acq: 25 Apr 2022 15:15

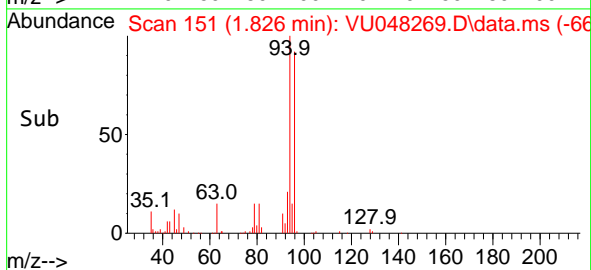
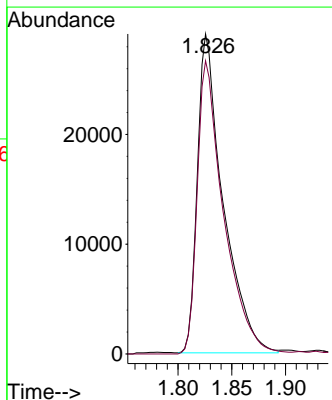
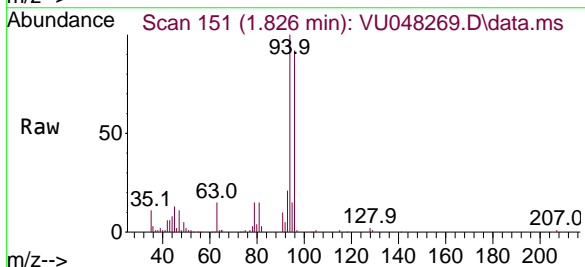
Instrument :
 MSVOA_U
 ClientSampleId :
 ETNQ5MEMSD

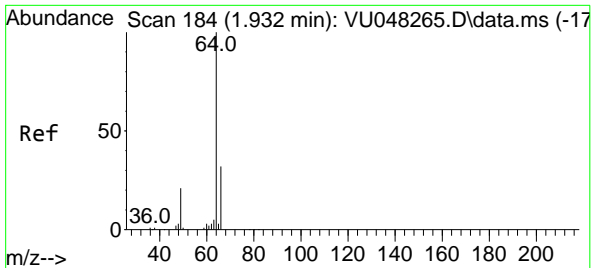
Tgt Ion: 62 Resp: 81837
 Ion Ratio Lower Upper
 62 100
 64 36.7 22.5 41.7



#6
 Bromomethane
 Concen: 27.804 ug/L
 RT: 1.826 min Scan# 151
 Delta R.T. -0.026 min
 Lab File: VU048269.D
 Acq: 25 Apr 2022 15:15

Tgt Ion: 94 Resp: 48376
 Ion Ratio Lower Upper
 94 100
 96 91.6 65.8 122.2

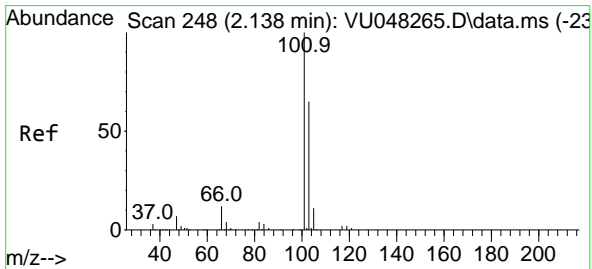
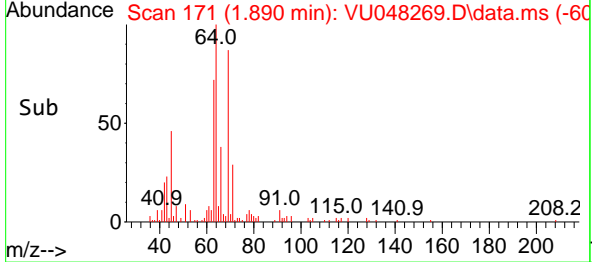
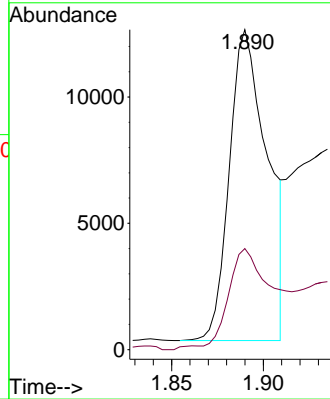
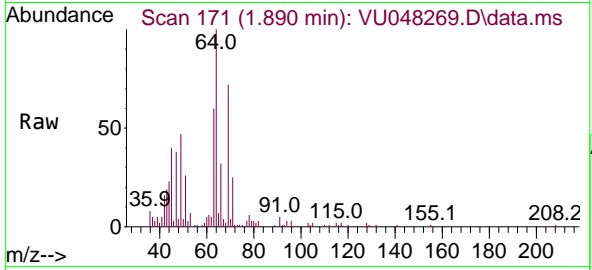




#8
 Chloroethane
 Concen: 8.284 ug/L
 RT: 1.890 min Scan# 11
 Delta R.T. -0.042 min
 Lab File: VU048269.D
 Acq: 25 Apr 2022 15:15

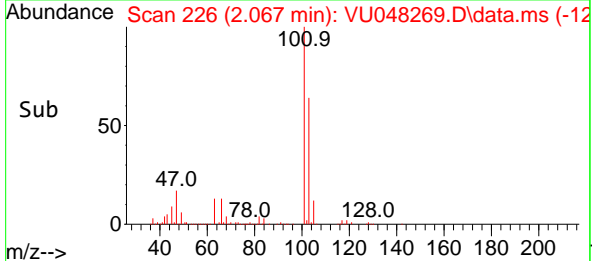
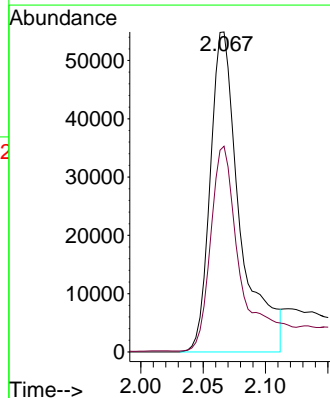
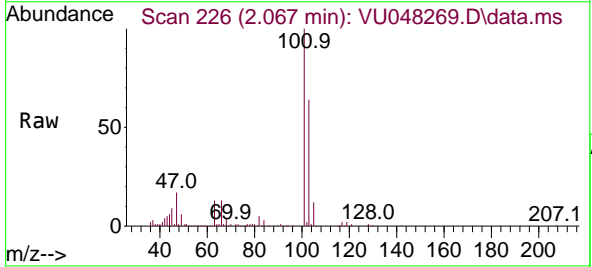
Instrument : MSVOA_U
 ClientSampleId : ETNQ5MEMSD

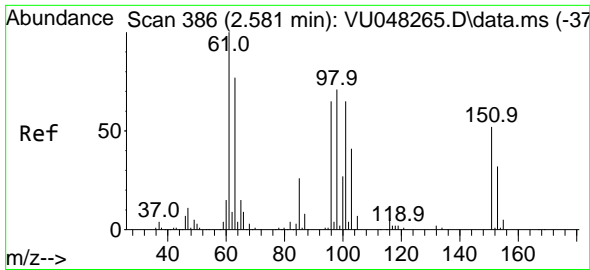
Tgt Ion: 64 Resp: 17733
 Ion Ratio Lower Upper
 64 100
 66 31.6 21.9 40.7



#9
 Trichlorofluoromethane
 Concen: 18.538 ug/L
 RT: 2.067 min Scan# 226
 Delta R.T. -0.071 min
 Lab File: VU048269.D
 Acq: 25 Apr 2022 15:15

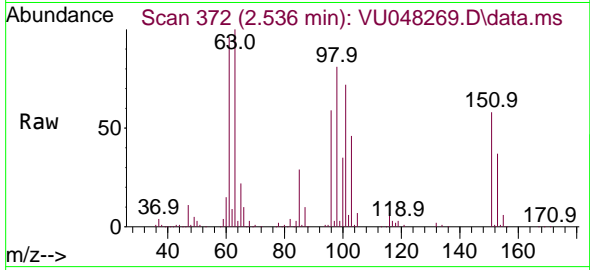
Tgt Ion:101 Resp: 91464
 Ion Ratio Lower Upper
 101 100
 103 54.9 51.9 77.9



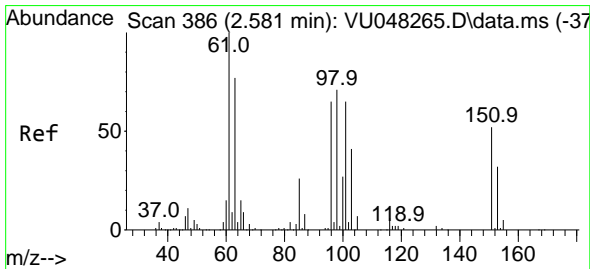
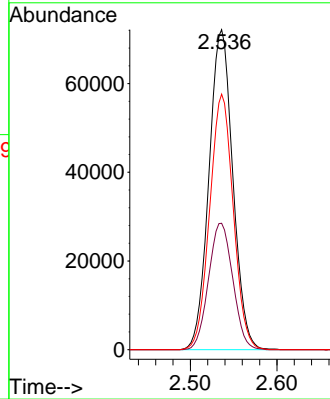
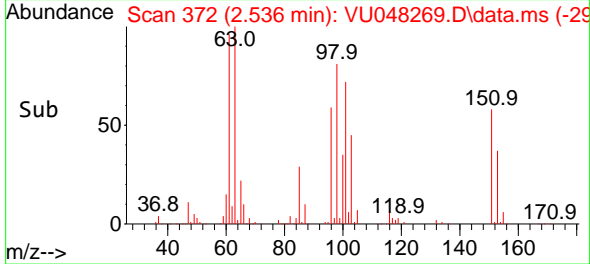


#10
 1,1,2-Trichloro-1,2,2-trifluoroethane
 Concen: 42.252 ug/L
 RT: 2.536 min Scan# 311
 Delta R.T. -0.045 min
 Lab File: VU048269.D
 Acq: 25 Apr 2022 15:15

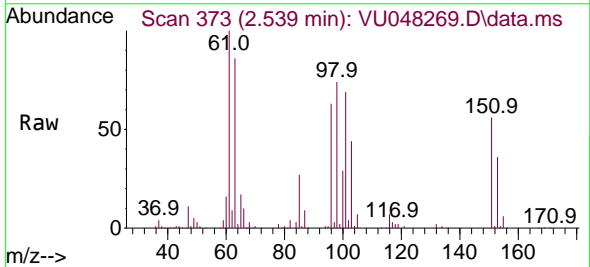
Instrument :
 MSVOA_U
 ClientSampleId :
 ETNQ5MEMSD



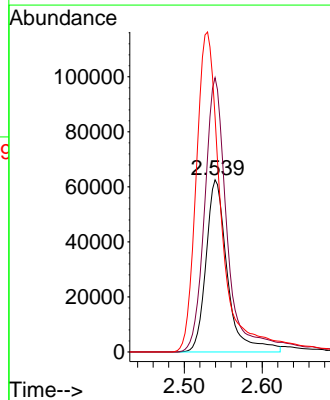
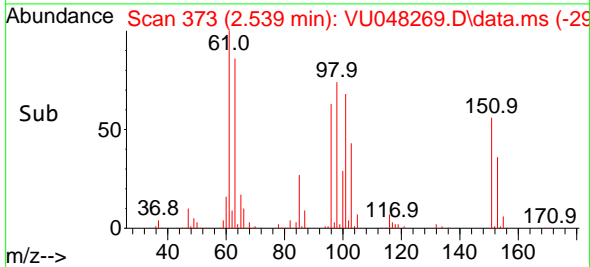
Tgt Ion:101 Resp: 138260
 Ion Ratio Lower Upper
 101 100
 85 40.1 32.6 48.8
 151 78.9 64.1 96.1

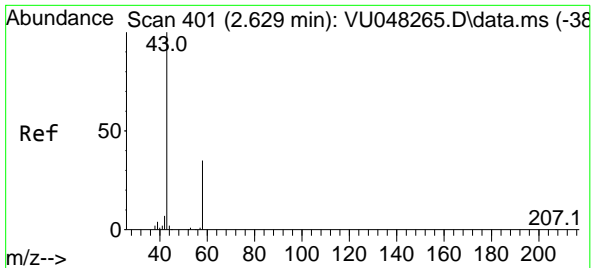


#12
 1,1-Dichloroethene
 Concen: 41.841 ug/L
 RT: 2.539 min Scan# 373
 Delta R.T. -0.042 min
 Lab File: VU048269.D
 Acq: 25 Apr 2022 15:15



Tgt Ion: 96 Resp: 119510
 Ion Ratio Lower Upper
 96 100
 61 159.3 107.9 200.3
 63 136.4 80.3 149.1

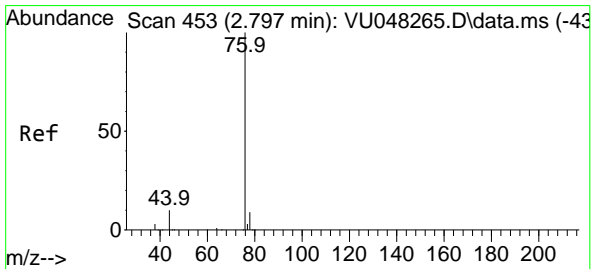
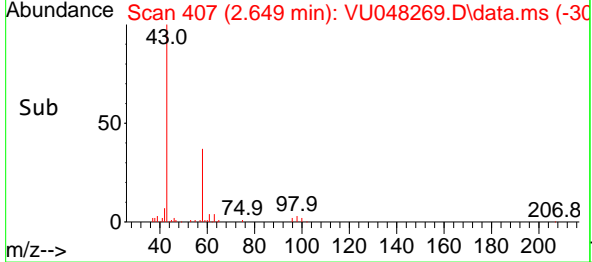
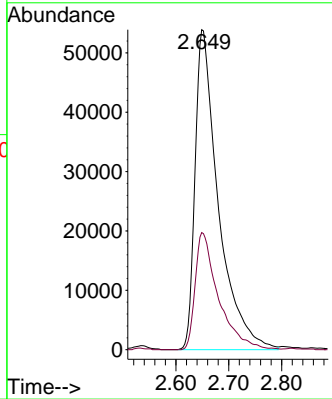
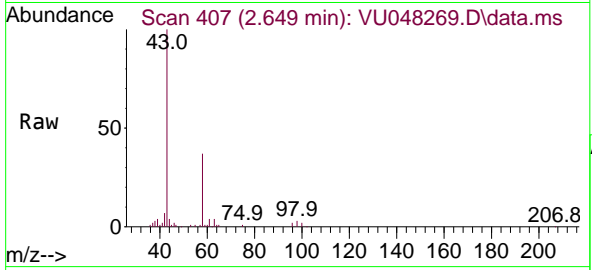




#13
 Acetone
 Concen: 75.236 ug/L
 RT: 2.649 min Scan# 407
 Delta R.T. 0.019 min
 Lab File: VU048269.D
 Acq: 25 Apr 2022 15:15

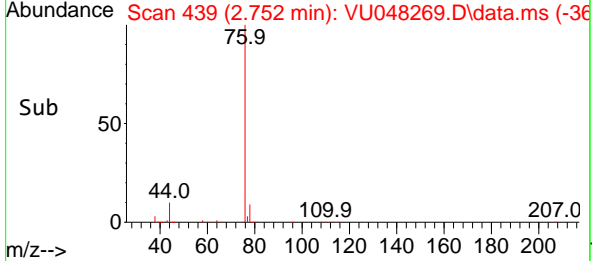
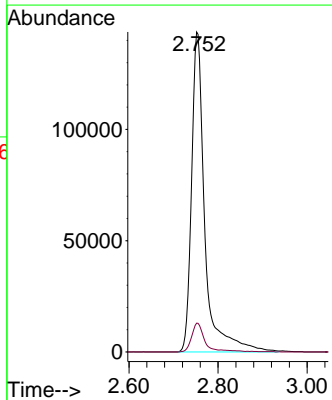
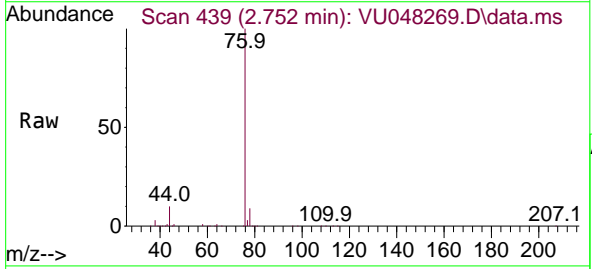
Instrument : MSVOA_U
 ClientSampleId : ETNQ5MEMSD

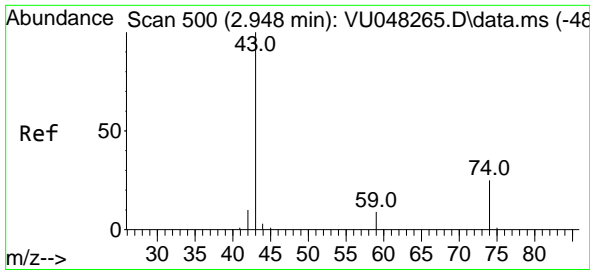
Tgt Ion: 43 Resp: 164553
 Ion Ratio Lower Upper
 43 100
 58 36.5 0.0 71.2



#14
 Carbon disulfide
 Concen: 42.925 ug/L
 RT: 2.752 min Scan# 439
 Delta R.T. -0.045 min
 Lab File: VU048269.D
 Acq: 25 Apr 2022 15:15

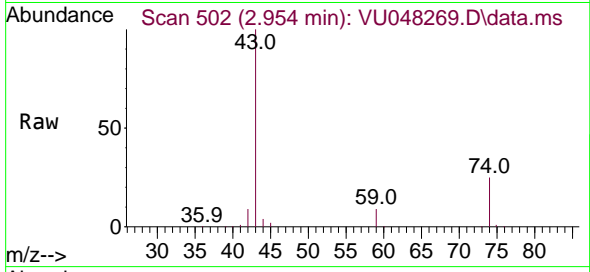
Tgt Ion: 76 Resp: 298820
 Ion Ratio Lower Upper
 76 100
 78 9.0 7.4 11.2



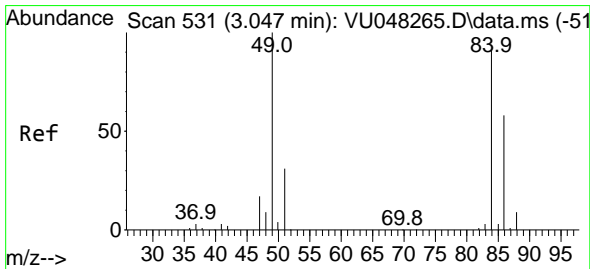
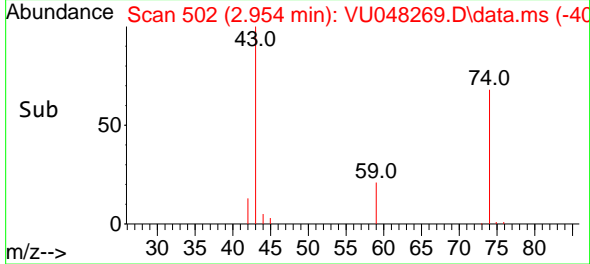
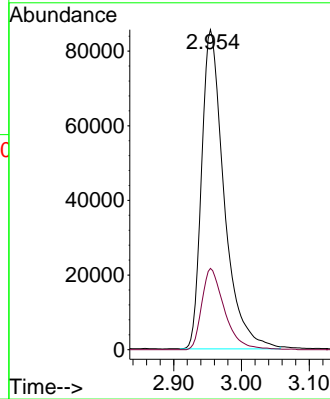


#15
 Methyl Acetate
 Concen: 45.324 ug/L
 RT: 2.954 min Scan# 500
 Delta R.T. 0.006 min
 Lab File: VU048269.D
 Acq: 25 Apr 2022 15:15

Instrument : MSVOA_U
 ClientSampleId : ETNQ5MEMSD

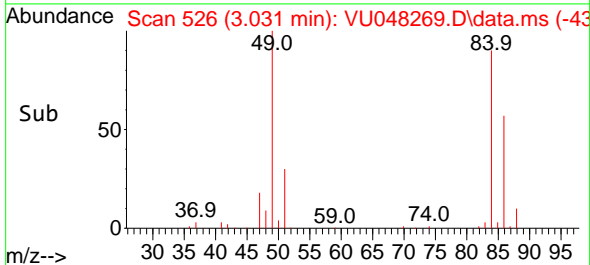
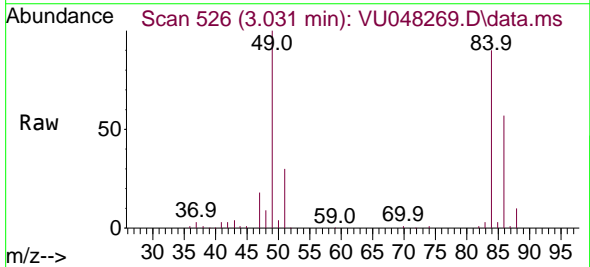
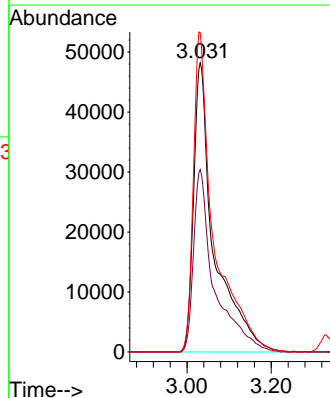


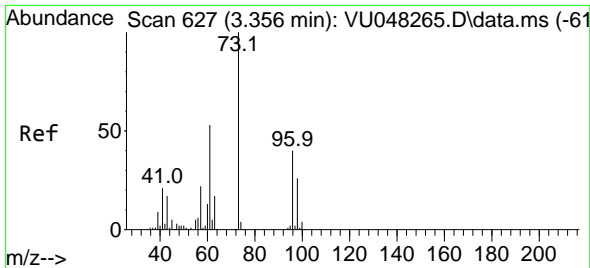
Tgt Ion: 43 Resp: 196784
 Ion Ratio Lower Upper
 43 100
 74 25.6 21.0 31.6



#16
 Methylene chloride
 Concen: 44.479 ug/L
 RT: 3.031 min Scan# 526
 Delta R.T. -0.016 min
 Lab File: VU048269.D
 Acq: 25 Apr 2022 15:15

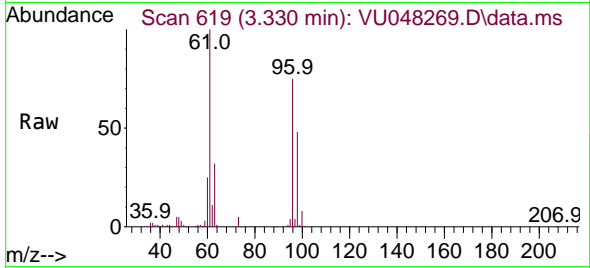
Tgt Ion: 84 Resp: 163792
 Ion Ratio Lower Upper
 84 100
 86 63.1 45.4 84.2
 49 110.5 79.2 147.0





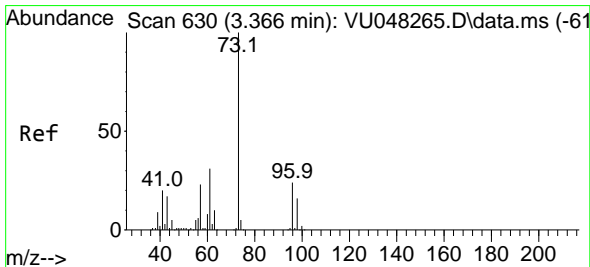
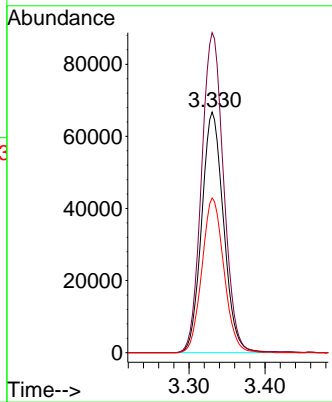
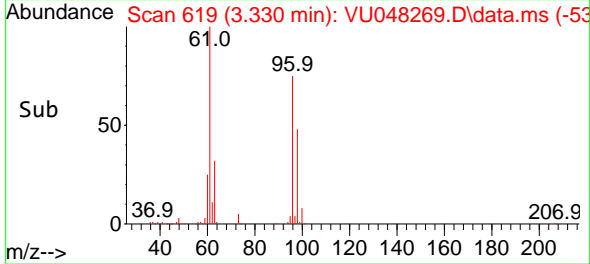
#17
 trans-1,2-Dichloroethene
 Concen: 45.046 ug/L
 RT: 3.330 min Scan# 619
 Delta R.T. -0.026 min
 Lab File: VU048269.D
 Acq: 25 Apr 2022 15:15

Instrument : MSVOA_U
 ClientSampleId : ETNQ5MEMSD

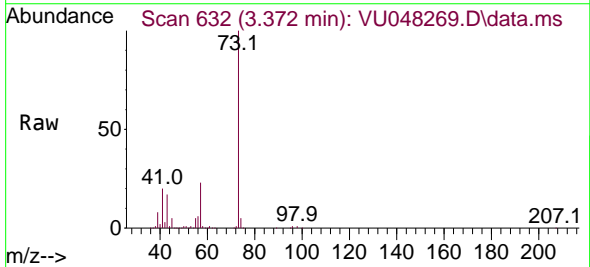


Tgt Ion: 96 Resp: 133664

Ion	Ratio	Lower	Upper
96	100		
61	133.0	95.2	176.8
98	64.3	44.7	83.1

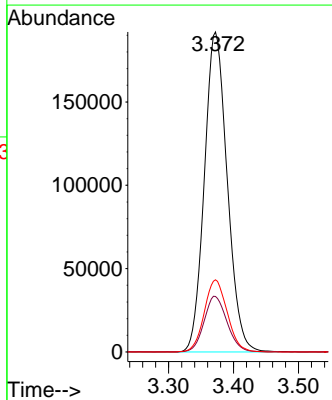
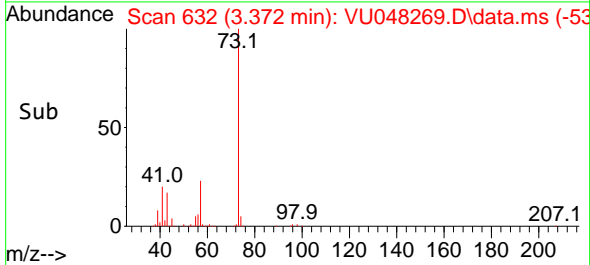


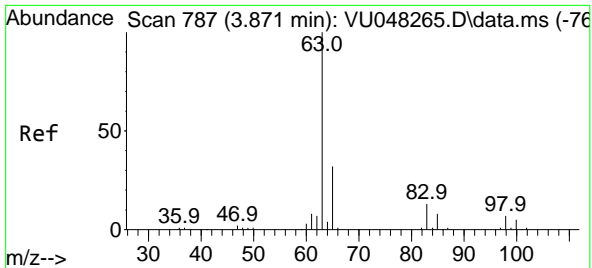
#18
 Methyl tert-butyl Ether
 Concen: 48.011 ug/L
 RT: 3.372 min Scan# 632
 Delta R.T. 0.006 min
 Lab File: VU048269.D
 Acq: 25 Apr 2022 15:15



Tgt Ion: 73 Resp: 470040

Ion	Ratio	Lower	Upper
73	100		
43	17.5	13.8	20.6
57	22.7	17.9	26.9



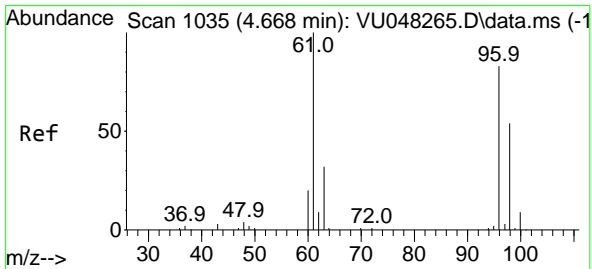
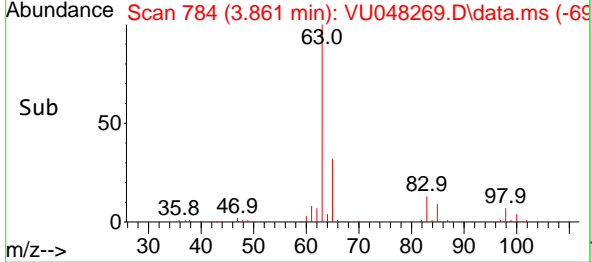
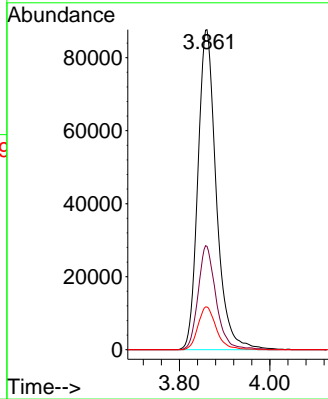
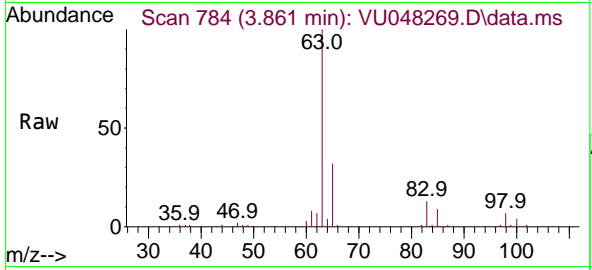


#19
 1,1-Dichloroethane
 Concen: 39.905 ug/L
 RT: 3.861 min Scan# 784
 Delta R.T. -0.010 min
 Lab File: VU048269.D
 Acq: 25 Apr 2022 15:15

Instrument : MSVOA_U
 ClientSampleId : ETNQ5MEMSD

Tgt Ion: 63 Resp: 247610

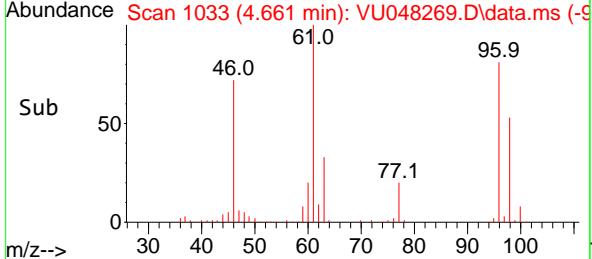
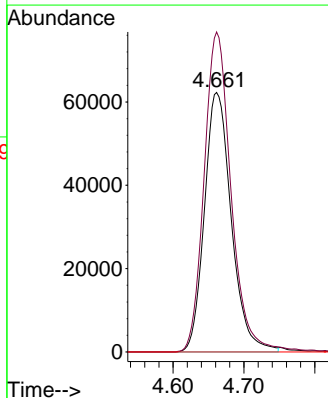
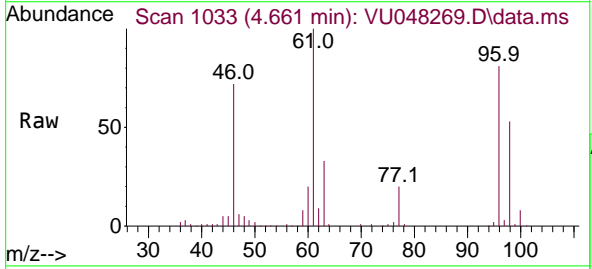
Ion	Ratio	Lower	Upper
63	100		
65	32.3	22.0	40.8
83	13.3	8.8	16.4

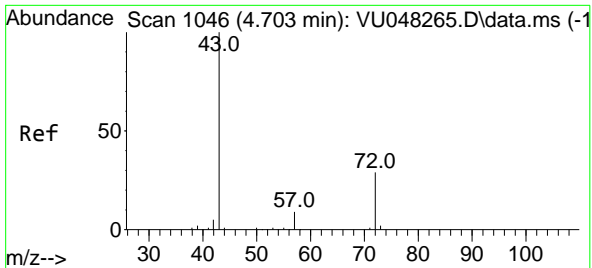


#20
 cis-1,2-Dichloroethene
 Concen: 45.990 ug/L
 RT: 4.661 min Scan# 1033
 Delta R.T. -0.006 min
 Lab File: VU048269.D
 Acq: 25 Apr 2022 15:15

Tgt Ion: 96 Resp: 164493

Ion	Ratio	Lower	Upper
96	100		
61	123.3	87.0	161.6
68	0.0	0.0	0.0

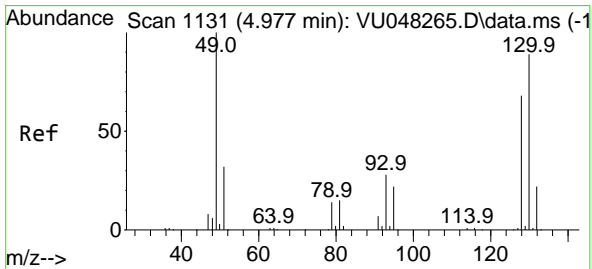
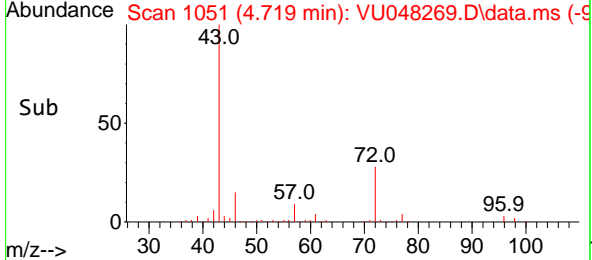
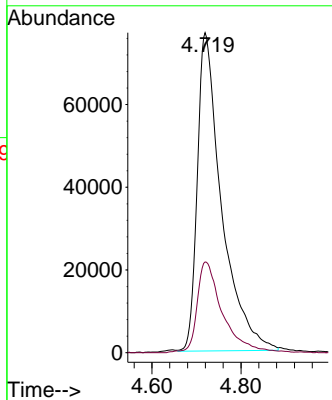
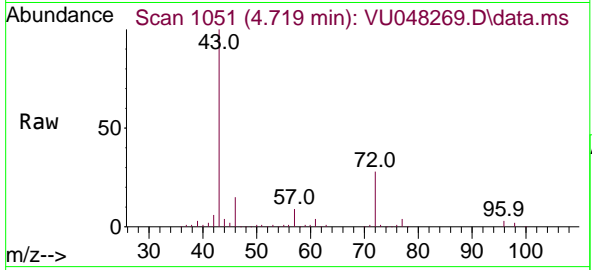




#22
 2-Butanone
 Concen: 90.119 ug/L
 RT: 4.719 min Scan# 1051
 Delta R.T. 0.016 min
 Lab File: VU048269.D
 Acq: 25 Apr 2022 15:15

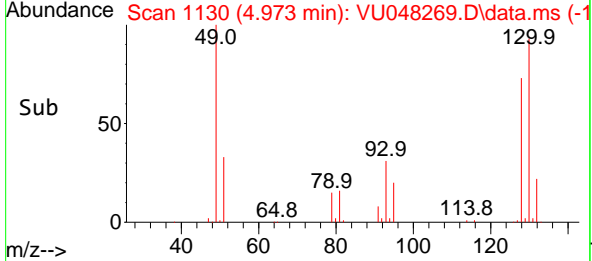
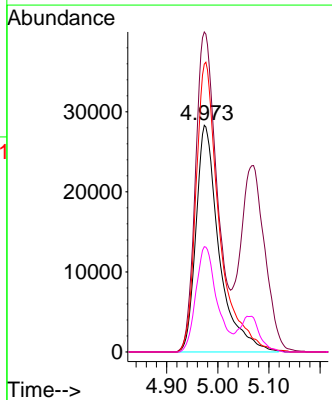
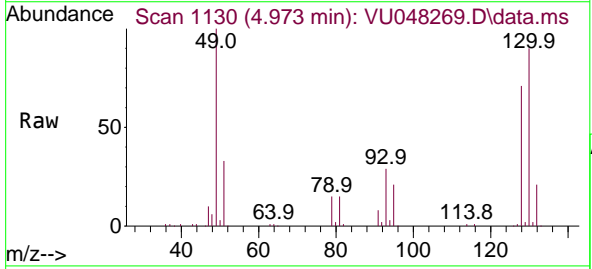
Instrument : MSVOA_U
 ClientSampleId : ETNQ5MEMSD

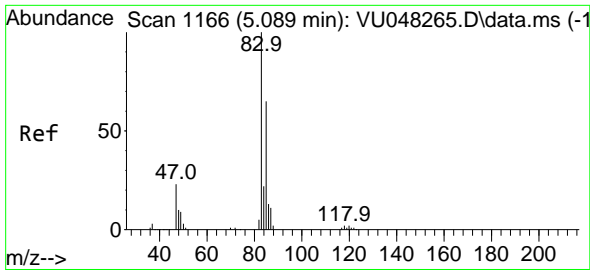
Tgt Ion: 43 Resp: 291465
 Ion Ratio Lower Upper
 43 100
 72 28.5 14.6 43.8



#23
 Bromochloromethane
 Concen: 44.609 ug/L
 RT: 4.973 min Scan# 1130
 Delta R.T. -0.003 min
 Lab File: VU048269.D
 Acq: 25 Apr 2022 15:15

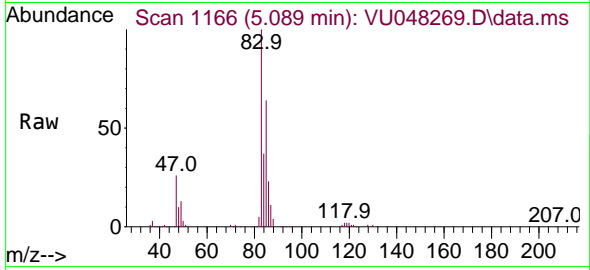
Tgt Ion:128 Resp: 89080
 Ion Ratio Lower Upper
 128 100
 49 141.1 101.3 188.1
 130 126.9 89.0 165.2
 51 46.4 36.0 54.0



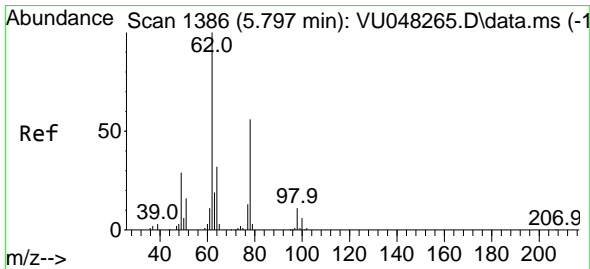
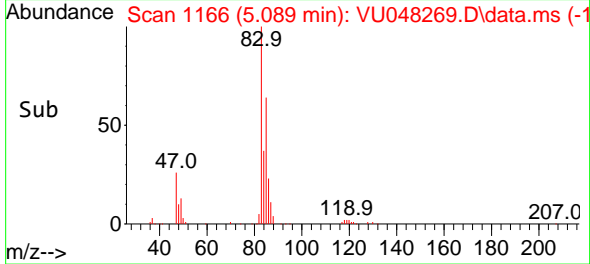
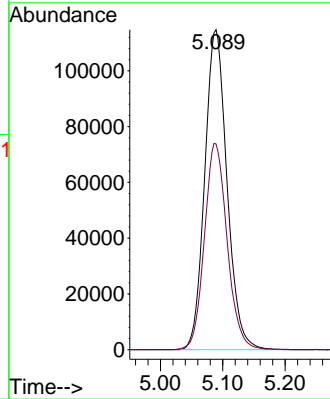


#25
 Chloroform
 Concen: 44.900 ug/L
 RT: 5.089 min Scan# 1166
 Delta R.T. -0.000 min
 Lab File: VU048269.D
 Acq: 25 Apr 2022 15:15

Instrument : MSVOA_U
 ClientSampleId : VU048269.D
 ETNQ5MEMSD

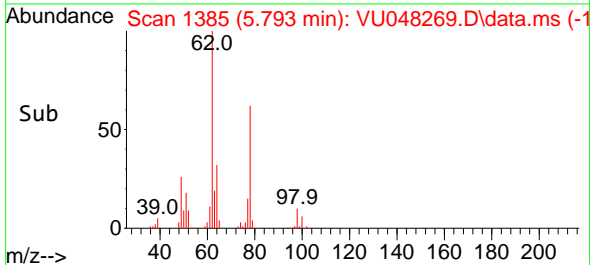
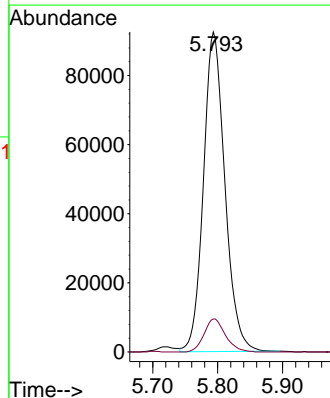
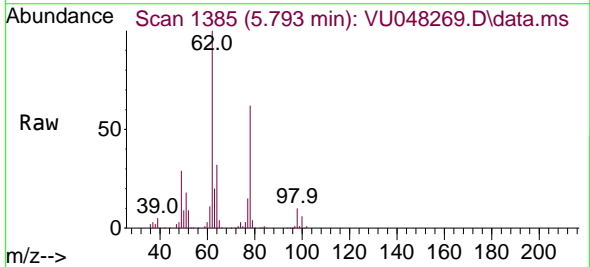


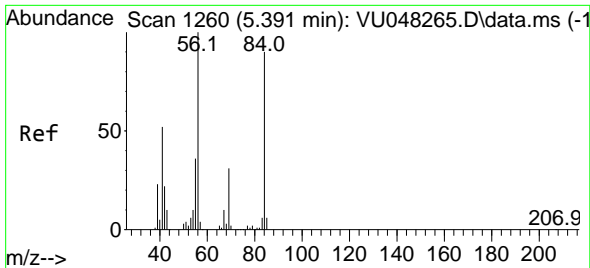
Tgt Ion: 83 Resp: 284497
 Ion Ratio Lower Upper
 83 100
 85 64.3 45.7 84.9



#27
 1,2-Dichloroethane
 Concen: 45.997 ug/L
 RT: 5.793 min Scan# 1385
 Delta R.T. -0.003 min
 Lab File: VU048269.D
 Acq: 25 Apr 2022 15:15

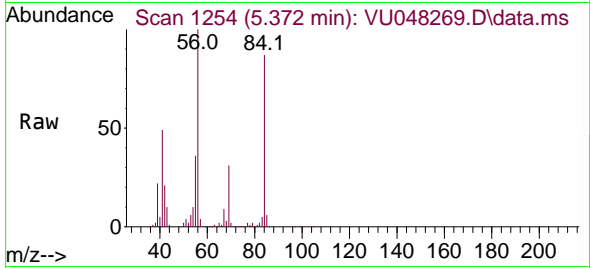
Tgt Ion: 62 Resp: 212583
 Ion Ratio Lower Upper
 62 100
 98 10.3 8.5 12.7



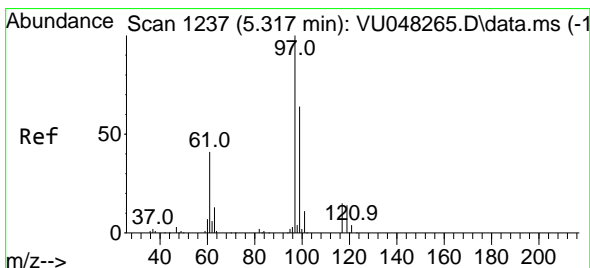
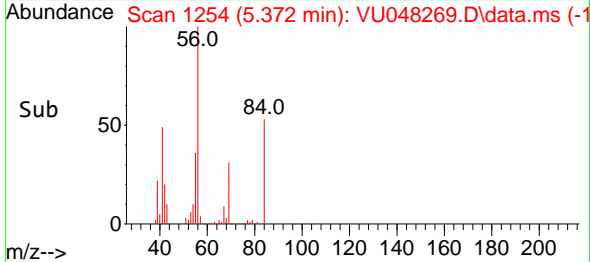
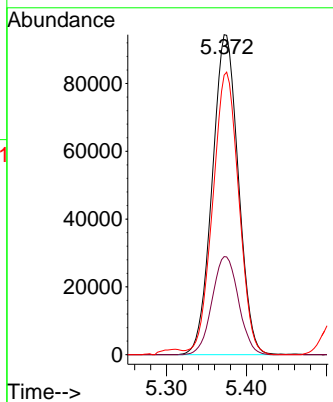


#29
 Cyclohexane
 Concen: 49.082 ug/L
 RT: 5.372 min Scan# 1254
 Delta R.T. -0.019 min
 Lab File: VU048269.D
 Acq: 25 Apr 2022 15:15

Instrument : MSVOA_U
 ClientSampleId : VU048269.D
 ETNQ5MEMSD

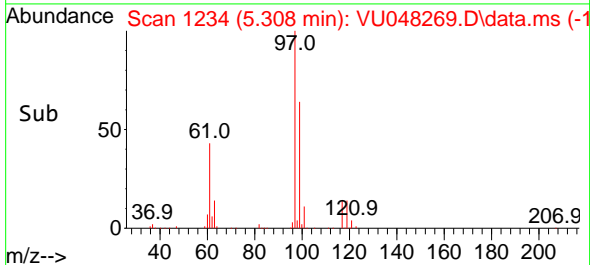
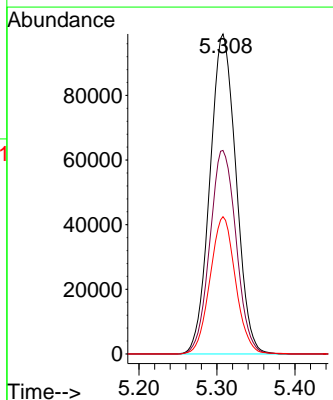
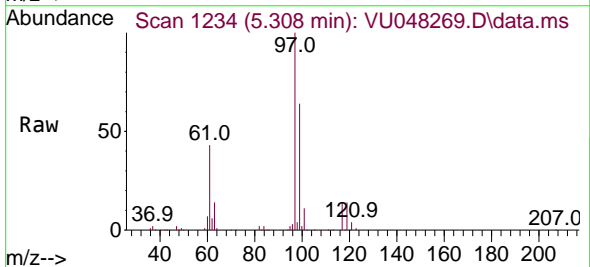


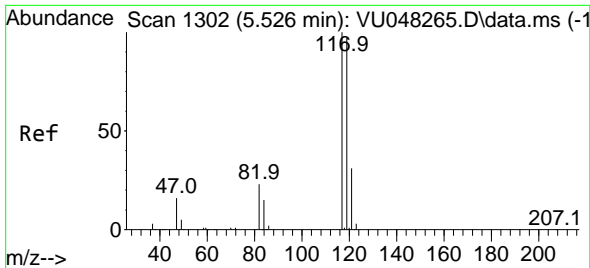
Tgt Ion: 56 Resp: 214127
 Ion Ratio Lower Upper
 56 100
 69 30.9 24.2 36.4
 84 88.0 72.2 108.2



#30
 1,1,1-Trichloroethane
 Concen: 44.137 ug/L
 RT: 5.308 min Scan# 1234
 Delta R.T. -0.010 min
 Lab File: VU048269.D
 Acq: 25 Apr 2022 15:15

Tgt Ion: 97 Resp: 230465
 Ion Ratio Lower Upper
 97 100
 99 64.2 51.8 77.8
 61 41.9 33.9 50.9

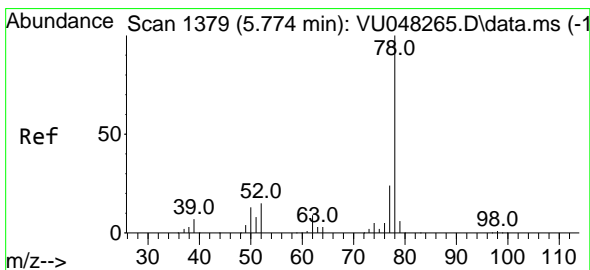
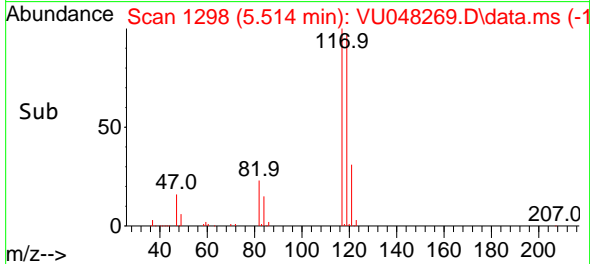
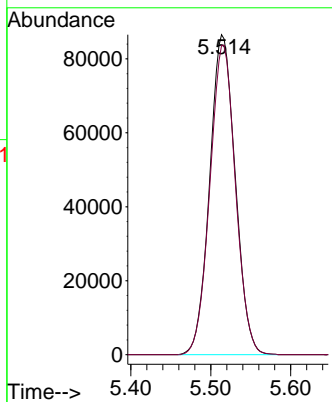
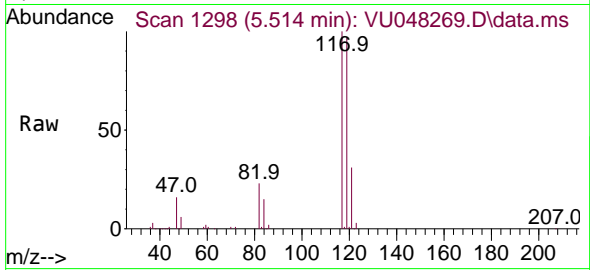




#31
 Carbon tetrachloride
 Concen: 43.161 ug/L
 RT: 5.514 min Scan# 117
 Delta R.T. -0.013 min
 Lab File: VU048269.D
 Acq: 25 Apr 2022 15:15

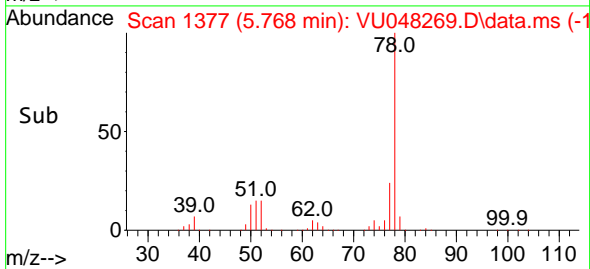
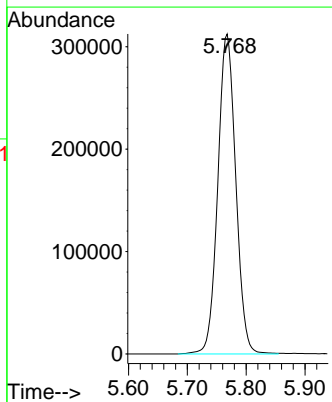
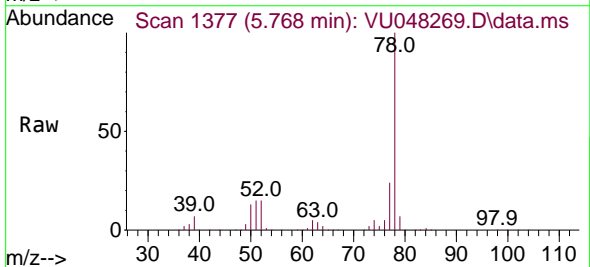
Instrument : MSVOA_U
 ClientSampleId : ETNQ5MEMSD

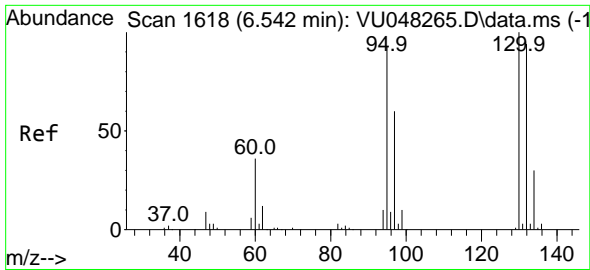
Tgt Ion:117 Resp: 192082
 Ion Ratio Lower Upper
 117 100
 119 96.7 77.1 115.7



#33
 Benzene
 Concen: 48.490 ug/L
 RT: 5.768 min Scan# 1377
 Delta R.T. -0.006 min
 Lab File: VU048269.D
 Acq: 25 Apr 2022 15:15

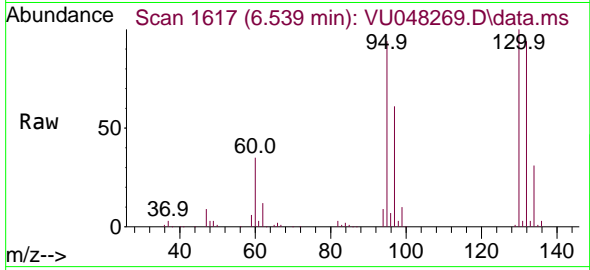
Tgt Ion: 78 Resp: 662908



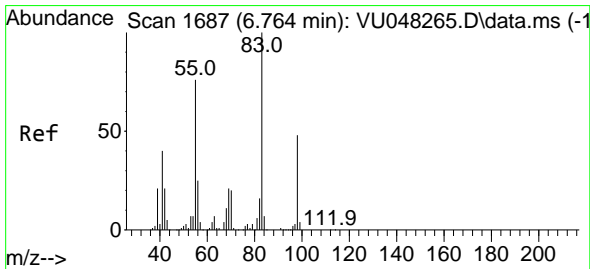
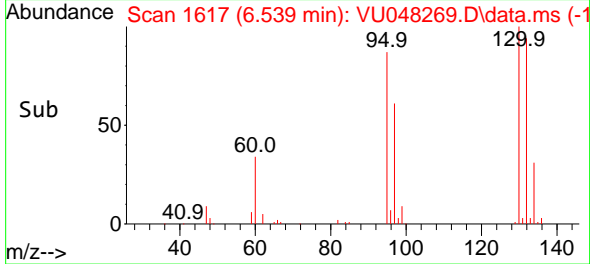
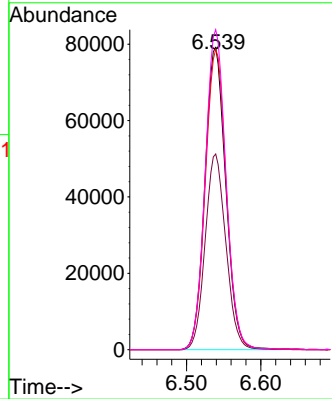


#34
 Trichloroethene
 Concen: 46.192 ug/L
 RT: 6.539 min Scan# 1617
 Delta R.T. -0.003 min
 Lab File: VU048269.D
 Acq: 25 Apr 2022 15:15

Instrument : MSVOA_U
 ClientSampleId : ETNQ5MEMSD

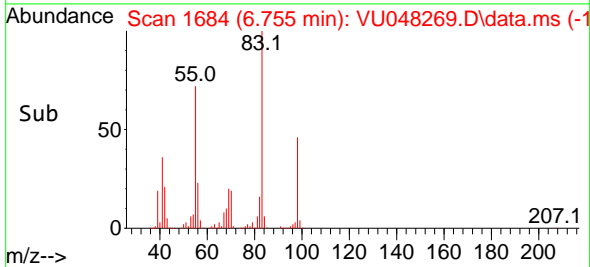
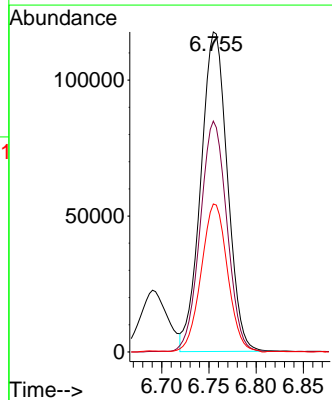
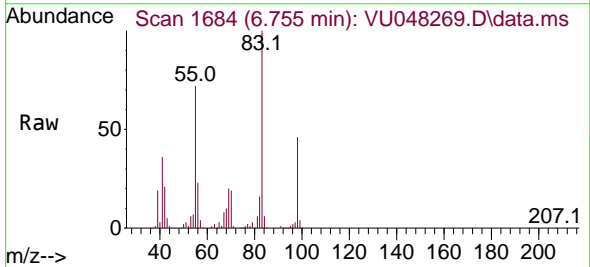


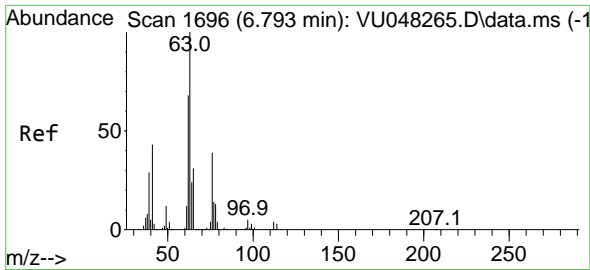
Tgt Ion: 95 Resp: 154785
 Ion Ratio Lower Upper
 95 100
 97 64.8 45.8 85.2
 132 99.4 71.6 133.0
 130 105.9 73.6 136.8



#35
 Methylcyclohexane
 Concen: 48.861 ug/L
 RT: 6.755 min Scan# 1684
 Delta R.T. -0.010 min
 Lab File: VU048269.D
 Acq: 25 Apr 2022 15:15

Tgt Ion: 83 Resp: 229864
 Ion Ratio Lower Upper
 83 100
 55 72.8 59.4 89.2
 98 46.0 37.3 55.9

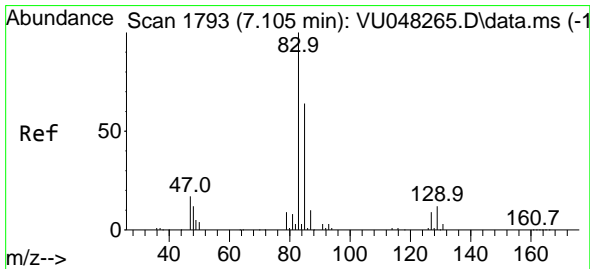
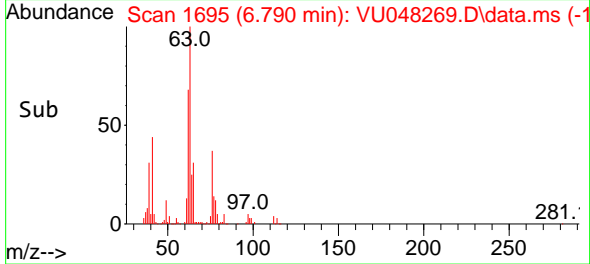
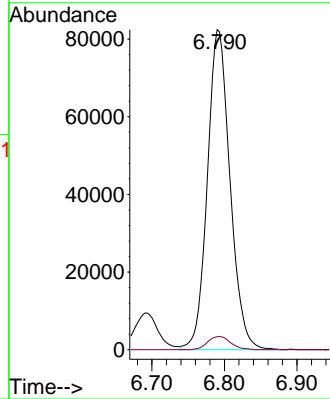
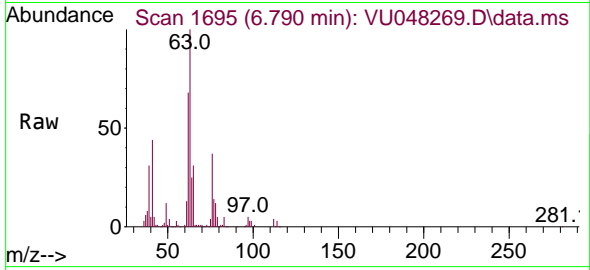




#37
 1,2-Dichloropropane
 Concen: 46.028 ug/L
 RT: 6.790 min Scan# 1696
 Delta R.T. -0.003 min
 Lab File: VU048269.D
 Acq: 25 Apr 2022 15:15

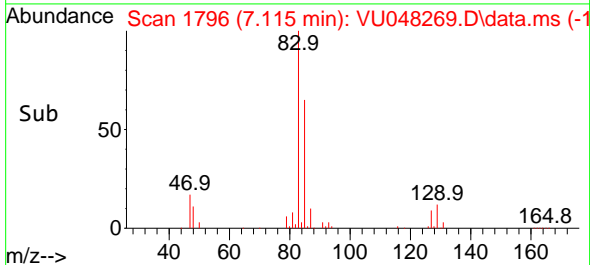
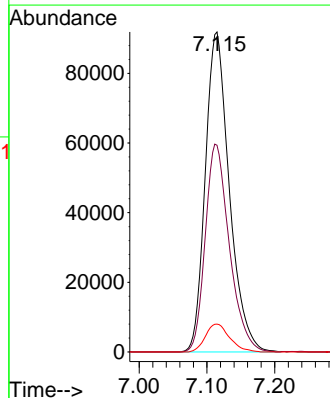
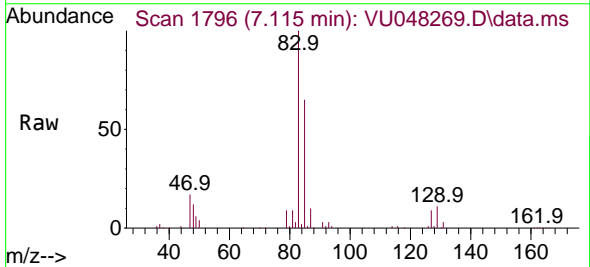
Instrument : MSVOA_U
 ClientSampleId : ETNQ5MEMSD

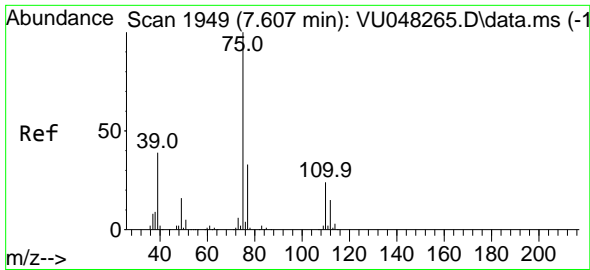
Tgt Ion: 63 Resp: 179029
 Ion Ratio Lower Upper
 63 100
 112 4.2 3.1 4.7



#38
 Bromodichloromethane
 Concen: 46.169 ug/L
 RT: 7.115 min Scan# 1796
 Delta R.T. 0.010 min
 Lab File: VU048269.D
 Acq: 25 Apr 2022 15:15

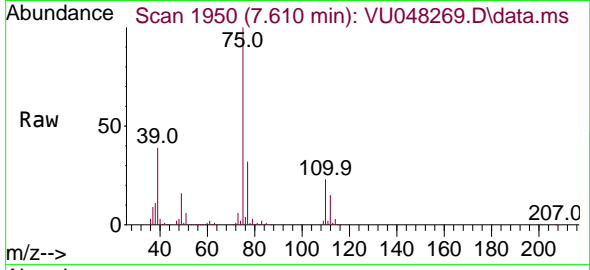
Tgt Ion: 83 Resp: 226783
 Ion Ratio Lower Upper
 83 100
 85 64.6 45.3 84.1
 127 8.7 7.2 10.8



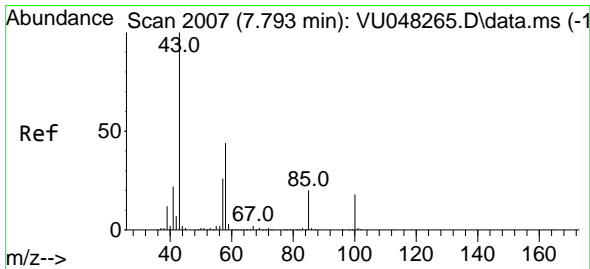
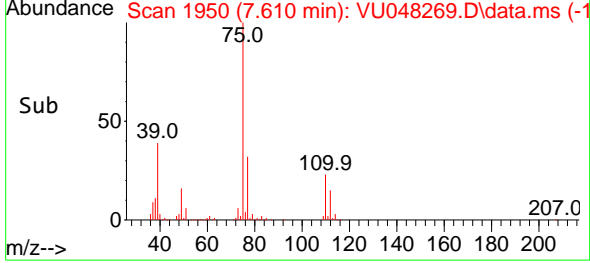
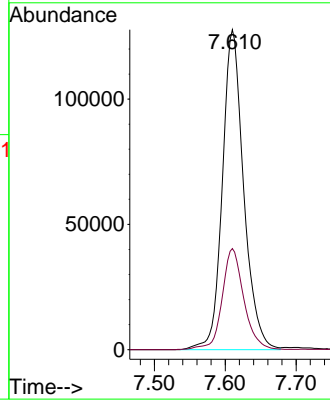


#39
 cis-1,3-Dichloropropene
 Concen: 48.785 ug/L
 RT: 7.610 min Scan# 1949
 Delta R.T. 0.003 min
 Lab File: VU048269.D
 Acq: 25 Apr 2022 15:15

Instrument : MSVOA_U
 ClientSampleId : ETNQ5MEMSD

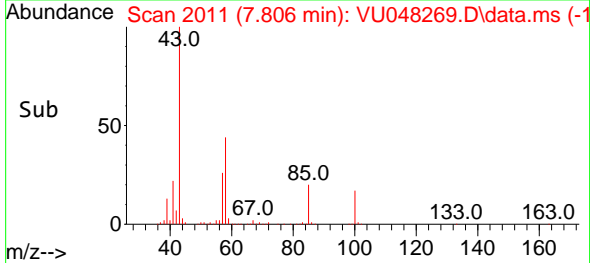
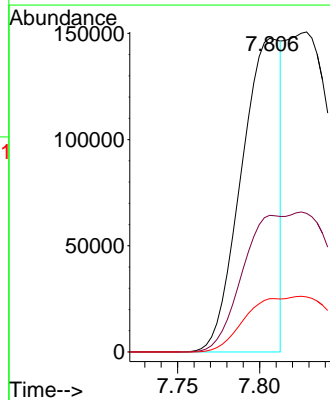
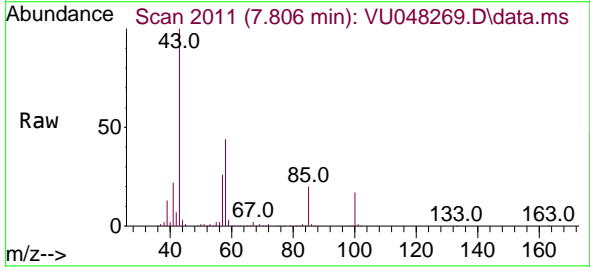


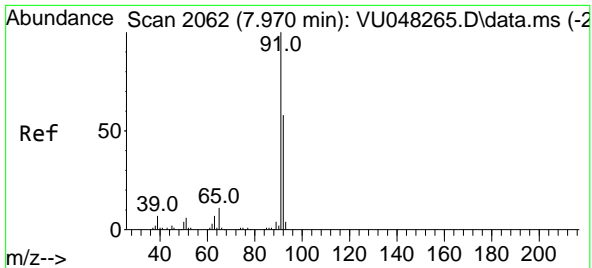
Tgt Ion: 75 Resp: 266825
 Ion Ratio Lower Upper
 75 100
 77 31.6 22.0 41.0



#40
 4-Methyl-2-pentanone
 Concen: 41.752 ug/L
 RT: 7.806 min Scan# 2011
 Delta R.T. 0.013 min
 Lab File: VU048269.D
 Acq: 25 Apr 2022 15:15

Tgt Ion: 43 Resp: 244939
 Ion Ratio Lower Upper
 43 100
 58 43.0 34.4 51.6
 100 16.5 13.6 20.4





#42
 Toluene
 Concen: 50.569 ug/L
 RT: 7.970 min Scan# 2062
 Delta R.T. -0.000 min
 Lab File: VU048269.D
 Acq: 25 Apr 2022 15:15

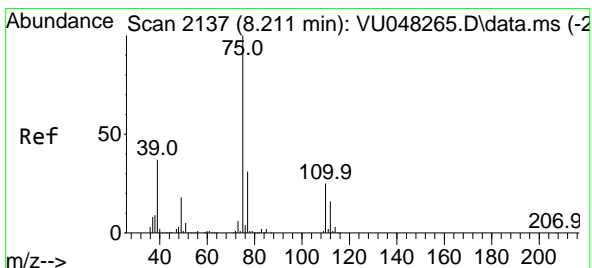
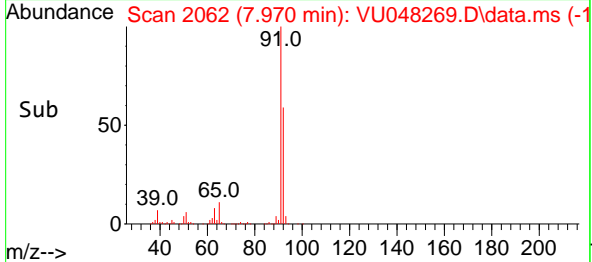
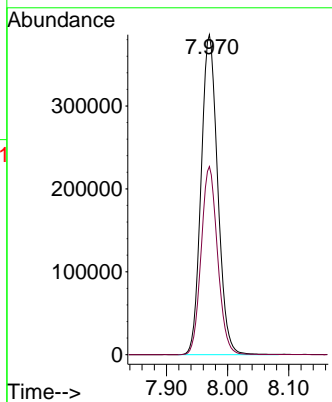
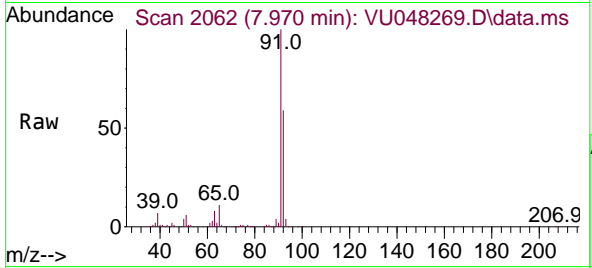
Instrument :

MSVOA_U

ClientSampleId :

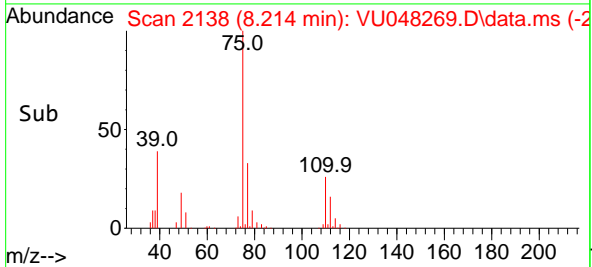
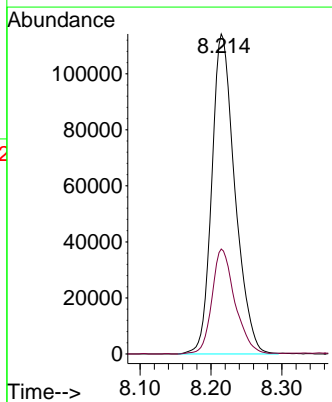
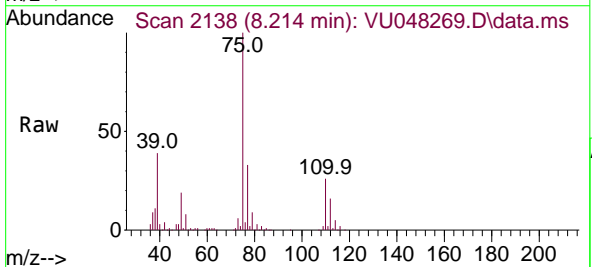
ETNQ5MEMSD

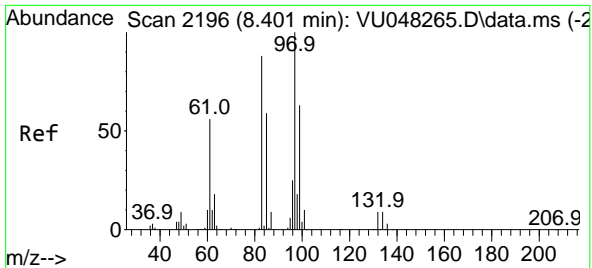
Tgt Ion: 91 Resp: 725816
 Ion Ratio Lower Upper
 91 100
 92 58.8 40.9 76.0



#44
 trans-1,3-Dichloropropene
 Concen: 48.508 ug/L
 RT: 8.214 min Scan# 2138
 Delta R.T. 0.003 min
 Lab File: VU048269.D
 Acq: 25 Apr 2022 15:15

Tgt Ion: 75 Resp: 259185
 Ion Ratio Lower Upper
 75 100
 77 32.8 22.1 41.1





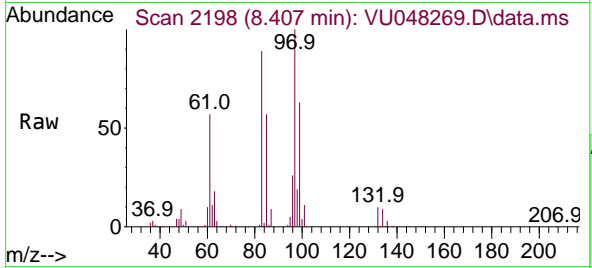
#45
 1,1,2-Trichloroethane
 Concen: 46.560 ug/L
 RT: 8.407 min Scan# 2198
 Delta R.T. 0.006 min
 Lab File: VU048269.D
 Acq: 25 Apr 2022 15:15

Instrument :

MSVOA_U

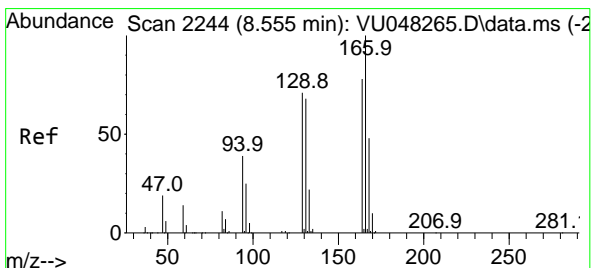
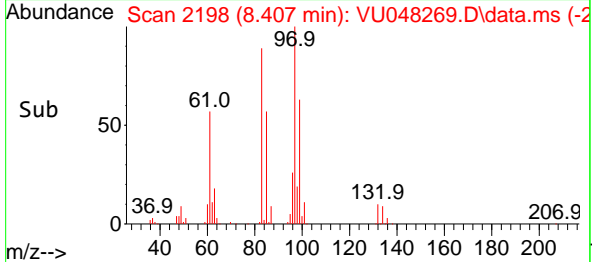
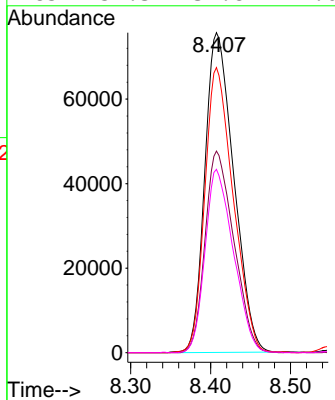
ClientSampleId :

ETNQ5MEMSD



Tgt Ion: 97 Resp: 190003

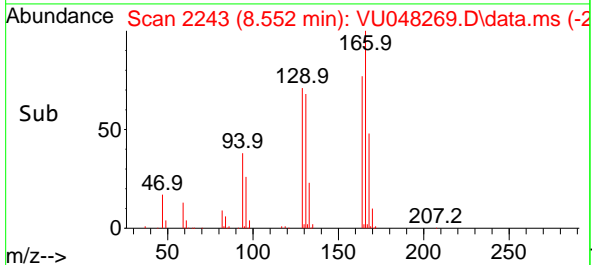
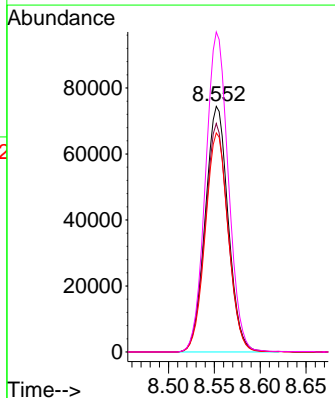
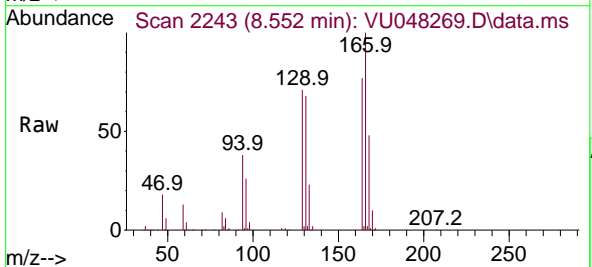
Ion	Ratio	Lower	Upper
97	100		
99	63.0	43.7	81.1
83	89.1	62.6	116.2
85	57.3	39.8	74.0

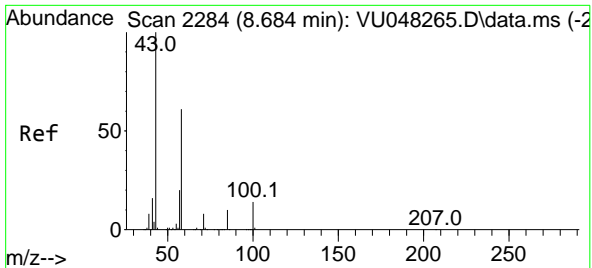


#46
 Tetrachloroethene
 Concen: 45.248 ug/L
 RT: 8.552 min Scan# 2243
 Delta R.T. -0.003 min
 Lab File: VU048269.D
 Acq: 25 Apr 2022 15:15

Tgt Ion: 164 Resp: 130128

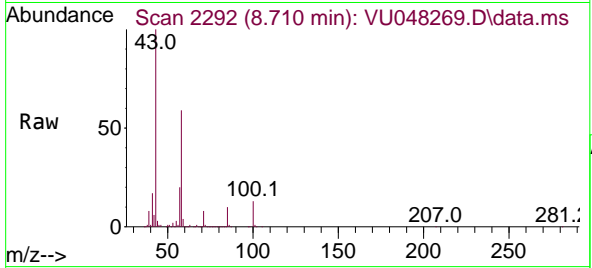
Ion	Ratio	Lower	Upper
164	100		
129	93.0	63.3	117.7
131	89.2	61.2	113.6
166	130.3	88.9	165.1





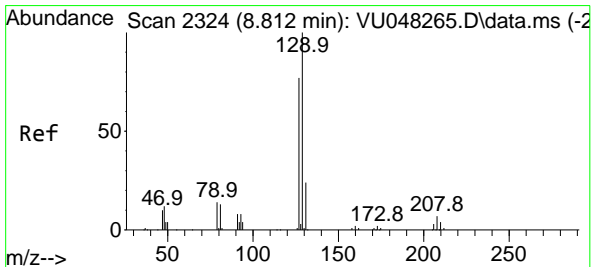
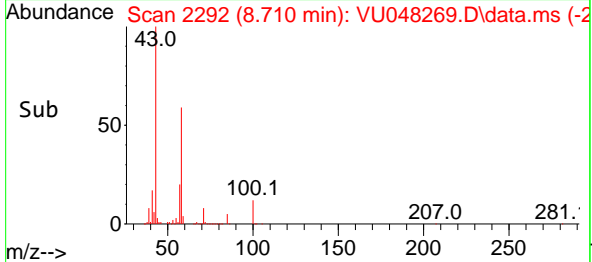
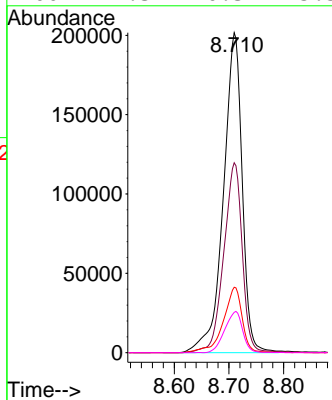
#48
 2-Hexanone
 Concen: 98.156 ug/L
 RT: 8.710 min Scan# 21
 Delta R.T. 0.026 min
 Lab File: VU048269.D
 Acq: 25 Apr 2022 15:15

Instrument :
 MSVOA_U
 ClientSampleId :
 ETNQ5MEMSD



Tgt Ion: 43 Resp: 480862

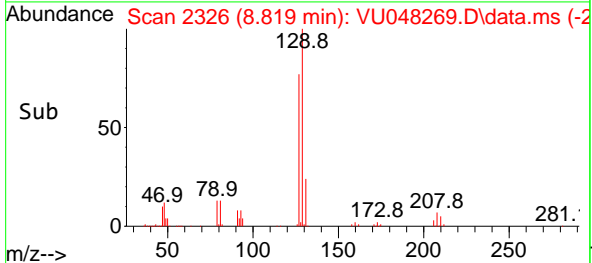
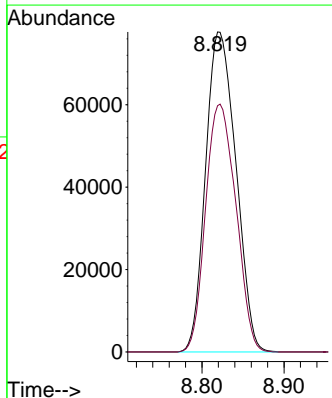
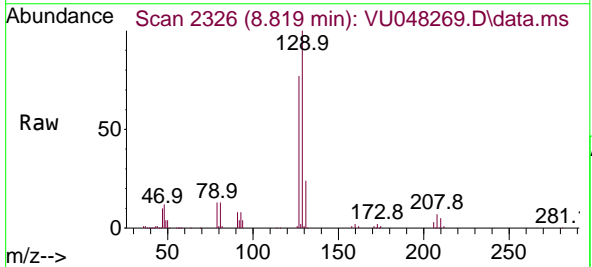
Ion	Ratio	Lower	Upper
43	100		
58	58.5	48.1	72.1
57	20.7	16.2	24.4
100	12.3	10.3	15.5

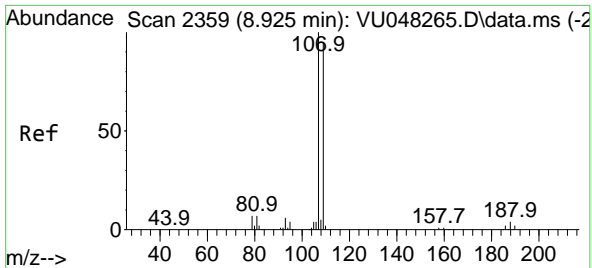


#49
 Dibromochloromethane
 Concen: 44.518 ug/L
 RT: 8.819 min Scan# 2326
 Delta R.T. 0.006 min
 Lab File: VU048269.D
 Acq: 25 Apr 2022 15:15

Tgt Ion: 129 Resp: 199629

Ion	Ratio	Lower	Upper
129	100		
127	76.9	53.8	99.8

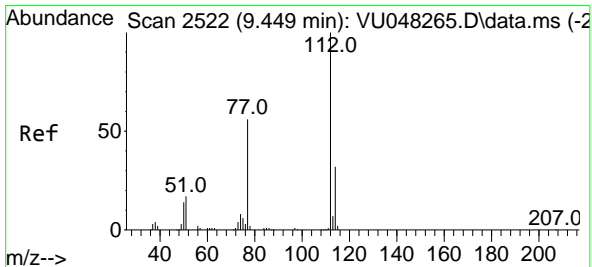
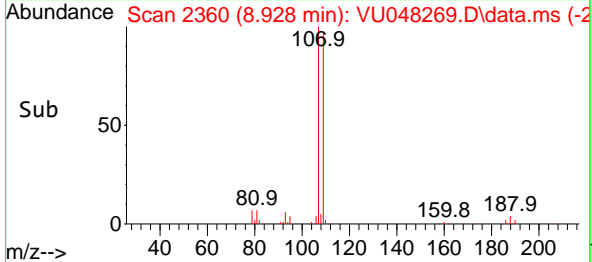
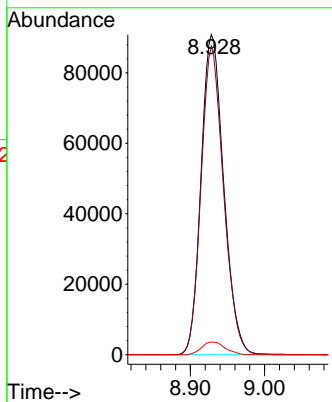
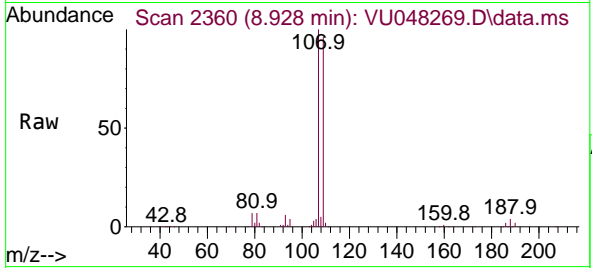




#50
 1,2-Dibromoethane
 Concen: 46.459 ug/L
 RT: 8.928 min Scan# 21
 Delta R.T. 0.003 min
 Lab File: VU048269.D
 Acq: 25 Apr 2022 15:15

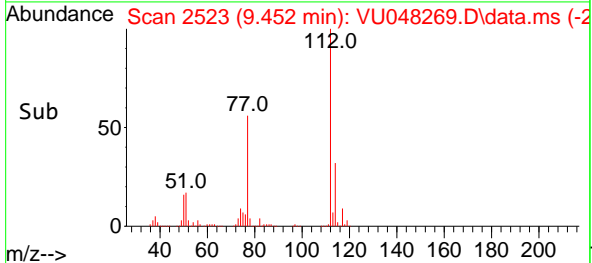
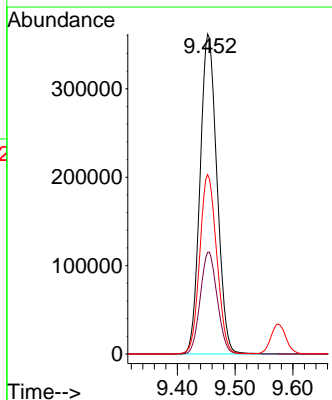
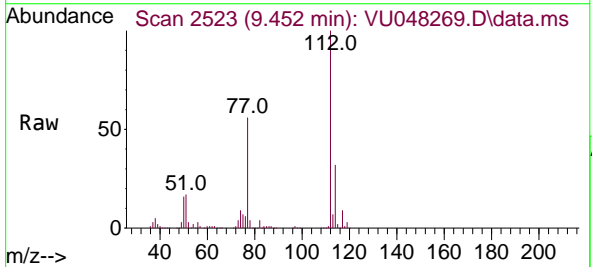
Instrument :
 MSVOA_U
 ClientSampleId :
 ETNQ5MEMSD

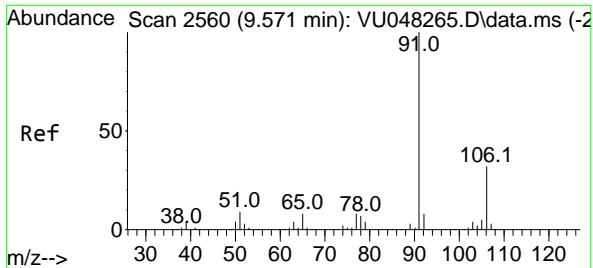
Tgt Ion:107 Resp: 192264
 Ion Ratio Lower Upper
 107 100
 109 96.4 65.0 120.8
 188 3.9 3.1 4.7



#51
 Chlorobenzene
 Concen: 70.978 ug/L
 RT: 9.452 min Scan# 2523
 Delta R.T. 0.003 min
 Lab File: VU048269.D
 Acq: 25 Apr 2022 15:15

Tgt Ion:112 Resp: 734320
 Ion Ratio Lower Upper
 112 100
 114 31.8 22.7 42.1
 77 56.1 44.3 66.5

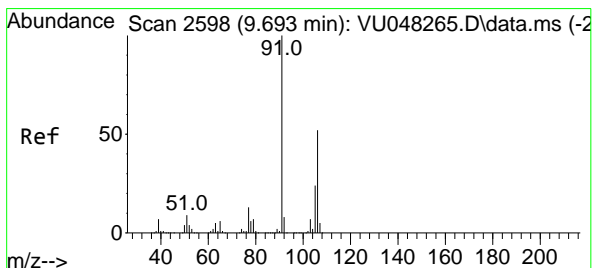
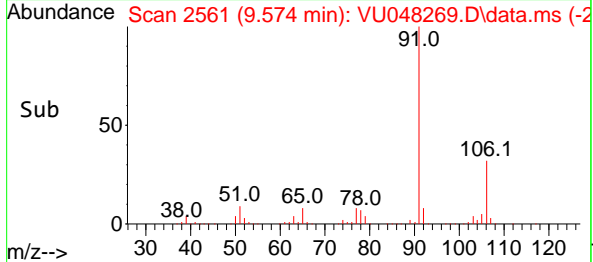
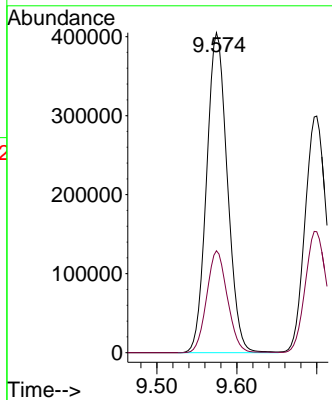
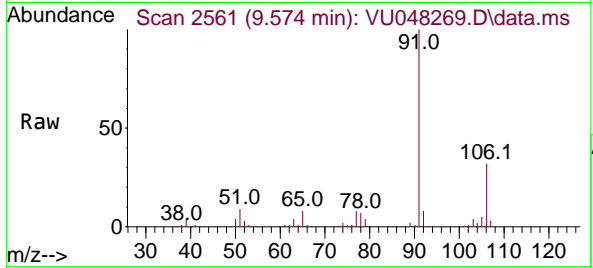




#52
 Ethylbenzene
 Concen: 49.154 ug/L
 RT: 9.574 min Scan# 2561
 Delta R.T. 0.003 min
 Lab File: VU048269.D
 Acq: 25 Apr 2022 15:15

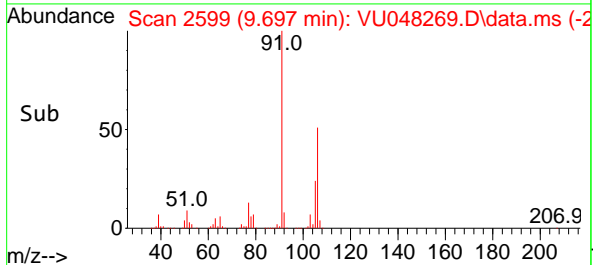
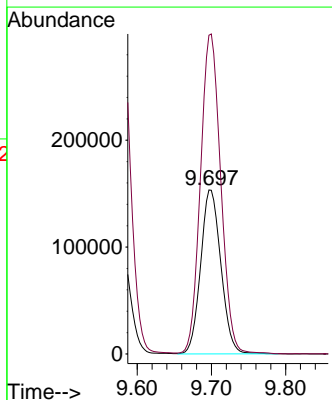
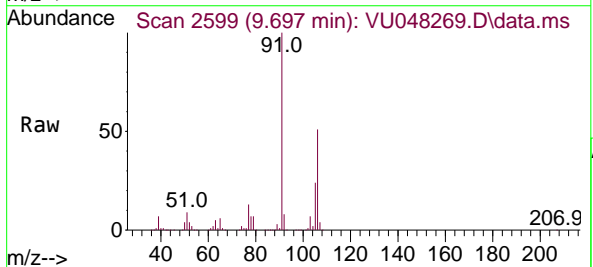
Instrument : MSVOA_U
 ClientSampleId : ETNQ5MEMSD

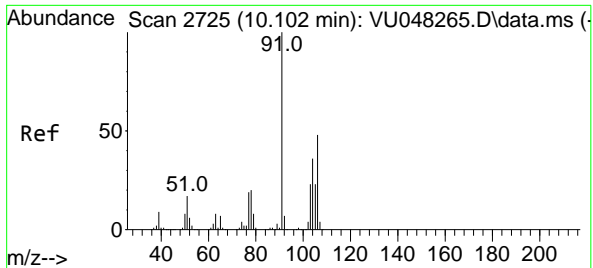
Tgt Ion: 91 Resp: 730648
 Ion Ratio Lower Upper
 91 100
 106 31.8 22.5 41.9



#53
 m,p-Xylene
 Concen: 49.528 ug/L
 RT: 9.697 min Scan# 2599
 Delta R.T. 0.003 min
 Lab File: VU048269.D
 Acq: 25 Apr 2022 15:15

Tgt Ion: 106 Resp: 290524
 Ion Ratio Lower Upper
 106 100
 91 194.4 137.4 255.2

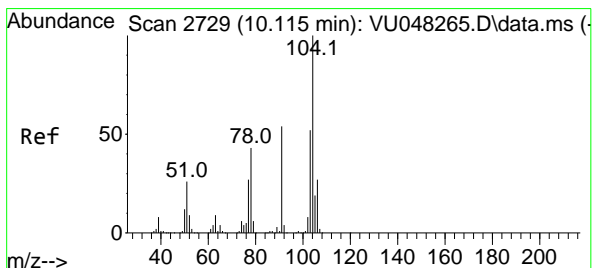
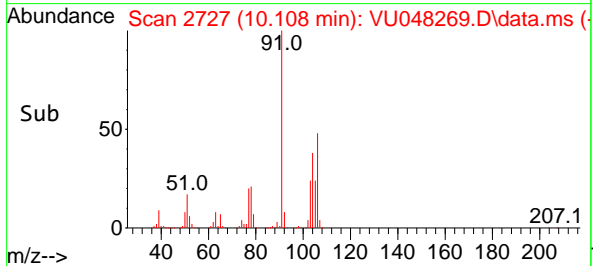
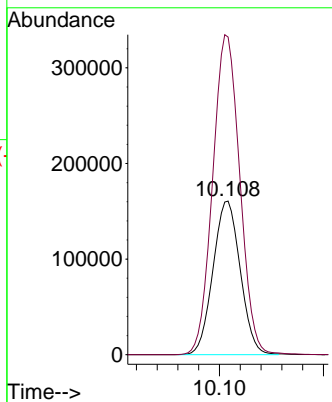
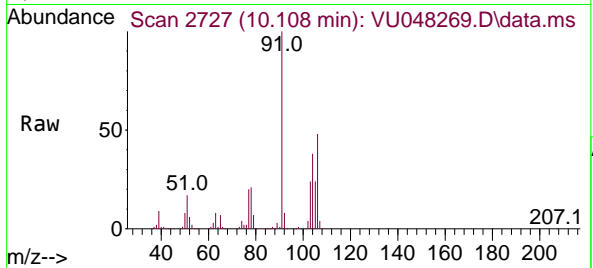




#54
 o-Xylene
 Concen: 49.496 ug/L
 RT: 10.108 min Scan# 21
 Delta R.T. 0.006 min
 Lab File: VU048269.D
 Acq: 25 Apr 2022 15:15

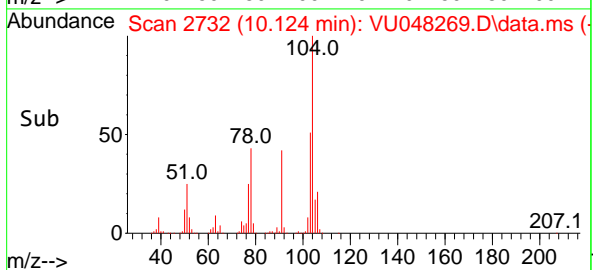
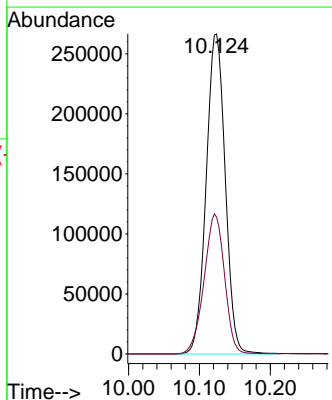
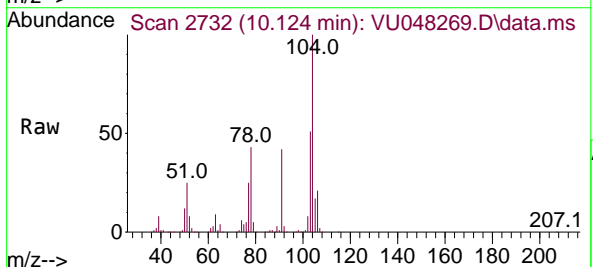
Instrument :
 MSVOA_U
 ClientSampleId :
 ETNQ5MEMSD

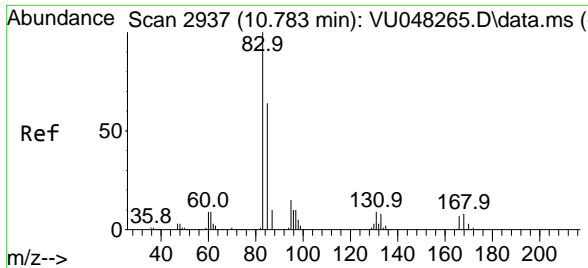
Tgt Ion:106 Resp: 292487
 Ion Ratio Lower Upper
 106 100
 91 206.9 145.3 269.8



#55
 Styrene
 Concen: 49.430 ug/L
 RT: 10.124 min Scan# 2732
 Delta R.T. 0.010 min
 Lab File: VU048269.D
 Acq: 25 Apr 2022 15:15

Tgt Ion:104 Resp: 497604
 Ion Ratio Lower Upper
 104 100
 78 42.8 30.3 56.3

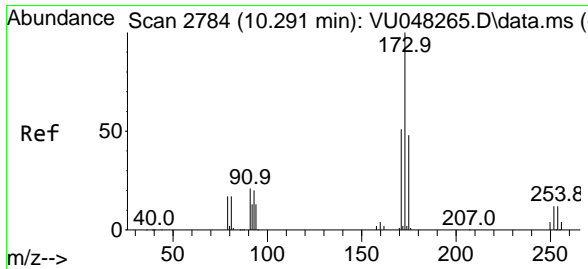
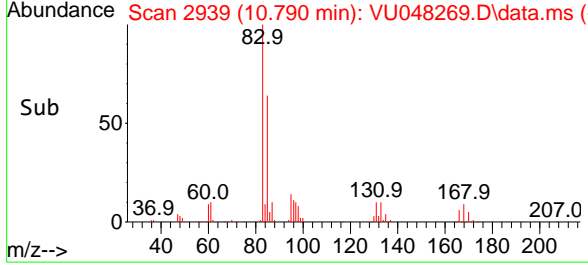
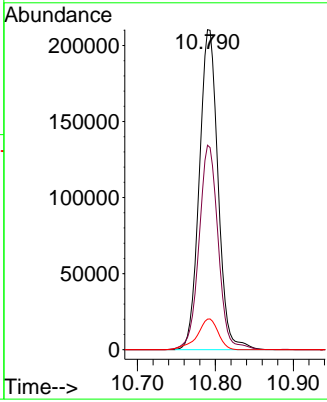
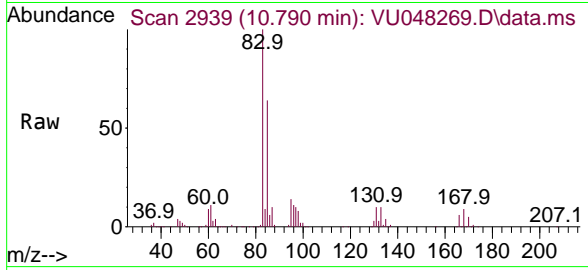




#57
 1,1,2,2-Tetrachloroethane
 Concen: 43.564 ug/L
 RT: 10.790 min Scan# 2939
 Delta R.T. 0.006 min
 Lab File: VU048269.D
 Acq: 25 Apr 2022 15:15

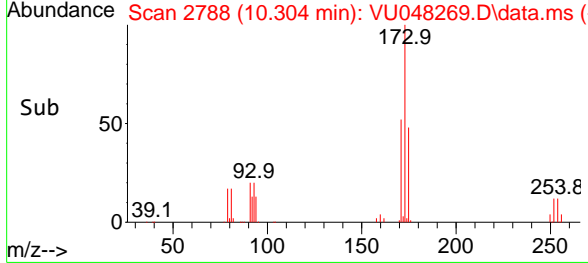
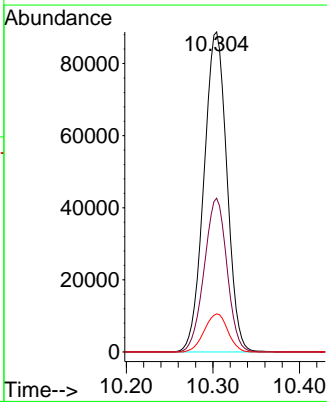
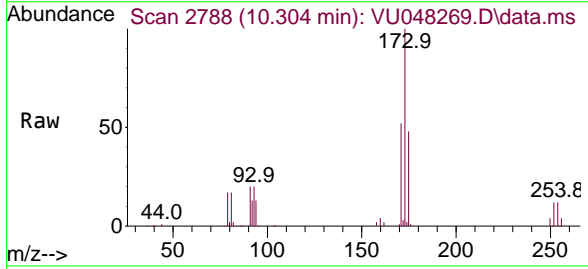
Instrument : MSVOA_U
 ClientSampleId : ETNQ5MEMSD

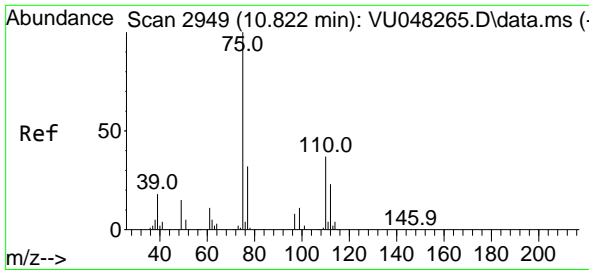
Tgt Ion	Resp	Lower	Upper
83	350866		
83	100		
85	63.9	45.1	83.7
131	9.6	7.8	11.6



#59
 Bromoform
 Concen: 43.414 ug/L
 RT: 10.304 min Scan# 2788
 Delta R.T. 0.013 min
 Lab File: VU048269.D
 Acq: 25 Apr 2022 15:15

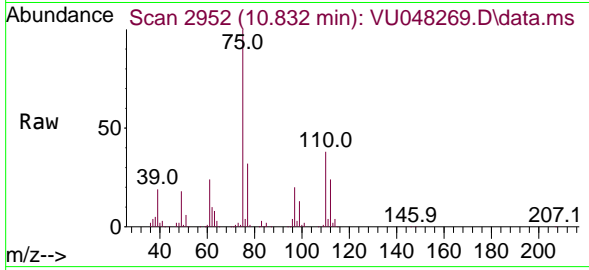
Tgt Ion	Resp	Lower	Upper
173	163588		
173	100		
175	47.6	38.9	58.3
254	12.1	9.5	14.3





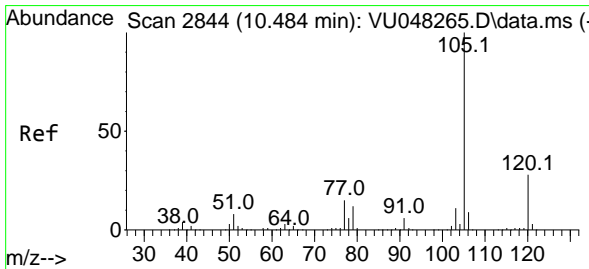
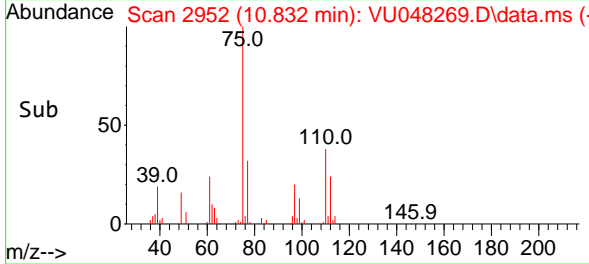
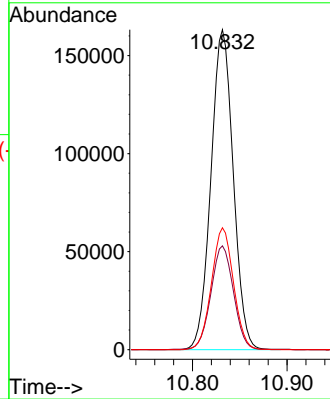
#60
 1,2,3-Trichloropropane
 Concen: 44.173 ug/L
 RT: 10.832 min Scan# 2949
 Delta R.T. 0.010 min
 Lab File: VU048269.D
 Acq: 25 Apr 2022 15:15

Instrument : MSVOA_U
 ClientSampleId : ETNQ5MEMSD



Tgt Ion: 75 Resp: 267557

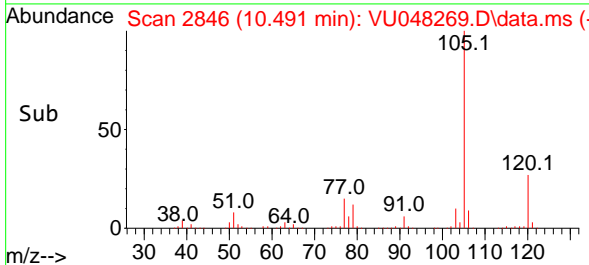
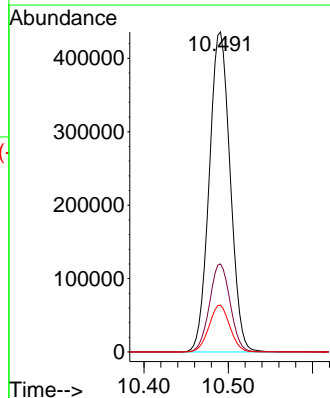
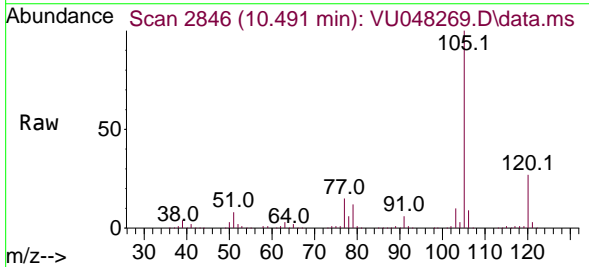
Ion	Ratio	Lower	Upper
75	100		
77	32.9	25.8	38.8
110	37.7	29.9	44.9

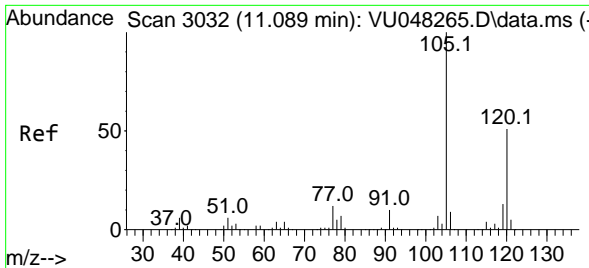


#61
 Isopropylbenzene
 Concen: 51.817 ug/L
 RT: 10.491 min Scan# 2846
 Delta R.T. 0.006 min
 Lab File: VU048269.D
 Acq: 25 Apr 2022 15:15

Tgt Ion: 105 Resp: 752240

Ion	Ratio	Lower	Upper
105	100		
120	27.3	21.7	32.5
77	14.6	11.7	17.5

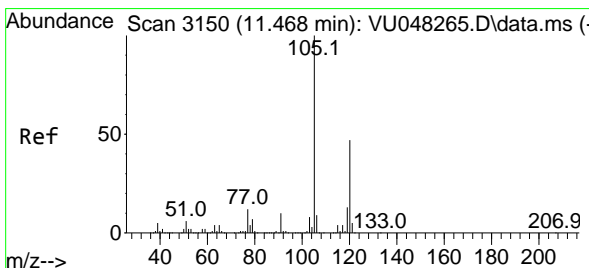
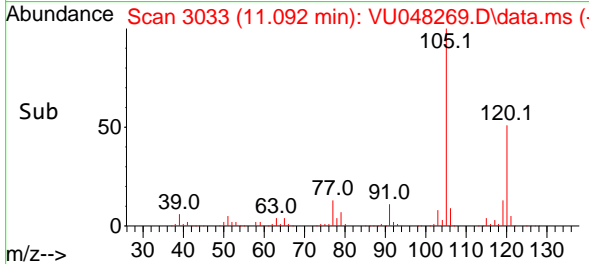
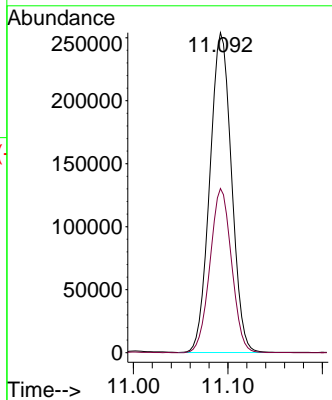
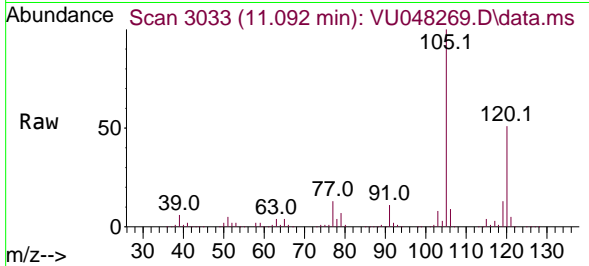




#62
 1,3,5-Trimethylbenzene
 Concen: 52.936 ug/L
 RT: 11.092 min Scan# 3032
 Delta R.T. 0.003 min
 Lab File: VU048269.D
 Acq: 25 Apr 2022 15:15

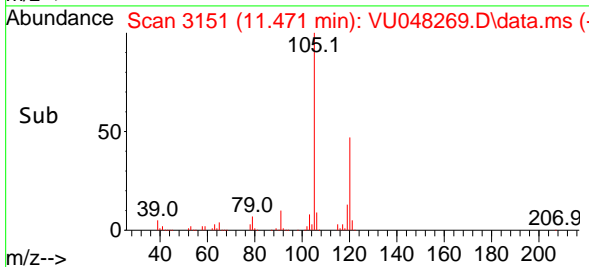
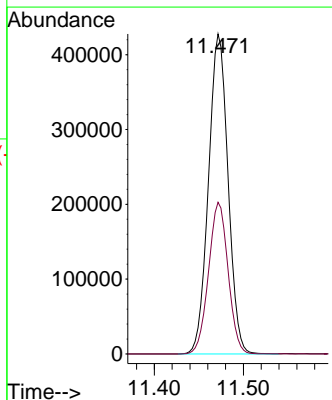
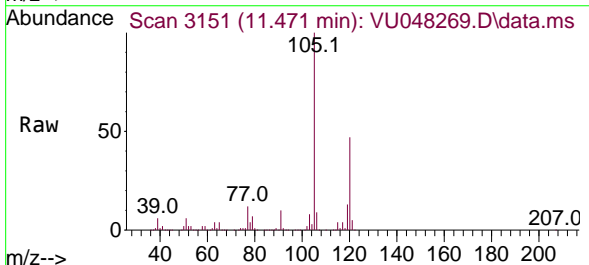
Instrument : MSVOA_U
 ClientSampleId : ETNQ5MEMSD

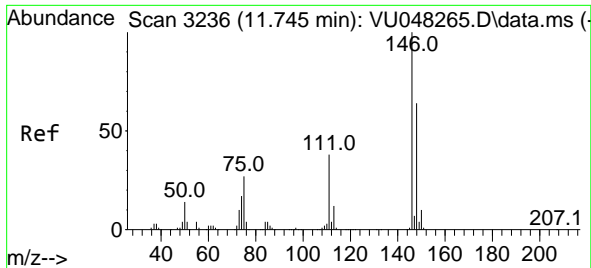
Tgt Ion:105 Resp: 405043
 Ion Ratio Lower Upper
 105 100
 120 50.9 40.7 61.1



#63
 1,2,4-Trimethylbenzene
 Concen: 55.407 ug/L
 RT: 11.471 min Scan# 3151
 Delta R.T. 0.003 min
 Lab File: VU048269.D
 Acq: 25 Apr 2022 15:15

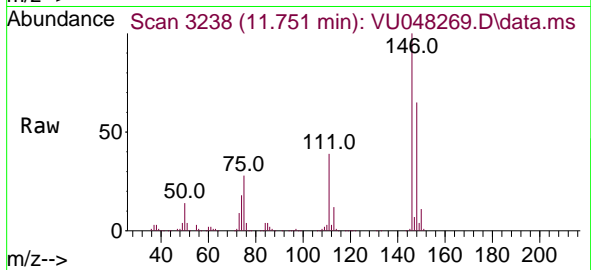
Tgt Ion:105 Resp: 651800
 Ion Ratio Lower Upper
 105 100
 120 47.3 38.0 57.0



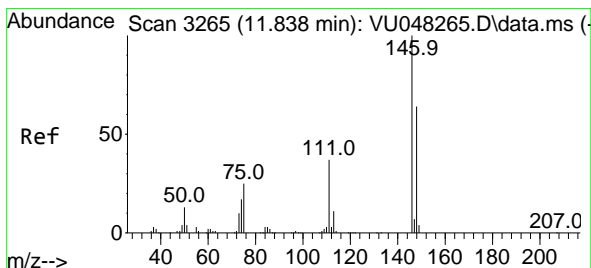
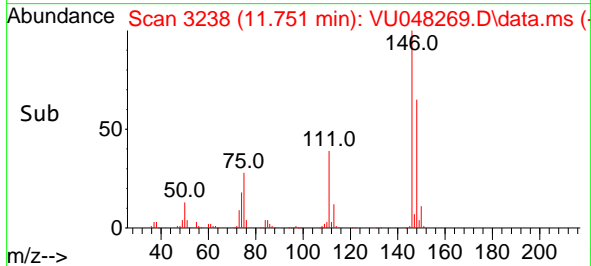
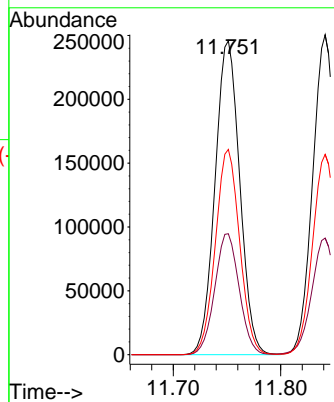


#64
1,3-Dichlorobenzene
Concen: 48.224 ug/L
RT: 11.751 min Scan# 31
Delta R.T. 0.006 min
Lab File: VU048269.D
Acq: 25 Apr 2022 15:15

Instrument :
MSVOA_U
ClientSampleId :
ETNQ5MEMSD

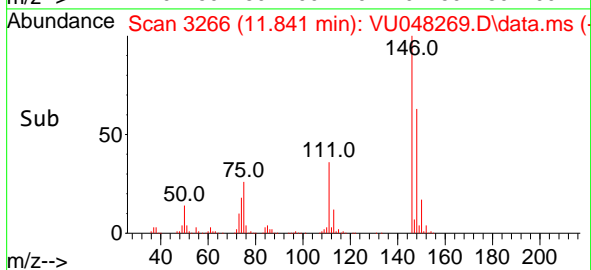
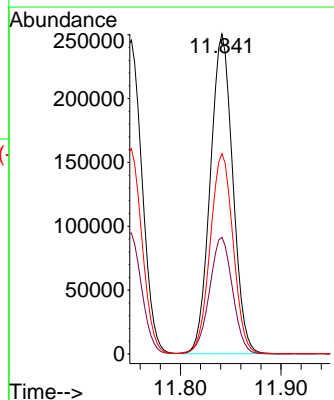
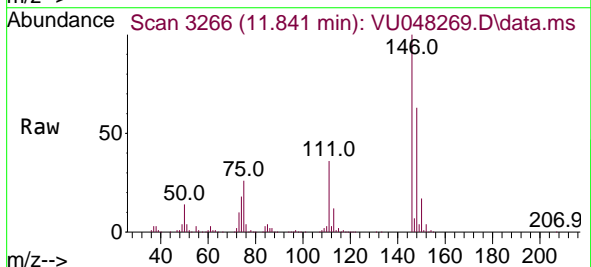


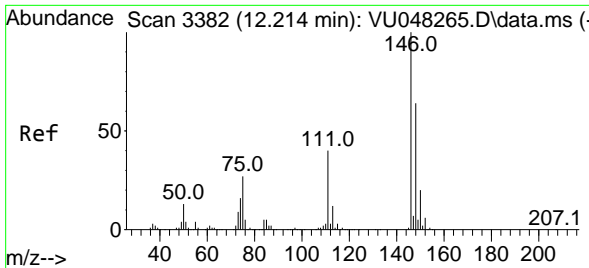
Tgt Ion:146 Resp: 392496
Ion Ratio Lower Upper
146 100
111 38.5 26.7 49.7
148 65.4 44.9 83.5



#65
1,4-Dichlorobenzene
Concen: 46.841 ug/L
RT: 11.841 min Scan# 3266
Delta R.T. 0.003 min
Lab File: VU048269.D
Acq: 25 Apr 2022 15:15

Tgt Ion:146 Resp: 389202
Ion Ratio Lower Upper
146 100
111 36.5 25.9 48.1
148 62.6 45.1 83.7

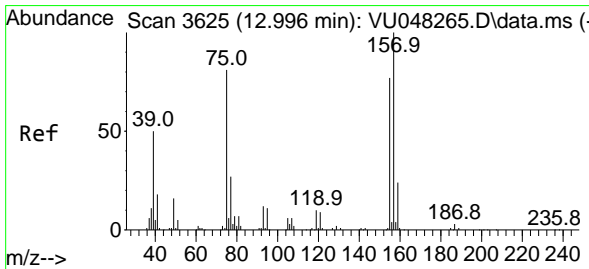
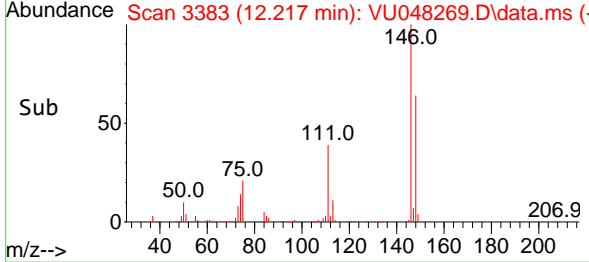
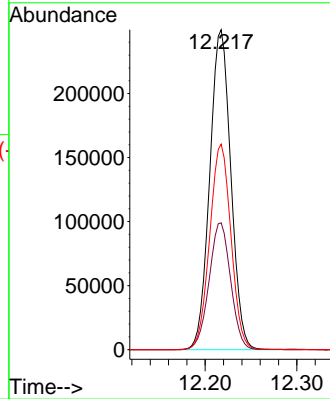
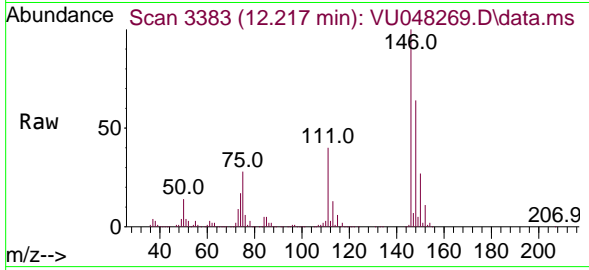




#67
 1,2-Dichlorobenzene
 Concen: 46.595 ug/L
 RT: 12.217 min Scan# 31
 Delta R.T. 0.003 min
 Lab File: VU048269.D
 Acq: 25 Apr 2022 15:15

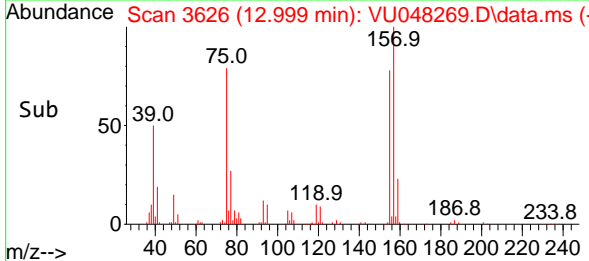
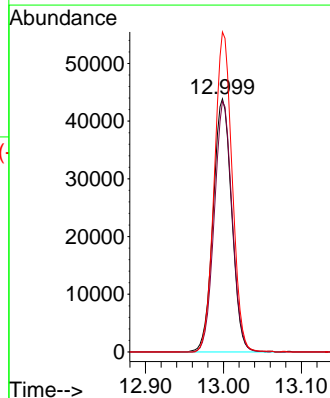
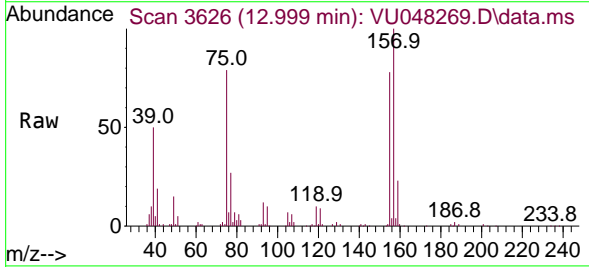
Instrument :
 MSVOA_U
 ClientSampleId :
 ETNQ5MEMSD

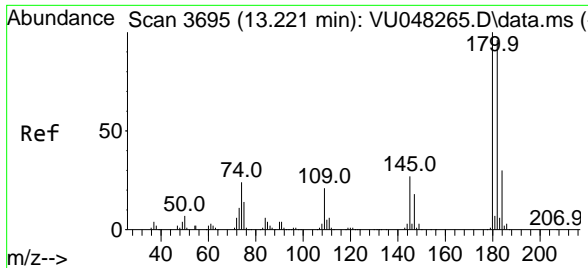
Tgt Ion:146 Resp: 399503
 Ion Ratio Lower Upper
 146 100
 111 39.7 31.7 47.5
 148 64.2 50.9 76.3



#68
 1,2-Dibromo-3-chloropropane
 Concen: 44.882 ug/L
 RT: 12.999 min Scan# 3626
 Delta R.T. 0.003 min
 Lab File: VU048269.D
 Acq: 25 Apr 2022 15:15

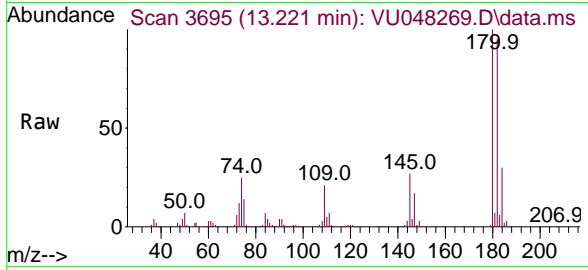
Tgt Ion: 75 Resp: 72572
 Ion Ratio Lower Upper
 75 100
 155 99.0 71.8 107.6
 157 126.4 93.4 140.2





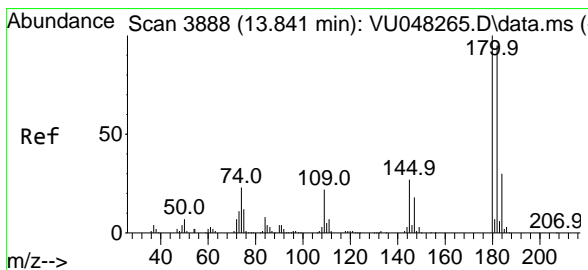
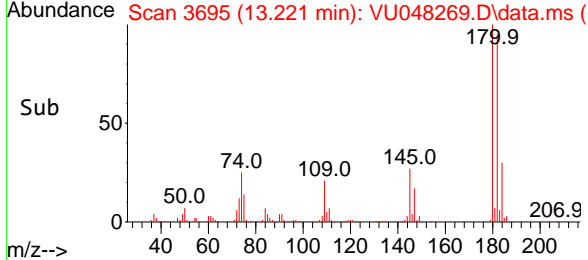
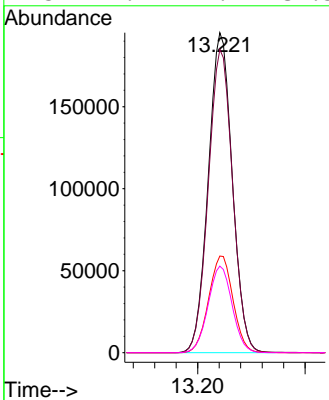
#69
 1,3,5-Trichlorobenzene
 Concen: 49.940 ug/L
 RT: 13.221 min Scan# 3095
 Delta R.T. -0.000 min
 Lab File: VU048269.D
 Acq: 25 Apr 2022 15:15

Instrument : MSVOA_U
 ClientSampleId : VU048269.D
 ETNQ5MEMSD



Tgt Ion:180 Resp: 302028

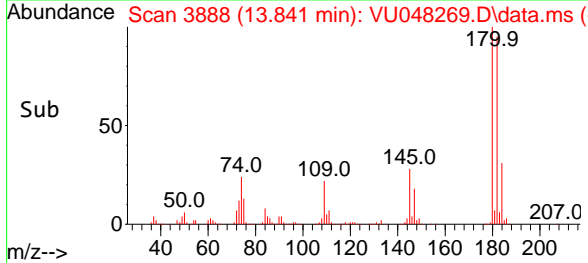
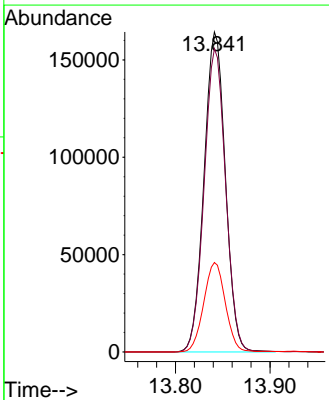
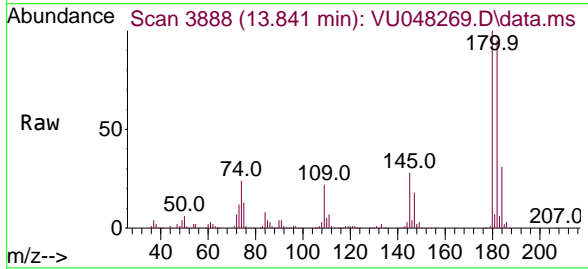
Ion	Ratio	Lower	Upper
180	100		
182	95.9	77.0	115.4
184	30.7	24.6	37.0
145	27.1	21.7	32.5

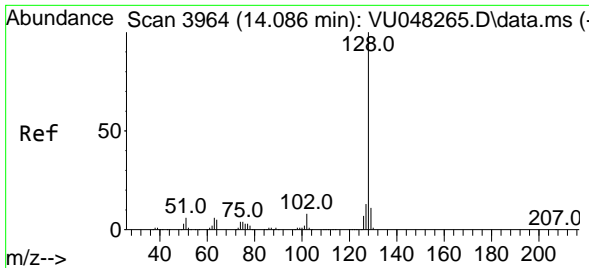


#70
 1,2,4-trichlorobenzene
 Concen: 53.926 ug/L
 RT: 13.841 min Scan# 3888
 Delta R.T. -0.000 min
 Lab File: VU048269.D
 Acq: 25 Apr 2022 15:15

Tgt Ion:180 Resp: 257655

Ion	Ratio	Lower	Upper
180	100		
182	95.6	76.3	114.5
145	28.3	22.6	33.8



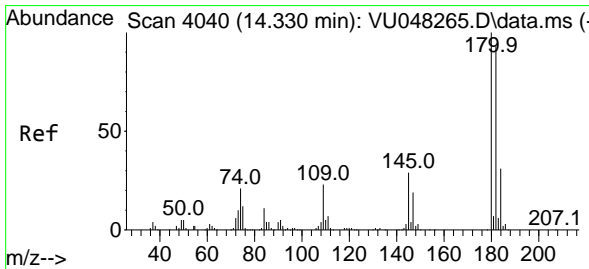
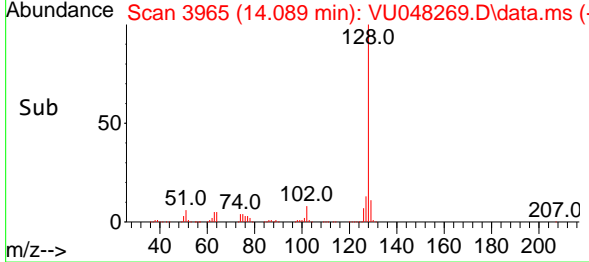
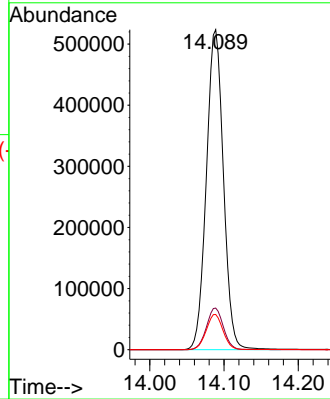
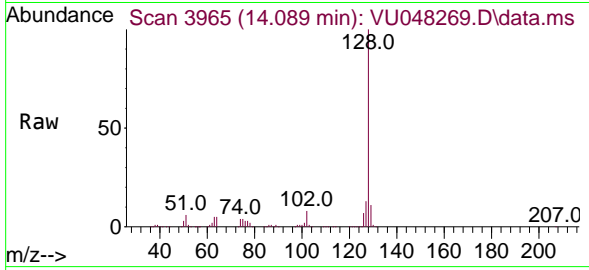


#71
 Naphthalene
 Concen: 61.000 ug/L
 RT: 14.089 min Scan# 3965
 Delta R.T. 0.003 min
 Lab File: VU048269.D
 Acq: 25 Apr 2022 15:15

Instrument : MSVOA_U
 ClientSampleId : ETNQ5MEMSD

Tgt Ion:128 Resp: 834084

Ion	Ratio	Lower	Upper
128	100		
127	12.9	10.4	15.6
129	10.9	8.7	13.1



#72
 1,2,3-Trichlorobenzene
 Concen: 55.190 ug/L
 RT: 14.330 min Scan# 4040
 Delta R.T. -0.000 min
 Lab File: VU048269.D
 Acq: 25 Apr 2022 15:15

Tgt Ion:180 Resp: 270245

Ion	Ratio	Lower	Upper
180	100		
182	96.2	75.8	113.6
145	30.9	23.5	35.3

