

Data Path : Z:\voasrv\HPCHEM1\MSVOA_U\Data\VU042522\
 Data File : VU048285.D
 Acq On : 25 Apr 2022 22:02
 Operator : SY/MD
 Sample : N2518-07
 Misc : 5.0mL/MSVOA_U/WATER
 ALS Vial : 29 Sample Multiplier: 1

Instrument :
 MSVOA_U
 ClientSampleId :
 EXES3

Integration Parameters: LSCINT.P

Integrator: RTE
 Smoothing : OFF
 Sampling : 1
 Start Thrs : 0.2
 Stop Thrs : 0

Filtering: 5
 Min Area: 0 % of largest Peak
 Max Peaks: 100
 Peak Location: TOP

If leading or trailing edge < 100 prefer < Baseline drop else tangent >
 Peak separation: 5

Method : Z:\voasrv\HPCHEM1\MSVOA_U\Method\SFAMULM042522WMA.M
 Title : VOC Analysis

Signal : TIC: VU048285.D\data.ms

peak #	R.T. min	first scan	max scan	last scan	PK TY	peak height	corr. area	corr. % max.	% of total
1	1.359	3	6	26	rVB	24903	28218	1.74%	0.234%
2	1.491	40	47	52	rBV3	13585	16540	1.02%	0.137%
3	1.601	73	81	101	rBV	188882	240076	14.77%	1.995%
4	1.890	163	171	187	rVB	124268	186690	11.49%	1.551%
5	2.562	367	380	395	rBV	311307	515393	31.71%	4.282%
6	2.748	435	438	443	rBV2	258	238	0.01%	0.002%
7	2.777	443	447	449	rBV	769	605	0.04%	0.005%
8	2.938	493	497	498	rBV2	390	266	0.02%	0.002%
9	3.038	516	528	533	rBV4	3224	5601	0.34%	0.047%
10	3.131	550	557	564	rBV4	955	1305	0.08%	0.011%
11	3.173	566	570	571	rBV2	506	382	0.02%	0.003%
12	3.337	616	621	622	rBV	590	496	0.03%	0.004%
13	3.581	694	697	698	rBV2	346	216	0.01%	0.002%
14	3.662	718	722	726	rVB2	205	211	0.01%	0.002%
15	3.690	726	731	732	rBV2	930	720	0.04%	0.006%
16	3.781	753	759	761	rBV2	213	230	0.01%	0.002%
17	3.864	783	785	790	rVB2	258	216	0.01%	0.002%
18	3.906	795	798	801	rBV	278	234	0.01%	0.002%
19	4.018	830	833	841	rVB2	170	244	0.02%	0.002%
20	4.443	960	965	972	rBV2	750	975	0.06%	0.008%
21	4.514	984	987	989	rBV	586	353	0.02%	0.003%
22	4.620	1007	1020	1046	rBV	197692	480064	29.53%	3.989%
23	5.063	1141	1158	1184	rBV	282259	619754	38.13%	5.150%
24	5.285	1220	1227	1232	rBV4	757	1136	0.07%	0.009%
25	5.446	1273	1277	1278	rBV	224	166	0.01%	0.001%
26	5.520	1297	1300	1304	rBV	217	194	0.01%	0.002%
27	5.636	1332	1336	1342	rBV5	803	866	0.05%	0.007%
28	5.723	1342	1363	1402	rBV2	598961	1625502	100.00%	13.507%
29	5.909	1419	1421	1426	rVB3	402	213	0.01%	0.002%
30	5.970	1431	1440	1441	rBV4	2042	2253	0.14%	0.019%
31	6.250	1511	1527	1550	rBV	411842	783216	48.18%	6.508%
32	6.526	1605	1613	1614	rBV4	1898	1716	0.11%	0.014%
33	6.690	1650	1664	1681	rBV	386093	741403	45.61%	6.160%
34	6.935	1737	1740	1743	rBV2	236	188	0.01%	0.002%
35	6.983	1749	1755	1761	rBV2	178	256	0.02%	0.002%
36	7.044	1767	1774	1775	rBV3	741	633	0.04%	0.005%

Data Path : Z:\voasrv\HPCHEM1\MSVOA_U\Data\VU042522\
 Data File : VU048285.D
 Acq On : 25 Apr 2022 22:02
 Operator : SY/MD
 Sample : N2518-07
 Misc : 5.0mL/MSVOA_U/WATER
 ALS Vial : 29 Sample Multiplier: 1

Instrument :
 MSVOA_U
 ClientSampleId :
 EXES3

Integration Parameters: LSCINT.P

Integrator: RTE
 Smoothing : OFF
 Sampling : 1
 Start Thrs: 0.2
 Stop Thrs : 0

Filtering: 5
 Min Area: 0 % of largest Peak
 Max Peaks: 100
 Peak Location: TOP

If leading or trailing edge < 100 prefer < Baseline drop else tangent >
 Peak separation: 5

Method : Z:\voasrv\HPCHEM1\MSVOA_U\Method\SFAMULM042522WMA.M
 Title : VOC Analysis

37	7.102	1791	1792	1798	rVV	232	178	0.01%	0.001%
38	7.179	1803	1816	1830	rBV5	4555	10455	0.64%	0.087%
39	7.317	1854	1859	1863	rVB2	165	180	0.01%	0.001%
40	7.343	1863	1867	1871	rBV2	237	237	0.01%	0.002%
41	7.430	1892	1894	1904	rVB2	469	428	0.03%	0.004%
42	7.565	1923	1936	1954	rBV	183958	320127	19.69%	2.660%
43	7.690	1968	1975	1985	rVB5	2472	3426	0.21%	0.028%
44	7.787	2001	2005	2006	rBV3	383	292	0.02%	0.002%
45	7.899	2022	2040	2054	rBV	681853	1164448	71.64%	9.676%
46	7.970	2058	2062	2075	rVB	16604	25464	1.57%	0.212%
47	8.131	2108	2112	2115	rBV3	296	339	0.02%	0.003%
48	8.179	2115	2127	2146	rBV	126515	211684	13.02%	1.759%
49	8.359	2178	2183	2187	rBV2	425	433	0.03%	0.004%
50	8.391	2189	2193	2200	rVB4	429	561	0.03%	0.005%
51	8.423	2200	2203	2205	rBV	300	184	0.01%	0.002%
52	8.513	2227	2231	2234	rBV	356	280	0.02%	0.002%
53	8.575	2247	2250	2253	rBV2	602	410	0.03%	0.003%
54	8.636	2256	2269	2310	rVV	599601	1111600	68.39%	9.236%
55	8.838	2330	2332	2334	rBV	530	268	0.02%	0.002%
56	8.857	2336	2338	2342	rVB2	576	317	0.02%	0.003%
57	8.986	2376	2378	2382	rVB2	236	187	0.01%	0.002%
58	9.089	2407	2410	2414	rVB2	253	222	0.01%	0.002%
59	9.124	2416	2421	2422	rBV	271	228	0.01%	0.002%
60	9.157	2427	2431	2436	rBV2	392	331	0.02%	0.003%
61	9.218	2443	2450	2454	rBV	286	331	0.02%	0.003%
62	9.417	2499	2512	2535	rBV	580454	966111	59.43%	8.028%
63	9.568	2551	2559	2568	rBV2	2506	3513	0.22%	0.029%
64	9.652	2578	2585	2590	rVV4	422	505	0.03%	0.004%
65	9.690	2590	2597	2608	rVB2	3157	5002	0.31%	0.042%
66	10.005	2691	2695	2699	rBV	336	332	0.02%	0.003%
67	10.025	2699	2701	2705	rVV	317	169	0.01%	0.001%
68	10.099	2719	2724	2728	rBV5	990	1075	0.07%	0.009%
69	10.144	2735	2738	2740	rBV2	339	197	0.01%	0.002%
70	10.221	2759	2762	2769	rVB2	236	217	0.01%	0.002%
71	10.626	2884	2888	2891	rBV2	256	213	0.01%	0.002%
72	10.671	2896	2902	2910	rVB3	2291	3151	0.19%	0.026%
73	10.758	2915	2929	2948	rBV	649955	1035777	63.72%	8.606%
74	10.841	2953	2955	2957	rBV	358	259	0.02%	0.002%
75	10.864	2959	2962	2965	rVV4	630	625	0.04%	0.005%
76	10.896	2967	2972	2982	rVB5	1417	2024	0.12%	0.017%

Data Path : Z:\voasrv\HPCHEM1\MSVOA_U\Data\VU042522\
 Data File : VU048285.D
 Acq On : 25 Apr 2022 22:02
 Operator : SY/MD
 Sample : N2518-07
 Misc : 5.0mL/MSVOA_U/WATER
 ALS Vial : 29 Sample Multiplier: 1

Instrument :
 MSVOA_U
 ClientSampleId :
 EXES3

Integration Parameters: LSCINT.P

Integrator: RTE
 Smoothing : OFF
 Sampling : 1
 Start Thrs : 0.2
 Stop Thrs : 0

Filtering: 5
 Min Area: 0 % of largest Peak
 Max Peaks: 100
 Peak Location: TOP

If leading or trailing edge < 100 prefer < Baseline drop else tangent >
 Peak separation: 5

Method : Z:\voasrv\HPCHEM1\MSVOA_U\Method\SFAMULM042522WMA.M
 Title : VOC Analysis

77	11.002	2999	3005	3014	rVV4	552	940	0.06%	0.008%
78	11.089	3029	3032	3035	rBV3	588	465	0.03%	0.004%
79	11.359	3112	3116	3120	rBV2	363	287	0.02%	0.002%
80	11.410	3129	3132	3136	rVB2	388	286	0.02%	0.002%
81	11.459	3141	3147	3149	rBV3	1594	1676	0.10%	0.014%
82	11.562	3173	3179	3182	rBV2	454	406	0.02%	0.003%
83	11.578	3182	3184	3190	rVV3	324	331	0.02%	0.003%
84	11.697	3217	3221	3230	rVB4	971	1022	0.06%	0.008%
85	11.745	3233	3236	3242	rVB4	490	434	0.03%	0.004%
86	11.812	3243	3257	3279	rBV	533931	847360	52.13%	7.041%
87	11.970	3302	3306	3314	rVB6	2094	2598	0.16%	0.022%
88	12.021	3319	3322	3326	rVB2	341	197	0.01%	0.002%
89	12.073	3327	3338	3358	rBV9	2304	5766	0.35%	0.048%
90	12.147	3358	3361	3362	rBV	463	254	0.02%	0.002%
91	12.195	3362	3376	3393	rBV	647966	1040100	63.99%	8.642%
92	12.336	3417	3420	3422	rBV2	404	260	0.02%	0.002%
93	12.372	3428	3431	3433	rBV3	335	168	0.01%	0.001%
94	12.414	3442	3444	3447	rVB2	423	204	0.01%	0.002%
95	12.562	3487	3490	3493	rBV	340	251	0.02%	0.002%
96	12.623	3506	3509	3513	rVB	357	214	0.01%	0.002%
97	12.771	3550	3555	3565	rVB3	1481	2106	0.13%	0.017%
98	13.147	3668	3672	3678	rBV4	394	398	0.02%	0.003%
99	13.266	3706	3709	3711	rBV3	356	274	0.02%	0.002%
100	13.844	3886	3889	3890	rBV	568	355	0.02%	0.003%

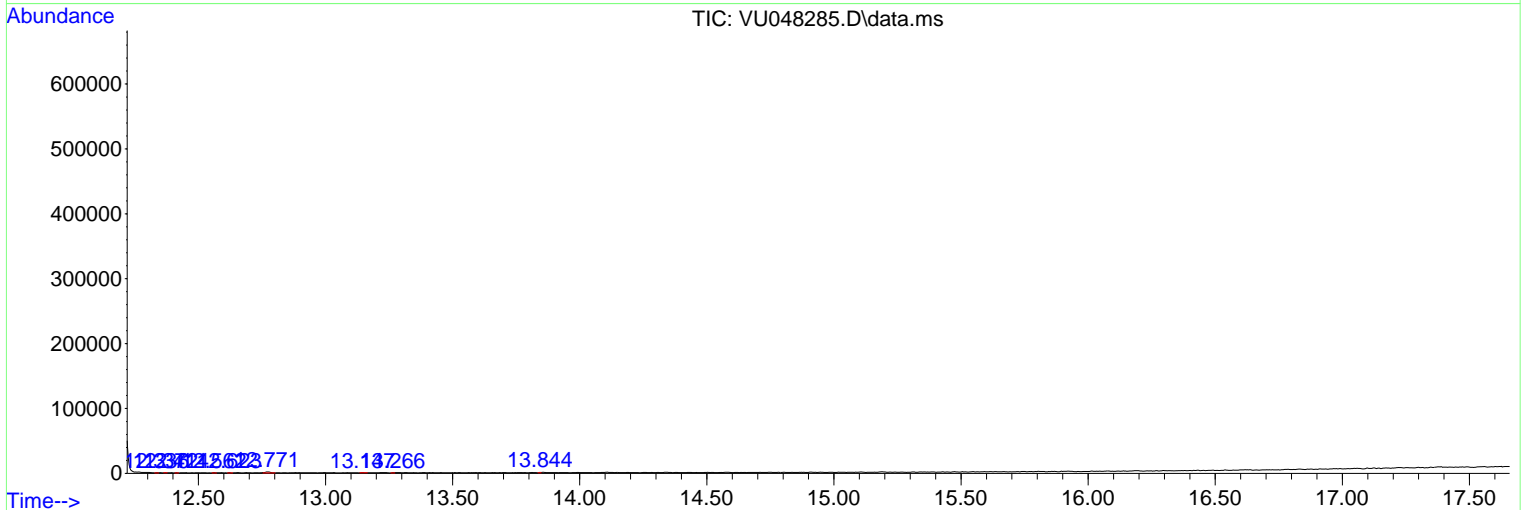
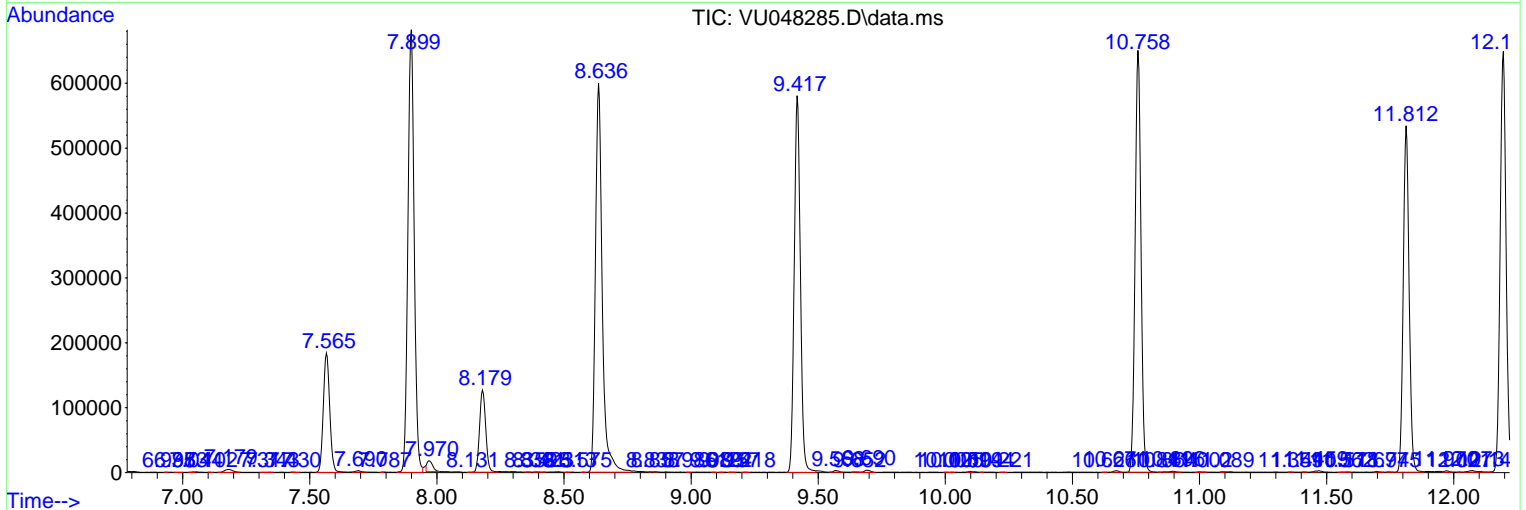
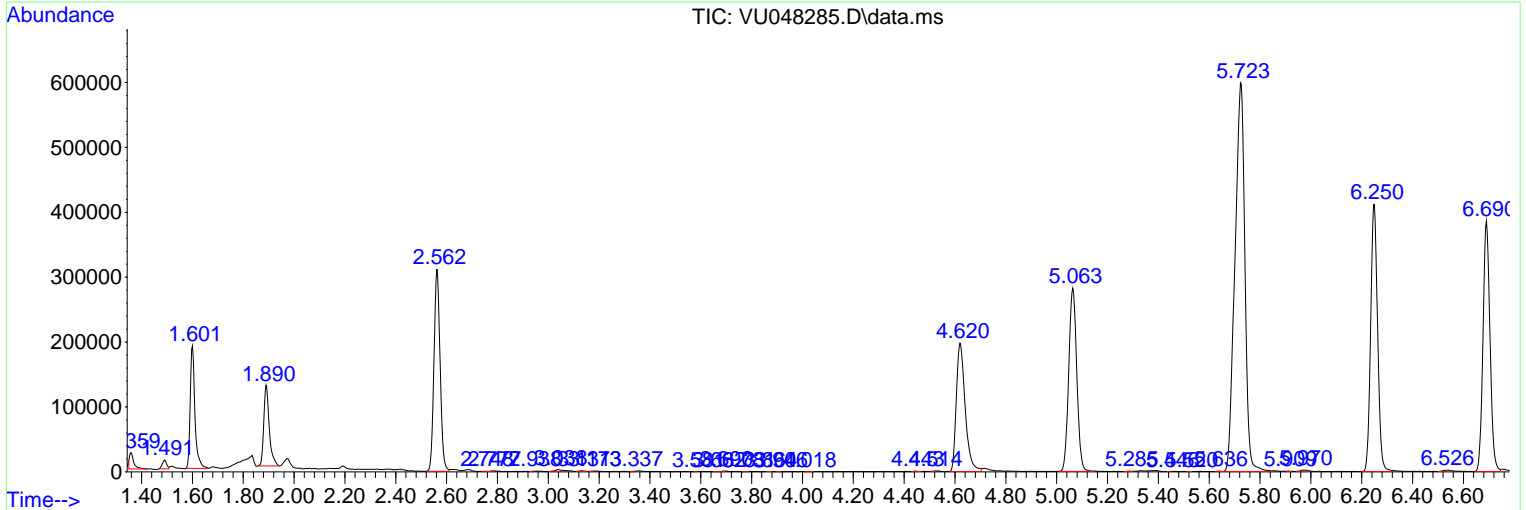
Sum of corrected areas: 12034901

Data Path : Z:\voasrv\HPCHEM1\MSVOA_U\Data\VU042522\
 Data File : VU048285.D
 Acq On : 25 Apr 2022 22:02
 Operator : SY/MD
 Sample : N2518-07
 Misc : 5.0mL/MSVOA_U/WATER
 ALS Vial : 29 Sample Multiplier: 1

Instrument :
 MSVOA_U
ClientSampleId :
 EXES3

Quant Method : Z:\voasrv\HPCHEM1\MSVOA_U\Method\SFAMULM042522WMA.M
 Quant Title : VOC Analysis

TIC Library : C:\Database\NIST20.L
 TIC Integration Parameters: LSCINT.P



Library Search Compound Report

Data Path : Z:\voasrv\HPCHEM1\MSVOA_U\Data\VU042522\
Data File : VU048285.D
Acq On : 25 Apr 2022 22:02
Operator : SY/MD
Sample : N2518-07
Misc : 5.0mL/MSVOA_U/WATER
ALS Vial : 29 Sample Multiplier: 1

Instrument :
MSVOA_U
ClientSampleId :
EXES3

Quant Method : Z:\voasrv\HPCHEM1\MSVOA_U\Method\SFAMULM042522WMA.M
Quant Title : VOC Analysis

TIC Library : C:\Database\NIST20.L
TIC Integration Parameters: LSCINT.P

No Library Search Compounds Detected

Data Path : Z:\voasrv\HPCHEM1\MSVOA_U\Data\VU042522\
Data File : VU048285.D
Acq On : 25 Apr 2022 22:02
Operator : SY/MD
Sample : N2518-07
Misc : 5.0mL/MSVOA_U/WATER
ALS Vial : 29 Sample Multiplier: 1

Instrument :
MSVOA_U
ClientSampleId :
EXES3

Quant Method : Z:\voasrv\HPCHEM1\MSVOA_U\Method\SFAMULM042522WMA.M
Quant Title : VOC Analysis

TIC Library : C:\Database\NIST20.L
TIC Integration Parameters: LSCINT.P

TIC Top Hit name	RT	EstConc	Units	Response	--Internal Standard--		
					#	RT	Resp Conc
