

Data Path : Z:\voasrv\HPCHEM1\MSVOA_U\Data\VU042522\
 Data File : VU048288.D
 Acq On : 25 Apr 2022 23:14
 Operator : SY/MD
 Sample : N2518-10
 Misc : 5.0mL/MSVOA_U/WATER
 ALS Vial : 32 Sample Multiplier: 1

Instrument :
 MSVOA_U
 ClientSampleId :
 EXES6

Integration Parameters: LSCINT.P

Integrator: RTE
 Smoothing : OFF
 Sampling : 1
 Start Thrs : 0.2
 Stop Thrs : 0

Filtering: 5
 Min Area: 0 % of largest Peak
 Max Peaks: 100
 Peak Location: TOP

If leading or trailing edge < 100 prefer < Baseline drop else tangent >
 Peak separation: 5

Method : Z:\voasrv\HPCHEM1\MSVOA_U\Method\SFAMULM042522WMA.M
 Title : VOC Analysis

Signal : TIC: VU048288.D\data.ms

peak #	R.T. min	first scan	max scan	last scan	PK TY	peak height	corr. area	corr. % max.	% of total
1	1.491	39	47	53	rBV2	30257	35302	2.07%	0.275%
2	1.601	73	81	97	rBV	193299	238745	13.97%	1.863%
3	1.896	165	173	185	rBV	139253	197095	11.53%	1.538%
4	2.565	368	381	393	rBV	344434	571594	33.44%	4.459%
5	2.626	394	400	416	rVV	18216	32829	1.92%	0.256%
6	2.684	416	418	422	rVB3	698	430	0.03%	0.003%
7	2.758	439	441	444	rBV2	415	255	0.01%	0.002%
8	2.838	463	466	471	rVB2	359	338	0.02%	0.003%
9	2.893	476	483	492	rBV4	1381	2598	0.15%	0.020%
10	3.038	525	528	531	rBV3	591	571	0.03%	0.004%
11	3.083	539	542	546	rBV2	296	241	0.01%	0.002%
12	3.186	562	574	591	rBV3	3763	9268	0.54%	0.072%
13	3.295	606	608	613	rVB	349	221	0.01%	0.002%
14	3.327	613	618	625	rBV3	374	373	0.02%	0.003%
15	3.510	671	675	680	rVB2	329	337	0.02%	0.003%
16	3.588	689	699	708	rVV4	1338	2532	0.15%	0.020%
17	3.639	712	715	719	rVB3	362	292	0.02%	0.002%
18	3.977	817	820	826	rVB2	280	218	0.01%	0.002%
19	4.028	832	836	843	rBV2	176	240	0.01%	0.002%
20	4.134	864	869	873	rVV2	219	225	0.01%	0.002%
21	4.282	901	915	917	rBV	184	373	0.02%	0.003%
22	4.446	956	966	972	rVV4	590	1218	0.07%	0.010%
23	4.546	986	997	1005	rBV3	2752	5802	0.34%	0.045%
24	4.620	1007	1020	1042	rBV	200332	474980	27.79%	3.706%
25	5.063	1140	1158	1180	rBV	305976	666964	39.02%	5.203%
26	5.218	1203	1206	1210	rVB3	450	263	0.02%	0.002%
27	5.263	1215	1220	1223	rBV2	462	359	0.02%	0.003%
28	5.295	1223	1230	1235	rBV3	683	1097	0.06%	0.009%
29	5.337	1235	1243	1250	rVV3	909	1225	0.07%	0.010%
30	5.549	1306	1309	1314	rVB2	298	222	0.01%	0.002%
31	5.726	1341	1364	1395	rBV2	632767	1709141	100.00%	13.334%
32	5.967	1435	1439	1444	rBV3	654	681	0.04%	0.005%
33	6.034	1456	1460	1462	rBV3	324	221	0.01%	0.002%
34	6.115	1479	1485	1488	rBV	412	404	0.02%	0.003%
35	6.153	1495	1497	1501	rBV3	331	233	0.01%	0.002%
36	6.250	1511	1527	1552	rBV	428421	812039	47.51%	6.335%

Data Path : Z:\voasrv\HPCHEM1\MSVOA_U\Data\VU042522\
 Data File : VU048288.D
 Acq On : 25 Apr 2022 23:14
 Operator : SY/MD
 Sample : N2518-10
 Misc : 5.0mL/MSVOA_U/WATER
 ALS Vial : 32 Sample Multiplier: 1

Instrument :
 MSVOA_U
 ClientSampleId :
 EXES6

Integration Parameters: LSCINT.P

Integrator: RTE
 Smoothing : OFF
 Sampling : 1
 Start Thrs : 0.2
 Stop Thrs : 0

Filtering: 5
 Min Area: 0 % of largest Peak
 Max Peaks: 100
 Peak Location: TOP

If leading or trailing edge < 100 prefer < Baseline drop else tangent >
 Peak separation: 5

Method : Z:\voasrv\HPCHEM1\MSVOA_U\Method\SFAMULM042522WMA.M
 Title : VOC Analysis

37	6.362	1559	1562	1565	rVB2	374	231	0.01%	0.002%
38	6.449	1583	1589	1593	rBV2	366	356	0.02%	0.003%
39	6.526	1608	1613	1619	rBV5	1281	1730	0.10%	0.013%
40	6.597	1632	1635	1639	rVB2	395	308	0.02%	0.002%
41	6.690	1650	1664	1694	rBV	399042	776602	45.44%	6.059%
42	6.809	1694	1701	1708	rBV5	1258	1968	0.12%	0.015%
43	6.980	1751	1754	1760	rVB	273	233	0.01%	0.002%
44	7.025	1761	1768	1769	rBV3	362	361	0.02%	0.003%
45	7.105	1789	1793	1796	rBV2	396	410	0.02%	0.003%
46	7.182	1804	1817	1831	rVB4	4100	8543	0.50%	0.067%
47	7.279	1842	1847	1850	rBV2	306	279	0.02%	0.002%
48	7.430	1888	1894	1896	rBV	283	238	0.01%	0.002%
49	7.501	1914	1916	1923	rVB3	313	263	0.02%	0.002%
50	7.565	1923	1936	1956	rBV	197103	346193	20.26%	2.701%
51	7.690	1966	1975	1987	rVB5	2153	4641	0.27%	0.036%
52	7.748	1987	1993	1995	rBV3	295	305	0.02%	0.002%
53	7.899	2026	2040	2055	rBV	770276	1329561	77.79%	10.373%
54	8.179	2115	2127	2143	rBV	141921	238358	13.95%	1.860%
55	8.404	2195	2197	2200	rVB3	400	220	0.01%	0.002%
56	8.475	2207	2219	2229	rVB	2882	4474	0.26%	0.035%
57	8.581	2246	2252	2255	rBV4	766	915	0.05%	0.007%
58	8.636	2255	2269	2300	rBV	615876	1131045	66.18%	8.824%
59	8.902	2349	2352	2354	rBV3	344	236	0.01%	0.002%
60	8.948	2361	2366	2367	rBV2	559	494	0.03%	0.004%
61	8.960	2368	2370	2374	rVB3	493	350	0.02%	0.003%
62	9.160	2429	2432	2433	rBV2	436	227	0.01%	0.002%
63	9.417	2499	2512	2532	rBV	614645	1016222	59.46%	7.928%
64	9.562	2551	2557	2558	rBV2	291	247	0.01%	0.002%
65	9.571	2558	2560	2566	rVV2	448	416	0.02%	0.003%
66	9.645	2578	2583	2586	rBV	440	356	0.02%	0.003%
67	9.697	2591	2599	2607	rVB4	1371	2028	0.12%	0.016%
68	9.835	2637	2642	2644	rBV2	342	299	0.02%	0.002%
69	9.912	2663	2666	2667	rBV	367	212	0.01%	0.002%
70	9.935	2671	2673	2678	rVB2	298	224	0.01%	0.002%
71	9.970	2678	2684	2687	rBV2	397	424	0.02%	0.003%
72	10.092	2717	2722	2725	rBV2	277	258	0.02%	0.002%
73	10.198	2753	2755	2762	rBV2	210	228	0.01%	0.002%
74	10.279	2776	2780	2783	rBV2	304	283	0.02%	0.002%
75	10.600	2877	2880	2884	rBV	279	220	0.01%	0.002%
76	10.671	2895	2902	2913	rVB5	2611	3779	0.22%	0.029%

Data Path : Z:\voasrv\HPCHEM1\MSVOA_U\Data\VU042522\
 Data File : VU048288.D
 Acq On : 25 Apr 2022 23:14
 Operator : SY/MD
 Sample : N2518-10
 Misc : 5.0mL/MSVOA_U/WATER
 ALS Vial : 32 Sample Multiplier: 1

Instrument :
 MSVOA_U
 ClientSampleId :
 EXES6

Integration Parameters: LSCINT.P

Integrator: RTE
 Smoothing : OFF
 Sampling : 1
 Start Thrs : 0.2
 Stop Thrs : 0

Filtering: 5
 Min Area: 0 % of largest Peak
 Max Peaks: 100
 Peak Location: TOP

If leading or trailing edge < 100 prefer < Baseline drop else tangent >
 Peak separation: 5

Method : Z:\voasrv\HPCHEM1\MSVOA_U\Method\SFAMULM042522WMA.M
 Title : VOC Analysis

77	10.758	2916	2929	2950	rBV	635105	1034157	60.51%	8.068%
78	10.893	2963	2971	2982	rVB2	5059	8539	0.50%	0.067%
79	11.070	3021	3026	3027	rBV2	259	212	0.01%	0.002%
80	11.092	3030	3033	3034	rBV	421	210	0.01%	0.002%
81	11.111	3037	3039	3043	rVB2	530	361	0.02%	0.003%
82	11.414	3126	3133	3137	rBV4	624	654	0.04%	0.005%
83	11.436	3137	3140	3141	rBV	363	210	0.01%	0.002%
84	11.465	3146	3149	3150	rBV	793	496	0.03%	0.004%
85	11.697	3215	3221	3228	rBV5	1251	1464	0.09%	0.011%
86	11.748	3232	3237	3243	rVV4	1112	1208	0.07%	0.009%
87	11.812	3245	3257	3283	rBV	592085	944687	55.27%	7.370%
88	11.906	3283	3286	3288	rBV2	477	345	0.02%	0.003%
89	11.944	3293	3298	3302	rBV5	1003	1157	0.07%	0.009%
90	12.070	3328	3337	3339	rBV5	1922	2524	0.15%	0.020%
91	12.195	3359	3376	3396	rBV	717784	1171134	68.52%	9.137%
92	12.362	3423	3428	3432	rBV3	1237	1373	0.08%	0.011%
93	12.401	3439	3440	3444	rVB2	667	325	0.02%	0.003%
94	12.507	3469	3473	3477	rBV3	534	403	0.02%	0.003%
95	12.581	3494	3496	3499	rBV	338	256	0.01%	0.002%
96	12.677	3523	3526	3528	rVB	406	236	0.01%	0.002%
97	12.771	3547	3555	3564	rBV3	2704	4397	0.26%	0.034%
98	13.388	3743	3747	3750	rBV2	267	233	0.01%	0.002%
99	14.301	4028	4031	4032	rBV2	391	222	0.01%	0.002%
100	14.658	4139	4142	4148	rBV3	518	398	0.02%	0.003%

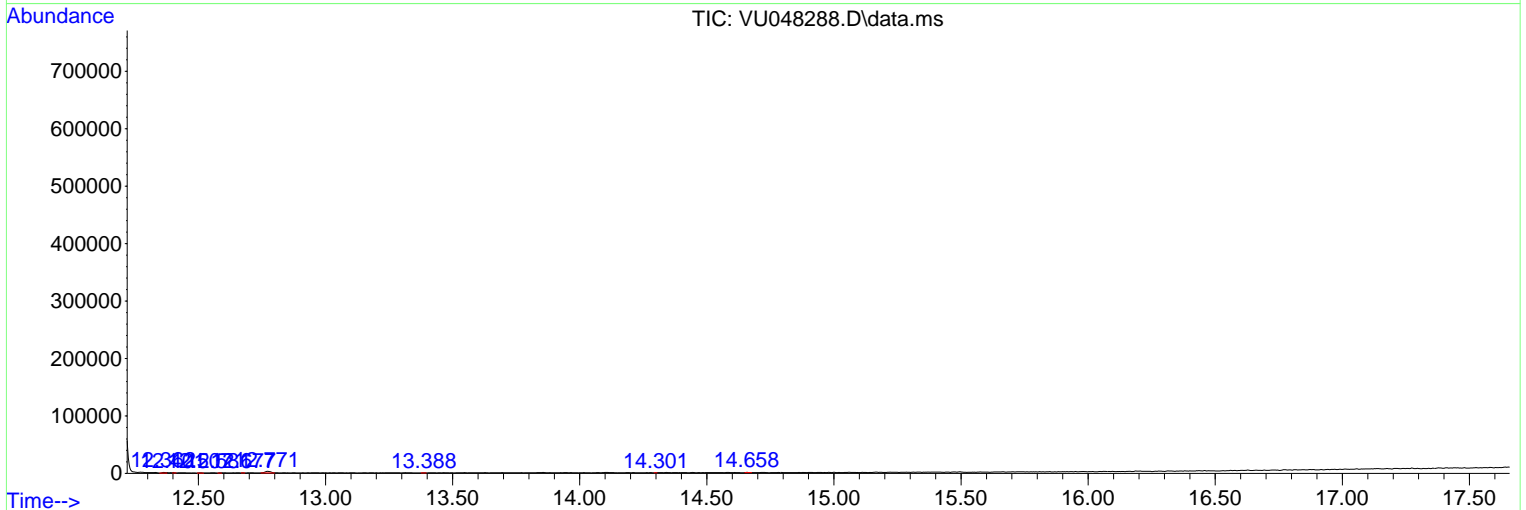
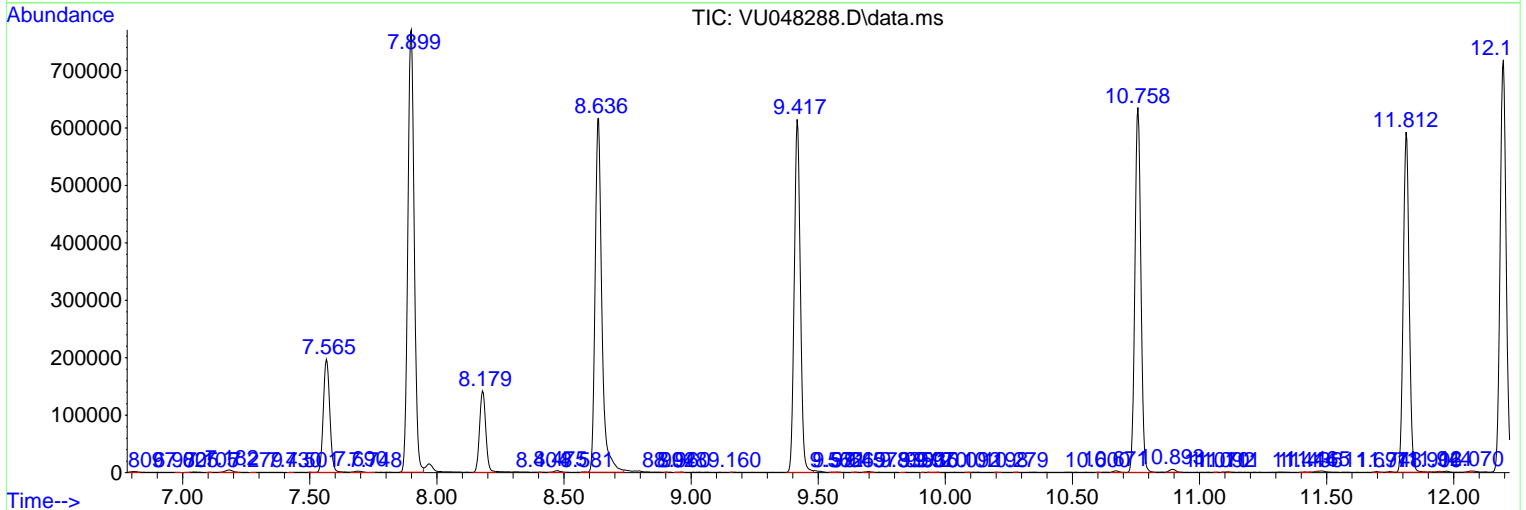
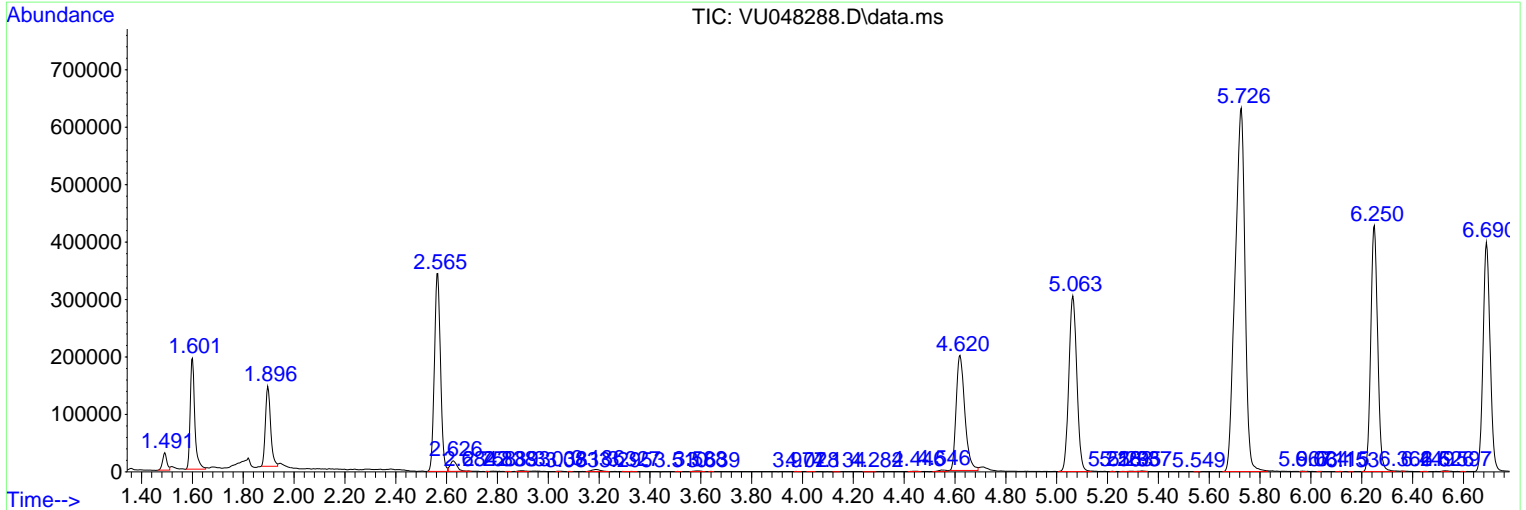
Sum of corrected areas: 12817864

Data Path : Z:\voasrv\HPCHEM1\MSVOA_U\Data\VU042522\
 Data File : VU048288.D
 Acq On : 25 Apr 2022 23:14
 Operator : SY/MD
 Sample : N2518-10
 Misc : 5.0mL/MSVOA_U/WATER
 ALS Vial : 32 Sample Multiplier: 1

Instrument :
 MSVOA_U
 ClientSampleId :
 EXES6

Quant Method : Z:\voasrv\HPCHEM1\MSVOA_U\Method\SFAMULM042522WMA.M
 Quant Title : VOC Analysis

TIC Library : C:\Database\NIST20.L
 TIC Integration Parameters: LSCINT.P



Library Search Compound Report

Data Path : Z:\voasrv\HPCHEM1\MSVOA_U\Data\VU042522\
Data File : VU048288.D
Acq On : 25 Apr 2022 23:14
Operator : SY/MD
Sample : N2518-10
Misc : 5.0mL/MSVOA_U/WATER
ALS Vial : 32 Sample Multiplier: 1

Instrument :
MSVOA_U
ClientSampleId :
EXES6

Quant Method : Z:\voasrv\HPCHEM1\MSVOA_U\Method\SFAMULM042522WMA.M
Quant Title : VOC Analysis

TIC Library : C:\Database\NIST20.L
TIC Integration Parameters: LSCINT.P

No Library Search Compounds Detected

Data Path : Z:\voasrv\HPCHEM1\MSVOA_U\Data\VU042522\
Data File : VU048288.D
Acq On : 25 Apr 2022 23:14
Operator : SY/MD
Sample : N2518-10
Misc : 5.0mL/MSVOA_U/WATER
ALS Vial : 32 Sample Multiplier: 1

Instrument :
MSVOA_U
ClientSampleId :
EXES6

Quant Method : Z:\voasrv\HPCHEM1\MSVOA_U\Method\SFAMULM042522WMA.M
Quant Title : VOC Analysis

TIC Library : C:\Database\NIST0.L
TIC Integration Parameters: LSCINT.P

TIC Top Hit name	RT	EstConc	Units	Response	--Internal Standard--			
					#	RT	Resp	Conc
