

Data Path : Z:\voasrv\HPCHEM1\MSVOA\_U\Data\VU042621\  
 Data File : VU043332.D  
 Acq On : 26 Apr 2021 17:49  
 Operator : SY/MD  
 Sample : M2124-10  
 Misc : 25.0mL/MSVOA\_U/WATER  
 ALS Vial : 18 Sample Multiplier: 1

Instrument :  
 MSVOA\_U  
 ClientSampled :  
 H4497

Quant Time: Apr 26 23:43:49 2021  
 Quant Method : Z:\voasrv\HPCHEM1\MSVOA\_U\Method\SFAMUTR041521WMA.M  
 Quant Title : TRACE VOA SFAM1.0  
 QLast Update : Mon Apr 26 23:40:31 2021  
 Response via : Initial Calibration

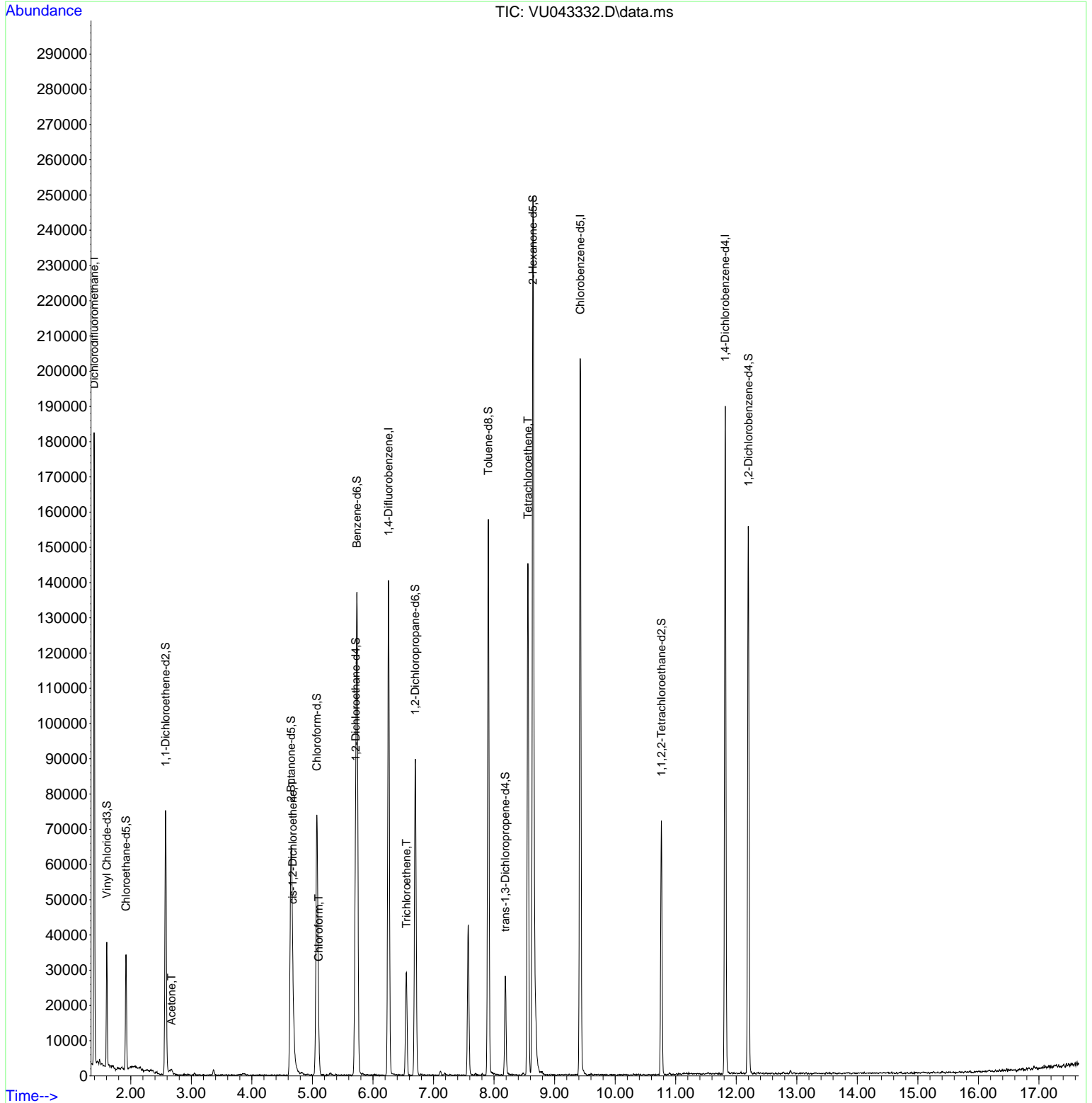
Compound	R.T.	QIon	Response	Conc	Units	Dev(Min)
-----						
Internal Standards						
1) 1,4-Difluorobenzene	6.256	114	101363	5.00	ug/L	# 0.00
28) Chlorobenzene-d5	9.423	117	101660	5.00	ug/L	0.00
58) 1,4-Dichlorobenzene-d4	11.819	152	47652	5.00	ug/L	0.00
System Monitoring Compounds						
4) Vinyl Chloride-d3	1.604	65	23181	4.50	ug/L	0.00
Spiked Amount	5.000	Range 40 - 130	Recovery	=	90.00%	
7) Chloroethane-d5	1.919	69	21842	4.50	ug/L	0.00
Spiked Amount	5.000	Range 65 - 130	Recovery	=	90.00%	
11) 1,1-Dichloroethene-d2	2.575	65	14914	5.00	ug/L	0.00
Spiked Amount	5.000	Range 60 - 125	Recovery	=	100.00%	
20) 2-Butanone-d5	4.649	46	128869	57.00	ug/L	0.00
Spiked Amount	50.000	Range 40 - 130	Recovery	=	114.00%	
24) Chloroform-d	5.073	84	64044	4.89	ug/L	0.00
Spiked Amount	5.000	Range 70 - 125	Recovery	=	97.80%	
26) 1,2-Dichloroethane-d4	5.713	65	41745	4.71	ug/L	0.00
Spiked Amount	5.000	Range 70 - 130	Recovery	=	94.20%	
32) Benzene-d6	5.735	84	111156	4.70	ug/L	0.00
Spiked Amount	5.000	Range 70 - 125	Recovery	=	94.00%	
36) 1,2-Dichloropropane-d6	6.700	67	39037	4.97	ug/L	0.00
Spiked Amount	5.000	Range 60 - 140	Recovery	=	99.40%	
41) Toluene-d8	7.906	98	94270	3.83	ug/L	0.00
Spiked Amount	5.000	Range 70 - 130	Recovery	=	76.60%	
43) trans-1,3-Dichloroprop...	8.186	79	14429	4.16	ug/L	0.00
Spiked Amount	5.000	Range 55 - 130	Recovery	=	83.20%	
46) 2-Hexanone-d5	8.642	63	76254	44.11	ug/L	0.00
Spiked Amount	50.000	Range 45 - 130	Recovery	=	88.22%	
56) 1,1,2,2-Tetrachloroeth...	10.764	84	33023	4.78	ug/L	0.00
Spiked Amount	5.000	Range 65 - 120	Recovery	=	95.60%	
66) 1,2-Dichlorobenzene-d4	12.201	152	38207	4.68	ug/L	0.00
Spiked Amount	5.000	Range 80 - 120	Recovery	=	93.60%	
-----						
Target Compounds						Qvalue
2) Dichlorodifluoromethane	1.395	85	2044	0.31	ug/L	89
13) Acetone	2.671	43	2404	1.45	ug/L	88
22) cis-1,2-Dichloroethene	4.674	96	1392	0.20	ug/L	# 81
25) Chloroform	5.102	83	7021	0.50	ug/L	91
34) Trichloroethene	6.552	95	9351	1.25	ug/L	94
47) Tetrachloroethene	8.558	164	30695	5.17	ug/L	94
-----						

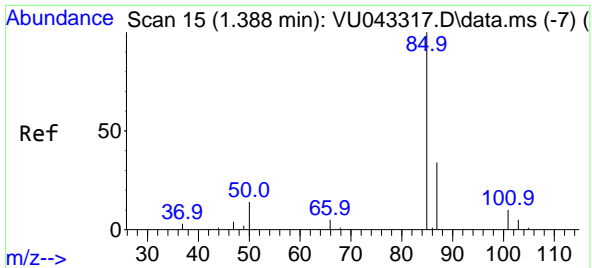
(#) = qualifier out of range (m) = manual integration (+) = signals summed

Data Path : Z:\voasrv\HPCHEM1\MSVOA\_U\Data\VU042621\  
 Data File : VU043332.D  
 Acq On : 26 Apr 2021 17:49  
 Operator : SY/MD  
 Sample : M2124-10  
 Misc : 25.0mL/MSVOA\_U/WATER  
 ALS Vial : 18 Sample Multiplier: 1

Instrument :  
 MSVOA\_U  
 ClientSampleID :  
 H4497

Quant Time: Apr 26 23:43:49 2021  
 Quant Method : Z:\voasrv\HPCHEM1\MSVOA\_U\Method\SFAMUTR041521WMA.M  
 Quant Title : TRACE VOA SFAM1.0  
 QLast Update : Mon Apr 26 23:40:31 2021  
 Response via : Initial Calibration

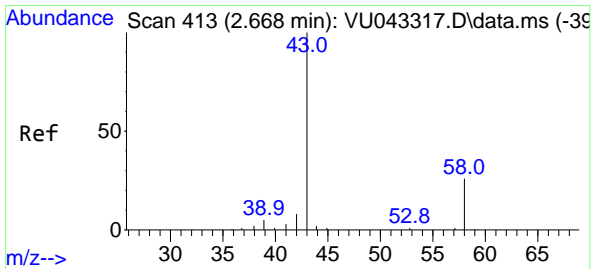
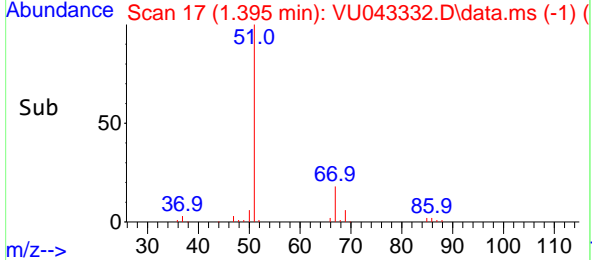
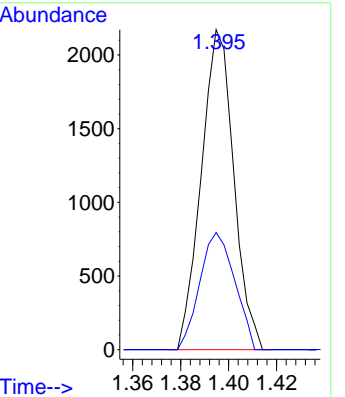
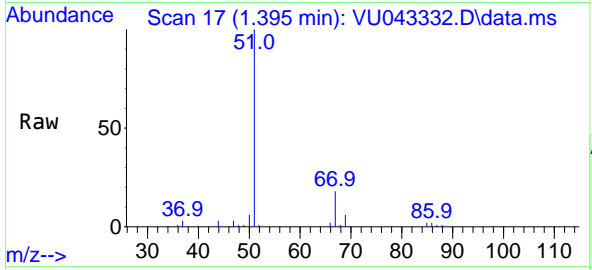




#2  
 Dichlorodifluoromethane  
 Concen: 0.31 ug/L  
 RT: 1.395 min Scan# 17  
 Delta R.T. 0.006 min  
 Lab File: VU043332.D  
 Acq: 26 Apr 2021 17:49

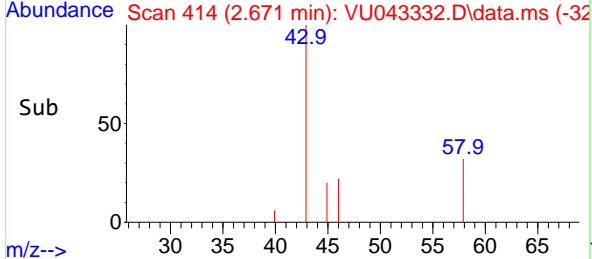
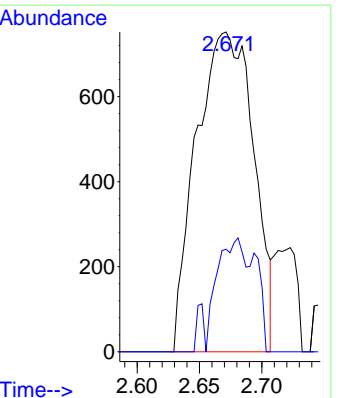
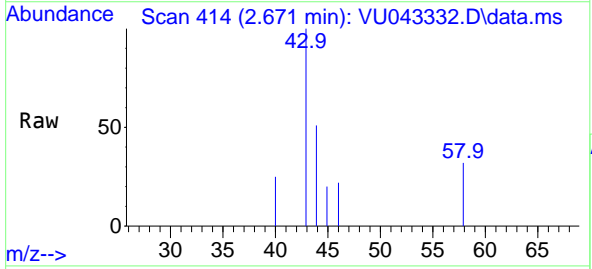
Instrument :  
 MSVOA\_U  
 ClientSampled :  
 H4497

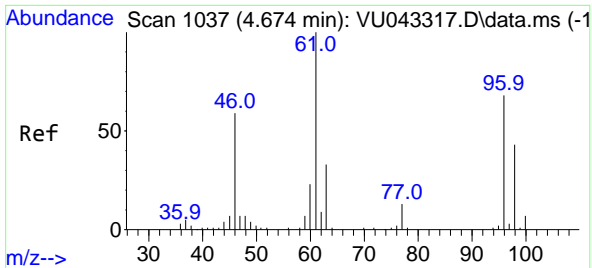
Tgt Ion: 85 Resp: 2044  
 Ion Ratio Lower Upper  
 85 100  
 87 39.3 26.3 39.5



#13  
 Acetone  
 Concen: 1.45 ug/L  
 RT: 2.671 min Scan# 414  
 Delta R.T. 0.003 min  
 Lab File: VU043332.D  
 Acq: 26 Apr 2021 17:49

Tgt Ion: 43 Resp: 2404  
 Ion Ratio Lower Upper  
 43 100  
 58 17.1 0.0 25.0

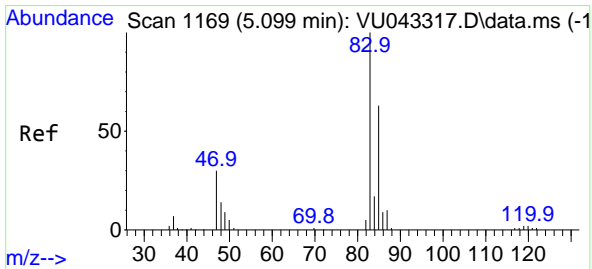
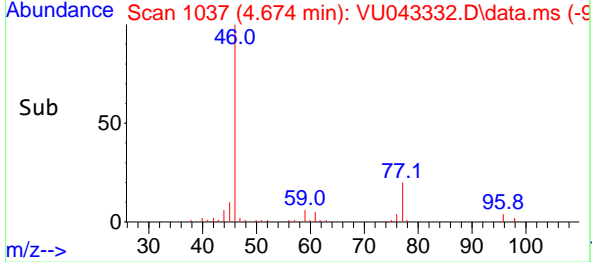
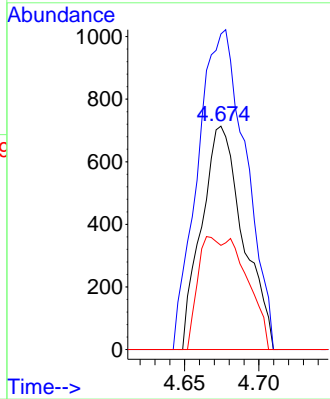
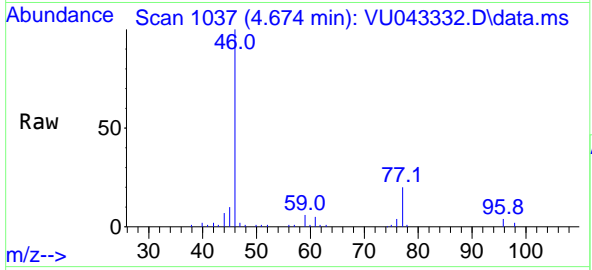




#22  
 cis-1,2-Dichloroethene  
 Concen: 0.20 ug/L  
 RT: 4.674 min Scan# 1037  
 Delta R.T. -0.000 min  
 Lab File: VU043332.D  
 Acq: 26 Apr 2021 17:49

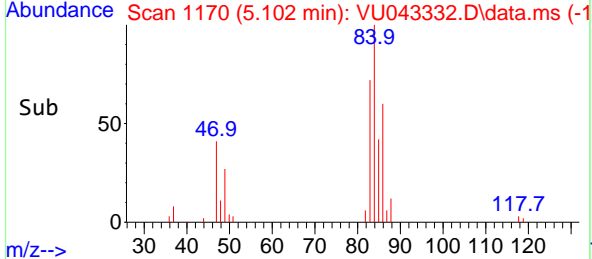
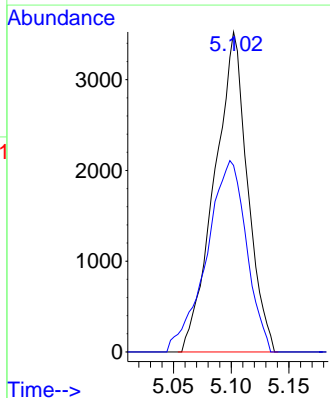
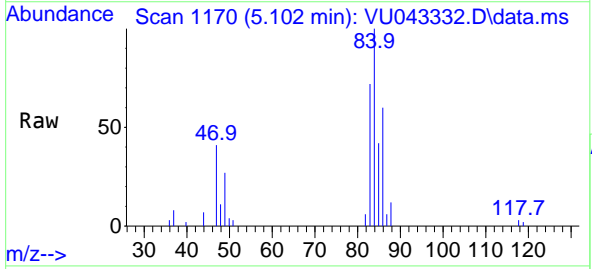
**Instrument :**  
 MSVOA\_U  
**ClientSampled :**  
 H4497

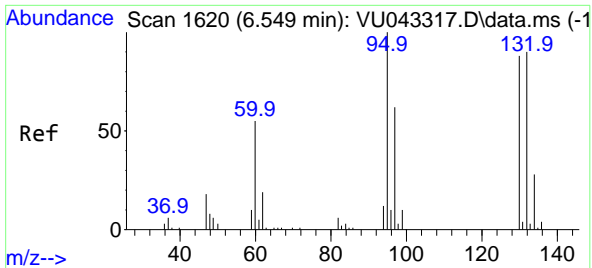
Tgt Ion	Resp	Lower	Upper
96	1392		
96	100		
61	141.2	87.4	162.4
98	46.6	47.7	88.5#



#25  
 Chloroform  
 Concen: 0.50 ug/L  
 RT: 5.102 min Scan# 1170  
 Delta R.T. 0.003 min  
 Lab File: VU043332.D  
 Acq: 26 Apr 2021 17:49

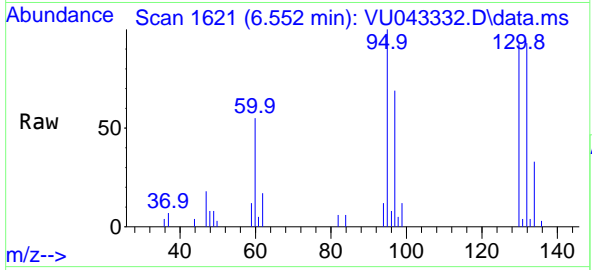
Tgt Ion	Resp	Lower	Upper
83	7021		
83	100		
85	58.3	45.6	84.8





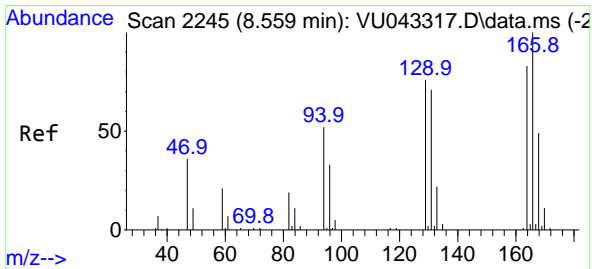
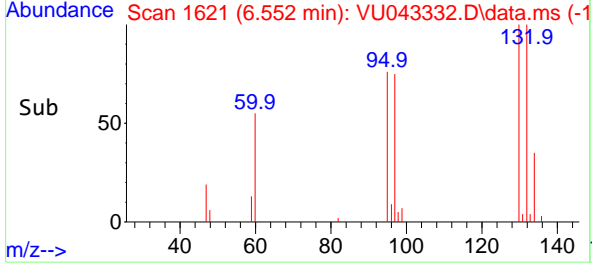
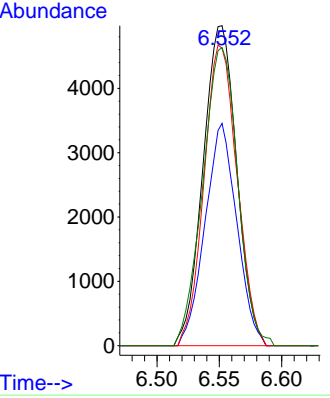
#34  
 Trichloroethene  
 Concen: 1.25 ug/L  
 RT: 6.552 min Scan# 1621  
 Delta R.T. 0.003 min  
 Lab File: VU043332.D  
 Acq: 26 Apr 2021 17:49

Instrument : MSVOA\_U  
 ClientSampled : H4497

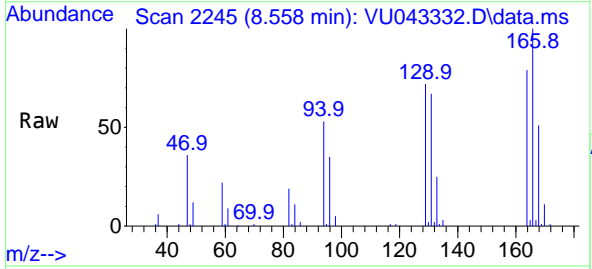


Tgt Ion: 95 Resp: 9351

Ion	Ratio	Lower	Upper
95	100		
97	69.4	45.8	85.2
132	92.9	68.7	127.7
130	93.1	70.1	130.3



#47  
 Tetrachloroethene  
 Concen: 5.17 ug/L  
 RT: 8.558 min Scan# 2245  
 Delta R.T. -0.000 min  
 Lab File: VU043332.D  
 Acq: 26 Apr 2021 17:49



Tgt Ion: 164 Resp: 30695

Ion	Ratio	Lower	Upper
164	100		
129	91.3	66.6	123.8
131	85.2	65.9	122.3
166	126.5	93.7	173.9

