

Data Path : Z:\voasrv\HPCHEM1\MSVOA\_U\Data\VU042623\  
 Data File : VU053914.D  
 Acq On : 26 Apr 2023 15:18  
 Operator : JC/MD  
 Sample : 02488-10  
 Misc : 25.0mL/MSVOA\_U/WATER  
 ALS Vial : 16 Sample Multiplier: 1

Instrument :  
 MSVOA\_U  
 ClientSampleId :  
 BHE65

Integration Parameters: rteint.p  
 Integrator: RTE  
 Smoothing : ON Filtering: 5  
 Sampling : 1 Min Area: 3 % of largest Peak  
 Start Thrs: 0.1 Max Peaks: 100  
 Stop Thrs : 0 Peak Location: TOP

If leading or trailing edge < 100 prefer < Baseline drop else tangent >  
 Peak separation: 5

Method : Z:\voasrv\HPCHEM1\MSVOA\_U\Method\SFAMUTR042423WMA.M  
 Title : TRACE VOA SFAM1.0

Signal : TIC: VU053914.D\data.ms

peak #	R.T. min	first scan	max scan	last scan	PK TY	peak height	corr. area	corr. % max.	% of total
1	1.359	3	6	19	rVB2	2730	3271	1.12%	0.134%
2	1.597	73	80	93	rVB	29080	35566	12.13%	1.454%
3	1.912	166	178	191	rVB	30687	45297	15.45%	1.852%
4	2.565	369	381	394	rBV	54105	87581	29.87%	3.580%
5	2.636	394	403	417	rVB2	2448	4577	1.56%	0.187%
6	3.044	522	530	539	rVB3	2111	3502	1.19%	0.143%
7	3.182	564	573	586	rVB4	1683	4148	1.41%	0.170%
8	4.623	1010	1021	1053	rBV	47053	120770	41.19%	4.937%
9	5.057	1142	1156	1182	rVB3	51829	121647	41.49%	4.973%
10	5.723	1341	1363	1386	rBV2	97591	259436	88.49%	10.605%
11	6.243	1512	1525	1542	rBV2	110616	214513	73.17%	8.769%
12	6.542	1609	1618	1631	rVB7	3040	5525	1.88%	0.226%
13	6.687	1649	1663	1679	rBV	63611	122403	41.75%	5.003%
14	7.562	1923	1935	1948	rBV2	30055	53365	18.20%	2.181%
15	7.893	2026	2038	2055	rBV	117174	205431	70.07%	8.397%
16	7.967	2055	2061	2072	rVB2	3102	5332	1.82%	0.218%
17	8.176	2115	2126	2140	rBV	19074	32254	11.00%	1.318%
18	8.468	2206	2217	2227	rVB2	9736	16279	5.55%	0.665%
19	8.549	2235	2242	2251	rBV6	2233	2940	1.00%	0.120%
20	8.629	2255	2267	2297	rBV	157356	293186	100.00%	11.985%
21	9.414	2497	2511	2531	rBV	154686	260776	88.95%	10.660%
22	10.751	2916	2927	2941	rBV2	56975	91460	31.20%	3.739%
23	10.890	2955	2970	2981	rBV3	10896	17700	6.04%	0.724%
24	11.806	3240	3255	3269	rBV	151118	248628	84.80%	10.163%
25	12.189	3362	3374	3390	rBV2	115959	190770	65.07%	7.798%

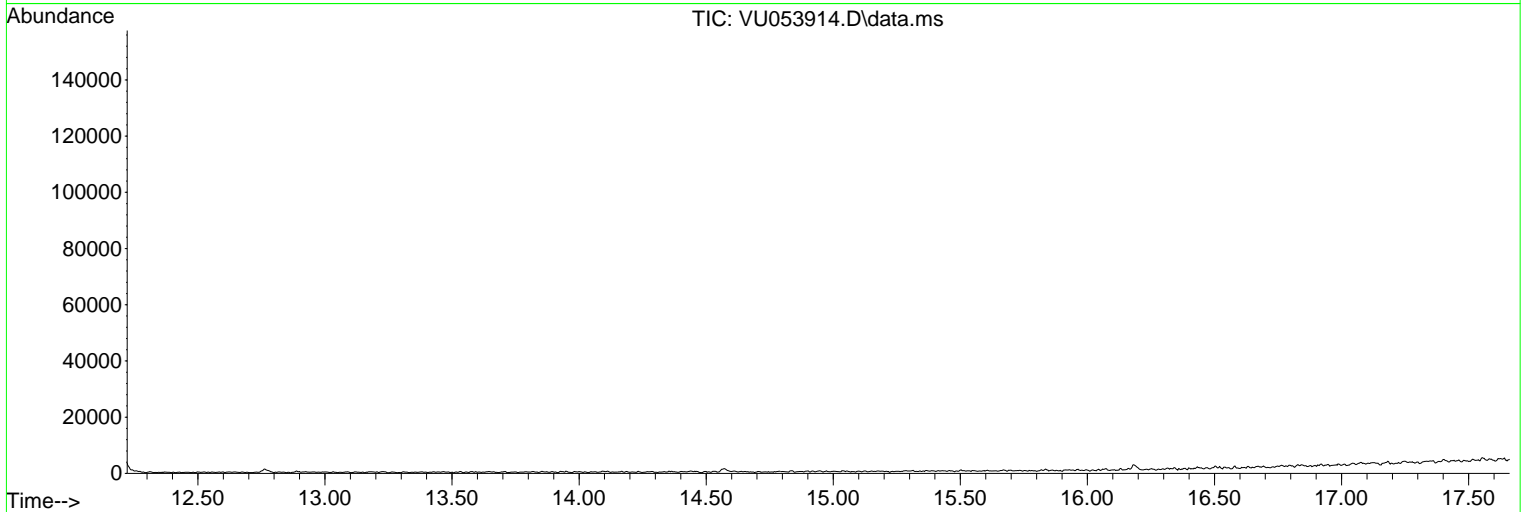
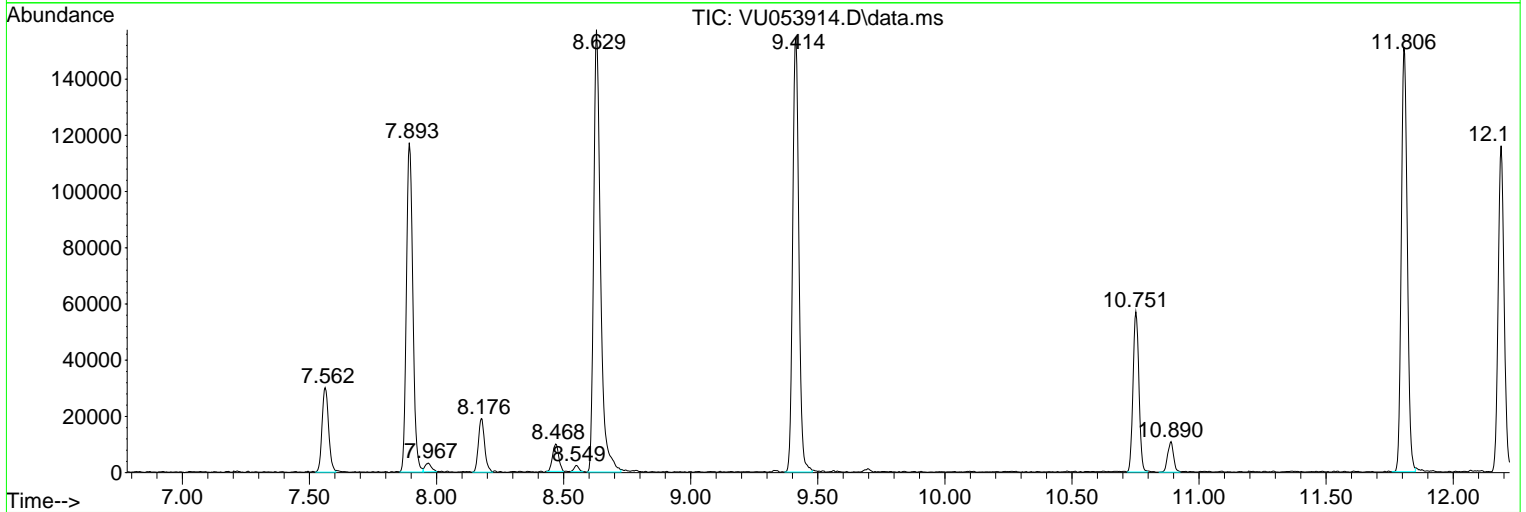
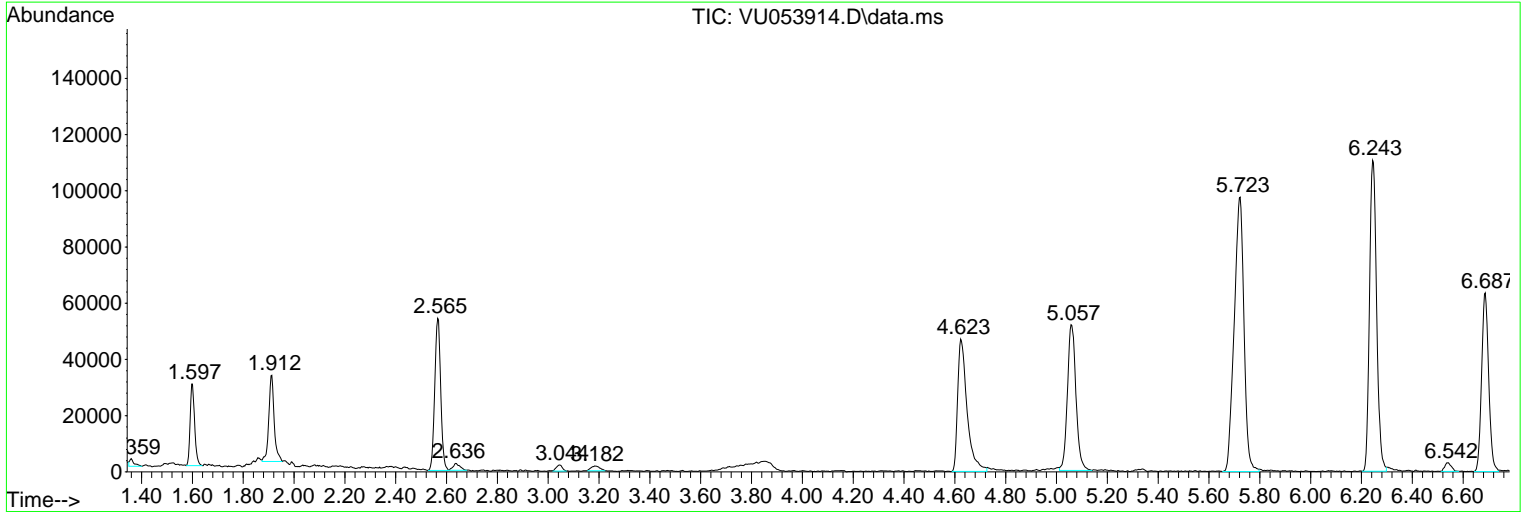
Sum of corrected areas: 2446357

Data Path : Z:\voasrv\HPCHEM1\MSVOA\_U\Data\VU042623\  
 Data File : VU053914.D  
 Acq On : 26 Apr 2023 15:18  
 Operator : JC/MD  
 Sample : 02488-10  
 Misc : 25.0mL/MSVOA\_U/WATER  
 ALS Vial : 16 Sample Multiplier: 1

Instrument :  
 MSVOA\_U  
 ClientSampleId :  
 BHE65

Quant Method : Z:\voasrv\HPCHEM1\MSVOA\_U\Method\SFAMUTR042423WMA.M  
 Quant Title : TRACE VOA SFAM1.0

TIC Library : C:\Database\NIST20.L  
 TIC Integration Parameters: LSCINT.P



Library Search Compound Report

Data Path : Z:\voasrv\HPCHEM1\MSVOA\_U\Data\VU042623\  
Data File : VU053914.D  
Acq On : 26 Apr 2023 15:18  
Operator : JC/MD  
Sample : 02488-10  
Misc : 25.0mL/MSVOA\_U/WATER  
ALS Vial : 16 Sample Multiplier: 1

Instrument :  
MSVOA\_U  
ClientSampleId :  
BHE65

Quant Method : Z:\voasrv\HPCHEM1\MSVOA\_U\Method\SFAMUTR042423WMA.M  
Quant Title : TRACE VOA SFAM1.0

TIC Library : C:\Database\NIST20.L  
TIC Integration Parameters: LSCINT.P

No Library Search Compounds Detected

\*\*\*\*\*

Data Path : Z:\voasrv\HPCHEM1\MSVOA\_U\Data\VU042623\  
Data File : VU053914.D  
Acq On : 26 Apr 2023 15:18  
Operator : JC/MD  
Sample : 02488-10  
Misc : 25.0mL/MSVOA\_U/WATER  
ALS Vial : 16 Sample Multiplier: 1

Instrument :  
MSVOA\_U  
ClientSampleId :  
BHE65

Quant Method : Z:\voasrv\HPCHEM1\MSVOA\_U\Method\SFAMUTR042423WMA.M  
Quant Title : TRACE VOA SFAM1.0

TIC Library : C:\Database\NIST0.L  
TIC Integration Parameters: LSCINT.P

TIC Top Hit name	RT	EstConc	Units	Response	--Internal Standard--			
					#	RT	Resp	Conc

---