

Data Path : Z:\voasrv\HPCHEM1\MSVOA_U\Data\VU042721\
 Data File : VU043348.D
 Acq On : 27 Apr 2021 12:51
 Operator : SY/MD
 Sample : M2127-14
 Misc : 25.0mL/MSVOA_U/WATER
 ALS Vial : 9 Sample Multiplier: 1

Instrument :
 MSVOA_U
 ClientSampled :
 E0AB5

Manual Integrations
 APPROVED

MMDadoda
 4/28/2021 1:09:02 PM

Quant Time: Apr 27 23:48:52 2021
 Quant Method : Z:\voasrv\HPCHEM1\MSVOA_U\Method\SFAMUTR041521WMA.M
 Quant Title : TRACE VOA SFAM1.0
 QLast Update : Tue Apr 27 23:46:47 2021
 Response via : Initial Calibration

Compound	R.T.	QIon	Response	Conc	Units	Dev(Min)

Internal Standards						
1) 1,4-Difluorobenzene	6.256	114	129615	5.00	ug/L	# 0.00
28) Chlorobenzene-d5	9.423	117	126656	5.00	ug/L	0.00
58) 1,4-Dichlorobenzene-d4	11.819	152	62724	5.00	ug/L	0.00
System Monitoring Compounds						
4) Vinyl Chloride-d3	1.604	65	25034	3.80	ug/L	0.00
Spiked Amount	5.000	Range 40 - 130	Recovery	=	76.00%	
7) Chloroethane-d5	1.919	69	23151	3.73	ug/L	0.00
Spiked Amount	5.000	Range 65 - 130	Recovery	=	74.60%	
11) 1,1-Dichloroethene-d2	2.575	65	17052	4.47	ug/L	0.00
Spiked Amount	5.000	Range 60 - 125	Recovery	=	89.40%	
20) 2-Butanone-d5	4.658	46	129475	44.79	ug/L	0.00
Spiked Amount	50.000	Range 40 - 130	Recovery	=	89.58%	
24) Chloroform-d	5.073	84	75581	4.51	ug/L	0.00
Spiked Amount	5.000	Range 70 - 125	Recovery	=	90.20%	
26) 1,2-Dichloroethane-d4	5.713	65	46484	4.10	ug/L	0.00
Spiked Amount	5.000	Range 70 - 130	Recovery	=	82.00%	
32) Benzene-d6	5.735	84	130896	4.44	ug/L	0.00
Spiked Amount	5.000	Range 70 - 125	Recovery	=	88.80%	
36) 1,2-Dichloropropane-d6	6.697	67	44656	4.57	ug/L	0.00
Spiked Amount	5.000	Range 60 - 140	Recovery	=	91.40%	
41) Toluene-d8	7.906	98	110860	3.62	ug/L	0.00
Spiked Amount	5.000	Range 70 - 130	Recovery	=	72.40%	
43) trans-1,3-Dichloroprop...	8.185	79	16775	3.88	ug/L	0.00
Spiked Amount	5.000	Range 55 - 130	Recovery	=	77.60%	
46) 2-Hexanone-d5	8.645	63	83732	38.87	ug/L	0.00
Spiked Amount	50.000	Range 45 - 130	Recovery	=	77.74%	
56) 1,1,2,2-Tetrachloroeth...	10.764	84	37865	4.40	ug/L	0.00
Spiked Amount	5.000	Range 65 - 120	Recovery	=	88.00%	
66) 1,2-Dichlorobenzene-d4	12.201	152	46784	4.35	ug/L	0.00
Spiked Amount	5.000	Range 80 - 120	Recovery	=	87.00%	

Target Compounds						Qvalue
3) Chloromethane	1.523	50	2431	0.30	ug/L	85
13) Acetone	2.674	43	24243m	11.41	ug/L	
33) Benzene	5.780	78	30898	0.91	ug/L	100
53) m,p-Xylene	9.700	106	975	0.06	ug/L	92
54) o-Xylene	10.108	106	1186	0.08	ug/L	86
65) 1,4-Dichlorobenzene	11.841	146	2378	0.12	ug/L	89

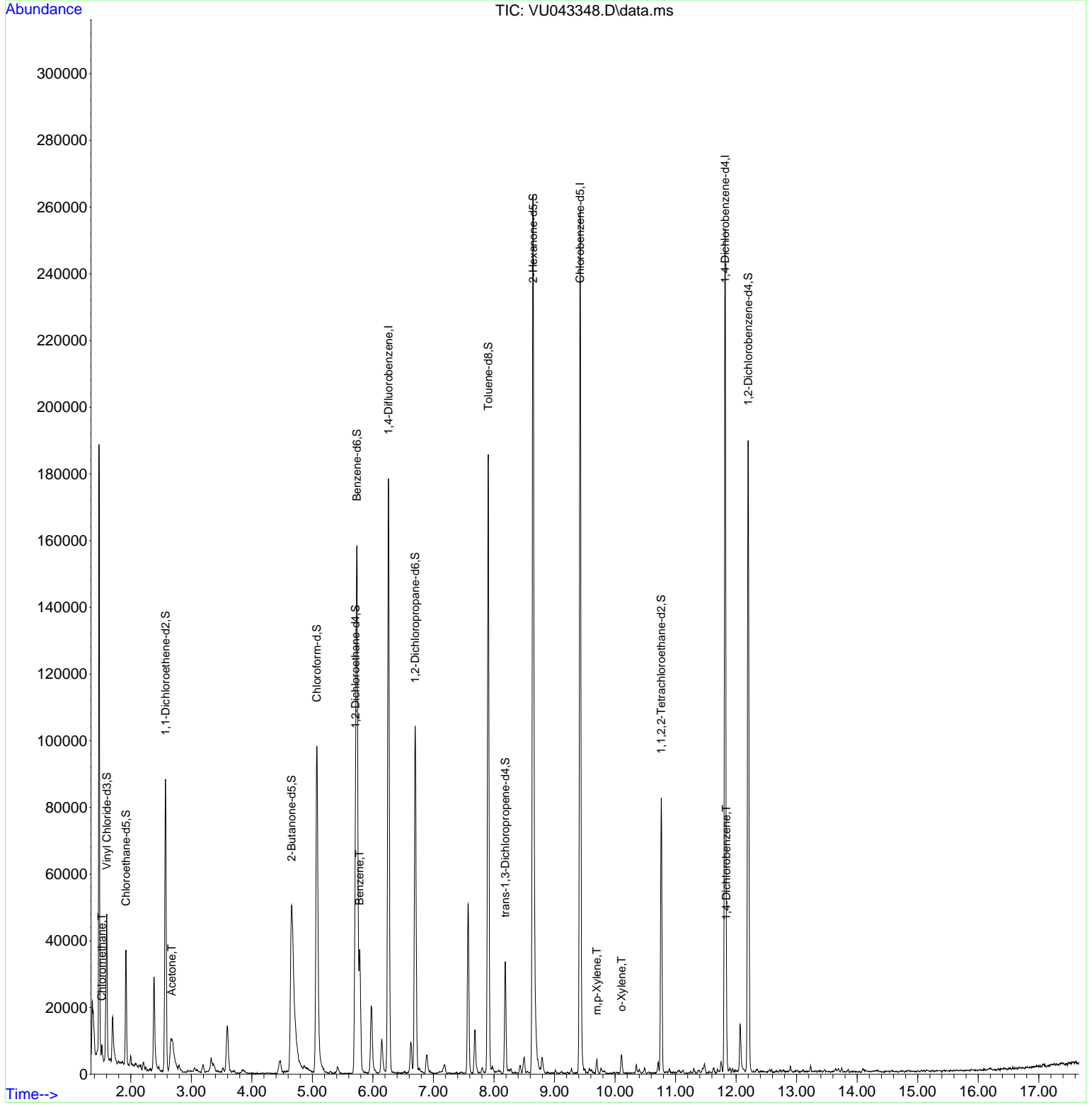
(#) = qualifier out of range (m) = manual integration (+) = signals summed

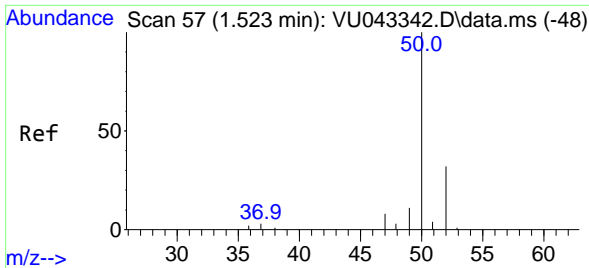
Data Path : Z:\voasrv\HPCHEM1\MSVOA_U\Data\VU042721\
 Data File : VU043348.D
 Acq On : 27 Apr 2021 12:51
 Operator : SY/MD
 Sample : M2127-14
 Misc : 25.0mL/MSVOA_U/WATER
 ALS Vial : 9 Sample Multiplier: 1

Instrument :
 MSVOA_U
 Client Sampled :
 E0AB5

Manual Integrations
APPROVED
 MMDadoda
 4/28/2021 1:09:02 PM

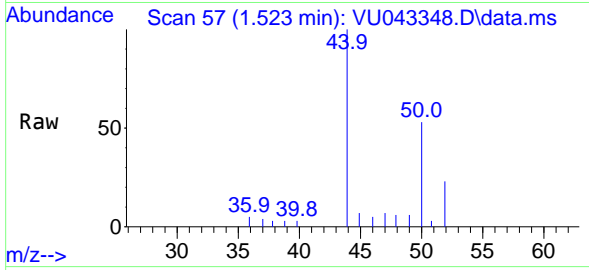
Quant Time: Apr 27 23:48:52 2021
 Quant Method : Z:\voasrv\HPCHEM1\MSVOA_U\Method\SFAMUTR041521WMA.M
 Quant Title : TRACE VOA SFAM1.0
 QLast Update : Tue Apr 27 23:46:47 2021
 Response via : Initial Calibration





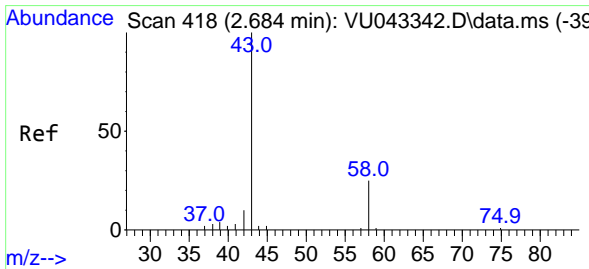
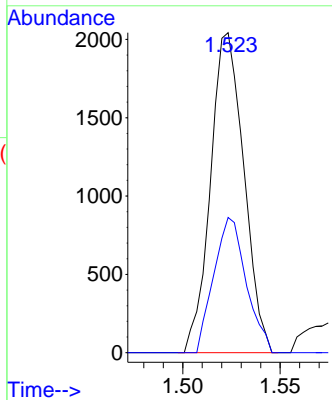
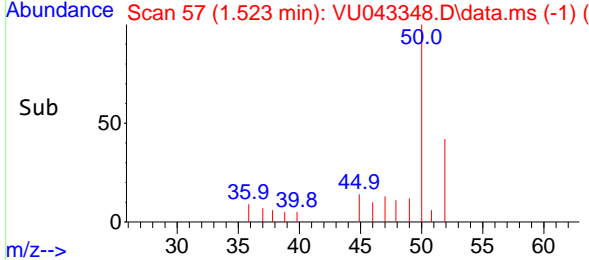
#3
 Chloromethane
 Concen: 0.30 ug/L
 RT: 1.523 min Scan# 57
 Delta R.T. -0.000 min
 Lab File: VU043348.D
 Acq: 27 Apr 2021 12:51

Instrument : MSVOA_U
 ClientSampled : E0AB5

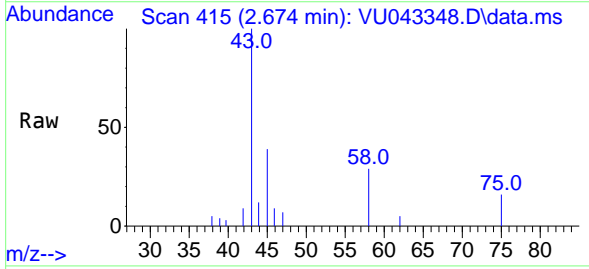


Tgt Ion: 50 Resp: 2431
 Ion Ratio Lower Upper
 50 100
 52 42.2 23.6 43.8

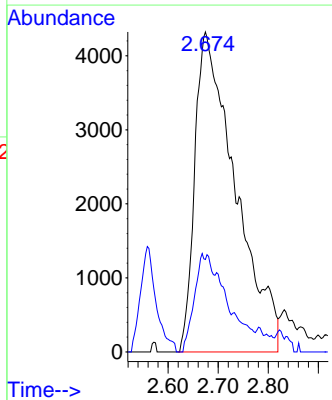
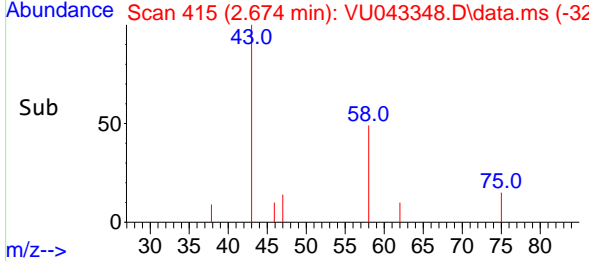
Manual Integrations
APPROVED
 MMDadoda
 4/28/2021 1:09:02 PM

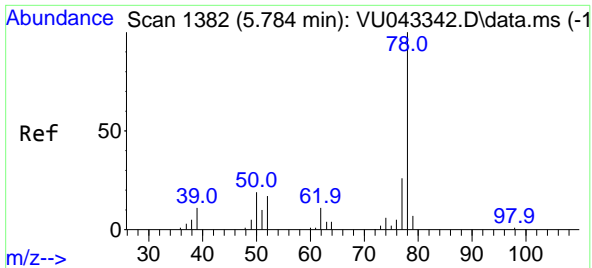


#13
 Acetone
 Concen: 11.41 ug/L m
 RT: 2.674 min Scan# 415
 Delta R.T. -0.010 min
 Lab File: VU043348.D
 Acq: 27 Apr 2021 12:51



Tgt Ion: 43 Resp: 24243
 Ion Ratio Lower Upper
 43 100
 58 8.5 0.0 25.0

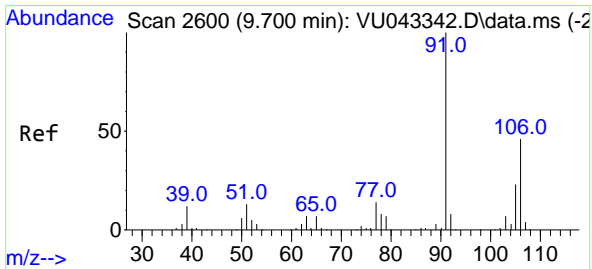
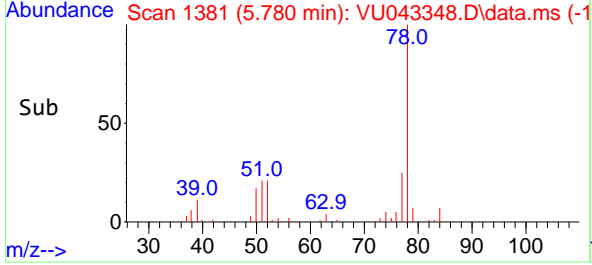
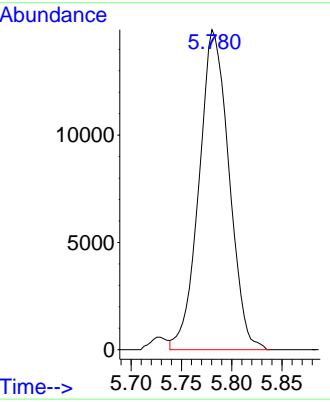
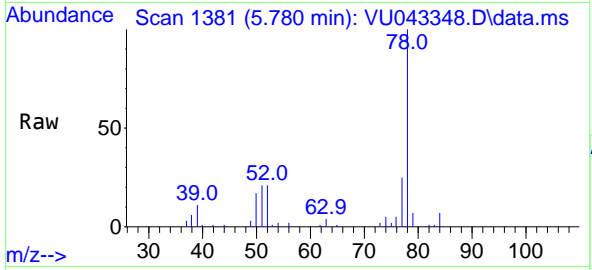




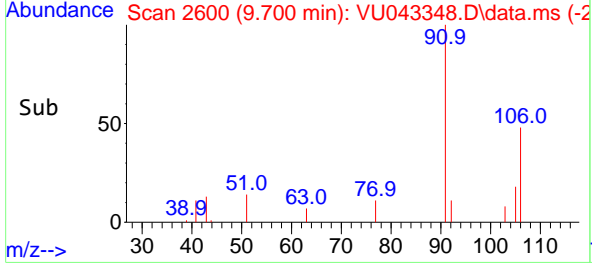
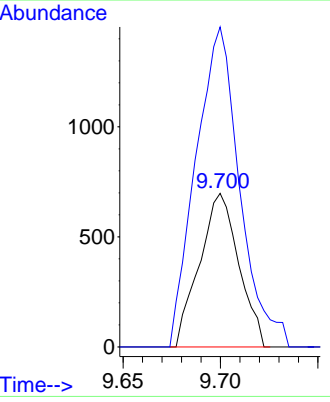
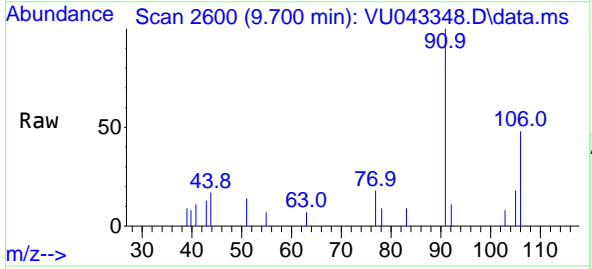
#33
Benzene
Concen: 0.91 ug/L
RT: 5.780 min Scan# 1381
Delta R.T. -0.003 min
Lab File: VU043348.D
Acq: 27 Apr 2021 12:51
Tgt Ion: 78 Resp: 30898

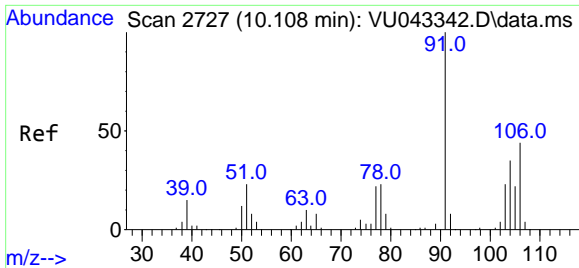
Instrument : MSVOA_U
ClientSampled : E0AB5

Manual Integrations APPROVED
MMDadoda
4/28/2021 1:09:02 PM



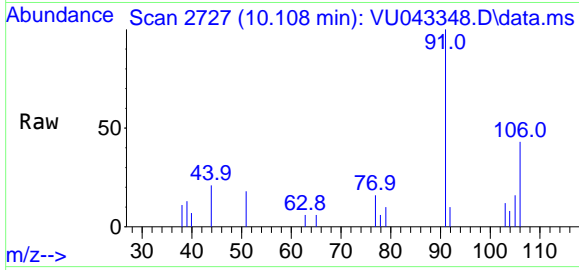
#53
m,p-Xylene
Concen: 0.06 ug/L
RT: 9.700 min Scan# 2600
Delta R.T. -0.000 min
Lab File: VU043348.D
Acq: 27 Apr 2021 12:51
Tgt Ion:106 Resp: 975
Ion Ratio Lower Upper
106 100
91 208.3 137.6 255.6





#54
 o-Xylene
 Concen: 0.08 ug/L
 RT: 10.108 min Scan# 2727
 Delta R.T. -0.000 min
 Lab File: VU043348.D
 Acq: 27 Apr 2021 12:51

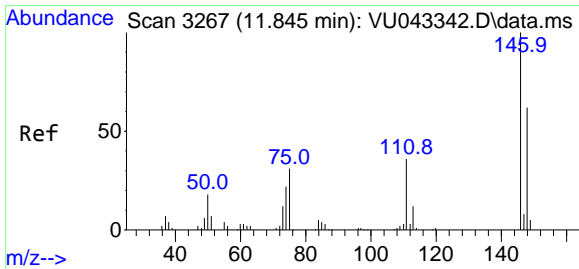
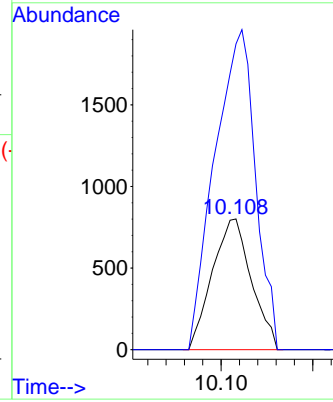
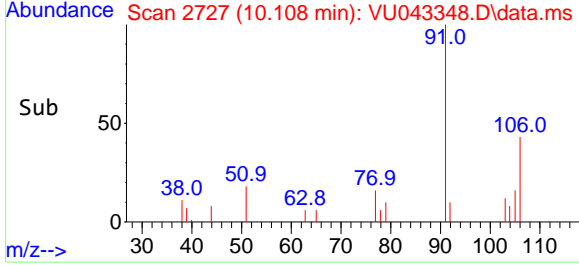
Instrument :
 MSVOA_U
 ClientSampled :
 E0AB5



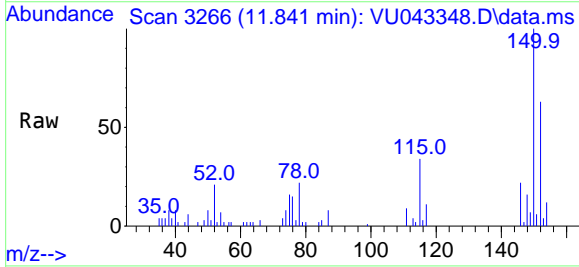
Tgt Ion:106 Resp: 1186
 Ion Ratio Lower Upper
 106 100
 91 234.0 148.5 275.9

Manual Integrations
 APPROVED

MMDadoda
 4/28/2021 1:09:02 PM



#65
 1,4-Dichlorobenzene
 Concen: 0.12 ug/L
 RT: 11.841 min Scan# 3266
 Delta R.T. -0.003 min
 Lab File: VU043348.D
 Acq: 27 Apr 2021 12:51



Tgt Ion:146 Resp: 2378
 Ion Ratio Lower Upper
 146 100
 111 40.7 26.7 49.5
 148 73.7 43.9 81.5

