

Data Path : Z:\VOASRV\HPCHEM1\MSVOA U\DATA\VU042820\
 Data File : VU037890.D
 Acq On : 28 Apr 2020 20:29
 Operator : JC/MD
 Sample : L2395-03 500X
 Misc : 5.0mL/MSVOA U/WATER
 ALS Vial : 16 Sample Multiplier: 1

Integration Parameters: LSCINT.P

Integrator: RTE
 Smoothing : OFF Filtering: 5
 Sampling : 1 Min Area: 0 % of largest Peak
 Start Thrs: 0.2 Max Peaks: 100
 Stop Thrs : 0 Peak Location: TOP

If leading or trailing edge < 100 prefer < Baseline drop else tangent >
 Peak separation: 5

Method : Z:\VOASRV\HPCHEM1\MSVOA_U\METHOD\SOMULM042320WMA.M
 Title : VOC Analysis

Signal : TIC

peak #	R.T. min	first scan	max scan	last scan	PK TY	peak height	corr. area	corr. % max.	% of total
1	1.610	77	84	99	rBV	339462	351833	13.60%	1.526%
2	1.928	175	183	196	rVB	269926	355104	13.73%	1.540%
3	2.591	376	389	405	rBV2	517310	894710	34.59%	3.881%
4	2.870	471	476	479	rBV4	750	805	0.03%	0.003%
5	2.890	480	482	488	rVV4	870	718	0.03%	0.003%
6	3.009	516	519	525	rVB5	778	478	0.02%	0.002%
7	3.073	528	539	556	rVB2	13149	24779	0.96%	0.107%
8	3.221	571	585	599	rVB	18051	40576	1.57%	0.176%
9	3.391	635	638	643	rVB5	942	850	0.03%	0.004%
10	3.623	705	710	714	rBV3	626	610	0.02%	0.003%
11	3.665	719	723	726	rBV2	428	487	0.02%	0.002%
12	3.906	791	798	801	rBV5	1307	1688	0.07%	0.007%
13	4.015	826	832	835	rVV3	813	664	0.03%	0.003%
14	4.034	835	838	842	rVV3	690	586	0.02%	0.003%
15	4.211	890	893	896	rVB3	857	535	0.02%	0.002%
16	4.260	904	908	913	rBV3	446	432	0.02%	0.002%
17	4.366	938	941	946	rVB2	622	484	0.02%	0.002%
18	4.395	946	950	953	rBV2	580	494	0.02%	0.002%
19	4.665	1014	1034	1065	rBV2	344320	880043	34.02%	3.818%
20	4.915	1107	1112	1115	rBV4	768	754	0.03%	0.003%
21	5.102	1151	1170	1189	rBV	452556	975815	37.72%	4.233%
22	5.353	1231	1248	1266	rBV2	76956	176047	6.81%	0.764%
23	5.517	1293	1299	1306	rVB4	583	835	0.03%	0.004%
24	5.758	1350	1374	1404	rBV2	973624	2586808	100.00%	11.221%
25	5.919	1420	1424	1426	rBV3	662	527	0.02%	0.002%
26	6.279	1518	1536	1569	rBV	827144	1574423	60.86%	6.830%
27	6.571	1612	1627	1654	rVV	1058562	1968262	76.09%	8.538%
28	6.719	1659	1673	1692	rVV	616344	1199894	46.39%	5.205%
29	6.838	1703	1710	1714	rBV6	1892	2432	0.09%	0.011%
30	6.899	1727	1729	1735	rVB5	1072	905	0.03%	0.004%
31	7.002	1759	1761	1766	rVB2	560	483	0.02%	0.002%
32	7.028	1766	1769	1772	rBV4	785	512	0.02%	0.002%
33	7.073	1778	1783	1785	rBV	450	398	0.02%	0.002%
34	7.208	1814	1825	1834	rBV6	3839	7071	0.27%	0.031%

Data Path : Z:\VOASRV\HPCHEM1\MSVOA U\DATA\VU042820\
 Data File : VU037890.D
 Acq On : 28 Apr 2020 20:29
 Operator : JC/MD
 Sample : L2395-03 500X
 Misc : 5.0mL/MSVOA U/WATER
 ALS Vial : 16 Sample Multiplier: 1

Integration Parameters: LSCINT.P

Integrator: RTE
 Smoothing : OFF Filtering: 5
 Sampling : 1 Min Area: 0 % of largest Peak
 Start Thrs: 0.2 Max Peaks: 100
 Stop Thrs : 0 Peak Location: TOP

If leading or trailing edge < 100 prefer < Baseline drop else tangent >
 Peak separation: 5

Method : Z:\VOASRV\HPCHEM1\MSVOA_U\METHOD\SOMULM042320WMA.M
 Title : VOC Analysis

35	7.411	1885	1888	1891	rVB2	573	396	0.02%	0.002%
36	7.478	1908	1909	1916	rVB3	591	467	0.02%	0.002%
37	7.520	1916	1922	1926	rBV	564	576	0.02%	0.002%
38	7.591	1930	1944	1961	rBV	340777	582692	22.53%	2.528%
39	7.710	1974	1981	1986	rVB7	2494	3098	0.12%	0.013%
40	7.816	2012	2014	2020	rVB3	902	597	0.02%	0.003%
41	7.922	2032	2047	2085	rBV	1168936	2133365	82.47%	9.254%
42	8.054	2085	2088	2091	rBV2	711	417	0.02%	0.002%
43	8.201	2121	2134	2151	rBV	239560	396366	15.32%	1.719%
44	8.398	2190	2195	2196	rBV2	724	551	0.02%	0.002%
45	8.488	2215	2223	2233	rVB5	2900	5140	0.20%	0.022%
46	8.574	2247	2250	2254	rBV3	593	441	0.02%	0.002%
47	8.594	2254	2256	2260	rVB2	729	446	0.02%	0.002%
48	8.655	2260	2275	2313	rBV	938760	1679915	64.94%	7.287%
49	8.928	2350	2360	2372	rBV3	14378	24470	0.95%	0.106%
50	9.041	2390	2395	2397	rBV2	825	658	0.03%	0.003%
51	9.275	2462	2468	2470	rBV4	683	650	0.03%	0.003%
52	9.436	2502	2518	2550	rBV	1162026	2000383	77.33%	8.677%
53	9.578	2559	2562	2564	rBV3	846	604	0.02%	0.003%
54	9.642	2577	2582	2587	rVB3	707	627	0.02%	0.003%
55	9.709	2594	2603	2615	rBV3	5565	9533	0.37%	0.041%
56	9.902	2660	2663	2667	rVB2	642	384	0.01%	0.002%
57	9.944	2673	2676	2681	rVB3	388	400	0.02%	0.002%
58	9.970	2681	2684	2686	rBV2	659	405	0.02%	0.002%
59	10.118	2719	2730	2740	rBV4	8854	14510	0.56%	0.063%
60	10.230	2761	2765	2768	rBV2	456	400	0.02%	0.002%
61	10.259	2771	2774	2777	rVB3	617	422	0.02%	0.002%
62	10.327	2791	2795	2798	rBV2	562	452	0.02%	0.002%
63	10.372	2805	2809	2815	rVB2	635	695	0.03%	0.003%
64	10.529	2854	2858	2863	rVB4	594	497	0.02%	0.002%
65	10.571	2866	2871	2873	rBV	506	398	0.02%	0.002%
66	10.658	2894	2898	2903	rVB2	757	735	0.03%	0.003%
67	10.690	2903	2908	2914	rVB2	418	515	0.02%	0.002%
68	10.771	2919	2933	2954	rBV	823701	1313832	50.79%	5.699%
69	10.880	2963	2967	2969	rBV	653	499	0.02%	0.002%
70	11.105	3032	3037	3043	rBV3	1138	1526	0.06%	0.007%
71	11.314	3095	3102	3106	rBV4	879	1246	0.05%	0.005%

Data Path : Z:\VOASRV\HPCHEM1\MSVOA U\DATA\VU042820\
 Data File : VU037890.D
 Acq On : 28 Apr 2020 20:29
 Operator : JC/MD
 Sample : L2395-03 500X
 Misc : 5.0mL/MSVOA U/WATER
 ALS Vial : 16 Sample Multiplier: 1

Integration Parameters: LSCINT.P

Integrator: RTE
 Smoothing : OFF Filtering: 5
 Sampling : 1 Min Area: 0 % of largest Peak
 Start Thrs: 0.2 Max Peaks: 100
 Stop Thrs : 0 Peak Location: TOP

If leading or trailing edge < 100 prefer < Baseline drop else tangent >
 Peak separation: 5

Method : Z:\VOASRV\HPCHEM1\MSVOA_U\METHOD\SOMULM042320WMA.M
 Title : VOC Analysis

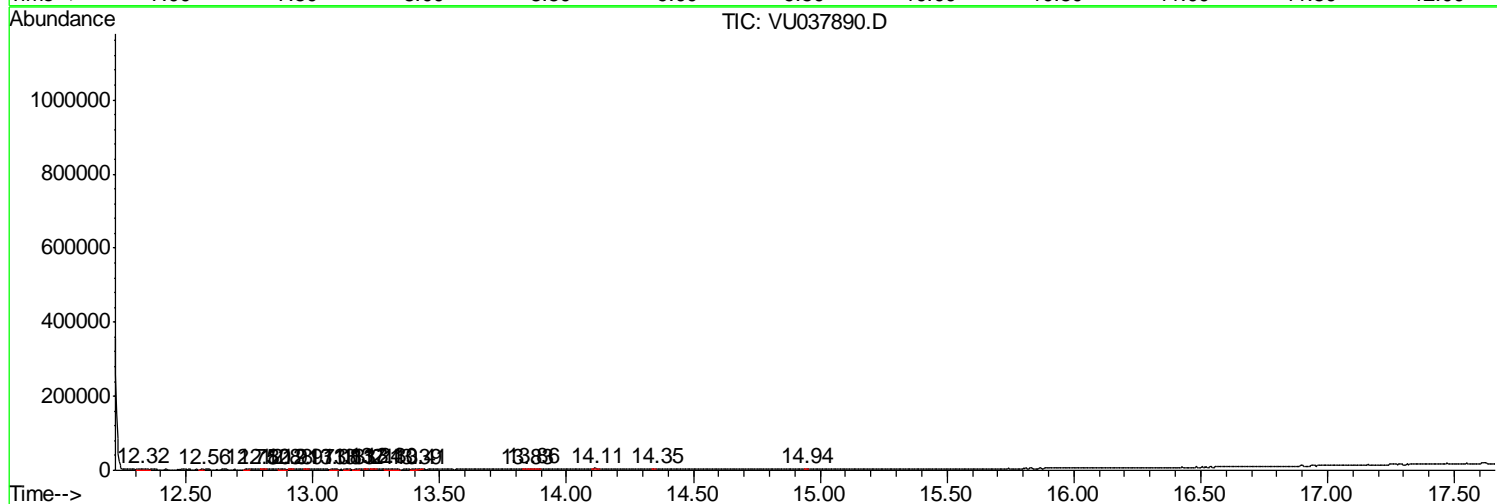
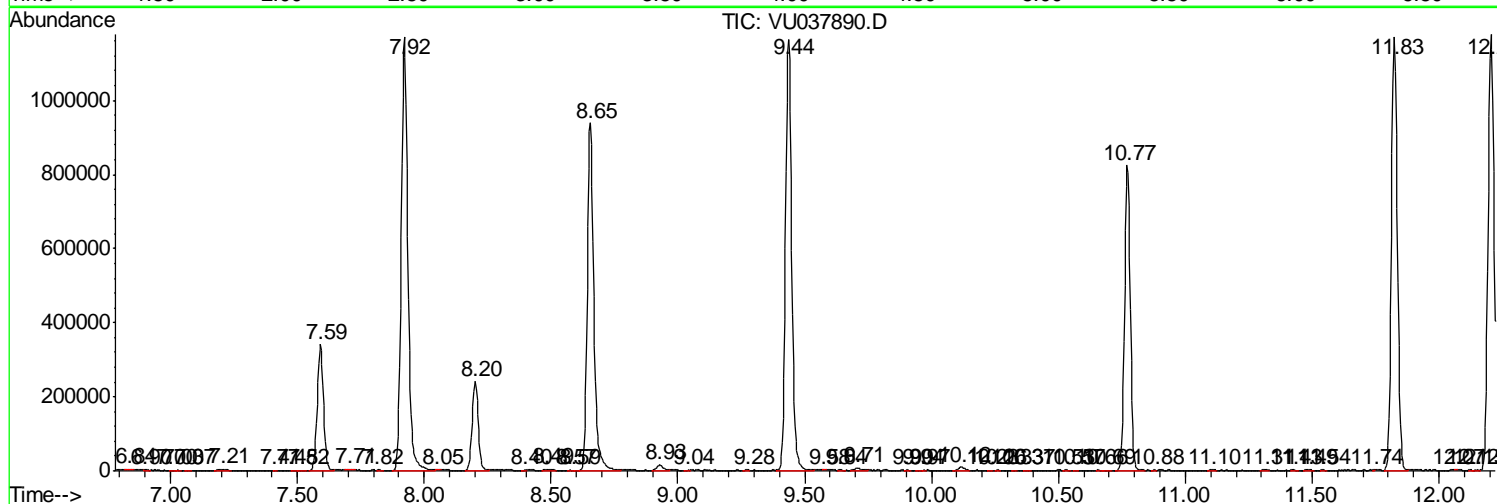
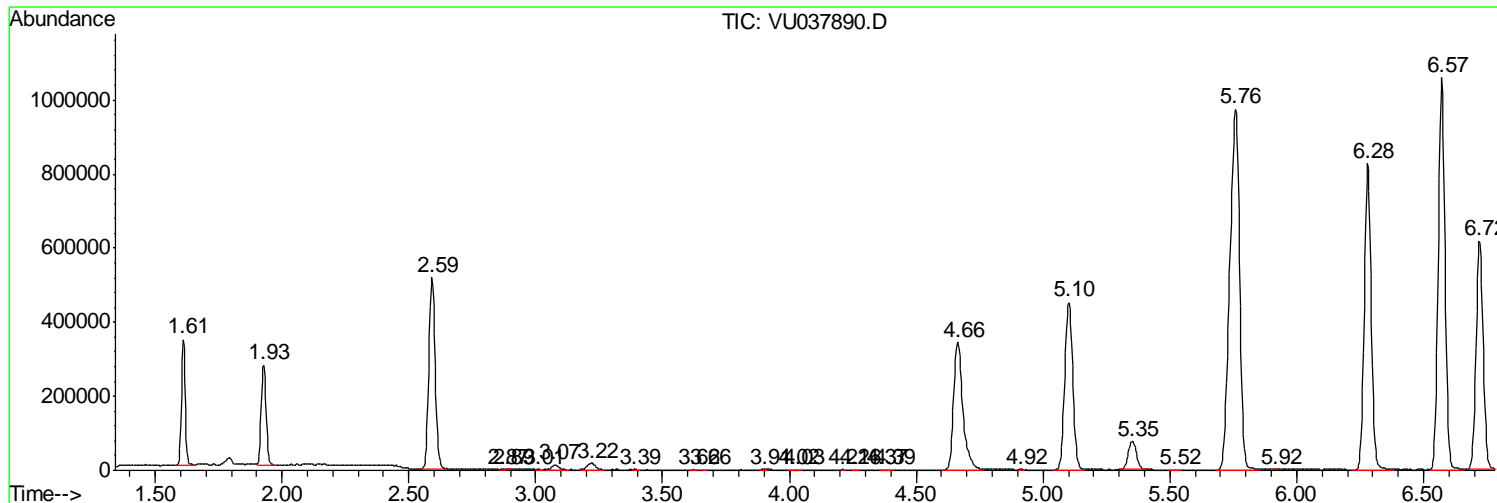
72	11.426	3133	3137	3142	rVV5	720	700	0.03%	0.003%
73	11.488	3149	3156	3161	rVB6	1351	1855	0.07%	0.008%
74	11.539	3169	3172	3177	rBV3	492	395	0.02%	0.002%
75	11.745	3233	3236	3237	rBV2	986	516	0.02%	0.002%
76	11.825	3247	3261	3278	rBV	1170222	1892997	73.18%	8.212%
77	12.066	3334	3336	3338	rBV2	765	453	0.02%	0.002%
78	12.124	3351	3354	3356	rVB2	792	474	0.02%	0.002%
79	12.150	3356	3362	3365	rBV3	447	519	0.02%	0.002%
80	12.205	3365	3379	3395	rBV	1176631	1896144	73.30%	8.225%
81	12.320	3409	3415	3426	rBV6	2287	4128	0.16%	0.018%
82	12.561	3486	3490	3493	rBV2	550	444	0.02%	0.002%
83	12.748	3541	3548	3549	rBV3	690	719	0.03%	0.003%
84	12.799	3561	3564	3569	rVV2	821	701	0.03%	0.003%
85	12.883	3584	3590	3594	rVB3	856	1000	0.04%	0.004%
86	12.912	3596	3599	3602	rBV2	1159	741	0.03%	0.003%
87	12.973	3615	3618	3622	rBV4	861	602	0.02%	0.003%
88	13.079	3646	3651	3658	rBV4	885	1171	0.05%	0.005%
89	13.134	3663	3668	3671	rBV5	843	891	0.03%	0.004%
90	13.172	3675	3680	3684	rBV4	935	1000	0.04%	0.004%
91	13.208	3689	3691	3694	rVV2	597	415	0.02%	0.002%
92	13.237	3697	3700	3705	rVB5	2280	2113	0.08%	0.009%
93	13.298	3714	3719	3733	rVB6	2434	4738	0.18%	0.021%
94	13.394	3746	3749	3753	rBV3	858	663	0.03%	0.003%
95	13.413	3753	3755	3761	rVV5	776	660	0.03%	0.003%
96	13.835	3884	3886	3888	rBV2	885	459	0.02%	0.002%
97	13.860	3889	3894	3905	rVB8	2928	4613	0.18%	0.020%
98	14.111	3968	3972	3977	rVV3	2783	2483	0.10%	0.011%
99	14.349	4042	4046	4047	rBV3	1583	1016	0.04%	0.004%
100	14.941	4228	4230	4234	rBV3	885	594	0.02%	0.003%

Sum of corrected areas: 23052554

Data Path : Z:\VOASRV\HPCHEM1\MSVOA U\DATA\VU042820\
 Data File : VU037890.D
 Acq On : 28 Apr 2020 20:29
 Operator : JC/MD
 Sample : L2395-03 500X
 Misc : 5.0mL/MSVOA U/WATER
 ALS Vial : 16 Sample Multiplier: 1

Quant Method : Z:\VOASRV\HPCHEM1\MSVOA_U\METHOD\SOMULM042320WMA.M
 Quant Title : VOC Analysis

TIC Library : C:\DATABASE\NIST11.L
 TIC Integration Parameters: LSCINT.P



Data Path : Z:\VOASRV\HPCHEM1\MSVOA_U\DATA\VU042820\
Data File : VU037890.D
Acq On : 28 Apr 2020 20:29
Operator : JC/MD
Sample : L2395-03 500X
Misc : 5.0mL/MSVOA_U/WATER
ALS Vial : 16 Sample Multiplier: 1

Quant Method : Z:\VOASRV\HPCHEM1\MSVOA_U\METHOD\SOMULM042320WMA.M
Quant Title : VOC Analysis

TIC Library : C:\DATABASE\NIST11.L
TIC Integration Parameters: LSCINT.P

No Library Search Compounds Detected

Data Path : Z:\VOASRV\HPCHEM1\MSVOA_U\DATA\VU042820\
Data File : VU037890.D
Acq On : 28 Apr 2020 20:29
Operator : JC/MD
Sample : L2395-03 500X
Misc : 5.0mL/MSVOA_U/WATER
ALS Vial : 16 Sample Multiplier: 1

Quant Method : Z:\VOASRV\HPCHEM1\MSVOA_U\METHOD\SOMULM042320WMA.M
Quant Title : VOC Analysis

TIC Library : C:\DATABASE\NIST11.L
TIC Integration Parameters: LSCINT.P

TIC Top Hit name	RT	EstConc	Units	Response	--Internal Standard--			
					#	RT	Resp	Conc
