

Data Path : Z:\voasrv\HPCHEM1\MSVOA\_U\Data\VU042821\  
 Data File : VU043363.D  
 Acq On : 27 Apr 2021 23:18  
 Operator : SY/MD  
 Sample : M2133-07  
 Misc : 5.0mL/MSVOA\_U/WATER  
 ALS Vial : 10 Sample Multiplier: 1

Instrument :  
 MSVOA\_U  
 ClientSampleId :  
 SA-PZ125-20210420

Quant Time: Apr 28 09:13:05 2021  
 Quant Method : Z:\voasrv\HPCHEM1\MSVOA\_U\Method\82U041221W.M  
 Quant Title : SW846 8260  
 QLast Update : Mon Apr 12 13:17:29 2021  
 Response via : Initial Calibration

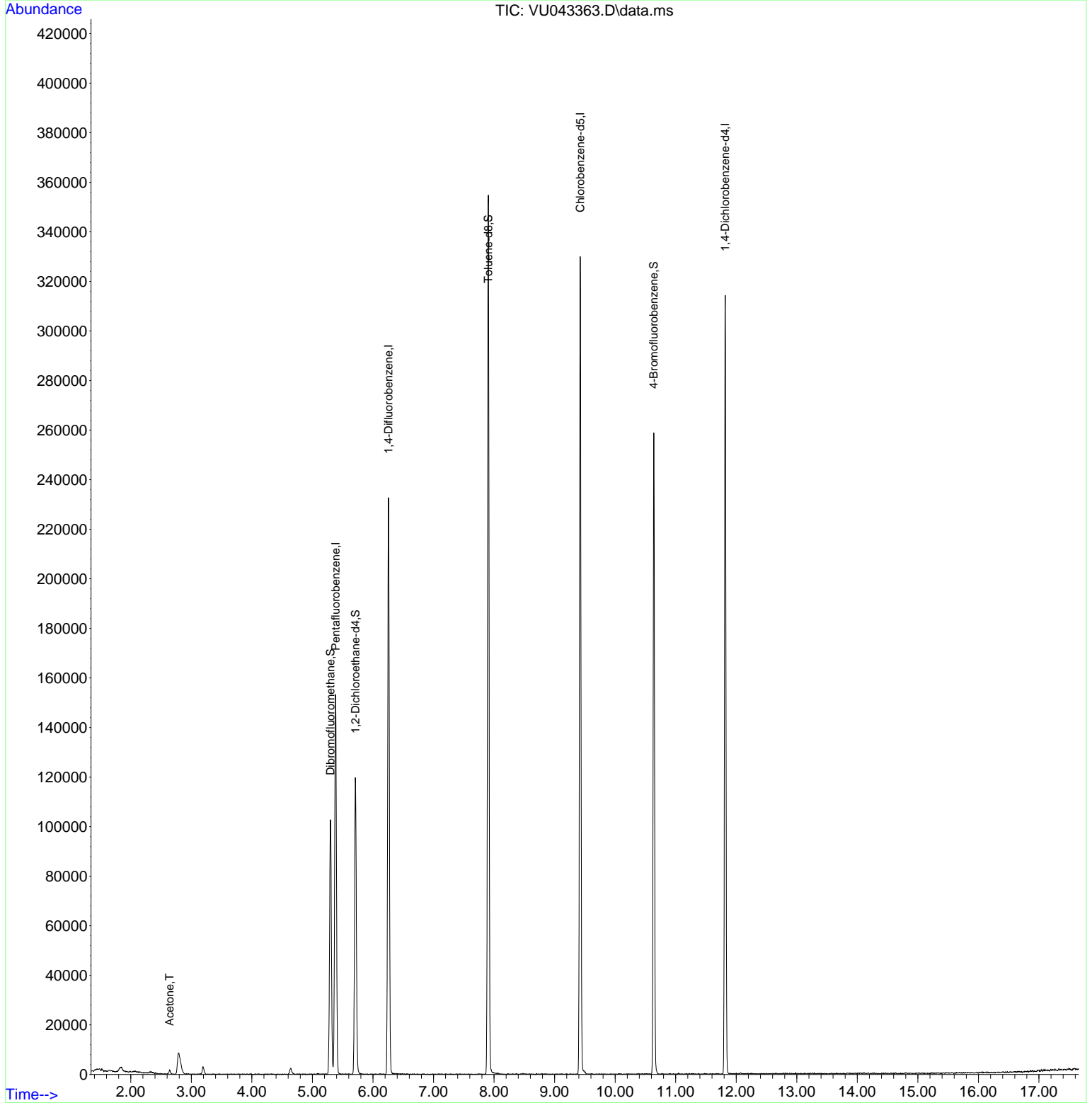
Compound	R.T.	QIon	Response	Conc	Units	Dev(Min)
-----						
Internal Standards						
1) Pentafluorobenzene	5.382	168	102839	50.00	ug/l	0.00
34) 1,4-Difluorobenzene	6.256	114	171273	50.00	ug/l	0.00
63) Chlorobenzene-d5	9.423	117	163759	50.00	ug/l	0.00
72) 1,4-Dichlorobenzene-d4	11.819	152	76587	50.00	ug/l	0.00
System Monitoring Compounds						
33) 1,2-Dichloroethane-d4	5.710	65	92496	53.50	ug/l	0.00
Spiked Amount	50.000		Recovery	=	107.00%	
35) Dibromofluoromethane	5.298	113	63329	49.21	ug/l	0.00
Spiked Amount	50.000		Recovery	=	98.42%	
50) Toluene-d8	7.906	98	216404	47.52	ug/l	0.00
Spiked Amount	50.000		Recovery	=	95.04%	
62) 4-Bromofluorobenzene	10.639	95	75832	41.58	ug/l	0.00
Spiked Amount	50.000		Recovery	=	83.16%	
Target Compounds						
16) Acetone	2.642	43	1948	1.61	ug/l	Qvalue 98
-----						

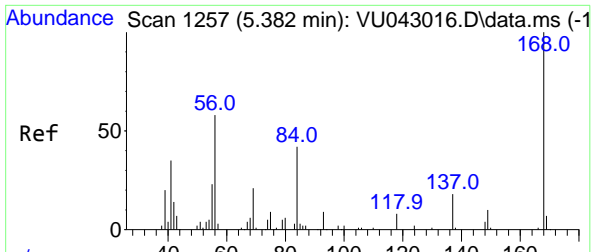
(#) = qualifier out of range (m) = manual integration (+) = signals summed

Data Path : Z:\voasrv\HPCHEM1\MSVOA\_U\Data\VU042821\  
 Data File : VU043363.D  
 Acq On : 27 Apr 2021 23:18  
 Operator : SY/MD  
 Sample : M2133-07  
 Misc : 5.0mL/MSVOA\_U/WATER  
 ALS Vial : 10 Sample Multiplier: 1

Instrument :  
 MSVOA\_U  
 ClientSampleId :  
 SA-PZ125-20210420

Quant Time: Apr 28 09:13:05 2021  
 Quant Method : Z:\voasrv\HPCHEM1\MSVOA\_U\Method\82U041221W.M  
 Quant Title : SW846 8260  
 QLast Update : Mon Apr 12 13:17:29 2021  
 Response via : Initial Calibration

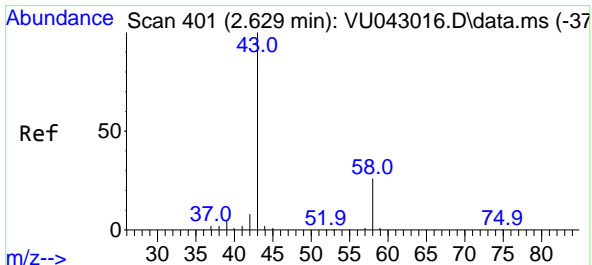
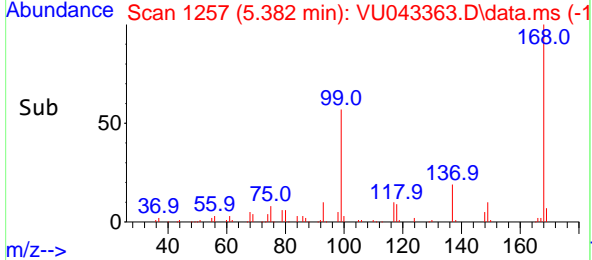
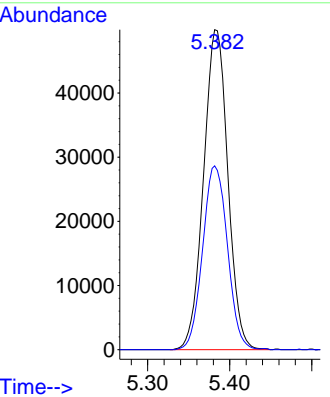
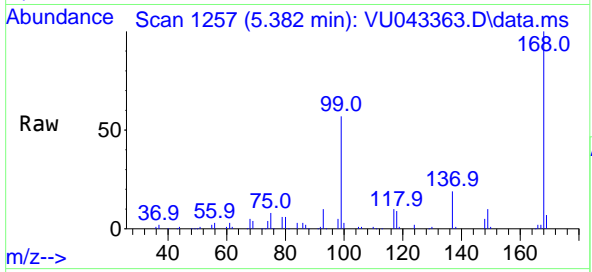




#1  
 Pentafluorobenzene  
 Concen: 50.00 ug/l  
 RT: 5.382 min Scan# 1257  
 Delta R.T. -0.000 min  
 Lab File: VU043363.D  
 Acq: 27 Apr 2021 23:18

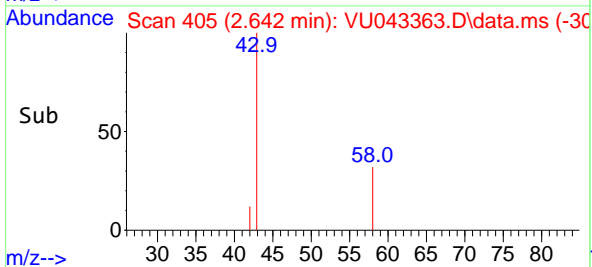
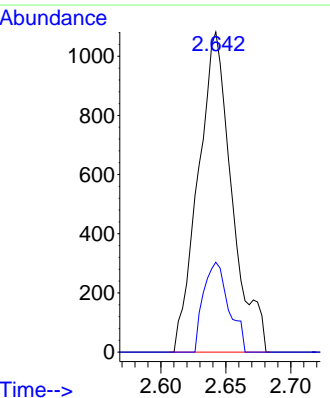
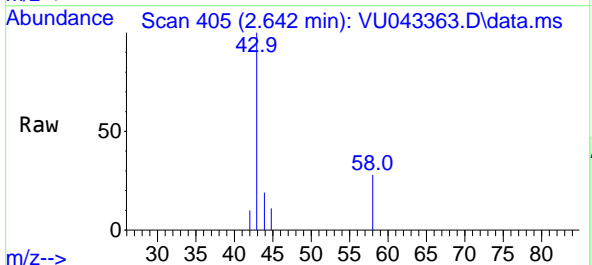
Instrument :  
 MSVOA\_U  
 ClientSampleId :  
 SA-PZ125-20210420

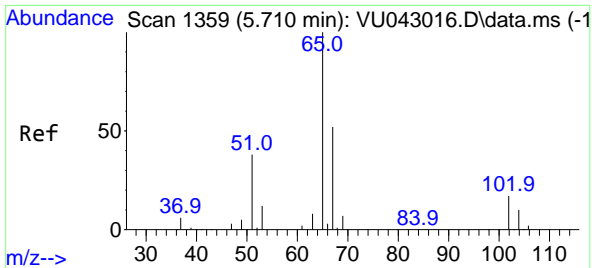
Tgt Ion:168 Resp: 102839  
 Ion Ratio Lower Upper  
 168 100  
 99 57.5 45.0 67.4



#16  
 Acetone  
 Concen: 1.61 ug/l  
 RT: 2.642 min Scan# 405  
 Delta R.T. 0.013 min  
 Lab File: VU043363.D  
 Acq: 27 Apr 2021 23:18

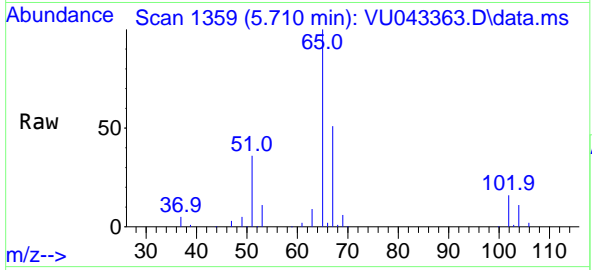
Tgt Ion: 43 Resp: 1948  
 Ion Ratio Lower Upper  
 43 100  
 58 28.1 21.5 32.3



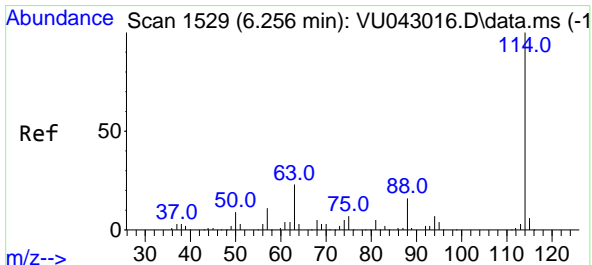
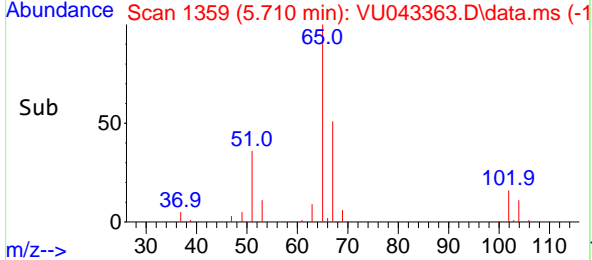
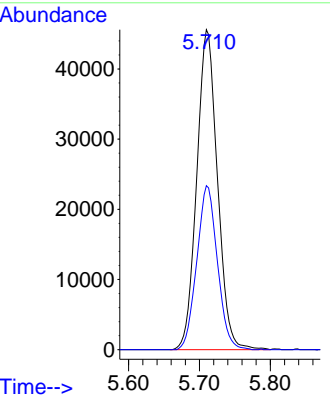


#33  
 1,2-Dichloroethane-d4  
 Concen: 53.50 ug/l  
 RT: 5.710 min Scan# 1359  
 Delta R.T. -0.000 min  
 Lab File: VU043363.D  
 Acq: 27 Apr 2021 23:18

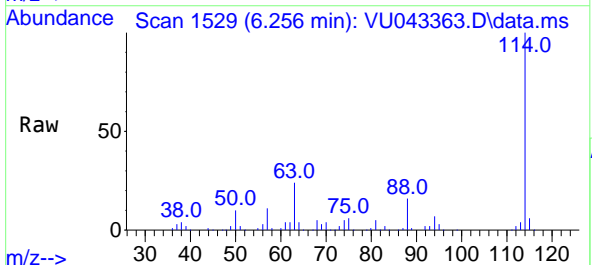
Instrument : MSVOA\_U  
 ClientSampled : SA-PZ125-20210420



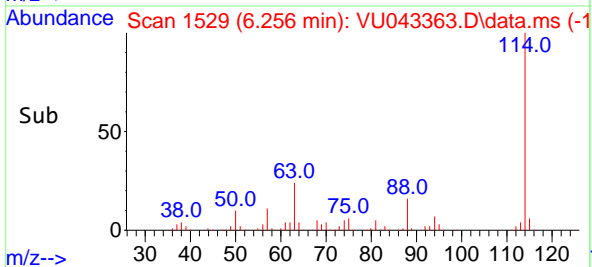
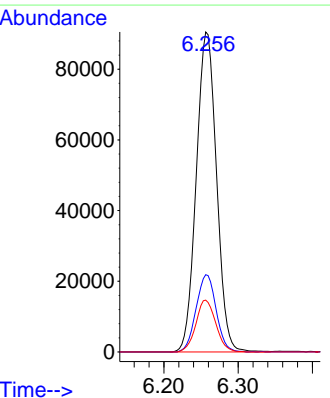
Tgt Ion: 65 Resp: 92496  
 Ion Ratio Lower Upper  
 65 100  
 67 50.9 0.0 99.8

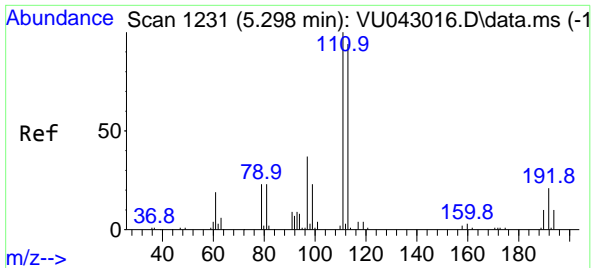


#34  
 1,4-Difluorobenzene  
 Concen: 50.00 ug/l  
 RT: 6.256 min Scan# 1529  
 Delta R.T. 0.000 min  
 Lab File: VU043363.D  
 Acq: 27 Apr 2021 23:18



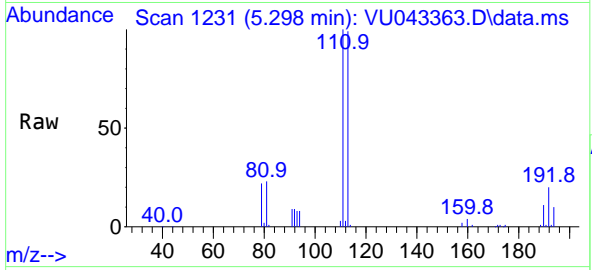
Tgt Ion: 114 Resp: 171273  
 Ion Ratio Lower Upper  
 114 100  
 63 24.1 0.0 44.2  
 88 16.2 0.0 33.4





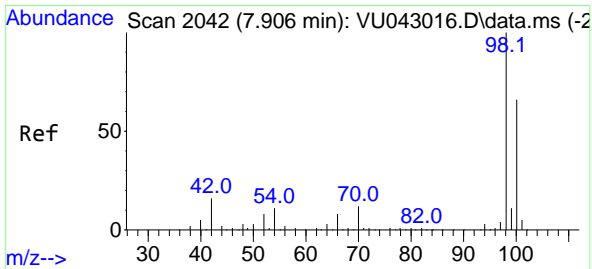
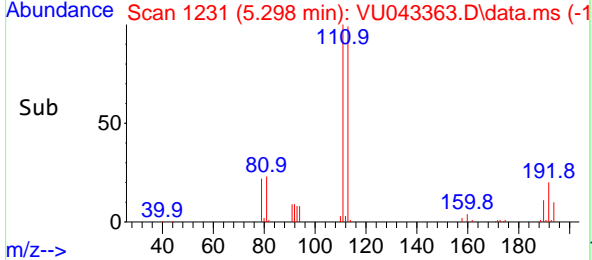
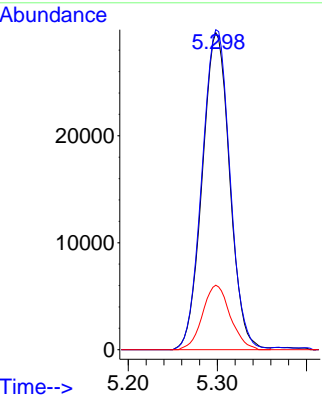
#35  
 Dibromofluoromethane  
 Concen: 49.21 ug/l  
 RT: 5.298 min Scan# 1231  
 Delta R.T. 0.000 min  
 Lab File: VU043363.D  
 Acq: 27 Apr 2021 23:18

Instrument : MSVOA\_U  
 ClientSampled : SA-PZ125-20210420



Tgt Ion:113 Resp: 63329

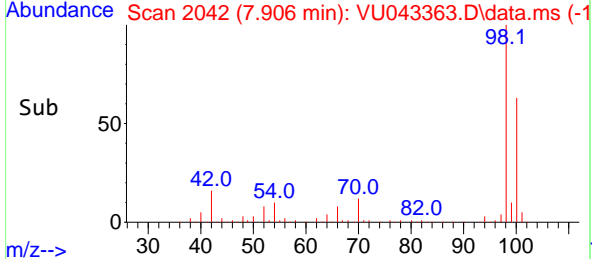
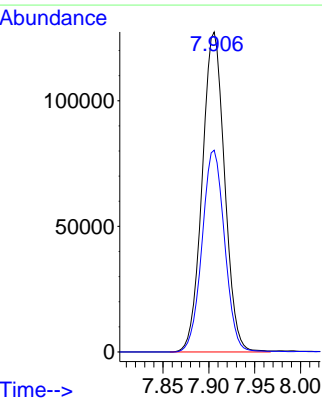
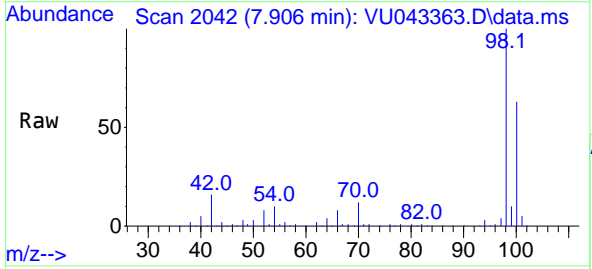
Ion	Ratio	Lower	Upper
113	100		
111	102.6	81.8	122.8
192	20.5	17.2	25.8

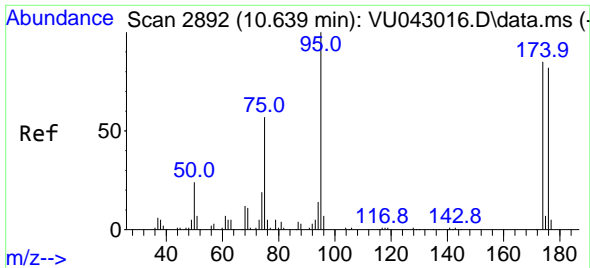


#50  
 Toluene-d8  
 Concen: 47.52 ug/l  
 RT: 7.906 min Scan# 2042  
 Delta R.T. -0.000 min  
 Lab File: VU043363.D  
 Acq: 27 Apr 2021 23:18

Tgt Ion: 98 Resp: 216404

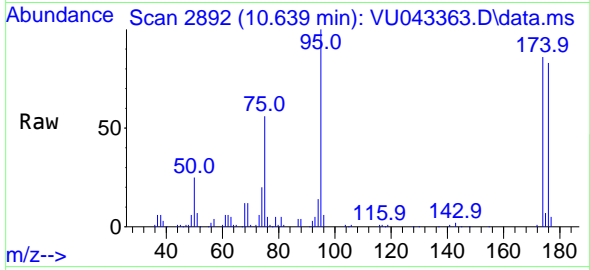
Ion	Ratio	Lower	Upper
98	100		
100	63.6	50.2	75.2



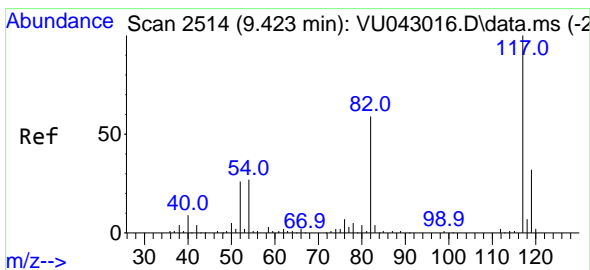
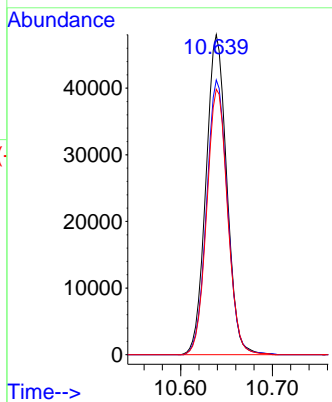
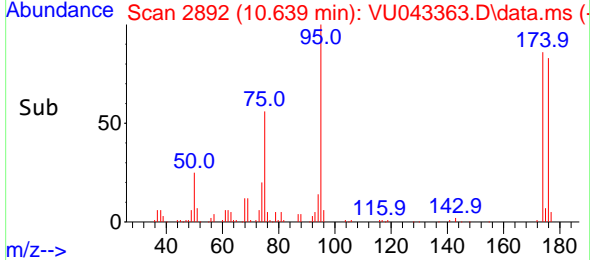


#62  
 4-Bromofluorobenzene  
 Concen: 41.58 ug/l  
 RT: 10.639 min Scan# 2892  
 Delta R.T. -0.000 min  
 Lab File: VU043363.D  
 Acq: 27 Apr 2021 23:18

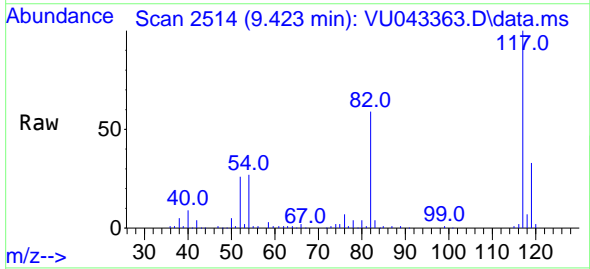
Instrument :  
 MSVOA\_U  
 ClientSampled :  
 SA-PZ125-20210420



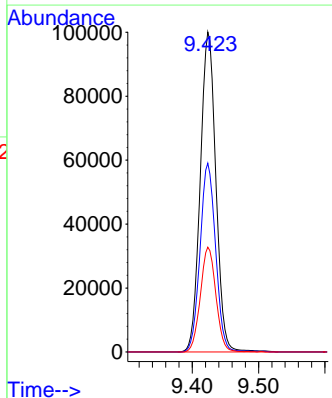
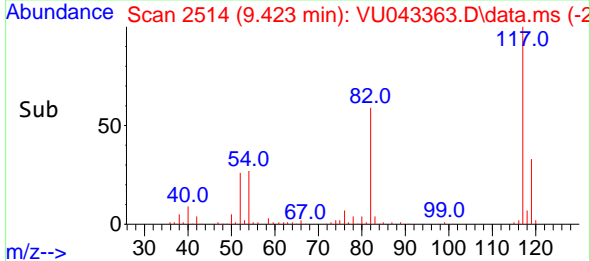
Tgt Ion: 95 Resp: 75832  
 Ion Ratio Lower Upper  
 95 100  
 174 86.3 0.0 172.2  
 176 83.3 0.0 168.8

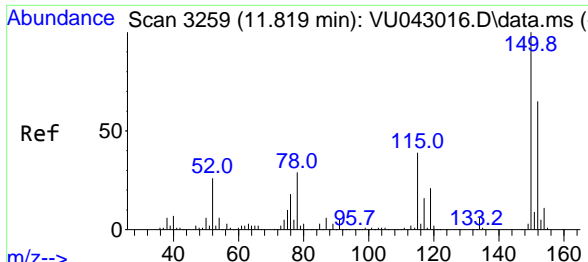


#63  
 Chlorobenzene-d5  
 Concen: 50.00 ug/l  
 RT: 9.423 min Scan# 2514  
 Delta R.T. 0.000 min  
 Lab File: VU043363.D  
 Acq: 27 Apr 2021 23:18



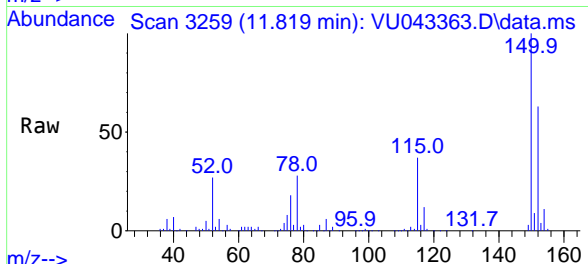
Tgt Ion: 117 Resp: 163759  
 Ion Ratio Lower Upper  
 117 100  
 82 59.0 45.8 68.6  
 119 32.7 25.8 38.8





#72  
 1,4-Dichlorobenzene-d4  
 Concen: 50.00 ug/l  
 RT: 11.819 min Scan# 3259  
 Delta R.T. -0.000 min  
 Lab File: VU043363.D  
 Acq: 27 Apr 2021 23:18

**Instrument :**  
 MSVOA\_U  
**ClientSampled :**  
 SA-PZ125-20210420



Tgt Ion:152 Resp: 76587

Ion	Ratio	Lower	Upper
152	100		
115	58.9	41.5	124.6
150	160.0	0.0	342.4

